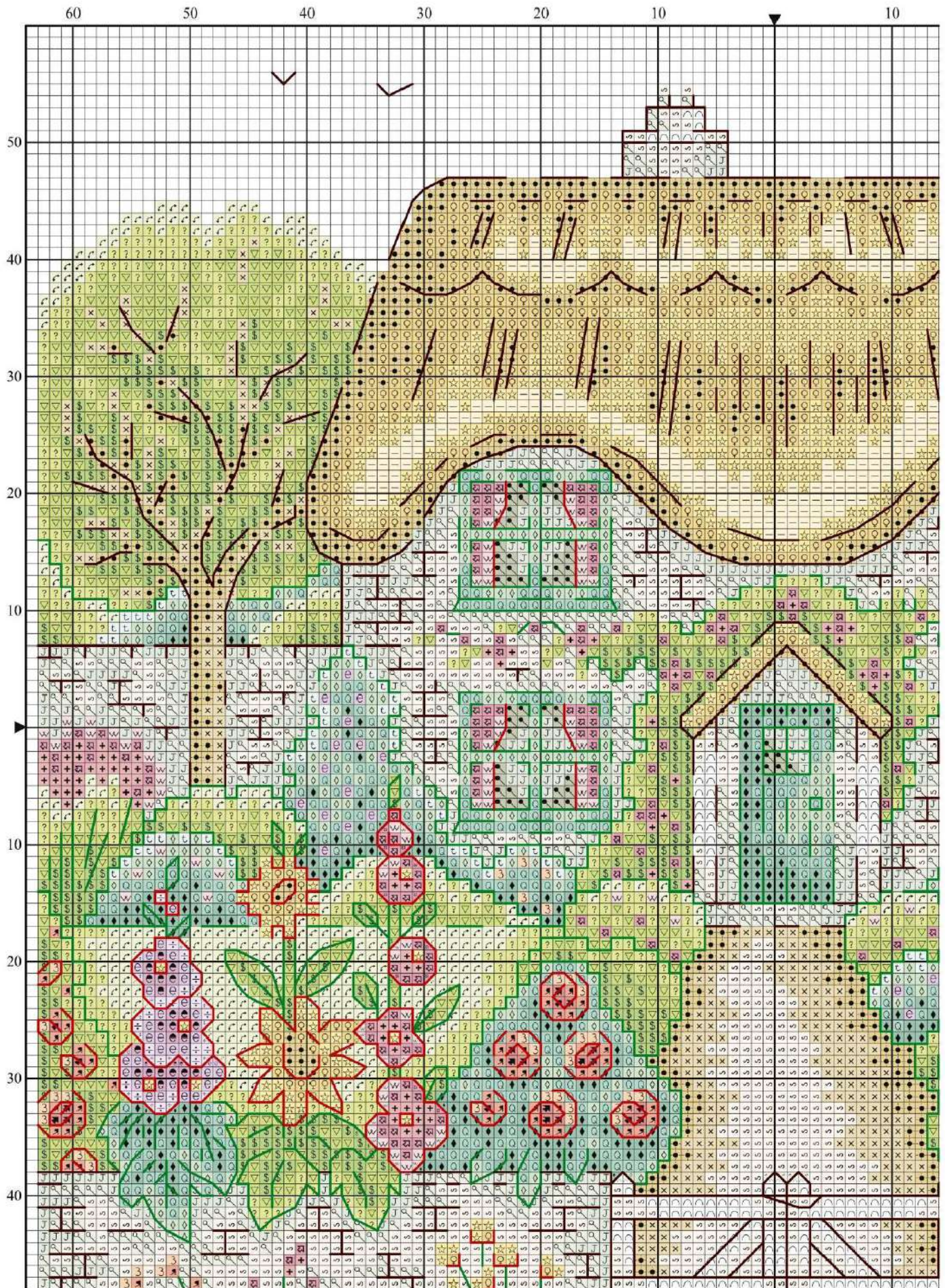


STITCH
FOR THE
SEASON



We can't think of a better view than this pretty cottage and its gorgeous garden for a summer stitch



Thatched Home chart (top left)



Project pack

If you would like to stitch 'Thatched Home', Lakeside Needlecraft is providing a materials pack with the fabric, threads and any other accessories you need. Visit website www.lakesideneedlecraft.co.uk to order your project pack and get stitching right away!

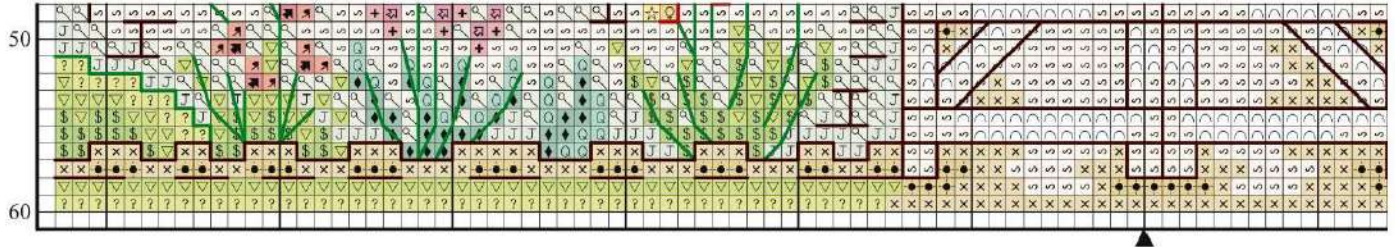
Shopping list

- ✕ Zweigart* 14-count light blue (503) aida measuring 38x38cm (15x15in)
- ✕ Stranded cotton as listed in the key
- ✕ Size 24 tapestry needle
- ✕ Frame and mount of your choice with a minimum aperture of 22x23cm (8½x9in)

Thread & fabric cost
Approximately £49

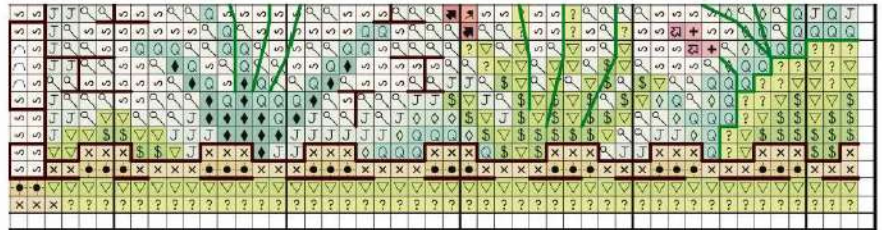
*For stockists see page 90

Thatched Home chart (top right)



Thatched Home chart (bottom left)

TOP TIP
 • Stitching on 14-count light blue aida to recreate the summery sky will give you more time to savour working the colourful shades for the garden flowers



Thatched Home chart (bottom right)



Thatched Home key

✦ Cross stitch in two strands

	DMC	Anchor	Madeira	
∩	blanc	2	2402	white
∞	ecru	926	2404	cream
⦿	33	92	805	magenta
w	151	73	404	light pink
e	209	98	803	lilac
÷	211	342	801	light lilac
⦿	351	10	214	coral
x	422	943	2102	tan
⦿	644	830	1814	light grey
⦿	645	273	1811	smoke grey
J	647	1040	1813	grey
●	680	901	2210	gold
§	702	226	1306	green
▽	704	255	1308	light green
t	747	158	1104	blue
↻	772	259	1604	grass green
⦿	817	13	210	red
⦿	958	187	1114	emerald
◇	964	185	1112	light emerald
◆	991	1076	1204	ocean green
3	3341	328	403	peach
⦿	3733	75	605	pink
?	3819	279	1610	lime green
♀	3820	306	2509	dark yellow
☆	3822	295	2511	yellow
—	3823	386	2512	light yellow
+	3832	38	604	raspberry pink

✦ Backstitch in one strand

—	500	683	1705	bottle green
—	815	44	513	ruby
—	3371	382	2004	brown

STITCH COUNT 119 high x 126 wide

DESIGN AREA 14 HPI (28-count evenweave)
 – 21.5x23cm (8½x9in)

STITCHED BY Laura Boyter

This design was stitched using DMC stranded cotton



Liz READER PANEL

“This summer cottage is such a pretty design, the garden is lovely. I’d like to stitch this for my best friend who is thinking of moving house. I’d put it in a frame so she could hang it in her new home.”