



ALMA Observations of the Water Fountain Pre-planetary Nebula IRAS 16342-3814: High-velocity Bipolar Jets and an Expanding Torus

R. Sahai¹, W. H. T. Vlemmings², T. Gledhill³, C. Sánchez Contreras⁴, E. Lagadec⁵,
L-Å Nyman^{6,7}, and G. Quintana-Lacaci⁸

¹Jet Propulsion Laboratory, MS 183-900, California Institute of Technology, Pasadena, CA 91109, USA; raghvendra.sahai@jpl.nasa.gov

²Department of Earth and Space Sciences, Chalmers University of Technology, Onsala Space Observatory, SE-43992 Onsala, Sweden

³Centre for Astrophysics Research, University of Hertfordshire, College Lane, Hatfield AL10 9AB, UK

⁴Astrobiology Center (CSIC-INTA), ESAC Campus, E-28691 Villanueva de la Canada, Madrid, Spain

⁵Université Côte d'Azur, Observatoire de la Côte d'Azur, CNRS, Lagrange, France

⁶Joint ALMA Observatory (JAO), Alonso de Cordova 3107, Vitacura, Santiago de Chile, Chile

⁷European Southern Observatory, Alonso de Cordova 3107, Vitacura, Santiago, Chile

⁸Instituto de Ciencia de Materiales de Madrid, Sor Juana Ines de la Cruz, 3, Cantoblanco, E-28049, Madrid, Spain

Received 2016 November 4; revised 2016 December 15; accepted 2016 December 15; published 2017 January 20

Abstract

We have mapped $^{12}\text{CO } J = 3-2$ and other molecular lines from the “water fountain” bipolar pre-planetary nebula (PPN) IRAS 16342-3814 with $\sim 0''.35$ resolution using Atacama Large Millimeter/submillimeter Array. We find (i) two very high-speed knotty, jet-like molecular outflows; (ii) a central high-density ($> \text{few} \times 10^6 \text{ cm}^{-3}$), expanding torus of diameter 1300 au; and (iii) the circumstellar envelope of the progenitor AGB, generated by a sudden, very large increase in the mass-loss rate to $> 3.5 \times 10^{-4} M_{\odot} \text{ yr}^{-1}$ in the past ~ 455 years. Strong continuum emission at 0.89 mm from a central source (690 mJy), if due to thermally emitting dust, implies a substantial mass ($0.017 M_{\odot}$) of very large (\sim millimeter-sized) grains. The measured expansion ages of the above structural components imply that the torus (age ~ 160 years) and the younger high-velocity outflow (age ~ 110 years) were formed soon after the sharp increase in the AGB mass-loss rate. Assuming a binary model for the jets in IRAS 16342, the high momentum rate for the dominant jet-outflow in IRAS 16342 implies a high minimum accretion rate, ruling out standard Bondi–Hoyle–Lyttleton wind accretion and wind Roche-lobe overflow (RLOF) models with white-dwarf or main-sequence companions. Most likely, enhanced RLOF from the primary or accretion modes operating within common-envelope evolution are needed.

Key words: circumstellar matter – stars: AGB and post-AGB – stars: mass-loss – stars: winds, outflows – techniques: interferometric

1. Introduction

High-resolution imaging surveys of planetary nebulae (PNe) and pre-planetary nebulae (PPNe) reveal a dazzling variety of bipolar and multipolar morphologies in these objects (e.g., Sahai et al. 2007, 2011; Siódmiak et al. 2008). In contrast, their progenitor AGB stars are typically embedded in roughly spherical gas-dust circumstellar envelopes (CSEs) resulting from dense, slow (typically $\sim 10-25 \text{ km s}^{-1}$) stellar winds ejected with rates up to $10^{-4} M_{\odot} \text{ yr}^{-1}$ (e.g., Neri et al. 1998; Castro-Carrizo et al. 2010). Among various mechanisms that have been considered (Balick & Frank 2002), hydrodynamic sculpting of a prior, spherically symmetric outflow by wandering and/or episodic jets from the inside out (Sahai & Trauger 1998) is widely believed to be the primary mechanism that can produce the extreme aspherical shapes in PNe and PPNe. Support for this mechanism comes from an increasing number of detailed observational studies of specific PPNe (Cox et al. 2000; Sahai et al. 2006, 2013; Olofsson et al. 2015) and numerical simulations of jet-CSE interactions (e.g., Lee & Sahai 2003; Balick et al. 2013).

The key to understanding the jet-sculpting (or alternative) shaping mechanisms lies in the study of the structure and kinematics of the youngest objects: the “water-fountains”—a class of young PPNe in which unusually fast radial H_2O outflows with $V_{\text{exp}} \gtrsim 55 \text{ km s}^{-1}$ (Likkell & Morris 1988; Likkell et al. 1992) show that the jet activity is extremely recent ($\lesssim 100$ years; Imai 2007).

IRAS 16342-3814 (hereafter IRAS 16342) is the best-studied and nearest ($\sim 2 \text{ kpc}$) water fountain PPN. Its morphology is well resolved with optical (*HST*) and near-infrared (Keck Adaptive Optics) imaging. Radio interferometry (VLA, VLBA) shows water masers spread over a range of radial velocities encompassing 270 km s^{-1} (Sahai et al. 1999, Setal99; Claussen et al. 2009). Single-dish millimeter-wave $\text{CO } J = 2-1$ and $3-2$ observations (He et al. 2008; Imai et al. 2012) reveal a massive, high-velocity molecular outflow. The radio and optical data on IRAS 16342 suggest nebular shaping in action, with a fast collimated outflow creating a pair of bubble-like cavities by plowing into a surrounding dense, more slowly expanding AGB CSE. The near-IR AO imaging reveals a remarkable corkscrew structure inscribed on the lobe walls—inferred to be a signature of a precessing jet (Sahai et al. 2005; Setal05). Shock-excited H_2 emission is found in the lobes, presumably excited by the jet (Gledhill & Forde 2012). The central star remains obscured behind a dark equatorial waist even in the mid-IR ($12 \mu\text{m}$; Verhoelst et al. 2009).

Here, we report millimeter-wave molecular-line and continuum interferometric observations of IRAS 16342, using the Atacama Large Millimeter/submillimeter Array (ALMA). These data clearly reveal, for the first time, the dynamics of a pair of young, high-speed, bipolar collimated outflows, the presence of a high-density central torus, and a surrounding CSE resulting from an enormous increase in the mass-loss rate in the past few hundred years.

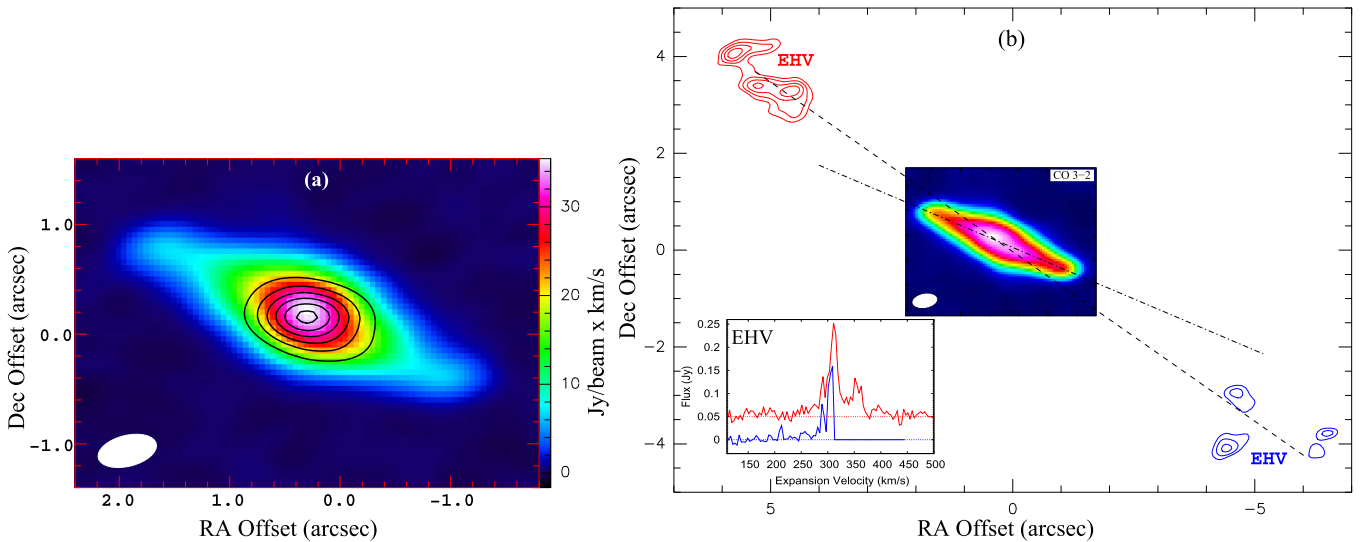


Figure 1. ALMA maps of the ^{13}CO , $^{12}\text{CO } J = 3-2$, and 0.89 mm continuum emission from IRAS 16342 (white ellipses show the beam FWHM and orient). (a) ^{13}CO emission integrated over the HVO velocity range of $\pm 260 \text{ km s}^{-1}$ centered at the systemic velocity. The continuum intensity is shown as contours, with the lowest level (step) equal to 20% (15%) of the peak, $0.25 \text{ Jy beam}^{-1}$. The continuum peak is located at (J2000) R.A. = 16:37:39.935, decl. = $-38:20:17.15$, and the phase center (i.e., offset 0, 0) at R.A. = 16:37:39.91, decl. = $-38:20:17.3$. (b) Colorscale shows ^{12}CO emission integrated over the HVO velocity range. Contours show red- and blueshifted components of the EHVO covering emission at $\pm 310 \text{ km s}^{-1}$ relative to the systemic velocity (the red emission is integrated over 34 km s^{-1} , whereas the blue emission lies at the edge of the bandpass and is integrated over 24 km s^{-1}). Inset shows the ^{12}CO spectra of the red- and blueshifted components of the EHVO, and the dashed (dash-dotted) line shows the axis of the EHVO (HVO).

2. Observations

The data were obtained on 2015 June 13 with 37 antennas of the ALMA 12 m array in band 7. Using 35 min on the science target, the data cover four spectral windows (SPWs). Two 1.875 GHz-bandwidth SPWs were centered on 345.170 GHz (SPW0) and 331.214 GHz (SPW2) with 3840 channels each. Two additional continuum SPWs with 2 GHz bandwidth with 128 channels were centered on 343.337 GHz (SPW1) and 333.104 GHz (SPW4). The baselines range from 21 to 783 m implying a maximum recoverable scale of $\sim 4''$. The data were calibrated using the ALMA pipeline using Ceres as flux calibrator and the quasars J1924-2914 ($\sim 2.7 \text{ Jy}$) and J1636-4102 ($\sim 0.14 \text{ Jy}$) as bandpass and gain calibrator, respectively. Following the standard calibration, self-calibration was performed on the continuum emission of IRAS 16342. Images were created using a Briggs weighting scheme channel averaging to 4 km s^{-1} in continuum subtracted line SPWs. In the continuum SPWs, the effective channel width corresponds to $\sim 14 \text{ km s}^{-1}$. Typical channel rms is $\sim 2.3 \text{ mJy beam}^{-1}$ in line-free 4 km s^{-1} channels.

3. Results

We have identified a number of lines in the 4 SPWs. In addition to the $J = 3-2$ lines of ^{12}CO (SPW0) and ^{13}CO (SPW2), and $\text{H}^{13}\text{CN } J = 4-3$ (SPW0) that are discussed here, we also find $\text{SO N}, J = 8, 8-7, 7$, (SPW0, SPW1), $\text{CS } J = 7-6$ (SPW1), $^{29}\text{SiO } J = 8-7$ ($v = 0$) (SPW1), $\text{SO}_2 4(3, 1)-3(2, 2)$ (SPW3), and $^{34}\text{SO N}, J = 8, 7-7, 6$ (SPW3) (discussed in R. Sahai et al. 2017, in preparation).

3.1. High-velocity Outflows

The IRAS 16342 ^{12}CO and ^{13}CO moment-zero maps, generated by integrating over a velocity range $\pm 260 \text{ km s}^{-1}$ relative to the systemic velocity ($V_{\text{lsr}} \sim 45 \text{ km s}^{-1}$), show point-symmetric shapes (Figure 1(a)). The SW (NE) lobe is

blueshifted (redshifted), and the nebula's long axis is oriented at $\text{PA} = 67^\circ$. The ^{12}CO image shows emission from an extreme high-velocity outflow (EHVO) located much further from the nebular tips at a (projected) radial velocity of $\sim \pm 310 \text{ km s}^{-1}$ (Figure 1(b)), and the axis of this outflow is oriented at $\text{PA} \sim 55^\circ$. Since this emission has a high degree of symmetry relative to the center, in both position and velocity, and because it lies along an axis close to the nebular axis, we conclude that it is related to IRAS 16342, and not to random interstellar clouds in the Galactic plane. A comparison of the expansion velocity ranges of the blue- and redshifted EHVO components (Figure 1(b), inset) indicates that part of the former lies beyond the bandpass edge.

Position-velocity (PV) plots of $^{12}\text{CO } J = 3-2$ and $\text{H}^{13}\text{CN } J = 4-3$ emission along the nebular axis generally show an S-shape, with small knots (Figure 2(a)). We have identified a total of five pairs of such knots ($B1 - B5$ and $R1 - R5$). The emission from the central bipolar nebula extends over $-230 < V_{\text{lsr}} (\text{km s}^{-1}) < 325$ in ^{12}CO (Figure 2(b)); the emission from $^{13}\text{CO } J = 3-2$ and $\text{H}^{13}\text{CN } J = 4-3$ is weaker and is detectable over a somewhat smaller range ($\sim 500 \text{ km s}^{-1}$).

The spiral structure seen in the PV plots most likely indicates emission from a precessing high-velocity bipolar outflow (HVO) that entrains material in the near and far bipolar lobe walls. Blobs $B1$ and $R1$ have the highest outflow velocities and the smallest spatial offset from the center and are thus moving along an axis close to the line-of-sight (los), implying an outflow speed of slightly more than 250 km s^{-1} . If we assume that all blobs are moving radially with this same outflow speed, i.e., 250 km s^{-1} , then we can derive the locations of blob pairs $B2 - R2, B3 - R3, B4 - R4$, and $B5 - R5$, along the los and their ages ($\sim 95, 80, 60, 20$ years, respectively; Figure 3). The $B1 - R1$ pair's much lower brightness, compared to that of the other pairs, suggests that $B1 - R1$ is the oldest pair, since we expect the blobs to cool and dissipate with time. Assuming that the interval between the ejections of $B1 - R1$ and $B2 - R2$ is similar to that between $B2 - R2$ and $B3 - R3$, the $B1 - R1$

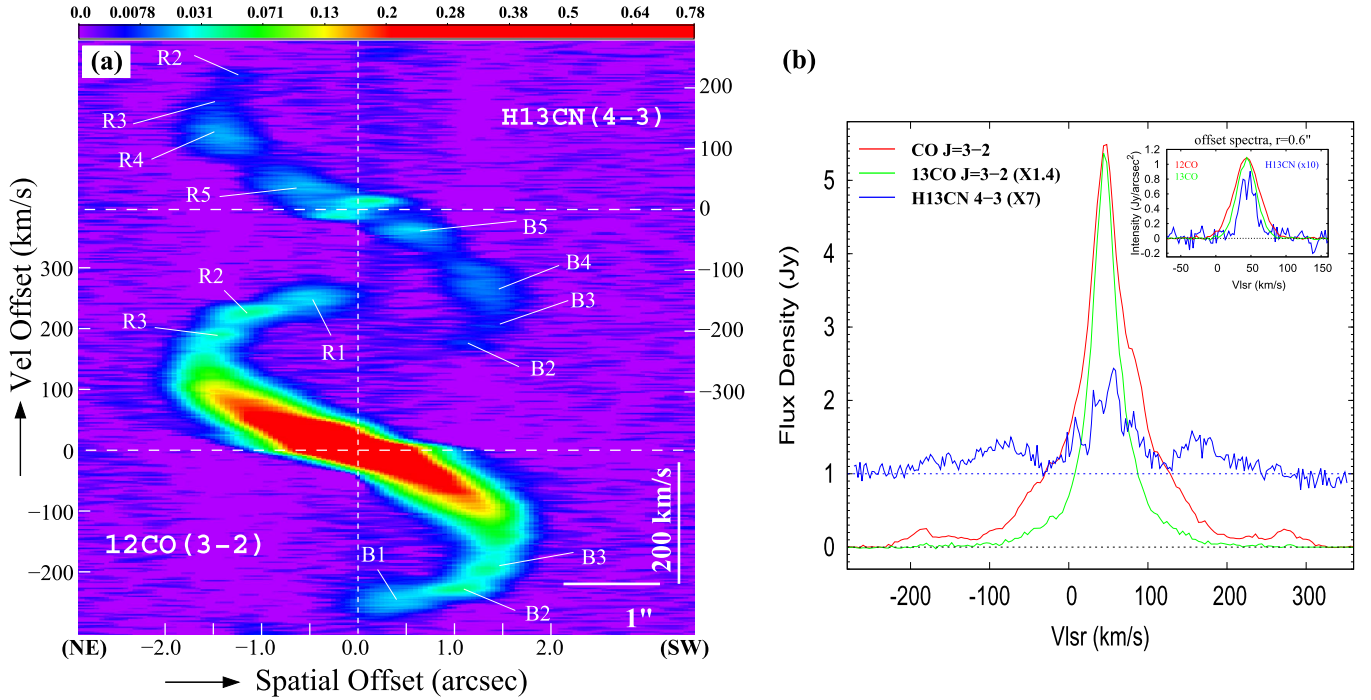


Figure 2. (a) Position–velocity plot of the $^{12}\text{CO } J = 3-2$ and $\text{H}^{13}\text{CN } J = 4-3$ emission from IRAS 16342 along PA = 67° . X-axis shows spatial offset from the nebular center (marked by dashed vertical line). Y-axis shows velocity offset from the systemic velocity ($V_{\text{lsr}} = 45 \text{ km s}^{-1}$, marked by dashed horizontal lines). The colorscale is in units of Jy beam^{-1} ; the beam-size (FWHM) is $0''.49 \times 0''.27$. (b) Spectra of the spatially integrated (total) flux density for $^{12}\text{CO } J = 3-2$, $^{13}\text{CO } J = 3-2$ (scaled by factor 1.4), and $\text{H}^{13}\text{CN } J = 4-3$ (scaled by a factor of 7 and shifted upward by 1 Jy). The contribution of emission from the red wing of $^{12}\text{CO } J = 3-2$ to that of the blue wing of $\text{H}^{13}\text{CN } J = 4-3$ (and vice versa) has been subtracted. Inset shows the mean ^{12}CO and $^{13}\text{CO } J = 3-2$ spectra extracted from $0''.15$ diameter apertures located at $r = \pm 0''.6$ and the mean $\text{H}^{13}\text{CN } J = 4-3$ spectrum extracted from annular wedges with radius (width) $\pm 0''.6$ ($0''.12$) and opening angle of 52° , along PA = 133° .

pair are about 110 years old. The corresponding inclination angle⁹ for the B1 – R1 axis is then 8° , and the resulting locations of B1 and R1 are consistent with an extrapolation of the S-shape defined by the other blobs. We conclude that the HVO expansion age is ~ 110 years. Note that since the kinematics of the CO emitting blobs may depend on the hydrodynamic interaction between the underlying jet and surrounding CSE material, the assumption of a uniform radial outflow velocity is likely not strictly true, and the derived ages are somewhat uncertain.

Excluding the velocity range $0 < V_{\text{lsr}} (\text{km s}^{-1}) < 90$ that includes emission from the AGB CSE (see Section 3.4), we find that the velocity-integrated fluxes in the HVO’s red wing ($90 < V_{\text{lsr}} (\text{km s}^{-1}) < 320$) and blue wing ($-228 < V_{\text{lsr}} (\text{km s}^{-1}) < 0$) are 103.9 and $89.8 \text{ Jy km s}^{-1}$, respectively.

The ^{13}CO to ^{12}CO line intensity ratio is almost unity toward the center, implying a very low relative abundance ratio, $f_{12/13} = f(^{12}\text{CO})/f(^{13}\text{CO})$. Hence, here and in the following sections, we assume that $f_{12/13} \sim 3$, the lowest value achievable via equilibrium CNO nucleosynthesis, and take $f(^{12}\text{CO}) = 3 \times 10^{-4}$, or $f(^{13}\text{CO}) = 10^{-4}$. Larger values of $f_{12/13}$ will imply proportionately larger values of mass and mass-dependent quantities.

The scalar momentum and kinetic energy in the HVO, derived from the $^{12}\text{CO } J = 3-2$ data, assuming the emission to be optically thin (and distance 2 kpc), is $P_{\text{HVO}} > 1.7 \times 10^{38} \text{ g cm s}^{-1}$ and $E_{\text{HVO}} > 3.2 \times 10^{45} \text{ erg}$, using the formulation described in Bujarrabal et al. (2001). We adopt an inclination

⁹ All inclination angles, here and elsewhere in the Letter, are relative to the los.

angle of $\theta = 43^\circ$ (see Section 3.2). The HVO mass is $M_{\text{HVO}} = 6.2 \times 10^{-3} M_\odot$. We assume a uniform excitation temperature, $T_{\text{exc}} = 15-30 \text{ K}$ (resulting in a $\sim \pm 20\%$ uncertainty in P_{HVO} , E_{HVO} , and M_{HVO}). The HVO mass-loss rate is $> 5.6 \times 10^{-5} M_\odot \text{ yr}^{-1}$. For the EHVO we find that the mass, scalar momentum (P_{EHVO}), and kinetic energy (E_{EHVO}) are 7%, 21%, and 51% of the corresponding values for the HVO; its deprojected speed is $360-540 \text{ km s}^{-1}$, and expansion age is $\sim 130-305$ years, allowing for the EHVO’s inclination angle to vary from that of the HVO by $\sim \pm 12^\circ$, similar to the difference in their position angles.

The values of $P_{\text{HVO+EHVO}}$ and $E_{\text{HVO+EHVO}}$ in IRAS 16342 lie within the ranges of these quantities for PPNe, $10^{37-40} \text{ g cm s}^{-1}$ and 10^{42-46} erg (Bujarrabal et al. 2001). The HVO cannot be driven by radiation pressure because its dynamical (expansion) timescale is much smaller than that required by radiation pressure to accelerate the observed bipolar outflow to its current speed, $t_{\text{rad}} > P_{\text{HVO}}/(L/c) \sim 7.3 \times 10^3$ years, given IRAS 16342’s luminosity of $L_* = 6000 L_\odot$.

3.2. A Central Torus

The $\text{H}^{13}\text{CN } J = 4-3$ emission in channels near the systemic velocity, $V_{\text{lsr}} = 43.86-46.4 \text{ km s}^{-1}$ (Figure 4(a)), shows two blobs along an axis at PA $\sim 133^\circ$ implying an inclined, equatorial torus or squat-cylindrical structure. The panels at $V_{\text{lsr}} = 64.2-61.66 \text{ km s}^{-1}$ ($V_{\text{lsr}} = 31.14-28.6 \text{ km s}^{-1}$) presumably show the redshifted (blueshifted) parts of this structure to the SW (NE), consistent with it being an equatorial structure that engirdles the bipolar lobes. A PV plot along the torus major axis (Figure 4(b)) shows the characteristic elliptical shape expected for an expanding torus (since the beam-size has a relatively large extent at PA $\sim 43^\circ$, the cut shows emission

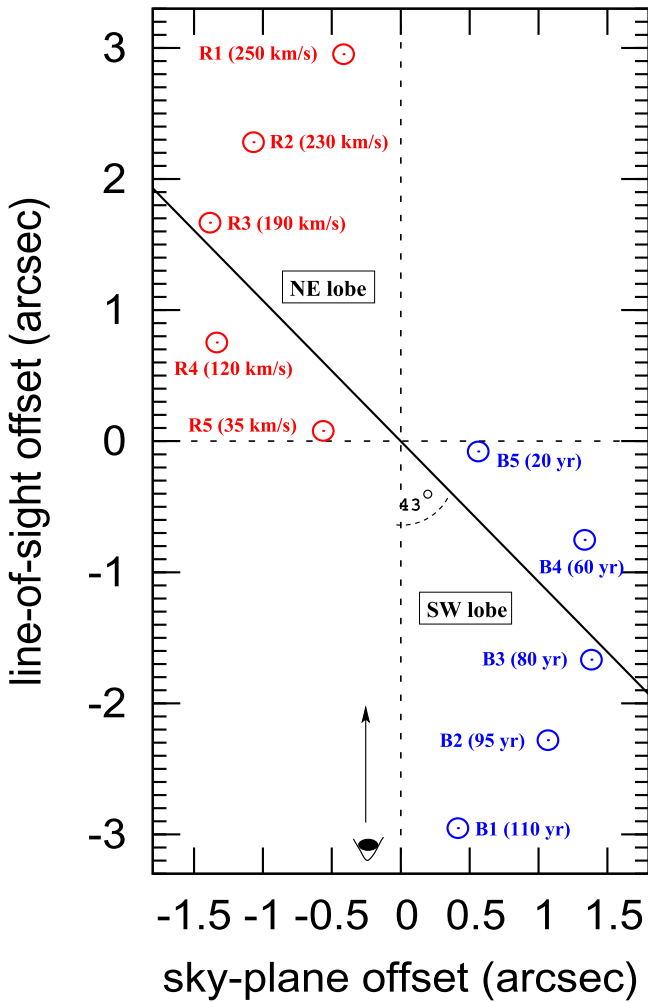


Figure 3. Blob locations in the SW and NE lobes along the line-of-sight (los), derived assuming a uniform outflow velocity (250 km s^{-1}). Blob ages (radial velocities), which are identical for identically numbered blobs, are shown for the SW (NE) lobe. Since we have assumed that the outflow velocity is the same as that of blobs B1 and R1, we cannot directly derive their los offsets; their adopted locations are based on other considerations (see the text). The sloping black line shows the axis of the central torus.

from all regions of the torus). The observed PV plot along the minor axis (Figure 4(c)) shows the approaching (receding) parts of the torus. Using the tilted torus’s projected size along its major axis ($0''.65$) and minor axis ($0''.44$) as measured from the PV plots, we find that the torus size is 1300 au, and its inclination is 43° , consistent with that of the bipolar lobes, $\sim 40^\circ$ (Setal99), and the high-velocity H_2O outflow axis, $\sim 45^\circ$ (Claussen et al. 2009). The deprojected torus expansion velocity is $V_{\text{tor}} = 20 \text{ km s}^{-1}$, and its expansion timescale is 160 years.

We show that the torus density is quite high. The observed peak $\text{H}^{13}\text{CN } J=4-3$ intensity in the torus at the systemic velocity is $37.5 \text{ mJy beam}^{-1}$ ($T_b \sim 8.8 \text{ K}$), implying a minimum H^{13}CN column density of $N(\text{H}^{13}\text{CN}) = 4 \times 10^{15} \text{ cm}^{-2}$ ($\delta V/1 \text{ km s}^{-1}$), for optically thin emission and a volume density adequate for exciting the $\text{H}^{13}\text{CN } J=4-3$ line (δV is the intrinsic line-width). This result is not sensitive to the assumed excitation temperature, 65 K, derived from the ^{12}CO and $^{13}\text{CO } J=3-2$ line intensities at the torus radius, $r \sim 0''.32$. Taking the radiatively connected column contributing to the line-center emission in the expanding torus to be

$\delta z = r \delta V/V_{\text{tor}}$, we find $\delta z = 5 \times 10^{14} \text{ cm}(\delta V/1 \text{ km s}^{-1})$ at $r = 0''.32$. If we assume the fractional abundance of H^{13}CN to be one-third that of HCN, $f(\text{HCN})$, then $n(\text{H}_2) = 3N(\text{H}^{13}\text{CN})/(f(\text{HCN})\delta z) = 1.1 \times 10^8 \text{ cm}^{-3}$, taking $f(\text{HCN}) = 2.2 \times 10^{-7}$ from observations of the oxygen-rich AGB star IK Tau (Decin et al. 2010). If we assume theoretical values, $f(\text{HCN}) = 9.06 \times 10^{-5}$ (Cherchneff 2006) or $f(\text{HCN}) = 2.12 \times 10^{-6}$ (Duari et al. 1999), then $n(\text{H}_2) = 2.7 \times 10^5 - 1.1 \times 10^7 \text{ cm}^{-3}$. Assuming that the ratio of the peak torus $\text{H}^{13}\text{CN } J=4-3$ intensity relative to that in the AGB CSE, (say) at $r = 0''.75$ (>14) is comparable to the corresponding density ratio, we infer that the torus density is $>3.3 \times 10^6 \text{ cm}^{-3}$, and $f(\text{HCN}) < 7.3 \times 10^{-6}$ (the AGB CSE density at $r = 0''.75$ is $\sim 2.4 \times 10^5 \text{ cm}^{-3}$; see Section 3.4).

3.3. The Central Continuum Source

We detect a compact, marginally resolved continuum source at the center,¹⁰ with (FWHM, undeconvolved) size $0''.64 \times 0''.48$, PA = 80° (beam is $0''.50 \times 0''.26$, PA = $-78^\circ.2$). The peak intensity and integrated flux are $0.25 \text{ Jy beam}^{-1}$ and 0.69 Jy at $\nu = 338.19 \text{ GHz}$.

The 0.87 mm continuum flux density observed with the 12-m APEX telescope’s $18''.6$ beam, $602 \pm 90 \text{ mJy}$ (Ladjal et al. 2010) is within errors, the same as our observed value (690 mJy). A 1.3 mm flux density of $277 \pm 13 \text{ mJy}$ (Guertler et al. 1996) was measured with the SEST $23''$ beam. Both these flux densities are significantly in excess of the values (~ 113 and 30 mJy at 0.886 and 1.3 mm) derived from an extrapolation of the 2D dust radiative-transfer model fit to IRAS 16342’s SED and near-IR polarized light imaging (Figure 1 of Murakawa & Izumiura 2012), in which the dominant mass component is a $1 M_\odot$ torus of radius 700–1000 au that includes grains with a radius up to $10 \mu\text{m}$.

Assuming that the excess 0.89 and 1.3 mm flux densities (577 and 247 mJy) are due to thermal dust emission¹¹ from the same region, we find that the dust emissivity power-law ($\chi_\nu \propto \nu^\beta$) index is $\beta \sim 0.46-0.27$ for a dust temperature of, $T_d \sim 30-120 \text{ K}$ (e.g., $T_d \sim 50 \text{ K}$ for the large grains in the torus of the PPN, IRAS 22036+5306; Sahai et al. 2006). The characteristic dust emission radius, assuming complete absorption of the starlight by intervening dust very close to the star and re-radiation at an effective temperature of $T_* = 650 \text{ K}$ (Setal05), is given by $r_d = [L_*/(16\pi\sigma T_*^4)]^{1/2} T_d^{-(2+\beta/2)}$ (Setal99) and lies in the range $r_d \sim (2.0-0.08) \times 10^{17} \text{ cm}$. Since the observed outer radius of the dust emitting source, derived from its major axis (FWHM) of $0''.64$, is $\sim 0.1 \times 10^{17} \text{ cm}$, we infer that $T_d \sim 120 \text{ K}$ and $\beta \sim 0.27$. The low value of β at millimeter/submillimeter wavelengths implies that the grains are very large ($>\text{few mm}$); taking $\chi_\nu(0.85 \text{ mm}) = 1.4 \text{ cm}^2 \text{ g}^{-1}$ (Sahai et al. 2011), the dust mass of this large-grain component is, $M_d = 0.017 M_\odot$. Testing alternatives to the large-grain model, such as spinning dust and magnetic nanoparticles (e.g., Draine & Hensley 2012), will require continuum measurements at additional millimeter/submillimeter wavelengths.

¹⁰ Peak located at (J2000) R.A. = 16:37:39.935, decl. = $-38:20:17.15$.

¹¹ The contribution of free-free emission is negligible given the upper limit on radio emission by Sahai et al. (2011).

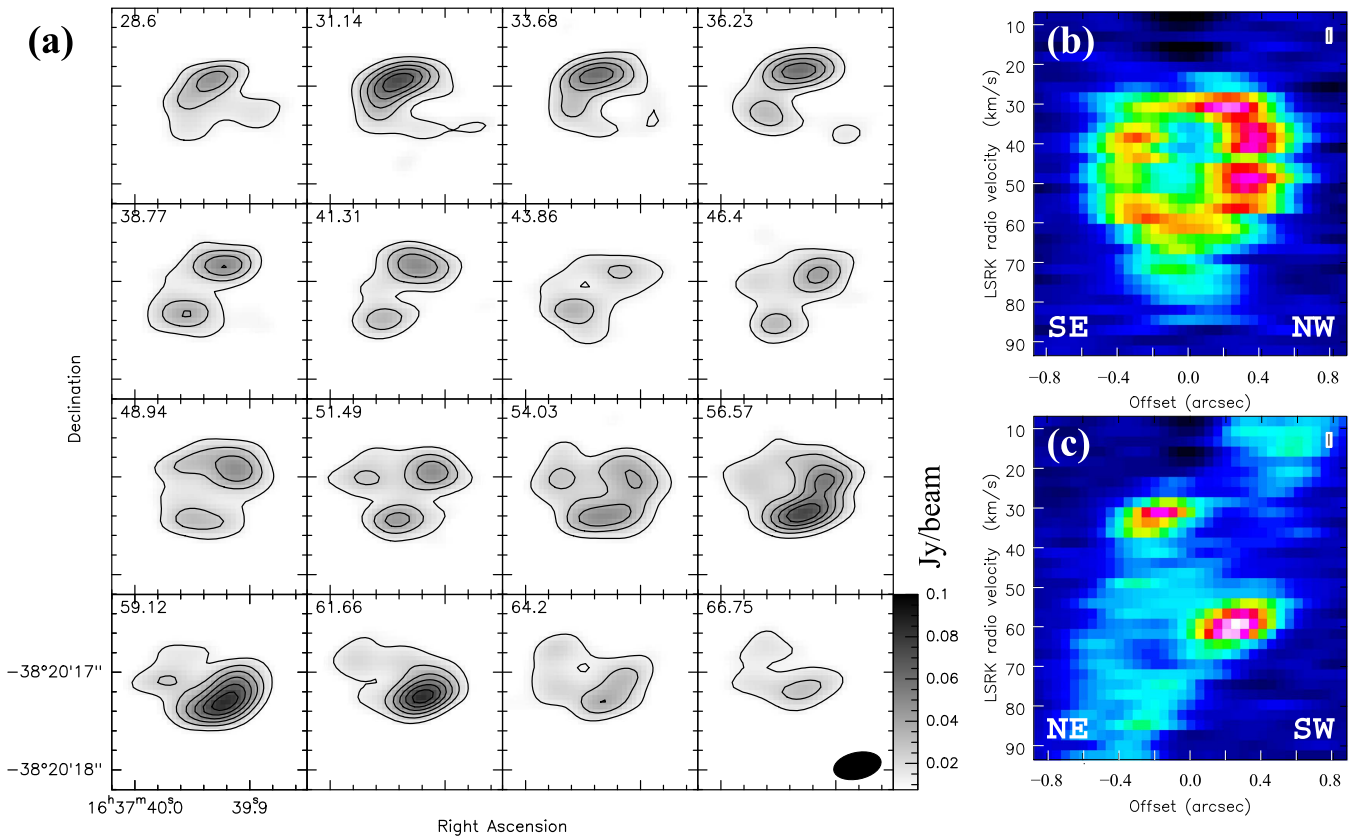


Figure 4. H¹³CN $J = 4-3$ emission from IRAS 16342: (a) channel maps near the systemic velocity, showing a tilted toroidal structure with major axis along PA = 133° (black ellipse in $V_{\text{lsr}} = 66.75 \text{ km s}^{-1}$ panel shows beam FWHM and orient, and the minimum contour level and step is $0.0125 \text{ Jy beam}^{-1}$); position-velocity cuts along the (b) major axis and (c) minor axis of the torus.

3.4. The Progenitor AGB Circumstellar Envelope

Our ALMA data provide direct evidence for the jet, and the presence of a surrounding CSE, that are needed for creating the observed bipolar morphology in IRAS 16342 as proposed earlier (Setal99, Setal05). In order to determine the CSE size, we first determine the radial direction along which the ¹²CO $J = 3-2$ line profile is minimally affected by the bipolar outflow from an inspection of the spectra in regions offset from the center in a direction orthogonal to the bipolar nebula. We find that the profile remains centered at the systemic velocity at all positions along PA $\sim 133^\circ$. We then determine the mean ¹²CO and ¹³CO intensities at $V_{\text{lsr}} = 44 \text{ km s}^{-1}$, i.e., the spectral channel closest to the systemic velocity, in two wedges of angular width 26° oriented along PA $\sim 133^\circ$ and PA $\sim -47^\circ$ as a function of radius, and average these. The resulting intensity cut traces emission from the AGB CSE out to a radius, $R_{\text{out}} \sim 1''.1$. At $r > R_{\text{out}}$, the intensity falls steeply (Figure 5).

The mean ¹²CO, ¹³CO, and H¹³CN line profiles at $r = \pm 0''.6$ along PA $\sim 133^\circ$ have widths at their base (FWZI) of ~ 100 , 85, and 38 km s^{-1} (Figure 2(b), inset). It is likely that the optically thick CO line profiles include contributions from low-density outflow material that does not emit significantly in the H¹³CN $J = 4-3$ line. The narrow H¹³CN $J = 4-3$ line emission can be seen out to $r \sim 0''.75$; we conclude that the FWZI of the latter provides the best estimate of the AGB CSE expansion velocity, i.e., $V_{\text{AGB}} \sim 19 \text{ km s}^{-1} / [1 - (0''.6/R_{\text{out}})^2]^{0.5} \sim 23 \text{ km s}^{-1}$.

The radial ¹³CO and ¹²CO $J = 3-2$ line intensities are very close to each other at all radii $r < \sim 0''.85$, implying that both of these lines are quite optically thick in this region. The

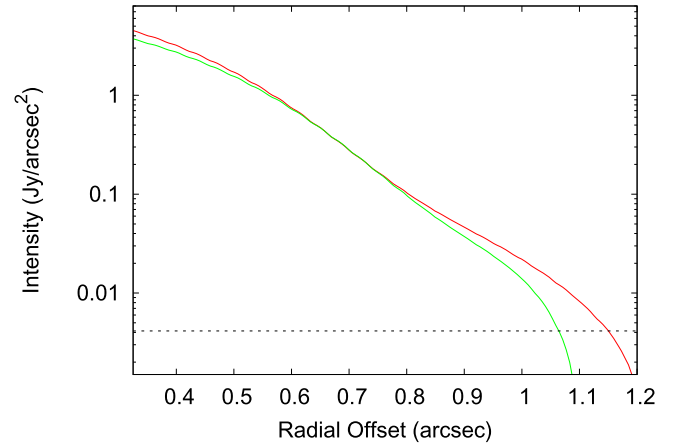


Figure 5. Mean radial ¹²CO (red) and ¹³CO (green) $J = 3-2$ intensity in the central velocity channel ($V_{\text{lsr}} = 44 \text{ km s}^{-1}$), in wedges of angular width 26° oriented along PA = 133° and PA = -47° (data from the two wedges have been averaged). The dashed horizontal line shows the 1σ noise level.

increasing difference between the ¹³CO and ¹²CO intensities for $r > \sim 0''.85$ signifies a decrease in the optical depth of these lines. From the observed ¹²CO to ¹³CO $J = 3-2$ intensity ratio of 1.56 at $r = 1''$, we derive a ¹³CO $J = 3-2$ optical depth of $\tau_{13} \sim 1$, an excitation temperature $T_{\text{exc}} \sim 4.1 \text{ K}$, and a mass-loss rate $\dot{M}_{\text{AGB}} > 3.5 \times 10^{-4} (V_{\text{AGB}}/23 \text{ km s}^{-1}) M_{\odot} \text{ yr}^{-1}$.

At $r > R_{\text{out}}$, both the ¹³CO and ¹²CO $J = 3-2$ intensities, and their ratio, $R_{I(13/12)}$, decrease rapidly—e.g., for a 4% increase in radius beyond $r = 1''.0$, $R_{I(13/12)}$ decreases by 28%. This decrease in $R_{I(13/12)}$ must result from a more rapid

decrease in the ^{13}CO optical depth (and thus its density) compared to ^{12}CO and cannot be due to interferometric loss of flux, especially since the maximum recoverable scale is $4''$. Without a sharp decrease in density in this region ($\sim 10^5 \text{ cm}^{-3}$ at $r \sim R_{\text{out}}$), $R_{I(13/12)}$ could not decrease rapidly because T_{exc} for both ^{13}CO and ^{12}CO $J = 3-2$ would remain very close to T_{kin} , and a sharp decrease in T_{kin} is unlikely. We therefore conclude that there is preferential photodissociation of ^{13}CO over ^{12}CO by the interstellar UV at $r \gtrsim 1''$, implying that the mass-loss rate at $r \gtrsim R_{\text{out}}$ must be $< 0.7 \times 10^{-6} M_{\odot} \text{ yr}^{-1} (V_{\text{AGB}}/23 \text{ km s}^{-1})^{0.5}$ (Mamon et al. 1988). The AGB expansion timescale at $r = R_{\text{out}}$ is 455 years ($23 \text{ km s}^{-1}/V_{\text{AGB}}$).

4. Discussion and Concluding Remarks

Our ALMA study of IRAS 16342 has characterized four different circumstellar components. The oldest of these is the AGB CSE (~ 455 years), followed by the EHVO (130–305 years) and torus (160 years), and the youngest is the HVO (~ 110 years). This sequence suggests that the torus and HVO were formed a few hundred years after a sharp increase in the mass-loss rate of the progenitor AGB star. The HVO (and possibly the EHVO) appears very soon after torus formation in IRAS 16342. Huggins (2007) derives the same result for a small sample of similar objects (late AGB stars, PPNe, and young PNe) and shows that it naturally favors the class of models in which a companion interacts with the central star. These include models where the build-up of a torus enhances the accretion rate in a disk around a companion that then drives jet-like outflows, or both spin-up and ejection of the stellar envelope of the primary occur during a common-envelope (CE) phase as the companion spirals in to the center of the AGB star. The detailed point-symmetry seen in IRAS 16342's outflows suggests a stable precessing or wobbling disk and argues against explosive scenarios (e.g., Matt et al. 2006).

If the jet activity in IRAS 16342 is driven by an accretion disk around a companion, then we can constrain the type of accretor as done in the study by Blackman & Lucchini (2014, hereafter BL14), who determine the minimum required accretion rates based on the properties of collimated outflows in PPNe, and compare these with the results of theoretical models. Using Equation (6) of BL14, we scale the accretion rate for IRAS 16342's HVO relative to that of CRL 618 and find that $\dot{M}_a(\text{IRAS 16342}) \sim 0.2 \times \dot{M}_a(\text{CRL 618})$. Hence, for IRAS 16342 (as for 15/19 objects in BL14's sample), Bondi–Hoyle–Lyttleton wind accretion and wind Roche-lobe overflow (M-WRLOF) accretion are ruled out for both white-dwarf and main-sequence accretors. Enhanced RLOF from the primary (i.e., at the Red Rectangle level; BL14) or accretion within CE evolution appear to be the most likely candidates for powering the HVO in IRAS 16342.

We are grateful to the late Patrick Huggins, who helped in defining the proposal that led to this study. We thank an

anonymous referee for helpful comments. R.S.'s contribution to this research was carried out at JPL, California Institute of Technology, under a contract with NASA. W.V., C.S.C., and G.Q.-L. acknowledge support from ERC consolidator grant 614264, Spanish MINECO grant AYA2012-32032, and ERC Grant Agreement 610256 (NANOCOSMOS), respectively. This Letter uses ALMA data set ADS/JAO.ALMA#2012.1.00678.S. ALMA is a partnership of ESO (representing its member states), NSF (USA) and NINS (Japan), together with NRC (Canada), NSC and ASIAA (Taiwan), and KASI (Republic of Korea), in cooperation with the Republic of Chile. The Joint ALMA Observatory is operated by ESO, AUI/NRAO and NAOJ.

References

- Balick, B., & Frank, A. 2002, *ARA&A*, 40, 439
 Balick, B., Huarte-Espinosa, M., Frank, A., et al. 2013, *ApJ*, 772, 20
 Blackman, E. G., & Lucchini, S. 2014, *MNRAS*, 440, L16
 Bujarrabal, V., Castro-Carrizo, A., Alcolea, J., & Sánchez Contreras, C. 2001, *A&A*, 377, 868
 Castro-Carrizo, A., Quintana-Lacaci, G., Neri, R., et al. 2010, *A&A*, 523, A59
 Cherchneff, I. 2006, *A&A*, 456, 1001
 Claussen, M. J., Sahai, R., & Morris, M. R. 2009, *ApJ*, 691, 219
 Cox, P., Lucas, R., Huggins, P. J., et al. 2000, *A&A*, 353, L25
 Decin, L., De Beck, E., Brünken, S., et al. 2010, *A&A*, 516, A69
 Draine, B. T., & Hensley, B. 2012, *ApJ*, 757, 103
 Duari, D., Cherchneff, I., & Willacy, K. 1999, *A&A*, 341, L47
 Gedhill, T. M., & Forde, K. P. 2012, *MNRAS*, 421, 346
 Guertler, J., Koempe, C., & Henning, T. 1996, *A&A*, 305, 878
 He, J. H., Imai, H., Hasegawa, T. I., Campbell, S. W., & Nakashima, J. 2008, *A&A*, 488, L21
 Huggins, P. J. 2007, *ApJ*, 663, 342
 Imai, H. 2007, in Proc. IAU Symp. 242, *Astrophysical Masers and their Environments*, ed. J. M. Chapman & W. A. Baan (Cambridge: Cambridge Univ. Press), 279
 Imai, H., Chong, S. N., He, J.-H., et al. 2012, *PASJ*, 64, 98
 Ladjal, D., Justanont, K., Groenewegen, M. A. T., et al. 2010, *A&A*, 513, A53
 Lee, C.-F., & Sahai, R. 2003, *ApJ*, 586, 319
 Likkell, L., & Morris, M. 1988, *ApJ*, 329, 914
 Likkell, L., Morris, M., & Maddalena, R. J. 1992, *A&A*, 256, 581
 Mamon, G. A., Glassgold, A. E., & Huggins, P. J. 1988, *ApJ*, 328, 797
 Matt, S., Frank, A., & Blackman, E. G. 2006, *ApJL*, 647, L45
 Murakawa, K., & Izumiura, H. 2012, *A&A*, 544, A58
 Neri, R., Kahane, C., Lucas, R., Bujarrabal, V., & Loup, C. 1998, *A&AS*, 130, 1
 Olofsson, H., Vlemmings, W. H. T., Maercker, M., et al. 2015, *A&A*, 576, L15
 Sahai, R., Le Mignant, D., Sánchez Contreras, C., Campbell, R. D., & Chaffee, F. H. 2005, *ApJL*, 622, L53
 Sahai, R., Morris, M. R., & Villar, G. G. 2011, *AJ*, 141, 134
 Sahai, R., Sánchez Contreras, C., Morris, M., & Claussen, M. 2007, *ApJ*, 658, 410
 Sahai, R., Te Lintel Hekkert, P., Morris, M., Zijlstra, A., & Likkell, L. 1999, *ApJL*, 514, L115
 Sahai, R., & Trauger, J. T. 1998, *AJ*, 116, 1357
 Sahai, R., Vlemmings, W. H. T., Huggins, P. J., Nyman, L.-Å., & Gonidakis, I. 2013, *ApJ*, 777, 92
 Sahai, R., Young, K., Patel, N. A., Sánchez Contreras, C., & Morris, M. 2006, *ApJ*, 653, 124
 Siódmiak, N., Meixner, M., Ueta, T., et al. 2008, *ApJ*, 677, 382
 Verhoeff, T., Waters, L. B. F. M., Verhoeff, A., et al. 2009, *A&A*, 503, 837