



Like this pattern? See more at my site, <http://www.innerchildcrochet.com>

**Difficulty:** Intermediate

**Sizes:** Toddler (18" head), Child (21" head), and Adult (23" head). Child size shown. This hat is very stretchy.

**Gauge:** 16 sts = 4" across ribbed pattern, slightly stretched.

### Abbreviations

c2b = hold 1 st at back, k next st, k st held at back

c2f = hold 1 st in front, k next st, k st held in front

k = knit

k2tog = knit 2 together

p = purl

p2tog = purl 2 together

sts = stitches

t2b = hold 1 st at back, k next st, p st held at back

t2f = hold 1 st in front, p next st, k st held in front



For increased speed and less hassle, I recommend checking out a tutorial on cabling without a cable needle.

### Materials

- ❖ About 50 grams Patons Classic Wool Merino, [100% wool; 223 yds/204 m per 100g skein]
- ❖ 1 set US #8/5mm double-point needles
- ❖ Tapestry Needle

Copyright 2007 Melissa Mall. All rights reserved.

Reproducing or transmitting this pattern by any means for any purpose other than personal use constitutes a violation of copyright law.

## Directions

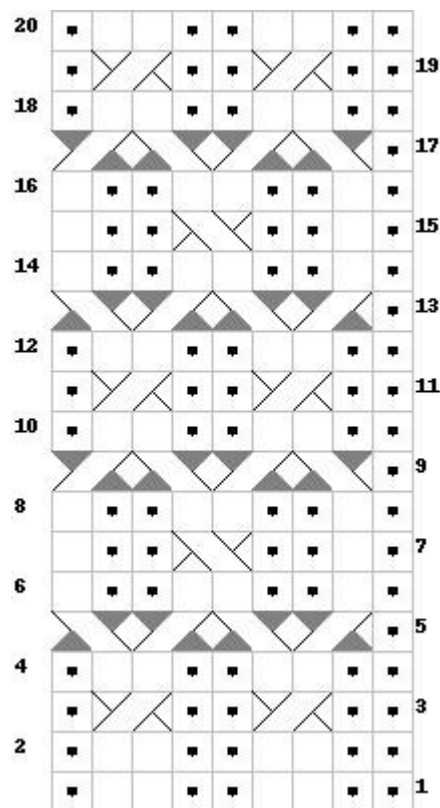
Directions are written for smallest size, with directions for larger sizes in parenthesis.

Cast on 72 (81, 90) sts. Join, not twisting, and arrange stitches as evenly as possible across needles.







\*p3, k2, p2, k2. Repeat from \* around. Work in pattern as established about 1 1/4" (1 1/2", 1 3/4").

Rearrange stitches on needles so that all breaks between needles occur across a p3 grouping. (It does not matter on which needle you place the middle purl.)

Begin at Row 3 of chart (or cable repeat), being sure to match your position on the chart or cable to your stitches. Repeat cable around on every pair of k2 ribs – 8 (9, 10) cables around.



### Key

	= knit		= c2b		= t2f
	= purl		= c2f		= t2b

### Cable Repeat:

Row 1: p2, k2, p2, k2, p1  
 Row 2: p2, k2, p2, k2, p1  
 Row 3: p2, c2b, p2, c2b, p1  
 Row 4: p2, k2, p2, k2, p1  
 Row 5: p1, t2b, t2f, t2b, t2f  
 Row 6: p1, k1, p2, k2, p2, k1  
 Row 7: p1, k1, p2, c2f, p2, k1  
 Row 8: p1, k1, p2, k2, p2, k1  
 Row 9: p1, t2f, t2b, t2f, t2b  
 Row 10: p2, k2, p2, k2, p1  
 Row 11: p2, c2b, p2, c2b, p1  
 Row 12: p2, k2, p2, k2, p1  
 Row 13: p1, t2b, t2f, t2b, t2f

Row 14: p1, k1, p2, k2, p2, k1  
 Row 15: p1, k1, p2, c2f, p2, k1  
 Row 16: p1, k1, p2, k2, p2, k1  
 Row 17: p1, t2f, t2b, t2f, t2b  
 Row 18: p2, k2, p2, k2, p1  
 Row 19: p2, c2b, p2, c2b, p1  
 Row 20: p2, k2, p2, k2, p1

Continue in rib pattern [p3, k2, p2, k2] until piece measures 6" (6 1/2", 7 1/2") from cast-on edge.



***Decrease Section:***

Round 1: \*p2tog, p1, k2, p2, k2.

Repeat from \* around. 64 (72, 80) stitches remaining.

Rounds 2-3: \*p2, k2. Repeat from \* around.

Round 4: \*p2tog, k2. Repeat from \* around. 48 (54, 60) stitches remaining.

Round 5: \*p1, k2tog. Repeat from \* around. 32 (36, 40) stitches remaining.

Rounds 6-8: k2tog around until 4 (5, 5) stitches remain. Break yarn, leaving a tail several inches long. Thread tail through remaining stitches, pull tight. Weave in ends.