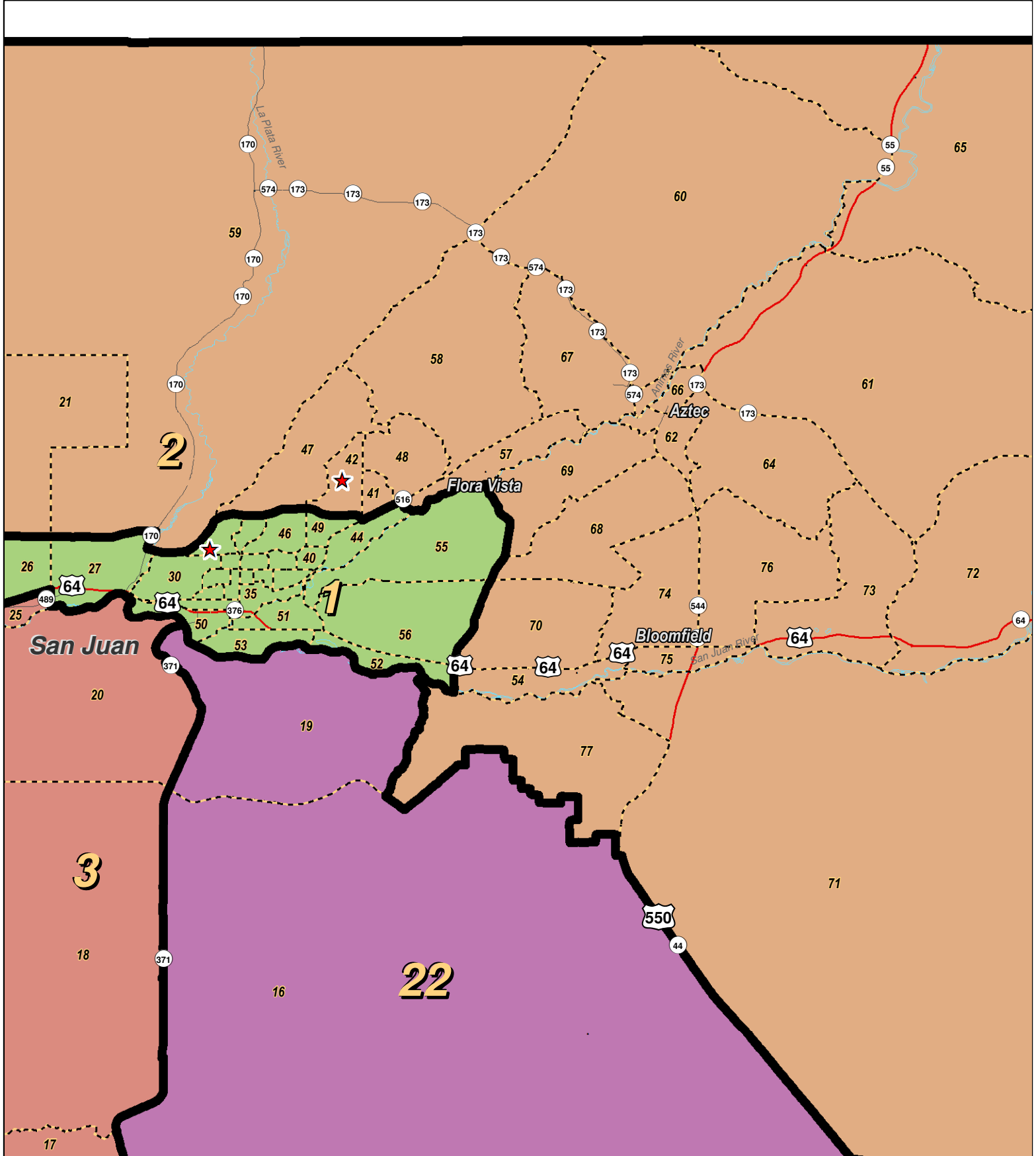


**LEGEND** Created: January 31, 2012

Precincts	Rivers	Interstate
Counties	Lakes / Ponds	US Highway
		State Highway

Research & Polling, Inc. distributes this map assuming no liability for any errors, omissions, or inaccuracies in the information provided regardless of the cause in reliance upon any maps.

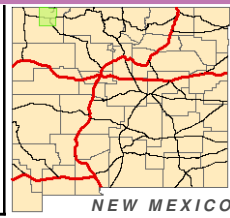




0 1 2 3 4  
Miles

**RESEARCH & POLLING INC.**

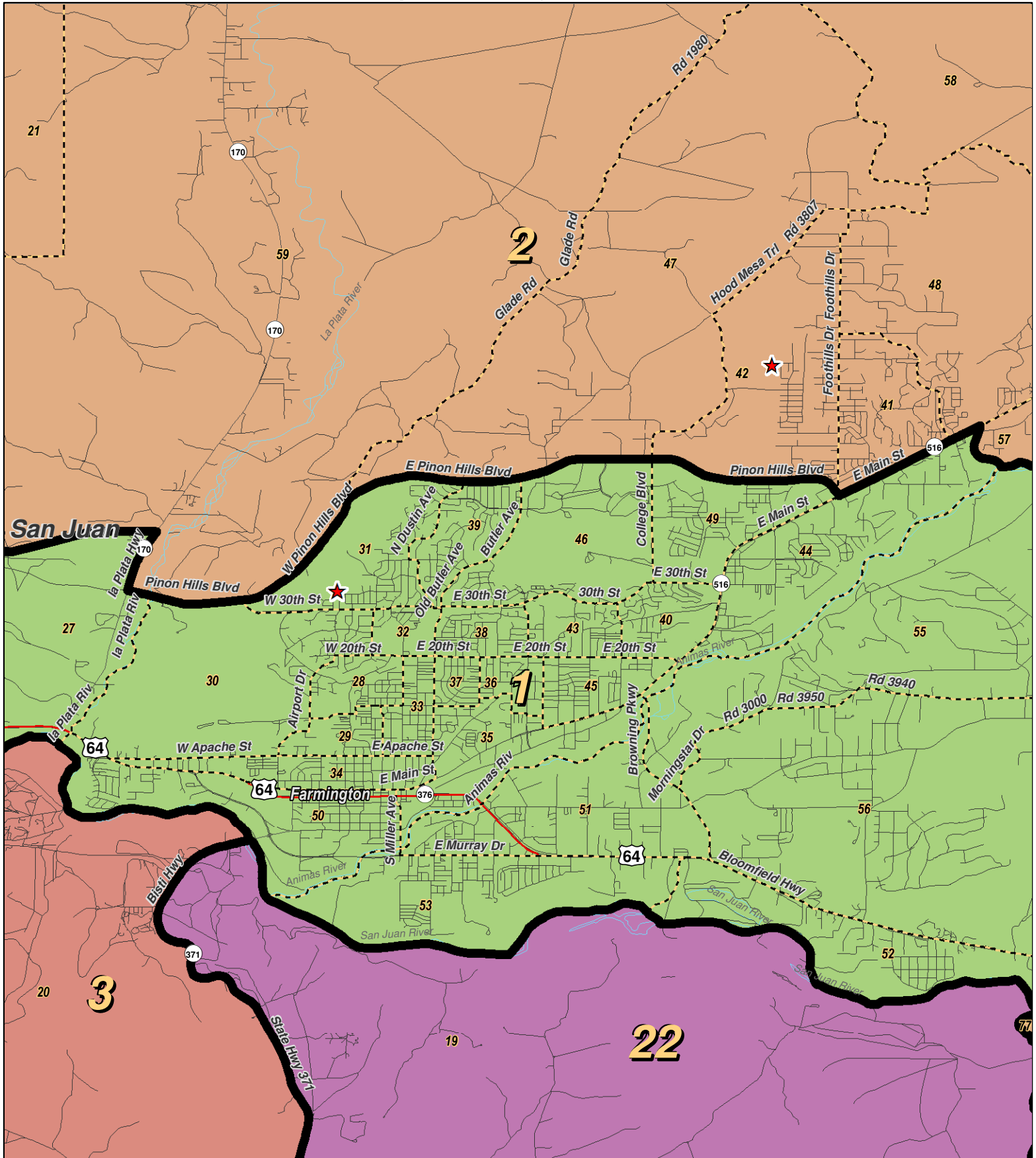
For the New Mexico Legislative Council Service



**LEGEND** Created: January 18, 2012

- ★ Legislators
- Precincts
- Counties
- ~ Rivers
- ~ Lakes / Ponds
- Interstate
- US Highway
- State Highway

Research & Polling, Inc. distributes this map assuming no liability for any errors, omissions, or inaccuracies in the information provided regardless of the cause in reliance upon any maps.



0 1 2 Miles

**RESEARCH & POLLING INC.**

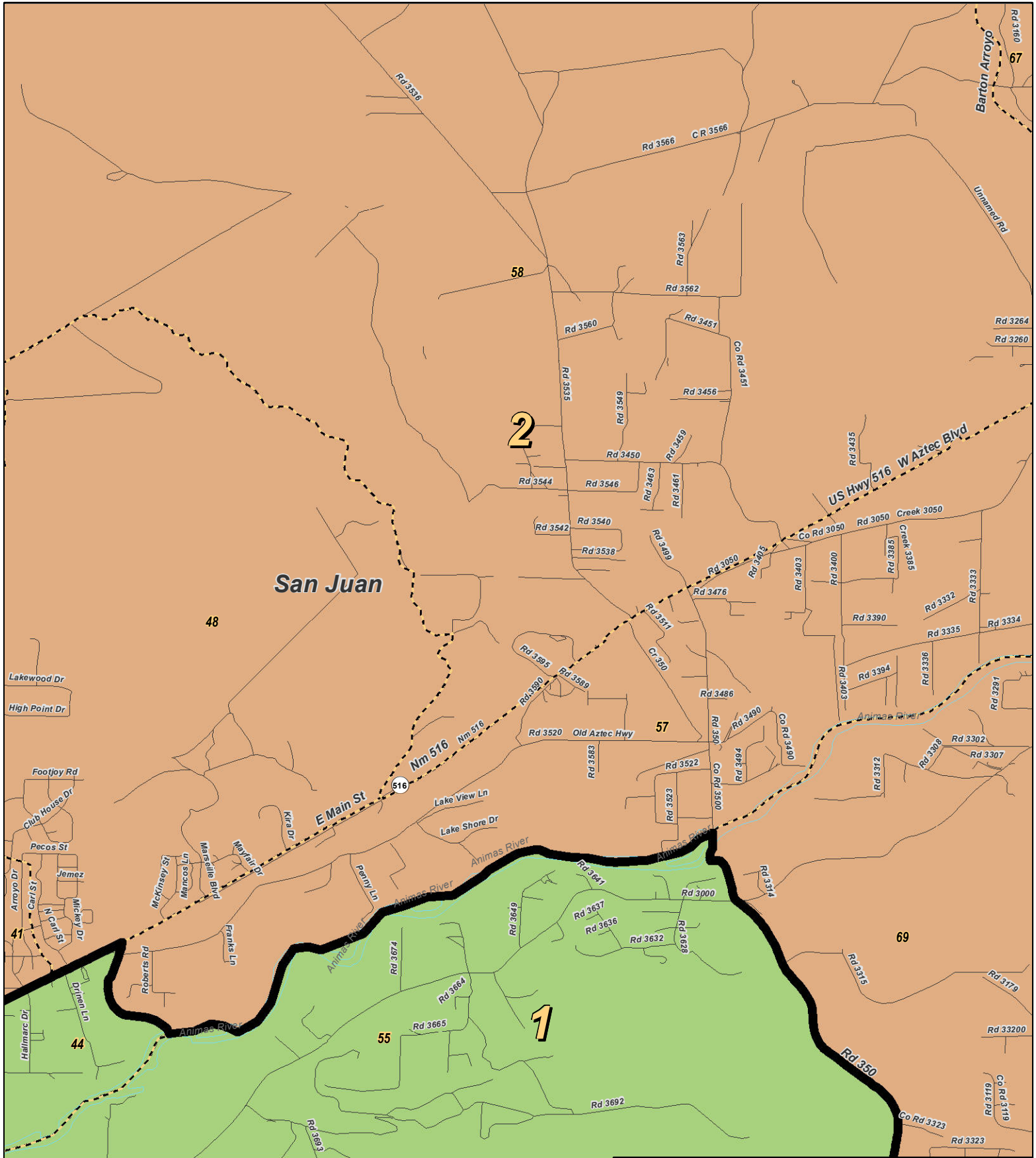
For the New Mexico Legislative Council Service



**LEGEND** Created: January 18, 2012

- ★ Legislators
- ▭ Precincts
- ▭ Counties
- ~ Rivers
- ~ Lakes / Ponds
- ~ Interstate
- ~ US Highway
- ~ State Highway

Research & Polling, Inc. distributes this map assuming no liability for any errors, omissions, or inaccuracies in the information provided regardless of the cause in reliance upon any maps.



0 0.9 Miles

**RESEARCH & POLLING INC.**

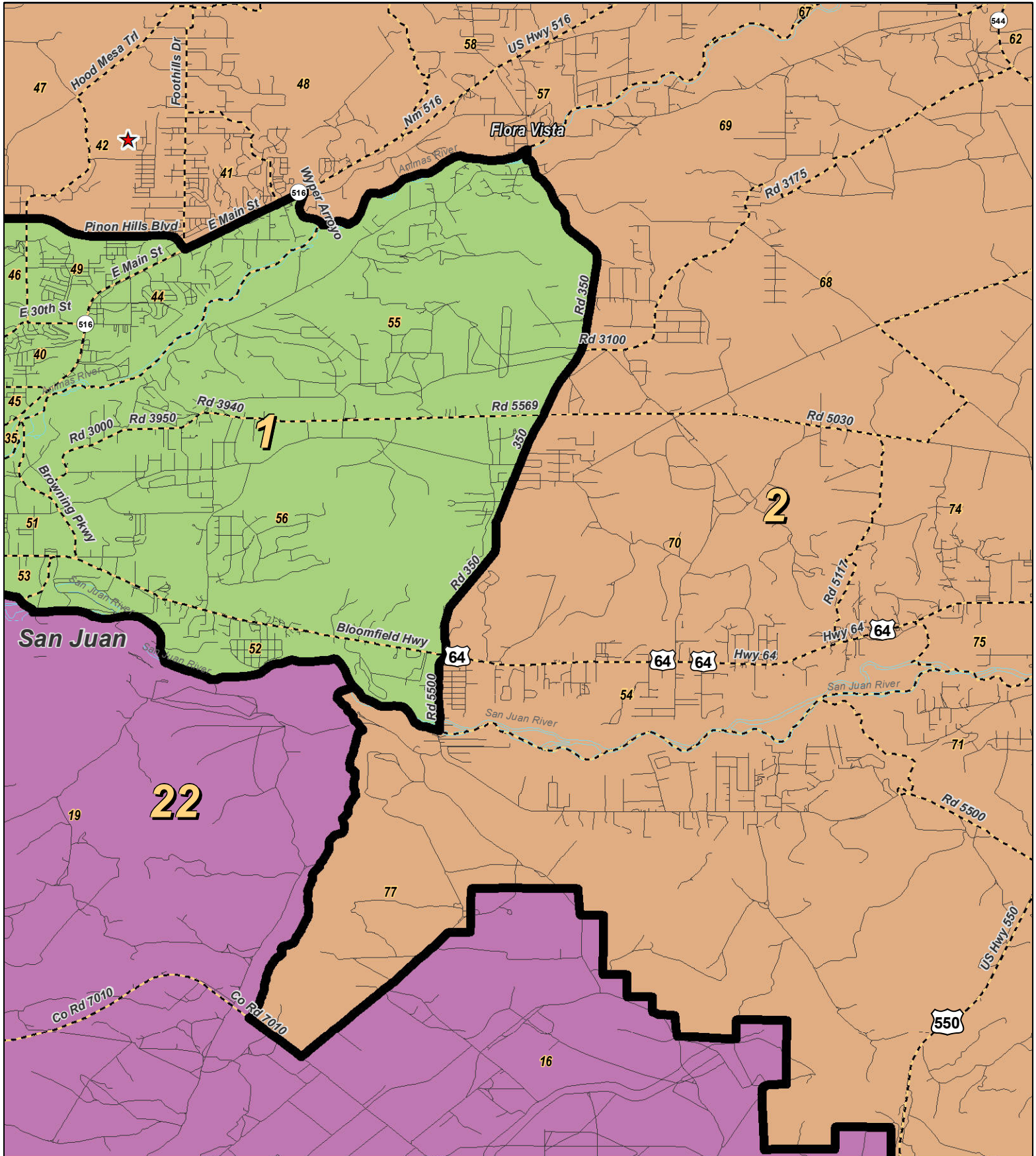
For the New Mexico Legislative Council Service



**LEGEND** Created: January 23, 2012

- ★ Legislators
- ▭ Precincts
- ▭ Counties
- ~ Rivers
- ~ Lakes / Ponds
- ~ Interstate
- ~ US Highway
- ~ State Highway

Research & Polling, Inc. distributes this map assuming no liability for any errors, omissions, or inaccuracies in the information provided regardless of the cause in reliance upon any maps.



0 1 2 Miles

**RESEARCH & POLLING INC.**

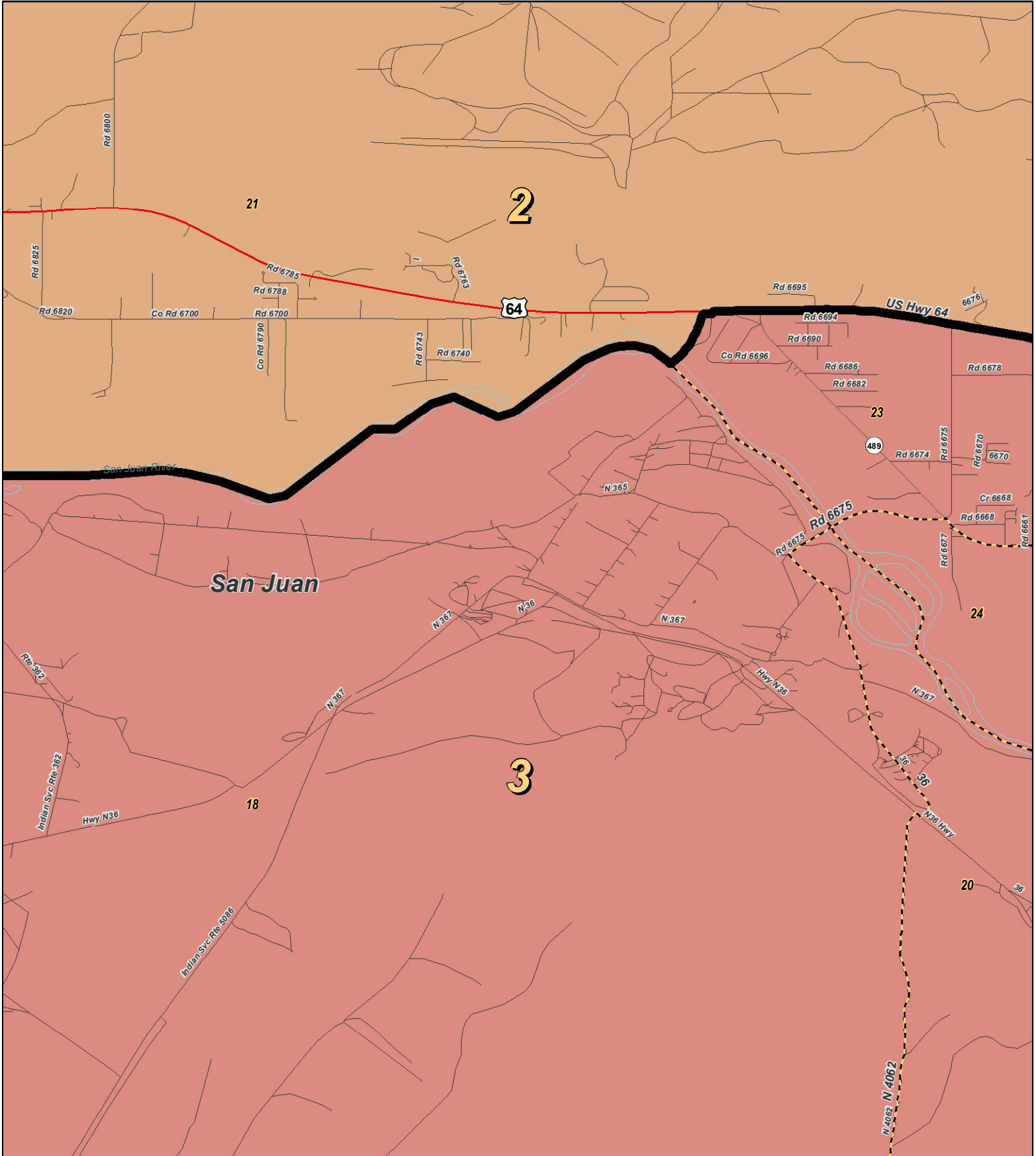
For the New Mexico Legislative Council Service



**LEGEND** Created: January 23, 2012

★ Legislators	~ Rivers	~ Interstate
▭ Precincts	~ Lakes / Ponds	~ US Highway
▭ Counties		~ State Highway

Research & Polling, Inc. distributes this map assuming no liability for any errors, omissions, or inaccuracies in the information provided regardless of the cause in reliance upon any maps.



0 0.9 Miles

**RESEARCH & POLLING INC.**

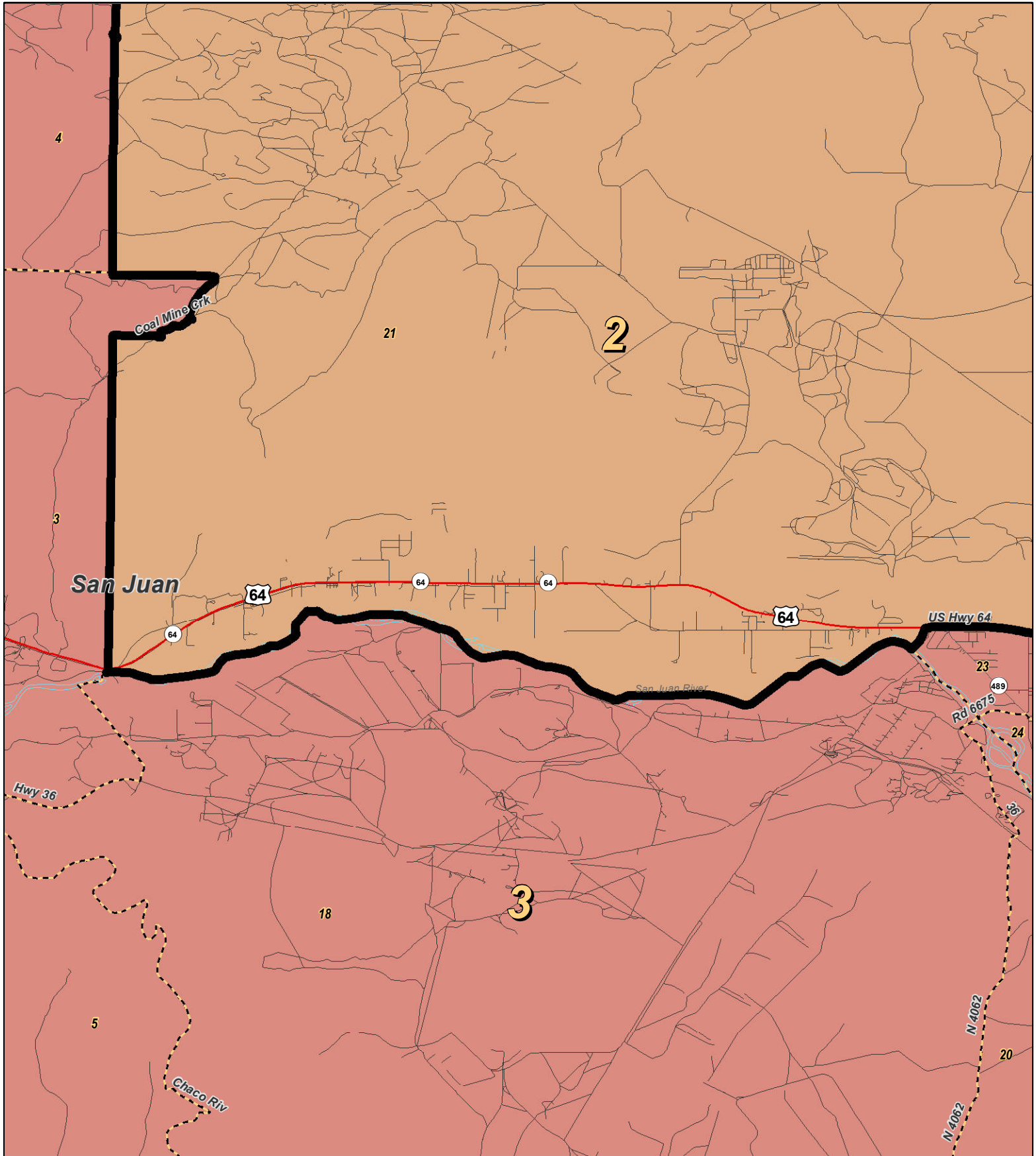
For the New Mexico Legislative Council Service



**LEGEND** Created: January 23, 2012

★ Legislators	~ Rivers	~ Interstate
□ Precincts	☁ Lakes / Ponds	~ US Highway
▭ Counties		~ State Highway

Research & Polling, Inc. distributes this map assuming no liability for any errors, omissions, or inaccuracies in the information provided regardless of the cause in reliance upon any maps.



**RESEARCH & POLLING**  
INC.

For the New Mexico  
Legislative Council Service

0 1 2 Miles

N



**LEGEND** Created: January 23, 2012

★ Legislators	~ Rivers	~ Interstate
▭ Precincts	~ Lakes / Ponds	~ US Highway
▭ Counties		~ State Highway

Research & Polling, Inc. distributes this map assuming no liability for any errors, omissions, or inaccuracies in the information provided regardless of the cause in reliance upon any maps.





**NM Senate  
Plaintiffs, Intervenors, and Executive Defendants Joint  
(Court Adopted January 2012)**

**2010 Census  
Redistricting**

**District: 2**

<b>District: 2</b>				<b>Adult Non-Hispanic</b>		
<b>County/ Precinct</b>	<b>Total Population</b>	<b>Adult Hispanic</b>	<b>Total Adult Native American</b>	<b>White</b>	<b>Native American</b>	<b>Black</b>
SJ 21	1,726	8.1%	45.1%	46.7%	43.0%	0.7%
SJ 41	1,703	11.8%	3.9%	83.2%	2.9%	0.2%
SJ 42	1,418	11.2%	7.1%	80.8%	5.4%	0.4%
SJ 47	411	13.6%	13.0%	72.6%	11.1%	0.6%
SJ 48	1,135	16.4%	7.1%	76.0%	5.4%	0.0%
SJ 54	2,405	35.3%	14.5%	49.6%	12.4%	0.8%
SJ 57	1,870	12.8%	4.8%	81.7%	3.8%	0.2%
SJ 58	1,410	22.6%	5.2%	72.8%	3.0%	0.0%
SJ 59	2,350	12.1%	11.5%	75.6%	9.7%	0.4%
SJ 60	854	15.3%	4.1%	79.5%	2.3%	0.5%
SJ 61	2,173	12.1%	3.3%	84.1%	2.4%	0.2%
SJ 62	1,429	20.2%	7.1%	72.8%	4.2%	0.3%
SJ 63	1,672	21.6%	14.3%	64.1%	12.3%	0.3%
SJ 64	1,166	21.1%	7.2%	72.1%	5.2%	0.1%
SJ 65	1,135	8.3%	2.7%	89.0%	2.2%	0.0%
SJ 66	1,108	17.9%	7.0%	75.0%	5.1%	0.2%
SJ 67	2,713	20.7%	8.1%	70.6%	6.6%	0.2%
SJ 68	1,386	23.5%	18.8%	58.4%	15.8%	1.0%
SJ 69	2,239	16.4%	10.8%	72.0%	8.5%	0.4%
SJ 70	1,787	32.0%	19.5%	49.1%	17.2%	0.3%
SJ 71	2,070	17.5%	23.8%	59.1%	21.2%	0.0%
SJ 72	1,755	39.1%	4.2%	56.9%	2.0%	0.1%
SJ 73	1,609	53.9%	6.7%	39.6%	5.0%	0.2%
SJ 74	3,608	27.6%	19.6%	52.9%	17.5%	0.4%
SJ 75	1,802	33.1%	18.1%	48.5%	15.9%	0.6%
SJ 76	2,736	25.6%	14.0%	59.9%	12.2%	0.4%
SJ 77	2,110	24.1%	11.3%	64.8%	9.1%	0.5%
<b>District Totals</b>	<b>47,780</b>	<b>22.0%</b>	<b>12.1%</b>	<b>65.7%</b>	<b>10.2%</b>	<b>0.3%</b>