

**LEGEND** Created: January 31, 2012

Precincts	Rivers	Interstate
Counties	Lakes / Ponds	US Highway
		State Highway

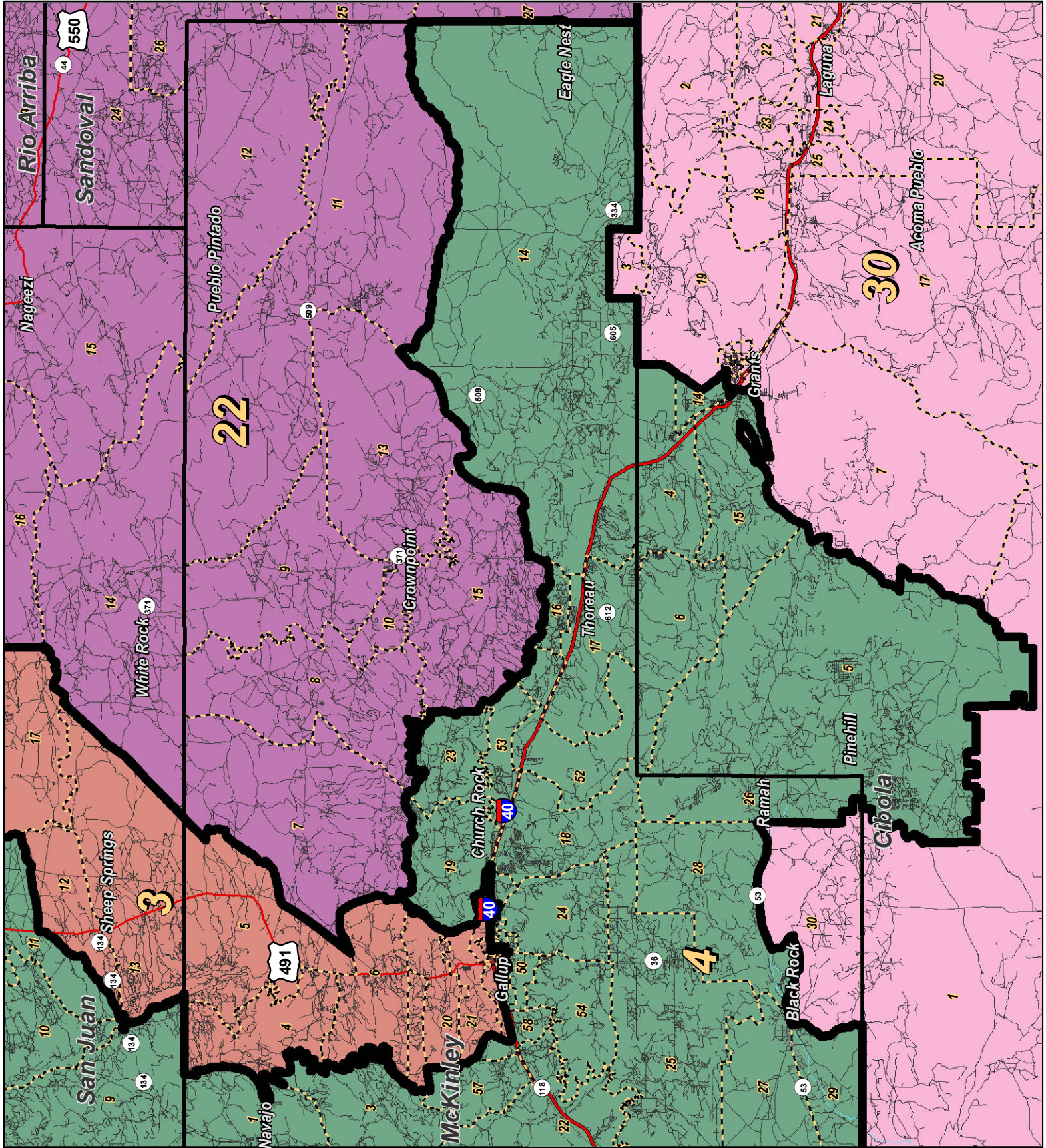
Research & Polling, Inc. distributes this map assuming no liability for any errors, omissions, or inaccuracies in the information provided regardless of the cause in reliance upon any maps.



For the New Mexico Legislative Council Service



NEW MEXICO



RESEARCH & POLLING, INC.

For the New Mexico Legislative Council Service

0 6 12 18 24 Miles

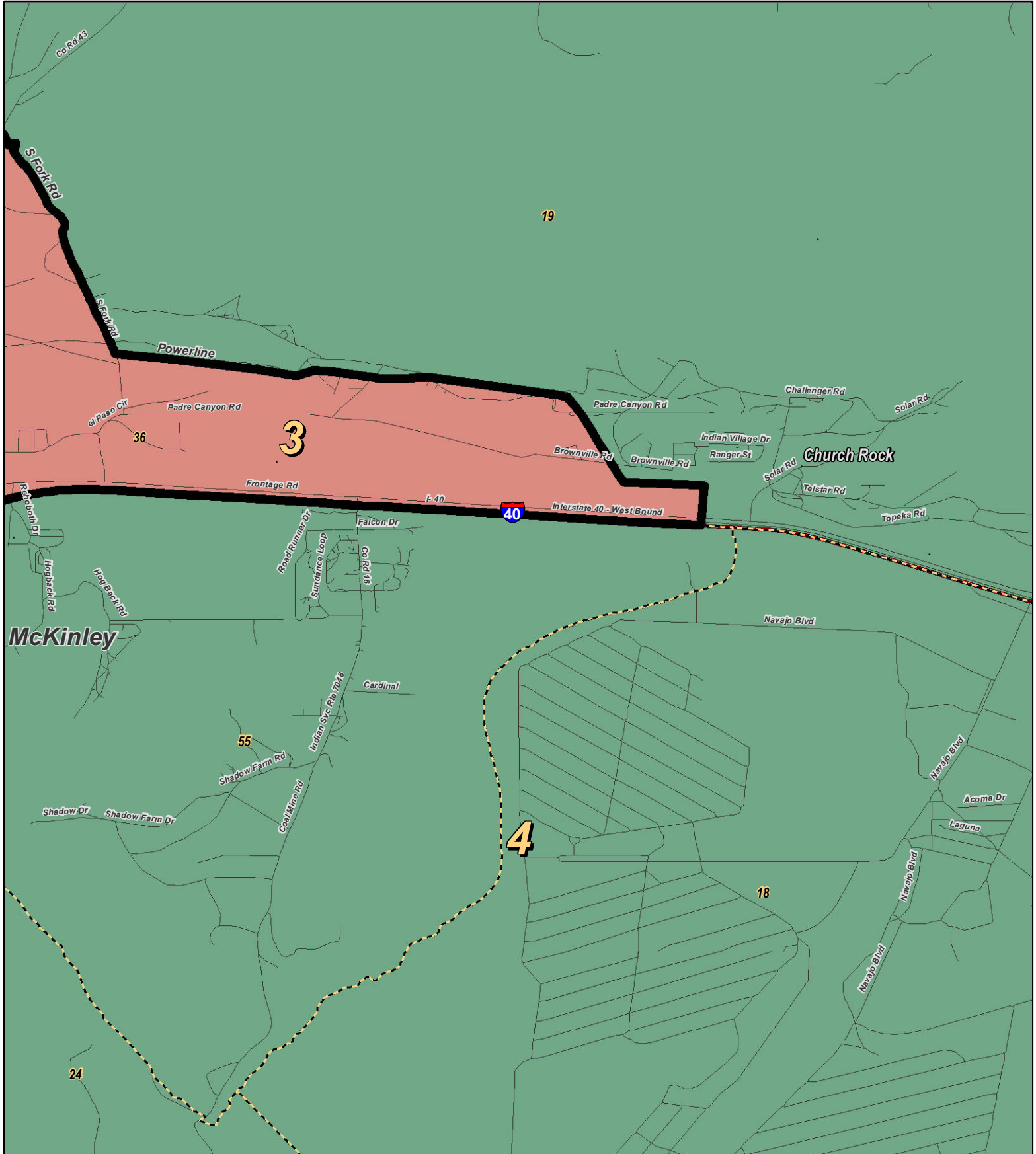
4 N

NEW MEXICO

**LEGEND** Created: January 30, 2012

Precincts	Rivers	Interstate
Counties	Lakes / Ponds	US Highway
		State Highway

Research & Polling, Inc. distributes this map assuming no liability for any errors, omissions, or inaccuracies in the information provided regardless of the cause in reliance upon any maps.



0 1 Miles

**RESEARCH & POLLING INC.**

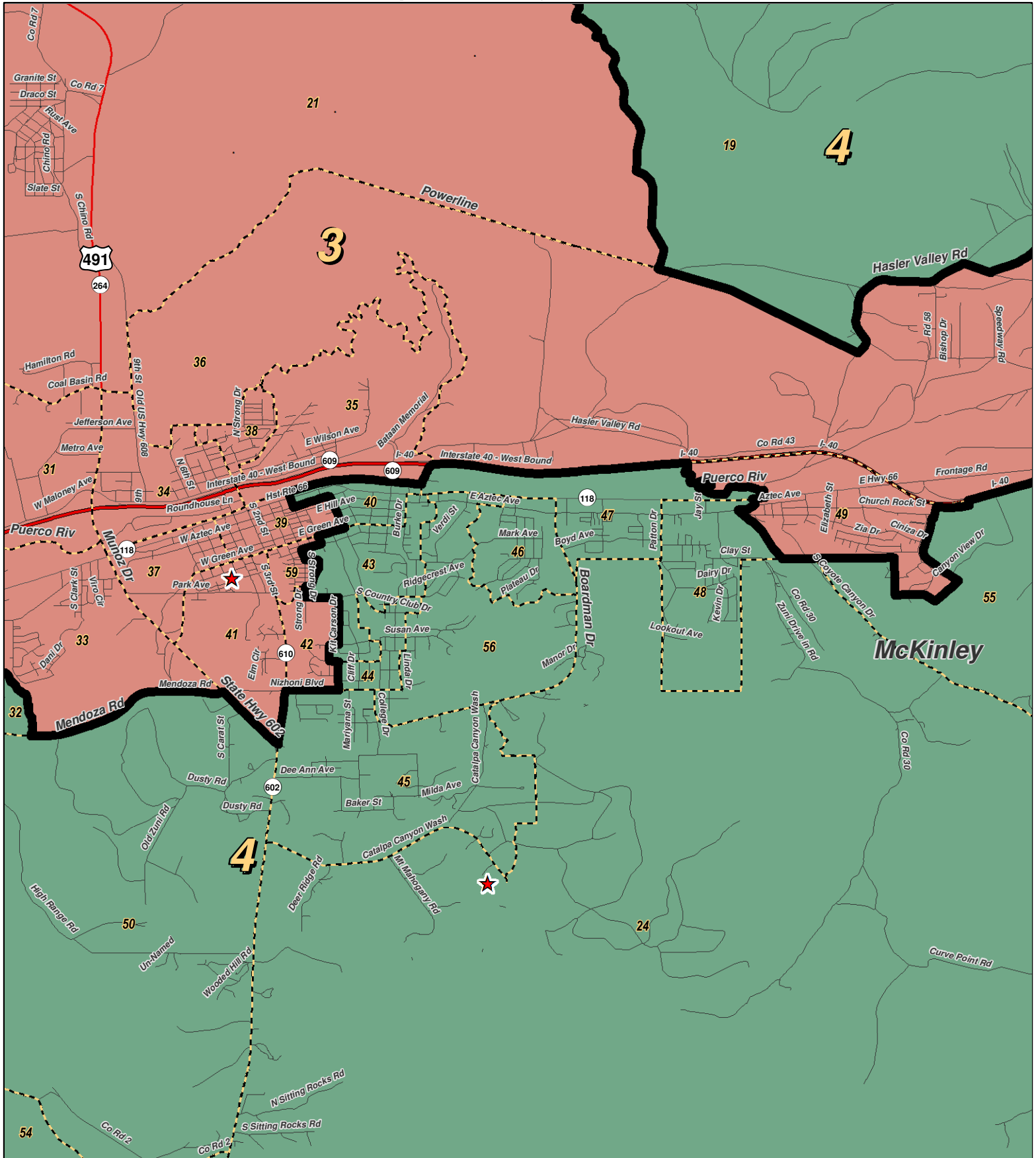
For the New Mexico Legislative Council Service



**LEGEND** Created: January 23, 2012

★ Legislators	~ Rivers	⚡ Interstate
▭ Precincts	☪ Lakes / Ponds	⚡ US Highway
▭ Counties		~ State Highway

Research & Polling, Inc. distributes this map assuming no liability for any errors, omissions, or inaccuracies in the information provided regardless of the cause in reliance upon any maps.



0 1 Miles

**RESEARCH & POLLING INC.**

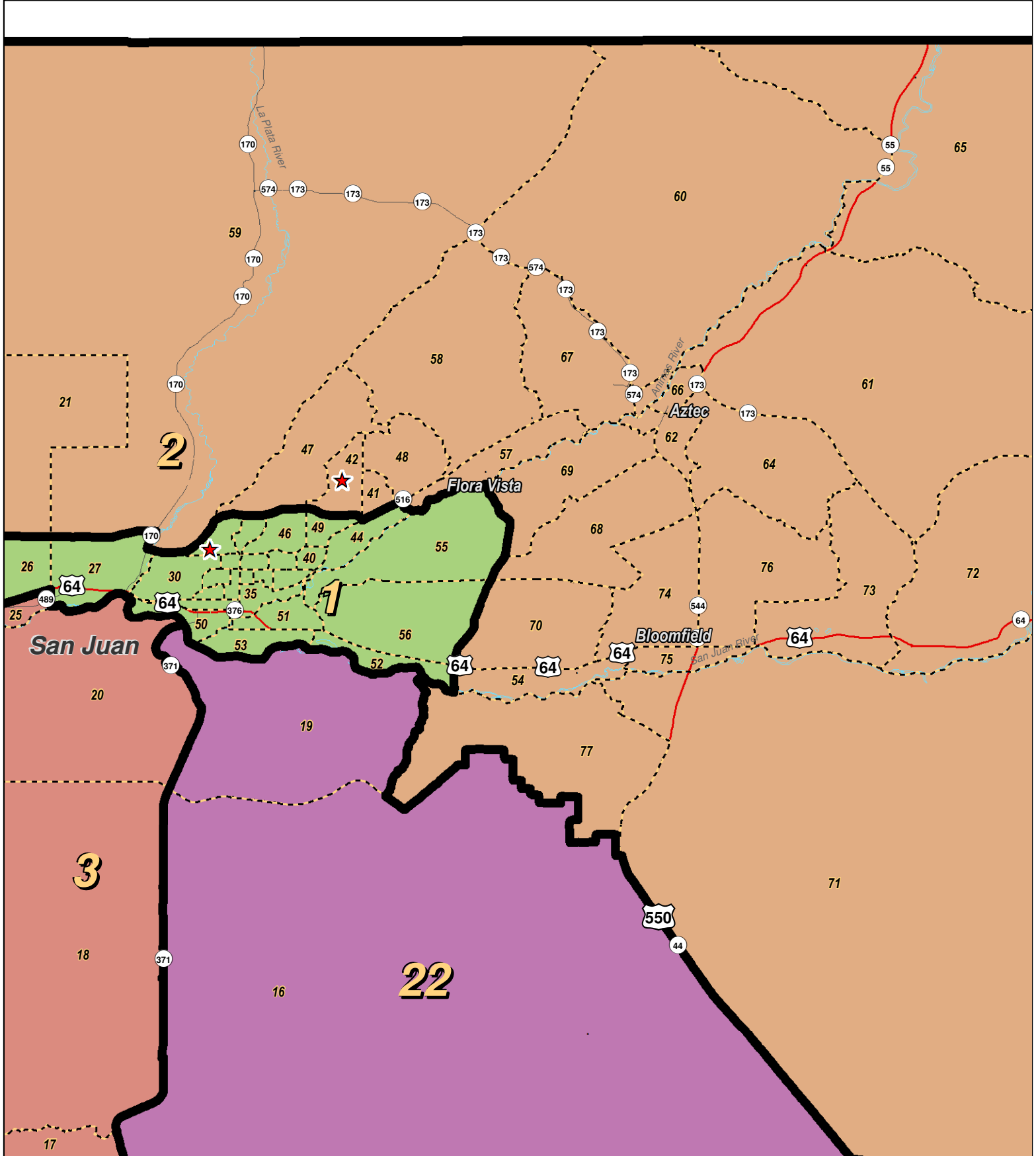
For the New Mexico Legislative Council Service



**LEGEND** Created: January 18, 2012

- ★ Legislators
- ▭ Precincts
- ▭ Counties
- ~ Rivers
- ~ Lakes / Ponds
- ~ Interstate
- ~ US Highway
- ~ State Highway

Research & Polling, Inc. distributes this map assuming no liability for any errors, omissions, or inaccuracies in the information provided regardless of the cause in reliance upon any maps.



0 1 2 3 4  
Miles

**RESEARCH & POLLING INC.**

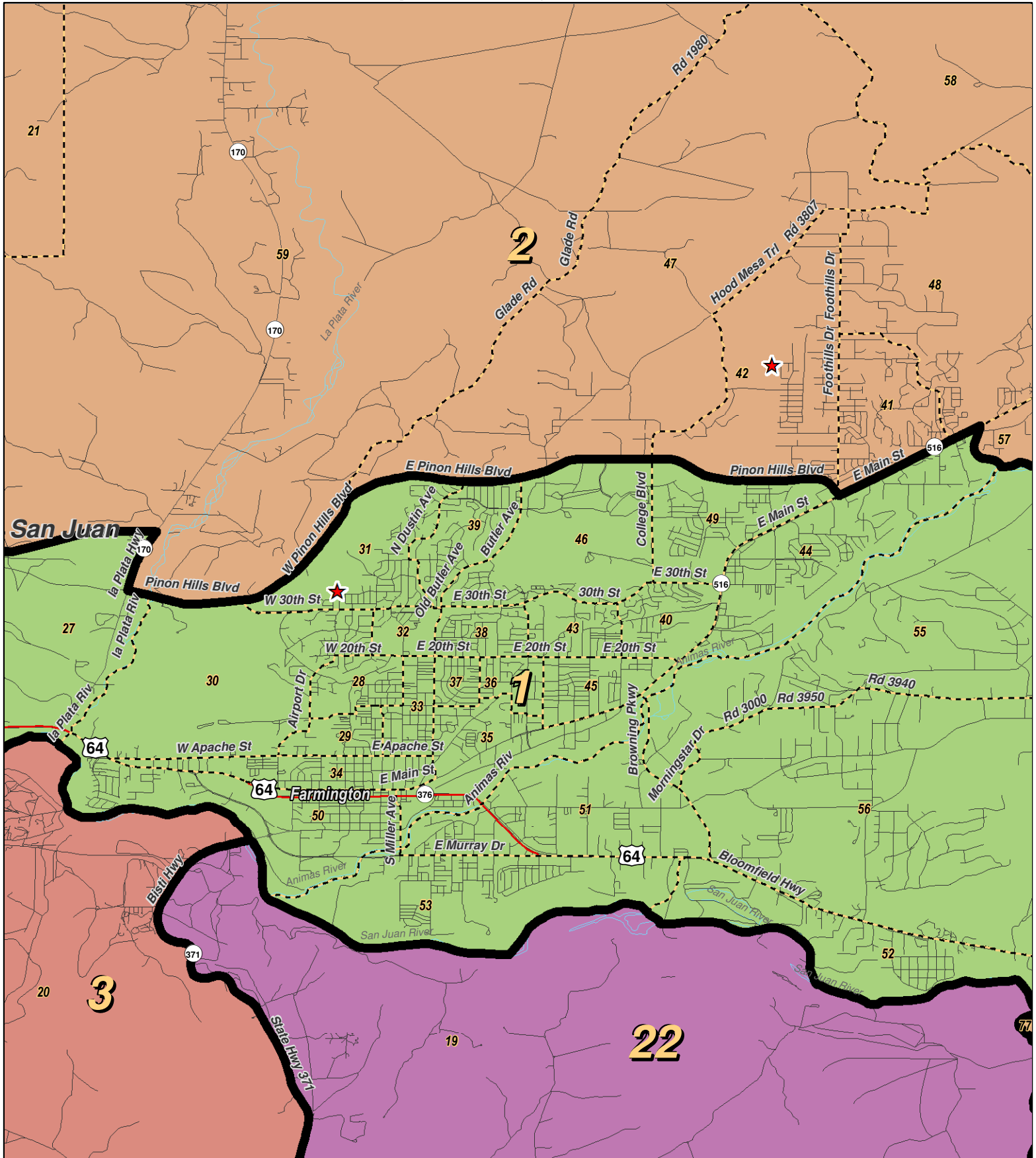
For the New Mexico Legislative Council Service



**LEGEND** Created: January 18, 2012

- ★ Legislators
- Precincts
- Counties
- ~ Rivers
- ~ Lakes / Ponds
- Interstate
- US Highway
- State Highway

Research & Polling, Inc. distributes this map assuming no liability for any errors, omissions, or inaccuracies in the information provided regardless of the cause in reliance upon any maps.



0 1 2 Miles

**RESEARCH & POLLING INC.**

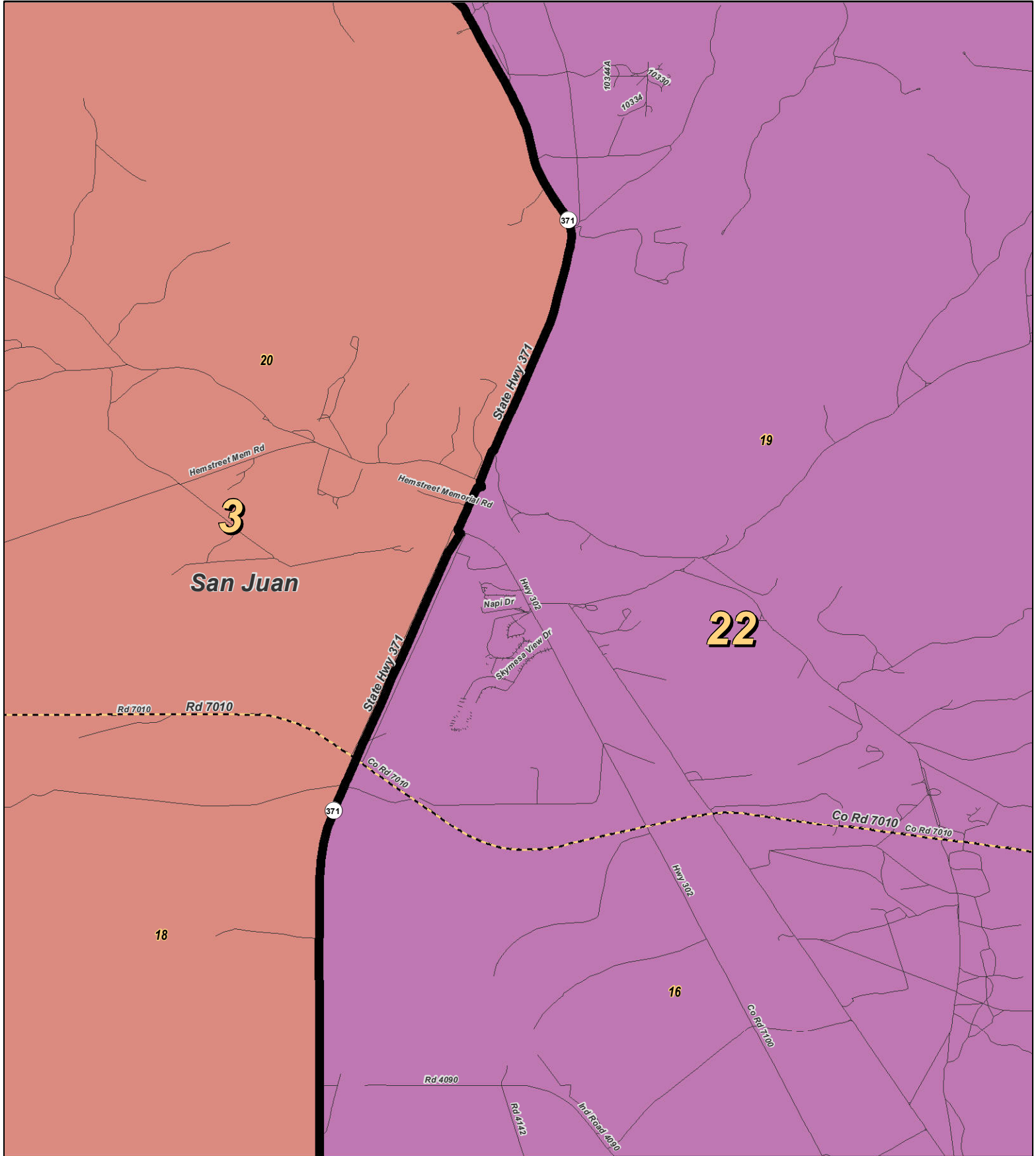
For the New Mexico Legislative Council Service



**LEGEND** Created: January 18, 2012

- ★ Legislators
- ▭ Precincts
- ▭ Counties
- ~ Rivers
- ~ Lakes / Ponds
- ~ Interstate
- ~ US Highway
- ~ State Highway

Research & Polling, Inc. distributes this map assuming no liability for any errors, omissions, or inaccuracies in the information provided regardless of the cause in reliance upon any maps.



0 1 Miles

**RESEARCH & POLLING INC.**

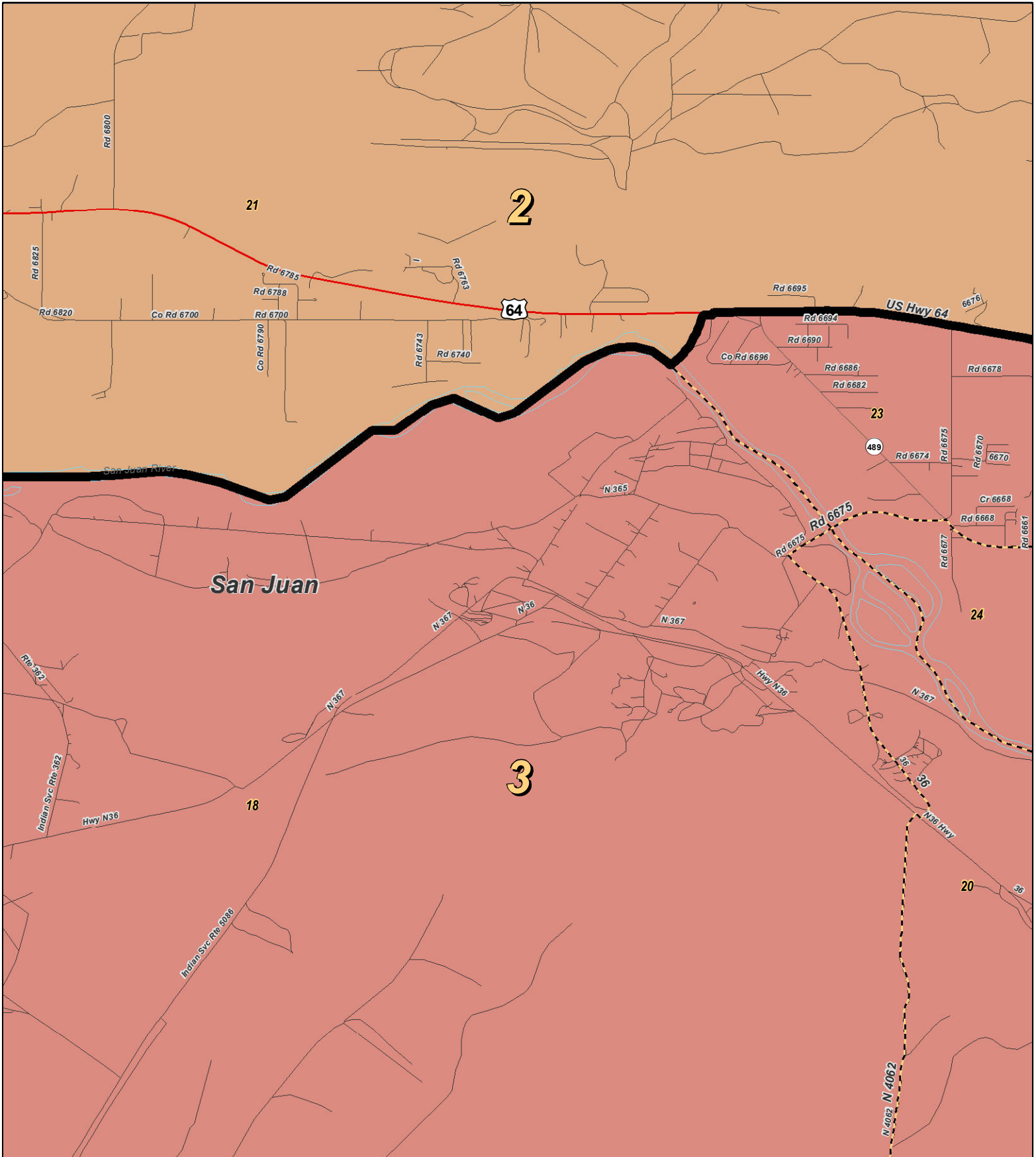
For the New Mexico Legislative Council Service



**LEGEND** Created: January 23, 2012

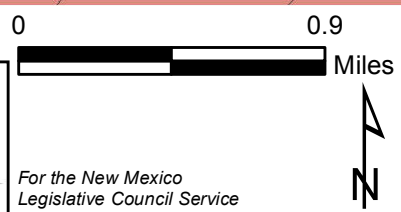
★ Legislators	~ Rivers	~ Interstate
▭ Precincts	☪ Lakes / Ponds	~ US Highway
▭ Counties		~ State Highway

Research & Polling, Inc. distributes this map assuming no liability for any errors, omissions, or inaccuracies in the information provided regardless of the cause in reliance upon any maps.



**RESEARCH & POLLING**  
INC.

For the New Mexico  
Legislative Council Service

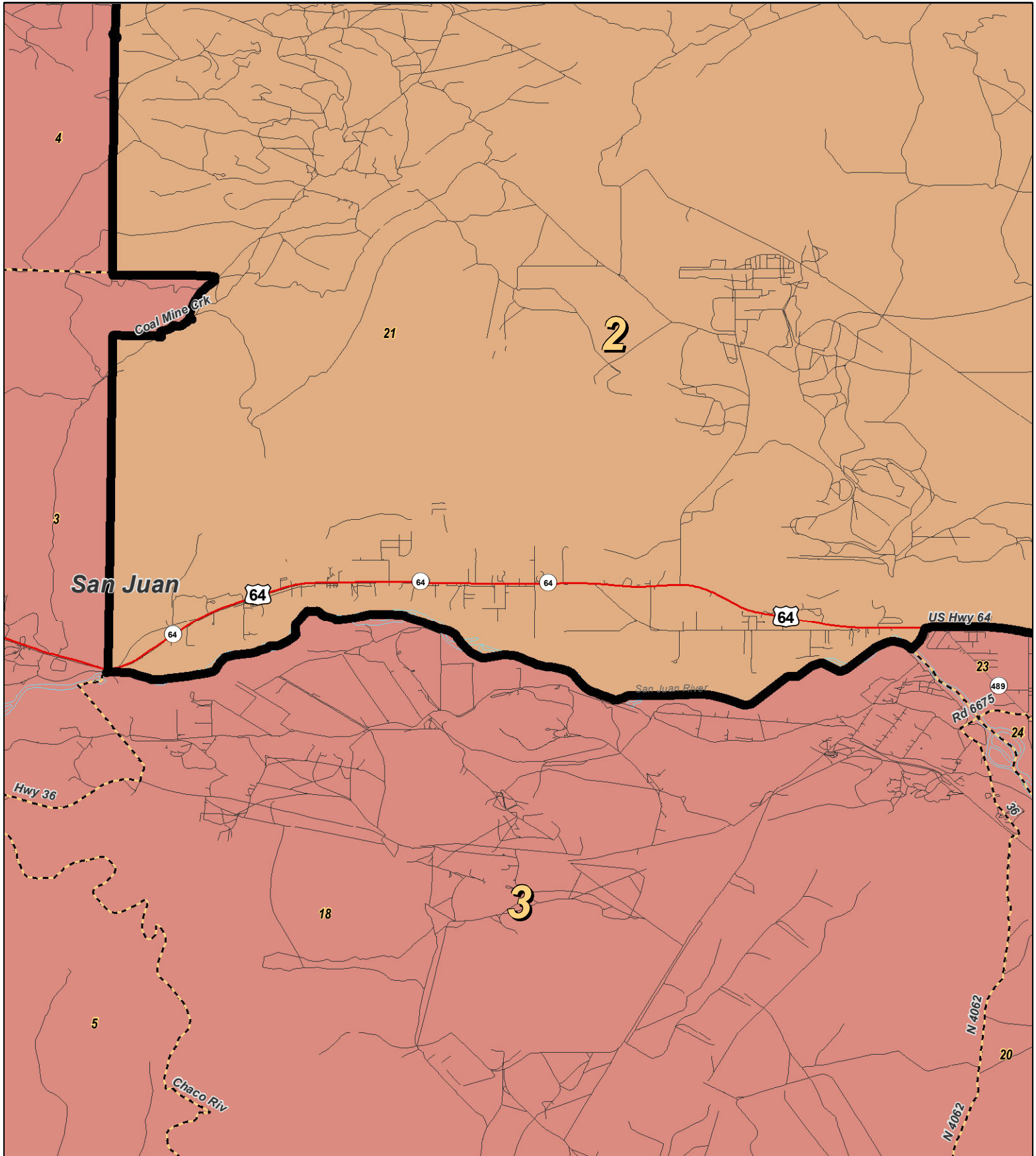


**LEGEND** Created: January 23, 2012

★ Legislators	~ Rivers	≡ Interstate
▭ Precincts	☪ Lakes / Ponds	≡ US Highway
▭ Counties		≡ State Highway

Research & Polling, Inc. distributes this map assuming no liability for any errors, omissions, or inaccuracies in the information provided regardless of the cause in reliance upon any maps.





**RESEARCH & POLLING INC.**

For the New Mexico Legislative Council Service

0 1 2 Miles

N



**LEGEND** Created: January 23, 2012

★ Legislators	~ Rivers	~ Interstate
▭ Precincts	~ Lakes / Ponds	~ US Highway
▭ Counties		~ State Highway

Research & Polling, Inc. distributes this map assuming no liability for any errors, omissions, or inaccuracies in the information provided regardless of the cause in reliance upon any maps.



**NM Senate  
Plaintiffs, Intervenors, and Executive Defendants Joint  
(Court Adopted January 2012)**

**2010 Census  
Redistricting**

**District: 3**

<b>District: 3</b>				<b>Adult Non-Hispanic</b>		
<b>County/ Precinct</b>	<b>Total Population</b>	<b>Adult Hispanic</b>	<b>Total Adult Native American</b>	<b>White</b>	<b>Native American</b>	<b>Black</b>
MC 2	608	4.9%	90.9%	4.2%	90.1%	0.0%
MC 4	978	1.3%	99.1%	0.4%	97.2%	0.0%
MC 5	1,434	1.5%	92.0%	3.5%	91.1%	0.0%
MC 6	2,146	0.6%	99.5%	0.4%	98.5%	0.0%
MC 20	1,684	4.2%	92.2%	4.3%	89.7%	0.2%
MC 21	1,636	46.2%	46.1%	11.9%	39.1%	0.7%
MC 31	1,418	22.6%	54.1%	23.1%	49.0%	1.5%
MC 33	2,294	40.8%	50.0%	11.4%	44.6%	1.6%
MC 34	743	50.6%	44.3%	8.6%	36.3%	1.7%
MC 35	1,278	34.2%	54.5%	12.1%	49.9%	1.5%
MC 36	485	17.9%	72.4%	14.1%	66.3%	0.6%
MC 37	325	63.2%	25.2%	12.8%	19.0%	0.4%
MC 38	930	55.9%	39.0%	7.9%	33.3%	1.5%
MC 39	920	21.8%	38.1%	37.5%	34.2%	1.2%
MC 41	1,316	45.0%	42.3%	15.4%	35.7%	1.1%
MC 42	349	22.9%	20.9%	53.5%	16.7%	1.9%
MC 49	1,466	25.9%	30.7%	42.4%	27.0%	0.5%
MC 59	478	25.1%	30.1%	44.3%	25.3%	1.4%
SJ 1	1,682	0.8%	98.8%	0.6%	97.3%	0.2%
SJ 2	2,083	0.6%	95.9%	3.2%	94.3%	0.1%
SJ 3	1,407	0.5%	99.2%	0.7%	97.9%	0.0%
SJ 4	2,762	1.7%	96.9%	2.0%	94.3%	0.3%
SJ 5	3,304	0.7%	98.9%	0.7%	97.9%	0.0%
SJ 6	552	0.0%	99.0%	1.0%	99.0%	0.0%
SJ 7	611	0.2%	97.9%	1.7%	97.7%	0.2%
SJ 8	1,927	0.7%	99.0%	0.4%	98.5%	0.0%
SJ 12	755	0.8%	99.0%	0.6%	98.1%	0.0%
SJ 13	1,409	1.5%	99.1%	0.3%	97.4%	0.1%
SJ 17	298	0.4%	99.6%	0.0%	99.6%	0.0%
SJ 18	1,777	2.3%	98.2%	1.1%	96.0%	0.1%
SJ 20	2,664	2.6%	98.4%	1.2%	95.2%	0.1%
SJ 22	2,677	10.9%	67.3%	22.5%	64.0%	0.2%

**District: 3**

<b>District: 3</b>				<b>Adult Non-Hispanic</b>		
<b>County/ Precinct</b>	<b>Total Population</b>	<b>Adult Hispanic</b>	<b>Total Adult Native American</b>	<b>White</b>	<b>Native American</b>	<b>Black</b>
SJ 23	1,846	8.6%	46.5%	44.5%	43.8%	0.2%
SJ 24	994	9.4%	27.1%	62.9%	25.4%	0.4%
SJ 25	1,169	10.0%	28.6%	61.3%	26.5%	1.1%
<b>District Totals</b>	<b>48,405</b>	<b>12.4%</b>	<b>75.7%</b>	<b>12.5%</b>	<b>72.9%</b>	<b>0.4%</b>