

stats in brief

2006



**Statistics  
South Africa**

Preferred supplier of quality statistics



**Statistics South Africa  
Private Bag X44  
Pretoria 0001  
South Africa**

**170 Andries Street  
Pretoria 0002**

**User Information Services:(012) 310 8600**

**Fax:(012) 310 8500**

**Printing and Distribution:(012) 310 8044**

**(012) 310 8161**

**Fax:(012) 321 7381**

**Email: [distribution@statssa.gov.za](mailto:distribution@statssa.gov.za)**

**Website: [www.statssa.gov.za](http://www.statssa.gov.za)**



# Stats in brief, 2006

**Pali Lehohla**  
Statistician-General

**Statistics South Africa**  
2006

Published by Statistics South Africa  
Private Bag X44  
Pretoria  
0001

ISBN 0-621-36558-0

© Statistics South Africa, 2006

Data from this publication may be reproduced, applied or processed, provided Statistics South Africa (Stats SA) is acknowledged as the original source of the data; that it is specified that the application and/or analysis is the result of the user's independent processing of the data; and that neither the basic data nor any reprocessed version or application thereof may be sold or offered for sale in any form whatsoever without the prior permission of Stats SA.

*Stats in Brief* presents data sourced from a range of Statistics South Africa's (Stats SA) publications.

The 2006 edition of this publication is based on information collected and published by Stats SA as at the end of June 2006. Data that had not been released prior to this date is not included in this publication. No external sources were used in the compilation of this edition.

In addition, we have replaced Census 2001 figures with the latest figures on mid-year population estimates, LFS and GHS figures available at the time of publication. Figures on the *Causes of Death* report have been incorporated to be part of vital statistics.

The feedback we receive from you as users of this booklet is vital in ensuring that we continue to provide appropriate data that meet your expectations. We rely on your feedback to ensure that we continue to provide data that not only fulfil your needs, but is also presented in a concise and usable manner.

## Abbreviations and symbols

GHS	= General Household Survey
LFS	= Labour Force Survey
n/a	= not applicable
n.e.c.	= not elsewhere classified
RDP	= Reconstruction and Development Programmes
SA	= South Africa(n)
..	= Data not available
-	= No response from respondents
0 or 0,0	= Figure too small to publish
*	= Revised
★	= For all values of 10 000 or lower the sample size is too small for reliable estimates.

## Rounding

Figures are rounded off independently of one another; details, therefore, may not add to totals because of rounding.



1.	Geography	1
2.	Demography	7
3.	Vital statistics	15
4.	Tourism	27
5.	Documented migration	35
6.	Labour statistics	41
7.	Prices	63
8.	Mining	73
9.	Manufacturing	79
10.	Construction	85
11.	Energy	91
12.	Transport	97
13.	Financial statistics: Private enterprises operating in the formal non-agriculture business sector	101
14.	Selected internal trade activities	111
15.	Social services and housing	119
16.	Debts	152
17.	National accounts	156
18.	Government finances	161

# South Africa





Geography:

1



# 1

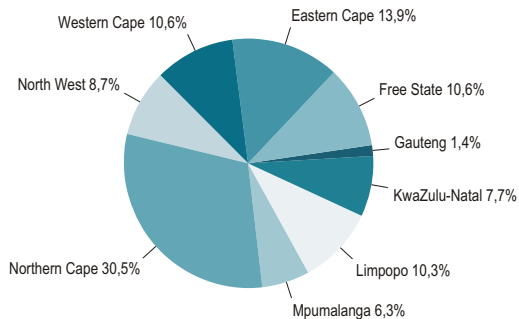
## Geography:

- |     |  |   |
|-----|--|---|
| 1.1 | Area of each province in square kilometres     | 3 |
| 1.2 | Area by province in South Africa (percentages) | 4 |

## 1.1 Area of each province in square kilometres

Eastern Cape	Free State	Gauteng	KwaZulu-Natal	Limpopo	Mpumalanga	Northern Cape	North West	Western Cape	South Africa
168 966	129 825	16 548	94 361	125 755	76 495	372 889	106 512	129 462	<b>1 220 813</b>

## 1.2 Area of each province in square kilometres







Demography:

2

# 2

## Demography:

- |     |   |    |
|-----|---|----|
| 2.1 | Mid-year population estimates of South Africa by population group, age group and gender, 2005 (hundreds)  | 9  |
| 2.2 | Provincial mid-year population estimates of South Africa by age group and gender, 2005 (hundreds)         | 11 |
| 2.3 | Mid-year population estimates of South Africa by population group and gender, 2005                        | 12 |
| 2.4 | Percentage distribution of the projected provincial share of the total South Africa population, 2001-2005 | 12 |
| 2.5 | Estimated annual population growth rates of South Africa, 2001-2005                                       | 13 |



## 2.1 Mid-year population estimates of South Africa by population group, age group and gender, 2005 (hundreds)

	Black African			Coloured			Indian or Asian			White			Total		
	Male	Female	Total	Male	Female	Total	Male	Female	Total	Male	Female	Total	Male	Female	Total
0-4	21 842	21 625	43 467	2 038	2 000	4 038	443	433	876	1 144	1 114	2 258	25 467	25 172	50 639
5-9	21 361	21 248	42 609	2 041	2 009	4 050	485	477	962	1 362	1 328	2 690	25 249	25 062	50 311
10-14	21 372	21 349	42 721	2 023	2 003	4 026	523	519	1 042	1 622	1 582	3 204	25 540	25 453	50 993
15-19	20 396	20 400	40 796	1 909	1 905	3 814	537	539	1 076	1 667	1 628	3 295	24 509	24 472	48 981
20-24	19 385	18 920	38 305	1 874	1 876	3 750	540	539	1 079	1 547	1 531	3 078	23 346	22 866	46 212
25-29	17 802	16 966	34 768	1 924	1 927	3 851	497	501	998	1 260	1 234	2 494	21 483	20 628	42 111
30-34	15 385	15 227	30 612	1 877	1 909	3 786	439	447	886	1 181	1 155	2 336	18 882	18 738	37 620
35-39	10 091	10 563	20 654	1 552	1 624	3 176	410	421	831	1 586	1 555	3 141	13 639	14 163	27 802
40-44	8 445	9 374	17 819	1 346	1 438	2 784	379	397	776	1 724	1 729	3 453	11 894	12 938	24 832
45-49	7 128	8 222	15 350	1 090	1 186	2 276	342	363	705	1 737	1 804	3 541	10 297	11 575	21 872
50-54	5 527	6 512	12 039	820	915	1 735	300	328	628	1 557	1 612	3 169	8 204	9 367	17 571
55-59	4 220	5 164	9 384	594	698	1 292	244	278	522	1 457	1 567	3 024	6 515	7 707	14 222
60-64	3 786	4 534	8 320	479	552	1 031	199	227	426	1 291	1 374	2 665	5 755	6 687	12 442
65-69	2 821	3 582	6 403	359	449	808	142	173	315	958	1 075	2 033	4 280	5 279	9 559
70-74	1 868	2 498	4 366	232	313	545	88	116	204	633	797	1 430	2 821	3 724	6 545
70-79	1 048	1 476	2 524	123	177	300	49	73	122	399	578	977	1 619	2 304	3 923
80+	727	1 193	1 920	86	140	226	34	57	91	356	654	1 010	1 203	2 044	3 247
<b>Total</b>	<b>183 204</b>	<b>188 853</b>	<b>372 057</b>	<b>20 367</b>	<b>21 121</b>	<b>41 488</b>	<b>5 651</b>	<b>5 888</b>	<b>11 539</b>	<b>21 481</b>	<b>22 317</b>	<b>43 798</b>	<b>230 703</b>	<b>238 179</b>	<b>468 882</b>

## 2.2 Provincial mid-year population estimates of South Africa by age group and gender, 2005 (hundreds)

	Eastern Cape			Free State			Gauteng			KwaZulu-Natal			Limpopo		
	Male	Female	Total	Male	Female	Total	Male	Female	Total	Male	Female	Total	Male	Female	Total
0-4	3 894	3 860	7 754	1 490	1 476	2 966	4 507	4 424	8 931	5 475	5 421	10 896	3 374	3 350	6 724
5-9	4 077	4 009	8 086	1 521	1 509	3 030	3 860	3 835	7 695	5 585	5 540	11 125	3 554	3 562	7 116
10-14	4 601	4 548	9 149	1 550	1 538	3 088	3 429	3 424	6 853	5 702	5 672	11 374	3 850	3 862	7 712
15-19	4 354	4 301	8 655	1 565	1 540	3 105	3 433	3 470	6 903	5 381	5 362	10 743	3 589	3 582	7 171
20-24	3 424	3 421	6 845	1 474	1 435	2 909	4 588	4 224	8 812	4 983	4 964	9 947	2 772	2 879	5 651
25-29	2 525	2 618	5 143	1 299	1 284	2 583	5 583	4 697	10 280	4 276	4 257	8 533	2 012	2 318	4 330
30-34	2 007	2 288	4 295	1 157	1 193	2 350	5 290	4 411	9 701	3 591	3 738	7 329	1 549	2 005	3 554
35-39	1 461	1 814	3 275	900	945	1 845	3 712	3 224	6 936	2 428	2 744	5 172	1 096	1 475	2 571
40-44	1 343	1 771	3 114	810	858	1 668	3 091	2 847	5 938	2 086	2 528	4 614	950	1 355	2 305
45-49	1 266	1 726	2 992	714	765	1 479	2 592	2 513	5 105	1 784	2 223	4 007	817	1 182	1 999
50-54	1 063	1 426	2 489	579	636	1 215	1 958	1 954	3 912	1 469	1 808	3 277	689	994	1 683
55-59	881	1 199	2 080	454	521	975	1 476	1 527	3 003	1 218	1 564	2 782	569	810	1 379
60-64	857	1 138	1 995	397	441	838	1 208	1 236	2 444	1 051	1 337	2 388	521	710	1 231
65-69	757	1 077	1 834	281	331	612	790	823	1 613	761	1 050	1 811	426	642	1 068
70-74	545	757	1 302	189	244	433	470	530	1 000	479	731	1 210	301	522	823
70-79	316	455	771	99	133	232	254	315	569	277	466	743	199	355	554
80+	227	387	614	73	130	203	190	295	485	195	365	560	164	315	479
<b>Total</b>	<b>33 598</b>	<b>36 795</b>	<b>70 393</b>	<b>14 552</b>	<b>14 979</b>	<b>29 531</b>	<b>46 431</b>	<b>43 749</b>	<b>90 180</b>	<b>46 741</b>	<b>49 770</b>	<b>96 511</b>	<b>26 432</b>	<b>29 918</b>	<b>56 350</b>

## 2.2 Mid-year population estimates of South Africa by population group, age group and gender, 2005 (hundreds) (cont.)

	Mpumalanga			Northern Cape			North West			Western Cape			South Africa		
	Male	Female	Total	Male	Female	Total	Male	Female	Total	Male	Female	Total	Male	Female	Total
0-4	1 852	1 838	3 690	476	469	945	2 119	2 106	4 225	2 281	2 228	4 509	25 468	25 172	50 640
5-9	1 908	1 917	3 825	485	480	965	2 023	2 024	4 047	2 236	2 186	4 422	25 249	25 062	50 311
10-14	1 866	1 883	3 749	457	457	914	1 998	1 996	3 994	2 087	2 073	4 160	25 540	25 453	50 993
15-19	1 785	1 777	3 562	429	427	856	1 910	1 913	3 823	2 063	2 099	4 162	24 509	24 471	48 980
20-24	1 634	1 594	3 228	405	379	784	1 804	1 726	3 530	2 260	2 244	4 504	23 344	22 866	46 210
25-29	1 421	1 394	2 815	383	352	735	1 747	1 585	3 332	2 238	2 123	4 361	21 484	20 628	42 112
30-34	1 228	1 272	2 500	359	339	698	1 598	1 488	3 086	2 105	2 004	4 109	18 884	18 738	37 622
35-39	888	946	1 834	284	280	564	1 256	1 135	2 391	1 613	1 602	3 215	13 638	14 165	27 803
40-44	790	838	1 628	253	259	512	1 161	1 027	2 188	1 410	1 456	2 866	11 894	12 939	24 833
45-49	672	705	1 377	230	244	474	1 027	914	1 941	1 194	1 303	2 497	10 296	11 575	21 871
50-54	539	573	1 112	194	208	402	771	737	1 508	942	1 030	1 972	8 204	9 366	17 570
55-59	404	445	849	157	175	332	588	596	1 184	767	870	1 637	6 514	7 707	14 221
60-64	343	371	714	147	157	304	536	546	1 082	697	751	1 448	5 757	6 687	12 444
65-69	245	296	541	110	114	224	377	401	778	531	544	1 075	4 278	5 278	9 556
70-74	152	202	354	75	80	155	250	283	533	360	374	734	2 821	3 723	6 544
70-79	96	132	228	39	45	84	142	173	315	197	229	426	1 619	2 303	3 922
80+	78	115	193	30	45	75	108	174	282	139	220	359	1 204	2 046	3 250
<b>Total</b>	<b>15 901</b>	<b>16 298</b>	<b>32 199</b>	<b>4 513</b>	<b>4 510</b>	<b>9 023</b>	<b>19 415</b>	<b>18 824</b>	<b>38 239</b>	<b>23 120</b>	<b>23 336</b>	<b>46 456</b>	<b>230 703</b>	<b>238 179</b>	<b>468 882</b>

### 2.3 Mid-year population estimates of South Africa by population group and gender, 2005

	Male		Female		Total	
	Number	% of total population	Number	% of total population	Number	% of total population
Black African	183 204	79,4	188 853	79,3	372 057	79,3
Coloured	20 367	8,8	21 121	8,9	41 488	8,8
Indian or Asian	5 651	2,4	5 888	2,5	11 539	2,5
White	21 481	9,3	22 317	9,4	43 798	9,3
<b>Total</b>	<b>230 703</b>	<b>100,0</b>	<b>238 179</b>	<b>100,0</b>	<b>468 882</b>	<b>100,0</b>

Source: Stats SA, *Mid-year population estimates, South Africa, 2005* (Statistical release P0302)

### 2.4 Percentage distribution of the projected provincial share of the total South Africa population, 2001-2005

Province	2001	2002	2003	2004	2005
Eastern Cape	15,5	15,4	15,3	15,1	15,0
Free State	6,5	6,4	6,4	6,3	6,3
Gauteng	18,5	18,7	18,9	19,0	19,2
KwaZulu-Natal	20,7	20,7	20,7	20,6	20,6
Limpopo	12,3	12,2	12,1	12,1	12,0
Mpumalanga	6,9	6,9	6,9	6,9	6,9
Northern Cape	1,9	1,9	1,9	1,9	1,9
North West	8,2	8,2	8,2	8,2	8,2
Western Cape	9,4	9,5	9,7	9,8	9,9
<b>Total</b>	<b>100,0</b>	<b>100,0</b>	<b>100,0</b>	<b>100,0</b>	<b>100,0</b>

Source: Stats SA, *Mid-year population estimates, South Africa, 2005* (Statistical release P0302)

## 2.5 Estimated annual population growth rates of South Africa, 2001-2005

		2001-2002	2002-2003	2003-2004	2004-2005
Black African	Male	1,39	1,29	1,21	1,11
	Female	1,38	1,26	1,15	1,03
	<b>Total</b>	<b>1,38</b>	<b>1,28</b>	<b>1,18</b>	<b>1,07</b>
Coloured	Male	1,25	1,17	1,09	1,01
	Female	1,26	1,18	1,10	1,02
	<b>Total</b>	<b>1,25</b>	<b>1,18</b>	<b>1,09</b>	<b>1,01</b>
Indian or Asian	Male	0,84	0,80	0,77	0,77
	Female	0,91	0,87	0,83	0,82
	<b>Total</b>	<b>0,88</b>	<b>0,83</b>	<b>0,80</b>	<b>0,80</b>
White	Male	-1,32	-1,09	-0,84	-0,49
	Female	-1,15	-0,92	-0,67	-0,33
	<b>Total</b>	<b>-1,23</b>	<b>-1,01</b>	<b>-0,75</b>	<b>-0,41</b>
<b>Total</b>	<b>Male</b>	<b>1,10</b>	<b>1,04</b>	<b>0,99</b>	<b>0,94</b>
	<b>Female</b>	<b>1,10</b>	<b>1,03</b>	<b>0,96</b>	<b>0,90</b>
	<b>Total</b>	<b>1,10</b>	<b>1,03</b>	<b>0,98</b>	<b>0,92</b>



Vital statistics:

3

# 3

## Vital statistics:

3.1	Number of recorded marriages by province, 1999-2003 (numbers)	17
3.2	Number of recorded divorces by province, 1999-2003 (numbers)	18
3.3	Number of minor children involved in recorded divorces by population group, 1999-2003	19
3.4	Registered live births by province, 1999-2003 (thousands)	20
3.5	Number of deaths by province and year of death, 1998-2002	21
3.6	Percentage distribution of registered deaths by age and year of death, 1998-2003	22
3.7	Main groups of the underlying causes of death, 1999-2003	23
3.8	Leading underlying natural causes of death, 1999-2003	24



## 3.1 Number of recorded marriages by province, 1999-2003 (numbers)

Year	Eastern Cape	Free State	Gauteng	KwaZulu-Natal	Limpopo	Mpumalanga	Northern Cape	North West	Western Cape	Unspecified	Foreign	South Africa
1999	18 676	12 732	36 000	12 991	14 707	7 524	3 201	9 615	21 951	2 990	71	<b>140 458</b>
2000	13 180	11 591	37 036	20 327	10 373	8 316	3 356	10 359	23 524	5 205	124	<b>143 391</b>
2001	12 908	10 790	35 528	19 646	12 003	7 995	3 283	9 377	22 767	3 138	60	<b>134 581</b>
2002	19 278	13 359	45 400	24 272	14 970	10 139	3 790	13 483	26 852	5 214	245	<b>177 002</b>
2003	19 980	13 150	45 787	26 683	12 649	10 508	4 004	14 395	25 704	5 478	351	<b>178 689</b>

Source: Stats SA, *Marriages and divorces* (Report 03-07-01)

Recorded marriages of all population groups are included. Certain types of marriages, for example, traditional and Muslim, were not officially recognised until 1999. These types of marriages are thus reflected in the figures from 2000 onwards.

## 3.2 Number of recorded divorces by province, 1999-2003 (numbers)

Year	Eastern Cape	Free State	Gauteng	KwaZulu-Natal	Limpopo	Mpumalanga	Northern Cape	North West	Western Cape	Unspecified	Foreign	South Africa
1999	3 317	1 929	14 005	4 741	1 027	1 132	843	1 574	7 143	1 580	15	37 098
2000	2 519	1 737	13 289	4 664	918	961	667	1 728	5 596	2 064	0	34 145
2001	2 733	1 661	12 545	4 796	1 035	1 221	611	1 815	5 840	2 787	13	32 257
2002	1 761	1 063	11 666	3 515	1 149	1 255	536	2 065	5 846	1 968	14	30 838
2003	2 555	1 808	10 885	4 090	1 031	1 108	622	1 840	5 549	2 065	13	31 566

Source: Stats SA, *Marriages and divorces* (Report 03-07-01)

All population groups are included.

## 3.3 Number of minor children involved in recorded divorces by population group, 1999-2003

Year	Black African	Coloured	Indian or Asian	White	Mixed	Unspecified	Total
1999	9 134	5 946	2 805	15 579	353	11 513	<b>45 330</b>
2000	9 627	4 589	2 237	15 500	416	6 464	<b>38 833</b>
2001	9 640	5 377	1 951	14 854	420	5 561	<b>37 803</b>
2002	8 578	4 868	1 794	14 031	342	4 787	<b>34 400</b>
2003	8 882	5 069	1 702	11 986	435	5 350	<b>33 424</b>

Source: Stats SA, *Marriages and divorces* (Report 03-07-01)

Figures include minor children of all population groups as recorded in the law courts. The age of a minor child is defined as 0-16 years.

## 3.4 Registered live births by province, 1999-2003 (thousands)

Year	Eastern Cape	Free State	Gauteng	KwaZulu-Natal	Limpopo	Mpumalanga	Northern Cape	North West	Western Cape	Foreign	Unspecified	South Africa
1999	204	63	185	312	269	97	18	112	81	23	-	1 364
2000	219	70	192	348	217	108	19	122	98	15	-	1 408
2001	246	69	203	395	178	107	19	102	103	11	-	1 433
2002	288	66	204	395	215	114	21	105	102	8	-	1 518
2003	337	100	219	401	230	139	24	125	95	7	84	1 677

Source: Stats SA, *Recorded live births* (Statistical release P0305)

The total number of birth registrations for any given year comprises both current registrations (for births registered in the year of birth) and late registrations (for births registered later than the year of birth). Many births are not registered in the year in which they occur; instead the pattern is to register some births only before school-going age, although this is improving.

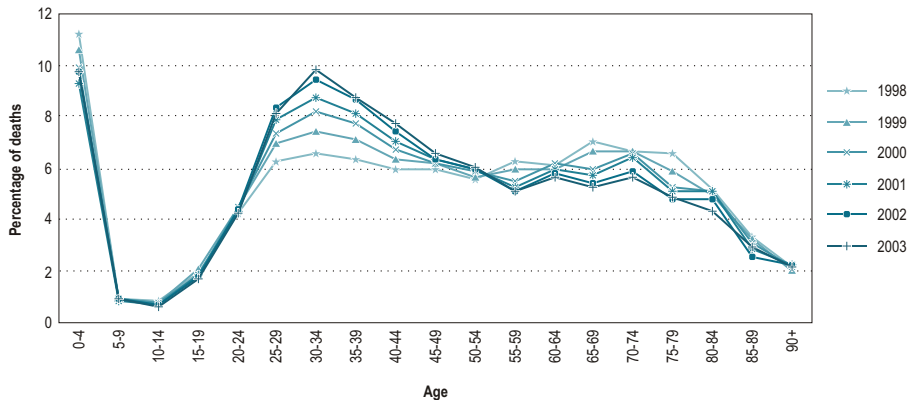
## 3.5 Number of deaths by province and year of death, 1998-2002

	1998	1999	2000	2001	2002
Eastern Cape	50 918	53 851	60 602	65 719	73 072
Free State	30 142	31 625	34 101	36 877	40 715
Gauteng	75 993	75 445	80 425	86 213	95 186
KwaZulu-Natal	83 048	86 156	95 353	105 256	116 982
Limpopo	28 302	29 135	31 263	34 901	38 639
Mpumalanga	23 926	25 899	28 273	31 548	35 277
Northern Cape	9 441	9 187	9 847	10 421	11 267
North West	29 458	32 395	35 437	39 723	44 269
Western Cape	36 347	38 088	38 540	41 042	43 667
Outside SA	112	120	128	234	193
Unspecified	2	1	-	2	1
<b>South Africa</b>	<b>367 689</b>	<b>381 902</b>	<b>413 969</b>	<b>451 936</b>	<b>499 268</b>

Source: Stats SA, *Mortality and causes of death in South Africa, 1998-2003: Findings from death notification* (Statistical release P0309.3)

The completeness of the death register varies by year and province of death. Numbers for 2003 are excluded as Stats SA had not yet received all the death notification forms for 2003 from the Department of Home Affairs at the time of publication. Deaths are reported for the province in which the death took place, not for the usual province of residence.

## 3.6 Percentage distribution of registered deaths by age and year of death, 1998-2003



Source: Stats SA, *Mortality and causes of death in South Africa, 1998-2003: Findings from death notification* (Statistical release P0309.3)

Percentages refer to number of deaths in each age group expressed in terms of the total number of deaths for that year.

## 3.7 Main groups of the underlying causes of death, 1999-2003

Main causes of death (Based on the <i>Tenth Revision, International Classification of Disease, 1992</i> )	1999 %	2000 %	2001 %	2002 %	2003 <sup>1</sup> %
Diseases of the circulatory system (I00-I99)	17,3	17,0	16,1	15,3	15,1
External causes of morbidity and mortality (V01-Y98)	13,9	12,0	11,1	10,2	9,2
Certain infectious diseases & parasitic diseases (A00-B99)	16,8	18,9	19,9	21,5	22,0
Symptoms, signs etc. nec. (R00-R99)	12,4	12,3	12,4	12,6	12,5
Diseases of the respiratory system (J00-J99)	10,1	10,9	12,3	12,6	13,6
Neoplasms (C00-D48)	8,0	7,4	6,9	6,5	6,2
Certain conditions originating in the perinatal period (P00-P99)	6,2	5,6	5,2	5,7	5,7
Endocrine, nutritional and metabolic diseases (E00-E90)	4,7	4,7	4,6	4,5	4,4
Diseases of the digestive system (K00-K93)	2,7	2,8	2,9	2,7	2,7
Diseases of the blood & immune mechanism (D50-D89)	2,8	3,2	3,2	3,2	3,3
Diseases of the nervous system (G00-G99)	2,1	2,3	2,3	2,3	2,5
Diseases of the genito-urinary system (N00-N99)	1,3	1,4	1,4	1,4	1,4
Congenital malformations (Q00-Q99)	0,4	0,4	0,4	0,4	0,3
Mental and behavioural diseases (F00-F99)	0,4	0,4	0,4	0,4	0,4
Diseases of the eye and adnexa (H00-H59)	0,0	0,0	0,0	0,0	0,0
Diseases of the ear and mastoid process (H60-H95)	0,0	0,0	0,0	0,0	0,0
Diseases of the musculoskeletal system etc. (M00-M99)	0,4	0,3	0,4	0,4	0,3
Diseases of the skin and subcutaneous tissue (L00-L99)	0,3	0,3	0,3	0,3	0,3
Pregnancy, childbirth and the puerperium (O00-O99)	0,2	0,2	0,2	0,2	0,2
<b>Total</b>	<b>100,0</b>	<b>100,0</b>	<b>100,0</b>	<b>100,0</b>	<b>100,0</b>
<b>Numbers</b>	<b>381 902</b>	<b>413 969</b>	<b>451 936</b>	<b>499 268</b>	<b>454 603</b>

Source: Stats SA, *Mortality and causes of death in South Africa, 1999-2003: Findings from death notification* (Statistical release P0309.3)

<sup>1</sup>Information for 2003 is based only on the 454 603 valid forms received and is therefore incomplete.

Diseases of the circulatory system seem to be linked to the highest percentage of deaths in 1999, while the highest percentage of deaths were those associated with certain infectious and parasitic diseases in 2000-2003.

## 3.8 Leading underlying natural causes of death, 1999-2003

Causes of death (Based on the <i>Tenth Revision, International Classification of Disease, 1992</i> )	1999	2000	2001	2002	2003 <sup>1</sup>
	%	%	%	%	%
Tuberculosis (A15-A19)	8,9	10,2	11,3	12,0	12,1
Other forms of heart disease (I30-I52)	5,3	5,2	5,0	4,5	4,4
Cerebrovascular diseases (I60-I69)	5,2	5,3	5,0	5,0	5,0
Influenza and pneumonia (J10-J18)	5,0	5,9	7,0	7,5	8,3
Diabetes mellitus (E10-E14)	3,3	3,3	3,2	3,1	3,1
Chronic lower respiratory diseases (J40-J47)	3,3	3,2	3,2	3,0	3,0
Ischaemic heart diseases (I20-I25)	3,0	2,8	2,6	2,5	2,5
Malignant neoplasms of digestive organs (C15-C26)	2,5 <sup>2</sup>	2,2 <sup>2</sup>	2,1 <sup>2</sup>	1,9 <sup>2</sup>	1,7 <sup>2</sup>
Hypertensive diseases (I10-I15)	2,5	2,5 <sup>2</sup>	2,4	2,2 <sup>2</sup>	2,2 <sup>2</sup>
Respiratory and cardiovascular disorders - perinatal (P20-P29)	2,1 <sup>2</sup>	2,2 <sup>2</sup>	2,1 <sup>2</sup>	2,3	2,3
Intestinal infectious diseases (A00-A09)	2,9	3,4	3,6	4,0	4,4
Human immunodeficiency virus [HIV] diseases (B20-B24)	2,6	2,5	2,0 <sup>2</sup>	2,1 <sup>2</sup>	2,1 <sup>2</sup>
Certain disorders involving the immune mechanism (D80-D89)	2,2 <sup>2</sup>	2,6	2,6	2,5	2,7
Other causes	51,2	48,7	48,0	47,4	46,3
<b>Total</b>	<b>100,0</b>	<b>100,0</b>	<b>100,0</b>	<b>100,0</b>	<b>100,0</b>
<b>Numbers</b>	<b>381 902</b>	<b>413 969</b>	<b>451 936</b>	<b>499 268</b>	<b>454 603</b>

Source: Stats SA, *Mortality and causes of death in South Africa, 1999-2003: Findings from death notification* (Statistical release P0309.3)

<sup>1</sup> Information for 2003 is based only on the 454 603 valid forms received and is therefore incomplete.

<sup>2</sup> Not in the top ten whereby ranking is based on frequency and excludes symptoms, signs and abnormal clinical and laboratory findings, not elsewhere classified.

The dominant contributors to the growth in mortality were deaths associated with tuberculosis, other forms of heart disease, cerebrovascular diseases and influenza and pneumonia.







Tourism:

4

# 4

## Tourism:

4.1	Arrivals and departures of foreign travellers and SA residents, 2001-2005 (thousands)	29
4.2	Arrivals and departures of foreign travellers, 2001-2005 (thousands)	30
4.3	Arrivals and departures of South African residents, 1999-2003 (thousands)	31
4.4	Arrivals of foreign travellers by mode of travel, 1999 against 2005 (thousands)	32
4.5	Purpose of visit stated by foreign travellers, 2001-2005 (thousands)	33

## 4.1 Arrivals and departures of foreign travellers and SA residents, 2001-2005 (thousands)

Year	Arrivals <sup>1</sup>			Departures <sup>1</sup>		
	Foreign travellers <sup>2</sup>	SA residents <sup>3</sup>	Total	Foreign travellers <sup>2</sup>	SA residents <sup>3</sup>	Total
2001	5 908	3 802	9 710	5 307	3 733	9 040
2002	6 550	3 850	10 400	5 822	3 794	9 616
2003 <sup>4</sup>	6 640	1 254	7 894	5 955	1 164	7 119
2004	6 815	-	6 815	6 093	-	6 093
2005	7 518	-	7 518	6 728	-	6 728

Source: Stats SA, *Tourism 2001-2003* (Report 03-51-02) and *Tourism and migration* (Statistical release P0351)

<sup>1</sup> All people entering or leaving South Africa through legal ports of entry.

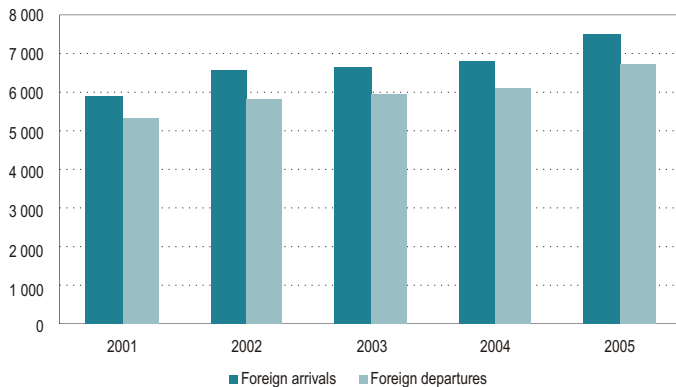
<sup>2</sup> Persons residing outside South Africa, who visit this country temporarily for business, holiday and/or study purposes, as well as for work (more than 90 days).

<sup>3</sup> South African citizens and persons with permanent residence in South Africa, who leave the country temporarily.

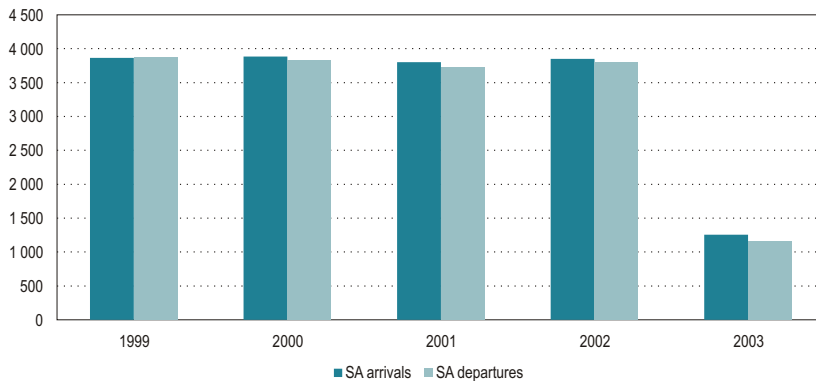
<sup>4</sup> As from April 2003, statistics have not been collected on arrivals or departures of South African residents in terms of the Immigration Act, 2002 (Act No. 13 of 2002).

About two-thirds of the people coming into the country are foreign travellers and about one-third are South African residents

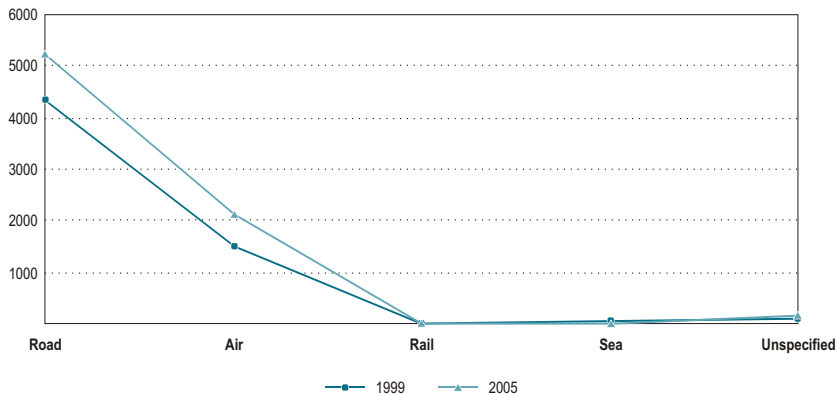
#### 4.2 Arrivals and departures of foreign travellers, 2001-2005 (thousands)



### 4.3 Arrivals and departures of South African residents, 1999-2003 (thousands)



#### 4.4 Arrivals of foreign travellers by mode of travel, 1999 against 2005 (thousands)



Source: Stats SA, *Tourism 1999-2003* (Report 03-51-02) and *Tourism and migration* (Statistical release P0351)

Foreign visitors entering the country using road and rail transport do so through the South African borders with neighbouring countries - Lesotho, Namibia, Botswana, Zimbabwe, Mozambique and Swaziland.

Ports of entry for air travel are mainly through the international airports at Cape Town, Durban and Johannesburg. Ports of entry for sea travel are mainly Cape Town, Durban, East London and Port Elizabeth.



**4.5 Purpose of visit stated by foreign travellers, 2001-2005 (thousands)**

<b>Purpose of visit</b>	<b>2001</b>	<b>2002</b>	<b>2003</b>	<b>2004</b>	<b>2005</b>
Holiday	4 962	5 596	5 853	6 091	6811
Business	479	446	283	224	201
Transit	130	133	85	63	55
Border traffic	136	157	156	168	164
Work	62	58	72	83	94
Contract work	58	62	63	54	54
Study	77	94	123	137	133
Unspecified	4	4	5	5	2
<b>Total</b>	<b>5 908</b>	<b>6 550</b>	<b>6 640</b>	<b>6 815</b>	<b>7518</b>



Documented migration:

5



# 5

## Documented migration:

- 5.1 Documented immigrants and self-declared emigrants by region of previous permanent residence or destination, 2001-2005 (numbers) 37
- 5.2 Documented immigrants and self-declared emigrants by occupation group, 2001-2005 (numbers) 38

### 5.1 Documented immigrants and self-declared emigrants by region of previous permanent residence or destination, 2001-2005 (numbers)

	Europe	Australasia	Middle East	Asia	North America	Central and South America	Africa	Indian Ocean Islands	Unspecified	Total
<b>Documented immigrants</b>										
2001	1 714	51	109	1 289	172	41	1 419	31	6	4 832
2002	1 847	65	103	1 738	184	60	2 472	61	15	6 545
2003	2 567	99	190	2 328	272	82	4 961	58	21	10 578
2004	2 638	85	149	2 225	269	74	5 235	26	13	10 714
2005 <sup>1</sup>	1 059	41	100	1 784	96	47	2 493	26	4	5 650
<b>Self-declared emigrants</b>										
2001	5 316	2 912	280	226	1 659	54	1 584	126	103	12 260
2002	4 637	2 523	323	218	1 430	43	1 461	144	111	10 890
2003	6 827	3 248	580	445	1 998	92	2 611	196	168	16 165
2004 <sup>2</sup>	353	117	6	9	89	1	42	15	10	642

Sources: Stats SA, *Documented migration* (Report 03-51-03) and *Tourism and migration* (Statistical release P0351)

<sup>1</sup> Statistics of documented immigrants for 2005 are from January to June, those for July to December are unavailable.

<sup>2</sup> As from February 2004, statistics on self-declared emigrants were no longer collected due to the Immigration Act, 2002 (Act No. 13 of 2002).

Emigration in this context refers to South Africans leaving the country permanently. These figures are obtained from South Africa's three international airports, Johannesburg, Cape Town and Durban. The immigration figures are obtained from all legal ports of entry into South Africa. The four most frequent destinations for self-declared emigrants are Europe, North America, Australasia and Africa.

## 5.2 Documented immigrants and self-declared emigrants by occupation group, 2001-2005 (numbers)

Occupation	2001	2002	2003	2004 <sup>1</sup>	2005 <sup>2</sup>
<b>Documented immigrants</b>					
Professional	524	576	499	436	159
Managerial and administrative	258	382	416	484	229
Clerical and sales occupations	62	26	15	13	149
Transport and communications occupations	3	5	25	5	2
Service occupations	16	21	7	19	12
Farming and related occupations	-	2	15	2	-
Artisan and related occupations	11	14	10	13	5
Production and related workers	10	9	-	3	19
Occupation unspecified and n.e.c.	69	19	39	83	25
Not economically active	3 879	5 491	9 567	9 368	5050
<b>Total</b>	<b>4 832</b>	<b>6 545</b>	<b>10 578</b>	<b>10 714</b>	<b>5650</b>

Source: Stats SA, *Documented migration* (Report 03-51-03) and *Tourism and migration* (Statistical release P0351)

<sup>1</sup> As from February 2004, statistics on self-declared emigrants were no longer collected due to the Immigration Act, 2002 (Act No. 13 of 2002).

<sup>2</sup> Statistics of documented immigrants for 2005 are from January to June, those for July to December are unavailable.







Labour statistics:

6

# 6

## Labour statistics:

6.1	Population of working age (15-65 years) by gender and labour market status according to the official definition of unemployment, 2001-2005 (thousands)	43
6.2	Population of working age (15-65 years) by population group and labour market status according to the official definition of unemployment, 2001-2005 (thousands)	46
6.3	The employed (15-65 years) by main occupation and province, 2001-2005 (thousands)	49
6.4	The employed (15-65 years) by main industry and province, 2001-2005 (thousands)	54
6.5	Number of employees and gross earnings by industry, 2005	60
6.6	Average monthly earnings, at current prices, by industry, 2005	61

### 6.1 Population of working age (15-65 years) by gender and labour market status according to the official definition of unemployment, 2001-2005 (thousands)

Gender	Total	Not economically active	Economically active			
			Sub-total	Workers	Unemployed	Unemployment rate %
<b>Male</b>						
Mar '01	13 657	4 659	8 998	6 788	2 211	24,6
Sep '01	13 615	4 937	8 677	6 442	2 236	25,8
Mar '01	13 697	4 760	8 937	6 606	2 331	26,1
Sep '02	13 903	4 972	8 930	6 614	2 316	25,9
Mar '03	13 975	5 017	8 958	6 520	2 438	27,2
Sep '03	13 997	5 218	8 779	6 613	2 166	24,7
Mar '04	14 077	5 356	8 721	6 640	2 081	23,9
Sep '04	14 194	5 394	8 800	6 772	2 029	23,1
Mar '05	14 243	5 335	8 908	6 911	1 997	22,4
Sep '05	14 297	5 184	9 112	7 055	2 057	22,6

### 6.1 Population of working age (15-65 years) by gender and labour market status according to the official definition of unemployment, 2001-2005 (thousands) (cont.)

Gender	Total	Not economically active	Economically active			
			Sub-total	Workers	Unemployed	Unemployment rate %
<b>Female</b>						
Mar '01	14 435	6 747	7 687	5 485	2 202	28,6
Sep '01	14 503	7 344	7 158	4 739	2 420	33,8
Mar '02	14 634	7 057	7 577	5 011	2 566	33,9
Sep '02	14 615	7 318	7 297	4 678	2 619	35,9
Mar '03	14 778	7 319	7 459	4 782	2 677	35,9
Sep '03	14 941	7 862	7 079	4 810	2 268	32,0
Mar '04	15 045	7 963	7 082	4 752	2 330	32,9
Sep '04	15 097	8 128	6 969	4 866	2 103	30,2
Mar '05	15 263	7 988	7 276	4 991	2 285	31,4
Sep '05	15 379	7 709	7 669	5 242	2 428	31,7

### 6.1 Population of working age (15-65 years) by gender and labour market status according to the official definition of unemployment, 2001-2005 (thousands) (cont.)

Gender	Total	Not economically active	Economically active			
			Sub-total	Workers	Unemployed	Unemployment rate %
<b>Total</b>						
Mar '01	28 096	11 408	16 688	12 275	4 413	26,4
Sep '01	28 117	12 281	15 836	11 181	4 655	29,4
Mar '02	28 333	11 819	16 514	11 617	4 897	29,7
Sep '02	28 527	12 295	16 232	11 296	4 936	30,4
Mar '03	28 756	12 337	16 420	11 304	5 116	31,2
Sep '03	28 938	13 080	15 858	11 424	4 434	28,0
Mar '04	29 131	13 324	15 807	11 392	4 415	27,9
Sep '04	29 305	13 527	15 778	11 643	4 135	26,2
Mar '05	29 524	13 334	16 190	11 907	4 283	26,5
Sep '05	29 697	12 909	16 788	12 301	4 487	26,7

Sources: Stats SA, *Labour force surveys 2001-2005* (Statistical release P0210)

Totals include unspecified gender.

Statistics South Africa has updated the entire series of LFS results to reflect the new population estimates released in February 2005. In addition, all rounds of the series have now been benchmarked to Census 2001, including the early rounds that were previously benchmarked to Census '96.

The resulting estimates are now comparable for the entire series to date.

## 6.2 Population of working age (15-65 years) by population group and labour market status according to the official definition of unemployment, 2001-2005 (thousands)

Population group	Total	Not economically active	Economically active			Unemployment rate %
			Sub-total	Workers	Unemployed	
<b>Black African</b>						
Mar '01	21 475	9 192	12 283	8 466	3 817	31,1
Sep '01	21 483	10 048	11 435	7 353	4 081	35,7
Mar '02	21 651	9 638	12 014	7 787	4 227	35,2
Sep '02	21 846	10 027	11 819	7 515	4 304	36,4
Mar '03	22 132	10 155	11 976	7 507	4 470	37,3
Sep '03	22 295	10 829	11 466	7 579	3 888	33,9
Mar '04	22 496	11 026	11 470	7 550	3 921	34,2
Sep '04	22 645	11 179	11 466	7 874	3 592	31,3
Mar '05	22 860	11 026	11 834	8 089	3 745	31,6
Sep '05	23 026	10 610	12 416	8 507	3 910	31,5
<b>Coloured</b>						
Mar '01	2 565	885	1 679	1 323	356	21,2
Sep '01	2 534	911	1 623	1 279	344	21,2
Mar '02	2 577	846	1 731	1 314	417	24,1
Sep '02	2 602	923	1 679	1 294	386	23,0
Mar '03	2 610	894	1 716	1 331	385	22,4
Sep '03	2 627	965	1 661	1 311	350	21,1
Mar '04	2 653	957	1 696	1 390	306	18,0
Sep '04	2 685	1 025	1 660	1 298	362	21,8
Mar '05	2 687	993	1 693	1 359	335	19,8
Sep '05	2 682	968	1 714	1 330	385	22,4

## 6.2 Population of working age (15-65 years) by population group and labour market status according to the official definition of unemployment, 2001-2005 (thousands) (cont.)

Population group	Total	Not economically active	Economically active			
			Sub-total	Workers	Unemployed	Unemployment rate %
<b>Indian or Asian</b>						
Mar '01	790	297	492	410	82	16,7
Sep '01	838	310	528	429	99	18,8
Mar '02	839	330	509	407	102	20,1
Sep '02	836	296	540	430	110	20,4
Mar '03	850	320	530	412	119	22,4
Sep '03	831	312	519	433	86	16,6
Mar '04	836	332	504	420	83	16,5
Sep '04	823	339	484	419	65	13,4
Mar '05	839	324	516	423	93	18,0
Sep '05	834	311	523	441	82	15,8
<b>White</b>						
Mar '01	3 234	1 024	2 210	2 057	153	6,9
Sep '01	3 234	1 002	2 232	2 102	130	5,8
Mar '02	3 238	997	2 241	2 095	146	6,5
Sep '02	3 208	1 034	2 175	2 044	130	6,0
Mar '03	3 146	959	2 187	2 045	142	6,5
Sep '03	3 170	968	2 202	2 092	110	5,0
Mar '04	3 131	1 002	2 129	2 025	104	4,9
Sep '04	3 099	967	2 132	2 016	116	5,4
Mar '05	3 097	977	2 121	2 014	107	5,1
Sep '05	3 097	998	2 099	1 993	106	5,0

## 6.2 Population of working age (15-65 years) by population group and labour market status according to the official definition of unemployment, 2001-2005 (thousands) (cont.)

Population group	Total	Not economically active	Economically active			Unemployment rate %
			Sub-total	Workers	Unemployed	
<b>Total</b>						
Mar '01	28 096	11 408	16 688	12 275	4 413	26,4
Sep '01	28 117	12 281	15 836	11 181	4 655	29,4
Mar '02	28 333	11 819	16 514	11 617	4 897	29,7
Sep '02	28 527	12 295	16 232	11 296	4 936	30,4
Mar '03	28 756	12 337	16 420	11 304	5 116	31,2
Sep '03	28 938	13 080	15 858	11 424	4 434	28,0
Mar '04	29 131	13 324	15 807	11 392	4 415	27,9
Sep '04	29 305	13 527	15 778	11 643	4 135	26,2
Mar '05	29 524	13 334	16 190	11 907	4 283	26,5
Sep '05	29 697	12 909	16 788	12 301	4 487	26,7

Sources: Stats SA, *Labour force surveys 2001-2005* (Statistical release P0210)

Totals include unspecified and other population groups.



## 6.3 The employed (15-65 years) by main occupation and province, 2001-2005 (thousands)

Main occupation	Eastern Cape	Free State	Gauteng	KwaZulu-Natal	Limpopo	Mpumalanga	Northern Cape	North West	Western Cape	Total
<b>Total</b>										
Mar '01	1 401	905	3 025	2 407	939	842	266	918	1 572	<b>12 275</b>
Sep '01	1 236	875	2 825	2 006	847	727	244	858	1 564	<b>11 181</b>
Mar '02	1 622	848	2 867	1 992	851	743	246	836	1 612	<b>11 617</b>
Sep '02	1 241	810	2 904	2 108	816	739	247	860	1 571	<b>11 296</b>
Mar '03	1 350	821	2 889	2 013	782	733	241	839	1 637	<b>11 304</b>
Sep '03	1 210	815	2 985	2 099	793	777	229	862	1 652	<b>11 424</b>
Mar '04	1 123	837	3 019	2 013	802	776	236	841	1 745	<b>11 392</b>
Sep '04	1 278	777	3 070	2 092	883	789	229	835	1 691	<b>11 643</b>
Mar '05	1 398	794	3 222	2 125	793	764	226	875	1 711	<b>11 907</b>
Sep '05	1 352	797	3 441	2 178	871	778	231	928	1 726	<b>12 301</b>
<b>Legislators, senior officials and managers</b>										
Mar '01	51	44	220	104	22	26	13	28	124	<b>633</b>
Sep '01	52	49	234	125	27	23	*	28	115	<b>664</b>
Mar '02	61	45	257	139	22	28	*	24	122	<b>708</b>
Sep '02	62	40	298	124	21	36	11	29	110	<b>731</b>
Mar '03	62	47	279	114	21	30	12	30	114	<b>708</b>
Sep '03	62	49	318	137	25	43	15	34	138	<b>822</b>
Mar '04	65	40	336	117	39	36	17	31	152	<b>834</b>
Sep '04	63	43	311	172	37	53	15	49	168	<b>910</b>
Mar '05	61	36	265	155	40	33	14	50	145	<b>798</b>
Sep '05	66	41	308	142	35	41	11	40	174	<b>857</b>

## 6.3 The employed (15-65 years) by main occupation and province, 2001-2005 (thousands) (cont.)

Main occupation	Eastern Cape	Free State	Gauteng	KwaZulu-Natal	Limpopo	Mpumalanga	Northern Cape	North West	Western Cape	Total
<b>Professionals</b>										
Mar '01	42	35	162	69	29	15	*	22	82	463
Sep '01	46	32	155	89	39	16	*	22	82	486
Mar '02	46	32	165	76	28	17	*	16	93	477
Sep '02	43	37	182	60	33	19	*	24	98	502
Mar '03	49	39	206	77	37	18	*	24	95	554
Sep '03	45	33	202	83	34	20	*	27	93	544
Mar '04	35	26	212	83	35	18	*	25	95	534
Sep '04	37	24	138	89	32	24	*	27	82	458
Mar '05	53	31	180	75	29	23	*	50	87	533
Sep '05	61	34	211	80	48	16	*	37	97	589
<b>Technical and associate professionals</b>										
Mar '01	110	61	338	232	99	66	21	65	194	1 185
Sep '01	108	73	336	234	87	54	13	83	187	1 176
Mar '02	119	86	323	227	104	69	18	73	188	1 207
Sep '02	121	73	364	248	100	57	18	68	157	1 207
Mar '03	110	60	322	218	88	52	16	70	194	1 131
Sep '03	115	79	364	222	77	61	14	70	156	1 159
Mar '04	126	73	339	216	76	60	19	65	158	1 132
Sep '04	138	89	321	208	84	42	15	76	177	1 149
Mar '05	127	73	324	207	75	50	15	79	178	1 129
Sep '05	134	75	355	228	72	52	19	91	171	1 196

## 6.3 The employed (15-65 years) by main occupation and province, 2001-2005 (thousands) (cont.)

Main occupation	Eastern Cape	Free State	Gauteng	KwaZulu-Natal	Limpopo	Mpumalanga	Northern Cape	North West	Western Cape	Total
<b>Clerks</b>										
Mar '01	89	66	389	182	42	43	22	60	178	1 071
Sep '01	85	67	366	197	40	65	20	63	188	1 091
Mar '02	81	66	406	188	49	57	21	61	179	1 108
Sep '02	85	65	415	193	41	55	23	69	164	1 110
Mar '03	83	63	404	190	36	56	23	65	181	1 100
Sep '03	87	75	403	205	54	59	24	63	185	1 156
Mar '04	78	68	433	181	50	62	24	57	218	1 172
Sep '04	103	71	405	174	50	50	22	77	217	1 169
Mar '05	110	71	413	191	48	57	24	68	216	1 198
Sep '05	108	67	410	167	60	58	25	61	232	1 188
<b>Service workers and shop and market sales workers</b>										
Mar '01	174	102	489	298	148	109	28	137	184	1 670
Sep '01	146	85	419	265	123	88	25	81	198	1 429
Mar '02	152	74	388	236	117	77	19	79	183	1 325
Sep '02	133	74	369	237	102	76	21	71	160	1 244
Mar '03	141	79	355	243	119	79	20	81	174	1 291
Sep '03	151	78	380	274	95	79	18	88	198	1 361
Mar '04	128	89	406	249	96	89	20	90	180	1 347
Sep '04	150	99	418	265	129	74	23	92	205	1 453
Mar '05	155	94	404	266	124	76	22	107	213	1 460
Sep '05	167	108	455	293	124	82	27	139	212	1 607

## 6.3 The employed (15-65 years) by main occupation and province, 2001-2005 (thousands) (cont.)

Main occupation	Eastern Cape	Free State	Gauteng	KwaZulu-Natal	Limpopo	Mpumalanga	Northern Cape	North West	Western Cape	Total
<b>Skilled agricultural and fishery workers</b>										
Mar '01	322	65	64	222	70	74	20	64	49	951
Sep '01	164	46	60	60	45	30	22	49	43	521
Mar '02	517	55	79	126	70	57	29	72	50	1 055
Sep '02	188	54	37	195	47	50	24	58	51	706
Mar '03	254	11	*	51	15	24	13	28	26	428
Sep '03	93	11	*	99	23	32	*	52	17	341
Mar '04	108	17	*	62	16	32	*	33	32	311
Sep '04	122	11	*	98	16	25	*	26	17	329
Mar '05	200	19	11	133	11	25	*	15	14	432
Sep '05	107	11	12	98	*	19	*	21	18	302
<b>Craft and related trades workers</b>										
Mar '01	127	125	410	296	114	137	29	144	178	1 559
Sep '01	166	126	385	235	122	119	25	163	188	1 529
Mar '02	133	113	362	244	115	116	27	150	158	1 417
Sep '02	147	92	371	253	124	118	26	125	205	1 460
Mar '03	128	108	373	241	93	121	24	124	192	1 405
Sep '03	146	119	370	214	98	135	25	132	214	1 454
Mar '04	102	120	377	236	96	127	24	118	217	1 417
Sep '04	150	117	410	258	112	155	32	109	195	1 538
Mar '05	143	121	480	292	102	137	27	126	213	1 642
Sep '05	174	116	510	294	120	153	28	125	224	1 744

## 6.3 The employed (15-65 years) by main occupation and province, 2001-2005 (thousands) (cont.)

Main occupation	Eastern Cape	Free State	Gauteng	KwaZulu-Natal	Limpopo	Mpumalanga	Northern Cape	North West	Western Cape	Total
<b>Plant and machine operators and assemblers</b>										
Mar '01	88	131	292	245	57	91	16	131	118	1 168
Sep '01	76	135	250	246	51	98	18	118	135	1 127
Mar '02	73	133	297	212	57	101	15	144	128	1 160
Sep '02	69	142	283	209	57	93	17	164	122	1 156
Mar '03	70	132	287	227	64	93	19	156	150	1 198
Sep '03	63	125	281	247	54	81	14	149	132	1 145
Mar '04	64	124	292	222	54	69	23	150	159	1 158
Sep '04	90	104	328	216	77	81	21	92	104	1 113
Mar '05	72	122	361	219	80	78	22	85	133	1 172
Sep '05	82	92	310	239	85	72	17	118	112	1 127
<b>Elementary occupations</b>										
Mar '01	282	191	474	562	296	221	85	187	380	2 679
Sep '01	281	176	393	386	256	178	73	174	335	2 253
Mar '02	309	149	381	369	233	166	75	141	418	2 241
Sep '02	263	143	413	414	227	169	70	184	413	2 296
Mar '03	332	195	460	445	247	204	79	191	407	2 561
Sep '03	325	173	464	421	265	211	76	175	419	2 530
Mar '04	305	207	437	455	278	228	73	206	436	2 624
Sep '04	317	162	515	407	288	217	70	220	424	2 619
Mar '05	366	168	570	404	233	227	72	220	411	2 670
Sep '05	348	192	623	497	265	211	73	213	388	2 811

Source: Stats SA, Labour force database

<sup>1</sup>Includes employers, employees and self-employed.

\* For all values of 10 000 or lower the sample size is too small for reliable estimates.  
Totals include domestic workers, other and unspecified occupation.

## 6.4 The employed (15-65 years) by main industry and province, 2001-2005 (thousands)

Main industry	Eastern Cape	Free State	Gauteng	KwaZulu-Natal	Limpopo	Mpumalanga	Northern Cape	North West	Western Cape	Total
<b>Total</b>										
Mar '01	1 401	905	3 025	2 407	939	842	266	918	1 572	12 275
Sep '01	1 236	875	2 825	2 006	847	727	244	858	1 564	11 181
Mar '02	1 622	848	2 867	1 992	851	743	246	836	1 612	11 617
Sep '02	1 241	810	2 904	2 108	816	739	247	860	1 571	11 296
Mar '03	1 350	821	2 889	2 013	782	733	241	839	1 637	11 304
Sep '03	1 210	815	2 985	2 099	793	777	229	862	1 652	11 424
Mar '04	1 123	837	3 019	2 013	802	776	236	841	1 745	11 392
Sep '04	1 278	777	3 070	2 092	883	789	229	835	1 691	11 643
Mar '05	1 398	794	3 222	2 125	793	764	226	875	1 711	11 907
Sep '05	1 352	797	3 441	2 178	871	778	231	928	1 726	12 301
<b>Agriculture, hunting, forestry and fishing</b>										
Mar '01	389	140	26	341	145	144	73	90	228	1 577
Sep '01	253	129	23	165	148	93	72	97	198	1 178
Mar '02	606	128	30	248	158	119	74	109	267	1 739
Sep '02	268	134	57	333	124	113	67	101	223	1 420
Mar '03	362	116	16	207	104	105	62	92	224	1 288
Sep '03	197	120	28	239	119	116	67	109	217	1 212
Mar '04	211	132	27	239	123	110	63	91	263	1 258
Sep '04	207	73	63	209	114	112	45	88	152	1 063
Mar '05	303	83	48	242	68	115	40	83	187	1 170
Sep '05	179	67	53	209	78	90	43	80	127	925

## 6.4 The employed (15-65 years) by main industry and province, 2001-2005 (thousands) (cont.)

Main industry	Eastern Cape	Free State	Gauteng	KwaZulu-Natal	Limpopo	Mpumalanga	Northern Cape	North West	Western Cape	Total
<b>Mining and quarrying</b>										
Mar '01	*	123	145	12	20	74	28	157	*	566
Sep '01	*	128	126	*	24	75	21	166	*	554
Mar '02	*	120	129	*	27	69	18	166	*	543
Sep '02	*	93	124	*	37	76	22	200	*	559
Mar '03	-	95	116	*	35	78	20	203	*	558
Sep '03	*	100	119	-	32	78	22	197	*	552
Mar '04	*	99	119	*	28	82	19	202	*	558
Sep '04	*	89	87	*	61	39	24	95	*	405
Mar '05	*	92	87	*	67	39	25	103	*	426
Sep '05	*	93	70	*	67	37	22	114	*	411
<b>Manufacturing</b>										
Mar '01	139	70	488	416	54	86	16	79	270	1 619
Sep '01	130	79	503	400	67	84	15	79	262	1 620
Mar '02	149	76	470	388	68	86	12	82	268	1 598
Sep '02	131	77	521	386	60	88	15	74	283	1 633
Mar '03	137	73	498	360	51	73	15	83	295	1 585
Sep '03	132	75	501	349	51	94	*	68	270	1 550
Mar '04	126	74	504	339	66	76	15	61	333	1 594
Sep '04	171	80	518	382	67	105	14	90	287	1 714
Mar '05	155	78	583	339	65	81	11	74	266	1 652
Sep '05	162	78	523	391	78	106	*	80	279	1 706

## 6.4 The employed (15-65 years) by main industry and province, 2001-2005 (thousands) (cont.)

Main industry	Eastern Cape	Free State	Gauteng	KwaZulu-Natal	Limpopo	Mpumalanga	Northern Cape	North West	Western Cape	Total
<b>Electricity, gas and water supply</b>										
Mar '01	*	*	23	19	17	20	*	*	*	101
Sep '01	*	*	20	19	*	17	*	*	*	94
Mar '02	*	*	19	13	11	14	*	*	*	82
Sep '02	*	*	18	17	*	16	*	*	*	84
Mar '03	*	*	20	15	12	15	*	*	*	86
Sep '03	*	*	27	21	*	13	*	*	11	91
Mar '04	*	*	35	17	12	14	*	*	15	106
Sep '04	*	*	37	14	*	15	*	*	*	99
Mar '05	*	*	57	15	*	15	*	*	*	125
Sep '05	*	*	31	21	*	11	*	*	11	100
<b>Construction</b>										
Mar '01	77	36	158	120	60	45	*	40	93	639
Sep '01	108	35	129	105	62	52	*	44	91	634
Mar '02	92	28	120	107	57	48	*	37	79	578
Sep '02	92	22	136	108	53	40	11	39	103	605
Mar '03	85	25	149	104	148	45	*	27	99	591
Sep '03	114	34	129	116	46	44	*	34	139	664
Mar '04	89	38	127	119	54	50	*	32	143	659
Sep '04	120	43	215	120	58	67	12	44	144	824
Mar '05	86	55	217	130	47	67	*	50	150	813
Sep '05	107	42	305	139	42	69	*	61	159	935



## 6.4 The employed (15-65 years) by main industry and province, 2001-2005 (thousands) (cont.)

Main industry	Eastern Cape	Free State	Gauteng	KwaZulu-Natal	Limpopo	Mpumalanga	Northern Cape	North West	Western Cape	Total
<b>Wholesale and retail</b>										
Mar '01	305	188	778	631	331	226	42	220	332	3 052
Sep '01	273	156	643	449	235	177	36	167	317	2 454
Mar '02	267	146	666	405	211	165	35	145	276	2 318
Sep '02	232	128	601	409	211	169	35	154	255	2 194
Mar '03	264	156	606	405	213	176	37	147	323	2 327
Sep '03	236	155	667	449	213	188	34	153	334	2 429
Mar '04	209	155	710	396	199	178	42	158	308	2 355
Sep '04	257	167	680	450	250	182	39	177	341	2 542
Mar '05	308	160	705	481	221	179	45	196	353	2 649
Sep '05	334	178	838	533	282	179	46	214	419	3 024
<b>Transport, storage and communication</b>										
Mar '01	56	27	190	132	23	31	*	39	73	580
Sep '01	52	31	174	125	21	25	*	25	85	546
Mar '02	51	24	216	114	19	22	*	29	90	571
Sep '02	53	29	216	128	20	21	*	24	76	574
Mar '03	47	26	203	129	22	24	*	29	91	580
Sep '03	49	27	179	115	26	26	*	22	86	537
Mar '04	46	26	208	123	24	22	*	35	91	582
Sep '04	49	30	187	130	29	34	*	25	70	563
Mar '05	48	35	190	124	37	33	*	30	87	593
Sep '05	56	30	211	140	32	34	*	26	80	616

## 6.4 The employed (15-65 years) by main industry and province, 2001-2005 (thousands) (cont.)

Main occupation	Eastern Cape	Free State	Gauteng	KwaZulu-Natal	Limpopo	Mpumalanga	Northern Cape	North West	Western Cape	Total
<b>Financial insurance, real estate and business services</b>										
Mar '01	56	58	470	154	24	32	11	44	162	1 009
Sep '01	55	49	443	187	23	40	*	33	195	1 035
Mar '02	60	40	447	173	30	43	*	30	206	1 038
Sep '02	54	44	501	162	27	31	*	44	213	1 084
Mar '03	53	48	493	161	20	43	*	36	174	1 038
Sep '03	69	41	506	182	21	42	*	36	194	1 098
Mar '04	58	48	490	168	26	52	*	34	183	1 070
Sep '04	74	46	481	161	42	40	12	61	230	1 147
Mar '05	87	41	466	186	39	49	*	64	199	1 141
Sep '05	84	52	572	186	44	56	13	69	219	1 296
<b>Community, social and personal services</b>										
Mar '01	232	147	503	351	189	110	47	142	296	2 017
Sep '01	219	158	499	352	191	98	36	147	290	1 989
Mar '02	235	158	490	339	207	109	39	125	306	2 009
Sep '02	243	158	511	361	199	111	40	132	288	2 043
Mar '03	239	165	551	385	199	106	44	128	301	2 119
Sep '03	256	165	585	394	201	115	41	141	283	2 180
Mar '04	243	169	588	387	190	125	44	134	279	2 158
Sep '04	266	166	549	387	188	107	45	154	322	2 185
Mar '05	264	157	588	382	180	112	45	169	336	2 235
Sep '05	281	170	529	387	186	106	49	178	307	2 192

## 6.4 The employed (15-65 years) by main industry and province, 2001-2005 (thousands) (cont.)

Main industry	Eastern Cape	Free State	Gauteng	KwaZulu-Natal	Limpopo	Mpumalanga	Northern Cape	North West	Western Cape	Total
<b>Private households</b>										
Mar '01	135	111	220	202	72	72	30	100	94	<b>1 036</b>
Sep '01	127	103	246	195	62	64	36	96	103	<b>1 036</b>
Mar '02	152	120	244	198	63	65	37	105	100	<b>1 082</b>
Sep '02	156	113	174	192	78	72	41	88	115	<b>1 029</b>
Mar '03	153	112	201	233	76	68	37	89	119	<b>1 088</b>
Sep '03	150	93	224	228	77	62	31	97	116	<b>1 075</b>
Mar '04	133	95	200	219	78	65	28	88	120	<b>1 025</b>
Sep '04	124	80	246	231	65	81	27	92	130	<b>1 075</b>
Mar '05	127	87	278	209	61	71	27	98	118	<b>1 075</b>
Sep '05	138	82	295	161	56	87	26	98	123	<b>1 067</b>

Source: Stats SA, Labour force database

<sup>1</sup>Includes employers, employees and self-employed.

\* For all values of 10 000 or lower the sample size is too small for reliable estimates.  
Totals include exterritorial organisations and foreign governments, other and unspecified industry.

## 6.5 Number of employees and gross earnings by industry, 2005

Industry	Number of employees 2005 (thousands)				Gross earnings 2005 (R millions)			
	Mar	Jun	Sep	Dec	Mar	Jun	Sep	Dec
Mining and quarrying	449	444	444	434	8 435	8 450	9 280	9 623
Manufacturing	1 176	1 182	1 189	1 199	23 044	22 940	23 837	27 555
Electricity, gas and water supply	44	44	45	45	1 825	2 700	1 944	2 372
Construction	375	432	439	450	4 664	5 619	5 779	6 934
Wholesale and retail trade; repair of motor vehicles, motor cycles and personal and household goods; hotels and restaurants	1 347	1 373	1 381	1 431	19 319	19 748	20 768	23 482
Transport, storage and communication	312	320	322	318	9 461	10 233	10 123	10 539
Financial intermediation, insurance, real estate and business services	1 449	1 478	1 524	1 554	33 935	34 331	36 368	38 822
Community, social and personal services	1 793	1 805	1 821	1 824	45 763	47 629	48 221	51 405
<b>Total all industries</b>	<b>6 945</b>	<b>7 078</b>	<b>7 165</b>	<b>7 255</b>	<b>146 446</b>	<b>151 650</b>	<b>156 320</b>	<b>170 732</b>

Source: Stats SA, *Quarterly employment statistics* (Statistical release P0277.1)

As from December 2004, Stats SA introduced a new employment statistics survey that covers all employing enterprises in the formal non-agricultural business sector of the South African economy that is registered for Income Tax (IT), resulting in the extensive coverage of all small businesses. Previously the coverage was restricted to both employing and non-employed VAT registered enterprises with an annual turnover of R300 000 or more. By restricting the coverage to employing businesses, the new survey is able to provide estimates for employment and earnings as well as estimates for average monthly earnings, that is in accordance with the International Labour Organisation (ILO) definitions and concepts. The publication of a breakup of information subjected to each industry is not considered at the moment.

## 6.6 Average monthly earnings, at current prices, by industry, 2005

Industry	Including bonuses and overtime payments 2005				Excluding bonuses payments and overtime 2005			
	Feb	May	Aug	Nov	Feb	May	Aug	Nov
Mining and quarrying <sup>1</sup>	6 250	6 450	7 078	7 212	-	-	-	-
Manufacturing	6 380	6 250	6 502	6 783	5 877	5 839	6 044	6 200
Electricity, gas and water supply	13 127	13 629	14 212	14 594	13 000	12 771	13 437	13 544
Construction	4 128	4 238	4 301	4 251	3 895	4 011	4 075	3 993
Wholesale and retail trade; repair of motor vehicles, motor cycles and personal and household goods; hotels and restaurants	4 660	4 641	4 841	4 940	4 521	4 496	4 678	4 763
Transport, storage and communication	10 118	10 046	10 429	10 432	9 869	9 735	10 113	10 074
Financial intermediation, insurance, real estate and business services	7 182	7 200	7 430	7 575	6 947	6 966	7 044	7 218
Community, social and personal services	8 117	8 269	8 463	8 575	7 935	8 019	8 264	8 344
<b>Average all industries</b>	<b>6 742</b>	<b>6 758</b>	<b>7 006</b>	<b>7 112</b>	-	-	-	-

Source: Stats SA, *Quarterly employment statistics* (Statistical release P0277.2)

<sup>1</sup>Data are obtained from the Minerals Bureau, Department of Minerals and Energy. At this stage the Department of Minerals and Energy is unable to provide data items with regard to bonuses and overtime payments separately.

Average monthly earnings at current prices are calculated by dividing the total gross earnings, excluding severance, termination and redundancy payments, for the reference month by the number of employees as at the end of the reference month.



Prices:

7



# 7

## Prices:

7.1	Production price index (PPI) and consumer price index (CPI) for the metropolitan areas, 1999-2005 (base year 2000=100)	65
7.2	Annual inflation on a monthly basis in the CPI for metropolitan areas, 2005	66
7.3	Annual inflation on a monthly basis for the PPI, 2005	66
7.4	Percentage change in the average annual production price and consumer price indices, 1999-2005	67
7.5	Consumer price index (CPI) by province, 2001-2005 (base year 2000=100)	68
7.6	Consumer price index excluding interest rates on mortgage bonds (CPIX) and core index for the metropolitan and other urban areas, 2001-2005 (base year 2000=100)	69
7.7	Relative price fluctuations (based on the consumer price index), 1910-2005	70



### 7.1 Production price index (PPI) and consumer price index (CPI) for the metropolitan areas, 1999-2005 (base year 2000=100)

	1999	2000	2001	2002	2003	2004	2005
Production price index <sup>1</sup>	91,6	100	108,4	123,8	125,9	126,7	130,6
Locally produced commodities	93,2	100	107,8	122,4	127,2	130,1	133,9
Imported commodities	87,4	100	110,0	127,1	121,8	117,1	121,3
Percentage change compared with the previous year <sup>2</sup>	5,8	9,2	8,4	14,2	1,7	0,6	3,1
Consumer price index <sup>1</sup>	94,9	100	105,7	115,4	122,1	123,8	128,0
Percentage change compared with the previous year (inflation rate) <sup>2</sup>	5,2	5,4	5,7	9,2	5,8	1,4	3,4

Sources: Stats SA, *Production price index (PPI)* (Statistical release P0142.1) and *Consumer price index (CPI)* (Statistical release P0141.1)

<sup>1</sup> Average annual index (2000=100).

<sup>2</sup> Based on the average annual index.

## 7.2 Annual inflation on a monthly basis in the CPI for metropolitan areas, 2005

	Jan	Feb	Mar	Apr	May	Jun	Jul	Aug	Sep	Oct	Nov	Dec
Index	125,4	125,6	126,9	127,6	127,6	127,4	128,5	129,0	129,5	129,6	129,5	129,5
%	+3,0	+2,6	+3,0	+3,4	+3,3	+2,8	+3,4	+3,9	+4,4	+4,0	+3,4	+3,6

## 7.3 Annual inflation on a monthly basis for the PPI, 2005

	Jan	Feb	Mar	Apr	May	Jun	Jul	Aug	Sep	Oct	Nov	Dec
Index	126,4	126,7	127,4	128,6	129,3	131,2	132,6	133,3	132,6	132,7	133,4	133,5
%	+1,4	+1,2	+1,9	+1,8	+2,4	+2,3	+3,6	+4,2	+4,6	+4,2	+4,5	+5,1

#### 7.4 Percentage change in the average annual production price and consumer price indices, 1999-2005



## 7.5 Consumer price index (CPI) by province, 2001-2005 (base year 2000=100)

	Eastern Cape	Free State	Gauteng	KwaZulu- Natal	Mpuma- langa	Northern Cape	Limpopo	North West	Western Cape	South Africa
<b>Consumer price index (all items)</b>										
2001	105,2	104,9	105,3	105,8	105,6	106,6	105,5	105,4	106,0	105,7
2002	116,7	112,5	114,6	116,3	116,8	116,8	114,9	115,3	116,5	115,4
2003	124,1	118,4	121,7	123,4	124,6	124,4	120,8	123,3	123,4	122,1
2004	126,5	120,4	123,7	124,8	126,7	126,7	121,5	123,8	125,2	123,8
2005	130,5	124,5	128,1	128,2	131,7	131,9	125,1	128,8	129,4	128,0
<b>Percentage change compared with the previous year (inflation rate)</b>										
2001	5,2%	4,9%	5,3%	5,8%	5,6%	6,6%	5,5%	5,4%	6,0%	5,7%
2002	10,9%	7,2%	8,8%	9,9%	10,6%	9,6%	8,9%	9,4%	9,9%	9,2%
2003	6,3%	5,2%	6,2%	6,1%	6,7%	6,5%	5,1%	6,9%	5,9%	5,8%
2004	1,9%	1,7%	1,6%	1,1%	1,7%	1,8%	0,6%	0,4%	1,5%	1,4%
2005	3,2%	3,4%	3,6%	2,7%	3,9%	4,1%	3,0%	4,0%	3,4%	3,4%

Source: Stats SA, *Consumer price index* (Statistical release P0141.1)

Percentage change compared with the previous year (inflation rate) is based on the annual average weighted index. From 1997 the indices are based on information for the main metropolitan areas, as well as other urban areas; prior to 1997 the indices were based on information for metropolitan areas only.

### 7.6 Consumer price index excluding interest rates on mortgage bonds (CPIX) and core index for the metropolitan and other urban areas, 2001-2005 (base year 2000=100)

	2001	2002	2003	2004	2005
CPIX <sup>1</sup>	106,6	116,5	124,4	129,8	134,9
Core index <sup>2</sup>	106,9	115,7	123,4	129,1	134,2
Food price index <sup>3</sup>	105,4	122,0	131,9	134,9	137,9

Sources: Stats SA, *Consumer price index (CPI)* (Statistical releases P0141.1)

<sup>1</sup> CPIX is the CPI which excludes interest rates on mortgage bonds.

<sup>2</sup> The core index is derived from the CPI by making certain exclusions. The exclusions, and the reasons for exclusions, are as follows:

- Fresh and frozen meat and fish: prices may be highly volatile, particularly during and following periods of drought.
- Fresh and frozen vegetables and fresh fruit and nuts: prices may be highly volatile from month to month due to their sensitivity to climatic conditions.
- Interest rates on mortgage bonds and overdrafts/ personal loans: these are excluded due to their 'perverse' effect on the CPI. A tightening in monetary policy to counter inflation pressures would cause interest rates to rise and be reflected in the interdict cost component of measured inflation. This, in turn, could provoke a further tightening of monetary policy, resulting in excessive movements in the inflation rate.
- Changes in value-added tax (VAT): VAT is predominantly determined by government (fiscal policy).
- Assessment rates: these taxes are predominantly determined by local government.

<sup>3</sup> The food price index figures are only for the metropolitan areas.

## 7.7 Relative price fluctuations (based on the consumer price index), 1910-2005

	1910	1930	1950	1970	1980	1985	1990	1995	1996	1997	1998	1999	2000	2001	2002	2003	2004	2005
1910	1,00																	
1930	1,40	1,00																
1950	2,10	1,50	1,00															
1970	3,90	2,79	1,86	1,00														
1980	10,80	7,71	5,14	2,77	1,00													
1985	20,80	14,86	9,90	5,33	1,93	1,00												
<b>1990</b>	42,40	30,29	20,19	10,87	3,93	2,04	<b>1,00</b>											
1995	72,40	51,71	34,48	18,56	6,70	3,48	1,71	1,00										
1996	77,70	55,50	37,00	19,92	7,19	3,74	1,83	1,07	1,00									
1997	84,40	60,29	40,19	21,64	7,81	4,06	1,99	1,17	1,09	1,00								
1998	90,20	64,43	42,95	23,13	8,35	4,34	2,13	1,25	1,16	1,07	1,00							
1999	94,90	67,79	45,19	24,33	8,79	4,56	2,24	1,31	1,22	1,12	1,05	1,00						
<b>2000</b>	100,00	71,43	47,62	25,64	9,26	4,81	2,36	1,38	1,29	1,18	1,11	1,05	<b>1,00</b>					
2001	105,70	75,50	50,33	27,10	9,79	5,08	2,49	1,46	1,36	1,25	1,17	1,11	1,06	1,00				
2002	115,40	82,43	54,95	29,59	10,69	5,55	2,72	1,59	1,49	1,37	1,28	1,22	1,15	1,09	1,00			
2003	122,10	87,21	58,14	31,31	11,31	5,87	2,88	1,69	1,57	1,45	1,35	1,29	1,22	1,16	1,06	1,00		
2004	123,80	88,43	58,95	31,47	11,46	5,95	2,92	1,71	1,59	1,47	1,37	1,30	1,24	1,17	1,07	1,01	1,00	
2005	128,00	91,43	60,95	32,82	11,85	6,15	<b>3,02</b>	1,77	1,65	1,52	1,42	1,35	<b>1,28</b>	1,21	1,11	1,05	1,03	1,00

Source: Stats SA

The table indicates the average level of consumer prices in any specific year compared with a rand (100c) in different base years. For example, food and services that would have cost **R1,00** in **1990**, cost **R3,02** in **2005**, and food and services that would have cost **R1,00** in **2000**, cost **R1,28** in **2005**.







Mining:

8



# 8

## Mining:

- |     |  |    |
|-----|--|----|
| 8.1 | Index of the physical volume of mining production, 2001-2005<br>(base year 2000=100) | 75 |
| 8.2 | Total value of mineral sales, 2001-2005 (R millions)                                 | 76 |

**8.1 Index of the physical volume of mining production, 2001-2005 (base year 2000=100)**

	2001 <sup>1</sup>	2002 <sup>1</sup>	2003 <sup>1</sup>	2004 <sup>1</sup>	2005 <sup>1</sup>
Physical volume, including gold Actual indices	101,4	102,2*	106,6	110,3	111,6
Physical volume, excluding gold Actual indices	104,8	105,6*	113,6	121,3	126,6

Source: Stats SA, *Mining: Production and sales* (Statistical release P2041)

<sup>1</sup> Indices from 2000-2003 (base year 2000=100).

**8.2 Total value of mineral sales, 2001-2005 (R millions)**

	2001	2002	2003	2004	2005
Mineral sales, including gold Actual values	115 358*	137 505*	117 805	125 057	142 785
Mineral sales, excluding gold Actual values	86 347*	96 119*	84 473	95 728	118 184





Manufacturing:

9



# 9

## Manufacturing:

- |     |   |    |
|-----|---|----|
| 9.1 | Index of the physical volume of manufacturing production by manufacturing division (actual indices), 2001-2005 (base year 2000=100) | 81 |
| 9.2 | Value of sales of manufactured products by manufacturing division (actual values), 2001-2005 (R thousands)                          | 82 |
| 9.3 | Utilisation of production capacity on selected major divisions, 2001-2005 (percentages)   | 83 |



### 9.1 Index of the physical volume of manufacturing production by manufacturing division (actual indices), 2001-2005 (base year 2000=100)

	2001	2002	2003	2004	2005
<b>Manufacturing division</b>					
Food and beverages	105,0	102,0	103,9	111,7	118,7
Textiles, clothing, leather and footwear	97,5	104,3	96,1	100,3	97,9
Wood and wood products; paper; publishing and printing	97,6	100,4	100,8	104,0	109,0
Petroleum, chemical products, rubber and plastic products	103,2	110,8	106,6	110,9	113,3
Glass and non-metallic mineral products	103,5	108,6	106,7	113,1	122,9
Basic iron and steel, non-ferrous metal products; metal products and machinery	104,2	112,9	111,4	114	113,1
Electrical machinery	101,4	103,0	100,7	98,4	97,7
Radio, television and communication apparatus; professional equipment	93,4	98,9	104,4	111,6	113,2
Motor vehicles, parts and accessories and other transport equipment	108,2	110,3	107,9	115,5	128,5
Furniture and other manufacturing divisions	98,5	104,1	97,4	100,9	108,0
<b>Total</b>	<b>102,8</b>	<b>107,4</b>	<b>105,4</b>	<b>110,0</b>	<b>113,8</b>

Source: Stats SA, *Manufacturing: Production and sales* (Statistical release P3041.2)

The sample of manufacturing production and sales is based on an updated version of Stats SA's business register, based on the database of units registered for value-added tax (VAT) and income tax (IT), obtained from the South African Revenue Service (SARS).

## 9.2 Value of sales of manufactured products by manufacturing division (actual values), 2001-2005 (R thousands)

	2001	2002	2003	2004	2005
<b>Manufacturing division</b>					
Food and beverages	110 446 558	132 139 488	135 529 783	148 166 706	153 498 313
Textiles, clothing, leather and footwear	33 666 109	39 369 851	37 918 776	39 372 990	38 738 665
Wood and wood products; paper; publishing and printing	56 566 124	66 334 900	69 077 426	71 605 117	76 805 213
Petroleum, chemical products, rubber and plastic products	127 351 759	156 470 952	146 098 004	158 936 314	170 118 397
Glass and non-metallic mineral products	15 988 143	18 876 466	20 005 741	22 892 021	25 708 507
Basic iron and steel, non-ferrous metal products; metal products and machinery	118 467 380	149 780 058	151 486 483	168 940 494	172 109 761
Electrical machinery	16 121 648	19 182 638	18 552 219	19 284 876	20 183 146
Radio, television and communication apparatus; professional equipment	8 016 058	9 874 135	10 309 152	10 976 789	11 542 033
Motor vehicles, parts and accessories and other transport equipment	90 721 733	112 616 998	109 241 229	120 128 726	137 870 382
Furniture and other manufacturing divisions	31 633 213	37 248 471	33 250 434	35 644 657	40 430 591
<b>Total</b>	<b>608 978 725</b>	<b>741 893 957</b>	<b>731 469 247</b>	<b>795 948 690</b>	<b>847 005 008</b>

Source: Stats SA, *Manufacturing: Production and sales* (Statistical release P3041.2)

The levels for manufacturing sales in this publication are slightly different from previously published data due to the implementation of a new sample drawn in August 2005. Differences in industry major groups and divisions could be mostly attributed to reclassification of businesses to other industries or manufacturing divisions based on shifts in their predominant activity.

## 9.3 Utilisation of production capacity on selected major divisions, 2001-2005 (percentages)

	2001	2002	2003	2004 <sup>2</sup>	2005	Weights <sup>3</sup>
Food and beverages	77,6	76,6	77,2	80,8	83,6	16,4
Textiles, clothing, leather and footwear	81,1	83,8	80,8	83,7	79,0	5,4
Wood and wood products, paper, publishing and printing	82,8	84,4	85,8	87,7	89,0	11,0
Petroleum, chemical products, rubber and plastic products	80,3	80,7	80,8	84,0	83,7	22,5
Basic iron and steel, non-ferrous metal, metal products and machinery	83,9	84,3	83,9	85,3	86,2	22,4
Motor vehicles, parts and accessories and other transport equipment	73,6	77,3	76,3	81,8	83,2	8,9
Furniture and other manufacturing industries	78,5	79,5	81,4	89,2	90,9	5,8
<b>All manufacturing<sup>1</sup></b>	<b>80,3</b>	<b>81,1</b>	<b>81,2</b>	<b>84,5</b>	<b>85,2</b>	<b>100,0</b>

Source: Stats SA, *Manufacturing: Production and sales* (Statistical release P3041.2)

<sup>1</sup> Total includes all manufacturing divisions.

<sup>2</sup> Comparability break: From 2004 the results are from a new survey based on Stats SA's new business register.

<sup>3</sup> Weights based on value added results of the 2001 large sample survey of manufacturing.



Construction:

10

## Construction:

- |      |   |    |
|------|---|----|
| 10.1 | Actual expenditure on new construction works by the public sector, including reconstruction and development programmes (RDP), according to type of new construction works, 1999-2003 (R thousands)                            | 87 |
| 10.2 | Capital expenditure by the national and provincial governments for the financial year ended 31 March on reconstruction and development programmes (RDP), according to type of new construction works, 2001-2004 (R thousands) | 88 |

### 10.1 Actual expenditure on new construction works by the public sector, including reconstruction and development programmes (RDP), according to type of new construction works, 1999-2003 (R thousands)

	1999	2000	2001	2002	2003
<b>Capital expenditure on new construction works</b>					
Residential buildings	1 240 769	1 701 899	2 216 635	2 445 201	3 945 488
Non-residential buildings	2 740 340	3 173 420	3 099 252	3 613 595	5 112 066
Roads, streets and bridges	2 195 772	2 319 301	2 777 388	2 674 863	5 422 249
Water schemes and works	1 198 963	1 562 741	2 045 083	1 973 878	3 010 980
Sewerage, sanitation and cleansing	745 865	803 888	1 160 844	772 493	1 374 151
Other	7 429 032	7 822 363	6 641 635	7 675 289	15 985 429
Electricity supply	..	..	1 282 753	1 097 642	1 634 868
<b>Total</b>	<b>15 550 741</b>	<b>17 383 612</b>	<b>19 223 590</b>	<b>20 252 961</b>	<b>36 485 231</b>

Source: Stats SA, *Capital expenditure on new construction works by the public sector by statistical region* (Statistical release P9101.2)

New construction works include residential buildings, non-residential buildings, roads, streets and bridges, sewerage, water works, electricity and other constructions.

As from 2004, statistics on capital expenditure on new construction works by the public sector by statistical region (Statistical release P9101.2) were no longer collected.

### 10.2 Capital expenditure by the national and provincial governments for the financial year ended 31 March on reconstruction and development programmes (RDP), according to type of new construction works, 2001-2004 (R thousands)

	Reconciliation and development projects			
	2001	2002	2003	2004
<b>Capital expenditure on RDP</b>				
Residential buildings	446 714	824 306	1 160 983	970 370
Non-residential buildings	62 455	4 399	8 172	2 881
Roads, streets, bridges and related constructions	9 561	75 324	13 707	1 000
Water schemes and works	107 174	94 115	109 215	584 205
Sewerage, sanitation and cleansing	19 107	22 701	22 904	126 114
Electricity supply	43	3 597	0	0
Other construction	195 541	97 650	93 121	16 515
<b>Total</b>	<b>840 595</b>	<b>1 122 092</b>	<b>1 408 102</b>	<b>1 701 085</b>







Energy:

11

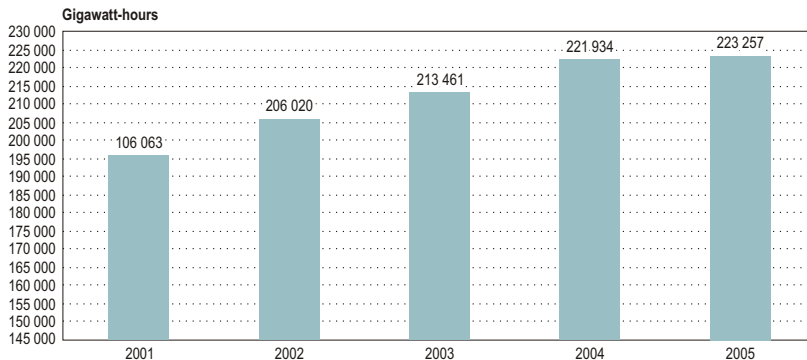


# 11

## Energy:

11.1	Electricity consumed in South Africa, 2001-2005	93
11.2	Electricity consumption by province, 2001-2005 (gigawatt-hours)	94

### 11.1 Electricity consumed in South Africa, 2001-2005



Source: Stats SA, *Electricity generated and available for distribution* (Statistical release P4141)

<sup>1</sup> The figures as from 2001 are for wholesale energy as delivered by Eskom to the various provinces.

The figures on consumption by province exclude the energy used by Eskom for its own consumption as from 2001, while the figures on the graph in 11.1 include Eskom's own consumption as from 2001. Hence the difference in the data in Table 11.2 and on the graph in 11.1.

## 11.2 Electricity consumption by province, 2001-2005 (gigawatt-hours)

	Eastern Cape	Free State	Gauteng	KwaZulu- Natal	Limpopo	Mpuma- langa	Northern Cape	North West	Western Cape	South Africa
2001	6 702	9 467	48 136	36 759	7 173	26 389	4 350	24 328	19 261	<b>182 565</b>
2002	6 992	9 405	52 007	37 629	8 571	25 518	4 175	26 601	19 700	<b>190 598</b>
2003	7 136	9 648	52 531	39 231	9 442	25 279	4 401	28 101	20 581	<b>196 357</b>
2004	7 510	9 626	54 970	42 263	9 791	25 925	4 502	28 187	21 491	<b>204 265</b>
2005	7 713	8 980	55 107	43 049	10 281	29 469	4 649	24 865	21 445	<b>205 558</b>







Transport:

12

# 12

## Transport:

12.1 Volume of goods transported by road and rail, 1999-2003  
(thousand metric tons)

99

**12.1 Volume of goods transported by road and rail, 1999-2003 (thousand metric tons)**

	1999	2000	2001	2002	2003
Private undertakings	432 872	440 255	475 703	488 641	504 674
Transnet	178 992	184 230	184 442	181 551	184 996
<b>Total volume</b>	<b>611 864</b>	<b>624 485</b>	<b>660 145</b>	<b>670 192</b>	<b>689 670</b>

Source: Stats SA, *Land freight transport* (Statistical release P7142)

This survey has been suspended and is undergoing a re-engineering process to improve coverage of the transport and related activities.



Financial statistics:  
Private enterprises  
operating in the  
formal non-agriculture  
business sector:

## Financial statistics: Private enterprises operating in the formal non-agriculture business sector:

13.1	Selected income and expenditure items: Mining and quarrying industry, 2003 and 2004 (R millions)	104
13.2	Selected income and expenditure items: Manufacturing industry, 2003 and 2004 (R millions)	104
13.3	Selected income and expenditure items: Electricity, gas and water supply industry, 2003 and 2004 (R millions)	105
13.4	Selected income and expenditure items: Construction industry, 2003 and 2004 (R millions)	105
13.5	Selected income and expenditure items: Trade industry, 2003 and 2004 (R millions)	106
13.6	Selected income and expenditure items: Transport, storage and communication industry, 2003 and 2004 (R millions)	106
13.7	Selected income and expenditure items: Real estate and other business services industry (excluding financial intermediation and insurance), 2003 and 2004 (R millions)	107
13.8	Selected income and expenditure items: Community, social and personal services industry (excluding government institutions), 2003 and 2004 (R millions)	107
13.9	Comparison of operating ratios between 2003 and 2004	108

### Notes for all tables

<sup>1</sup> Includes the value of sales; amounts received for work done; amounts received for services rendered; rent and/or lease payments received for land and buildings; rent, leasing and hiring received for machinery, vehicles and other equipment, and excludes value-added tax (VAT); net profit or loss on sales or revaluation of fixed assets (including profit or loss on foreign exchange); export freight charges; interest received and excise duty.

<sup>2</sup> Includes raw materials or materials for processing, packaging materials, fuel and consumable and maintenance stores; work in progress (partially completed); finished goods (own manufactures) and finished goods not produced by the enterprise but purchased for resale.

<sup>3</sup> Is calculated as total income *less* total expenditure *less* opening stock *plus* closing stock.

<sup>4</sup> Includes the erection of new buildings and works, additions to and alterations of existing buildings and works; capital work in progress capitalised; new plant and machinery, vehicles and equipment; and used plant and machinery, which was imported by or on behalf of the enterprise whether paid to outside contractors/concerns, or which was done by the enterprise itself.

<sup>5</sup> Non-current assets are fixed assets and intangible assets valued at the book value at the end of the financial year according to the balance sheet.

Due to differences in sampling methods, sampling frames and coverages of industries, statistics of the Economic activity surveys prior to 2003 are not comparable to the 2003 and 2004 surveys.

**13.1 Selected income and expenditure items: Mining and quarrying industry, 2003 and 2004 (R millions)**

Item	2003	2004
Income items		
Turnover <sup>1</sup>	155 652	152 315
Interest received	2 153	2 235
Closing value of inventories <sup>2</sup>	14 733	15 494
Net profit before providing for company tax and dividends <sup>3</sup>	31 567	16 569
Capital expenditure on new assets <sup>4</sup>	28 640	23 529
Book value of non-current assets at the end of the financial year <sup>5</sup>	137 025	148 779

**13.2 Selected income and expenditure items: Manufacturing industry, 2003 and 2004 (R millions)**

Item	2003	2004
Income items		
Turnover <sup>1</sup>	792 390	837 005
Interest received	5 922	5 713
Closing value of inventories <sup>2</sup>	97 549	99 463
Net profit before providing for company tax and dividends <sup>3</sup>	70 708	70 565
Capital expenditure on new assets <sup>4</sup>	33 002	31 149
Book value of non-current assets at the end of the financial year <sup>5</sup>	165 291	187 090



**13.3 Selected income and expenditure items: Electricity, gas and water supply industry, 2003 and 2004 (R millions)**

Item	2003	2004
Income items		
Turnover <sup>1</sup>	39 116	43 157
Interest received	3 088	4 110
Closing value of inventories <sup>2</sup>	2 438	2 390
Net profit before providing for company tax and dividends <sup>3</sup>	5 935	6 128
Capital expenditure on new assets <sup>4</sup>	5 286	7 405
Book value of non-current assets at the end of the financial year <sup>5</sup>	62 643	65 782

**13.4 Selected income and expenditure items: Construction industry, 2003 and 2004 (R millions)**

Item	2003	2004
Income items		
Turnover <sup>1</sup>	90 184	97 459
Interest received	611	619
Closing value of inventories <sup>2</sup>	4 528	5 361
Net profit before providing for company tax and dividends <sup>3</sup>	4 525	3 949
Capital expenditure on new assets <sup>4</sup>	2 710	2 234
Book value of non-current assets at the end of the financial year <sup>5</sup>	9 842	11 049

### 13.5 Selected income and expenditure items: Trade industry, 2003 and 2004 (R millions)

Item	2003	2004
Income items		
Turnover <sup>1</sup>	854 181	911 233
Interest received	5 930	5 506
Closing value of inventories <sup>2</sup>	76 178	76 181
Net profit before providing for company tax and dividends <sup>3</sup>	34 696	37 274
Capital expenditure on new assets <sup>4</sup>	11 992	13 391
Book value of non-current assets at the end of the financial year <sup>5</sup>	67 562	66 989

### 13.6 Selected income and expenditure items: Transport, storage and communication industry, 2003 and 2004 (R millions)

Item	2003	2004
Income items		
Turnover <sup>1</sup>	213 948	235 568
Interest received	3 031	2 369
Closing value of inventories <sup>2</sup>	2 588	2 813
Net profit before providing for company tax and dividends <sup>3</sup>	16 946	20 724
Capital expenditure on new assets <sup>4</sup>	25 699	25 212
Book value of non-current assets at the end of the financial year <sup>5</sup>	139 189	148 425

**13.7 Selected income and expenditure items: Real estate and other business services industry (excluding financial intermediation and insurance), 2003 and 2004 (R millions)**

Item	2003	2004
Income items		
Turnover <sup>1</sup>	219 263	225 535
Interest received	6 032	6 132
Closing value of inventories <sup>2</sup>	5 138	5 765
Net profit before providing for company tax and dividends <sup>3</sup>	43 257	44 452
Capital expenditure on new assets <sup>4</sup>	14 800	13 954
Book value of non-current assets at the end of the financial year <sup>5</sup>	176 898	186 476

**13.8 Selected income and expenditure items: Community, social and personal services industry (excluding government institutions), 2003 and 2004 (R millions)**

Item	2003	2004
Income items		
Turnover <sup>1</sup>	63 997	76 568
Interest received	935	922
Closing value of inventories <sup>2</sup>	2 401	2 479
Net profit before providing for company tax and dividends <sup>3</sup>	6 449	6 941
Capital expenditure on new assets <sup>4</sup>	4 364	3 313
Book value of non-current assets at the end of the financial year <sup>5</sup>	27 496	32 226

13.9 Comparison of operating ratios between 2003 and 2004

Industry	Turnover/ Fixed assets <sup>1</sup>		Profit/ Turnover <sup>2</sup>		Profitability ratio <sup>3</sup>	
	2003	2004	2003	2004	2003	2004
Mining and quarrying industry	1,14	1,02	0,20	0,11	0,13	0,07
Manufacturing industry	4,79	4,47	0,09	0,08	0,06	0,06
Electricity, gas and water supply	0,62	0,66	0,15	0,14	0,11	0,10
Construction industry	9,16	8,82	0,05	0,04	0,04	0,03
Trade industry	12,64	13,60	0,04	0,04	0,03	0,03
Transport, storage and communication industry	1,54	1,59	0,08	0,09	0,06	0,06
Real estate and other business services industry (excluding financial intermediation and insurance)	1,24	1,21	0,20	0,20	0,17	0,17
Community, social and personal services industry (excluding government institutions)	2,33	2,38	0,10	0,09	0,08	0,07

Source: Stats SA, *Economic activity survey, 2004* (Statistical release P0020)

<sup>1</sup> Turnover divided by book value of non-current assets at the end of the financial year.

<sup>2</sup> Net profit before tax divided by turnover.

<sup>3</sup> Net profit after tax divided by turnover.





Selected internal  
trade activities:

14

# 14

## Selected internal trade activities:

14.1	Summary of internal trade statistics, 2001-2005 (R millions)	113
14.2	Summary of tourist accommodation statistics	114



## 14.1 Summary of internal trade statistics, 2001-2005 (R millions)

	2001	2002	2003	2004	2005
<b>Retail trade sales<sup>1</sup></b>					
Sales at current prices	246 719	278 228	308 008	348 296	383 795
Sales at constant prices	233 264	238 577	250 319	274 524	292 977
<b>Wholesale trade<sup>1</sup></b>					
Sales at current prices	363 561	425 947	467 508	540 950	576 153
Sales at constant June 1995 prices	336 299	346 147	373 081	424 831	437 512
<b>Motor trade sales<sup>1</sup></b>					
Trading income	138 943	166 074	186 545	220 306	255 455

Sources: Stats SA, *Retail trade sales* (Statistical release P6242.1), *Wholesale trade sales* (Statistical release P6141.2), *Motor trade sales* (Statistical release P6343.2) and *Hotels: Trading statistics* (Statistical release P6441)

<sup>1</sup> Stats SA introduced new wholesale trade sales, retail trade sales and motor trade sales surveys utilising an upgraded business register commencing with the month of September 2005. The previous surveys and the current ones were run side by side from June to August 2005, which provided a set of factors that could be applied to the old series to revise previous estimates back to January 1998. The January 1998 to May 2005 figures are thus backcasted data based on the movements of the old series and the level of the new series.

## 14.2 Summary of tourist accommodation statistics

	Oct 2004 to Dec 2004	Jan 2005 to Mar 2005	Apr 2005 to Jun 2005	Jul 2005 to Sep 2005	Oct 2005 to Dec 2005	Jan 2006 to Mar 2006
<b>Stay Units</b>						
Average stay units available ('000)	97,9	98,3	98,2	98,1	98,1	98,3
Stay unit nights sold ('000)	4 512,8	4 496,5	3 990,1	4 290,9	4 597,9	4 503,4
Occupancy Rate (%)	50,1	50,8	44,6	47,5	50,9	50,9
<b>Income (R million)</b>						
Income from accommodation	1 942,2	1 934,4	1 508,2	1 702,3	2 036,7	2 108,9
Income from restaurant and bar sales	787,4	719,5	673,9	666,1	806,3	753,1
Other income	258,8	224,0	194,5	277,8	239,5	253,3
<b>Total income (R million)</b>	<b>2 988,4</b>	<b>2 877,9</b>	<b>2 376,6</b>	<b>2 646,2</b>	<b>3 082,5</b>	<b>3 115,3</b>

Source: Stats SA, *Tourist accommodation* (Statistical release P6410)

The *hotel trading statistics survey* has been discontinued since March 2004. It has been replaced by the *Tourist accommodation survey*, which started in September 2004. The *Tourist accommodation survey* includes bed and breakfast establishments, guest houses, hotels, lodges, self-catering accommodation, caravan parks and camping sites and other accommodation establishments. Figures for the last twelve months are regarded as preliminary.





Social services and  
housing:

15

## Social services and housing:

15.1	Households by type of dwelling and province, 2002-2005 (thousands)	120
15.2	Households by energy source for cooking by province, 2002-2005 (thousands)	124
15.3	Households by energy source for heating by province, 2002-2005 (thousands)	126
15.4	Households by energy source for lighting by province, 2002-2005 (thousands)	128
15.5	Households by energy source for cooking by population group, 2002-2005 (thousands)	130
15.6	Households by energy source for heating by population group, 2002-2005 (thousands)	132
15.7	Households by energy source for lighting by population group, 2002-2005 (thousands)	134
15.8	Households by main source of water by province, 2002-2005 (thousands)	136

15.9	Households with and without a telephone facility by population group and gender of the household head, 2002-2005 (thousands)	140
15.10	Households by sanitation facility and population group of the household head, 2002-2005 (thousands)	142
15.11	Households by type of refuse removal by population group of the household head, 2002-2005 (thousands)	144
15.12	Total number of households receiving basic water services from municipalities: South Africa	146
15.13	Total number of households receiving basic electricity services from municipalities: South Africa	147
15.14	Households receiving water services from municipalities: South Africa	148
15.15	Households receiving electricity services from municipalities: South Africa	149

## 15.1 Households by type of dwelling and province, 2002-2005 (thousands)

Type of dwelling	Eastern Cape	Free State	Gauteng	KwaZulu-Natal	Limpopo	Mpumalanga	Northern Cape	North West	Western Cape	South Africa
<b>House on a separate stand or yard or on farm</b>										
2002	693	501	1 306	1 085	931	504	198	712	688	<b>6 617</b>
2003	794	537	1 404	1 148	963	542	189	715	691	<b>6 983</b>
2004	643	559	1 380	1 098	1 019	556	204	777	734	<b>6 969</b>
2005	751	539	1 338	1 135	1 021	554	170	716	686	<b>6 909</b>
<b>Traditional dwelling/hut/structure made of traditional materials</b>										
2002	604	53	*	439	165	58	*	15	*	<b>1 344</b>
2003	569	48	*	534	158	57	*	26	*	<b>1 398</b>
2004	735	51	11	566	142	48	*	13	-	<b>1 568</b>
2005	662	40	*	569	126	55	*	32	*	<b>1 496</b>
<b>Flat/apartment in a block of flats</b>										
2002	43	22	242	172	*	30	*	14	125	<b>658</b>
2003	24	18	215	184	*	30	*	15	115	<b>606</b>
2004	19	26	274	191	*	26	*	20	130	<b>699</b>
2005	43	13	254	177	*	*	*	25	99	<b>627</b>



## 15.1 Households by type of dwelling and province, 2002-2005 (thousands) (cont.)

Type of dwelling	Eastern Cape	Free State	Gauteng	KwaZulu-Natal	Limpopo	Mpumalanga	Northern Cape	North West	Western Cape	South Africa
<b>Town/cluster/semi-duplex/triplex</b>										
2002	19	*	125	34	*	*	*	*	88	281
2003	39	*	162	93	*	*	12	*	145	467
2004	44	*	189	78	*	*	*	-	140	464
2005	43	*	122	50	*	*	*	*	148	388
<b>Unit in retirement village</b>										
2002	*	-	*	*	*	*	-	*	*	14
2003	*	*	*	*	*	*	*	*	*	20
2004	*	-	*	*	*	*	*	*	*	14
2005	*	*	13	*	-	-	-	-	*	20

## 15.1 Households by type of dwelling and province, 2002-2005 (thousands) (cont.)

Type of dwelling	Eastern Cape	Free State	Gauteng	KwaZulu-Natal	Limpopo	Mpumalanga	Northern Cape	North West	Western Cape	South Africa
<b>House/flat/room in backyard</b>										
2002	142	12	125	77	*	*	*	*	14	401
2003	68	*	153	45	*	*	*	*	11	299
2004	29	*	140	59	*	*	*	*	11	265
2005	28	24	270	58	*	16	*	19	15	439
<b>Informal dwelling/shack in backyard</b>										
2002	25	21	179	75	*	19	*	15	54	400
2003	24	18	181	28	*	24	*	19	18	317
2004	26	74	198	52	24	37	*	18	30	460
2005	21	41	269	48	24	18	11	45	63	539
<b>Informal dwelling/shack not in backyard</b>										
2002	133	97	282	173	55	87	12	105	118	1 062
2004	142	112	355	174	58	75	17	74	183	1 189
2003	110	41	331	166	26	55	*	68	110	917
2005	133	116	429	315	51	98	20	168	159	1 487

## 15.1 Households by type of dwelling and province, 2002-2005 (thousands) (cont.)

Type of dwelling	Eastern Cape	Free State	Gauteng	KwaZulu-Natal	Limpopo	Mpumalanga	Northern Cape	North West	Western Cape	South Africa
<b>Room/flatlet not in backyard</b>										
2002	15	*	48	118	48	52	*	59	31	378
2003	18	*	54	114	57	68	*	129	37	490
2004	37	25	35	164	61	66	*	116	59	563
2005	42	18	90	96	105	36	21	25	62	495
<b>Total</b>										
2002	1 681	795	2 475	2 189	1 222	768	236	975	1 139	11 479
2003	1 682	822	2 712	2 328	1 248	813	235	989	1 212	12 041
2004	1 651	844	2 747	2 380	1 283	805	236	1 022	1 228	12 194
2005	1 732	858	2 983	2 457	1 345	793	243	1 033	1 283	12 726

Source: Stats SA, *General household survey* (Statistical release P0318)

\* For all values of 10 000 or lower the sample size is too small for reliable estimates.

Totals include other and unspecified type of dwelling.

## 15.2 Households by energy source for cooking by province, 2002-2005 (thousands)

Energy source for cooking	Eastern Cape	Free State	Gauteng	KwaZulu-Natal	Limpopo	Mpumalanga	Northern Cape	North West	Western Cape	South Africa
<b>Electricity from mains</b>										
2002	453	443	2 046	1 235	357	348	147	440	899	6 370
2003	508	477	2 233	1 318	362	406	155	499	980	6 937
2004	487	486	2 336	1 412	375	401	161	530	1 046	7 234
2005	644	527	2 408	1 519	452	370	169	591	1 119	7 800
<b>Gas</b>										
2002	46	23	22	41	*	11	15	28	51	247
2003	42	14	17	37	*	*	*	19	33	186
2004	47	15	25	47	*	*	*	17	23	202
2005	53	25	16	52	14	*	*	25	34	235
<b>Paraffin</b>										
2002	499	167	311	340	95	95	34	207	116	1 865
2003	466	170	356	338	101	94	33	213	149	1 921
2004	479	165	303	326	112	99	27	217	116	1 845
2005	527	169	474	337	109	129	37	259	105	2 145

## 15.2 Households by energy source for cooking by province, 2002-2005 (thousands) (cont.)

Energy source for cooking	Eastern Cape	Free State	Gauteng	KwaZulu-Natal	Limpopo	Mpumalanga	Northern Cape	North West	Western Cape	South Africa
<b>Wood</b>										
2002	662	72	24	521	744	160	35	198	63	2 479
2003	642	67	31	585	760	161	33	179	46	2 506
2004	615	66	25	546	766	154	35	180	34	2 420
2005	485	45	14	506	748	143	19	140	18	2 117
<b>Coal</b>										
2002	*	59	66	42	11	149	*	14	-	344
2003	*	56	65	35	14	142	*	13	*	329
2004	*	56	54	33	17	134	*	*	*	307
2005	*	45	66	32	21	131	*	*	*	308
<b>Total</b>										
2002	1 681	795	2 475	2 189	1 222	768	236	975	1 139	11 479
2003	1 682	822	2 712	2 328	1 248	813	235	989	1 212	12 041
2004	1 651	844	2 747	2 380	1 283	805	236	1 022	1 228	12 194
2005	1 732	858	2 983	2 457	1 345	793	243	1 033	1 283	12 726

Source: Stats SA, *General household survey* (Statistical release P0318)

\* For all values of 10 000 or lower the sample size is too small for reliable estimates.

Totals include none, other and unspecified energy source.

## 15.3 Households by energy source for heating by province, 2002-2005 (thousands) (cont.)

Energy source for heating	Eastern Cape	Free State	Gauteng	KwaZulu-Natal	Limpopo	Mpumalanga	Northern Cape	North West	Western Cape	South Africa
<b>Electricity from mains</b>										
2002	345	333	1 952	1 099	333	290	118	411	777	5 657
2003	357	363	2 124	1 190	342	356	129	431	804	6 095
2004	262	346	2 184	1 218	343	329	130	408	834	6 054
2005	351	360	2 198	1 432	425	280	143	431	768	6 387
<b>Gas</b>										
2002	*	12	12	21	*	*	*	*	*	79
2003	12	11	11	22	*	*	*	*	*	77
2004	*	18	35	21	*	*	*	*	*	107
2005	*	18	15	14	*	*	*	*	16	91
<b>Paraffin</b>										
2002	425	152	172	200	51	30	25	85	144	1 284
2003	420	147	184	170	51	32	24	68	166	1 262
2004	478	170	181	129	66	26	17	89	133	1 291
2005	523	178	248	192	50	45	22	103	219	1 579

## 15.3 Households by energy source for heating by province, 2002-2005 (thousands) (cont.)

Energy source for heating	Eastern Cape	Free State	Gauteng	KwaZulu-Natal	Limpopo	Mpumalanga	Northern Cape	North West	Western Cape	South Africa
<b>Wood</b>										
2002	812	129	54	579	736	181	62	300	131	2 984
2003	804	109	83	634	768	157	61	270	129	3 016
2004	770	124	51	648	757	179	64	281	125	3 000
2005	643	93	51	596	765	159	40	213	54	2 613
<b>Coal</b>										
2002	*	104	162	56	14	180	*	41	*	570
2003	*	106	178	44	21	159	*	44	*	560
2004	*	106	166	47	25	177	*	57	*	590
2005	*	90	192	52	27	165	*	18	*	557
<b>Total</b>										
2002	1 681	795	2 475	2 189	1 222	768	236	975	1 139	11 479
2003	1 682	822	2 712	2 328	1 248	813	235	989	1 212	12 041
2004	1 651	844	2 747	2 380	1 283	805	236	1 022	1 228	12 194
2005	1 732	858	2 983	2 457	1 345	793	243	1 033	1 283	12 726

Source: Stats SA, *General household survey* (Statistical release P0318)

\* For all values of 10 000 or lower the sample size is too small for reliable estimates.

Totals include none, other and unspecified energy source.

## 15.4 Households by energy source for lighting by province, 2002-2005 (thousands)

Energy source for lighting	Eastern Cape	Free State	Gauteng	KwaZulu-Natal	Limpopo	Mpumalanga	Northern Cape	North West	Western Cape	South Africa
<b>Electricity from mains</b>										
2002	859	669	2 192	1 501	879	588	184	791	1 001	<b>8 665</b>
2003	919	704	2 393	1 647	933	651	188	851	1 083	<b>9 368</b>
2004	945	739	2 469	1 714	1 000	662	193	918	1 133	<b>9 773</b>
2005	1 123	750	2 522	1 769	1 103	645	212	1 103	1 209	<b>10 203</b>
<b>Gas</b>										
2002	*	*	*	*	*	*	*	*	*	<b>20</b>
2003	*	*	*	*	*	*	*	-	*	<b>*</b>
2004	*	*	*	*	*	-	*	-	*	<b>19</b>
2005	*	*	-	-	-	*	*	*	*	<b>*</b>
<b>Paraffin</b>										
2002	365	18	60	40	85	31	*	19	60	<b>684</b>
2003	329	20	61	34	74	14	*	14	32	<b>584</b>
2004	317	17	48	20	63	15	*	*	29	<b>521</b>
2005	274	20	35	43	37	22	*	19	27	<b>482</b>



## 15.4 Households by energy source for lighting by province, 2002-2005 (thousands) (cont.)

Energy source for lightning	Eastern Cape	Free State	Gauteng	KwaZulu-Natal	Limpopo	Mpumalanga	Northern Cape	North West	Western Cape	South Africa
<b>Candles</b>										
2002	437	102	216	638	252	147	40	164	74	2 071
2003	417	94	254	638	233	146	37	124	95	2 038
2004	371	87	224	629	213	125	32	93	58	1 832
2005	327	86	423	634	195	123	25	140	40	1 993
<b>Solar energy</b>										
2002	*	*	-	*	*	-	*	-	*	12
2003	*	*	-	*	*	-	*	*	*	17
2004	*	*	-	*	*	*	*	*	-	20
2005	*	*	-	*	*	-	*	*	*	22
<b>Total</b>										
2002	1 681	795	2 475	2 189	1 222	768	236	975	1 139	11 479
2003	1 682	822	2 712	2 328	1 248	813	235	989	1 212	12 041
2004	1 651	844	2 747	2 380	1 283	805	236	1 022	1 228	12 194
2005	1 732	858	2 983	2 457	1 345	793	243	1 033	1 283	12 726

Source: Stats SA, *General household survey* (Statistical release P0318)

\* For all values of 10 000 or lower the sample size is too small for reliable estimates.

Totals include other and unspecified energy source.

## 15.5 Households by energy source for cooking by population group, 2002-2005 (thousands)

Energy source for cooking	Black African	Other <sup>1</sup>	Total
<b>Electricity from mains</b>			
2002	3 854	2 516	6 370
2003	4 314	2 624	6 937
2004	4 532	2 702	7 234
2005	5 029	2 754	7 800
<b>Gas</b>			
2002	188	59	247
2003	140	46	186
2004	162	40	202
2005	193	42	235
<b>Paraffin</b>			
2002	1 807	57	1 865
2003	1 853	68	1 921
2004	1 802	43	1 845
2005	2 099	46	2 145
<b>Wood</b>			
2002	2 386	93	2 479
2003	2 423	82	2 506
2004	2 350	70	2 420
2005	2 079	38	2 117

## 15.5 Households by energy source for cooking by population group, 2002-2005 (thousands) (cont.)

Energy source for cooking	Black African	Other <sup>1</sup>	Total
<b>Coal</b>			
2002	339	*	344
2003	327	*	329
2004	303	*	307
2005	303	*	308
<b>Animal dung</b>			
2002	36	*	36
2003	46	*	48
2004	45	*	45
2005	43	-	- 43
<b>Total</b>			
2002	8 736	2743	11 479
2003	9 210	2831	12 041
2004	9 325	2869	12 194
2005	9 809	2901	12 726

Source: Stats SA, *General household survey* (Statistical release P0318)

<sup>1</sup>Other includes coloured, Indian or Asian, white and unspecified population groups. These groups are aggregated due to the small sample size.

\* For all values of 10 000 or lower the sample size is too small for reliable estimates.

Totals of energy source include other and unspecified.

## 15.6 Households by energy source for heating by population group, 2002-2005 (thousands)

Energy source for heating	Black African	Other <sup>1</sup>	Total
<b>Electricity from mains</b>			
2002	3 295	2 362	<b>5 657</b>
2003	3 635	2 460	<b>6 095</b>
2004	3 612	2 443	<b>6 054</b>
2005	3 938	2 433	<b>6 387</b>
<b>Gas</b>			
2002	48	31	<b>79</b>
2003	48	30	<b>77</b>
2004	66	41	<b>107</b>
2005	62	29	<b>91</b>
<b>Paraffin</b>			
2002	1 243	41	<b>1 284</b>
2003	1 222	40	<b>1 262</b>
2004	1 251	39	<b>1 291</b>
2005	1 530	49	<b>1 579</b>

## 15.6 Households by energy source for heating by population group, 2002-2005 (thousands) (cont.)

Energy source for heating	Black African	Other <sup>1</sup>	Total
<b>Wood</b>			
2002	2 798	186	<b>2 984</b>
2003	2 844	172	<b>3 016</b>
2004	2 833	167	<b>3 000</b>
2005	2 523	90	<b>2 613</b>
<b>Coal</b>			
2002	555	16	<b>570</b>
2003	550	*	<b>560</b>
2004	573	16	<b>590</b>
2005	543	13	<b>557</b>
<b>Total</b>			
2002	8 736	2 743	<b>11 479</b>
2003	9 210	2 831	<b>12 041</b>
2004	9 325	2 869	<b>12 194</b>
2005	9 809	2 901	<b>12 726</b>

Source: Stats SA, *General household survey* (Statistical release P0318)

<sup>1</sup>Other includes coloured, Indian or Asian, white and unspecified population groups. These groups are aggregated due to the small sample size.

\* For all values of 10 000 or lower the sample size is too small for reliable estimates.

Totals of energy source include other and unspecified.

## 15.7 Households by energy source for lighting by population group, 2002-2005 (thousands)

Energy source for lighting	Black African	Other <sup>1</sup>	Total
<b>Electricity from mains</b>			
2002	6 059	2 606	8 665
2003	6 660	2 707	9 368
2004	7 005	2 768	9 773
2005	7 358	2 829	10 203
<b>Gas</b>			
2002	18	*	20
2003	*	*	*
2004	17	*	19
2005	*	*	*
<b>Paraffin</b>			
2002	657	27	684
2003	560	24	584
2004	504	17	521
2005	469	13	482

## 15.7 Households by energy source for lighting by population group, 2002-2005 (thousands) (cont.)

Energy source for lighting	Black African	Other <sup>1</sup>	Total
<b>Candles</b>			
2002	1 971	100	2 071
2003	1 945	92	2 038
2004	1 762	70	1 832
2005	1 945	48	1 993
<b>Solar energy</b>			
2002	*	*	12
2003	15	*	17
2004	16	*	20
2005	21	*	22
<b>Total</b>			
2002	8 736	2 743	11 479
2003	9 210	2 831	12 041
2004	9 325	2 869	12 194
2005	9 809	2 901	12 726

Source: Stats SA, *General household survey* (Statistical release P0318)

<sup>1</sup>Other includes coloured, Indian or Asian, white and unspecified population groups. These groups are aggregated due to the small sample size.

\* For all values of 10 000 or lower the sample size is too small for reliable estimates.

Totals of energy source include other and unspecified.

## 15.8 Households by main source of water by province, 2002-2005 (thousands)

Main source of water	Eastern Cape	Free State	Gauteng	KwaZulu-Natal	Limpopo	Mpumalanga	Northern Cape	North West	Western Cape	South Africa
<b>Piped (tap) water in dwelling</b>										
2002	362	264	1 436	806	131	217	101	220	862	<b>4 398</b>
2003	343	288	1 610	820	139	246	106	214	887	<b>4 653</b>
2004	340	319	1 614	830	129	221	115	204	952	<b>4 723</b>
2005	430	314	1 588	935	152	204	110	256	938	<b>4 926</b>
<b>Piped (tap) water on site or in yard</b>										
2002	231	388	837	425	365	325	107	336	175	<b>3 189</b>
2003	264	404	886	542	350	328	102	383	193	<b>3 452</b>
2004	254	404	915	565	366	357	96	411	183	<b>3 551</b>
2005	291	447	1 069	591	337	328	101	369	242	<b>3 775</b>
<b>Neighbour's tap</b>										
2002	23	18	35	81	69	37	*	35	*	<b>306</b>
2003	23	16	32	82	87	36	*	31	*	<b>317</b>
2004	16	18	33	49	83	39	*	39	*	<b>286</b>
2005	26	15	33	63	75	41	*	29	*	<b>287</b>



## 15.8 Households by main source of water by province, 2002-2005 (thousands) (cont.)

Main source of water	Eastern Cape	Free State	Gauteng	KwaZulu-Natal	Limpopo	Mpumalanga	Northern Cape	North West	Western Cape	South Africa
<b>Rain-water tank on site</b>										
2002	48	*	*	*	*	*	*	*	*	69
2003	32	*	*	*	*	*	*	-	*	51
2004	19	*	-	13	*	*	*	*	*	41
2005	26	*	*	*	*	*	*	*	*	34
<b>Public tap</b>										
2002	312	88	131	330	332	116	*	243	82	1 640
2003	352	89	153	357	406	135	13	265	112	1 882
2004	404	59	151	412	382	105	*	256	75	1 851
2005	411	56	235	424	483	133	21	255	81	2 101

## 15.8 Households by main source of water by province, 2002-2005 (thousands) (cont.)

Main source of water	Eastern Cape	Free State	Gauteng	KwaZulu-Natal	Limpopo	Mpumalanga	Northern Cape	North West	Western Cape	South Africa
<b>Water-carrier/tanker</b>										
2002	15	*	*	15	*	12	*	*	*	76
2003	*	*	*	25	*	*	*	12	*	74
2004	*	*	*	24	*	14	*	12	*	81
2005	*	*	27	28	19	19	*	20	*	128
<b>Borehole on site or communal</b>										
2002	34	22	22	150	129	32	*	112	*	512
2003	23	15	*	139	129	23	*	64	*	408
2004	38	16	*	178	88	18	*	32	*	383
2005	21	15	*	130	86	20	*	39	*	320
<b>Dam/pool/stagnant water</b>										
2002	33	*	-	30	17	*	*	*	*	93
2003	43	*	-	20	*	*	*	*	*	90
2004	30	*	-	21	*	*	*	*	*	72
2005	16	-	-	12	*	*	*	*	*	42

## 15.8 Households by main source of water by province, 2002-2005 (thousands) (cont.)

Main source of water	Eastern Cape	Free State	Gauteng	KwaZulu-Natal	Limpopo	Mpumalanga	Northern Cape	North West	Western Cape	South Africa
<b>Spring</b>										
2002	208	*	-	32	*	*	-	*	*	253
2003	244	*	-	46	12	*	*	-	*	309
2004	173	*	-	35	29	*	-	*	-	242
2005	244	*	-	26	*	*	-	-	-	273
<b>Total</b>										
2002	1 681	795	2 475	2 189	1 222	768	236	975	1 139	11 479
2003	1 682	822	2 712	2 328	1 248	813	235	989	1 212	12 041
2004	1 651	844	2 747	2 380	1 283	805	236	1 022	1 228	12 194
2005	1 732	858	2 983	2 457	1 345	793	243	1 033	1 283	12 726

Source: Stats SA, *General household survey* (Statistical release P0318)

\* For all values of 10 000 or lower the sample size is too small for reliable estimates.

Totals of water source include other and unspecified.

### 15.9 Households with and without a telephone facility by population group and gender of the household head, 2002-2005 (thousands)

Population group and gender	Whether the household has a telephone in dwelling and/or a cellphone											
	Yes				No				Total			
	2002	2003	2004	2005	2002	2003	2004	2005	2002	2003	2004	2005
<b>Black African</b>												
Male	1 820	2 067	2 608	3 343	3 432	3 381	2 834	2 424	5 252	5 448	5 442	5 772
Female	1 103	1 321	1 706	2 360	2 378	2 441	2 177	1 672	3 480	3 762	3 883	4 035
<b>Total</b>	2 922	3 387	4 314	5 704	5 814	5 822	5 011	4 097	8 736	9 210	9 325	9 809
<b>Coloured</b>												
Male	340	369	390	490	307	281	259	190	647	650	650	679
Female	119	147	177	184	139	144	127	118	258	292	304	303
<b>Total</b>	459	516	567	674	446	426	386	308	905	942	953	983
<b>Indian or Asian</b>												
Male	202	215	231	225	28	40	34	24	230	254	265	250
Female	43	42	52	52	*	15	11	14	52	57	63	66
<b>Total</b>	245	256	283	277	37	54	46	38	282	311	328	315

### 15.9 Households with and without a telephone facility by population group and gender of the household head, 2002-2005 (thousands) (cont.)

Population group and gender	Whether the household has a telephone in dwelling and/or a cellphone											
	Yes				No				Total			
	2002	2003	2004	2005	2002	2003	2004	2005	2002	2003	2004	2005
<b>White</b>												
Male	1 204	1 201	1 245	1 267	59	86	60	30	1 263	1 286	1 305	1 303
Female	255	245	247	285	17	24	24	13	271	269	271	299
<b>Total</b>	1 459	1 446	1 492	1 552	76	110	84	43	1 534	1 556	1 576	1 603
<b>All population groups</b>												
Male	3 573	3 857	4 480	5 337	3 829	3 790	3 190	2 669	7 403	7 647	7 669	8 018
Female	1 523	1 757	2 183	2 885	2 544	2 625	2 341	1 817	4 066	4 383	4 525	4 707
<b>Total</b>	5 099	5 619	6 663	8 223	6 380	6 422	5 531	4 486	11 479	12 041	12 194	12 726

Source: Stats SA, *General household survey* (Statistical release P0318)

\* For all values of 10 000 or lower the sample size is too small for reliable estimates.

Totals include other and unspecified population group and gender.

### 15.10 Households by sanitation facility and population group of the household head, 2002-2005 (thousands)

Sanitation facility	Population group of household head				Total
	Black African	Coloured	Indian or Asian	White	
<b>Flush or chemical toilet</b>					
2002	3 743	760	277	1 531	6 329
2003	4 153	789	309	1 552	6 817
2004	4 242	829	325	1 573	6 978
2005	4 639	903	304	1 593	7 456
<b>Pit latrine with ventilation pipe</b>					
2002	513	20	*	-	535
2003	650	17	-	*	671
2004	890	23	*	-	914
2005	941	17	*	*	961
<b>Pit latrine without ventilation</b>					
2002	3 038	44	*	*	3 088
2003	3 070	43	*	*	3 120
2004	2 918	33	*	*	2 954
2005	2 965	25	*	*	2 999

### 15.10 Households by sanitation facility and population group of the household head, 2002-2005 (thousands) (cont.)

Sanitation facility	Population group of household head				Total
	Black African	Coloured	Indian or Asian	White	
<b>Bucket toilet</b>					
2002	250	48	*	-	299
2003	216	45	-	*	261
2004	215	33	*	*	249
2005	274	19	-	-	293
<b>Total</b>					
2002	8 736	905	282	1 534	11 479
2003	9 210	942	311	1 556	12 041
2004	9 325	953	328	1 576	12 194
2005	9 809	983	315	1 603	12 726

Source: Stats SA, *General household survey* (Statistical release P0318)

\* For all values of 10 000 or lower the sample size is too small for reliable estimates.

Totals include none and unspecified sanitation facilities.

### 15.11 Households by type of refuse removal by population group of the household head, 2002-2005 (thousands)

Refuse removal	Population group of household head				Total
	Black African	Coloured	Indian or Asian	White	
<b>Removed by local authority at least once a week</b>					
2002	3 725	703	269	1 359	6 074
2003	4 236	755	300	1 371	6 677
2004	4 258	769	318	1 403	6 755
2005	4 830	870	304	1 481	7 503
<b>Removed by local authority less often than once a week</b>					
2002	208	12	*	17	240
2003	121	*	*	29	164
2004	174	*	*	25	211
2005	115	18	*	13	149
<b>Removed by community members</b>					
2002	57	17	*	*	86
2003	45	12	*	*	63
2004	33	23	*	*	60
2005	27	*	-	*	43



### 15.11 Households by type of refuse removal by population group of the household head, 2002-2005 (thousands) (cont.)

Refuse removal	Population group of household head				Total
	Black African	Coloured	Indian or Asian	White	
<b>Communal refuse dump/communal container</b>					
2002	310	30	*	15	357
2003	288	61	-	24	373
2004	359	57	*	14	431
2005	406	22	-	*	433
<b>Own refuse dump</b>					
2002	3 735	106	*	101	3 949
2003	4 145	82	*	109	4 348
2004	4 055	72	*	107	4 238
2005	3 923	40	*	78	4 048
<b>Total</b>					
2002	8 736	905	282	1 534	11 479
2003	9 210	942	311	1 556	12 041
2004	9 325	953	328	1 576	12 194
2005	9 809	983	315	1 603	12 726

Source: Stats SA, *General household survey* (Statistical release P0318)

\* For all values of 10 000 or lower the sample size is too small for reliable estimates.

Totals include other and unspecified population group of the head of the household

## 15.12 Total number of households receiving basic water services from municipalities: South Africa

Province	Number of households <sup>1</sup> receiving basic water services (2003)	Number of households receiving basic water services (2004)
Western Cape	1 026 538	1 082 959
Eastern Cape	765 943	993 926
Northern Cape	174 718	190 899
Free State	538 637	696 466
KwaZulu-Natal	1 169 448	1 389 829
North West	512 901	544 988
Gauteng	2 086 345	2 147 120
Mpumalanga	468 875	529 313
Limpopo	667 649	871 783
<b>Total</b>	<b>7 411 054</b>	<b>8 447 283</b>

Source: Stats SA, *Non-financial census of municipalities* (Statistical release P9115)

<sup>1</sup> Households refer to billing units or delivery points.

### 15.13 Total number of households receiving basic electricity services from municipalities: South Africa

Province	Number of households <sup>1</sup> receiving basic electricity services (2003)	Number of households receiving basic electricity services (2004)
Western Cape	956 148	1 010 620
Eastern Cape	442 829	513 979
Northern Cape	103 727	125 843
Free State	361 802	403 114
KwaZulu-Natal	782 225	825 570
North West	126 724	152 382
Gauteng	1 055 888	1 238 414
Mpumalanga	307 263	332 284
Limpopo	91 043	104 485
<b>Total</b>	<b>4 227 649</b>	<b>4 706 691</b>

Source: Stats SA, *Non-financial census of municipalities* (Statistical release P9115)

<sup>1</sup> Households refer to billing units or delivery points.

## 15.14 Households receiving water services from municipalities: South Africa

Province	Number of households <sup>1</sup> receiving basic water services (2003)	Number of households <sup>1</sup> receiving free basic water services (2003)	%	Number of households receiving basic water services (2004)	Number of households receiving free basic water services (2004)	%
Western Cape	1 026 538	609 003	59,3	1 082 959	993 084	91,7
Eastern Cape	765 943	437 274	57,1	993 926	674 224	67,8
Northern Cape	174 718	128 949	73,8	190 899	105 047	55,0
Free State	548 637	491 158	91,2	696 466	509 926	73,2
KwaZulu-Natal	1 169 448	709 808	60,7	1 389 829	808 527	58,2
North West	512 901	419 185	81,7	544 988	408 056	74,9
Gauteng	2 086 345	1 706 174	81,8	2 147 120	2 085 978	97,2
Mpumalanga	468 875	330 431	70,5	529 313	386 842	73,1
Limpopo	667 649	370 791	55,5	871 783	539 640	61,9
<b>Total</b>	<b>7 411 054</b>	<b>5 202 773</b>	<b>70,2</b>	<b>8 447 283</b>	<b>6 511 324</b>	<b>77,1</b>

Source: Stats SA, *Non-financial census of municipalities* (Statistical release P9115)

<sup>1</sup> Households refer to billing units or delivery points.

## 15.15 Households receiving electricity services from municipalities: South Africa

Province	Number of households <sup>1</sup> receiving basic electricity services (2003)	Number of households <sup>1</sup> receiving free basic electricity services (2003)	%	Number of households receiving basic electricity services (2004)	Number of households receiving free basic electricity services (2004)	%
Western Cape	956 148	517 689	54,1	1 010 620	903 063	89,4
Eastern Cape	442 829	198 492	44,8	513 979	250 041	48,6
Northern Cape	103 727	46 221	44,6	125 843	48 221	38,3
Free State	361 802	282 280	78,0	403 114	337 928	83,8
KwaZulu-Natal	782 225	22 075	2,8	825 570	47 695	5,8
North West	126 724	29 906	23,6	152 382	73 735	48,4
Gauteng	1 055 888	886 650	84,0	1 238 414	1 123 346	90,7
Mpumalanga	307 263	166 085	54,1	332 284	199 060	59,9
Limpopo	91 043	42 153	46,3	104 485	56 973	54,5
<b>Total</b>	<b>4 227 649</b>	<b>2 191 551</b>	<b>51,8</b>	<b>4 706 691</b>	<b>3 040 062</b>	<b>64,6</b>

Source: Stats SA, *Non-financial census of municipalities* (Statistical release P9115)

<sup>1</sup> Households refer to billing units or delivery points.



Debts:

16

# 16

## Debts:

16.1 Liquidations and insolvencies, 2001-2005 (numbers)

153



## 16.1 Liquidations and insolvencies, 2001-2005 (numbers)

	2001	2002	2003	2004	2005
<b>Total liquidations</b>	<b>4 156</b>	<b>3 911</b>	<b>4 086</b>	<b>3 510</b>	<b>3 225</b>
Compulsory liquidations	1 284	825	857	564	524
Voluntary liquidations	2 872	3 086	3 229	2 646	2 701
<b>Companies</b>	<b>1 671</b>	<b>1 858</b>	<b>2 110</b>	<b>1 532</b>	<b>1 604</b>
Compulsory liquidations	443	339	423	223	275
Voluntary liquidations	1 228	1 519	1 687	1 309	1 329
<b>Close corporations</b>	<b>2 485</b>	<b>2 053</b>	<b>1 976</b>	<b>1 978</b>	<b>1 621</b>
Compulsory liquidations	841	486	434	341	249
Voluntary liquidations	1 644	1 567	1 542	1 637	1 372
<b>Total insolvencies</b>	<b>3 935</b>	<b>3 037</b>	<b>2 631</b>	<b>1 917</b>	<b>1 441</b>

Source: Stats SA, *Statistics of liquidations and insolvencies* (Statistical release P0043)

Liquidations refer to corporate institutions such as companies and close corporations, while insolvencies refer to individuals.



National accounts:

17

## National accounts:

17.1	Gross domestic product (GDP) at constant 2000 prices, 2001-2005	157
17.2	Gross domestic product (GDP) at current prices, 2001-2005	157
17.3	Annualised percentage change of the GDP at market prices, 2005	157
17.4	Gross domestic product (GDP) by industry at constant 2000 prices, 2001-2005 (R millions)	158
17.5	Gross domestic product (GDP) by industry at current prices, 2001-2005 (R millions)	159

**17.1 Gross domestic product (GDP) at constant 2000 prices, 2001-2005**

	2001	2002	2003	2004	2005 <sup>1</sup>
GDP at constant 2000 market prices (R millions)	947 373	982 327	1 011 556	1 056 771	1 108 774
Percentage change relative to previous year	2,7	3,7	3,0	4,5	4,9

Source: Stats SA, *Gross domestic product: Annual estimates* (Statistical release P0441)

<sup>1</sup>Sum of four quarters.

**17.2 Gross domestic product (GDP) at current prices, 2001-2005**

	2001	2002	2003	2004	2005 <sup>1</sup>
GDP at current market prices (R millions)	1 019 898	1 168 777	1 257 025	1 386 658	1 523 254

Source: Stats SA, *Gross domestic product: Annual estimates* (Statistical release P0441)

<sup>1</sup>Sum of four quarters.

**17.3 Annualised percentage change of the GDP at market prices, 2005**

	First quarter	Second quarter	Third quarter	Fourth quarter
%	4,6	5,4	4,2	3,3

Source: Stats SA, *Gross domestic product: Annual estimates* (Statistical release P0441)

## 17.4 Gross domestic product (GDP) by industry at constant 2000 prices, 2001-2005 (R millions)

	2001	2002	2003	2004	2005 <sup>1</sup>
Agriculture, forestry and fishing	26 558	28 292	27 700	27 223	28 684
Mining and quarrying	63 325	63 927	66 502	68 356	70 508
Manufacturing	164 131	168 729	166 405	174 036	181 137
Electricity, gas and water	21 956	22 722	23 151	23 698	24 082
Construction	22 154	23 441	25 053	27 725	30 511
Wholesale and retail trade; hotels and restaurants	125 017	127 870	136 138	143 931	152 712
Transport, storage and communication	85 646	93 390	98 864	103 380	109 188
Finance, real estate and business services	169 015	179 623	187 062	201 170	216 632
General government services	131 914	133 054	134 915	136 376	138 373
Personal services	52 537	53 852	56 073	56 841	58 270
<b>All industries at basic prices</b>	<b>862 253</b>	<b>894 900</b>	<b>921 863</b>	<b>962 736</b>	<b>1 010 097</b>
Taxes less subsidies on products	85 120	87 427	89 693	94 035	98 677
<b>GDP at market prices</b>	<b>947 373</b>	<b>982 327</b>	<b>1 011 556</b>	<b>1 056 771</b>	<b>1 108 774</b>

Source: Stats SA, *Gross domestic product: Annual estimates* (Statistical release P0441)

<sup>1</sup>Sum of four quarters.

## 17.5 Gross domestic product (GDP) by industry at current prices, 2001-2005 (R millions)

	2001	2002	2003	2004	2005 <sup>1</sup>
Agriculture, forestry and fishing	32 588	44 179	40 889	37 946	34 441
Mining and quarrying	77 214	92 113	84 258	87 493	94 322
Manufacturing	176 907	209 605	221 652	236 822	251 596
Electricity and water	23 023	26 046	28 316	29 426	31 029
Construction	22 416	24 119	26 947	29 182	33 400
Wholesale and retail trade; hotels and restaurants	130 387	143 095	157 728	175 570	197 252
Transport, storage and communication	89 511	100 034	110 439	122 298	135 713
Finance, real estate and business services	177 531	204 667	229 013	260 940	285 757
General government services	142 325	157 391	171 995	186 802	204 560
Personal services	56 313	62 631	69 895	76 385	84 882
<b>All industries at basic prices</b>	<b>928 216</b>	<b>1 063 879</b>	<b>1 141 131</b>	<b>1 242 864</b>	<b>1 352 951</b>
Taxes less subsidies on products	91 682	104 898	115 894	143 794	170 303
<b>GDP at market prices</b>	<b>1 019 898</b>	<b>1 168 777</b>	<b>1 257 025</b>	<b>1 386 658</b>	<b>1 523 054</b>

Source: Stats SA, *Gross domestic product: Annual estimates* (Statistical release P0441)

<sup>1</sup>Sum of four quarters.





Government finances:

18

## Government finances:

- |      |   |     |
|------|---|-----|
| 18.1 | Actual capital expenditure of the public sector, 2000-2004 (R billions)   | 163 |
| 18.2 | Expenditure by universities and technikons, and type of expenditure, 2000-2004 (R millions)   | 164 |
| 18.3 | The expenditure (functionally classified) of the provincial governments for the financial years 1999/2000-2003/04, social security and welfare services (R thousands) | 165 |

## 18.1 Actual capital expenditure of the public sector, 2000-2004 (R billions)

	Expenditure on new construction works					Expenditure on machinery and equipment				
	2000	2001	2002	2003	2004	2000	2001	2002	2003	2004
<b>Type of public sector institution</b>										
National government	1,51	1,71	1,91	3,48	3,22	0,20	0,10	1,34	2,00	1,82
Provincial government	2,33	2,48	3,22	4,96	7,69	0,36	0,26	0,42	0,92	2,74
Extra-budgetary funds	..	0,10	0,07	0,14	0,21	..	0,59	0,56	0,74	0,90
District municipalities	1,83	5,14	4,48	6,90	6,57	0,35	0,89	0,60	0,99	1,14
Local municipalities	5,16	3,99	3,05	5,32	4,64	0,54	0,36	0,31	0,43	0,46
Universities and technikons	0,35	0,36	0,19	0,56	0,38	0,35	0,57	0,57	0,79	0,70
Public corporations	5,88	4,66	6,28	13,78	10,51	10,87	14,44	12,17	7,91	7,65
<b>Total</b>	<b>17,06</b>	<b>18,44</b>	<b>19,20</b>	<b>35,14</b>	<b>33,22</b>	<b>12,67</b>	<b>17,21</b>	<b>15,97</b>	<b>13,78</b>	<b>15,41</b>
	Expenditure on land and existing buildings					Total capital expenditure				
	2000	2001	2002	2003	2004	2000	2001	2002	2003	2004
<b>Type of public sector institution</b>										
National government	0,02	0,15	0,20	0,05	0,00	1,73	1,96	3,45	5,53	5,06
Provincial government	0,01	0,03	0,14	0,50	0,27	2,70	2,77	3,78	6,38	10,71
Extra-budgetary funds	..	0,20	0,14	0,15	0,10	..	0,89	0,77	1,03	1,20
District municipalities	0,07	0,21	0,05	0,24	0,35	2,25	6,24	5,13	8,13	8,06
Local municipalities	0,22	0,16	0,14	0,16	0,15	5,92	4,51	3,50	5,91	5,25
Universities and technikons	0,00	0,06	0,12	0,19	0,22	0,70	0,99	0,88	1,54	1,30
Public corporations	0,19	0,11	0,66	0,43	0,43	16,94	19,21	19,11	22,12	18,59
<b>Total</b>	<b>0,51</b>	<b>0,92</b>	<b>1,45</b>	<b>1,72</b>	<b>1,52</b>	<b>30,24</b>	<b>36,57</b>	<b>36,62</b>	<b>50,64</b>	<b>50,17</b>

Source: Stats SA, *Actual and expected capital expenditure of the public sector* (Statistical release P9101)

## 18.2 Expenditure by universities and technikons, and type of expenditure, 2000-2004 (R millions)

Year	Current expenditure			Capital expenditure			Total expenditure <sup>1</sup>		
	Universities	Technikons	Both	Universities	Technikons	Both	Universities	Technikons	Both
2000	9 670,4	3 124,4	<b>12 794,9</b>	802,5	276,9	<b>1 079,4</b>	10 472,9	3 401,4	<b>13 874,4</b>
2001	10 789,2	3 446,2	<b>14 235,4</b>	848,4	344,1	<b>1 192,5</b>	11 637,6	3 790,3	<b>15 427,9</b>
2002	12 223,9	3 851,5	<b>16 075,4</b>	1 096,9	267,7	<b>1 364,6</b>	13 320,8	4 119,2	<b>17 440,0</b>
2003	14 545,2	4 071,4	<b>18 616,6</b>	1 337,5	289,7	<b>1 627,2</b>	15 882,7	4 361,2	<b>20 244,0</b>
2004	15 420,8	4 386,3	<b>19 807,1</b>	1 096,6	349,4	<b>1 446,0</b>	16 517,4	4 735,7	<b>21 253,2</b>

Source: Stats SA, *Financial statistics of universities and technikons* (Statistical release P9103)

<sup>1</sup>Total expenditure includes amount for research undertaken.

### 18.3 The expenditure (functionally classified) of the provincial governments for the financial years 1999/2000-2003/04, social security and welfare services (R thousands)

Provincial government	General services	Public order and safety	Education	Health	Social security and welfare	Housing and community development	Other	Economic services	Unallocable	Total
<b>Eastern Cape</b>										
1999/00	263 681	59 577	6 665 650	3 448 033	3 856 354	197 325	275 552	792 532	407 729	<b>15 966 433</b>
2000/01	712 214	55 717	7 253 651	3 744 705	4 066 861	635 426	288 123	966 623	438 841	<b>18 162 161</b>
2001/02	395 352	69 523	7 940 155	3 816 189	4 663 952	483 473	334 903	1 554 752	336 306	<b>19 594 605</b>
2002/03	458 978	81 031	9 455 073	4 186 947	6 426 332	713 163	405 109	2 580 274	411 541	<b>24 718 448</b>
2003/04	451 305	85 830	10 483 505	4 932 389	8 444 747	1 138 159	487 690	3 171 786	476 158	<b>29 671 569</b>
<b>Free State</b>										
1999/00	159 622	65 015	2 822 823	1 590 171	1 163 679	114 950	127 810	537 498	83 565	<b>6 665 133</b>
2000/01	145 827	139 961	3 084 448	1 715 096	1 261 180	389 332	94 408	325 337	206 725	<b>7 362 314</b>
2001/02	200 125	158 110	3 243 109	1 890 847	1 483 062	340 583	188 578	498 734	218 957	<b>8 222 105</b>
2002/03	236 013	85 110	3 600 057	2 121 007	2 100 020	353 002	260 738	616 533	338 053	<b>9 710 533</b>
2003/04	273 237	98 962	4 134 319	2 456 565	2 909 898	420 185	311 363	583 232	346 257	<b>11 534 018</b>

### 18.3 The expenditure (functionally classified) of the provincial governments for the financial years 1999/2000-2003/04, social security and welfare services (R thousands) (cont.)

Provincial government	General services	Public order and safety	Education	Health	Social security and welfare	Housing and community development	Other	Economic services	Unallocable	Total
<b>Gauteng</b>										
1999/00	280 495	185 829	6 352 368	5 795 786	2 441 752	124 322	147 496	555 208	210 215	<b>16 093 471</b>
2000/01	323 354	275 890	6 872 717	6 113 693	2 683 057	759 988	174 192	715 883	272 762	<b>18 191 536</b>
2001/02	545 042	194 411	7 351 756	6 754 314	3 042 488	1 120 478	166 997	852 901	267 959	<b>20 296 346</b>
2002/03	793 923	280 604	8 233 527	7 520 441	3 955 439	1 591 957	346 915	1 222 980	527 733	<b>24 473 519</b>
2003/04	788 499	458 495	9 691 526	7 976 145	5 312 760	1 438 229	394 515	1 663 970	615 011	<b>28 339 150</b>
<b>KwaZulu-Natal</b>										
1999/00	441 278	130 747	7 376 801	5 041 242	4 059 806	291 040	297 720	1 025 017	254 578	<b>18 918 229</b>
2000/01	469 660	166 128	8 280 764	5 687 022	4 349 709	993 858	307 307	1 256 548	299 389	<b>21 810 385</b>
2001/02	457 303	165 755	9 483 643	6 735 402	5 049 224	1 113 398	360 347	1 515 643	299 080	<b>25 179 795</b>
2002/03	470 134	210 883	10 631 506	7 202 035	6 873 864	1 169 766	457 789	1 670 486	292 063	<b>28 978 526</b>
2003/04	518 589	224 127	12 217 091	7 858 603	9 162 847	1 220 605	504 121	2 060 198	351 999	<b>34 118 180</b>

### 18.3 The expenditure (functionally classified) of the provincial governments for the financial years 1999/2000-2003/04, social security and welfare services (R thousands) (cont.)

Provincial government	General services	Public order and safety	Education	Health	Social security and welfare	Housing and community development	Other	Economic services	Unallocable	Total
<b>Limpopo</b>										
1999/00	316 518	60 012	5 950 409	2 125 880	2 328 768	173 579	152 794	1 011 523	392 080	<b>12 511 563</b>
2000/01	430 986	74 206	6 530 621	2 404 870	2 641 693	420 957	153 973	1 442 897	427 089	<b>14 527 292</b>
2001/02	633 190	120 918	6 816 321	2 519 895	2 968 775	574 276	224 686	1 428 402	368 229	<b>15 654 692</b>
2002/03	748 591	168 099	7 509 960	3 001 815	4 289 558	472 721	221 551	1 882 159	467 447	<b>18 761 901</b>
2003/04	861 171	200 038	8 317 620	3 545 074	5 442 233	533 667	197 249	2 185 773	487 107	<b>21 769 932</b>
<b>Mpumalanga</b>										
1999/00	471 560	71 051	2 864 325	1 114 822	1 157 251	64 498	117 523	466 670	100 529	<b>6 428 229</b>
2000/01	415 598	66 318	3 016 611	1 118 012	1 320 802	344 781	61 798	566 818	106 392	<b>7 017 130</b>
2001/02	474 110	117 795	3 354 281	1 433 458	1 525 110	436 053	123 712	823 896	137 240	<b>8 425 655</b>
2002/03	290 491	142 878	3 952 702	1 621 576	2 040 077	351 021	254 406	953 096	166 391	<b>9 772 638</b>
2003/04	287 168	158 863	4 565 330	1 916 374	2 691 163	379 508	268 479	1 078 186	196 454	<b>11 541 525</b>

### 18.3 The expenditure (functionally classified) of the provincial governments for the financial years 1999/2000-2003/04, social security and welfare services (R thousands) (cont.)

Provincial government	General services	Public order and safety	Education	Health	Social security and welfare	Housing and community development	Other	Economic services	Unallocable	Total
<b>Northern Cape</b>										
1999/00	106 048	17 118	920 855	419 445	695 661	41 378	32 478	185 316	14 706	<b>2 433 005</b>
2000/01	131 623	25 233	1 000 578	458 653	658 499	137 374	37 092	202 540	3 525	<b>2 655 117</b>
2001/02	178 969	37 932	1 051 093	512 560	705 919	148 473	50 616	246 101	153	<b>2 931 816</b>
2002/03	186 602	46 664	1 193 991	590 796	910 804	150 708	66 289	271 248	51 804	<b>3 468 906</b>
2003/04	199 473	46 604	1 319 046	807 531	1 145 539	211 126	79 094	273 041	69 692	<b>4 151 146</b>
<b>North West</b>										
1999/00	263 901	71 608	3 435 348	1 361 221	1 406 660	264 699	185 486	724 487	346 799	<b>8 060 209</b>
2000/01	252 380	93 480	3 732 513	1 533 756	1 697 367	492 772	162 229	909 679	342 927	<b>9 217 103</b>
2001/02	338 991	114 506	4 000 061	1 671 179	1 972 131	403 320	238 358	876 846	285 787	<b>9 901 179</b>
2002/03	403 746	151 148	4 415 340	1 974 591	2 610 095	424 857	175 453	1 017 009	276 921	<b>11 449 160</b>
2003/04	471 931	186 582	4 888 102	2 215 569	3 451 387	331 895	231 587	1 277 130	309 912	<b>13 364 095</b>



### 18.3 The expenditure (functionally classified) of the provincial governments for the financial years 1999/2000-2003/04, social security and welfare services (R thousands) (cont.)

Provincial government	General services	Public order and safety	Education	Health	Social security and welfare	Housing and community development	Other	Economic services	Unallocable	Total
<b>Western Cape</b>										
1999/00	297 813	47 334	3 909 577	3 137 235	2 236 943	75 824	146 930	422 048	122 877	<b>10 396 581</b>
2000/01	325 817	53 883	4 187 976	3 417 429	2 227 712	398 584	160 220	669 311	72 800	<b>11 513 732</b>
2001/02	305 788	103 671	4 518 121	3 689 869	2 397 568	417 868	178 653	746 228	159 091	<b>12 516 857</b>
2002/03	352 123	118 995	4 946 294	3 947 712	3 151 403	483 592	213 894	1 083 726	211 260	<b>14 508 999</b>
2003/04	405 641	141 187	5 453 418	4 545 809	3 801 880	406 937	227 675	1 157 498	224 585	<b>16 364 630</b>
<b>Total</b>										
1999/00	2 600 916	708 291	40 298 156	24 033 835	19 346 874	1 347 615	1 483 789	5 720 299	1 933 078	<b>97 472 853</b>
2000/01	3 207 459	950 816	43 959 879	26 193 236	20 906 880	4 573 072	1 439 342	7 055 636	2 170 450	<b>110 456 770</b>
2001/02	3 528 870	1 082 621	47 758 540	29 023 713	23 808 229	5 037 922	1 866 850	8 543 503	2 072 802	<b>122 723 050</b>
2002/03	3 940 601	1 285 412	53 938 450	32 166 920	32 357 592	5 710 787	2 402 144	11 297 511	2 743 213	<b>145 842 630</b>
2003/04	4 257 014	1 600 688	61 069 957	36 254 059	42 362 454	6 080 311	2 701 773	13 450 814	3 077 175	<b>170 854 245</b>