

TABLE 1

Laboratory-confirmed *Salmonella* isolates from human sources reported to CDC, with the 20 most frequently reported serotypes listed individually, 2009

Rank	Serotype	Number Reported	Percent
1	Enteritidis	7144	17.5
2	Typhimurium *	6120	15.0
3	Newport	3811	9.3
4	Javiana	1997	4.9
5	Heidelberg	1411	3.5
6	Montevideo	1264	3.1
7	I 4,[5],12:i:-	991	2.4
8	Oranienburg	899	2.2
9	Saintpaul	854	2.1
10	Muenchen	809	2.0
11	Braenderup	720	1.8
12	Infantis	633	1.6
13	Thompson	478	1.2
14	Mississippi	445	1.1
15	Paratyphi B var. L(+) tartrate+	436	1.1
16	Typhi	432	1.1
17	Agona	392	1.0
18	Schwarzengrund	348	0.9
19	Bareilly	284	0.7
20	Hadar	266	0.7
	Sub Total	29734	72.8
	All other serotyped	6339	15.5
	Unknown	3523	8.6
	Partially serotyped	1101	2.7
	Rough, mucoid, and/or nonmotile isolates	131	0.3
	Sub Total	11094	27.2
	Total	40828	100
Notes: ----- Typhimurium includes var. 5- (formerly var. Copenhagen) All serotyped isolates listed in Table 3			

TABLE 1a

Laboratory-confirmed *Salmonella* isolates from human sources reported to CDC: Percent change among the 20 most frequently reported serotypes, 1999-2009

Rank			Serotype	Number Reported			Percent Change		
1999	2004	2009		1999	2004	2009	1999-2004	2004-2009	1999-2009
2	2	1	Enteritidis	5343	5028	7144	-6	42	34
1	1	2	Typhimurium *	8052	6855	6120	-15	-11	-24
3	3	3	Newport	2618	3329	3811	27	14	46
6	4	4	Javiana	1197	1776	1997	48	12	67
4	5	5	Heidelberg	1816	1758	1411	-3	-20	-22
7	6	6	Montevideo	851	874	1264	3	45	49
28	7	7	I 4,[5],12:i:-	138	739	991	436	34	618
8	13	8	Oranienburg	616	495	899	-20	82	46
14	9	9	Saintpaul	472	695	854	47	23	81
5	8	10	Muenchen	1332	739	809	-45	9	-39
11	10	11	Braenderup	529	684	720	29	5	36
10	11	12	Infantis	596	588	633	-1	8	6
9	14	13	Thompson	607	494	478	-19	-3	-21
18	12	14	Mississippi	248	558	445	125	-20	79
16	17	15	Paratyphi B var. L(+) tartrate+	316	354	436	12	23	38
15	18	16	Typhi	352	306	432	-13	41	23
12	16	17	Agona	528	407	392	-23	-4	-26
25	29	18	Schwarzengrund	155	148	348	-5	135	125
23	23	19	Bareilly	171	232	284	36	22	66
13	19	20	Hadar	516	277	266	-46	-4	-48

Note:

* Typhimurium includes var. 5- (formerly var. Copenhagen)

Laboratory-confirmed *Salmonella* isolates from human sources reported to CDC by age group and sex, 2009

Age Group	Sex			Total
	Female	Male	Unknown	
< 1 Year	1885	2247	123	4255
1 to 4	3166	3438	211	6815
5 to 9	1525	1697	77	3299
10 to 19	1814	1974	108	3896
20 to 29	2211	1660	126	3997
30 to 39	1870	1392	85	3347
40 to 49	1969	1538	121	3628
50 to 59	2003	1643	117	3763
60 to 69	1608	1195	73	2876
70 to 79	1244	829	58	2131
80+	1002	564	52	1618
Unknown Age	489	401	313	1203
	20786	18578	1464	40828

FIGURE 1

Laboratory-confirmed *Salmonella* Isolates from human sources reported to CDC by age group and sex, 2009

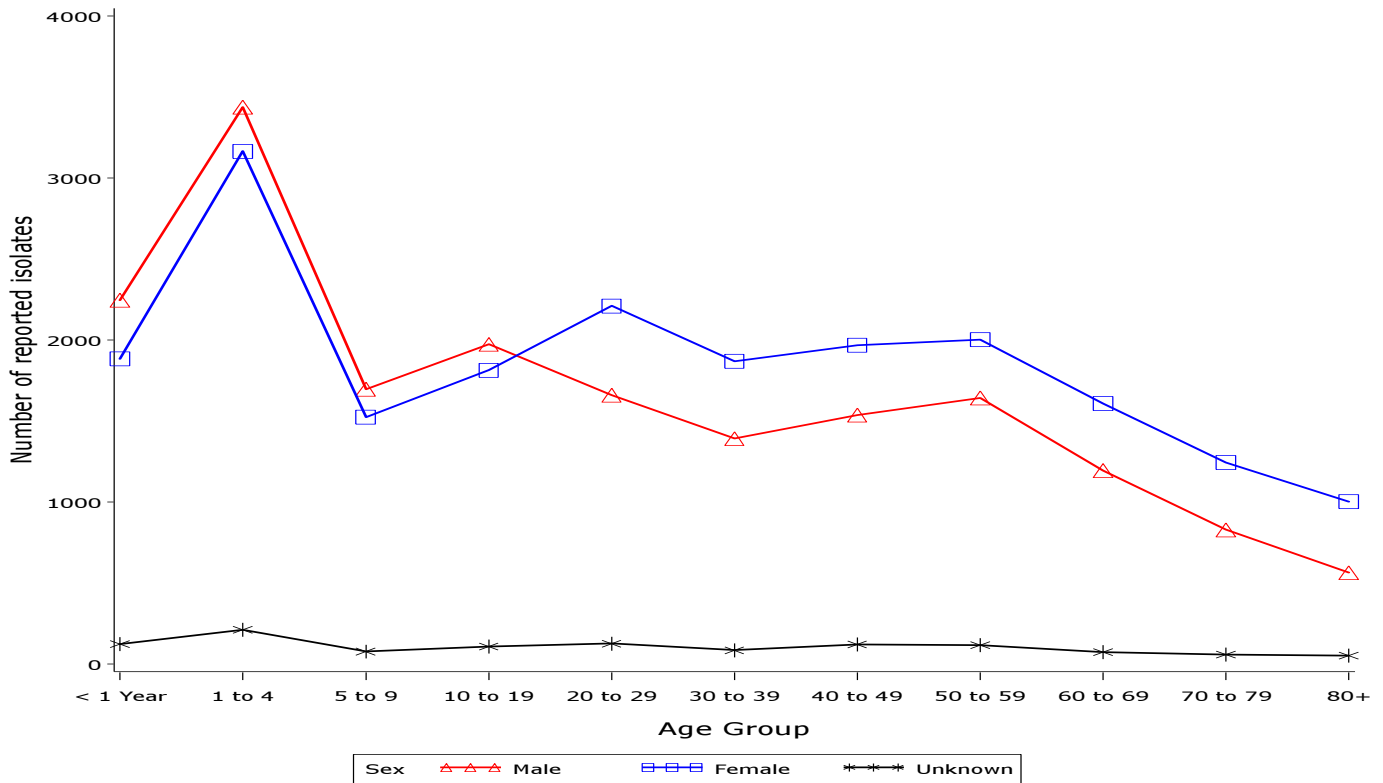


TABLE 3

Laboratory-confirmed *Salmonella* isolates from human sources reported to CDC by serotype and year, 1999-2009

Serotype	1999	2000	2001	2002	2003	2004	2005	2006	2007	2008	2009	Total
Aarhus	6	7	2	7	9	3	5	6	6	6	4	61
Aba		4			1			1		1		7
Abadina				2								2
Abaetetuba	7	5	4	3	1	1		3	3	1	5	33
Aberdeen	4	13	5	3	3	6	6	10	13	6	14	83
Abony	4	1	11	9	9	10	2	8	3	3	3	63
Abortusequi											1	1
Adelaide	95	42	81	66	60	76	71	70	59	72	43	735
Adime					1							1
Aequatoria	1					5	2					8
Aflao	1											1
Africana	6					1						7
Afula						1						1
Agama	2	1	1	5	4	2	8	4	2		7	36
Agbeni	1	13	5	4	7	72	15	15	16	17	15	180
Ago		1						1	4	5	14	25
Agodi				1								1
Agona	528	406	372	340	523	407	369	538	512	652	392	5039
Agoueve	2	2	3	6	2	2	3	3	2	1	3	29
Ahoutoue									1			1
Ahuza		2									1	3
Ajiobo		2		2	1	1		1				7
Alabama	4	1	1	3		3	3	5				20
Alachua	22	20	9	16	10	28	21	18	19	14	24	201
Alagbon						1	3			1		5
Albany	17	18	17	15	17	34	38	36	36	21	28	277
Albert							1				3	4
Albuquerque				1								1
Allandale		1	1			1					2	5
Allerton						1						1
Altona	1	4	3	3		2	1	4	6	6	10	40
Amager	4	7	1	2	3	15	5	4	4	7	5	57
Amager var. 15+						3				2		5
Amherstiana								1				1
Amounderness										1		1
Amoutive								1	2	2	2	7
Amsterdam	6	2	5	7	6	3	2	3	2	2	7	45
Amsterdam var. 15+	5	1	5	3		1	2	1				18
Anatum	157	177	188	217	177	250	197	238	203	221	221	2246

TABLE 3

Laboratory-confirmed *Salmonella* isolates from human sources reported to CDC by serotype and year, 1999-2009

Serotype	1999	2000	2001	2002	2003	2004	2005	2006	2007	2008	2009	Total
Anatum var. 15+	23	8	4	4	10	11	6	16	7	12	6	107
Anatum var. 15+, 34+				1								1
Anecho	2	1		5	2		2	3	9	10		34
Anfo							1	1	2	2	1	7
Annedal			1									1
Antsalova		3		1		1						5
Apapa	2	4	8	10	3	12	7	7	13	7	5	78
Apeyeme	1	1				1	2				2	7
Aqua		2	1		1	2	2	3	1	1	4	17
Aragua		1										1
Arapahoe				1								1
Arechavaleta	3	9	3	6	3	14	4	2	13	9	14	80
Assen	1	1		1			1			1		5
Assinie								4				4
Ati						2						2
Augustenborg			1				1			2	1	5
Austin			1									1
Australia			3									3
Avignon								1				1
Avonmouth				1								1
Azteca	1						1			1		3
Babelsberg		1				2						3
Baguirmi			1									1
Bahrenfeld								1				1
Baildon	77	4	2	14	12	7	33	14	17	9	12	201
Ball			1						1			2
Banalia			1									1
Banana		1	1		3		2	1				8
Bandia						1						1
Bardo	13	20	16	49	42	32	27	29	33	23	22	306
Bareilly	171	182	206	183	240	232	201	256	249	245	284	2449
Bargny								1				1
Barranquilla	1		3	1	3	3	1	5	6	26	2	51
Bassa					1							1
Bassadji			1			1						2
Beaudesert		1			1			3	2	3	3	13
Belem	1				1							2
Benfica	1		1									2
Benin							1	6		1		8

TABLE 3

Laboratory-confirmed *Salmonella* isolates from human sources reported to CDC by serotype and year, 1999-2009

Serotype	1999	2000	2001	2002	2003	2004	2005	2006	2007	2008	2009	Total
Bere			1		1		2	7	7	14	3	35
Bergen	1	2			1			1				5
Berta	143	312	334	300	201	409	209	252	191	197	183	2731
Bietri										1		1
Bijlmer							2					2
Binningen						1						1
Birkenhead		2	2		4	5	2		1	3	4	23
Bispebjerg					1							1
Blegdam	1	2	2	3	2	8	4			1	1	24
Blijdorp					1							1
Blockley	54	28	33	38	67	83	50	61	66	50	55	585
Bobo							1					1
Bochum	1		3		1							5
Bolton		1										1
Bonames		1			1							2
Bonariensis	4	3	6	6	4	3	1	2	4	5	2	40
Bonn		1	2			2		1			1	7
Borbeck		1										1
Bournemouth				1	2	1	2	1	2	1	1	11
Bousso							3	1				4
Bovismorbificans	35	55	83	74	69	110	73	71	47	79	62	758
Bracknell				1								1
Bradford		2	1	2	3	1		1	1		1	12
Braenderup	529	531	396	389	553	684	603	561	589	665	720	6220
Brancaster					1							1
Brandenburg	117	84	106	140	116	80	134	94	73	81	87	1112
Brazil	2				2	2	2	3	3	4	1	19
Brazos	1											1
Brazzaville					1		2	3	1	1	1	9
Bredeney	44	25	79	41	56	27	26	27	23	32	25	405
Breukelen									1			1
Brezany			4	2	1		1			1		9
Bron			1			3		1		1		6
Bronx			1						1			2
Brooklyn					1							1
Broughton	1											1
Bruck											1	1
Brunei						3	2			1		6
Bsilla			1	1		3	1			2		8

TABLE 3

Laboratory-confirmed *Salmonella* isolates from human sources reported to CDC by serotype and year, 1999-2009

Serotype	1999	2000	2001	2002	2003	2004	2005	2006	2007	2008	2009	Total
Budapest									1			1
Bukavu		1			1				2	1		5
Bukuru						1						1
Burgas									1			1
Burundi										1		1
Butantan	1			1			1					3
Butantan var. 15+		1									1	2
Buzu	1				1			2	2			6
Calabar	1											1
California	1		1		5	1		2		1	1	12
Canada		1		1	1	1	1					5
Cannstatt		1	1	3	1			1		2	15	24
Caracas	1			1				1		1		4
Carmel	1	1	8	9		9	4	1	4	2	2	41
Carno	1											1
Carrau	12	6	5	3	7	8	9	10	1	7	64	132
Cerro	56	52	31	39	28	19	22	33	26	70	22	398
Cerro var. 14+					3	3	4	2	5	7	4	28
Ceyco			1	1								2
Chailey	3	3		1	1	3	2			2	3	18
Chandans				3		1	5	1	1	1	1	13
Charity		1									1	2
Chester	29	23	24	23	51	15	15	29	31	28	41	309
Chicago				1	1			1	2			5
Chichiri			1		1							2
Chile										1		1
Chincol	2	2			1		2	1				8
Chingola			1						1			2
Chittagong							7					7
Choleraesuis	25	10	8	11	13	17	7	12	15	18	22	158
Choleraesuis var. Decatur			1	3		1					2	7
Choleraesuis var. Kunzendorf	9	10	5	8	6	9	6	11	10	4	9	87
Clackamas	3	1		6	4	1	1	1	2	5		24
Claibornei	1		1			1		1				4
Clerkenwell			1									1
Cleveland						1					1	2
Cochise		1										1
Coeln	2	3	3	3	2	3	2	4	4	6		32
Colindale	2	3	2	5	8	3	4	13	5	6	7	58

TABLE 3

Laboratory-confirmed *Salmonella* isolates from human sources reported to CDC by serotype and year, 1999-2009

Serotype	1999	2000	2001	2002	2003	2004	2005	2006	2007	2008	2009	Total
Colorado	2				1							3
Concord	3		2	1	3	4	6	17	20	31	38	125
Corvallis	1	1		1	3	4	13	23	22	30	13	111
Cotham	2	1		3	6	5	9	12	15	23	20	96
Cremieu		2	1				1					4
Croft								1				1
Cubana	42	31	26	21	24	18	13	17	25	9	20	246
Cuckmere						1		1				2
Cullingworth		1					6			1		8
Curacao	1	2	1				1					5
Daarle						1	1			1		3
Dahlem								1				1
Dahomey					1							1
Dahra	2	1	1	1	1		2	2	1		1	12
Dakar									1			1
Damman						1						1
Daytona	4	3	4	4	10	10	5	5	1	3	2	51
Denver	1	1	1	2	5	1	5	1	3	6	3	29
Derby	174	188	121	169	125	137	123	139	148	159	131	1614
Derkle		1										1
Dessau			1									1
Diguel				2	1		1					4
Diourbel		1					1					2
Djakarta								1				1
Djelfa	1											1
Djugu	1	1				2	1	2	2	2		11
Doncaster					1							1
Doorn								1				1
Doulassame							1					1
Dublin	66	94	76	83	65	73	55	88	109	111	103	923
Duesseldorf	5	1	2		8	9	1		3	1	3	33
Dugbe		1										1
Duisburg	1	1	2	2	2			1	2	5	3	19
Dunkwa			1									1
Durban	3	4	5	1	3	16	6	11	12	8	17	86
Durham	1	3	3	4	4	3	8	4	1	3	4	38
Duval				1		1		1			1	4
Ealing	6	9	16	10	12	13	27	12	28	26	33	192
Eastbourne	7	10	6	18	18	8	30	16	16	25	15	169

TABLE 3

Laboratory-confirmed *Salmonella* isolates from human sources reported to CDC by serotype and year, 1999-2009

Serotype	1999	2000	2001	2002	2003	2004	2005	2006	2007	2008	2009	Total
Eboko											1	1
Ebrie	1	3	2	1	1					1	1	10
Echa					1		1					2
Edinburg	6	2	1	5	20	27	20	17	8	7	10	123
Edmonton							1					1
Ekpoui		1		1							1	3
Elisabethville						1			2			3
Elokate					1							1
Elomrane	3	1	1	1	1	3			1			11
Emek	8	5	2	2	11	6	7	3	7		3	54
Emmastad											1	1
Entebbe	1				1	1		3	6			12
Enteritidis	5343	6487	5634	5145	4914	5028	6732	6740	6152	7485	7144	66804
Enugu										1	1	2
Epicrates				1								1
Eppendorf	2	2				1		2	1	5		13
Escanaba				1					1			2
Eschweiler							1					1
Essen	3	4	1		1	2	1	1	5	1		19
Falkensee					1		4		1		1	7
Fann				1			1					2
Farmsen	3		1	1	1	1	1			1		9
Farsta				4		1		1				6
Fayed	6	3	4		1		1	1				16
Ferruch					1							1
Fillmore				1						1		2
Finkenwerder	1											1
Fischerkietz	1							1				2
Fischerstrasse		1		1					4	4	3	13
Fitzroy						1						1
Florida	1	2	4	2	3	1	6	3	7	1	8	38
Fluntern			2	2	5	8	3	3	5	6	7	41
Fomeco							1					1
Frankfurt											1	1
Freefalls											1	1
Freetown			1		6	2	11			1	2	23
Freiburg					1					1		2
Fresno			3	1					1	4	4	13
Friedenau				1	1			1				3

TABLE 3

Laboratory-confirmed *Salmonella* isolates from human sources reported to CDC by serotype and year, 1999-2009

Serotype	1999	2000	2001	2002	2003	2004	2005	2006	2007	2008	2009	Total
Friedrichsfelde						2	1	1	1	1		6
Frintrop								1				1
Fulica							1					1
Fyris							1	2				3
Gabon	1			1								2
Galiema					1	1					1	3
Galil			2									2
Gallinarum	1		1	3	2		2		1		2	12
Gambia							1					1
Gaminara	52	51	58	44	86	134	99	77	79	89	62	831
Garba			1									1
Garoli								1				1
Gatow		1	1	1			2		2		2	9
Gatuni	1	1	3		2	3	1	2	2	4	2	21
Georgia			4	3	2	2	1	6	5	3		26
Gera					1							1
Give	98	86	75	55	93	102	103	123	106	116	111	1068
Give var. 15+	23	9	9	5	7	5		1	6	4		69
Give var. 15+, 34+				1						2		3
Glasgow			1						2			3
Glostrup	7	6	6	2	2	2	10	5	5	4	3	52
Gnesta						1			2	3		6
Goettingen	1	3		2	1	2			3	3	1	16
Goldcoast	1					1	2		1			5
Goma					1							1
Gombe						1				1		2
Gouloumbo											1	1
Goverdhan									1			1
Grandhaven								1				1
Groenekan			1									1
Grumpensis	2	1	1		1		102	9	2	3	3	124
Guildford	1								1		2	4
Guinea						1	3	1	3	2	1	11
Gustavia		1	1									2
Gwale								1				1
Haardt	3	4	4	3	52	29	4	5	5	3	1	113
Hadar	516	354	307	333	280	277	205	275	285	320	266	3418
Hadejia	1											1
Haifa	6	11	4	6	3	5	5	5	5	5	6	61

TABLE 3

Laboratory-confirmed *Salmonella* isolates from human sources reported to CDC by serotype and year, 1999-2009

Serotype	1999	2000	2001	2002	2003	2004	2005	2006	2007	2008	2009	Total
Halle	1											1
Hannover						1						1
Harburg				1	1			1				3
Harcourt								1				1
Harrisonburg						1						1
Hartford	140	150	158	198	188	190	239	199	197	214	184	2057
Hatfield	1				1							2
Hato	1	2	5	1	1	2		4	2	5	1	24
Havana	46	26	19	28	29	32	26	37	35	59	58	395
Hayindogo			1	1								2
Heidelberg	1816	1772	1895	1985	1845	1758	1905	1495	1610	1325	1411	18817
Hemingford						1						1
Herston			1	1	2	2	2	2	1	2	3	16
Hessarek					1							1
Hidalgo						1					1	2
Hiduddify	1	1		1	2			1				6
Hillegersberg				1	1			1		1		4
Hillingdon							1					1
Hindmarsh		3	4	2	5	12	5	5		3	3	42
Hofit							1	2		1	1	5
Hoghton						1		1				2
Holcomb	1		3	4	1		2	3	4	5	3	26
Holocomb									1			1
Homosassa										1		1
Horsham	3				1			1		1		6
Hull			1	1	2		3	3	5	9	1	25
Hvittingfoss	38	34	30	44	32	34	36	45	55	47	53	448
Ibadan	27	17	9	10	17	5	9	3	2	3		102
Idikan		2		1	1		1		2	3		10
Ilala						1				1	1	3
Inchpark	1											1
Indiana	14	9	13	24	43	18	17	28	11	15	3	195
Infantis	596	613	441	472	570	588	506	491	540	653	633	6103
Inganda		1	4		2	1		1	2		2	13
Inpraw					1							1
Inverness	24	22	24	30	30	49	44	49	58	47	55	432
Ipswich	1											1
Irenea	1				1							2
Irumu	6	6	9	2	9	13	9	9	5	10	8	86

TABLE 3

Laboratory-confirmed *Salmonella* isolates from human sources reported to CDC by serotype and year, 1999-2009

Serotype	1999	2000	2001	2002	2003	2004	2005	2006	2007	2008	2009	Total
Isangi	2		3	1	4	3	4	1	4	4	1	27
Israel					2	1		1	4			8
Istanbul	25	15	27	33	15	61	9	8	4	2	6	205
Isuge				1								1
Itami	7	12	50	3	8	7	10	1	1		1	100
Ituri	3	2	7	1		1	1	1	1	3	1	21
Jaffna									1			1
Jamaica	2									1		3
Jangwani	6	7	2	3		4	4		8	1	5	40
Javiana	1197	1204	1068	1201	1718	1776	1324	1433	1331	2329	1997	16578
Jedburgh							1					1
Jericho							1					1
Jerusalem			1	1	1			1				4
Joal				2	2	4			1			9
Jodhpur				1		1				1		3
Johannesburg	44	31	35	20	17	40	44	22	38	31	51	373
Jos	1						2					3
Jubilee						1		1				2
Jukestown								1				1
Kaapstad		1	1		2	1						5
Kaduna							1					1
Kalamu			1					1			2	4
Kalina			1				1					2
Kallo								1				1
Kambole					1							1
Kampala											1	1
Kande			1	3								4
Kandla				1								1
Kanifing											1	1
Kapemba						1		1				2
Kedougou	2	3	1	1		3	4	4	1	2	2	23
Kentucky	71	48	64	69	59	56	81	123	96	96	73	836
Kiambu	40	24	27	41	84	31	53	65	34	82	91	572
Kimberley							1					1
Kimuenza				1			1	1	1			4
Kingabwa	2		3	11	4	7	11	4	8	7	6	63
Kingston			2	1		1	1		2	5	1	13
Kinondoni	1			1								2
Kintambo	8	3	5	9	10	16	5	15	8	13	10	102

TABLE 3

Laboratory-confirmed *Salmonella* isolates from human sources reported to CDC by serotype and year, 1999-2009

Serotype	1999	2000	2001	2002	2003	2004	2005	2006	2007	2008	2009	Total
Kirkee	1							2				3
Kisangani							2	1		1	1	5
Kisarawe			1	2		1	1		3	1	2	11
Kisii									1	1		2
Kivu	2							1				3
Koketime										3		3
Kokomlemle	1	2	4	2	1	2	1	2	3	2	2	22
Konstanz			2		1				1			4
Korbol							1	1				2
Korlebu								1				1
Kortrijk								1				1
Kottbus	5	15	73	19	7	8	8	15	13	19	5	187
Kotu						1	4					5
Kouka											5	5
Kralingen	1	1										2
Krefeld	1	1		2	1		1			2	2	10
Kristianstad		1	1									2
Kua	2	1	2		3	2			1	3	1	15
Kumasi										2		2
Kunduchi										1		1
Labadi										1		1
Lagos			1	1	1	2		1	4	1	1	12
Lamberhurst		1										1
Landau			1									1
Landwasser	2		1							3		6
Lansing	1					2			1		3	7
Larochelle	4	2		8	4	6	2	2	3	4	2	37
Lattenkamp			1				1		1	3	3	9
Leeuwarden			2		1							3
Leopoldville			1									1
Lexington		1	5	1		5	1	1	4	1	2	21
Lexington var. 15+	1							1				2
Lika					4							4
Lille	1	1		1		1			1			5
Lille var. 14+		1										1
Limete			1				1	1		3		6
Lindenburg	5	7	3	2	3	2	4	3	2	3	1	35
Lindern				1								1
Litchfield	135	119	140	125	168	155	141	202	238	357	262	2042

TABLE 3

Laboratory-confirmed *Salmonella* isolates from human sources reported to CDC by serotype and year, 1999-2009

Serotype	1999	2000	2001	2002	2003	2004	2005	2006	2007	2008	2009	Total
Liverpool	2	1			1	3	4	2	3	5	14	35
Livingstone	4	6	8	9	2	3	7	9	8	11	18	85
Livingstone var. 14+	1								1			2
Llandoff					1							1
Loanda		1	1		1	2	2	2	3		1	13
Lockleaze	1			1			1	2	1			6
Lomalinda	8	9	5	25	12	15	18	20	12	16	18	158
Lome			2		1					1	1	5
Lomita		2	4	2	6	4			1	4	1	24
London	41	26	24	22	45	28	30	37	176	29	20	478
London var. 15+	1											1
Loubomo			1									1
Louga					1							1
Lowestoft					1							1
Luciana	6	8	2	6	4	4	4	3	9	5	5	56
Macallen									1			1
Madelia	12	16	3	4	6	6	6	11	11	10	20	105
Madison										1		1
Madras							1					1
Malika							1					1
Malstatt		1	1				2					4
Manchester	1	1	1		1					1		5
Mango	1											1
Manhattan	78	72	50	89	53	80	58	79	55	115	78	807
Mapo					1							1
Mara							1					1
Maracaibo				2								2
Marburg					1							1
Maricopa										3		3
Marshall			1									1
Massenya					1							1
Matadi	2	9	3	5	4	2	2		2	2		31
Matopeni			1					3	1	1		6
Maumee		1				1			1		4	7
Mbandaka	231	157	163	171	173	164	190	240	231	234	215	2169
Mbandaka var 14+								1				1
Meekatharra			1									1
Meleagridis	14	13	19	6	14	8	12	20	26	10	16	158
Meleagridis var. 15+	1								1			2

TABLE 3

Laboratory-confirmed *Salmonella* isolates from human sources reported to CDC by serotype and year, 1999-2009

Serotype	1999	2000	2001	2002	2003	2004	2005	2006	2007	2008	2009	Total
Memphis	1					2		1				4
Menden	1							1				2
Mendoza	1		2		1	8	2					14
Menston			2		2			1	1	1		7
Mgulani	2				1			2	1		1	7
Miami	95	81	68	130	66	103	82	64	97	102	109	997
Michigan	2	1	1		2	6	1	4	7	3	6	33
Mikawasima	4	6	3	5	4	1	1	6	2	1	1	34
Milwaukee			4									4
Mim						1						1
Minnesota	23	21	18	35	25	35	55	57	34	24	27	354
Mississippi	248	286	336	315	451	558	566	604	472	450	445	4731
Mkamba						1						1
Molade		4			2		2	3	2	2	2	17
Mono			2		2		41	31	30	10		116
Mons				1						1		2
Monschau	5	5	7	5	13	21	14	10	11	14	21	126
Montevideo	851	841	630	729	890	874	809	1061	1003	1129	1264	10081
Montreal							1					1
Morehead										2		2
Mornington								1				1
Morocco				1								1
Morotai						1						1
Moscow			1					1				2
Moualine			1									1
Moundou	1											1
Mountpleasant			1		1		1		1	1		5
Mowanjum										1		1
Mpouto											1	1
Muenchen	1332	642	586	603	795	739	733	753	995	888	809	8875
Muenster	65	113	64	49	70	59	93	96	70	85	48	812
Muenster var. 15+			1	1	9	2	1		1			15
Muenster var. 15+, 34+	4	2		1					1			8
Mundonobo		1					1					2
Nagoya				1	1		1	1				4
Napoli	2	2		1		1	6	3	1	1	2	19
Narashino							1					1
Nchanga		1			2			1				4
Nchanga var. 15+									1			1

TABLE 3

Laboratory-confirmed *Salmonella* isolates from human sources reported to CDC by serotype and year, 1999-2009

Serotype	1999	2000	2001	2002	2003	2004	2005	2006	2007	2008	2009	Total
Ndolo			1									1
Nessziona		1	2			1	1	3	1			9
Neudorf								1	1			2
Neukoelln						1						1
Newholland							2					2
Newmexico		4	2	2	10	3	3	2	1	8	5	40
Newport	2618	3074	3168	4251	4000	3329	3300	3373	3620	4097	3811	38641
Newrochelle	1											1
Newyork	1								1			2
Ngili				2								2
Ngor	2											2
Nieukerk					1							1
Nigeria		1			1	2			1	1	3	9
Nikolaifleet			1									1
Nima	1	5	6	13	2	5	8	15	8	11	5	79
Nitra	1		1		2				1		1	6
Nola			1									1
Norwich	74	69	96	106	121	106	91	119	118	139	120	1159
Nottingham		4	2	1	11	1	4	2	4	3	2	34
Nyanza				1		1			1		1	4
Nyborg					1				1			2
Oakland	1	1	1	1	3				1	5	1	14
Obogu					2							2
Offa				1			1	1	2	2	4	11
Ohio	78	85	64	58	49	74	87	62	46	37	54	694
Ohio var. 14+			1				1	6	4	1	2	15
Ohlstedt						1						1
Okatie					4			2				6
Oldenburg	1			1	1				1			4
Onderstepoort	1	2	1	2	2			1				9
Onireke											2	2
Ontario	1											1
Oranienburg	616	563	598	607	589	495	590	719	692	668	899	7036
Oranienburg var. 14+				2	11	2	5	9	3		1	33
Orientalis	2	5		1	8	2				3	1	22
Orion		3	3		5	3	2	5	6	3		30
Orion var. 15+	1		2	1		1			1			6
Orion var. 15+, 34+	4	2	1			1						8
Oritamerin		1	3	1		3	2	1				11

TABLE 3

Laboratory-confirmed *Salmonella* isolates from human sources reported to CDC by serotype and year, 1999-2009

Serotype	1999	2000	2001	2002	2003	2004	2005	2006	2007	2008	2009	Total
Os								1				1
Oskarshamn									1			1
Oslo	28	20	23	19	21	25	30	23	20	35	32	276
Othmarschen	20	27	14	17	17	23	20	11	16	16	12	193
Ouakam			1		1			4				6
Oudwijk			1									1
Overschie	2	1	1	1	2		3	3	2	2	1	18
Oxford						1						1
Oxford var. 15+, 34+								1				1
Oyonnax		1					2					3
Pakistan	6	3	5	5	4	5		6	3		2	39
Panama	132	158	162	153	184	150	149	199	177	172	159	1795
Papuana			1							3		4
Paratyphi A	77	93	86	107	110	145	121	182	191	145	179	1436
Paratyphi B	172	120	180	124	215	239	105	138	151	94	46	1584
Paratyphi B Var. L(+) tartrate+										3		3
Paratyphi B var. L(+) tartrate+	316	468	467	442	342	354	460	417	412	470	436	4584
Paratyphi C	1		1			2	1	1	1			7
Patience				1								1
Penarth		1	1					1				3
Pensacola	8	10	8	8	2	4	14	13	12	17	9	105
Pharr	1										1	2
Plymouth							4	2	1	1	1	9
Poano		2		8	9	6	6	5	2		3	41
Poitiers							1					1
Pomona	28	26	38	61	68	70	68	91	65	92	80	687
Poona	249	337	331	283	211	234	196	204	251	512	238	3046
Portland						1		2		1		4
Potengi										1		1
Potsdam	9	2	6	4	9	4	4	18	17	22	31	126
Powell								1				1
Praha	1	1			1		1	1	1	1	1	8
Presov								1	1			2
Preston										1		1
Putten	3	2	9	4	12	4	9	2	5	10	25	85
Quiniela						2						2
Ramatgan	1											1
Raus	3											3
Reading	97	95	53	81	90	74	55	51	58	47	53	754

TABLE 3

Laboratory-confirmed *Salmonella* isolates from human sources reported to CDC by serotype and year, 1999-2009

Serotype	1999	2000	2001	2002	2003	2004	2005	2006	2007	2008	2009	Total
Rehovot			1		1							2
Redlands					1			1				2
Remo	2		3			1		2	1		1	10
Rhone									1			1
Richmond	2	7	6	11	6	6	8	9	12	2	8	77
Ridge	1		3	1					1			6
Riggil			1									1
Riogrande	1											1
Rissen	6	10	4	7	7	7	5	18	11	30	127	232
Rissen var. 14+							1					1
Rittersbach				1	1							2
Riverside							1			1		2
Romanby	6	5	1	1	1	1	3	1	1	1	2	23
Roodepoort	2	1	1	2	6	3	3	9	1		2	30
Rostock			2									2
Rottnest	1											1
Rovaniemi								1				1
Rubislaw	98	76	66	83	103	104	100	96	129	124	89	1068
Ruiru	1		1				1					3
Ruzizi	1			1								2
Saarbruecken				1				3		1		5
Saintemarie						1			1	1		3
Saintpaul	472	548	471	548	838	695	685	588	520	1910	854	8129
Salford		1						1		1		3
Sandiego	104	142	115	148	126	112	139	221	200	133	142	1582
Sangalkam						1						1
Sangera				1							1	2
Sanjuan	2	3						1	1			7
Sanktgeorg			1					2				3
Santiago	1				2	1						4
Sapele				1								1
Saphra	13	14	11	4	12	4	5	1	1	7	2	74
Schleissheim	6	7	4	7	8	3	6	6	1			48
Schoeneberg			1									1
Schwarzengrund	155	113	104	99	181	148	139	174	307	351	348	2119
Schwerin							1					1
Seegefeld		1										1
Sekondi					1							1
Selby						1						1

TABLE 3

Laboratory-confirmed *Salmonella* isolates from human sources reported to CDC by serotype and year, 1999-2009

Serotype	1999	2000	2001	2002	2003	2004	2005	2006	2007	2008	2009	Total
Sendai	1	1		1								3
Senegal		1	2	1	1							5
Senftenberg	120	148	143	128	99	104	112	113	168	209	155	1499
Seremban		1	1	1		2	1					6
Sherbrooke		1										1
Shiopley						2						2
Shubra	7	5	3	7	3	2	2	3	2	9	5	48
Simi				1				2	1			4
Singapore	4	6	1	2	2	10	5	7	8	14	9	68
Sinstorf	3	3	7		2	1		1				17
Soahanina		1					1					2
Soerenga	2	2	3	1	1	3	1	3	7	5	5	33
Somone	1		1	3				1				6
Southampton	1	1										2
Southbank										1		1
Spalantor						2						2
Splott							1					1
Stachus	2	1				1	1		1			6
Stanley	172	239	173	177	227	189	224	315	258	218	165	2357
Stanleyville	11	33	18	18	3	6	7	5	6	10	9	126
Stellingen					1	1						2
Sternschanze									1			1
Stockholm	4	2					1					7
Stockholm var. 15+									1			1
Stoneferry					1	1					1	3
Stormont					1							1
Stourbridge							1					1
Strasbourg			1			1						2
Suberu					1		1	1				3
Suelldorf	1				2	1		1	2	1	3	11
Sundsvall	4	4	4	7	11	6	9	3	3	4	3	58
Sya		1										1
Szentes				1								1
Tabligbo							1		1			2
Tafo	1											1
Takoradi	4			1	6	5		3	1	2	6	28
Tallahassee	5	3	2	4	8	3	7	11	7	5	5	60
Tambacounda	1	1										2
Tamberma								1				1

TABLE 3

Laboratory-confirmed *Salmonella* isolates from human sources reported to CDC by serotype and year, 1999-2009

Serotype	1999	2000	2001	2002	2003	2004	2005	2006	2007	2008	2009	Total
Tampico	2			1								3
Tanger			1		2							3
Tanzania								1				1
Teddington				1								1
Telaviv		1										1
Teitelkebir	16	14	11	11	21	29	45	53	68	27	26	321
Teltow					1							1
Tennessee	29	24	33	36	42	57	132	312	616	131	65	1477
Texas							1					1
Thies	1											1
Thompson	607	609	514	442	509	494	428	447	414	413	478	5355
Thompson var. 14+						1						1
Tiko									1			1
Tilene	1	2		2	4		1	1			1	12
Tokoin		4			2		1					7
Tornow			2		2	3		1				8
Toucra		1		2	2	3	2	1				11
Trachau					1							1
Travis	1		1			2					1	5
Treforest			2									2
Treguier								1				1
Tripoli						2						2
Tschangu											1	1
Tsevie			2									2
Tshiongwe		2		2	2	1	4	3				14
Tucson	1			1		1	4		4	2	4	17
Typhi	352	399	344	293	362	306	350	413	450	499	432	4200
Typhimurium	7126	6495	6061	6312	5905	5872	5977	5917	5315	5672	4983	65635
Typhimurium var. 5-	926	933	979	828	865	983	1010	955	964	1064	1137	10644
Typhisuis			1			2						3
Tyresoe						1		1		1		3
Uccle		2			1					1	1	5
Uganda	58	55	97	61	59	45	47	59	71	67	51	670
Uganda var. 15+	3	4	1	3	2	1			2	1		17
Ughelli		1					2					3
Umbilo								1				1
Umhlali		1										1
Uppsala		1				1		1	4			7
Urbana	56	38	53	41	60	59	44	36	65	52	40	544

TABLE 3

Laboratory-confirmed *Salmonella* isolates from human sources reported to CDC by serotype and year, 1999-2009

Serotype	1999	2000	2001	2002	2003	2004	2005	2006	2007	2008	2009	Total
Utah										1		1
Uzaramo	1	2	1		3	5		2		4	3	21
Valdosta						2			3			5
Vancouver									2	1		3
Vejle	1		1	1	2	4	1				1	11
Vejle var. 15+					1							1
Veneziana			1									1
Victoria			1	1						1		3
Vinohrady								1				1
Virchow	70	104	80	61	78	79	82	80	77	104	83	898
Virginia	10	1	5	4	3	10	6	13	4	6	10	72
Vitkin			1						1			2
Vleuten										1		1
Volkmarsdorf						1						1
Vuadens										1		1
Wa	1								1			2
Wagenia		1			1						1	3
Wandsworth	9	12	3	5	6	2	3	7	69	6	4	126
Wangata		2		1		3	3		2	3		14
Waral				1	2							3
Warmсен									1			1
Warnow				2	1							3
Washington	1				1							2
Waycross	2	5	4	1	2	2	5	2		4	6	33
Welikade	1		3	1		1				1	1	8
Wелtevređen	54	59	89	65	71	94	91	91	79	92	70	855
Wелtevređen var. 15+	1	1	3			2	1	4	4	2	3	21
Wentworth						4						4
Wernigerode			1				1					2
Weslaco	1				1		2		1			5
Westeinde							1					1
Westerstede	1											1
Westhampton	2		3	5	8	6		3	7	3	2	39
Westhampton var. 15+	2											2
Weston					1							1
Wichita					1							1
Widemarsh	1			2	4	1		2	2	6	4	22
Wien	1	1	3					3	2		2	12
Wil	1					1						2

TABLE 3

Laboratory-confirmed *Salmonella* isolates from human sources reported to CDC by serotype and year, 1999-2009

Serotype	1999	2000	2001	2002	2003	2004	2005	2006	2007	2008	2009	Total
Willamette						1						1
Winneba	1			1		1						3
Woodinville					2					1		3
Worthington	28	28	29	27	17	34	21	33	18	38	29	302
Yaba							1					1
Yehuda					1							1
Yoruba				1	1			1				3
Yovokome	1				1							2
Yundum				1								1
Zaiman		1							1	1		3
Zanzibar	1				2		1			3		7
Zega							2					2
Zerifin						3						3
Zwickau								1				1
I 3,10:-:1,6									1	1		2
I 3,10:e,h:-		5	6	2				2				15
I 3,10:l,v:-				1				2	2		1	6
I 3,10:l,z13:-		2	3									5
I 3,10:r:-		2						3				5
I 3,15,34:l,v:-				1								1
I 3,15:l,z13:-					1							1
I 4,12:l,v:-							1					1
I 4,[5],12:-:1,2	2	3	3	4	3	3	1	15	3	10	9	56
I 4,[5],12:-:1,7				1					2			3
I 4,[5],12:b:-	8	8	4	12	24	50	72	70	78	97	90	513
I 4,[5],12:b:- var. L(+) tartrate+							6	27	105	122	124	384
I 4,[5],12:d:-			3	5				3	5	12	5	33
I 4,[5],12:e,h:-	2			2	2		2	5	5	4	2	24
I 4,[5],12:i:-	138	233	260	296	548	739	823	1200	1243	980	991	7451
I 4,[5],12:r:-			1	1	4	17	2	1		18	17	61
I 6,14,24:e,h:-					1							1
I 6,14,25:-:l,z13,z28								1				1
I 6,14,25:b:-						2		1	1	1		5
I 6,7:-:1,2			1								2	3
I 6,7:-:1,5	2	3	4	9	31	16	23	15	23	27	26	179
I 6,7:-:1,6					1						1	2
I 6,7:-:e,n,x											1	1
I 6,7:-:e,n,z15											2	2
I 6,7:b:-			1			1	1					3

TABLE 3

Laboratory-confirmed *Salmonella* isolates from human sources reported to CDC by serotype and year, 1999-2009

Serotype	1999	2000	2001	2002	2003	2004	2005	2006	2007	2008	2009	Total
I 6,7:c:-								1	2	1	1	5
I 6,7:e,h:-				2	1			2	1	2	4	12
I 6,7:i:-								1				1
I 6,7:k:-	1	1	3	2	5	3	3	17	6	7	18	66
I 6,7:l,v:-				2								2
I 6,7:l,w:-		1	2	1				1		3	1	9
I 6,7:r:-						1	1	2	1	7	2	14
I 6,7:y:-										3		3
I 6,7:z4,z23:-				1								1
I 6,8,20:z4,z24:-								1				1
I 6,8:-:1,2	1	1	1		1		2	1	2	4	3	16
I 6,8:-:1,5		2		1			1		2			6
I 6,8:-:e,n,x					1							1
I 6,8:-:e,n,z15											1	1
I 6,8:b:-							1					1
I 6,8:d:-	2	1		3	1	1		1	9	5	8	31
I 6,8:e,h:-			1		2	3		2	2	6	7	23
I 6,8:i:-		2								1		3
I 6,8:l,v:-										1		1
I 6,8:z10:-				1						2		3
I 8,20:i:-									1			1
I 8:e,h:-									1			1
I 9,12:-:1,2											1	1
I 9,12:-:1,5		1	2	5	1	1		3	4	6	10	33
I 9,12:a:-				1						3		4
I 9,12:g,z51:-								1				1
I 9,12:l,v:-				3	1			2	1	6		13
I 9,12:l,z28:-	6	9	6	12	15	1	7	9	14	17	33	129
I 11:e,h:-						1						1
I 11:r:-					2						1	3
I 11:z10:-								1				1
I 13,22:-:1,6		1					1		1			3
I 13,22:b:-			1	2								3
I 13,22:z:-								1			2	3
I 13,23:-:1,5						1			2	1	2	6
I 13,23:b:-					4	3	8	4	81	131	113	344
I 13,23:c:e,n,z15										1		1
I 13,23:i:-	1			1								2
I 16:d:-		1								1	1	3

TABLE 3

Laboratory-confirmed *Salmonella* isolates from human sources reported to CDC by serotype and year, 1999-2009

Serotype	1999	2000	2001	2002	2003	2004	2005	2006	2007	2008	2009	Total
I 16:e,h:-					1						2	3
I 16:l,v:-							2		2			4
I 28:i:-								1				1
I 38:k:-						1				2	1	4
I 40:-:e,n,x						2						2
I 43:k:-								3				3
I 45:b:-	1							2		5	3	11
I 47:b:-											1	1
I 47:z4,z23:-		1				1		13	2	3	3	23
II 4,12,[27]:b:[e,n,x]			1		1	1						3
II 4,12,[27]:z:e,n,x	1											1
II 4,12:-:1,6						1						1
II 4,12:a:-			1									1
II 4,12:l,w:e,n,x	3	4										7
II 6,7:b:z42							1					1
II 6,7:m,t:-					1							1
II 6,7:z39:1,5,7					1							1
II 6,7:z:1,5								1				1
II 9,12:b:-						1						1
II 9,12:d:e,n,x					1							1
II 9,12:g,m,[s],t:[1,5,7]:[z42]	1		5	1	2							9
II 9,12:g,m,s,t:e,n,x							1					1
II 9,12:g,s,t:e,n,x				1			1					2
II 9,12:l,w:e,n,x				1								1
II 9,12:l,z28:1,5		1										1
II 9,12:m,t:-										1		1
II 9,12:z39:1,7		2							1			3
II 9,46:g,[m],[s],t:[e,n,x]		1										1
II 9,46:m,t:e,n,x						1						1
II 11:g,[m],s,t:z39				1			1					2
II 11:m,t:e,n,x		1										1
II 13,22:z29:1,5				1	3							4
II 13,23:d:e,n,x										1		1
II 13,23:g,m,[s],t:[e,n,x]	1			1								2
II 13,23:z:1,5		1										1
II 16:z35:e,n,x						1						1
II 16:z4,z23:-									1			1
II 17:g,t:-		1	2	1								4
II 17:g,t:[e,n,x,z15]										1		1

TABLE 3

Laboratory-confirmed *Salmonella* isolates from human sources reported to CDC by serotype and year, 1999-2009

Serotype	1999	2000	2001	2002	2003	2004	2005	2006	2007	2008	2009	Total
II 21:b:1,5					3							3
II 21:g,[m],[s],t:-									1	1		2
II 21:z10:[z6]		1	2					1	2	1	4	11
II 30:l,z28:z6						1	1	1		1	1	5
II 35:g,m,s,t:-				1								1
II 35:l,z28:-								1				1
II 35:z29:e,n,x					1							1
II 40:c:e,n,x,z15		1									1	2
II 40:m,t:-				1								1
II 40:z39:1,7								1				1
II 40:z4,z24:z39	1				1							2
II 41:z10:z6	1			1					1	1		4
II 42:b:e,n,x,z15				1			1					2
II 42:z:e,n,x,z15											1	1
II 44:z4,z23:-							1					1
II 47:b:1,5	6	6	2		5	1	8	2	4	4	1	39
II 47:b:e,n,x,z15								1	2		2	5
II 47:b:z6									1			1
II 47:d:z39		2		4								6
II 48:a:z39											1	1
II 48:a:z6			2	2	1			1	1	1		8
II 48:b:z6					1							1
II 48:d:1,2						1						1
II 48:d:z6	1	3		4		1	1	2			2	14
II 48:g,m,t:-	1											1
II 48:k:z39				1								1
II 48:z39:z81					1	2	1					4
II 50:b:z6	3	1	2	4	4	2	1	2	2	2	1	24
II 55:k:z39										1		1
II 58:c:z6								2	1			3
II 58:d:z6		1	1			1						3
II 58:l,z13,z28:1,5											1	1
II 58:l,z13,z28:z6						1	1	2	8	7	5	24
II 60:g,m,t:z6										1		1
IIIa 13,22:z4,z23:-								1	1			2
IIIa 13,23:g,z51:-								1		1		2
IIIa 13,23:z4,z23,[z32]:-										2		2
IIIa 13,23:z4,z24:-										1	6	7
IIIa 17:z29:-										1		1

TABLE 3

Laboratory-confirmed *Salmonella* isolates from human sources reported to CDC by serotype and year, 1999-2009

Serotype	1999	2000	2001	2002	2003	2004	2005	2006	2007	2008	2009	Total
IIIa 17:z4,z23:-				1								1
IIIa 18:z36:-								1				1
IIIa 18:z4,z23:-				1	7	4	13	19	7	29	33	113
IIIa 18:z4,z32:-					2			1		2		5
IIIa 21:g,z51:-		1		1			2	2		2		8
IIIa 21:z29:-										2		2
IIIa 21:z36:-								1				1
IIIa 21:z4,z23:-											1	1
IIIa 35:g,z51:-							1					1
IIIa 35:z29:-						1				1		2
IIIa 35:z4,z23:-							1	1	1	2	1	6
IIIa 35:z4,z32:-									2			2
IIIa 40:g,z51:-		1			2					2	1	6
IIIa 40:z36:-										1	1	2
IIIa 40:z4,z23:-		1	1					2		1	2	7
IIIa 40:z4,z24:-								1			1	2
IIIa 41:z4,z23,z32:-										1	2	3
IIIa 41:z4,z23:-		1		4	2	11	6	11	13	17	10	75
IIIa 41:z4,z24:-											2	2
IIIa 41:z4,z32:-											2	2
IIIa 42:g,z51:-									1			1
IIIa 42:z4,z23:-								1	1			2
IIIa 42:z4,z24:-							1			1		2
IIIa 43:z29:-			1				1			1		3
IIIa 43:z4,z23:-											2	2
IIIa 43:z4,z24:-							1					1
IIIa 44:z4,z23,z32:-									1			1
IIIa 44:z4,z23:-		5				1				1		7
IIIa 44:z4,z24:-					1			2		2	1	6
IIIa 44:z4,z32:-										1	1	2
IIIa 45:z4,z24:-				1								1
IIIa 47:z4,z23:-								3		1		4
IIIa 48:g,z51:-	3	4	2	7	4	3	3	6	8	16	15	71
IIIa 48:z29:-				1				1	1			3
IIIa 48:z36:-			1					1			1	3
IIIa 48:z4,z23,z32:-											1	1
IIIa 48:z4,z23:-				2								2
IIIa 48:z4,z24:-	1	2	2		3		3	4	3	6	4	28
IIIa 50:z29:-											1	1

TABLE 3

Laboratory-confirmed *Salmonella* isolates from human sources reported to CDC by serotype and year, 1999-2009

Serotype	1999	2000	2001	2002	2003	2004	2005	2006	2007	2008	2009	Total
IIIa 50:z36:-										1		1
IIIa 50:z4,z23:-									3	1	2	6
IIIa 50:z4,z32:-								2				2
IIIa 51:g,z51:-									1	1		2
IIIa 51:z4,z23:-	1			1		2		1		1	1	7
IIIa 51:z4,z24:-					1					1		2
IIIa 53:g,z51:-		1					1					2
IIIa 53:z4,z23,z32:-	4	2									1	7
IIIa 53:z4,z23:-	2					1	3	5		4	3	18
IIIa 53:z4,z24:-			1				1					2
IIIa 56:z4,z23:-		1					3	1	5	3	2	15
IIIa 59:z29:-					1							1
IIIa 59:z36:-					1							1
IIIa 62:z4,z23:-				1								1
IIIa 63:z4,z23:-								2				2
IIIb (6),14:z10:z		1									1	2
IIIb 11:k:z53							1					1
IIIb 11:l,[v],[z13]:z53								1				1
IIIb 13,23:z:1,5										2		2
IIIb 16:z10:e,n,x,z15		1	1	2	2	1			4	1	1	13
IIIb 17:l,v:e,n,x,z15					1							1
IIIb 17:z10:e,n,x,z15				1		1				1		3
IIIb 18:l,[v],[z13]:z						4					1	5
IIIb 35:i:z								1				1
IIIb 35:k:e,n,x,z15								1			2	3
IIIb 35:k:z53										1		1
IIIb 35:l,v:z35			1		1					1	4	7
IIIb 35:r:e,n,x,z15								1		1	1	3
IIIb 38:(k):-								1				1
IIIb 38:(k):z35		1		1	2			1	1	1		7
IIIb 38:l,v:z53		1	1							2	1	5
IIIb 38:r:z							1					1
IIIb 42:(k):z35								1				1
IIIb 47:k:-											1	1
IIIb 47:k:z35	1			2		1		1	3	4		12
IIIb 47:k:z53										1		1
IIIb 47:r:z											1	1
IIIb 47:r:z53					1						1	2
IIIb 47:z10:z35									1			1

TABLE 3

Laboratory-confirmed *Salmonella* isolates from human sources reported to CDC by serotype and year, 1999-2009

Serotype	1999	2000	2001	2002	2003	2004	2005	2006	2007	2008	2009	Total
IIIb 48:-:z35								1				1
IIIb 48:c:z	1		1		2					1		5
IIIb 48:i:-								1				1
IIIb 48:i:z	1	3	2	1	2	3	4	8	8	5	3	40
IIIb 48:r:e,n,x,z15									1			1
IIIb 48:r:z						1				1		2
IIIb 48:z52:z		1			1	1	1		1	1		6
IIIb 50:k:z	1	1		4	6	3		1	1	3	8	28
IIIb 50:k:z35											1	1
IIIb 50:k:z53				1				2	1			4
IIIb 50:l,v:z										1	1	2
IIIb 50:l,v:z35						1				1		2
IIIb 50:r:-		1										1
IIIb 50:r:1,5,(7)										2		2
IIIb 50:r:z				2	1	3	1	10	3	7	3	30
IIIb 50:r:z35									1			1
IIIb 50:z52:z35				1	1	1		1	1	1		6
IIIb 50:z:z52			1	1	1						2	5
IIIb 53:k:e,n,x,z15								1				1
IIIb 53:k:z					1							1
IIIb 53:z10:z									1	2		3
IIIb 53:z10:z35							1	1	1	2	4	9
IIIb 53:z52:z53									1	1		2
IIIb 58:z52:z35						1						1
IIIb 60:r:-			1									1
IIIb 60:r:e,n,x,z15	1		2	1	4	4	1	4	2	3	10	32
IIIb 60:r:z	1	1		1	2	1				1		7
IIIb 60:z52:z											1	1
IIIb 60:z52:z35										1		1
IIIb 60:z52:z53			1					2	2		1	6
IIIb 61:(k):z53			1									1
IIIb 61:-:1,5,[7]		2	1		2	1	2		6	1	3	18
IIIb 61:c:-					1							1
IIIb 61:c:1,5,(7)										1	1	2
IIIb 61:c:z35			2	1	2	1	3	1	2	2	4	18
IIIb 61:i:z				1	1				2	1	1	6
IIIb 61:i:z35										1		1
IIIb 61:i:z53								1			1	2
IIIb 61:k:1,5,[7]	4	2	3		1		2	2	1		1	16

TABLE 3

Laboratory-confirmed *Salmonella* isolates from human sources reported to CDC by serotype and year, 1999-2009

Serotype	1999	2000	2001	2002	2003	2004	2005	2006	2007	2008	2009	Total
IIIb 61:l,[v],[z13]:-				1								1
IIIb 61:l,[v],[z13]:1,5,[7]	3			17	2	2	1	11	13	8	23	80
IIIb 61:l,[v],[z13]:z35					3	1					1	5
IIIb 61:l,v:z							3					3
IIIb 61:r:z			1			1						2
IIIb 61:r:z53			2	1	1				1			5
IIIb 61:z52:z53					1	1	1	4	2	5		14
IIIb 65:(k):z	1									2	1	4
IIIb 65:(k):z35									1	1	1	3
IIIb 65:(k):z53									1		1	2
IIIb 65:z10:e,n,x,z15								2		1		3
IV 6,7:z4,z23:-		2	1		1							4
IV 6,7:z4,z24:-	4	15	7	9	8	2		1			6	52
IV 11:g,z51:-										1		1
IV 11:z4,z23:-	2		2	1	1		1	3	2	1	1	14
IV 16:z4,z23:-	1						1					2
IV 16:z4,z32:-	6	13	20	11	4	3	5	7	6	4	9	88
IV 21:g,z51:-				1								1
IV 21:z4,z23:-		1					2					3
IV 38:z4,z23:-		1										1
IV 40:z4,z23:-										1		1
IV 40:z4,z24:-								1	2	1	1	5
IV 40:z4,z32:-	2	2					1	1	1		1	8
IV 43:z36,z38:-		1				1						2
IV 43:z4,z23:-	10	3	5		3	7	1	4	1	2	3	39
IV 43:z4,z32:-				2			1				1	4
IV 44:z36,[z38]:-			1	4	2	1			1	1	1	11
IV 44:z4,z23:-	17	4	5	15	14	7	16	11	8	9	7	113
IV 44:z4,z24:-		1	1			2	1				4	9
IV 44:z4,z32:-	2	1		3		1	5	7		4	5	28
IV 45:g,z51:-	1	4	5	1	8	8	8	7	13	7	10	72
IV 48:g,z51:-	46	46	46	42	30	13	5	11	31	10	20	300
IV 48:z4,z23:-					2							2
IV 48:z4,z24:-									1			1
IV 48:z4,z32:-		1	1		1	1		3	15	2	1	25
IV 50:g,z51:-	14	6	16	23	9	9	7	16	8	9	11	128
IV 50:z4,z23:-	64	59	14	7	6	7	6	64	89	40	22	378
IV 50:z4,z32:-	1							2	1		3	7
<i>S. bongori</i> ser. 48:z35:-		1				1	2			3		7

TABLE 3

Laboratory-confirmed *Salmonella* isolates from human sources reported to CDC by serotype and year, 1999-2009

Serotype	1999	2000	2001	2002	2003	2004	2005	2006	2007	2008	2009	Total
<i>S. bongori</i> ser. 48:z81:-										3		3
<i>S. bongori</i> ser. 66:z81:-						1						1
Partially serotyped	914	1013	1288	1244	1362	1324	1684	1448	1187	1647	1101	14212
Rough, mucoid, and/or nonmotile isolates	4	14	21	48	52	61	39	110	100	131	131	711
Unknown	385	634	573	2530	3610	1999	1113	4042	3845	5639	3523	27893
Total	32828	33556	31876	34911	37442	35661	36214	40666	39970	46854	40828	410806

TABLE 3a

Partially serotyped laboratory-confirmed *Salmonella* isolates from human sources reported to CDC, by serogroup and year, 1999-2009

Serotype	1999	2000	2001	2002	2003	2004	2005	2006	2007	2008	2009	Total
Group O:11		2	46	7	1	10	35	20	4			125
Group O:13	17	18	30	22	1	11	22	15	10	15	11	172
Group O:16	44	4	5	2	2	1	7	10		2	2	79
Group O:17	1		8	2	1		1	5			2	20
Group O:18	4	3	4	4	2		2	2		3		24
Group O:21		1	2	1			5	3				12
Group O:28			1	3		4	8	5	1	1		23
Group O:30			1	2			5	2	1	1		12
Group O:35								1	1			2
Group O:38								5	1	1	1	8
Group O:39	2							3				5
Group O:40	1	8	6	3	1	1	4	6				30
Group O:41	1	3	5		1			1				11
Group O:42										1		1
Group O:43		1					1	1				3
Group O:44	5	2	9	10	5	4	1		1			37
Group O:45	2		4	4	1	2		1	1			15
Group O:47	3		1				1	2	1			8
Group O:48	10	8	13	11	5	1	18	2	1	3	1	73
Group O:50	10	17	99	72	4	18	114	47	2		1	384
Group O:51			2									2
Group O:53		1	1	1								3
Group O:56			1									1
Group O:58	1	1	1		1							4
Group O:6,14	2	5		5	1		2			1	1	17
Group O:60		1									1	2
Group O:62	1											1
Group O:63	1											1
Group O:65		1	1	1						1		4
Subspecies I	77	76	43	53	99	157	155	101	239	355	285	1640
Subspecies I, Group A	4		2	4	4	1	2	7	7	4	7	42
Subspecies I, Group B	366	503	430	561	447	404	479	528	355	572	379	5024
Subspecies I, Group C1	135	87	108	112	160	141	138	206	194	320	154	1755
Subspecies I, Group C2	46	36	103	87	213	151	191	105	88	120	84	1224
Subspecies I, Group D1	79	95	199	140	257	269	283	200	109	97	73	1801
Subspecies I, Group D2	1	1		1	1	3	5					12
Subspecies I, Group E1	17	39	55	24	39	35	35	16	17	20	10	307
Subspecies I, Group E4	2		1		9	6	7	9	2	2	1	39
Subspecies I, Group O:11								1				1

TABLE 3a

Partially serotyped laboratory-confirmed *Salmonella* isolates from human sources reported to CDC, by serogroup and year, 1999-2009

Serotype	1999	2000	2001	2002	2003	2004	2005	2006	2007	2008	2009	Total
Subspecies I, Group O:13								4				4
Subspecies I, Group O:30				1								1
Subspecies I, Group O:35				1							1	2
Subspecies I, Group O:38							1	1				2
Subspecies I, Group O:40								1				1
Subspecies I, Group O:47								1				1
Subspecies I, Group O:48					2					1		3
Subspecies I, Group O:51								1				1
Subspecies II	5	8	10	5	2	5	9	3	21	18	12	98
Subspecies IIIa	16	11	16	11	17	24	27	20	9	15	15	181
Subspecies IIIa, Group O:13					1			1				2
Subspecies IIIa, Group O:40								1				1
Subspecies IIIa, Group O:41											1	1
Subspecies IIIa, Group O:48								1				1
Subspecies IIIa, Group O:51										2		2
Subspecies IIIa, Group O:61										1		1
Subspecies IIIa, Group O:63				1								1
Subspecies IIIa/IIIb	19	36	41	40	32	25	40	29	40	37	14	353
Subspecies IIIb	9	18	6	21	26	16	32	22	17	14	22	203
Subspecies IIIb, Group O:35	4	1	5	6	1	1	1					19
Subspecies IIIb, Group O:38		2	1	3	2	1	4					13
Subspecies IIIb, Group O:42							1					1
Subspecies IIIb, Group O:47					1		3	18				22
Subspecies IIIb, Group O:50								1				1
Subspecies IIIb, Group O:53										1		1
Subspecies IIIb, Group O:57				1								1
Subspecies IIIb, Group O:60								1			1	2
Subspecies IIIb, Group O:61	4	2	5	2				1	2			16
Subspecies IIIb, Group O:65							1		1	1		3
Subspecies IV	25	22	23	19	23	33	44	33	58	38	22	340
Subspecies IV, Group O:11				1								1
Subspecies IV, Group O:43								1				1
Subspecies IV, Group O:50								2				2
Subspecies VI								2	4			6
Total	914	1013	1288	1244	1362	1324	1684	1448	1187	1647	1101	14212

TABLE 4

Laboratory-confirmed *Salmonella* isolates from human sources reported to CDC by serotype and geographic region, 2009

Serotype	New England	Mid Atlantic	East North Central	West North Central	South Atlantic	East South Central	West South Central	Mountain	Pacific	Total
Aarhus				1	1	2				4
Abaetetuba		3	1					1		5
Aberdeen		4	2	2	6					14
Abony	1		1		1					3
Abortusequi							1			1
Adelaide	2	2	6	3	1	1	1	1	26	43
Agama		5			2					7
Agbeni		1	9		1			2	2	15
Ago	2		2	2	2			3	3	14
Agona	16	53	49	32	46	12	29	44	111	392
Agoueve			1					2		3
Ahuza					1					1
Alachua	2	9		6	2	1		2	2	24
Albany	2	1	4	1	5		1	4	10	28
Albert			2	1						3
Allandale						1			1	2
Altona		1		4		1		4		10
Amager	1								4	5
Amoutive									2	2
Amsterdam	1	3					3			7
Anatum	4	22	23	16	15	7	35	50	49	221
Anatum var. 15+		1	1				2	1	1	6
Anfo		1								1
Apapa					1				4	5
Apeyeme		1	1							2
Aqua					3	1				4
Arechavaleta	1	5		1	1		5		1	14
Augustenborg			1							1
Baildon	4		1	1	4				2	12
Bardo		1		2	6			1	12	22
Bareilly	6	9	20	27	103	50	34	8	27	284
Barranquilla							1		1	2
Beaudesert		1							2	3
Bere					2			1		3
Berta	15	38	36	15	41	6	11	5	16	183
Birkenhead									4	4
Blegdam									1	1
Blockley	2	13	6	2		4	2	6	20	55
Bonariensis		1					1			2
Bonn					1					1
Bournemouth	1									1

TABLE 4

Laboratory-confirmed *Salmonella* isolates from human sources reported to CDC by serotype and geographic region, 2009

Serotype	New England	Mid Atlantic	East North Central	West North Central	South Atlantic	East South Central	West South Central	Mountain	Pacific	Total
Bovismorbificans	2	5	12	6	8	2	2	2	23	62
Bradford									1	1
Braenderup	38	139	54	38	120	17	70	49	195	720
Brandenburg	2	5	4	8	19	2	2	10	35	87
Brazil					1					1
Brazzaville					1					1
Bredeney	1	6	2	1	2	2		5	6	25
Bruck		1								1
Butantan var. 15+									1	1
California			1							1
Cannstatt		8							7	15
Carmel		1			1					2
Carrau	5	5	17	3	6	2	2	7	17	64
Cerro	1	2	5		4		1	2	7	22
Cerro var. 14+		2							2	4
Chailey				1					2	3
Chandans								1		1
Charity									1	1
Chester	1	15	3	3	4			5	10	41
Choleraesuis	1	1	1		11		7		1	22
Choleraesuis var. Decatur			1					1		2
Choleraesuis var. Kunzendorf	1	6		1					1	9
Cleveland								1		1
Colindale		1		1	1				4	7
Concord	4	2	2	6	6	1		4	13	38
Corvallis	2		1	2	1				7	13
Cotham	2	1	3	1	2			6	5	20
Cubana		2	6	6				1	5	20
Dahra			1							1
Daytona					1				1	2
Denver	2								1	3
Derby	4	21	19	13	18	9	6	8	33	131
Dublin	7	19	13	4	10		2	16	32	103
Duesseldorf		2	1							3
Duisburg									3	3
Durban	1	2		2	1	2		1	8	17
Durham					2				2	4
Duval					1					1
Ealing	1	4	10	1	4		2	1	10	33
Eastbourne		5	4	2				1	3	15
Eboko					1					1

TABLE 4

Laboratory-confirmed *Salmonella* isolates from human sources reported to CDC by serotype and geographic region, 2009

Serotype	New England	Mid Atlantic	East North Central	West North Central	South Atlantic	East South Central	West South Central	Mountain	Pacific	Total
Ebrie						1				1
Edinburg		9							1	10
Ekpoui		1								1
Emek		1			1	1				3
Emmastad							1			1
Enteritidis	695	1652	879	384	1438	337	296	352	1111	7144
Enugu						1				1
Falkensee		1								1
Fischerstrasse		1							2	3
Florida		4	1	1	1				1	8
Fluntern			1		1			1	4	7
Frankfurt									1	1
Freefalls									1	1
Freetown			1				1			2
Fresno		1							3	4
Galiema									1	1
Gallinarum			1			1				2
Gaminara	1	4	7	10	11	9	7	9	4	62
Gatow					2					2
Gatuni			1						1	2
Give	3	4	8	1	14	20	38	11	12	111
Glostrup					1			2		3
Goettingen									1	1
Goulumbo									1	1
Grumpensis		1			1			1		3
Guildford		2								2
Guinea					1					1
Haardt								1		1
Hadar	12	68	28	20	22	7	13	18	78	266
Haifa		1		1				2	2	6
Hartford	6	25	50	18	51	19	5	1	9	184
Hato			1							1
Havana	1	6	7	10	10	4	1	8	11	58
Heidelberg	40	110	127	77	158	54	67	125	653	1411
Herston	3									3
Hidalgo				1						1
Hindmarsh				1	1	1				3
Hofit						1				1
Holcomb		2				1				3
Hull		1								1
Hvittingfoss	1	16	8		5	1	5	1	16	53

TABLE 4

Laboratory-confirmed *Salmonella* isolates from human sources reported to CDC by serotype and geographic region, 2009

Serotype	New England	Mid Atlantic	East North Central	West North Central	South Atlantic	East South Central	West South Central	Mountain	Pacific	Total
Ilala									1	1
Indiana		2		1						3
Infantis	23	89	79	31	61	24	122	56	148	633
Inganda	1			1						2
Inverness		4	1		43	6		1		55
Irumu		1	1	1	1	1			3	8
Isangi				1						1
Istanbul		1	1					1	3	6
Itami									1	1
Ituri				1						1
Jangwani		1	4							5
Javiana	39	116	84	59	971	258	252	110	108	1997
Johannesburg	2	11	4	2	12	2		2	16	51
Kalamu		2								2
Kampala	1									1
Kanifing		1								1
Kedougou	1								1	2
Kentucky	3	26	11	2	10	1	1	5	14	73
Kiambu	1	22	15	9	11	7	15	6	5	91
Kingabwa				4			1		1	6
Kingston		1								1
Kintambo		3	2	1	1				3	10
Kisangani		1								1
Kisarawe			1						1	2
Kokomlemle									2	2
Kottbus		1	1						3	5
Kouka		5								5
Krefeld									2	2
Kua						1				1
Lagos		1								1
Lansing			1					2		3
Larochelle					2					2
Lattenkamp	1		1						1	3
Lexington			1		1					2
Lindenburg					1					1
Litchfield	13	73	16	21	38	10	28	19	44	262
Liverpool	1	1	1			9			2	14
Livingstone		8	3	3	3	1				18
Loanda					1					1
Lomalinda	1				1		1	5	10	18
Lome								1		1

TABLE 4

Laboratory-confirmed *Salmonella* isolates from human sources reported to CDC by serotype and geographic region, 2009

Serotype	New England	Mid Atlantic	East North Central	West North Central	South Atlantic	East South Central	West South Central	Mountain	Pacific	Total
Lomita									1	1
London	2	3	3	5				2	5	20
Luciana		1				2	1		1	5
Madelia		3	1		14		1		1	20
Manhattan		8	9	15	10	3	1		32	78
Maumee	1	2							1	4
Mbandaka	8	39	15	8	23	15	23	27	57	215
Meleagridis	1		2	5	2	1		1	4	16
Mgulani									1	1
Miami	5	20	18	5	42	8		4	7	109
Michigan								3	3	6
Mikawasima			1							1
Minnesota	2	3	1	3	6	1		5	6	27
Mississippi	4	23	4	14	64	165	152	8	11	445
Molade					1				1	2
Monschau	4		6	2	1			7	1	21
Montevideo	83	89	99	139	216	102	149	120	267	1264
Mpouto									1	1
Muenchen	33	63	45	24	253	107	73	60	151	809
Muenster	1	6	4	3	9	2	1	6	16	48
Napoli		1	1							2
Newmexico			1					4		5
Newport	120	278	239	232	1211	404	636	291	400	3811
Nigeria		2			1					3
Nima		1	1		1				2	5
Nitra		1								1
Norwich	5	7	1	20	29	35	21		2	120
Nottingham		1			1					2
Nyanza				1						1
Oakland								1		1
Offa	2					1		1		4
Ohio	7	11	10	3	11	1	1	1	9	54
Ohio var. 14+									2	2
Onireke		1							1	2
Oranienburg	72	109	104	57	80	45	130	160	142	899
Oranienburg var. 14+		1								1
Orientalis				1						1
Oslo	2	4	2	2	2	1		1	18	32
Othmarschen		1	1		2	8				12
Overschie					1					1
Pakistan		1			1					2

TABLE 4

Laboratory-confirmed *Salmonella* isolates from human sources reported to CDC by serotype and geographic region, 2009

Serotype	New England	Mid Atlantic	East North Central	West North Central	South Atlantic	East South Central	West South Central	Mountain	Pacific	Total
Panama	10	30	21	3	15	10	2	40	28	159
Paratyphi A	17	38	19	4	50	2	2	9	38	179
Paratyphi B	7	4	11	2	12	3	1	6		46
Paratyphi B var. L(+) tartrate+	15	66	56	48	18	17	94	40	82	436
Pensacola					5	4				9
Pharr					1					1
Plymouth		1								1
Poano		1						2		3
Pomona	5	27	6	3	1	2	1	12	23	80
Poona	9	38	23	4	17	6	20	78	43	238
Potsdam	1	8	2	1				1	18	31
Praha		1								1
Putten		1	2	1	12	5			4	25
Reading	3	6	8	4	5			3	24	53
Remo					1					1
Richmond		6							2	8
Rissen	3		2	1	2			15	104	127
Romanby					1			1		2
Roodepoort									2	2
Rubislaw	1	5		2	34	21	19	5	2	89
Saintpaul	42	93	115	137	188	20	75	63	121	854
Sandiego	11	24	17	8	23	3	4	25	27	142
Sanger			1							1
Saphra							1	1		2
Schwarzengrund	36	205	35	6	21	4	3	10	28	348
Senftenberg	6	16	13	11	7	4	12	18	68	155
Shubra			2					3		5
Singapore		3	2		1	1		2		9
Soerenga								2	3	5
Stanley	5	27	13	10	22	4	4	22	58	165
Stanleyville	1	2	4					1	1	9
Stoneferry			1							1
Suelldorf			1					2		3
Sundsvall	2							1		3
Takoradi					1			1	4	6
Tallahassee	1				2		1		1	5
Telekebir		1	3	3	2		1	4	12	26
Tennessee	4	11	11	3	11	4	3	8	10	65
Thompson	26	93	67	89	32	22	36	18	95	478
Tilene		1								1
Travis								1		1

TABLE 4

Laboratory-confirmed *Salmonella* isolates from human sources reported to CDC by serotype and geographic region, 2009

Serotype	New England	Mid Atlantic	East North Central	West North Central	South Atlantic	East South Central	West South Central	Mountain	Pacific	Total
Tschangu						1				1
Tucson		1						1	2	4
Typhi	15	145	31	21	78	4	5	17	116	432
Typhimurium	215	596	510	428	997	549	305	434	949	4983
Typhimurium var. 5-	78	281	144	62	104	13	240	78	137	1137
Uccle						1				1
Uganda	3	12	4	2	8	1	6	3	12	51
Urbana	2	14	2	1	5	2		6	8	40
Uzaramo			3							3
Vejle					1					1
Virchow	3	13	14	6	13	6	2	5	21	83
Virginia	1				2	4			3	10
Wagenia									1	1
Wandsworth	1		1	1					1	4
Waycross		2			1			2	1	6
Welikade					1					1
Weltevreden	6	12	3		3			2	44	70
Weltevreden var. 15+			1						2	3
Westhampton					2					2
Widemarsh									4	4
Wien									2	2
Worthington		4	2	4	4	3	2	3	7	29
I 3,10:l,v:-							1			1
I 4,[5],12:-:1,2			2		3	2			2	9
I 4,[5],12:b:-	3	4	37	1	3	18	1	21	2	90
I 4,[5],12:b:- var. L(+) tartrate+	7	8	25	1	48	2	2	7	24	124
I 4,[5],12:d:-		1			3				1	5
I 4,[5],12:e,h:-			1					1		2
I 4,[5],12:i:-	69	154	121	78	172	106	30	57	204	991
I 4,[5],12:r:-	3	2	1		8	1		1	1	17
I 6,7:-:1,2		1		1						2
I 6,7:-:1,5	5	2	4		11		3		1	26
I 6,7:-:1,6						1				1
I 6,7:-:e,n,x						1				1
I 6,7:-:e,n,z15			1				1			2
I 6,7:c:-									1	1
I 6,7:e,h:-		1				1	2			4
I 6,7:k:-		4	1		4		2	3	4	18
I 6,7:l,w:-							1			1
I 6,7:r:-					2					2
I 6,8:-:1,2	1				1	1				3

TABLE 4

Laboratory-confirmed *Salmonella* isolates from human sources reported to CDC by serotype and geographic region, 2009

Serotype	New England	Mid Atlantic	East North Central	West North Central	South Atlantic	East South Central	West South Central	Mountain	Pacific	Total
I 6,8:-:e,n,z15							1			1
I 6,8:d:-			3		1	2			2	8
I 6,8:e,h:-	1				1	1	1		3	7
I 9,12:-:1,2						1				1
I 9,12:-:1,5		2				3	2		3	10
I 9,12:l,z28:-		1	1		5	6	11	3	6	33
I 11:r:-					1					1
I 13,22:z:-		1					1			2
I 13,23:-:1,5					1		1			2
I 13,23:b:-	1			2	101	8			1	113
I 16:d:-	1									1
I 16:e,h:-	1						1			2
I 38:k:-						1				1
I 45:b:-			1					1	1	3
I 47:b:-									1	1
I 47:z4,z23:-			1				1	1		3
II 21:z10:[z6]								2	2	4
II 30:l,z28:z6									1	1
II 40:c:e,n,x,z15			1							1
II 42:z:e,n,x,z15					1					1
II 47:b:1,5									1	1
II 47:b:e,n,x,z15								2		2
II 48:a:z39								1		1
II 48:d:z6								2		2
II 50:b:z6									1	1
II 58:l,z13,z28:1,5			1							1
II 58:l,z13,z28:z6			3	1	1					5
IIIa 13,23:z4,z24:-			2				4			6
IIIa 18:z4,z23:-								2	31	33
IIIa 21:z4,z23:-									1	1
IIIa 35:z4,z23:-								1		1
IIIa 40:g,z51:-									1	1
IIIa 40:z36:-					1					1
IIIa 40:z4,z23:-	1								1	2
IIIa 40:z4,z24:-								1		1
IIIa 41:z4,z23,z32:-								1	1	2
IIIa 41:z4,z23:-		3	1	1				2	3	10
IIIa 41:z4,z24:-						1			1	2
IIIa 41:z4,z32:-								2		2
IIIa 43:z4,z23:-								2		2
IIIa 44:z4,z24:-	1									1

TABLE 4

Laboratory-confirmed *Salmonella* isolates from human sources reported to CDC by serotype and geographic region, 2009

Serotype	New England	Mid Atlantic	East North Central	West North Central	South Atlantic	East South Central	West South Central	Mountain	Pacific	Total
IIIa 44:z4,z32:-								1		1
IIIa 48:g,z51:-		1			6			2	6	15
IIIa 48:z36:-								1		1
IIIa 48:z4,z23,z32:-					1					1
IIIa 48:z4,z24:-					2			1	1	4
IIIa 50:z29:-								1		1
IIIa 50:z4,z23:-					2					2
IIIa 51:z4,z23:-					1					1
IIIa 53:z4,z23,z32:-									1	1
IIIa 53:z4,z23:-									3	3
IIIa 56:z4,z23:-					1			1		2
IIIb (6),14:z10:z			1							1
IIIb 16:z10:e,n,x,z15					1					1
IIIb 18:l,[v],[z13]:z			1							1
IIIb 35:k:e,n,x,z15		1						1		2
IIIb 35:l,v:z35					4					4
IIIb 35:r:e,n,x,z15									1	1
IIIb 38:l,v:z53			1							1
IIIb 47:k:-								1		1
IIIb 47:r:z			1							1
IIIb 47:r:z53									1	1
IIIb 48:i:z			1					1	1	3
IIIb 50:k:z		2		1					5	8
IIIb 50:k:z35		1								1
IIIb 50:l,v:z					1					1
IIIb 50:r:z				1				1	1	3
IIIb 50:z:z52			1		1					2
IIIb 53:z10:z35		1	1					1	1	4
IIIb 60:r:e,n,x,z15	1		1	1	3				4	10
IIIb 60:z52:z	1									1
IIIb 60:z52:z53									1	1
IIIb 61:-:1,5,[7]	1					1			1	3
IIIb 61:c:1,5,(7)									1	1
IIIb 61:c:z35	1		2						1	4
IIIb 61:i:z						1				1
IIIb 61:i:z53									1	1
IIIb 61:k:1,5,[7]									1	1
IIIb 61:l,[v],[z13]:1,5,[7]	2	3	7	1	2			1	7	23
IIIb 61:l,[v],[z13]:z35			1							1
IIIb 65:(k):z								1		1
IIIb 65:(k):z35			1							1

TABLE 4

Laboratory-confirmed *Salmonella* isolates from human sources reported to CDC by serotype and geographic region, 2009

Serotype	New England	Mid Atlantic	East North Central	West North Central	South Atlantic	East South Central	West South Central	Mountain	Pacific	Total
IIIb 65:(k):z53		1								1
IV 6,7:z4,z24:-				6						6
IV 11:z4,z23:-								1		1
IV 16:z4,z32:-		3			1	2		3		9
IV 40:z4,z24:-			1							1
IV 40:z4,z32:-			1							1
IV 43:z4,z23:-			1						2	3
IV 43:z4,z32:-								1		1
IV 44:z36,[z38]:-					1					1
IV 44:z4,z23:-	1	1			1			2	2	7
IV 44:z4,z24:-		3				1				4
IV 44:z4,z32:-		3			1			1		5
IV 45:g,z51:-	1		1		2			1	5	10
IV 48:g,z51:-	4	1	2	1	4			3	5	20
IV 48:z4,z32:-									1	1
IV 50:g,z51:-	2	1	3		1			1	3	11
IV 50:z4,z23:-	3	1	1	1				1	15	22
IV 50:z4,z32:-			3							3
Partially serotyped	60	139	88	138	109	37	339	179	12	1101
Rough, mucoid, and/or nonmotile isolates	5	23	16	15	14	1	3	20	34	131
Unknown	194	34	66	204	268	30	2593	40	94	3523
Total	2235	5580	3800	2734	7824	2747	6103	3022	6783	40828

TABLE 5

Laboratory-confirmed *Salmonella* isolates from human sources reported to CDC by serotype, geographic region, and state, 2009

Region=New England

Serotype	Connecticut	Maine	Massachusetts	New Hampshire	Rhode Island	Vermont	Total
Abony			1				1
Adelaide			1	1			2
Ago	1			1			2
Agona	2		9	1		4	16
Alachua			1	1			2
Albany	1		1				2
Amager			1				1
Amsterdam			1				1
Anatum	1		1	1	1		4
Arechavaleta			1				1
Baildon	1		3				4
Bareilly	2		4				6
Berta	4	1	7	2	1		15
Blockley			2				2
Bournemouth						1	1
Bovismorbificans	1		1				2
Braenderup	12	1	20	4	1		38
Brandenburg	1		1				2
Bredeney	1						1
Carrau			4	1			5
Cerro			1				1
Chester			1				1
Choleraesuis			1				1
Choleraesuis var. Kunzendorf					1		1
Concord	1		3				4
Corvallis			2				2
Cotham	1		1				2
Denver			2				2
Derby			3	1			4
Dublin	1		3	2	1		7
Durban	1						1
Ealing			1				1
Enteritidis	124	32	370	98	59	12	695
Gaminara			1				1
Give	2		1				3
Hadar	3		7		2		12
Hartford		1	2	1	2		6
Havana			1				1
Heidelberg	7	2	25	2	4		40
Herston			1		2		3

TABLE 5

Laboratory-confirmed *Salmonella* isolates from human sources reported to CDC by serotype, geographic region, and state, 2009

Region=New England

Serotype	Connecticut	Maine	Massachusetts	New Hampshire	Rhode Island	Vermont	Total
Hvittingfoss			1				1
Infantis	5		13	2	2	1	23
Inganda			1				1
Javiana	4		32	2	1		39
Johannesburg			1	1			2
Kampala				1			1
Kedougou				1			1
Kentucky			2	1			3
Kiambu			1				1
Lattenkamp				1			1
Litchfield	5	1	3	3	1		13
Liverpool				1			1
Lomalinda			1				1
London	1		1				2
Maumee	1						1
Mbandaka	2		4		1	1	8
Meleagridis			1				1
Miami	1		3			1	5
Minnesota					2		2
Mississippi	1		2		1		4
Monschau			3		1		4
Montevideo	13	2	55	9	4		83
Muenchen	6	1	11		9	6	33
Muenster	1						1
Newport	33	5	65	7	8	2	120
Norwich	1		3		1		5
Offa			2				2
Ohio	2		5				7
Oranienburg	31	4	28	3	6		72
Oslo	1		1				2
Panama	1		5	1	2	1	10
Paratyphi A	1		14	2			17
Paratyphi B	2	2	1	2			7
Paratyphi B var. L(+) tartrate+	3		11	1			15
Pomona	1		3			1	5
Poona	4		5				9
Potsdam			1				1
Reading	1		2				3
Rissen			1	2			3
Rubislaw			1				1

TABLE 5

Laboratory-confirmed *Salmonella* isolates from human sources reported to CDC by serotype, geographic region, and state, 2009

Region=New England

Serotype	Connecticut	Maine	Massachusetts	New Hampshire	Rhode Island	Vermont	Total
Saintpaul	15	1	17	3	5	1	42
Sandiego	3		7	1			11
Schwarzengrund	10		20	4	2		36
Senftenberg			6				6
Stanley	1		3		1		5
Stanleyville			1				1
Sundsvall			1	1			2
Tallahassee					1		1
Tennessee	1		1	2			4
Thompson	4		16	1	4	1	26
Typhi	6		7	1	1		15
Typhimurium	62	7	97	22	24	3	215
Typhimurium var. 5-	19	4	52		3		78
Uganda			3				3
Urbana	1		1				2
Virchow	1		2				3
Virginia						1	1
Wandsworth			1				1
Weltevreden	2		3		1		6
I 4,[5],12:b:-	3						3
I 4,[5],12:b:- var. L(+) tartrate+	2		3		2		7
I 4,[5],12:i:-	10		46	4	9		69
I 4,[5],12:r:-	2		1				3
I 6,7:-:1,5	2		3				5
I 6,8:-:1,2	1						1
I 6,8:e,h:-			1				1
I 13,23:b:-				1			1
I 16:d:-	1						1
I 16:e,h:-	1						1
IIIa 40:z4,z23:-			1				1
IIIa 44:z4,z24:-			1				1
IIIb 60:r:e,n,x,z15			1				1
IIIb 60:z52:z	1						1
IIIb 61:-:1,5,[7]	1						1
IIIb 61:c:z35			1				1
IIIb 61:l,[v],[z13]:1,5,[7]			2				2
IV 44:z4,z23:-			1				1
IV 45:g,z51:-			1				1
IV 48:g,z51:-	1		3				4
IV 50:g,z51:-	1				1		2

TABLE 5

Laboratory-confirmed *Salmonella* isolates from human sources reported to CDC by serotype, geographic region, and state, 2009

Region=New England

Serotype	Connecticut	Maine	Massachusetts	New Hampshire	Rhode Island	Vermont	Total
IV 50:z4,z23:-			3				3
Partially serotyped	1	37	1	7		14	60
Rough, mucoid, and/or nonmotile isolates	2		2		1		5
Unknown	4	100	90				194
Total	446	201	1167	203	168	50	2235

TABLE 5

Laboratory-confirmed *Salmonella* isolates from human sources reported to CDC by serotype, geographic region, and state, 2009

Region=Mid Atlantic

Serotype	States			Total
	New Jersey	New York	Pennsylvania	
Abaetetuba		1	2	3
Aberdeen	1	2	1	4
Adelaide	1		1	2
Agama		5		5
Agbeni		1		1
Agona	13	20	20	53
Alachua	2	6	1	9
Albany	1			1
Altona	1			1
Amsterdam		3		3
Anatum	1	10	11	22
Anatum var. 15+	1			1
Anfo		1		1
Apeyeme	1			1
Arechavaleta		4	1	5
Bardo		1		1
Bareilly		6	3	9
Beaudesert			1	1
Berta	7	16	15	38
Blockley		13		13
Bonariensis		1		1
Bovismorbificans		1	4	5
Braenderup	41	70	28	139
Brandenburg		2	3	5
Bredeney	1	4	1	6
Bruck	1			1
Cannstatt		8		8
Carmel		1		1
Carrau	3	1	1	5
Cerro		1	1	2
Cerro var. 14+			2	2
Chester		9	6	15
Choleraesuis		1		1
Choleraesuis var. Kunzendorf		6		6
Colindale	1			1
Concord		2		2
Cotham		1		1
Cubana		1	1	2
Derby	2	16	3	21

TABLE 5

Laboratory-confirmed *Salmonella* isolates from human sources reported to CDC by serotype, geographic region, and state, 2009

Region=Mid Atlantic

Serotype	States			Total
	New Jersey	New York	Pennsylvania	
Dublin	4	5	10	19
Duesseldorf	2			2
Durban		1	1	2
Ealing		1	3	4
Eastbourne	2	2	1	5
Edinburg			9	9
Ekpoui			1	1
Emek	1			1
Enteritidis	387	741	524	1652
Falkensee			1	1
Fischerstrasse		1		1
Florida	4			4
Fresno			1	1
Gaminara			4	4
Give		3	1	4
Grumpensis		1		1
Guildford	2			2
Hadar	14	41	13	68
Haifa	1			1
Hartford	1	10	14	25
Havana	2	1	3	6
Heidelberg	34	37	39	110
Holcomb		1	1	2
Hull			1	1
Hvittingfoss	6	7	3	16
Indiana			2	2
Infantis	22	49	18	89
Inverness	1	2	1	4
Irumu		1		1
Istanbul		1		1
Jangwani			1	1
Javiana	23	42	51	116
Johannesburg	2	7	2	11
Kalamu		2		2
Kanifing	1			1
Kentucky	4	19	3	26
Kiambu	6	14	2	22
Kingston			1	1
Kintambo		3		3

TABLE 5

Laboratory-confirmed *Salmonella* isolates from human sources reported to CDC by serotype, geographic region, and state, 2009

Region=Mid Atlantic

Serotype	States			Total
	New Jersey	New York	Pennsylvania	
Kisangani		1		1
Kottbus	1			1
Kouka		5		5
Lagos		1		1
Litchfield	6	28	39	73
Liverpool		1		1
Livingstone	1	1	6	8
London	1	2		3
Luciana			1	1
Madelia		3		3
Manhattan	2	3	3	8
Maumee	1		1	2
Mbandaka	5	23	11	39
Miami	6	7	7	20
Minnesota	2		1	3
Mississippi	2	11	10	23
Montevideo	16	49	24	89
Muenchen	14	24	25	63
Muenster		5	1	6
Napoli	1			1
Newport	73	95	110	278
Nigeria		2		2
Nima	1			1
Nitra		1		1
Norwich	2	4	1	7
Nottingham		1		1
Ohio	3	5	3	11
Onireke			1	1
Oranienburg	25	40	44	109
Oranienburg var. 14+	1			1
Oslo	1	2	1	4
Othmarschen		1		1
Pakistan		1		1
Panama	7	15	8	30
Paratyphi A	11	16	11	38
Paratyphi B	3	1		4
Paratyphi B var. L(+) tartrate+	6	18	42	66
Plymouth			1	1
Poano			1	1

TABLE 5

Laboratory-confirmed *Salmonella* isolates from human sources reported to CDC by serotype, geographic region, and state, 2009

Region=Mid Atlantic

Serotype	States			Total
	New Jersey	New York	Pennsylvania	
Pomona	3	17	7	27
Poona	9	19	10	38
Potsdam	2	6		8
Praha	1			1
Putten		1		1
Reading	2	2	2	6
Richmond	2	2	2	6
Rubislaw		4	1	5
Saintpaul	22	41	30	93
Sandiego	9	9	6	24
Schwarzengrund	32	155	18	205
Senftenberg	4	6	6	16
Singapore		2	1	3
Stanley	7	8	12	27
Stanleyville		2		2
Telelkebir			1	1
Tennessee	1	6	4	11
Thompson	24	44	25	93
Tilene		1		1
Tucson		1		1
Typhi	38	87	20	145
Typhimurium	95	238	263	596
Typhimurium var. 5-	70	93	118	281
Uganda	2	8	2	12
Urbana	6	3	5	14
Virchow	2	7	4	13
Waycross		1	1	2
Weltevreden	3	7	2	12
Worthington	2		2	4
I 4,[5],12:b:-		4		4
I 4,[5],12:b:- var. L(+) tartrate+			8	8
I 4,[5],12:d:-		1		1
I 4,[5],12:i:-		92	62	154
I 4,[5],12:r:-		2		2
I 6,7:-:1,2		1		1
I 6,7:-:1,5		2		2
I 6,7:e,h:-			1	1
I 6,7:k:-		1	3	4
I 9,12:-:1,5		2		2

TABLE 5

Laboratory-confirmed *Salmonella* isolates from human sources reported to CDC by serotype, geographic region, and state, 2009

Region=Mid Atlantic

Serotype	States			Total
	New Jersey	New York	Pennsylvania	
I 9,12:l,z28:-			1	1
I 13,22:z:-		1		1
IIIa 41:z4,z23:-		3		3
IIIa 48:g,z51:-			1	1
IIIb 35:k:e,n,x,z15			1	1
IIIb 50:k:z		2		2
IIIb 50:k:z35		1		1
IIIb 53:z10:z35		1		1
IIIb 61:l,[v],[z13]:1,5,[7]		1	2	3
IIIb 65:(k):z53			1	1
IV 16:z4,z32:-		1	2	3
IV 44:z4,z23:-			1	1
IV 44:z4,z24:-			3	3
IV 44:z4,z32:-		2	1	3
IV 48:g,z51:-			1	1
IV 50:g,z51:-		1		1
IV 50:z4,z23:-		1		1
Partially serotyped	71	37	31	139
Rough, mucoid, and/or nonmotile isolates		12	11	23
Unknown	4	29	1	34
Total	1199	2539	1842	5580

TABLE 5

Laboratory-confirmed *Salmonella* isolates from human sources reported to CDC by serotype, geographic region, and state, 2009

Region=East North Central

Serotype	States					Total
	Illinois	Indiana	Michigan	Ohio	Wisconsin	
Abaetetuba					1	1
Aberdeen		2				2
Abony					1	1
Adelaide	4		2			6
Agbeni	8			1		9
Ago					2	2
Agona	19	5	5	6	14	49
Agoueve	1					1
Albany		1		2	1	4
Albert		2				2
Anatum	3	3	7	2	8	23
Anatum var. 15+			1			1
Apeyeme					1	1
Augustenborg					1	1
Baildon			1			1
Bareilly	4	8	3	1	4	20
Berta	15	3	3	11	4	36
Blockley	1	2	2		1	6
Bovismorbificans	5	3	1	2	1	12
Braenderup	16	6	16	8	8	54
Brandenburg			1		3	4
Bredeney	2					2
California			1			1
Carrau	6		3		8	17
Cerro	3		1		1	5
Chester	2	1				3
Choleraesuis					1	1
Choleraesuis var. Decatur					1	1
Concord	1				1	2
Corvallis					1	1
Cotham			2		1	3
Cubana		1		3	2	6
Dahra			1			1
Derby	5	2	6	2	4	19
Dublin	3	1	5	1	3	13
Duesseldorf		1				1
Ealing	3	1	1	2	3	10
Eastbourne	4					4
Enteritidis	254	125	217	160	123	879
Florida	1					1

TABLE 5

Laboratory-confirmed *Salmonella* isolates from human sources reported to CDC by serotype, geographic region, and state, 2009

Region=East North Central

Serotype	States					Total
	Illinois	Indiana	Michigan	Ohio	Wisconsin	
Fluntern					1	1
Freetown	1					1
Gallinarum		1				1
Gaminara	2	2	3			7
Gatuni			1			1
Give	2	1	3	1	1	8
Hadar	9	4	6	3	6	28
Hartford	9	17	12	8	4	50
Hato	1					1
Havana	1	1	3	2		7
Heidelberg	43	20	23	25	16	127
Hvittingfoss	4	2		1	1	8
Infantis	36	9	17	6	11	79
Inverness			1			1
Irumu	1					1
Istanbul	1					1
Jangwani				1	3	4
Javiana	23	14	18	14	15	84
Johannesburg	1		1		2	4
Kentucky	5		3	1	2	11
Kiambu	3	2	4	4	2	15
Kintambo		1		1		2
Kisarawe	1					1
Kottbus				1		1
Lansing			1			1
Lattenkamp	1					1
Lexington					1	1
Litchfield	5	3	4	1	3	16
Liverpool		1				1
Livingstone	1		1		1	3
London	2	1				3
Madelia			1			1
Manhattan	3	4		1	1	9
Mbandaka	6		7		2	15
Meleagridis	1		1			2
Miami	2	4	8	2	2	18
Mikawasima					1	1
Minnesota		1				1
Mississippi	2			1	1	4
Monschau	1			4	1	6

TABLE 5

Laboratory-confirmed *Salmonella* isolates from human sources reported to CDC by serotype, geographic region, and state, 2009

Region=East North Central

Serotype	States					Total
	Illinois	Indiana	Michigan	Ohio	Wisconsin	
Montevideo	24	13	25	13	24	99
Muenchen	24	6	5	7	3	45
Muenster	1	1	2			4
Napoli					1	1
Newmexico					1	1
Newport	59	48	52	33	47	239
Nima			1			1
Norwich					1	1
Ohio	9			1		10
Oranienburg	27	11	19	31	16	104
Oslo					2	2
Othmarschen					1	1
Panama	4	2	9	3	3	21
Paratyphi A	6	3	7		3	19
Paratyphi B	3		8			11
Paratyphi B var. L(+) tartrate+	11	13		21	11	56
Pomona	3	1	1		1	6
Poona	7	3	6	4	3	23
Potsdam		1		1		2
Putten			2			2
Reading	1	2	4		1	8
Rissen	1		1			2
Saintpaul	28	8	58	6	15	115
Sandiego	4	1	7	2	3	17
Sanger	1					1
Schwarzengrund	13	3	7	5	7	35
Senftenberg	2	2	3	1	5	13
Shubra	1			1		2
Singapore	2					2
Stanley	4	2	5	2		13
Stanleyville			4			4
Stoneferry				1		1
Suelldorf			1			1
Telelkebir				1	2	3
Tennessee		2	7	1	1	11
Thompson	18	13	15	8	13	67
Typhi	14	1	10		6	31
Typhimurium	142	93	119	101	55	510
Typhimurium var. 5-	29	30	27	30	28	144
Uganda	2	1	1			4

TABLE 5

Laboratory-confirmed *Salmonella* isolates from human sources reported to CDC by serotype, geographic region, and state, 2009

Region=East North Central

Serotype	States					Total
	Illinois	Indiana	Michigan	Ohio	Wisconsin	
Urbana					2	2
Uzaramo	3					3
Virchow	4	2	5	3		14
Wandsworth	1					1
Weltevreden	1			2		3
Weltevreden var. 15+					1	1
Worthington	1	1				2
I 4,[5],12:-:1,2	2					2
I 4,[5],12:b:-	11	1	25			37
I 4,[5],12:b:- var. L(+) tartrate+		10			15	25
I 4,[5],12:e,h:-	1					1
I 4,[5],12:i:-	41	29	33		18	121
I 4,[5],12:r:-					1	1
I 6,7:-:1,5	3				1	4
I 6,7:-:e,n,z15	1					1
I 6,7:k:-	1					1
I 6,8:d:-	1	1			1	3
I 9,12:l,z28:-	1					1
I 45:b:-	1					1
I 47:z4,z23:-		1				1
II 40:c:e,n,x,z15	1					1
II 58:l,z13,z28:1,5					1	1
II 58:l,z13,z28:z6	1	1			1	3
IIIa 13,23:z4,z24:-		1			1	2
IIIa 41:z4,z23:-					1	1
IIIb 18:l,[v],[z13]:z		1				1
IIIb 38:l,v:z53		1				1
IIIb 47:r:z					1	1
IIIb 48:i:z	1					1
IIIb 50:z:z52					1	1
IIIb 53:z10:z35					1	1
IIIb 60:r:e,n,x,z15	1					1
IIIb 61:c:z35	2					2
IIIb 61:l,[v],[z13]:1,5,[7]	4	1			2	7
IIIb 61:l,[v],[z13]:z35					1	1
IIIb 65:(k):z35	1					1
IV 40:z4,z24:-					1	1
IV 40:z4,z32:-	1					1
IV 43:z4,z23:-					1	1
IV 45:g,z51:-	1					1

TABLE 5

Laboratory-confirmed *Salmonella* isolates from human sources reported to CDC by serotype, geographic region, and state, 2009

Region=East North Central

Serotype	States					Total
	Illinois	Indiana	Michigan	Ohio	Wisconsin	
IV 48:g,z51:-	1				1	2
IV 50:g,z51:-	1		1		1	3
IV 50:z4,z23:-		1				1
IV 50:z4,z32:-	3					3
Partially serotyped	26		60	1	1	88
Rough, mucoid, and/or nonmotile isolates	2	3	2		9	16
Unknown	6	3	8	49		66
Total	1092	572	937	606	592	3799

TABLE 5

Laboratory-confirmed *Salmonella* isolates from human sources reported to CDC by serotype, geographic region, and state, 2009

Region=West North Central

Serotype	States							Total
	Iowa	Kansas	Minnesota	Missouri	Nebraska	North Dakota	South Dakota	
Aarhus		1						1
Aberdeen			2					2
Adelaide	1		2					3
Ago						2		2
Agona	5	3	11	8		2	3	32
Alachua				2			4	6
Albany			1					1
Albert			1					1
Altona	3		1					4
Anatum	2	3	2	7			2	16
Arechavaleta				1				1
Baildon	1							1
Bardo			1	1				2
Bareilly		2	4	20	1			27
Berta	6		4	5				15
Blockley	1			1				2
Bovismorbificans	5			1				6
Braenderup		6	16	14			2	38
Brandenburg			4	4				8
Bredeney							1	1
Carrau	1		2					3
Chailey			1					1
Chester				1		1	1	3
Choleraesuis var. Kunzendorf	1							1
Colindale				1				1
Concord	1		4	1				6
Corvallis		1	1					2
Cotham			1					1
Cubana	1		4	1				6
Derby	2		4	3			4	13
Dublin			1	3				4
Durban	1			1				2
Ealing				1				1
Eastbourne		2						2
Enteritidis	77	31	131	106	4	8	27	384
Florida		1						1
Gaminara	1		4	5				10
Give			1					1
Hadar	3	1	10	2		2	2	20

TABLE 5

Laboratory-confirmed *Salmonella* isolates from human sources reported to CDC by serotype, geographic region, and state, 2009

Region=West North Central

Serotype	States							Total
	Iowa	Kansas	Minnesota	Missouri	Nebraska	North Dakota	South Dakota	
Haifa			1					1
Hartford	5	2	6	4			1	18
Havana	1	1	4	2			2	10
Heidelberg	9	5	14	36		8	5	77
Hidalgo		1						1
Hindmarsh	1							1
Indiana				1				1
Infantis	6	3	11	9		1	1	31
Inganda	1							1
Irumu	1							1
Isangi			1					1
Ituri						1		1
Javiana	6	4	6	37		2	4	59
Johannesburg	1		1					2
Kentucky	1		1					2
Kiambu	2		3	3		1		9
Kingabwa			1	3				4
Kintambo				1				1
Litchfield		1	6	11	1		2	21
Livingstone				3				3
London				1			4	5
Manhattan		1	2	11	1			15
Mbandaka	1		3	3			1	8
Meleagridis				5				5
Miami			2	2			1	5
Minnesota			1	2				3
Mississippi			1	13				14
Monschau			1	1				2
Montevideo	15	10	31	21	2	48	12	139
Muenchen		5	8	7		1	3	24
Muenster	1		1			1		3
Newport	32	22	50	94	1	10	23	232
Norwich		4	2	14				20
Nyanza			1					1
Ohio	1		1			1		3
Oranienburg	13	1	14	24	1	1	3	57
Orientalis						1		1
Oslo				2				2
Panama			2	1				3

TABLE 5

Laboratory-confirmed *Salmonella* isolates from human sources reported to CDC by serotype, geographic region, and state, 2009

Region=West North Central

Serotype	States							Total
	Iowa	Kansas	Minnesota	Missouri	Nebraska	North Dakota	South Dakota	
Paratyphi A			3	1				4
Paratyphi B							2	2
Paratyphi B var. L(+) tartrate+	13	2	9	23			1	48
Pomona	1		1	1				3
Poona	1		1	1			1	4
Potsdam			1					1
Putten			1					1
Reading		1	3					4
Rissen			1					1
Rubislaw				2				2
Saintpaul	39	13	19	15	8	5	38	137
Sandiego	2		1	4		1		8
Schwarzengrund	1	1	2	2				6
Senftenberg	1	1	6	1		2		11
Stanley	2	1	3	4				10
Teitelkebir			2	1				3
Tennessee		1		2				3
Thompson	14	9	13	49			4	89
Typhi			7	12			2	21
Typhimurium	35	32	82	199	1	22	57	428
Typhimurium var. 5-	26	9	27					62
Uganda			1	1				2
Urbana	1							1
Virchow			3	3				6
Wandsworth				1				1
Worthington			1	2			1	4
I 4, ₅ , ₁₂ :b:-	1							1
I 4, ₅ , ₁₂ :b:- var. L(+) tartrate+			1					1
I 4, ₅ , ₁₂ :i:-	10	1	25	42				78
I 6,7:-:1,2			1					1
I 13,23:b:-		1		1				2
II 58:l,z ₁₃ ,z ₂₈ :z ₆				1				1
IIIa 41:z ₄ ,z ₂₃ :-				1				1
IIIb 50:k:z				1				1
IIIb 50:r:z			1					1
IIIb 60:r:e,n,x,z ₁₅		1						1
IIIb 61:l, _v , _[z13] :1,5, _[7]				1				1
IV 6,7:z ₄ ,z ₂₄ :-			6					6
IV 48:g,z ₅₁ :-				1				1

TABLE 5

Laboratory-confirmed *Salmonella* isolates from human sources reported to CDC by serotype, geographic region, and state, 2009

Region=West North Central

Serotype	States							Total
	Iowa	Kansas	Minnesota	Missouri	Nebraska	North Dakota	South Dakota	
IV 50:z4,z23:-						1		1
Partially serotyped	6	39	13	2	74		4	138
Rough, mucoid, and/or nonmotile isolates			6	9				15
Unknown	2		7	5	180	9	1	204
Total	364	223	635	888	274	131	219	2734

TABLE 5

Laboratory-confirmed *Salmonella* isolates from human sources reported to CDC by serotype, geographic region, and state, 2009

Region=South Atlantic

Serotype	States									Total
	Delaware	District of Columbia	Florida	Georgia	Maryland	North Carolina	South Carolina	Virginia	West Virginia	
Aarhus							1			1
Aberdeen						1	5			6
Abony						1				1
Adelaide				1						1
Agama				1			1			2
Agbeni			1							1
Ago				1				1		2
Agona	1		1	9	3	16	2	14		46
Ahuza				1						1
Alachua							1	1		2
Albany				1				4		5
Anatum	1		2	4	2	4		2		15
Apapa								1		1
Aqua				1		1	1			3
Arechavaleta							1			1
Baildon				1	2			1		4
Bardo				2	2	1		1		6
Bareilly	2	1	2	15	8	40	2	27	6	103
Bere							2			2
Berta	2		2	6	5	10	1	14	1	41
Bonn		1								1
Bovismorbificans				2			2	2	2	8
Braenderup	3			42	7	26	10	26	6	120
Brandenburg				5		6	2	1	5	19
Brazil				1						1
Brazzaville									1	1
Bredeney						2				2
Carmel				1						1
Carrau				1		3		2		6
Cerro				1		1	1	1		4
Chester			1			2	1			4
Choleraesuis				1		10				11
Colindale								1		1
Concord				1		5				6
Corvallis								1		1
Cotham				1				1		2
Daytona								1		1
Derby			1	6	2	6	1	2		18

TABLE 5

Laboratory-confirmed *Salmonella* isolates from human sources reported to CDC by serotype, geographic region, and state, 2009

Region=South Atlantic

Serotype	States									Total
	Delaware	District of Columbia	Florida	Georgia	Maryland	North Carolina	South Carolina	Virginia	West Virginia	
Dublin				2	3			5		10
Durban				1						1
Durham				1	1					2
Duval							1			1
Ealing							1	3		4
Eboko								1		1
Emek				1						1
Enteritidis	34	37	3	235	260	349	147	286	87	1438
Florida				1						1
Fluntern								1		1
Gaminara			1	3		2	5			11
Gatow									2	2
Give				6	1	3	4			14
Glostrup								1		1
Grumpensis					1					1
Guinea								1		1
Hadar	1		1	10	1	8		1		22
Hartford	1			17	6	14	6	7		51
Havana				1	1	2		6		10
Heidelberg	2		4	37	12	49	16	34	4	158
Hindmarsh								1		1
Hvittingfoss				3				2		5
Infantis	3	1	1	15	5	24	3	9		61
Inverness				7	1	23	12			43
Irumu		1								1
Javiana	9	1	5	383	24	281	194	68	6	971
Johannesburg	1			2		4		5		12
Kentucky				4			3	3		10
Kiambu				2	1	3		5		11
Kintambo									1	1
Larochelle				1					1	2
Lexington						1				1
Lindenburg				1						1
Litchfield	1		1	5	3	6	7	14	1	38
Livingstone				1		2				3
Loanda							1			1
Lomalinda						1				1
Madelia				2	1	3	8			14

TABLE 5

Laboratory-confirmed *Salmonella* isolates from human sources reported to CDC by serotype, geographic region, and state, 2009

Region=South Atlantic

Serotype	States									Total
	Delaware	District of Columbia	Florida	Georgia	Maryland	North Carolina	South Carolina	Virginia	West Virginia	
Manhattan				2		5	2	1		10
Mbandaka	1			12	1	2	3	1	3	23
Meleagridis						2				2
Miami	1		2	19	4	1	7	2	6	42
Minnesota				3		3				6
Mississippi				29	2	9	22	1	1	64
Molade						1				1
Monschau				1						1
Montevideo	5	2	2	71	1	67	56	6	6	216
Muenchen	1	2	1	100	8	74	38	25	4	253
Muenster			4			1		4		9
Newport	30	3	4	351	55	406	225	127	10	1211
Nigeria				1						1
Nima			1							1
Norwich				9	6	9	2	3		29
Nottingham				1						1
Ohio				1		7		3		11
Oranienburg	1	3		20	10	19	6	20	1	80
Oslo					1			1		2
Othmarschen									2	2
Overschie							1			1
Pakistan							1			1
Panama				5	3	1		6		15
Paratyphi A		7	6	4	11	2	2	17	1	50
Paratyphi B					1	2	1	1	7	12
Paratyphi B var. L(+) tartrate+			1	4	3	4	4	2		18
Pensacola				3		1		1		5
Pharr						1				1
Pomona							1			1
Poona				3	1	2	1	6	4	17
Putten						12				12
Reading	1		2					2		5
Remo				1						1
Rissen								1	1	2
Romanby								1		1
Rubislaw	1		4	15	2	6	6			34
Saintpaul	1	1	10	55	13	20	53	31	4	188
Sandiego			1	5	3	3	4	7		23

TABLE 5

Laboratory-confirmed *Salmonella* isolates from human sources reported to CDC by serotype, geographic region, and state, 2009

Region=South Atlantic

Serotype	States									Total
	Delaware	District of Columbia	Florida	Georgia	Maryland	North Carolina	South Carolina	Virginia	West Virginia	
Schwarzengrund	1			7	4	5	1	2	1	21
Senftenberg				1		3		1	2	7
Singapore				1						1
Stanley		1		4		8	5	1	3	22
Takoradi						1				1
Tallahassee			1	1						2
Telekebir						1		1		2
Tennessee				2		5	2	2		11
Thompson		2		3	7	5	2	11	2	32
Typhi		3	20	10	17	12		16		78
Typhimurium	17	12	16	207	69	337	89	209	41	997
Typhimurium var. 5-					29			75		104
Uganda	1				1	4	1	1		8
Urbana				3				2		5
Vejle				1						1
Virchow				2	1	1	2	6	1	13
Virginia				2						2
Waycross				1						1
Welikade			1							1
Weltevreden				1			1	1		3
Westhampton									2	2
Worthington	1					2		1		4
I 4,[5],12:-:1,2					2			1		3
I 4,[5],12:b:-		2		1						3
I 4,[5],12:b:- var. L(+) tartrate+	2			23	2			21		48
I 4,[5],12:d:-					3					3
I 4,[5],12:i:-	4	2		53	42	16		47	8	172
I 4,[5],12:r:-				3	4			1		8
I 6,7:-:1,5					11					11
I 6,7:k:-				2	2					4
I 6,7:r:-				1				1		2
I 6,8:-:1,2				1						1
I 6,8:d:-				1						1
I 6,8:e,h:-				1						1
I 9,12:l,z28:-				5						5
I 11:r:-								1		1
I 13,23:-:1,5				1						1
I 13,23:b:-				87		13		1		101

TABLE 5

Laboratory-confirmed *Salmonella* isolates from human sources reported to CDC by serotype, geographic region, and state, 2009

Region=South Atlantic

Serotype	States									Total
	Delaware	District of Columbia	Florida	Georgia	Maryland	North Carolina	South Carolina	Virginia	West Virginia	
II 42:z:e,n,x,z15					1					1
II 58:l,z13,z28:z6								1		1
IIIa 40:z36:-								1		1
IIIa 48:g,z51:-								6		6
IIIa 48:z4,z23,z32:-				1						1
IIIa 48:z4,z24:-					1			1		2
IIIa 50:z4,z23:-				1		1				2
IIIa 51:z4,z23:-				1						1
IIIa 56:z4,z23:-						1				1
IIIb 16:z10:e,n,x,z15								1		1
IIIb 35:l,v:z35				2		1		1		4
IIIb 50:l,v:z									1	1
IIIb 50:z:z52					1					1
IIIb 60:r:e,n,x,z15				1	2					3
IIIb 61:l,[v],[z13]:1,5,[7]				1				1		2
IV 16:z4,z32:-						1				1
IV 44:z36,[z38]:-								1		1
IV 44:z4,z23:-								1		1
IV 44:z4,z32:-				1						1
IV 45:g,z51:-				1				1		2
IV 48:g,z51:-	1				1	1		1		4
IV 50:g,z51:-								1		1
Partially serotyped				6		1	99	1	2	109
Rough, mucoid, and/or nonmotile isolates	1			4		5		4		14
Unknown	11			25	62	152		8	10	268
Total	142	82	102	2030	739	2146	1079	1258	246	7824

TABLE 5

Laboratory-confirmed *Salmonella* isolates from human sources reported to CDC by serotype, geographic region, and state, 2009

Region=East South Central

Serotype	States				Total
	Alabama	Kentucky	Mississippi	Tennessee	
Aarhus	2				2
Adelaide				1	1
Agona	2	6		4	12
Alachua			1		1
Allandale	1				1
Altona		1			1
Anatum	3	2		2	7
Aqua	1				1
Bareilly	9	8	10	23	50
Berta	2	2		2	6
Blockley	2	2			4
Bovismorbificans	1	1			2
Braenderup	11		1	5	17
Brandenburg			2		2
Bredeney	2				2
Carrau				2	2
Concord	1				1
Derby	7		1	1	9
Durban		2			2
Ebrie				1	1
Emek	1				1
Enteritidis	151	86	29	71	337
Enugu	1				1
Gallinarum				1	1
Gaminara	5	1	3		9
Give	9		11		20
Hadar	2	3	2		7
Hartford	7	5	3	4	19
Havana		3		1	4
Heidelberg	18	12	6	18	54
Hindmarsh				1	1
Hofit	1				1
Holcomb		1			1
Hvittingfoss			1		1
Infantis	9	7	2	6	24
Inverness	3		3		6
Irumu		1			1
Javiana	148	23	65	22	258
Johannesburg	1	1			2
Kentucky		1			1

TABLE 5

Laboratory-confirmed *Salmonella* isolates from human sources reported to CDC by serotype, geographic region, and state, 2009

Region=East South Central

Serotype	States				Total
	Alabama	Kentucky	Mississippi	Tennessee	
Kiambu		1	5	1	7
Kua				1	1
Litchfield	5		2	3	10
Liverpool				9	9
Livingstone	1				1
Luciana			2		2
Manhattan	1	1		1	3
Mbandaka	6	5	1	3	15
Meleagridis	1				1
Miami	6	2			8
Minnesota	1				1
Mississippi	45	1	101	18	165
Montevideo	69	3	18	12	102
Muenchen	75	4	25	3	107
Muenster	1	1			2
Newport	183	24	115	82	404
Norwich	7	4	13	11	35
Offa		1			1
Ohio		1			1
Oranienburg	15	17	1	12	45
Oslo	1				1
Othmarschen			8		8
Panama		1	6	3	10
Paratyphi A	1	1			2
Paratyphi B	1		1	1	3
Paratyphi B var. L(+) tartrate+	7	8	1	1	17
Pensacola	2		1	1	4
Pomona	2				2
Poona	2	2		2	6
Putten	2	2		1	5
Rubislaw	3		18		21
Saintpaul	8	3	2	7	20
Sandiego	2	1			3
Schwarzengrund	4				4
Senftenberg	2	2			4
Singapore		1			1
Stanley	1	1		2	4
Tennessee	1	2		1	4
Thompson	5	7	1	9	22
Tschangu	1				1

TABLE 5

Laboratory-confirmed *Salmonella* isolates from human sources reported to CDC by serotype, geographic region, and state, 2009

Region=East South Central

Serotype	States				Total
	Alabama	Kentucky	Mississippi	Tennessee	
Typhi			1	3	4
Typhimurium	220	86	120	123	549
Typhimurium var. 5-		4	9		13
Uccle	1				1
Uganda				1	1
Urbana		2			2
Virchow		2		4	6
Virginia			4		4
Worthington		3			3
I 4,[5],12:-:1,2			2		2
I 4,[5],12:b:-	6		12		18
I 4,[5],12:b:- var. L(+) tartrate+			1	1	2
I 4,[5],12:i:-	47	5	27	27	106
I 4,[5],12:r:-	1				1
I 6,7:-:1,6			1		1
I 6,7:-:e,n,x			1		1
I 6,7:e,h:-			1		1
I 6,8:-:1,2			1		1
I 6,8:d:-			2		2
I 6,8:e,h:-				1	1
I 9,12:-:1,2			1		1
I 9,12:-:1,5			3		3
I 9,12:l,z28:-	2		4		6
I 13,23:b:-	7		1		8
I 38:k:-	1				1
IIIa 41:z4,z24:-	1				1
IIIb 61:-:1,5,[7]	1				1
IIIb 61:i:z	1				1
IV 16:z4,z32:-		2			2
IV 44:z4,z24:-			1		1
Partially serotyped	2	32		3	37
Rough, mucoid, and/or nonmotile isolates			1		1
Unknown		2	3	25	30
Total	1151	402	657	537	2747

TABLE 5

Laboratory-confirmed *Salmonella* isolates from human sources reported to CDC by serotype, geographic region, and state, 2009

Region=West South Central

Serotype	States				Total
	Arkansas	Louisiana	Oklahoma	Texas	
Abortusequi				1	1
Adelaide			1		1
Agona	3	5	4	17	29
Albany	1				1
Amsterdam			3		3
Anatum	2	6	5	22	35
Anatum var. 15+				2	2
Arechavaleta			5		5
Bareilly	21	3	10		34
Barranquilla	1				1
Berta	2		5	4	11
Blockley		2			2
Bonariensis			1		1
Bovismorbificans	1			1	2
Braenderup	4	15	7	44	70
Brandenburg			1	1	2
Carrau	1	1			2
Cerro	1				1
Choleraesuis				7	7
Derby		2		4	6
Dublin	1			1	2
Ealing			2		2
Emmastad	1				1
Enteritidis	34	33	74	155	296
Freetown		1			1
Gaminara		7			7
Give	1	20	1	16	38
Hadar	2	2	1	8	13
Hartford	1	1	2	1	5
Havana			1		1
Heidelberg	8	8	5	46	67
Hvittingfoss	1	4			5
Infantis	4	15	6	97	122
Javiana	72	32	13	135	252
Kentucky				1	1
Kiambu	2		12	1	15
Kingabwa			1		1
Litchfield	3	3	20	2	28
Lomalinda			1		1
Luciana			1		1

TABLE 5

Laboratory-confirmed *Salmonella* isolates from human sources reported to CDC by serotype, geographic region, and state, 2009

Region=West South Central

Serotype	States				Total
	Arkansas	Louisiana	Oklahoma	Texas	
Madelia				1	1
Manhattan		1			1
Mbandaka		3	13	7	23
Mississippi	11	71	2	68	152
Montevideo	6	78	12	53	149
Muenchen	5	30	18	20	73
Muenster			1		1
Newport	117	118	131	270	636
Norwich	6	2	13		21
Ohio		1			1
Oranienburg	6	43	15	66	130
Panama	1			1	2
Paratyphi A				2	2
Paratyphi B			1		1
Paratyphi B var. L(+) tartrate+	1	1	56	36	94
Pomona				1	1
Poona		1	1	18	20
Rubislaw	2	10	5	2	19
Saintpaul	5	5	14	51	75
Sandiego	1	1		2	4
Saphra		1			1
Schwarzengrund	3				3
Senftenberg	1		4	7	12
Stanley				4	4
Tallahassee		1			1
Teitelkebir			1		1
Tennessee		2	1		3
Thompson	1	2	13	20	36
Typhi			2	3	5
Typhimurium	77	46	161	21	305
Typhimurium var. 5-				240	240
Uganda			6		6
Virchow			2		2
Worthington	1		1		2
I 3,10:l,v:-		1			1
I 4,[5],12:b:-	1				1
I 4,[5],12:b:- var. L(+) tartrate+	2				2
I 4,[5],12:i:-	25	5			30
I 6,7:-:1,5	1	2			3
I 6,7:-:e,n,z15		1			1

TABLE 5

Laboratory-confirmed *Salmonella* isolates from human sources reported to CDC by serotype, geographic region, and state, 2009

Region=West South Central

Serotype	States				Total
	Arkansas	Louisiana	Oklahoma	Texas	
I 6,7:e,h:-	1	1			2
I 6,7:k:-		2			2
I 6,7:l,w:-		1			1
I 6,8:-:e,n,z15		1			1
I 6,8:e,h:-		1			1
I 9,12:-:1,5	2				2
I 9,12:l,z28:-	8	3			11
I 13,22:z:-	1				1
I 13,23:-:1,5	1				1
I 16:e,h:-	1				1
I 47:z4,z23:-	1				1
IIIa 13,23:z4,z24:-				4	4
Partially serotyped	4		28	307	339
Rough, mucoid, and/or nonmotile isolates	1	2			3
Unknown	5	7		2581	2593
Total	465	604	683	4351	6103

TABLE 5

Laboratory-confirmed *Salmonella* isolates from human sources reported to CDC by serotype, geographic region, and state, 2009

Region=Mountain

Serotype	States								Total
	Arizona	Colorado	Idaho	Montana	Nevada	New Mexico	Utah	Wyoming	
Abaetetuba					1				1
Adelaide		1							1
Agbeni					2				2
Ago		1					2		3
Agona	20	6	13			1	4		44
Agoueve					2				2
Alachua	2								2
Albany	4								4
Altona	3					1			4
Anatum	34	6			2	3	5		50
Anatum var. 15+	1								1
Bardo	1								1
Bareilly	4	1	1		1			1	8
Bere							1		1
Berta	3		1		1				5
Blockley	5	1							6
Bovismorbificans	1					1			2
Braenderup	18	7	2		9	6	7		49
Brandenburg	1		1		1	6	1		10
Bredeney	3		1		1				5
Carrau		2	1		1	2	1		7
Cerro	1						1		2
Chandans	1								1
Chester	2				1		2		5
Choleraesuis var. Decatur			1						1
Cleveland			1						1
Concord	1	3							4
Cotham		4	2						6
Cubana	1								1
Derby	1		2		2	3			8
Dublin	5	5	3		2			1	16
Durban	1								1
Ealing							1		1
Eastbourne	1								1
Enteritidis	109	85	26		35	26	66	5	352
Fluntern			1						1
Gaminara	4		1				4		9
Give	4		1			3	3		11
Glostrup						2			2

TABLE 5

Laboratory-confirmed *Salmonella* isolates from human sources reported to CDC by serotype, geographic region, and state, 2009

Region=Mountain

Serotype	States								Total
	Arizona	Colorado	Idaho	Montana	Nevada	New Mexico	Utah	Wyoming	
Grumpensis					1				1
Haardt			1						1
Hadar	3	6	2		4		3		18
Haifa	2								2
Hartford		1							1
Havana	5	1					2		8
Heidelberg	63	8	9		14	6	25		125
Hvittingfoss	1								1
Infantis	28	10	9			2	7		56
Inverness							1		1
Istanbul			1						1
Javiana	48	9			2	43	7	1	110
Johannesburg	1						1		2
Kentucky	2	3							5
Kiambu	2	4							6
Lansing		2							2
Litchfield	7	5	1		2	3	1		19
Lomalinda						2	3		5
Lome			1						1
London	1	1							2
Mbandaka	6	8	1		1	10	1		27
Meleagridis	1								1
Miami	2	2							4
Michigan	2					1			3
Minnesota	4						1		5
Mississippi		3					5		8
Monschau	5	1					1		7
Montevideo	48	28	3	1	3	18	18	1	120
Muenchen	41	4	2		1	10	2		60
Muenster	2		3				1		6
Newmexico	2	1				1			4
Newport	103	97	9	1	7	31	41	2	291
Oakland			1						1
Offa							1		1
Ohio	1								1
Oranienburg	98	15	4		9	12	22		160
Oslo							1		1
Panama	30	3	1		3	1	2		40
Paratyphi A	2	6				1			9

TABLE 5

Laboratory-confirmed *Salmonella* isolates from human sources reported to CDC by serotype, geographic region, and state, 2009

Region=Mountain

Serotype	States								Total
	Arizona	Colorado	Idaho	Montana	Nevada	New Mexico	Utah	Wyoming	
Paratyphi B	1	2			3				6
Paratyphi B var. L(+) tartrate+	5	16	5		6		8		40
Poano	1						1		2
Pomona	3	1			1	3	4		12
Poona	58	5			1	8	6		78
Potsdam		1							1
Reading	3								3
Rissen		1	1		13				15
Romanby		1							1
Rubislaw	3						2		5
Saintpaul	11	14	3		5	19	11		63
Sandiego	20	5							25
Saphra						1			1
Schwarzengrund	6				3		1		10
Senftenberg	7	2	1		3	1	4		18
Shubra					2		1		3
Singapore	1					1			2
Soerenga	2								2
Stanley	7	4	2			3	6		22
Stanleyville							1		1
Suelldorf	1		1						2
Sundsvall	1								1
Takoradi		1							1
Teitelkebir	4								4
Tennessee	4	1	1		1	1			8
Thompson	8	4			1	1	4		18
Travis	1								1
Tucson	1								1
Typhi	3	6	3		4		1		17
Typhimurium	119	121	48	2	24	33	83	4	434
Typhimurium var. 5-	29	24	8		1	11	5		78
Uganda	2				1				3
Urbana	3	2			1				6
Virchow	1		1			3			5
Waycross							2		2
Weltevreden		1					1		2
Worthington	2				1				3
I 4,[5],12:b:-	16	2			3				21
I 4,[5],12:b:- var. L(+) tartrate+	4	3							7

TABLE 5

Laboratory-confirmed *Salmonella* isolates from human sources reported to CDC by serotype, geographic region, and state, 2009

Region=Mountain

Serotype	States								Total
	Arizona	Colorado	Idaho	Montana	Nevada	New Mexico	Utah	Wyoming	
I 4,[5],12:e,h:-	1								1
I 4,[5],12:i:-	19	24	5		7		2		57
I 4,[5],12:r:-		1							1
I 6,7:k:-		2			1				3
I 9,12:l,z28:-	3								3
I 45:b:-	1								1
I 47:z4,z23:-	1								1
II 21:z10:[z6]	2								2
II 47:b:e,n,x,z15	2								2
II 48:a:z39	1								1
II 48:d:z6					2				2
IIIa 18:z4,z23:-	1						1		2
IIIa 35:z4,z23:-	1								1
IIIa 40:z4,z24:-	1								1
IIIa 41:z4,z23,z32:-			1						1
IIIa 41:z4,z23:-	1		1						2
IIIa 41:z4,z32:-					2				2
IIIa 43:z4,z23:-	2								2
IIIa 44:z4,z32:-							1		1
IIIa 48:g,z51:-	2								2
IIIa 48:z36:-	1								1
IIIa 48:z4,z24:-		1							1
IIIa 50:z29:-	1								1
IIIb 35:k:e,n,x,z15		1							1
IIIb 47:k:-		1							1
IIIb 48:i:z							1		1
IIIb 50:r:z	1								1
IIIb 53:z10:z35		1							1
IIIb 61:l,[v],[z13]:1,5,[7]		1							1
IIIb 65:(k):z		1							1
IV 11:z4,z23:-			1						1
IV 16:z4,z32:-		1					2		3
IV 43:z4,z32:-							1		1
IV 44:z4,z23:-	2								2
IV 44:z4,z32:-	1								1
IV 45:g,z51:-				1					1
IV 48:g,z51:-	1		1				1		3
IV 50:g,z51:-	1								1
IV 50:z4,z23:-							1		1

TABLE 5

Laboratory-confirmed *Salmonella* isolates from human sources reported to CDC by serotype, geographic region, and state, 2009

Region=Mountain

Serotype	States								Total
	Arizona	Colorado	Idaho	Montana	Nevada	New Mexico	Utah	Wyoming	
Partially serotyped	14	2		114		23		26	179
Rough, mucoid, and/or nonmotile isolates	10	5			3		2		20
Unknown	1		3	1	1		1	33	40
Total	1139	598	192	120	198	303	398	74	3022

TABLE 5

Laboratory-confirmed *Salmonella* isolates from human sources reported to CDC by serotype, geographic region, and state, 2009

Region=Pacific

Serotype	States					Total
	Alaska	California	Hawaii	Oregon	Washington	
Adelaide		25			1	26
Agbeni		2				2
Ago		3				3
Agona	1	97	2	5	6	111
Alachua		2				2
Albany		7	1	2		10
Allandale		1				1
Amager		3	1			4
Amoutive				1	1	2
Anatum		36	2	5	6	49
Anatum var. 15+		1				1
Apapa		3		1		4
Arechavaleta		1				1
Baildon	1	1				2
Bardo		11			1	12
Bareilly		21	2	2	2	27
Barranquilla		1				1
Beaudesert					2	2
Berta		16				16
Birkenhead			4			4
Blegdam		1				1
Blockley		18		2		20
Bovismorbificans		21		2		23
Bradford					1	1
Braenderup	1	161	1	21	11	195
Brandenburg		29	2		4	35
Bredeney		3		3		6
Butantan var. 15+		1				1
Cannstatt		7				7
Carrau		12	1	1	3	17
Cerro		7				7
Cerro var. 14+		2				2
Chailey		2				2
Charity					1	1
Chester		9			1	10
Choleraesuis		1				1
Choleraesuis var. Kunzendorf		1				1
Colindale		4				4
Concord	1	6		5	1	13
Corvallis		6			1	7

TABLE 5

Laboratory-confirmed *Salmonella* isolates from human sources reported to CDC by serotype, geographic region, and state, 2009

Region=Pacific

Serotype	States					Total
	Alaska	California	Hawaii	Oregon	Washington	
Cotham		3			2	5
Cubana		5				5
Daytona					1	1
Denver					1	1
Derby		22	8		3	33
Dublin		23		4	5	32
Duisburg		3				3
Durban		2	6			8
Durham		1		1		2
Ealing		9		1		10
Eastbourne		2			1	3
Edinburg		1				1
Enteritidis	11	851	64	59	126	1111
Fischerstrasse		2				2
Florida		1				1
Fluntern		4				4
Frankfurt			1			1
Freefalls				1		1
Fresno		2		1		3
Galiema					1	1
Gaminara		4				4
Gatuni		1				1
Give		9	2	1		12
Goettingen				1		1
Gouloumbo		1				1
Hadar	2	43	13	7	13	78
Haifa	1	1				2
Hartford	1	8				9
Havana		9			2	11
Heidelberg	7	521	17	44	64	653
Hvittingfoss		14			2	16
Ilala		1				1
Infantis		117	6	9	16	148
Irumu		3				3
Istanbul		3				3
Itami		1				1
Javiana		98	1	1	8	108
Johannesburg		14			2	16
Kedougou		1				1
Kentucky		11			3	14

TABLE 5

Laboratory-confirmed *Salmonella* isolates from human sources reported to CDC by serotype, geographic region, and state, 2009

Region=Pacific

Serotype	States					Total
	Alaska	California	Hawaii	Oregon	Washington	
Kiambu		5				5
Kingabwa				1		1
Kintambo		1			2	3
Kisarawe					1	1
Kokomlele		2				2
Kottbus		3				3
Krefeld		2				2
Lattenkamp		1				1
Litchfield		37	2	1	4	44
Liverpool		1			1	2
Lomalinda		10				10
Lomita		1				1
London		5				5
Luciana		1				1
Madelia		1				1
Manhattan		29	3			32
Maumee		1				1
Mbandaka	3	46		3	5	57
Meleagridis		4				4
Mgulani		1				1
Miami		5		2		7
Michigan		3				3
Minnesota	2	4				6
Mississippi		8	1	1	1	11
Molade		1				1
Monschau				1		1
Montevideo	3	199	4	21	40	267
Mpouto					1	1
Muenchen		89	43	10	9	151
Muenster		15		1		16
Newport	7	339	7	16	31	400
Nima		2				2
Norwich	1	1				2
Ohio		7		1	1	9
Ohio var. 14+		2				2
Onireke		1				1
Oranienburg		116	4	6	16	142
Oslo		16			2	18
Panama		20	2	1	5	28
Paratyphi A		32		1	5	38

TABLE 5

Laboratory-confirmed *Salmonella* isolates from human sources reported to CDC by serotype, geographic region, and state, 2009

Region=Pacific

Serotype	States					Total
	Alaska	California	Hawaii	Oregon	Washington	
Paratyphi B var. L(+) tartrate+	1	53	6	3	19	82
Pomona		20		1	2	23
Poona		39		2	2	43
Potsdam		15			3	18
Putten				1	3	4
Reading		6	14		4	24
Richmond		2				2
Rissen		90	1	9	4	104
Roodepoort		2				2
Rubislaw		2				2
Saintpaul		90	5	9	17	121
Sandiego		23		4		27
Schwarzengrund		25	2	1		28
Senftenberg	1	57	1	3	6	68
Soerenga		2		1		3
Stanley		43	2	4	9	58
Stanleyville		1				1
Takoradi		1	3			4
Tallahassee		1				1
Teitelkebir		9			3	12
Tennessee	1	6		2	1	10
Thompson	1	66	2	12	14	95
Tucson		2				2
Typhi		92	7	1	16	116
Typhimurium	12	660	62	82	133	949
Typhimurium var. 5-		137				137
Uganda		11			1	12
Urbana		6	1		1	8
Virchow	1	15		1	4	21
Virginia			3			3
Wagenia		1				1
Wandsworth		1				1
Waycross		1				1
Weltevreden		19	22	2	1	44
Weltevreden var. 15+			2			2
Widemarsh		4				4
Wien		2				2
Worthington		6		1		7
I 4,[5],12:-:1,2		1		1		2
I 4,[5],12:b:-				1	1	2

TABLE 5

Laboratory-confirmed *Salmonella* isolates from human sources reported to CDC by serotype, geographic region, and state, 2009

Region=Pacific

Serotype	States					Total
	Alaska	California	Hawaii	Oregon	Washington	
I 4,[5],12:b:- var. L(+) tartrate+		23		1		24
I 4,[5],12:d:-		1				1
I 4,[5],12:i:-		162	8	13	21	204
I 4,[5],12:r:-		1				1
I 6,7:-:1,5				1		1
I 6,7:c:-				1		1
I 6,7:k:-		4				4
I 6,8:d:-		2				2
I 6,8:e,h:-		2		1		3
I 9,12:-:1,5		3				3
I 9,12:l,z28:-		6				6
I 13,23:b:-		1				1
I 45:b:-		1				1
I 47:b:-		1				1
II 21:z10:[z6]		2				2
II 30:l,z28:z6				1		1
II 47:b:1,5		1				1
II 50:b:z6	1					1
IIIa 18:z4,z23:-		27		1	3	31
IIIa 21:z4,z23:-		1				1
IIIa 40:g,z51:-		1				1
IIIa 40:z4,z23:-		1				1
IIIa 41:z4,z23,z32:-		1				1
IIIa 41:z4,z23:-		3				3
IIIa 41:z4,z24:-		1				1
IIIa 48:g,z51:-		6				6
IIIa 48:z4,z24:-		1				1
IIIa 53:z4,z23,z32:-		1				1
IIIa 53:z4,z23:-		3				3
IIIa 56:z4,z23:-		1				1
IIIb 35:r:e,n,x,z15		1				1
IIIb 47:r:z53		1				1
IIIb 48:i:z		1				1
IIIb 50:k:z		2		1	2	5
IIIb 50:r:z		1				1
IIIb 53:z10:z35		1				1
IIIb 60:r:e,n,x,z15		4				4
IIIb 60:z52:z53		1				1
IIIb 61:-:1,5,[7]		1				1
IIIb 61:c:1,5,(7)		1				1

TABLE 5

Laboratory-confirmed *Salmonella* isolates from human sources reported to CDC by serotype, geographic region, and state, 2009

Region=Pacific

Serotype	States					Total
	Alaska	California	Hawaii	Oregon	Washington	
IIIb 61:c:z35				1		1
IIIb 61:i:z53		1				1
IIIb 61:k:1,5,[7]		1				1
IIIb 61:l,[v],[z13]:1,5,[7]		7				7
IV 43:z4,z23:-		2				2
IV 44:z4,z23:-		1		1		2
IV 45:g,z51:-		4			1	5
IV 48:g,z51:-		3			2	5
IV 48:z4,z32:-		1				1
IV 50:g,z51:-		3				3
IV 50:z4,z23:-		14			1	15
Partially serotyped			4		8	12
Rough, mucoid, and/or nonmotile isolates		28	1	5		34
Unknown	2	87		2	3	94
Total	62	5258	346	416	701	6783

FIGURE 2

Isolation rates of laboratory-confirmed *Salmonella* serotype Enteritidis from human sources reported to CDC per 100,000 population by region: 1970 - 2009

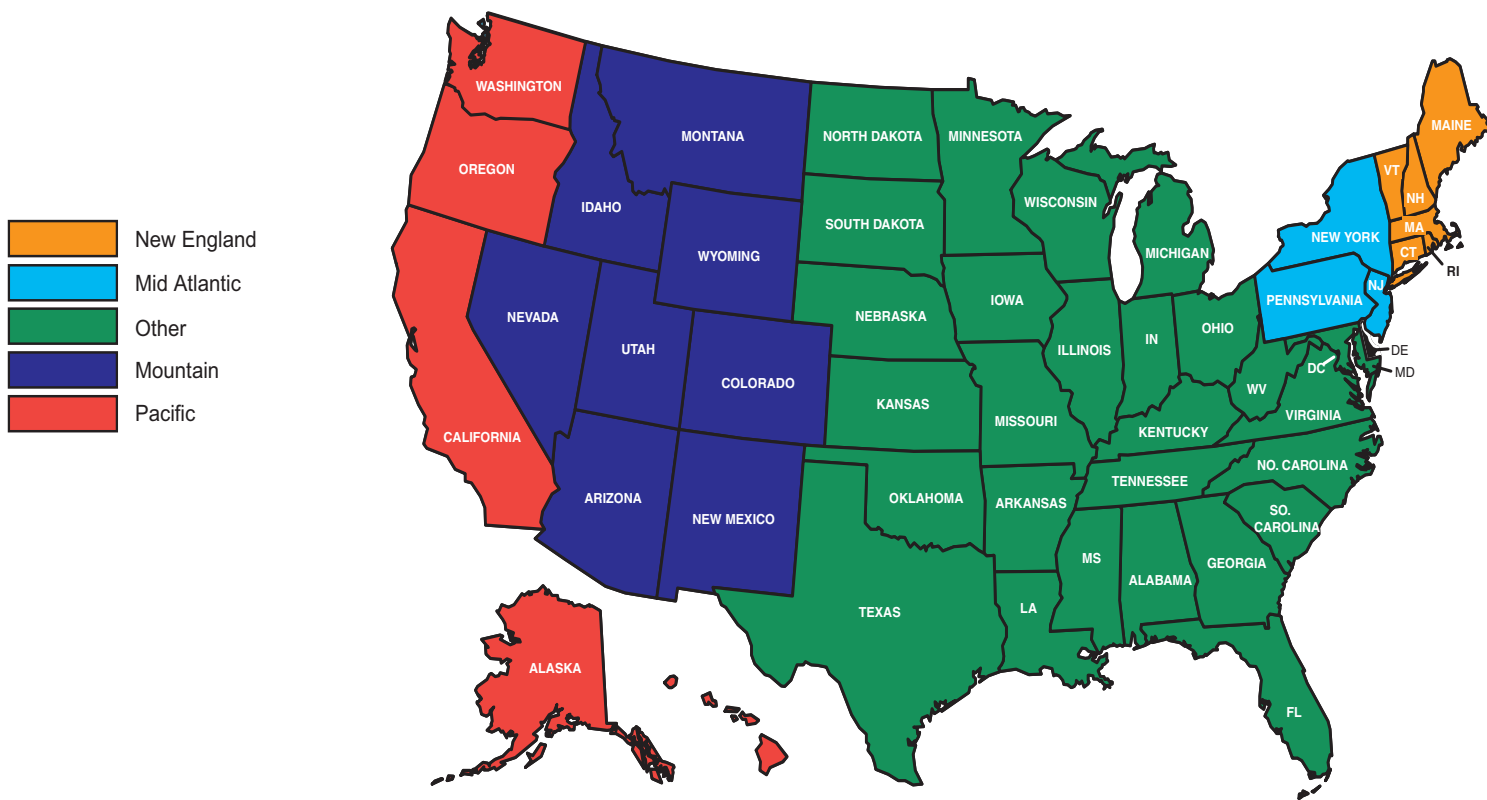
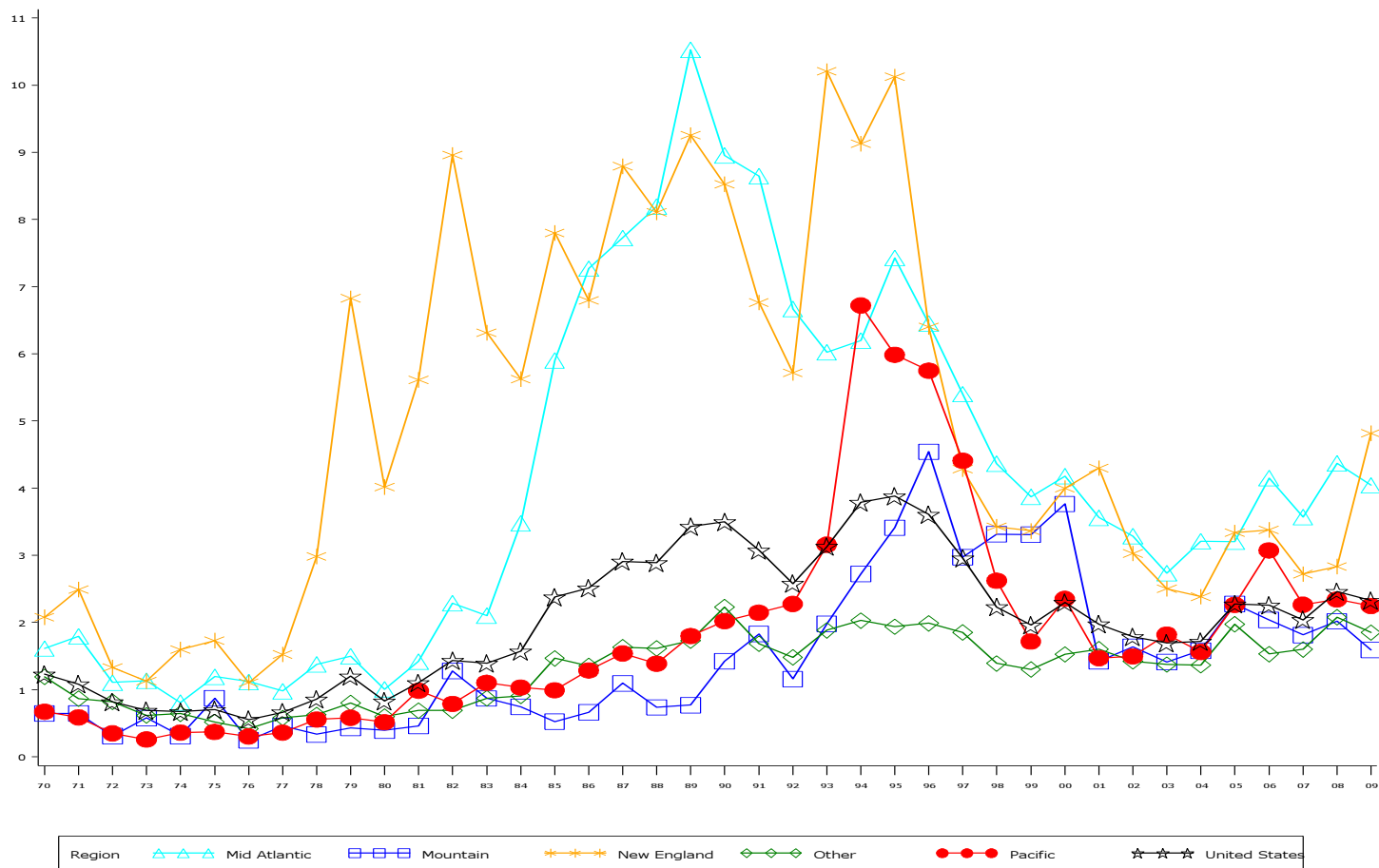


FIGURE 3

Isolation rates of the top 4 laboratory-confirmed *Salmonella* serotypes from human sources reported to CDC per 100,000 population: 1970 - 2009

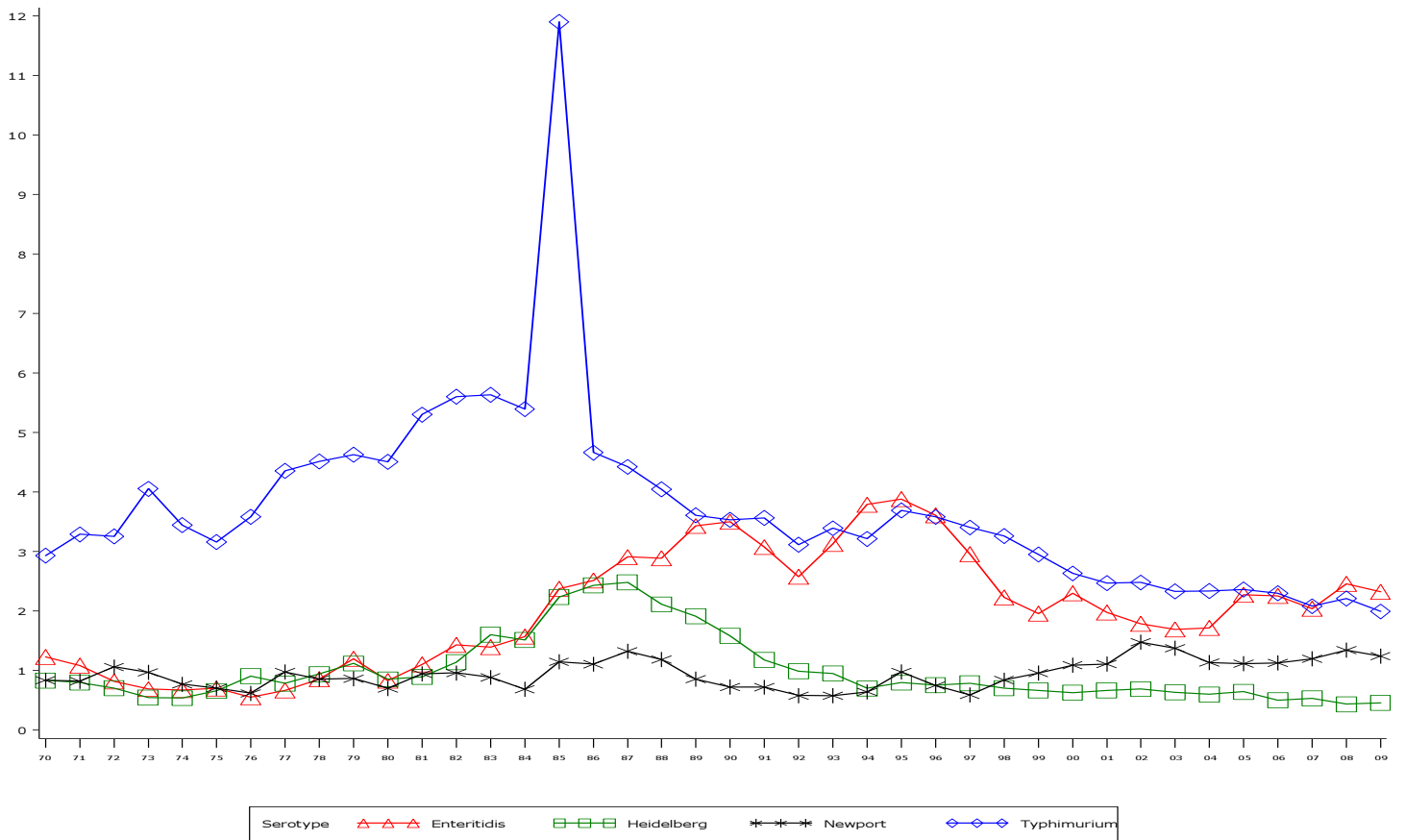


TABLE 6

Laboratory-confirmed *Salmonella* isolates from clinical and non-clinical nonhuman sources reported to the National Veterinary Services Laboratories, with the 20 most frequently reported serotypes listed individually, 2009

Clinical Nonhuman 2009				Non-Clinical Nonhuman 2009			
Rank	Serotype	Reported	Percent	Rank	Serotype	Reported	Percent
1	Typhimurium *	1132	22.0	1	Kentucky	1214	15.4
2	Newport	349	6.8	2	Enteritidis	1151	14.6
3	Dublin	290	5.6	3	Heidelberg	875	11.1
4	Cerro	246	4.8	4	Typhimurium *	430	5.5
5	Derby	208	4.1	5	Senftenberg	397	5.0
6	Anatum	159	3.1	6	Montevideo	256	3.3
7	Agona	158	3.1	7	Hadar	217	2.8
8	Heidelberg	151	2.9	8	Mbandaka	191	2.4
9	Montevideo	148	2.9	9	Agona	148	1.9
10	Javiana	144	2.8	10	Worthington	145	1.8
11	Senftenberg	119	2.3	11	Schwarzengrund	139	1.8
12	I 4,[5],12:i:-	114	2.2	12	Anatum	133	1.7
13	Mbandaka	108	2.1	13	I 4,[5],12:i:-	129	1.6
14	Infantis	106	2.1	14	Newport	120	1.5
15	Kentucky	101	2.0	15	Cerro	91	1.2
16	Enteritidis	96	1.9	16	Muenster	91	1.2
17	Muenchen	75	1.5	17	Berta	89	1.1
18	Muenster	72	1.4	18	Infantis	87	1.1
19	Braenderup	66	1.3	19	Derby	85	1.1
20	Meleagridis	50	1.0	20	Dublin	77	1.0
	Sub Total	3892	75.8		Sub Total	6065	77.1
	All other serotyped	1067	20.8		All other serotyped	1579	20.1
	Unknown	11	0.2		Unknown	25	0.3
	Rough, mucoid, and/or nonmotile isolates	165	3.2		Rough, mucoid, and/or nonmotile isolates	202	2.6
	Sub Total	1243	24.2		Sub Total	1806	23.0
	Total	5135	100		Total	7871	100
Note: ----- * Typhimurium includes var. 5- (formerly var. Copenhagen) ** Choleraesuis includes var. Decatur and Kunzendorf				Note: ----- * Typhimurium includes var. 5- (formerly var. Copenhagen)			

TABLE 7

Laboratory-confirmed *Salmonella* isolates from clinical nonhuman sources reported to the National Veterinary Services Laboratories by serotype and source, 2009

Serotype	All Others	Bovine	Chicken	Equine	Other birds / Wild animals	Other Domestic Animals /Environment	Porcine	Reptile	Turkey	Total
Adelaide	2				1		4	4		11
Ago								1		1
Agona		42	1	14	5	1	90		5	158
Ahuza				1						1
Alachua							2		2	4
Albany				1	2				3	6
Albert									6	6
Altona	2	4		1			1			8
Amager		1								1
Anatum	3	31		55	11	4	48		7	159
Anatum var. 15+		12		20	1					33
Anatum var. 15+,34+		1		1	2				1	5
Apapa								6		6
Aqua								1		1
Bangkok								1		1
Bareilly		2		3	1	2				8
Barranquilla		5		3						8
Berta				5	1	1	2		1	10
Bietri		1								1
Blockley	1									1
Bovismorbificans		1		14			1			16
Braenderup	4	8		47	3		4			66
Brandenburg		9		1			23		1	34
Bredeney		2			4		5		11	22
Cannstatt				1						1
Carrau	1									1
Cerro	3	226	1	3	9		4			246
Cholerasuis var. Kunzendorf					1		38			39
Cubana					2		1			3
Daytona				1						1
Derby	2	8		1		1	196			208
Dublin	1	278		1		8	2			290
Eastbourne								1		1
Enteritidis	6	3	49	3	19	8	5	3		96
Florida								1		1
Fresno								14		14
Gaminara				3						3

TABLE 7

Laboratory-confirmed *Salmonella* isolates from clinical nonhuman sources reported to the National Veterinary Services Laboratories by serotype and source, 2009

Serotype	All Others	Bovine	Chicken	Equine	Other birds / Wild animals	Other Domestic Animals /Environment	Porcine	Reptile	Turkey	Total
Georgia						2				2
Give		15		3	4		7			29
Give var. 15+		4								4
Give var. 15+,34+		1								1
Hadar	1	1		1	3	7	2		14	29
Hartford	2	3	1	13	1	4				24
Havana	1	4		2			3			10
Heidelberg	3	25	20	2	5	1	80		15	151
Hvittingfoss	1									1
Idikan					3					3
Infantis		19	1	16	2	3	65			106
Jamaica				1						1
Javiana	1			138		5				144
Johannesburg		1		1		3	34		2	41
Kentucky	9	62	15	3	10	1	1			101
Kiambu	1	4		3	2	3	2			15
Krefeld							4			4
Kuessel							1			1
Lexington	2	1					1	1		5
Litchfield	1	3	1	8	1	1	5			20
Liverpool	1	1					2			4
Livingstone	2				1	3	6			12
London		1					14			15
Manhattan						1	5			6
Mbandaka	10	39	2	16		7	34			108
Meleagridis	1	42		1	1		5			50
Meleagridis var. 15+		1								1
Miami	1			5		1		2		9
Midway								1		1
Minnesota						1	1		1	3
Mississippi				1						1
Molade				2						2
Montevideo	7	95		11	5	2	12	1	15	148
Muenchen	11	17	1	17	8	4	17			75
Muenster	5	57	1	6		1	1		1	72
Muenster var. 15+		1								1
Newport	14	140	3	99	29	40	19	5		349

TABLE 7

Laboratory-confirmed *Salmonella* isolates from clinical nonhuman sources reported to the National Veterinary Services Laboratories by serotype and source, 2009

Serotype	All Others	Bovine	Chicken	Equine	Other birds / Wild animals	Other Domestic Animals /Environment	Porcine	Reptile	Turkey	Total
Nonviable	1	2		3	1		4			11
Ohio	1	5	2	2	1	7	27			45
Oranienburg	1	7	1	9	1	2	2	1		24
Orientalis								1		1
Orion		2	1		1				2	6
Orion var. 15+		1								1
Orion var. 15+,34+		2			1					3
Oslo								2		2
Othmarschen		1								1
Ouakam					1				16	17
Panama		1			2			1		4
Paratyphi B var. L(+) tartrate+	2	4		13		2	1	1		23
Pensacola	2									2
Pomona		1			1					2
Poona		2			6					8
Powell								1		1
Putten	1					1	4			6
Reading		21			5		2		1	29
Rissen						1	12			13
Roodepoort						1				1
Rubislaw				13	2	1				16
Saintpaul	2	6		5	3	1	5		2	24
Schwarzengrund		3		4	2	1	20		2	32
Senftenberg	3	6	13	3	11	1	36		46	119
Soerenga		1				1				2
Tallahassee				2						2
Tennessee		2	1	1	2		2		5	13
Thompson	2	2	2	16	3	2				27
Typhimurium	7	94	9	152	107	9	144		5	527
Typhimurium var. 5-	34	63	3	12	61	10	413		9	605
Uganda	1	20		8		1	10			40
Uganda var. 15+		5								5
Uganda var. 15+,34+		1								1
Waycross								1		1
Weltevreden								4		4
Woodinville	1									1
Worthington			4	1	3		32			40

TABLE 7

Laboratory-confirmed *Salmonella* isolates from clinical nonhuman sources reported to the National Veterinary Services Laboratories by serotype and source, 2009

Serotype	All Others	Bovine	Chicken	Equine	Other birds / Wild animals	Other Domestic Animals /Environment	Porcine	Reptile	Turkey	Total
I 11:k:-								1		1
I 11:r:-				1						1
I 13,23:b:-				1		1				2
I 21:f,g:-								1		1
I 3,10:-:1,5							1			1
I 3,10:-:1,7				1						1
I 3,10:e,h:-		2								2
I 3,15:e,h:-				1						1
I 3,19:-:l,w							1			1
I 4,12:l,v:-				1					1	2
I 4,12:l,z13:1,7		1								1
I 4,[5],12:-:1,2	1				5	1	2	1		10
I 4,[5],12:-:1,7				1			1		2	4
I 4,[5],12:d:-									3	3
I 4,[5],12:i:-	2	34	2	32	30	5	9			114
I 4,[5],12:r:-							1		4	5
I 40:g,z51:-								1		1
I 6,14,18:y:1,5					1					1
I 6,7:-:1,5		1		2						3
I 6,7:-:e,n,z15				1						1
I 6,7:k:-									1	1
I 6,7:z10:-		1	1							2
I 6,8:-:1,2				1						1
I 6,8:z10:-					1					1
I 8,20:-:z6			1							1
I 8,20:i:-		2					1			3
I 9,12:-:1,5				1						1
II 13,22:z29:1,5								1		1
II 30:l,z28:z6								1		1
II 55:k:z39								2		2
II 58:l,z13,z28:z6								1		1
IIIa 18:z4,z23:-					1					1
IIIa 21:g,z51:-								1		1
IIIa 35:z4,z23:-					1	1				2
IIIa 41:z4,z23:-						1		1		2
IIIa 44:z4,z23:-						1				1
IIIa 48:g,z51:-						1				1

TABLE 7

Laboratory-confirmed *Salmonella* isolates from clinical nonhuman sources reported to the National Veterinary Services Laboratories by serotype and source, 2009

Serotype	All Others	Bovine	Chicken	Equine	Other birds / Wild animals	Other Domestic Animals /Environment	Porcine	Reptile	Turkey	Total
IIIa 48:z4,z23:-								1		1
IIIa 48:z4,z24:-						1				1
IIIa 53:k:e,n,x,z15	1									1
IIIa 53:z4,z23:-								1		1
IIIa 53:z4,z24:-								1		1
IIIb (6),14:z10:z								1		1
IIIb 16:z10:e,n,x,z15					3			1		4
IIIb 17:z10:z35					2					2
IIIb 18:l,v:-								1		1
IIIb 18:l,v:z					4			1		5
IIIb 35:i:z								1		1
IIIb 35:l,v:z35	2									2
IIIb 38:l,v								1		1
IIIb 38:l,v:Z35								1		1
IIIb 47:r:z53								1		1
IIIb 47:z52:z35								1		1
IIIb 48:i:z								4		4
IIIb 48:l,v:1,5,[7]								1		1
IIIb 50:i:e,n,x,z15								1		1
IIIb 50:k:z					2					2
IIIb 50:r:-					1					1
IIIb 50:z:z52			1							1
IIIb 52:-z35								1		1
IIIb 52:z52:z	1									1
IIIb 52:z:z52								1		1
IIIb 53:z10:z								3		3
IIIb 53:z10:z35	2							1		3
IIIb 6,14:z10:z					2					2
IIIb 61:-:1,5,7	2	1				24				27
IV 43:z4,z23:-								12		12
IV 43:z4,z32:-	1							1		2
IV 44:z4,z23:-	2		2		1					5
IV 44:z4,z24:-								2		2
IV 45:g,51:-			1							1
IV 45:g,z51:-	2				1					3
IV 48:z29:-								2		2
IV 6,7:g,z51:-								1		1

TABLE 7

Laboratory-confirmed *Salmonella* isolates from clinical nonhuman sources reported to the National Veterinary Services Laboratories by serotype and source, 2009

Serotype	All Others	Bovine	Chicken	Equine	Other birds / Wild animals	Other Domestic Animals / Environment	Porcine	Reptile	Turkey	Total
Rough, mucoid, and/or nonmotile isolates	4	29	5	23	14	2	75	11	2	165
Unknown	2	4	2				3			11

Note:

 Data from United States Department of Agriculture (USDA), Animal and Plant Health Inspection Service (APHIS), and National Veterinary Services Laboratory (NVSL).

TABLE 8

Laboratory-confirmed *Salmonella* isolates from non-clinical nonhuman sources reported to the National Veterinary Services Laboratories by serotype and source, 2009

Serotype	All Others	Bovine	Chicken	Equine	Other birds / Wild animals	Other Domestic Animals /Environment	Porcine	Reptile	Turkey	Total
Abaetetuba			1							1
Aberdeen		1								1
Adelaide	3		1				4		1	9
Agona	30	6	39		5	1	32		35	148
Alabama			1							1
Alachua	14		8						1	23
Albany	4	1	3						28	36
Albert			3							3
Altona	1						1		1	3
Amager	1		8							9
Amsterdam	1									1
Amsterdam var. 15+,34+			2							2
Anatum	21	3	60	1	3		24		21	133
Anatum var. 15+	4		10				1		1	16
Banana			2							2
Bareilly	2	2	35							39
Barranquilla	1		7							8
Bergen	1									1
Berta	7		59	1			11		11	89
Blockley			2							2
Blukwa	1									1
Bovismorbificans			4							4
Braenderup	9		53	1			8			71
Brandenburg	7		5				2		1	15
Brazil			2							2
Bredeney	4						4		7	15
Carrau			1							1
Cerro	38	25	25				2		1	91
Chailey	1									1
Cholerasuis var. Kunzendorf	3						4			7
Cubana	6		19						4	29
Derby	28		5		2		48		2	85
Dublin	32	42	2				1			77
Ealing	3		2							5
Enteritidis	183	2	944	1	19				2	1151
Farmingdale								1		1
Fresno	4							2		6

TABLE 8

Laboratory-confirmed *Salmonella* isolates from non-clinical nonhuman sources reported to the National Veterinary Services Laboratories by serotype and source, 2009

Serotype	All Others	Bovine	Chicken	Equine	Other birds / Wild animals	Other Domestic Animals /Environment	Porcine	Reptile	Turkey	Total
Gaminara	6		3							9
Gera			1							1
Give	26	1	10	1	3		3		1	45
Give var. 15+			1							1
Give var. 15+,34+			5							5
Glostrup	1									1
Godesberg	1		2							3
Hadar	43		40		1		1		132	217
Hartford	8		9							17
Havana	5	1	13							19
Heidelberg	212	4	633		8		7		11	875
Holcomb			1							1
Idikan			1							1
Infantis	17	3	33	3		1	27		3	87
Inverness			1				5			6
Istanbul			1							1
Javiana	27		10	39						76
Johannesburg	12		32				21		6	71
Kentucky	167	81	930		23		1		12	1214
Kiambu	1		39				1			41
Kralingen			1							1
Krefeld							1			1
Kumasi	1									1
Lexington			2							2
Lexington var. 15+			1							1
Lexington var. 15+,34+	1		2							3
Lille			10							10
Litchfield	3		4		4					11
Liverpool	3		24						2	29
Livingstone	4		14			1	2			21
London		1					4		45	50
London var. 15+	1									1
Manhattan							1			1
Mbandaka	25	7	145	1					13	191
Meleagridis	13	8	16				1			38
Memphis			1							1
Minnesota	4		4							8

TABLE 8

Laboratory-confirmed *Salmonella* isolates from non-clinical nonhuman sources reported to the National Veterinary Services Laboratories by serotype and source, 2009

Serotype	All Others	Bovine	Chicken	Equine	Other birds / Wild animals	Other Domestic Animals /Environment	Porcine	Reptile	Turkey	Total
Molade			3							3
Montevideo	50	57	119	1	2	1	5		21	256
Muenchen	22	13	23	1	1		3		7	70
Muenster	9	6	11	3	1				61	91
Muenster var. 15+			1							1
Muenster var. 15+,34+	1				1					2
Newport	42	13	33	7	9		1		15	120
Nonviable	4		8						1	13
Norwich			15							15
Nottingham	2									2
Ohio	6		22			1	3		2	34
Oranienburg	13		24						3	40
Orion	2		17						21	40
Orion var. 15+			6						1	7
Orion var. 15+,34+	2		9				1		2	14
Oslo	2	1								3
Ouakam	3		17						3	23
Paratyphi A	2									2
Paratyphi B var. L(+) tartrate+	5	2								7
Pensacola	2									2
Poano								1		1
Pomona	3		5							8
Poona	1									1
Putten		1	13							14
Reading		1					1			2
Rissen	2		5				5		1	13
Rubislaw	9		23	2						34
Ruiru			6							6
Saintpaul	21	1		1			4		48	75
Sandiego	1									1
Saugas	1									1
Schwarzengrund	15	2	90		1		6		25	139
Senftenberg	37	4	180	1	3		2		170	397
Soerenga	1		1							2
Stanley	2									2
Taksony			8							8
Tennessee	6		44						1	51

TABLE 8

Laboratory-confirmed *Salmonella* isolates from non-clinical nonhuman sources reported to the National Veterinary Services Laboratories by serotype and source, 2009

Serotype	All Others	Bovine	Chicken	Equine	Other birds / Wild animals	Other Domestic Animals /Environment	Porcine	Reptile	Turkey	Total
Thompson	12		48		8					68
Typhimurium	103	14	82	3	15		18		15	250
Typhimurium var. 5-	62	11	45	5	6		36	5	10	180
Uganda	6	2	7	1			5		8	29
Uganda var. 15+	1						1			2
Uganda var. 15+,34+			1							1
Urbana			1					1		2
Widemarsh			8							8
Worthington	9		23				6		107	145
Zanzibar	1									1
I 3,10:-:1,5									1	1
I 3,10:-:1,7	1									1
I 3,10:-:l,w	1	1								2
I 3,10:e,h:-	3								1	4
I 3,10:l,v:-			1							1
I 3,15:e,h:-	1									1
I 3,15:z10:-									1	1
I 4,12:l,v:-	1									1
I 4,[5],12:d:-	2								1	3
I 4,[5],12:e,h:-	1									1
I 4,[5],12:i:-	36	12	70	1	5		2		3	129
I 4,[5],12:r:-	2		2				2		20	26
I 42:z4,z23:-			3						1	4
I 47:z4,z23:-	2									2
I 48:-:1,5,7			1							1
I 48:k:1,5,7					1					1
I 6,7:-:1,5	4		12							16
I 6,7:-:l,w	1						1			2
I 6,7:d:-			1							1
I 6,7:e,h:-		1								1
I 6,7:k:-	2	1	5							8
I 6,7:z10:-			1							1
I 6,8:-:1,2									1	1
I 6,8:-:e,n,z15	10									10
I 6,8:d:-	7		3							10
I 8,20:-:z6	12		19							31
I 8,20:i:-	1									1

TABLE 8

Laboratory-confirmed *Salmonella* isolates from non-clinical nonhuman sources reported to the National Veterinary Services Laboratories by serotype and source, 2009

Serotype	All Others	Bovine	Chicken	Equine	Other birds / Wild animals	Other Domestic Animals /Environment	Porcine	Reptile	Turkey	Total
I 8,20:z10:-			1							1
II 30:k:1,6	1									1
II 47:b:1,5	1									1
II 65:(k):z					1					1
IIIa 18:z4,z23:-	5							1	3	9
IIIa 48:g,z51:-	1		1							2
IIIa 51:z4,z23:-	1							1		2
IIIa 53:z4,z23:-	1									1
IIIa 56:z4,z23:-								1		1
IIIb 16:z10:e,n,x,z15	2						5			7
IIIb 21:z10:e,n,x,z15	1									1
IIIb 47:l,v:z								1		1
IIIb 48:i:z					1					1
IIIb 50:r:z					1					1
IIIb 57:c:e,n,x,z15	1									1
IIIb 61:-:1,5,7	1	1				1				3
IIIb 61:i:z	1									1
IIIb 61:i:z35								1		1
IV 40:z4,z32:-							5			5
IV 43:z4,z23:-	2							1		3
IV 44:z36:-			1							1
IV 44:z4,z32:-	1									1
IV 53:z4.z23:-					1					1
Rough, mucoid, and/or nonmotile isolates	23	3	136		9		9	3	19	202
Unknown	4	1	17		2		1			25
Total	1583	336	4464	74	136	6	339	19	914	7871

Note:

Data from United States Department of Agriculture (USDA), Animal and Plant Health Inspection Service (APHIS), and National Veterinary Services Laboratory (NVSL).