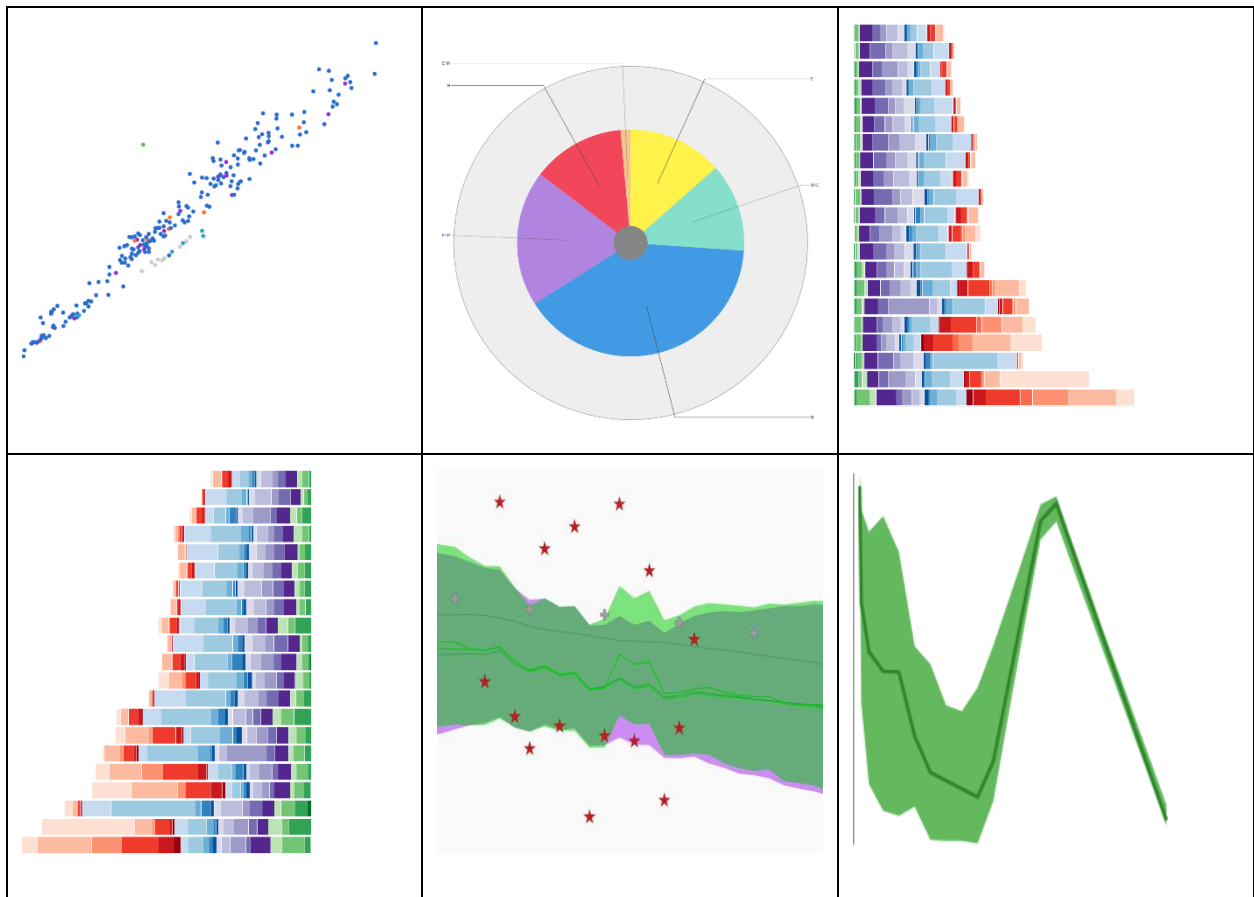




GBD 2016 Online Tools Overview



Preface

This document is a basic guide to the suite of web-based tools for the Global Burden of Disease Study (GBD). These tools allow students, researchers, policymakers, and the public to view and interact with results from GBD. They are all freely available for non-commercial use.

This guide touches on the Global Health Data Exchange (GHDx) data catalogue and the code used to generate GBD results, but its primary focus is on the tools which allow users to query, view, and download, in CSV format, the following:

- Data input sources (lists of the raw data sources used to produce estimates for different components of the study, and relevant metadata about them)
- Model input data (data points adjusted to meet GBD's format and quality requirements)
- Estimates (final GBD results: the point estimates and 95% uncertainty intervals, where appropriate, for study indicators)

These tools are the GBD Results Tool, GBD Compare, Mortality Visualization (MortViz), Causes of Death Visualization (CoDViz), Epi Visualization, (EpiViz), and GBD Data Input Sources Tool. This guide offers definitions for the indicators (or “measures”) and other dimensions of the data available in them and an overview of what data users can expect to view and download from each. Lists of numeric IDs and standardized names are provided for the values in each dimension, as is a table of the measures for which estimates were produced by GBD cause.

Additional data resources for GBD 2016 are available at <http://ghdx.healthdata.org/gbd-2016>.

Information on the GBD study is available at <http://www.healthdata.org/gbd>

Contact Us

Do you have questions or comments about any of the GBD 2016 online tools?

Email us at engage@healthdata.org

Call us at +1-206-897-2800.

Fax us at +1-206-897-2899.

Write us at

Institute for Health Metrics and Evaluation
2301 Fifth Ave., Suite 600
Seattle, WA 98121
USA

Contents

Preface	2
Contact Us.....	2
Section 1: Tool Descriptions.....	4
1.1 GBD Results Tool.....	4
1.2 GBD Compare.....	4
1.3 Mortality Visualization (MortViz).....	5
1.4 Causes of Death Visualization (CoDViz)	5
1.5 Epi Visualization (EpiViz)	6
1.6 Data Input Sources Tool.....	6
1.7 GHDx	7
1.8 Code	7
Section 2: Term Definitions.....	8
Section 3: Tool Outputs and Indicators Overview	11
Section 4: Dimension Values.....	13
4.1 Age Group	13
4.2 Cause.....	14
4.3 Etiology.....	21
4.4 Impairment	22
4.5 Location.....	23
4.6 Measure	33
4.7 Model (EpiViz)	34
4.8 Risk	62
4.9 Sex.....	64
Section 5: Causes by Measure	64

1.3 Mortality Visualization (MortViz)

The Mortality Visualization (MortViz) allows users to view data and indicators of all-cause mortality. Users are able to follow each analytic step from the beginning of the data preparation to the final results and each transformation along the way. The visualization provides views of both child mortality (defined as the probability of dying between birth and age 5) and adult mortality (defined as the probability of dying between age 15 and 60) for each of the locations for which indicators are produced for the annual global GBD enterprise.

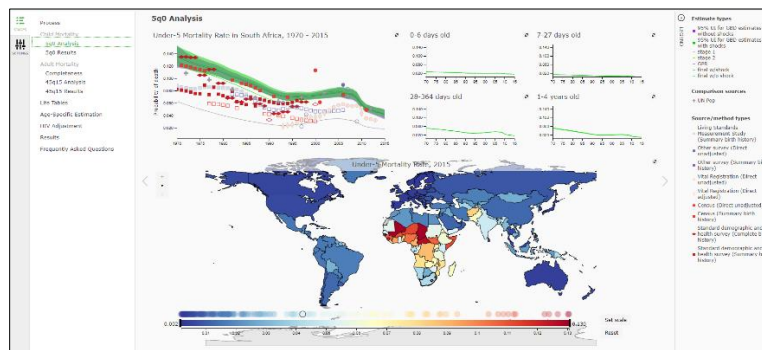


Figure 3. MortViz

MortViz is found here: <http://www.healthdata.org/data-visualization/mortality-visualization>.

1.4 Causes of Death Visualization (CoDViz)

The Causes of Death (CodViz) allows users to view data and estimates of death by cause, age, sex, and location over time. Deaths are represented as rates, cause fractions (i.e., the proportion of total deaths due to a cause), and numbers. Users have the ability to see the transformations of the input data to correct for different biases and to see the effects of garbage code redistribution. They also have access to the model parameters that were used to generate results for a given cause.

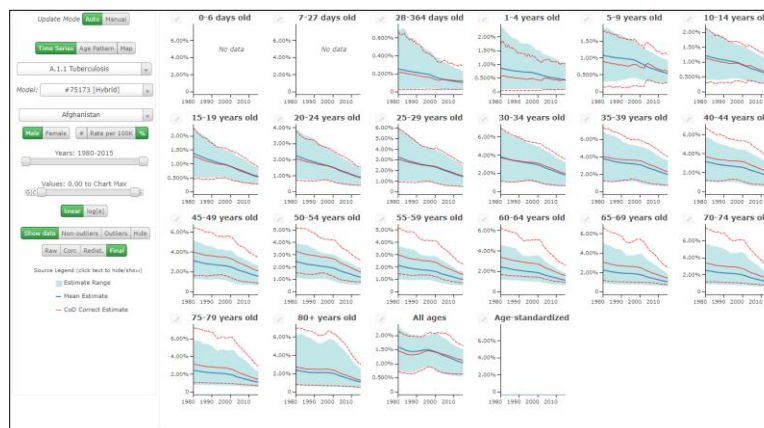


Figure 4. CoDViz

CodViz is found here: <http://www.healthdata.org/data-visualization/causes-death-cod-visualization>.

1.5 Epi Visualization (EpiViz)

The Epi Visualization (EpiViz) allows users to view data from the nonfatal health outcomes component of the GBD. It allows users to see the input data, data corrections, model settings and results of prevalence, incidence, remission, excess mortality and cause-specific mortality rates for each of the diseases and risk factors that have been analyzed in the GBD.

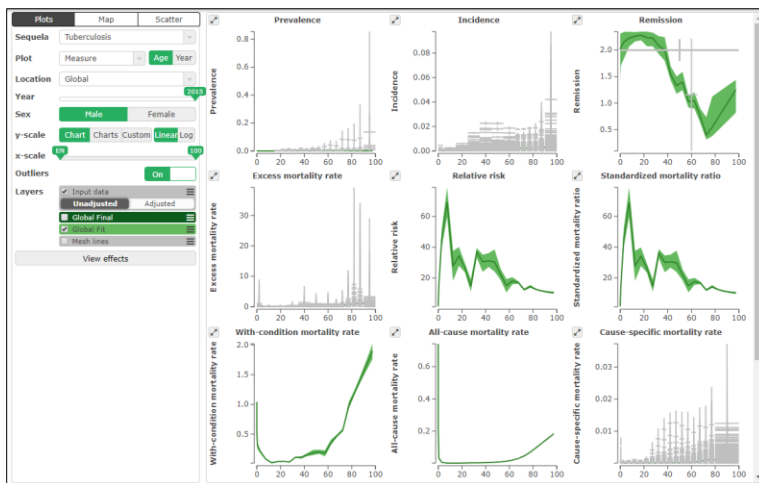


Figure 5. EpiViz

EpiViz is found here: <http://www.healthdata.org/data-visualization/epi-viz>.

1.6 Data Input Sources Tool

The Data Input Sources Tool allows users to view citations for sources of data by cause, location, and year for the most recently published set of annual results. For example, users can search for all sources associated with a particular cause and location and retrieve a set of citations used by GBD to produce those indicators.

The tool's CSV export function also provides the complete set of dimensions and metadata associated with that source.

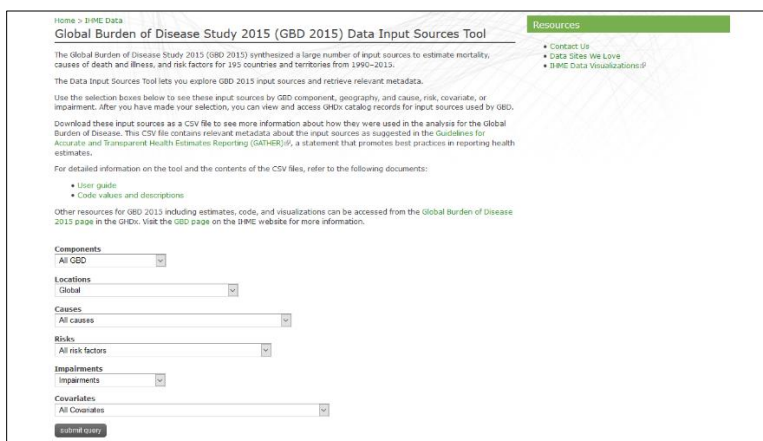


Figure 6. GBD Data Input Sources Tool

The Data Input Sources Tool is found here: <http://ghdx.healthdata.org/gbd-2016/data-input-sources>.

1.7 GHDx

The Global Health Data Exchange (GHDx) is a catalogue of data sources related to health. It includes citations for all sources used in the most recent version of the annually published GBD. (It also includes sources that are not included in or relevant to the GBD, but are health-related and may be of use to other research.) Users can perform searches based upon keyword, location, data type, and year. Full citation information is provided for all sources. Wherever possible, links are provided to the data contained in each source. Where data holders prohibit direct access to the data without further registration or request, links are provided to the relevant instructions.

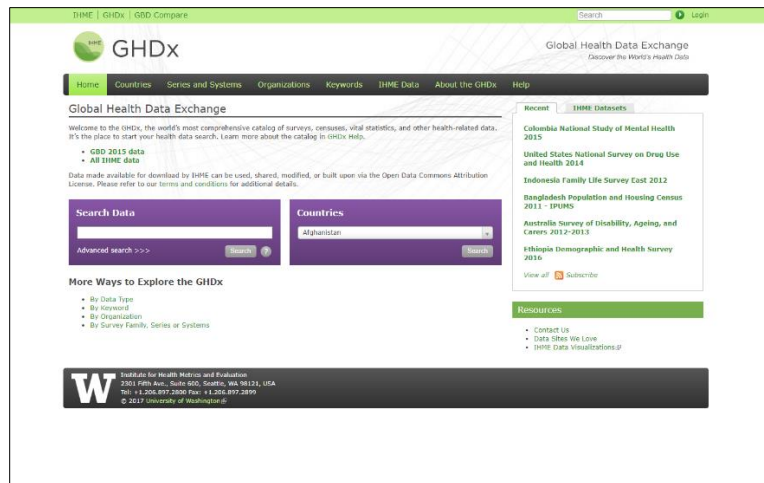


Figure 7. GHDx

The GHDx is found here: <http://ghdx.healthdata.org/>.

1.8 Code

Starting with the 2015 study, GBD publishes its analytic code in concordance with the [GATHER](#) guidelines.

Code is found here: <http://ghdx.healthdata.org/gbd-2016-code>.

Section 2: Term Definitions

Term	Definition
Age group	A population segment within a specified age range.
All-cause mortality rate	The number of deaths due to all conditions by the mid-year population.
Cause	A single disease or injury or an aggregation of diseases and injuries that causes death or disability.
Cause hierarchy	The classification of diseases and injuries. The causes in GBD are classified into 4 levels. At level 1, there are three large cause groupings: communicable, maternal and neonatal conditions and nutritional deficiencies (CMNN); non-communicable diseases (NCDs); and injuries. At level 2 there are 21 disease and injury categories. The finest level of detail in causes is provided at levels 3 and 4.
Cause-specific mortality Rate	The number of deaths due to cause divided by the mid-year population.
Continuous variable	A population characteristic that is measured on a continuous scale (e.g., the mean level of blood pressure or body mass index).
Deaths	Deaths occurring in a population during a certain time period.
Disability-adjusted life years (DALYs)	The sum of years lost due to premature death (YLLs) and years lived with disability (YLDs). DALYs are also defined as years of healthy life lost.
Etiology	The cause, set of causes, or manner of causation of a disease or condition. For example, diarrhea is a cause in the GBD. Diarrhea itself has many causes (like norovirus). Diarrhea is the cause; norovirus is the etiology.
Excess mortality rate	The number of excess deaths divided by the number of prevalent cases. It is equivalent to the cause-specific mortality rate divided by prevalence.
Expected value (life expectancy, deaths, YLLs, YLDs, DALYs)	The value of a specified measure (life expectancy, deaths, YLLs, YLDs, or DALYs) that is expected for a particular GBD location and year, given its socio-demographic development status as measured by SDI.
Fatal discontinuities	An increase in the death rate of more than 1 per million, resulting from conflict and terrorism, natural disasters, major transport accidents or epidemics.
Healthcare Access and Quality Index (HAQ)	A summary measure of personal health care access and quality for a given location. HAQ is based on risk-standardized mortality rates from causes that, in the presence of high-quality health care, should not result in death – also known as amenable mortality.
Healthy life expectancy, or Health-adjusted life expectancy (HALE)	The number of years that a person at a given age can expect to live in good health, if the rates of all-cause mortality and all-cause disability in a specified year of interest would remain constant into the future.
Impairment	Consequences (or sequelae) of multiple underlying causes for which the main source of data pertain to the sum of these across all causes. GBD currently measures 9 impairments: vision loss, hearing loss, anemia, heart failure, epilepsy, infertility, developmental intellectual disability, pelvic inflammatory disease and Guillain-Barré syndrome.

Term	Definition
Incidence	The number of new cases of a given cause during a given period in a specified population. In the results tools it is expressed as the number of new cases in a year divided by the mid-year population size. In the analytical tool EpiViz, it is defined as the number of new cases among those not yet affected by the cause in the population.
Life expectancy	The number of years a person is expected to live at a given age assuming he or she will experience the age-specific mortality rate observed in a given year throughout his or her lifetime. For GBD, the life expectancy associated with an age group (e.g., 50- to 54-year-olds) is life expectancy at the starting year of the age group.
Life expectancy (without fatal discontinuities or HIV)	Life expectancy when the impact of fatal discontinuities or the HIV epidemic is removed.
Life expectancy (without fatal discontinuities, with HIV)	Life expectancy as estimated without including the impact of fatal discontinuities but including the HIV epidemic.
Location	Includes country, non-sovereign region, principal administrative unit of a country (e.g., state, province), GBD region, or other custom administrative division, such as World Bank Income Level or WHO region.
Maternal mortality ratio (MMR)	The number of maternal deaths per 100,000 live births. GBD defines maternal deaths as any death of a woman while pregnant or within one year of termination of pregnancy, irrespective of the duration and site of the pregnancy, from any cause related to or aggravated by the pregnancy or its management but not from accidental or incidental causes. Ages included range from 10 to 54 years.
Measure	The indicator for which estimates are produced.
Metric (Units)	The unit by which a measure is expressed. E.g., number, percent, rate, etc.
Other cause mortality rate	The number of all-cause deaths minus deaths due to a specific cause divided by the mid-year population.
Prevalence	The proportion of people in a population who are a case of a disease, injury or sequela. All results in GBD refer to point prevalence.
Probability of death	The probability that a person dies during an interval of two ages (e.g., between birth and age 5), if the rates of all-cause mortality in a specified year of interest would remain constant into the future.
Probability of death (without fatal discontinuities or HIV)	The estimated probability of death without the impact of fatal discontinuities or the HIV epidemic.
Probability of death (without fatal discontinuities, with HIV)	The estimated probability of death without the impact of fatal discontinuities but including the HIV epidemic.
Proportion	The number of cases with a certain characteristic in a population (e.g., the proportion of HIV that is due to sexual transmission or the proportion of households using solid fuels for cooking).

Term	Definition
Relative risk	The ratio of the mortality rate in the diseased and the mortality rate in the non-diseased population.
Remission	The number of cases that resolve or are cured per person-year of follow-up.
Risk (Risk factor)	An attribute, behavior, exposure, or other factor which is causally associated with an increased (or decreased) probability of a disease or injury. If the probability decreased, the risk is a protective factor.
Sex	Male, female or both sexes combined.
Socio-demographic index (SDI)	A compound measure of income, average years of schooling and fertility for each GBD location and year which is used as a measure of socio-demographic development.
Standardized mortality ratio	The mortality rate in the diseased compared to the mortality rate in the entire population.
Summary exposure value (SEV)	A measure of a population's exposure to a risk factor that takes into account the extent of exposure by risk level and the severity of that risk's contribution to disease burden. SEV takes the value zero when no excess risk for a population exists and the value one when the total population is at the highest level of risk; we report SEV on a scale from 0% to 100% to emphasize that it is risk-weighted prevalence.
Uncertainty interval	A range of values that reflects the certainty of an estimate. In GBD, every estimate is calculated 1,000 times, each time sampling from distributions rather than point estimates for data inputs, data transformations and model choice. The 95 th uncertainty interval is determined by the 25 th and 975 th value of the 1,000 values after ordering them from smallest to largest. Larger uncertainty intervals can result from limited data availability, small studies, and conflicting data, while smaller uncertainty intervals can result from extensive data availability, large studies, and data that are consistent across sources.
Value	The mean value of an estimate.
With-condition mortality rate	The number of total deaths per person-year among prevalent cases. It is equivalent to the sum of other cause mortality rate and cause-specific mortality rate.
Year	The period of 365 days (or 366 days in leap years) in the Gregorian calendar divided into 12 months beginning with January and ending with December.
Years lived with disability (YLDs)	Years lived with any short-term or long-term health loss weighted for severity by the disability weights.
Years of life lost (YLLs)	Years of life lost due to premature mortality. YLLs are the multiplication of deaths and a standard life expectancy at the age of death. The standard life expectancy is derived from a life table that contains the lowest observed mortality rate at each age that has been observed in any population greater than 5 million.

Section 3: Tool Outputs and Indicators Overview

GBD 2016 Tool		GBD Results Tool	GBD Compare	MortViz	CoDViz	EpiViz	GBD Data Input Sources
GBD Component	Mortality and population	X	X	X			X
	Causes of death	X	X		X		X
	Nonfatal health Outcomes	X	X			X	X
	Risk factors	X	X				X
	Covariates						X
Output	Estimates	X	X	X	X	X	
	Model input data			X	X	X	
	Data input sources						X
Dimension	Age group	X	X	X	X	X	X
	Cause	X	X		X	X	X
	Etiology	X	X				X
	Impairment	X	X			X	X
	Location	X	X	X	X	X	X
	Risk	X	X			X	X
	Sex	X	X	X	X	X	X
	Year	X	X	X	X	X	X
Measure / Indicator	Deaths	X	X	X	X		
	Disability-adjusted life years (DALYs)	X	X				
	Years lived with disability (YLDs)	X	X				
	Years of life lost (YLLs)	X	X				
	Prevalence	X	X			X	
	Incidence	X	X			X	
	Maternal mortality ratio (MMR)	X	X				
	Life expectancy	X	X	X			
	Health-adjusted life expectancy (HALE)	X	X				
	Summary exposure value (SEV)	X	X				
	HAQ Index (Healthcare Access and Quality Index)	X	X				
	Expected value (life expectancy, deaths, YLLs, YLDs, DALYs)		X				
	Probability of death			X			
	Life expectancy (without fatal discontinuities or HIV)			X			

GBD 2016 Tool		GBD Results Tool	GBD Compare	MortViz	CoDViz	EpiViz	GBD Data Input Sources
Measure / Indicator	Life expectancy (without fatal discontinuities, with HIV)			X			
	Probability of death (without fatal discontinuities or HIV)			X			
	Probability of death (without fatal discontinuities, with HIV)			X			
	Remission					X	
	Excess mortality rate					X	
	Standardized mortality ratio					X	
	With-condition mortality rate					X	
	All-cause mortality rate			X		X	
	Cause-specific mortality rate				X	X	
	Other cause mortality rate					X	
	Proportion					X	
	Continuous measure					X	

Section 4: Dimension Values

This section contains numeric IDs and standardized names for the values included in each of the following dimensions. Both IDs and names come from an IHME database for dimensions shared among GBD components, projects, and tools. The IDs are created by the database and commonly appear in CSV downloads from the GBD Results Tool, MortViz, CoDViz, and EpiViz.

4.1 Age Group

Please note: the following list is an aggregate of all Age group values that appear in GBD online tools. No tool includes all the values listed.

Age Group ID	Age Group Name
1	Under 5 years
2	0-6 days [Early Neonatal]
3	7-27 days [Late Neonatal]
4	28-364 days [Post Neonatal]
5	1-4 years
6	5-9 years
7	10-14 years
8	15-19 years
9	20-24 years
10	25-29 years
11	30-34 years
12	35-39 years
13	40-44 years
14	45-49 years
15	50-54 years
16	55-59 years
17	60-64 years
18	65-69 years
19	70-74 years
20	75-79 years
21	80+ years
22	All ages
23	5-14 years
24	15-49 years
25	50-69 years
26	70+ years
27	Age-standardized
28	<1 year
30	80 to 84 year
31	85 to 89 years
32	90 to 94 years
33	95 to 99 years
44	100 to 104 years
45	105 to 109 years
148	110+ years

Age Group ID	Age Group Name
155	15 to 60 years
159	10 to 24 years
162	10 to 19 years
169	10 to 54 years
235	95+ years

4.2 Cause

Cause ID	Cause Name	Hierarchy
294	All causes	Total
295	Communicable, maternal, neonatal, and nutritional diseases	A
296	HIV/AIDS and tuberculosis	A.1
297	Tuberculosis	A.1.1
934	Drug-susceptible tuberculosis	A.1.1.1
946	Multidrug-resistant tuberculosis without extensive drug resistance	A.1.1.2
947	Extensively drug-resistant tuberculosis	A.1.1.3
954	Latent tuberculosis infection	A.1.1.4
298	HIV/AIDS	A.1.2
948	Drug-susceptible HIV/AIDS - Tuberculosis	A.1.2.1
949	Multidrug-resistant HIV/AIDS - Tuberculosis without extensive drug resistance	A.1.2.2
950	Extensively drug-resistant HIV/AIDS - Tuberculosis	A.1.2.3
300	HIV/AIDS resulting in other diseases	A.1.2.4
301	Diarrhea, lower respiratory, and other common infectious diseases	A.2
302	Diarrheal diseases	A.2.1
318	Intestinal infectious diseases	A.2.2
319	Typhoid fever	A.2.2.1
320	Paratyphoid fever	A.2.2.2
321	Other intestinal infectious diseases	A.2.2.3
322	Lower respiratory infections	A.2.3
328	Upper respiratory infections	A.2.4
329	Otitis media	A.2.5
332	Meningitis	A.2.6
333	Pneumococcal meningitis	A.2.6.1
334	H influenzae type B meningitis	A.2.6.2
335	Meningococcal meningitis	A.2.6.3
336	Other meningitis	A.2.6.4
337	Encephalitis	A.2.7
338	Diphtheria	A.2.8
339	Whooping cough	A.2.9
340	Tetanus	A.2.10
341	Measles	A.2.11
342	Varicella and herpes zoster	A.2.12

Cause ID	Cause Name	Hierarchy
344	Neglected tropical diseases and malaria	A.3
345	Malaria	A.3.1
346	Chagas disease	A.3.2
347	Leishmaniasis	A.3.3
348	Visceral leishmaniasis	A.3.3.1
349	Cutaneous and mucocutaneous leishmaniasis	A.3.3.2
350	African trypanosomiasis	A.3.4
351	Schistosomiasis	A.3.5
352	Cysticercosis	A.3.6
353	Cystic echinococcosis	A.3.7
354	Lymphatic filariasis	A.3.8
355	Onchocerciasis	A.3.9
356	Trachoma	A.3.10
357	Dengue	A.3.11
358	Yellow fever	A.3.12
359	Rabies	A.3.13
360	Intestinal nematode infections	A.3.14
361	Ascariasis	A.3.14.1
362	Trichuriasis	A.3.14.2
363	Hookworm disease	A.3.14.3
364	Food-borne trematodiasis	A.3.15
405	Leprosy	A.3.16
843	Ebola	A.3.17
935	Zika virus	A.3.18
936	Guinea worm disease	A.3.19
365	Other neglected tropical diseases	A.3.20
366	Maternal disorders	A.4
367	Maternal hemorrhage	A.4.1
368	Maternal sepsis and other maternal infections	A.4.2
369	Maternal hypertensive disorders	A.4.3
370	Maternal obstructed labor and uterine rupture	A.4.4
371	Maternal abortion, miscarriage, and ectopic pregnancy	A.4.5
375	Indirect maternal deaths	A.4.6
376	Late maternal deaths	A.4.7
741	Maternal deaths aggravated by HIV/AIDS	A.4.8
379	Other maternal disorders	A.4.9
380	Neonatal disorders	A.5
381	Neonatal preterm birth complications	A.5.1
382	Neonatal encephalopathy due to birth asphyxia and trauma	A.5.2
383	Neonatal sepsis and other neonatal infections	A.5.3
384	Hemolytic disease and other neonatal jaundice	A.5.4
385	Other neonatal disorders	A.5.5
386	Nutritional deficiencies	A.6
387	Protein-energy malnutrition	A.6.1
388	Iodine deficiency	A.6.2

Cause ID	Cause Name	Hierarchy
389	Vitamin A deficiency	A.6.3
390	Iron-deficiency anemia	A.6.4
391	Other nutritional deficiencies	A.6.5
392	Other communicable, maternal, neonatal, and nutritional diseases	A.7
393	Sexually transmitted diseases excluding HIV	A.7.1
394	Syphilis	A.7.1.1
395	Chlamydial infection	A.7.1.2
396	Gonococcal infection	A.7.1.3
397	Trichomoniasis	A.7.1.4
398	Genital herpes	A.7.1.5
399	Other sexually transmitted diseases	A.7.1.6
400	Hepatitis	A.7.2
401	Acute hepatitis A	A.7.2.1
402	Hepatitis B	A.7.2.2
403	Hepatitis C	A.7.2.3
404	Acute hepatitis E	A.7.2.4
408	Other infectious diseases	A.7.3
409	Non-communicable diseases	B
410	Neoplasms	B.1
444	Lip and oral cavity cancer	B.1.1
447	Nasopharynx cancer	B.1.2
450	Other pharynx cancer	B.1.3
411	Esophageal cancer	B.1.4
414	Stomach cancer	B.1.5
441	Colon and rectum cancer	B.1.6
417	Liver cancer	B.1.7
418	Liver cancer due to hepatitis B	B.1.7.1
419	Liver cancer due to hepatitis C	B.1.7.2
420	Liver cancer due to alcohol use	B.1.7.3
421	Liver cancer due to other causes	B.1.7.4
453	Gallbladder and biliary tract cancer	B.1.8
456	Pancreatic cancer	B.1.9
423	Larynx cancer	B.1.10
426	Tracheal, bronchus, and lung cancer	B.1.11
459	Malignant skin melanoma	B.1.12
462	Non-melanoma skin cancer	B.1.13
849	Non-melanoma skin cancer (squamous-cell carcinoma)	B.1.13.1
850	Non-melanoma skin cancer (basal-cell carcinoma)	B.1.13.2
429	Breast cancer	B.1.14
432	Cervical cancer	B.1.15
435	Uterine cancer	B.1.16
465	Ovarian cancer	B.1.17
438	Prostate cancer	B.1.18
468	Testicular cancer	B.1.19

Cause ID	Cause Name	Hierarchy
471	Kidney cancer	B.1.20
474	Bladder cancer	B.1.21
477	Brain and nervous system cancer	B.1.22
480	Thyroid cancer	B.1.23
483	Mesothelioma	B.1.24
484	Hodgkin lymphoma	B.1.25
485	Non-Hodgkin lymphoma	B.1.26
486	Multiple myeloma	B.1.27
487	Leukemia	B.1.28
845	Acute lymphoid leukemia	B.1.28.1
846	Chronic lymphoid leukemia	B.1.28.2
847	Acute myeloid leukemia	B.1.28.3
848	Chronic myeloid leukemia	B.1.28.4
943	Other leukemia	B.1.28.5
488	Other neoplasms	B.1.29
491	Cardiovascular diseases	B.2
492	Rheumatic heart disease	B.2.1
493	Ischemic heart disease	B.2.2
494	Cerebrovascular disease	B.2.3
495	Ischemic stroke	B.2.3.1
496	Hemorrhagic stroke	B.2.3.2
498	Hypertensive heart disease	B.2.4
499	Cardiomyopathy and myocarditis	B.2.5
942	Myocarditis	B.2.5.1
938	Alcoholic cardiomyopathy	B.2.5.2
944	Other cardiomyopathy	B.2.5.3
500	Atrial fibrillation and flutter	B.2.6
501	Aortic aneurysm	B.2.7
502	Peripheral artery disease	B.2.8
503	Endocarditis	B.2.9
507	Other cardiovascular and circulatory diseases	B.2.10
508	Chronic respiratory diseases	B.3
509	Chronic obstructive pulmonary disease	B.3.1
510	Pneumoconiosis	B.3.2
511	Silicosis	B.3.2.1
512	Asbestosis	B.3.2.2
513	Coal workers pneumoconiosis	B.3.2.3
514	Other pneumoconiosis	B.3.2.4
515	Asthma	B.3.3
516	Interstitial lung disease and pulmonary sarcoidosis	B.3.4
520	Other chronic respiratory diseases	B.3.5
521	Cirrhosis and other chronic liver diseases	B.4
522	Cirrhosis and other chronic liver diseases due to hepatitis B	B.4.1
523	Cirrhosis and other chronic liver diseases due to hepatitis C	B.4.2
524	Cirrhosis and other chronic liver diseases due to alcohol use	B.4.3

Cause ID	Cause Name	Hierarchy
525	Cirrhosis and other chronic liver diseases due to other causes	B.4.4
526	Digestive diseases	B.5
527	Peptic ulcer disease	B.5.1
528	Gastritis and duodenitis	B.5.2
529	Appendicitis	B.5.3
530	Paralytic ileus and intestinal obstruction	B.5.4
531	Inguinal, femoral, and abdominal hernia	B.5.5
532	Inflammatory bowel disease	B.5.6
533	Vascular intestinal disorders	B.5.7
534	Gallbladder and biliary diseases	B.5.8
535	Pancreatitis	B.5.9
541	Other digestive diseases	B.5.10
542	Neurological disorders	B.6
543	Alzheimer disease and other dementias	B.6.1
544	Parkinson disease	B.6.2
545	Epilepsy	B.6.3
546	Multiple sclerosis	B.6.4
554	Motor neuron disease	B.6.5
547	Migraine	B.6.6
548	Tension-type headache	B.6.7
557	Other neurological disorders	B.6.8
558	Mental and substance use disorders	B.7
559	Schizophrenia	B.7.1
560	Alcohol use disorders	B.7.2
561	Drug use disorders	B.7.3
562	Opioid use disorders	B.7.3.1
563	Cocaine use disorders	B.7.3.2
564	Amphetamine use disorders	B.7.3.3
565	Cannabis use disorders	B.7.3.4
566	Other drug use disorders	B.7.3.5
567	Depressive disorders	B.7.4
568	Major depressive disorder	B.7.4.1
569	Dysthymia	B.7.4.2
570	Bipolar disorder	B.7.5
571	Anxiety disorders	B.7.6
572	Eating disorders	B.7.7
573	Anorexia nervosa	B.7.7.1
574	Bulimia nervosa	B.7.7.2
575	Autistic spectrum disorders	B.7.8
576	Autism	B.7.8.1
577	Asperger syndrome and other autistic spectrum disorders	B.7.8.2
578	Attention-deficit/hyperactivity disorder	B.7.9
579	Conduct disorder	B.7.10
582	Idiopathic developmental intellectual disability	B.7.11

Cause ID	Cause Name	Hierarchy
585	Other mental and substance use disorders	B.7.12
586	Diabetes, urogenital, blood, and endocrine diseases	B.8
587	Diabetes mellitus	B.8.1
588	Acute glomerulonephritis	B.8.2
589	Chronic kidney disease	B.8.3
590	Chronic kidney disease due to diabetes mellitus	B.8.3.1
591	Chronic kidney disease due to hypertension	B.8.3.2
592	Chronic kidney disease due to glomerulonephritis	B.8.3.3
593	Chronic kidney disease due to other causes	B.8.3.4
594	Urinary diseases and male infertility	B.8.4
595	Interstitial nephritis and urinary tract infections	B.8.4.1
596	Urolithiasis	B.8.4.2
597	Benign prostatic hyperplasia	B.8.4.3
598	Male infertility	B.8.4.4
602	Other urinary diseases	B.8.4.5
603	Gynecological diseases	B.8.5
604	Uterine fibroids	B.8.5.1
605	Polycystic ovarian syndrome	B.8.5.2
606	Female infertility	B.8.5.3
607	Endometriosis	B.8.5.4
608	Genital prolapse	B.8.5.5
609	Premenstrual syndrome	B.8.5.6
612	Other gynecological diseases	B.8.5.7
613	Hemoglobinopathies and hemolytic anemias	B.8.6
614	Thalassemias	B.8.6.1
837	Thalassemias trait	B.8.6.2
615	Sickle cell disorders	B.8.6.3
838	Sickle cell trait	B.8.6.4
616	G6PD deficiency	B.8.6.5
839	G6PD trait	B.8.6.6
618	Other hemoglobinopathies and hemolytic anemias	B.8.6.7
619	Endocrine, metabolic, blood, and immune disorders	B.8.7
626	Musculoskeletal disorders	B.9
627	Rheumatoid arthritis	B.9.1
628	Osteoarthritis	B.9.2
629	Low back and neck pain	B.9.3
630	Low back pain	B.9.3.1
631	Neck pain	B.9.3.2
632	Gout	B.9.4
639	Other musculoskeletal disorders	B.9.5
640	Other non-communicable diseases	B.10
641	Congenital birth defects	B.10.1
642	Neural tube defects	B.10.1.1
643	Congenital heart anomalies	B.10.1.2
644	Orofacial clefts	B.10.1.3

Cause ID	Cause Name	Hierarchy
645	Down syndrome	B.10.1.4
646	Turner syndrome	B.10.1.5
647	Klinefelter syndrome	B.10.1.6
648	Other chromosomal abnormalities	B.10.1.7
649	Congenital musculoskeletal and limb anomalies	B.10.1.8
650	Urogenital congenital anomalies	B.10.1.9
651	Digestive congenital anomalies	B.10.1.10
652	Other congenital birth defects	B.10.1.11
653	Skin and subcutaneous diseases	B.10.2
654	Dermatitis	B.10.2.1
655	Psoriasis	B.10.2.2
656	Cellulitis	B.10.2.3
657	Pyoderma	B.10.2.4
658	Scabies	B.10.2.5
659	Fungal skin diseases	B.10.2.6
660	Viral skin diseases	B.10.2.7
661	Acne vulgaris	B.10.2.8
662	Alopecia areata	B.10.2.9
663	Pruritus	B.10.2.10
664	Urticaria	B.10.2.11
665	Decubitus ulcer	B.10.2.12
668	Other skin and subcutaneous diseases	B.10.2.13
669	Sense organ diseases	B.10.3
670	Glaucoma	B.10.3.1
671	Cataract	B.10.3.2
672	Macular degeneration	B.10.3.3
673	Refraction and accommodation disorders	B.10.3.4
674	Age-related and other hearing loss	B.10.3.5
675	Other vision loss	B.10.3.6
679	Other sense organ diseases	B.10.3.7
680	Oral disorders	B.10.4
681	Caries of deciduous teeth	B.10.4.1
682	Caries of permanent teeth	B.10.4.2
683	Periodontal diseases	B.10.4.3
684	Edentulism and severe tooth loss	B.10.4.4
685	Other oral disorders	B.10.4.5
686	Sudden infant death syndrome	B.10.5
687	Injuries	C
688	Transport injuries	C.1
689	Road injuries	C.1.1
690	Pedestrian road injuries	C.1.1.1
691	Cyclist road injuries	C.1.1.2
692	Motorcyclist road injuries	C.1.1.3
693	Motor vehicle road injuries	C.1.1.4
694	Other road injuries	C.1.1.5

Cause ID	Cause Name	Hierarchy
695	Other transport injuries	C.1.2
696	Unintentional injuries	C.2
697	Falls	C.2.1
698	Drowning	C.2.2
699	Fire, heat, and hot substances	C.2.3
700	Poisonings	C.2.4
704	Exposure to mechanical forces	C.2.5
705	Unintentional firearm injuries	C.2.5.1
706	Unintentional suffocation	C.2.5.2
707	Other exposure to mechanical forces	C.2.5.3
708	Adverse effects of medical treatment	C.2.6
709	Animal contact	C.2.7
710	Venomous animal contact	C.2.7.1
711	Non-venomous animal contact	C.2.7.2
712	Foreign body	C.2.8
713	Pulmonary aspiration and foreign body in airway	C.2.8.1
714	Foreign body in eyes	C.2.8.2
715	Foreign body in other body part	C.2.8.3
842	Environmental heat and cold exposure	C.2.9
716	Other unintentional injuries	C.2.10
717	Self-harm and interpersonal violence	C.3
718	Self-harm	C.3.1
721	Self-harm by firearm	C.3.1.1
723	Self-harm by other specified means	C.3.1.2
724	Interpersonal violence	C.3.2
725	Physical violence by firearm	C.3.2.1
726	Physical violence by sharp object	C.3.2.2
941	Sexual violence	C.3.2.3
727	Physical violence by other means	C.3.2.4
728	Forces of nature, conflict and terrorism, and executions and police conflict	C.4
729	Exposure to forces of nature	C.4.1
945	Conflict and terrorism	C.4.3
854	Executions and police conflict	C.4.2

4.3 Etiology

Etiology ID	Etiology Name
171	Etiologies
172	Diarrheal disease etiologies
173	Cholera
174	Other salmonella infections
175	Shigellosis
176	Enteropathogenic E coli infection
177	Enterotoxigenic E coli infection

178	Campylobacter enteritis
179	Amoebiasis
180	Cryptosporidiosis
181	Rotaviral enteritis
182	Aeromonas
183	Clostridium difficile
184	Norovirus
185	Adenovirus
186	Lower respiratory infection etiologies
187	Influenza
188	Pneumococcal pneumonia
189	H influenzae type B pneumonia
190	Respiratory syncytial virus pneumonia

4.4 Impairment

Impairment ID	Impairment Name
191	Impairments
192	Anemia
205	Mild anemia
206	Moderate anemia
207	Severe anemia
193	Epilepsy
208	Treated epilepsy
209	Moderate epilepsy
210	Severe epilepsy
194	Guillain-Barré syndrome
195	Hearing loss
211	Mild hearing loss
212	Moderate hearing loss
213	Moderately severe hearing loss
214	Severe hearing loss
215	Profound hearing loss
216	Complete hearing loss
196	Heart failure
217	Mild heart failure
218	Moderate heart failure
219	Severe heart failure
198	Infertility
220	Primary infertility
221	Secondary infertility
197	Developmental intellectual disability
236	Borderline intellectual disability
222	Mild intellectual disability
223	Moderate intellectual disability
224	Severe intellectual disability

Impairment ID	Impairment Name
225	Profound intellectual disability
199	Pelvic inflammatory disease
226	Moderate pelvic inflammatory disease
227	Severe pelvic inflammatory disease
200	Vision loss
228	Mild vision loss
229	Moderate vision loss
230	Severe vision loss
231	Blindness
232	Monocular vision loss
233	Presbyopia

4.5 Location

Notes on Location Type:

- **Region** and **Super region** are not actual geopolitical units but groupings of countries created for analytical purposes by GBD. Region also indicates **Custom regions** such as WHO regions and OECD countries.
- **Subnational** typically represents the first-order administrative division of a country, such as a province in China or state in the United States, though it can represent a custom analytical unit, such as “Sweden without Stockholm,” or a more granular political unit, such as a second- or third-order country administrative division.
- **Subnational locations** for which **GBD 2016 results** are currently available in the tools (this list will be updated as results for additional subnational locations are released):
 - **Brazil:** 27 states
 - **Japan:** 47 prefectures
 - **Mexico:** 31 states and the Federal District (Mexico City)
 - **Sweden:** 2 regions: Stockholm, and Sweden without Stockholm
 - **United Kingdom:**
 - 4 nations of the UK: England, Northern Ireland, Scotland, and Wales
 - 9 regions of England
 - **United States:** 50 states and the District of Columbia

Location ID	Location Name	Location Type
1	Global	Global
44635	High SDI	Region
44634	High-middle SDI	Region
44639	Middle SDI	Region
44636	Low-middle SDI	Region
44637	Low SDI	Region
64	High-income	Super region
100	High-income North America	Region
101	Canada	Country
349	Greenland	Territory

Location ID	Location Name	Location Type
102	United States	Country
523	Alabama	Subnational
524	Alaska	Subnational
525	Arizona	Subnational
526	Arkansas	Subnational
527	California	Subnational
528	Colorado	Subnational
529	Connecticut	Subnational
530	Delaware	Subnational
531	District of Columbia	Subnational
532	Florida	Subnational
533	Georgia	Subnational
534	Hawaii	Subnational
535	Idaho	Subnational
536	Illinois	Subnational
537	Indiana	Subnational
538	Iowa	Subnational
539	Kansas	Subnational
540	Kentucky	Subnational
541	Louisiana	Subnational
542	Maine	Subnational
543	Maryland	Subnational
544	Massachusetts	Subnational
545	Michigan	Subnational
546	Minnesota	Subnational
547	Mississippi	Subnational
548	Missouri	Subnational
549	Montana	Subnational
550	Nebraska	Subnational
551	Nevada	Subnational
552	New Hampshire	Subnational
553	New Jersey	Subnational
554	New Mexico	Subnational
555	New York	Subnational
556	North Carolina	Subnational
557	North Dakota	Subnational
558	Ohio	Subnational
559	Oklahoma	Subnational
560	Oregon	Subnational
561	Pennsylvania	Subnational
562	Rhode Island	Subnational
563	South Carolina	Subnational
564	South Dakota	Subnational
565	Tennessee	Subnational
566	Texas	Subnational

Location ID	Location Name	Location Type
567	Utah	Subnational
568	Vermont	Subnational
569	Virginia	Subnational
570	Washington	Subnational
571	West Virginia	Subnational
572	Wisconsin	Subnational
573	Wyoming	Subnational
70	Australasia	Region
71	Australia	Country
72	New Zealand	Country
65	High-income Asia Pacific	Region
66	Brunei	Country
67	Japan	Country
35446	Aichi	Subnational
35428	Akita	Subnational
35425	Aomori	Subnational
35435	Chiba	Subnational
35461	Ehime	Subnational
35441	Fukui	Subnational
35463	Fukuoka	Subnational
35430	Fukushima	Subnational
35444	Gifu	Subnational
35433	Gunma	Subnational
35457	Hiroshima	Subnational
35424	Hokkaidō	Subnational
35451	Hyōgo	Subnational
35431	Ibaraki	Subnational
35440	Ishikawa	Subnational
35426	Iwate	Subnational
35460	Kagawa	Subnational
35469	Kagoshima	Subnational
35437	Kanagawa	Subnational
35462	Kōchi	Subnational
35466	Kumamoto	Subnational
35449	Kyōto	Subnational
35447	Mie	Subnational
35427	Miyagi	Subnational
35468	Miyazaki	Subnational
35443	Nagano	Subnational
35465	Nagasaki	Subnational
35452	Nara	Subnational
35438	Niigata	Subnational
35467	Ōita	Subnational
35456	Okayama	Subnational
35470	Okinawa	Subnational

Location ID	Location Name	Location Type
35450	Ōsaka	Subnational
35464	Saga	Subnational
35434	Saitama	Subnational
35448	Shiga	Subnational
35455	Shimane	Subnational
35445	Shizuoka	Subnational
35432	Tochigi	Subnational
35459	Tokushima	Subnational
35436	Tōkyō	Subnational
35454	Tottori	Subnational
35439	Toyama	Subnational
35453	Wakayama	Subnational
35429	Yamagata	Subnational
35458	Yamaguchi	Subnational
35442	Yamanashi	Subnational
69	Singapore	Country
68	South Korea	Country
73	Western Europe	Region
74	Andorra	Country
75	Austria	Country
76	Belgium	Country
77	Cyprus	Country
78	Denmark	Country
79	Finland	Country
80	France	Country
81	Germany	Country
82	Greece	Country
83	Iceland	Country
84	Ireland	Country
85	Israel	Country
86	Italy	Country
87	Luxembourg	Country
88	Malta	Country
89	Netherlands	Country
90	Norway	Country
91	Portugal	Country
92	Spain	Country
93	Sweden	Country
4944	Stockholm	Subnational
4940	Sweden except Stockholm	Subnational
94	Switzerland	Country
95	United Kingdom	Country
4749	England	Subnational
4621	East Midlands	Subnational
4623	East of England	Subnational

Location ID	Location Name	Location Type
4624	Greater London	Subnational
4618	North East England	Subnational
4619	North West England	Subnational
4625	South East England	Subnational
4626	South West England	Subnational
4622	West Midlands	Subnational
4620	Yorkshire and the Humber	Subnational
433	Northern Ireland	Subnational
434	Scotland	Subnational
4636	Wales	Subnational
96	Southern Latin America	Region
97	Argentina	Country
98	Chile	Country
99	Uruguay	Country
31	Central Europe, Eastern Europe, and Central Asia	Super region
56	Eastern Europe	Region
57	Belarus	Country
58	Estonia	Country
59	Latvia	Country
60	Lithuania	Country
61	Moldova	Country
62	Russia	Country
63	Ukraine	Country
42	Central Europe	Region
43	Albania	Country
44	Bosnia and Herzegovina	Country
45	Bulgaria	Country
46	Croatia	Country
47	Czech Republic	Country
48	Hungary	Country
49	Macedonia	Country
50	Montenegro	Country
51	Poland	Country
52	Romania	Country
53	Serbia	Country
54	Slovakia	Country
55	Slovenia	Country
32	Central Asia	Region
33	Armenia	Country
34	Azerbaijan	Country
35	Georgia	Country
36	Kazakhstan	Country
37	Kyrgyzstan	Country
38	Mongolia	Country
39	Tajikistan	Country

Location ID	Location Name	Location Type
40	Turkmenistan	Country
41	Uzbekistan	Country
103	Latin America and Caribbean	Super region
124	Central Latin America	Region
125	Colombia	Country
126	Costa Rica	Country
127	El Salvador	Country
128	Guatemala	Country
129	Honduras	Country
130	Mexico	Country
4643	Aguascalientes	Subnational
4644	Baja California	Subnational
4645	Baja California Sur	Subnational
4646	Campeche	Subnational
4649	Chiapas	Subnational
4650	Chihuahua	Subnational
4647	Coahuila	Subnational
4648	Colima	Subnational
4651	Mexico City [Distrito Federal]	Subnational
4652	Durango	Subnational
4653	Guanajuato	Subnational
4654	Guerrero	Subnational
4655	Hidalgo	Subnational
4656	Jalisco	Subnational
4657	México	Subnational
4658	Michoacán de Ocampo	Subnational
4659	Morelos	Subnational
4660	Nayarit	Subnational
4661	Nuevo León	Subnational
4662	Oaxaca	Subnational
4663	Puebla	Subnational
4664	Querétaro	Subnational
4665	Quintana Roo	Subnational
4666	San Luis Potosí	Subnational
4667	Sinaloa	Subnational
4668	Sonora	Subnational
4669	Tabasco	Subnational
4670	Tamaulipas	Subnational
4671	Tlaxcala	Subnational
4672	Veracruz de Ignacio de la Llave	Subnational
4673	Yucatán	Subnational
4674	Zacatecas	Subnational
131	Nicaragua	Country
132	Panama	Country
133	Venezuela	Country

Location ID	Location Name	Location Type
120	Andean Latin America	Region
121	Bolivia	Country
122	Ecuador	Country
123	Peru	Country
104	Caribbean	Region
105	Antigua and Barbuda	Country
106	The Bahamas	Country
107	Barbados	Country
108	Belize	Country
305	Bermuda	Territory
109	Cuba	Country
110	Dominica	Country
111	Dominican Republic	Country
112	Grenada	Country
113	Guyana	Country
114	Haiti	Country
115	Jamaica	Country
385	Puerto Rico	Territory
116	Saint Lucia	Country
117	Saint Vincent and the Grenadines	Country
118	Suriname	Country
119	Trinidad and Tobago	Country
422	Virgin Islands, U.S.	Territory
134	Tropical Latin America	Region
135	Brazil	Country
4750	Acre	Subnational
4751	Alagoas	Subnational
4753	Amapá	Subnational
4752	Amazonas	Subnational
4754	Bahia	Subnational
4755	Ceará	Subnational
4756	Distrito Federal	Subnational
4757	Espírito Santo	Subnational
4758	Goiás	Subnational
4759	Maranhão	Subnational
4762	Mato Grosso	Subnational
4761	Mato Grosso do Sul	Subnational
4760	Minas Gerais	Subnational
4763	Pará	Subnational
4764	Paraíba	Subnational
4765	Paraná	Subnational
4766	Pernambuco	Subnational
4767	Piauí	Subnational
4768	Rio de Janeiro	Subnational
4769	Rio Grande do Norte	Subnational

Location ID	Location Name	Location Type
4772	Rio Grande do Sul	Subnational
4770	Rondônia	Subnational
4771	Roraima	Subnational
4773	Santa Catarina	Subnational
4775	São Paulo	Subnational
4774	Sergipe	Subnational
4776	Tocantins	Subnational
136	Paraguay	Country
4	Southeast Asia, East Asia, and Oceania	Super region
5	East Asia	Region
6	China	Country
7	North Korea	Country
8	Taiwan	Country
9	Southeast Asia	Region
10	Cambodia	Country
11	Indonesia	Country
12	Laos	Country
13	Malaysia	Country
14	Maldives	Country
183	Mauritius	Country
15	Myanmar	Country
16	Philippines	Country
17	Sri Lanka	Country
186	Seychelles	Country
18	Thailand	Country
19	Timor-Leste	Country
20	Vietnam	Country
21	Oceania	Region
298	American Samoa	Territory
25	Federated States of Micronesia	Country
22	Fiji	Country
351	Guam	Territory
23	Kiribati	Country
24	Marshall Islands	Country
376	Northern Mariana Islands	Territory
26	Papua New Guinea	Country
27	Samoa	Country
28	Solomon Islands	Country
29	Tonga	Country
30	Vanuatu	Country
137	North Africa and Middle East	Super region
138	North Africa and Middle East	Region
160	Afghanistan	Country
139	Algeria	Country
140	Bahrain	Country

Location ID	Location Name	Location Type
141	Egypt	Country
142	Iran	Country
143	Iraq	Country
144	Jordan	Country
145	Kuwait	Country
146	Lebanon	Country
147	Libya	Country
148	Morocco	Country
149	Palestine	Country
150	Oman	Country
151	Qatar	Country
152	Saudi Arabia	Country
522	Sudan	Country
153	Syria	Country
154	Tunisia	Country
155	Turkey	Country
156	United Arab Emirates	Country
157	Yemen	Country
158	South Asia	Super region
159	South Asia	Region
161	Bangladesh	Country
162	Bhutan	Country
163	India	Country
164	Nepal	Country
165	Pakistan	Country
166	Sub-Saharan Africa	Super region
192	Southern Sub-Saharan Africa	Region
193	Botswana	Country
194	Lesotho	Country
195	Namibia	Country
196	South Africa	Country
197	Swaziland	Country
198	Zimbabwe	Country
199	Western Sub-Saharan Africa	Region
200	Benin	Country
201	Burkina Faso	Country
202	Cameroon	Country
203	Cape Verde	Country
204	Chad	Country
205	Cote d'Ivoire	Country
206	The Gambia	Country
207	Ghana	Country
208	Guinea	Country
209	Guinea-Bissau	Country
210	Liberia	Country

Location ID	Location Name	Location Type
211	Mali	Country
212	Mauritania	Country
213	Niger	Country
214	Nigeria	Country
215	Sao Tome and Principe	Country
216	Senegal	Country
217	Sierra Leone	Country
218	Togo	Country
174	Eastern Sub-Saharan Africa	Region
175	Burundi	Country
176	Comoros	Country
177	Djibouti	Country
178	Eritrea	Country
179	Ethiopia	Country
180	Kenya	Country
181	Madagascar	Country
182	Malawi	Country
184	Mozambique	Country
185	Rwanda	Country
187	Somalia	Country
435	South Sudan	Country
189	Tanzania	Country
190	Uganda	Country
191	Zambia	Country
167	Central Sub-Saharan Africa	Region
168	Angola	Country
169	Central African Republic	Country
170	Congo	Country
171	Democratic Republic of the Congo	Country
172	Equatorial Guinea	Country
173	Gabon	Country
44587	African Union	Region
44534	Commonwealth	Region
44535	Commonwealth High Income	Region
44536	Commonwealth Middle Income	Region
44537	Commonwealth Low Income	Region
4743	European Union	Region
44590	Four World Regions	Region
44559	Africa	Region
44560	America	Region
44561	Asia	Region
44562	Europe	Region
44586	G20	Region
44642	Nordic Region	Region
44584	OECD Countries	Region

Location ID	Location Name	Location Type
479	WHO region	Region
44563	African Region	Region
44567	Eastern Mediterranean Region	Region
44566	European Region	Region
44564	Region of the Americas	Region
44565	South-East Asia Region	Region
44568	Western Pacific Region	Region
44591	World Bank Income Levels	Region
44575	World Bank High Income	Region
44578	World Bank Low Income	Region
44577	World Bank Lower Middle Income	Region
44576	World Bank Upper Middle Income	Region
478	World Bank Regions	Region
239	East Asia & Pacific - WB	Region
240	Europe & Central Asia - WB	Region
241	Latin America & Caribbean - WB	Region
243	Middle East & North Africa - WB	Region
44638	North America	Region
244	South Asia - WB	Region
242	Sub-Saharan Africa - WB	Region

4.6 Measure

Measure ID	Measure Name
1	Deaths
2	DALYs (Disability-adjusted life years)
3	YLDs (Years lived with disability)
4	YLLs (Years of life lost)
5	Prevalence
6	Incidence
7	Remission
9	Excess mortality rate
12	Standardized mortality ratio
13	With-condition mortality rate
14	All-cause mortality rate
15	Cause-specific mortality rate
16	Other cause mortality rate
18	Proportion
19	Continuous
25	Maternal mortality ratio
26	Life expectancy
27	Probability of death
28	HALE (Healthy life expectancy)

Measure ID	Measure Name
29	Summary exposure value
30	Life expectancy (without fatal discontinuities or HIV)
31	Life expectancy (without fatal discontinuities, with HIV)
32	Probability of death (without fatal discontinuities or HIV)
33	Probability of death (without fatal discontinuities, with HIV)
43	HAQ Index (Healthcare Access and Quality Index)

4.7 Model (EpiViz)

The following items are available from the “Model” menu in [EpiViz](#). These are conditions modeled as part of the nonfatal health outcomes component of GBD. The official GBD cause, risk, or impairment to which each condition corresponds is provided on the right.

Model ID	Model Name	Cause, Risk, or Impairment ID	Cause, Risk, or Impairment Name
1177	Early HIV	300	HIV/AIDS resulting in other diseases
1178	Symptomatic HIV	300	HIV/AIDS resulting in other diseases
1179	AIDS with antiretroviral treatment	300	HIV/AIDS resulting in other diseases
1180	AIDS without antiretroviral treatment	300	HIV/AIDS resulting in other diseases
1181	Diarrheal diseases	302	Diarrheal diseases
1247	Typhoid fever	319	Typhoid fever
1252	Paratyphoid fever	320	Paratyphoid fever
1258	Lower respiratory infections	322	Lower respiratory infections
1276	Upper respiratory infections	328	Upper respiratory infections
1281	Acute otitis media	329	Otitis media
1282	Chronic otitis media	329	Otitis media
1298	Pneumococcal meningitis incidence proportion	333	Pneumococcal meningitis
1305	Moderate to severe impairment due to pneumococcal meningitis	333	Pneumococcal meningitis
1311	Epilepsy due to pneumococcal meningitis	333	Pneumococcal meningitis
1328	H influenza type B meningitis incidence proportion	334	H influenzae type B meningitis
1335	Moderate to severe impairment due to H influenzae type B meningitis	334	H influenzae type B meningitis
1341	Epilepsy due to H influenzae type B meningitis	334	H influenzae type B meningitis
1358	Meningococcal meningitis incidence proportion	335	Meningococcal meningitis

Model ID	Model Name	Cause, Risk, or Impairment ID	Cause, Risk, or Impairment Name
1365	Moderate to severe impairment due to meningococcal meningitis	335	Meningococcal meningitis
1371	Epilepsy due to meningococcal meningitis	335	Meningococcal meningitis
1388	Other meningitis incidence proportion	336	Other meningitis
1395	Moderate to severe impairment due to other meningitis	336	Other meningitis
1401	Epilepsy due to other meningitis	336	Other meningitis
1419	Acute encephalitis	337	Encephalitis
1421	Diphtheria	338	Diphtheria
1424	Whooping cough	339	Whooping cough
1425	Tetanus	340	Tetanus
1427	Mild impairment due to neonatal tetanus	340	Tetanus
1428	Moderate to severe impairment due to neonatal tetanus	340	Tetanus
1436	Measles	341	Measles
1439	Varicella	342	Varicella and herpes zoster
1441	Herpes zoster	342	Varicella and herpes zoster
1446	Moderate to severe impairment due to malaria, all countries	345	Malaria
1450	Chagas seroprevalence among at-risk population	346	Chagas disease
1458	Visceral leishmaniasis	348	Visceral leishmaniasis
1461	Cutaneous and mucocutaneous leishmaniasis	349	Cutaneous and mucocutaneous leishmaniasis
1462	African trypanosomiasis	350	African trypanosomiasis
1465	Schistosomiasis stage 1	351	Schistosomiasis
1466	Schistosomiasis stage 2	351	Schistosomiasis
1467	Schistosomiasis stage 3	351	Schistosomiasis
1479	Prevalence of neuro cysticercosis among epileptics at risk	352	Cysticercosis
1484	Symptomatic cystic echinococcosis	353	Cystic echinococcosis
1491	Prevalence of detectable microfilaria due to lymphatic filariasis	354	Lymphatic filariasis

Model ID	Model Name	Cause, Risk, or Impairment ID	Cause, Risk, or Impairment Name
1494	Onchocerciasis	355	Onchocerciasis
1505	Dengue	357	Dengue
1509	Yellow fever	358	Yellow fever
1512	Rabies	359	Rabies
1525	Clonorchiasis due to food-borne trematodiasis all countries	364	Food-borne trematodiasis
1526	Fascioliasis due to food-borne trematodiasis all countries	364	Food-borne trematodiasis
1527	Intestinal fluke infection due to food-borne trematodiasis all countries	364	Food-borne trematodiasis
1528	Opisthorchiasis due to food-borne trematodiasis all countries	364	Food-borne trematodiasis
1529	Paragonimiasis due to food-borne trematodiasis all countries	364	Food-borne trematodiasis
1535	Maternal hemorrhage	367	Maternal hemorrhage
1543	Hypertensive disorders of pregnancy	369	Maternal hypertensive disorders
1544	Eclampsia	369	Maternal hypertensive disorders
1546	Long term sequelae of severe pre-eclampsia	369	Maternal hypertensive disorders
1550	Obstructed labor, acute event	370	Maternal obstructed labor and uterine rupture
1552	Fistula	370	Maternal obstructed labor and uterine rupture
1555	Maternal abortive outcome	371	Maternal abortion, miscarriage, and ectopic pregnancy
1557	Prevalence of neonatal preterm birth <28 wks	381	Neonatal preterm birth complications
1558	Prevalence of neonatal preterm birth 28-<32 wks	381	Neonatal preterm birth complications
1559	Prevalence of neonatal preterm birth 32-<37 wks	381	Neonatal preterm birth complications
1584	Proportion moderate to severe impairment due to neonatal encephalopathy due to birth asphyxia and trauma	382	Neonatal encephalopathy due to birth asphyxia and trauma

Model ID	Model Name	Cause, Risk, or Impairment ID	Cause, Risk, or Impairment Name
1594	Prevalence of neonatal sepsis and other neonatal infections	383	Neonatal sepsis and other neonatal infections
1609	Visible goiter due to iodine deficiency (total)	388	Iodine deficiency
1617	Vision loss due to vitamin A deficiency unsqueezed	389	Vitamin A deficiency
1628	Adult tertiary syphilis	394	Syphilis
1629	Chlamydial infection	395	Chlamydial infection
1635	Gonococcal infection	396	Gonococcal infection
1641	Trichomoniasis infection	397	Trichomoniasis
1642	Genital herpes	398	Genital herpes
1647	Seroprevalence of anti-HAV	401	Acute hepatitis A
1651	Seroprevalence of HBsAg	402	Hepatitis B
1655	Seroprevalence of anti-HCV	403	Hepatitis C
1659	Seroprevalence of anti-HEV	404	Acute hepatitis E
1702	Laryngectomy due to larynx cancer	423	Larynx cancer
1711	Mastectomy due to breast cancer	429	Breast cancer
1724	Impotence and incontinence due to prostate cancer	438	Prostate cancer
1731	Stoma due to colon and rectum cancer	441	Colon and rectum cancer
1760	Basal cell carcinoma	850	Non-melanoma skin cancer (basal-cell carcinoma)
1777	Urinary incontinence due to bladder cancer	474	Bladder cancer
1814	Myocardial infarction due to ischemic heart disease	493	Ischemic heart disease
1817	Angina due to ischemic heart disease	493	Ischemic heart disease
1832	Chronic ischemic stroke	495	Ischemic stroke
1844	Chronic hemorrhagic stroke	496	Hemorrhagic stroke
1855	Acute myocarditis	942	Myocarditis
1859	Atrial fibrillation and flutter	500	Atrial fibrillation and flutter
1861	Proportion of peripheral arterial disease with intermittent claudication	502	Peripheral artery disease
1862	Endocarditis	503	Endocarditis
1872	Chronic obstructive pulmonary disease	509	Chronic obstructive pulmonary disease
1879	Silicosis	511	Silicosis
1886	Asbestosis all countries	512	Asbestosis
1893	Coal workers pneumoconiosis all countries	513	Coal workers pneumoconiosis

Model ID	Model Name	Cause, Risk, or Impairment ID	Cause, Risk, or Impairment Name
1900	Other pneumoconiosis	514	Other pneumoconiosis
1907	Asthma cases	515	Asthma
1911	Interstitial lung disease and pulmonary sarcoidosis	516	Interstitial lung disease and pulmonary sarcoidosis
1920	Cirrhosis and other chronic liver diseases due to hepatitis B proportion	522	Cirrhosis and other chronic liver diseases due to hepatitis B
1921	Cirrhosis and other chronic liver diseases due to hepatitis C proportion	523	Cirrhosis and other chronic liver diseases due to hepatitis C
1922	Cirrhosis and other chronic liver diseases due to alcohol proportion	524	Cirrhosis and other chronic liver diseases due to alcohol use
1923	Cirrhosis and other chronic liver diseases due to other cause proportion	525	Cirrhosis and other chronic liver diseases due to other causes
1924	Peptic ulcer disease, symptomatic episodes	527	Peptic ulcer disease
1932	Appendicitis	529	Appendicitis
1933	Paralytic ileus and intestinal obstruction	530	Paralytic ileus and intestinal obstruction
1935	Noninfective inflammatory bowel disease due to ulcerative colitis cases pre-adjustment	532	Inflammatory bowel disease
1937	Noninfective inflammatory bowel disease due to Crohn disease cases pre-adjustment	532	Inflammatory bowel disease
1939	Vascular intestinal disorders	533	Vascular intestinal disorders
1941	Pancreatitis, chronic	535	Pancreatitis
1943	Alzheimer disease and other dementias	543	Alzheimer disease and other dementias
1947	Parkinson disease	544	Parkinson disease
1955	Multiple sclerosis	546	Multiple sclerosis
1959	Migraine cases	547	Migraine
1960	Tension-type headache cases	548	Tension-type headache
1961	Probable medication overuse headache cases	547	Migraine
1964	Schizophrenia	559	Schizophrenia
1967	Alcohol dependence cases	560	Alcohol use disorders
1971	Fetal alcohol syndrome cases	560	Alcohol use disorders
1976	Opioid use disorders cases	562	Opioid use disorders
1976	Opioid use disorders cases	562	Opioid use disorders
1977	Cocaine use disorders cases	563	Cocaine use disorders
1977	Cocaine use disorders cases	563	Cocaine use disorders

Model ID	Model Name	Cause, Risk, or Impairment ID	Cause, Risk, or Impairment Name
1978	Amphetamine use disorders cases	564	Amphetamine use disorders
1978	Amphetamine use disorders cases	564	Amphetamine use disorders
1979	Cannabis use disorders cases	565	Cannabis use disorders
1981	Major depressive disorder	568	Major depressive disorder
1985	Dysthymia cases	569	Dysthymia
1986	Bipolar disorder	570	Bipolar disorder
1989	Anxiety disorders cases	571	Anxiety disorders
1993	Anorexia nervosa	573	Anorexia nervosa
1994	Bulimia nervosa	574	Bulimia nervosa
1995	Autism	576	Autism
1996	Asperger syndrome and other autistic spectrum disorders	577	Asperger syndrome and other autistic spectrum disorders
1997	Attention-deficit/hyperactivity disorder cases	578	Attention-deficit/hyperactivity disorder
1998	Conduct disorder cases	579	Conduct disorder
2005	Diabetes mellitus	587	Diabetes mellitus
2007	Diabetic foot proportion	587	Diabetes mellitus
2008	Diabetic neuropathy proportion	587	Diabetes mellitus
2010	Amputation due to diabetes mellitus proportion	587	Diabetes mellitus
2017	Acute glomerulonephritis	588	Acute glomerulonephritis
2055	Interstitial nephritis and urinary tract infections	595	Interstitial nephritis and urinary tract infections
2058	Acute urolithiasis	596	Urolithiasis
2060	Benign prostatic hyperplasia	597	Benign prostatic hyperplasia
2064	Uterine fibroids	604	Uterine fibroids
2068	Polycystic ovarian syndrome	605	Polycystic ovarian syndrome
2073	Endometriosis cases	607	Endometriosis
2078	Genital prolapse	608	Genital prolapse
2079	Premenstrual syndrome	609	Premenstrual syndrome
2080	Premenstrual syndrome pregnancy adjustment	609	Premenstrual syndrome
2085	Beta-thalassemia major parent	614	Thalassemias
2087	Hemoglobin E/beta-thalassemia parent	614	Thalassemias
2089	Hemoglobin H disease parent	614	Thalassemias
2097	Homozygous sickle cell and severe sickle cell/beta-thalassemia parent	615	Sickle cell disorders

Model ID	Model Name	Cause, Risk, or Impairment ID	Cause, Risk, or Impairment Name
2100	Hemoglobin SC disease parent	615	Sickle cell disorders
2103	Mild sickle cell/beta-thalassemia parent	615	Sickle cell disorders
2112	G6PD deficiency	616	G6PD deficiency
2125	Endocrine, metabolic, blood, and immune disorders	619	Endocrine, metabolic, blood, and immune disorders
2137	Rheumatoid arthritis	627	Rheumatoid arthritis
2141	Osteoarthritis of the hip	628	Osteoarthritis
2145	Osteoarthritis of the knee	628	Osteoarthritis
2149	Low back pain	630	Low back pain
2154	Neck pain	631	Neck pain
2159	Gout cases	632	Gout
2161	Other musculoskeletal disorders including injuries	639	Other musculoskeletal disorders
2182	Orofacial clefts birth prevalence	644	Orofacial clefts
2192	Down syndrome birth prevalence	645	Down syndrome
2206	Turner syndrome birth prevalence	646	Turner syndrome
2212	Klinefelter syndrome birth prevalence	647	Klinefelter syndrome
2219	Other chromosomal abnormalities birth prevalence	648	Other chromosomal abnormalities
2247	Atopic dermatitis	654	Dermatitis
2251	Psoriasis	655	Psoriasis
2255	Cellulitis	656	Cellulitis
2258	Impetigo	657	Pyoderma
2261	Abscess and other bacterial skin diseases	657	Pyoderma
2262	Scabies	658	Scabies
2265	Tinea capitis	659	Fungal skin diseases
2269	Viral warts	660	Viral skin diseases
2274	Molluscum contagiosum	660	Viral skin diseases
2275	Acne vulgaris	661	Acne vulgaris
2276	Alopecia areata	662	Alopecia areata
2280	Pruritus	663	Pruritus
2283	Urticaria	664	Urticaria
2286	Decubitus ulcer	665	Decubitus ulcer
2290	Other skin and subcutaneous diseases	668	Other skin and subcutaneous diseases

Model ID	Model Name	Cause, Risk, or Impairment ID	Cause, Risk, or Impairment Name
2291	Vision impairment due to glaucoma unsqueezed	670	Glaucoma
2294	Blindness due to glaucoma unsqueezed	670	Glaucoma
2296	Vision impairment due to cataract unsqueezed	671	Cataract
2299	Blindness due to cataract unsqueezed	671	Cataract
2301	Vision impairment due to macular degeneration unsqueezed	672	Macular degeneration
2304	Blindness due to macular degeneration unsqueezed	672	Macular degeneration
2311	Age-related and other hearing loss unsqueezed	674	Age-related and other hearing loss
2324	Near vision impairment due to presbyopia due to uncorrected refractive error	673	Refraction and accommodation disorders
2325	Vision impairment due to other vision loss unsqueezed	675	Other vision loss
2328	Blindness due to other vision loss unsqueezed	675	Other vision loss
2334	Deciduous caries	681	Caries of deciduous teeth
2335	Permanent caries prior to edentulism correction	682	Caries of permanent teeth
2336	Chronic periodontal disease prior to edentulism correction	683	Periodontal diseases
2337	Edentulism	684	Edentulism and severe tooth loss
2340	Other transport injuries	695	Other transport injuries
2341	Falls	697	Falls
2342	Drowning	698	Drowning
2343	Fire, heat, and hot substances	699	Fire, heat, and hot substances
2344	Poisonings	700	Poisonings
2346	Adverse effects of medical treatment	708	Adverse effects of medical treatment
2348	Pulmonary aspiration and foreign body in airway	713	Pulmonary aspiration and foreign body in airway
2349	Other unintentional injuries	716	Other unintentional injuries
2403	Epilepsy impairment envelope	193	Epilepsy
2404	Guillain-Barré syndrome impairment envelope	194	Guillain-Barré syndrome

Model ID	Model Name	Cause, Risk, or Impairment ID	Cause, Risk, or Impairment Name
2406	Hearing loss impairment at 35+ dB	195	Hearing loss
2410	Hearing loss impairment at 95+ dB	195	Hearing loss
2411	Hearing aids (proportion of total hearing loss)	195	Hearing loss
2412	Heart failure impairment envelope	196	Heart failure
2413	Heart failure due to Chagas disease impairment envelope	196	Heart failure
2414	Heart failure due to ischemic heart disease impairment envelope	196	Heart failure
2415	Heart failure due to hypertensive heart disease impairment envelope	196	Heart failure
2416	Heart failure due to cardiopulmonary disease impairment envelope	196	Heart failure
2417	Heart failure due to valvular heart disease impairment envelope	196	Heart failure
2418	Heart failure due to cardiomyopathy impairment envelope	196	Heart failure
2419	Heart failure due to other causes impairment envelope	196	Heart failure
2420	Intellectual disability impairment envelope	197	Developmental intellectual disability
2421	Primary infertility impairment envelope	198	Infertility
2422	Secondary infertility impairment envelope	198	Infertility
2423	Pelvic inflammatory disease impairment envelope	199	Pelvic inflammatory disease
2424	Presbyopia impairment envelope	200	Vision loss
2425	Vision impairment envelope	200	Vision loss
2426	Blindness impairment envelope	200	Vision loss
2427	Diet low in calcium (g/day)	147	Diet low in calcium
2428	Diet low in fiber (g/day)	119	Diet low in fiber
2429	Diet low in seafood omega-3 fatty acids (g/day)	121	Diet low in seafood omega-3 fatty acids
2430	Diet low in fruits (g/day)	111	Diet low in fruits

Model ID	Model Name	Cause, Risk, or Impairment ID	Cause, Risk, or Impairment Name
2431	Diet low in whole grains (g/day)	113	Diet low in whole grains
2432	Diet low in legumes (g/day)	333	Diet low in legumes
2433	Diet low in milk (g/day)	115	Diet low in milk
2434	Diet low in nuts and seeds (g/day)	114	Diet low in nuts and seeds
2435	Diet high in processed meat (g/day)	117	Diet high in processed meat
2436	Diet low in polyunsaturated fatty acids (% energy/day)	122	Diet low in polyunsaturated fatty acids
2437	Diet high in red meat (g/day)	116	Diet high in red meat
2438	Diet high in sodium (g/day)	124	Diet high in sodium
2439	Diet high in saturated fatty acids (% energy/day)	122	Diet low in polyunsaturated fatty acids
2441	Diet high in trans fatty acids (% energy/day)	123	Diet high in trans fatty acids
2442	Diet low in vegetables (g/day)	112	Diet low in vegetables
2443	Low bone mineral density mean	109	Low bone mineral density
2452	Intimate partner violence	167	Intimate partner violence (exposure approach)
2453	Fraction of homicide against females due to IPV	168	Intimate partner violence (direct PAF approach)
2470	Liver cancer due to hepatitis B proportion	418	Liver cancer due to hepatitis B
2471	Liver cancer due to hepatitis C proportion	419	Liver cancer due to hepatitis C
2472	Liver cancer due to alcohol use proportion	420	Liver cancer due to alcohol use
2473	Liver cancer due to other cause proportion	421	Liver cancer due to other causes
2510	Vitamin A deficiency	96	Vitamin A deficiency
2511	Household air pollution from solid fuels	87	Household air pollution from solid fuels
2513	Cutaneous squamous cell carcinoma	849	Non-melanoma skin cancer (squamous-cell carcinoma)
2520	Pelvic inflammatory diseases due to chlamydial infection proportion	395	Chlamydial infection
2521	Pelvic inflammatory diseases due to gonococcal infection proportion	396	Gonococcal infection

Model ID	Model Name	Cause, Risk, or Impairment ID	Cause, Risk, or Impairment Name
2522	Pelvic inflammatory diseases due to other sexually transmitted diseases proportion	399	Other sexually transmitted diseases
2525	Prevalence of neonatal encephalopathy due to birth asphyxia and trauma	382	Neonatal encephalopathy due to birth asphyxia and trauma
2526	Maternal hemorrhage mortality proportion	367	Maternal hemorrhage
2527	Maternal sepsis and other maternal infections mortality proportion	368	Maternal sepsis and other maternal infections
2528	Maternal hypertensive disorders mortality proportion	369	Maternal hypertensive disorders
2529	Maternal obstructed labor mortality proportion	370	Maternal obstructed labor and uterine rupture
2530	Maternal abortive outcome mortality proportion	371	Maternal abortion, miscarriage, and ectopic pregnancy
2531	Other maternal disorders mortality proportion	379	Other maternal disorders
2532	Peripheral arterial disease	502	Peripheral artery disease
2535	Residential radon (Bq/m ³)	90	Residential radon
2540	Child underweight exposure, <-3 sd	94	Child underweight
2541	Child underweight exposure, -3 to -2 sd	94	Child underweight
2542	Child underweight exposure, -2 to -1 sd	94	Child underweight
2544	Zinc deficiency	97	Zinc deficiency
2546	Cholesterol level	106	High total cholesterol
2547	Systolic blood pressure level	107	High systolic blood pressure
2548	Body mass index level	108	High body-mass index
2566	Moderate vision impairment envelope	200	Vision loss
2567	Severe vision impairment envelope	200	Vision loss
2570	MI to IHD ratio	493	Ischemic heart disease
2574	Contact dermatitis	654	Dermatitis
2578	Seborrhoeic dermatitis	654	Dermatitis
2585	Pedestrian road injuries by road vehicle	690	Pedestrian road injuries
2586	Cyclist road injuries	691	Cyclist road injuries
2587	Motorcyclist road injuries	692	Motorcyclist road injuries

Model ID	Model Name	Cause, Risk, or Impairment ID	Cause, Risk, or Impairment Name
2588	Motor vehicle road injuries	693	Motor vehicle road injuries
2589	Other road injuries	694	Other road injuries
2590	Unintentional firearm injuries	705	Unintentional firearm injuries
2591	Unintentional suffocation	706	Unintentional suffocation
2592	Other exposure to mechanical forces	707	Other exposure to mechanical forces
2593	Venomous animal contact	710	Venomous animal contact
2594	Non-venomous animal contact	711	Non-venomous animal contact
2595	Foreign body in eyes	714	Foreign body in eyes
2596	Foreign body in other body part	715	Foreign body in other body part
2597	Assault by firearm	725	Physical violence by firearm
2598	Assault by sharp object	726	Physical violence by sharp object
2599	Assault by other means	727	Physical violence by other means
2606	Indirect maternal deaths mortality proportion	375	Indirect maternal deaths
2616	Other fungal skin diseases	659	Fungal skin diseases
2624	Infertility due to puerperal sepsis	368	Maternal sepsis and other maternal infections
2627	Long term sequelae of eclampsia	369	Maternal hypertensive disorders
2629	Hearing loss impairment at 20-34 dB	195	Hearing loss
2630	Hearing loss impairment at 35-49 dB	195	Hearing loss
2631	Hearing loss impairment at 50-64 dB	195	Hearing loss
2632	Hearing loss impairment at 65-79 dB	195	Hearing loss
2633	Hearing loss impairment at 80-94 dB	195	Hearing loss
2636	Proportion HIV due to commercial sex work	201	Intimate partner violence (HIV PAF approach)
2637	Proportion HIV due to intravenous drug use	170	Unsafe sex
2638	Proportion HIV due to sex	170	Unsafe sex
2639	Proportion HIV due to other	170	Unsafe sex
2787	Intravenous drug use	138	Drug use dependence and blood borne viruses
2788	Hearing loss impairment at 0-19 dB	195	Hearing loss

Model ID	Model Name	Cause, Risk, or Impairment ID	Cause, Risk, or Impairment Name
2790	Vision impairment due to diabetes mellitus	587	Diabetes mellitus
2793	Blindness due to diabetes mellitus unsqueezed	587	Diabetes mellitus
2794	Primary infertility exposure	198	Infertility
2795	Secondary infertility exposure	198	Infertility
2815	Moderate to severe impairment due to encephalitis	337	Encephalitis
2821	Epilepsy due to encephalitis	337	Encephalitis
2823	Proportion male primary infertility	198	Infertility
2824	Proportion female primary infertility	198	Infertility
2825	Proportion male secondary infertility	198	Infertility
2826	Proportion female secondary infertility	198	Infertility
2833	Tetanus case fatality rate	340	Tetanus
2834	Diphtheria case fatality rate	338	Diphtheria
2913	Other gynecological cases that are not menstrual disorders	612	Other gynecological diseases
3022	Infertility due to chlamydia	395	Chlamydial infection
3023	Infertility due to gonorrhea	396	Gonococcal infection
3024	Infertility due to other sexually transmitted diseases	399	Other sexually transmitted diseases
3025	Primary epilepsy impairment envelope	193	Epilepsy
3026	Secondary epilepsy impairment envelope	193	Epilepsy
3053	Male childhood sexual abuse	245	Childhood sexual abuse against males
3054	Female childhood sexual abuse	244	Childhood sexual abuse against females
3055	Malaria	345	Malaria
3062	GOLD I chronic obstructive pulmonary disease proportion	509	Chronic obstructive pulmonary disease
3063	GOLD II chronic obstructive pulmonary disease proportion	509	Chronic obstructive pulmonary disease

Model ID	Model Name	Cause, Risk, or Impairment ID	Cause, Risk, or Impairment Name
3064	GOLD III+IV chronic obstructive pulmonary disease proportion	509	Chronic obstructive pulmonary disease
3074	Medication overuse headache cases	547	Migraine
3075	Rheumatic heart disease, endemic	492	Rheumatic heart disease
3076	Rheumatic heart disease, non-endemic	492	Rheumatic heart disease
3085	Puerperal sepsis	368	Maternal sepsis and other maternal infections
3086	Other maternal infections	368	Maternal sepsis and other maternal infections
3127	Proportion of breast cancer population with mastectomy	429	Breast cancer
3128	Proportion of colorectal cancer population with stoma	441	Colon and rectum cancer
3129	Proportion of larynx cancer population with laryngectomy	423	Larynx cancer
3130	Proportion of prostate cancer population with prostatectomy	438	Prostate cancer
3131	Proportion of bladder cancer population with cystectomy	474	Bladder cancer
3240	Moderate motor impairment due to moderate neural tube defects	642	Neural tube defects
3241	Severe neural tube defects	642	Neural tube defects
3242	Less severe congenital heart anomalies	643	Congenital heart anomalies
3243	Severe congenital heart anomalies	643	Congenital heart anomalies
3244	Critical congenital heart anomalies	643	Congenital heart anomalies
3245	Orofacial clefts	644	Orofacial clefts
3246	Down syndrome	645	Down syndrome
3247	Turner syndrome	646	Turner syndrome
3248	Klinefelter syndrome	647	Klinefelter syndrome
3249	other chromosomal abnormalities	648	Other chromosomal abnormalities
3254	Other oral disorders	685	Other oral disorders
3265	PfPR age pattern, before level adjustment	345	Malaria

Model ID	Model Name	Cause, Risk, or Impairment ID	Cause, Risk, or Impairment Name
3339	Primary male infertility impairment envelope	198	Infertility
3340	Primary female infertility impairment envelope	198	Infertility
3341	Secondary male infertility impairment envelope	198	Infertility
3342	Secondary female infertility impairment envelope	198	Infertility
3940	Motor neuron disease	554	Motor neuron disease
3948	Early syphilis infection	394	Syphilis
3952	First ever acute ischemic stroke	495	Ischemic stroke
3953	First ever acute hemorrhagic stroke	496	Hemorrhagic stroke
3962	Neonatal hemolytic disease and other neonatal jaundice	384	Hemolytic disease and other neonatal jaundice
7684	Exposure to forces of nature, non-disaster	842	Environmental heat and cold exposure
8621	Moderate to severe impairment due to neonatal preterm birth <28 wks	381	Neonatal preterm birth complications
8622	Moderate to severe impairment due to neonatal preterm birth 28-<32 wks	381	Neonatal preterm birth complications
8623	Moderate to severe impairment due to neonatal preterm births 32-<37 wks	381	Neonatal preterm birth complications
8653	Moderate to severe impairment due to neonatal encephalopathy due to birth asphyxia and trauma	382	Neonatal encephalopathy due to birth asphyxia and trauma
8674	Moderate to severe impairment due to neonatal sepsis and other neonatal infections	383	Neonatal sepsis and other neonatal infections
8675	Neonatal preterm birth <37wks	381	Neonatal preterm birth complications
8687	Birth prevalence of low birth weight, <= 1500g	381	Neonatal preterm birth complications
8690	Porportion moderate to severe impairment due to low birth weight, <= 1500g	381	Neonatal preterm birth complications
8691	Birth prevalence of low birth weight, <= 2500g	381	Neonatal preterm birth complications

Model ID	Model Name	Cause, Risk, or Impairment ID	Cause, Risk, or Impairment Name
8869	Unsafe water exposure, Unimproved & chlorinated	83	Unsafe water source
8870	Unsafe water exposure, Unimproved & filtered	83	Unsafe water source
8871	Unsafe water exposure, Improved & untreated	83	Unsafe water source
8872	Unsafe water exposure, Improved & chlorinated	83	Unsafe water source
8873	Unsafe water exposure, Improved & filtered	83	Unsafe water source
8874	Unsafe water exposure, Piped & untreated	83	Unsafe water source
8875	Unsafe water exposure, Piped & chlorinated	83	Unsafe water source
8877	Unsafe water exposure, High quality piped & untreated	83	Unsafe water source
8878	Unsafe water exposure, High quality piped & chlorinated	83	Unsafe water source
8879	Unsafe sanitation exposure, Improved	84	Unsafe sanitation
8882	Iron deficiency exposure	95	Iron deficiency
8883	Occupational asthmagens exposure, Admin	128	Occupational asthmagens
8884	Occupational asthmagens exposure, Technical	128	Occupational asthmagens
8885	Occupational asthmagens exposure, Sales	128	Occupational asthmagens
8886	Occupational asthmagens exposure, Agriculture	128	Occupational asthmagens
8887	Occupational asthmagens exposure, Mining	128	Occupational asthmagens
8888	Occupational asthmagens exposure, Transport	128	Occupational asthmagens
8889	Occupational asthmagens exposure, Manufact	128	Occupational asthmagens
8890	Occupational asthmagens exposure, Services	128	Occupational asthmagens
8892	Occupational particulate matter, gases, and fumes exposure, High	129	Occupational particulate matter, gases, and fumes
8893	Occupational particulate matter, gases, and fumes exposure, Low	129	Occupational particulate matter, gases, and fumes
8894	Occupational noise exposure, High exposure (>90dB)	130	Occupational noise

Model ID	Model Name	Cause, Risk, or Impairment ID	Cause, Risk, or Impairment Name
8895	Occupational noise exposure, Low exposure (85-90dB)	130	Occupational noise
8897	Occupational ergonomic factors exposure, Professional, technical and related workers	132	Occupational ergonomic factors
8898	Occupational ergonomic factors exposure, Administrative and managerial workers	132	Occupational ergonomic factors
8899	Occupational ergonomic factors exposure, Clerical and related workers	132	Occupational ergonomic factors
8900	Occupational ergonomic factors exposure, Sales workers	132	Occupational ergonomic factors
8901	Occupational ergonomic factors exposure, Service workers	132	Occupational ergonomic factors
8902	Occupational ergonomic factors exposure, Agriculture, animal husbandry and forestry workers, fishermen and hunters	132	Occupational ergonomic factors
8903	Occupational ergonomic factors exposure, Production and related workers, transport equipment operators and labourers	132	Occupational ergonomic factors
8904	Non-exclusive breastfeeding exposure, partial	136	Non-exclusive breastfeeding
8905	Non-exclusive breastfeeding exposure, predominant	136	Non-exclusive breastfeeding
8907	Discontinued breastfeeding exposure	137	Discontinued breastfeeding
8909	High fasting plasma glucose (continuous) exposure	141	High fasting plasma glucose (continuous)
8916	Occupational exposure to arsenic exposure, High exposure	151	Occupational exposure to arsenic
8917	Occupational exposure to arsenic exposure, Low exposure	151	Occupational exposure to arsenic

Model ID	Model Name	Cause, Risk, or Impairment ID	Cause, Risk, or Impairment Name
8918	Occupational exposure to benzene exposure, High exposure	152	Occupational exposure to benzene
8919	Occupational exposure to benzene exposure, Low exposure	152	Occupational exposure to benzene
8920	Occupational exposure to beryllium exposure, High exposure	153	Occupational exposure to beryllium
8921	Occupational exposure to beryllium exposure, Low exposure	153	Occupational exposure to beryllium
8922	Occupational exposure to cadmium exposure, High exposure	154	Occupational exposure to cadmium
8923	Occupational exposure to cadmium exposure, Low exposure	154	Occupational exposure to cadmium
8924	Occupational exposure to chromium exposure, High exposure	155	Occupational exposure to chromium
8925	Occupational exposure to chromium exposure, Low exposure	155	Occupational exposure to chromium
8926	Occupational exposure to diesel engine exhaust exposure, High exposure	156	Occupational exposure to diesel engine exhaust
8927	Occupational exposure to diesel engine exhaust exposure, Low exposure	156	Occupational exposure to diesel engine exhaust
8928	Occupational exposure to secondhand smoke exposure, High exposure	157	Occupational exposure to secondhand smoke
8929	Occupational exposure to secondhand smoke exposure, Low exposure	157	Occupational exposure to secondhand smoke
8930	Occupational exposure to formaldehyde exposure, High exposure	158	Occupational exposure to formaldehyde
8931	Occupational exposure to formaldehyde exposure, Low exposure	158	Occupational exposure to formaldehyde
8932	Occupational exposure to nickel exposure, High exposure	159	Occupational exposure to nickel

Model ID	Model Name	Cause, Risk, or Impairment ID	Cause, Risk, or Impairment Name
8933	Occupational exposure to nickel exposure, Low exposure	159	Occupational exposure to nickel
8934	Occupational exposure to polycyclic aromatic hydrocarbons exposure, High exposure	160	Occupational exposure to polycyclic aromatic hydrocarbons
8935	Occupational exposure to polycyclic aromatic hydrocarbons exposure, Low exposure	160	Occupational exposure to polycyclic aromatic hydrocarbons
8936	Occupational exposure to silica exposure, High exposure	161	Occupational exposure to silica
8937	Occupational exposure to silica exposure, Low exposure	161	Occupational exposure to silica
8938	Occupational exposure to sulfuric acid exposure, High exposure	162	Occupational exposure to sulfuric acid
8939	Occupational exposure to sulfuric acid exposure, Low exposure	162	Occupational exposure to sulfuric acid
8941	Smoking Prevalence	166	Smoking (prevalence approach)
8942	Occupational exposure to trichloroethylene exposure, High exposure	237	Occupational exposure to trichloroethylene
8943	Occupational exposure to trichloroethylene exposure, Low exposure	237	Occupational exposure to trichloroethylene
8944	No access to handwashing facility exposure	238	No access to handwashing facility
8945	Child wasting exposure, <-3 sd	240	Child wasting
8946	Child wasting exposure, -3 to -2 sd	240	Child wasting
8947	Child wasting exposure, -2 to -1 sd	240	Child wasting
8949	Child stunting exposure, <-3 sd	241	Child stunting
8950	Child stunting exposure, -3 to -2 sd	241	Child stunting
8951	Child stunting exposure, -2 to -1 sd	241	Child stunting

Model ID	Model Name	Cause, Risk, or Impairment ID	Cause, Risk, or Impairment Name
8953	Lead exposure in blood exposure	242	Lead exposure in blood
8954	Lead exposure in bone exposure	243	Lead exposure in bone
9310	First ever acute ischemic stroke with CSMR	495	Ischemic stroke
9311	First ever acute hemorrhagic stroke with CSMR	496	Hemorrhagic stroke
9356	Physical inactivity and low physical activity, inactive	125	Low physical activity
9357	Physical inactivity and low physical activity, low active	125	Low physical activity
9358	Physical inactivity and low physical activity, moderately active	125	Low physical activity
9359	Physical inactivity and low physical activity, highly active	125	Low physical activity
9360	Physical inactivity and low physical activity, low/moderately/highly active	125	Low physical activity
9361	Physical inactivity and low physical activity, moderately/highly active	125	Low physical activity
9366	Atrial Fibrillation with EMR	500	Atrial fibrillation and flutter
9369	Unsafe sanitation exposure, Unimproved & untreated	84	Unsafe sanitation
9415	Unsafe water exposure, Unimproved & untreated	83	Unsafe water source
9423	Borderline intellectual disability impairment envelope	197	Developmental intellectual disability
9424	Mild intellectual disability impairment envelope	197	Developmental intellectual disability
9425	Moderate intellectual disability impairment envelope	197	Developmental intellectual disability
9426	Severe intellectual disability impairment envelope	197	Developmental intellectual disability
9427	Profound intellectual disability impairment envelope	197	Developmental intellectual disability
9428	Proportion of intellectual disability due to cretinism (profound & severe) that is profound	197	Developmental intellectual disability

Model ID	Model Name	Cause, Risk, or Impairment ID	Cause, Risk, or Impairment Name
9459	Inpatient visits	740	None
9460	Any medical contact	740	None
9549	Acute other sense organ diseases	679	Other sense organ diseases
9550	Chronic other sense organ diseases	679	Other sense organ diseases
9598	Non-exclusive breastfeeding exposure, none	136	Non-exclusive breastfeeding
9668	Ebola	843	Ebola
9759	Total peptic ulcer disease, symptomatic and asymptomatic	527	Peptic ulcer disease
9760	Total gallbladder and biliary diseases, symptomatic and asymptomatic	534	Gallbladder and biliary diseases
9761	Total gastritis and duodenitis, symptomatic and asymptomatic	528	Gastritis and duodenitis
9793	Prevalence of ever-had neonatal sepsis and other neonatal infections	383	Neonatal sepsis and other neonatal infections
9794	Total inguinal, femoral, and abdominal hernia	531	Inguinal, femoral, and abdominal hernia
9804	unadjusted sugar-sweetened beverages	118	Diet high in sugar-sweetened beverages
9971	Chronic kidney disease YLD registry proportion due to diabetes mellitus	590	Chronic kidney disease due to diabetes mellitus
9972	Chronic kidney disease YLD registry proportion due to glomerulonephritis	592	Chronic kidney disease due to glomerulonephritis
9973	Chronic kidney disease YLD registry proportion due to hypertension	591	Chronic kidney disease due to hypertension
9974	Chronic kidney disease YLD registry proportion due to other	593	Chronic kidney disease due to other causes
10344	Childhood proportion overweight	108	High body-mass index
10345	Childhood proportion obese	108	High body-mass index
10352	Tuberculosis infection (1980 to present)	297	Tuberculosis
10400	All Zika infections	935	Zika virus
10407	Total musculoskeletal congenital anomalies	649	Congenital musculoskeletal and limb anomalies

Model ID	Model Name	Cause, Risk, or Impairment ID	Cause, Risk, or Impairment Name
10408	Birth prevalence of total musculoskeletal congenital anomalies	649	Congenital musculoskeletal and limb anomalies
10409	Limb reduction deficits	649	Congenital musculoskeletal and limb anomalies
10411	Polydactyly and syndactyly	649	Congenital musculoskeletal and limb anomalies
10415	Total neural tube defects	642	Neural tube defects
10416	Birth prevalence of total neural tube defects	642	Neural tube defects
10417	Anencephaly	642	Neural tube defects
10418	Birth prevalence of anencephaly	642	Neural tube defects
10419	Encephalocele	642	Neural tube defects
10420	Birth prevalence of encephalocele	642	Neural tube defects
10421	Spina bifida	642	Neural tube defects
10422	Birth prevalence of spina bifida	642	Neural tube defects
10423	Congenital urinary anomalies	650	Urogenital congenital anomalies
10424	Birth prevalence of congenital urinary anomalies	650	Urogenital congenital anomalies
10425	Congenital genital anomalies	650	Urogenital congenital anomalies
10426	Birth prevalence of congenital genital anomalies	650	Urogenital congenital anomalies
10427	Total congenital digestive anomalies	651	Digestive congenital anomalies
10428	Birth prevalence of total congenital digestive anomalies	651	Digestive congenital anomalies
10429	Congenital diaphragmatic hernia	651	Digestive congenital anomalies
10431	Congenital malformations of the abdominal wall	651	Digestive congenital anomalies
10433	Congenital atresia and/or stenosis of the digestive tract	651	Digestive congenital anomalies
10437	Total congenital heart defects	643	Congenital heart anomalies
10438	Birth prevalence of total congenital heart defects	643	Congenital heart anomalies
10439	Single ventricle and single ventricle pathway heart defects	643	Congenital heart anomalies

Model ID	Model Name	Cause, Risk, or Impairment ID	Cause, Risk, or Impairment Name
10440	Birth prevalence of single ventricle and single ventricle pathway heart defects	643	Congenital heart anomalies
10441	Critical malformations of great vessels, congenital valvular heart disease and patent ductus arteriosus	643	Congenital heart anomalies
10442	Birth prevalence of critical malformations of great vessels, congenital valvular heart disease and patent ductus arteriosus	643	Congenital heart anomalies
10443	Ventricular septal defect and atrial septal defect	643	Congenital heart anomalies
10444	Birth prevalence of ventricular septal defect and atrial septal defect	643	Congenital heart anomalies
10445	Severe congenital heart defects excluding single ventricle and single ventricle pathway	643	Congenital heart anomalies
10446	Birth prevalence of severe congenital heart defects excluding single ventricle and single ventricle pathway	643	Congenital heart anomalies
10449	Edward Syndrome and Patau Syndrome	648	Other chromosomal abnormalities
10450	Birth prevalence of Edward Syndrome and Patau Syndrome	648	Other chromosomal abnormalities
10471	SDG Indicator: prevalence of intimate partner physical, sexual, or psychological violence within the last 12 months (female only)	941	Sexual violence
10473	SDG Indicator: prevalence of intimate partner sexual violence within the last 12 months (female only)	941	Sexual violence
10474	SDG Indicator: prevalence of intimate partner psychological violence within the last 12 months (female only)	941	Sexual violence

Model ID	Model Name	Cause, Risk, or Impairment ID	Cause, Risk, or Impairment Name
10475	SDG Indicator: prevalence of non-partner sexual violence within the last 12 months (female only)	941	Sexual violence
10484	Ectopic pregnancy incidence ratio	371	Maternal abortion, miscarriage, and ectopic pregnancy
10487	Mean Hemoglobin (g/L, altitude adjusted)	192	Anemia
10488	Standard Deviation of Hemoglobin (g/L, altitude adjusted)	192	Anemia
10489	Mild Anemia Impairment	192	Anemia
10490	Moderate Anemia Impairment	192	Anemia
10491	Severe Anemia Impairment	192	Anemia
10494	Pneumococcal meningitis mortality proportion	333	Pneumococcal meningitis
10495	Meningococcal meningitis mortality proportion	335	Meningococcal meningitis
10496	H influenzae type B meningitis mortality proportion	334	H influenzae type B meningitis
10497	Other meningitis mortality proportion	336	Other meningitis
10501	asthma males	515	Asthma
10502	asthma females	515	Asthma
10504	Severe Pre-eclampsia	369	Maternal hypertensive disorders
10507	Anemia Impairment	192	Anemia
10509	Albuminuria	589	Chronic kidney disease
10523	Guinea Worm	936	Guinea worm disease
10537	Schistosomiasis, unadjusted	351	Schistosomiasis
10538	Maternal hemorrhage mortality rate	367	Maternal hemorrhage
10539	Maternal hypertensive disorders mortality rate	369	Maternal hypertensive disorders
10540	Maternal obstructed labor and uterine rupture mortality rate	370	Maternal obstructed labor and uterine rupture
10541	Maternal sepsis and other maternal infections mortality rate	368	Maternal sepsis and other maternal infections

Model ID	Model Name	Cause, Risk, or Impairment ID	Cause, Risk, or Impairment Name
10542	Abortion, ectopic pregnancy and miscarriage maternal mortality rate	371	Maternal abortion, miscarriage, and ectopic pregnancy
10543	Indirect maternal deaths mortality rate	375	Indirect maternal deaths
10544	Late maternal deaths mortality rate	376	Late maternal deaths
10545	Other maternal deaths mortality rate	379	Other maternal disorders
10553	proportion of edema among severe wasting	387	Protein-energy malnutrition
10554	proportion of edema among total wasting	387	Protein-energy malnutrition
10620	Smokeless tobacco	332	Smokeless tobacco
10699	Ascariasis cases among PAR	361	Ascariasis
10700	Trichuriasis cases among PAR	362	Trichuriasis
10701	Hookworm cases among PAR	363	Hookworm disease
10719	Other mental disorders residual group	585	Other mental and substance use disorders
10720	Other drug use disorders residual group	566	Other drug use disorders
10722	Leprosy, unadjusted	405	Leprosy
10726	Self-harm by firearm	721	Self-harm by firearm
10727	Self-harm by other specified means	723	Self-harm by other specified means
10732	Stage III chronic kidney disease squeezed	589	Chronic kidney disease
10733	Stage IV chronic kidney disease squeezed	589	Chronic kidney disease
10734	Stage V chronic kidney disease squeezed	589	Chronic kidney disease
10755	Birth prevalence - [0, 24) wks, [0, 500) g	339	Low birth weight and short gestation
10757	Birth prevalence - [24, 26) wks, [0, 500) g	339	Low birth weight and short gestation
10758	Birth prevalence - [26, 28) wks, [0, 500) g	339	Low birth weight and short gestation
10760	Birth prevalence - [28, 30) wks, [0, 500) g	339	Low birth weight and short gestation
10761	Birth prevalence - [0, 24) wks, [500, 1000) g	339	Low birth weight and short gestation
10763	Birth prevalence - [24, 26) wks, [500, 1000) g	339	Low birth weight and short gestation
10764	Birth prevalence - [26, 28) wks, [500, 1000) g	339	Low birth weight and short gestation

Model ID	Model Name	Cause, Risk, or Impairment ID	Cause, Risk, or Impairment Name
10765	Birth prevalence - [32, 34) wks, [500, 1000) g	339	Low birth weight and short gestation
10766	Birth prevalence - [0, 24) wks, [1000, 1500) g	339	Low birth weight and short gestation
10767	Birth prevalence - [30, 32) wks, [500, 1000) g	339	Low birth weight and short gestation
10768	Birth prevalence - [28, 30) wks, [500, 1000) g	339	Low birth weight and short gestation
10769	Birth prevalence - [24, 26) wks, [1000, 1500) g	339	Low birth weight and short gestation
10770	Birth prevalence - [26, 28) wks, [1000, 1500) g	339	Low birth weight and short gestation
10771	Birth prevalence - [26, 28) wks, [1500, 2000) g	339	Low birth weight and short gestation
10772	Birth prevalence - [34, 36) wks, [1000, 1500) g	339	Low birth weight and short gestation
10773	Birth prevalence - [28, 30) wks, [1500, 2000) g	339	Low birth weight and short gestation
10774	Birth prevalence - [28, 30) wks, [1000, 1500) g	339	Low birth weight and short gestation
10775	Birth prevalence - [32, 34) wks, [1000, 1500) g	339	Low birth weight and short gestation
10776	Birth prevalence - [30, 32) wks, [1000, 1500) g	339	Low birth weight and short gestation
10777	Birth prevalence - [37, 38) wks, [1500, 2000) g	339	Low birth weight and short gestation
10778	Birth prevalence - [36, 37) wks, [1500, 2000) g	339	Low birth weight and short gestation
10779	Birth prevalence - [30, 32) wks, [2000, 2500) g	339	Low birth weight and short gestation
10780	Birth prevalence - [30, 32) wks, [1500, 2000) g	339	Low birth weight and short gestation
10781	Birth prevalence - [34, 36) wks, [1500, 2000) g	339	Low birth weight and short gestation
10782	Birth prevalence - [32, 34) wks, [1500, 2000) g	339	Low birth weight and short gestation
10783	Birth prevalence - [32, 34) wks, [2000, 2500) g	339	Low birth weight and short gestation
10784	Birth prevalence - [40, 42) wks, [2000, 2500) g	339	Low birth weight and short gestation
10785	Birth prevalence - [38, 40) wks, [2000, 2500) g	339	Low birth weight and short gestation
10786	Birth prevalence - [32, 34) wks, [2500, 3000) g	339	Low birth weight and short gestation

Model ID	Model Name	Cause, Risk, or Impairment ID	Cause, Risk, or Impairment Name
10787	Birth prevalence - [34, 36) wks, [2000, 2500) g	339	Low birth weight and short gestation
10788	Birth prevalence - [37, 38) wks, [2000, 2500) g	339	Low birth weight and short gestation
10789	Birth prevalence - [36, 37) wks, [2000, 2500) g	339	Low birth weight and short gestation
10790	Birth prevalence - [34, 36) wks, [2500, 3000) g	339	Low birth weight and short gestation
10791	Birth prevalence - [34, 36) wks, [4000, 4500) g	339	Low birth weight and short gestation
10792	Birth prevalence - [34, 36) wks, [3000, 3500) g	339	Low birth weight and short gestation
10793	Birth prevalence - [36, 37) wks, [2500, 3000) g	339	Low birth weight and short gestation
10794	Birth prevalence - [34, 36) wks, [3500, 4000) g	339	Low birth weight and short gestation
10795	Birth prevalence - [37, 38) wks, [2500, 3000) g	339	Low birth weight and short gestation
10796	Birth prevalence - [40, 42) wks, [2500, 3000) g	339	Low birth weight and short gestation
10797	Birth prevalence - [38, 40) wks, [2500, 3000) g	339	Low birth weight and short gestation
10798	Birth prevalence - [36, 37) wks, [3000, 3500) g	339	Low birth weight and short gestation
10799	Birth prevalence - [36, 37) wks, [4000, 4500) g	339	Low birth weight and short gestation
10800	Birth prevalence - [36, 37) wks, [3500, 4000) g	339	Low birth weight and short gestation
10801	Birth prevalence - [37, 38) wks, [3000, 3500) g	339	Low birth weight and short gestation
10802	Birth prevalence - [37, 38) wks, [4000, 4500) g	339	Low birth weight and short gestation
10803	Birth prevalence - [37, 38) wks, [3500, 4000) g	339	Low birth weight and short gestation
10804	Birth prevalence - [40, 42) wks, [3000, 3500) g	339	Low birth weight and short gestation
10805	Birth prevalence - [38, 40) wks, [3000, 3500) g	339	Low birth weight and short gestation
10806	Birth prevalence - [38, 40) wks, [4000, 4500) g	339	Low birth weight and short gestation
10807	Birth prevalence - [38, 40) wks, [3500, 4000) g	339	Low birth weight and short gestation
10808	Birth prevalence - [40, 42) wks, [3500, 4000) g	339	Low birth weight and short gestation

Model ID	Model Name	Cause, Risk, or Impairment ID	Cause, Risk, or Impairment Name
10809	Birth prevalence - [40, 42) wks, [4000, 4500) g	339	Low birth weight and short gestation
10817	SDG Indicator: prevalence of physical, sexual, or psychological violence within the last 12 months (both sexes)	941	Sexual violence
10820	SDG Indicator: prevalence of intimate partner physical or sexual violence within the last 12 months (female only)	941	Sexual violence
10821	Male yearly prevalence sexual violence: non-partner	941	Sexual violence
10824	Female yearly prevalence sexual violence: total	941	Sexual violence
10825	Male yearly prevalence sexual violence: total	941	Sexual violence
10836	Chronic hemorrhagic stroke with CSMR	496	Hemorrhagic stroke
10837	Chronic ischemic stroke with CSMR	495	Ischemic stroke
10838	Heart failure due to myocarditis before split	196	Heart failure
10839	Heart failure due to alcoholic cardiomyopathy before split	196	Heart failure
10840	Heart failure due to other cardiomyopathy before split	196	Heart failure
10843	Moderate vision impairment due to uncorrected refractive error unsqueezed	673	Refraction and accommodation disorders
10844	Severe vision impairment due to uncorrected refractive error unsqueezed	673	Refraction and accommodation disorders
10845	Blindness due to uncorrected refractive error unsqueezed	673	Refraction and accommodation disorders
10993	Lymphedema due to lymphatic filariasis, unadjusted	354	Lymphatic filariasis
10994	Hydrocele due to lymphatic filariasis, unadjusted	354	Lymphatic filariasis
11264	alcohol_exposure	102	Alcohol use
11522	Secondhand smoke exposure	100	Secondhand smoke
11649	Guinea worm age model	936	Guinea worm disease
15755	Post-MI IHD	493	Ischemic heart disease

Model ID	Model Name	Cause, Risk, or Impairment ID	Cause, Risk, or Impairment Name
15794	Unsafe water exposure, Piped & filtered	83	Unsafe water source
16349	Iron Deficiency	390	Iron-deficiency anemia
16407	Cutaneous leishmaniasis age pattern	349	Cutaneous and mucocutaneous leishmaniasis
16424	Occupational exposure to asbestos, Any exposure	150	Occupational exposure to asbestos

4.8 Risk

Risk ID	Risk Name
169	All risk factors
202	Environmental/occupational risks
82	Unsafe water, sanitation, and handwashing
83	Unsafe water source
84	Unsafe sanitation
238	No access to handwashing facility
85	Air pollution
86	Ambient particulate matter pollution
87	Household air pollution from solid fuels
88	Ambient ozone pollution
89	Other environmental risks
90	Residential radon
91	Lead exposure
126	Occupational risks
127	Occupational carcinogens
150	Occupational exposure to asbestos
151	Occupational exposure to arsenic
152	Occupational exposure to benzene
153	Occupational exposure to beryllium
154	Occupational exposure to cadmium
155	Occupational exposure to chromium
156	Occupational exposure to diesel engine exhaust
157	Occupational exposure to secondhand smoke
158	Occupational exposure to formaldehyde
159	Occupational exposure to nickel
160	Occupational exposure to polycyclic aromatic hydrocarbons
161	Occupational exposure to silica
162	Occupational exposure to sulfuric acid
237	Occupational exposure to trichloroethylene
128	Occupational asthmagens
129	Occupational particulate matter, gases, and fumes
130	Occupational noise

Risk ID	Risk Name
131	Occupational injuries
132	Occupational ergonomic factors
203	Behavioral risks
92	Child and maternal malnutrition
93	Suboptimal breastfeeding
136	Non-exclusive breastfeeding
137	Discontinued breastfeeding
239	Child growth failure
94	Child underweight
240	Child wasting
241	Child stunting
339	Low birth weight and short gestation
334	Short gestation for birth weight
335	Low birth weight for gestation
95	Iron deficiency
96	Vitamin A deficiency
97	Zinc deficiency
98	Tobacco
99	Smoking
332	Smokeless tobacco
100	Secondhand smoke
101	Alcohol and drug use
102	Alcohol use
103	Drug use
110	Dietary risks
111	Diet low in fruits
112	Diet low in vegetables
333	Diet low in legumes
113	Diet low in whole grains
114	Diet low in nuts and seeds
115	Diet low in milk
116	Diet high in red meat
117	Diet high in processed meat
118	Diet high in sugar-sweetened beverages
119	Diet low in fiber
147	Diet low in calcium
121	Diet low in seafood omega-3 fatty acids
122	Diet low in polyunsaturated fatty acids
123	Diet high in trans fatty acids
124	Diet high in sodium
133	Sexual abuse and violence
134	Childhood sexual abuse
135	Intimate partner violence
170	Unsafe sex
125	Low physical activity

Risk ID	Risk Name
104	Metabolic risks
105	High fasting plasma glucose
106	High total cholesterol
107	High systolic blood pressure
108	High body-mass index
109	Low bone mineral density
341	Impaired kidney function

4.9 Sex

Sex ID	Sex Name
1	Male
2	Female
3	Both sexes

Section 5: Causes by Measure

The following table indicates the measures for which estimates were produced and are available for each cause.

Cause name	Deaths	YLLs	DALYs	YLDs	Prevalence	Incidence
All causes	X	X	X	X	X	X
Communicable, maternal, neonatal, and nutritional diseases	X	X	X	X	X	X
HIV/AIDS and tuberculosis	X	X	X	X	X	X
Tuberculosis	X	X	X	X	X	X
Drug-susceptible tuberculosis	X	X	X	X	X	X
Multidrug-resistant tuberculosis without extensive drug resistance	X	X	X	X	X	X
Extensively drug-resistant tuberculosis	X	X	X	X	X	X
Latent tuberculosis infection			X	X	X	
HIV/AIDS	X	X	X	X	X	X
Drug-susceptible HIV/AIDS - Tuberculosis	X	X	X	X	X	X

Cause name	Deaths	YLLs	DALYs	YLDs	Prevalence	Incidence
Multidrug-resistant HIV/AIDS - Tuberculosis without extensive drug resistance	X	X	X	X	X	X
Extensively drug-resistant HIV/AIDS - Tuberculosis	X	X	X	X	X	X
HIV/AIDS resulting in other diseases	X	X	X	X	X	X
Diarrhea, lower respiratory, and other common infectious diseases	X	X	X	X	X	X
Diarrheal diseases	X	X	X	X	X	X
Intestinal infectious diseases	X	X	X	X	X	X
Typhoid fever	X	X	X	X	X	X
Paratyphoid fever	X	X	X	X	X	X
Other intestinal infectious diseases	X	X	X	X		
Lower respiratory infections	X	X	X	X	X	X
Upper respiratory infections	X	X	X	X	X	X
Otitis media	X	X	X	X	X	X
Meningitis	X	X	X	X	X	X
Pneumococcal meningitis	X	X	X	X	X	X
H influenzae type B meningitis	X	X	X	X	X	X
Meningococcal meningitis	X	X	X	X	X	X
Other meningitis	X	X	X	X	X	X
Encephalitis	X	X	X	X	X	X
Diphtheria	X	X	X	X	X	X
Whooping cough	X	X	X	X	X	X
Tetanus	X	X	X	X	X	X
Measles	X	X	X	X	X	X
Varicella and herpes zoster	X	X	X	X	X	X
Neglected tropical diseases and malaria	X	X	X	X	X	X
Malaria	X	X	X	X	X	X
Chagas disease	X	X	X	X	X	X
Leishmaniasis	X	X	X	X	X	X

Cause name	Deaths	YLLs	DALYs	YLDs	Prevalence	Incidence
Visceral leishmaniasis	X	X	X	X	X	X
Cutaneous and mucocutaneous leishmaniasis			X	X	X	X
African trypanosomiasis	X	X	X	X	X	X
Schistosomiasis	X	X	X	X	X	X
Cysticercosis	X	X	X	X	X	
Cystic echinococcosis	X	X	X	X	X	X
Lymphatic filariasis			X	X	X	X
Onchocerciasis			X	X	X	X
Trachoma			X	X	X	
Dengue	X	X	X	X	X	X
Yellow fever	X	X	X	X	X	X
Rabies	X	X	X	X	X	X
Intestinal nematode infections	X	X	X	X	X	
Ascariasis	X	X	X	X	X	
Trichuriasis			X	X	X	
Hookworm disease			X	X	X	
Food-borne trematodiasis			X	X	X	X
Leprosy			X	X	X	X
Ebola	X	X	X	X	X	X
Zika virus	X	X	X	X	X	X
Guinea worm disease			X	X	X	X
Other neglected tropical diseases	X	X	X	X	X	
Maternal disorders	X	X	X	X	X	X
Maternal hemorrhage	X	X	X	X	X	X
Maternal sepsis and other maternal infections	X	X	X	X	X	X
Maternal hypertensive disorders	X	X	X	X	X	X
Maternal obstructed labor and uterine rupture	X	X	X	X	X	X
Maternal abortion, miscarriage, and ectopic pregnancy	X	X	X	X	X	X

Cause name	Deaths	YLLs	DALYs	YLDs	Prevalence	Incidence
Indirect maternal deaths	X	X	X			
Late maternal deaths	X	X	X			
Maternal deaths aggravated by HIV/AIDS	X	X	X			
Other maternal disorders	X	X	X	X		
Neonatal disorders	X	X	X	X	X	
Neonatal preterm birth complications	X	X	X	X	X	
Neonatal encephalopathy due to birth asphyxia and trauma	X	X	X	X	X	
Neonatal sepsis and other neonatal infections	X	X	X	X	X	
Hemolytic disease and other neonatal jaundice	X	X	X	X	X	
Other neonatal disorders	X	X	X	X		
Nutritional deficiencies	X	X	X	X	X	X
Protein-energy malnutrition	X	X	X	X	X	X
Iodine deficiency	X	X	X	X	X	X
Vitamin A deficiency			X	X	X	X
Iron-deficiency anemia	X	X	X	X	X	
Other nutritional deficiencies	X	X	X	X		
Other communicable, maternal, neonatal, and nutritional diseases	X	X	X	X	X	X
Sexually transmitted diseases excluding HIV	X	X	X	X	X	X
Syphilis	X	X	X	X	X	X
Chlamydial infection	X	X	X	X	X	X
Gonococcal infection	X	X	X	X	X	X

Cause name	Deaths	YLLs	DALYs	YLDs	Prevalence	Incidence
Trichomoniasis			X	X	X	X
Genital herpes			X	X	X	X
Other sexually transmitted diseases	X	X	X	X	X	X
Hepatitis	X	X	X	X	X	X
Acute hepatitis A	X	X	X	X	X	X
Hepatitis B	X	X	X	X	X	X
Hepatitis C	X	X	X	X	X	X
Acute hepatitis E	X	X	X	X	X	X
Other infectious diseases	X	X	X	X	X	X
Non-communicable diseases	X	X	X	X	X	X
Neoplasms	X	X	X	X	X	X
Lip and oral cavity cancer	X	X	X	X	X	X
Nasopharynx cancer	X	X	X	X	X	X
Other pharynx cancer	X	X	X	X	X	X
Esophageal cancer	X	X	X	X	X	X
Stomach cancer	X	X	X	X	X	X
Colon and rectum cancer	X	X	X	X	X	X
Liver cancer	X	X	X	X	X	X
Liver cancer due to hepatitis B	X	X	X	X	X	X
Liver cancer due to hepatitis C	X	X	X	X	X	X
Liver cancer due to alcohol use	X	X	X	X	X	X
Liver cancer due to other causes	X	X	X	X	X	X
Gallbladder and biliary tract cancer	X	X	X	X	X	X
Pancreatic cancer	X	X	X	X	X	X
Larynx cancer	X	X	X	X	X	X
Tracheal, bronchus, and lung cancer	X	X	X	X	X	X
Malignant skin melanoma	X	X	X	X	X	X
Non-melanoma skin cancer	X	X	X	X	X	X
Non-melanoma skin cancer (squamous-cell carcinoma)	X	X	X	X	X	X

Cause name	Deaths	YLLs	DALYs	YLDs	Prevalence	Incidence
Non-melanoma skin cancer (basal-cell carcinoma)			X	X	X	X
Breast cancer	X	X	X	X	X	X
Cervical cancer	X	X	X	X	X	X
Uterine cancer	X	X	X	X	X	X
Ovarian cancer	X	X	X	X	X	X
Prostate cancer	X	X	X	X	X	X
Testicular cancer	X	X	X	X	X	X
Kidney cancer	X	X	X	X	X	X
Bladder cancer	X	X	X	X	X	X
Brain and nervous system cancer	X	X	X	X	X	X
Thyroid cancer	X	X	X	X	X	X
Mesothelioma	X	X	X	X	X	X
Hodgkin lymphoma	X	X	X	X	X	X
Non-Hodgkin lymphoma	X	X	X	X	X	X
Multiple myeloma	X	X	X	X	X	X
Leukemia	X	X	X	X	X	X
Acute lymphoid leukemia	X	X	X	X	X	X
Chronic lymphoid leukemia	X	X	X	X	X	X
Acute myeloid leukemia	X	X	X	X	X	X
Chronic myeloid leukemia	X	X	X	X	X	X
Other leukemia	X	X	X	X	X	X
Other neoplasms	X	X	X	X	X	X
Cardiovascular diseases	X	X	X	X	X	X
Rheumatic heart disease	X	X	X	X	X	X
Ischemic heart disease	X	X	X	X	X	X
Cerebrovascular disease	X	X	X	X	X	X
Ischemic stroke	X	X	X	X	X	X
Hemorrhagic stroke	X	X	X	X	X	X
Hypertensive heart disease	X	X	X	X	X	
Cardiomyopathy and myocarditis	X	X	X	X	X	X
Myocarditis	X	X	X	X	X	X

Cause name	Deaths	YLLs	DALYs	YLDs	Prevalence	Incidence
Alcoholic cardiomyopathy	X	X	X	X	X	
Other cardiomyopathy	X	X	X	X	X	
Atrial fibrillation and flutter	X	X	X	X	X	X
Aortic aneurysm	X	X	X			
Peripheral artery disease	X	X	X	X	X	X
Endocarditis	X	X	X	X	X	X
Other cardiovascular and circulatory diseases	X	X	X	X	X	
Chronic respiratory diseases	X	X	X	X	X	X
Chronic obstructive pulmonary disease	X	X	X	X	X	X
Pneumoconiosis	X	X	X	X	X	X
Silicosis	X	X	X	X	X	X
Asbestosis	X	X	X	X	X	X
Coal workers pneumoconiosis	X	X	X	X	X	X
Other pneumoconiosis	X	X	X	X	X	X
Asthma	X	X	X	X	X	X
Interstitial lung disease and pulmonary sarcoidosis	X	X	X	X	X	X
Other chronic respiratory diseases	X	X	X	X		
Cirrhosis and other chronic liver diseases	X	X	X	X	X	X
Cirrhosis and other chronic liver diseases due to hepatitis B	X	X	X	X	X	X
Cirrhosis and other chronic liver diseases due to hepatitis C	X	X	X	X	X	X
Cirrhosis and other chronic liver diseases due to alcohol use	X	X	X	X	X	X

Cause name	Deaths	YLLs	DALYs	YLDs	Prevalence	Incidence
Cirrhosis and other chronic liver diseases due to other causes	X	X	X	X	X	X
Digestive diseases	X	X	X	X	X	X
Peptic ulcer disease	X	X	X	X	X	X
Gastritis and duodenitis	X	X	X	X	X	X
Appendicitis	X	X	X	X	X	X
Paralytic ileus and intestinal obstruction	X	X	X	X	X	X
Inguinal, femoral, and abdominal hernia	X	X	X	X	X	X
Inflammatory bowel disease	X	X	X	X	X	X
Vascular intestinal disorders	X	X	X	X	X	X
Gallbladder and biliary diseases	X	X	X	X	X	X
Pancreatitis	X	X	X	X	X	X
Other digestive diseases	X	X	X	X		
Neurological disorders	X	X	X	X	X	X
Alzheimer disease and other dementias	X	X	X	X	X	X
Parkinson disease	X	X	X	X	X	X
Epilepsy	X	X	X	X	X	X
Multiple sclerosis	X	X	X	X	X	X
Motor neuron disease	X	X	X	X	X	X
Migraine			X	X	X	X
Tension-type headache			X	X	X	X
Other neurological disorders	X	X	X	X	X	X
Mental and substance use disorders	X	X	X	X	X	X
Schizophrenia			X	X	X	X
Alcohol use disorders	X	X	X	X	X	X
Drug use disorders	X	X	X	X	X	X

Cause name	Deaths	YLLs	DALYs	YLDs	Prevalence	Incidence
Opioid use disorders	X	X	X	X	X	X
Cocaine use disorders	X	X	X	X	X	X
Amphetamine use disorders	X	X	X	X	X	X
Cannabis use disorders			X	X	X	X
Other drug use disorders	X	X	X	X	X	X
Depressive disorders			X	X	X	X
Major depressive disorder			X	X	X	X
Dysthymia			X	X	X	X
Bipolar disorder			X	X	X	X
Anxiety disorders			X	X	X	X
Eating disorders	X	X	X	X	X	X
Anorexia nervosa	X	X	X	X	X	X
Bulimia nervosa	X	X	X	X	X	X
Autistic spectrum disorders			X	X	X	X
Autism			X	X	X	X
Asperger syndrome and other autistic spectrum disorders			X	X	X	X
Attention-deficit/hyperactivity disorder			X	X	X	X
Conduct disorder			X	X	X	X
Idiopathic developmental intellectual disability			X	X	X	
Other mental and substance use disorders			X	X	X	X
Diabetes, urogenital, blood, and endocrine diseases	X	X	X	X	X	X
Diabetes mellitus	X	X	X	X	X	X
Acute glomerulonephritis	X	X	X	X	X	X
Chronic kidney disease	X	X	X	X	X	X
Chronic kidney disease due to diabetes mellitus	X	X	X	X	X	X

Cause name	Deaths	YLLs	DALYs	YLDs	Prevalence	Incidence
Chronic kidney disease due to hypertension	X	X	X	X	X	X
Chronic kidney disease due to glomerulonephritis	X	X	X	X	X	X
Chronic kidney disease due to other causes	X	X	X	X	X	X
Urinary diseases and male infertility	X	X	X	X	X	X
Interstitial nephritis and urinary tract infections	X	X	X	X	X	X
Urolithiasis	X	X	X	X	X	X
Benign prostatic hyperplasia			X	X	X	X
Male infertility			X	X	X	
Other urinary diseases	X	X	X	X		
Gynecological diseases	X	X	X	X	X	X
Uterine fibroids	X	X	X	X	X	X
Polycystic ovarian syndrome	X	X	X	X	X	X
Female infertility			X	X	X	
Endometriosis	X	X	X	X	X	X
Genital prolapse	X	X	X	X	X	X
Premenstrual syndrome			X	X	X	X
Other gynecological diseases	X	X	X	X	X	X
Hemoglobinopathies and hemolytic anemias	X	X	X	X	X	X
Thalassemias	X	X	X	X	X	X
Thalassemias trait			X	X	X	X
Sickle cell disorders	X	X	X	X	X	X
Sickle cell trait			X	X	X	X
G6PD deficiency	X	X	X	X	X	X
G6PD trait			X	X	X	X
Other hemoglobinopathies and hemolytic anemias	X	X	X	X	X	

Cause name	Deaths	YLLs	DALYs	YLDs	Prevalence	Incidence
Endocrine, metabolic, blood, and immune disorders	X	X	X	X	X	X
Musculoskeletal disorders	X	X	X	X	X	X
Rheumatoid arthritis	X	X	X	X	X	X
Osteoarthritis			X	X	X	X
Low back and neck pain			X	X	X	X
Low back pain			X	X	X	X
Neck pain			X	X	X	X
Gout			X	X	X	X
Other musculoskeletal disorders	X	X	X	X	X	X
Other non-communicable diseases	X	X	X	X	X	X
Congenital birth defects	X	X	X	X	X	
Neural tube defects	X	X	X	X	X	
Congenital heart anomalies	X	X	X	X	X	
Orofacial clefts	X	X	X	X	X	
Down syndrome	X	X	X	X	X	
Turner syndrome			X	X	X	
Klinefelter syndrome			X	X	X	
Other chromosomal abnormalities	X	X	X	X	X	
Congenital musculoskeletal and limb anomalies	X	X	X	X	X	
Urogenital congenital anomalies	X	X	X	X	X	
Digestive congenital anomalies	X	X	X	X	X	
Other congenital birth defects	X	X	X	X	X	
Skin and subcutaneous diseases	X	X	X	X	X	X
Dermatitis			X	X	X	X
Psoriasis			X	X	X	X

Cause name	Deaths	YLLs	DALYs	YLDs	Prevalence	Incidence
Cellulitis	X	X	X	X	X	X
Pyoderma	X	X	X	X	X	X
Scabies			X	X	X	X
Fungal skin diseases			X	X	X	X
Viral skin diseases			X	X	X	X
Acne vulgaris			X	X	X	X
Alopecia areata			X	X	X	X
Pruritus			X	X	X	X
Urticaria			X	X	X	X
Decubitus ulcer	X	X	X	X	X	X
Other skin and subcutaneous diseases	X	X	X	X	X	X
Sense organ diseases			X	X	X	X
Glaucoma			X	X	X	
Cataract			X	X	X	
Macular degeneration			X	X	X	
Refraction and accommodation disorders			X	X	X	
Age-related and other hearing loss			X	X	X	
Other vision loss			X	X	X	
Other sense organ diseases			X	X	X	X
Oral disorders			X	X	X	X
Caries of deciduous teeth			X	X	X	X
Caries of permanent teeth			X	X	X	X
Periodontal diseases			X	X	X	X
Edentulism and severe tooth loss			X	X	X	X
Other oral disorders			X	X	X	
Sudden infant death syndrome	X	X	X			
Injuries	X	X	X	X	X	X
Transport injuries	X	X	X	X	X	X
Road injuries	X	X	X	X	X	X
Pedestrian road injuries	X	X	X	X	X	X
Cyclist road injuries	X	X	X	X	X	X

Cause name	Deaths	YLLs	DALYs	YLDs	Prevalence	Incidence
Motorcyclist road injuries	X	X	X	X	X	X
Motor vehicle road injuries	X	X	X	X	X	X
Other road injuries	X	X	X	X	X	X
Other transport injuries	X	X	X	X	X	X
Unintentional injuries	X	X	X	X	X	X
Falls	X	X	X	X	X	X
Drowning	X	X	X	X	X	X
Fire, heat, and hot substances	X	X	X	X	X	X
Poisonings	X	X	X	X	X	X
Exposure to mechanical forces	X	X	X	X	X	X
Unintentional firearm injuries	X	X	X	X	X	X
Unintentional suffocation	X	X	X	X	X	X
Other exposure to mechanical forces	X	X	X	X	X	X
Adverse effects of medical treatment	X	X	X	X	X	X
Animal contact	X	X	X	X	X	X
Venomous animal contact	X	X	X	X	X	X
Non-venomous animal contact	X	X	X	X	X	X
Foreign body	X	X	X	X	X	X
Pulmonary aspiration and foreign body in airway	X	X	X	X	X	X
Foreign body in eyes			X	X	X	X
Foreign body in other body part	X	X	X	X	X	X
Environmental heat and cold exposure	X	X	X	X	X	X
Other unintentional injuries	X	X	X	X	X	X
Self-harm and interpersonal violence	X	X	X	X	X	X
Self-harm	X	X	X	X	X	X
Self-harm by firearm	X	X	X	X	X	X

Cause name	Deaths	YLLs	DALYs	YLDs	Prevalence	Incidence
Self-harm by other specified means	X	X	X	X	X	X
Interpersonal violence	X	X	X	X	X	X
Physical violence by firearm	X	X	X	X	X	X
Physical violence by sharp object	X	X	X	X	X	X
Sexual violence			X	X	X	
Physical violence by other means	X	X	X	X	X	X
Forces of nature, conflict and terrorism, and executions and police conflict	X	X	X	X	X	X
Exposure to forces of nature	X	X	X	X	X	X
Conflict and terrorism	X	X	X	X	X	
Executions and police conflict	X	X	X	X	X	X