



Te Tauākī o Ngā Kaupapa Matua ā-Motu mō  
te Mātauranga me te Ako (NELP) me te  
Rautaki Mātauranga Matua (TES)

# Hōtaka Mahi Mātauranga

E whakaatu ana tēnei whakaahua e pēhea ana mātou e whakawhanake ana i te pūnaha mātauranga e tutuki ana i ngā hiahia o te rau tau 21 mai i te akoranga tamariki kōhungahunga, tae noa ki te mātauranga matua, e tautokohia ana e ngā whāinga e rima mō te mātauranga.

Ko te waka hourua tō mātou pūnaha mātauranga me ngā rōpū e whai wāhi mai ana - ka kapi i te akoranga kōhungahunga, kura, me te mātauranga matua me te whakangungu. Kei te iho o tō tātou pūnaha mātauranga ngā ākonga, ā, e whakatere ana rātou i te waka me ō rātou whānau. Ko ngā rā, kua whatua ki te NELP me te TES, me ētahi atu wāhanga matua o te Hōtaka Mahi Mātauranga, e āwhina ana ki te whakarite i te ahunga, ā, kia tere ai te waka i te haere ki te wāhi e hiahia ana - te matakitenga o Te Pae Tawhiti.



## MATAKITENGA MŌ TE MĀTAURANGA

### Whakamaua te pae tata kia tina - Whakamaua te pito mata kia tina...

He uri tātau nō ngā kaiōpara, kaitūhura me ngā kaihanga auaha i whakamahi i ō rātou mōhio hei tāwhai i ngā paerangi mamao. He wairua manaaki, ōrite, tūhonohono te āhua o ā tātau akoranga kia anga whakamua ai me te nanao atu i ngā hua mō ō tātau iwi me ngā huarahi anamata, āhutatanga hoki ka whāia e rātou.

### Whāia te pae tawhiti kia tata - Whakamaua te pito mata kia tata!

NGĀ WHĀINGA MŌ TE MĀTAURANGA

#### Ko ngā ākonga te iho

Kei te iho o te mātauranga ngā ākonga me ō rātou whānau.

#### Kāore he Tauārai i roto i te Mātauranga

Ka taea ngā whai wāhitanga me ngā putanga rawe mō ia ākonga.

#### Ngā Whakaakoranga me te Hautūtanga Kounga

He tino whaitake ngā whakaakoranga me te hautūtanga kounga mō ngā ākonga me ō rātou whānau.

#### Te Anamata o te Ako me te Mahi

Ngā akoranga e hāngai ana ki ngā ao o ngā tāngata o Aotearoa i tēnei rā, ā, puta noa i ō rātou rā.

#### He Mātauranga Tūmatanui Taumata Tiketike e Manaaki ana i te Katoa

E ponohia ana e toitū ana te mātauranga o Aotearoa.

# Ngā Whāinga mō te mātauranga



He mano ngā tāngata nō Aotearoa i kōrero mai i ō rātou whakaaro mō te mātauranga i roto i Aotearoa. Ka puta mai i aua kōrerorero te matakitenga me ngā whāinga rautaki a te Kāwanatanga mō te mātauranga. Kua ārahi ēnei i te mahi mātauranga a te Kāwanatanga.

Ko te whāinga o ngā kaupapa matua o te NELP me te TES he āwhina i te pūnaha mātauranga ki te tutuki i ēnei whāinga. Kei roto i tēnei puka, e whakatakotohia ia kaupapa matua ki te whāinga e tino hāngai ana.

WHĀINGA

1

## KO NGĀ ĀKONGA TE IHO

Kei te iho o te mātauranga ngā ākonga me ō rātou whānau

Kaua rawa te ākonga me tōna whāmere me tōna whānau e pāngia ana e ngā mahi kaikiri a ngā tāngata, me ngā tikanga whakanōhanga whānui ake hoki e whakapūmau ana i te kaikiri. Me whakakore ngā momo whakaweti katoa – ā-tinana, ā-waha, ā-pāpori, ā-tuihono hoki – me ngā momo kaikiri, nonotitanga hoki.

Me whakatenatena, me tautoko ngā ākonga, whānau me ō rātou hapori kia noho mōhio, ka mutu hei pātui kaha i roto i te mātauranga e whai mana ana. Me rapu ō rātou reo, ā, me whakarongo hoki ki a rātou.

Kua whiria te oranga ki te akoranga, ā, me noho tēnei hei ūnga i roto i ngā wāhanga katoa o tō tātau pūnaha mātauranga.

WHĀINGA

2

## KĀORE HE TAUĀRAI I ROTO I TE MĀTAURANGA

Ka taea ngā whai wāhitanga me ngā putanga rawe mō ia ākonga

Me wātea, me whaihua hoki te mātauranga ki te katoa. Ko ngā tauārai e aukati ana i te whai wāhi whānui o ngā ākonga i roto i te mātauranga, tae atu ki ngā tauārai ā-pūtea, ā-kikokiko hoki, me whakaiti, kia ōrite ai te āhei atu o ngā ākonga ki ngā whai wāhitanga me ngā putanga.

Me manaaki te pūnaha mātauranga, me uara hoki i te kanorautanga me ngā tāpaetanga motuhake o ngā ākonga nō ngā ao katoa, kia rangona e ngā ākonga katoa te awhi, te whai wāhitanga hoki.

WHĀINGA

3

## NGĀ WHAKAAKORANGA ME TE HAUTŪTANGA KOUNGA

He tino whaitake ngā whakaakoranga me te hautūtanga kounga mō ngā ākonga me ō rātou whānau.

Me whai ngā kaiako i ngā tikanga e tino whaitake ai ki ngā ākonga. He mea taketake ngā kaiako kanorau, whai pūkenga, whakahihiri ki te whakatutuki i ngā hiahia me ngā wawata o ngā ākonga katoa.

Me mātua waihanga i ngā kaiārahi kounga i ngā taumata katoa o te pūnaha kia puta ai ngā panonitanga pai, me te whakarei ake i ngā whakaakoranga me ngā akoranga kounga o ia rā.

WHĀINGA

4

## TE ANAMATA O TE AKO ME TE MAHI

Ngā akoranga e hāngai ana ki ngā ao o ngā tāngata o Aotearoa i tēnei rā, ā, puta noa i ō rātou rā.

Me uru ngā ākonga ki te mātauranga e taea e rātou ngā whai wāhitanga hurihuri te whai me ngā whakapātari o te anamata o ngā mahi. Kei roto i tēnei ko ngā akoranga katoa mai i te akoranga kōhungahunga tae noa ki ngā kura, ki te mātauranga matua. Ko te kirirarautanga, ngā ara ki te mahi me ngā akoranga pūmau he wāhanga hira o tēnei.

Mō ngā ākonga Māori, ko te tikanga o tēnei ko te whai i ngā pūkenga kia whai wāhi ai ki te ao Māori, te iwi whānui o Aotearoa me te horopaki ao whānui.

WHĀINGA

5

## HE MĀTAURANGA TŪMATANUI TAUMATA TIKETIKE O TE AO

E ponohia ana, e toitū ana te mātauranga o Aotearoa

Me nui te pono ki te pūnaha mātauranga. Me mātua urutau me te urupare ki ngā hiahia o ngā ākonga me tō tātau ao hurihuri. Me whakakaha ētahi wāhanga o tā tātau pūnaha, ā, ko ētahi atu wāhanga me tino whakahou.

Me mātua whakaute te mātauranga me ngā rangahau o Aotearoa e te ao whānui, ā, me te tautoko i ngā hononga Māori-Karauna.

# Te Tauākī o Ngā Kaupapa Matua ā-Motu mō te Mātauranga me te Ako (NELP) me te Rautaki Mātauranga Matua (TES)

Te Tauākī o Ngā Kaupapa Matua ā-Motu mō te Mātauranga me te Ako (NELP) me te Rautaki Mātauranga Matua (TES) e tukuna ana i raro i te Ture Mātauranga me te Whakangungu 2020.

Me whai te NELP i ngā whāinga mō te mātauranga. Koinei ko: te āwhina i ngā tamariki me ngā rangatahi ki te eke ki ō rātou torohūtanga; te whakarite i ngā rangatahi kia whai

wāhi ki te ao a te tāone me te hāpori, ā, mō te mahi hoki, te hāpai i te aumangea, te pūtohe, te māia, te auaha me te whakaaroaro, ngā pūkenga pāpori pai me te āheinga ki te waihanga i ngā hononga pai; me te āwhina i ngā tamariki me ngā rangatahi ki te aro atu ki te kanorautanga, te whai wāhitanga me te Te Tiriti o Waitangi.

Me whakarite te TES i te ahunga rautaki karioi a te Kāwanatanga mō te mātauranga matua, tae atu ki ngā whāinga ohaoha, pāpori, taiao hoki, me ngā wawata whakawhakanake a ngāi Māori me ētahi atu rōpū taupori.

Ko tētahi o ngā take o te Ture kia whakatū me te whakahaere i te pūnaha mātauranga e whakahōnora ana i te Te Tiriti o

Waitangi, ā, e tautoko ana i ngā hononga Māori-Karauna. Kei roto i te tekiana 9 e whakaritea ana ngā wāhanga matua o te Ture e pā ana ki te herenga o te Karauna kia whakamana i Te Tiriti o Waitangi. Kei roto i ēnei wāhanga he herenga e pā ana ki Te Tiriti o Waitangi mō ngā poari kura, ngā whakanōhanga mātauranga matua me ngā umanga mātauranga.

NGĀ WHĀINGA	<p><b>1</b></p> <p><b>KO NGĀ ĀKONGA TE IHO</b></p> <p>Kei te iho o te mātauranga ngā ākonga me ō rātou whānau</p>	<p><b>2</b></p> <p><b>KĀORE HE TAUĀRAI I ROTO I TE MĀTAURANGA</b></p> <p>Ka taea ngā whai wāhitanga me ngā putanga rawe mō ia ākonga</p>	<p><b>3</b></p> <p><b>NGĀ WHAKAAKORANGA ME TE HAUTŪTANGA KOUNGA</b></p> <p>He tino whaitake ngā whakaakoranga me te hautūtanga kounga mō ngā ākonga me ō rātou whānau</p>	<p><b>4</b></p> <p><b>TE ANAMATA O TE AKO ME TE MAHI</b></p> <p>Ngā akoranga e hāngai ana ki ngā ao o ngā tāngata o Aotearoa i tēnei rā, ā, puta noa i ō rātou rā</p>	<p><b>5</b></p> <p><b>HE MĀTAURANGA TŪMATANUI TAUMATA TIKETIKE O TE AO</b></p> <p>E ponohia ana, e toitū ana te mātauranga o Aotearoa</p>
	NGĀ WHAKAROTAU	<p><b>1</b> Me whakatūturu ko ngā wāhi ako he haumarū, whai wāhi he wātea hoki i te kaikiri, te toihara me te hawene</p> <p><b>2</b> Me teitei ngā wawata mō ia ākonga, me te tautoko mā te tūhonohono ki ō rātou whānau, hāpori hoki ki te auaha me te tuku i te mātauranga e urupare ana ki ō rātou hiahia, me te tautīnei i ō rātou tuakiri, reo, ahurea hoki</p>	<p><b>3</b> Whakaiti i ngā tauārai ki te mātauranga mō te katoa, tae atu ki ngā ākonga Māori, nō te Moana-nui-a-Kiwa hoki, ngā ākonga hauā me rātou e hiahia ana ki te tautoko akoranga</p> <p><b>4</b> Me whakatūturu ka whiwhi ngā ākonga katoa i ngā pūkenga taketake, tae atu ki te reo*, reo matatini me te pāngarau</p> <p><small>* Ka kapi te reo ā-waha i ngā tikanga katoa o te whakakakau e whakamahia ana e te ākonga hei reo tuatahi, tae atu ki te reo rotarota o Aotearoa</small></p>	<p><b>5</b> Whakauru tūturu i te reo Māori me ngā tikanga Māori ki ngā pito katoa o te ora o te wāhi ako</p> <p><b>6</b> Whakawhanake i ngā kaimahi ki te whakakaha i te āheinga tautoko whakaakoranga, hautūtanga me te ākonga huri noa i te rāngai mātauranga</p>	<p><b>7</b> Mahi tahi ki ngā ahumahi me ngā kaitukumahi kia whakatūturu e whiwhi ana ngā ākonga ki ngā pūkenga, mātauranga me ngā huarahi kia angitu ki te mahi</p>

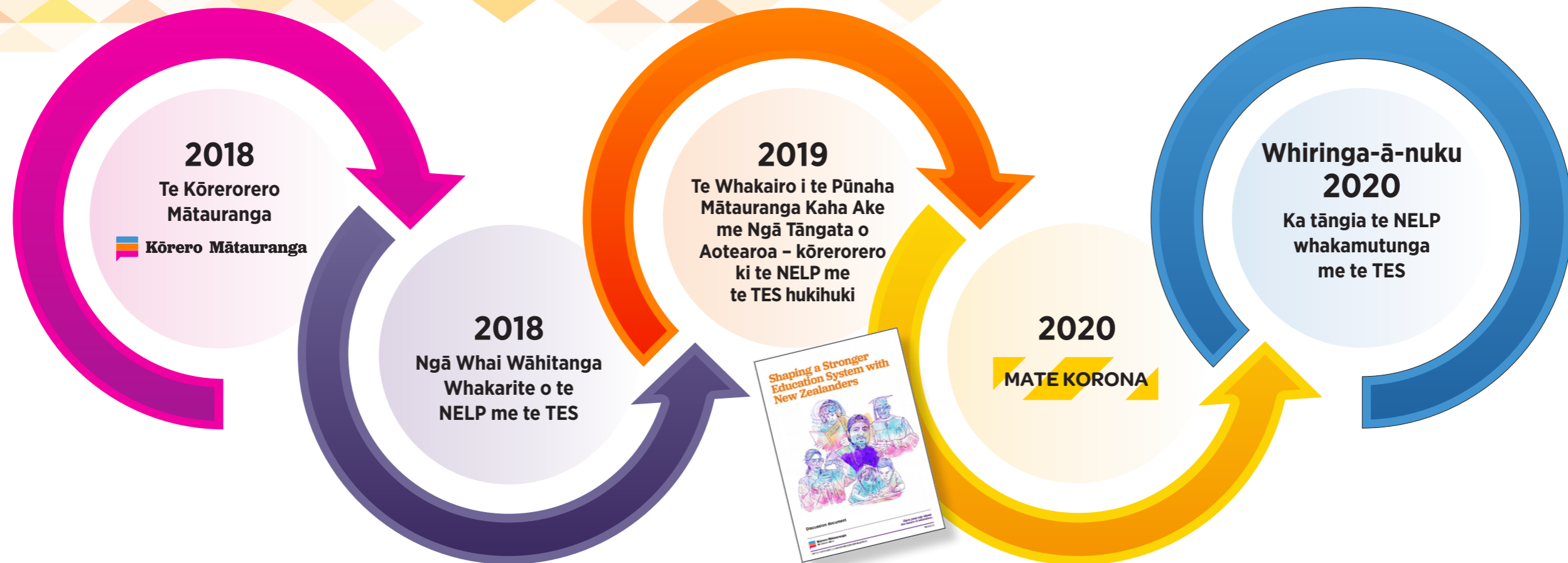
I auahatia te NELP ki te ārahi i a rātou e kāwana ana i ngā ratonga kōhungahunga whai raihana, ngā kōhanga reo, ngā kura auraki me ngā kura Māori.

Ināhoki, ko ngā ratonga akoranga kohungahunga whai raihana e herea ana kia whakaaro ki te NELP hei wāhanga o te Paerewa Kāwana, Kaiwhakahaere me te Whakahaere (GMA). Me āta whakaaro ngā poari o ngā kura ki te NELP, tae atu ki te whakawhanake, whakahou rānei i ō rātou tūtohinga.

Ka whakarite te TES i te ahunga mō te mātauranga matua. Me whakaatu ngā Whakahaere Mātauranga Matua i tō rātou whakaarohanga ki te TES. Me whakamana te Kōmihana Mātauranga Matua i te TES, ā, me whakaaro te Mana Tohu Mātauranga o Aotearoa ki te TES.



# Ka pēhea te whakawhanake i ēnei kaupapa matua



I te tau 2018 i tīmata te Tāhuhu o te Mātauranga i te raupapatanga o ngā kōrerorero mātauranga hei whakamōhio ki te Hōtaka Mahi Mātauranga.

Mā te Kōrero Mātauranga, i kōrero mātou ki te mano tāngata o Aotearoa mō ō rātou wheako mātauranga, ā, me pēhea mātou e hanga i te pūnaha mātauranga me te whakangungu tiketike ā-ao mō Aotearoa.

I te mutunga o 2018 me te tīmatanga o 2019, i whakapā atu te Tāhuhu Mātauranga ki te whānuitanga o ngā ākonga me ngā māngai rāngai.

I kōrero mātou ki ngā ākonga kanorau o ngā pakeke rerekē nō ngā hāpori katoa kāore mātou e tino rongu, ā, he uaua te whakapā atu, ā, kāore ō rātou hiahia e tino tutukihia e te rāngai mātauranga.

I rongu mātou mō ō rātou wheako o te akoranga kohungahunga me te kura, mō ngā tauārai e pā mai ana ki te whai wāhitanga, ā, me pēhea te whakapai ake i te mātauranga ki Aotearoa.

I whiwhi hoki mātou ki ngā urupare maha mō ngā wheako tāngata mō te pūnaha mātauranga matua me te whakangungu, ā, he aha ka whakarerekētia pea e te TES.

I whakamahia ngā mea i rangona e mātou i roto i ēnei whakapānga ki te whakamōhio i ngā kaupapa matua mō te NELP me te TES hukihuki.

I te mutunga o te tau 2019 i whakamahia e te Manatū te uiuinga whānui mō ngā huinga kaupapa matua o te NELP me te TES i marohia.

Neke atu i te 70 ngā hui ā-hāpori me ngā rōpū rāngai, ā, ka whakahaere i ngā uiuinga tuihono e rua. I hiahia mātou ki te whakatūturu i āhe i te whānuitanga o ngā tāngata o Aotearoa te tuari i ō rātou whakaaro mō ngā kaupapa nui i roto i te mātauranga.

I pātai mātou he aha te whakaaro o ngā tāngata mō ngā kaupapa matua i marohitia, mēnā ka tino whakarerekē i te pūnaha mātauranga me te whakangungu, ā, mēnā he mea kei te ngaro.

Ko ngā mea i rangona e mātou i tēnei uiuinga ka whakamahia ki te whakawhanake i te NELP me te TES whakamutunga.

I te Poutūterangi 2020 i pā mai te mate urutā Mate Korona ki Aotearoa.

Ko te urupare o te Kāwanatanga ki te mate urutā, otirā te aukati i ngā whakaurunga mātauranga whitu wiki, i tīpako i te maha o ngā take ōritetanga kei roto i te pūnaha mātauranga me te whakangungu.

Ko ngā mea kua ako mātou i te urupare ki te Mate Karauna, ā, ngā mea i rongu mātou i ngā ākonga mō ō rātou wheako i tēnei wā, kua whakakaha i te hira o ngā take i pāngia e ngā kaupapa matua a te NELP me te TES i roto i tēnei tuhinga.

Ka kitea ngā hononga ki ngā taunakitanga poto me ngā whakarāpopototanga whakapānga i whakahaeretia ki te whakamōhio ki ngā kaupapa matua te NELP me te TES ki konei:

<https://conversation.education.govt.nz>

Ka tāngia te NELP me te TES me tētahi huinga kaupapa matua kotahi e hāngai ana ki ngā kōrero i rangona e mātou nō ngā tāngata o Aotearoa i ngā tau e toru kua pahure ake nei. I whakarite rātou i te ahunga mō te katoa o te pūnaha mātauranga mō ngā tau e rima e heke mai nei, ki tua atu hoki.

# He aha i hira ai ēnei kaupapa matua?



He wāhanga ngā kaupapa matua nō te NELP me te TES, ā, ka tohu he aha e hiahiatia ana puta noa i te pūnaha mātauranga ki te whakapai ake i ngā putanga mō ngā ākonga. Ka whakarite ēnei i te ahunga mō ngā kaiwhakarato mātauranga me ngā ākonga.

WHĀINGA 1	WHĀINGA 2	WHĀINGA 3	WHĀINGA 4	WHĀINGA 5			
<p><b>KO NGĀ ĀKONGA TE IHO</b></p> <p>Kei te iho o te mātauranga ngā ākonga me ō rātou whānau</p>	<p><b>KĀORE HE TAUĀRAI I ROTO I TE MĀTAURANGA</b></p> <p>Ka taea ngā whai wāhitanga me ngā putanga rawe mō ia ākonga</p>	<p><b>NGĀ WHAKAAKORANGA ME TE HAUTŪTANGA KOUNGA</b></p> <p>He tino whaitake ngā whakaakoranga me te hautūtanga kounga mō ngā ākonga me ō rātou whānau</p>	<p><b>TE ANAMATA O TE AKO ME TE MAHI</b></p> <p>Ngā akoranga e hāngai ana ki ngā ao o ngā tāngata o Aotearoa i tēnei rā, ā, puta noa i ō rātou rā</p>	<p><b>HE MĀTAURANGA TŪMATANUI TAUMATA TIKETIKE Ā-AO</b></p> <p>E ponohia ana, e toitū ana te mātauranga o Aotearoa</p>			
<p><b>1</b></p> <p>Me whakatūturu ko ngā wāhi ako he haumarū, whai wāhi, he wātea hoki i te kaikiri, te toihara me te hawene</p>	<p><b>2</b></p> <p>Me teitei ngā wawata mō ia ākonga, me te tautoko mā te tūhonohono ki ō rātou whānau, hāpori hoki ki te auaha me te tuku i te mātauranga e urupare ana ki ō rātou hiahia, me te tautūnei i ō rātou tuakiri, reo, ahurea hoki</p>	<p><b>3</b></p> <p>Whakaiti i ngā tauārai ki te mātauranga mō te katoa, tae atu ki ngā ākonga Māori, nō te Moana-nui-a-Kiwa hoki, ngā ākonga hauā me rātou e hiahia ana ki te tautoko akoranga</p>	<p><b>4</b></p> <p>Me whakatūturu ka whiwhi ngā ākonga katoa i ngā pūkenga taketake, tae atu ki te reo*, reo matatini me te pāngarau</p> <p><small>* ka kapi te reo ā-waha i ngā tikanga katoa o te whakakakau e whakamahia ana e te ākonga hei reo tuatahi, tae atu ki te Reo Rotarota o Aotearoa.</small></p>	<p><b>5</b></p> <p>Whakauru tūturu i te reo Māori me ngā tikanga Māori ki ngā pito katoa o te ora o te wāhi ako</p>	<p><b>6</b></p> <p>Whakawhanake i ngā kaimahi ki te whakakaha i te āheinga tautoko whakaakoranga, hautūtanga me te ākonga huri noa i te rāngai mātauranga</p>	<p><b>7</b></p> <p>Mahi tahi ki ngā ahumahi me ngā kaitukumahi kia whakatūturu e whiwhi ana ngā ākonga ki ngā pūkenga, mātauranga me ngā huarahi kia angitu ki te mahi</p>	<p><b>8</b></p> <p>Whakakaha i te tāpaetanga o te rangahau me te mātauranga Māori ki te whakatutuki i ngā wero ā-rohe, ā-ao anō hoki (TES ANAKE)</p>
<p>Me noho haumarū, whita, whai wāhi me te whakamahana ngā ākonga, ngā kaiako me ngā kaimahi katoa. Me wātea rātou i ngā whanonga whakaparāhako, aukati ira, whakawetiwhi hoki, tae atu ki te ngākaukino takitahi, whakanōhanga, e kaha whakapā kino, karioi hoki ki te hauora, te oranga, te tuakiri me te tutukitanga mātauranga.</p>	<p>Ka kino te pānga mai o ngā kawatau iti, te ngākaukino takitahi me te whakanōhanga ki te oranga, nekehanga me te tutukitanga o ngā ākonga. Me tautoko i ngā ākonga katoa ki te hanga me te tutuki i ō rātou wawata whaiaro, mātauranga me te mahi, ā, me te tautoko ki te āta whai wāhi ki ō rātou whānau, whāmere, me ngā hāpori. Ka hāpaingia, ka panonitia ngā putanga mātauranga me te oranga mā ngā hononga mahi tahi i waenga i ngā wāhi ako me ngā whānau, whāmere, kaitiaki, me te hāpori whānui, tae atu ki ngā rōpū whakapono me te ahurea.</p>	<p>Ka aukatia ngā ākonga e ētahi tauārai e whakaiti ana i tō rātou whai wāhitanga ki te mātauranga me te whakangungu, ā, ka whakaiti i ō rātou putanga. He mea nui kia piki te pai o ngā ākonga, ā, ka mōhiotia ngā tauārai ā-tinana, āhei, tautoko me te ahumoni, ā, ka whakaitia kia tino tautokotia ngā ākonga ki te whakatinana katoa i te motika ki te mātauranga. He tino hira tēnei ki ngā ākonga o te Moana-nui-a-Kiwa, ākonga hauā, me rātou e whai ana i te tautoko i ngā hiahia akoranga me rātou nō ngā kāinga rawakore, me rātou e pāngia ana ki ngā tauārai ki te uru ki te mātauranga.</p>	<p>He tino kaupapa tō ngā pūkenga taketake i te whanaketanga o te tangata mō te tauoranga katoa. Ka hoatu i te mātauranga me ngā pūkenga ki ngā ākonga mō te akoranga, whiwhi mahi hoki, me te āta whai wāhi ki roto i ō rātou hāpori ā-rohe, ā-ao hoki. Me āhei ngā ākonga ki te whiwhi me te whanake i ngā pūkenga reo, reo matatini me te pāngarau, ngā āheinga matua, me te matihiko matatini ki te tautoko i ngā putanga pai, me ngā kōwhiringa whiwhi mahi haere ake nei. He tino mahi tā te rāngai Mātauranga Pakeke me te Hāpori ki te tautoko i te whanaketanga o ngā pūkenga taketake mō ngā ākonga pakeke.</p>	<p>Ko te reo Māori me ngā tikanga Māori (ngā uara Māori, tikanga, tukanga, ritenga, āhuatanga me ngā kawa) he wāhi waiwai o te tuku ihotanga o Aotearoa. Kei te tuakiri o ngā tāngata katoa o Aotearoa. Me awahi, tautoko me te whakakaha ēnei. Mā te ako i te reo Māori me te waia ki te tikanga, e whakakaha ana ngā ākonga Māori i ō rātou tuakiritanga me te āhei ki te whai wāhi ki Te Ao Māori, ā, ka mahi ngā ākonga ehara i te Māori ki ngā māramatanga ahurea ngātahi.</p>	<p>Ka whakatakotohia e te kounga o ngā whakaakoranga, kaiārahi hoki ngā āhuatanga e tino whaitake ai mō ngā ākonga. He mea hira kia haumi mātou ki ngā pūkenga, hihiri hoki puta noa i te pūnaha mātauranga me te whakangungu ki te whakatutuki i ngā hiahia o ngā ākonga katoa me ō rātou wawata anamata. Ki te urupare whakaaweawe ki ngā hiahia kanorau, panoni hoki, me te mārama me te whakamahi i te taunakitanga e puta ana mō te mahi whakaaweawe, me ako tonu ngā kaiako me ngā kaihautū ake i ngā wāhi ako katoa.</p>	<p>Me whai a Aotearoa i te pūnaha mātauranga me te whakangungu e whakarite ana i ngā ākonga mō te ao hurihuri me te anamata o te mahi. Me whakarato i ngā pūkenga e hiahia ana kia whakapuāwai ngā ākonga, ngā kaituku mahi me ngā hāpori. Me whakarato te mātauranga ki ngā ākonga i ngā pūkenga kia angitu i te wā moata, me te whakatūturu ka āhei ngā tāngata ki te whai pūkenga me te ako anō i te katoa o ō rātou tauoranga, otirā te panoni o te ohaoha me te hangarau.</p>	<p>He tino mahi tō te rangahau, pūtaiao me ngā mātanga hāngai ki te whakatūturu i te oranga o ngā tāngata katoa o Aotearoa. He hiahia e haere tonu ana e tipu tonu ana ki te rangahau, mātauranga me te auahatanga e whakamōhio ana ki ngā whakatikahanga ki ngā wero hou, pūmau hoki ā-rohe, ā-ao hoki, tae atu ki te whakarauora i ngā pānga ohaoha, pāpori me te hauora karioi o te Mate Karauna. He mea hira tēnei ki te hanga i te mahi tino whai take, tāpiri uara taketake, me te ohaoha waro kore, e whakarato ana i ngā whakataunga ki ngā raruraru pāpori whiwhiwhi, ā, me te huaki i ngā taitapa hou o te mātauranga, pūkenga me ngā āhuatanga whakaaro haere ake nei.</p>

# Ka pēhea te āhua o te mea pai?



Ko te whāinga o ēnei kaupapa matua ko te whakapai ake i ngā putanga mō ngā ākonga katoa puta noa i te pūnaha mātauranga; i roto i te akoranga kōhungahunga, kura me te mātauranga matua me te whakangungu. Ina whakaawewetia ngā kaupapa matua o te NELP me te TES puta noa i te pūnaha mātauranga, he mātauranga pai ake, urupare hoki te wheako o ngā ākonga katoa i ngā wāhi katoa o ā rātou haerenga mātauranga.

WHĀINGA 1	WHĀINGA 2	WHĀINGA 3	WHĀINGA 4	WHĀINGA 5			
<p><b>KO NGĀ ĀKONGA TE IHO</b></p> <p>Kei te iho o te mātauranga ngā ākonga me ō rātou whānau</p>	<p><b>KĀORE HE TAUĀRAI I ROTO I TE MĀTAURANGA</b></p> <p>Ka taea ngā whai wāhitanga me ngā putanga rawe mō ia ākonga</p>	<p><b>NGĀ WHAKAAKORANGA ME TE HAUTŪTANGA KOUNGA</b></p> <p>He tino whaitake ngā whakaakoranga me te hautūtanga kounga mō ngā ākonga me ō rātou whānau</p>	<p><b>TE ANAMATA O TE AKO ME TE MAHI</b></p> <p>Ngā akoranga e hāngai ana ki ngā ao o ngā tāngata o Aotearoa i tēnei rā, ā, puta noa i ō rātou rā</p>	<p><b>HE MĀTAURANGA TŪMATANUI TAUMATA TIKETIKE Ā-AO</b></p> <p>E ponohia ana, e toitū ana te mātauranga o Aotearoa</p>			
<p><b>1</b></p> <p>Me whakatūturu ko ngā wāhi ako he haumaruru, whai wāhi, he wātea hoki i te kaikiri, te toihara me te hawene</p>	<p><b>2</b></p> <p>Me teitei ngā wawata mō ia ākonga, me te tautoko mā te tūhonohono ki ō rātou whānau, hāpori hoki ki te auaha me te tuku i te mātauranga e urupare ana ki ō rātou hiahia, me te tautū nei i ō rātou tuakiri, reo, ahurea hoki</p>	<p><b>3</b></p> <p>Whakaiti i ngā tauārai ki te mātauranga mō te katoa, tae atu ki ngā ākonga Māori, nō te Moana-nui-a-Kiwa hoki, ngā ākonga hauā me rātou e hiahia ana ki te tautoko akoranga</p>	<p><b>4</b></p> <p>Me whakatūturu ka whiwhi ngā ākonga katoa i ngā pūkenga taketake, tae atu ki te reo*, reo matatini me te pāngarau</p> <p><small>* ka kapi te reo ā-waha i ngā tikanga katoa o te whakakakau e whakamahia ana e te ākonga hei reo tuatahi, tae atu ki te Reo Rotarota o Aotearoa.</small></p>	<p><b>5</b></p> <p>Whakauru tūturu i te reo Māori me ngā tikanga Māori ki ngā pito katoa o te ora o te wāhi ako</p>	<p><b>6</b></p> <p>Whakawhanake i ngā kaimahi ki te whakakaha i te āheinga tautoko whakaakoranga, hautūtanga me te ākonga huri noa i te rāngai mātauranga</p>	<p><b>7</b></p> <p>Mahi tahi ki ngā ahumahi me ngā kaitukumahi kia whakatūturu e whiwhi ana ngā ākonga ki ngā pūkenga, mātauranga me ngā huarahi kia angitu ki te mahi</p>	<p><b>8</b></p> <p>Whakakaha i te tāpaetanga o te rangahau me te mātauranga Māori ki te whakatutuki i ngā wero ā-rohe, ā-ao anō hoki (TES ANAKE)</p>
<p><b>HE PĒHEA TE ĀHUA O TE MEA PAI:</b></p> <p>Me awahi ngā wāhi ako i te kanorautanga me te whakarato i te oranga pai, te hauora tinana me te hauora hinengaro mō ngā ākonga, kaiako me ngā kaimahi</p> <p>Me whai ngā wāhi ako i ngā kaupapahere, ngā mahere me te tautoko pakari hei aukati i te kaikiri, te aukati ira, te ngākaukino me ngā kawatau ngoikore</p> <p>E mihia ana, e tautokohia ana, e kaingākau nuitia ana, e rongohia ana ngā ākonga me ngā kaimahi, tae atu ki ngā tāngata hauā, te hunga hiahia tautoko ako, te hunga hinengaro kanorau rānei, me rātou e tautuhia ana hei LGBTQI+<sup>1</sup></p>	<p><b>HE PĒHEA TE ĀHUA O TE MEA PAI:</b></p> <p>E whai wheako ai ngā ākonga ki ngā ahurea whai wāhi hei manaaki, hei tautuhi, hei whakaata anō hoki i ō rātou ake tuakiri</p> <p>He wawata tiketike mō ngā ākonga katoa te whakaaro tuatahi hou. E werohia ana, e whakakorehia ana hoki ngā ngākaukino tawhito, me ngā kawatau ngoikore</p> <p>E āta whakaurua ana, e uaratia ana hoki ngā whānau me ngā hāpori i roto i te auaha me te whakarato o te mātauranga, ā, i roto i te taiao ako</p> <p>He ara mātauranga me te whakangungu e wātea ana, ā, he ōrite te whakarato mō ngā ākonga katoa</p> <p>Ka whiwhi, ka tutuki hoki ngāi Māori i te angitūtanga mātauranga hei Māori, ā, e tautoko ana te mātauranga i te rangatiratanga Māori</p>	<p><b>HE PĒHEA TE ĀHUA O TE MEA PAI:</b></p> <p>He whai wāhi me te urupare te taiao ako ki ngā hiahia ākonga, ā, ka āhehi ngā ākonga katoa te uru ki ngā kōwhiringa pāpori me te ako katoa</p> <p>Kāore he tauārai ōkiko, whakatapoko, tautoko, ahumoni rānei mō te kore noa iho ki te mātauranga</p> <p>He tautoko tāpiri e wātea ana mō ngā ākonga hauā me rātou e whai ana i ngā hiahia ake kia whai wāhi tonu me te noho angitu i te mātauranga</p> <p>E tautokohia ana ngā ākonga ki te whakawhiti angitu i waenganui i te mātauranga me te whiwhi mahi</p> <p>E wātea ana te mātauranga me te tautoko mātanga mō ngā ākonga, whānau, iwi, whānau nō te Moana-nui-a-Kiwa, me ngā kaiako, ina hiahia ana</p> <p>E whai ana ngā ākonga i te āhehi ki ngā hangarau matihiko e tika ana kia whai wāhi rātou ki ngā wheako ako katoa</p>	<p><b>HE PĒHEA TE ĀHUA O TE MEA PAI:</b></p> <p>E whai ana ngā ākonga ki ngā pūkenga reo, reo matatini, pāngarau me te matihiko matatini e whakamana ana i te ako me te whanake haere ake nei</p> <p>Me whakawhanake ngā ākonga katoa i ngā matatau me ngā āheitanga matua tae atu ki te whakawhitihiti kōrero, whakatau tūraru, āta whakaaro, manawaroa, me ngā pūkenga pāpori</p> <p>Ko ngā ākonga kāore anō kia whanake i ngā pūkenga taketake matua e tautuhia ana, ā, e āhehi ana ki te whakauru ki ngā tautoko mātanga tāpiri</p> <p>Ina e tika ana, he kōwhiringa ako kanorau mā ngā ākonga ki te whakawhanake i te mātau matihiko, ā, e āhehi ana ki te mārama ki ngā mōhiotanga matihiko e tūhono ana rātou</p>	<p><b>HE PĒHEA TE ĀHUA O TE MEA PAI:</b></p> <p>E whakapūmautia ana te Tikanga Māori ki ngā uara, ngā tikanga me te ahurea whakahaere, i runga i te kupu āwhina a ngāi Māori, me te kōrerorero atu ki ngāi Māori</p> <p>E tautokohia ana ngā kaiako me ngā kaimahi ki te whakawhanake i tō rātou reo Māori me ō rātou pūkenga, āheitanga tikanga Māori hoki</p> <p>He kōwhiringa mō ngā ākonga ki te ako i te reo Māori, mā te reo Māori hoki</p> <p>E whakapūmautia ana te herenga ki Te Tiriti i roto i ngā kaupapahere me ngā tikanga katoa tae atu ki te rautaki, ngā whanonga, ngā mahi, ngā ratonga, me ngā rauemi katoa</p> <p>E whakaurua ana te tuakiri, te reo, me te ahurea Māori ki te whakaako, te ako me te tiaki ākonga</p>	<p><b>HE PĒHEA TE ĀHUA O TE MEA PAI:</b></p> <p>Ka tautuhi me te urupare ngā wāhi ako ki ngā angotanga āheitanga, ā, ka haumi ki ā rātou kaimahi ki te whakakaha i te whakaako, te hautūtanga, te tautoko ako, me ngā pūkenga ki te tautoko i te ako tuihono, mamao hoki</p> <p>He tautoko haere tonu, he kōwhiringa hoki mā ngā kaiako me ngā kaimahi, tae atu ki ngā kaiako, ngā kaitautoko kaiako, ngā kaimahi tautoko, ngā kaihautū me ngā mātanga puta noa i ō rātou umanga</p> <p>He māia, he āhehi hoki ngā kaiako, ngā kaiwhakaako hoki ki te whakaako i ngā ākonga kanorau</p> <p>Ka whakatipuria, ka uaratia e ngā wāhi ako ngā kaiwhakaako matatau, kanorau hoki, tae atu ki ngāi Māori, ki te hunga nō te Moana-nui-a-Kiwa, ki te hunga hauā rānei</p>	<p><b>HE PĒHEA TE ĀHUA O TE MEA PAI:</b></p> <p>Ka tino arotahi, urupare hoki te whakaako me te ako ki ngā hiahia wāhi mahi</p> <p>E tautokohia ana, e whakatenatenahia ana ngā ākonga ki te aru i ngā ara mātauranga, umanga hoki e pai ai ki ā rātou, ā, kāore e herea ana e ngā whakaaro totoka me ngā ngākaukino e whakawhāiti ai i ō rātou kōwhiringa</p> <p>Ka tautoko te ratonga umanga hiwa i ngā ara mārama mō te ako me te whai mahi</p> <p>Ka taea e ngā tāngata te whai pūkenga anō me te ako anō i te tauoranga katoa me te whai pūkenga e hāngai ana ki te mahi</p> <p>Ka āhehi ngā ākonga te uru ki ngā hōtaka tāwariwari me te urutau me ngā taura mātauranga e whakaata ana i ō rātou hiahia me ngā hiahia o ngā kaituku mahi</p>	<p><b>HE PĒHEA TE ĀHUA O TE MEA PAI:</b></p> <p>Ka whakarato te rāngai mahi kanorau, toitū hoki i te hōpua whānui o te mātauranga rangahau me te pūmanawa</p> <p>E tautokohia ana tā te Māori ārahi i te kōkiritanga me te whakamōhiotanga nō te mātauranga</p> <p>He hiranga, he mahi tahi, he tūhonohono hoki te rangahau puta noa i ngā mātāi me ngā whakanōhanga</p> <p>Ka tāpae ngā Whakahaere Mātauranga Matua i ngā āhuatanga auaha ki te whakatau i ngā wero ohaoha, pāpori, taiao hoki</p>

<sup>1</sup> Kei roto ko ngā tāngata e tautuhi ana hei wahine moe wahine, takatāpui, wahine moe wahine, irawhiti, iraké pātāi ana rānei, taihemarua, tētahi atu taihemahema, ira rānei, he tuakiri kanorau taihemahema rānei.



He wāhanga rautaki matua e rua te NELP me te TES hei wāhanga nō te Hōtaka Mahi Mātauranga e āwhina ai ki te whakatūturu ka tutuki te pūnaha mātauranga i ngā hiahia o ngā ākonga katoa i Aotearoa, ahakoa ko wai rātou, nō hea rātou rānei.

He tīaroaro mārama i waenganui i te NELP me te TES, ā, me ngā kaupapa matua e whakahaeretia ana e te Kāwanatanga mā te Hōtaka Mahi Mātauranga.

Ka whakaatu tēnei poukapa i ngā wāhi o ngā kaupapa matua o te Hōtaka Mahi Mātauranga e whai ana i ngā mahi, i ngā herenga rānei kua pānuitia e tautoko ai i ngā wāhi ako ki te whakahaere i te NELP me te TES.



## TŪEMI HŌTAKA MAHI MĀTAURANGA

	WHĀINGA 1		WHĀINGA 2		WHĀINGA 3		WHĀINGA 4	WHĀINGA 5
	<b>KO NGĀ ĀKONGA TE IHO</b> Kei te iho o te mātauranga ngā ākonga me ō rātou whānau		<b>KĀORE HE TAUĀRAI I ROTO I TE MĀTAURANGA</b> Ka taea ngā whai wāhitanga me ngā putanga rawe mō ia ākonga		<b>NGĀ WHAKAAKORANGA ME TE HAUTŪTANGA KOUNGA</b> He tino whaitake ngā whakaakoranga me te hautūtanga kounga mō ngā ākonga me ō rātou whānau		<b>TE ANAMATA O TE AKO ME TE MAHI</b> Ngā akoranga e hāngai ana ki ngā ao o ngā tāngata o Aotearoa i tēnei rā, ā, puta noa i ō rātou rā	<b>HE MĀTAURANGA TŪMATANUI TAUMATA TIKETIKE Ā-AO</b> E ponoia ana, e toitū ana te mātauranga o Aotearoa
	1	2	3	4	5	6	7	8
Me whakatūturu ko ngā wāhi ako he haumaruru, whai wāhi, he wātea hoki i te kaikiri, te toi hāra me te hawene	✓	✓						
Me teitei ngā wawata mō ia ākonga, me te tautoko mā te tūhonohono ki ō rātou whānau, hapori hoki ki te auaha me te tuku i te mātauranga e urupare ana ki ō rātou hiahia, me te tautīnei i ō rātou tuakiri, reo, ahurea hoki		✓	✓	✓				
Whakaiti i ngā tauārai ki te mātauranga mō te katoa, tae atu ki ngā ākonga Māori, nō te Moana-nui-a-Kiwa hoki, ngā ākonga hauā me rātou e hiahia ana ki te tautoko akoranga			✓	✓				
Me whakatūturu ka whiwhi ngā ākonga katoa i ngā pūkenga taketake, tae atu ki te reo*, reo matatini me te pāngarau <small>* ka kapi te reo ā-waha i ngā tikanga katoa o te whakakakau e whakamahia ana e te ākonga hei reo tuatahi, tae atu ki te Reo Rotarota o Aotearoa.</small>				✓				
Whakauru tūturu i te reo Māori me ngā tikanga Māori ki ngā pito katoa o te ora o te wāhi ako					✓	✓		
Whakawhanake i ngā kaimahi ki te whakakaha i te āheinga tautoko whakaakoranga, hautūtanga me te ākonga huri noa i te rāngai mātauranga						✓	✓	
Mahi tahi ki ngā ahumahi me ngā kaitukumahi kia whakatūturu e whiwhi ana ngā ākonga ki ngā pūkenga, mātauranga me ngā huarahi kia angitu ki te mahi							✓	
Whakakaha i te tāpaetanga o te rangahau me te mātauranga Māori ki te whakatutuki i ngā wero ā-rohe, ā-ao anō hoki (TES ANAKE)								✓
He hiki i te whakatutukitanga mō ngā ākonga Māori	✓	✓	✓	✓	✓	✓		
He hiki i te whakatutukitanga mō ngā ākonga nō te Moana-nui-a-Kiwa	✓	✓	✓			✓		
Mahere Mahi Akoranga Kōhungahunga			✓			✓	✓	
He Whakahou i te pūnaha Tomorrow's Schools	✓	✓	✓	✓	✓	✓		
Te Rautaki Ohu Mahi Mātauranga					✓	✓		
He whakahou i te pūnaha pūtea mō te akoranga kōhungahunga me ngā kura			✓					
He tino whakahou o ngā rawa a ngā kura			✓					
Marautanga, aromatawai me ngā tohu (tae atu ki te arotake CPA me te NCEA)	✓	✓	✓	✓	✓	✓	✓	
Mahere Mahi Tautoko Akoranga		✓	✓			✓		
Te Whakahou i te Mātauranga Ahumahinga			✓	✓			✓	
Te whakakaha i te mātauranga matua				✓	✓	✓	✓	✓
Te tautoko i te rangahau i roto i te mātauranga matua								✓
Te haumi ki te rautaki oranga/tamariki me te oranga rangatahi	✓	✓	✓					



# Whakamanatanga o te Tauākī o Ngā Kaupapa Matua ā-Motu mō te Mātauranga me te Ako i roto i ngā ratonga akoranga kōhungahunga



He rōpū kaupapa matua te Tauākī o Ngā Kaupapa Matua ā-Motu mō te Mātauranga me te Ako (te NELP) i auahatia ki te ārahi i a rātou e ārahi ana i ngā ratonga akoranga kōhungahunga, tae atu ki ngā kōhanga reo, ki te arotahi i ā rātou mahi o ia rā ki ngā mea ka tino whai pānga nui ki ngā tamariki me ngā taiohi. Ka āhei ngā kaupapa matua te whakamahi i te taha o ngā kaupapa matua ā-rohe o te ratonga, ki te āwhina i ngā ākonga katoa ki te ahu whakamua me te whakatutuki i ō rātou wawata.



Ka whakature ngā Waeture Mātauranga (Ratonga Kōhungahunga) 2008 kia tiro ngā kaiwhakarato ratonga kōhungahunga whai raihana ki te NELP hei wāhanga o te Paerewa mō te Kāwana, Kaiwhakahaere me te Whakahaere (GMA).

Ka whakatikatia te paerua raihana kia tīaroaro me te tautoko i te Paerewa GMA.

WHĀINGA 1	WHĀINGA 2	WHĀINGA 3	WHĀINGA 4	WHĀINGA 5
-----------	-----------	-----------	-----------	-----------

## KO NGĀ ĀKONGA TE IHO

Kei te iho o te mātauranga ngā ākonga me ō rātou whānau

## KĀORE HE TAUĀRAI I ROTO I TE MĀTAURANGA

Ka taea ngā whai wāhitanga me ngā putanga rawe mō ia ākonga

## NGĀ WHAKAAKORANGA ME TE HAUTŪTANGA KOUNGA

He tino whaitake ngā whakaakoranga me te hautūtanga kounga mō ngā ākonga me ō rātou whānau

## TE ANAMATA O TE AKO ME TE MAHI

Ngā akoranga e hāngai ana ki ngā ao o ngā tāngata o Aotearoa i tēnei rā, ā, puta noa i ō rātou rā

## HE MĀTAURANGA TŪMATANUI TAUMATA TIKETIKE Ā-AO

E ponohia ana, e toitū ana te mātauranga o Aotearoa



He mahi mā ngā ratonga kōhungahunga

<p><b>1</b></p> <p>Me whakatūturu ko ngā wāhi ako he haumarua, whai wāhi he wātea hoki i te kaikiri, te toihara me te hawene</p>	<p><b>2</b></p> <p>Me teitei ngā wawata mō ia ākonga, me te tautoko mā te tūhonohono ki ō rātou whānau, hāpori hoki ki te auaha me te tuku i te mātauranga e urupare ana ki ō rātou hiahia, me te tauti nei i ō rātou tuakiri, reo, ahurea hoki</p>	<p><b>3</b></p> <p>Whakaiti i ngā tauārai ki te mātauranga mō te katoa, tae atu ki ngā ākonga Māori, nō te Moana-nui-a-Kiwa hoki, ngā ākonga hauā me rātou e hiahia ana ki te tautoko akoranga</p>	<p><b>4</b></p> <p>Me whakatūturu ka whiwhi ngā ākonga katoa i ngā pūkenga taketake, tae atu ki te reo, reo matatini me te pāngarau</p>	<p><b>5</b></p> <p>Whakauru tūturu i te reo Māori me ngā tikanga Māori ki ngā pito katoa o te ora o te wāhi ako</p>	<p><b>6</b></p> <p>Whakawhanake i ngā kaimahi ki te whakakaha i te āheinga tautoko whakaakoranga, hautūtanga me te ākonga huri noa i te rāngai mātauranga</p>	<p><b>7</b></p> <p>Mahi tahi ki ngā ahumahi me ngā kaitukumahi kia whakatūturu e whiwhi ana ngā ākonga ki ngā pūkenga, mātauranga me ngā huarahi kia angitu ki te mahi</p>	<p><b>8</b></p> <p>Whakakaha i te tāpaetanga o te rangahau me te mātauranga Māori ki te whakatutuki i ngā wero ā-rohe, ā-ao anō hoki (TES ANAKE)</p>
--	---	--	---	---	---	--	--

<p>Pātai ki ngā ākonga, ngā whānau me ngā kaimahi mō ō rātou wheako o te kaikiri, te ngākaukino me te hawene, ā, whakamahia aua mōhiotanga ki te whakaiti i ēnei whanonga</p> <p>Me whakarite i ngā tukanga kia urupare wawe me te whakatika i ngā amuamu, āwangawanga rānei mō te kaikiri, ngākaukino me te hawene</p> <p>Hangaia te ahurea haumarua, whakauru hoki e uaratia ana te kanorautanga, ā, ko ngā ākonga me ngā kaimahi katoa, tae atu ki a rātou e tautuhi ana hei LGBTQIA+, e hauā ana, he hiahia tautoko akoranga, he hinengaro kanorau, nō ngā hāpori mātāwaka kanorau e whakaaro ana e whai wāhi ana rātou ki reira.</p>	<p>Mahi tahi me ngā whānau me ngā whānau ki te whakaāhei i ngā ākonga katoa ki te hanga me te whakatutuki i ō rātou wawata</p> <p>Āwhinatia ngā kaimahi ki te hanga i te mōhiotanga o te ngākaukino me ngā kawatau ngoikore, ā, e pēhea ana te pānga mai ki ngā ākonga, ngā kaimahi me ngā whānau</p> <p>Te tautuhi me te urupare ki ngā whaikaha, ngā ahunga whakamua me ngā hiahia, ā, ko ngā wawata o ngā ākonga me ngā whānau</p> <p>Hangaia ngā hononga ki ngā Māori, whakauru i a rātou ki ngā mahi whakatai, tūhono ki a rātou ki te tautoko i te rangatiratanga, me te angitu mātauranga a ngāi Māori hei Māori</p>	<p>Whakamahia te pūtea ka whakaritea e te Tāhuhu o te Mātauranga ki te whakaheke i ngā utu mātua me te whakatika i ngā utu mātua me te whakatika i te kai, ngā kākahu me te iiki, ā, tautoko i ngā whānau Māori me ngā whānau nō te Moana-nui-a-Kiwa ki te tono mō te pūtea e wātea ana hei whakaheke i ngā utu o te akoranga kōhungahunga</p> <p>Ka whakatūturu e haumarua ana, e whai wāhi ana ngā ākonga me ngā kaimahi, te hunga hiahia akoranga tauroko, me ngā ākonga hinengaro kanorau ki tō rātou ratonga kōhungahunga, ā, e tautokohia ana ō rātou hiahia</p> <p>Mahi tahi ki ngā whānau Māori me ngā whānau Moana-nui-a-Kiwa ki te tautuhi me te mārama ki ngā tauārai ka aukati pea i ngā ākonga ki te whakauru me te whai wāhi ki te akoranga kōhungahunga</p>	<p>Ka hanga i runga i te akoranga reo, reo matatini, me ngā tikanga pāngarau e wheako ana ngā ākonga i roto i ō rātou kāinga, i ō rātou hāpori rānei, tae atu ki ngā kāinga reo rua, reo maha rānei, me te uara i te mātauranga ahurea e mau nei ia tamaiti me tana whānau ki te mātauranga reo</p> <p>Whakarato i ngā kōwhiringa maha mō te pāhekohekotanga me te kōrerorerotanga - te kōrerorero auau takitahi, ki ngā rōpū iti o ngā ākonga rānei me te whakamahi i ngā kupu tautuhi, te pānui ngātahi i ngā pūrākau, te tākaro i ngā kēmu ā-waha, te waiata rānei i ngā waiata ki te tautoko i tō rātou whanaketanga reo; me te whakauru i ngā kōwhiringa auau mō ngā ākonga ki te hōpara i ngā tohu nō tō rātou ahurea me tō ētahi atu, tae atu ki ngā tohu pāngarau</p> <p>Whakarato i te ōritetanga o ngā kaiako, kaiwhakaako me ngā kaitiaki, kia whakawhanake ngā ākonga tamariki i te piritahi me ngā hononga pai ki te tautoko i te akoranga me te oranga</p>	<p>Kimi i te kupu āwhina nō ngāi Māori me pēhea te whakauru i te tikanga Māori ki ngā uara, ngā tikanga me te ahurea whakahaere</p> <p>Whakarato i ngā kōwhiringa mō ngā kaiako me ngā kaiwhakaako ki te hanga i tō rātou āheitunga ako, mātauranga me ngā pūkenga i roto i te reo Māori me ngā tikanga Māori, me te tautoko i a rātou ki te whakakaha i ā rātou tikanga whakaako ki te pāhekoheko i te reo Māori puta noa i te whakatinanatanga o te marautanga</p> <p>Kōrero tahi me ngā ākonga me ngā kaimahi he aha e hira ai te whakahaere tika i te reo Māori, ā, me te whakarato i a rātou ki ngā kōwhiringa ki te ako me te whakaharatau me te kore whakatai</p>	<p>Tautuhi i ngā āputa ki te āheitunga ako me te haumi ki ngā kōwhiringa mō ngā kaiako, ngā kaiwhakaako me ngā kaimahi ki te whakakaha i te ako, te hautūtanga me te tautoko akoranga</p> <p>Whakawhanake i te māia me te āheinga kaiako ki te whakaako ki ngā ākonga kanorau me ngā hiahia rerekē, me te whakarerekē tika i ngā ara whakaako</p> <p>Ka kawatau me te tautoko i ngā kaiako ki te hanga i tō rātou māramatanga ki ngā horopaki ākonga, tae atu ki ngā reo ka kōrerotia ki te kāinga, ngā hītori, ngā pūrākau me ngā uara ahurea, ki te whakarato i te akoranga urupare ahurea</p>	<p>Kāore he mahi mā ngā ratonga kōhungahunga</p>
---	---	--	--	--	--	--

# Whakatinanatanga o te Tauākī o Ngā Kaupapa Matua ā-Motu mō te Mātauranga me te Ako i roto i ngā ratonga akoranga kōhungahunga (e haere tonu ana)

## WHĀINGA 1

### KO NGĀ ĀKONGA TE IHO

Kei te iho o te mātauranga ngā ākonga me ō rātou whānau

## WHĀINGA 2

### KĀORE HE TAUĀRAI I ROTO I TE MĀTAURANGA

Ka taea ngā whai wāhitanga me ngā putanga rawe mō ia ākonga

## WHĀINGA 3

### NGĀ WHAKAAKORANGA ME TE HAUTŪTANGA KOUNGA

He tino whaitake ngā whakaakoranga me te hautūtanga kounga mō ngā ākonga me ō rātou whānau.

## WHĀINGA 4

### TE ANAMATA O TE AKO ME TE MAHI

Ngā akoranga e hāngai ana ki ngā ao o ngā tāngata o Aotearoa i tēnei rā, ā, puta noa i ō rātou rā

## WHĀINGA 5

### HE MĀTAURANGA TŪMATANUI TAUMATA TIKETIKE Ā-AO

E ponohia ana e toitū ana te mātauranga o Aotearoa



Ko ngā mahi e mahia ana e te Kāwanatanga ki te tautoko i te whakamanatanga o te NELP i roto i ngā ratonga kōhungahunga

1

Me whakatūturu ko ngā wāhi ako he haumaruru, whai wāhi he wātea hoki i te kaikiri, te toihara me te hawene

E whakarato ana i Te Hurihanganui ki te urupare i te kaikiri, whakakaha i te ōritetanga me te whakaterere i te whakatutukitanga akoranga me te oranga mō ngā ākonga Māori me ō rātou whānau

Whakatinana i ngā mahi kua whakaaetia i roto i te Mahere Mahi mō te Mātauranga Moana-nui-a-Kiwa

He haumi me te tautoko i te whanaketanga o ngā hōtaka me ngā ara ako i roto i ngā reo nō Te Moana-nui-a-Kiwa

He tohatoha i te \$50 miriona ki te whakarato i te tautoko wawe mō ngā take akoranga, pāpori me te aaronga, hinengaro, whanonga, oranga rānei mō ngā ākonga i roto i ngā ratonga akoranga kōhungahunga, kura auraki me ngā kura Māori, hei putanga i te rāhui MATE KORONA, ngā uauatanga rānei e pā ana ki te rāhui

Ko te whakatū i ngā Kaiārahi Marautanga ki te tautoko i ngā ratonga akoranga kōhungahunga, kura auraki me ngā kura Māori ki te akoranga i ngā hononga hauora hinengaro me te hauora, ā, me te hāpai i te oranga ākonga

2

Me teitei ngā wawata mō ia ākonga, me te tautoko mā te tūhonohono ki ō rātou whānau, hāpori hoki ki te auaha me te tuku i te mātauranga e urupare ana ki ō rātou hiahia, me te tautū i ō rātou tuakiri, reo, ahurea hoki

Ka haumi ki te akoranga me te whakawhanaketanga ngaio ki te hāpai i te mōhiotanga arohaehae me te tautoko i ngā āheitanga ahurea, tae atu ki Te Hurihanganui

Ka tautoko i ngā ratonga mātauranga ki te whakawhanake i tō rātou āheitanga ki te whakapā atu ki ngā ākonga Māori me ō rātou whānau mā tētahi hononga

Ka whakarato i te hōtaka Talanoa Ako ki te tautoko i ngā whānau nō Te Moana-nui-a-Kiwa

Ka whakawhanake i ngā rauemi akoranga ngaio ka hāngai ki te Tapasā: He pou tarāwaho āheitanga ahurea mō ngā kaiako o ngā ākonga nō Te Moana-nui-a-Kiwa

He tautoko i te whanaketanga o ngā hōtaka me ngā ara ako i roto i ngā reo nō Te Moana-nui-a-Kiwa

Ka whakawhanake i ngā taputapu mō ngā mauhanga hōhono o te ako i hangaia i te taha o ngā ākonga me ō rātou whānau ki te hopu i ngā wawata, ngā kaha me te akoranga ahu whakamua

3

Whakaiti i ngā tauārai ki te mātauranga mō te katoa, tae atu ki ngā ākonga Māori, nō te Moana-nui-a-Kiwa hoki, ngā ākonga hauā me rātou e hiahia ana ki te tautoko akoranga

Ka tautoko i ngā wāhi ako ki te hanga i tō rātou āheitanga ki te tautuhi me te mārama ki ngā hiahia ākonga me ngā tauārai ki te angitu

Ka tuku pūtea mō ngā kaupapa mātauranga Moana-nui-a-Kiwa i auahatia, i whakaratoa hoki/rānei e ngā kaiwhakaaako, me ngā kaiwhakarato mātauranga e urupare ana ki ngā hiahia marautanga me te oranga kua whakakahatia e te MATE KORONA

Ka tuku pūtea ki ngā whakahaere me ngā rōpū hāpori nō Te Moana-nui-a-Kiwa e urupare ana ki ngā hiahia mātauranga me te oranga o ngā whānau nō Te Moana-nui-a-Kiwa, ā, ki te tautoko i a rātou ki te whakapūmau i ngā hononga kaha me ngā kaiwhakarato mātauranga

Ka whakatū i te kaupapa mahi tāhi i waenganui i te Mātauranga, Hauora me te Whakawhanake Pāpori ki te tautoko i ngā whānau nō Te Moana-nui-a-Kiwa ki te uru ki ngā ratonga e hiahia ana rātou ki te puāwai.

Ka arotake i te pūtea hāngai ōrite A me te B mō te taumahatanga i roto i te ECE

Ka whakakaha i te tautuhinga moata o te tautoko akoranga mā te whakawhanake i ngā taputapu araarai

Ka whakaheke i ngā wā tatari mō ngā whakaurunga moata me te Whakapai ake i te whakaurunga moata mō ngā tamariki nohinohi me ō rātou whānau

4

Me whakatūturu ka whiwhi ngā ākonga katoa i ngā pūkenga taketake, tae atu ki te reo, reo matatini me te pāngarau

Ka whakawhanake taputapu ki te tautoko i te māramatanga o ngā kaiako me te pouako ki te whanaketanga akoranga tamariki, tae atu ki te akoranga kōhungahunga, aromatawai urunga ki te kura auraki me ngā kura Māori, me te akoranga pāpori-aaronga i runga i ngā ara

5

Whakauru tūturu i te reo Māori me ngā tikanga Māori ki ngā pito katoa o te ora o te wāhi ako

Ka tohatoha i te \$100 miriona ki te tautoko i te Kōhanga Reo me te whakarauora i te reo Māori

Ka tohatoha i te \$200 miriona ki te tautoko i ngā ākonga Māori me ō rātou whānau ki te tūhono anō me te whakatutuki i roto i te mātauranga i muri iho i te MATE KORONA me te whakakaha i te pāhekohekotanga reo Māori ki ngā akoranga o ngā ākonga katoa

Ka whakakaha i te whakarato o Te Reo Māori i roto i te Mātauranga, tae atu ki te tautoko i te rāngai mahi, whakawhanaketanga rauemi, me ngā mōhiotanga mō ngā ākonga me ō rātou whānau

Ka whakarato i Kauwhata Reo, te pokapū tuihono mō ngā rauemi reo Māori, me te whanaketanga o ngā rauemi marautanga reo Māori mā Te Aho Ngārahu

Ka whakatinana i Ka Hikitia me te whanake i ngā pūkenga me te āheitanga i roto i te rāngai mahi mātauranga

6

Whakawhanake i ngā kaimahi ki te whakakaha i te āheinga tautoko whakaakoranga, hautūtanga me te ākonga huri noa i te rāngai mātauranga

Ka whakawhanui i Te Aho o te reo Māori ki te tautoko i te rāngai mahi mātauranga ki te pāhekoheko i te reo Māori ki roto i ā rātou mahi

Ka whakarato i te akoranga me te whanaketanga ngaio (PLD), ārahitanga me te tautoko ki te whakakaha i te kāwana me te whakahaere o ngā pokapū akoranga kōhungahunga Moana-nui-a-Kiwa

Ka whakawhanui i te PELP (Hinonga Reo Matatini Kōhungahunga Moana-nui-a-Kiwa) me ngā hinonga reo ki te āwhina i ngā kaiako me ngā whānau ki te whanake i te reo me ngā āheitanga reo matatini kōhungahunga mō ngā tamariki nō Te Moana-nui-a-Kiwa

Ka whakapiki i ngā herenga tohu mō ngā kaiwhakaaako ki te kāinga, me te urunga anō o te wāhanga pūtea tohu, i roto i te mātauranga kōhungahunga

Ka tohatoha i te pūtea mō ngā pikinga utu ECE

Ka whakauru anō i te wāhanga pūtea kaiako tohu 100% hei te 1 o Kohitātea i 2021

Ka whakawhanake i te rauemi reo ā-waha ki te tautoko i ngā kaiako kōhungahunga ki te whakanui i te akoranga me te whanaketanga reo ā-waha o ngā tamariki.

7

Mahi tāhi ki ngā ahumahi me ngā kaitukumahi kia whakatūturu e whiwhi ana ngā ākonga ki ngā pūkenga, mātauranga me ngā huarahi kia angitu ki te mahi

Ka tīmata i te mahi tīmātanga ki te hanga ngātahi i te whānuitanga o ngā taputapu ki te āwhina i ngā kaiako kōhungahunga ki te mārama me te urupare ki te ahu whakamua a ngā tamariki

8

Whakakaha i te tāpaetanga o te rangahau me te mātauranga Māori ki te whakatutuki i ngā wero ā-rohe, ā-ao anō hoki (TES ANAKE)

# Whakamanatanga o te Tauākī o Ngā Kaupapa Matua ā-Motu mō te Mātauranga me te Ako i roto i ngā kura auraki me ngā kura Māori



He rōpū kaupapa matua te Tauākī o Ngā Kaupapa Matua ā-Motu mō te Mātauranga me te Ako (te NELP) i auahatia ki te ārahi i a rātou e ārahi ana i ngā kura auraki me ngā kura Māori, (kāwanatanga, pāhekoheko kāwanatanga, me te tūmataiti), ki te arotahi i ā rātou mahi o ia rā ki ngā mea ka tino whai pānga nui ki ngā tamariki me ngā taiohi. Ka āhei ngā kaupapa matua te whakamahi i te taha o ā rātou ake kaupapa matua, ā, tāpiri atu ki te whakarato i te marautanga hōhonu ā-rohe, ki te āwhina i ngā ākonga katoa ki te ahu whakamua me te whakatutuki i ā rātou wawata.



Me āta whakaaro ngā poari o ngā kura ki te NELP, tae atu ki te whakawhanake, whakahou rānei i ā rātou tūtohunga, hei tauira mā te whakatūturu te tīaroaro o ngā whāinga rautaki ki ngā kaupapa matua o te NELP.

Me aro ngā kaiwhakahaere kura tūmataiti ki te NELP i roto i te whakahaere o tō rātou kura, me te whakatūturu e aro ana te tumuaki o te kura me ngā kaimahi ki te NELP ina e whakawhanake ana, ā, e whakarato ana i te marautanga.

Hei te 1 o Kohitātea ka whakakapia ngā Whāinga Mātauranga ā-Motu me ngā Aratohu Whakahaere ā-Motu (NAGs) e tētahi pou tarāwaho whakamahere rautaki me te pūrongo hou. He hononga mārama tō te pou tarāwaho nei ki te NELP, ā, me pūrongo e ngā rōpū kāwana ki tō rātou whai wāhi ki ngā kaupapa matua i roto i ā rātou mahere rautaki. Ka whakarato ētahi atu mōhiohio e pā ana ki tēnei ina tata ana ki taua wā.

WHĀINGA 1	WHĀINGA 2	WHĀINGA 3	WHĀINGA 4	WHĀINGA 5
-----------	-----------	-----------	-----------	-----------

## KO NGĀ ĀKONGA TE IHO

Kei te iho o te mātauranga ngā ākonga me ā rātou whānau

## KĀORE HE TAUĀRAI I ROTO I TE MĀTAURANGA

Ka taea ngā whai wāhitanga me ngā putanga rawe mō ia ākonga

## NGĀ WHAKAAKORANGA ME TE HAUTŪTANGA KOUNGA

He tino whaitake ngā whakaakoranga me te hautūtanga kounga mō ngā ākonga me ā rātou whānau.

## TE ANAMATA O TE AKO ME TE MAHI

Ngā akoranga e hāngai ana ki ngā ao o ngā tāngata o Aotearoa i tēnei rā, ā, puta noa i ā rātou rā

## HE MĀTAURANGA TŪMATANUI TAUMATA TIKETIKE Ā-AO

E ponohia ana, e toitū ana te mātauranga o Aotearoa



Ngā mahi ngā kura auraki me ngā kura Māori

<p><b>1</b></p> <p>Me whakatūturu ko ngā wāhi ako he haumaruru, whai wāhi he wātea hoki i te kaikiri, te toihara me te hawene</p>	<p><b>2</b></p> <p>Me teitei ngā wawata mō ia ākonga, me te tautoko mā te tūhonohono ki ā rātou whānau, hapori hoki ki te auaha me te tuku i te mātauranga e urupare ana ki ā rātou hiahia, me te tautīnei i ā rātou tuakiri, reo, ahurea hoki</p>	<p><b>3</b></p> <p>Whakaiti i ngā tauārai ki te mātauranga mō te katoa, tae atu ki ngā ākonga Māori, nō te Moana-nui-a-Kiwa hoki, ngā ākonga hauā me ā rātou e hiahia ana ki te tautoko akoranga</p>	<p><b>4</b></p> <p>Me whakatūturu ka whiwhi ngā ākonga katoa i ngā pūkenga taketake, tae atu ki te reo, reo matatini me te pāngarau</p>	<p><b>5</b></p> <p>Whakauru tūturu i te reo Māori me ngā tikanga Māori ki ngā pito katoa o te ora o te wāhi ako</p>	<p><b>6</b></p> <p>Whakawhanake i ngā kaimahi ki te whakakaha i te āheinga tautoko whakaakoranga, hautūtanga me te ākonga huri noa i te rāngai mātauranga</p>	<p><b>7</b></p> <p>Mahi tahi ki ngā ahumahi me ngā kaitukumahi kia whakatūturu e whiwhi ana ngā ākonga ki ngā pūkenga, mātauranga me ngā huarahi kia angitu ki te mahi</p>	<p><b>8</b></p> <p>Whakakaha i te tāpaetanga o te rangahau me te mātauranga Māori ki te whakatutuki i ngā wero ā-rohe, ā-ao anō hoki (TES ANAKE)</p>
---	--	--	---	---	---	--	--

<p>Pātai ki ngā ākonga, ngā whānau me ngā kaimahi mō ā rātou wheako o te kaikiri, te ngākaukino me te hawene, ā, whakamahia aua mōhiohio ki te whakaiti i ēnei whanonga</p> <p>Me whakarite i ngā tukanga kia urupare wawe me te whakatika i ngā amuamu, āwangawanga rānei mō te kaikiri, ngākaukino me te hawene</p> <p>Hangaia te ahurea haumaruru, whakauru hoki e uaratia ana te kanorautanga, ā, ko ngā ākonga me ngā kaimahi katoa, tae atu ki ā rātou e tautuhi ana hei LGBTQIA+, e hauā ana, he hiahia tautoko akoranga, he hinengaro kanorau, nō ngā hapori mātāwaka kanorau e whakaaro ana e whai wāhi ana ā rātou ki reira</p>	<p>Mahi tahi me ngā whānau me ngā whānau ki te whakaāhei i ngā ākonga katoa ki te hanga me te whakatutuki i ā rātou wawata</p> <p>Āwhinatia ngā kaimahi ki te hanga i te mōhiotanga o te ngākaukino me ngā kawatau ngoikore, ā, e pēhea ana te pānga mai ki ngā ākonga, ngā kaimahi me ngā whānau</p> <p>Te tautuhi me te urupare ki ngā whaikaha, ngā ahunga whakamua me ngā hiahia, ā, ko ngā wawata o ngā ākonga me ngā whānau</p> <p>Hangaia ngā hononga ki ngā Māori, whakauru i a rātou ki ngā mahi whakatau, tūhono ki a rātou ki te tautoko i te rangatiratanga, me te angitu mātauranga a ngāi Māori hei Māori</p> <p>Mahi tahi me ngā hapori Māori ki te haumi, whakawhanake me te whakarato i ngā akoranga mā te reo Māori</p>	<p>Mahi tahi ki ngā whānau Māori me ngā whānau Moana-nui-a-Kiwa ki te tautuhi me te mārama ki ngā tauārai ka aukati pea i ngā ākonga ki te whakauru, te whai wāhi, te noho rānei ki te akoranga, me te mahi ki te kaupare i aua tauārai</p> <p>Ka whakatūturu e haumaruru ana, e whai wāhi ana ngā ākonga me ngā kaimahi, te hunga hiahia akoranga tautoko, ngā ākonga koi, me ngā ākonga hinengaro kanorau ki tō rātou kura auraki, kura Māori rānei, e tautokohia ana ā rātou hiahia, ā, e pūmau ana me te whakaaweawe ngā hōtaka akoranga tautoko</p> <p>Ina āhei ana, whakaheke i ngā utu ehara mō te utu kura, tae atu ki ngā utu e pā ana ki ngā kaupapahere BYOD<sup>2</sup> me te whiwhi hua i ngā kaupapahere whakaheke i te whakawhirinaki ā-ahumoni ki ngā whānau me ngā whānau</p>	<p>Me whakatūturu e whai ana ngā ākonga katoa i ngā kōwhiringa ki te whakawhanake i ngā āheitanga matua tae atu ki te whakawhiwhiti kōrero, whakatau tūraruru, whakaaro arohaehae me ngā pūkenga pāpori</p> <p>Tautuhi i ngā ākonga kāore i te tino whanake i ngā pūkenga taketake matua, me te whakarerekē i ngā kōwhiringa ako, ngā ara whakaako me ngā tautoko, tae atu ki te kimi i te tautoko anō i ngā mātanga</p> <p>Me uara i ngā reo tuku iho e kōrerotia ana e ngā ākonga nō te Moana-nui-a-Kiwa, me te whakarato i ngā āheinga ki te whakamahi me te whakawhanake</p>	<p>Kimi i te kupu āwhina nō ngāi Māori me pēhea e whakauru i te tikanga Māori ki ngā uara, ngā tikanga me te ahurea whakahaere</p> <p>Whakamahi i ngā āheinga whakawhanake mō ngā kaiako me ngā kaihautū ki te whakawhanake i ā rātou āheitanga whakaako, mātauranga me ngā pūkenga ki te reo me ngā tikanga Māori</p> <p>Kōrero tahi me ngā ākonga me ngā kaimahi he aha e hira ai te whakahua tika i te reo Māori, ā, me te whakarato i a rātou ki ngā kōwhiringa ki te ako me te whakaharatau me te kore whakatau</p>	<p>Tautuhi i ngā āputa ki te āheitanga ako me te haumi ki ngā kōwhiringa mō ngā kaiako me ngā kaimahi ki te whakakaha i te ako, te hautūtanga me te tautoko akoranga</p> <p>Whakawhanake i te māia me te āheinga kaiako ki te whakaako ki ngā ākonga kanorau me ngā hiahia rerekē, me te whakarerekē tika i ngā ara whakaako</p> <p>Ka kawatau me te tautoko i ngā kaiako ki te hanga i tō rātou māramatanga ki ngā horopaki ākonga, tae atu ki ngā reo ka kōrerotia ki te kāinga, ngā hītori, ngā pūrākau me ngā uara ahurea, ki te whakarato i te akoranga urupare ahurea</p>	<p>Ka tautoko i ngā ākonga kia kite i te tūhonotanga i waenganui i ngā kaupapa e ako ana ā rātou me te ao mahi</p> <p>Turakina ngā whakaaro kōhatu mō te mātāwaka, ira me te pāpori ohaoha e pā ana ki te mātauranga me ngā ara umanga, tae atu ki ngā kōtiro me ngā taitamawahine</p> <p>Mahi tahi me ngā umanga, kaituku mahi me ngā kaiwhakarato mātauranga matua ki te whakamahere mō ngā whakawhirinaki angitu kia taea ai ngā ākonga katoa te whakatutuki i roto i te mātauranga</p>
---	---	--	--	--	---	--

<sup>2</sup> Mau mai i tō ake pūrere.



# Whakatinatanga o te Tauākī o Ngā Kaupapa Matua ā-Motu mō te Mātauranga me te Ako i roto i ngā kura auraki me ngā kura Māori (e haere tonu ana)

## WHĀINGA 1

### KO NGĀ ĀKONGA TE IHO

Kei te iho o te mātauranga ngā ākonga me ō rātou whānau

## WHĀINGA 2

### KĀORE HE TAUĀRAI I ROTO I TE MĀTAURANGA

Ka taea ngā whai wāhitanga me ngā putanga rawe mō ia ākonga

## WHĀINGA 3

### NGĀ WHAKAAKORANGA ME TE HAUTŪTANGA KOUNGA

He tino whaitake ngā whakaakoranga me te hautūtanga kounga mō ngā ākonga me ō rātou whānau

## WHĀINGA 4

### TE ANAMATA O TE AKO ME TE MAHI

Ngā akoranga e hāngai ana ki ngā ao o ngā tāngata o Aotearoa i tēnei rā, ā, puta noa i ō rātou rā

## WHĀINGA 5

### HE MĀTAURANGA TŪMATANUI TAUMATA TIKETIKE Ā-AO

E ponohia ana, e toitū ana te mātauranga o Aotearoa

Ko ngā mahi e mahia ana e te Kāwanatanga ki te tautoko i te whakamanatanga o te NELP i roto i ngā kura auraki me ngā kura Māori

1

Me whakatūturu ko ngā wāhi ako he haumaruru, whai wāhi he wātea hoki i te kaikiri, te toihara me te hawene

E whakarato ana i Te Hurihanganui ki te urupare i te kaikiri, whakakaha i te ōritetanga me te whakakaha i te whakatutukitanga akoranga me te oranga Māori

Whakatinana i ngā mahi kua whakaaetia i roto i te Mahere Mahi mō te Mātauranga Moana-nui-a-Kiwa

He haumi me te tautoko i te whanaketanga o ngā hōtaka me ngā ara ako i roto i ngā reo nō Te Moana-nui-a-Kiwa

Whakahou i te Education Act kia mārama ai he whāinga matua te whakarato i te taiao haumaruru ā-aorongo, ā-tinana hoki mō ngā poari kura

Whakaturhia te tikanga whanonga mō ngā poari kura ki te tautoko i te kāwana pai

Ka whakarato i ngā tāputapu me te ārahitanga, pērā i te keteparaha Not Part of My World, ki te aukati me te whakakore i te kaikiri

Ka whakahou i ngā Aratohu Mātauranga Ira me te Hononga i roto i te Marautanga Kura Auraki o Aotearoa

E whakangao ana i te \$78.5 miriona i te paunga o ngā tau e whā kia utu i te āheinga anō ki ngā ratonga tautoko hauora me te oranga hinengaro mō ngā ākonga kei ngā kura tuatahi me ngā kura tuarua

He tohatoha i te \$50 miriona ki te whakarato i te tautoko wawe mō ngā take oranga rānei mō ngā ākonga i roto i ngā ratonga akoranga kōhungahunga, kura auraki me ngā kura Māori, hei putanga i te rāhui MATE KORONA, ngā uauatanga rānei e pā ana ki te rāhui

Ka mahi tahi me Netsafe ki te whakarato i te Hōtaka Kura o Netsafe

Ka tautoko i te hāpaitanga pāhomatarau Keep It Real Online

Ka whakarato i ngā rauemi mō ngā kaiako mā te keteparaha The Respectful Relationships

Ko te whakatū i ngā Kaiārahi Marautanga ki te tautoko i ngā ratonga akoranga kōhungahunga, kura auraki me ngā kura Māori ki te akoranga i ngā hononga hauora hinengaro me te hauora, ā, me te hāpai i te oranga ākonga

2

Me teitei ngā wawata mō ia ākonga, me te tautoko mā te tūhonohono ki ō rātou whānau, hapori hoki ki te auaha me te tuku i te mātauranga e urupare ana ki ō rātou hiahia, me te tautū nei i ō rātou tuakiri, reo, ahurea hoki

Ka haumi ki te akoranga me te whakawhanaketanga ngaio ki te hāpai i te mōhiotanga arohaehae me te tautoko i ngā āheitinga ahurea, tae atu ki Te Hurihanganui

Ka whakatinana i Toikuranui ki te whanake ki ngā Hinonga ā-rohe me ngā iwi, ā, me te Pae Aronui ki te tautoko i ngā rangapū hira i waenganui i ngā ratonga whānau me te mātauranga

Ka whakarato i ngā kaupapa matua ā-rohe PLD, me te arotahi ki te matatau ahurea, te whakaurunga me te mōhiotanga arohaehae

Ka whakawhanake i ngā rauemi akoranga ngaio ka hāngai ki te Tapasā: He pou tarāwaho āheitinga ahurea mō ngā kaiako o ngā ākonga nō te Moana-nui-a-Kiwa

Ka whakarato i te hōtaka Talanoa Ako ki te tautoko i ngā whānau nō te Moana-nui-a-Kiwa

He tautoko i te whanaketanga o ngā hōtaka me ngā ara ako i roto i ngā reo nō Te Moana-nui-a-Kiwa

Whakahou i te Education Act kia herea ngā poari kaitiaki ki te whakawhaka i Te Tiriti o Waitangi hei tētahi o ō rātou whāinga matua

Ka whakawhanake i ngā taputapu mō ngā mauhanga hōhono o te ako hei hopu i ngā wawata, ngā mea kaha me te ahu whakamua ki te ako

Ka whakawhanake i te mahere tautoko akoranga ā-motu ki te tautoko i ngā ākonga me ngā hiahia tāpiri ki te whakawhiti i roto i te mātauranga

Ka whakakaha i te ara reo Māori me te rangapū ki ngāi Māori ki te whakatūturu e urupare ana te pūnaha mātauranga ki te tutuki i ngā hiahia me ngā wawata o ngā ākonga Māori me tō rātou whānau

Ka whakawhanake i te mahere tautoko akoranga ā-motu ki te tautoko i ngā ākonga me ngā hiahia tāpiri ki te whakawhiti i roto i te mātauranga

Whakahou i ngā Marautanga Auraki ā-Motu kia whakaakohia ngā hītori o Aotearoa i roto i ngā kura auraki me ngā kura Māori

Ka whakakaha i te tautoko a te Marautanga Auraki o Aotearoa i te whakarewatanga o Te Tiriti o Waitangi i roto i te marautanga ā-rohe

3

Whakaiti i ngā tauārai ki te mātauranga mō te katoa, tae atu ki ngā ākonga Māori, nō te Moana-nui-a-Kiwa hoki, ngā ākonga hauā me rātou e hiahia ana ki te tautoko akoranga

Ka tuku pūtea mō ngā kaupapa mātauranga auaha Moana-nui-a-Kiwa e urupare ana ki ngā hiahia mātauranga me te oranga kua whakakahatia e te MATE KORONA

Ka tuku pūtea ki ngā whakahaere me ngā rōpū hapori nō te Moana-nui-a-Kiwa e urupare ana ki ngā hiahia mātauranga me te oranga o ngā whānau nō te Moana-nui-a-Kiwa me te autoko i ngā hononga kaha me ngā kaiwhakarato mātauranga

Ka whakatū i te kaupapa mahi tahi i waenganui i te Mātauranga, Hauora me te Whakawhanake Pāpori ki te tautoko i ngā whānau nō te Moana-nui-a-Kiwa ki te uru ki ngā ratonga e hiahia ana rātou ki te puāwai

Whakahou i te Ture Mātauranga ki te whakatinana i te tūnga o ngā paewhiri whakatau raruraru

Whakahou i te Ture Mātauranga ki te neke i te herenga mō te whakawhanaketanga me te akoako o te ngā hinonga whakaurunga ki te Tāhuhu o te Mātauranga

Te Hinonga Koha ā-Kura

NCEA me te kore utu

Hōtaka Tina i te Kura

He āheinga koreutu ki ngā otinga kope

He Rautaki Rawa i te Kura 2030

He arotake i te akoranga kē, ā, me ngā aratohu whakaheke, pana wā poto, whakanoho wāhi kē me te pana atu (SSEE)

He arotake i ngā tautoko onāiane me ngā tamariki me ngā rangatahi he hiahia nui ō rātou, ā, mā te tino whai wāhi ki te Tauria Whakarato Tautoko Akoranga

Ka tautoko i ngā kura auraki me ngā kura Māori ki te whakatūturu ka taea ngā tohu me ngā whakawhiwhinga tika e ngā ākonga katoa

Panoni NCEA: Ngā Āhuatanga Aromatawai Motuhake

Ka tautoko i ngā ara akoranga kura tuarua/matua mārama, whakatutukitanga, me te whakawhiwhinga ki te mahi

4

Me whakatūturu ka whiwhi ngā ākonga katoa i ngā pūkenga taketake, tae atu ki te reo, reo matatini me te pāngarau

Ka whakarato i te akoranga reo Māori tino kounga, tae atu ki te whakawhanake i te Rautaki Rānga Mahi Karihi e Mahere Tūhonotanga, me te arotake i te nui o ngā pūtea.

Ka whakatūria tētahi Pokapū Marautanga ā-motu kia tautoko i te whakarato whakaaweawe o te Te Marautanga Auraki o Aotearoa me Te Marautanga o Aotearoa

Ka whakawhanake taputapu ki te tautoko i te māramatanga o ngā kaiako me te pouako ki te whanaketanga akoranga tamariki, tae atu ki te akoranga kōhungahunga, aromatawai urunga ki te kura auraki me ngā kura Māori, me te akoranga pāpori-aorongo i runga i ngā ara

Ka tautoko i te whakatinanatanga o te marautanga hangarau matihiko

Whakahou i te Marautanga Auraki o Aotearoa me Te Marautanga o Aotearoa kia mārama ai he hira rawa te akoranga kia kaua e waiho mā te tūponotanga

Whakatinana i te Pūhera Panoni NCEA ki te whakakaha i te reo matatini me ngā herenga pāngarau, ā, ki te whakakaha i ngā tautoko i runga i ngā ara

5

Whakauru tūturu i te reo Māori me ngā tikanga Māori ki ngā pito katoa o te ora o te wāhi ako

Ka tohatoha i te \$200 miriona ki te tautoko i ngā ākonga Māori me ō rātou whānau ki te tūhono anō me te whakatutuki i roto i te mātauranga i muri iho i te MATE KORONA me te whakakaha i te pāhekohekotanga reo Māori ki ngā akoranga o ngā ākonga katoa

Ka whakakaha i te whakarato o te reo Māori i roto i te Mātauranga, tae atu ki te tautoko i te rāngai mahi, whakawhanaketanga rauemi, me ngā mōhiotanga mō ngā ākonga me ō rātou whānau

Ka whakarato i Kauwhata Reo, te pokapū mō ngā rauemi reo Māori, me te whanaketanga o ngā rauemi marautanga reo Māori mā Te Aho Ngārahu

Whakahou i te Ture Mātauranga kia herea ngā poari kura ki te whakapau kaha e tika ana ki te whakarato i Te Reo Māori

Ka whakatinana i Ka Hikitia me te whanake i ngā pūkenga me te āheitinga i roto i te rāngai mahi mātauranga

Mahi tahi me ngā kaihautū reo Māori ki te haumi ki ngā ara reo Māori

Whakakaha i te whakaata a Te Marautanga o Aotearoa i ngā ara ao Māori ki te mātauranga me te whakaata tonu i ngā mea nui ki tā te Māori mō ā rātou tamariki, taiohi hoki

Ka whakatinana i te Pūhera Panoni NCEA ki te tautoko i te ōritetanga mō te mātauranga Māori me ngā kōwhiringa e piki ana ki te whai i ngā ara reo Māori

6

Whakawhanake i ngā kaimahi ki te whakakaha i te āheinga tautoko whakaakoranga, hautūtanga me te ākonga huri noa i te rāngai mātauranga

Ka whakawhānui i Te Aho o te reo Māori ki te tautoko i te rāngai mahi mātauranga ki te pāhekoheko i te reo Māori ki roto i ā rātou mahi

Ka whakawhānui i te whakarato o Tautai o le Moana, he mahinga ngātahi hautūtanga akoranga e kimi ana ki te whakakaha i ngā āheitinga o rātou e hautū ana, ki te whakapai ake i ngā putanga, ā, me te tautoko i te oranga o ngā ākonga nō te Moana-nui-a-Kiwa

Whakarato i ngā Whakawhanake i ngā Hapori Pāngararu o te Rangahau (DMICS) i runga i te taunaki, e hāngai ana, me te whakakaha i ngā āheitinga ki ngā kura me te tokomaha o ngā ākonga nō te Moana-nui-a-Kiwa

Ka whakauru i ngā tikanga ki te whakapai ake i ngā pūkenga o ngā kaitiaki o ngā poari kura me te noho haepapa, tae atu ki te whakangungu whakature me te tikanga whanonga

He kupu āwhina mō te whakakaha i ngā tūhonotanga mahi tahi puta noa i te pūnaha, tae atu ki ngā panoni ki Kāhui Ako

Ka whakamana i te paearu māraurau tumuaki

Whakatū i tētahi Pokapū Hautū ki roto i te Matatū Aotearoa

Ka whakahou anō i ngā kaupapa matua ā-motu mō te PLD ki te arotahi ki ngā āheitinga marautanga iho me ngā ara aromatawai e whakamana ana i te pūnaha whakauru me te ōrite

Ka whakarato i te pūtea mō ngā kaiāwhina kaiako ki te uru ki te akoranga ngaio

7

Mahi tahi ki ngā ahumahi me ngā kaitukumahi kia whakatūturu e whiwhi ana ngā ākonga ki ngā pūkenga, mātauranga me ngā huarahi kia angitu ki te mahi

Ka whakawhanake i ngā taputapu me ngā mōhiotanga ki te tautoko i ngā ākonga kia whai i te ara umanga whaiaro e tuku ai i ā rātou ki te whakawhiti i waenganui i te mātauranga me te whai mahi, me te tautoko i ngā kaimahi tūnga kore

Whakatinana i te Pūhera Panoni NCEA ki te whakakaha i ngā ara akoranga mō ngā ākonga, me te tautoko i tō rātou whakawhitinga ki ētahi atu akoranga me te whai mahi

Ka tautoko i ngā ākonga i muri i te kura mā te Keteparaha Ākonga Wehe Kura

Ka uara i ngā ara mātauranga mahi mā te whakawhiwhi i ngā Whakawhiwhinga Mātauranga Mahi a te Pirimia

8

Whakakaha i te tāpaetanga o te rangahau me te mātauranga Māori ki te whakatutuki i ngā wero ā-rohe, ā-ao anō hoki (TES ANAKE)



# Te Whakatinanatanga o te Rautaki Mātauranga Matua



Ka whakatakoto te Rautaki Mātauranga Matua (TES) i ngā kaupapa matua onāiane, o te wā waenga hoki, a te Kāwanatanga, me te ahunga rautaki karioi mō te mātauranga matua. Ko te whakaaro ka uruparetia ngā whāinga ohaoha, pāpori me te taiao, me ngā wawata whakawhanake o ngā Māori me ētahi atu rōpū taupori. Kua whakawhanakehia tēnei TES i muri i te akoako i te mutunga o te tau 2019 me te umanga mātauranga matua me ētahi atu kaiwhaipānga i runga i te TES hukihuki i whakatakotohia ki te tuinga kōrerorero Shaping a Stronger Education System with New Zealanders.



Ka herea Te Amorangi Mātauranga Matua e te Ture Mātauranga me te Whakangungu ki te whakamana i te TES mā te tukanga haumi. I raro i tēnei, e noho haepapa ana te TEC ki te pānui i te ārahitanga mō te ihirangi me ngā paearu mō te aromatawai o ngā mahere haumi o ngā Rōpū Mātauranga Tuatoru (ngā TEO), me te whakarite me te tohatoha i te nui o te pūtea ki ngā TEO. He mahi tā te TEC ki te whakawhanake i te āheitanga o ngā TEO hei wāhanga o te whakaaweawe i te TES. I te whakamahinga o ērā atu o ana mahi, me tiro te TEC ki te TES – arā me ōrite ngā mahi o te TEC i waho atu o te tukanga whakamahaere haumi ki ngā kaupapa matua me te ahunga i whakaritea i roto i te TES.

Ka herea te Mana Tohu Mātauranga o Aotearoa e te Education and Training Act 2020 ki te tiro ki te TES. Ko te tikanga o tēnei ko ngā mahi a te NZQA, tae atu ki ana mahi whakarata kouna, me ōrite ki ngā kaupapa matua me te ahunga i whakaritea i roto i te TES.

Ko ngā TEO e herea ana ki te tautuhi i roto i ngā mahere haumi marohi me pēhea rātou e whakaaweawe ai i ngā kaupapa matua a te Kāwanatanga onāiane, o te wā waenga hoki, pērā i te tautuhinga i roto i te TES. Ko te tikanga me whakaaro ngā TEO me pēhea rātou e whakaata ai i ngā kaupapa matua TES i roto i ō rātou kaupapahere me ngā tikanga, me te whakamōhio i te TEC mō tēnei mā ō rātou mahere haumi.

WHĀINGA 1	WHĀINGA 2	WHĀINGA 3	WHĀINGA 4	WHĀINGA 5
-----------	-----------	-----------	-----------	-----------

## KO NGĀ ĀKONGA TE IHO

Kei te iho o te mātauranga ngā ākonga me ō rātou whānau

## KĀORE HE TAUĀRAI I ROTO I TE MĀTAURANGA

Ka taea ngā whai wāhitanga me ngā putanga rawe mō ia ākonga

## NGĀ WHAKAAKORANGA ME TE HAUTŪTANGA KOUNGA

He tino whaitake ngā whakaakoranga me te hautūtanga kouna mō ngā ākonga me ō rātou whānau

## TE ANAMATA O TE AKO ME TE MAHI

Ngā akoranga e hāngai ana ki ngā ao o ngā tāngata o Aotearoa i tēnei rā, ā, puta noa i ō rātou rā

## HE MĀTAURANGA TŪMATANUI TAUMATA TIKETIKE Ā-AO

E ponohia ana, e toitū ana te mātauranga o Aotearoa



Ngā Mahi a Ngā Whakahaere Mātauranga Matua

<p><b>1</b></p> <p>Me whakatūturu ko ngā wāhi ako he haumarū, whai wāhi he wātea hoki i te kaikiri, te toihara me te hawene</p>	<p><b>2</b></p> <p>Me teitei ngā wawata mō ia ākonga, me te tautoko mā te tūhonohono ki ō rātou whānau, hapori hoki ki te auaha me te tuku i te mātauranga e urupare ana ki ō rātou hiahia, me te tautū nei i ō rātou tuakiri, reo, ahurea hoki</p>	<p><b>3</b></p> <p>Whakaiti i ngā tauārai ki te mātauranga mō te katoa, tae atu ki ngā ākonga Māori, nō te Moana-nui-a-Kiwa hoki, ngā ākonga hauā me rātou e hiahia ana ki te tautoko akoranga</p>	<p><b>4</b></p> <p>Me whakatūturu ka whiwhi ngā ākonga katoa i ngā pūkenga taketake, tae atu ki te reo, reo matatini me te pāngarau</p>	<p><b>5</b></p> <p>Whakauru tūturu i te reo Māori me ngā tikanga Māori ki ngā pito katoa o te ora o te wāhi ako</p>	<p><b>6</b></p> <p>Whakawhanake i ngā kaimahi ki te whakakaha i te āheinga tautoko whakaakoranga, hautūtanga me te ākonga huri noa i te rāngai mātauranga</p>	<p><b>7</b></p> <p>Mahi tahi ki ngā ahumahi me ngā kaitukumahi kia whakatūturu e whiwhi ana ngā ākonga ki ngā pūkenga, mātauranga me ngā huarahi kia angitu ki te mahi</p>	<p><b>8</b></p> <p>Whakakaha i te tāpaetanga o te rangahau me te mātauranga Māori ki te whakatutuki i ngā wero ā-rohe, ā-ao anō hoki (TES ANAKE)</p>
<p>Te whakatūturu mai ko ngā kaupapahere me ngā mahere pakari kua whakaritea hei whakatūtuki i te kaikiri, whakatoihara me ngā tūmanako pāpaku e whakapā ana ki ngā kaimahi, ngā ākonga me ō rātou whānau</p> <p>Arotake, whakawhānui me te whakakaha i ngā tikanga onāiane ki te rongu me te mahi mō te reo ākonga, me te mārama ki ngā tirohanga o ngā whānau me ngā hapori</p> <p>Whakarato i te taiao akoranga haumarū me te tautoko e whai wāhi ana ki te tautoko i ngā hiahia waiwai o ngā ākonga me tō rātou hauora ā-tinana, ā-hinengaro hoki</p>	<p>Whakawhanake i te ara whakahaere katoa ki te mārama me te tutuki i ngā hiahia me ngā wawata o ngā ākonga katoa</p> <p>Whakawhanake i ngā āheitanga kaimahi ki te tautoko i ngā tikanga whakaako me te ako e uara ana i ngā reo, ngā ahurea me ngā tuakiri</p> <p>Hangaia ngā hononga ki ngāi Māori, whakauru i a rātou ki ngā mahi whakatau, tūhono ki a rātou ki te tautoko i te rangatiratanga, me te angitu mātauranga a ngāi Māori hei Māori</p>	<p>Ka mahi tahi me ngā kura, ngā whānau, ngā whānau o te Moana-nui-a-Kiwa, ngā hapori me ngā umanga ki te whakamahere mō ngā whakawhitinga angitu mō ngā ākonga katoa kia angitu ai i roto i te mātauranga me te whakangungu</p> <p>Ka āta tautuhi me te whakaheke i ngā tauārai mō ngā ākonga katoa, me te tautoko i a rātou ki te whakauru ki te akoranga me te whakatutuki i ngā putanga angitu i te mātauranga me te whiwhi mahi</p> <p>Ina āhei ana, whakaheke i ngā utu ehara mō te utu kura me te whiwhi hua i ngā kaupapahere whakaheke i te whakawhirinaki ā-ahumoni ki ngā whāmere me te whānau.</p> <p>Whakatūturu ko ngā kaupapahere, mahere me te tautoko kaha kua whakaritea ki te tautoko i ngā ākonga hauā me ngā ākonga hinengaro kanorau kia angitu ai</p>	<p>Whakatūturu ka taea e ngā ākonga katoa te uru ki ngā āheinga i roto i ō rātou hapori, wāhi mahi, i a rātou e ako ana rānei ki tētahi TEO ki te whakawhanake i tō rātou reo matatini me ngā matatau pāngarau</p> <p>Tautoko i ngā ākonga ki te whakawhanake i ngā pūkenga reo matihiko hāngai kia taea ai e rātou ki te ako</p> <p>Me whakatūturu e whai ana ngā ākonga katoa i ngā kōwhiringa ki te whakawhanake i ngā āheitanga matua me ngā āhuatanga tae atu ki te whakawhitiwhiti kōrero, whakatau tūraru, whakaaro arohaehae me ngā pūkenga pāpori</p> <p>Me uara i ngā reo e kōrerotia ana e ngā ākonga nō te Moana-nui-a-Kiwa me ngāi Māori, me te whakarato i ngā āheinga ki te whakamahi me te whakawhanake</p>	<p>Whakapūmau i te Tikanga Māori ki ngā uara, ngā tikanga me te ahurea whakahaere, i runga i te tūhono ki, me te kupu āwhina a, ngāi Māori</p> <p>Whakarato i ngā āheinga ako me te whakawhanake mō ngā kaiwhakaako ki te whakapiki i ō rātou matatau whakaako, mōhiotanga, pūkenga hoki i roto i te reo me ngā tikanga Māori</p> <p>Whakatenatena ki ngā kaihautū ki te whai i ō rātou ake āheinga ako me te whakawhanake kia puta hei tangata kōrero Māori, me te whakapiki i te taumata kōrero</p> <p>Whakatūturu ko ngā rautaki, whanonga, mahi, ngā ratonga me ngā rauemi e whakaata ana i te herenga ki Te Tiriti o Waitangi</p>	<p>Tautuhi i ngā āputa ki te āheitanga ako me te haumi ki ngā kōwhiringa mō ngā kaiwhakaako me ngā kaimahi ki te whakakaha i te ako, te hautūtanga me te tautoko akoranga</p> <p>Ka uara i te kanorautanga ki tō rāngai mahi me te tuku mahi ki ngā kaimahi me te whānuitanga o ngā ao, ngā tuakiri, ngā reo me ngā ahurea ki te whakatipu i te rāngai mahi hei tohu i te kanorautanga o ō ākonga me ō rātou hapori</p>	<p>Whakatūturu e tutuki ana te whakaako me te ako i ngā hiahia o ngā ākonga, ngā kaituku mahi me te umanga, ā, ka whakarato i ngā pūkenga hāngai mō te wāhi mahi</p> <p>Ka tāpae i ngā pūhera ako mahi me ngā ara mārama e tautoko ana i ngā ākonga ki te uru ki ngā putanga mahi hāngai</p> <p>Whakarato i ngā kōwhiringa akoranga mō te tauoranga katoa e tāwariwari ana, kanorau, ā, i te wā tika kia āhei ai ngā tāngata te whai pūkenga me te ako anō puta noa i ō rātou tauoranga</p> <p>Ka tautoko i ngā pūkenga hāngai mō te neke a Aotearoa ki te ohaoha waro ngū</p>	<p>Ka hanga i te rāngai mahi rangahau toitū kanorau me te whakawhānui i te hōpua o te pūmanawa me te mōhiotanga</p> <p>Ka tautoko i te rangahau hiranga me te tāpaetanga o ngā āhuatanga auaha ki te whakatau i ngā wero ohaoha, pāpori, taiao hoki</p> <p>Mahi tahi me te tūhono puta noa i ngā kaupapa me ngā whakanōhanga kia āwhinatia te whakatika i ngā wero ā-rohe, ā-ao hoki</p>

# Te Whakatinanatanga o te Rautaki Mātauranga Matua (e haere tonu ana)

## WHĀINGA 1

### KO NGĀ ĀKONGA TE IHO

Kei te iho o te mātauranga ngā ākonga me ō rātou whānau

## WHĀINGA 2

### KĀORE HE TAUĀRAI I ROTO I TE MĀTAURANGA

Ka taea ngā whai wāhitanga me ngā putanga rawe mō ia ākonga

## WHĀINGA 3

### NGĀ WHAKAAKORANGA ME TE HAUTŪTANGA KOUNGA

He tino whaitake ngā whakaakoranga me te hautūtanga kounga mō ngā ākonga me ō rātou whānau

## WHĀINGA 4

### TE ANAMATA O TE AKO ME TE MAHI

Ngā akoranga e hāngai ana ki ngā ao o ngā tāngata o Aotearoa i tēnei rā, ā, puta noa i ō rātou rā

## WHĀINGA 5

### HE MĀTAURANGA TŪMATANUI TAUMATA TIKETIKE Ā-AO

E ponohia ana, e toitū ana te mātauranga o Aotearoa



Ko ngā mahi e mahia ana e te Kāwanatanga ki te tautoko i te whakamanatanga o te TES

1

Me whakatūturu ko ngā wāhi ako he haumarū, whai wāhi he wātea hoki i te kaikiri, te toihara me te hawene

Whakarato i ngā kawatau mārama i roto i ngā Tikanga Mahi mō te tiaki i ngā ākonga mātauranga matua ā-motu me ngā ākonga ā-ao

Te mahi tahi me ngā TEO ki te whakawhanake i te pou tarāwaho mō te haumarū me te whai wāhitanga i roto i ngā taiao mātauranga matua

Me tino tūhono ki ngā ākonga me te uara, whakarongo me te aro ki ō rātou reo kia whakaata tūturu ngā tukanga, tikanga me te mahi a te Kāwanatanga me ngā TEO i ngā hiahia ākonga

2

Me teitei ngā wawata mō ia ākonga, me te tautoko mā te tūhonohono ki ō rātou whānau, hāpori hoki ki te auaha me te tuku i te mātauranga e urupare ana ki ō rātou hiahia, me te tauti nei i ō rātou tuakiri, reo, ahurea hoki

He haumi me te tautoko i te whanaketanga o ngā hōtaka me ngā ara ako i roto i ngā reo nō Te Moana-nui-a-Kiwa

He arotake i te pūnaha haumi mātauranga matua kia tautoko i ngā TEO ki te urupare i ngā hiahia ākonga me te tautoko i ngā putanga ōrite mō ngā ākonga kāore i tino tautokohia

Ka whakarite rangapū me ngā TEO ki te whanake i ngā taputapu, ārahitanga me ngā inenga kia taea ai te whakarato mātauranga i runga i te taunakitanga e tutuki ana i ngā hiahia me ngā wawata o ngā ākonga katoa

Ka whakamana i ngā ākonga kia rangona ō rātou reo

Ka mahi tahi me ngā TEO ki te whakatinana i ngā ara hou hei tautoko i te angitu o ngā ākonga

Ka whakakaha i ngā ara reo Māori me te rangapū ki ngāi Māori ki te whakatūturu e urupare ana te pūnaha mātauranga ki te tutuki i ngā hiahia me ngā wawata o ngā ākonga Māori me tō rātou whānau

3

Whakaiti i ngā tauārai ki te mātauranga mō te katoa, tae atu ki ngā ākonga Māori, nō te Moana-nui-a-Kiwa hoki, ngā ākonga hauā me rātou e hiahia ana ki te tautoko akoranga

Me whakatūturu e pai ake ana te arotahi o te pūtea ki ngā utu tāpiri o te whakahāngai i te tautoko me te whakarato akoranga ki ngā ākonga rerekē, ā, ka tautoko i ngā kaiwhakarato ki te āwhina i ngā rōpū kāore i te tino tautokohia

Ka tautoko i ngā TEO ki te whakapiki i tō rātou āheitanga ki te tautuhi me te mārama ki ngā hiahia ākonga me ngā tauārai ki te angitu

Ka ruruku puta noa i ngā pūnaha kia whakaāhei ngā whakaritenga akoranga taketake i ngā āheitanga akoranga tāwariwari e tautoko ana i ngā ākonga ki te whakawhiti i waenganui i te mātauranga, te penihana me te mahi

Whakawhanake i te ārahitanga mahi pai rawa hei tautoko i ngā ākonga hauā, hinengaro kanorau hoki i roto i te mātauranga matua me te whakangungu

Ka tautoko i ngā ākonga nō te Moana-nui-a-Kiwa me ō rātou whānau mā te Mahere Mahi mō te Mātauranga Moana-nui-a-Kiwa

Ka rangapū me Te Taumata Aronui ki te urupare ki ā rātou tohutohu me te kupu āwhina me pēhea e pai ake te mātauranga matua e tutuki ai i ngā hiahia o ngā ākonga Māori me ō rātou hāpori

4

Me whakatūturu ka whiwhi ngā ākonga katoa i ngā pūkenga taketake, tae atu ki te reo, reo matatini me te pāngarau

Haumi ki te Akoranga Pakeke me te Hāpori ki te whakarato ki ētahi atu ākonga te akoranga me ngā ara whakatapoko ki ētahi atu akoranga, whakangungu me te whiwhi mahi

Whakakaha i te mātauranga taketake ki te whakapiki i ngā ara ākonga ki ngā taumata teitei mō te mātauranga me te whiwhi mahi

Whakaarohia ngā whakaritenga reo matatini me te pāngarau ki te whakatūturu i te āheinga ki te whakaratonga reo matatini me te pāngarau kounga i roto i te horopaki o RoVE

5

Whakauru tūturu i te reo Māori me ngā tikanga Māori ki ngā pito katoa o te ora o te wāhi ako

Ka haumi, whakawhanake me te whakatinana i ngā ara reo Māori

Whakawhanake i te ara tautoko i te whakaurunga o te reo me ngā tikanga Māori puta noa i te mātauranga matua me te whakangungu

Te waihanga me te whakatinana i tētahi mahere mō ngā tohu me ngā pūkete paetahi kia reo rua, i roto i te reo Māori me te reo Pākehā

Ka arotake i ngā pāpātanga pūtea mō te reo Māori me te mātauranga Māori i roto i te rāngai mātauranga matua

6

Whakawhanake i ngā kaimahi ki te whakakaha i te āheinga tautoko whakaakoranga, hautūtanga me te ākonga huri noa i te rāngai mātauranga

Whakatūturu i te kounga o te akoranga mā ngā āhuatanga whakaake kounga, tae atu ki te Aromātai me te Arotake nō Waho (EER) me te aroturuki hōtaka

Whakapoapoa me te tautoko i ngā TEO ki te whakawhanake me te whakakaha i te matatau me te hiranga akoranga

Ka pānui me te whakatinana i tētahi pou tarāwaho haumitanga mātauranga matua hoki e whakaatu ana e pēhea te tuku pūtea ki ngā whakaratonga kaupapa matua nui, ā, me pēhea te pūtea e whakamahia ana ki te whakatipu i ngā TEO mahinga tiketike

7

Mahi tahi ki ngā ahumahi me ngā kaitukumahi kia whakatūturu e whiwhi ana ngā ākonga ki ngā pūkenga, mātauranga me ngā huarahi kia angitu ki te mahi

Ka whakawhanake i ngā taputapu me ngā mōhihio ki te tautoko i ngā ākonga kia whai i te ara umanga whaiaro e tuku ai i a rātou ki te whakawhiti i waenganui i te mātauranga me te whai mahi, me te tautoko i ngā kaimahi tūnga kore

Whakaoti i te whakahounga mātauranga mahi tae atu ki te whakatū i ngā Kaunihera Whakawhanake Rāngai Mahi, ngā Pokapū Mahi Hiranga, me tētahi pūnaha pūtea kotahi hou

Te arotake i te pūnaha haumitanga mātauranga matua kia kaha ake te arotahi ki ngā akoranga ā-mahi puta noa i ngā tūmomo peka whānui ake

Tūhonohono me ngā kura, ngā TEO, ngā umanga, ngā kaituku mahi me ngā hāpori ki te whakarato i te ratonga mahi kaha ake

Whakakaha i te Pou Tarāwaho Tohu o Aotearoa me te pūnaha tohu ki te whakamana i te akoranga mō te tauoranga katoa me ngā ara akoranga mārama kia taea ai ngā tohu tāwariwari, poto ake tae atu ki te mōhiotanga ki te akoranga i mua

8

Whakakaha i te tāpaetanga o te rangahau me te mātauranga Māori ki te whakatutuki i ngā wero ā-rohe, ā-ao anō hoki (TES ANAKE)

Tūhonohono ki ngā wānanga ki te tautoko i tō rātou tūnga motuhake i roto i te pūnaha mātauranga matua

Tautoko i tā te Māori ārahi i te kōkiritanga me te whakamōhiotanga nō te mātauranga

Tautoko me te whakawhanake i te tāpaetanga o ngā whakahaere mātauranga matua ki te pūnaha rangahau

Whakawhanake me te whakatinana i te urupare Kāwanatanga ki te arotake motuhake o te Pūtea Rangahau nō te Pai o te Mahi

Whakatū i te rangapū pūmau i waenganui i te Wānanga me te Karauna e arotahi ana ki te tautuhi i ngā whakataunga hou mō te rāngai wānanga