



TEXAS TREASURY SAFEKEEPING TRUST COMPANY  
COMPTROLLER GLENN HEGAR, CHAIRMAN



COMPTROLLER'S INVESTMENT ADVISORY BOARD  
**TREASURY POOL UPDATE**

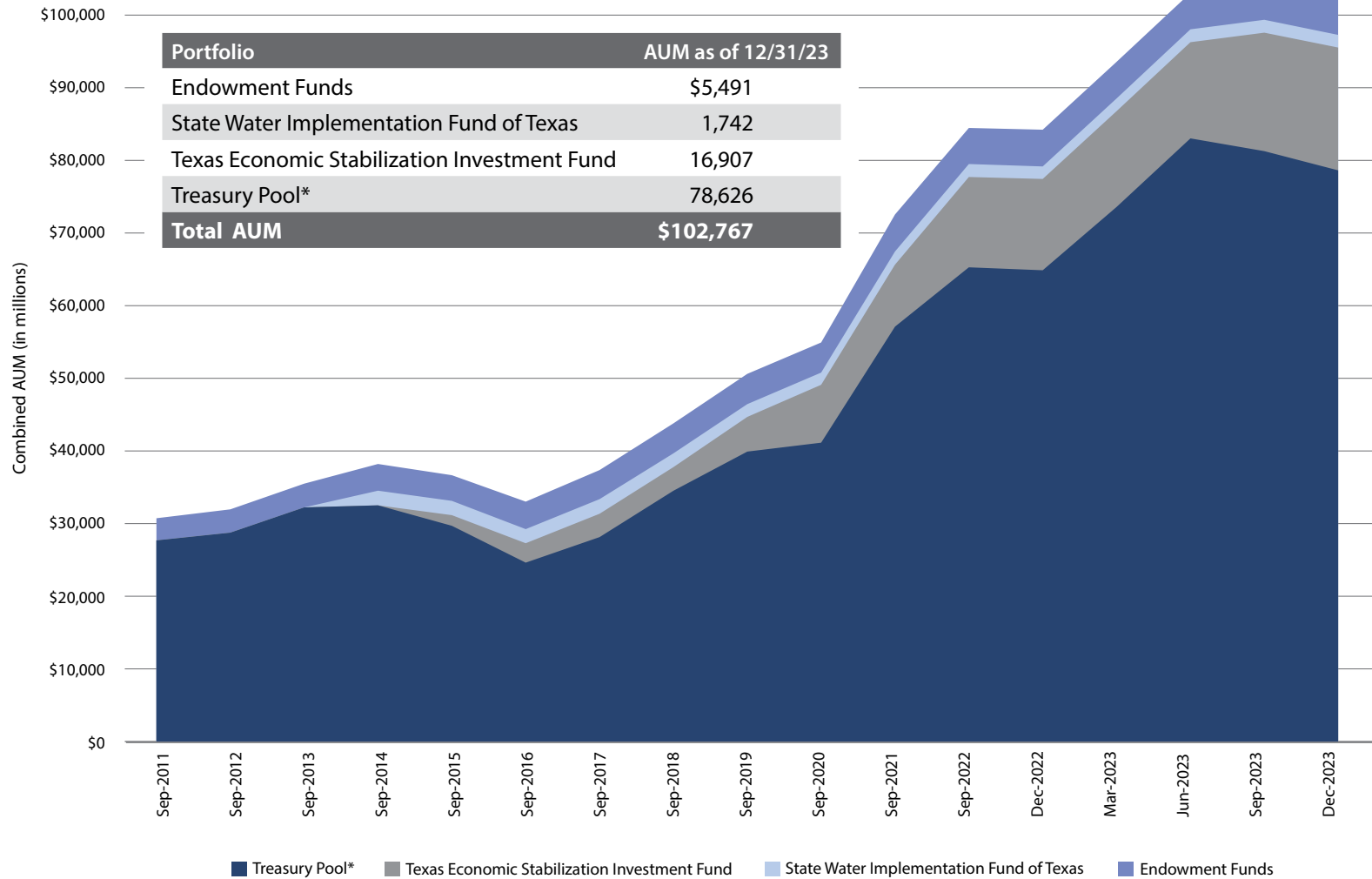
**Q1**  
2024

MEETING DATE: APRIL 16, 2024

# Summary of Net Assets Managed

As of 12/31/23

## Growth in AUM



\* Treasury Pool balance reduced by the amount included as part of SWIFT and TESTIF (combined \$1.7 billion as of 12/31/23).

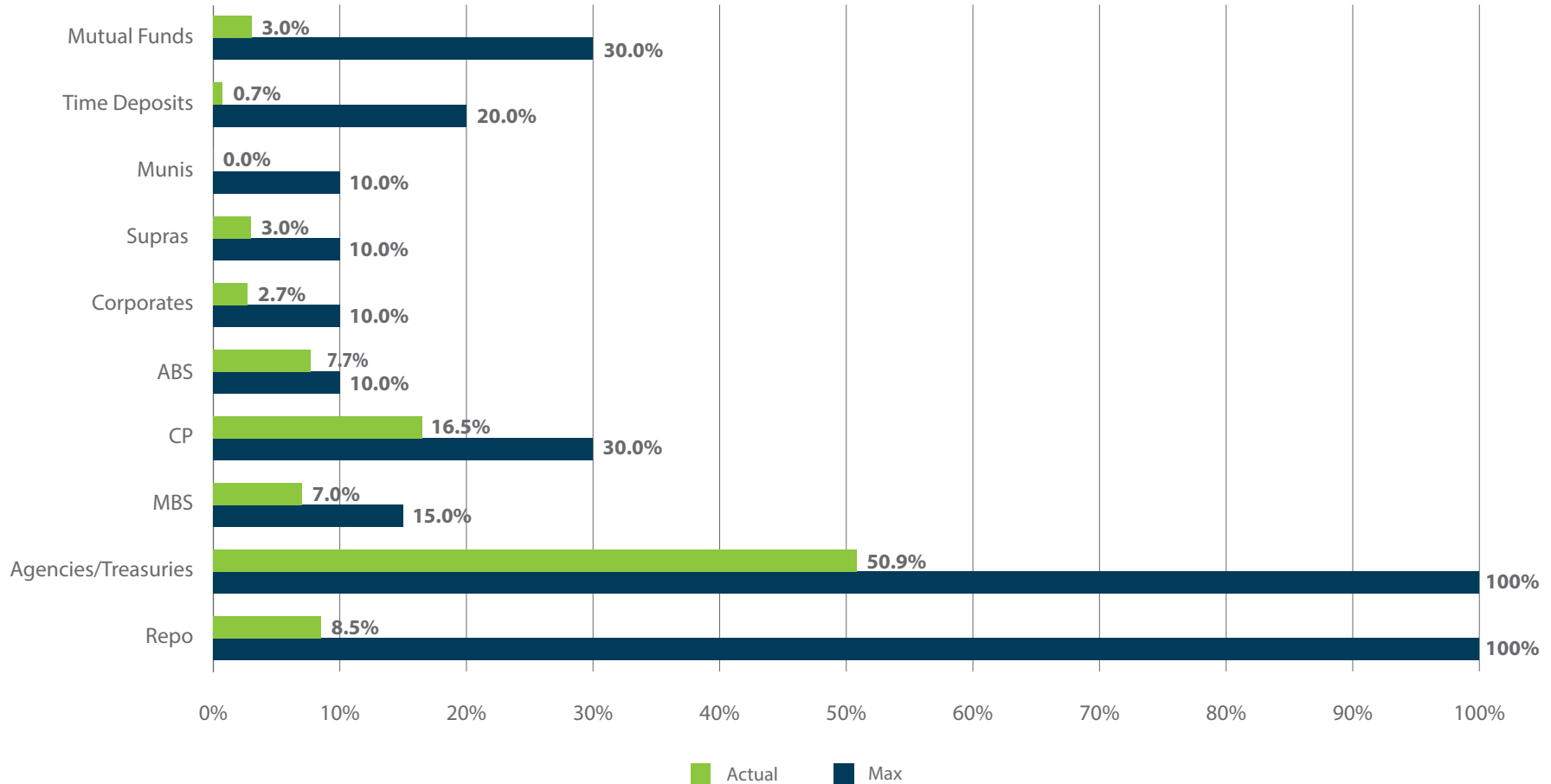
# Treasury Pool – Portfolio Asset Summary

As of February 29, 2024  
(Unaudited)

	Book Value (\$)	Market Value (\$)	Unrealized Gain/Loss (\$)	Book Yield	Market Weight	Max Policy Weight
Repurchase Agreements	6,797,759,163	6,797,759,163	-	5.29%	8.5%	100.0%
Money Market Funds	2,428,851,846	2,428,852,679	833	5.23%	3.0%	30.0%
Commercial Paper	13,155,753,201	13,155,753,201	-	5.27%	16.5%	30.0%
Treasury Bills	23,508,016,299	23,508,422,034	405,735	5.33%	29.5%	100.0%
Treasury Notes	14,448,759,378	14,427,712,226	(21,047,153)	4.91%	18.1%	100.0%
Agency Debt	2,738,268,755	2,644,001,675	(94,267,079)	2.75%	3.3%	100.0%
Supranational Debt	2,389,042,120	2,376,134,726	(12,907,395)	4.99%	3.0%	10.0%
Corporate Bonds	2,220,257,738	2,178,972,359	(41,285,379)	3.01%	2.7%	10.0%
Asset-Backed Securities	6,189,923,905	6,132,035,826	(57,888,079)	4.09%	7.7%	10.0%
Mortgage-Backed Securities	5,796,511,784	5,585,528,194	(210,983,590)	3.88%	7.0%	15.0%
Bank Deposits	567,415,000	567,415,000	-	5.40%	0.7%	20.0%
<b>Total Treasury Pool</b>	<b>80,240,559,191</b>	<b>79,802,587,083</b>	<b>(437,972,108)</b>	<b>4.88%</b>	<b>100.0%</b>	
Lottery	232,532,757	222,472,211	(10,060,546)	4.60%		

# Treasury Pool – Actual vs Max Allocations

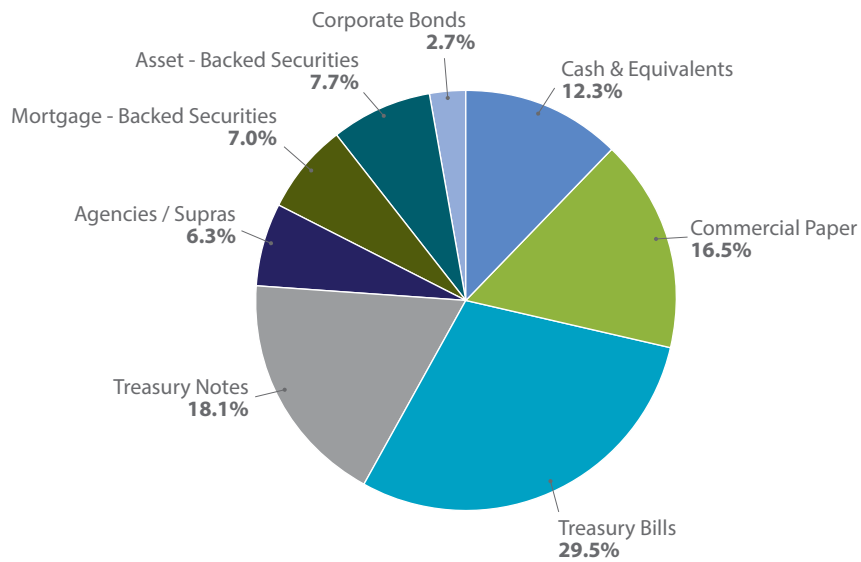
As of February 29, 2024  
(Unaudited)



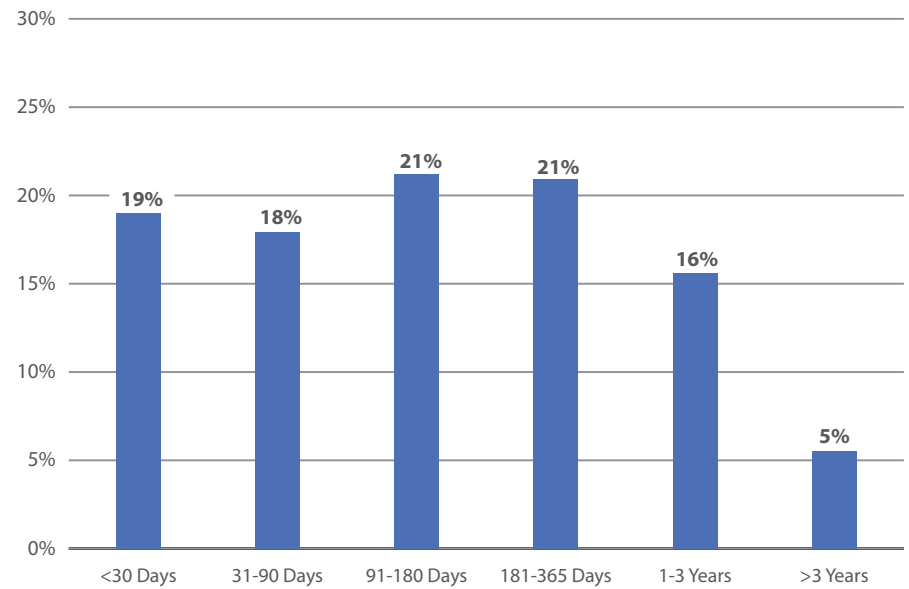
# Treasury Pool – Portfolio Characteristics

As of February 29, 2024  
(Unaudited)

### Portfolio Composition

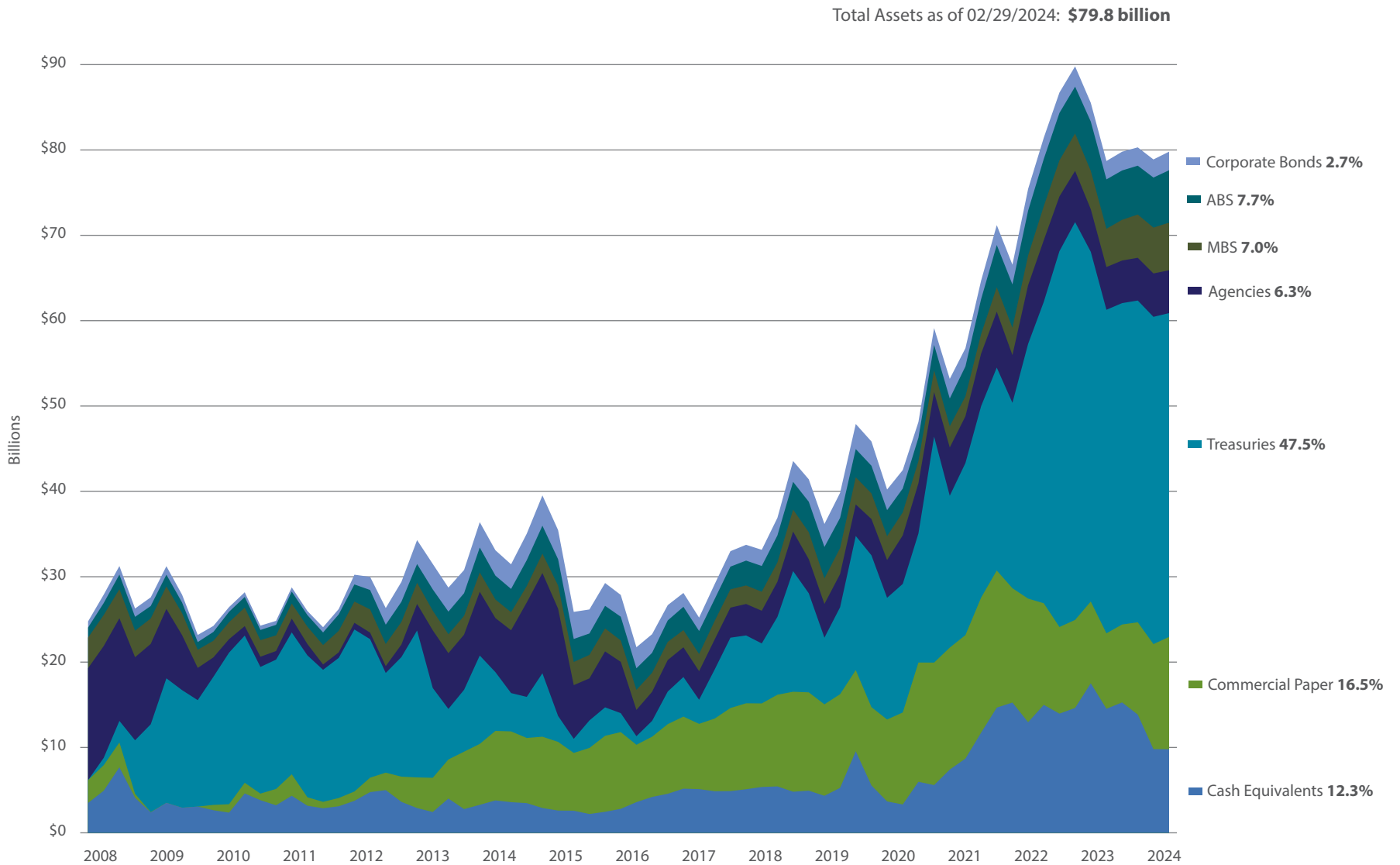


### Maturity Structure



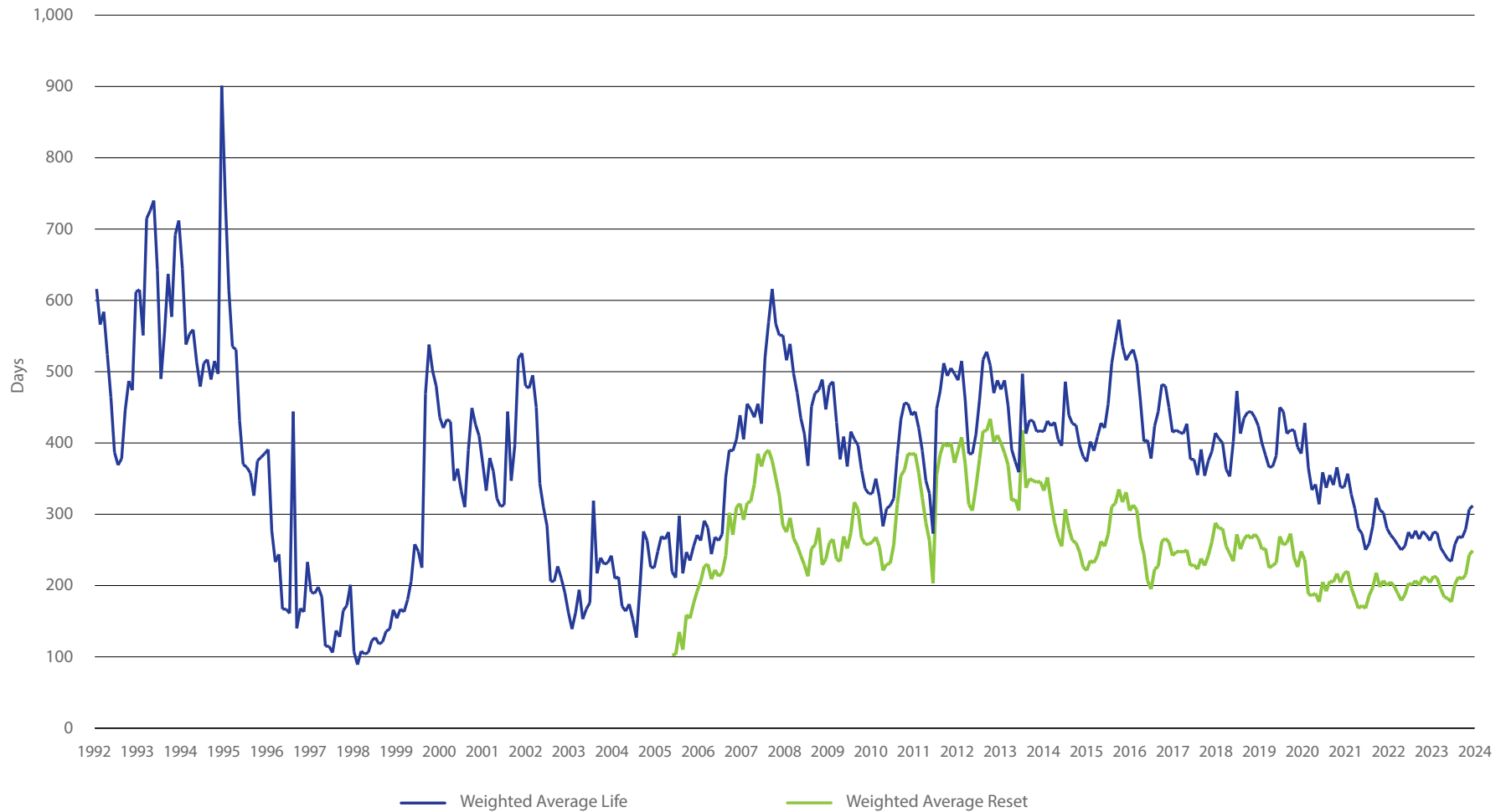
# Treasury Pool – Historical Asset Summary

As of February 29, 2024  
(Unaudited)



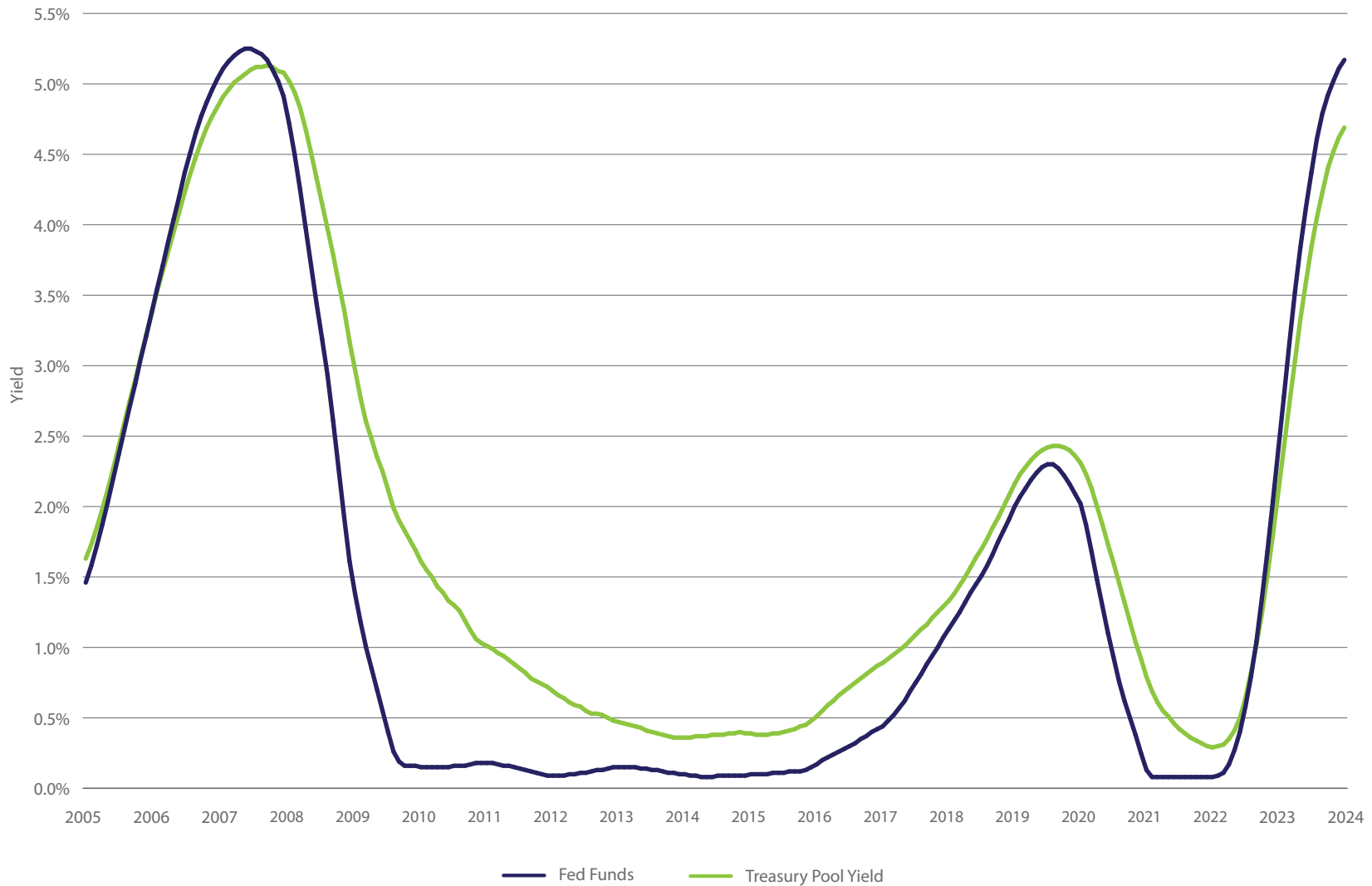
# Treasury Pool – Historical Weighted Average Life

As of February 29, 2024  
(Unaudited)



# Treasury Pool – Historical 1-Year Trailing Average Yields

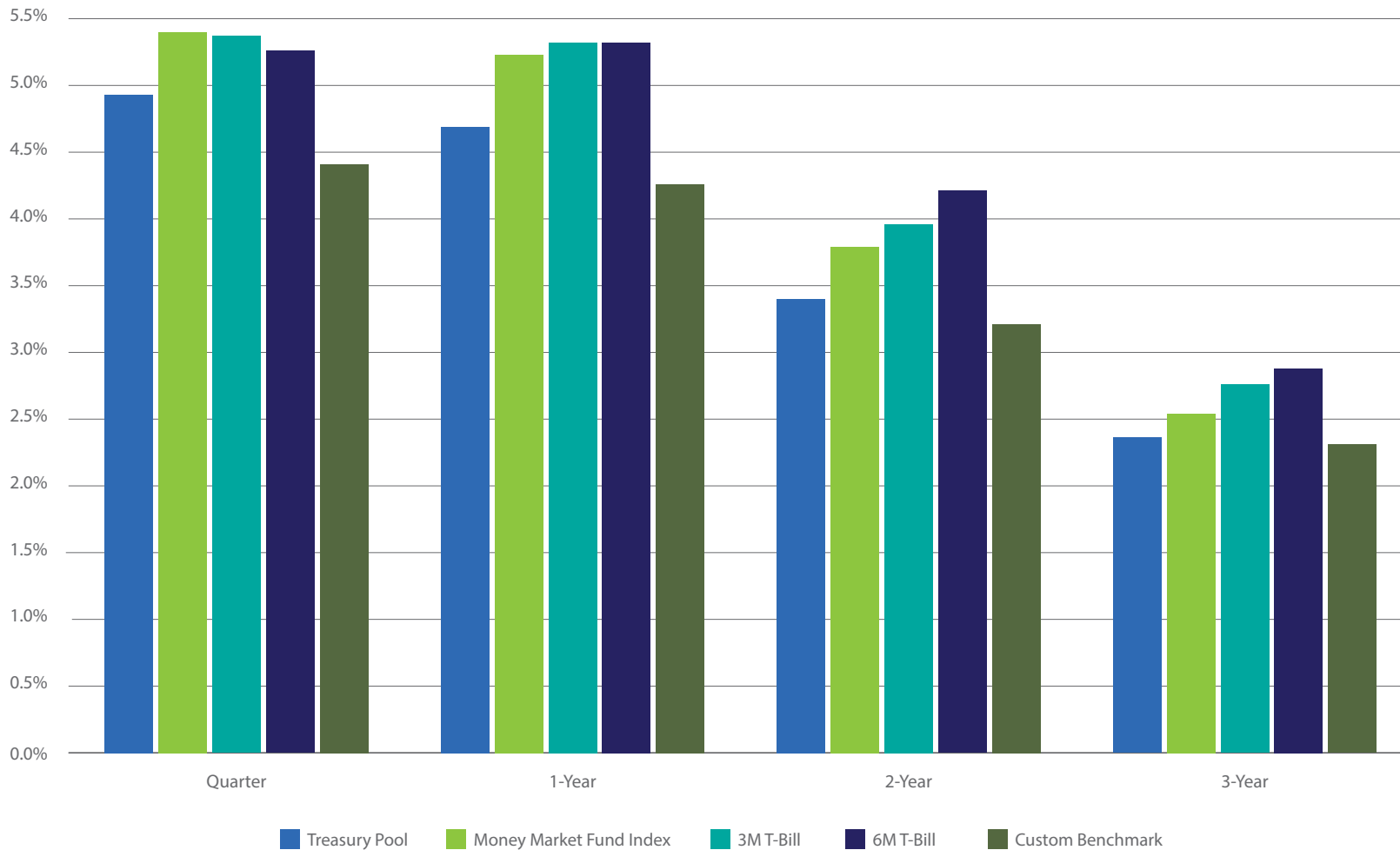
As of February 29, 2024





# Treasury Pool – Comparative Benchmark Yields

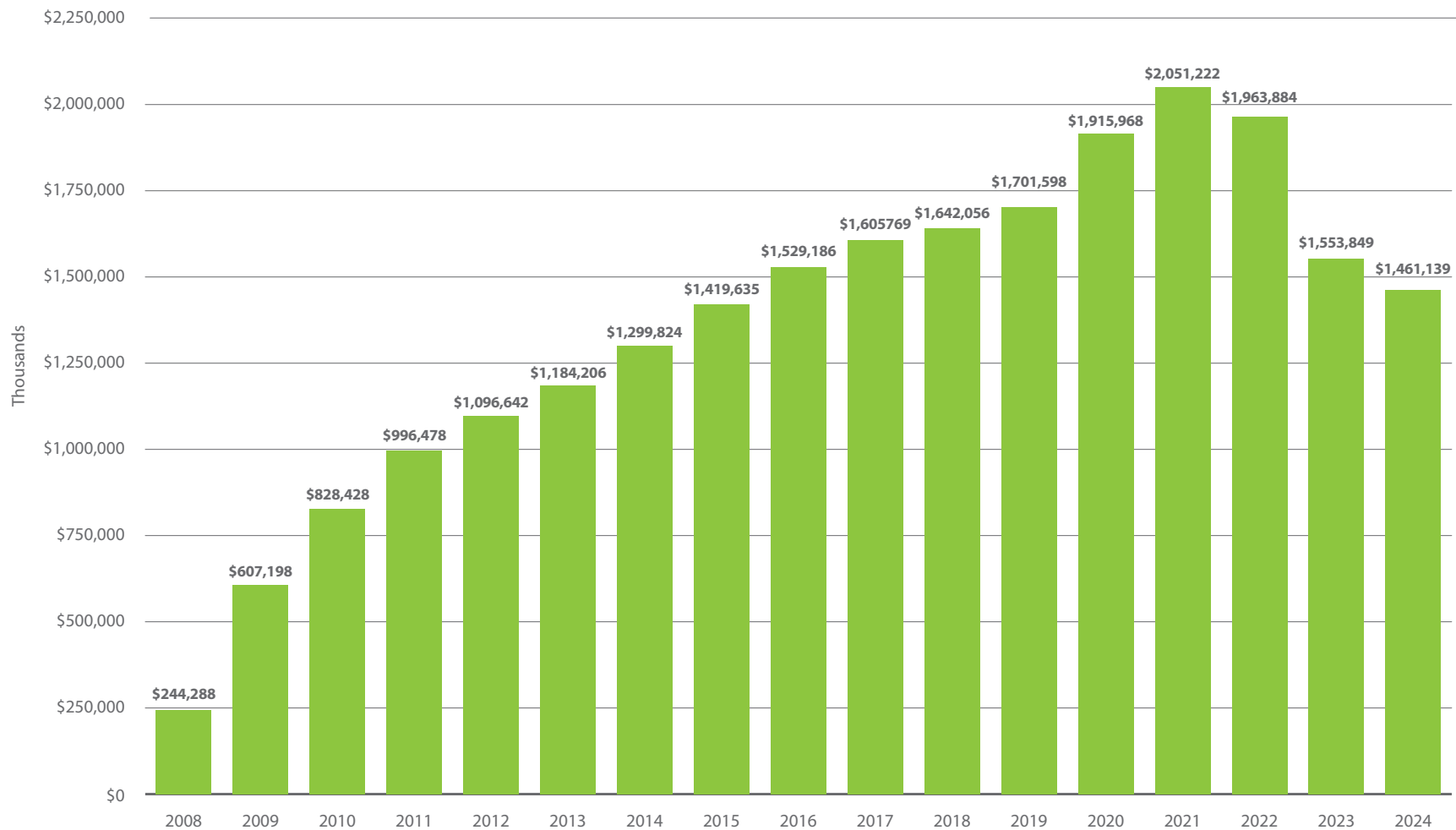
As of February 29, 2024



# Treasury Pool – Cumulative Incremental Income

As of February 29, 2024

(Relative to TxPool/TxPool Prime)





#### DISCLAIMER

---

The information contained in this booklet has been compiled by or for the Texas Treasury Safekeeping Trust Company and it does not represent the opinions or views of the funds or managers represented herein.