



 CROCHET | SKILL LEVEL: INTERMEDIATE

MEASUREMENTS

Approx 60" [152.5 cm] wide x 18" [45.5 cm] deep.

GAUGE

12 dc and 7 rows = 4" [10 cm].



MATERIALS

Bernat™ Satin Sparkle™ (2.8 oz/80 g; 160 yds/146 m)
Olive Oil (53562) **4 balls**

Size U.S. I/9 [5.5 mm] crochet hook **or size needed to obtain gauge.**

ABBREVIATIONS:

Alt = Alternate(ing)	Hdc = Half double crochet	Sp = Space(s)
Approx = Approximately	Inc = Increase(ing)	St(s) = Stitch(es)
Beg = Beginning	Rem = Remaining	Tr = Treble crochet
Ch = Chain(s)	Rep = Repeat	WS = Wrong side
Cont = Continue(ity)	Sc = Single crochet	Yoh = Yarn over hook
Dc = Double crochet	Sl st = Slip stitch	

INSTRUCTIONS

Center Section

(See Diagram 1 on page 2.)

Beg at bottom center, ch 4.

1st row: (WS). 6 dc in 4th ch from hook. 7 dc. Turn.

2nd row: Ch 3. 1 dc in first dc (counts as 2 dc throughout). (1 dc in next dc. 3 dc in next dc) twice. 1 dc in next dc. 2 dc in last dc. 13 dc. Turn.

3rd row: Ch 4. 1 tr in first dc (counts as 2 tr throughout). 1 tr in each of next 3 dc. 3 dc in next dc. 1 dc in each of next 3 dc. 3 dc in next dc. 1 tr in each of next 3 dc. 2 tr in last dc. 19 sts. Turn.

4th row: Ch 4. 1 tr in first tr. 1 tr in each of next 5 tr. 3 dc in next dc. 1 dc in each of next 5 dc. 3 dc in next dc. 1 tr in each of next 5 dc. 2 tr in last tr. 25 sts. Turn.

5th row: Ch 4. 1 tr in first tr. 1 tr in each of next 7 tr. 3 dc in next dc. 1 dc in each of next 7 dc. 3 dc in next dc. 1 tr in each of next 7 tr. 2 tr in last tr. 31 sts. Turn.

6th row: Ch 4. 1 tr in first tr. 1 tr in each of next 9 tr. 3 dc in next dc. 1 dc in each of next 9 dc. 3 dc in next dc. 1 tr in each of next 9 tr. 2 tr in last tr. 37 sts. Turn.

Cont as established inc 6 sts per row until 21 rows total have been worked. 127 sts.

Do not fasten off.

Right Side (See Diagram 2 on page 2)

1st row: Ch 4. 1 tr in first tr (counts as 2 tr). 1 tr in each of next 35 sts. 1 dc in each of next 3 sts. 1 hdc in each of next 3 sts. 1 sc in each of next 3 sts. Sl st in next st.

Turn. Leave rem sts unworked.

2nd and alt rows: Sl st in each of next 3 sc. Ch 1. 1 sc in each of next 3 hdc. 1 hdc in each of next 3 dcs. 1 dc in each of next 3 tr. 1 tr in each tr to last tr. 2 tr in last tr. Turn.

3rd row: Ch 4. 1 tr in first tr. 1 tr in each tr to last 12 sts. 1 dc in each of next 3 tr. 1 hdc in each of next 3 dc. 1 sc in each of next 3 hdc. Sl st in next sc. **Turn.**

4th row: As 2nd row.

Rep last 2 rows 5 times more. Fasten off.

Left Side

Join yarn with sl st to opposite corner tr of Center Section. Work as given for Right Side.

Do not fasten off.

Edging (See Diagram 2 on page 2)

1st rnd: Ch 1. Work 187 sc evenly across top (straight) edge of Shawl. 3 sc in corner. 190 across bottom (curved) edge of Shawl. 2 sc in last corner sp. Join with sl st to first sc. Turn.

2nd row: (See Diagram 3). Ch 1. *1 sc in next sc. Ch 3. Skip next sc. 1 dc in next sc. Ch 3. 5 dc around side post of last dc. Skip next sc. Rep from * to next corner. 1 sc in next sc. Fasten off.

Diagram 1

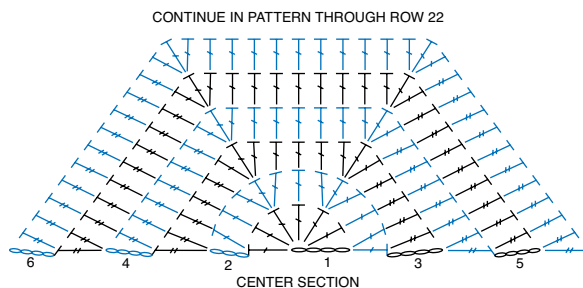
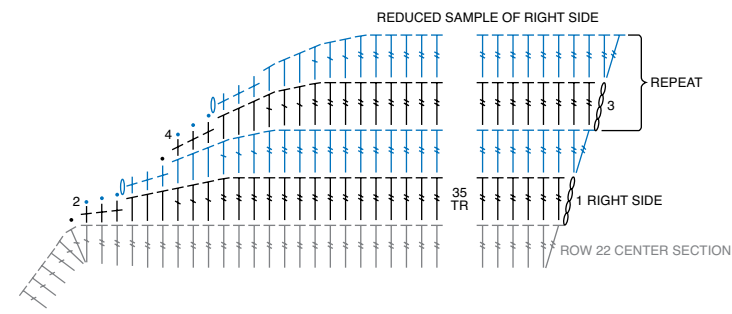


Diagram 2



- STITCH KEY**
- = chain (ch)
 - = slip st (sl st)
 - ⊥ = single crochet (sc)
 - ┆ = half double crochet (hdc)
 - ┆ = double crochet (dc)
 - ┆ = treble crochet (tr)

Diagram 3

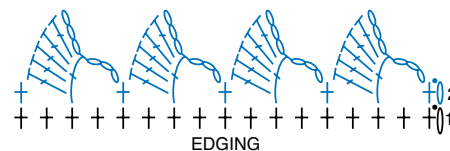


Diagram 4

