



CROCHET | SKILL LEVEL: **EASY**

ABBREVIATIONS

Beg = Beginning

Ch = Chain(s)

Cont = Continue(ity)

Hdc = Half double crochet

Hdc2tog = (Yoh and draw up a loop in next stitch) twice. Yoh and draw through all loops on hook

Pat = Pattern

Rem = Remain(ing)

Rep = Repeat

RS = Right side

Sc = Single crochet

Sc2tog = Draw up a loop in each of next 2 sts. Yoh and draw through all 3 loops on hook

Scbl = Single crochet in back loop only

Sl st = Slip stitch

Sp(s) = Space(s)

St(s) = Stitch(es)

V-st = (1 hdc. Ch 1. 1 hdc) all in indicated stitch or ch-1 space of next V-st

WS = Wrong side

Yoh = Yarn over hook

MATERIALS

Sizes	4	6	8	10	years
Bernat® Lattice™ (7.8 oz/220 g; 389 yds/356 m)					
Contrast A Teal Mix (19010)	1	1	1	1	ball
	190/172	231/210	270/245	315/285	yds/m
Contrast B Golden Hour (19008)	1	1	1	1	ball
	110/100	132/120	155/140	178/162	yds/m
Contrast C Rust Mix (19007)	1	1	1	1	ball
	100/90	21/110	141/128	165/150	yds/m

Size U.S. I/9 (5.5 mm) Susan Bates® Silvalume® crochet hook **or size needed to obtain gauge.** Susan Bates® stitch markers. Susan Bates® yarn needle.

SIZES

To fit chest measurement

4 yrs 23" [58.5 cm]

6 yrs 25" [63.5 cm]

8 yrs 26½" [67.5 cm]

10 yrs 28" [71 cm]

Finished chest

4 yrs 27½" [70 cm]

6 yrs 30½" [77.5 cm]

8 yrs 33½" [85 cm]

10 yrs 36" [91.5 cm]

GAUGE

5½ V-sts and 9½ rows = 4" [10 cm] in V-st pat.

INSTRUCTIONS

The instructions are written for size **4**. If changes are necessary for larger size(s) the instructions will be written **4 (6-8-10)**. Numbers for each size are shown in the same color throughout the pattern. When only one number is given in black, it applies to all sizes.

STRIPE PAT

With A – 2 rows

With B – 2 rows.

With C – 2 rows.

These 6 rows form Stripe Pat.

Note: Ch 2 at beg of row **does not** count as st.

BACK

****Ribbing:** With A, ch 8.

1st row: (RS). 1 sc in 2nd ch from hook. 1 sc in each ch to end of chain. Turn. 7 sc.

2nd row: Ch 1. 1 scbl in each st to end of row. Turn.

Rep last row until Ribbing (when slightly stretched) measures **13½ (14½-15½-17)" [34.5 (37-39.5-43) cm]**, ending on a WS row. **Do not** fasten off. **Do not** turn.

1st row: (WS). With A, ch 1. Work **58 (64-70-76)** sc evenly across long edge of Ribbing. Turn. **Do not** break A. Join B.

Note: See diagram on page 4.

2nd row: With B, ch 2. 1 hdc in each of first 2 sc. Skip next ch. *V-st in next sc. Skip next 2 sc. Rep from * to last 4 sc. V-st in next sc. Skip next sc. 1 hdc in each of last 2 sc. Turn. **18 (20-22-24)** V-sts and 4 hdc.

3rd row: Ch 2. 1 hdc in each of first 2 hdc. *V-st in next V-st. Rep from * to last 2 hdc. 1 hdc in each of last 2 hdc. Turn.

First 2 rows of Stripe Pat are complete.

Keeping cont of Stripe Pat, rep last row until work from work from lower edge measures **9 (10-10½-11½)" [23 (25.5-26.5-29) cm]**, ending on a WS row. Fasten off.

Shape armholes: 1st row: (RS). Skip first 2 hdc and V-st. Join appropriate color to ch-1 sp of next V-st. Ch 2. 1 hdc in same sp as sl st. *V-st in next V-st. Rep from * to last 2 V-sts and 2 hdc. 1 hdc in ch-1 sp of next V-st. **Turn.** Leave rem V-st and 2 hdc unworked. **14 (16-18-20)** V-sts and 2 hdc.

2nd row: Ch 2. 1 hdc in first hdc. 1 hdc in ch-1 sp of next V-st. *V-st in next V-st. Rep from * to last V-st and hdc. 1 hdc in ch-1 sp of next V-st. 1 hdc in last hdc. Turn. **12 (14-16-18)** V-sts and 4 hdc.

3rd row: Ch 2. Hdc2tog over first 2 hdc. *V-st in next V-st. Rep from * to last 2 hdc. Hdc2tog. Turn.

4th row: Ch 2. 1 hdc in first st. *V-st in next V-st. Rep from * to last st. 1 hdc in last st. Turn. **12 (14-16-18)** V-sts and 2 hdc.**

Keeping cont of Stripe Pat, rep last row until armhole measures **5½ (6-6½-7)" [14 (15-16.5-18) cm]**, ending on a WS row. Fasten off.

Shape shoulders: Next row: (RS). Skip first hdc and **1 (1-2-2)** V-st(s). Join appropriate color with sl st to first hdc of next V-st. Ch 1. 1 sc in same sp as sl st. 1 sc in next (ch-1 sp and hdc) of same V-st. 1 hdc in (hdc, ch-1 sp, hdc) of next V-st. V-st in each of next **6 (8-8-10)** V-sts. 1 hdc in (hdc, ch-1 sp, hdc) of next V-st. 1 sc in (hdc, ch-1 sp, hdc) of next V-st. Fasten off. **Turn.** Leave rem sts unworked.

Next row: (WS). Skip first 3 sc. Join appropriate color to next hdc. Ch 1. 1 sc in same sp as sl st. 1 sc in each of next 2 hdc. V-st in each of next **6 (8-8-10)** V-sts. 1 sc in each of next 3 hdc. Fasten off. Leave rem sts unworked.

FRONT

Work from ** to ** as given for Back. Keeping cont of Stripe Pat, rep last row until armhole measures 4 rows less than Back before shoulder shaping, ending on a WS row.

Note: See neck and shoulder shaping diagrams on pages 4 and 5.

Left Front: Shape neck: 1st row: (RS). Ch 2. 1 hdc in first st. V-st in each of next **4 (4-5-5)** V-sts. 1 hdc in ch-1 sp of next V-st. **Turn.** Leave rem sts unworked.

2nd row: Ch 2. 1 hdc in first hdc. 1 hdc in ch-1 sp of next V-st. V-st in each V-st to last hdc. 1 hdc in last hdc. Turn. **3 (3-4-4)** V-sts and 3 hdc.

3rd row: Ch 2. 1 hdc in first hdc. V-st in each V-st to last 2 hdc. Hdc2tog. Turn.

4th row: Ch 2. 1 hdc in first st. V-st in each V-st to last hdc. 1 hdc in last hdc. Fasten off.

Shape left shoulder: 1st row: (WS). Skip first hdc and **1 (1-2-2)** V-st(s). Join appropriate color with sl st to first hdc of next V-st. Ch 1. 1 sc in same sp as sl st. 1 sc in next (ch-1 sp and hdc) of same V-st. 1 hdc in (hdc, ch-1 sp, hdc) of next V-st. 1 hdc in last hdc. Turn.

2nd row: Ch 1. Sc2tog. 1 sc in each of next 2 hdc. Fasten off.

Shape right neck: 1st row: (RS). Skip next **2 (4-4-6)** V-sts. Join appropriate color with sl st to ch-1 sp of next V-st. Ch 2. 1 hdc in same sp as sl st. V-st in each of next **4 (4-5-5)** V-sts. 1 hdc in last hdc. Turn.

2nd row: Ch 2. 1 hdc in first hdc. V-st in each V-st to last V-st and hdc. 1 hdc in ch-1 sp of next V-st. 1 hdc in last hdc. Turn. **3 (3-4-4)** V-sts and 3 hdc.

3rd row: Ch 2. Hdc2tog. V-st in each V-st to last hdc. 1 hdc in last hdc. Turn.

4th row: Ch 2. 1 hdc in first hdc. V-st in each st to last hdc. 1 hdc in last hdc. Fasten off. **Do not** turn.

Shape right shoulder: 1st row: (WS). Skip first hdc and **1 (1-2-2)** V-st(s). Join appropriate color with sl st to first hdc of next V-st. Ch 1. 1 sc in same sp as sl st. 1 sc in next (ch-1 sp and hdc) of same V-st. 1 hdc in (hdc, ch-1 sp, hdc) of next V-st. 1 hdc in last hdc. Turn.

2nd row: Ch 1. Sc2tog. 1 sc in each of next 2 hdc. Fasten off.

FINISHING

Sew shoulder seams.

Neckband: With A, ch 4.

1st row: (RS). 1 sc in 2nd ch from hook. 1 sc in each ch to end of chain. Turn. 3 sc.

2nd row: Ch 1. 1 scbl in each st to end of row. Turn.

Rep last row until Neckband (when stretched) measures length to fit around neck edge. Beg at right shoulder seam, sewing in place as you work. Fasten off. Sew neckband seam.

Armbands (make 2)

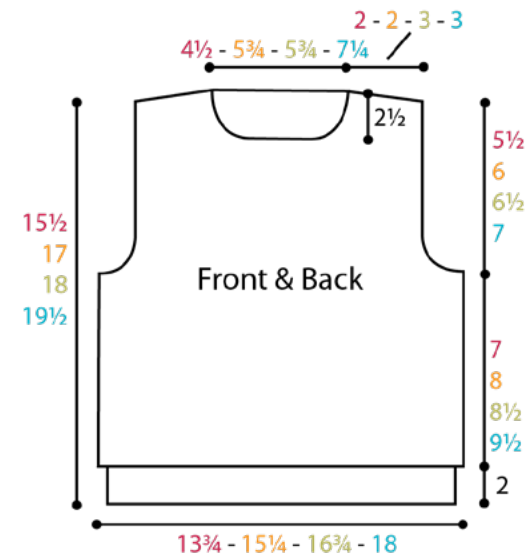
With A, ch 4.

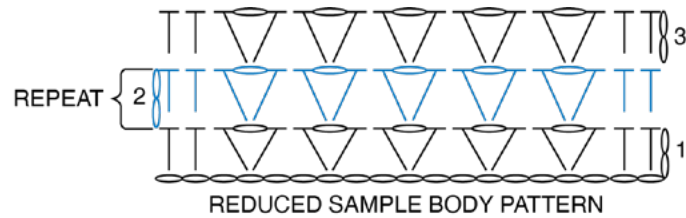
1st row: (RS). 1 sc in 2nd ch from hook. 1 sc in each ch to end of chain. Turn. 3 sc.

2nd row: Ch 1. 1 scbl in each st to end of row. Turn.

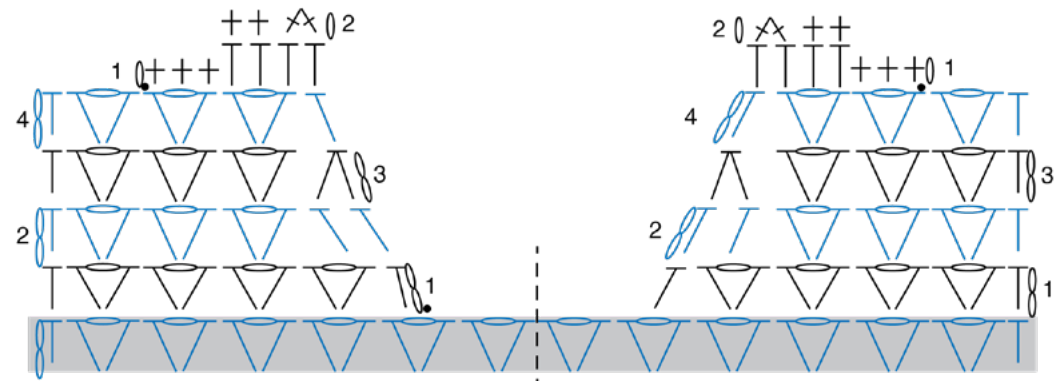
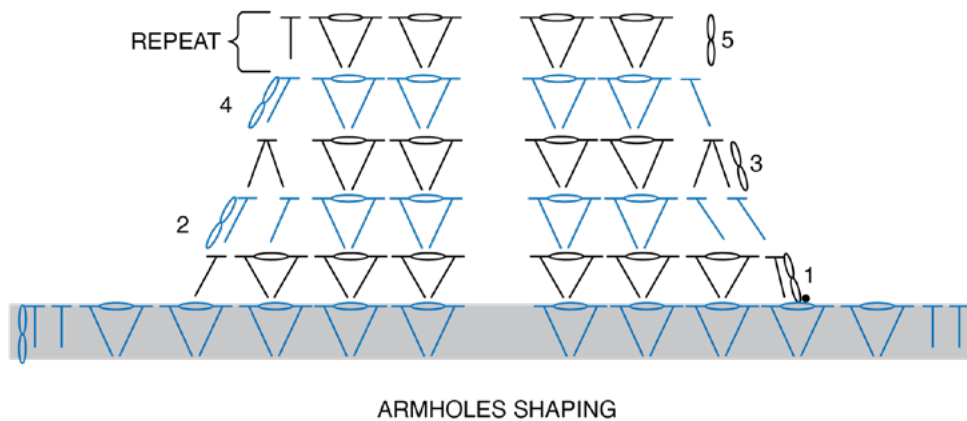
Rep last row until Armband (when stretched) measures length to fit along armhole edge, sewing in place as you work. Fasten off.

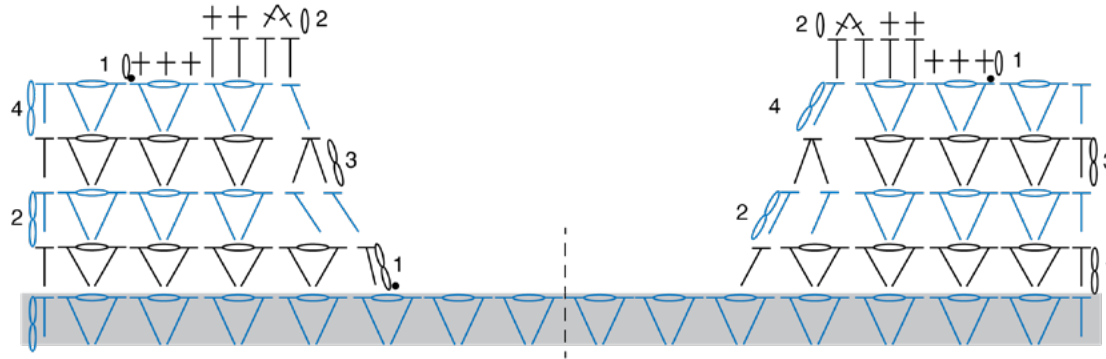
Sew side and armband seams.



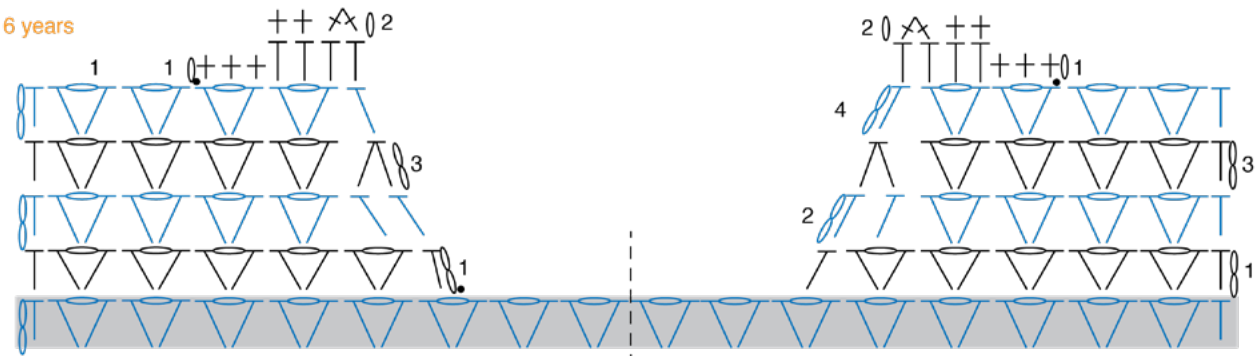


- STITCH KEY
- = slip stitch (sl st)
 - = chain (ch)
 - + = single crochet (sc)
 - ⋈ = single crochet 2 together (sc2tog)
 - ┆ = half double crochet (hdc)
 - ∇ = V-stitch (V-st)

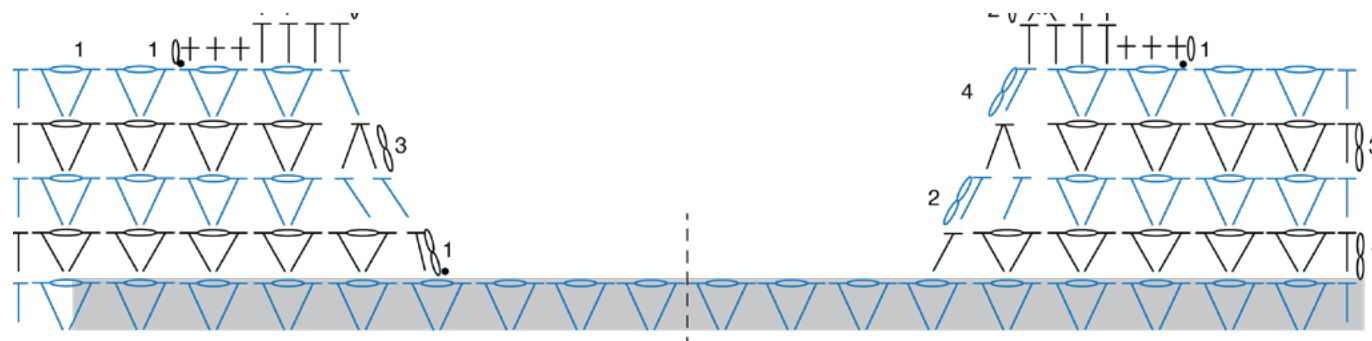




SHAPE NECK AND SHOULDERS Size 6 years



SHAPE NECK AND SHOULDERS Size 8 years



SHAPE NECK AND SHOULDERS Size 10 years

STITCH KEY

- = slip stitch (sl st)
- = chain (ch)
- ⊕ = single crochet (sc)
- ⌘ = single crochet 2 together (sc2tog)
- ⌚ = half double crochet (hdc)
- ∇ = V-stitch (V-st)