



Svetlana Avrakh  
Designer



KNIT | SKILL LEVEL: **BEGINNER**

### ABBREVIATIONS

**Approx** = Approximately

**Beg** = Beginning

**K** = Knit

**K2tog** = Knit next 2 stitches together

**P** = Purl

**Pat** = Pattern

**PM** = Place marker

**Pss** = Pass slipped stitch over

**Rem** = Remaining

**Rep** = Repeat

**RS** = Right side

**Sl1** = Slip next stitch knitwise

**Ssk** = Slip next 2 stitches knitwise one at a time. Pass them back onto left-hand needle, then knit through back loops together

**St(s)** = Stitch(es)

**WS** = Wrong side

**Yo** = Yarn over

### MATERIALS

Patons® Linen™ (13.5 oz/100 g; 275 yds/251 m)

Sizes	XS/S	M/L	1/2XL	3/5XL	
Goldenrod (14022)	6	8	10	12	<b>balls</b>
	<b>660/600</b>	<b>740/675</b>	<b>860/782</b>	<b>975/886</b>	<b>yds/m</b>

Sizes U.S. 5 (3.75 mm) and U.S. 6 (4 mm) Susan Bates® knitting needles **or size needed to obtain gauge.** Susan Bates® stitch markers. Susan Bates® yarn needle.

### SIZES

**To fit chest measurement**

<b>XS/S</b>	<b>28-34 [71-86.5 cm]</b>
<b>M/L</b>	<b>36-42" [91.5-106.5 cm]</b>
<b>1/2XL</b>	<b>44-50" [112-127 cm]</b>
<b>3/5XL</b>	<b>52-58" [132-147.5 cm]</b>

**Finished chest**

<b>XS/S</b>	<b>38½" [98 cm]</b>
<b>M/L</b>	<b>45½" [115.5 cm]</b>
<b>1/2XL</b>	<b>52½" [133.5 cm]</b>
<b>3/5XL</b>	<b>9" [150 cm]</b>

## GAUGES

23 stitches (sts) and 30 rows = 4" [10 cm] with larger needles in Lace Pattern (pat).

24 sts and 32 rows = 4" [10 cm] with larger needles in stocking st.

## INSTRUCTIONS

The instructions are written for smallest size **XS/S**. If changes are necessary for larger sizes the instructions will be written thus **XS/S (M/L-1/2XL-3/5XL)**. Numbers for each size are shown in the same color throughout the pattern. When only one number is given in black, it applies to all sizes.

## FRONT & BACK (make alike)

\*\*With smaller needles, cast on **111 (131-151-171)** stitches (sts).

**1st row:** [Right Side (RS)]. Knit 1 (K1). \*Purl 1 (P1). K1. Repeat (Rep) from \* to end of row.

**2nd row:** P1. \*K1. P1. Rep from \* to end of row.

Rep last 2 rows of (K1. P1) ribbing for 1" [2.5 cm], ending on a Wrong Side (WS) row.

Change to larger needles and proceed in Arrowhead Lace Pattern (Pat) (multiple of 10 sts + 1) as follows:

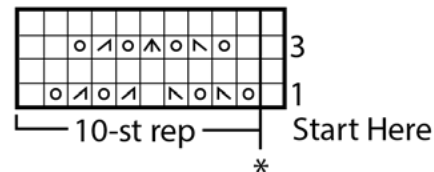
**1st row:** (RS). K1. \*(yo. ssk) twice. K1. (K2tog. yo) twice. K1. Rep from \* to end of row.

**2nd row:** Purl.

**3rd row:** K1. \*K1. yo. ssk. yo. Sl1K. K2tog. pssso. yo. K2tog. yo. K2. Rep from \* to end of row.

**4th row:** Purl.\*\*

Rep last 4 rows for Arrowhead Lace Pat until work from beginning (beg) measures approximately (approx) 11" [28 cm], ending on a 4th row.



### Key

- = Knit on RS rows. Purl on WS rows.
- ⊠ = K2tog
- ⊡ = Sl1. K2tog. pssso.
- ⊞ = ssk
- ⊚ = yo

**Shape Sleeves: 1st row:** (RS). Cast on 15 sts. K6. \*(yo. ssk) twice. K1. (K2tog. yo) twice. K1. Rep from \* to end of row. **126 (146-166-186)** sts.

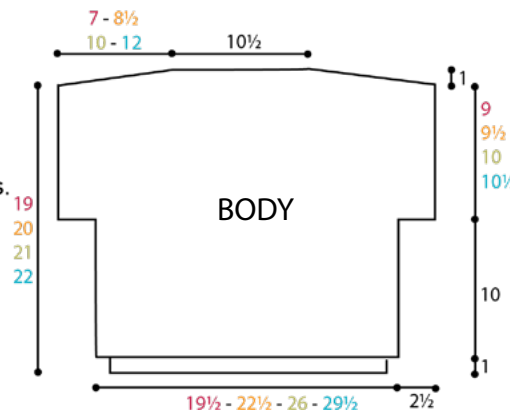
**2nd row:** Cast on 15 sts. K5. Purl to last 5 sts. K5. **141 (161-181-201)** sts. Place Markers (PM) at each end of row.

**3rd row:** K6. \*K1. yo. ssk. yo. Sl1. K2tog. pssso. yo. K2tog. yo. K2. Rep from \* to last 5 sts. K5.

**4th row:** K5. Purl to last 5 sts. K5.

**5th row:** K6. \*(yo. ssk) twice. K1. (K2tog. yo) twice. K1. Rep from \* to to last 5 sts. K5.

**6th row:** K5. Purl to last 5 sts. K5. Rep 3rd to 6th rows until work from marked row measures **9 (9½-10-10½)" [23 (24-25.5-26.5) cm]**, ending on a 4th row.



**Shape shoulders: 1st row:** (RS). Cast off 10 sts knitwise. K1 (stitch on needle after cast off). (K2tog. yo) twice. K1. \*(yo. ssk) twice. K1. (K2tog. yo) twice. K1. Rep from \* to to last 5 sts. K5.

**2nd row:** Cast off 10 sts purlwise. Knit to end of row.

**3rd row:** Cast off 10 sts knitwise. Knit to end of row.

**4th row:** Cast off 10 sts purlwise. Knit to end of row.

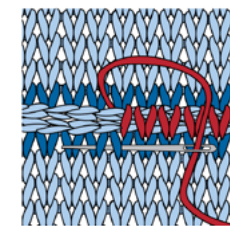
Rep last 2 rows until 61 sts remain (rem). Cast off.

## FINISHING

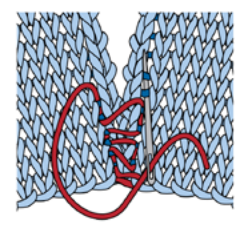
Pin all pieces to measurements. Cover with a damp cloth leaving cloth to dry.

Sew shoulder seams, leaving center 61 sts open for Neck.

Sew side seams using vertical mattress st, as shown in diagram.



SHOULDER SEAM



MATTRESS STITCH