

# Studying Family Formation Trajectories' Deinstitutionalization in Russia Using Sequence Analysis

**Alyona Artamonova, Ekaterina Mitrofanova**

National Research University Higher School of Economics

[mitrofanovy@yandex.ru](mailto:mitrofanovy@yandex.ru), [alyona89152694371@yandex.ru](mailto:alyona89152694371@yandex.ru)

The work was prepared within the framework of the Academic Fund Program at the National Research University Higher School of Economics (HSE) in 2016 (grant № 16-05-0011 “Development and testing of demographic sequence analysis and mining techniques”) and supported within the framework of a subsidy granted to the HSE by the Government of the Russian Federation for the implementation of the Global Competitiveness Program.

# Theoretical pre-conditions

## Soviet Union Collapse:

### Early and Universal marriage

(The average age at marriage has remained practically unchanged since the late 19th century: 24.2 years for men and 21.4 for women in 1989; only 3.7 percent of men and 3.5 percent of women aged 45-49 were never married in 1989)

### Small proportion of cohabitations

(6,6% of matrimonial unions are cohabitations in 1994)

### Not large proportion of divorces

(3,8 divorces per 1000 population in 1989)

TFR = 2,02 in 1989

190 abortions per 100 live births in 1985

Patriarchal family, both spouses work, wife is a householder

(institutionalized life course)



### The rise of average marital age

(The average age at marriage was 27,4 years for men and 25 years for women in 2010)

The rise of proportion of cohabitations  
(13% of matrimonial unions are cohabitations in 2010)

More significant proportion of divorces  
(5,2 divorces per 1000 population in 2010)

TFR = 1,57 in 2010

66 abortions per 100 live births in 2010

Partner family, husband can be a householder

(deinstitutionalized life courses)

## Second Demographic Transition

# The Aim and Hypotheses

**Our aim was to demonstrate how family formation trajectories of men and women from different Russian generations were transforming**

## **Group 1. Gender:**

- Women take steps to family earlier than men
- Women stay alone with children more often than men
- Women experience more family formation events than men

## **Group 2. Generations:**

- De-standardization of family formation trajectories was demonstrated first by representatives of the first “Modern” generation (1970-79 birth cohort)
- “Modern” generations experience more varied matrimonial and reproductive events than the representatives of “Soviet” generations

# Data Description

Panel data of the Russian **Generations and Gender Survey (GGG: 2004, 2007, 2011)**  
and retrospective data of the **“Person, Family, Society” survey (PFS: 2013)**

## Proportions of men and women in Russian generations

Generation	Gender	GGG		PFS	
		Absolute numbers	Percentages	Absolute numbers	Percentages
1930-1939	Men	192	25%	-	-
	Women	585	75%	-	-
1940-1949	Men	214	28%	-	-
	Women	552	72%	-	-
1950-1959	Men	387	30%	-	-
	Women	923	70%	-	-
1960-1969	Men	423	36%	-	-
	Women	761	64%	-	-
1970-1979	Men	325	36%	798	48%
	Women	585	64%	855	52%
1980-1986(89)	Men	158	42%	939	49%
	Women	216	58%	988	51%
1990-1995	Men	-	-	473	53%
	Women	-	-	424	47%

“Soviet” generations

“Modern” generations

# Methodology: Sequence Analysis

- Individual life courses can be represented as a sequence of events
- Every event can be coded with a letter and the built “word” can describe the state of an individual at every point of a chosen time window

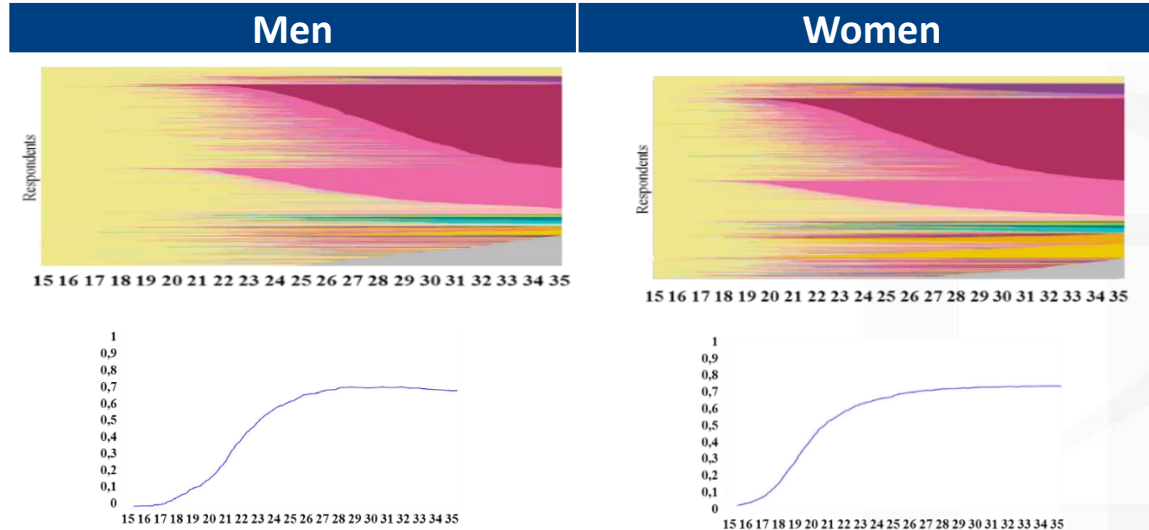
## Alphabet of partnership and fertility states

Code	State	Code	State
<b>SC0</b>	Single, no children	<b>M1C0</b>	First marriage, no children
<b>SC1</b>	Single, 1 child	<b>M1C1</b>	First marriage, 1 child
<b>SC2</b>	Single, 2 children	<b>M1C2</b>	First marriage, 2 children
<b>P1C0</b>	First cohabitation, no children	<b>M2C0</b>	Second marriage, no children
<b>P1C1</b>	First cohabitation, 1 child	<b>M2C1</b>	Second marriage, 1 child
<b>P1C2</b>	First cohabitation, 2 children	<b>M2C2</b>	Second marriage, 2 children
<b>P2C0</b>	Second cohabitation, no children		
<b>P2C1</b>	Second cohabitation, 1 child		
<b>P2C2</b>	Second cohabitation, 2 children		


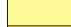



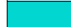










## Women Take Steps to Family Earlier than Men (1) Women Stay Alone with Children More Often than Men Do (1)

### Family formation trajectories of Russians

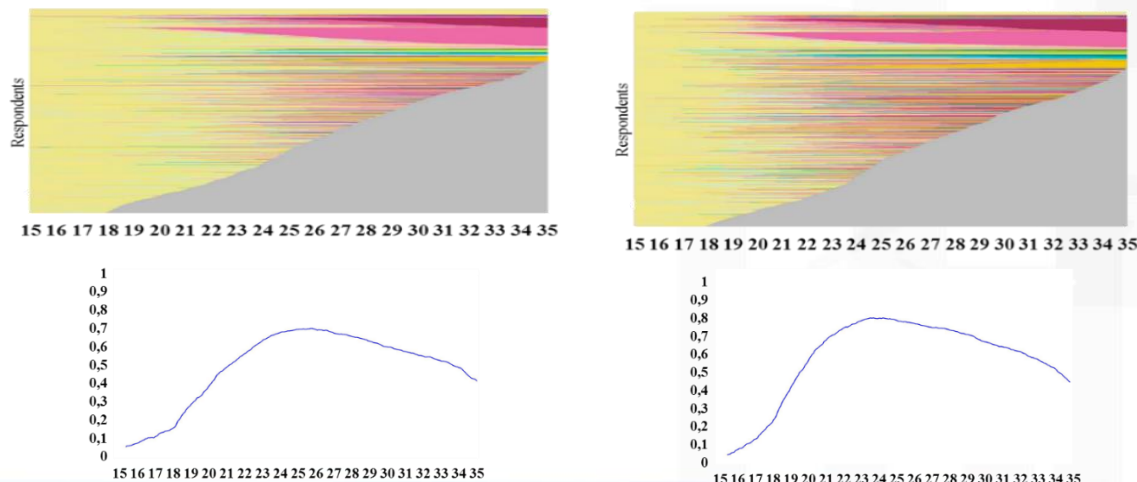
GGs:



### Legend

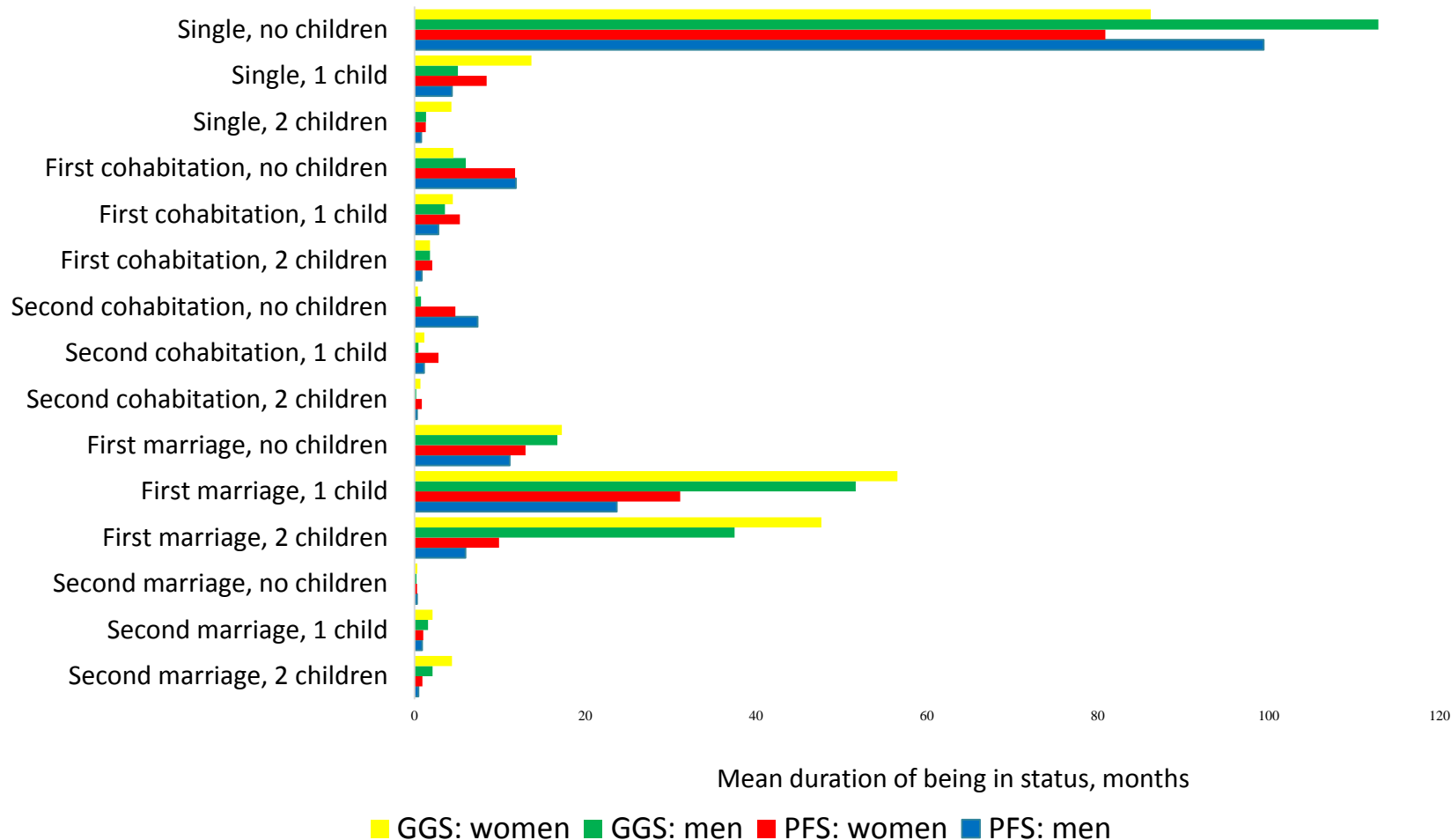
-  Censored
-  Single, no children
-  Single, 1 child
-  Single, 2 children
-  First cohabitation, no children
-  First cohabitation, 1 child
-  First cohabitation, 2 children
-  Second cohabitation, no children
-  Second cohabitation, 1 child
-  Second cohabitation, 2 children
-  First marriage, no children
-  First marriage, 1 child
-  First marriage, 2 children
-  Second marriage, no children
-  Second marriage, 1 child
-  Second marriage, 2 children

PFS:

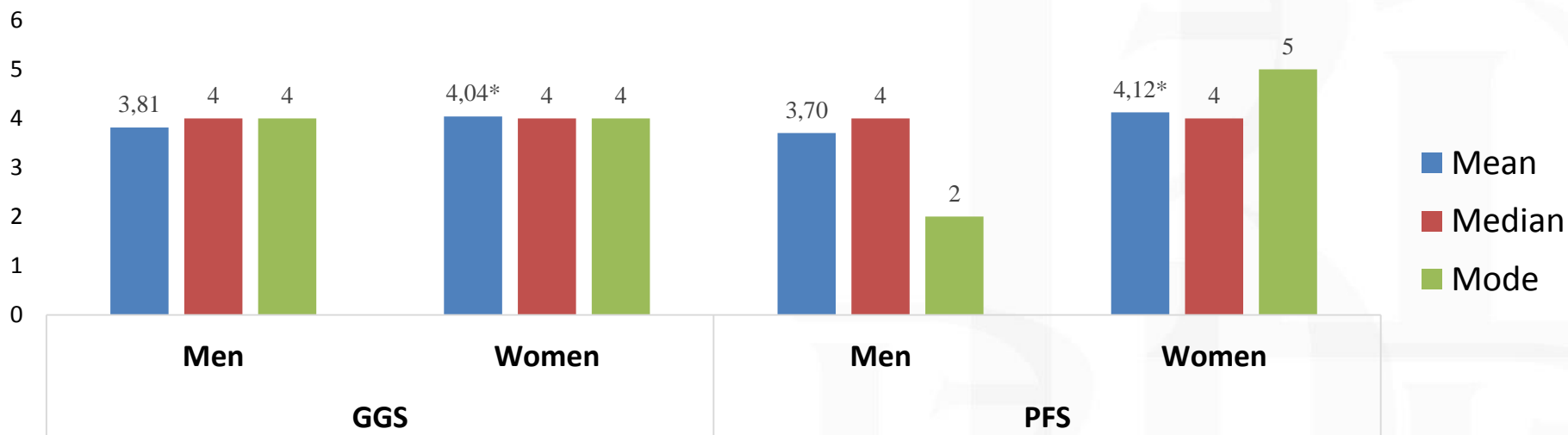


## Women Take Steps to Family Earlier than Men (2) Women Stay Alone with Children More Often than Men Do (2)

Mean time spent in status



### Number of family formation events by gender



\*The difference is statistically significant ( $p < 0,001$ )



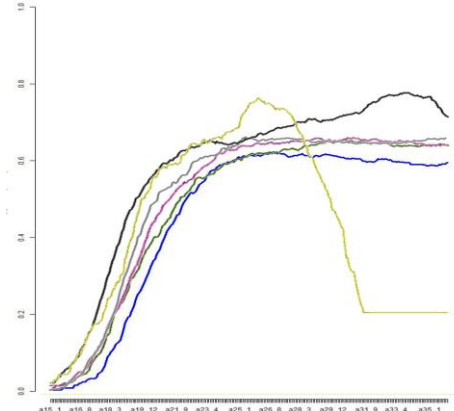
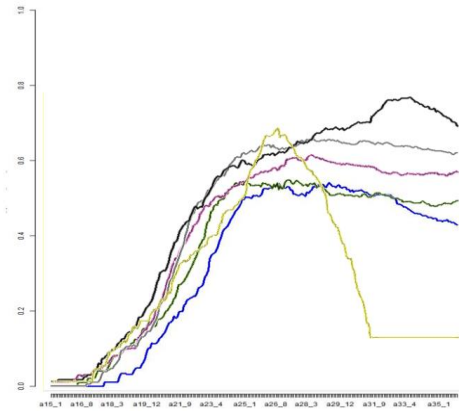
## De-standardization of Family Formation Trajectories Was Demonstrated First by Representatives of First “Modern” Generation

### Entropy by generations

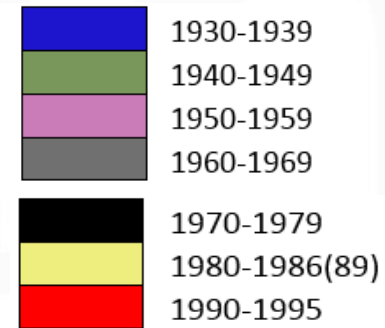
Men

Women

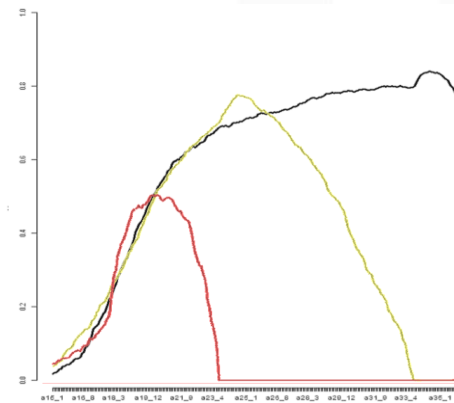
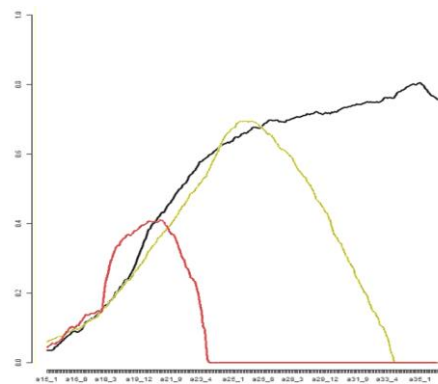
GGs:



Legend



PFS:



## De-standardization of Family Formation Trajectories Was Demonstrated First by Representatives of First “Modern” Generation

### Distribution of partnerships and fertility statuses by gender and generation

“Soviet” generations

“Modern” generations

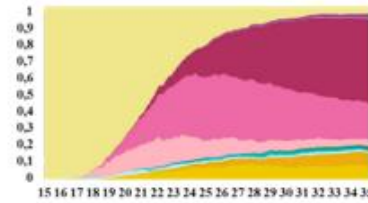
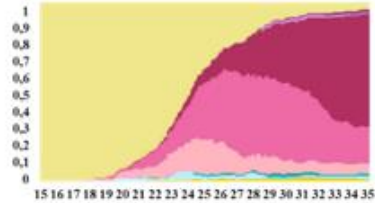
Men

Women

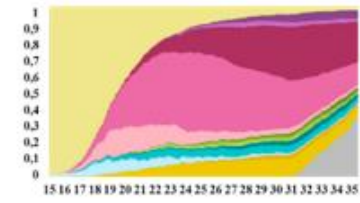
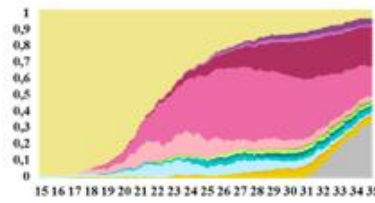
Men

Women

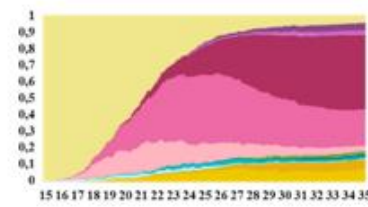
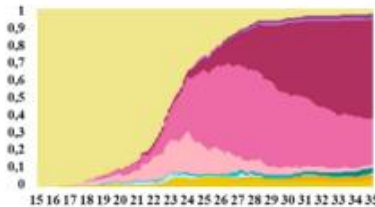
GGs: 1930-39



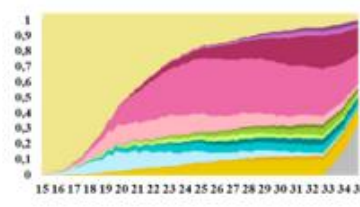
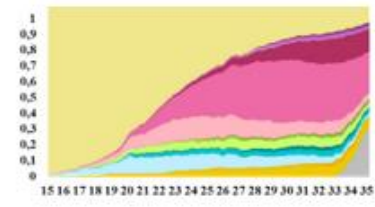
GGs: 1970-79



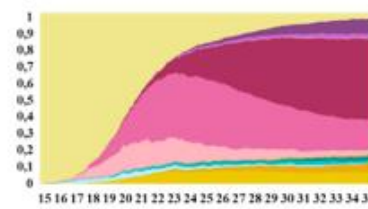
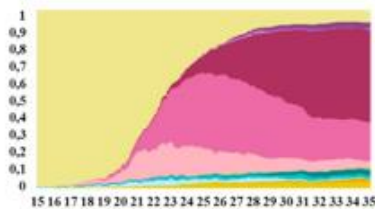
GGs: 1940-49



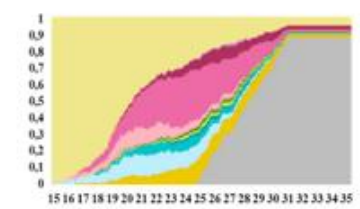
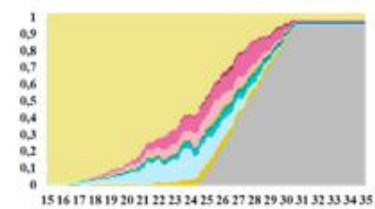
PFS: 1970-79



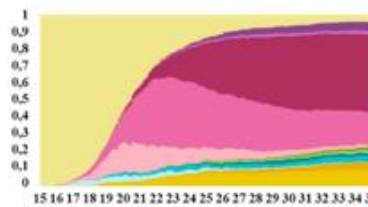
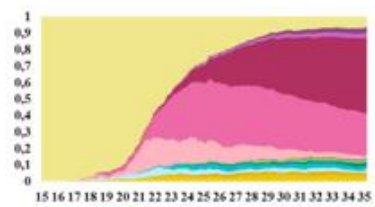
GGs: 1950-59



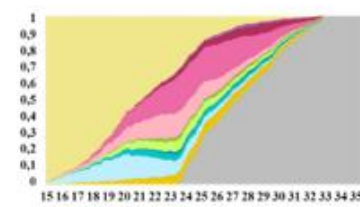
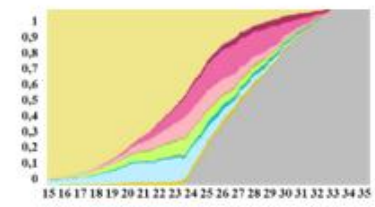
GGs: 1980-86



GGs: 1960-69



PFS: 1980-89



# Conclusion

The research revealed several points about family formation trajectories of Russians:

- women start to entry into first matrimonial events earlier than men
- women stay alone with children more often than men do
- women and men experience equal number of family formation events
- generations born after 1970 started to exhibit de-standardized family formation trajectories
- the number of events for men and women in different generations remains stable

**Matrimonial and reproductive behavior is becoming diverse, proving that Russia fully displays Second Demographic Transition**



NATIONAL RESEARCH  
UNIVERSITY

# Thank you for your attention!

20, Myasnitskaya str., Moscow, Russia, 101000  
Tel.: +7 (495) 628-8829, Fax: +7 (495) 628-7931  
[www.hse.ru](http://www.hse.ru)