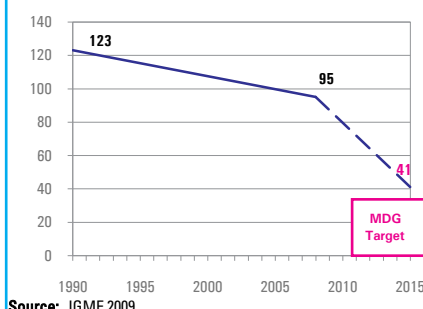


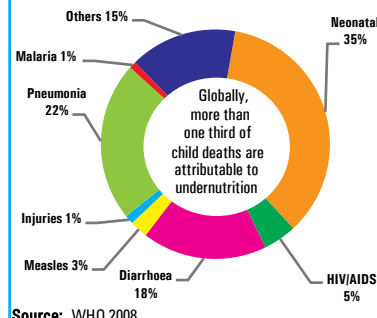
DEMOGRAPHICS

Total population (000)	849	(2008)
Total under-five population (000)	108	(2008)
Total number of births (000)	24	(2008)
Under-five mortality rate (per 1,000 live births)	95	(2008)
Total number of under-five deaths (000)	2	(2008)
Infant mortality rate (per 1,000 live births)	76	(2008)
Neonatal mortality rate (per 1,000 live births)	45	(2004)
HIV prevalence rate (15-49 years, %)	3.1	(2007)
Population below international poverty line of US\$1.25 per day (%)	19	(2002)

Under-five mortality rate
Deaths per 1,000 live births



Causes of under-five deaths, 2004

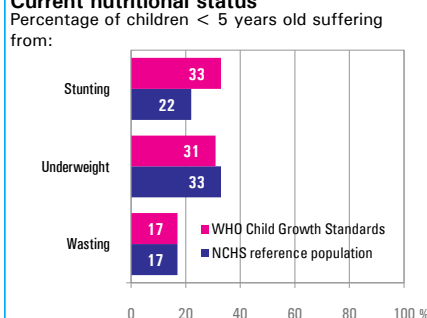


NUTRITIONAL STATUS

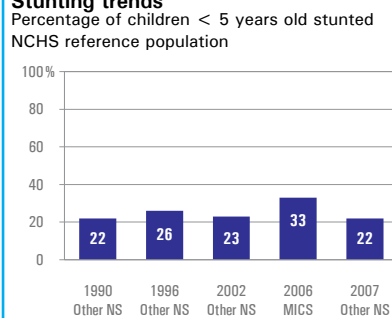
Burden of undernutrition (2008)
WHO Child Growth Standards

Stunted (under-fives, 000):	35	Underweight (under-fives, 000):	33
Share of developing world stunting burden (%):	0.0	Wasted (under-fives, 000):	19
Stunting country rank:	109	Severely wasted (under-fives, 000):	4

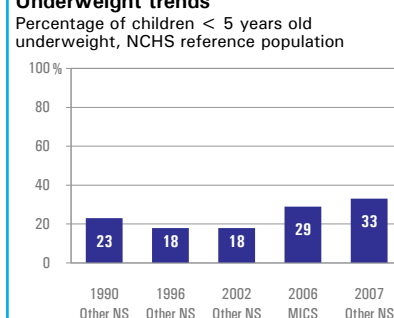
Current nutritional status



Stunting trends



Underweight trends



INFANT AND YOUNG CHILD FEEDING

Infant feeding practices, by age

No Data

- Weaned (not breastfed)
- Breastfed and solid/semi-solid foods
- Breastfed and other milk/formula
- Breastfed and non-milk liquids
- Breastfed and plain water only
- Exclusively breastfed

Exclusive breastfeeding

Percentage of infants < 6 months old exclusively breastfed

