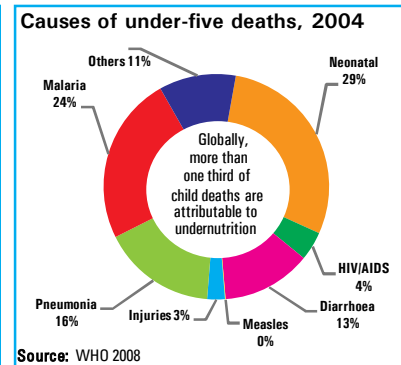
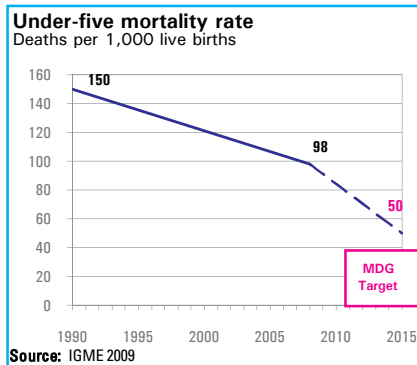


### DEMOGRAPHICS

Total population (000)	6,459	(2008)
Total under-five population (000)	947	(2008)
Total number of births (000)	213	(2008)
Under-five mortality rate (per 1,000 live births)	98	(2008)
Total number of under-five deaths (000)	20	(2008)
Infant mortality rate (per 1,000 live births)	64	(2008)
Neonatal mortality rate (per 1,000 live births)	39	(2004)
HIV prevalence rate (15-49 years, %)	3.3	(2007)
Population below international poverty line of US\$1.25 per day (%)	39	(2006)



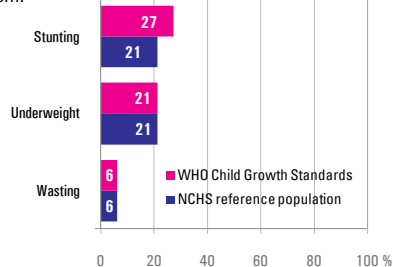
### NUTRITIONAL STATUS

**Burden of undernutrition (2008)**  
WHO Child Growth Standards

Stunted (under-fives, 000):	255	Underweight (under-fives, 000):	194
Share of developing world stunting burden (%):	0.1	Wasted (under-fives, 000):	57
Stunting country rank:	71	Severely wasted (under-fives, 000):	7

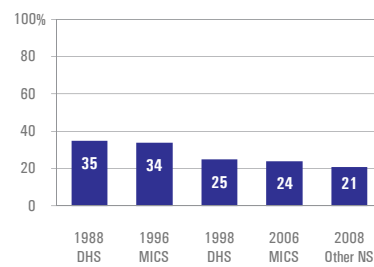
**Current nutritional status**

Percentage of children < 5 years old suffering from:



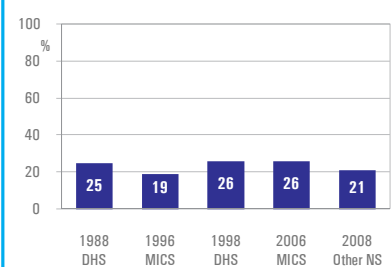
**Stunting trends**

Percentage of children < 5 years old stunted NCHS reference population



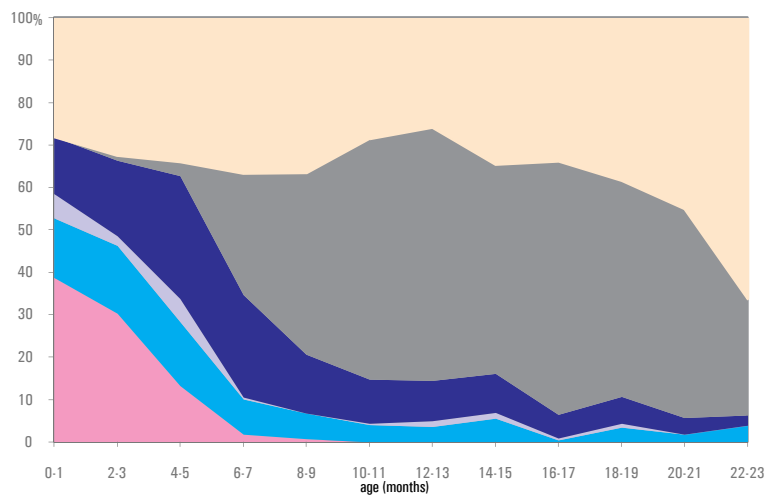
**Underweight trends**

Percentage of children < 5 years old underweight, NCHS reference population



### INFANT AND YOUNG CHILD FEEDING

**Infant feeding practices, by age**



**Exclusive breastfeeding**

Percentage of infants < 6 months old exclusively breastfed

