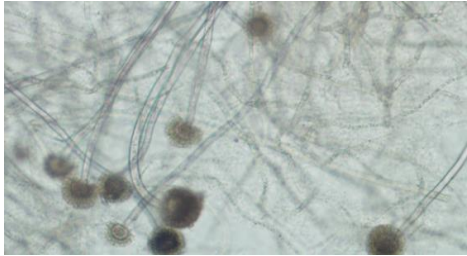

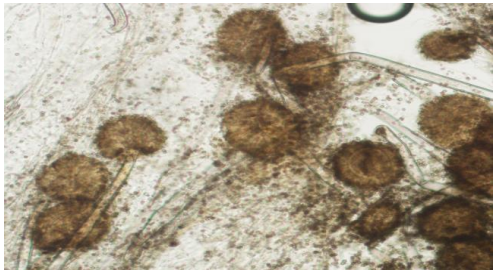


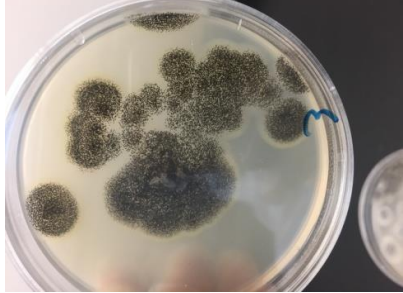


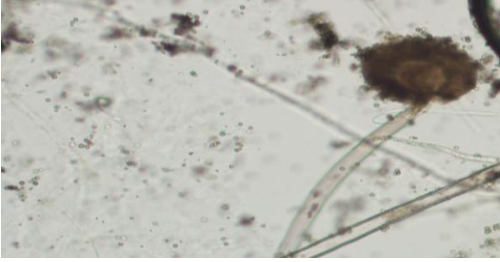
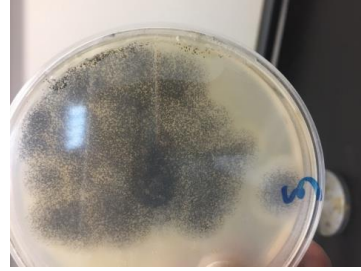


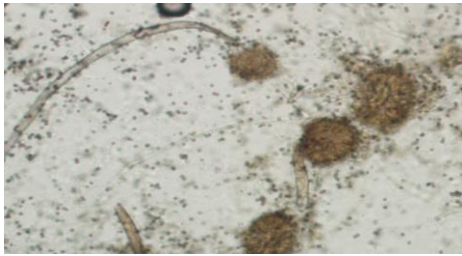
(A) Microscope (40X)	(B) Petri dish
 <p data-bbox="427 647 703 689"><i>A. niger</i> MH111398</p>	 <p data-bbox="949 654 1225 696"><i>A. niger</i> MH111398</p>
 <p data-bbox="411 967 687 1010"><i>A. niger</i> MH111399</p>	 <p data-bbox="970 976 1246 1019"><i>A. niger</i> MH111399</p>
 <p data-bbox="416 1310 687 1352"><i>A. niger</i> MH057541</p>	 <p data-bbox="954 1314 1225 1357"><i>A. niger</i> MH057541</p>
 <p data-bbox="406 1648 683 1691"><i>A. niger</i> MH111400</p>	 <p data-bbox="949 1666 1220 1709"><i>A. niger</i> MH111400</p>



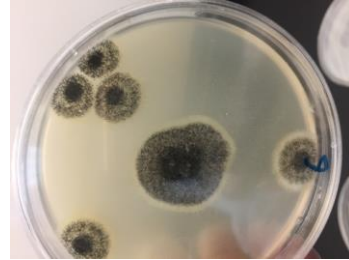
A. niger MH078513



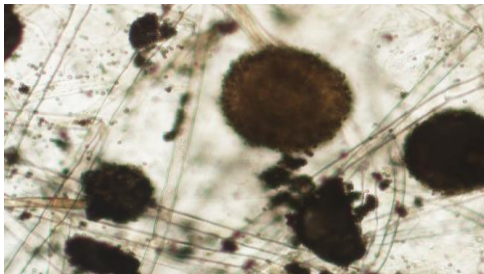
A. niger MH078513



A. niger MH078565.1



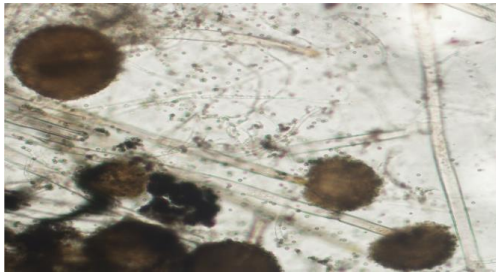
A. niger MH078565.1



A. niger MH111401.1



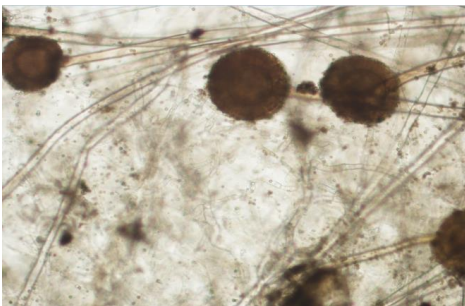
A. niger MH111401.1



A. niger MH078566.1



A. niger MH078566.1



A. niger MH078571.1



A. niger MH078571.1

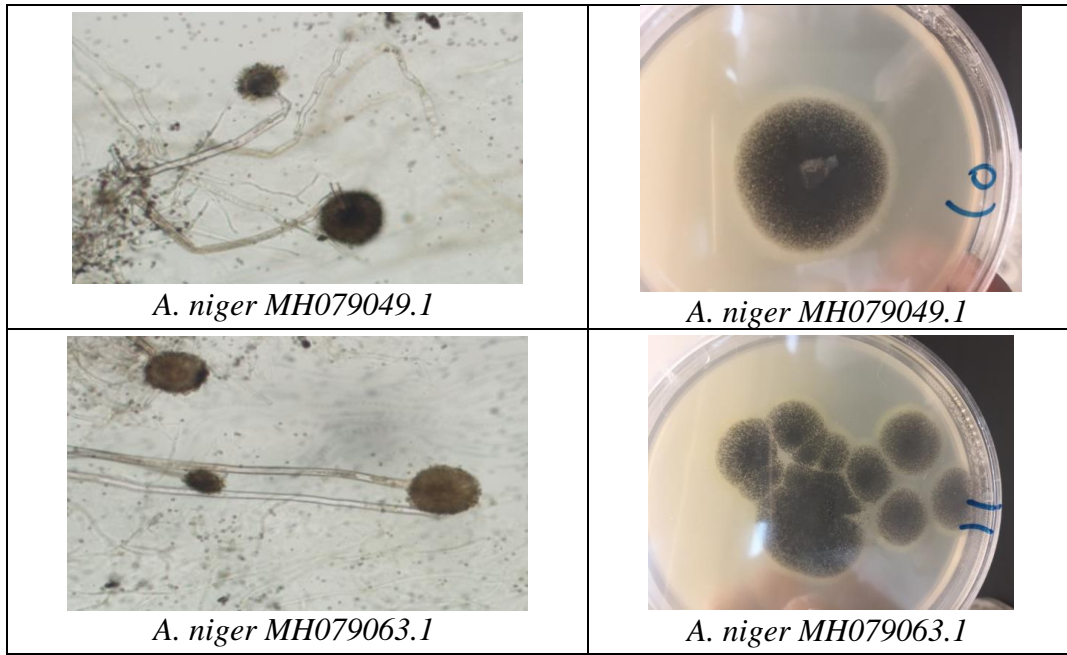


Figure 4. (A) Under microscope (40X) and (B) on a petri dish photo of the 11 *Aspergillus sp.* Isolates producing lipase enzyme and examined in the current study.