



UNIVERSITY
OF WOLLONGONG
AUSTRALIA

UOW in Numbers

December 2022



Contents

—	
RANKINGS	02
—	
STUDENT STATISTICS	06
—	
STUDENT EXPERIENCE	10
—	
STAFF	12
—	
RESEARCH	14
—	
FINANCIAL STATEMENT	16
—	
COMMUNITY ENGAGEMENT	18
—	
ECONOMIC IMPACT	20
—	

World rankings

QUACQUARELLI SYMONDS (QS) WORLD UNIVERSITY RANKINGS

=185

World Ranking

QS SUBJECT RANKINGS

TOP 50

Engineering
(Mineral & Mining)

TOP 100

Engineering
(Civil & Structural)
Materials Science
Nursing
Sports Related Subjects

TOP 150

Archaeology
Chemistry
Engineering (Electrical
& Electronic)
Geography
Law
Philosophy
Statistics & Operational
Research

TOP 200

Earth and Marine Sciences
Education
Engineering (Mechanical,
Aeronautical &
Manufacturing)
Geology
Geophysics

QS SUSTAINABILITY RANKING

85

TIMES HIGHER EDUCATION (THE) WORLD UNIVERSITY RANKINGS

24

Young University Ranking

201-250

World Ranking

THE SUBJECT RANKINGS

TOP 100

Law
Engineering

TOP 150

Arts and Humanities
Physical Sciences

WORLD UNIVERSITY IMPACT RANKING 2020

=70

OTHER MAJOR RANKINGS

201-300

World Rank
Academic Ranking of
World Universities

=186

US News
Best Global Universities
Rankings

195

Aggregate Ranking of
Top Universities

5+ STAR

QS rating

National rankings

10

QS Australian University Ranking

11

QS Australian Sustainability Ranking

12

Times Higher Education Australian Ranking

13

Australian Times Higher Education Impact Ranking

14

Australian Academic Ranking of World Universities

QUALITY INDICATORS FOR LEARNING AND TEACHING

UOW continues to achieve outstanding results in several categories in the Federal Governments 2022 Quality Indicators for Learning and Teaching.

Undergraduate Indicators 1st in NSW

Skills Development

Study Area 2nd in NSW

Creative Arts
Engineering
Nursing
Teacher Education

Postgraduate Indicators 2nd in NSW

Learner Engagement
Skills Development

3rd in NSW

Student Support

Study Area 3rd in NSW

Nursing

GOOD UNIVERSITIES GUIDE 2022/2023

The Good Universities Guide provides independent 5 star performance ratings for every university in Australia. UOW was rated the #2 university in Australia for staff qualifications and achieved a 5 star rating across a number of student indicators.

UNDERGRADUATE

POSTGRADUATE

★★★★★  IN AUSTRALIA

Learning Resources

Medicine

Skills Development

Agriculture &
Environmental Studies

Full Time Employment

Law & Paralegal
Medicine
Psychology

Student Support

Nursing

★★★★★  IN NSW

Full Time Employment

Engineering & Technology

Median Graduate Income

Agriculture &
Environmental Studies

Median Graduate Income

Engineering & Technology

Skills Development

Science and Mathematics

Teaching Quality

Nursing

★★★★★

Full Time Employment

Education & Training

Skills Development

Nursing

Student Support

Agriculture &
Environmental Studies
Nursing

Teaching Quality

Medicine

Median Graduate Income

Humanities, Culture &
Social Sciences

Learner Engagement

Nursing
Science and Mathematics

Skills Development

Engineering & Technology
Nursing

Teaching Quality

Engineering & Technology

Our student population



33,044

2021 total student enrolment

COMMENCING STUDENTS

11,170

Total



8,933

Onshore



2,237

Offshore

CONTINUING STUDENTS

21,874

Total



16,880

Onshore



4,994

Offshore

DOMESTIC UNDERGRADUATE SOCIAL INCLUSION/PARTICIPATION RATE



17.35%

Students of low socio economic status



3.13%

Domestic students identifying as Aboriginal and/or Torres Strait Islander



29.15%

Students from regional and remote areas



11.11%

Students with a disability

STUDENT TYPE

DOMESTIC



INTERNATIONAL



GENDER

Male	15,806
Female	17,209
Unspecified	29

* Includes domestic students studying at offshore campuses

ENROLMENTS



23,723

Undergraduate



1,489

Higher degree research



7,116

Postgraduate coursework



716

Non-award



341

Degrees offered

- Onshore** from 9 locations (Wollongong, South Western Sydney, Innovation Campus, Sydney CBD, Shoalhaven, Batemans Bay, Bega, Southern Sydney, Southern Highlands)
- Offshore** from Malaysia, Singapore, Hong Kong, Dubai
- Online**

UOW GLOBAL ENTERPRISES DEGREE, SUB-DEGREE, DIPLOMA, VOCATIONAL, FOUNDATION AND LANGUAGE ENROLMENTS*

UOW College Australia enrolments	1,592
UOW College Hong Kong enrolments	2,584
UOWD College enrolments	4,113
UOW Malaysia KDU	7,213

*These UOW Global Enterprises enrolments are non-UOW accredited and therefore excluded from other statistical breakdowns that appear within this publication

DOMESTIC ENROLMENTS BY HOME REGION

Illawarra	9,013	Northern Sydney	473
Southern Sydney	3,664	ACT	438
Other NSW	2,871	Central Sydney	352
South Western Sydney	2,277	Overseas	108
Western Sydney	780	Inner Western Sydney	98
Interstate	648		

ONSHORE ENROLMENTS BY FACULTY

Faculty of the Arts, Social Sciences and Humanities	8,978
Faculty of Business and Law	5,607
Faculty of Science, Medicine and Health	5,409
Faculty of Engineering and Information Sciences	4,872
Enabling enrolments delivered through UOW College	876
Non-faculty enrolments	71

DEGREE
COMPLETIONS
BY YEAR

2021	8,468
2020	8,342
2019	7,795
2018	7,711
2017	7,227
2016	7,050
2015	6,687
2014	7,465
2013	7,196
2012	7,009

UOW ALUMNI



176,379

Cumulative number of alumni



199

Different countries that our alumni originate from



165

Different countries that are home to our alumni

Global reach

INTERNATIONAL ENROLMENTS BY REGION

Southern & Central Asia	3,928	North West Europe	135
South East Asia	3,406	Southern & Eastern Europe	126
North East Asia	2,377	Oceania & Antarctica	34
North Africa & Middle East	1,811		
Sub-Saharan Africa	271		
Americas	234		

WHERE UOW STUDENTS STUDY

ONSHORE

Wollongong
22,356

- UOW Online Campus
908

- Metropolitan & Regional Campuses
2,549

OFFSHORE

- Dubai
3,613

- Other
3,618

STUDENT MOBILITY



321

Domestic students




37

International students participated in 2022*

*This figure includes both incountry mobility and Global Learning Online programs

Student surveys

SECTOR-WIDE SURVEYS (ComparED – DEC 2022)





-  **80.1%**
Undergraduate Skills Development Experience (SES)
(compared to national average of 78.7%)
-  **74.1%**
Undergraduate Support Services (SES)
(compared to national average of 73.1%)
-  **91.7%**
Employers' overall satisfaction with UOW graduates (#1 in Australia, compared to national average of 84.7%)

Engagement & employability

PRIMARY AND SECONDARY SCHOOL OUTREACH

-  **63**
Secondary schools engaged
-  **8,097**
Number of Secondary and Primary school students involved
-  **195**
Primary schools engaged

TRANSITION, RETENTION AND PEER PROGRAMS

-  **1,964**
Participant count in Peer Assisted Learning (PAL) supported subjects
-  **2,241**
Participant count in Induction and Transition programs
-  **6,238**
PAL contact hours
-  **1,130**
Participant count in Retention and Re-engagement programs

GRADUATE EMPLOYMENT (GOS 2022)

- 80.2%**
UOW domestic undergraduates in full time employment
(compared to the national average of 79.0%)



Staff mix

	FTE	Headcount
Academic staff	959	1,065
Professional Services staff	1,253	1,379
Total	2,212	2,444

*2021 government reported figures as at 31 March 2021

STAFF

33.4%

Female Professors



85.6%

Academic staff with PhDs



16

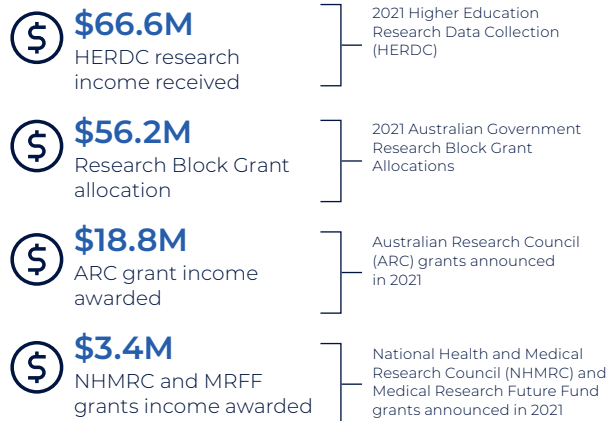
Distinguished Professors

- Professor Gordon Wallace
- Professor Xiaolin Wang
- Professor Shujun Zang
- Professor Stuart Kaye
- Professor Noel Cressie
- Professor Zhengyi Jiang
- Professor Anatoly Rozenfeld
- Professor Willy Susilo
- Professor Aidan Sims
- Professor Nicholas Dixon
- Professor Bert Roberts
- Professor Xu-Feng Huang
- Professor Antoine van Oijen
- Professor Sharon Robinson
- Professor David Adams
- Professor Tony Okely

STAFF

Research

RESEARCH INCOME



RESEARCH EXCELLENCE

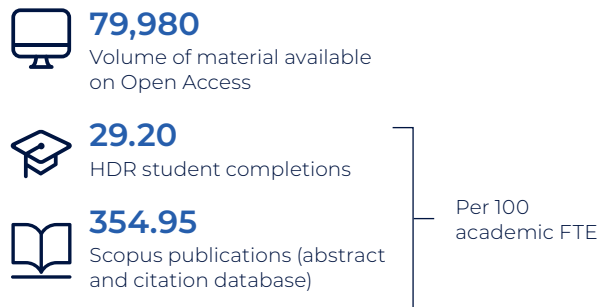
91% OF UOW DISCIPLINES

At, above or well above World Standard
(based on 2 and 4 digit FORs within Excellence in Research for Australia 2018)

MAJOR RESEARCH ENTITIES

- Australian Institute for Innovative Materials (AIIM)
- Early Start
- Illawarra Health & Medical Research Institute (IHMRI)
- SMART Infrastructure Facility
- Sustainable Buildings Research Centre (SBRC)

RESEARCH IMPACT



COMMERCIALISATION



UNIVERSITY RESEARCH INSTITUTES

- Molecular Horizons
- Australian National Centre for Ocean Resources & Security (ANCORS)

Financial statement

SOURCE:
UOW ANNUAL
REPORT 2021

	Consolidated*		Parent [^]	
	\$'000 2021	\$'000 2020	\$'000 2021	\$'000 2020
OPERATING REVENUE				
Australian Govt Grants/HECS	283,585	278,265	283,585	278,265
International Student Fees	200,048	280,492	97,634	144,558
Research grants	87,337	73,423	87,337	73,423
Research-other	37,933	36,844	37,933	36,844
Capital Grants	0	342	0	342
Other	205,738	115,895	134,157	86,911
Total Operating Revenue	814,641	785,261	640,646	620,343
OPERATING EXPENSES				
Salaries	444,052	472,776	367,676	382,677
Non-salaries	362,241	361,293	267,610	290,446
	806,293	834,069	635,286	673,123
Operating result	8,348	-48,808	5,360	-52,780
Operating Margin	1.0%	-6.2%	0.8%	-8.5%
SUMMARY STATEMENT OF FINANCIAL POSITION				
Total Assets	2,242,522	2,694,095	1,796,669	2,241,706
Total Liabilities	1,318,157	1,619,945	1,163,979	1,445,691
Net Assets	924,365	1,074,150	632,690	796,015

* UOW figures including figures from UOW's controlled entities (UOW Global Enterprises, UOW Pulse).

[^] UOW figures only

Community engagement



UOW SCIENCE SPACE

*Closed 27 June to 17 October 2021 (Covid) 31% of year

School Students (physical excursions and workshops)	5,909
School Students (virtual excursions and workshops)	3,320
Public/community	22,267
Other activities (holiday workshops, family and adult Science events)	2,322
Groups (vacation care, seniors, scouts)	758
Total number of physical visitors 2021	34,648



UOW PULSE SPORTS AND FITNESS

Recreation and Aquatic Centre	187,706
Sports Hub	62,097
Outdoor sporting grounds	202,000
Uni Active Innovation Campus	55,197
Total visitors	507,000



EARLY START DISCOVERY SPACE 2021

*Closed 27 June to 17 October 2021 (Covid) 31% of year

Membership visits	34,517
Public general visits	24,737
Groups and other activities	1,877
Total number of physical visitors	61,131
Online engagement during lockdown	1,130



ENGAGEMENT CENTRES

Number of engagement centres covering regional and remote NSW/ ACT	51
Number of professional learning participants	3,042
Number of workshops	86

Economic impact

UOW TOTAL ECONOMIC CONTRIBUTION (2018 \$M)

	Illawarra	NSW	Australia
Gross output	\$1,626	\$1,803	\$2,514
Value added	\$931	\$1,015	\$1,389
Labour income	\$676	\$718	\$893
Employment (FTE)	7,666	8,331	10,938

ECONOMIC CONTRIBUTION OF UOW STUDENT EXPENDITURE (2018 \$M)

	Illawarra	NSW	Australia
Gross output	\$685	\$804	\$1,299
Value added	\$334	\$389	\$646
Labour income	\$192	\$221	\$341
Employment (FTE)	3,656	4,102	5,914

UOW'S RIPPLE EFFECTS (MULTIPLIERS)



1.8

Every 1,000 FTE's created by UOW related expenditure supports another 800 FTEs elsewhere in the economy.



1.4

Every \$1M in household income generated by UOW related expenditure generates another \$400,000 of income elsewhere in the economy.



2.0

Every \$1M in gross output as a result of UOW related expenditure generates another \$1M of gross output elsewhere in the economy.

Social impact

250+

different types of paid and volunteer roles through UOWx

2000+

students claim their co-curricular involvement each year

UOWx
Be extraordinary

The University of Wollongong is a global leader in discovery and learning, working to transform people and the world we live in.

We have built a reputation as an enterprising institution with a multi-disciplinary approach to research, underpinned by strong industry partnerships and personalised style. Originally established as a provider of technical education required for the region's steel industry, the University now offers a wide range of courses across four faculties.

CAMPUSES

- Wollongong Campus
- South Western Sydney
- Shoalhaven
- Bega
- Batemans Bay
- Southern Highlands
- Southern Sydney
- Sydney (CBD)
- Innovation Campus, Wollongong

FACULTIES

- Business and Law
- Engineering and Information Sciences
- Science Medicine and Health
- The Arts, Social Sciences and Humanities

WHOLLY OWNED SUBSIDIARY CAMPUSES

- University of Wollongong in Dubai
- UOW College Hong Kong
- UOW Malaysia KDU
- UOW College Australia

HISTORY

1951

Established as a Division of the then NSW University of Technology

1961

The Division became the Wollongong College of the University of NSW

1975

Incorporated by NSW Parliament as an independent institution

1982

Amalgamated with Wollongong Institute of Higher Education, sparking a period of rapid growth

1993

UOW in Dubai

2008

Innovation Campus opens

2017

UOW College Hong Kong launches
UOW Liverpool campus opens

2018

UOW Malaysia KDU

2020

Dubai launches new campus

2022

Letter of Intent signed between UOW and Gujarat International Finance Tec-City (GIFT City) to establish location for teaching, research and industry engagement in GIFT City.



UOW IN NUMBERS

uow.edu.au/about



UNIVERSITY
OF WOLLONGONG
AUSTRALIA

Content compiled by the Information Management Unit.
imts@uow.edu.au

The University of Wollongong attempts to ensure the information contained in this publication is correct at the time of production (February 2023); however, sections may be amended without notice by the University in response to changing circumstances or for any other reason. Check with the University for any updated information. University of Wollongong CRICOS: 00102E, TEQSA Provider ID: PRV12062, ABN: 61 060 567 686.