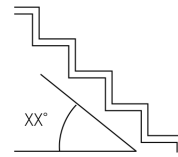
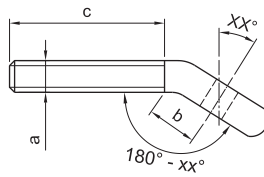


ÖSE MIT AUSSENGEWINDE, GEBOGEN
EYE WITH EXTERNAL THREAD, BENDED



Artikelnummer Rechtsgewinde Part number RH thread	Artikelnummer Linksgewinde Part number LH thread	a	b	c	XX*
885-0600-XX	886-0600-XX	M6	14	47	05° - 45°
885-0800-XX	886-0800-XX	M8	21	57	05° - 45°
885-1000-XX	886-1000-XX	M10	27	63	05° - 45°
885-1200-XX	886-1200-XX	M12	30	80	05° - 45°

***Werkstoff 1.4401 | XX° für die Angabe der Treppensteigung**
Material AISI 316 | XX*details for pitch of stairs

Alle Angaben in Millimetern
All dimensions in millimeters