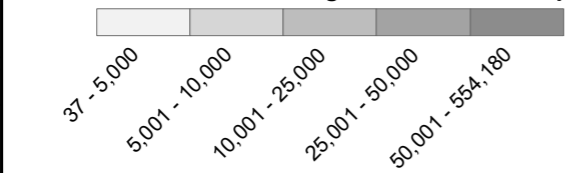
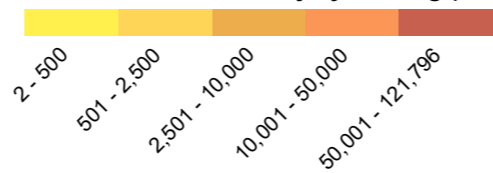


Arrival IDPs & Returned Migrants from Abroad per District



Country Province District

No Clinic or Clinic >2 Hrs away by Walking (Individuals)



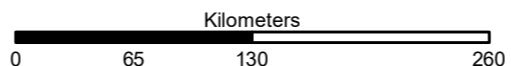
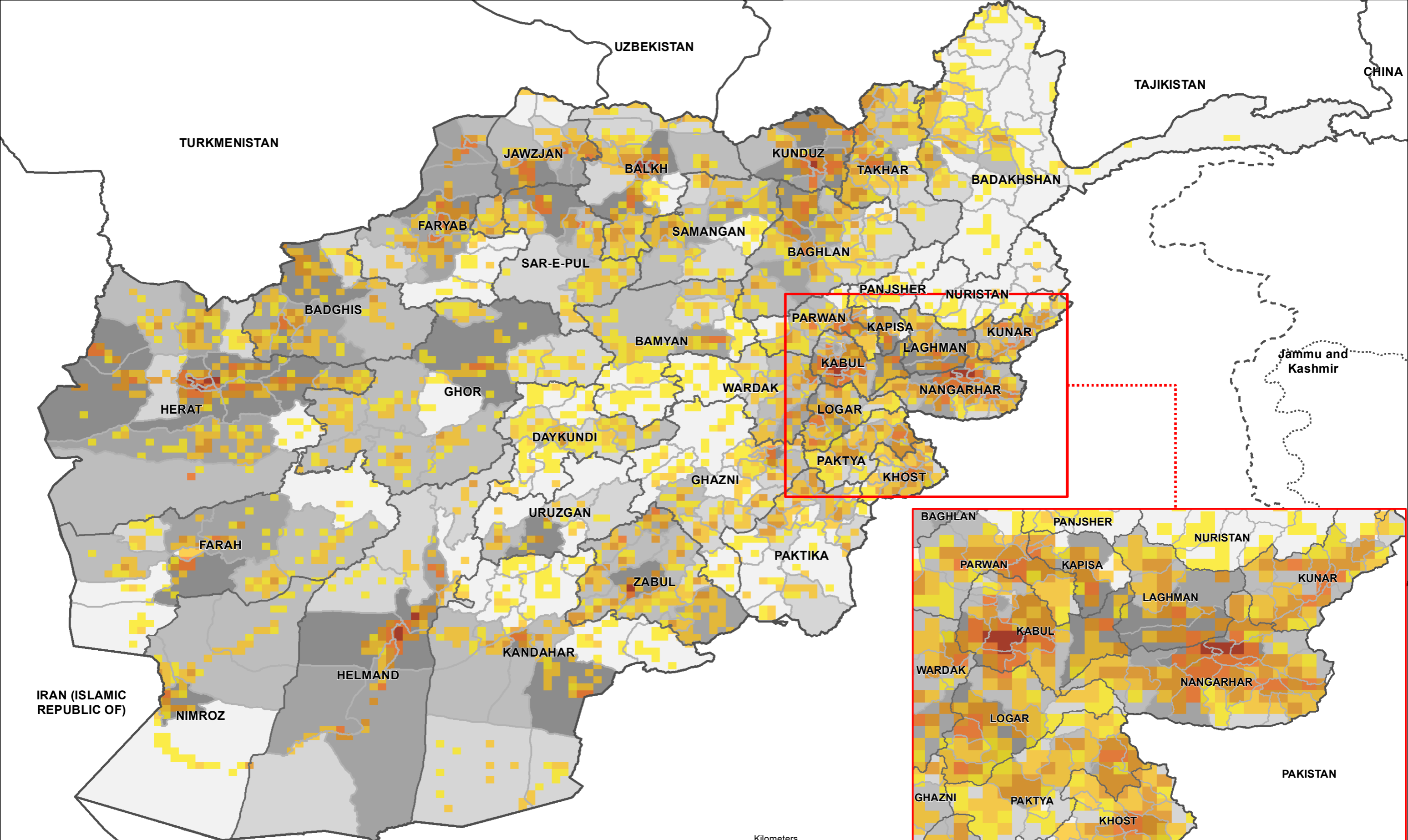
Each Grid Covers 10 Square KM

DTM AFGHANISTAN

Community-Based Needs Assessment (CBNA) Round 14 | Overview
| Arrival IDPs & Returned Migrants from Abroad | No Clinic in Village
or Clinic >2 Hrs away by Walking | December 2021



1 cm = 42 km www.displacement.iom.int/afghanistan | email: dtmafghanistan@iom.int



Data Source: IOM, AGCHO, AIMS, CSO, OSM This map is for illustration purposes only. Names & boundaries on this map do not imply official endorsement or acceptance by IOM. Dotted line represents approximately the Line of Control in Jammu & Kashmir agreed upon by India and Pakistan. The final status of Jammu & Kashmir has not yet been agreed upon by the parties.