



Title	Comparative study of transgenic <i>Brachypodium distachyon</i> expressing sucrose:fructan 6-fructosyltransferases from wheat and timothy grass with different enzymatic properties
Author(s)	Tamura, Ken-ichi; Sanada, Yasuharu; Tase, Kazuhiro; Kawakami, Akira; Yoshida, Midori; Yamada, Toshihiko
Citation	Planta, 239(4), 783-792 <a href="https://doi.org/10.1007/s00425-013-2016-8">https://doi.org/10.1007/s00425-013-2016-8</a>
Issue Date	2014-04-01
Doc URL	<a href="http://hdl.handle.net/2115/57880">http://hdl.handle.net/2115/57880</a>
Rights	The final publication is available at <a href="http://link.springer.com">link.springer.com</a>
Type	article (author version)
File Information	Text_131108_Tamura.pdf



[Instructions for use](#)

1 **Authors:** Ken-ichi Tamura<sup>1</sup>, Yasuharu Sanada<sup>1</sup>, Kazuhiro Tase<sup>1</sup>, Akira Kawakami<sup>2</sup>,

2 Midori Yoshida<sup>1</sup>, Toshihiko Yamada<sup>3</sup>

3 **Title:** Comparative study of transgenic *Brachypodium distachyon* expressing

4 sucrose:fructan 6-fructosyltransferases from wheat and timothy grass with different

5 enzymatic properties.

6 **Affiliations and addresses:**

7 <sup>1</sup> NARO Hokkaido Agricultural Research Center, 1 Hitsujigaoka, Toyohira, Sapporo

8 062-8555, Japan

9 <sup>2</sup> NARO Kyushu Okinawa Agricultural Research Center, 2421 Suya, Koshi, Kumamoto,

10 861-1192, Japan

11 <sup>3</sup> Field Science Center for Northern Biosphere, Hokkaido University, Kita 11, Nishi 10,

12 Kita, Sapporo 060-0811, Japan

13 **E-mail address, telephone and fax numbers of corresponding author:**

14 Ken-ichi Tamura

15 tamuken@affrc.go.jp, +81-11-857-9273 (tel and fax)

16

1 **Abstract**

2 Fructans can act as cryoprotectants and contribute to freezing tolerance in plant species,  
3 such as in members of the grass subfamily Pooideae that includes Triticeae species and  
4 forage grasses. To elucidate the relationship of freezing tolerance, carbohydrate  
5 composition and degree of polymerization (DP) of fructans, we generated transgenic  
6 plants in the model grass species *Brachypodium distachyon* that expressed cDNAs for  
7 sucrose:fructan 6-fructosyltransferases (6-SFTs) with different enzymatic properties;  
8 one cDNA encoded PpFT1 from timothy grass (*Phleum pratense*), an enzyme that  
9 produces high DP levans, a second cDNA encoded wft1 from wheat (*Triticum*  
10 *aestivum*), an enzyme that produces low DP levans. Transgenic lines expressing *PpFT1*  
11 and *wft1* showed retarded growth; this effect was particularly notable in the *PpFT1*  
12 transgenic lines. When grown at 22°C, both types of transgenic line showed little or no  
13 accumulation of fructans. However, after a cold treatment, *wft1* transgenic plants  
14 accumulated fructans with DP = 3 – 40, whereas *PpFT1* transgenic plants accumulated  
15 fructans with higher DPs (20 to the separation limit). The different compositions of the

1 accumulated fructans in the two types of transgenic line were correlated with the  
2 differences in the enzymatic properties of the overexpressed 6-SFTs. Transgenic lines  
3 expressing *PpFTI* accumulated greater amounts of mono- and disaccharides than wild  
4 type and *wft1* expressing lines. Examination of leaf blades showed that after cold  
5 acclimation *PpFTI* overexpression increased tolerance to freezing; by contrast, the  
6 freezing tolerance of the *wft1* expressing lines was the same as that of wild type plants.  
7 These results provide new insights into the relationship of the composition of  
8 water-soluble carbohydrates and the DP of fructans to freezing tolerance in plants.  
9

- 1 **Key words:** *Brachypodium*, Degree of polymerization, Freezing tolerance, Fructan, Fructosyltransferase,  
2 Timothy, Wheat.
- 3 **Abbreviations:**
- 4 ***DP***  
5 Degree of polymerization
- 6 ***DTT***  
7 Dithiothreitol
- 8 ***FEH***  
9 Fructan exohydrolase
- 10 ***1-FFT***  
11 Fructan:fructan 1-fructosyltransferase
- 12 ***HPAEC-PAD***  
13 High-performance anion exchange chromatography with pulsed amperometric detection
- 14 ***HPLC***  
15 High-performance liquid chromatography
- 16 ***LE***  
17 Ligand exchange
- 18 ***RI***  
19 Refractive index
- 20 ***SE***  
21 Size exclusion
- 22 ***1-SST***  
23 Sucrose:sucrose 1-fructosyltransferase
- 24 ***6-SFT***  
25 Sucrose:fructan 6-fructosyltransferase
- 26 ***PFT***  
27 Transgenic line expressing *PpFTI*
- 28 ***WFT***  
29 Transgenic line expressing *wft1*
- 30 ***WT***  
31 Wild type

## 1 **Introduction**

2 Fructans are soluble fructose polymers derived from sucrose that are synthesized and  
3 assimilated as storage carbohydrates during photosynthesis in many plant species. The  
4 structures of fructans vary widely among plant species (Vijn and Smeekens 1999) and  
5 this variation is exemplified in plants belonging to the tribes Poeae and Triticeae  
6 (family Poaceae, subfamily Pooideae). In the Poeae, timothy grass (*Phleum pratense*),  
7 orchard grass (*Dactylis glomerata*), and big blue grass (*Poa secunda*) accumulate a  
8 simple levan comprised of linear  $\beta(2,6)$ -linked fructose units with a terminal glucose  
9 (Chatterton et al. 1993; Bonnett et al. 1997; Chatterton and Harrison 1997; Cairns et al.  
10 1999). However, Triticeae species, such as wheat (*Triticum aestivum*) and barley  
11 (*Hordeum vulgare*), produce mixed levans, called graminans, composed of  
12 branched-type fructans containing  $\beta(2,6)$ - and  $\beta(2,1)$ -linked fructose residues (Carpita  
13 et al. 1989; Bonnett et al. 1997). The degree of polymerization (DP) of fructans also  
14 differs among plant species (Vijn and Smeekens 1999). The DPs of the major  
15 components of wheat fructan range from 3 to 20, while some varieties accumulate  
16 fructans with a higher DP during the winter (Yoshida and Tamura 2010). By

1 comparison, the DP of the fructans found in timothy grass may be 90 in leaf tissue  
2 (Cairns et al. 1999) and as high as 260 in the stem base (Grotelueschen and Smith  
3 1968). The variation in structure and DP of fructans arises from differences in the  
4 substrate specificities and the combined actions of different fructosyltransferases. In  
5 timothy grass, levans with high DPs are thought to be produced by sucrose:fructan  
6 6-fructosyltransferase (6-SFT) which transfers fructosyl units from sucrose to a target  
7 sucrose or fructan molecule with a  $\beta(2,6)$ -linkage (Cairns et al. 1999; Tamura et al.  
8 2009). In wheat, graminans are produced by the combined activities of 6-SFT,  
9 sucrose:sucrose 1-fructosyltransferase (1-SST) and fructan:fructan  
10 1-fructosyltransferase (1-FFT) (Kawakami and Yoshida et al. 2002, 2005). A cDNA for  
11 a protein with 6-SFT activity has been identified in timothy grass as *PpFT1* (Tamura et  
12 al. 2009) and in wheat as *wft1* (Kawakami and Yoshida 2002). Comparison of the  
13 activities of recombinant PpFT1 and Wft1 enzymes identified quite different  
14 enzymatic properties as follows: (i) When sucrose is an only substrate, PpFT1 mainly  
15 synthesizes a  $\beta(2,6)$ -linked, linear fructan series, whereas Wft1 preferentially uses

1 1-kestose ( $\beta(2,1)$ -linked fructan with DP = 3 produced by sub-activity of Wft1) as an  
2 acceptor and generates branched fructans ( $\beta(2,1)$ - and  $\beta(2,6)$ -linked) in addition to a  
3  $\beta(2,6)$ -linked, linear fructan series. (ii) PpFT1 has a higher affinity for high DP  
4 fructans as acceptors than Wft1; thus, PpFT1 produces longer fructans than Wft1. (iii)  
5 PpFT1 has a lower substrate affinity for sucrose than Wft1 (Kawakami and Yoshida  
6 2002; Tamura et al. 2009).

7           During cold acclimation before winter, fructans are accumulated in Triticeae  
8 and forage grass species. Later they may be used as an energy source under snow  
9 during winter. In addition to their role as carbohydrate storage molecules, fructans  
10 have been suggested to have a role as a cryoprotectant and to directly or indirectly  
11 contribute to freezing tolerance at the cellular level (Valluru and Van den Ende 2008;  
12 Livingston et al. 2009). Currently, several possible mechanisms for fructan activity  
13 against freezing damage have been proposed: membrane protection, reduction in water  
14 potential, freezing point depression, and scavenging of reactive oxygen species (ROS)  
15 (Gaudet et al. 1999; Valluru and Van den Ende 2008; Livingston et al. 2009; Van den



1 Ende and Valluru 2009; Keunen et al. 2013). Recently, it is hypothesized that small  
2 fructans act as phloem-mobile signaling compounds under stress (Van den Ende 2013).  
3 Cryoprotectant activity is thought to differ among fructans with different structures and  
4 different DPs. For example, Cacela and Hinch (2006) found increased protection of  
5 dry model membranes with an increase in the DP of inulin (a  $\beta(2,1)$ -linked, linear  
6 fructan) from 2 to 5. However, fructans with DPs between 7 and 17 from oat and rye  
7 do not provide cryoprotection of liposomes, whereas smaller fructans do have a  
8 protective activity (Hinch et al. 2007). Vereyken et al. (2003) reported that a bacterial  
9 levan with a DP of approximately 125 has a protective activity in liposomes during  
10 air-drying. Dionne et al. (2009) reported that freezing tolerance in bluegrass ecotypes  
11 was correlated with the amount of higher DP fructans rather than with lower DP  
12 fructans. Moreover, simple sugars such as glucose and sucrose, which are accumulated  
13 before winter and are the products of hydrolysis of fructans, are also reported to be  
14 involved in freezing tolerance and play crucial roles in ROS homeostasis (Valluru and  
15 Van den Ende 2008; Livingston et al. 2009; Bolouri-Moghaddam et al. 2010).

1           The *in vivo* physiological roles of fructan can be investigated using  
2 transgenic plants. Thus, transgenic tobacco plants overexpressing Bp6-SFT from  
3 *Bromus pictus* and 1-SST from *Lactuca sativa* accumulate fructans and show increased  
4 freezing tolerance compared to wild type plants that do not accumulate fructans (Li et  
5 al. 2007; del Viso et al. 2011). Hisano et al. (2004) generated transgenic *Lolium*  
6 *perenne*, a species that normally accumulates fructans, that overexpressed *wft1* (6-SFT  
7 cDNA) and *wft2* (1-SST cDNA) from wheat; they found an increase in fructan  
8 accumulation and freezing tolerance at the cellular level.

9           In this study, we sought to examine the relationship of freezing tolerance,  
10 carbohydrate composition and the DP of fructans. We generated two different types of  
11 transgenic line of the model species *Brachypodium distachyon* by inserting the 6-SFT  
12 cDNA *PpFT1* from timothy grass or *wft1* from wheat. *B. distachyon* is closely related  
13 to timothy grass and wheat but does not have fructosyltransferases (Li et al. 2012). The  
14 inserted gene was expressed and the freezing tolerance of the two transgenic types was  
15 compared with regard to their accumulation of fructans with different structures and

1 DPs, and to the levels of water-soluble carbohydrates.

2

### 3 **Materials and methods**

#### 4 Plant materials

5 A *PpFTI* cDNA (AB436697, Tamura et al. 2009) or a *wft1* cDNA (AB029887,  
6 Kawakami and Yoshida 2002) coding an enzyme that works as sucrose:fructan  
7 6-fructosyltransferase (6-SFT) in plant cells with different properties described in the  
8 introduction was inserted into the Ti-based vector pMLH7133 (Mitsuhara et al. 1996),  
9 downstream of the maize ubiquitin promoter (Christensen and Quail 1996) that was  
10 substituted for the CaMV 35S promoter to ensure a high level of expression of the gene  
11 in grass. The resulting plasmids were used for transformation of the *Brachypodium*  
12 *distachyon* diploid inbred line ‘Bd21-3’ by the *Agrobacterium*-mediated method using  
13 a previously reported protocol (Vogel and Hill 2008) except that *Agrobacterium* strain  
14 EHA101 was used. Regenerated T<sub>0</sub> plants with hygromycin resistance were screened  
15 for the presence and expression of the transgene. T<sub>1</sub> generation lines were screened by

1 an analysis to detect fructans. For the *wft1* expressing lines, homozygous T<sub>3</sub> lines were  
2 used for subsequent analyses. For the *PpFTI* expressing lines, homozygous plants  
3 could not be generated; therefore, only transgenic plants from T<sub>3</sub> heterozygous lines  
4 were used after PCR confirmation of the genotype. Plants were grown in cell pots (3.5  
5 × 3.5 cm) under normal temperature conditions of 10 hours light, 100 μmol m<sup>-2</sup> s<sup>-1</sup>  
6 PFD, and 22°C for 7 weeks or under cold acclimation conditions of 8 hours light, 75  
7 μmol m<sup>-2</sup> s<sup>-1</sup> PFD, 22°C for 8 weeks and 4°C for 5 weeks. Plant height and fresh  
8 weight were measured after growth under normal temperature conditions.

9

#### 10 Carbohydrate extraction and analysis

11 Total water-soluble carbohydrates were extracted from 20-50 mg of fully expanded  
12 leaves by boiling for 1 hour in 500 μl - 1 ml deionized water. After filtration, the  
13 qualitative analysis of carbohydrate profiles in tissues were analyzed by  
14 high-performance anion exchange chromatography and pulsed amperometric detection  
15 (HPAEC-PAD) (DX-500, Dionex) with a Carbo Pac PA-1 anion-exchange column

1 (Dionex) as described by Tamura et al. (2009). Glucose, fructose, sucrose,  
2 1-kestotriose (Wako Chem.) and 6-kestotriose (Iizuka et al. 1993) were used for known  
3 standards to identify peaks. Products of the Wft1 and PpFT1 recombinant enzyme  
4 generated by *Pichia pastoris* with sucrose (Tamura et al. 2009) were used as standards  
5 for polymerized fructans. Extracted sugar solutions were treated with mild acid or  
6 fructan exohydrolase (FEH) to degrade fructans. Mild acid treatment was performed  
7 using 0.06 N HCl at 70°C for 1 hour. Recombinant enzyme solution of Pp6-FEH1  
8 produced by *P. pastoris* prepared as in Tamura et al. 2011 (0.1 mg/ml) was incubated  
9 with the extracted sugar solution at 30°C for 13 hours in 20 mM citrate-phosphate  
10 buffer (pH 5.2). The quantitative measurements of carbohydrate contents were  
11 performed according to the method as described by Yoshida et al. (1998). The filtrated  
12 carbohydrate solution was measured by high-performance liquid chromatography  
13 (HPLC) using Shodex KS-802 and KS-803 columns with the size exclusion (SE) and  
14 ligand exchange (LE) separation mode (Showa Denko), and an L-2490 refractive index  
15 (RI) detector (Hitachi). Propylene glycol (1 mg ml<sup>-1</sup>) was used as the internal standard

1 to control the extraction efficiency.

2

3 Assay of fructosyltransferase activities in crude enzymatic extracts

4 Crude enzymatic extracts were prepared using 20 mM citrate-phosphate buffer (pH

5 5.2) containing 1 mM dithiothreitol (DTT) and 0.2 to 1.0 g of shoots from plants

6 grown under normal temperature conditions. Following centrifugation at 8000 g for 15

7 min, proteins in the resulting supernatants were concentrated by precipitation with 70%

8 ammonium sulfate. The pellets were dissolved in 0.1 to 0.5 ml of 20 mM

9 citrate-phosphate buffer (pH 5.2) with 1 mM DTT and desalted using a Biospin-30

10 column (Bio-Rad). Twenty  $\mu\text{l}$  of enzymatic solution including ca  $0.7 \mu\text{g} \mu\text{l}^{-1}$  of protein

11 were incubated with 20  $\mu\text{l}$  of a solution containing 2 M sucrose, 0.2% bovine serum

12 albumin, 20 mM citrate-phosphate buffer, and 1 mM DTT at 37°C for 4 hours. The

13 reaction was terminated at 95°C for 3 min. The enzymatic products were analyzed by

14 HPAEC-PAD as described above.

15

1 Freezing tolerance assay

2 Fully expanded leaf blades from each plant were used to test freezing tolerance. Two or  
3 three leaf blade segments of approximately 2 cm were placed on ice produced by  
4 freezing 100 µl deionized water in a 1.5 ml tube. The temperature was held at -2.5°C  
5 for 16 hours and then decreased by 1°C per hour to a minimum temperature of -12°C  
6 using a programmed freezer (MPF-1000, Eyela, Tokyo, Japan). As the temperature  
7 decreased, samples were taken at each temperature. Deionized water (1.2 ml) was  
8 added to each tube, and the samples were incubated with shaking at room temperature  
9 for 4 hour. Electrical conductivities of the resulting solutions were measured using a  
10 conductance meter (Twin Cond B-173, Horiba, Kyoto, Japan). Electro leakage was  
11 estimated as the ratio of electro conductivity at each freezing temperature to that at  
12 -80°C.

13

14 **Results**

15 Two lines of *B. distachyon* overexpressing *PpFTI* and three lines overexpressing *wft1*

1 were analyzed in this study. Under normal conditions (22°C), the growth rate of all five  
2 transgenic lines was slower than that of the wild type (WT) plants as evidenced by  
3 reductions in plant height and in fresh weight (Fig. 1). The *PpFTI* expressing lines  
4 were smaller than *wftI* expressing lines (Fig. 1).

5           The components of the water-soluble carbohydrates that accumulated in the  
6 leaf blades of transgenic and non-transgenic lines were qualitatively and quantitatively  
7 analyzed. Under normal temperature conditions, the qualitative analysis by  
8 HPAEC-PAD detected 6-kestotriose ( $\beta(2,6)$ -linked fructan with DP = 3) only in *wftI*  
9 transgenic plants, whereas fructans with DP > 4 could not be unambiguously identified  
10 in any transgenic plant or in the WT (Fig. 2). The quantitative HPLC analysis revealed  
11 significantly higher oligosaccharide amounts in *wftI* plants as compared to WT and  
12 *PpFTI*. However, these levels were low compared to those of glucose, fructose and  
13 sucrose (Table 1). Polysaccharides corresponding to polymerized fructans were not  
14 detected also in this quantitative analysis. The average amount of sucrose in transgenic  
15 lines expressing *PpFTI* was slightly lower than in WT and *wftI* transgenic lines (Table



1 1). To investigate the carbohydrates in the cold acclimated plants, leaves of plants  
2 treated at 4°C for 5 weeks after grown at room temperature for 8 weeks were analyzed.  
3 In the qualitative HPAEC-PAD analyses, WT had sequential small peaks around the  
4 region corresponding to fructans with DP > 5; however, the retention times of these  
5 peaks did not coincide with those of  $\beta(2,6)$ -linked fructans in the products of the  
6 PpFT1 recombinant enzyme with sucrose or  $\beta(2,1)$ -branched  $\beta(2,6)$ -linked fructans in  
7 the products of the Wft1 recombinant enzyme (Fig. 3). These retention times also did  
8 not accord with those of  $\beta(2,1)$ -linked or linear fructans (inulins) (data not shown).  
9 Furthermore, mild acid treatment (data not shown) or incubation with a recombinant  
10 Pp6-FEH1 that preferentially hydrolyze  $\beta(2,6)$ -linked fructans but also could hydrolyze  
11  $\beta(2,1)$ -linked fructans (Tamura et al. 2011, Fig S1), did not alter the pattern of these  
12 unidentified peaks. In transgenic plants expressing *wft1*, peaks corresponding to linear  
13  $\beta(2,6)$ -linked fructans with DP = 3 – ca. 40 were detected. By comparison, the *PpFTI*  
14 transgenic plants had similar peaks to those in WT and also sequential peaks at  
15 retention times corresponding to those of fructans with DP > 20 to the separation limit

1 (Fig. 3). These peaks were not observed in extracts of WT leaves and they were  
2 selectively removed by a treatment with Pp6-FEH1 (Fig. S1). There was no clear peak  
3 corresponding to 1-kestotriose in both WT and transgenic lines (Fig. S2). In the  
4 quantitative HPLC analysis, broad peaks corresponding to polysaccharide were  
5 detected in cold-treated *wft1* and *PpFTI* transgenic plants, and they were at negligible  
6 level in extracts of WT (Fig. S3). The polysaccharide peak in the *PpFTI* transgenic  
7 plant positioned at higher molecular weight than that in the *wft1* transgenic plant (Fig.  
8 S3). These broad peaks were drastically decreased by the recombinant Pp6-FEH1  
9 treatment (data not shown). The mean amounts of oligo- and polysaccharides in the  
10 transgenic lines were similar and were significantly higher than in WT (Table 2). In  
11 *PpFTI* transgenic lines, the amounts of fructose, glucose and sucrose were  
12 significantly higher than those in extracts of WT and *wft1* overexpression plants,  
13 resulting in a higher total water-soluble carbohydrate content in *PpFTI* transgenic lines  
14 (Table 2). In particular, the glucose content of transgenic lines expressing *PpFTI* was  
15 more than 10 times greater than in WT and in those expressing *wft1* (Table 2).

1           To confirm that the transgenic plants had fructosyltransferase activity, crude  
2 enzyme extracts from shoots grown under normal temperature conditions and their  
3 enzymatic products with sucrose (a substrate of fructosyltransferase) were analyzed by  
4 HPAEC-PAD. Significant 6-SF(S)T and 1-SST activities were confirmed by the  
5 generation of fructans with DP = 3, namely, 6-kestotriose and 1-kestotriose, in *PpFTI*  
6 and *wft1* transgenic lines (Fig. 4). In the reaction mixture of the crude enzyme extract  
7 from the *PpFTI* transgenic line, production of 6,6-kestotetraose (DP = 4) and  
8 6,6,6-kestopentaose (DP = 5) by 6-SFT activity was also observed under this reaction  
9 condition (Fig. 4). In the reaction solution from WT plants, signals corresponding to  
10 1-kestotriose and 6-kestotriose were detected at a very low level that was much weaker  
11 than in the reaction products of the enzyme extracts from the fructosyltransferase  
12 expressing lines.

13           To compare the freezing tolerance of the transgenic and WT plants, the  
14 degree of electrolyte leakage after freezing (termed the index of freezing tolerance) at  
15 the cellular level was measured. In leaf blades from plants grown under normal

1 temperature conditions, the degree of electrolyte leakage after freezing at -5°C did not  
2 differ significantly among transgenic plants expressing *wft1* or *PpFT1* and the WT  
3 plants (58.9, 59.7 and 54.2%, respectively). After cold acclimation, electrolyte leakage  
4 in two transgenic lines expressing *PpFT1* was significantly lower than in WT and in  
5 those expressing *wft1* at -8°C and -10°C of freezing temperatures, whereas difference  
6 of freezing tolerance was not clearly confirmed in WT and the *wft1* overexpressing  
7 lines (Fig. 5).

8

## 9 **Discussion**

10 *B. distachyon* was the first Pooideae species to have its genome fully sequenced (Vogel  
11 et al. 2010). It has proved a valuable model plant species for cereals, temperate grasses  
12 and dedicated biofuel crops, due to its short lifespan, small genome size, and ease of  
13 transformation (Opanowicz et al. 2008). Li et al. (2012) confirmed that cold responsive  
14 genes, such as those for ice recrystallization inhibition proteins and C-repeat binding  
15 factor genes, were conserved among *B. distachyon* and core Pooideae species. They

1 proposed the use of *B. distachyon* as a model for the specific molecular mechanisms  
2 involved in low temperature responses in Pooideae species. The fact that the  
3 semi-lethal temperature decreases in *B. distachyon* following a low temperature  
4 conditioning treatment (ca -5°C to -10°C), indicates that this species can respond to  
5 cold and increase its freezing tolerance. In the present study, we confirmed that only  
6 weak fructosyltransferase activity was present in crude enzyme extracts of WT plants;  
7 however, in the extracted water-soluble carbohydrate solution, our HPAEC-PAD  
8 analysis did not confirm the presence of  $\beta(2,6)$  and  $\beta(2,1)$ -linked fructans even after  
9 cold acclimation. Mild acid and FEH treatments revealed that the unidentified peaks  
10 that appeared after cold acclimation did not correspond to fructans, since fructans  
11 should have been hydrolyzed by these treatments. It can be concluded that *B.*  
12 *distachyon* does not accumulate fructans. Small fructosyltransferase activity in *B.*  
13 *distachyon* can be regarded as a side activity of invertases because synthesis of the  
14 DP3 fructans at high sucrose is a general property of invertases (De Coninck et al.  
15 2005; Ritsema et al. 2006). These suggest that the metabolism of water-soluble

1 carbohydrates, especially for storage, shows evolutionary diversity between *B.*  
2 *distachyon* and core Pooideae species such as wheat and timothy grass.

3           The significant increase in fructosyltransferase activity and the elevation of  
4 oligo- and polysaccharide contents following overexpression of the  
5 fructosyltransferase cDNAs, *PpFT1* and *wft1*, indicated the initiation of a heterologous  
6 novel fructan synthetic pathway in *B. distachyon*. When testing a crude extract of  
7 *PpFT1* transgenic plants with sucrose as the only substrate, higher amounts of  
8 1-kestotriose were generated as compared to 6-kestotriose and more polymerized  
9  $\beta(2,6)$ -linked fructans. This is in accordance with the fact the 6-SST activity of  
10 recombinant PpFT1 was lower compared to its 1-SST activity (Tamura et al. 2009).  
11 Under cold acclimation conditions, affecting growth more than photosynthesis,  
12 increasing sucrose supplies sustain fructan synthesis in PpFT1 transgenic plants. This  
13 indicates that PpFT1 acts as a 6-SFT *in planta*, and that endogenous invertases are not  
14 able to prevent the accumulation of the synthesized levan-type fructans. Generally,  
15 plant fructosyltransferases show low affinity for sucrose as a substrate (high apparent

1 Km; > 280 mM); therefore, sucrose availability is a limiting factor in fructan  
2 production (Cairns 2003). Under cold acclimation conditions, a significantly higher  
3 rate of accumulation of fructans was observed in transgenic plants expressing  
4 fructosyltransferases compared to under normal temperature conditions; this may  
5 reflect higher substrate availability in source leaves, due to the altered source/sink  
6 balance under cold. The increase in fructan content in transgenic lines expressing *wft1*,  
7 but not in those expressing *PpFT1*, under normal temperature conditions might be due  
8 to the higher affinity of Wft1 for sucrose compared to PpFT1 (Tamura et al. 2009). The  
9 difference in the DPs of the accumulated fructans, i.e., short fructans (DP = 3 - 40) in  
10 *wft1* transgenic plants and long fructans (DP > 20) in *PpFT1* plants, is consistent with  
11 the different affinity of the two fructosyltransferases for fructans of different DPs as  
12 acceptors; this difference in affinity was first identified by analysis of yeast  
13 recombinant enzymes (Tamura et al. 2009). Little accumulation of low-DP fructans in  
14 the *PpFT1* transgenic plants seemed to be caused by the higher 6-SFT activity of  
15 PpFT1 to high-DP fructans than to low DP ones as acceptors, which was previously

1 revealed in the recombinant enzyme analysis (Tamura et al. 2009). As a result,  
2 generated low-DP fructans seemed to be gradually converted to high DP fructans,  
3 resulting in the little accumulation of low-DP fructans. In transgenic plants expressing  
4 *PpFT1*, the linkage forms of the accumulated fructans could not be determined as the  
5 DPs were too high to be separated in this HPAEC-PAD analysis. However, with  
6 respect to the known enzymatic properties of PpFT1, it is likely that they had linear  
7  $\beta(2,6)$  linkages similar to those fructans that accumulated in *wft1* expressing plants;  
8 further analysis is needed to confirm this supposition. In addition to fructan  
9 accumulation, higher levels of hexose and sucrose per unit fresh weight were present in  
10 transgenic lines expressing *PpFT1* compared to WT and *wft1* expressing lines. In  
11 plants grown under more intense light conditions, a higher accumulation of glucose  
12 was also observed in *wft1* expressing lines (data not shown). A significant increase in  
13 glucose and/or fructose concentration has been reported in several studies on  
14 plant-derived 6-SFT expressing lines (Hisano et al. 2004; Kawakami et al. 2008).  
15 Accumulation of these hexoses might result from the release of glucose from sucrose



1 by a fructosyltransferase reaction, hydrolysis of fructans by native invertases, and /or  
2 hydrolysis of sucrose by invertase activity of introduced fructosyltransferases.  
3 However, it is possible that the reduced growth phenotypes of the transgenic lines,  
4 particularly those expressing *PpFTI*, might also affect carbohydrate metabolism, and  
5 cause a relatively low consumption of sugars.

6           The freezing tolerance at the cellular level in leaf blades of *wft1* lines did not  
7 differ from that of WT plants despite the former having approximately six times higher  
8 accumulation of oligo- and polysaccharides. This suggests that accumulation of  
9 fructans might not lead directly to an increase in freezing tolerance. The *PpFTI*  
10 expressing lines showed accumulation of oligo- and polysaccharides at a similar level  
11 to *wft1* lines and also showed a significant increase in freezing tolerance. The major  
12 differences in water-soluble carbohydrate compositions between *wft1* and *PpFTI*  
13 plants were (i) the structure of the fructans, especially their DP, and (ii) the amount of  
14 mono- and disaccharides, i.e. higher accumulation in *PpFTI* expressing lines and  
15 similar levels in WT and *wft1* lines under cold acclimation conditions. Several studies

1 have reported that mono- and disaccharides are involved in freezing tolerance in plant  
2 cells (reviewed by Valluru and van den Ende 2008; Livingston et al. 2009). Soluble  
3 sugars are also believed to play crucial roles in overall cellular ROS homeostasis  
4 (Couée et al. 2006; Keunen et al. 2013; Van den Ende 2013 and references therein).  
5 Therefore, the accumulation of high levels of mono- and disaccharides might be  
6 involved in the enhanced freezing tolerance of the leaf blades of *PpFT1* expressing  
7 plants. Hisano et al. (2004) reported that in perennial ryegrass the overexpression of  
8 *wft1* improves freezing tolerance, which was not seen in the *B. distachyon*  
9 overexpressing lines in this study. Different response to freezing in the *wft1*  
10 overexpressing lines of perennial ryegrass and *B. distachyon* compared to WT might be  
11 due to the difference of mono- and disaccharide content; mono- and disaccharide  
12 content increased in perennial ryegrass (Hisano et al. 2004) but not in *B. distachyon*.  
13 The evidence described above suggests that the enhancement of freezing tolerance  
14 caused by 6-SFT overexpression might be related to the increased accumulation of  
15 mono- and di-saccharides in addition to fructans. It has also been reported that tobacco

1 plants with heterologous expression of 6-SFT show accumulation of fructans and  
2 enhancement of freezing tolerance (del Viso et al. 2011; Bie et al. 2012); however,  
3 determination of mono- and disaccharide contents were not performed in these studies.  
4 Yoshida et al. (1998) reported that highly freezing-tolerant winter wheat varieties  
5 grown under autumn field conditions accumulate high amounts of simple sugars  
6 (mono- and disaccharides) and fructans, whereas other varieties (snow mold-resistant  
7 cultivars) with higher amounts of fructans and lower amounts of mono-and  
8 disaccharides do not have high freezing tolerance compared to varieties with high  
9 freezing tolerance. This also suggests the higher contribution of simple sugars than  
10 fructans for freezing tolerance.

11           The effect of the DP of the accumulated fructans on freezing tolerance was  
12 more difficult to ascertain in this study because the contents of other forms of  
13 carbohydrate (especially mono- and disaccharides) were very different between *wft1*  
14 and *PpFTI* expressing plants. In a study of liposome membrane stability, it was found  
15 that a combination of the high glass transition ( $T_g$ ) effect of hydroxyethyl starch and

1 the depression of gel phase transition temperature ( $T_m$ ) by glucose could preserve dry  
2 liposomes (Crowe et al. 1997). Hinch et al. (2007) also reported “synergistic effects”  
3 of low and high molecular weight carbohydrates on membrane stability. Thus, the  
4 enhanced freezing tolerance of *PpFTI* expressing lines might be a synergistic effect of  
5 simple sugars and high DP fructans.

6 Transgenic plants expressing fructosyltransferases, particularly those  
7 expressing *PpFTI*, showed reduced growth phenotypes. Aberrant phenotypes have  
8 been reported for transgenic plants with bacterial levansucrase genes (Cairns et al.  
9 2003). Overexpression of *wft1* in perennial ryegrass and rice did not cause aberrant  
10 phenotypes (Hisano et al. 2004; Kawakami et al. 2008) as observed in *B. distachyon*  
11 (this manuscript) and *Paspalum notatum* (dwarf phenotype, Muguerza et al. 2013),  
12 suggesting that growth aberrations are species-specific. As growth retardation occurred  
13 here under normal temperature conditions in which there is little, if any, accumulation  
14 of fructans, then the accumulation of fructans is not likely to be a major cause of the  
15 phenotypic effect. Further studies will be required to clarify the reason of growth

1 aberrations by the overexpression of plant fructosyltransferases.

2           In this study, relationship between the structures of fructans and freezing  
3 tolerance could not be clarified. However, our analyses here indicate that the increased  
4 freezing tolerance after overexpression of 6-SFT genes is caused by the increase of  
5 mono- and disaccharides and of fructans with high DPs. Findings obtained in a  
6 monocot grass model species *B. distachyon* in this study would contribute to the  
7 improvement of the freezing tolerance of plants, especially the most economically  
8 important Poaceae family including cereals, temperate forage grasses and dedicated  
9 biofuel crops.

10

## 11 **Acknowledgements**

12 We are grateful to Dr John Vogel, US Department of Agriculture, Agricultural  
13 Research Service, Dr Ichiro Mitsuhashi, National Institute of Agrobiological Sciences,  
14 Japan and Dr Masaru Iizuka, Kobe Shoin Women's University, Japan for providing  
15 seeds of 'Bd21-3' of *Brachypodium distachyon*, the pMLH7133 plasmid vector and

1 6-kestotriose, respectively. We thank Ms. Yukari Ikenobe and Satomi Shimada for their

2 technical assistance.

3

4

5

1 **References**

- 2 Bie XM, Wang K, She MY, Du LP, Zhang SX, Li JR, Gao X, Lin ZS, Ye XG (2012)  
3 Combinational transformation of three wheat genes encoding fructan biosynthesis  
4 enzymes confers increased fructan content and tolerance to abiotic stresses in  
5 tobacco. *Plant Cell Rep* 31:2229-2238
- 6 Bolouri-Moghaddam MR, Le Roy K, Xiang L, Rolland F, Van den Ende W (2010)  
7 Sugar signalling and antioxidant network connections in plant cells. *FEBS J* 277:  
8 2022-2037
- 9 Bonnett G, Sims I, Simpson R, Cairns A (1997) Structural diversity of fructan in relation  
10 to the taxonomy of the Poaceae. *New Phytol* 136:11-17
- 11 Cacula C, Hinch DK (2006) Monosaccharide composition, chain length and linkage type  
12 influence the interactions of oligosaccharides with dry phosphatidylcholine  
13 membranes. *BBA-Biomembranes* 1758:680-691
- 14 Cairns A, Nash R, De Carvalho M, Sims I (1999) Characterization of the enzymatic  
15 polymerization of 2,6-linked fructan by leaf extracts from timothy grass (*Phleum*  
16 *pratense*). *New Phytol* 142:79-91
- 17 Cairns AJ (2003) Fructan biosynthesis in transgenic plants. *J Exp Bot* 54:549-567
- 18 Carpita N, Kanabus J, Housley T (1989) Linkage structure of fructans and fructan  
19 oligomers from *Triticum aestivum* and *Festuca arundinacea* leaves. *J Plant Physiol*  
20 134:162-168
- 21 Chatterton N, Harrison P (1997) Fructan oligomers in *Poa ampla*. *New Phytol* 136:3-10
- 22 Chatterton N, Harrison P, Thornley W, Bennett J (1993) Structures of fructan oligomers  
23 in orchardgrass (*Dactylis glomerata* L). *J Plant Physiol* 142:552-556
- 24 Christensen AH, Quail PH (1996) Ubiquitin promoter-based vectors for high-level  
25 expression of selectable and/or screenable marker genes in monocotyledonous plants.  
26 *Transgenic Res* 5:213-218
- 27 Couée I, Sulmon C, Gouesbet G, El Amrani A (2006) Involvement of soluble sugars in  
28 reactive oxygen species balance and responses to oxidative stress in plants. *J Exp Bot*  
29 57:449-459
- 30 Crowe JH, Oliver AE, Hoekstra FA, Crowe LM (1997) Stabilization of dry membranes  
31 by mixtures of hydroxyethyl starch and glucose: The role of vitrification.

1 Cryobiology 35:20-30

2 De Coninck B, Le Roy K, Francis I, Clerens S, Vergauwen R, Halliday AM, Smith SM,  
3 Van Laere A, Van den Ende W (2005) Arabidopsis AtcwINV3 and 6 are not  
4 invertases but are fructan exohydrolases (FEHs) with different substrate  
5 specificities. Plant Cell Environ 28: 432-443

6 del Viso F, Casabuono AC, Couto AS, Hopp HE, Puebla AF, Heinz RA (2011)  
7 Functional characterization of a sucrose:fructan 6-fructosyltransferase of the  
8 cold-resistant grass *Bromus pictus* by heterologous expression in *Pichia pastoris* and  
9 *Nicotiana tabacum* and its involvement in freezing tolerance. J Plant Physiol  
10 168:493-499

11 Dionne J, Rochefort S, Huff DR, Desjardins Y, Bertrand A, Castonguay Y (2010)  
12 Variability for freezing tolerance among 42 ecotypes of green-type annual bluegrass.  
13 Crop Sci 50: 321-336

14 Gaudet DA, Laroche A, Yoshida M (1999) Low temperature-wheat-fungal interactions:  
15 A carbohydrate connection. Physiol Plant 106:437-444

16 Grotelueschen Rd, Smith D (1968) Carbohydrates in grasses. III. Estimations of degree  
17 of polymerization of fructosans in stem bases of timothy and brome grass near seed  
18 maturity. Crop Sci 8:210-212

19 Hinch D, Livingston D, Premakumar R, Zuther E, Obel N, Cacela C, Heyer A (2007)  
20 Fructans from oat and rye: Composition and effects on membrane stability during  
21 drying. BBA-Biomembranes 1768:1611-1619

22 Hisano H, Kanazawa A, Kawakami A, Yoshida M, Shimamoto Y, Yamada T (2004)  
23 Transgenic perennial ryegrass plants expressing wheat fructosyltransferase genes  
24 accumulate increased amounts of fructan and acquire increased tolerance on a  
25 cellular level to freezing. Plant Sci 167:861-868

26 Iizuka M, Yamaguchi H, Ono S, Minamiura N (1993) Production and isolation of levan  
27 by use of levansucrase immobilized on the ceramic support SM-10. Biosci Biotech  
28 Biochem 57:322-324

29 Kawakami A, Sato Y, Yoshida M (2008) Genetic engineering of rice capable of  
30 synthesizing fructans and enhancing chilling tolerance. J Exp Bot 59:793-802

31 Kawakami A, Yoshida M (2002) Molecular characterization of sucrose : sucrose



1 1-fructosyltransferase and sucrose : fructan 6-fructosyltransferase associated with  
2 fructan accumulation in winter wheat during cold hardening. *Biosci Biotechnol*  
3 *Biochem* 66:2297-2305

4 Kawakami A, Yoshida M (2005) Fructan : fructan 1-fructosyltransferase, a key enzyme  
5 for biosynthesis of graminan oligomers in hardened wheat. *Planta* 223:90-104

6 Keunen E, Peshev D, Vangronsveld J, Van den Ende W, Cuypers A (2013) Plant sugars  
7 are crucial players in the oxidative challenge during abiotic stress: extending the  
8 traditional concept. *Plant Cell Environ* 36: 1242-1255

9 Li C, Rudi H, Stockinger EJ, Cheng H, Cao M, Fox SE, Mockler TC, Westereng B,  
10 Fjellheim S, Rognli OA, Sandve SR (2012) Comparative analyses reveal potential  
11 uses of *Brachypodium distachyon* as a model for cold stress responses in temperate  
12 grasses. *BMC Plant Biol* 12:65

13 Li HJ, Yang AF, Zhang XC, Gao F, Zhang JR (2007) Improving freezing tolerance of  
14 transgenic tobacco expressing-sucrose: sucrose 1-fructosyltransferase gene from  
15 *Lactuca sativa*. *Plant Cell Tiss Org* 89:37-48

16 Livingston DP, Hinch DK, Heyer AG (2009) Fructan and its relationship to abiotic  
17 stress tolerance in plants. *Cell Mol Life Sci* 66:2007-2023

18 Mitsuhashi I, Ugaki M, Hirochika H, Ohshima M, Murakami T, Gotoh Y, Katayose Y,  
19 Nakamura S, Honkura R, Nishimiya S, Ueno K, Mochizuki A, Tanimoto H,  
20 Tsugawa H, Otsuki Y, Ohashi Y (1996) Efficient promoter cassettes for enhanced  
21 expression of foreign genes in dicotyledonous and monocotyledonous plants. *Plant*  
22 *Cell Physiol* 37:49-59

23 Muguerza M, Gondo T, Yoshida M, Kawakami A, Terami F, Yamada T, Akashi R (2013)  
24 Modification of the total soluble sugar content of the C4 grass *Paspalum notatum*  
25 expressing the wheat-derived sucrose:sucrose 1-fructosyltransferase and  
26 sucrose:fructan 6-fructosyltransferase genes. *Grassl Sci* 59: (in print)

27 Opanowicz M, Vain P, Draper J, Parker D, Doonan JH (2008) *Brachypodium distachyon*:  
28 making hay with a wild grass. *Trends Plant Sci* 13:172-177

29 Ritsema T, Hernandez L, Verhaar A, Altenbach D, Boller T, Wiemken A, Smeekens S  
30 (2006) Developing fructan-synthesizing capability in a plant invertase via  
31 mutations in the sucrose-binding box. *Plant J* 48:228-237

- 1 Tamura K, Kawakami A, Sanada Y, Tase K, Komatsu T, Yoshida M (2009) Cloning and  
2 functional analysis of a fructosyltransferase cDNA for synthesis of highly  
3 polymerized levans in timothy (*Phleum pratense* L.). J Exp Bot 60:893-905
- 4 Tamura K, Sanada Y, Tase K, Komatsu T, Yoshida M (2011) *Pp6-FEH1* encodes an  
5 enzyme for degradation of highly polymerized levan and is transcriptionally  
6 induced by defoliation in timothy (*Phleum pratense* L.). J Exp Bot 62: 3421-3431
- 7 Valluru R, Van den Ende W (2008) Plant fructans in stress environments: emerging  
8 concepts and future prospects. J Exp Bot 59:2905-2916
- 9 Van den Ende W (2013) Multifunctional fructans and raffinose family oligosaccharides.  
10 Front Plant Sci 4: 247
- 11 Van den Ende W, Valluru R (2009) Sucrose, sucrosyl oligosaccharides, and oxidative  
12 stress: scavenging and salvaging? J Exp Bot 60:9-18
- 13 Vereyken I, Chupin V, Hoekstra F, Smeekens S, de Kruijff B (2003) The effect of fructan  
14 on membrane lipid organization and dynamics in the dry state. Biophys J  
15 84:3759-3766
- 16 Vijn I, Smeekens S (1999) Fructan: More than a reserve carbohydrate? Plant Physiol  
17 120:351-359
- 18 Vogel J, Hill T (2008) High-efficiency *Agrobacterium*-mediated transformation of  
19 *Brachypodium distachyon* inbred line Bd21-3. Plant Cell Rep 27:471-478
- 20 Vogel JP, Garvin DF, Mockler TC et al. (2010) Genome sequencing and analysis of the  
21 model grass *Brachypodium distachyon*. Nature 463:763-768
- 22 Yoshida M, Abe J, Moriyama M, Kuwabara T (1998) Carbohydrate levels among winter  
23 wheat cultivars varying in freezing tolerance and snow mold resistance during  
24 autumn and winter. Physiol Plant 103:8-16
- 25 Yoshida M, Tamura K (2011) Research on fructan in wheat and temperate forage grasses  
26 in Japan. Jpn Agr Res Q 45:9-14

1 **Figure legends**

2

3 **Fig. 1 a** Phenotypes of transgenic *B. distachyon* expressing *wft1* and *PpFT1* driven by  
4 the maize ubiquitin gene promoter. Plants were grown at 22°C, under 10 hours light for  
5 7 weeks. WT, wild type; WFT, *wft1* expressing transgenic plant; PFT, *PpFT1*  
6 expressing transgenic plant. **b** The height and fresh weight of each transgenic line and  
7 WT are given as means  $\pm$  SD ( $n = 5$  plants for each line). The means of each line with  
8 the same small letter do not differ at  $p < 0.05$  by Tukey's HSD test

9

10 **Fig. 2** Anion exchange HPLC (HPAEC-PAD) analysis of water-soluble carbohydrates  
11 from the leaf blades of transgenic and wild type *B. distachyon* grown under normal  
12 temperature conditions. Extracted solutions from fully expanded leaves of wild type  
13 **(b)**, plants of a transgenic line expressing *wft1*, WFT1-20 **(c)** and plants of a transgenic  
14 line expressing *PpFT1*, PFT1-31 **(d)** were analyzed with a standard **(a)**. Abbreviations  
15 for each sugar peak are: G, glucose; F, fructose; S, sucrose; 1K, 1-kestotriose; 6K,  
16 6-kestotriose; The *numbers* indicate the putative DPs of  $\beta(2,6)$ -linked and linear

1 fructan oligomers

2

3 **Fig. 3** Anion exchange HPLC (HPAEC-PAD) analysis of water-soluble carbohydrates

4 from the leaf blades of cold acclimated transgenic and wild type *B. distachyon*.

5 Extracted solutions from fully expanded leaves of cold acclimated wild type plants (**d**),

6 plants from a transgenic line expressing *wft1*, WFT1-20 (**e**) and plants from a

7 transgenic line expressing *PpFT1*, PFT1-31 (**f**) were analyzed. Standard (**a**), products

8 of the *wft1* and *PpFT1* recombinant enzyme solution with sucrose (**b** and **c**) were also

9 analyzed. Chromatograms at the latter retention time are redrawn using an extended y

10 axis scale (**d**, **e** and **f**). Abbreviations for each sugar peak are: G, glucose; F, fructose; S,

11 sucrose; 1K, 1-kestotriose; 6K, 6-kestotriose; The *numbers* indicate the putative DPs of

12  $\beta$ (2,6)-linked and linear fructan oligomers and the *numbers* with *asterisks* indicate the

13 putative DPs of  $\beta$ (2,6)-linked branched fructan oligomers produced by polymerization

14 of fructose units linked to 1-kestotriose

15

1 **Fig. 4** Anion exchange HPLC analysis (HPAEC-PAD) of the enzymatic products of  
2 crude enzyme extracts with sucrose. Crude enzymatic extracts from wild type plants  
3 **(d)**, a transgenic line expressing *wft1*, WFT1-20 **(e)** and a transgenic line expressing  
4 *PpFT1*, PFT1-31 **(f)** grown under normal temperature conditions were incubated with  
5 1 M sucrose. Standard **(a)**, products of the PpFT1 recombinant enzyme solution with  
6 sucrose **(b)** and sucrose incubated with buffer not including enzyme extracts **(c)** were  
7 also analyzed. Abbreviations for each sugar peak are: G, glucose; F, fructose; S,  
8 sucrose; 1K, 1-kestotriose; 6K, 6-kestotriose; The *numbers* indicate the putative DPs of  
9  $\beta$ (2,6)-linked and linear fructan oligomers

10

11 **Fig. 5** Freezing tolerance of leaf blades of transgenic *B. distachyon* expressing *wft1* or  
12 *PpFT1*. The leaf blades of cold acclimated plants were used for the freezing test.  
13 Electrolyte leakage was calculated from the value of electrical conductivity after  
14 freezing ( $n = 5$ ). The *asterisks* indicate significant differences compared to wild type  
15 by Dunnett's test (\*,  $P < 0.05$ ; \*\*,  $P < 0.01$ )

16

1 **Supplemental material**

2 **Figure S1** Anion exchange HPLC (HPAEC-PAD) analysis of water-soluble  
3 carbohydrates from the leaf blades of cold acclimated plants, treated with the  
4 recombinant Pp6-FEH1 enzyme. **a** Authentic standards; **b** and **c** untreated and treated  
5 extracted solutions from fully expanded leaves of cold acclimated wild type plants; **d**  
6 and **e**, untreated and treated extracted solutions from a transgenic line expressing *wft1*,  
7 WFT1-20; **f** and **g**, untreated and treated extracted solutions from a transgenic line  
8 expressing *PpFT1*, PFT1-31. Chromatograms at the latter retention time are redrawn  
9 using an extended y axis scale (**f** and **g**). Abbreviations for each sugar peak are: G,  
10 glucose; F, fructose; S, sucrose; 1K, 1-kestotriose; N, nystose

11

12 **Figure S2** Low molecular parts of the anion exchange HPLC (HPAEC-PAD) analysis  
13 of water-soluble carbohydrates from the leaf blades of cold acclimated plants. **a**  
14 Authentic standards; **b** wild type; **c** a transgenic line expressing *wft1*, WFT1-20; **d** a  
15 transgenic line expressing *PpFT1*, PFT1-31. Abbreviations for each sugar peak are: G,

1 glucose; F, fructose; S, sucrose; 1K, 1-kestotriose

2

3 **Figure S3** HPLC chromatograms of water-soluble carbohydrates from the leaf blades

4 of cold acclimated transgenic and wild type *B. distachyon* analyzed by the SE and LE

5 separation mode with the RI detection. Extracted solutions from fully expanded leaves

6 of cold acclimated wild type plants (a), plants from a transgenic line expressing *wft1*,

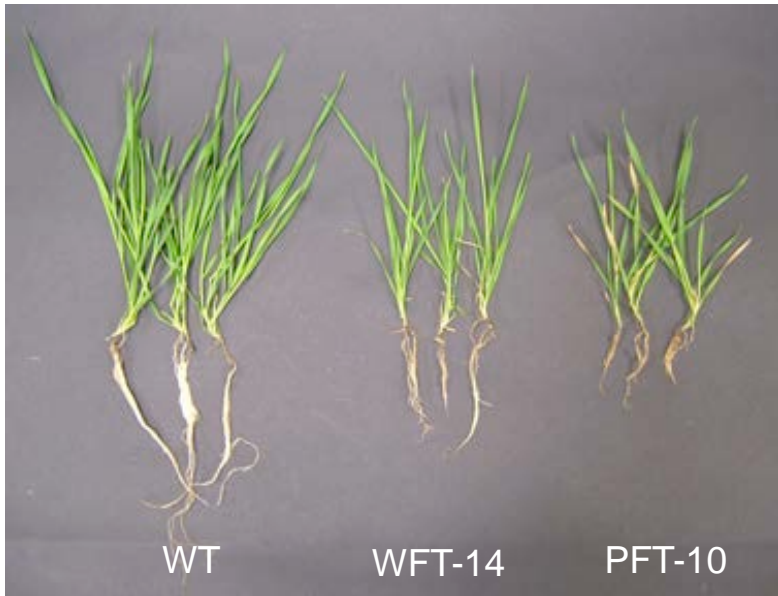
7 WFT1-20 (b) and plants from a transgenic line expressing *PpFTI*, PFT1-31 (c) were

8 analyzed. Abbreviations for each sugar peak are: G, glucose; F, fructose; S, sucrose; O,

9 oligosaccharide; P, polysaccharide. The leftmost peak in each chromatogram does not

10 show any sugars

a



b

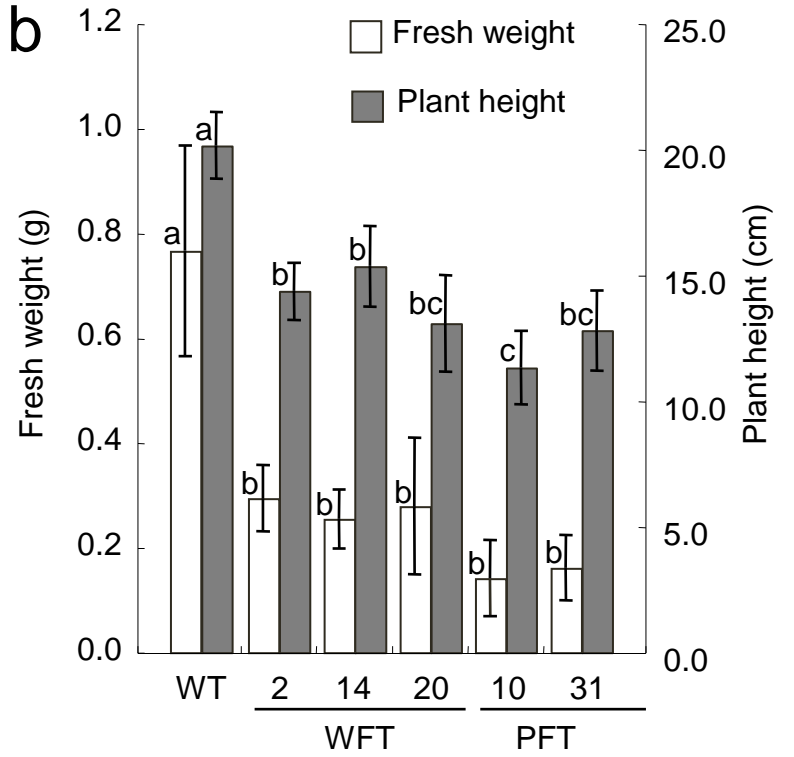


Fig.1



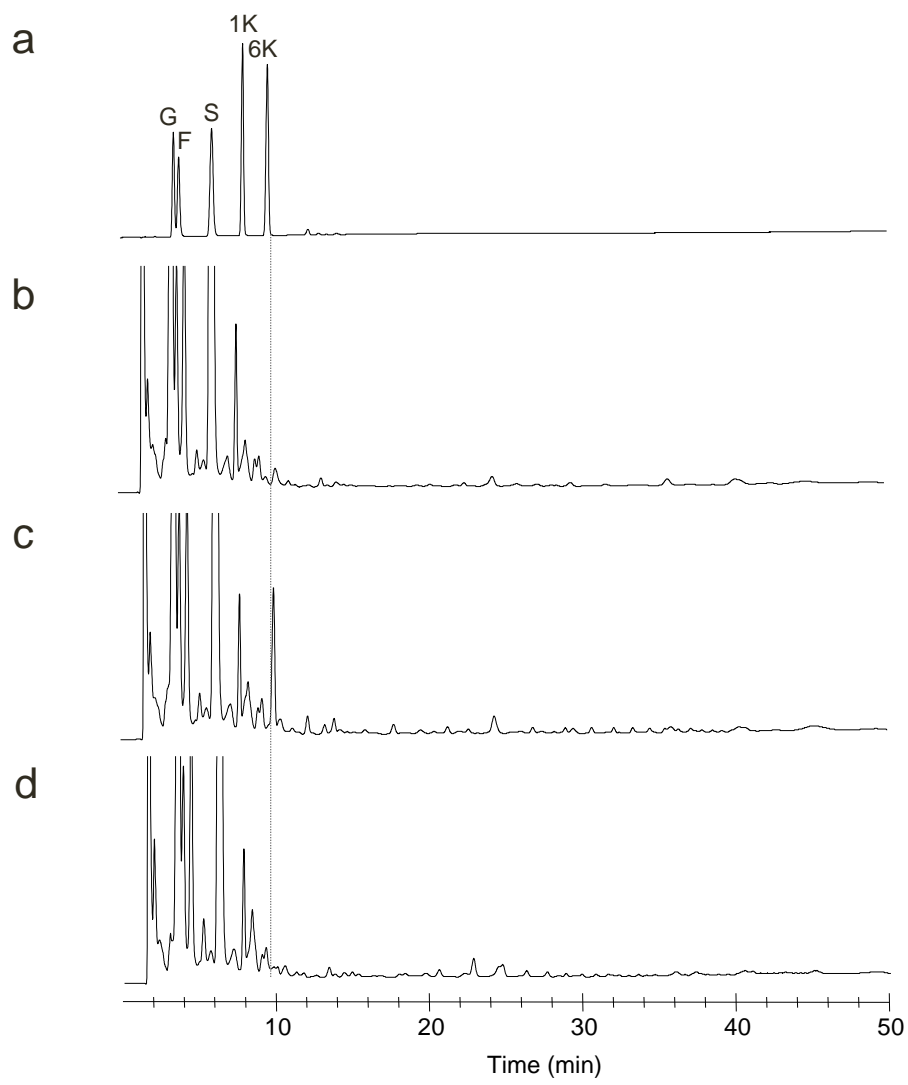


Fig. 2

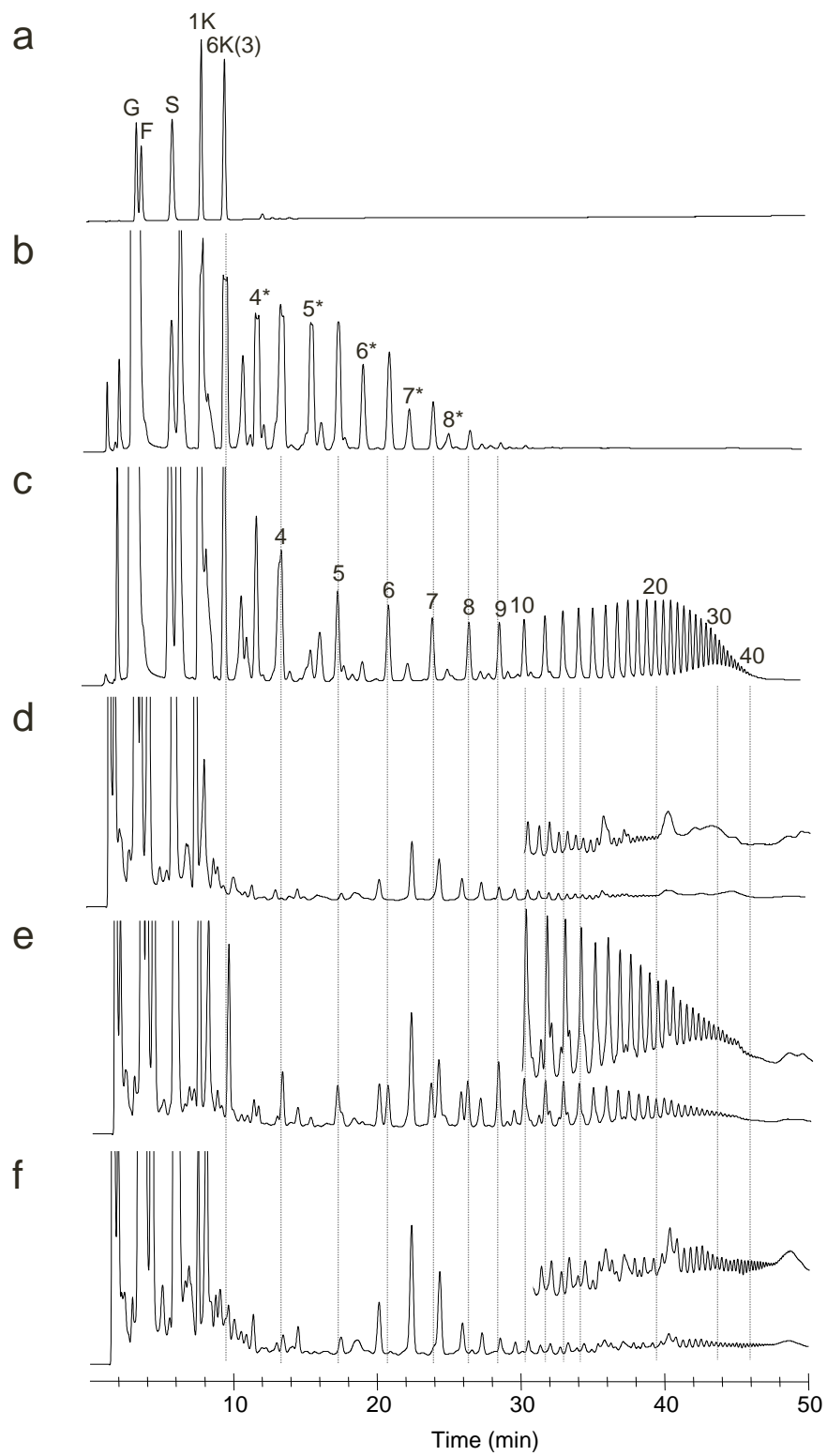


Fig. 3

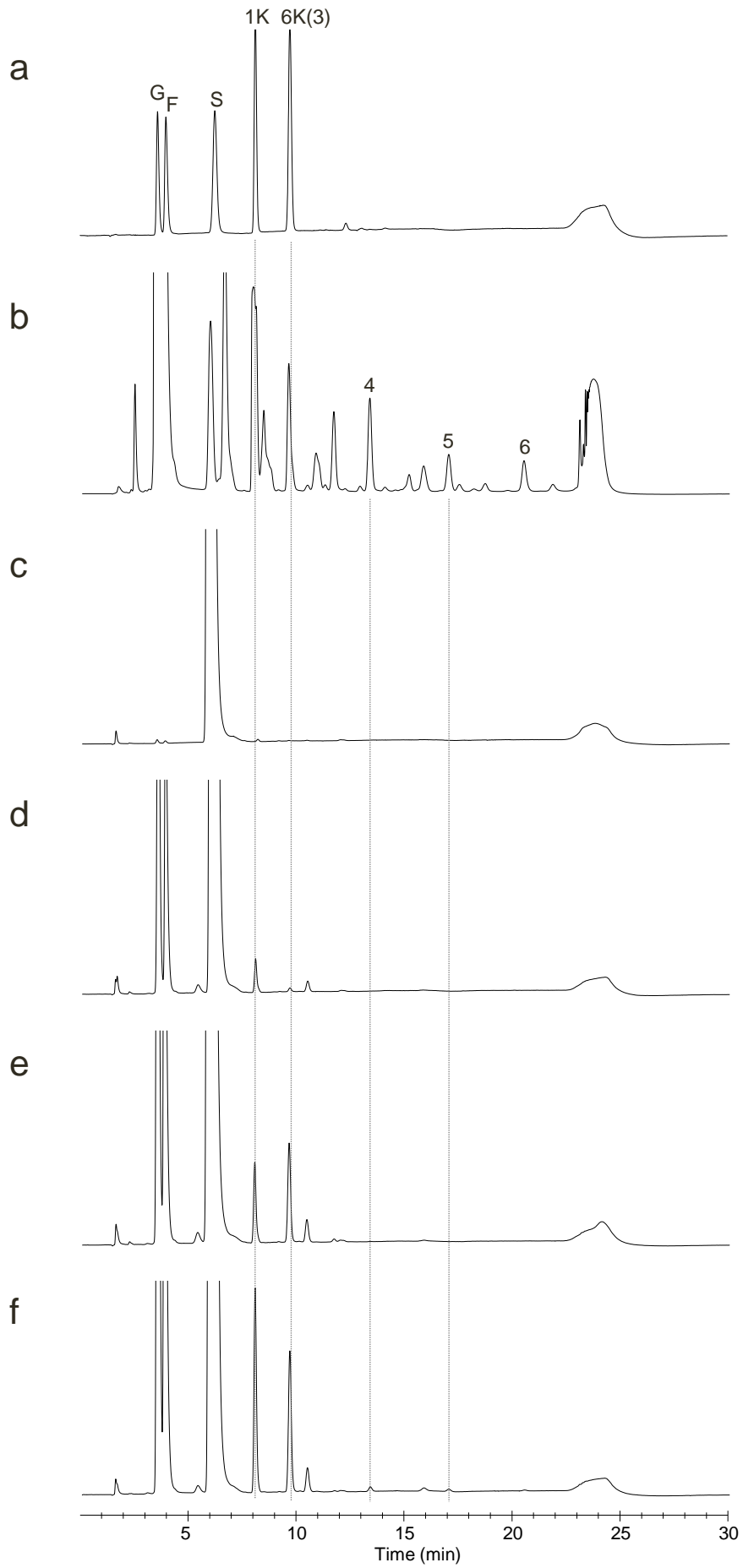


Fig. 4

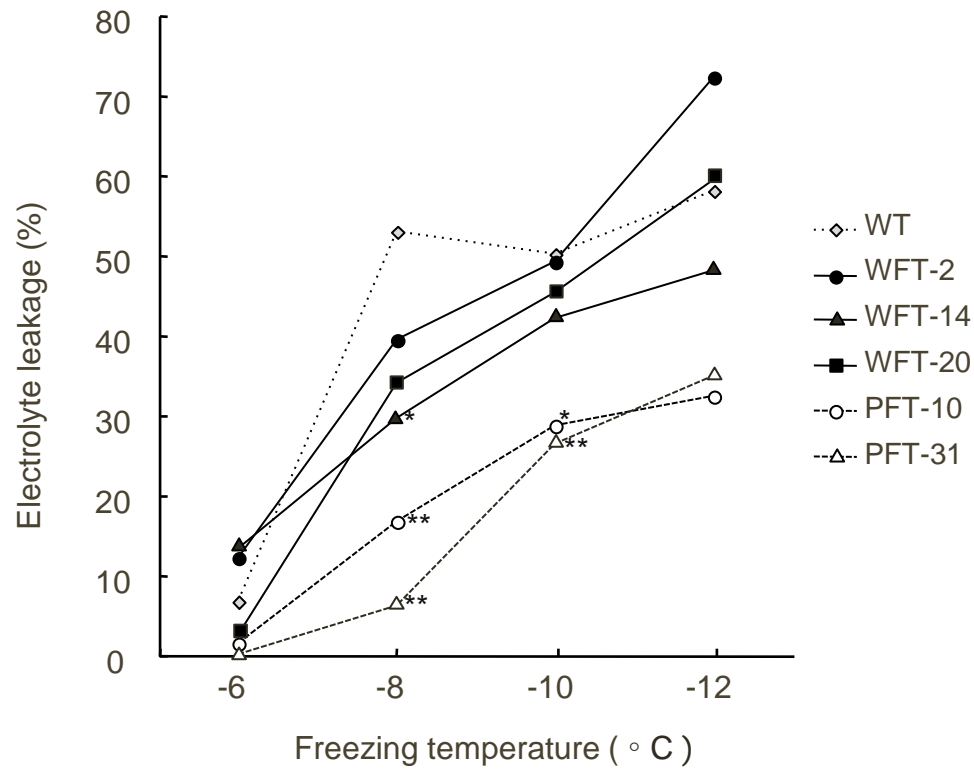


Fig. 5

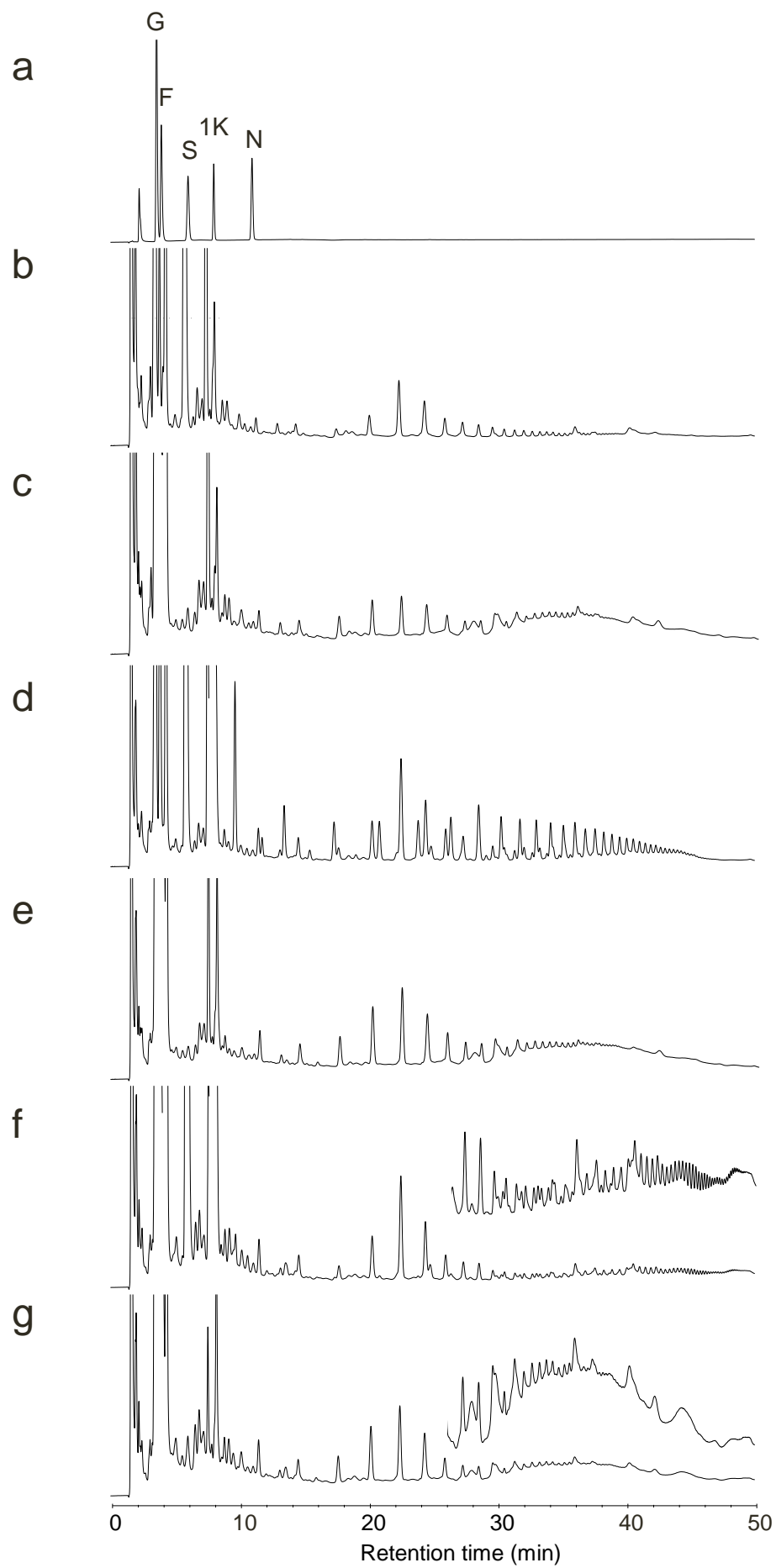


Fig. S1

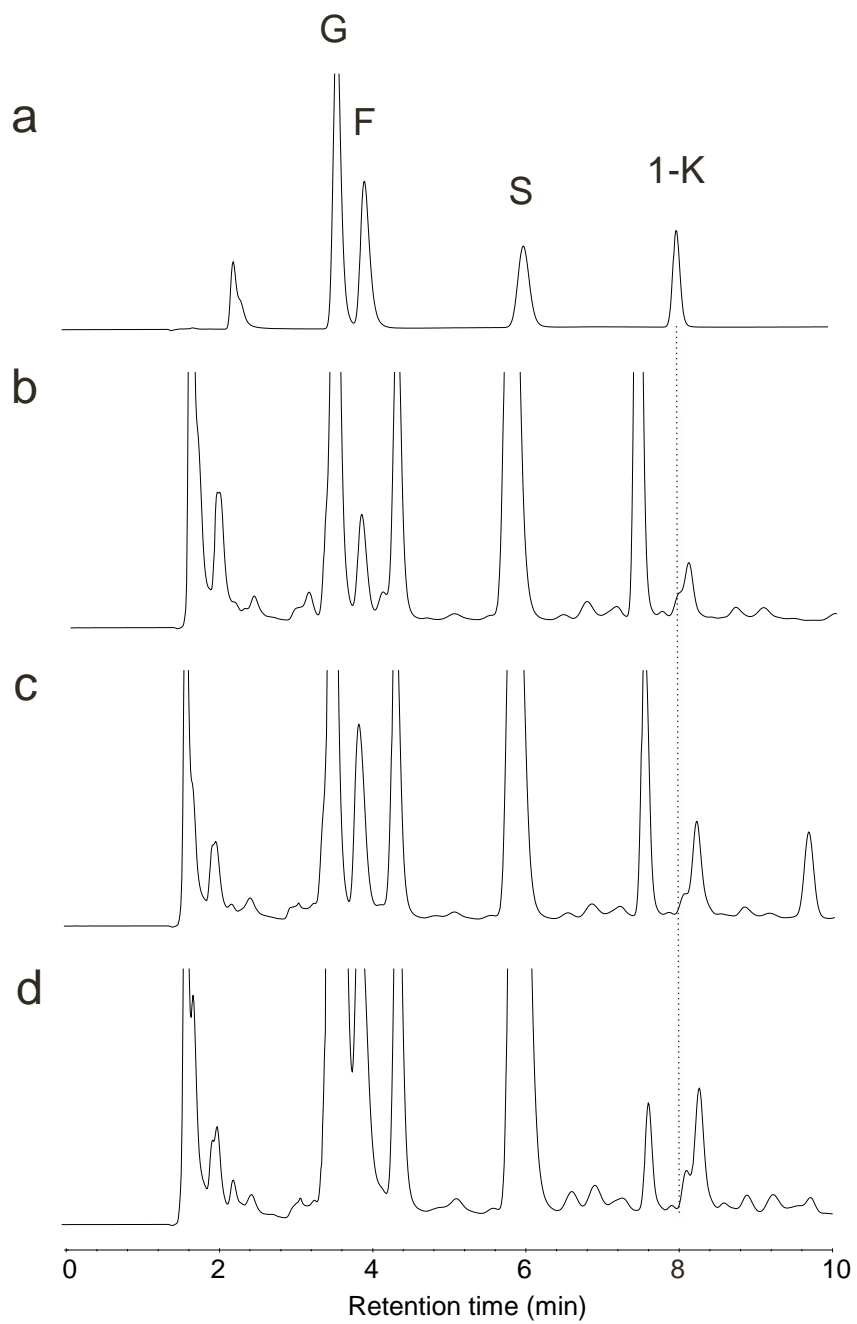


Fig. S2

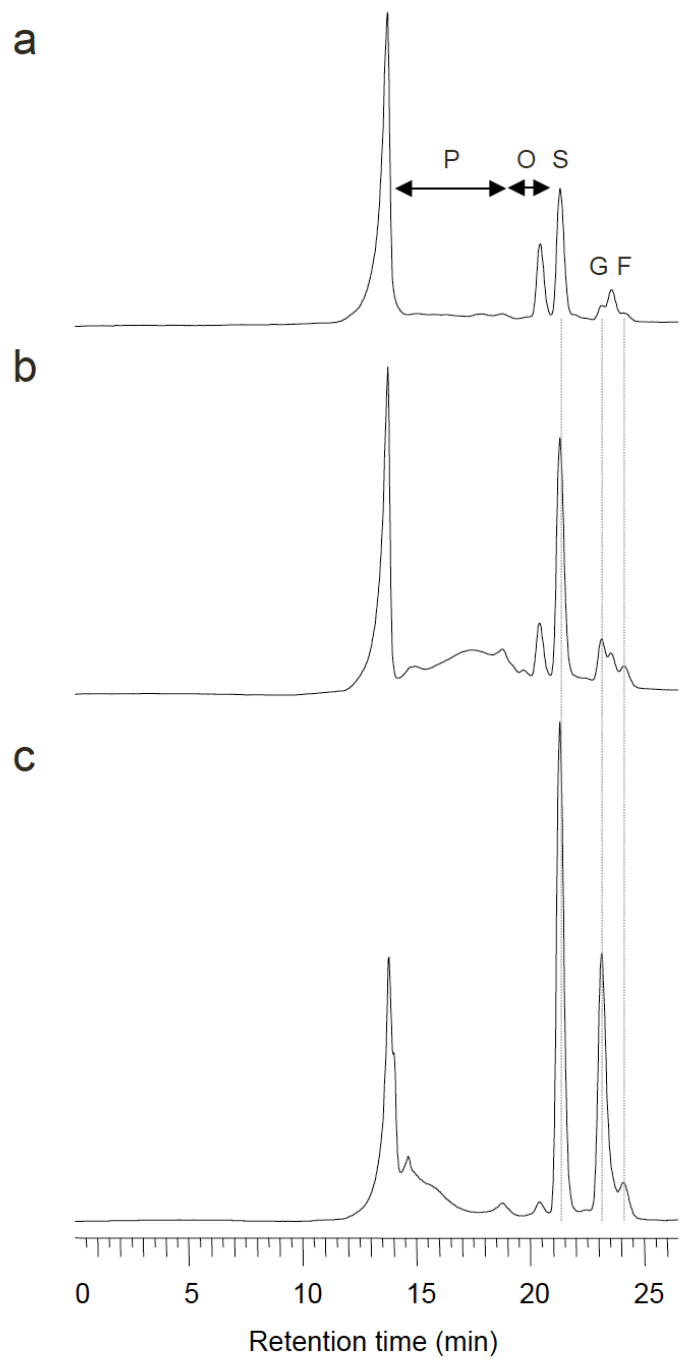


Fig. S3

1 **Table 1** Sugar contents (mg g<sup>-1</sup> fresh weight) of transgenic and wild type plants under  
2 normal temperature conditions

Line	Fructose	Glucose	Sucrose	Oligosaccharide	Total water-soluble carbohydrate
PFT-10	0.7 (±0.3) a	1.2 (±0.5) a	8.5 (±1.7) a	0.4 (±0.1) a	13.5 (±4.5) a
PFT-31	0.7 (±0.2) a	1.2 (±0.3) a	8.7 (±1.1) ab	0.4 (±0.1) ab	14.5 (±2.2) a
WFT-2	0.8 (±0.1) a	1.3 (±0.1) a	10.0 (±1.1) ab	0.8 (±0.1) c	14.9 (±1.7) a
WFT-14	0.8 (±0.1) a	1.3 (±0.1) a	11.0 (±1.0) b	0.8 (±0.1) c	14.8 (±1.5) a
WFT-20	0.7 (±0.1) a	1.0 (±0.2) a	10.4 (±1.5) ab	0.6 (±0.1) b	14.1 (±1.7) a
WT	0.9 (±0.1) a	1.2 (±0.1) a	10.2 (±0.9) ab	0.5 (±0.1) ab	13.5 (±2.6) a
PFT average	0.7 (±0.2) a	1.2 (±0.4) a	8.6 (±1.4) a	0.4 (±0.1) a	14.0 (±3.4) a
WFT average	0.8 (±0.1) a	1.2 (±0.2) a	10.5 (±1.2) b	0.7 (±0.1) b	14.6 (±1.6) a
WT	0.9 (±0.1) a	1.2 (±0.1) a	10.2 (±0.9) ab	0.5 (±0.1) a	13.5 (±2.6) a

3 Fructans were included in the oligosaccharide category. WT, wild type; WFT,  
4 transgenic lines expressing *wft1*; PFT, transgenic lines expressing *PpFT1*. The results  
5 for each line ( $n = 5$  plants) and for the combined data of each transgenic type (WFT,  $n$   
6 = 15; PFT,  $n = 10$ ) are given as means ± SD. Means with the same *small letter* do not  
7 differ at  $P < 0.05$  by Tukey's HSD test



1 **Table 2** Sugar contents (mg g<sup>-1</sup> fresh weight) of transgenic and wild type plants under  
 2 cold acclimation conditions

Line	Fructose	Glucose	Sucrose	Oligo- and polysaccharide	Total water-soluble carbohydrate
PFT-10	3.2 (±1.3) ab	28.5 (±16.8) a	28.2 (±6.5) a	28.8 (±12.4) a	88.8 (±26.4) a
PFT-31	4.5 (±2.1) a	18.1 (±3.0) a	35.2 (±5.4) a	34.8 (±13.8) a	92.6 (±19.7) a
WFT-2	0.5 (±0.4) c	1.4 (±0.4) b	11.1 (±3.6) b	19.0 (±10.1) ab	32.1 (±13.6) b
WFT-14	2.2 (±1.5) abc	2.6 (±1.8) b	16.6 (±4.6) b	23.1 (±12.7) a	50.0 (±22.9) b
WFT-20	1.8 (±0.5) bc	2.7 (±1.4) b	14.8 (±4.0) b	30.6 (±7.4) a	49.8 (±12.7) b
WT	1.2 (±0.8) bc	2.0 (±0.6) b	10.1 (±0.8) b	4.3 (±0.5) b	17.5 (±1.4) b
PFT average	3.9 (±1.8) a	23.3 (±12.6) a	31.7 (±6.7) a	31.8 (±12.8) a	90.7 (±22.1) a
WFT average	1.6 (±1.1) b	2.3 (±1.4) b	14.4 (±4.4) b	26.6 (±12.4) a	44.8 (±18.0) b
WT	1.2 (±0.8) b	2.0 (±0.6) b	10.1 (±0.8) b	4.3 (±0.5) b	17.5 (±1.4) c

3 Fructans were included in the oligo- and polysaccharide category. WT, wild type; WFT,  
 4 transgenic lines expressing *wft1*; PFT, transgenic lines expressing *PpFT1*. The results  
 5 for each transgenic line (n = 5 plants) and for the combined data of each transgenic  
 6 type (WFT, n = 15; PFT, n = 10) are given as means ± SD. Means with the same *small*  
 7 *letter* do not differ at  $P < 0.05$  by Tukey's HSD test