

Supporting Online Material for

Bacterial Community Variation in Human Body Habitats Across Space and Time

Elizabeth K. Costello, Christian L. Lauber, Micah Hamady, Noah Fierer, Jeffrey I. Gordon, Rob Knight*

*To whom correspondence should be addressed. E-mail: rob.knight@colorado.edu

This file includes:

Materials and Methods

Results

Figs. S1 to S22

Table S1

References S1 to S20

Materials and Methods

Sample collection. Healthy adults were recruited to donate samples on two consecutive days in June and again three months later on two consecutive days in September 2008. Volunteers were unrelated individuals of both sexes and most lived in Boulder, CO. Female subjects F1, F2, F3 and male subjects M1, M2, M3, M4, and M6 were 30-35 years old. Subject M5 was approximately 60 years old. The health status of the volunteers was self-reported. None of the volunteers indicated that they had been hospitalized in the previous 6 months. All individuals were made aware of the nature of the experiment and gave written informed consent in accordance with the sampling protocol approved by the University of Colorado Human Research Committee (protocol 0708.12). On the day of sampling, participants were instructed to bathe in the morning using their choice of personal hygiene products, but to avoid wearing deodorant or antiperspirant. The interval between subject bathing and the collection of most samples likely ranged from around several hours to half an hour. Participants were asked to avoid eating or drinking for one hour prior to oral sampling. Skin surfaces, hair on top of the head, and nostrils (nares) were sampled using autoclaved cotton-tipped swabs (Puritan) pre-moistened with a sterile solution of 0.15 M NaCl and 0.1% Tween 20 (*S1*, *S2*). Swabbing has been shown to be a suitable method for skin sample collection for microbial community analysis (*S3*). Dry cotton-tipped swabs were used to sample the external auditory canal [and earwax (cerumen) if present], the dorsal surface of the tongue, and stool. Stool samples have been shown to provide an adequately representative sample of the gut microbiota (*S4*). Stool was swabbed using two different methods for comparison: i) off of used bathroom tissue and ii) by stabbing the swab

directly into the largest piece of feces (see Fig. S22 for comparison). We found that swabbing off of used bathroom tissue was adequate for obtaining material for microbial community analysis. Swabs were placed in sterile 15 ml plastic tubes and stored at -80°C within 10 minutes of sampling. Volunteers sampled stool on the same days that the other samples were collected (within 24 hours). If needed, the subjects were provided dry ice for the transport of their stool samples back to the lab. Liquid samples were also collected. The oral cavity was rinsed by swishing 10 ml of sterile water for 10 seconds, and then spitting the water into a sterile 50 ml plastic tube (see Fig. S22 for comparison to dorsal tongue swabs). Liquids were stored at 4°C for several hours before sterile filtration onto 0.2µm pore size cellulose-nitrate filters (Nalgene). Filtered samples were immediately placed at -80°C. Volunteers sampled themselves while wearing sterile gloves after first having their palms and index fingers swabbed by another person wearing sterile gloves. Replicate samples from the right and left sides of the body were taken when possible. All but one subject had not taken antibiotics in the 6 months prior to the June sampling dates, and none took antibiotics during the study period. Figure S1 lists the sample types, dates, and subjects. Samples were stored at -80°C for <1 week prior to DNA extraction.

We performed a follow-up study aimed at addressing whether skin location influences bacterial community assembly. Our approach involved transplanting foreign bacteria from various donor sites (dorsal tongue, forehead, and volar forearm) onto disinfected recipient skin sites (forehead and volar forearm) both within and between individuals. Four healthy participants (2 females and 2 males) who had given written consent to be re-contacted for follow-up sampling were recruited to donate samples on

two consecutive days in March 2009. All individuals were made aware of the nature of the experiment and gave written informed consent in accordance with the sampling protocol approved by the University of Colorado Human Research Committee (protocol 0109.23). The subjects had not taken antibiotics for at least six months. Participants were asked to bathe in the morning prior to sampling and to avoid applying lotions or other products to their skin. All samples and transplants were collected using autoclaved cotton-tipped swabs. For skin, the swab was pre-moistened in a saline solution (0.15 M NaCl and 0.1% Tween 20). Each day, participants received bacteria from themselves (i.e., bacteria transplanted from their own skin or tongue) and from another person (i.e., bacteria transplanted from another participant's skin or tongue). On day one, the non-self donor was the same sex as the recipient and on day two, the opposite sex. Grids were drawn on the participant's forehead and left volar forearm using an alcohol-resistant marker (VWR) and contained four sampling sites, each measuring 20 cm². After taking initial samples from the sites and harvesting transplants, participants disinfected their skin in the area of the grids. Disinfection involved a 10 second scrub with liquid antibacterial soap (Dial) using an autoclaved mini-sponge and sterile water, followed by a sterile water rinse, a brief paper towel pat, a vigorous 10 second rub with an individually wrapped 70% v/v isopropanol pad (BD), a brief air dry, a once-over swab with 95% v/v ethanol, and a final air dry. We chose these chemicals because they are routinely used for skin disinfection and are not known to persist on skin surfaces for extended periods of time. Because it is very difficult to conclusively show that bacteria and/or their DNA are absent from a particular skin location, and because our disinfection protocol was not designed to remove DNA specifically, we did not perform a PCR-based test for the presence of

bacterial 16S rDNA on the recently disinfected skin sites. Immediately following disinfection, participants applied the bacterial transplants to their prepared skin by swabbing the appropriate site for 5-10 seconds. After transplantation, a sterile gauze pad was taped loosely over the sampling grid to prevent major disturbances. Post-transplant sampling occurred at 2, 4, and 8 hours. Participants and members of the research team wore gloves and surgical masks throughout the sampling period to prevent contamination while talking or handling swabs. All samples were placed at -80°C immediately following collection and were stored in this manner for <1 week prior to DNA extraction. Figure S14 provides an overview of the sampling procedure.

DNA extraction. Genomic DNA was extracted from all swabs and filters using the MO BIO PowerSoil DNA Isolation kit with modifications. The cotton tips of frozen swabs were broken off directly into bead tubes to which 60 µl of Solution C1 had been added. Frozen filters were packaged into bead tubes using sterile forceps. Tubes were incubated at 65°C for 10 minutes and then shaken horizontally at maximum speed for 2 minutes using the MO BIO vortex adapter. The remaining steps were performed as directed by the manufacturer. Extracted DNA was stored at -20°C.

PCR amplification of the V2 region of bacterial 16S rRNA genes. For each sample, we amplified 16S rRNA genes using a primer set described by Fierer et al. (S2) that had been optimized for the phylogenetic analysis of pyrosequencing reads (S5). The forward primer (5'-GCCTTGCCAGCCCGCTCAGTCAGAGTTTGATCCTGGCTCAG-3') contained the 454 Life Sciences primer B sequence, the broadly conserved bacterial primer 27F, and a two-base linker sequence ('TC'). The reverse primer (5'-GCCTCCCTCGCGCCATCAGNNNNNNNNNNNCATGCTGCCTCCCGTAGGAGT

-3') contained the 454 Life Sciences primer A sequence, a unique 12-nt error-correcting Golay barcode used to tag each PCR product (designated by NNNNNNNNNNNN), the broad-range bacterial primer 338R, and a 'CA' linker sequence inserted between the barcode and the rRNA primer. PCR reactions were carried out in triplicate 25 μ l reactions with 0.6 μ M forward and reverse primers, 3 μ l template DNA, and 1X of either Platinum PCR SuperMix (Invitrogen) or HotMasterMix (5 PRIME). All dilutions were carried out using certified DNA-free PCR water (MO BIO). PCR reactions were assembled within a PCR hood in which all surfaces and pipettes had been decontaminated with DNA AWAY (Molecular BioProducts) and UV irradiated for 30 minutes. Thermal cycling consisted of initial denaturation at 94°C for 3 minutes followed by 35 cycles of denaturation at 94°C for 45 seconds, annealing at 50°C for 30 seconds, and extension at 72°C for 90 seconds, with a final extension of 10 minutes at 72°C. Replicate amplicons were pooled and visualized on 1.0% agarose gels using SYBR Safe DNA gel stain in 0.5X TBE (Invitrogen). Amplicons were cleaned using the UltraClean-htp 96-well PCR Clean-up kit (MO BIO) according to the manufacturers instructions.

Amplicon quantitation, pooling, and pyrosequencing. Amplicon DNA concentrations were determined using the Quant-iT PicoGreen dsDNA reagent and kit (Invitrogen). Assays were carried out using 5-10 μ l of cleaned PCR product in a total reaction volume of 200 μ l in black, 96-well microtiter plates. Fluorescence was measured on a BioTek Synergy HT plate reader using the 480/520-nm excitation/emission filter pair. Following quantitation, cleaned amplicons were combined in equimolar ratios into a single tube. The final pool of DNA was precipitated on ice for 45 minutes following the addition of 5 M NaCl (0.2 M final concentration) and 2 volumes of ice-cold 100%

ethanol. The precipitated DNA was centrifuged at 7,800 x g for 40 minutes at 4°C, and the resulting pellet was washed with an equal volume of ice-cold 70% ethanol and centrifuged again at 7,800 x g for 20 minutes at 4°C. The supernatant was removed and the pellet was air dried for 10 minutes at room temperature and then resuspended in 100 µl of nuclease-free water (MO BIO). The final concentration of the pooled DNA was determined using a NanoDrop spectrophotometer (Thermo Fisher). Pyrosequencing was carried out using primer A on a 454 Life Sciences Genome Sequencer FLX instrument (Roche).

Sequence analysis. Sequences were processed and analyzed following the procedure described by Hamady et al. (S6). Sequences were removed from the analysis if they were <200 or >400 nt, had a quality score <25, contained ambiguous characters, contained an uncorrectable barcode, or did not contain the primer sequence. Remaining sequences were assigned to samples by examining the 12-nt barcode. Similar sequences were clustered into operational taxonomic units (OTUs, also called phylotypes) using cd-hit (S7) with a minimum coverage of 99% and a minimum identity of 97%. While estimates vary, error rates for the GS FLX sequencing instrument are generally reported to be lower than 3% (see paragraph below). A representative sequence was chosen from each OTU by selecting the longest sequence that had the largest number of hits to other sequences in the OTU. Representative sequences were aligned using NAST (S8) and the Greengenes database (S9) with a minimum alignment length of 150 and a minimum identity of 75%. The PH Lane mask was used to screen out hypervariable regions after alignment and includes (i.e., exports) 240 alignment positions between *E. coli* positions 27 – 338 of the Greengenes NAST alignment. Hypervariable regions were removed from

the analysis because they cannot be aligned with certainty across large phylogenetic distances. Following masking and compression, 198 alignment positions were used for phylogenetic inference. A phylogenetic tree was inferred using FastTree (*S10*) with Kimura's 2-parameter model: phylogenetic diversity (PD) results depending on this tree were confirmed by separate analyses in which reads were mapped using BLAST onto the Greengenes reference tree. Taxonomy was assigned using the RDP classifier with a minimum support threshold of 60% (*S11*) and the RDP taxonomic nomenclature.

Quantifying and comparing diversity. To evaluate the amount of diversity contained within communities (alpha diversity) we employed rarefaction plots and primarily branch length-based phylogenetic diversity measurements as described by Faith (*S12*), but also phylotype-based measures. To determine the amount of diversity shared between two communities (beta diversity) we employed the UniFrac metric (*S12-S15*). UniFrac distances are based on the fraction of branch length shared between two communities within a phylogenetic tree constructed from the 16S rRNA gene sequences from all communities being compared. With unweighted UniFrac, only the presence or absence of lineages is considered (community membership). With weighted UniFrac, branch lengths are weighted based on the relative abundances of lineages within communities (community structure). Phylotype-based measures of compositional dissimilarity were also used [primarily Kulczynski's quantitative symmetric measure (*S16*)]. Hierarchical clustering analysis of UniFrac or phylotype-based distances was performed using the unweighted pair group method with arithmetic mean (UPGMA). To control for sampling effort in beta diversity measurements, sequence counts per sample were capped in silico.

Additional comments on sequencing error. As mentioned above, error rates for GS FLX sequencing are generally reported to be lower than 3%, the cutoff used for defining phylotypes in our work. Quinlan et al. (S17) sequenced a known template and found that the error rate was 0.4% overall, but that 96% of these errors were insertions or deletions in homopolymer runs rather than nucleotide substitutions in high-complexity regions, leading to an error rate of 0.042%. Another recently published study estimated an error rate of 0.12% for non-homopolymeric regions and 0.27% in homopolymeric regions (S18) and yet another estimated rates of 0.24% and 0.97% for non-homopolymeric and homopolymeric regions, respectively (S19). Most errors are concentrated in a few exceptionally poor reads: thus the usual, conservative practice is to discard sequences that contain any errors in the primer (including the barcode, if present) and sequences where the average quality score is below 25 (S20), as performed here.

Results

Abundant taxa. Of sequences detected in the gut (as assessed by sampling stool), 59.8% were Bacteroidetes [mainly *Bacteroides* spp. (42.6%)] and 35.2% were Firmicutes. In the oral cavity, the most abundant genera were *Streptococcus* (18.7%; Firmicutes), *Pasteurella* (15.9%; γ Proteobacteria), *Veillonella* (13.9%; Firmicutes), *Prevotella* (13.6%; Bacteroidetes), and *Neisseria* (9.9%; β Proteobacteria). Within the external auditory canal, co-dominant taxa included Firmicutes [Carnobacteriaceae (30.8%) and the genus *Staphylococcus* (24.1%)] and Actinobacteria [Propionibacterineae (20%) and Bifidobacteriales (19.2%)]. To varying degrees, the following groups were abundant on skin, hair and within nostrils: Actinobacteria (Propionibacterineae, Corynebacterineae, and Micrococcineae) and Firmicutes (*Staphylococcus* spp.) (Fig. S4).

Figures

		Date				Habitat
		June 17, 2008	June 18, 2008	Sept. 17, 2008	Sept. 18, 2008	
Source or Site	Forehead	Forehead	Forehead	Forehead	Skin	
	External nose	External nose				
	Lateral pinna (right)	Lateral pinna (right)				
	Lateral pinna (left)	Lateral pinna (left)				
	Axilla (right)	Axilla (right)				
	Axilla (left)	Axilla (left)				
	Volar forearm (right)	Volar forearm (right)				
	Volar forearm (left)	Volar forearm (left)				
	Palm (right)	Palm (right)	Palm (right)	Palm (right)		
	Palm (left)	Palm (left)	Palm (left)	Palm (left)		
	Palmar index finger (right)	Palmar index finger (right)				
	Palmar index finger (left)	Palmar index finger (left)				
	Umbilicus	Umbilicus				
	Glans penis or Labia minora	Glans penis or Labia minora				
	Popliteal fossa (right)	Popliteal fossa (right)	Popliteal fossae	Popliteal fossae		
	Popliteal fossa (left)	Popliteal fossa (left)				
	Plantar foot (right)	Plantar foot (right)	Plantar foot (right)	Plantar foot (right)		
	Plantar foot (left)	Plantar foot (left)	Plantar foot (left)	Plantar foot (left)		
	Hair on head	Hair on head				Hair
	Naris (right)	Naris (right)	Nares	Nares		Nostril
	Naris (left)	Naris (left)				
	External auditory canal (right)	External auditory canal (right)	External auditory canals	External auditory canals		EAC
	External auditory canal (left)	External auditory canal (left)				
	Dorsal tongue	Dorsal tongue	Dorsal tongue	Dorsal tongue		Oral cavity
	Oral cavity rinse	Oral cavity rinse				
	Stool (swab)	Stool (swab)	Stool (swab)	Stool (swab)		Gut
Stool (stab)	Stool (stab)					

		Date			
		June 17, 2008	June 18, 2008	Sept. 17, 2008	Sept. 18, 2008
Person	F1	F1	F1	F1	
	F2	F2	F2	F2	
	F3	F3	F3	F3	
	M1	M1	M1	M1	
	M2	M2	M2	M2	
	M3	M3	M3	M3	
	M4	M4	M4	M4	
			M5	M5	
			M6	M6	

Recipient	Day 1 donor	Day 2 donor
F2	self, F3	self, M1
F3	self, F2	self, M4
M1	self, M4	self, F2
M4	self, M1	self, F3

Fig. S1. Overview of samples obtained for this study. **(A)** Sources of microbiota collected on each date. Body habitat designations are listed at right. **(B)** People who donated microbiota on each date. Subject M2 used an antibiotic 2 weeks prior to the June sampling dates. Grey cells highlight the “core” data set: people who donated microbiota from the indicated sources on all dates and did not take antibiotics. **(C)** People listed in **(B)** who also participated in the skin surface community assembly study. F, female; M, male.

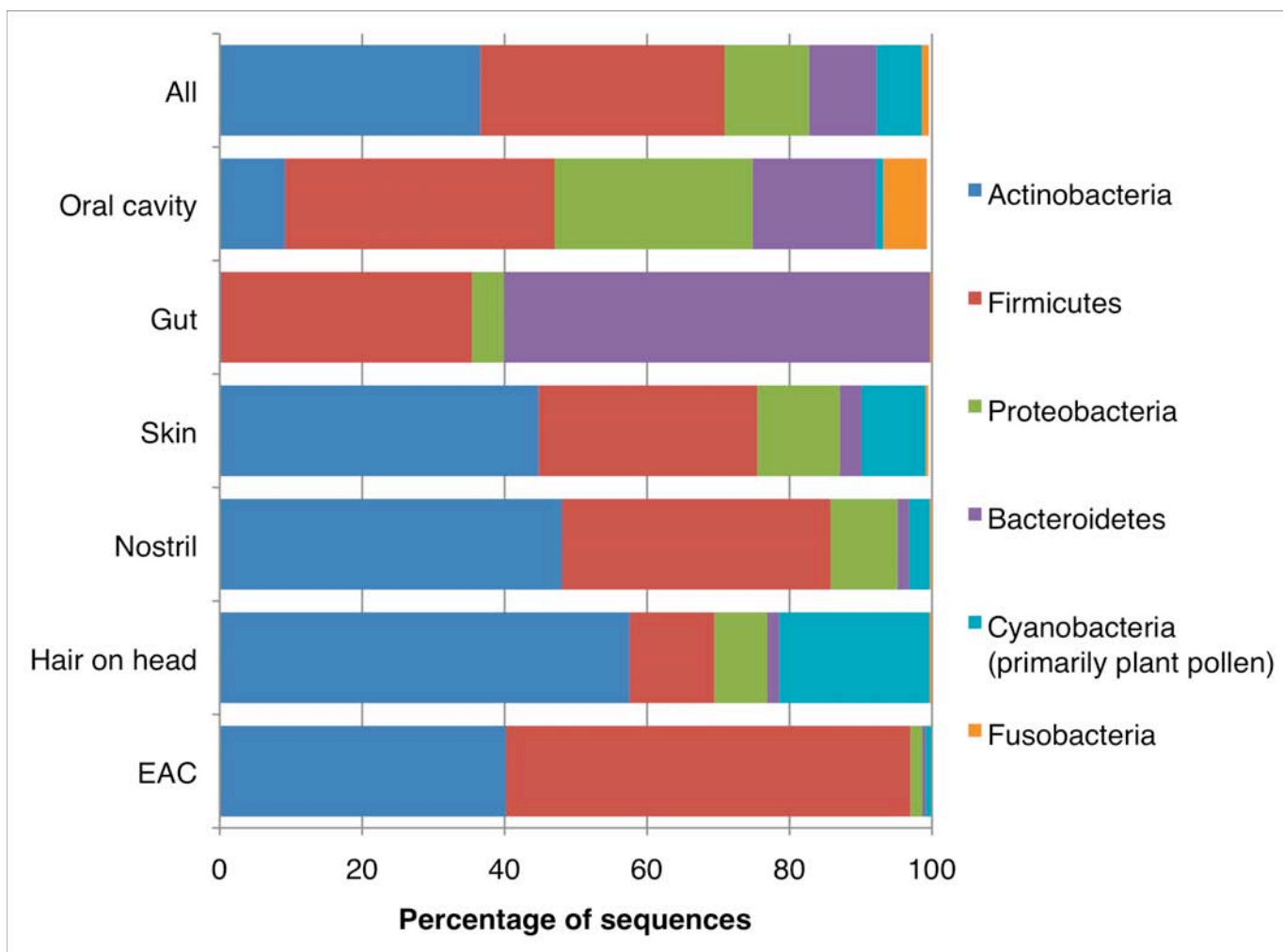


Fig. S2. Relative abundances of the 6 most abundant bacterial phyla in the human body habitats studied. Phyla shown represent 99.6% of sequences sampled. “Cyanobacteria” were primarily related to plant chloroplast sequences (i.e., pollen sampled from surfaces in June) derived from environmental exposures.

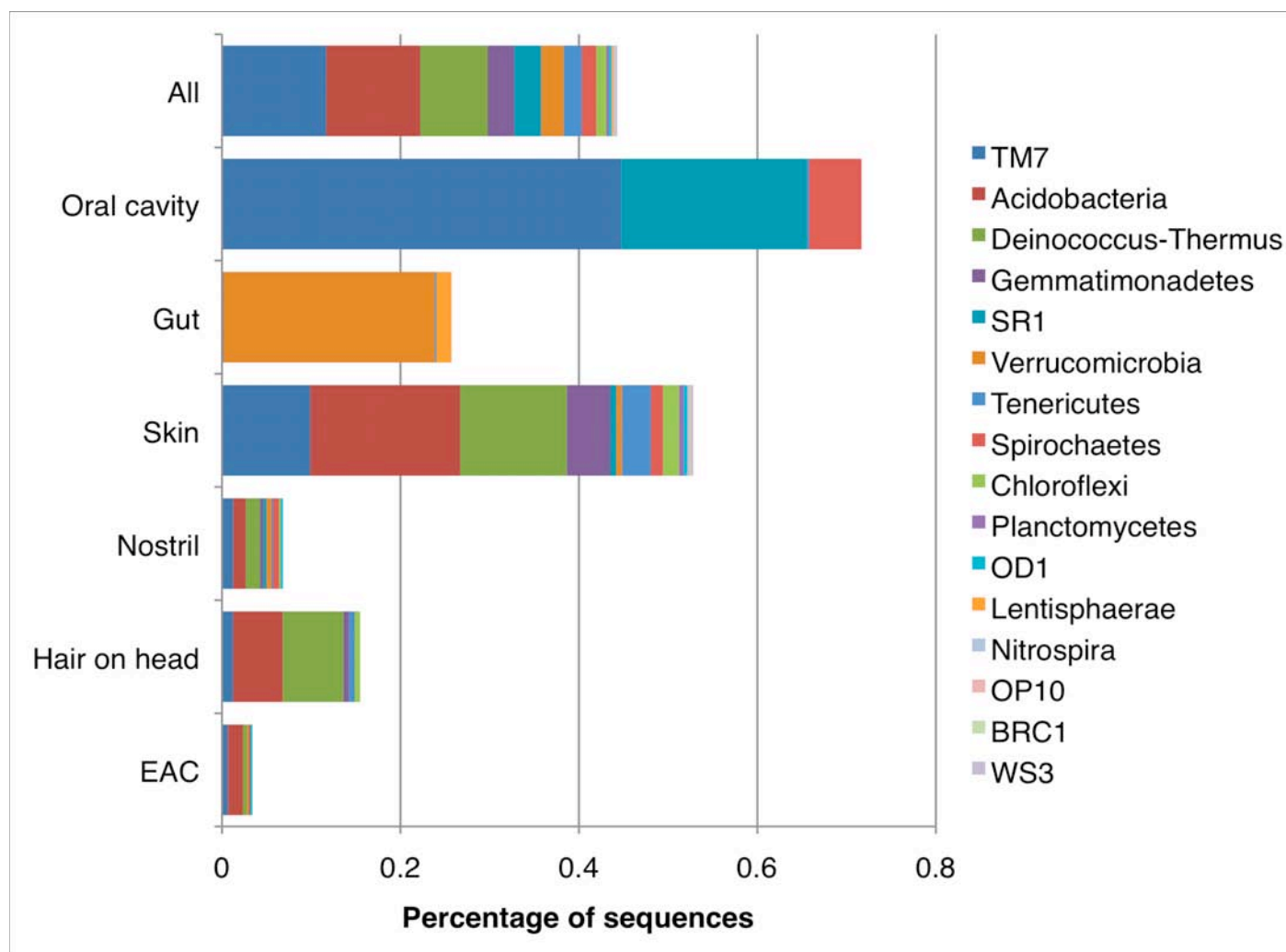


Fig. S3. Relative abundances of rare bacterial phyla found in the human body habitats studied. TM7, SR1, OD1, OP10, BRC1, and WS3 are candidate phyla with no cultivated representatives. Some of the phyla shown are not known to occur among the indigenous human microbiota (e.g., Acidobacteria), however we caution that these sequences may be derived from environmental exposures.

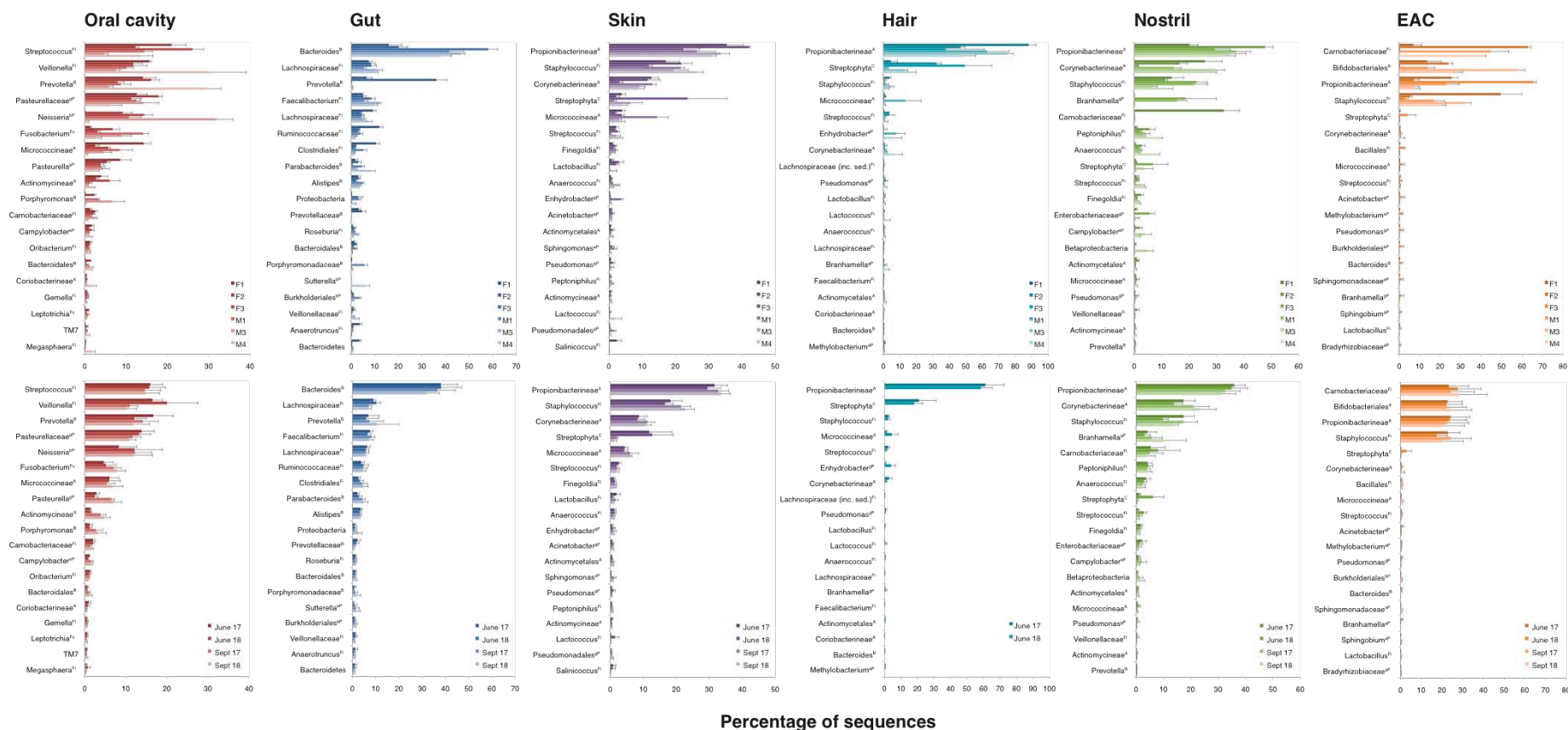


Fig. S4. Relative abundances of the 20 most abundant bacterial taxa in the human body habitats studied averaged over days for each person (top panels) and across people on each day (bottom panels). Groups shown represent 85% of skin, 92% of hair, 96% of nostril, 98% of external auditory canal, 92% of gut, and 96% of oral cavity taxa. Error bars are 1 standard error of the mean for 4 days (top panels) or 6 people (bottom panels). Taxon superscripts indicate the phylum or subphylum: A, Actinobacteria; B, Bacteroidetes; C, “Cyanobacteria” (mainly plant chloroplast sequences); Fi, Firmicutes; Fu, Fusobacteria; aP, α Proteobacteria; bP, β Proteobacteria; gP, γ Proteobacteria; eP, ϵ Proteobacteria. TM7 is a candidate phylum with no cultivated representatives. Taxa are classified to the highest taxonomic level to which they could be confidently assigned.

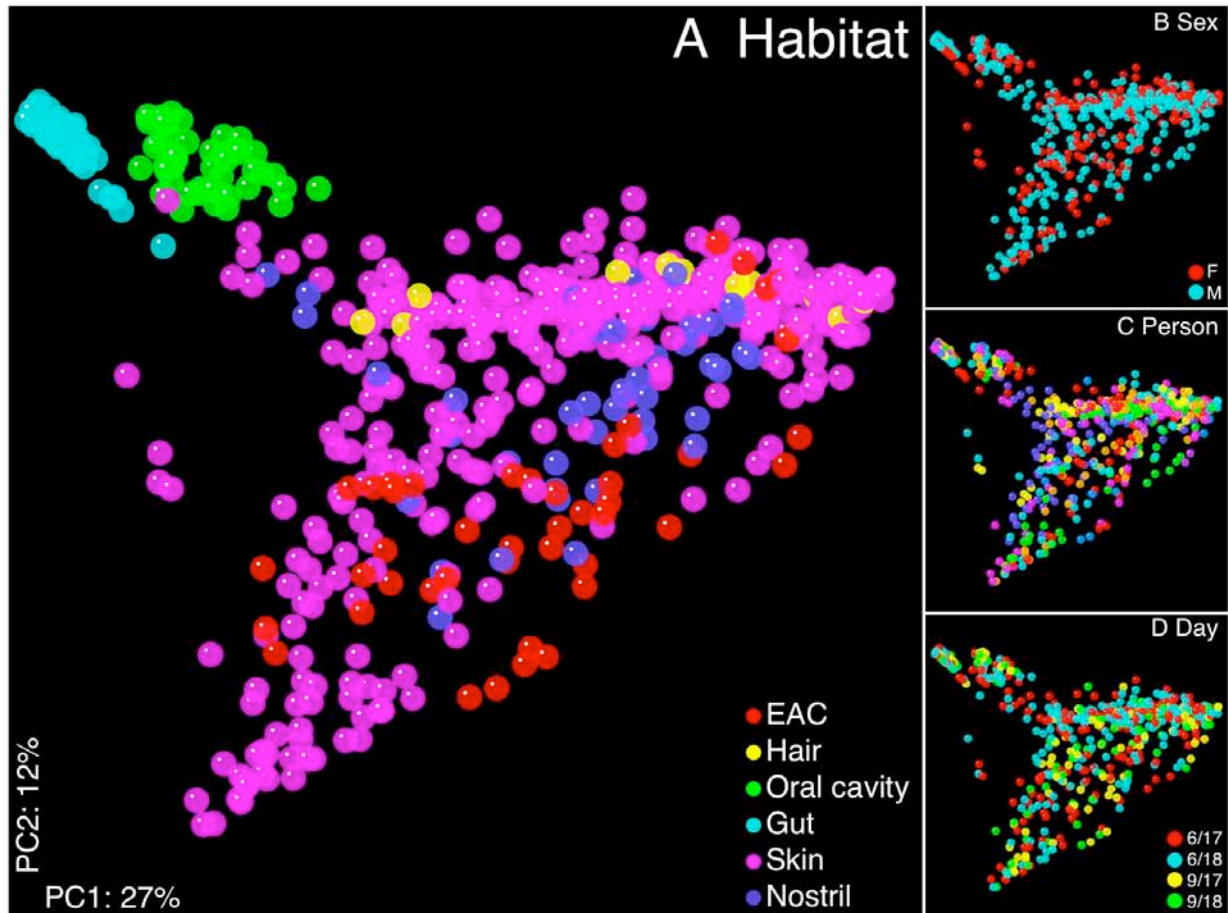


Fig. S5. Communities clustered using principal coordinates analysis (PCoA) of the weighted UniFrac distance matrix. PC1 and PC2 are plotted on x and y axes. Each point corresponds to a community colored according to (A) body habitat, (B) host sex, (C) host individual, or (D) collection date. The same plot is shown in each panel. The percentage of variation explained by the plotted principal coordinates is indicated on the axes. Gut samples separate from oral cavity samples along PC3 (as in Fig. S22). EAC, external auditory canal; F, female; M, male

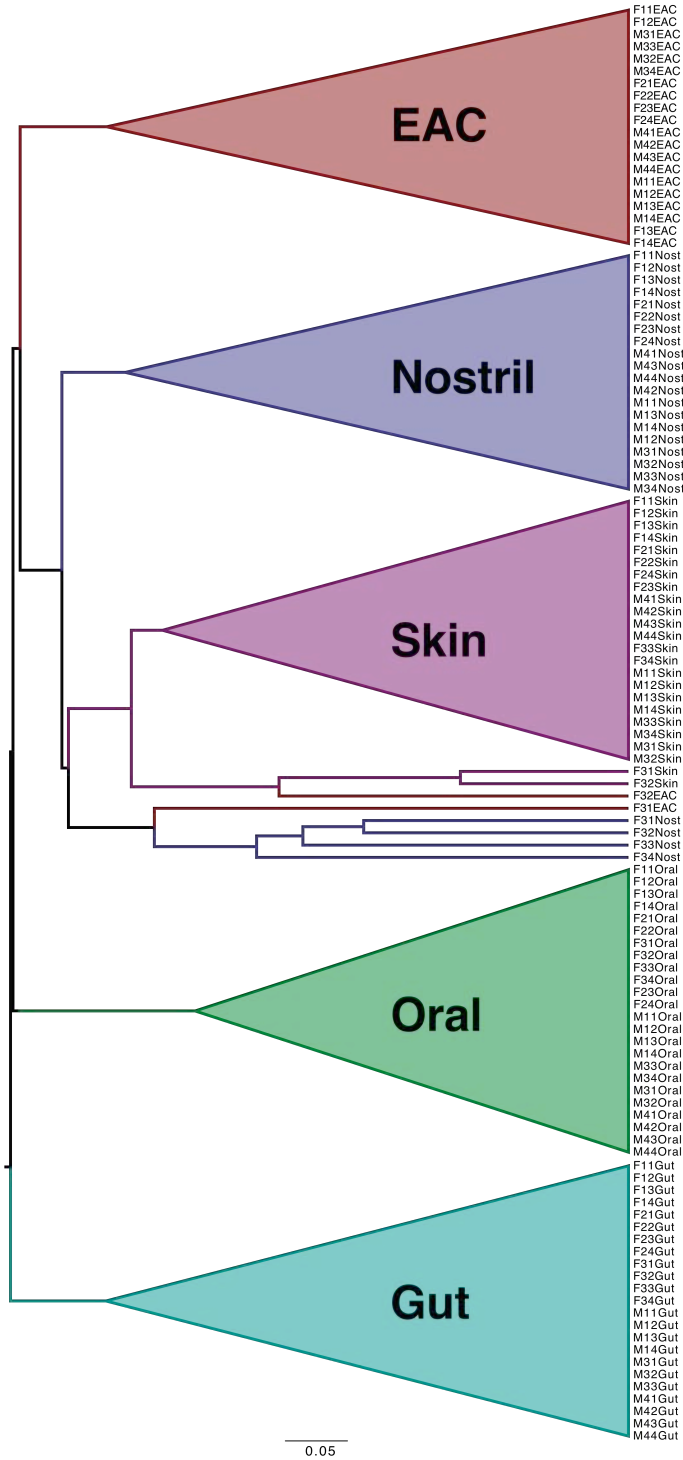


Fig. S6. Hierarchical (UPGMA) clustering of composite communities using a phylotype-based measure of compositional dissimilarity (Kulczynski’s quantitative symmetric measure). Communities are from the composite body habitats of each person sampled on each date. Tip labels contain information about the person, date, and habitat sampled. For example, F22Nost is female volunteer #2’s, day 2 (June 18th), left and right nostril bacterial community. Habitat clusters are collapsed.

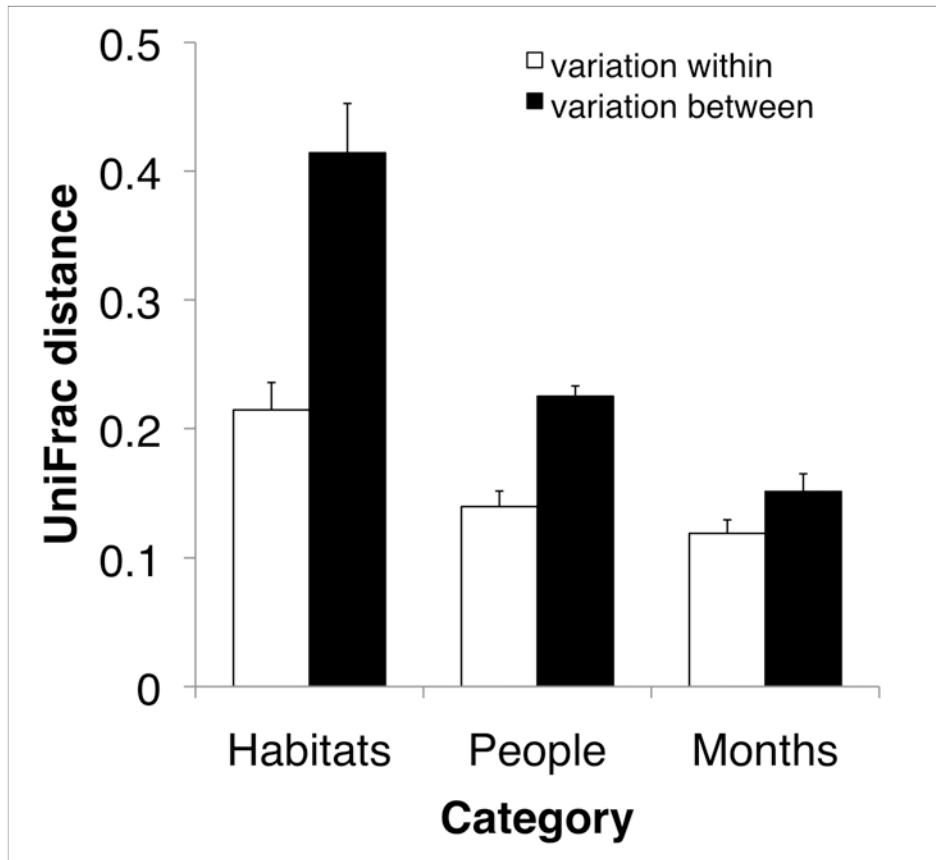


Fig. S7. Average weighted UniFrac distance among communities sampled from the same (white bars) or different (black bars) habitats, people, or months. Variation within was significantly less than variation between ($P < 0.01$ for each comparison, one-tailed t tests). Error bars are 1 standard error of the mean and habitats are weighted equally.

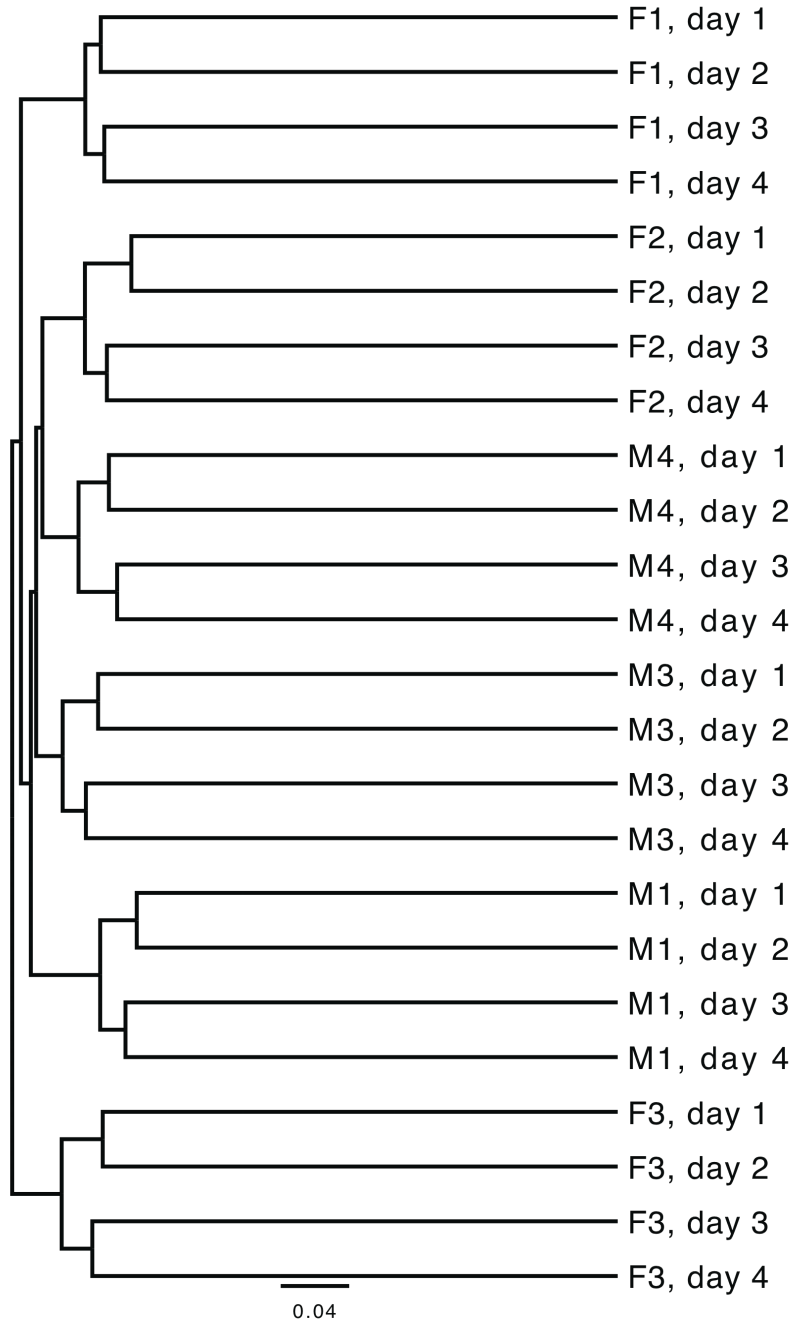


Fig. S8. Hierarchical (UPGMA) clustering of communities using a phylogeny-based measure of compositional similarity, the unweighted UniFrac metric. Samples represent composite “whole-body” communities (as defined with respect to our study) for each person on each date. The same number and types of samples were combined for each person/day. Body habitats were not weighted equally (skin was overrepresented). Sequence counts per sample were capped in silico. day 1, June 17th; day 2, June 18th; day 3, Sept. 17th; day 4, Sept. 18th, 2008.

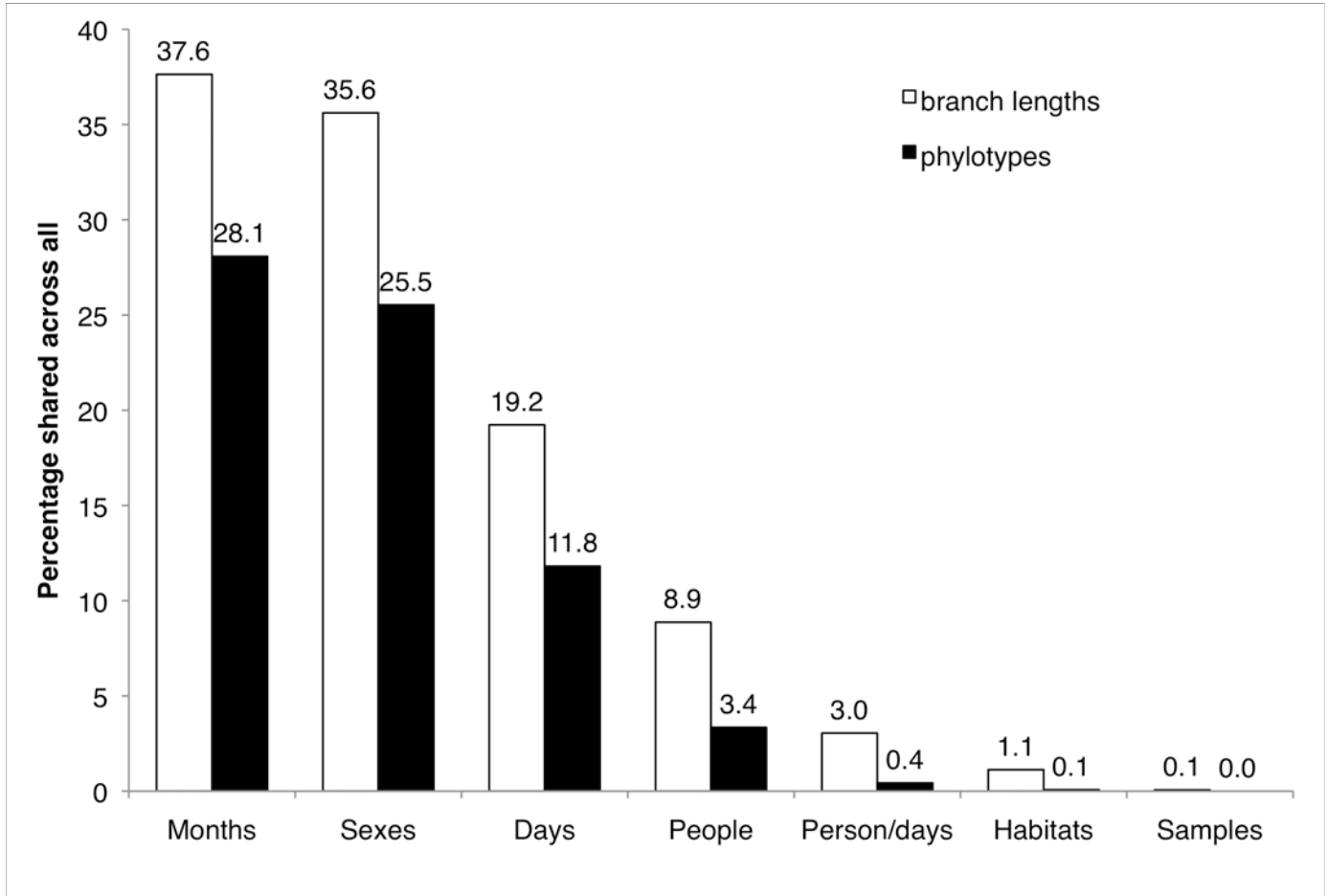


Fig. S9. The relative size of the core “organismal lineage” microbiota: the percentage of bacterial diversity measured in our study that appeared in all composite communities within the categories listed along the horizontal axis, given our level of surveying effort. In 16S rRNA “lineage” surveys, the core can be measured in terms of the percentage of shared phylotypes (OTUs defined at $\geq 97\%$ sequence identity) or evolutionary history (branch lengths in a phylogenetic tree). For example, 28% of phylotypes were observed in both June and September and 38% of the branch segments in the phylogeny had descendents appearing in both months.

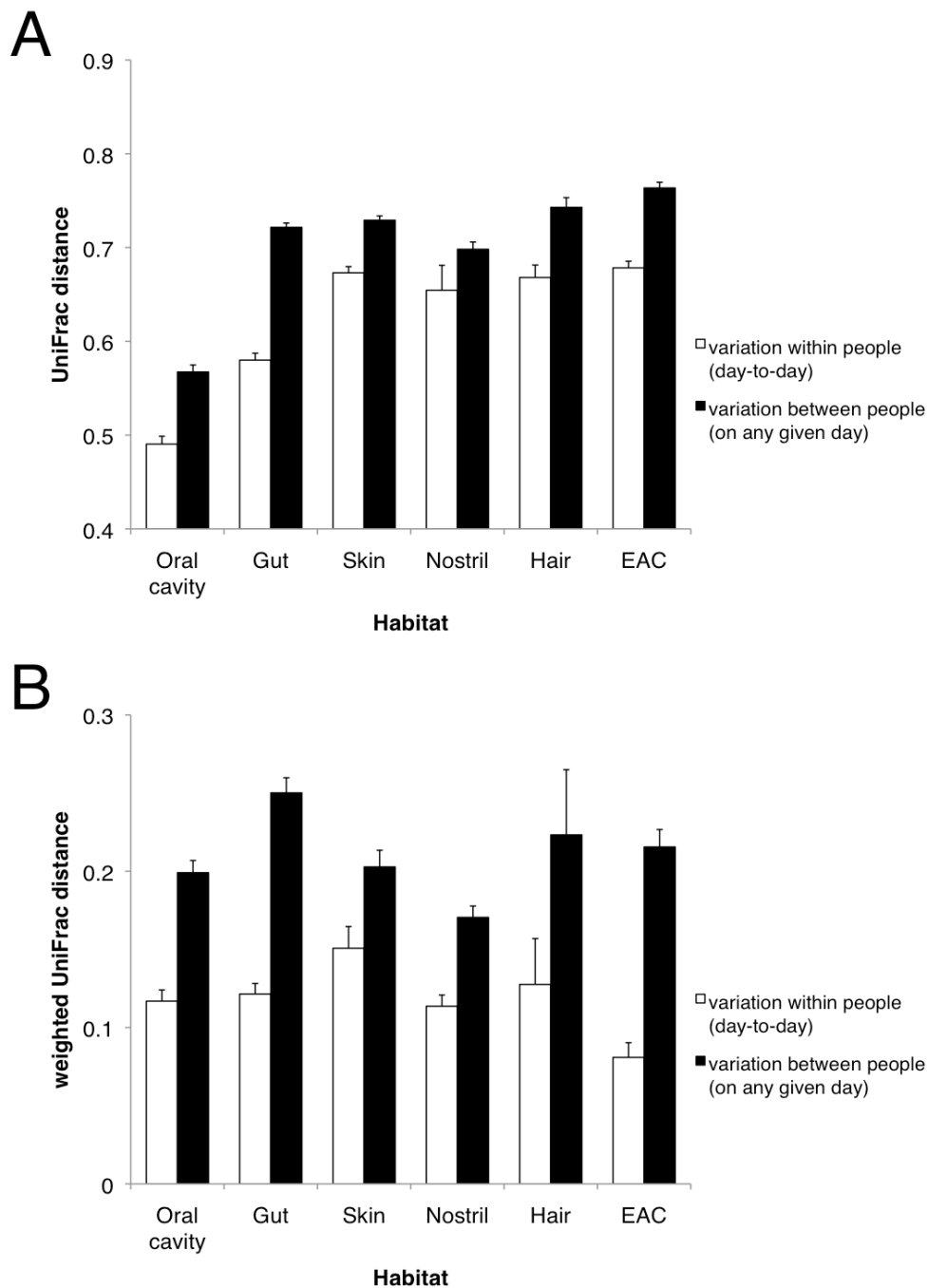


Fig. S10. Inter- and intrapersonal variability within body habitats (and for skin, within sites) measured using average (A) unweighted and (B) weighted UniFrac distances. A portion of panel A appears in the main text (Fig. 1F) with values for nostril, hair, and external auditory canal (EAC) omitted due to space constraints. They are shown here for comparison. Error bars are 1 standard error of the mean.

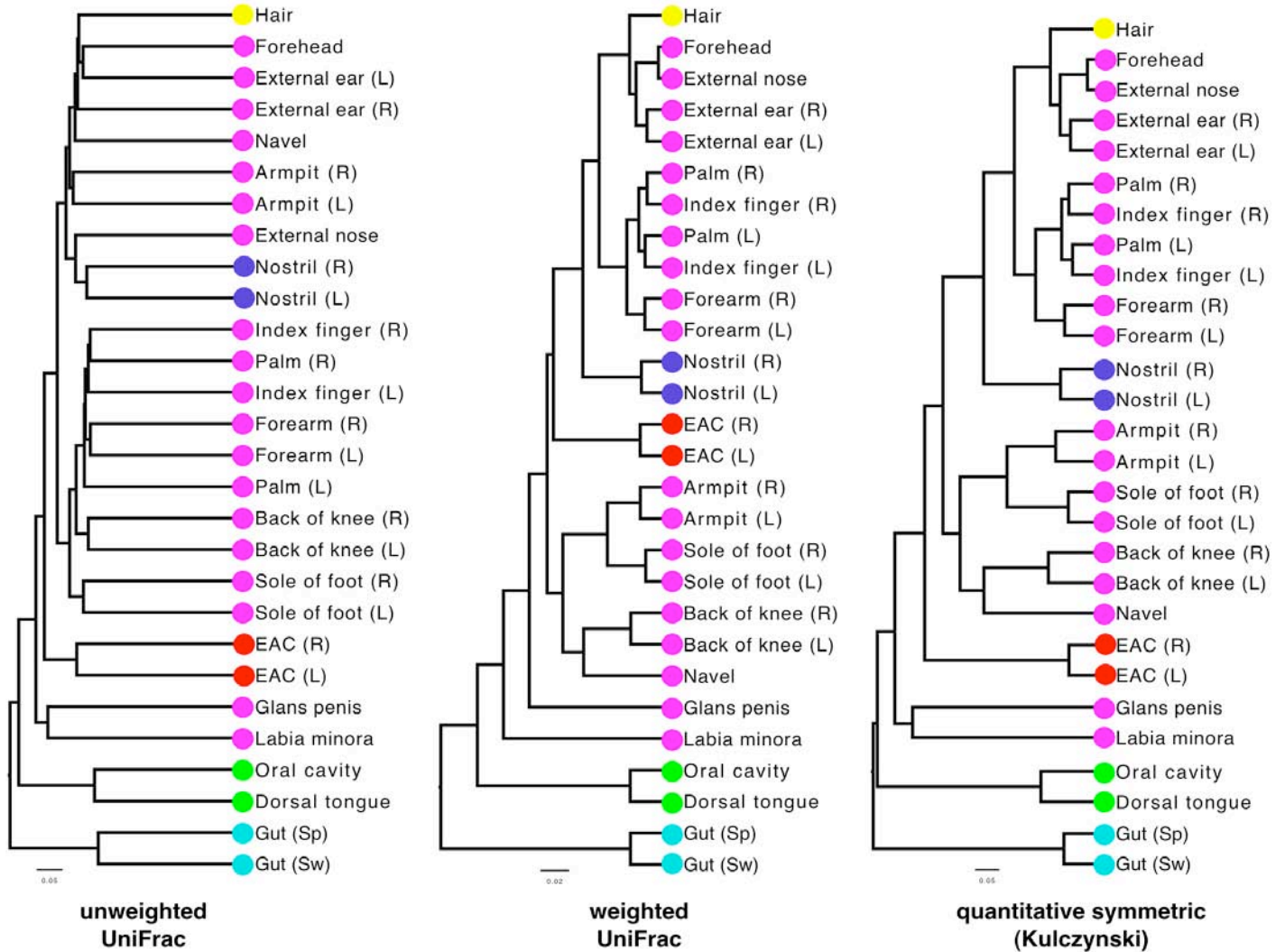


Fig. S11. Dendrograms based on UPGMA clustering of unweighted (left) and weighted (middle) UniFrac distance matrices and Kulczynski’s quantitative symmetric dissimilarity matrix (right). Communities are composites of 6 people sampled in June. Leaves are colored according to body habitat as in Fig. 1A and Fig. S5A. R, right; L, left. Stool samples (i.e., gut) were collected using two methods, Sp and Sw (see Methods for details). The middle dendrogram appears in the main text (Fig. 1G) and is shown here for comparison.

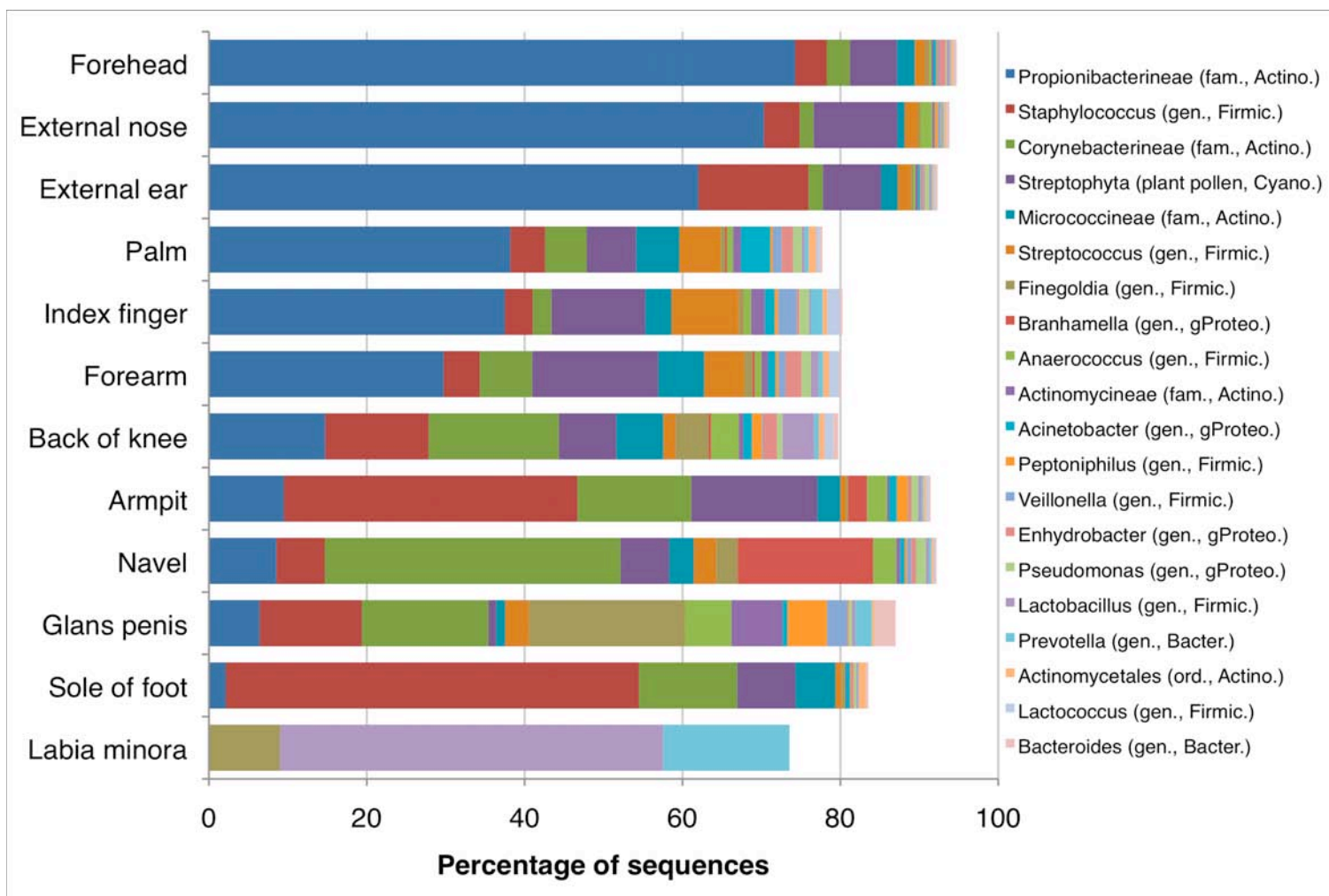


Fig. S12. Relative abundances of the 20 most abundant bacterial taxa at various skin surface locations. Classifications are to the genus (gen.), family (fam.), or order (ord.) level. Sites are ranked according to the relative abundance of *Propionibacterineae*. For each taxon, the phylum or subphylum is also indicated: Actino., Actinobacteria; Bacter., Bacteroidetes; Cyano., “Cyanobacteria” (generally plant pollen); Firmic., Firmicutes; gProteo., γ Proteobacteria. Taxa are classified to the highest taxonomic level to which they were confidently assigned.

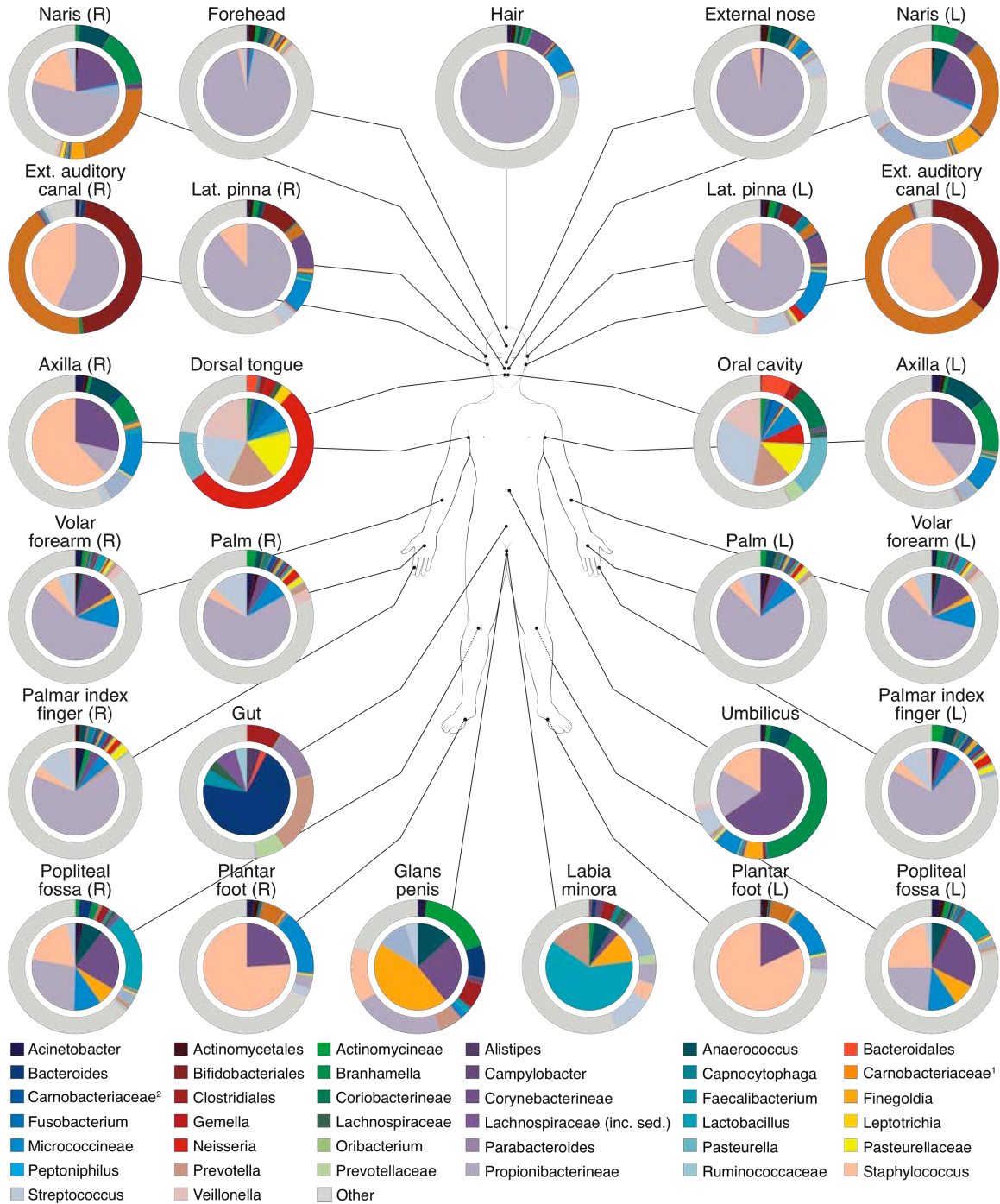


Fig. S13. Core and peripheral taxa within 27 human body habitats/locations. Core taxa shown in central pies were detected in all subjects given our level of survey effort. Peripheral taxa, represented in outer rings, were not detected in all subjects. The 40 most abundant lineages are shown, including all core taxa. “Other” taxa, in gray, represent less abundant peripheral lineages. Taxa are classified to the highest taxonomic level to which they were confidently assigned. R, right; L, left.

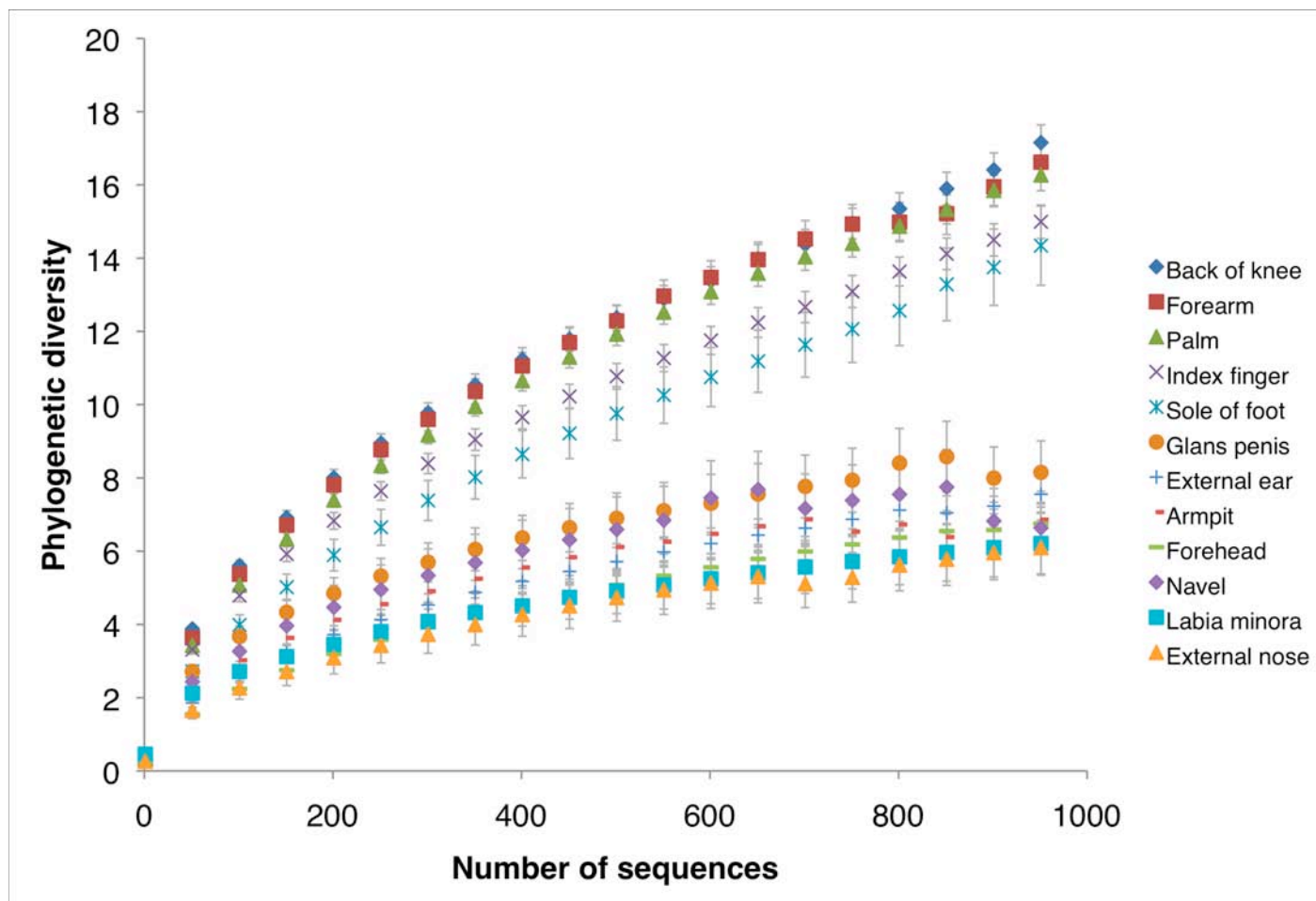


Fig. S14. Site-to-site variation in skin surface bacterial diversity. Phylogenetic diversity rarefaction curves for communities sampled from the listed skin locations of 6 people. Sites track into two groups: high and low diversity. Sites within these two groups were averaged for the rarefaction analysis shown in Fig. 3A of the main text. Mean \pm 95% confidence intervals shown. A decrease (or abrupt increase) in diversity with increasing number of sampled sequences occurs when samples drop from the analysis due to lower total sequence count.

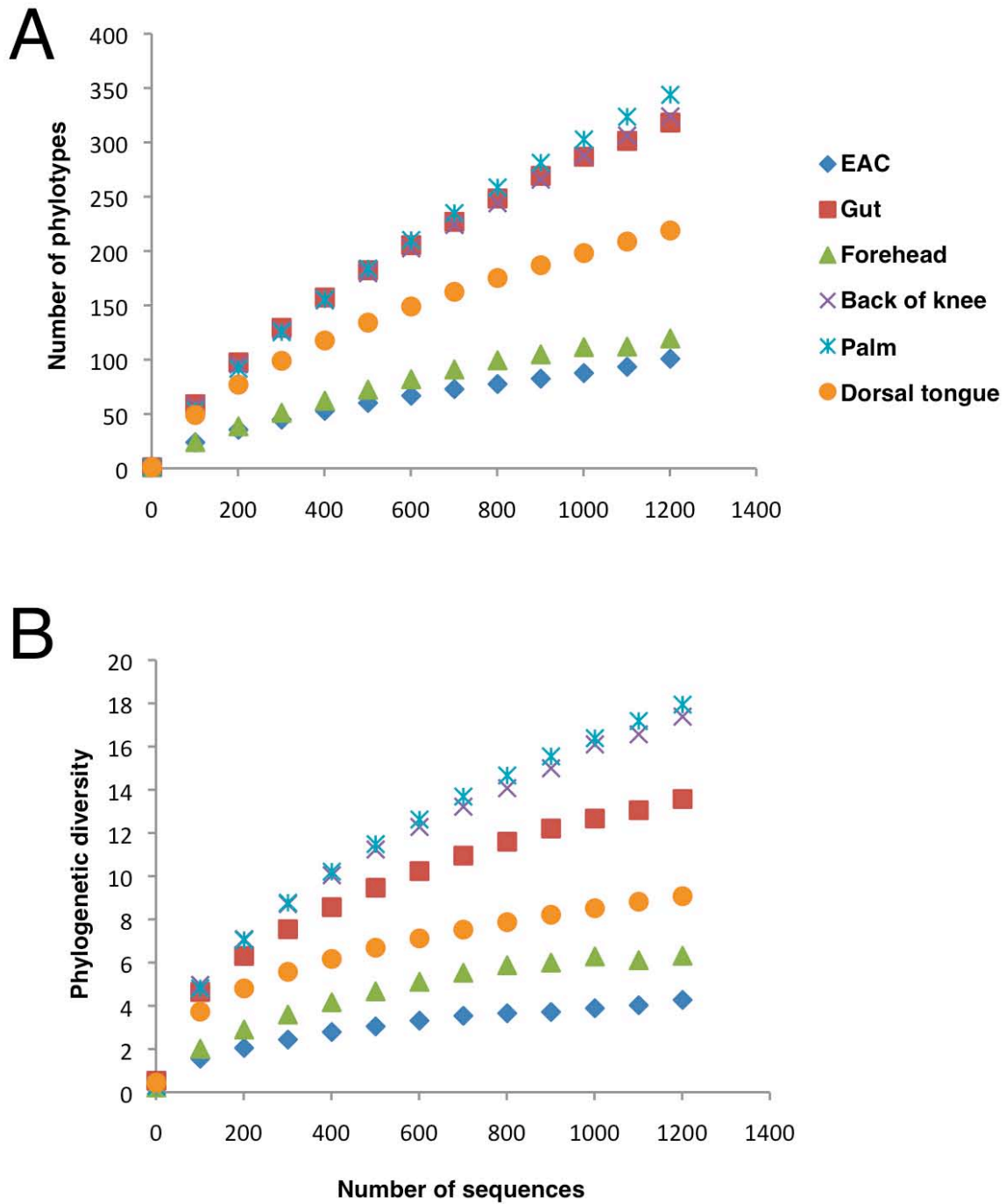


Fig. S15. Comparison of selected high and low diversity skin sites to other body habitats, as measured using (A) the number of phylotypes (species-level OTUs defined at $\geq 97\%$ sequence identity) found within communities and (B) phylogenetic diversity, a branch length-based measure indicative of the amount of evolutionary history represented by a community within a phylogenetic tree.

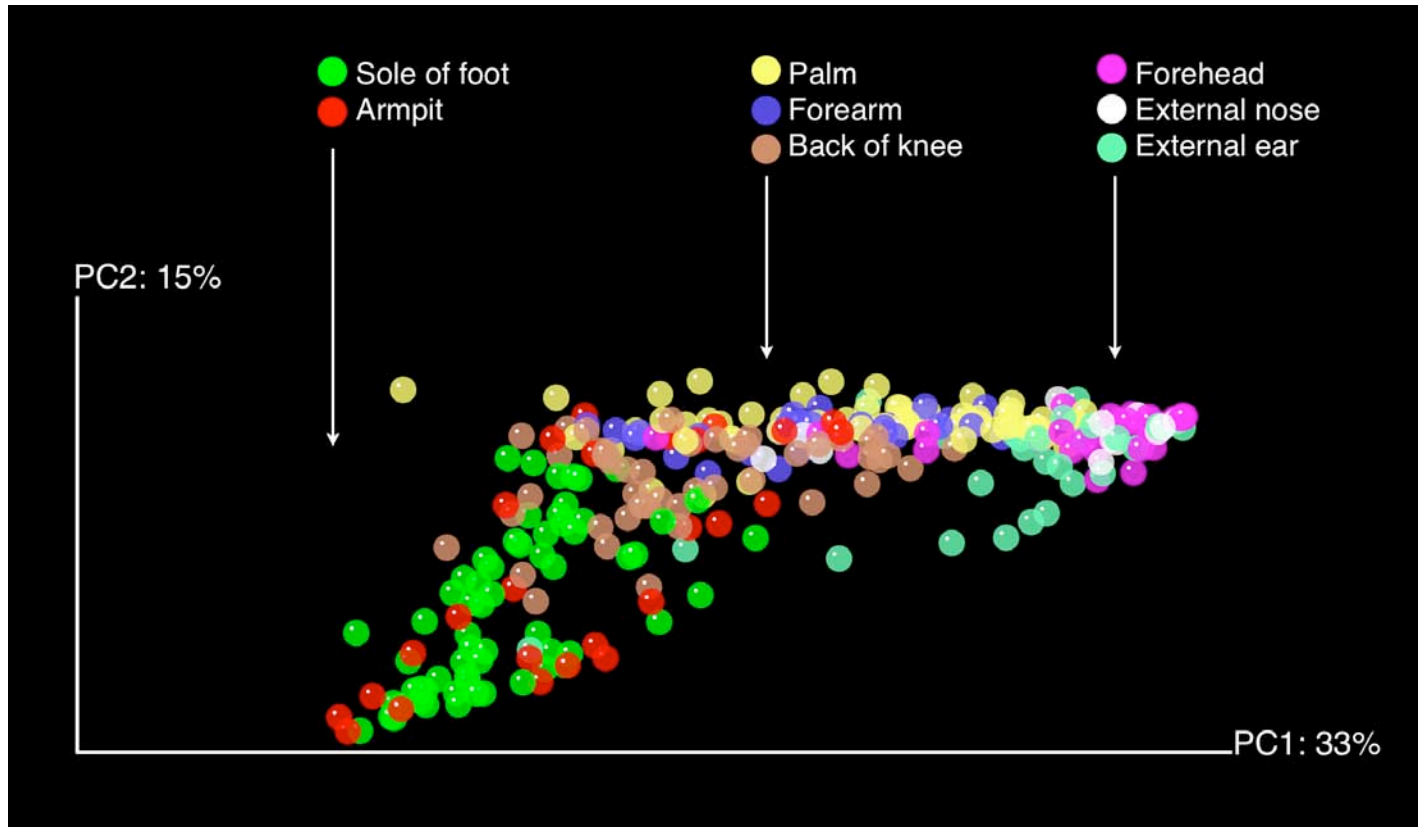


Fig. S16. Skin communities (selected locations) clustered using principal coordinates analysis (PCoA) of the weighted UniFrac distance matrix. Scaled PC1 and PC2 are plotted on x and y axes. Each point corresponds to a community colored according to skin location. The percentage of variation explained by the plotted principal coordinates is indicated on the axes.

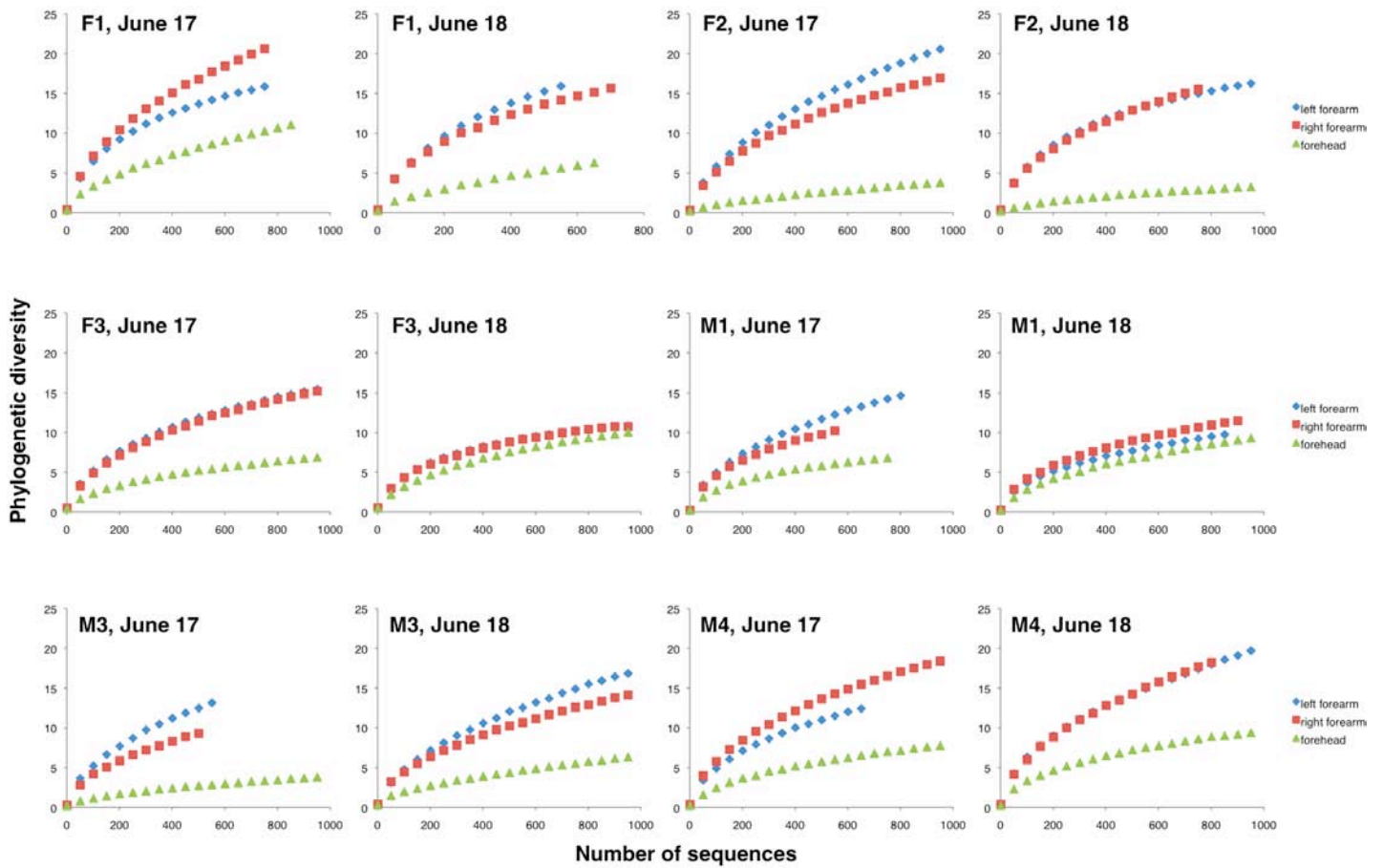


Fig. S17. The forehead is generally less diverse than the forearm. Phylogenetic diversity rarefaction curves for communities sampled from the forehead and volar forearms of 6 people in June. Each curve represents a single sample.

TIME	ACTIVITY	DESCRIPTION								
8:00 AM	SWAB TONGUE	Take 5 tongue swabs simultaneously, one for sequencing and four for input to forehead _{self,other} and forearm _{self,other} .								
8:15 AM	PREPARE FOR SAMPLING	Wear a surgical mask and gloves, draw grids as shown below using alcohol resistant marker.								
8:30 AM	INITIAL SAMPLE TIME = 0 hours	<div style="display: flex; justify-content: space-around; align-items: center;"> <div style="text-align: center;"> <p>Left Forearm</p> <p>thumb</p> <table border="1" style="border-collapse: collapse;"> <tr> <td style="padding: 2px;">1 = swab₁₀, swab_{input self}</td> <td style="padding: 2px;">2 = swab₁₀, swab_{input other}</td> </tr> <tr> <td style="padding: 2px;">3 = swab₁₀</td> <td style="padding: 2px;">4 = swab₁₀</td> </tr> </table> <p>pinkie</p> </div> <div style="text-align: center;"> <p>Forehead</p> <p>hair</p> <table border="1" style="border-collapse: collapse;"> <tr> <td style="padding: 2px;">5 = swab₁₀, swab_{input self}</td> <td style="padding: 2px;">6 = swab₁₀, swab_{input other}</td> </tr> <tr> <td style="padding: 2px;">7 = swab₁₀</td> <td style="padding: 2px;">8 = swab₁₀</td> </tr> </table> <p>nose</p> </div> </div>	1 = swab ₁₀ , swab _{input self}	2 = swab ₁₀ , swab _{input other}	3 = swab ₁₀	4 = swab ₁₀	5 = swab ₁₀ , swab _{input self}	6 = swab ₁₀ , swab _{input other}	7 = swab ₁₀	8 = swab ₁₀
1 = swab ₁₀ , swab _{input self}	2 = swab ₁₀ , swab _{input other}									
3 = swab ₁₀	4 = swab ₁₀									
5 = swab ₁₀ , swab _{input self}	6 = swab ₁₀ , swab _{input other}									
7 = swab ₁₀	8 = swab ₁₀									
8:45 AM	DISINFECT	Wearing gloves, scrub grids with liquid antibiotic soap using sterile sponge and water, rinse, dry, rub with isopropanol, rub with ethanol.								
9:00 AM	TRANSPLANT	<div style="display: flex; justify-content: space-around; align-items: center;"> <div style="text-align: center;"> <p>Left Forearm</p> <p>thumb</p> <table border="1" style="border-collapse: collapse;"> <tr> <td style="padding: 2px;">1 = forehead_{self}</td> <td style="padding: 2px;">2 = forehead_{other}</td> </tr> <tr> <td style="padding: 2px;">3 = tongue_{self}</td> <td style="padding: 2px;">4 = tongue_{other}</td> </tr> </table> <p>pinkie</p> </div> <div style="text-align: center;"> <p>Forehead</p> <p>hair</p> <table border="1" style="border-collapse: collapse;"> <tr> <td style="padding: 2px;">5 = forearm_{self}</td> <td style="padding: 2px;">6 = forearm_{other}</td> </tr> <tr> <td style="padding: 2px;">7 = tongue_{self}</td> <td style="padding: 2px;">8 = tongue_{other}</td> </tr> </table> <p>nose</p> </div> </div>	1 = forehead _{self}	2 = forehead _{other}	3 = tongue _{self}	4 = tongue _{other}	5 = forearm _{self}	6 = forearm _{other}	7 = tongue _{self}	8 = tongue _{other}
1 = forehead _{self}	2 = forehead _{other}									
3 = tongue _{self}	4 = tongue _{other}									
5 = forearm _{self}	6 = forearm _{other}									
7 = tongue _{self}	8 = tongue _{other}									
9:15 AM	COVER	Tape a sterile gauze loosely over the grids to prevent major disturbance.								
11:00 AM	SAMPLE TIME = 2 hours	<div style="display: flex; justify-content: space-around; align-items: center;"> <div style="text-align: center;"> <p>Left Forearm</p> <p>thumb</p> <table border="1" style="border-collapse: collapse;"> <tr> <td style="padding: 2px;">1 = swab₁₂</td> <td style="padding: 2px;">2 = swab₁₂</td> </tr> <tr> <td style="padding: 2px;">3 = swab₁₂</td> <td style="padding: 2px;">4 = swab₁₂</td> </tr> </table> <p>pinkie</p> </div> <div style="text-align: center;"> <p>Forehead</p> <p>hair</p> <table border="1" style="border-collapse: collapse;"> <tr> <td style="padding: 2px;">5 = swab₁₂</td> <td style="padding: 2px;">6 = swab₁₂</td> </tr> <tr> <td style="padding: 2px;">7 = swab₁₂</td> <td style="padding: 2px;">8 = swab₁₂</td> </tr> </table> <p>nose</p> </div> </div>	1 = swab ₁₂	2 = swab ₁₂	3 = swab ₁₂	4 = swab ₁₂	5 = swab ₁₂	6 = swab ₁₂	7 = swab ₁₂	8 = swab ₁₂
1 = swab ₁₂	2 = swab ₁₂									
3 = swab ₁₂	4 = swab ₁₂									
5 = swab ₁₂	6 = swab ₁₂									
7 = swab ₁₂	8 = swab ₁₂									
1:00 PM	SAMPLE TIME = 4 hours	<div style="display: flex; justify-content: space-around; align-items: center;"> <div style="text-align: center;"> <p>Left Forearm</p> <p>thumb</p> <table border="1" style="border-collapse: collapse;"> <tr> <td style="padding: 2px;">1 = swab₁₄</td> <td style="padding: 2px;">2 = swab₁₄</td> </tr> <tr> <td style="padding: 2px;">3 = swab₁₄</td> <td style="padding: 2px;">4 = swab₁₄</td> </tr> </table> <p>pinkie</p> </div> <div style="text-align: center;"> <p>Forehead</p> <p>hair</p> <table border="1" style="border-collapse: collapse;"> <tr> <td style="padding: 2px;">5 = swab₁₄</td> <td style="padding: 2px;">6 = swab₁₄</td> </tr> <tr> <td style="padding: 2px;">7 = swab₁₄</td> <td style="padding: 2px;">8 = swab₁₄</td> </tr> </table> <p>nose</p> </div> </div>	1 = swab ₁₄	2 = swab ₁₄	3 = swab ₁₄	4 = swab ₁₄	5 = swab ₁₄	6 = swab ₁₄	7 = swab ₁₄	8 = swab ₁₄
1 = swab ₁₄	2 = swab ₁₄									
3 = swab ₁₄	4 = swab ₁₄									
5 = swab ₁₄	6 = swab ₁₄									
7 = swab ₁₄	8 = swab ₁₄									
5:00 PM	SAMPLE TIME = 8 hours	<div style="display: flex; justify-content: space-around; align-items: center;"> <div style="text-align: center;"> <p>Left Forearm</p> <p>thumb</p> <table border="1" style="border-collapse: collapse;"> <tr> <td style="padding: 2px;">1 = swab₁₈</td> <td style="padding: 2px;">2 = swab₁₈</td> </tr> <tr> <td style="padding: 2px;">3 = swab₁₈</td> <td style="padding: 2px;">4 = swab₁₈</td> </tr> </table> <p>pinkie</p> </div> <div style="text-align: center;"> <p>Forehead</p> <p>hair</p> <table border="1" style="border-collapse: collapse;"> <tr> <td style="padding: 2px;">5 = swab₁₈</td> <td style="padding: 2px;">6 = swab₁₈</td> </tr> <tr> <td style="padding: 2px;">7 = swab₁₈</td> <td style="padding: 2px;">8 = swab₁₈</td> </tr> </table> <p>nose</p> </div> </div>	1 = swab ₁₈	2 = swab ₁₈	3 = swab ₁₈	4 = swab ₁₈	5 = swab ₁₈	6 = swab ₁₈	7 = swab ₁₈	8 = swab ₁₈
1 = swab ₁₈	2 = swab ₁₈									
3 = swab ₁₈	4 = swab ₁₈									
5 = swab ₁₈	6 = swab ₁₈									
7 = swab ₁₈	8 = swab ₁₈									

Fig. S18. Experimental design and timeline of activities for the skin site bacterial community assembly study. The procedure was performed on two consecutive days.

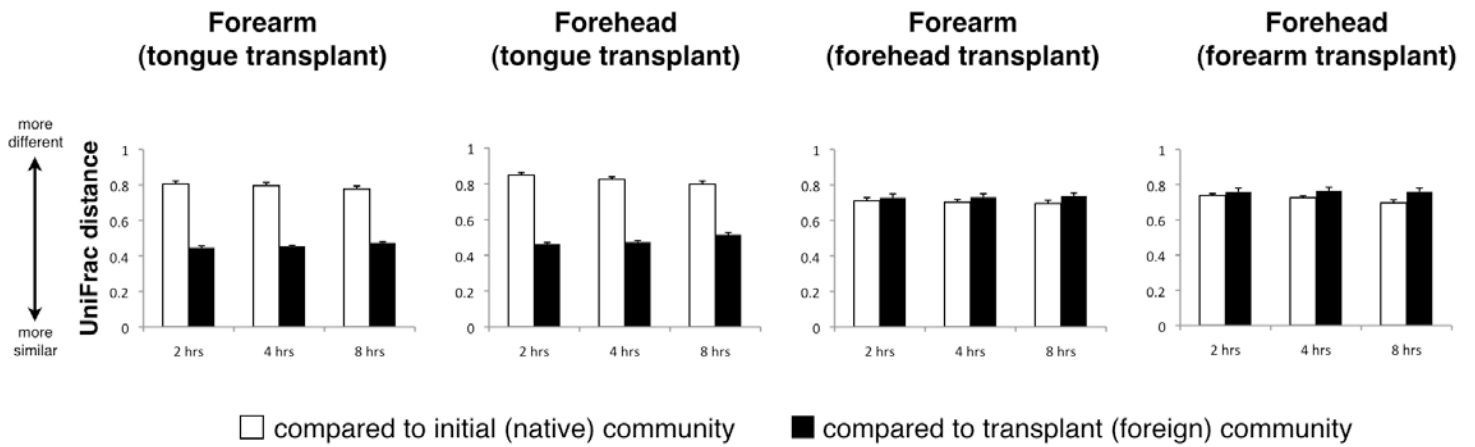


Fig. S19. Unweighted UniFrac results for transplantation experiment. Foreign microbiotas were transplanted (“input”) onto disinfected plots on the forearm and forehead, followed by sampling at 2, 4, and 8 hours. Native microbiotas (“initial”) were collected prior to disinfection. The graph shows average unweighted UniFrac distances of samples compared to native (white bars) and transplanted (black bars) communities. Error bars are 1 standard error of the mean.

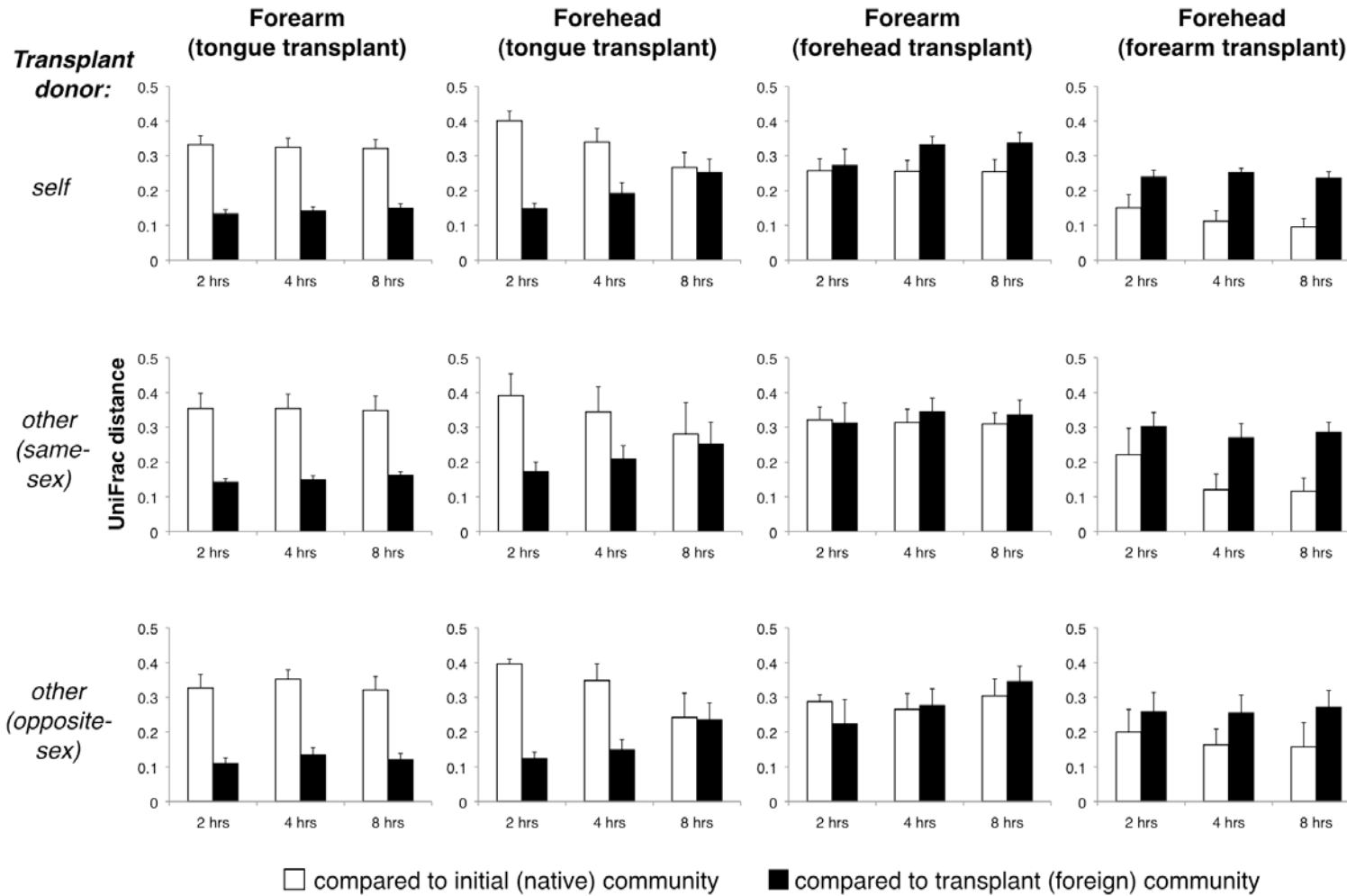


Fig. S20. Transplant donor effects on the structural similarity (weighted UniFrac distance) of assembling skin communities compared to native (white bars) and transplanted (black bars) microbiotas. Upper panels, intrapersonal transplant; middle panels, interpersonal transplant from same-sex individual; bottom panels, interpersonal transplant from opposite-sex individual.

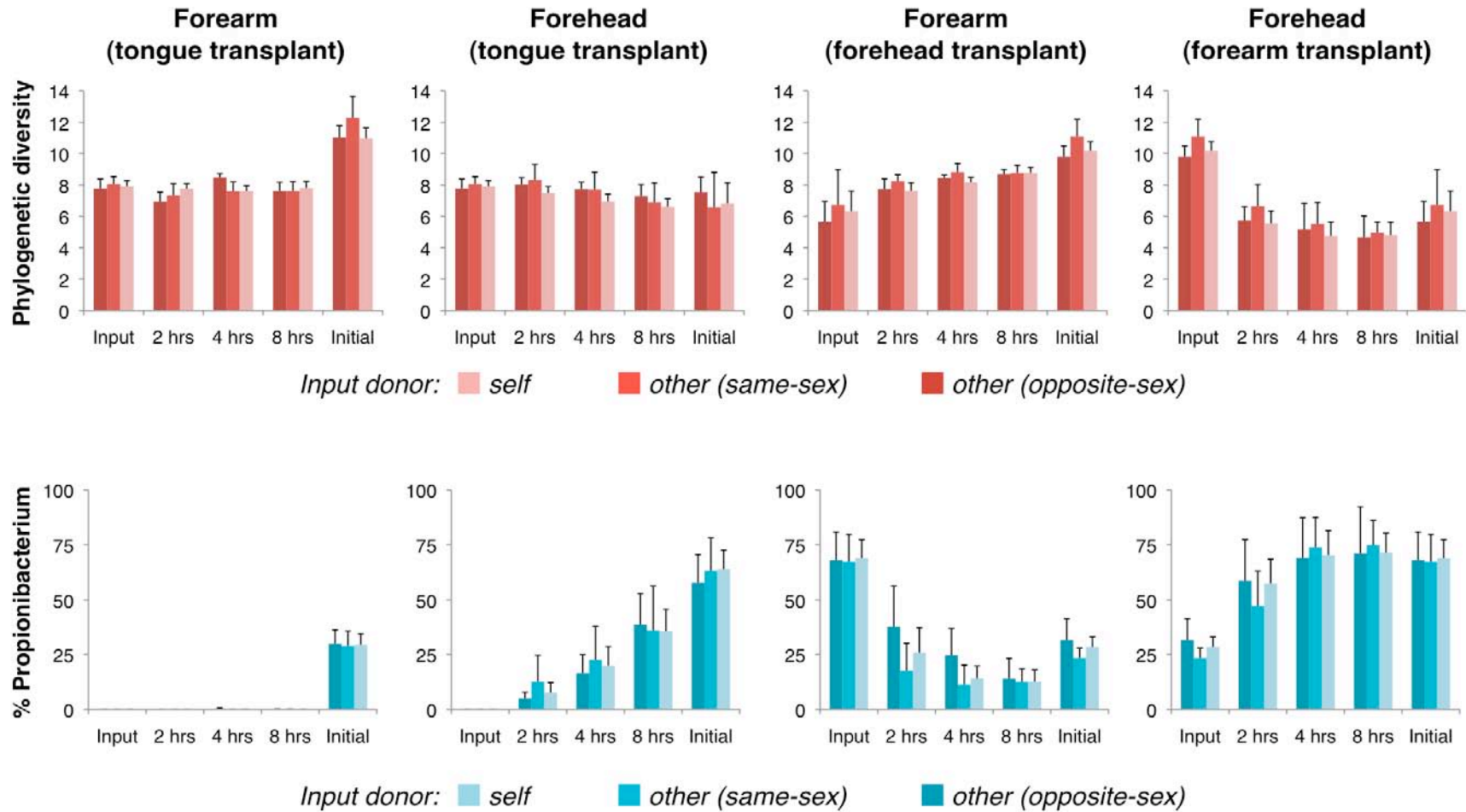


Fig. S21. Transplant donor effects on the phylogenetic diversity (upper panels) and relative abundance of *Propionibacterium* spp. (lower panels) within assembling skin communities post-disinfection and transplant with foreign (input) microbiotas. Light-shaded bars, intrapersonal transplant; medium-shaded bars, interpersonal transplant from same-sex individual; dark-shaded bars, interpersonal transplant from opposite-sex individual.

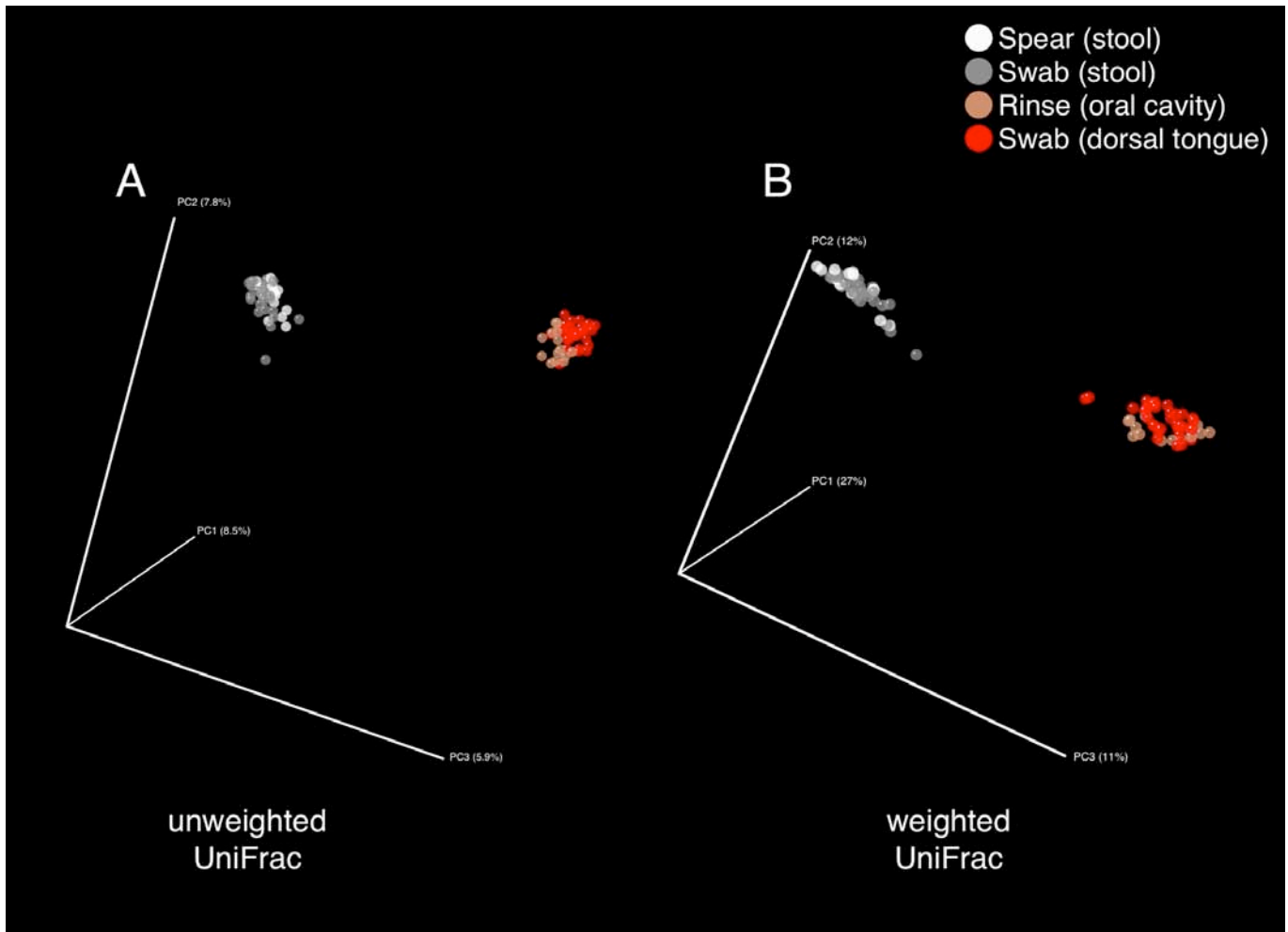


Fig. S22. Methods developed for this study. Stool samples collected off used bathroom tissue were compositionally indistinguishable from stool collected by stabbing the swab directly into the fecal material as shown using PCoA of (A) unweighted and (B) weighted UniFrac distances. Likewise, oral cavity samples collected using dorsal tongue swabs clustered tightly with those collected using sterile water rinses.

Table S1. Sample information

#	SampleID	No. of reads	Sample site (anatomical)	Sample site (common)	Body habitat	Host sex, indiv	Day	Sample method	Study	Treatment
1	F11Aptl	748	left axilla	left armpit	Skin	F1	6/17/08	swab w/ sterile saline	whole-body	none
2	F11Apr	506	right axilla	right armpit	Skin	F1	6/17/08	swab w/ sterile saline	whole-body	none
3	F11Ewxl	880	left external auditory canal	left outer ear canal/earwax	EAC	F1	6/17/08	swab	whole-body	none
4	F11Ewxr	811	right external auditory canal	right outer ear canal/earwax	EAC	F1	6/17/08	swab	whole-body	none
5	F11Fcsp	586	stool	stool	Gut	F1	6/17/08	swab stabbed into stool	whole-body	none
6	F11Fcsw	1002	stool	stool	Gut	F1	6/17/08	swab off used toilet paper	whole-body	none
7	F11Forl	790	left volar forearm	left forearm	Skin	F1	6/17/08	swab w/ sterile saline	whole-body	none
8	F11Forr	756	right volar forearm	right forearm	Skin	F1	6/17/08	swab w/ sterile saline	whole-body	none
9	F11Fotl	962	left plantar foot	left sole of foot	Skin	F1	6/17/08	swab w/ sterile saline	whole-body	none
10	F11Fotr	854	right plantar foot	right sole of foot	Skin	F1	6/17/08	swab w/ sterile saline	whole-body	none
11	F11Frhd	855	forehead	forehead	Skin	F1	6/17/08	swab w/ sterile saline	whole-body	none
12	F11Hair	656	hair on head	hair on head	Hair	F1	6/17/08	swab w/ sterile saline	whole-body	none
13	F11Indl	829	left palmar index finger	left index finger	Skin	F1	6/17/08	swab w/ sterile saline	whole-body	none
14	F11Indr	763	right palmar index finger	right index finger	Skin	F1	6/17/08	swab w/ sterile saline	whole-body	none
15	F11Knel	608	left popliteal fossa	left back of knees	Skin	F1	6/17/08	swab w/ sterile saline	whole-body	none
16	F11Kner	625	right popliteal fossa	right back of knees	Skin	F1	6/17/08	swab w/ sterile saline	whole-body	none
17	F11Labi	999	labia minora	labia minora	Skin	F1	6/17/08	swab w/ sterile saline	whole-body	none
18	F11Mout	925	oral cavity	mouth	Oral cavity	F1	6/17/08	rinse w/ sterile water	whole-body	none
19	F11Navl	1247	umbilicus	navel	Skin	F1	6/17/08	swab w/ sterile saline	whole-body	none
20	F11Nose	955	external nose	external nose	Skin	F1	6/17/08	swab w/ sterile saline	whole-body	none
21	F11Nstl	973	left naris	left nostril	Nostril	F1	6/17/08	swab w/ sterile saline	whole-body	none
22	F11Nstr	1099	right naris	right nostril	Nostril	F1	6/17/08	swab w/ sterile saline	whole-body	none
23	F11Pinl	820	left lateral pinna	left outer ear	Skin	F1	6/17/08	swab w/ sterile saline	whole-body	none
24	F11Pinr	1273	right lateral pinna	right outer ear	Skin	F1	6/17/08	swab w/ sterile saline	whole-body	none
25	F11Plml	718	left palm	left palm	Skin	F1	6/17/08	swab w/ sterile saline	whole-body	none
26	F11Plmr	684	right palm	right palm	Skin	F1	6/17/08	swab w/ sterile saline	whole-body	none
27	F11Tong	1625	dorsal surface of tongue	tongue	Oral cavity	F1	6/17/08	swab	whole-body	none
28	F12Aptl	1064	left axilla	left armpit	Skin	F1	6/18/08	swab w/ sterile saline	whole-body	none
29	F12Apr	967	right axilla	right armpit	Skin	F1	6/18/08	swab w/ sterile saline	whole-body	none
30	F12Ewxl	896	left external auditory canal	left outer ear canal/earwax	EAC	F1	6/18/08	swab	whole-body	none
31	F12Ewxr	538	right external auditory canal	right outer ear canal/earwax	EAC	F1	6/18/08	swab	whole-body	none
32	F12Fcsp	925	stool	stool	Gut	F1	6/18/08	swab stabbed into stool	whole-body	none
33	F12Fcsw	914	stool	stool	Gut	F1	6/18/08	swab off used toilet paper	whole-body	none
34	F12Forl	575	left volar forearm	left forearm	Skin	F1	6/18/08	swab w/ sterile saline	whole-body	none
35	F12Forr	707	right volar forearm	right forearm	Skin	F1	6/18/08	swab w/ sterile saline	whole-body	none
36	F12Fotl	1678	left plantar foot	left sole of foot	Skin	F1	6/18/08	swab w/ sterile saline	whole-body	none

Table S1. Sample information

#	SampleID	No. of reads	Sample site (anatomical)	Sample site (common)	Body habitat	Host sex, indiv	Day	Sample method	Study	Treatment
37	F12Fotr	1560	right plantar foot	right sole of foot	Skin	F1	6/18/08	swab w/ sterile saline	whole-body	none
38	F12Frhd	658	forehead	forehead	Skin	F1	6/18/08	swab w/ sterile saline	whole-body	none
39	F12Hair	868	hair on head	hair on head	Hair	F1	6/18/08	swab w/ sterile saline	whole-body	none
40	F12Inld	1401	left palmar index finger	left index finger	Skin	F1	6/18/08	swab w/ sterile saline	whole-body	none
41	F12Indr	1185	right palmar index finger	right index finger	Skin	F1	6/18/08	swab w/ sterile saline	whole-body	none
42	F12Knel	679	left popliteal fossa	left back of knees	Skin	F1	6/18/08	swab w/ sterile saline	whole-body	none
43	F12Kner	1046	right popliteal fossa	right back of knees	Skin	F1	6/18/08	swab w/ sterile saline	whole-body	none
44	F12Labi	1629	labia minora	labia minora	Skin	F1	6/18/08	swab w/ sterile saline	whole-body	none
45	F12Mout	1694	oral cavity	mouth	Oral cavity	F1	6/18/08	rinse w/ sterile water	whole-body	none
46	F12Navl	1708	umbilicus	navel	Skin	F1	6/18/08	swab w/ sterile saline	whole-body	none
47	F12Nose	1311	external nose	external nose	Skin	F1	6/18/08	swab w/ sterile saline	whole-body	none
48	F12Nstl	1495	left naris	left nostril	Nostril	F1	6/18/08	swab w/ sterile saline	whole-body	none
49	F12Nstr	1433	right naris	right nostril	Nostril	F1	6/18/08	swab w/ sterile saline	whole-body	none
50	F12Pinl	1744	left lateral pinna	left outer ear	Skin	F1	6/18/08	swab w/ sterile saline	whole-body	none
51	F12Pinr	1317	right lateral pinna	right outer ear	Skin	F1	6/18/08	swab w/ sterile saline	whole-body	none
52	F12Plml	1336	left palm	left palm	Skin	F1	6/18/08	swab w/ sterile saline	whole-body	none
53	F12Plmr	1533	right palm	right palm	Skin	F1	6/18/08	swab w/ sterile saline	whole-body	none
54	F12Tong	1977	dorsal surface of tongue	tongue	Oral cavity	F1	6/18/08	swab	whole-body	none
55	F13Ewax	1222	external auditory canal	outer ear canal/earwax	EAC	F1	9/17/08	swab	whole-body	none
56	F13Fcsw	1286	stool	stool	Gut	F1	9/17/08	swab off used toilet paper	whole-body	none
57	F13Fotl	988	left plantar foot	left sole of foot	Skin	F1	9/17/08	swab w/ sterile saline	whole-body	none
58	F13Fotr	1396	right plantar foot	right sole of foot	Skin	F1	9/17/08	swab w/ sterile saline	whole-body	none
59	F13Frhd	1001	forehead	forehead	Skin	F1	9/17/08	swab w/ sterile saline	whole-body	none
60	F13Knee	1252	popliteal fossae	back of knees	Skin	F1	9/17/08	swab w/ sterile saline	whole-body	none
61	F13Nost	1343	nares	nostrils	Nostril	F1	9/17/08	swab w/ sterile saline	whole-body	none
62	F13Plml	1093	left palm	left palm	Skin	F1	9/17/08	swab w/ sterile saline	whole-body	none
63	F13Plmr	924	right palm	right palm	Skin	F1	9/17/08	swab w/ sterile saline	whole-body	none
64	F13Tong	2277	dorsal surface of tongue	tongue	Oral cavity	F1	9/17/08	swab	whole-body	none
65	F14Ewax	1143	external auditory canal	outer ear canal/earwax	EAC	F1	9/18/08	swab	whole-body	none
66	F14Fcsw	1884	stool	stool	Gut	F1	9/18/08	swab off used toilet paper	whole-body	none
67	F14Fotl	772	left plantar foot	left sole of foot	Skin	F1	9/18/08	swab w/ sterile saline	whole-body	none
68	F14Fotr	1966	right plantar foot	right sole of foot	Skin	F1	9/18/08	swab w/ sterile saline	whole-body	none
69	F14Frhd	1194	forehead	forehead	Skin	F1	9/18/08	swab w/ sterile saline	whole-body	none
70	F14Knee	1042	popliteal fossae	back of knees	Skin	F1	9/18/08	swab w/ sterile saline	whole-body	none
71	F14Nost	962	nares	nostrils	Nostril	F1	9/18/08	swab w/ sterile saline	whole-body	none
72	F14Plml	886	left palm	left palm	Skin	F1	9/18/08	swab w/ sterile saline	whole-body	none

Table S1. Sample information

#	SampleID	No. of reads	Sample site (anatomical)	Sample site (common)	Body habitat	Host sex, indiv	Day	Sample method	Study	Treatment
73	F14Plmr	1110	right palm	right palm	Skin	F1	9/18/08	swab w/ sterile saline	whole-body	none
74	F14Tong	1616	dorsal surface of tongue	tongue	Oral cavity	F1	9/18/08	swab	whole-body	none
75	F21Aptl	1855	left axilla	left armpit	Skin	F2	6/17/08	swab w/ sterile saline	whole-body	none
76	F21Aptr	1243	right axilla	right armpit	Skin	F2	6/17/08	swab w/ sterile saline	whole-body	none
77	F21Ewxl	1912	left external auditory canal	left outer ear canal/earwax	EAC	F2	6/17/08	swab	whole-body	none
78	F21Ewxr	1844	right external auditory canal	right outer ear canal/earwax	EAC	F2	6/17/08	swab	whole-body	none
79	F21Fcsp	965	stool	stool	Gut	F2	6/17/08	swab stabbed into stool	whole-body	none
80	F21Fcsw	1263	stool	stool	Gut	F2	6/17/08	swab off used toilet paper	whole-body	none
81	F21Forl	1089	left volar forearm	left forearm	Skin	F2	6/17/08	swab w/ sterile saline	whole-body	none
82	F21Forr	1627	right volar forearm	right forearm	Skin	F2	6/17/08	swab w/ sterile saline	whole-body	none
83	F21Fotl	1695	left plantar foot	left sole of foot	Skin	F2	6/17/08	swab w/ sterile saline	whole-body	none
84	F21Fotr	825	right plantar foot	right sole of foot	Skin	F2	6/17/08	swab w/ sterile saline	whole-body	none
85	F21Frhd	1924	forehead	forehead	Skin	F2	6/17/08	swab w/ sterile saline	whole-body	none
86	F21Hair	1271	hair on head	hair on head	Hair	F2	6/17/08	swab w/ sterile saline	whole-body	none
87	F21Indl	1235	left palmar index finger	left index finger	Skin	F2	6/17/08	swab w/ sterile saline	whole-body	none
88	F21Indr	937	right palmar index finger	right index finger	Skin	F2	6/17/08	swab w/ sterile saline	whole-body	none
89	F21Knel	1194	left popliteal fossa	left back of knees	Skin	F2	6/17/08	swab w/ sterile saline	whole-body	none
90	F21Kner	2036	right popliteal fossa	right back of knees	Skin	F2	6/17/08	swab w/ sterile saline	whole-body	none
91	F21Labi	1709	labia minora	labia minora	Skin	F2	6/17/08	swab w/ sterile saline	whole-body	none
92	F21Mout	1847	oral cavity	mouth	Oral cavity	F2	6/17/08	rinse w/ sterile water	whole-body	none
93	F21Navl	1904	umbilicus	navel	Skin	F2	6/17/08	swab w/ sterile saline	whole-body	none
94	F21Nose	1754	external nose	external nose	Skin	F2	6/17/08	swab w/ sterile saline	whole-body	none
95	F21Nstl	1418	left naris	left nostril	Nostril	F2	6/17/08	swab w/ sterile saline	whole-body	none
96	F21Nstr	1157	right naris	right nostril	Nostril	F2	6/17/08	swab w/ sterile saline	whole-body	none
97	F21Pinr	1333	right lateral pinna	right outer ear	Skin	F2	6/17/08	swab w/ sterile saline	whole-body	none
98	F21Plml	1534	left palm	left palm	Skin	F2	6/17/08	swab w/ sterile saline	whole-body	none
99	F21Plmr	1514	right palm	right palm	Skin	F2	6/17/08	swab w/ sterile saline	whole-body	none
100	F21Tong	1599	dorsal surface of tongue	tongue	Oral cavity	F2	6/17/08	swab	whole-body	none
101	F22Aptl	898	left axilla	left armpit	Skin	F2	6/18/08	swab w/ sterile saline	whole-body	none
102	F22Aptr	1457	right axilla	right armpit	Skin	F2	6/18/08	swab w/ sterile saline	whole-body	none
103	F22Ewxl	1987	left external auditory canal	left outer ear canal/earwax	EAC	F2	6/18/08	swab	whole-body	none
104	F22Ewxr	1682	right external auditory canal	right outer ear canal/earwax	EAC	F2	6/18/08	swab	whole-body	none
105	F22Fcsp	1500	stool	stool	Gut	F2	6/18/08	swab stabbed into stool	whole-body	none
106	F22Fcsw	1398	stool	stool	Gut	F2	6/18/08	swab off used toilet paper	whole-body	none
107	F22Forl	1079	left volar forearm	left forearm	Skin	F2	6/18/08	swab w/ sterile saline	whole-body	none
108	F22Forr	790	right volar forearm	right forearm	Skin	F2	6/18/08	swab w/ sterile saline	whole-body	none

Table S1. Sample information

#	SampleID	No. of reads	Sample site (anatomical)	Sample site (common)	Body habitat	Host sex, indiv	Day	Sample method	Study	Treatment
109	F22Fotl	1486	left plantar foot	left sole of foot	Skin	F2	6/18/08	swab w/ sterile saline	whole-body	none
110	F22Fotr	1291	right plantar foot	right sole of foot	Skin	F2	6/18/08	swab w/ sterile saline	whole-body	none
111	F22Frhd	1605	forehead	forehead	Skin	F2	6/18/08	swab w/ sterile saline	whole-body	none
112	F22Hair	1648	hair on head	hair on head	Hair	F2	6/18/08	swab w/ sterile saline	whole-body	none
113	F22Indl	1371	left palmar index finger	left index finger	Skin	F2	6/18/08	swab w/ sterile saline	whole-body	none
114	F22Indr	1635	right palmar index finger	right index finger	Skin	F2	6/18/08	swab w/ sterile saline	whole-body	none
115	F22Knel	1576	left popliteal fossa	left back of knees	Skin	F2	6/18/08	swab w/ sterile saline	whole-body	none
116	F22Kner	1031	right popliteal fossa	right back of knees	Skin	F2	6/18/08	swab w/ sterile saline	whole-body	none
117	F22Labi	1641	labia minora	labia minora	Skin	F2	6/18/08	swab w/ sterile saline	whole-body	none
118	F22Mout	2623	oral cavity	mouth	Oral cavity	F2	6/18/08	rinse w/ sterile water	whole-body	none
119	F22Navl	914	umbilicus	navel	Skin	F2	6/18/08	swab w/ sterile saline	whole-body	none
120	F22Nose	2020	external nose	external nose	Skin	F2	6/18/08	swab w/ sterile saline	whole-body	none
121	F22Nstl	1350	left naris	left nostril	Nostril	F2	6/18/08	swab w/ sterile saline	whole-body	none
122	F22Nstr	1450	right naris	right nostril	Nostril	F2	6/18/08	swab w/ sterile saline	whole-body	none
123	F22Pinl	1284	left lateral pinna	left outer ear	Skin	F2	6/18/08	swab w/ sterile saline	whole-body	none
124	F22Pinr	1787	right lateral pinna	right outer ear	Skin	F2	6/18/08	swab w/ sterile saline	whole-body	none
125	F22Plml	1784	left palm	left palm	Skin	F2	6/18/08	swab w/ sterile saline	whole-body	none
126	F22Plmr	1609	right palm	right palm	Skin	F2	6/18/08	swab w/ sterile saline	whole-body	none
127	F22Tong	2460	dorsal surface of tongue	tongue	Oral cavity	F2	6/18/08	swab	whole-body	none
128	F23Ewax	1249	external auditory canal	outer ear canal/earwax	EAC	F2	9/17/08	swab	whole-body	none
129	F23Fcsw	1421	stool	stool	Gut	F2	9/17/08	swab off used toilet paper	whole-body	none
130	F23Fotl	1123	left plantar foot	left sole of foot	Skin	F2	9/17/08	swab w/ sterile saline	whole-body	none
131	F23Fotr	1119	right plantar foot	right sole of foot	Skin	F2	9/17/08	swab w/ sterile saline	whole-body	none
132	F23Frhd	1799	forehead	forehead	Skin	F2	9/17/08	swab w/ sterile saline	whole-body	none
133	F23Knee	1073	popliteal fossae	back of knees	Skin	F2	9/17/08	swab w/ sterile saline	whole-body	none
134	F23Nost	1401	nares	nostrils	Nostril	F2	9/17/08	swab w/ sterile saline	whole-body	none
135	F23Plml	1135	left palm	left palm	Skin	F2	9/17/08	swab w/ sterile saline	whole-body	none
136	F23Plmr	1147	right palm	right palm	Skin	F2	9/17/08	swab w/ sterile saline	whole-body	none
137	F23Tong	2194	dorsal surface of tongue	tongue	Oral cavity	F2	9/17/08	swab	whole-body	none
138	F24Ewax	1305	external auditory canal	outer ear canal/earwax	EAC	F2	9/18/08	swab	whole-body	none
139	F24Fcsw	1707	stool	stool	Gut	F2	9/18/08	swab off used toilet paper	whole-body	none
140	F24Fotl	1394	left plantar foot	left sole of foot	Skin	F2	9/18/08	swab w/ sterile saline	whole-body	none
141	F24Fotr	1147	right plantar foot	right sole of foot	Skin	F2	9/18/08	swab w/ sterile saline	whole-body	none
142	F24Frhd	1409	forehead	forehead	Skin	F2	9/18/08	swab w/ sterile saline	whole-body	none
143	F24Knee	1035	popliteal fossae	back of knees	Skin	F2	9/18/08	swab w/ sterile saline	whole-body	none
144	F24Nost	1286	nares	nostrils	Nostril	F2	9/18/08	swab w/ sterile saline	whole-body	none

Table S1. Sample information

#	SampleID	No. of reads	Sample site (anatomical)	Sample site (common)	Body habitat	Host sex, indiv	Day	Sample method	Study	Treatment
145	F24Plml	1112	left palm	left palm	Skin	F2	9/18/08	swab w/ sterile saline	whole-body	none
146	F24Plmr	1159	right palm	right palm	Skin	F2	9/18/08	swab w/ sterile saline	whole-body	none
147	F24Tong	1735	dorsal surface of tongue	tongue	Oral cavity	F2	9/18/08	swab	whole-body	none
148	F31Aptl	819	left axilla	left armpit	Skin	F3	6/17/08	swab w/ sterile saline	whole-body	none
149	F31Aptr	714	right axilla	right armpit	Skin	F3	6/17/08	swab w/ sterile saline	whole-body	none
150	F31Ewxr	1566	right external auditory canal	right outer ear canal/earwax	EAC	F3	6/17/08	swab	whole-body	none
151	F31Fcsp	1048	stool	stool	Gut	F3	6/17/08	swab stabbed into stool	whole-body	none
152	F31Fcsw	1832	stool	stool	Gut	F3	6/17/08	swab off used toilet paper	whole-body	none
153	F31Forl	1613	left volar forearm	left forearm	Skin	F3	6/17/08	swab w/ sterile saline	whole-body	none
154	F31Forr	1952	right volar forearm	right forearm	Skin	F3	6/17/08	swab w/ sterile saline	whole-body	none
155	F31Fotl	2205	left plantar foot	left sole of foot	Skin	F3	6/17/08	swab w/ sterile saline	whole-body	none
156	F31Fotr	1258	right plantar foot	right sole of foot	Skin	F3	6/17/08	swab w/ sterile saline	whole-body	none
157	F31Frhd	1253	forehead	forehead	Skin	F3	6/17/08	swab w/ sterile saline	whole-body	none
158	F31Hair	704	hair on head	hair on head	Hair	F3	6/17/08	swab w/ sterile saline	whole-body	none
159	F31Indl	1196	left palmar index finger	left index finger	Skin	F3	6/17/08	swab w/ sterile saline	whole-body	none
160	F31Indr	1055	right palmar index finger	right index finger	Skin	F3	6/17/08	swab w/ sterile saline	whole-body	none
161	F31Knel	1158	left popliteal fossa	left back of knees	Skin	F3	6/17/08	swab w/ sterile saline	whole-body	none
162	F31Kner	815	right popliteal fossa	right back of knees	Skin	F3	6/17/08	swab w/ sterile saline	whole-body	none
163	F31Labi	2427	labia minora	labia minora	Skin	F3	6/17/08	swab w/ sterile saline	whole-body	none
164	F31Mout	1368	oral cavity	mouth	Oral cavity	F3	6/17/08	rinse w/ sterile water	whole-body	none
165	F31Nose	1327	external nose	external nose	Skin	F3	6/17/08	swab w/ sterile saline	whole-body	none
166	F31Nstl	624	left naris	left nostril	Nostril	F3	6/17/08	swab w/ sterile saline	whole-body	none
167	F31Nstr	969	right naris	right nostril	Nostril	F3	6/17/08	swab w/ sterile saline	whole-body	none
168	F31Pinl	819	left lateral pinna	left outer ear	Skin	F3	6/17/08	swab w/ sterile saline	whole-body	none
169	F31Pinr	763	right lateral pinna	right outer ear	Skin	F3	6/17/08	swab w/ sterile saline	whole-body	none
170	F31Plml	668	left palm	left palm	Skin	F3	6/17/08	swab w/ sterile saline	whole-body	none
171	F31Plmr	1821	right palm	right palm	Skin	F3	6/17/08	swab w/ sterile saline	whole-body	none
172	F31Tong	2013	dorsal surface of tongue	tongue	Oral cavity	F3	6/17/08	swab	whole-body	none
173	F32Aptl	813	left axilla	left armpit	Skin	F3	6/18/08	swab w/ sterile saline	whole-body	none
174	F32Aptr	1295	right axilla	right armpit	Skin	F3	6/18/08	swab w/ sterile saline	whole-body	none
175	F32Ewxl	925	left external auditory canal	left outer ear canal/earwax	EAC	F3	6/18/08	swab	whole-body	none
176	F32Ewxr	1204	right external auditory canal	right outer ear canal/earwax	EAC	F3	6/18/08	swab	whole-body	none
177	F32Fcsp	2163	stool	stool	Gut	F3	6/18/08	swab stabbed into stool	whole-body	none
178	F32Fcsw	1914	stool	stool	Gut	F3	6/18/08	swab off used toilet paper	whole-body	none
179	F32Forl	1390	left volar forearm	left forearm	Skin	F3	6/18/08	swab w/ sterile saline	whole-body	none
180	F32Forr	1229	right volar forearm	right forearm	Skin	F3	6/18/08	swab w/ sterile saline	whole-body	none

Table S1. Sample information

#	SampleID	No. of reads	Sample site (anatomical)	Sample site (common)	Body habitat	Host sex, indiv	Day	Sample method	Study	Treatment
181	F32Fotl	1182	left plantar foot	left sole of foot	Skin	F3	6/18/08	swab w/ sterile saline	whole-body	none
182	F32Fotr	1460	right plantar foot	right sole of foot	Skin	F3	6/18/08	swab w/ sterile saline	whole-body	none
183	F32Frhd	2397	forehead	forehead	Skin	F3	6/18/08	swab w/ sterile saline	whole-body	none
184	F32Hair	1197	hair on head	hair on head	Hair	F3	6/18/08	swab w/ sterile saline	whole-body	none
185	F32Indl	1212	left palmar index finger	left index finger	Skin	F3	6/18/08	swab w/ sterile saline	whole-body	none
186	F32Indr	2632	right palmar index finger	right index finger	Skin	F3	6/18/08	swab w/ sterile saline	whole-body	none
187	F32Knel	627	left popliteal fossa	left back of knees	Skin	F3	6/18/08	swab w/ sterile saline	whole-body	none
188	F32Kner	1338	right popliteal fossa	right back of knees	Skin	F3	6/18/08	swab w/ sterile saline	whole-body	none
189	F32Labi	1590	labia minora	labia minora	Skin	F3	6/18/08	swab w/ sterile saline	whole-body	none
190	F32Mout	1699	oral cavity	mouth	Oral cavity	F3	6/18/08	rinse w/ sterile water	whole-body	none
191	F32Navl	1119	umbilicus	navel	Skin	F3	6/18/08	swab w/ sterile saline	whole-body	none
192	F32Nose	2341	external nose	external nose	Skin	F3	6/18/08	swab w/ sterile saline	whole-body	none
193	F32Nstl	1669	left naris	left nostril	Nostril	F3	6/18/08	swab w/ sterile saline	whole-body	none
194	F32Nstr	2305	right naris	right nostril	Nostril	F3	6/18/08	swab w/ sterile saline	whole-body	none
195	F32Pinl	918	left lateral pinna	left outer ear	Skin	F3	6/18/08	swab w/ sterile saline	whole-body	none
196	F32Pinr	848	right lateral pinna	right outer ear	Skin	F3	6/18/08	swab w/ sterile saline	whole-body	none
197	F32Plml	1695	left palm	left palm	Skin	F3	6/18/08	swab w/ sterile saline	whole-body	none
198	F32Plmr	1142	right palm	right palm	Skin	F3	6/18/08	swab w/ sterile saline	whole-body	none
199	F32Tong	1869	dorsal surface of tongue	tongue	Oral cavity	F3	6/18/08	swab	whole-body	none
200	F33Ewax	860	external auditory canal	outer ear canal/earwax	EAC	F3	9/17/08	swab	whole-body	none
201	F33Fcsw	1706	stool	stool	Gut	F3	9/17/08	swab off used toilet paper	whole-body	none
202	F33Fotl	1322	left plantar foot	left sole of foot	Skin	F3	9/17/08	swab w/ sterile saline	whole-body	none
203	F33Fotr	1303	right plantar foot	right sole of foot	Skin	F3	9/17/08	swab w/ sterile saline	whole-body	none
204	F33Frhd	1008	forehead	forehead	Skin	F3	9/17/08	swab w/ sterile saline	whole-body	none
205	F33Knee	1036	popliteal fossae	back of knees	Skin	F3	9/17/08	swab w/ sterile saline	whole-body	none
206	F33Nost	985	nares	nostrils	Nostril	F3	9/17/08	swab w/ sterile saline	whole-body	none
207	F33Plml	1159	left palm	left palm	Skin	F3	9/17/08	swab w/ sterile saline	whole-body	none
208	F33Plmr	1406	right palm	right palm	Skin	F3	9/17/08	swab w/ sterile saline	whole-body	none
209	F33Tong	2236	dorsal surface of tongue	tongue	Oral cavity	F3	9/17/08	swab	whole-body	none
210	F34Ewax	768	external auditory canal	outer ear canal/earwax	EAC	F3	9/18/08	swab	whole-body	none
211	F34Fcsw	1917	stool	stool	Gut	F3	9/18/08	swab off used toilet paper	whole-body	none
212	F34Fotl	1501	left plantar foot	left sole of foot	Skin	F3	9/18/08	swab w/ sterile saline	whole-body	none
213	F34Fotr	1200	right plantar foot	right sole of foot	Skin	F3	9/18/08	swab w/ sterile saline	whole-body	none
214	F34Frhd	1133	forehead	forehead	Skin	F3	9/18/08	swab w/ sterile saline	whole-body	none
215	F34Knee	945	popliteal fossae	back of knees	Skin	F3	9/18/08	swab w/ sterile saline	whole-body	none
216	F34Nost	1152	nares	nostrils	Nostril	F3	9/18/08	swab w/ sterile saline	whole-body	none

Table S1. Sample information

#	SampleID	No. of reads	Sample site (anatomical)	Sample site (common)	Body habitat	Host sex, indiv	Day	Sample method	Study	Treatment
217	F34Plml	945	left palm	left palm	Skin	F3	9/18/08	swab w/ sterile saline	whole-body	none
218	F34Plmr	1055	right palm	right palm	Skin	F3	9/18/08	swab w/ sterile saline	whole-body	none
219	F34Tong	1864	dorsal surface of tongue	tongue	Oral cavity	F3	9/18/08	swab	whole-body	none
220	M11Aptl	822	left axilla	left armpit	Skin	M1	6/17/08	swab w/ sterile saline	whole-body	none
221	M11Apr	755	right axilla	right armpit	Skin	M1	6/17/08	swab w/ sterile saline	whole-body	none
222	M11Ewxl	1247	left external auditory canal	left outer ear canal/earwax	EAC	M1	6/17/08	swab	whole-body	none
223	M11Fcsp	1398	stool	stool	Gut	M1	6/17/08	swab stabbed into stool	whole-body	none
224	M11Fcsw	899	stool	stool	Gut	M1	6/17/08	swab off used toilet paper	whole-body	none
225	M11Forl	847	left volar forearm	left forearm	Skin	M1	6/17/08	swab w/ sterile saline	whole-body	none
226	M11Forr	566	right volar forearm	right forearm	Skin	M1	6/17/08	swab w/ sterile saline	whole-body	none
227	M11Fotl	1119	left plantar foot	left sole of foot	Skin	M1	6/17/08	swab w/ sterile saline	whole-body	none
228	M11Fotr	1000	right plantar foot	right sole of foot	Skin	M1	6/17/08	swab w/ sterile saline	whole-body	none
229	M11Frhd	797	forehead	forehead	Skin	M1	6/17/08	swab w/ sterile saline	whole-body	none
230	M11Glms	1045	glans penis	glans penis	Skin	M1	6/17/08	swab w/ sterile saline	whole-body	none
231	M11Hair	910	hair on head	hair on head	Hair	M1	6/17/08	swab w/ sterile saline	whole-body	none
232	M11Indl	805	left palmar index finger	left index finger	Skin	M1	6/17/08	swab w/ sterile saline	whole-body	none
233	M11Indr	607	right palmar index finger	right index finger	Skin	M1	6/17/08	swab w/ sterile saline	whole-body	none
234	M11Knel	864	left popliteal fossa	left back of knees	Skin	M1	6/17/08	swab w/ sterile saline	whole-body	none
235	M11Kner	950	right popliteal fossa	right back of knees	Skin	M1	6/17/08	swab w/ sterile saline	whole-body	none
236	M11Mout	1007	oral cavity	mouth	Oral cavity	M1	6/17/08	rinse w/ sterile water	whole-body	none
237	M11Navl	661	umbilicus	navel	Skin	M1	6/17/08	swab w/ sterile saline	whole-body	none
238	M11Nose	799	external nose	external nose	Skin	M1	6/17/08	swab w/ sterile saline	whole-body	none
239	M11Nstl	820	left naris	left nostril	Nostril	M1	6/17/08	swab w/ sterile saline	whole-body	none
240	M11Nstr	604	right naris	right nostril	Nostril	M1	6/17/08	swab w/ sterile saline	whole-body	none
241	M11Pinl	784	left lateral pinna	left outer ear	Skin	M1	6/17/08	swab w/ sterile saline	whole-body	none
242	M11Pinr	819	right lateral pinna	right outer ear	Skin	M1	6/17/08	swab w/ sterile saline	whole-body	none
243	M11Plml	813	left palm	left palm	Skin	M1	6/17/08	swab w/ sterile saline	whole-body	none
244	M11Plmr	700	right palm	right palm	Skin	M1	6/17/08	swab w/ sterile saline	whole-body	none
245	M11Tong	1282	dorsal surface of tongue	tongue	Oral cavity	M1	6/17/08	swab	whole-body	none
246	M12Aptl	1116	left axilla	left armpit	Skin	M1	6/18/08	swab w/ sterile saline	whole-body	none
247	M12Apr	923	right axilla	right armpit	Skin	M1	6/18/08	swab w/ sterile saline	whole-body	none
248	M12Ewxl	717	left external auditory canal	left outer ear canal/earwax	EAC	M1	6/18/08	swab	whole-body	none
249	M12Ewxr	1058	right external auditory canal	right outer ear canal/earwax	EAC	M1	6/18/08	swab	whole-body	none
250	M12Fcsp	877	stool	stool	Gut	M1	6/18/08	swab stabbed into stool	whole-body	none
251	M12Fcsw	746	stool	stool	Gut	M1	6/18/08	swab off used toilet paper	whole-body	none
252	M12Forl	855	left volar forearm	left forearm	Skin	M1	6/18/08	swab w/ sterile saline	whole-body	none

Table S1. Sample information

#	SampleID	No. of reads	Sample site (anatomical)	Sample site (common)	Body habitat	Host sex, indiv	Day	Sample method	Study	Treatment
253	M12Forr	912	right volar forearm	right forearm	Skin	M1	6/18/08	swab w/ sterile saline	whole-body	none
254	M12Fotl	1167	left plantar foot	left sole of foot	Skin	M1	6/18/08	swab w/ sterile saline	whole-body	none
255	M12Fotr	820	right plantar foot	right sole of foot	Skin	M1	6/18/08	swab w/ sterile saline	whole-body	none
256	M12Frhd	1066	forehead	forehead	Skin	M1	6/18/08	swab w/ sterile saline	whole-body	none
257	M12Glns	965	glans penis	glans penis	Skin	M1	6/18/08	swab w/ sterile saline	whole-body	none
258	M12Hair	827	hair on head	hair on head	Hair	M1	6/18/08	swab w/ sterile saline	whole-body	none
259	M12Indl	765	left palmar index finger	left index finger	Skin	M1	6/18/08	swab w/ sterile saline	whole-body	none
260	M12Indr	787	right palmar index finger	right index finger	Skin	M1	6/18/08	swab w/ sterile saline	whole-body	none
261	M12Knel	727	left popliteal fossa	left back of knees	Skin	M1	6/18/08	swab w/ sterile saline	whole-body	none
262	M12Kner	580	right popliteal fossa	right back of knees	Skin	M1	6/18/08	swab w/ sterile saline	whole-body	none
263	M12Mout	957	oral cavity	mouth	Oral cavity	M1	6/18/08	rinse w/ sterile water	whole-body	none
264	M12Navl	865	umbilicus	navel	Skin	M1	6/18/08	swab w/ sterile saline	whole-body	none
265	M12Nose	1118	external nose	external nose	Skin	M1	6/18/08	swab w/ sterile saline	whole-body	none
266	M12Nstl	930	left naris	left nostril	Nostril	M1	6/18/08	swab w/ sterile saline	whole-body	none
267	M12Nstr	1086	right naris	right nostril	Nostril	M1	6/18/08	swab w/ sterile saline	whole-body	none
268	M12Pinl	842	left lateral pinna	left outer ear	Skin	M1	6/18/08	swab w/ sterile saline	whole-body	none
269	M12Pinr	989	right lateral pinna	right outer ear	Skin	M1	6/18/08	swab w/ sterile saline	whole-body	none
270	M12Plml	855	left palm	left palm	Skin	M1	6/18/08	swab w/ sterile saline	whole-body	none
271	M12Plmr	951	right palm	right palm	Skin	M1	6/18/08	swab w/ sterile saline	whole-body	none
272	M12Tong	1301	dorsal surface of tongue	tongue	Oral cavity	M1	6/18/08	swab	whole-body	none
273	M13Ewax	1192	external auditory canal	outer ear canal/earwax	EAC	M1	9/17/08	swab	whole-body	none
274	M13Fcsw	1773	stool	stool	Gut	M1	9/17/08	swab off used toilet paper	whole-body	none
275	M13Fotl	830	left plantar foot	left sole of foot	Skin	M1	9/17/08	swab w/ sterile saline	whole-body	none
276	M13Fotr	953	right plantar foot	right sole of foot	Skin	M1	9/17/08	swab w/ sterile saline	whole-body	none
277	M13Frhd	1607	forehead	forehead	Skin	M1	9/17/08	swab w/ sterile saline	whole-body	none
278	M13Knee	1191	popliteal fossae	back of knees	Skin	M1	9/17/08	swab w/ sterile saline	whole-body	none
279	M13Nost	1389	nares	nostrils	Nostril	M1	9/17/08	swab w/ sterile saline	whole-body	none
280	M13Plml	1266	left palm	left palm	Skin	M1	9/17/08	swab w/ sterile saline	whole-body	none
281	M13Plmr	997	right palm	right palm	Skin	M1	9/17/08	swab w/ sterile saline	whole-body	none
282	M13Tong	1975	dorsal surface of tongue	tongue	Oral cavity	M1	9/17/08	swab	whole-body	none
283	M14Ewax	1811	external auditory canal	outer ear canal/earwax	EAC	M1	9/18/08	swab	whole-body	none
284	M14Fcsw	1640	stool	stool	Gut	M1	9/18/08	swab off used toilet paper	whole-body	none
285	M14Fotl	1163	left plantar foot	left sole of foot	Skin	M1	9/18/08	swab w/ sterile saline	whole-body	none
286	M14Fotr	1092	right plantar foot	right sole of foot	Skin	M1	9/18/08	swab w/ sterile saline	whole-body	none
287	M14Frhd	1302	forehead	forehead	Skin	M1	9/18/08	swab w/ sterile saline	whole-body	none
288	M14Knee	1283	popliteal fossae	back of knees	Skin	M1	9/18/08	swab w/ sterile saline	whole-body	none

Table S1. Sample information

#	SampleID	No. of reads	Sample site (anatomical)	Sample site (common)	Body habitat	Host sex, indiv	Day	Sample method	Study	Treatment
289	M14Nost	1156	nares	nostrils	Nostril	M1	9/18/08	swab w/ sterile saline	whole-body	none
290	M14Plml	1723	left palm	left palm	Skin	M1	9/18/08	swab w/ sterile saline	whole-body	none
291	M14Plmr	1052	right palm	right palm	Skin	M1	9/18/08	swab w/ sterile saline	whole-body	none
292	M14Tong	2490	dorsal surface of tongue	tongue	Oral cavity	M1	9/18/08	swab	whole-body	none
293	M21Aptl	721	left axilla	left armpit	Skin	M2	6/17/08	swab w/ sterile saline	whole-body	none
294	M21Apr	1346	right axilla	right armpit	Skin	M2	6/17/08	swab w/ sterile saline	whole-body	none
295	M21Ewxl	1802	left external auditory canal	left outer ear canal/earwax	EAC	M2	6/17/08	swab	whole-body	none
296	M21Ewxr	1985	right external auditory canal	right outer ear canal/earwax	EAC	M2	6/17/08	swab	whole-body	none
297	M21Fcsp	2087	stool	stool	Gut	M2	6/17/08	swab stabbed into stool	whole-body	none
298	M21Fcsw	1683	stool	stool	Gut	M2	6/17/08	swab off used toilet paper	whole-body	none
299	M21Forl	1701	left volar forearm	left forearm	Skin	M2	6/17/08	swab w/ sterile saline	whole-body	none
300	M21Forr	1139	right volar forearm	right forearm	Skin	M2	6/17/08	swab w/ sterile saline	whole-body	none
301	M21Fotl	2889	left plantar foot	left sole of foot	Skin	M2	6/17/08	swab w/ sterile saline	whole-body	none
302	M21Fotr	1185	right plantar foot	right sole of foot	Skin	M2	6/17/08	swab w/ sterile saline	whole-body	none
303	M21Frhd	1697	forehead	forehead	Skin	M2	6/17/08	swab w/ sterile saline	whole-body	none
304	M21Glms	1724	glans penis	glans penis	Skin	M2	6/17/08	swab w/ sterile saline	whole-body	none
305	M21Hair	996	hair on head	hair on head	Hair	M2	6/17/08	swab w/ sterile saline	whole-body	none
306	M21Indl	2061	left palmar index finger	left index finger	Skin	M2	6/17/08	swab w/ sterile saline	whole-body	none
307	M21Indr	1919	right palmar index finger	right index finger	Skin	M2	6/17/08	swab w/ sterile saline	whole-body	none
308	M21Knel	1452	left popliteal fossa	left back of knees	Skin	M2	6/17/08	swab w/ sterile saline	whole-body	none
309	M21Kner	774	right popliteal fossa	right back of knees	Skin	M2	6/17/08	swab w/ sterile saline	whole-body	none
310	M21Mout	5563	oral cavity	mouth	Oral cavity	M2	6/17/08	rinse w/ sterile water	whole-body	none
311	M21Navl	1210	umbilicus	navel	Skin	M2	6/17/08	swab w/ sterile saline	whole-body	none
312	M21Nose	651	external nose	external nose	Skin	M2	6/17/08	swab w/ sterile saline	whole-body	none
313	M21Nstl	1889	left naris	left nostril	Nostril	M2	6/17/08	swab w/ sterile saline	whole-body	none
314	M21Nstr	1309	right naris	right nostril	Nostril	M2	6/17/08	swab w/ sterile saline	whole-body	none
315	M21Pinl	1808	left lateral pinna	left outer ear	Skin	M2	6/17/08	swab w/ sterile saline	whole-body	none
316	M21Pinr	3063	right lateral pinna	right outer ear	Skin	M2	6/17/08	swab w/ sterile saline	whole-body	none
317	M21Plml	2453	left palm	left palm	Skin	M2	6/17/08	swab w/ sterile saline	whole-body	none
318	M21Plmr	2097	right palm	right palm	Skin	M2	6/17/08	swab w/ sterile saline	whole-body	none
319	M21Tong	2481	dorsal surface of tongue	tongue	Oral cavity	M2	6/17/08	swab	whole-body	none
320	M22Aptl	478	left axilla	left armpit	Skin	M2	6/18/08	swab w/ sterile saline	whole-body	none
321	M22Apr	1644	right axilla	right armpit	Skin	M2	6/18/08	swab w/ sterile saline	whole-body	none
322	M22Ewxl	1482	left external auditory canal	left outer ear canal/earwax	EAC	M2	6/18/08	swab	whole-body	none
323	M22Ewxr	1628	right external auditory canal	right outer ear canal/earwax	EAC	M2	6/18/08	swab	whole-body	none
324	M22Fcsp	1700	stool	stool	Gut	M2	6/18/08	swab stabbed into stool	whole-body	none

Table S1. Sample information

#	SampleID	No. of reads	Sample site (anatomical)	Sample site (common)	Body habitat	Host sex, indiv	Day	Sample method	Study	Treatment
325	M22Fcsw	1512	stool	stool	Gut	M2	6/18/08	swab off used toilet paper	whole-body	none
326	M22Forl	1070	left volar forearm	left forearm	Skin	M2	6/18/08	swab w/ sterile saline	whole-body	none
327	M22Forr	1103	right volar forearm	right forearm	Skin	M2	6/18/08	swab w/ sterile saline	whole-body	none
328	M22Fotl	1497	left plantar foot	left sole of foot	Skin	M2	6/18/08	swab w/ sterile saline	whole-body	none
329	M22Fotr	1773	right plantar foot	right sole of foot	Skin	M2	6/18/08	swab w/ sterile saline	whole-body	none
330	M22Frhd	1170	forehead	forehead	Skin	M2	6/18/08	swab w/ sterile saline	whole-body	none
331	M22Glns	890	glans penis	glans penis	Skin	M2	6/18/08	swab w/ sterile saline	whole-body	none
332	M22Hair	1294	hair on head	hair on head	Hair	M2	6/18/08	swab w/ sterile saline	whole-body	none
333	M22lndl	1559	left palmar index finger	left index finger	Skin	M2	6/18/08	swab w/ sterile saline	whole-body	none
334	M22lndr	1463	right palmar index finger	right index finger	Skin	M2	6/18/08	swab w/ sterile saline	whole-body	none
335	M22Knel	429	left popliteal fossa	left back of knees	Skin	M2	6/18/08	swab w/ sterile saline	whole-body	none
336	M22Kner	533	right popliteal fossa	right back of knees	Skin	M2	6/18/08	swab w/ sterile saline	whole-body	none
337	M22Mout	3027	oral cavity	mouth	Oral cavity	M2	6/18/08	rinse w/ sterile water	whole-body	none
338	M22Navl	1136	umbilicus	navel	Skin	M2	6/18/08	swab w/ sterile saline	whole-body	none
339	M22Nose	2897	external nose	external nose	Skin	M2	6/18/08	swab w/ sterile saline	whole-body	none
340	M22Nstl	1405	left naris	left nostril	Nostril	M2	6/18/08	swab w/ sterile saline	whole-body	none
341	M22Nstr	1059	right naris	right nostril	Nostril	M2	6/18/08	swab w/ sterile saline	whole-body	none
342	M22Pinl	1697	left lateral pinna	left outer ear	Skin	M2	6/18/08	swab w/ sterile saline	whole-body	none
343	M22Pinr	1297	right lateral pinna	right outer ear	Skin	M2	6/18/08	swab w/ sterile saline	whole-body	none
344	M22Plml	1586	left palm	left palm	Skin	M2	6/18/08	swab w/ sterile saline	whole-body	none
345	M22Plmr	1155	right palm	right palm	Skin	M2	6/18/08	swab w/ sterile saline	whole-body	none
346	M22Tong	1740	dorsal surface of tongue	tongue	Oral cavity	M2	6/18/08	swab	whole-body	none
347	M23Ewax	1146	external auditory canal	outer ear canal/earwax	EAC	M2	9/17/08	swab	whole-body	none
348	M23Fcsw	1796	stool	stool	Gut	M2	9/17/08	swab off used toilet paper	whole-body	none
349	M23Fotl	1022	left plantar foot	left sole of foot	Skin	M2	9/17/08	swab w/ sterile saline	whole-body	none
350	M23Fotr	1158	right plantar foot	right sole of foot	Skin	M2	9/17/08	swab w/ sterile saline	whole-body	none
351	M23Frhd	1737	forehead	forehead	Skin	M2	9/17/08	swab w/ sterile saline	whole-body	none
352	M23Knee	1495	popliteal fossae	back of knees	Skin	M2	9/17/08	swab w/ sterile saline	whole-body	none
353	M23Nost	1298	nares	nostrils	Nostril	M2	9/17/08	swab w/ sterile saline	whole-body	none
354	M23Plml	1493	left palm	left palm	Skin	M2	9/17/08	swab w/ sterile saline	whole-body	none
355	M23Plmr	949	right palm	right palm	Skin	M2	9/17/08	swab w/ sterile saline	whole-body	none
356	M23Tong	2069	dorsal surface of tongue	tongue	Oral cavity	M2	9/17/08	swab	whole-body	none
357	M24Ewax	1207	external auditory canal	outer ear canal/earwax	EAC	M2	9/18/08	swab	whole-body	none
358	M24Fcsw	1483	stool	stool	Gut	M2	9/18/08	swab off used toilet paper	whole-body	none
359	M24Fotl	1190	left plantar foot	left sole of foot	Skin	M2	9/18/08	swab w/ sterile saline	whole-body	none
360	M24Fotr	861	right plantar foot	right sole of foot	Skin	M2	9/18/08	swab w/ sterile saline	whole-body	none

Table S1. Sample information

#	SampleID	No. of reads	Sample site (anatomical)	Sample site (common)	Body habitat	Host sex, indiv	Day	Sample method	Study	Treatment
361	M24Frhd	1126	forehead	forehead	Skin	M2	9/18/08	swab w/ sterile saline	whole-body	none
362	M24Knee	1161	popliteal fossae	back of knees	Skin	M2	9/18/08	swab w/ sterile saline	whole-body	none
363	M24Nost	1511	nares	nostrils	Nostril	M2	9/18/08	swab w/ sterile saline	whole-body	none
364	M24Plml	1014	left palm	left palm	Skin	M2	9/18/08	swab w/ sterile saline	whole-body	none
365	M24Plmr	1023	right palm	right palm	Skin	M2	9/18/08	swab w/ sterile saline	whole-body	none
366	M24Tong	714	dorsal surface of tongue	tongue	Oral cavity	M2	9/18/08	swab	whole-body	none
367	M31Aptl	1641	left axilla	left armpit	Skin	M3	6/17/08	swab w/ sterile saline	whole-body	none
368	M31Apr	1758	right axilla	right armpit	Skin	M3	6/17/08	swab w/ sterile saline	whole-body	none
369	M31Ewxl	1272	left external auditory canal	left outer ear canal/earwax	EAC	M3	6/17/08	swab	whole-body	none
370	M31Ewxr	1739	right external auditory canal	right outer ear canal/earwax	EAC	M3	6/17/08	swab	whole-body	none
371	M31Fcsp	582	stool	stool	Gut	M3	6/17/08	swab stabbed into stool	whole-body	none
372	M31Fcsw	1535	stool	stool	Gut	M3	6/17/08	swab off used toilet paper	whole-body	none
373	M31Forl	573	left volar forearm	left forearm	Skin	M3	6/17/08	swab w/ sterile saline	whole-body	none
374	M31Forr	518	right volar forearm	right forearm	Skin	M3	6/17/08	swab w/ sterile saline	whole-body	none
375	M31Fotl	627	left plantar foot	left sole of foot	Skin	M3	6/17/08	swab w/ sterile saline	whole-body	none
376	M31Fotr	1268	right plantar foot	right sole of foot	Skin	M3	6/17/08	swab w/ sterile saline	whole-body	none
377	M31Frhd	1752	forehead	forehead	Skin	M3	6/17/08	swab w/ sterile saline	whole-body	none
378	M31Glms	1157	glans penis	glans penis	Skin	M3	6/17/08	swab w/ sterile saline	whole-body	none
379	M31Hair	1655	hair on head	hair on head	Hair	M3	6/17/08	swab w/ sterile saline	whole-body	none
380	M31Indl	2120	left palmar index finger	left index finger	Skin	M3	6/17/08	swab w/ sterile saline	whole-body	none
381	M31Indr	2220	right palmar index finger	right index finger	Skin	M3	6/17/08	swab w/ sterile saline	whole-body	none
382	M31Knel	1120	left popliteal fossa	left back of knees	Skin	M3	6/17/08	swab w/ sterile saline	whole-body	none
383	M31Kner	913	right popliteal fossa	right back of knees	Skin	M3	6/17/08	swab w/ sterile saline	whole-body	none
384	M31Mout	1245	oral cavity	mouth	Oral cavity	M3	6/17/08	rinse w/ sterile water	whole-body	none
385	M31Navl	585	umbilicus	navel	Skin	M3	6/17/08	swab w/ sterile saline	whole-body	none
386	M31Nose	1626	external nose	external nose	Skin	M3	6/17/08	swab w/ sterile saline	whole-body	none
387	M31Nstl	785	left naris	left nostril	Nostril	M3	6/17/08	swab w/ sterile saline	whole-body	none
388	M31Nstr	1139	right naris	right nostril	Nostril	M3	6/17/08	swab w/ sterile saline	whole-body	none
389	M31Pinl	1216	left lateral pinna	left outer ear	Skin	M3	6/17/08	swab w/ sterile saline	whole-body	none
390	M31Pinr	1043	right lateral pinna	right outer ear	Skin	M3	6/17/08	swab w/ sterile saline	whole-body	none
391	M31Plml	1209	left palm	left palm	Skin	M3	6/17/08	swab w/ sterile saline	whole-body	none
392	M31Plmr	1722	right palm	right palm	Skin	M3	6/17/08	swab w/ sterile saline	whole-body	none
393	M31Tong	1872	dorsal surface of tongue	tongue	Oral cavity	M3	6/17/08	swab	whole-body	none
394	M32Aptl	1110	left axilla	left armpit	Skin	M3	6/18/08	swab w/ sterile saline	whole-body	none
395	M32Apr	1859	right axilla	right armpit	Skin	M3	6/18/08	swab w/ sterile saline	whole-body	none
396	M32Ewxl	1298	left external auditory canal	left outer ear canal/earwax	EAC	M3	6/18/08	swab	whole-body	none

Table S1. Sample information

#	SampleID	No. of reads	Sample site (anatomical)	Sample site (common)	Body habitat	Host sex, indiv	Day	Sample method	Study	Treatment
397	M32Ewxr	1222	right external auditory canal	right outer ear canal/earwax	EAC	M3	6/18/08	swab	whole-body	none
398	M32Fcsp	1396	stool	stool	Gut	M3	6/18/08	swab stabbed into stool	whole-body	none
399	M32Fcsw	1489	stool	stool	Gut	M3	6/18/08	swab off used toilet paper	whole-body	none
400	M32Forl	1061	left volar forearm	left forearm	Skin	M3	6/18/08	swab w/ sterile saline	whole-body	none
401	M32Forr	1584	right volar forearm	right forearm	Skin	M3	6/18/08	swab w/ sterile saline	whole-body	none
402	M32Fotl	873	left plantar foot	left sole of foot	Skin	M3	6/18/08	swab w/ sterile saline	whole-body	none
403	M32Fotr	1227	right plantar foot	right sole of foot	Skin	M3	6/18/08	swab w/ sterile saline	whole-body	none
404	M32Frhd	1247	forehead	forehead	Skin	M3	6/18/08	swab w/ sterile saline	whole-body	none
405	M32Glms	790	glans penis	glans penis	Skin	M3	6/18/08	swab w/ sterile saline	whole-body	none
406	M32Hair	1162	hair on head	hair on head	Hair	M3	6/18/08	swab w/ sterile saline	whole-body	none
407	M32Indl	1811	left palmar index finger	left index finger	Skin	M3	6/18/08	swab w/ sterile saline	whole-body	none
408	M32Indr	1086	right palmar index finger	right index finger	Skin	M3	6/18/08	swab w/ sterile saline	whole-body	none
409	M32Knel	565	left popliteal fossa	left back of knees	Skin	M3	6/18/08	swab w/ sterile saline	whole-body	none
410	M32Kner	601	right popliteal fossa	right back of knees	Skin	M3	6/18/08	swab w/ sterile saline	whole-body	none
411	M32Mout	1645	oral cavity	mouth	Oral cavity	M3	6/18/08	rinse w/ sterile water	whole-body	none
412	M32Nose	1633	external nose	external nose	Skin	M3	6/18/08	swab w/ sterile saline	whole-body	none
413	M32Nstl	1302	left naris	left nostril	Nostril	M3	6/18/08	swab w/ sterile saline	whole-body	none
414	M32Nstr	1512	right naris	right nostril	Nostril	M3	6/18/08	swab w/ sterile saline	whole-body	none
415	M32Pinl	1328	left lateral pinna	left outer ear	Skin	M3	6/18/08	swab w/ sterile saline	whole-body	none
416	M32Pinr	718	right lateral pinna	right outer ear	Skin	M3	6/18/08	swab w/ sterile saline	whole-body	none
417	M32Plml	1447	left palm	left palm	Skin	M3	6/18/08	swab w/ sterile saline	whole-body	none
418	M32Plmr	1279	right palm	right palm	Skin	M3	6/18/08	swab w/ sterile saline	whole-body	none
419	M32Tong	2099	dorsal surface of tongue	tongue	Oral cavity	M3	6/18/08	swab	whole-body	none
420	M33Ewax	1044	external auditory canal	outer ear canal/earwax	EAC	M3	9/17/08	swab	whole-body	none
421	M33Fcsw	1671	stool	stool	Gut	M3	9/17/08	swab off used toilet paper	whole-body	none
422	M33Fotl	852	left plantar foot	left sole of foot	Skin	M3	9/17/08	swab w/ sterile saline	whole-body	none
423	M33Fotr	798	right plantar foot	right sole of foot	Skin	M3	9/17/08	swab w/ sterile saline	whole-body	none
424	M33Frhd	989	forehead	forehead	Skin	M3	9/17/08	swab w/ sterile saline	whole-body	none
425	M33Knee	932	popliteal fossae	back of knees	Skin	M3	9/17/08	swab w/ sterile saline	whole-body	none
426	M33Nost	1041	nares	nostrils	Nostril	M3	9/17/08	swab w/ sterile saline	whole-body	none
427	M33Plml	1027	left palm	left palm	Skin	M3	9/17/08	swab w/ sterile saline	whole-body	none
428	M33Plmr	1013	right palm	right palm	Skin	M3	9/17/08	swab w/ sterile saline	whole-body	none
429	M33Tong	1679	dorsal surface of tongue	tongue	Oral cavity	M3	9/17/08	swab	whole-body	none
430	M34Ewax	1288	external auditory canal	outer ear canal/earwax	EAC	M3	9/18/08	swab	whole-body	none
431	M34Fotl	921	left plantar foot	left sole of foot	Skin	M3	9/18/08	swab w/ sterile saline	whole-body	none
432	M34Fotr	960	right plantar foot	right sole of foot	Skin	M3	9/18/08	swab w/ sterile saline	whole-body	none

Table S1. Sample information

#	SampleID	No. of reads	Sample site (anatomical)	Sample site (common)	Body habitat	Host sex, indiv	Day	Sample method	Study	Treatment
433	M34Frhd	1117	forehead	forehead	Skin	M3	9/18/08	swab w/ sterile saline	whole-body	none
434	M34Knee	820	popliteal fossae	back of knees	Skin	M3	9/18/08	swab w/ sterile saline	whole-body	none
435	M34Nost	1100	nares	nostrils	Nostril	M3	9/18/08	swab w/ sterile saline	whole-body	none
436	M34Plml	1191	left palm	left palm	Skin	M3	9/18/08	swab w/ sterile saline	whole-body	none
437	M34Plmr	1000	right palm	right palm	Skin	M3	9/18/08	swab w/ sterile saline	whole-body	none
438	M34Tong	2920	dorsal surface of tongue	tongue	Oral cavity	M3	9/18/08	swab	whole-body	none
439	M41Aptl	1840	left axilla	left armpit	Skin	M4	6/17/08	swab w/ sterile saline	whole-body	none
440	M41Apr	1831	right axilla	right armpit	Skin	M4	6/17/08	swab w/ sterile saline	whole-body	none
441	M41Ewxl	2562	left external auditory canal	left outer ear canal/earwax	EAC	M4	6/17/08	swab	whole-body	none
442	M41Ewxr	2781	right external auditory canal	right outer ear canal/earwax	EAC	M4	6/17/08	swab	whole-body	none
443	M41Fcsp	2086	stool	stool	Gut	M4	6/17/08	swab stabbed into stool	whole-body	none
444	M41Fcsw	2012	stool	stool	Gut	M4	6/17/08	swab off used toilet paper	whole-body	none
445	M41Forl	700	left volar forearm	left forearm	Skin	M4	6/17/08	swab w/ sterile saline	whole-body	none
446	M41Forr	1099	right volar forearm	right forearm	Skin	M4	6/17/08	swab w/ sterile saline	whole-body	none
447	M41Fotl	1971	left plantar foot	left sole of foot	Skin	M4	6/17/08	swab w/ sterile saline	whole-body	none
448	M41Fotr	1345	right plantar foot	right sole of foot	Skin	M4	6/17/08	swab w/ sterile saline	whole-body	none
449	M41Frhd	1380	forehead	forehead	Skin	M4	6/17/08	swab w/ sterile saline	whole-body	none
450	M41Glms	505	glans penis	glans penis	Skin	M4	6/17/08	swab w/ sterile saline	whole-body	none
451	M41Hair	893	hair on head	hair on head	Hair	M4	6/17/08	swab w/ sterile saline	whole-body	none
452	M41Indl	843	left palmar index finger	left index finger	Skin	M4	6/17/08	swab w/ sterile saline	whole-body	none
453	M41Indr	649	right palmar index finger	right index finger	Skin	M4	6/17/08	swab w/ sterile saline	whole-body	none
454	M41Knel	1689	left popliteal fossa	left back of knees	Skin	M4	6/17/08	swab w/ sterile saline	whole-body	none
455	M41Kner	1719	right popliteal fossa	right back of knees	Skin	M4	6/17/08	swab w/ sterile saline	whole-body	none
456	M41Mout	1052	oral cavity	mouth	Oral cavity	M4	6/17/08	rinse w/ sterile water	whole-body	none
457	M41Navl	1986	umbilicus	navel	Skin	M4	6/17/08	swab w/ sterile saline	whole-body	none
458	M41Nose	1076	external nose	external nose	Skin	M4	6/17/08	swab w/ sterile saline	whole-body	none
459	M41Nstl	1543	left naris	left nostril	Nostril	M4	6/17/08	swab w/ sterile saline	whole-body	none
460	M41Nstr	888	right naris	right nostril	Nostril	M4	6/17/08	swab w/ sterile saline	whole-body	none
461	M41Pinl	1210	left lateral pinna	left outer ear	Skin	M4	6/17/08	swab w/ sterile saline	whole-body	none
462	M41Pinr	1159	right lateral pinna	right outer ear	Skin	M4	6/17/08	swab w/ sterile saline	whole-body	none
463	M41Plml	1740	left palm	left palm	Skin	M4	6/17/08	swab w/ sterile saline	whole-body	none
464	M41Plmr	1195	right palm	right palm	Skin	M4	6/17/08	swab w/ sterile saline	whole-body	none
465	M41Tong	1855	dorsal surface of tongue	tongue	Oral cavity	M4	6/17/08	swab	whole-body	none
466	M42Aptl	1392	left axilla	left armpit	Skin	M4	6/18/08	swab w/ sterile saline	whole-body	none
467	M42Apr	1455	right axilla	right armpit	Skin	M4	6/18/08	swab w/ sterile saline	whole-body	none
468	M42Ewxl	1828	left external auditory canal	left outer ear canal/earwax	EAC	M4	6/18/08	swab	whole-body	none

Table S1. Sample information

#	SampleID	No. of reads	Sample site (anatomical)	Sample site (common)	Body habitat	Host sex, indiv	Day	Sample method	Study	Treatment
469	M42Ewxr	1152	right external auditory canal	right outer ear canal/earwax	EAC	M4	6/18/08	swab	whole-body	none
470	M42Fcsp	595	stool	stool	Gut	M4	6/18/08	swab stabbed into stool	whole-body	none
471	M42Fcsw	1863	stool	stool	Gut	M4	6/18/08	swab off used toilet paper	whole-body	none
472	M42Forl	1507	left volar forearm	left forearm	Skin	M4	6/18/08	swab w/ sterile saline	whole-body	none
473	M42Forr	828	right volar forearm	right forearm	Skin	M4	6/18/08	swab w/ sterile saline	whole-body	none
474	M42Fotl	2199	left plantar foot	left sole of foot	Skin	M4	6/18/08	swab w/ sterile saline	whole-body	none
475	M42Fotr	901	right plantar foot	right sole of foot	Skin	M4	6/18/08	swab w/ sterile saline	whole-body	none
476	M42Frhd	1936	forehead	forehead	Skin	M4	6/18/08	swab w/ sterile saline	whole-body	none
477	M42Glms	1299	glans penis	glans penis	Skin	M4	6/18/08	swab w/ sterile saline	whole-body	none
478	M42Hair	2107	hair on head	hair on head	Hair	M4	6/18/08	swab w/ sterile saline	whole-body	none
479	M42Indl	2138	left palmar index finger	left index finger	Skin	M4	6/18/08	swab w/ sterile saline	whole-body	none
480	M42Indr	1998	right palmar index finger	right index finger	Skin	M4	6/18/08	swab w/ sterile saline	whole-body	none
481	M42Knel	1786	left popliteal fossa	left back of knees	Skin	M4	6/18/08	swab w/ sterile saline	whole-body	none
482	M42Kner	1041	right popliteal fossa	right back of knees	Skin	M4	6/18/08	swab w/ sterile saline	whole-body	none
483	M42Mout	2484	oral cavity	mouth	Oral cavity	M4	6/18/08	rinse w/ sterile water	whole-body	none
484	M42Navl	570	umbilicus	navel	Skin	M4	6/18/08	swab w/ sterile saline	whole-body	none
485	M42Nose	1029	external nose	external nose	Skin	M4	6/18/08	swab w/ sterile saline	whole-body	none
486	M42Nstl	894	left naris	left nostril	Nostril	M4	6/18/08	swab w/ sterile saline	whole-body	none
487	M42Nstr	686	right naris	right nostril	Nostril	M4	6/18/08	swab w/ sterile saline	whole-body	none
488	M42Pinl	2109	left lateral pinna	left outer ear	Skin	M4	6/18/08	swab w/ sterile saline	whole-body	none
489	M42Pivr	1444	right lateral pinna	right outer ear	Skin	M4	6/18/08	swab w/ sterile saline	whole-body	none
490	M42Plml	1376	left palm	left palm	Skin	M4	6/18/08	swab w/ sterile saline	whole-body	none
491	M42Plmr	1185	right palm	right palm	Skin	M4	6/18/08	swab w/ sterile saline	whole-body	none
492	M42Tong	1498	dorsal surface of tongue	tongue	Oral cavity	M4	6/18/08	swab	whole-body	none
493	M43Ewax	1790	external auditory canal	outer ear canal/earwax	EAC	M4	9/17/08	swab	whole-body	none
494	M43Fcsw	1629	stool	stool	Gut	M4	9/17/08	swab off used toilet paper	whole-body	none
495	M43Fotl	1100	left plantar foot	left sole of foot	Skin	M4	9/17/08	swab w/ sterile saline	whole-body	none
496	M43Fotr	1050	right plantar foot	right sole of foot	Skin	M4	9/17/08	swab w/ sterile saline	whole-body	none
497	M43Frhd	1411	forehead	forehead	Skin	M4	9/17/08	swab w/ sterile saline	whole-body	none
498	M43Knee	1094	popliteal fossae	back of knees	Skin	M4	9/17/08	swab w/ sterile saline	whole-body	none
499	M43Nost	1314	nares	nostrils	Nostril	M4	9/17/08	swab w/ sterile saline	whole-body	none
500	M43Plml	1375	left palm	left palm	Skin	M4	9/17/08	swab w/ sterile saline	whole-body	none
501	M43Plmr	1239	right palm	right palm	Skin	M4	9/17/08	swab w/ sterile saline	whole-body	none
502	M43Tong	1634	dorsal surface of tongue	tongue	Oral cavity	M4	9/17/08	swab	whole-body	none
503	M44Ewax	1584	external auditory canal	outer ear canal/earwax	EAC	M4	9/18/08	swab	whole-body	none
504	M44Fcsw	1848	stool	stool	Gut	M4	9/18/08	swab off used toilet paper	whole-body	none

Table S1. Sample information

#	SampleID	No. of reads	Sample site (anatomical)	Sample site (common)	Body habitat	Host sex, indiv	Day	Sample method	Study	Treatment
505	M44Fotl	1023	left plantar foot	left sole of foot	Skin	M4	9/18/08	swab w/ sterile saline	whole-body	none
506	M44Fotr	979	right plantar foot	right sole of foot	Skin	M4	9/18/08	swab w/ sterile saline	whole-body	none
507	M44Frhd	1237	forehead	forehead	Skin	M4	9/18/08	swab w/ sterile saline	whole-body	none
508	M44Knee	1259	popliteal fossae	back of knees	Skin	M4	9/18/08	swab w/ sterile saline	whole-body	none
509	M44Nost	1173	nares	nostrils	Nostril	M4	9/18/08	swab w/ sterile saline	whole-body	none
510	M44Plml	1398	left palm	left palm	Skin	M4	9/18/08	swab w/ sterile saline	whole-body	none
511	M44Plmr	1324	right palm	right palm	Skin	M4	9/18/08	swab w/ sterile saline	whole-body	none
512	M44Tong	1842	dorsal surface of tongue	tongue	Oral cavity	M4	9/18/08	swab	whole-body	none
513	M53Ewax	1099	external auditory canal	outer ear canal/earwax	EAC	M5	9/17/08	swab	whole-body	none
514	M53Fcsw	1488	stool	stool	Gut	M5	9/17/08	swab off used toilet paper	whole-body	none
515	M53Fotl	1287	left plantar foot	left sole of foot	Skin	M5	9/17/08	swab w/ sterile saline	whole-body	none
516	M53Fotr	1251	right plantar foot	right sole of foot	Skin	M5	9/17/08	swab w/ sterile saline	whole-body	none
517	M53Frhd	1154	forehead	forehead	Skin	M5	9/17/08	swab w/ sterile saline	whole-body	none
518	M53Knee	1348	popliteal fossae	back of knees	Skin	M5	9/17/08	swab w/ sterile saline	whole-body	none
519	M53Nost	1656	nares	nostrils	Nostril	M5	9/17/08	swab w/ sterile saline	whole-body	none
520	M53Plml	1229	left palm	left palm	Skin	M5	9/17/08	swab w/ sterile saline	whole-body	none
521	M53Plmr	992	right palm	right palm	Skin	M5	9/17/08	swab w/ sterile saline	whole-body	none
522	M53Tong	1967	dorsal surface of tongue	tongue	Oral cavity	M5	9/17/08	swab	whole-body	none
523	M54Ewax	1014	external auditory canal	outer ear canal/earwax	EAC	M5	9/18/08	swab	whole-body	none
524	M54Fcsw	1588	stool	stool	Gut	M5	9/18/08	swab off used toilet paper	whole-body	none
525	M54Fotl	1068	left plantar foot	left sole of foot	Skin	M5	9/18/08	swab w/ sterile saline	whole-body	none
526	M54Fotr	1296	right plantar foot	right sole of foot	Skin	M5	9/18/08	swab w/ sterile saline	whole-body	none
527	M54Frhd	1201	forehead	forehead	Skin	M5	9/18/08	swab w/ sterile saline	whole-body	none
528	M54Knee	1211	popliteal fossae	back of knees	Skin	M5	9/18/08	swab w/ sterile saline	whole-body	none
529	M54Nost	1157	nares	nostrils	Nostril	M5	9/18/08	swab w/ sterile saline	whole-body	none
530	M54Plml	1181	left palm	left palm	Skin	M5	9/18/08	swab w/ sterile saline	whole-body	none
531	M54Plmr	1253	right palm	right palm	Skin	M5	9/18/08	swab w/ sterile saline	whole-body	none
532	M54Tong	1954	dorsal surface of tongue	tongue	Oral cavity	M5	9/18/08	swab	whole-body	none
533	M63Ewax	1094	external auditory canal	outer ear canal/earwax	EAC	M6	9/17/08	swab	whole-body	none
534	M63Fcsw	1581	stool	stool	Gut	M6	9/17/08	swab off used toilet paper	whole-body	none
535	M63Fotl	1030	left plantar foot	left sole of foot	Skin	M6	9/17/08	swab w/ sterile saline	whole-body	none
536	M63Fotr	968	right plantar foot	right sole of foot	Skin	M6	9/17/08	swab w/ sterile saline	whole-body	none
537	M63Frhd	1185	forehead	forehead	Skin	M6	9/17/08	swab w/ sterile saline	whole-body	none
538	M63Knee	946	popliteal fossae	back of knees	Skin	M6	9/17/08	swab w/ sterile saline	whole-body	none
539	M63Nost	1185	nares	nostrils	Nostril	M6	9/17/08	swab w/ sterile saline	whole-body	none
540	M63Plml	1056	left palm	left palm	Skin	M6	9/17/08	swab w/ sterile saline	whole-body	none

Table S1. Sample information

#	SampleID	No. of reads	Sample site (anatomical)	Sample site (common)	Body habitat	Host sex, indiv	Day	Sample method	Study	Treatment
541	M63PImr	1183	right palm	right palm	Skin	M6	9/17/08	swab w/ sterile saline	whole-body	none
542	M63Tong	1505	dorsal surface of tongue	tongue	Oral cavity	M6	9/17/08	swab	whole-body	none
543	M64Ewax	1173	external auditory canal	outer ear canal/earwax	EAC	M6	9/18/08	swab	whole-body	none
544	M64Fcsw	1664	stool	stool	Gut	M6	9/18/08	swab off used toilet paper	whole-body	none
545	M64Fotl	1396	left plantar foot	left sole of foot	Skin	M6	9/18/08	swab w/ sterile saline	whole-body	none
546	M64Fotr	1330	right plantar foot	right sole of foot	Skin	M6	9/18/08	swab w/ sterile saline	whole-body	none
547	M64Frhd	1130	forehead	forehead	Skin	M6	9/18/08	swab w/ sterile saline	whole-body	none
548	M64Knee	1240	popliteal fossae	back of knees	Skin	M6	9/18/08	swab w/ sterile saline	whole-body	none
549	M64Nost	1280	nares	nostrils	Nostril	M6	9/18/08	swab w/ sterile saline	whole-body	none
550	M64Plml	1324	left palm	left palm	Skin	M6	9/18/08	swab w/ sterile saline	whole-body	none
551	M64PImr	1356	right palm	right palm	Skin	M6	9/18/08	swab w/ sterile saline	whole-body	none
552	M64Tong	1953	dorsal surface of tongue	tongue	Oral cavity	M6	9/18/08	swab	whole-body	none
553	F210A1	1238	left volar forearm	forearm	Skin	F2	day 1	swab w/ sterile saline	transplant	none
554	F210A2	1202	left volar forearm	forearm	Skin	F2	day 1	swab w/ sterile saline	transplant	none
555	F210A3	1316	left volar forearm	forearm	Skin	F2	day 1	swab w/ sterile saline	transplant	none
556	F210A4	1216	left volar forearm	forearm	Skin	F2	day 1	swab w/ sterile saline	transplant	none
557	F210H5	1377	forehead	forehead	Skin	F2	day 1	swab w/ sterile saline	transplant	none
558	F210H6	1428	forehead	forehead	Skin	F2	day 1	swab w/ sterile saline	transplant	none
559	F210H7	1535	forehead	forehead	Skin	F2	day 1	swab w/ sterile saline	transplant	none
560	F210H8	1520	forehead	forehead	Skin	F2	day 1	swab w/ sterile saline	transplant	none
561	F210T	835	dorsal surface of tongue	tongue	Oral cavity	F2	day 1	swab	transplant	none
562	F212A1	1308	left volar forearm	forearm	Skin	F2	day 1	swab w/ sterile saline	transplant	disinfect./inoc. with forehead from self (2hrs)
563	F212A2	1350	left volar forearm	forearm	Skin	F2	day 1	swab w/ sterile saline	transplant	disinfect./inoc. with forehead from same-sex other (2hrs)
564	F212A3	1254	left volar forearm	forearm	Skin	F2	day 1	swab w/ sterile saline	transplant	disinfect./inoc. with tongue from self (2hrs)
565	F212A4	1240	left volar forearm	forearm	Skin	F2	day 1	swab w/ sterile saline	transplant	disinfect./inoc. with tongue from same-sex other (2hrs)
566	F212H5	1409	forehead	forehead	Skin	F2	day 1	swab w/ sterile saline	transplant	disinfect./inoc. with forearm from self (2hrs)
567	F212H6	1210	forehead	forehead	Skin	F2	day 1	swab w/ sterile saline	transplant	disinfect./inoc. with forearm from same-sex other (2hrs)
568	F212H7	1502	forehead	forehead	Skin	F2	day 1	swab w/ sterile saline	transplant	disinfect./inoc. with tongue from self (2hrs)
569	F212H8	1409	forehead	forehead	Skin	F2	day 1	swab w/ sterile saline	transplant	disinfect./inoc. with tongue from same-sex other (2hrs)
570	F214A1	1203	left volar forearm	forearm	Skin	F2	day 1	swab w/ sterile saline	transplant	disinfect./inoc. with forehead from self (4hrs)
571	F214A2	1216	left volar forearm	forearm	Skin	F2	day 1	swab w/ sterile saline	transplant	disinfect./inoc. with forehead from same-sex other (4hrs)
572	F214A3	1177	left volar forearm	forearm	Skin	F2	day 1	swab w/ sterile saline	transplant	disinfect./inoc. with tongue from self (4hrs)
573	F214A4	1246	left volar forearm	forearm	Skin	F2	day 1	swab w/ sterile saline	transplant	disinfect./inoc. with tongue from same-sex other (4hrs)
574	F214H5	1500	forehead	forehead	Skin	F2	day 1	swab w/ sterile saline	transplant	disinfect./inoc. with forearm from self (4hrs)
575	F214H6	1558	forehead	forehead	Skin	F2	day 1	swab w/ sterile saline	transplant	disinfect./inoc. with forearm from same-sex other (4hrs)
576	F214H7	1356	forehead	forehead	Skin	F2	day 1	swab w/ sterile saline	transplant	disinfect./inoc. with tongue from self (4hrs)

Table S1. Sample information

#	SampleID	No. of reads	Sample site (anatomical)	Sample site (common)	Body habitat	Host sex, indiv	Day	Sample method	Study	Treatment
577	F214H8	1410	forehead	forehead	Skin	F2	day 1	swab w/ sterile saline	transplant	disinfect./inoc. with tongue from same-sex other (4hrs)
578	F218A1	1234	left volar forearm	forearm	Skin	F2	day 1	swab w/ sterile saline	transplant	disinfect./inoc. with forehead from self (8hrs)
579	F218A2	1261	left volar forearm	forearm	Skin	F2	day 1	swab w/ sterile saline	transplant	disinfect./inoc. with forehead from same-sex other (8hrs)
580	F218A3	1233	left volar forearm	forearm	Skin	F2	day 1	swab w/ sterile saline	transplant	disinfect./inoc. with tongue from self (8hrs)
581	F218A4	1227	left volar forearm	forearm	Skin	F2	day 1	swab w/ sterile saline	transplant	disinfect./inoc. with tongue from same-sex other (8hrs)
582	F218H5	1514	forehead	forehead	Skin	F2	day 1	swab w/ sterile saline	transplant	disinfect./inoc. with forearm from self (8hrs)
583	F218H6	1443	forehead	forehead	Skin	F2	day 1	swab w/ sterile saline	transplant	disinfect./inoc. with forearm from same-sex other (8hrs)
584	F218H7	1493	forehead	forehead	Skin	F2	day 1	swab w/ sterile saline	transplant	disinfect./inoc. with tongue from self (8hrs)
585	F218H8	1648	forehead	forehead	Skin	F2	day 1	swab w/ sterile saline	transplant	disinfect./inoc. with tongue from same-sex other (8hrs)
586	F220A1	1353	left volar forearm	forearm	Skin	F2	day 2	swab w/ sterile saline	transplant	none
587	F220A2	1381	left volar forearm	forearm	Skin	F2	day 2	swab w/ sterile saline	transplant	none
588	F220A3	1261	left volar forearm	forearm	Skin	F2	day 2	swab w/ sterile saline	transplant	none
589	F220A4	1329	left volar forearm	forearm	Skin	F2	day 2	swab w/ sterile saline	transplant	none
590	F220H5	1395	forehead	forehead	Skin	F2	day 2	swab w/ sterile saline	transplant	none
591	F220H6	1478	forehead	forehead	Skin	F2	day 2	swab w/ sterile saline	transplant	none
592	F220H7	1461	forehead	forehead	Skin	F2	day 2	swab w/ sterile saline	transplant	none
593	F220H8	1549	forehead	forehead	Skin	F2	day 2	swab w/ sterile saline	transplant	none
594	F220T	723	dorsal surface of tongue	tongue	Oral cavity	F2	day 2	swab	transplant	none
595	F222A1	1342	left volar forearm	forearm	Skin	F2	day 2	swab w/ sterile saline	transplant	disinfect./inoc. with forehead from self (2hrs)
596	F222A2	1279	left volar forearm	forearm	Skin	F2	day 2	swab w/ sterile saline	transplant	disinfect./inoc. with forehead from same-sex other (2hrs)
597	F222A3	1183	left volar forearm	forearm	Skin	F2	day 2	swab w/ sterile saline	transplant	disinfect./inoc. with tongue from self (2hrs)
598	F222A4	1349	left volar forearm	forearm	Skin	F2	day 2	swab w/ sterile saline	transplant	disinfect./inoc. with tongue from same-sex other (2hrs)
599	F222H5	1361	forehead	forehead	Skin	F2	day 2	swab w/ sterile saline	transplant	disinfect./inoc. with forearm from self (2hrs)
600	F222H6	1384	forehead	forehead	Skin	F2	day 2	swab w/ sterile saline	transplant	disinfect./inoc. with forearm from same-sex other (2hrs)
601	F222H7	1289	forehead	forehead	Skin	F2	day 2	swab w/ sterile saline	transplant	disinfect./inoc. with tongue from self (2hrs)
602	F222H8	1384	forehead	forehead	Skin	F2	day 2	swab w/ sterile saline	transplant	disinfect./inoc. with tongue from same-sex other (2hrs)
603	F224A1	1323	left volar forearm	forearm	Skin	F2	day 2	swab w/ sterile saline	transplant	disinfect./inoc. with forehead from self (4hrs)
604	F224A2	1328	left volar forearm	forearm	Skin	F2	day 2	swab w/ sterile saline	transplant	disinfect./inoc. with forehead from same-sex other (4hrs)
605	F224A3	1074	left volar forearm	forearm	Skin	F2	day 2	swab w/ sterile saline	transplant	disinfect./inoc. with tongue from self (4hrs)
606	F224A4	1216	left volar forearm	forearm	Skin	F2	day 2	swab w/ sterile saline	transplant	disinfect./inoc. with tongue from same-sex other (4hrs)
607	F224H5	1502	forehead	forehead	Skin	F2	day 2	swab w/ sterile saline	transplant	disinfect./inoc. with forearm from self (4hrs)
608	F224H6	1307	forehead	forehead	Skin	F2	day 2	swab w/ sterile saline	transplant	disinfect./inoc. with forearm from same-sex other (4hrs)
609	F224H7	1427	forehead	forehead	Skin	F2	day 2	swab w/ sterile saline	transplant	disinfect./inoc. with tongue from self (4hrs)
610	F224H8	1291	forehead	forehead	Skin	F2	day 2	swab w/ sterile saline	transplant	disinfect./inoc. with tongue from same-sex other (4hrs)
611	F228A1	1347	left volar forearm	forearm	Skin	F2	day 2	swab w/ sterile saline	transplant	disinfect./inoc. with forehead from self (8hrs)
612	F228A2	1063	left volar forearm	forearm	Skin	F2	day 2	swab w/ sterile saline	transplant	disinfect./inoc. with forehead from same-sex other (8hrs)

Table S1. Sample information

#	SampleID	No. of reads	Sample site (anatomical)	Sample site (common)	Body habitat	Host sex, indiv	Day	Sample method	Study	Treatment
613	F228A3	1084	left volar forearm	forearm	Skin	F2	day 2	swab w/ sterile saline	transplant	disinfect./inoc. with tongue from self (8hrs)
614	F228A4	1296	left volar forearm	forearm	Skin	F2	day 2	swab w/ sterile saline	transplant	disinfect./inoc. with tongue from same-sex other (8hrs)
615	F228H5	1497	forehead	forehead	Skin	F2	day 2	swab w/ sterile saline	transplant	disinfect./inoc. with forearm from self (8hrs)
616	F228H6	1416	forehead	forehead	Skin	F2	day 2	swab w/ sterile saline	transplant	disinfect./inoc. with forearm from same-sex other (8hrs)
617	F228H7	1363	forehead	forehead	Skin	F2	day 2	swab w/ sterile saline	transplant	disinfect./inoc. with tongue from self (8hrs)
618	F228H8	1315	forehead	forehead	Skin	F2	day 2	swab w/ sterile saline	transplant	disinfect./inoc. with tongue from same-sex other (8hrs)
619	F310A1	1437	left volar forearm	forearm	Skin	F3	day 1	swab w/ sterile saline	transplant	none
620	F310A2	1344	left volar forearm	forearm	Skin	F3	day 1	swab w/ sterile saline	transplant	none
621	F310A3	1444	left volar forearm	forearm	Skin	F3	day 1	swab w/ sterile saline	transplant	none
622	F310A4	1381	left volar forearm	forearm	Skin	F3	day 1	swab w/ sterile saline	transplant	none
623	F310H5	1380	forehead	forehead	Skin	F3	day 1	swab w/ sterile saline	transplant	none
624	F310H6	875	forehead	forehead	Skin	F3	day 1	swab w/ sterile saline	transplant	none
625	F310H7	1543	forehead	forehead	Skin	F3	day 1	swab w/ sterile saline	transplant	none
626	F310H8	1472	forehead	forehead	Skin	F3	day 1	swab w/ sterile saline	transplant	none
627	F310T	751	dorsal surface of tongue	tongue	Oral cavity	F3	day 1	swab	transplant	none
628	F312A1	1103	left volar forearm	forearm	Skin	F3	day 1	swab w/ sterile saline	transplant	disinfect./inoc. with forehead from self (2hrs)
629	F312A2	1287	left volar forearm	forearm	Skin	F3	day 1	swab w/ sterile saline	transplant	disinfect./inoc. with forehead from same-sex other (2hrs)
630	F312A3	1257	left volar forearm	forearm	Skin	F3	day 1	swab w/ sterile saline	transplant	disinfect./inoc. with tongue from self (2hrs)
631	F312A4	1248	left volar forearm	forearm	Skin	F3	day 1	swab w/ sterile saline	transplant	disinfect./inoc. with tongue from same-sex other (2hrs)
632	F312H5	1340	forehead	forehead	Skin	F3	day 1	swab w/ sterile saline	transplant	disinfect./inoc. with forearm from self (2hrs)
633	F312H6	1403	forehead	forehead	Skin	F3	day 1	swab w/ sterile saline	transplant	disinfect./inoc. with forearm from same-sex other (2hrs)
634	F312H7	1045	forehead	forehead	Skin	F3	day 1	swab w/ sterile saline	transplant	disinfect./inoc. with tongue from self (2hrs)
635	F312H8	1348	forehead	forehead	Skin	F3	day 1	swab w/ sterile saline	transplant	disinfect./inoc. with tongue from same-sex other (2hrs)
636	F314A1	1175	left volar forearm	forearm	Skin	F3	day 1	swab w/ sterile saline	transplant	disinfect./inoc. with forehead from self (4hrs)
637	F314A2	1241	left volar forearm	forearm	Skin	F3	day 1	swab w/ sterile saline	transplant	disinfect./inoc. with forehead from same-sex other (4hrs)
638	F314A3	1087	left volar forearm	forearm	Skin	F3	day 1	swab w/ sterile saline	transplant	disinfect./inoc. with tongue from self (4hrs)
639	F314A4	1228	left volar forearm	forearm	Skin	F3	day 1	swab w/ sterile saline	transplant	disinfect./inoc. with tongue from same-sex other (4hrs)
640	F314H5	1404	forehead	forehead	Skin	F3	day 1	swab w/ sterile saline	transplant	disinfect./inoc. with forearm from self (4hrs)
641	F314H6	1327	forehead	forehead	Skin	F3	day 1	swab w/ sterile saline	transplant	disinfect./inoc. with forearm from same-sex other (4hrs)
642	F314H7	1219	forehead	forehead	Skin	F3	day 1	swab w/ sterile saline	transplant	disinfect./inoc. with tongue from self (4hrs)
643	F314H8	1245	forehead	forehead	Skin	F3	day 1	swab w/ sterile saline	transplant	disinfect./inoc. with tongue from same-sex other (4hrs)
644	F318A1	1237	left volar forearm	forearm	Skin	F3	day 1	swab w/ sterile saline	transplant	disinfect./inoc. with forehead from self (8hrs)
645	F318A2	1368	left volar forearm	forearm	Skin	F3	day 1	swab w/ sterile saline	transplant	disinfect./inoc. with forehead from same-sex other (8hrs)
646	F318A3	1108	left volar forearm	forearm	Skin	F3	day 1	swab w/ sterile saline	transplant	disinfect./inoc. with tongue from self (8hrs)
647	F318A4	1251	left volar forearm	forearm	Skin	F3	day 1	swab w/ sterile saline	transplant	disinfect./inoc. with tongue from same-sex other (8hrs)
648	F318H5	1496	forehead	forehead	Skin	F3	day 1	swab w/ sterile saline	transplant	disinfect./inoc. with forearm from self (8hrs)

Table S1. Sample information

#	SampleID	No. of reads	Sample site (anatomical)	Sample site (common)	Body habitat	Host sex, indiv	Day	Sample method	Study	Treatment
649	F318H6	1339	forehead	forehead	Skin	F3	day 1	swab w/ sterile saline	transplant	disinfect./inoc. with forearm from same-sex other (8hrs)
650	F318H7	1400	forehead	forehead	Skin	F3	day 1	swab w/ sterile saline	transplant	disinfect./inoc. with tongue from self (8hrs)
651	F318H8	1370	forehead	forehead	Skin	F3	day 1	swab w/ sterile saline	transplant	disinfect./inoc. with tongue from same-sex other (8hrs)
652	F320A1	1012	left volar forearm	forearm	Skin	F3	day 2	swab w/ sterile saline	transplant	none
653	F320A2	1507	left volar forearm	forearm	Skin	F3	day 2	swab w/ sterile saline	transplant	none
654	F320A3	1407	left volar forearm	forearm	Skin	F3	day 2	swab w/ sterile saline	transplant	none
655	F320A4	1402	left volar forearm	forearm	Skin	F3	day 2	swab w/ sterile saline	transplant	none
656	F320H5	1468	forehead	forehead	Skin	F3	day 2	swab w/ sterile saline	transplant	none
657	F320H6	1415	forehead	forehead	Skin	F3	day 2	swab w/ sterile saline	transplant	none
658	F320H7	1478	forehead	forehead	Skin	F3	day 2	swab w/ sterile saline	transplant	none
659	F320H8	1465	forehead	forehead	Skin	F3	day 2	swab w/ sterile saline	transplant	none
660	F320T	938	dorsal surface of tongue	tongue	Oral cavity	F3	day 2	swab	transplant	none
661	F322A1	1480	left volar forearm	forearm	Skin	F3	day 2	swab w/ sterile saline	transplant	disinfect./inoc. with forehead from self (2hrs)
662	F322A2	1532	left volar forearm	forearm	Skin	F3	day 2	swab w/ sterile saline	transplant	disinfect./inoc. with forehead from same-sex other (2hrs)
663	F322A3	1222	left volar forearm	forearm	Skin	F3	day 2	swab w/ sterile saline	transplant	disinfect./inoc. with tongue from self (2hrs)
664	F322A4	1461	left volar forearm	forearm	Skin	F3	day 2	swab w/ sterile saline	transplant	disinfect./inoc. with tongue from same-sex other (2hrs)
665	F322H5	1461	forehead	forehead	Skin	F3	day 2	swab w/ sterile saline	transplant	disinfect./inoc. with forearm from self (2hrs)
666	F322H6	1398	forehead	forehead	Skin	F3	day 2	swab w/ sterile saline	transplant	disinfect./inoc. with forearm from same-sex other (2hrs)
667	F322H7	1502	forehead	forehead	Skin	F3	day 2	swab w/ sterile saline	transplant	disinfect./inoc. with tongue from self (2hrs)
668	F322H8	1479	forehead	forehead	Skin	F3	day 2	swab w/ sterile saline	transplant	disinfect./inoc. with tongue from same-sex other (2hrs)
669	F324A1	1487	left volar forearm	forearm	Skin	F3	day 2	swab w/ sterile saline	transplant	disinfect./inoc. with forehead from self (4hrs)
670	F324A2	1517	left volar forearm	forearm	Skin	F3	day 2	swab w/ sterile saline	transplant	disinfect./inoc. with forehead from same-sex other (4hrs)
671	F324A3	1308	left volar forearm	forearm	Skin	F3	day 2	swab w/ sterile saline	transplant	disinfect./inoc. with tongue from self (4hrs)
672	F324A4	1379	left volar forearm	forearm	Skin	F3	day 2	swab w/ sterile saline	transplant	disinfect./inoc. with tongue from same-sex other (4hrs)
673	F324H5	1410	forehead	forehead	Skin	F3	day 2	swab w/ sterile saline	transplant	disinfect./inoc. with forearm from self (4hrs)
674	F324H6	1424	forehead	forehead	Skin	F3	day 2	swab w/ sterile saline	transplant	disinfect./inoc. with forearm from same-sex other (4hrs)
675	F324H7	1384	forehead	forehead	Skin	F3	day 2	swab w/ sterile saline	transplant	disinfect./inoc. with tongue from self (4hrs)
676	F324H8	1390	forehead	forehead	Skin	F3	day 2	swab w/ sterile saline	transplant	disinfect./inoc. with tongue from same-sex other (4hrs)
677	F328A1	1467	left volar forearm	forearm	Skin	F3	day 2	swab w/ sterile saline	transplant	disinfect./inoc. with forehead from self (8hrs)
678	F328A2	1260	left volar forearm	forearm	Skin	F3	day 2	swab w/ sterile saline	transplant	disinfect./inoc. with forehead from same-sex other (8hrs)
679	F328A3	1251	left volar forearm	forearm	Skin	F3	day 2	swab w/ sterile saline	transplant	disinfect./inoc. with tongue from self (8hrs)
680	F328A4	1340	left volar forearm	forearm	Skin	F3	day 2	swab w/ sterile saline	transplant	disinfect./inoc. with tongue from same-sex other (8hrs)
681	F328H5	1451	forehead	forehead	Skin	F3	day 2	swab w/ sterile saline	transplant	disinfect./inoc. with forearm from self (8hrs)
682	F328H6	1404	forehead	forehead	Skin	F3	day 2	swab w/ sterile saline	transplant	disinfect./inoc. with forearm from same-sex other (8hrs)
683	F328H7	1470	forehead	forehead	Skin	F3	day 2	swab w/ sterile saline	transplant	disinfect./inoc. with tongue from self (8hrs)
684	F328H8	1347	forehead	forehead	Skin	F3	day 2	swab w/ sterile saline	transplant	disinfect./inoc. with tongue from same-sex other (8hrs)

Table S1. Sample information

#	SampleID	No. of reads	Sample site (anatomical)	Sample site (common)	Body habitat	Host sex, indiv	Day	Sample method	Study	Treatment
685	M110A1	1286	left volar forearm	forearm	Skin	M1	day 1	swab w/ sterile saline	transplant	none
686	M110A2	1399	left volar forearm	forearm	Skin	M1	day 1	swab w/ sterile saline	transplant	none
687	M110A3	1377	left volar forearm	forearm	Skin	M1	day 1	swab w/ sterile saline	transplant	none
688	M110A4	1464	left volar forearm	forearm	Skin	M1	day 1	swab w/ sterile saline	transplant	none
689	M110H5	1395	forehead	forehead	Skin	M1	day 1	swab w/ sterile saline	transplant	none
690	M110H6	1471	forehead	forehead	Skin	M1	day 1	swab w/ sterile saline	transplant	none
691	M110H7	1413	forehead	forehead	Skin	M1	day 1	swab w/ sterile saline	transplant	none
692	M110H8	1494	forehead	forehead	Skin	M1	day 1	swab w/ sterile saline	transplant	none
693	M110T	905	dorsal surface of tongue	tongue	Oral cavity	M1	day 1	swab	transplant	none
694	M112A1	1285	left volar forearm	forearm	Skin	M1	day 1	swab w/ sterile saline	transplant	disinfect./inoc. with forehead from self (2hrs)
695	M112A2	1174	left volar forearm	forearm	Skin	M1	day 1	swab w/ sterile saline	transplant	disinfect./inoc. with forehead from same-sex other (2hrs)
696	M112A3	1243	left volar forearm	forearm	Skin	M1	day 1	swab w/ sterile saline	transplant	disinfect./inoc. with tongue from self (2hrs)
697	M112A4	1256	left volar forearm	forearm	Skin	M1	day 1	swab w/ sterile saline	transplant	disinfect./inoc. with tongue from same-sex other (2hrs)
698	M112H5	1208	forehead	forehead	Skin	M1	day 1	swab w/ sterile saline	transplant	disinfect./inoc. with forearm from self (2hrs)
699	M112H6	1281	forehead	forehead	Skin	M1	day 1	swab w/ sterile saline	transplant	disinfect./inoc. with forearm from same-sex other (2hrs)
700	M112H7	1351	forehead	forehead	Skin	M1	day 1	swab w/ sterile saline	transplant	disinfect./inoc. with tongue from self (2hrs)
701	M112H8	1284	forehead	forehead	Skin	M1	day 1	swab w/ sterile saline	transplant	disinfect./inoc. with tongue from same-sex other (2hrs)
702	M114A1	1230	left volar forearm	forearm	Skin	M1	day 1	swab w/ sterile saline	transplant	disinfect./inoc. with forehead from self (4hrs)
703	M114A2	1330	left volar forearm	forearm	Skin	M1	day 1	swab w/ sterile saline	transplant	disinfect./inoc. with forehead from same-sex other (4hrs)
704	M114A3	1279	left volar forearm	forearm	Skin	M1	day 1	swab w/ sterile saline	transplant	disinfect./inoc. with tongue from self (4hrs)
705	M114A4	1315	left volar forearm	forearm	Skin	M1	day 1	swab w/ sterile saline	transplant	disinfect./inoc. with tongue from same-sex other (4hrs)
706	M114H5	1313	forehead	forehead	Skin	M1	day 1	swab w/ sterile saline	transplant	disinfect./inoc. with forearm from self (4hrs)
707	M114H6	1543	forehead	forehead	Skin	M1	day 1	swab w/ sterile saline	transplant	disinfect./inoc. with forearm from same-sex other (4hrs)
708	M114H7	1412	forehead	forehead	Skin	M1	day 1	swab w/ sterile saline	transplant	disinfect./inoc. with tongue from self (4hrs)
709	M114H8	1279	forehead	forehead	Skin	M1	day 1	swab w/ sterile saline	transplant	disinfect./inoc. with tongue from same-sex other (4hrs)
710	M118A1	1208	left volar forearm	forearm	Skin	M1	day 1	swab w/ sterile saline	transplant	disinfect./inoc. with forehead from self (8hrs)
711	M118A2	1302	left volar forearm	forearm	Skin	M1	day 1	swab w/ sterile saline	transplant	disinfect./inoc. with forehead from same-sex other (8hrs)
712	M118A3	1202	left volar forearm	forearm	Skin	M1	day 1	swab w/ sterile saline	transplant	disinfect./inoc. with tongue from self (8hrs)
713	M118A4	1200	left volar forearm	forearm	Skin	M1	day 1	swab w/ sterile saline	transplant	disinfect./inoc. with tongue from same-sex other (8hrs)
714	M118H5	1092	forehead	forehead	Skin	M1	day 1	swab w/ sterile saline	transplant	disinfect./inoc. with forearm from self (8hrs)
715	M118H6	1402	forehead	forehead	Skin	M1	day 1	swab w/ sterile saline	transplant	disinfect./inoc. with forearm from same-sex other (8hrs)
716	M118H7	1292	forehead	forehead	Skin	M1	day 1	swab w/ sterile saline	transplant	disinfect./inoc. with tongue from self (8hrs)
717	M118H8	1437	forehead	forehead	Skin	M1	day 1	swab w/ sterile saline	transplant	disinfect./inoc. with tongue from same-sex other (8hrs)
718	M120A1	1364	left volar forearm	forearm	Skin	M1	day 2	swab w/ sterile saline	transplant	none
719	M120A2	1345	left volar forearm	forearm	Skin	M1	day 2	swab w/ sterile saline	transplant	none
720	M120A3	1399	left volar forearm	forearm	Skin	M1	day 2	swab w/ sterile saline	transplant	none

Table S1. Sample information

#	SampleID	No. of reads	Sample site (anatomical)	Sample site (common)	Body habitat	Host sex, indiv	Day	Sample method	Study	Treatment
721	M120A4	1331	left volar forearm	forearm	Skin	M1	day 2	swab w/ sterile saline	transplant	none
722	M120H5	1302	forehead	forehead	Skin	M1	day 2	swab w/ sterile saline	transplant	none
723	M120H6	1387	forehead	forehead	Skin	M1	day 2	swab w/ sterile saline	transplant	none
724	M120H7	1384	forehead	forehead	Skin	M1	day 2	swab w/ sterile saline	transplant	none
725	M120H8	1459	forehead	forehead	Skin	M1	day 2	swab w/ sterile saline	transplant	none
726	M120T	896	dorsal surface of tongue	tongue	Oral cavity	M1	day 2	swab	transplant	none
727	M122A1	1351	left volar forearm	forearm	Skin	M1	day 2	swab w/ sterile saline	transplant	disinfect./inoc. with forehead from self (2hrs)
728	M122A2	1314	left volar forearm	forearm	Skin	M1	day 2	swab w/ sterile saline	transplant	disinfect./inoc. with forehead from same-sex other (2hrs)
729	M122A3	1287	left volar forearm	forearm	Skin	M1	day 2	swab w/ sterile saline	transplant	disinfect./inoc. with tongue from self (2hrs)
730	M122A4	1060	left volar forearm	forearm	Skin	M1	day 2	swab w/ sterile saline	transplant	disinfect./inoc. with tongue from same-sex other (2hrs)
731	M122H5	1314	forehead	forehead	Skin	M1	day 2	swab w/ sterile saline	transplant	disinfect./inoc. with forearm from self (2hrs)
732	M122H6	1404	forehead	forehead	Skin	M1	day 2	swab w/ sterile saline	transplant	disinfect./inoc. with forearm from same-sex other (2hrs)
733	M122H7	1332	forehead	forehead	Skin	M1	day 2	swab w/ sterile saline	transplant	disinfect./inoc. with tongue from self (2hrs)
734	M122H8	1355	forehead	forehead	Skin	M1	day 2	swab w/ sterile saline	transplant	disinfect./inoc. with tongue from same-sex other (2hrs)
735	M124A1	1339	left volar forearm	forearm	Skin	M1	day 2	swab w/ sterile saline	transplant	disinfect./inoc. with forehead from self (4hrs)
736	M124A2	1221	left volar forearm	forearm	Skin	M1	day 2	swab w/ sterile saline	transplant	disinfect./inoc. with forehead from same-sex other (4hrs)
737	M124A3	1224	left volar forearm	forearm	Skin	M1	day 2	swab w/ sterile saline	transplant	disinfect./inoc. with tongue from self (4hrs)
738	M124A4	1097	left volar forearm	forearm	Skin	M1	day 2	swab w/ sterile saline	transplant	disinfect./inoc. with tongue from same-sex other (4hrs)
739	M124H5	1437	forehead	forehead	Skin	M1	day 2	swab w/ sterile saline	transplant	disinfect./inoc. with forearm from self (4hrs)
740	M124H6	1419	forehead	forehead	Skin	M1	day 2	swab w/ sterile saline	transplant	disinfect./inoc. with forearm from same-sex other (4hrs)
741	M124H7	1264	forehead	forehead	Skin	M1	day 2	swab w/ sterile saline	transplant	disinfect./inoc. with tongue from self (4hrs)
742	M124H8	1192	forehead	forehead	Skin	M1	day 2	swab w/ sterile saline	transplant	disinfect./inoc. with tongue from same-sex other (4hrs)
743	M128A1	893	left volar forearm	forearm	Skin	M1	day 2	swab w/ sterile saline	transplant	disinfect./inoc. with forehead from self (8hrs)
744	M128A2	1292	left volar forearm	forearm	Skin	M1	day 2	swab w/ sterile saline	transplant	disinfect./inoc. with forehead from same-sex other (8hrs)
745	M128A3	1182	left volar forearm	forearm	Skin	M1	day 2	swab w/ sterile saline	transplant	disinfect./inoc. with tongue from self (8hrs)
746	M128A4	1065	left volar forearm	forearm	Skin	M1	day 2	swab w/ sterile saline	transplant	disinfect./inoc. with tongue from same-sex other (8hrs)
747	M128H5	1356	forehead	forehead	Skin	M1	day 2	swab w/ sterile saline	transplant	disinfect./inoc. with forearm from self (8hrs)
748	M128H6	1444	forehead	forehead	Skin	M1	day 2	swab w/ sterile saline	transplant	disinfect./inoc. with forearm from same-sex other (8hrs)
749	M128H7	1305	forehead	forehead	Skin	M1	day 2	swab w/ sterile saline	transplant	disinfect./inoc. with tongue from self (8hrs)
750	M128H8	1199	forehead	forehead	Skin	M1	day 2	swab w/ sterile saline	transplant	disinfect./inoc. with tongue from same-sex other (8hrs)
751	M410A1	1374	left volar forearm	forearm	Skin	M4	day 1	swab w/ sterile saline	transplant	none
752	M410A2	773	left volar forearm	forearm	Skin	M4	day 1	swab w/ sterile saline	transplant	none
753	M410A3	1406	left volar forearm	forearm	Skin	M4	day 1	swab w/ sterile saline	transplant	none
754	M410A4	1313	left volar forearm	forearm	Skin	M4	day 1	swab w/ sterile saline	transplant	none
755	M410H5	1373	forehead	forehead	Skin	M4	day 1	swab w/ sterile saline	transplant	none
756	M410H6	1265	forehead	forehead	Skin	M4	day 1	swab w/ sterile saline	transplant	none

Table S1. Sample information

#	SampleID	No. of reads	Sample site (anatomical)	Sample site (common)	Body habitat	Host sex, indiv	Day	Sample method	Study	Treatment
757	M410H7	1334	forehead	forehead	Skin	M4	day 1	swab w/ sterile saline	transplant	none
758	M410H8	1314	forehead	forehead	Skin	M4	day 1	swab w/ sterile saline	transplant	none
759	M410T	772	dorsal surface of tongue	tongue	Oral cavity	M4	day 1	swab	transplant	none
760	M412A1	1199	left volar forearm	forearm	Skin	M4	day 1	swab w/ sterile saline	transplant	disinfect./inoc. with forehead from self (2hrs)
761	M412A2	1188	left volar forearm	forearm	Skin	M4	day 1	swab w/ sterile saline	transplant	disinfect./inoc. with forehead from same-sex other (2hrs)
762	M412A3	1160	left volar forearm	forearm	Skin	M4	day 1	swab w/ sterile saline	transplant	disinfect./inoc. with tongue from self (2hrs)
763	M412A4	1632	left volar forearm	forearm	Skin	M4	day 1	swab w/ sterile saline	transplant	disinfect./inoc. with tongue from same-sex other (2hrs)
764	M412H5	1400	forehead	forehead	Skin	M4	day 1	swab w/ sterile saline	transplant	disinfect./inoc. with forearm from self (2hrs)
765	M412H6	1269	forehead	forehead	Skin	M4	day 1	swab w/ sterile saline	transplant	disinfect./inoc. with forearm from same-sex other (2hrs)
766	M412H7	1299	forehead	forehead	Skin	M4	day 1	swab w/ sterile saline	transplant	disinfect./inoc. with tongue from self (2hrs)
767	M412H8	1284	forehead	forehead	Skin	M4	day 1	swab w/ sterile saline	transplant	disinfect./inoc. with tongue from same-sex other (2hrs)
768	M414A1	1265	left volar forearm	forearm	Skin	M4	day 1	swab w/ sterile saline	transplant	disinfect./inoc. with forehead from self (4hrs)
769	M414A2	1191	left volar forearm	forearm	Skin	M4	day 1	swab w/ sterile saline	transplant	disinfect./inoc. with forehead from same-sex other (4hrs)
770	M414A3	1091	left volar forearm	forearm	Skin	M4	day 1	swab w/ sterile saline	transplant	disinfect./inoc. with tongue from self (4hrs)
771	M414A4	1234	left volar forearm	forearm	Skin	M4	day 1	swab w/ sterile saline	transplant	disinfect./inoc. with tongue from same-sex other (4hrs)
772	M414H5	1445	forehead	forehead	Skin	M4	day 1	swab w/ sterile saline	transplant	disinfect./inoc. with forearm from self (4hrs)
773	M414H6	1495	forehead	forehead	Skin	M4	day 1	swab w/ sterile saline	transplant	disinfect./inoc. with forearm from same-sex other (4hrs)
774	M414H7	1223	forehead	forehead	Skin	M4	day 1	swab w/ sterile saline	transplant	disinfect./inoc. with tongue from self (4hrs)
775	M414H8	1346	forehead	forehead	Skin	M4	day 1	swab w/ sterile saline	transplant	disinfect./inoc. with tongue from same-sex other (4hrs)
776	M418A1	1258	left volar forearm	forearm	Skin	M4	day 1	swab w/ sterile saline	transplant	disinfect./inoc. with forehead from self (8hrs)
777	M418A2	1123	left volar forearm	forearm	Skin	M4	day 1	swab w/ sterile saline	transplant	disinfect./inoc. with forehead from same-sex other (8hrs)
778	M418A3	1278	left volar forearm	forearm	Skin	M4	day 1	swab w/ sterile saline	transplant	disinfect./inoc. with tongue from self (8hrs)
779	M418A4	1247	left volar forearm	forearm	Skin	M4	day 1	swab w/ sterile saline	transplant	disinfect./inoc. with tongue from same-sex other (8hrs)
780	M418H5	1385	forehead	forehead	Skin	M4	day 1	swab w/ sterile saline	transplant	disinfect./inoc. with forearm from self (8hrs)
781	M418H6	1620	forehead	forehead	Skin	M4	day 1	swab w/ sterile saline	transplant	disinfect./inoc. with forearm from same-sex other (8hrs)
782	M418H7	1399	forehead	forehead	Skin	M4	day 1	swab w/ sterile saline	transplant	disinfect./inoc. with tongue from self (8hrs)
783	M418H8	1367	forehead	forehead	Skin	M4	day 1	swab w/ sterile saline	transplant	disinfect./inoc. with tongue from same-sex other (8hrs)
784	M420A1	696	left volar forearm	forearm	Skin	M4	day 2	swab w/ sterile saline	transplant	none
785	M420A2	1237	left volar forearm	forearm	Skin	M4	day 2	swab w/ sterile saline	transplant	none
786	M420A3	1306	left volar forearm	forearm	Skin	M4	day 2	swab w/ sterile saline	transplant	none
787	M420A4	1420	left volar forearm	forearm	Skin	M4	day 2	swab w/ sterile saline	transplant	none
788	M420H5	1420	forehead	forehead	Skin	M4	day 2	swab w/ sterile saline	transplant	none
789	M420H6	1454	forehead	forehead	Skin	M4	day 2	swab w/ sterile saline	transplant	none
790	M420H7	1479	forehead	forehead	Skin	M4	day 2	swab w/ sterile saline	transplant	none
791	M420H8	1551	forehead	forehead	Skin	M4	day 2	swab w/ sterile saline	transplant	none
792	M420T	948	dorsal surface of tongue	tongue	Oral cavity	M4	day 2	swab	transplant	none

Table S1. Sample information

#	SampleID	No. of reads	Sample site (anatomical)	Sample site (common)	Body habitat	Host sex, indiv	Day	Sample method	Study	Treatment
793	M422A1	1314	left volar forearm	forearm	Skin	M4	day 2	swab w/ sterile saline	transplant	disinfect./inoc. with forehead from self (2hrs)
794	M422A2	1249	left volar forearm	forearm	Skin	M4	day 2	swab w/ sterile saline	transplant	disinfect./inoc. with forehead from same-sex other (2hrs)
795	M422A3	1478	left volar forearm	forearm	Skin	M4	day 2	swab w/ sterile saline	transplant	disinfect./inoc. with tongue from self (2hrs)
796	M422A4	1450	left volar forearm	forearm	Skin	M4	day 2	swab w/ sterile saline	transplant	disinfect./inoc. with tongue from same-sex other (2hrs)
797	M422H5	1476	forehead	forehead	Skin	M4	day 2	swab w/ sterile saline	transplant	disinfect./inoc. with forearm from self (2hrs)
798	M422H6	1818	forehead	forehead	Skin	M4	day 2	swab w/ sterile saline	transplant	disinfect./inoc. with forearm from same-sex other (2hrs)
799	M422H7	1446	forehead	forehead	Skin	M4	day 2	swab w/ sterile saline	transplant	disinfect./inoc. with tongue from self (2hrs)
800	M422H8	1521	forehead	forehead	Skin	M4	day 2	swab w/ sterile saline	transplant	disinfect./inoc. with tongue from same-sex other (2hrs)
801	M424A1	1401	left volar forearm	forearm	Skin	M4	day 2	swab w/ sterile saline	transplant	disinfect./inoc. with forehead from self (4hrs)
802	M424A2	1185	left volar forearm	forearm	Skin	M4	day 2	swab w/ sterile saline	transplant	disinfect./inoc. with forehead from same-sex other (4hrs)
803	M424A3	1255	left volar forearm	forearm	Skin	M4	day 2	swab w/ sterile saline	transplant	disinfect./inoc. with tongue from self (4hrs)
804	M424H5	1522	forehead	forehead	Skin	M4	day 2	swab w/ sterile saline	transplant	disinfect./inoc. with forearm from self (4hrs)
805	M424H6	1460	forehead	forehead	Skin	M4	day 2	swab w/ sterile saline	transplant	disinfect./inoc. with forearm from same-sex other (4hrs)
806	M424H7	1458	forehead	forehead	Skin	M4	day 2	swab w/ sterile saline	transplant	disinfect./inoc. with tongue from self (4hrs)
807	M424H8	1379	forehead	forehead	Skin	M4	day 2	swab w/ sterile saline	transplant	disinfect./inoc. with tongue from same-sex other (4hrs)
808	M428A1	1238	left volar forearm	forearm	Skin	M4	day 2	swab w/ sterile saline	transplant	disinfect./inoc. with forehead from self (8hrs)
809	M428A2	1154	left volar forearm	forearm	Skin	M4	day 2	swab w/ sterile saline	transplant	disinfect./inoc. with forehead from same-sex other (8hrs)
810	M428A3	1239	left volar forearm	forearm	Skin	M4	day 2	swab w/ sterile saline	transplant	disinfect./inoc. with tongue from self (8hrs)
811	M428A4	1401	left volar forearm	forearm	Skin	M4	day 2	swab w/ sterile saline	transplant	disinfect./inoc. with tongue from same-sex other (8hrs)
812	M428H5	1617	forehead	forehead	Skin	M4	day 2	swab w/ sterile saline	transplant	disinfect./inoc. with forearm from self (8hrs)
813	M428H6	1700	forehead	forehead	Skin	M4	day 2	swab w/ sterile saline	transplant	disinfect./inoc. with forearm from same-sex other (8hrs)
814	M428H7	1481	forehead	forehead	Skin	M4	day 2	swab w/ sterile saline	transplant	disinfect./inoc. with tongue from self (8hrs)
815	M428H8	1470	forehead	forehead	Skin	M4	day 2	swab w/ sterile saline	transplant	disinfect./inoc. with tongue from same-sex other (8hrs)
		1,071,515	Total no. of sequences							
		1,315	Mean no. of sequences per sample							
		420	SD no. of sequences per sample							

Supplemental References

- S1. L. C. Paulino, C. H. Tseng, B. E. Strober, M. J. Blaser, *J. Clin. Microbiol.* **44**, 2933 (2006).
- S2. N. Fierer, M. Hamady, C. L. Lauber, R. Knight, *Proc. Natl. Acad. Sci. U.S.A.* **105**, 17994 (2008).
- S3. E. A. Grice et al., *Science* **324**, 1190 (2009).
- S4. P. B. Eckburg et al., *Science* **308**, 1635 (2005).
- S5. Z. Z. Liu, C. Lozupone, M. Hamady, F. D. Bushman, R. Knight, *Nucleic Acids Res.* **35** (2007).
- S6. M. Hamady, J. J. Walker, J. K. Harris, N. J. Gold, R. Knight, *Nature Methods* **5**, 235 (2008).
- S7. W. Z. Li, A. Godzik, *Bioinformatics* **22**, 1658 (2006).
- S8. T. Z. DeSantis et al., *Nucleic Acids Res.* **34**, W394 (2006).
- S9. T. Z. DeSantis et al., *Appl. Environ. Microbiol.* **72**, 5069 (2006).
- S10. M. N. Price, P. S. Dehal, A. P. Arkin, *Mol. Biol. Evol.* doi:10.1093/molbev/msp077 (2009).
- S11. Q. Wang, G. M. Garrity, J. M. Tiedje, J. R. Cole, *Appl. Environ. Microbiol.* **73**, 5261 (2007).
- S12. D. P. Faith, *Biol. Conserv.* **61**, 1 (1992).
- S13. C. Lozupone, R. Knight, *Appl. Environ. Microbiol.* **71**, 8228 (2005).
- S14. C. A. Lozupone, M. Hamady, S. T. Kelley, R. Knight, *Appl. Environ. Microbiol.* **73**, 1576 (2007).
- S15. C. A. Lozupone, R. Knight, *FEMS Microbiol. Rev.* **32**, 557 (2008).
- S16. D. P. Faith, P. R. Minchin, L. Belbin, *Vegetatio* **69**, 57 (1987).
- S17. A. R. Quinlan, D. A. Stewart, M. P. Stromberg, G. T. Marth, *Nature Methods* **5**, 179 (2008).
- S18. M. Solmone et al., *J. Virol.* **83**, 1718 (2009).

- S19. G. Rozera et al., *Retrovirology* **6**, 15 (2009).
- S20. S. M. Huse, J. A. Huber, H. G. Morrison, M. L. Sogin, D. Mark Welch, *Genome Biol.* **8**, R143 (2007).