

Sudoku Mild No 15,204

	3	5				6	2	
		6		1		9	7	
3	7	9		6				
8	6	1			9	3		
		2						
	2		9	3	6	4	1	
		8		4	7		9	
				2	1			

Fiendish No 15,205

Super fiendish No 15,206

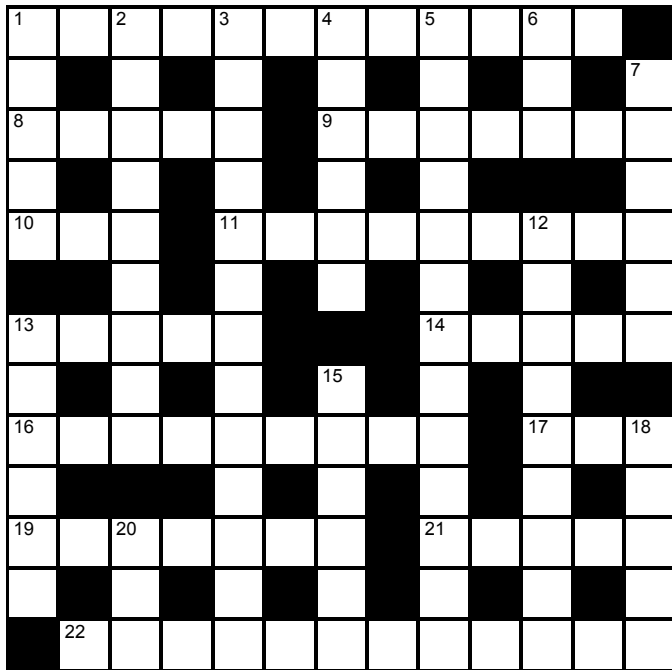
								7
	4			6	8			2
	8		4		5		3	
3		7	8		2			
2		9	5		6			
	3		1		9		7	
	2			5	3			6
								1

						3		
		9			8		6	
		8		3				4
	1		4	8			3	
2	5				1	7		
	8				6			
	4					9	5	
		5	8	7	9			
				6				

© PIZZLER MEDIA

Cluelines Stuck on Sudoku, Killer or KenKen? Call 0901 293 6263 before midnight to receive four clues for any of today's puzzles. Calls cost £1 plus your telephone company's network access charge. SP: Spoke, 0333 202 3390 (Mon-Fri 9am-5.30pm).

The Times Quick Cryptic No 2773 by Cheeko



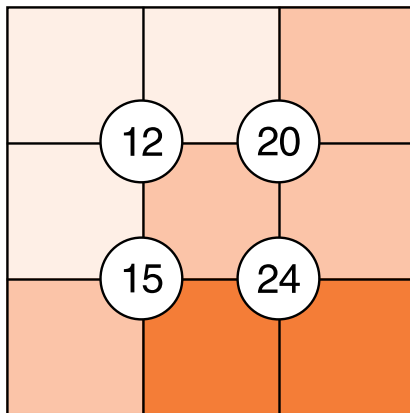
Across

- 1 Spat mum's chop out — no need for these? (7,5)
- 8 Warning in the style of Royal Marines (5)
- 9 Moderately slow poet pursues article (7)
- 10 Run, say, number on estate? (3)
- 11 Insect crossing black sticky stuff is slowing down (9)
- 13 Popular, outwardly ethereal holiday venue (5)
- 14 Nag Romeo, in tights (5)
- 16 Give Cheeko money in split debt settlement (9)
- 17 Not prepared to retreat in conflict (3)
- 19 Published British newspaper best when boasting (7)
- 21 Famous landscaper's name on top of hill (5)
- 22 PM Heath irate about site for old contest (12)

Down

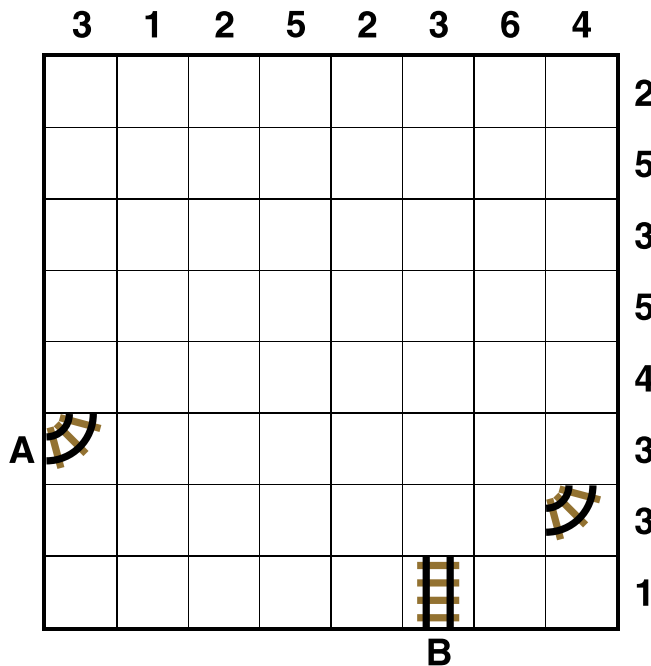
- 1 Section of flight starts to surge through sky (5)
- 2 Butterfly operating strangely (6-3)
- 3 Matriarch lady moving somewhere in London (9,4)
- 4 Male with skills makes suit (6)
- 5 Illicit burden athlete dealt with (5,3,5)
- 6 Vessel in first half of canal (3)
- 7 Insect let loose after another insect (6)
- 12 Plant weapon on source (9)
- 13 Fear Hard Right, caught between two alternatives (6)
- 15 Measurement of 8 hours to begin with (6)
- 18 Classify emotion when cycling (5)
- 20 Perhaps pet test is over (3)

Suko No 4213



Place the numbers 1 to 9 in the spaces so that the number in each circle is equal to the sum of the four surrounding spaces, and each colour total is correct

Train Tracks No 2340



Lay tracks to enable the train to travel from village A to village B. The numbers indicate how many sections of track go in each row and column. There are only straight sections and curved sections. The track cannot cross itself.

Word watch David Parfitt

Ambs-ace

- a A subdivision of land for grazing
- b The lowest possible throw at dice
- c A form of serve in real tennis

Dimidiate

- a To darken before nightfall
- b To grow shy or afraid
- c Divided into halves

Tilleul

- a A ploughshare
- b A pale yellowish-green colour
- c A person steering a small boat

Tetonor Tricky No 498

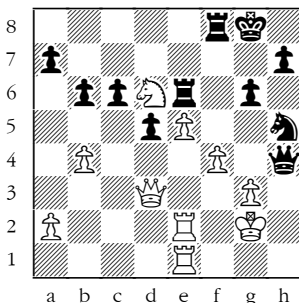
160	44	66	264
28	37	195	42
77	192	18	35
360	38	41	336

1	5	6	11	16	32	41
---	---	---	----	----	----	----

When complete, the strip below the grid can be split into eight pairs of numbers. Adding the numbers in a pair gives one of the 16 numbers in the grid. Multiplying them gives a different number in the grid. For example, a 4 and 6 in the strip could be paired to make 10 (4+6) and 24 (4x6) in the grid. Enter each sum below the corresponding number in the grid. The blanks in the strip must be deduced, bearing in mind the numbers are listed in ascending order.

The next Tetonor puzzle will appear on Tuesday

Winning Move



Black to play.
This position is from Hacker-Kunin, Copenhagen 2024.

Black has two good moves here. The first is the tactical 1 ... Qxf4. This is strong as after 2 gxf4 Nxf4+ Black will capture the white queen with a winning position. However, White could meet 1 ... Qxf4 with 2 Qe3 and although Black is still winning, White can put up resistance. Can you spot a stronger line for Black that wins at once?

Codeword No 5312

	16	14	15	25	5	24	3		24	12	24	20
2		2		5		13		14		14		24
23	2	20	23	2	21	8		1	24	10	8	15
11		24		15		17		8		13		9
5	22	20	8	11		5	22	13	14	14	11	
2				24		3		19		14		24
11	26	22	24	17	26		1	8	13	6	24	15
8		3		24		19		15				11
	23	2	12	2	15	2		8	13	13	14	R
7		26		12		6		13		2		5
2	18	17	5	3		12	3	14	2	11	8	21
4		5		8		14		5		24		8
26	14	3	9		12	3	14	20	20	14	6	

A B C D E F G H I J K L M N O P Q R S T U V W X Y Z

1	2	3	4	5	6	7	8	9	10	11	12	13
				U								R
14	15	16	17	18	19	20	21	22	23	24	25	26
							D					

Every letter in this crossword-style grid is represented by a number from 1 to 26. Each letter of the alphabet appears in the grid at least once. Use the letters already provided to work out the identity of further letters. Enter letters in the main grid and the smaller reference grid until all 26 letters of the alphabet have been accounted for. Proper nouns are excluded. *Yesterday's solution, right*

Cluelines **Stuck on Codeword?** To receive 4 random clues call 0901 293 6262 or text TIMECODE to 64343. Calls cost £1 plus your telephone company's network access charge. Texts cost £1 plus your standard network charge. For the full solution call 0905 757 0142. Calls cost £1 per minute plus your telephone company's network access charge. SP: Spoke, 0333 202 3390 (Mon-Fri, 9am-5.30pm).

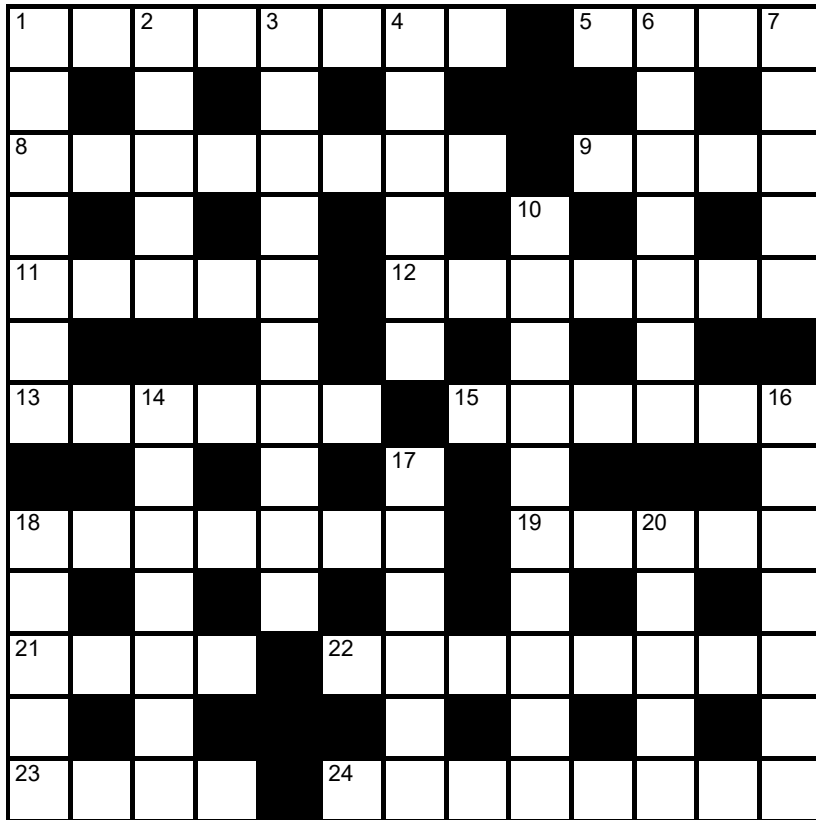
Lexica Easy No 7637

Hard No 7638

...	B	O	B	R	C	O	S	U	E	M	A	G	...
●							●	●							B
...													E
Y							U	R							A
...													E
S							M	T							O
...													F
L							B	K							...
...						
E							B	F							...
...						
D							L	U							...
...						
	U	E	H	N	●	S		A	E	M	H	R	B		

Slide the letters either horizontally or vertically back into the grid to produce a completed crossword. Letters are allowed to slide over other letters

times2 Crossword No 9628



Across

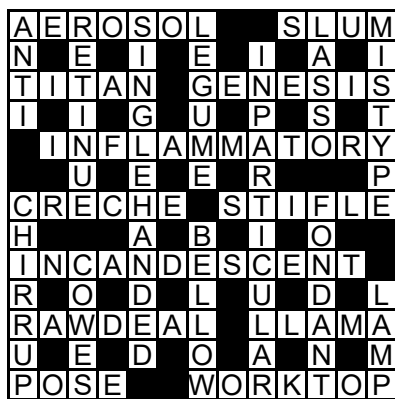
- 1 Without suffering adverse consequences (4-4)
- 5 Azure or ultramarine, eg (4)
- 8 Portrays (past events) through performance (2-6)
- 9 Richard I's successor (4)
- 11 V-shaped indentation (5)
- 12 Gin-based cocktail (7)
- 13 State capital of Tasmania (6)

- 15 Photographic device (6)
- 18 Most near (7)
- 19 Long walks (5)
- 21 Mete (out) (4)
- 22 Recording (film footage) (8)
- 23 Ceremony (4)
- 24 Unfounded, unjustified (8)

Down

- 1 Crumple up (7)
- 2 For all to see (5)
- 3 Very soft mattress (7,3)
- 4 Lay to rest in a sepulchre (6)
- 6 Elevate to the status of a celebrity (S, not Z) (7)
- 7 World-weary boredom (5)
- 10 Sports competitor who swims, cycles and runs (10)
- 14 Brochure (7)
- 16 Allocates, allots (7)
- 17 Infamous warlord who led the Huns (6)
- 18 Cone-bearing tree (5)
- 20 Cutting implement (5)

Solution to Crossword 9627



Need help with today's puzzle? Call 0905 757 0143 to check the answers. Calls cost £1 per minute plus your telephone company's network access charge. SP: Spoke, 0333 202 3390 (Mon-Fri 9am-5.30pm).

KenKen Difficult No 6304

6	120×		5-	7+	
3-				3÷	
	6	8+		2÷	
11+			3÷		13+
	11+	5-	1-	4-	

All the digits 1 to 6 must appear in every row and column. In each thick-line "block", the target number in the top left-hand corner is calculated from the digits in all the cells in the block, using the operation indicated by the symbol.

© 2010 KENKEN PUZZLE & TIM NEXTOY, DIST. BY UPS, INC. WWW.KENKEN.COM

Futoshiki No 4852

□	>	□	□	>	3	□
^		^				
□		□		□		□
					∇	
□		□		□		□
∇		∇				
□	<	□	<	□		□
∇						
□		□		□		3

Fill the blank squares so that every row and column contains each of the numbers 1 to 5 once only. The symbols between the squares indicate whether a number is larger (>) or smaller (<) than the number next to it.

Kakuro No 3811

	4	12		14	4		14	35	18
6			8				8		
18			13				29		
	16	29		11	9			13	
17			13				12		
8		15			14				12
	24			11			14		
	10		9				9		
10	24		8		15				
		7			13			4	15
				19					
12				11				8	

© PUZZLER MEDIA

Fill the grid using the numbers 1 to 9 only. The numbers in each horizontal or vertical run of white squares add up to the total in the triangle to its left or above it. The same number may occur more than once in a row or column, but not within the same run of white squares.

Quintagram®

Solve all five cryptic clues using each letter underneath once only

1 Not many in the auditorium?
That's a relief! (4)

— — — —

2 Terse about European armistice
(5)

— — — — —

3 The race to change farm unit (7)

— — — — — — —

4 Perfect example of quiet region
in Spain (7)

— — — — — — —

5 Separate mountain feature for
bird (9)

— — — — — — — — —

A	A	A	A	C	C	D	E
E	E	E	E	G	G	H	H
I	N	O	P	P	P	R	R
R	R	R	T	T	T	U	W

Brain Trainer

EASY	7	SQUARE IT	+ 11	30% OF IT	+ 6	x 2	- 12	÷ 4	+ 16	÷ 5	ANSWER	<input type="text"/>
MEDIUM	47	x 7	+ 88	x 2	- 68	50% OF IT	+ 99	1/2 OF IT	+ 78	x 2	ANSWER	<input type="text"/>
HARDER	89	x 6	+ 942	+ 1/2 OF IT	x 3	- 748	+ 1/2 OF IT	- 885	3/4 OF IT	- 658	ANSWER	<input type="text"/>

Polygon



From these letters, make words of **four** or more letters, always including the central letter. Answers must be in the *Concise Oxford Dictionary*, excluding capitalised words, plurals, conjugated verbs (past tense etc), adverbs ending in LY, comparatives and superlatives.
How you rate 12 words, average; 17, good; 20, very good; 23, excellent

Yesterday's answers
 emit, erst, item, merit, mist, mister, mistress, mite, miter, mitre, remit, resist, resit, rest, rite, sister, site, smite, smiter, stem, stir, stress, term, tier, time, timer, times, tire, tmesis, tress, trim

Cell Blocks No 5195

2		4		2
		2		2
	14			
3		4		3
	2		4	
			5	

Divide the grid into square or rectangular blocks, each containing one digit only. Every block must contain the number of cells indicated by the digit inside it.

Set Square No 3814

	x		x		= 40
x		÷		+	
7	-	1	x		= 48
-		x		÷	
	-		÷		= 1
=		=		=	
5		15		2	

Enter each of the numbers from 1 to 9 in the grid, so that the six sums work. We've placed two numbers to get you started. Each sum should be calculated left to right or top to bottom.

Please note, BODMAS does not apply

Killer Gentle No 9662

4	11		16	9	14	14		
	6					13	5	13
14	16		18	3				
				8		20		6
17		12		16		8		
	25	9	12		19		15	
							3	
14			7	13	7	16	14	8

Killer Tough No 9663

10			24		9		7	12
16				17	18	19		
21	20	18						16
							21	
		19				15		
	11		27	8				
18		14					13	7
		6						
	12			5		22		

As with standard Sudoku, fill the grid so that every column, every row and every 3x3 box contains the digits 1 to 9. Each set of cells joined by dotted lines must add up to the target number in its top-left corner. Within each set of cells joined by dotted lines, a digit cannot be repeated.

Cluelines Stuck on Sudoku, Killer or KenKen? Call 0901 293 6263 before midnight to receive four clues for any of today's puzzles. Calls cost £1 plus your telephone company's network access charge. SP: Spoke, 0333 202 3390 (Mon-Fri 9am-5.30pm).

Times Crossword 29,014

1		2		3			4	5		6		7		8
						9								
10										11				
12								13						
14						15				16				
														17
	18	19							20		21			
22														
23				24				25						
26						27								
28								29						

ACROSS

- 1 Muslim leader has a cheek, breaking into church (6)
- 4 Leaflet covering poor entertainment that kills the buzz (8)
- 10 Not confident, making changes by force (9)
- 11 Fleece provides warmth, after cold (5)
- 12 Transport uncle, for one, right away (7)
- 13 Seaport's redevelopment not needed (2,5)
- 14 Only partially clean a dirty bottom (5)
- 15 Disreputable, in without a date, drooped (8)
- 18 Pass on social occasion for sport (8)
- 20 Lawn in front covered in a lot of fertiliser (5)
- 23 A large tree next to small plants (7)
- 25 Informed about female with flea in ear? (4,3)
- 26 Engineers text covering one cathedral (5)
- 27 Scouting technique's thrown a crowd of townsmen at first (9)
- 28 Farm animals always knocked over orchid (8)
- 29 A demon barber and son quarrelling (2,4)

DOWN

- 1 From greasy spoon, a German stimulant (8)
- 2 Religious reformer is very funny, and fat (7)
- 3 Heath potentially made a first appearance (9)
- 5 Land cut back, one blocking airport that causes a glow in the dark (5,9)
- 6 Call for truce heard in scout groups (5)
- 7 Bishop perhaps about to dip into church collection (7)
- 8 Do the dirty on some woman for preference (6)
- 9 Remarkable rocky formation where unstable genius cast away (6,8)
- 16 School briefly allowed to be partnered in immoral activity (9)
- 17 *Three Sisters* run being cancelled in venues bearing fine (3,5)
- 19 Select a beer, taking work over (7)
- 21 One spotted curtain length turned up, concealing nothing (7)
- 22 Textile is wonderful, almost sumptuous (6)
- 24 Nosy, first to look a veteran nursing home over (5)

Yesterday's solution 29,013

B	A	T	O	N	R	O	U	G	E	B	U	C	K
E	O	E	N	A	O	O							
E	S	C	A	L	L	O	P	G	A	N	T	R	I
K	C	E	A	L	A	K							
E	S	A	U	G	A	R	D	E	N	F	L	A	T
E	T	A	L	T	I	G							
P	E	A	N	U	T	O	I	L	O	D	D	E	R
E	I	E	A	B	E	A							
R	A	N	G	E	E	M	P	L	A	S	T	I	C
T	H	I	E	A	S	E							
T	H	E	T	I	T	A	N	I	C	W	A	S	H
L	M	A	T	K	R	O							
B	E	W	A	I	L	A	N	T	E	R	I	O	R
T	R	I	R	I	N	S							
C	E	D	E	C	L	Y	D	E	S	D	A	L	E

Check today's answers by ringing 0905 757 0141 by midnight. Calls cost £1 per minute plus your telephone company's network access charge. SP: Spoke 0333 202 3390.

Solutions

Quick Cryptic 2772

M	L	M	S	A	T						
O	V	I	N	E	C	O	M	P	A	S	S
N	M	G	A	E	X	U					
K	N	O	A	L	L	T	H	I	E	F	
E	U	E	H	F							
Y	E	S	T	E	R	D	A	Y	B	O	O
P	I	N	S	R	L						
U	R	N	T	O	A	S	T	R	A	C	K
Z	R	R	Z	P							
Z	U	M	B	A	C	H	A	T	E	A	U
L	A	N	H	B	N	N					
E	A	R	A	C	H	E	L	I	L	A	C
K	E	R	E	Y	H						

Codeword 5311

C	U	T	I	C	L	E	S	H	R	E	W
R	R	R	X	I	E	H					
U	S	A	G	E	O	B	L	I	Q	U	E
C	M	D	T	K	U	A					
I	M	P	L	I	C	I	T	Z	E	S	T
F	A	R	R	O	W	R	A	G	T	A	G
H	R	J	N	L							
M	A	U	L	V	E	N	D	E	T	T	A
A	B	P	T	O	R	D					
J	E	A	L	O	U	S	O	V	O	I	D
O	R	U	A	R	U	E					
R	O	B	O	T	M	O	I	S	T	E	N

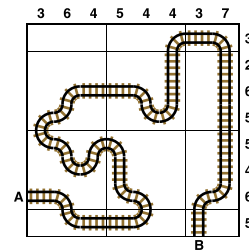
Kakuro 3810

7	4	2	1			1	3			
9	8	7	3			1	8	9	2	
		9	7	8	2	6		9	3	
6	1		6	9		7	9	5	1	
9	6	4		4	1		6	3		
7	1		7	3		8	4	9		
7	3	2	4		6	8		1	8	
9	8		6	8	2	1	9			
	5	9	1	4			2	6	1	3
		7	2			9	8	5	7	

Sudoku 15,201

7	8	6	1	3	5	2	9	4
2	1	3	9	4	8	6	7	5
5	4	9	7	2	6	8	3	1
9	6	4	3	7	1	5	8	2
1	7	8	2	5	4	9	6	3
3	2	5	8	6	9	1	4	7
6	3	1	5	9	7	4	2	8
8	9	2	4	1	3	7	5	6
4	5	7	6	8	2	3	1	9

Train Tracks 2339



Sudoku 15,202

8	9	2	1	3	6	5	4	7
4	6	3	7	2	5	9	8	1
1	7	5	4	8	9	6	2	3
9	5	4	6	7	2	1	3	8
7	8	6	3	1	4	2	5	9
2	3	1	5	9	8	4	7	6
6	2	7	8	4	1	3	9	5
5	4	8	9	6	3	7	1	2
3	1	9	2	5	7	8	6	4

Cell Blocks 5194

		12		2	
			3	2	6
2			3		
				4	3
		5			
	5				2

Set Square 3813

3	x	4	+	7
+		÷		-
8	x	2	+	1
+		+		-
6	+	9	x	5

Lexica 7635

S				C	
W	I	Z	A	R	D
I				N	
M	A	R	V	E	L
				A	
B	O	S	S		

Sudoku 15,203

4	2	6	8	7	9	1	3	5
5	8	1	6	2	3	4	7	9
3	9	7	5	4	1	2	6	8
8	5	2	1	9	6	3	4	7
7	1	9	2	3	4	8	5	6
6	3	4	7	8	5	9	2	1
2	4	5	9	1	7	6	8	3
1	7	8	3	6	2	5	9	4
9	6	3	4	5	8	7	1	2

Futoshiki 4851

1	4	5	2	<	3
			∇		
3	5	2	1	4	
			∧		
4	>	2	1	3	5
			∇		
5	1	3	4	>	2
2	3	<	4	5	1

KenKen 6303

450x	1-		11+	2	6	
5	3	4	1	2	6	
3	5	6	2	1	4	
2-	2	4	3	5	6	1
11+	4	1	5	6	3	2
6	2	1	3	4	5	
5-	1	6	2	4	5	3

Lexica 7636

			H			C		
	T	R	I	A	L			
	O		D		E			
				U	N	D	E	R
				G		E		I
C	H	I	N			C		

Today's solutions

Killer 9660

5	3	4	2	7	8	6	1	9
6	9	8	1	4	3	5	2	7
2	7	1	9	6	5	8	4	3
7	2	3	8	5	6	4	9	1
9	1	5	7	2	4	3	8	6
4	8	6	3	1	9	2	7	5
8	6	2	5	9	1	7	3	4
3	5	9	4	8	7	1	6	2
1	4	7	6	3	2	9	5	8

Killer 9661

4	3	7	1	2	9	5	6	8
2	6	1	8	4	5	7	9	3
9	5	8	6	7	3	4	2	1
1	4	9	7	6	8	2	3	5
5	8	2	9	3	1	6	4	7
6	7	3	4	5	2	8	1	9
3	9	6	5	8	4	1	7	2
8	1	4	2	9	7	3	5	6
7	2	5	3	1	6	9	8	4

Cryptic Quintagram

- 1 Phew
- 2 Truce
- 3 Hectare
- 4 Paragon
- 5 Partridge

Suko 4213

3	6	4
12	20	
1	2	8
15	24	
7	5	9

Brain Trainer

- Easy 5
- Medium 638
- Harder 5,309

Word watch

Ambace (b) The lowest possible throw at dice (*Chambers*)

Dimidiate (c) Divided into halves (*Collins*)

Tilleul (b) A pale yellowish-green colour (*OED*)

Chess – Winning Move

After 1 ... Nxf4+ 2 gxf4 Rxf4 Black's threats (mainly 3 ... Qg5+) are overwhelming, eg 3 Qh3 Qg5+ 4 Kh2 Rh4 with a decisive material gain

Samurai medium

Fill each grid so that every column, every row and every 3x3 box contains the digits 1 to 9. Where the puzzles overlap, the rows and columns do not go beyond their usual length.

	2							
5			8					6
	7	3	5	1				4
				5		8		
		4	3	8		6	9	
	8	1	2					5
		5	9		2			
9		8						1
				8				

4	2	5					6	
	9	3					5	2
	7		9					4
2		6	8	1				
			3	4	2			
1			7	2	9			
9								7
	5			7				
					1	3		9

				5	2			
		1		7			5	6
						8	2	

	2		9	8				3			5						
				2			9				6			4	2		
	8							2				2	4	5			
		6	1	5				7			8		2	7	4		
		2	4	9								4	9	7	5	8	
			8	2	1	3						6	4				
	6				4			7									
	7	1				2	5							8	1	9	5
	3				8	4		9									6

Futoshiki

Fill the blank squares so that every row and column contains each of the numbers 1 to 5 once only. The symbols between the squares indicate whether a number is larger ($>$) or smaller ($<$) than the number next to it.

<input type="text"/>	$<$	<input type="text"/>	<input type="text"/>	<input type="text"/>	<input type="text"/>	
					\vee	
<input type="text"/>	3	<input type="text"/>	<input type="text"/>	<input type="text"/>	$<$	<input type="text"/>
<input type="text"/>	$<$	<input type="text"/>	<input type="text"/>	$<$	<input type="text"/>	<input type="text"/>
<input type="text"/>	<input type="text"/>	$>$	<input type="text"/>	<input type="text"/>	<input type="text"/>	<input type="text"/>
\vee			\vee			
<input type="text"/>	<input type="text"/>	2	<input type="text"/>	<input type="text"/>	<input type="text"/>	<input type="text"/>

Train Tracks

Lay tracks to enable the train to travel from village A to village B. The numbers indicate how many sections of track go in each row and column. There are only straight sections and curved sections. The track cannot cross itself.

	8	5	4	3	2	2	3	5	
									6
									8
									4
									2
A									8
									2
									1
									1
									B

Sudoku difficult

		2		5		
	5	9	1	8	4	
		8			4	6
2	1				8	
	4	7			5	3
	3		4		8	7
		4	5	1		2
5				9		

Killer deadly

Fill the grid so that every column, every row and every 3x3 box contains the digits 1 to 9. Each set of cells joined by dotted lines must add up to the target number in its top-left corner. Within each set of cells joined by dotted lines, a digit cannot be repeated.

9	25			22		7	8	
	3		8		18		23	
18		9		11				23
17		22		4				17
		21		20	7		12	
11								
22		10		4		24		7
	5		18					

Suko

15	22	
20	24	

15	18	12
----	----	----

Place the numbers 1 to 9 in the spaces so that the number in each circle is equal to the sum of the four surrounding spaces, and each colour total is correct

Codeword

Every letter in the crossword-style grid, right, is represented by a number from 1 to 26. Each letter of the alphabet appears in the grid at least once. Use the letters already provided to work out the identity of further letters. Enter letters in the main grid and the smaller reference grid until all 26 letters of the alphabet have been accounted for. Proper nouns are excluded.

	2	10	25	8	9	2	4		25	18	21	13	
4		15				5		5		1		10	
21	20	9	24	24	18	16		25	18	18	16	D	19
18		5		10		16		18		2			12
26	9	7	22	10		26	12	17	9	4	19		
11				26		19		15		18			2
4	18	12	15	10	4		14	26	L	12	16	26	19
20		6		14		2		10					12
	22	5	U	13	9	18	3		16	3	12	9	25
1		12		2		12		18		11			9
18	17	4	3	12		8	9	16	18	10	18	16	
3		9		26		12				10			18
23	9	2	23		5	4	9	26	9	4	19		

A B C D E F G H I J K L M N O P Q R S T U V W X Y Z

1	2	3	4	5	U	6	7	8	9	10	11	12	13
14	15	16	17	18	19	20	21	22	23	24	25	26	L

Mini Sudoku

Fill in the grid so that every column, every row and every 3x2 box contains the digits 1 to 6

				2	
					5
			3		2
		2		4	6
2			1		4
	1	4	2	5	

Solutions in Monday's Times2

THE  TIMES

MindGames Thursday September 5 2024
Brain boost puzzles

Yesterday's solutions

SAMURAI

5	2	1	7	6	4	9	8	3				5	7	6	9	1	4	3	2	8
4	3	7	8	1	9	2	6	5				2	9	4	6	8	3	5	7	1
9	6	8	2	5	3	1	4	7				1	3	8	5	2	7	4	6	9
7	9	6	3	4	1	5	2	8				7	6	3	8	4	9	1	5	2
1	4	2	5	7	8	6	3	9				4	8	1	3	5	2	7	9	6
3	8	5	6	9	2	7	1	4				9	2	5	7	6	1	8	4	3
6	7	3	4	2	5	8	9	1	4	3	7	6	5	2	4	3	8	9	1	7
2	1	4	9	8	7	3	5	6	2	1	9	8	4	7	1	9	6	2	3	5
8	5	9	1	3	6	4	7	2	5	8	6	3	1	9	2	7	5	6	8	4
						5	6	3	1	2	4	7	9	8						
						2	1	9	8	7	3	4	6	5						
						7	8	4	9	6	5	2	3	1						
6	7	2	9	8	4	1	3	5	7	4	2	9	8	6	3	7	5	2	1	4
8	1	3	6	2	5	9	4	7	6	5	8	1	2	3	9	4	8	6	5	7
9	5	4	7	1	3	6	2	8	3	9	1	5	7	4	6	2	1	8	3	9
3	4	9	5	7	8	2	6	1				8	9	5	2	1	4	7	6	3
2	6	5	3	9	1	8	7	4				3	1	7	8	9	6	4	2	5
1	8	7	2	4	6	3	5	9				4	6	2	7	5	3	9	8	1
4	2	8	1	3	7	5	9	6				2	3	1	4	8	7	5	9	6
5	3	1	4	6	9	7	8	2				7	5	9	1	6	2	3	4	8
7	9	6	8	5	2	4	1	3				6	4	8	5	3	9	1	7	2

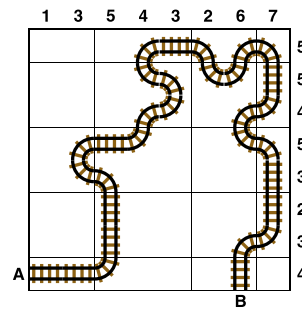
SUKO

4	1	5
13	20	
2	6	8
18	26	
7	3	9

MINI SUDOKU

4	6	1	2	5	3
3	2	5	1	6	4
1	5	6	4	3	2
2	3	4	5	1	6
6	1	2	3	4	5
5	4	3	6	2	1

TRAIN TRACKS



FUTOSHIKI

2	<	3	>	1		5	>	4
		^						
5	>	4		3		2		1
				v		v		
4		5		2		1		3
1		2		4		3		5
3	>	1		5		4		2

SUDOKU

2	6	5	9	7	3	4	1	8
3	8	4	6	5	1	9	2	7
7	1	9	8	4	2	5	3	6
4	3	8	5	6	9	2	7	1
6	9	2	1	8	7	3	4	5
1	5	7	3	2	4	6	8	9
5	7	3	4	9	8	1	6	2
8	4	6	2	1	5	7	9	3
9	2	1	7	3	6	8	5	4

KILLER

4	3	7	8	1	6	9	5	2
5	1	8	2	7	9	4	6	3
9	2	6	5	4	3	7	1	8
8	9	5	3	6	2	1	4	7
7	6	2	4	9	1	8	3	5
3	4	1	7	8	5	6	2	9
2	7	9	6	5	4	3	8	1
1	5	4	9	3	8	2	7	6
6	8	3	1	2	7	5	9	4

CODEWORD

S	C	R	U	B	B	Y	I	D	O	L
J	H	O	C	I	U					
O	V	E	R	P	A	Y	O	D	O	U
S	A	U	I	U	X	K				
T	O	P	A	Z	S	U	N	L	I	T
L	Z	H	T	D	B					
E	D	I	B	L	E	M	E	T	E	O
D	N	I	S	R	O					
W	H	I	N	G	E	A	T	T	I	C
S	I	G	Q	C	E	A				
L	A	B	E	L	U	T	T	E	R	E
A	I	Y	I	S	E					
M	O	T	H	U	N	I	F	I	E	D