

Sudoku Mild No 14,970

				6	5			
2	5	9					8	
		7			8	4		2
		6	5	3				1
		4	7	8				3
		3			1	9		5
7	4	1					6	
				2	6			

Fiendish No 14,971 **Super fiendish No 14,972**

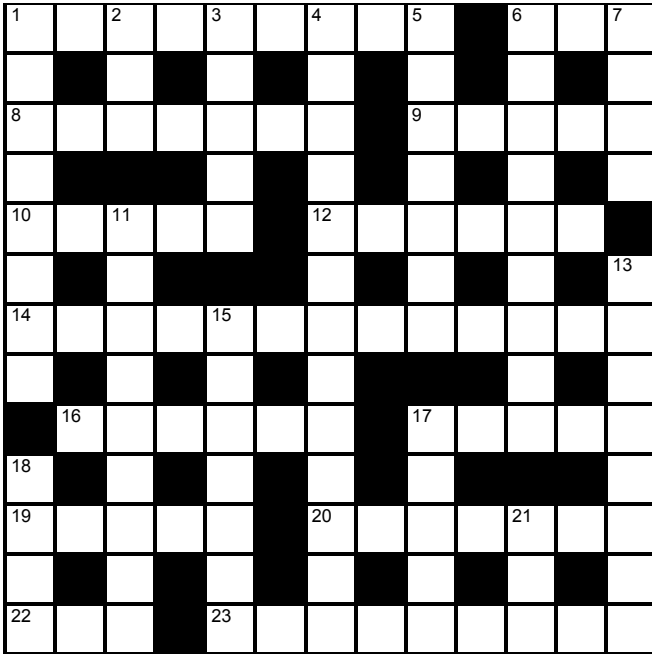
9								2
		6				1		
		2				7		
		7	4		1	3		
				3				
		8	2		9	4		
5			3	9	8			1
	3			2			6	
	2						8	

		5				1		
						5		7
	1			6	5			3
	6	1		3				5
8				1				6
5				2		3	9	
2			7	9			1	
4		6						
		8				6		

© PIZZLER MEDIA

Cluelines Stuck on Sudoku, Killer or KenKen? Call 0901 293 6263 before midnight to receive four clues for any of today's puzzles. Calls cost £1 plus your telephone company's network access charge. SP: Spoke, 0333 202 3390 (Mon-Fri 9am-5.30pm).

The Times Quick Cryptic No 2695 by Jalna



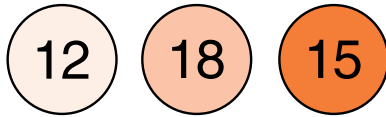
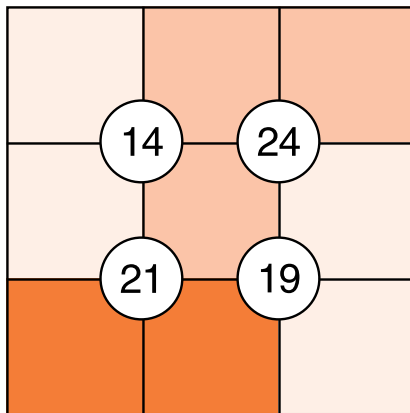
Across

- 1 Change one's view using no decorum, possibly (4,5)
- 6 Total amounts you claim at the end (3)
- 8 Vegetable from standard crop (7)
- 9 Protection, for example, accepted by Mafiosi from time to time (5)
- 10 Call bringing in working companion (5)
- 12 Additional bits of old refuse cut back by 20 per cent (6)
- 14 Price reduction newly introduced as benefit, finally (5,8)
- 16 Undercover soldiers in splinter group (6)
- 17 Suggestion read out for people waiting (5)
- 19 Intend to go round Michigan and somewhere in Florida (5)
- 20 Coffee maker in pub is totally abandoned to begin with (7)
- 22 Duke featured in old English verse (3)
- 23 Fruit is good to use again (9)

Down

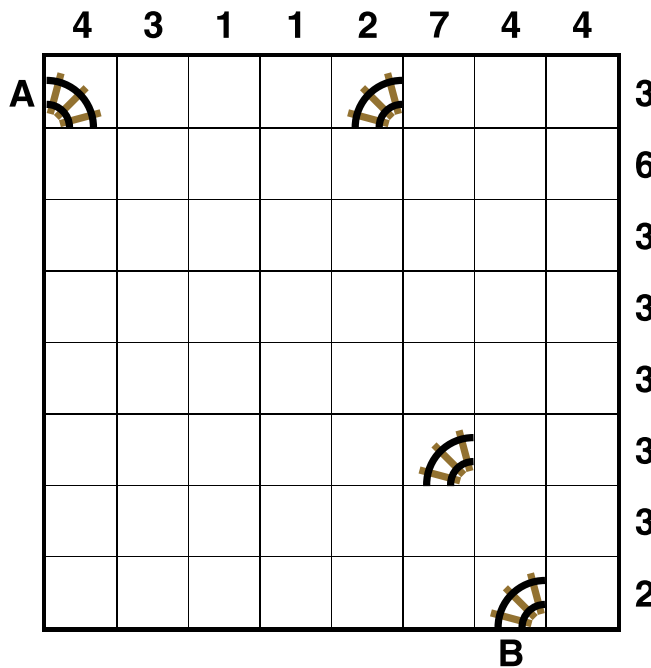
- 1 Volume limit placed on a large town (8)
- 2 Thrust upwards and do damage (3)
- 3 Sprinted extremely gracefully, having long legs (5)
- 4 Variable, strangely abrupt decline (13)
- 5 Radical doctor in charge of taking all scientific tests at first (7)
- 6 Distinctive, oddly stingy character (9)
- 7 Mother and son have hot potatoes (4)
- 11 Typically, one circles a grave uneasily (2,7)
- 13 Cheapest seats always once included in part of journey (8)
- 15 Making money from scholarship, but not initially (7)
- 17 Religious text starts to question unusual rationales about Neo-Christianity (5)
- 18 Medical officer supports morning rounds (4)
- 21 Special area where you may go to relax (3)

Suko No 4135



Place the numbers 1 to 9 in the spaces so that the number in each circle is equal to the sum of the four surrounding spaces, and each colour total is correct

Train Tracks No 2263



Lay tracks to enable the train to travel from village A to village B. The numbers indicate how many sections of track go in each row and column. There are only straight sections and curved sections. The track cannot cross itself.

Word watch

David Parfitt

Gerontomorphic

- a Of nouns formed from verbs
- b Eroded by frequent rotation
- c Of mature male characteristics

Fritch

- a To make arrows
- b To move nervously to and fro
- c A side of pork salted and cured

Jujube

- a A magical incantation
- b A fearsome mythical bird
- c A sweet of flavoured gelatine

Tetonor Fiendish No 472

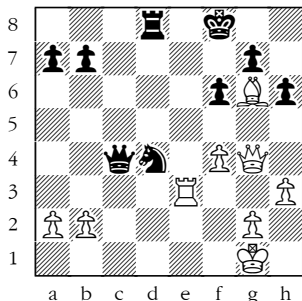
93	34	208	30
33	270	29	216
280	25	154	43
31	156	32	150

			8	12	13	14	18	26		
--	--	--	---	----	----	----	----	----	--	--

When complete, the strip below the grid can be split into eight pairs of numbers. Adding the numbers in a pair gives one of the 16 numbers in the grid. Multiplying them gives a different number in the grid. For example, a 4 and 6 in the strip could be paired to make 10 (4+6) and 24 (4x6) in the grid. Enter each sum below the corresponding number in the grid. The blanks in the strip must be deduced, bearing in mind the numbers are listed in ascending order.

The next Tetonor puzzle will appear on Tuesday

Winning Move



White to play. This position is from Mahdavi-Urbina Perez, Titled Tuesday, chess.com 2024.

As checkmate ends the game in chess, king safety is always a key consideration. White's king is, for the moment at least, secure. The same cannot be said of the black king, which is uncomfortably placed on f8, perilously close to the white forces. How did White quickly exploit his opponent's vulnerable monarch?

Codeword No 5234

2		20	9	9	24		22	2	14	14		13	
13	3	11			11			10			11	18	4
2		1		6	1	8	9	5			21		2
10	6	17	9		18		26		19	20	2	24	
3		11		3	11	18	1	4			6		3
	17	2	3	6		24		6	17	17	5		
			2	1	22	11	1	1	5				
	3	11	3	11		19		4	6	10	1		
4		4		20	6	6	22	7		2			15
9	11	4	7		16		10		9	21	9	6	
12		2		13	2	19	11	10		10			10
18	9	1			11		23			18	20	25	
22		6	8	18	20		6	3	18	22			5

A B C D E F G H I J K L M N O P Q R S T U V W X Y Z

1	2	3	4	5	6	7	8	9	10	11	12	13
14	15	16	17	18	19	20	21	22	23	24	25	26

Every letter in this crossword-style grid is represented by a number from 1 to 26. Each letter of the alphabet appears in the grid at least once. Use the letters already provided to work out the identity of further letters. Enter letters in the main grid and the smaller reference grid until all 26 letters of the alphabet have been accounted for. Proper nouns are excluded. *Yesterday's solution, right*

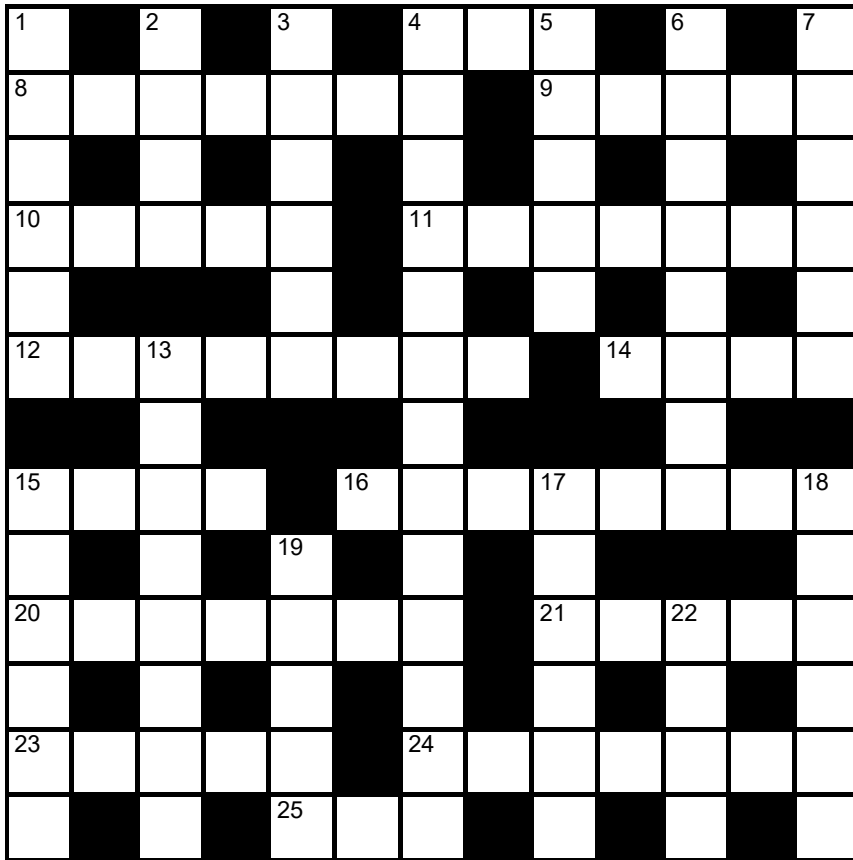
Cluelines Stuck on Codeword? To receive 4 random clues call 0901 293 6262 or text TIMECODE to 64343. Calls cost £1 plus your telephone company's network access charge. Texts cost £1 plus your standard network charge. For the full solution call 0905 757 0142. Calls cost £1 per minute plus your telephone company's network access charge. SP: Spoke, 0333 202 3390 (Mon-Fri, 9am-5.30pm).

Lexica Easy No 7455 Hard No 7456

...	E	C	N	I	●	W	Y	●	U	N	I	O	...
W							●	I							S
...						
E							M	P							U
...						
●							O	C							E
...						
S							A	R							H
...						
T							M	U							G
...						
P							H	T							Y
...						
...	H	A	O	G	R	S	T	O	R	E	N	R	...

Slide the letters either horizontally or vertically back into the grid to produce a completed crossword. Letters are allowed to slide over other letters

times2 Crossword No 9550



Across

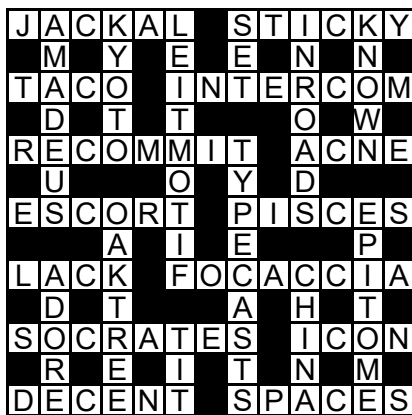
- 4 Feline (3)
- 8 Organ of digestion (7)
- 9 Succulent plant (5)
- 10 School punishment (5)
- 11 Laboratory tube used to convey or measure liquids (7)
- 12 16th-century French writer (8)
- 14 Skin growth (4)
- 15 Draw in (air or liquid, eg) (4)

- 16 Layer through which a hatchling has broken (8)
- 20 Liquor (7)
- 21 Respond (5)
- 23 Stop, halt (5)
- 24 Colleague, associate (7)
- 25 Pan for stir-frying (3)

Down

- 1 Historical worker tending horses stabled at an inn (6)
- 2 Biblical Evangelist (4)
- 3 Bone of the ankle or heel (6)
- 4 Base for splitting logs (8,5)
- 5 Brownish-grey colour (5)
- 6 Clothing industry (3,5)
- 7 Warm up again (6)
- 13 Insolent language, lip (8)
- 15 Grab (6)
- 17 Steal (apples) (6)
- 18 Soapy froth (6)
- 19 Tiny mouselike animal (5)
- 22 Gelatinous substance derived from seaweed (4)

Solution to Crossword 9549



Need help with today's puzzle? Call 0905 757 0143 to check the answers. Calls cost £1 per minute plus your telephone company's network access charge. SP: Spoke, 0333 202 3390 (Mon-Fri 9am-5.30pm).

KenKen Difficult No 6226

24×	8+		12×	6+	
		5			2÷
8+			1-	5-	
1-		2÷			3-
10×			18×		
	6×			9+	

All the digits 1 to 6 must appear in every row and column. In each thick-line "block", the target number in the top left-hand corner is calculated from the digits in all the cells in the block, using the operation indicated by the symbol.

© 2010 KENKEN PUZZLE & THE MEXICO, DIST. BY U.S. INC. WWW.KENKEN.COM

Futoshiki No 4774

<input type="text"/>	>	<input type="text"/>	<input type="text"/>	<input type="text"/>	<input type="text"/>
<input type="text"/>		<input type="text"/>	∨	<input type="text"/>	<input type="text"/>
<input type="text"/>		<input type="text"/>	∧	<input type="text"/>	<input type="text"/>
<input type="text"/>	∨	<input type="text"/>		<input type="text"/>	∧
<input type="text"/>		4	<	>	<input type="text"/>
<input type="text"/>		<input type="text"/>	>	<input type="text"/>	<input type="text"/>
<input type="text"/>	∧	<input type="text"/>		<input type="text"/>	<input type="text"/>
<input type="text"/>		<input type="text"/>		2	<input type="text"/>

Fill the blank squares so that every row and column contains each of the numbers 1 to 5 once only. The symbols between the squares indicate whether a number is larger (>) or smaller (<) than the number next to it.

Kakuro No 3733

	8	16	39		4	22		7	33	27
13				6				10		
				23				7		
37								7		
	6	35			19				13	
25					3				38	
	7			21						12
	31			23				23		
	14							20		
12			16					28		
			23					16		
32							4			17
	12			30						16
24				9				21		

Fill the grid using the numbers 1 to 9 only. The numbers in each horizontal or vertical run of white squares add up to the total in the triangle to its left or above it. The same number may occur more than once in a row or column, but not within the same run of white squares.

© PUZZLER MEDIA

Quintagram®

Solve all five cryptic clues using each letter underneath once only

1 Jack is with a French love goddess (4)

— — — —

2 State just had HQ for regular visits (4)

— — — —

3 Mother and girl do awful bloomer (8)

— — — — — — — —

4 I don't know initially which ring road is a means of access (8)

— — — — — — — —

5 A bird going after cat? One's for the chop! (8)

— — — — — — — —

A	A	A	A	A	D	D	G
H	H	I	J	K	L	M	M
N	O	O	O	O	P	R	R
S	S	T	T	U	U	W	W

Brain Trainer

EASY	48	÷ 4	50% OF IT	x 5	1/3 OF IT	x 2	+ 3	- 11	25% OF IT	+ 8	ANSWER	
MEDIUM	84	+ 5/6 OF IT	+ 22	5/8 OF IT	x 3	+ 87	x 2	5/6 OF IT	- 57	x 2	ANSWER	
HARDER	166	50% OF IT	+ 248	x 7	+ 785	x 2	+ 24	75% OF IT	+ 21	x 2	ANSWER	

Polygon



From these letters, make words of four or more letters, always including the central letter. Answers must be in the *Concise Oxford Dictionary*, excluding capitalised words, plurals, conjugated verbs (past tense etc), adverbs ending in LY, comparatives and superlatives. **How you rate** 14 words, average; 19, good; 24, very good; 30, excellent

Yesterday's answers

appeal, **applause**, apple, apse, lapse, lase, leap, lues, pale, palea, papule, pause, peal, plea, pule, pulse, sale, salep, seal, sepal, slue, spae, spue, supple

Cell Blocks No 5117

			3		2
				12	
	4				3
7		5			2
		5			
				6	

Divide the grid into square or rectangular blocks, each containing one digit only. Every block must contain the number of cells indicated by the digit inside it.

Set Square No 3736

	x	-	7	= 20	
+		x		+	
	÷		x	= 20	
+		÷		÷	
	x		x	4 = 24	
=	12	=	3	=	3

Enter each of the numbers from 1 to 9 in the grid, so that the six sums work. We've placed two numbers to get you started. Each sum should be calculated left to right or top to bottom.

Please note, BODMAS does not apply

Killer Gentle No 9506

12		10		12		5		23
16	7		3		11			
		22	17		4		7	13
4			13	11				
13		13		5				16
6		15	4		15			
9			12		17	9	16	4
13			12					
	16			4		16		

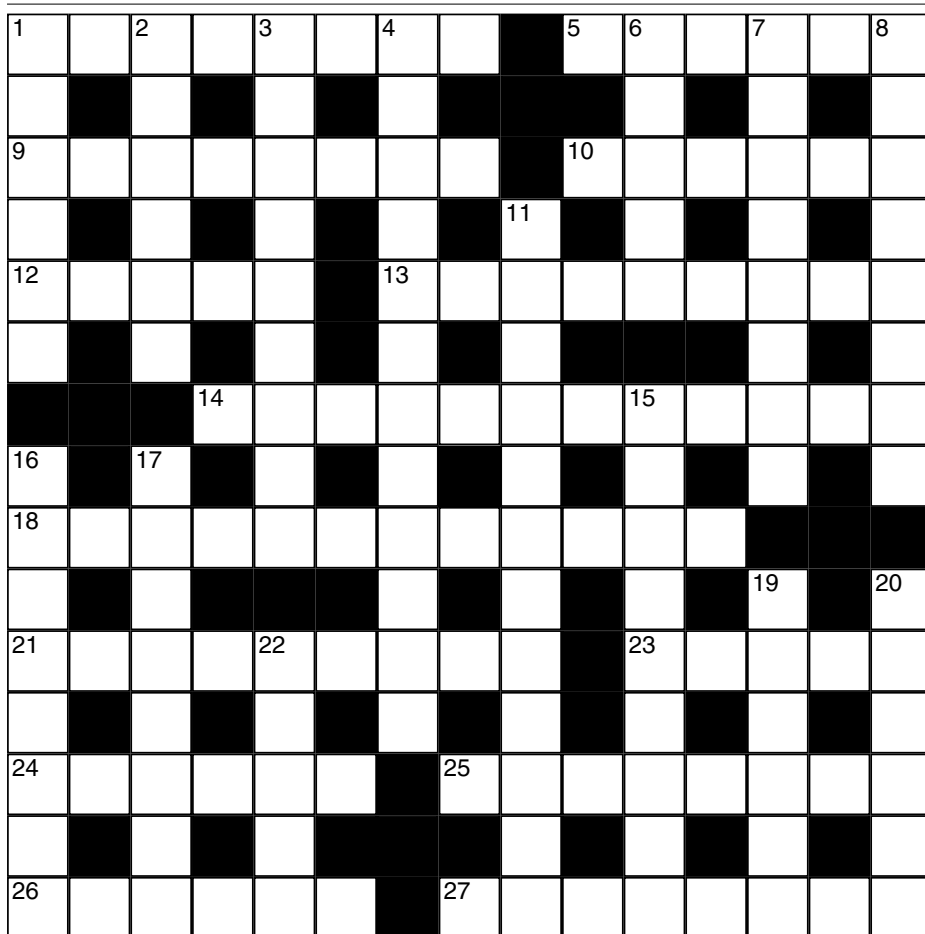
Killer Tough No 9507

22		13		8		7		30
		17		19				
18			17	3		5		
	12			12			11	5
			28	22				
8				22		19		13
	20	20						
			18		5	13		
						18		

As with standard Sudoku, fill the grid so that every column, every row and every 3x3 box contains the digits 1 to 9. Each set of cells joined by dotted lines must add up to the target number in its top-left corner. Within each set of cells joined by dotted lines, a digit cannot be repeated.

Cluelines Stuck on Sudoku, Killer or KenKen? Call 0901 293 6263 before midnight to receive four clues for any of today's puzzles. Calls cost £1 plus your telephone company's network access charge. SP: Spoke, 0333 202 3390 (Mon-Fri 9am-5.30pm).

Times Crossword 28,936



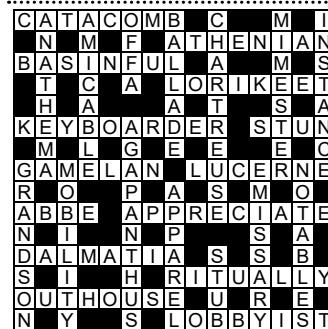
ACROSS

- 1 Rejects those who've acted in Fringe version of *Friends*? (4-4)
- 5 Flap observed to lie the wrong way (6)
- 9 Everything we can teach about religion, perhaps, is sound (3,5)
- 10 Not just tasteful stuff in this display? (6)
- 12 Pounds in the bank for one to do bathroom renovation? (5)
- 13 A large London college had resistance, offering places to everyone? (3-6)
- 14 Demanding car rental? (4,2,6)
- 18 Freedom perhaps to explore the factory's routine (3-2-3-4)
- 21 Banned from working in Bedford (9)
- 23 On deck, maybe, stop sweeping after area (5)
- 24 Weaken, slowing down following a series of races (6)
- 25 Shiny silver paper discarded? (8)
- 26 Again tried to pass back small weapons (6)
- 27 Original voting system, first popular with electorate, primarily (8)

DOWN

- 1 Time on board yacht wasted gossiping (6)
- 2 Upset Argyle lost — not entirely just! (6)
- 3 Possibly Dutch people we envy? (5,4)
- 4 Poorly from lead, one regularly turning back to doctor for solution? (12)
- 6 Empty tin can we are consistently failing to open (5)
- 7 Just after one on Thursdays, visiting temple (4,4)
- 8 Severely punished, did well to hold firm (8)
- 11 Girl or bloke, a German store supervisor (5,7)
- 15 Blues all I played, or music for rockers? (9)
- 16 Director having drawn winning card stops (8)
- 17 They are not obliged to reduce local golf charges (8)
- 19 Cocktail one's knocked back: short to follow (3,3)
- 20 Sun, perhaps, going down on a day of celebration fast? (6)
- 22 One day out of drink so reserved more? (5)

Yesterday's solution 28,935



Check today's answers by ringing 0905 757 0141 by midnight. Calls cost £1 per minute plus your telephone company's network access charge. SP: Spoke 0333 202 3390.

Solutions

Quick Cryptic 2694

M	A	T	C	H	R	H	U	B	A	R	B
O	O	A	I	S	R	E	A				
A	D	O	R	I	N	G	E	X	C	E	L
N	L	L	G								
			A	S	C	E	R	T	A	I	N
I	S	T	D	A	V	E					
N	O	T	I	O	N	A	N	N	E	X	E
F	U	N	H	G	S	R					
O	N	T	H	E	L	E	V	E	L		
R	T		L	R	S	S					
M	Y	E	E		M	A	I	N	T	O	P
E	R	X	E	N	A	A					
D	E	S	C	E	N	T	E	M	B	E	R

Codeword 5233

P	O	L	Y	P	H	A	S	S	O	C	K
R	U	I	A	E	N	I					
A	N	X	I	E	T		G	R	E	E	N
N	U	T					M				
C	U	R	T	A	I	L	E	A	S	E	L
E	I						U	N	T		Y
A	U	U	A	V	A	S					
B	A	S	I	S	R	E	Q	U	E	S	T
L			T				U	P			I
O	K	A	P	I	B	L	A	Z	I	N	G
O	W	F	U	S	P	M					
M	O	N	E	Y	E	D	H	Y	E	N	A

Kakuro 3732

9	7	3	1	2	1	3		
7	6	1	9	3	5	4	2	1
9	8	3	7	5	2	1	9	7
2	4	1	8	9				
5	6	9	8	4	4	2		
7	9	6	2	8	4	3		
5	3	1	6	3				
3	1	1	2	7	9	8	6	5
1	2	3	6	4	9	9	8	7
2	4	1	1	3	7	9		

Sudoku 14,967

4	9	1	3	6	7	5	2	8
8	5	6	1	2	4	3	7	9
7	3	2	9	5	8	1	4	6
3	7	5	8	4	1	9	6	2
1	2	9	7	3	6	4	8	5
6	8	4	5	9	2	7	3	1
5	4	8	2	1	3	6	9	7
9	6	7	4	8	5	2	1	3
2	1	3	6	7	9	8	5	4

Sudoku 14,968

1	9	6	4	2	8	7	5	3
7	3	4	1	5	6	2	8	9
5	2	8	3	9	7	1	6	4
4	1	9	8	6	5	3	2	7
3	8	7	2	4	9	5	1	6
6	5	2	7	3	1	9	4	8
2	4	1	9	8	3	6	7	5
8	6	3	5	7	2	4	9	1
9	7	5	6	1	4	8	3	2

Cell Blocks 5116

		5			
3					
	2	4	4		
	2			8	
6	2				
	5				
3				3	2

Set Square 3735

4	+	5	×	2
×		+		-
8	-	9	+	3
-		-		+
7	-	1	+	6

Lexica 7453

A	L	T	A	R	
R		A			
C	A	N	O	P	Y
				O	
P	I	S	T	O	N
				L	

Sudoku 14,969

4	8	2	6	3	1	5	9	7
9	3	5	7	2	4	8	1	6
6	1	7	5	8	9	3	4	2
1	2	9	8	6	5	4	7	3
5	7	8	1	4	3	6	2	9
3	6	4	9	7	2	1	8	5
7	4	1	3	9	6	2	5	8
8	5	3	2	1	7	9	6	4
2	9	6	4	5	8	7	3	1

Futoshiki 4773

5	2	4	1	3	
3	1	5	4	2	
4	>	3	1	2	5
2	4	3	5	1	
1	5	2	<	3	4

KenKen 6225

4	1	5	3	6	2
5	2	1	4	3	6
3	5	6	2	1	4
6	3	4	5	2	1
1	4	2	6	5	3
2	6	3	1	4	5

Lexica 7454

		L	O	S	E
C	O	O			N
O		C			D
M	O	U	T	H	
E		S		E	
		T	U	R	N

Today's solutions

Killer 9504

3	2	7	8	4	9	6	5	1
4	8	6	7	1	5	3	2	9
5	1	9	2	6	3	4	8	7
8	7	5	1	9	6	2	4	3
9	3	4	5	7	2	8	1	6
1	6	2	3	8	4	9	7	5
6	9	1	4	2	7	5	3	8
2	5	8	9	3	1	7	6	4
7	4	3	6	5	8	1	9	2

Killer 9505

9	7	3	1	5	6	2	4	8
8	4	5	9	3	2	6	1	7
2	6	1	8	7	4	3	9	5
7	5	2	3	4	1	9	8	6
1	9	8	5	6	7	4	3	2
6	3	4	2	9	8	5	7	1
5	2	7	4	8	9	1	6	3
4	1	6	7	2	3	8	5	9
3	8	9	6	1	5	7	2	4

Cryptic Quintagram

- 1 Juno
- 2 Utah
- 3 Marigold
- 4 Password
- 5 Tomahawk

Suko 4135

3	5	9
14	24	
2	4	6
21	19	
7	8	1

Brain Trainer

- Easy 11
- Medium 1,276
- Harder 9,384

Word watch

- Gerontomorphic** (c) Of mature male characteristics (*Collins*)
- Flitch** (c) A side of pork salted and cured (*Chambers*)
- Jujube** (c) A sweet of flavoured gelatine (*OED*)

Chess – Winning Move

1 Qd7! has the main point that 1 ... Rxd7 2 Re8 is mate. Furthermore Black has no decent defence against the rook or queen coming to e8. He tried 1 ... Ne6 but 2 Qxd8+! Nxd8 3 Re8 was mate

Samurai medium

Fill each grid so that every column, every row and every 3x3 box contains the digits 1 to 9. Where the puzzles overlap, the rows and columns do not go beyond their usual length.

9			7						1		
			8			6 7 9			8 2 6 3		
6			1			4			2 4 9 5		
1						5			4 2 7		
8			7			5			7 5		
			3 1			2			7 9		
			6 4			8			5 3 9		
8			3 1						8 7 8		
4			8						8 2 6 8 9		
			1 3						5		
			9 7						6 3		
			8						9 2		
9 2			5			7 5			2 5		
4						1 4			8 5 1		
3						2 3 1			8 1 9		
9 2									8 6 5		
			4			1			9 5 3 8		
			7 9			5			5 1		
5			6 9			8			7 4 6		
3 8			7 4						8 2 3 5 1 3		
			6								

Futoshiki

Fill the blank squares so that every row and column contains each of the numbers 1 to 5 once only. The symbols between the squares indicate whether a number is larger (>) or smaller (<) than the number next to it.

		>			
			2		
	>		<		2
	v		<		
		v		<	
	4		<		

Train Tracks

Lay tracks to enable the train to travel from village A to village B. The numbers indicate how many sections of track go in each row and column. There are only straight sections and curved sections. The track cannot cross itself.

			1	3	3	5	7	3	2	2
			4							4
			6							4
			4							4
			4							4
			1							1
			2							2
			1							1
			2							4
			1							4
			4							4

A B

Sudoku difficult

	8		6	6	
	3	7		2	1 5
	5				2
		4 3			
	6 7	8 9		5	
6		1 3			
		2	8	9 3	
	9				

Killer deadly

Fill the grid so that every column, every row and every 3x3 box contains the digits 1 to 9. Each set of cells joined by dotted lines must add up to the target number in its top-left corner. Within each set of cells joined by dotted lines, a digit cannot be repeated.

25		19	17	20				
				41				
	9			17				
10		22	18			15		
				7		19		
	21	24		9				
		9				20		
9	15		22			8		16
				13				

Suko

14	15	
19	20	

11	14	20
----	----	----

Place the numbers 1 to 9 in the spaces so that the number in each circle is equal to the sum of the four surrounding spaces, and each colour total is correct

Codeword

Every letter in the crossword-style grid, right, is represented by a number from 1 to 26. Each letter of the alphabet appears in the grid at least once. Use the letters already provided to work out the identity of further letters. Enter letters in the main grid and the smaller reference grid until all 26 letters of the alphabet have been accounted for. Proper nouns are excluded.

17	12	20	2	23	7	7		18	8	7	12	1
19		1		22		23		19		13		4
24	23	19	7	10		15	2	8	13	14	23	24
6		7		12		12		22		19		16
19	7	7	14	16	8	22	3		23	2	7	23
2				20		5		15		12		
26	23	1	22	23	2		15	4	19	1	3	23
		12		5		2		19				23
6	4	12	16		15	12	16	21	12	7	23	1
8		9		6		2		2		23		8
22	23	10	20	19	2	2		19	2	8	18	23
15		12		2		12		8		11		7
23	25	21	23	2		21	14	22	3	23	22	10

A B C D E F G H I J K L M N O P Q R S T U V W X Y Z

1	2	3	4	5	6	7	8	9	10	11	12	13
	L										O	
14	15	16	17	18	19	20	21	22	23	24	25	26

Mini Sudoku

Fill in the grid so that every column, every row and every 3x2 box contains the digits 1 to 6

		6	5		
		4	2		
	4			5	
6		2	4		1
	2			6	
		5	1		

Solutions in Monday's Times2

THE  TIMES

MindGames Thursday June 6 2024
Brain boost puzzles

Yesterday's solutions

SAMURAI

1	2	3	7	4	5	6	8	9	9	8	4	2	1	5	7	6	3			
7	5	4	8	9	6	3	2	1	1	7	2	3	9	6	4	5	8			
6	9	8	3	2	1	4	5	7	5	6	3	8	7	4	2	1	9			
5	3	7	9	1	8	2	6	4	7	3	9	6	5	1	8	2	4			
8	1	2	6	7	4	5	9	3	6	4	8	7	2	9	5	3	1			
9	4	6	5	3	2	1	7	8	2	1	5	4	8	3	6	9	7			
3	6	5	1	8	9	7	4	2	5	3	6	8	9	1	5	6	7	3	4	2
2	7	9	4	5	3	8	1	6	9	2	4	3	5	7	1	4	2	9	8	6
4	8	1	2	6	7	9	3	5	1	7	8	4	2	6	9	3	8	1	7	5
						5	8	3	6	9	1	2	7	4						
						2	9	1	7	4	3	5	6	8						
						6	7	4	2	8	5	9	1	3						
3	5	6	9	4	7	1	2	8	3	5	7	6	4	9	5	3	8	1	2	7
4	2	9	1	6	8	3	5	7	4	6	9	1	8	2	4	7	9	5	6	3
1	8	7	2	5	3	4	6	9	8	1	2	7	3	5	2	1	6	8	4	9
8	9	4	5	7	6	2	3	1				3	5	6	7	9	1	2	8	4
2	3	5	4	8	1	9	7	6				8	2	7	6	5	4	9	3	1
6	7	1	3	9	2	5	8	4				4	9	1	3	8	2	6	7	5
7	1	2	6	3	4	8	9	5				5	6	4	1	2	3	7	9	8
9	6	3	8	1	5	7	4	2				9	7	3	8	6	5	4	1	2
5	4	8	7	2	9	6	1	3				2	1	8	9	4	7	3	5	6

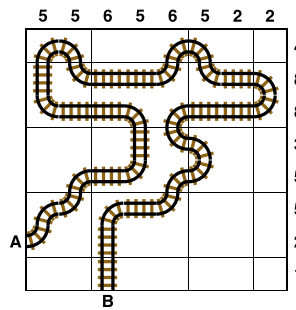
SUKO

3	1	6
4	2	7
8	5	9

MINI SUDOKU

3	4	1	5	6	2
6	5	2	1	3	4
4	6	5	2	1	3
2	1	3	4	5	6
5	3	4	6	2	1
1	2	6	3	4	5

TRAIN TRACKS



FUTOSHIKI

4	1	3	5	>	2	
			v			
5	4	2	>	1	3	
1	3	5	2	4		
3	2	1	4	5		
2	5	>	4	3	>	1

SUDOKU

7	8	6	2	3	9	1	5	4
3	1	4	8	6	5	7	2	9
5	2	9	4	7	1	3	6	8
4	3	1	5	8	2	9	7	6
2	9	7	1	4	6	8	3	5
8	6	5	7	9	3	4	1	2
1	5	3	9	2	4	6	8	7
6	4	8	3	5	7	2	9	1
9	7	2	6	1	8	5	4	3

KILLER

7	8	4	1	2	9	5	3	6
2	5	3	4	7	6	1	9	8
9	6	1	5	3	8	4	7	2
3	4	6	2	8	5	7	1	9
1	9	5	3	6	7	2	8	4
8	2	7	9	4	1	3	6	5
6	1	8	7	5	4	9	2	3
5	3	9	6	1	2	8	4	7
4	7	2	8	9	3	6	5	1

CODEWORD

H	A	Y	S	T	A	C	K	I	D	E	A
U	I	W	R	J	I	N					
N	I	E	E	Q	I	N	O	X			
C	L	E	A	N	G	I					
H	I	D	E	O	M	N	I	V	O	R	E
		E	R	Y	P					T	
B	U	D	G	E	T	M	E	D	L	E	Y
O			L	S	R	U					
R	E	P	R	I	E	V	E	S	C	A	R
O	E	E	E	E	S	K	O				
U	N	C	I	V	I	L	I	C	I	L	
G	A	E	T	Z	E	C	A				
H	A	N	D	D	E	F	E	R	R	A	L