

Sudoku Difficult No 15,057

				1				
2			7	5			8	
		7	3					
	2		9					
							5	8
7		4			2	3	1	
	7		6			1		
5		1			9			
	4		5				2	

Fiendish No 15,058

					4			
		1	7					
	4		6	1		8		
	6		5					3
8			4			2		
4				9	1	6	8	
	8						3	
1		9			3	5		
	3		2	7				

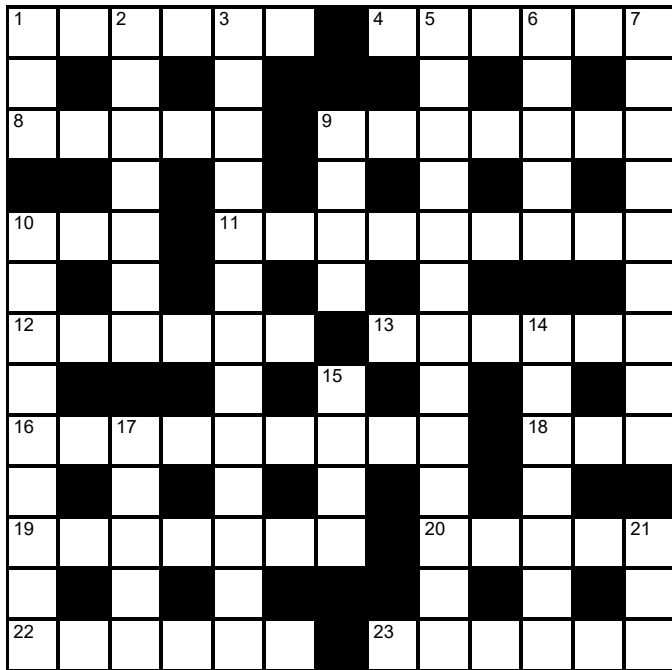
Super fiendish No 15,059

3								
			4		8			
	4	1	9					
		3	5					6
6		2						
	5				2	7	9	
					6	7	2	
2			3				9	
	7			2				3

© PIZZLER MEDIA

Cluelines Stuck on Sudoku, Killer or KenKen? Call 0901 293 6263 before midnight to receive four clues for any of today's puzzles. Calls cost £1 plus your telephone company's network access charge. SP: Spoke, 0333 202 3390 (Mon-Fri 9am-5.30pm).

The Times Quick Cryptic No 2724 by Jalna



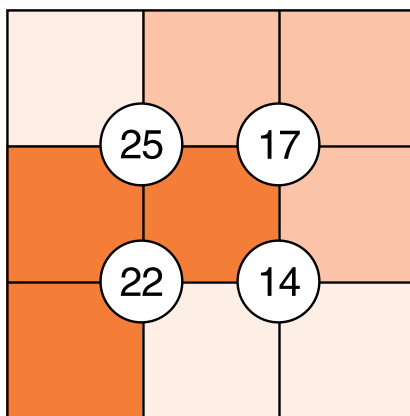
Across

- 1 Repercussions of statute introduced by current politician (6)
- 4 Predicament caused by fight beginning to escalate (6)
- 8 Don't take time away from work (5)
- 9 Starts to leap around, yell and thrash (4,3)
- 10 Adversary fooled regularly (3)
- 11 Home is horribly dire scene (9)
- 12 Trapped somewhere with a net, by the sound of it (6)
- 13 Name included in benefit agreement (6)
- 16 Water conduit snapped — it must be repaired (9)
- 18 Odd pieces of pound cake, perhaps? (3)
- 19 Moralising peer restraining every individual (7)
- 20 Cooking facility provided by most ovens (5)
- 22 Somewhat antiquated, empty oval bowl (6)
- 23 Court order ends in trouble for author (6)

Down

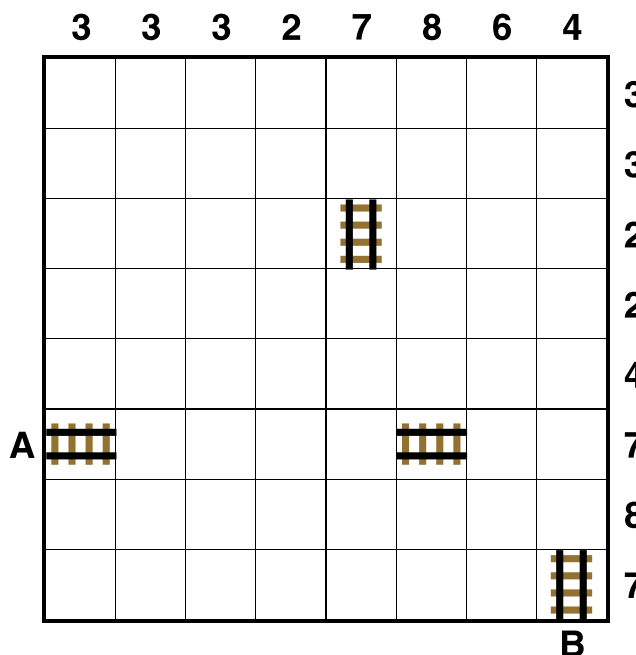
- 1 Part of pail leaking badly (3)
- 2 Thin coating put on gold table (7)
- 3 Checks altered, possibly to prepare for a new start (5,3,5)
- 5 Princesses had contrived way to get money (4,9)
- 6 A cereal crop and fruit from a tree (5)
- 7 Nurse did nursing work, as requested (9)
- 9 Luxurious, large American hotel (4)
- 10 Accepts terrible cups of tea (5,2,2)
- 14 Old story about one adventure (7)
- 15 Light, milk-based food with no topping (4)
- 17 Change the last word on front of dossier (5)
- 21 Queen and King make a mistake (3)

Suko No 4164



Place the numbers 1 to 9 in the spaces so that the number in each circle is equal to the sum of the four surrounding spaces, and each colour total is correct

Train Tracks No 2291



Lay tracks to enable the train to travel from village A to village B. The numbers indicate how many sections of track go in each row and column. There are only straight sections and curved sections. The track cannot cross itself.

Word watch
David Parfitt

Absquatulate

- a To remove scales from
- b To leave hurriedly
- c Having a compressed shape

Kilhig

- a A pole used to direct the fall of a tree
- b A habitually negative person
- c A unit of capacity equal to 16 gallons

Taraxacum

- a A level of biological classification
- b A road surfacing material
- c The dried root of a dandelion

Poker Byron Jacobs

The Small Blind

Last week's article discussed the Big Blind approach to pre-flop play and this week we will consider the Small Blind. Both Blinds are obliged to put chips in the pot before any cards are dealt. This "bet" then counts if they want to call or raise a pre-flop open from another player. So, they effectively get a discount to play. As we saw last week, in the case of the Big Blind this is a good incentive and, because it is now cheaper to play, the Big Blind is justified in calling with a wide range of hands. Does this also apply to the Small Blind?

The answer is a clear no. In comparison with the Big Blind, the Small Blind suffers from three disadvantages in this scenario.

1) Having committed only 0.5BB (compared with the Big Blind's 1BB) the Small Blind is not getting as much of a discount to play.

2) The Small Blind will be *out of position* for all post-flop betting rounds – a serious disadvantage. It is true that this drawback also applies to the Big Blind (when the Small Blind has already folded and the Big Blind decides to call). However, when the Small Blind calls, the Big Blind will also often call. Now the order of play post-flop will be: Small Blind, Big Blind, original opener. Being out of position in a multiway pot badly hurts the playability of your hand – even more so than being heads-up.

3) When the Big Blind calls an opening bet from another player

they are *closing the action*. This means there can be no further pre-flop betting so they are guaranteed to see the flop. However, when the Small Blind decides to call, the Big Blind is still in the pot. Occasionally they wake up with a premium hand and raise. Now the Small Blind has to either commit further chips to see the flop (knowing they are facing a strong holding) or abandon the pot, wasting the chips from their original call.

In summary, although calling from the Small Blind is seen frequently in low-stakes games, it can almost never be justified. The best strategy when in the Small Blind is to take a raise-or-fold approach. Furthermore, when you raise you should go big. As already discussed, you will be playing out of position so you want to make the Villain(s) pay to compete. A normal raise (in position) is about 2.5-3x the original bet. In the Small Blind you should be looking to size up to 4-5x the original bet.

When you should raise depends on the position of the original opener. Facing an early position opener (who should have a strong range), you should be very tight, maybe raising with a pair of tens or better, A-K and nothing else (even A-Q can often be folded). However, if the raise comes from a late player (who should have a much wider range) you can be far more aggressive, raising hands such as 7-7, A-10 and even speculative holdings such as J-10 suited.

Codeword No 5263

24	8	6	14	12	9	21		16	9	6	10	8
8		15		9		19		19		7		2
14	12	18	21	8		10	8	11	12	7	25	8
8		19		22		8		25		25		18
10	6	9	21	17	6	18	14		3	6	5	4
12			12		9			26		12		
25	8	21	6	4	8		7	19	5	3	12	7
		18		13		14		17				19
17	9	12	4		23	8	18	18	13	7	6	9
3		20		24		7		5		19		4
24	6	20	19	19	16	6		19	1	9	8	18
18		25		5		3		3		21		19
6	24	13	5	5		15	18	8	10	6	12	25

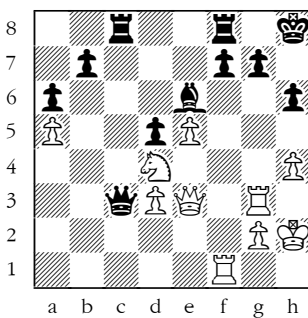
A B C D E F G H I J K L M N O P Q R S T U V W X Y Z

1	2	3	4	5	6	7	8	9	10	11	12	13
14	15	16	17	18	19	20	21	22	23	24	25	26

Every letter in this crossword-style grid is represented by a number from 1 to 26. Each letter of the alphabet appears in the grid at least once. Use the letters already provided to work out the identity of further letters. Enter letters in the main grid and the smaller reference grid until all 26 letters of the alphabet have been accounted for. Proper nouns are excluded. *Yesterday's solution, right*

Cluelines Stuck on Codeword? To receive 4 random clues call 0901 293 6262 or text TIMECODE to 64343. Calls cost £1 plus your telephone company's network access charge. Texts cost £1 plus your standard network charge. For the full solution call 0905 757 0142. Calls cost £1 per minute plus your telephone company's network access charge. SP: Spoke, 0333 202 3390 (Mon-Fri, 9am-5.30pm).

Winning Move



White to play. This position is from Ehlvest-Novikova, Titled Tuesday, chess.com 2024.

Some combinational ideas will forever be associated with specific games. In 1963, on the way to an astonishing 11-0 score in the US Championship, Bobby Fischer defeated grandmaster Pal Benko. Anyone familiar with that game will spot the tactical idea here fairly easily. How was Fischer's idea resurrected?

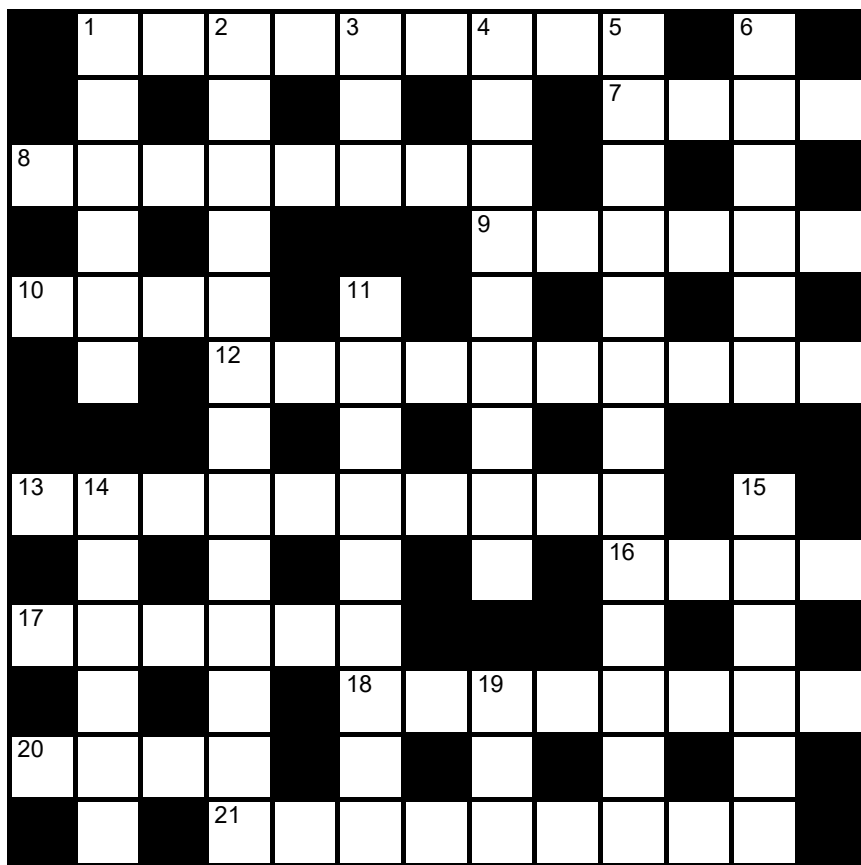
Lexica Easy No 7523

Hard No 7524

...	S	●	M	L	E	G	...	A	N	G	N	E	E	...
A														N
F														I
O														W
R														G
H														K
●														G
...	Y	C	T	U	R	●	...	M	O	E	L	●	N	...

Slide the letters either horizontally or vertically back into the grid to produce a completed crossword. Letters are allowed to slide over other letters

times2 Crossword No 9579

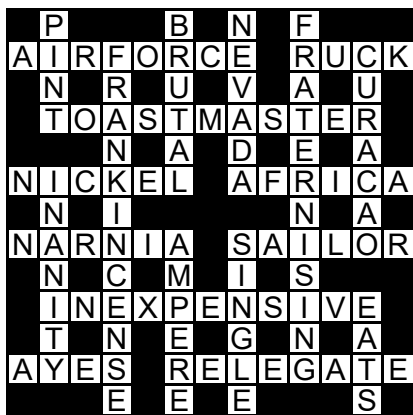


Across

- 1 Pertaining to values represented by digits (9)
- 7 Article, object (4)
- 8 Assessment or experiment giving definitive results (4,4)
- 9 Large droning insect (6)
- 10 --- out, be fully bought up (4)
- 12 Basic, fundamental (10)

- 13 Item of cutlery used for serving or measuring (10)
- 16 Citizen of Belgrade, eg (4)
- 17 Largest of the islands that constitute Japan (6)
- 18 Apprehend via the senses (8)
- 20 Periphery, side (4)
- 21 Bodily chemical involved in mood regulation (9)

Solution to Crossword 9578



Down

- 1 Pilfered, purloined (6)
- 2 Bourgeoisie (6,7)
- 3 Regret (3)
- 4 Realises, twigs (7,2)
- 5 Small central European country (13)
- 6 Chief, head (6)
- 11 Dense yellowish fog (9)
- 14 Conflicting (with) (2,4)
- 15 Highly motivated (6)
- 19 Decompose (3)

Need help with today's puzzle? Call 0905 757 0143 to check the answers. Calls cost £1 per minute plus your telephone company's network access charge. SP: Spoke, 0333 202 3390 (Mon-Fri 9am-5.30pm).

KenKen Medium No 6255

24×			4-	6	5-
30×	1-	1-		11+	
					6×
1-	15+				
	30×		1-	8+	
5-				2÷	

All the digits 1 to 6 must appear in every row and column. In each thick-line "block", the target number in the top left-hand corner is calculated from the digits in all the cells in the block, using the operation indicated by the symbol.

© 2010 KENKEN PUZZLE & TIM MEXTOY, DIST. BY UFS, INC. WWW.KENKEN.COM

Futoshiki No 4803

<input type="text"/>	<input type="text"/>	<input type="text"/>	<input type="text"/>	<input type="text"/>
∇		∇		
<input type="text"/>	<input type="text"/>	<input type="text"/>	<input type="text"/>	2
<input type="text"/>	4	<input type="text"/>	<input type="text"/>	<input type="text"/>
^				
<input type="text"/>	<input type="text"/>	<	<input type="text"/>	>
	∇			
<input type="text"/>	<input type="text"/>	<input type="text"/>	>	>

Fill the blank squares so that every row and column contains each of the numbers 1 to 5 once only. The symbols between the squares indicate whether a number is larger (>) or smaller (<) than the number next to it.

Kakuro No 3762

			4	17	11			36	7	
	26	31	7			9		4		16
24							20			
4			35				16			
26			36			14			30	32
29							6			
7						25	19			
		17		16	35	11				
37	7	23		4				14		
								14		
11				21						
	16				13					

Fill the grid using the numbers 1 to 9 only. The numbers in each horizontal or vertical run of white squares add up to the total in the triangle to its left or above it. The same number may occur more than once in a row or column, but not within the same run of white squares.

© PUZZLER MEDIA

Quintagram®

Solve all five cryptic clues using each letter underneath once only

1 Smooth and new blue clothes (4)

— — — —

2 Loose garment – maiden wears belt (5)

— — — — —

3 Beam right beside post (6)

— — — — —

4 The Times gets serious for film set in the 19th century (7)

— — — — —

5 Zany artist certain to grab queen and big stars (10)

— — — — —

A	A	A	C	D	E	E	E
E	F	I	K	L	M	N	N
O	R	R	R	R	R	S	S
S	S	S	T	T	T	U	W

Brain Trainer

EASY	32	x 2	+ 6	30% OF IT	+ 4	x 2	- 8	2/3 OF IT	+ 8	1/4 OF IT	ANSWER	
MEDIUM	61	x 7	+ 45	x 2	- 88	1/2 OF IT	- 59	+1/3 OF IT	+ 45	x 2	ANSWER	
HARDER	109	+ 688	x 3	+ 567	x 2	+ 958	50% OF IT	+ 368	+1/5 OF IT	+ 896	ANSWER	

Polygon



From these letters, make words of **four** or more letters, always including the central letter. Answers must be in the *Concise Oxford Dictionary*, excluding capitalised words, plurals, conjugated verbs (past tense etc), adverbs ending in LY, comparatives and superlatives.
How you rate 15 words, average; 20, good; 24, very good; 29, excellent

Yesterday's answers

ace, acer, acre, act, arc, car, care, caret, cart, carte, cat, cater, **cattery**, catty, cay, cert, crate, cry, race, racy, react, rec, tacet, tact, tec, trace, tract

Cell Blocks No 5146

				5	
4			6		6
	2				
	8				2
			3		2
4	2	2		3	

Divide the grid into square or rectangular blocks, each containing one digit only. Every block must contain the number of cells indicated by the digit inside it.

Set Square No 3765

	x 7	-		= 15
+	■	+	■	x
	-		÷	= 1
÷	■	x	■	x
	x 8	-		= 6
=		=		=
12		96		48

Enter each of the numbers from 1 to 9 in the grid, so that the six sums work. We've placed two numbers to get you started. Each sum should be calculated left to right or top to bottom.

Please note, BODMAS does not apply

Killer Tricky No 9564

19	14		23	10		18	21
	18			18			
		18	12				
13			9		14	20	
			10			12	8
4				17			
15		13			18		16
			8				15
13		11		18			

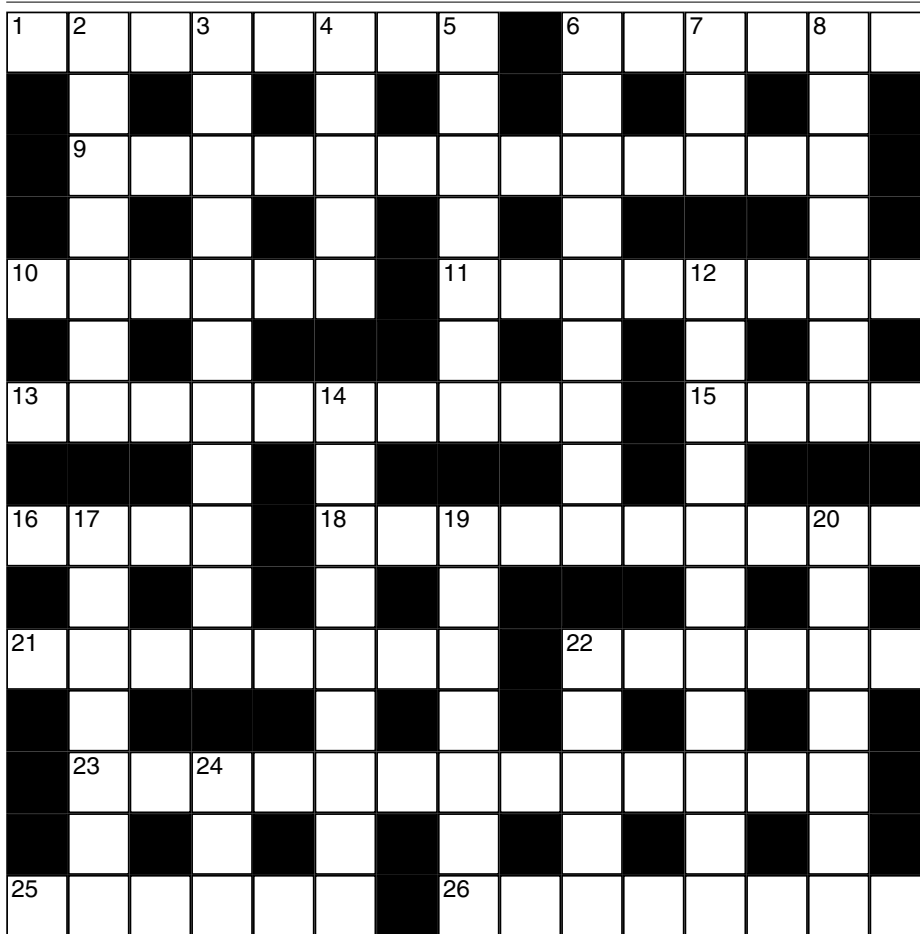
Killer Deadly No 9565

8		10		12			17
	24		23		14		16
		13					
21		8		28			7
		16			8	29	
17	19						17
			7			8	
	13	11		22			22
			10				

As with standard Sudoku, fill the grid so that every column, every row and every 3x3 box contains the digits 1 to 9. Each set of cells joined by dotted lines must add up to the target number in its top-left corner. Within each set of cells joined by dotted lines, a digit cannot be repeated.

Cluelines Stuck on Sudoku, Killer or KenKen? Call 0901 293 6263 before midnight to receive four clues for any of today's puzzles. Calls cost £1 plus your telephone company's network access charge. SP: Spoke, 0333 202 3390 (Mon-Fri 9am-5.30pm).

Times Crossword 28,965



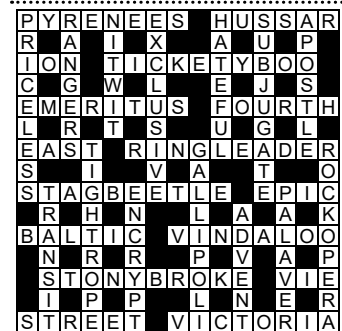
ACROSS

- 1 Account and article targeted backward scholarly world (8)
- 6 Screw, small, fairly regularly used (6)
- 9 Prestige owner somehow expecting this feature? (5,8)
- 10 Vampires perhaps circling house in ludicrous descent (6)
- 11 This sharp-witted writer seeks, only in small amount (3,5)
- 13 One is securing trade? Credit mostly impractical (10)
- 15 Go separate ways when returning in carriage (4)
- 16 Second division game sometimes ending in this (4)
- 18 Year in France in region there finding source (10)
- 21 Cheers to follow check about goal in violent dispute (8)
- 22 Marauder one up for covering area (6)
- 23 Call for a visit excited great force abroad (8,5)
- 25 Revolutionary Indian instrument good for nothing (6)
- 26 Height of talent learner's shown for piano (8)

DOWN

- 2 Whose noted contribution is valued still in PC World? (7)
- 3 Clown is so dejected! (11)
- 4 For customs, say what Panama has compared to Costa Rica? (5)
- 5 Temperature doubled in a drain almost causing crack (7)
- 6 Show power in second challenge that ousts king (9)
- 7 Place on the radio for string of bloomers? (3)
- 8 Great sliced sandwiches at Henley meeting? (7)
- 12 Extremist brutal having released new form of radiation (11)
- 14 Tearaway has drive round middle of Slough (9)
- 17 Expert having to conceal a butchery tool (7)
- 19 Air on with AC needing fix — something blown (7)
- 20 Redcap initially stopped guards in need of evening out (7)
- 22 Transformation with scope to have sex change? (5)
- 24 Grizabella maybe right to leave Barrow (3)

Yesterday's solution 28,964



Check today's answers by ringing 0905 757 0141 by midnight. Calls cost £1 per minute plus your telephone company's network access charge. SP: Spoke 0333 202 3390.

Solutions

Quick Cryptic 2723

WASHED UP BELL
 POA E I E
 ERRAND ABROAD
 I R C T R
 PLOD ELEPHANT
 E S A E
 STRUT BEARD
 L R L U
 RENEGADE DEBT
 E X N I O
 SPRING ACTUAL
 E L E S O R
 ERIE DISTRESS

Codeword 5262

SCARF BATHE
 W L U T S E T
 ODE GRUMP LEID
 R A L L D
 KERB FUR COLD
 M OWL ERA L
 ALTO O S DENY
 N ZOO ICE W
 SITE ROT TAXI
 H E R V N
 INN CLANG ELK
 P O L N R S
 ENJOY QUOTA

Kakuro 3761

1	3	9	8	1	3
1	2	5	7	9	3
3	4	9	2	6	1
2	1	3	1	2	
3	9	4	6	1	2
9	8	6	6	4	3
2	1	6	1	3	
9	7	9	6	8	6
8	6	3	7	1	5
5	1	7	9	9	7

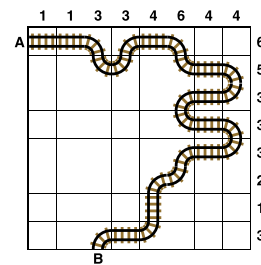
Sudoku 15,054

4	6	2	8	9	7	1	3	5
5	3	8	1	4	2	6	7	9
9	7	1	5	6	3	8	2	4
2	8	4	6	5	1	7	9	3
7	5	9	3	8	4	2	6	1
6	1	3	2	7	9	5	4	8
3	2	6	9	1	8	4	5	7
8	9	7	4	2	5	3	1	6
1	4	5	7	3	6	9	8	2

Tetonor 481

82	39	162	25
2 x 41	5 + 34	18 x 9	9 + 16
43	108	21	110
41 + 2	6 x 18	11 + 10	11 x 10
168	27	144	34
6 x 28	18 + 9	9 x 16	28 + 6
24	170	33	90
6 + 18	5 x 34	3 + 30	3 x 30

Train Tracks 2290



Sudoku 15,055

5	1	9	4	8	2	7	6	3
2	7	4	9	3	6	5	1	8
8	3	6	1	5	7	2	9	4
3	2	5	6	1	9	8	4	7
7	6	1	8	2	4	9	3	5
9	4	8	5	7	3	6	2	1
4	5	2	7	9	1	3	8	6
6	8	3	2	4	5	1	7	9
1	9	7	3	6	8	4	5	2

Cell Blocks 5145

7	2	4			
					2
7	5	2	2	2	
					3
			4		
					3
			6		

Set Square 3764

8	-	6	x	9
-		+		-
5	x	2	+	3
x		+		+
7	x	1	+	4

Lexica 7521

S	I	X			
T					
O	T	T	E	R	
L		A			M
E	S	C	A	P	E
		K			N

Sudoku 15,056

8	4	1	9	6	5	2	7	3
2	5	6	7	1	3	8	9	4
7	9	3	4	8	2	6	5	1
4	6	2	3	7	8	9	1	5
5	3	8	1	9	6	7	4	2
1	7	9	2	5	4	3	8	6
9	8	5	6	3	1	4	2	7
6	2	7	5	4	9	1	3	8
3	1	4	8	2	7	5	6	9

Futoshiki 4802

4	>	3	>	1	2	5
		^				
5	>	4	3	1	2	
						v
3	2	4	5	1		
						^
1	5	2	<	3	4	
						^
2	1	5	>	4	3	

KenKen 6254

1	3	6	5	4	2
3	5	2	6	1	4
5	2	3	4	6	1
2	1	4	3	5	6
6	4	5	1	2	3
4	6	1	2	3	5

Lexica 7522

C					
H	O	U	S	E	
E			H		
F	L	E	E	C	E
		I	E		
D	E	E	P	L	Y

Today's solutions

Killer 9562

7	3	9	4	2	1	5	8	6
1	4	2	5	6	8	9	3	7
6	5	8	7	3	9	2	4	1
5	7	1	9	4	6	8	2	3
9	2	6	8	7	3	1	5	4
4	8	3	1	5	2	6	7	9
3	9	5	6	8	4	7	1	2
8	6	4	2	1	7	3	9	5
2	1	7	3	9	5	4	6	8

Killer 9563

3	8	5	6	1	2	7	9	4
9	7	1	8	4	3	6	2	5
2	4	6	7	9	5	8	3	1
5	9	4	3	6	8	1	7	2
7	1	3	2	5	9	4	6	8
6	2	8	1	7	4	3	5	9
8	6	9	5	3	1	2	4	7
4	3	2	9	8	7	5	1	6
1	5	7	4	2	6	9	8	3

Cryptic Quintagram

- 1 Sand
- 2 Smock
- 3 Rafter
- 4 Western
- 5 Surrealist

Suko 4164

7	9	4
25	17	
6	3	1
22	14	
5	8	2

Brain Trainer

- Easy 9
- Medium 1,074
- Harder 5,462

Word watch

- Absquatulate** (b) To leave hurriedly (*Brewer's*)
- Kilhig** (a) A pole used to direct the fall of a tree (*OED*)
- Taraxacum** (c) The dried root of a dandelion (*Collins*)

Chess – Winning Move

1 Rf6! activates the rook and eyes up the h6-square. 1 ... gxf6 runs into 2 Qxh6 mate. Black tried 1 ... Kh7 but White powered through with 2 Rg7+! Kxg7 3 Qxh6+ Kg8 4 Qg5+ Kh8 5 Rh6 mate. The plausible try 1 ... Qc1 (with an x-ray defence of h6) fails to 2 Qxcl Rxc1 3 Nxe6 winning a piece

Samurai difficult

Fill each grid so that every column, every row and every 3x3 box contains the digits 1 to 9. Where the puzzles overlap, the rows and columns do not go beyond their usual length.

1		2		4			8					
						2		5				
		8	9									
		7	8	2								
2		6		1								
						4	7					
6			9	8					3			
4			2							2		
7				6	8	2						

		9				4			1	5		
									4			
		5			2	8						6
		8										
		1	5			6				3		
						8	5			7		
								1	7		4	3
											7	
										3	6	

			7	3						2		
			9			2				7		
			4				9	1				

		3	6						3	6	7				9
			7					4					2		4
8	1		5	7				5			4	6			5
	8		7	4						9	2				
	9			5			2	1					2	4	8
								8					7	5	9
9			4	5									7	4	
		6								2	3				
5	2		1		4					5			4	8	1

Futoshiki

Fill the blank squares so that every row and column contains each of the numbers 1 to 5 once only. The symbols between the squares indicate whether a number is larger ($>$) or smaller ($<$) than the number next to it.

			$>$		
			\vee		
	$>$				
			$>$		
\wedge					
	5				2

Train Tracks

Lay tracks to enable the train to travel from village A to village B. The numbers indicate how many sections of track go in each row and column. There are only straight sections and curved sections. The track cannot cross itself.

	5	5	4	5	4	4	1	3	
A									6
									6
									3
									3
									5
									6
									1
									1
									B

Sudoku easy

6	8	3				
	7	1	4	6		
			7		6	8
	9	4	7			
2		7			3	5
				5	4	7
	3	5		8		
			4	6	8	3
			9	7		2

Killer gentle

Fill the grid so that every column, every row and every 3x3 box contains the digits 1 to 9. Each set of cells joined by dotted lines must add up to the target number in its top-left corner. Within each set of cells joined by dotted lines, a digit cannot be repeated.

21	12			12	16		5	
		15	3		4		12	
15	3			23	9	11	7	17
	17		16	4		11	14	3
10	7			7				
		9	7	3	17		16	11
10	22				16			
			12			8		

Suko

10	17	
24	23	

16	15	14
----	----	----

Place the numbers 1 to 9 in the spaces so that the number in each circle is equal to the sum of the four surrounding spaces, and each colour total is correct

Codeword

Every letter in the crossword-style grid, right, is represented by a number from 1 to 26. Each letter of the alphabet appears in the grid at least once. Use the letters already provided to work out the identity of further letters. Enter letters in the main grid and the smaller reference grid until all 26 letters of the alphabet have been accounted for. Proper nouns are excluded.

	1	21	4	24	17	16	21		17	1	17	8	
8		15				1		13		21		24	
7	9	26	T	17	25	13	21		9	7	8	26	22
9		1		13		7		24		18		7	
3	1	7	20	7		20	7	1	2	17	9		
12				3		22	Y	26		1		12	
7	26	26	17	1	21		5	6	21	21	19	21	
2		6		13		26		24				3	
	18	1	24	18	21	1		3	21	12	17	26	
14		17		11		21		24		11		17	
1	21	10	13	21		12	24	15	1	24	24	20	M
21		21		26		11				16		21	
26	17	3	22		12	21	8	18	24	23	21		

A B C D E F G H I J K L M N O P Q R S T U V W X Y Z

1	2	3	4	5	6	7	8	9	10	11	12	13	
14	15	16	17	18	19	20	21	22	23	24	25	26	T

Mini Sudoku

Fill in the grid so that every column, every row and every 3x2 box contains the digits 1 to 6

	3	4	2	1	
		5	1		
	4			2	
		3	4		
4	5			6	2

Solutions in tomorrow's Times2

Yesterday's solutions

SAMURAI

5	8	1	2	6	7	4	9	3			2	3	9	8	6	7	1	5	4	
6	3	9	8	5	4	2	7	1			1	6	7	9	5	4	8	2	3	
4	2	7	3	1	9	6	5	8			4	8	5	1	2	3	9	7	6	
8	4	5	9	3	6	7	1	2			3	4	2	7	9	1	5	6	8	
2	7	3	4	8	1	5	6	9			9	5	1	6	4	8	7	3	2	
9	1	6	7	2	5	3	8	4			6	7	8	2	3	5	4	1	9	
7	6	8	1	4	3	9	2	5	3	6	8	7	1	4	3	8	6	2	9	5
1	5	4	6	9	2	8	3	7	9	1	4	5	2	6	4	7	9	3	8	1
3	9	2	5	7	8	1	4	6	5	2	7	8	9	3	5	1	2	6	4	7
						7	8	4	2	9	6	1	3	5						
						3	6	9	1	7	5	2	4	8						
						2	5	1	8	4	3	9	6	7						
6	5	1	2	8	7	4	9	3	7	8	2	6	5	1	7	8	9	4	2	3
8	4	9	1	6	3	5	7	2	6	3	1	4	8	9	6	3	2	5	1	7
2	3	7	4	9	5	6	1	8	4	5	9	3	7	2	1	5	4	8	9	6
1	7	8	5	2	9	3	6	4				2	3	6	8	1	7	9	4	5
4	2	5	6	3	1	7	8	9				7	4	5	2	9	3	1	6	8
3	9	6	8	7	4	1	2	5				9	1	8	4	6	5	7	3	2
7	1	3	9	5	8	2	4	6				8	2	3	9	7	1	6	5	4
9	6	4	3	1	2	8	5	7				5	9	7	3	4	6	2	8	1
5	8	2	7	4	6	9	3	1				1	6	4	5	2	8	3	7	9

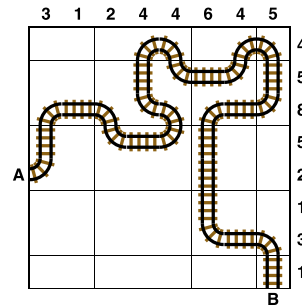
SUKO

7	3	5
13	14	
1	2	4
18	23	
6	9	8

MINI SUDOKU

6	5	4	1	2	3
1	2	3	4	6	5
2	3	5	6	4	1
4	1	6	5	3	2
5	4	2	3	1	6
3	6	1	2	5	4

TRAIN TRACKS



FUTOSHIKI

5	2	4	3	>	1	
			^			
4	3	>	1	5	2	
1	5	3	>	2	4	
			^			
2	>	1	5	4	3	
3	4	2	>	1	<	5

SUDOKU

2	8	4	1	9	3	7	6	5
1	6	3	2	5	7	9	4	8
7	5	9	6	8	4	3	2	1
8	3	5	7	2	1	4	9	6
9	4	7	8	3	6	1	5	2
6	1	2	9	4	5	8	7	3
3	2	1	5	7	9	6	8	4
5	9	6	4	1	8	2	3	7
4	7	8	3	6	2	5	1	9

KILLER

8	5	6	4	9	2	1	3	7
1	9	7	5	8	3	6	2	4
3	4	2	7	1	6	9	5	8
9	7	3	6	5	4	2	8	1
4	2	1	8	3	9	5	7	6
5	6	8	1	2	7	4	9	3
7	3	4	2	6	5	8	1	9
2	1	9	3	4	8	7	6	5
6	8	5	9	7	1	3	4	2

CODEWORD

E	V	I	L	O	V	E	R	F	U	L	L
M	N	A	I	O	P	P	O				
B	O	N	A	N	Z	A	U	P	S	E	T
A	E	G	B	G	T	H					
R	U	R	A	L	L	E	E	W	A	Y	
K		E	E		R	P					
E	X	P	I	R	Y	N	E	A	T	E	R
D	L		I	M		O					
P	A	R	D	O	N	B	E	A	R	D	
M	T	A	D	R	L	L	U				
E	J	E	C	T	I	D	Y	L	L	I	C
S	A	E	G	O	E	E					
S	Q	U	A	D	R	O	N	D	Y	E	D