

**National
Theatre**

What's



On

Nov 2024–Aug 2025

At a glance

Olivier

Ballet Shoes 23 Nov–22 Feb**Dear England** 10 Mar–24 May**London Road** 5–21 June**Nye** 3 July–16 Aug

Lyttelton

The Importance of Being Earnest 20 Nov–25 Jan**Alterations** 20 Feb–5 Apr**Here We Are** 23 Apr–28 June

Dorfman

A Tupperware of Ashes 25 Sep–16 Nov**Members book first**

Join today and secure your seats for *Alterations*, *Here We Are*, *London Road* and *Nye* at least five days ahead of the general public.

Patron and Supporting Cast booking opens on 7 Oct.

Priority member booking opens on 9 Oct.

Public booking opens on 16 Oct.

nationaltheatre.org.uk/memberships

Need a large-print text-only version of this guide?

Please use the URL below

nationaltheatre.org.uk/large-print



Official Payment Partner of the National Theatre

Welcome to this landmark season, Rufus Norris' final programme as Director.

To mark the occasion, we are thrilled to announce the long-awaited return of the award-winning musical *London Road*, originally staged in 2011, and to welcome back Tim Price's celebrated *Nye* in the Olivier. Both shows will be directed by Rufus.

In the Lyttelton, we continue our commitment to increasing the recognition of the work of underserved creative talent with Michael Abbensetts' *Alterations*, a seminal work from the National Theatre's Black Plays Archive, directed by Lynette Linton.

Finally, Stephen Sondheim's last musical *Here We Are* has its UK premiere at the National Theatre. Following the huge success of *Follies* and many celebrated stagings of his productions, we are honoured to be the UK home of the legendary composer's work.

We look forward to welcoming you to the South Bank soon.

Rufus Norris, Director

Kate Varah, Executive Director

Dear England

by James Graham

Director

Rupert Goold

Set Designer

Es Devlin

Costume Designer

Evie Gurney

Lighting Designer

Jon Clark

Co-Movement Directors

Ellen Kane

Hannes Langolf

Video Designer

Ash J Woodward

Co-Sound Designers

Dan Balfour

Tom Gibbons

Additional Music

Max Perryment

Revival Director

Elin Schofield

Casting Director

Bryony Jarvis-Taylor

Dialect Coach

Richard Ryder

Voice Coaches

Cathleen McCarron

Tamsin Newlands

Staff Director

Connie Treves

The country that gave the world football has since delivered a painful pattern of loss. Why can't England's men win at their own game?

The team has the worst track record for penalties in the world, and manager Gareth Southgate knows he needs to open his mind and face up to the years of hurt to take team and country back to the promised land.

Writer James Graham (*Punch*, Nottingham Playhouse; *Sherwood*, BBC) updates his epic examination of nation and game to reflect Gareth Southgate's final chapter as England manager. Rupert Goold (*Patriots*, *Cold War*, Almeida Theatre) once again directs this 'back-of-the-net winner' (★★★★★ *The i*).

10 Mar–24 May

Mon–Sat at 7.30pm

Wed and Sat at 2pm and 7.30pm

Selected Tue and Thu performances at 6.30pm

Assisted performances:

AD, BSL Interpreted, Captioned, Relaxed, Smart Caption Glasses

Tickets: £25–£99

To book and find out more:



The commissioning of this production was supported by the Sir Peter Shaffer Charitable Foundation. The original production at the National Theatre was generously supported by the Dear England Team of Production Champions. *Dear England* at the National Theatre and The Lowry is supported by American Express, the National Theatre's Official Payment Partner.

The Olivier Award-winning smash hit
returns to the National Theatre

Photography by Rick Guest, CGI by Rob Rae

London Road

book and lyrics by Alecky Blythe
music and lyrics by Adam Cork

Director
Rufus Norris
Set and Costume Designer
Katrina Lindsay
Music Director
David Shrubsole
Movement Director
Javier De Frutos
Sound Designer
Paul Arditti
Orchestrations
Adam Cork
Original Casting by
Wendy Spon
Additional casting by
Bryony Jarvis-Taylor

Autumn, 2006. The everyday life of the Suffolk town of Ipswich is shattered by the discovery of the bodies of five women.

The occupant of No. 79 London Road is arrested, charged and finally convicted of the murders. Caught in the headlines and the invasion of their quiet road, the community grapples with what it means to be at the epicentre of the tragedy.

Using their own words set to an innovative musical score, *London Road* is a moving story of ordinary people coming together during an extraordinary time.

Director Rufus Norris (*Small Island*), writer Alecky Blythe (*Our Generation*) and composer Adam Cork reunite for this highly anticipated return of the remarkable, award-winning verbatim musical.

5–21 June

Mon–Sat at 7.30pm

Wed and Sat at 2.30pm and 7.30pm

Performance on Tue 17 June at 6.30pm

Assisted performances:

AD, Captioned, Chilled

Tickets: £25–£99

To book and find out more:



'Genuinely groundbreaking'

Time Out

Photo from iStock. Art direction and design by National Theatre Graphic Design Studio.



'A taut and fluid triumph'

The i



Photography (Michael Sheen) by Rachel Louise Brown.

Nye

by Tim Price

a co-production with Wales Millennium Centre

Cast includes

Michael Sheen

Director

Rufus Norris

Set Designer

Vicki Mortimer

Costume Designer

Kinnetia Isidore

Lighting Designer

Paule Constable

Co-Choreographers

Steven Hoggett

Jess Williams

Composer

Will Stuart

Sound Designer

Donato Wharton

Projection Designer

Jon Driscoll

Revival Co-Director

Francesca Goodridge

Casting Directors

Alastair Coomer CDG

Chloe Blake

Dialect Coach

Patricia Logue

Voice Coaches

Cathleen McCarron

Tamsin Newlands

Consultant Medical

Adviser

Matt Morgan

Associate Lighting

Designer

Lucy Adams

From campaigning at the coalfield to leading the battle to create the NHS, Aneurin 'Nye' Bevan is often referred to as the politician with greatest influence on our country without ever being Prime Minister.

Confronted with death, Nye's deepest memories lead him on a mind-bending journey back through his life, from childhood to mining underground, Parliament and fights with Churchill in an epic Welsh fantasia.

Michael Sheen (*Under Milk Wood*) reprises his role as Nye Bevan in this 'valiant and valuable affirmation of the NHS' (★★★★ *Telegraph*). Written by Tim Price (*Teh Internet is Serious Business*) and 'vividly directed' (★★★★ *Times*) by Rufus Norris (*Small Island*).

3 July–16 Aug

Mon–Sat at 7.30pm

Wed and Sat at 2pm and 7.30pm

Selected Tue and Thu performances at 6.30pm

Assisted performances:

AD, BSL Interpreted, Captioned, Relaxed, Smart Caption Glasses

Tickets: £25–£99

To book and find out more:



This original production at the National Theatre was supported by the Huo Family Foundation and Rosetrees Trust. The commissioning of this play was generously supported by the Sir Peter Shaffer Charitable Foundation. This play is a recipient of an Edgerton Foundation New Plays Award.

Alterations

by Michael Abbensetts

Director

Lynette Linton

Set and Costume Designer

Frankie Bradshaw

Lighting Designer

Oliver Fenwick

Movement Director

Shelley Maxwell

Composer

Duramanay Kamara

Sound Designer

George Dennis

Casting Directors

Alastair Coomer CDG

Naomi Downham

Dialect Coach

Hazel Holder

Associate Set and Costume Designer

Natalie Johnson

Walker Holt has big dreams for his tailor's shop, and an even bigger order to complete. Over the course of 24 hours he must work tirelessly to satisfy his new client's impossible tailoring needs.

But as the night goes on, it's not just the trouser hems that start to fray as tensions rise and Walker's friendships and relationships are pushed to their limits. His success comes at a cost, but what price is he willing to pay?

Lynette Linton (*Blues for an Alabama Sky, Shifters*) directs Michael Abbensetts' (*Sweet Talk, Empire Road*) era-defining comedy in its largest ever staging. Celebrating this award-winning writer, the reinvigorated version of his seminal work illuminates the Guyanese experience of 1970s London and the aspirations and sacrifices of the Windrush generation.

20 Feb–5 Apr

Mon–Sat at 7.30pm

Wed and Sat at 2.30pm and 7.30pm

Selected Tue and Thu performances at 6.30pm

Assisted performances:

AD, BSL Interpreted, Captioned, Relaxed, Smart Caption Glasses

Tickets: £20–£89

To book and find out more:



'Is that what you want?
To be an underdog all your life?'

‘Joe Mantello’s
breathtakingly chic production’

New York Times Critic’s Pick



Illustration by AKA NY.

Here We Are

book by David Ives

music and lyrics by Stephen Sondheim

inspired by the films of Luis Buñuel

A Tom Kirdahy, Sue Wagner, John Johnson and The Stephen Sondheim Trust production
co-produced with the National Theatre

Director

Joe Mantello

Set and Costume

Designer

David Zinn

Choreographer

Sam Pinkleton

Orchestrations

Jonathan Tunick

Additional

Arrangements

Alexander Gemignani

Conductor

Nigel Lilley

Lighting Designer

Natasha Katz

Sound Designer

Tom Gibbons

Casting Director

Bryony Jarvis-Taylor

It's a perfect day for brunch.

Leo and Marianne Brink have found the ideal spot to take their friends. With great reviews, impeccable service and an extensive menu it seems like nothing could go wrong. But after a series of strange events interrupt their meal, they soon realise they've bitten off more than they can chew.

Stephen Sondheim's (*Into the Woods*, *Follies*) 'cool, and impossibly chic' (*New York Times Critic's Pick*) final work is directed by two-time Tony Award-winner Joe Mantello (*WICKED*, *The Boys in the Band*) with book by Tony Award-nominee David Ives (*All in the Timing*, *Venus in Fur*).

23 Apr–28 June

Mon–Sat at 7.30pm

Wed and Sat at 2.15pm and 7.30pm

Selected Tue and Thu performances at 6.30pm

Assisted performances:

AD, BSL Interpreted, Captioned, Relaxed, Smart
Caption Glasses

Tickets: £25–£110

To book and find out more:



A woman with long dark hair, wearing a white button-down shirt over a black top, blue jeans, and a patterned headscarf, is reaching up to touch a piece of light blue fabric hanging on a rack. The store is filled with various colorful clothing items on racks, including bright red, blue, and patterned garments. The lighting is warm and focused on the woman and the clothing she is examining.

>Welcome
to the

National Theatre

Green
Store

The National Theatre Green Store is our brand-new large-scale sustainability initiative. This game-changing facility has been developed to inspire designers at the early stages of the production process to reuse existing materials, whilst encouraging them to achieve their creative goals and adhere to the Theatre Green Book standards. By encouraging

reuse we can create a circular economy and reduce our carbon footprint. We are committed to making theatre sustainable and have set ambitious targets to achieve Net Zero by 2030.



After 34 years in our old home in Kennington we have moved to an exciting new space in Bermondsey which provides **1,260m** of hanging space and holds over **131,652 items of costume**. For the first time, all **21,942 of our props** are housed under the same roof, making us a one-stop-shop for hire to the creative industries.

Not only does the store recycle stock back into National Theatre shows, the Costume and Props Hire department also provides a unique service for **400+** other theatres, **200+** schools and colleges, as well as hiring to film and television companies, photographers, media and more.

We're excited to give you a sneak peek inside...



Green Store photography by Peter Goding.

The bestselling book
revitalised for the stage



Photography (Grace Saif, Daisy Sequerra) by Rachel Louise Brown. Art direction and design by Louise Richardson and National Theatre Graphic Design Studio.

Ballet Shoes

by Noel Streatfeild
in a new version by Kendall Feaver

Cast includes

Stacy Abalogun
Eryck Brahmania
Cordelia Braithwaite
Michelle Cornelius
Sonya Cullingford
Jenny Galloway
Courtney George
Georges Hann
Nadine Higgin
Katie Lee
Helena Lymbery
Sharol Mackenzie
Pearl Mackie
Nuwan Hugh Perera
Xolisweh Ana Richards
Sid Sagar
Grace Saif
Justin Salinger
Daisy Sequerra
Katie Singh

Director

Katy Rudd

Set Designer

Frankie Bradshaw

Costume Designer

Samuel Wyer

Choreographer

Ellen Kane

Composer

Asaf Zohar

Dance Arrangements and Orchestration

Gavin Sutherland

Lighting Designer

Paule Constable

Sound Designer

Ian Dickinson

for Autograph

Casting Director

Bryony Jarvis-Taylor

Dialect Coach

Penny Dyer

Voice Coaches

Cathleen McCarron

Tasmin Newlands

Associate

Choreographer

Jonathan Goddard

Staff Director

Aaliyah McKay

In a crumbling house full of dinosaur bones and fossils, three adopted sisters – Pauline, Petrova and Posy – are learning who they are and what they want to be.

Under the watchful eyes and guidance of their guardian Sylvia, Nana, and some unlikely lodgers, they fight to pursue their individual passions. But in a world that wasn't built for women with big ambitions, can they forge a future, keep their family together, and even learn a dance or two along the way?

Katy Rudd (*The Ocean at the End of the Lane*) returns to the National Theatre to direct this spectacular reimagining of Noel Streatfeild's beloved novel, in a new version by Kendall Feaver (*The Almighty Sometimes*).

23 Nov–22 Feb

Mon–Sat at 7pm

Wed and Sat at 1.30pm and 7pm

Selected Tue performances at 6.30pm

Assisted performances:

AD, BSL Interpreted, Captioned, Relaxed

Tickets: £25–£99

To book and find out more:



This is an Edgerton New Plays Commission.

A Trivial Comedy for Serious People



Photography (Ronke Adékoluéjé, Sharon D. Clarke, Ncuti Gatwa, Eliza Scanlan and Hugh Skinner) by Danny Kasirye.

The Importance of Being Earnest

by Oscar Wilde

Cast includes

Ronke Adékoluéjé
Julian Bleach
Shereener Browne
Richard Cant
Sharon D Clarke
Ncuti Gatwa
Jasmine Kerr
Amanda Lawrence
Gillian McCafferty
Elliot Pritchard
Eliza Scanlan
Hugh Skinner

Director

Max Webster

Set and Costume Designer

Rae Smith

Lighting Designer

Jon Clark

Sound Designer

Nicola T. Chang

Movement Director

Carrie-Anne Ingrouille

Composer

DJ Walde

Physical Comedy Advisor

Joyce Henderson

Casting Directors

Alastair Coomer CDG

Chloe Blake

Dialect Coach

Hazel Holder

Voice Coach

Shereen Ibrahim

Associate Set Designer

Isabel Munoz-Newsome

Associate Costume Designer

Petros Kourtellaris

Associate Sound Designer

Christopher Reid

Associate Wigs, Hair and Make-up Designer

Adele Brandman

Staff Director

Tanuja Amarasuriya

Being sensible can be excessively boring. At least Jack thinks so.

While assuming the role of dutiful guardian in the country, he lets loose in town under a false identity. Meanwhile, his friend Algyp takes on a similar facade.

Unfortunately, living a double life has its drawbacks, especially when it comes to love. Hoping to impress two eligible ladies, the gentlemen find themselves caught in a web of lies they must carefully navigate.

Max Webster (*Donmar's Macbeth; Life of Pi*) directs a joyful and flamboyant reimagining of Oscar Wilde's most celebrated comedy. Cast includes Olivier Award-winner Sharon D Clarke (*Ma Rainey's Black Bottom*), Ncuti Gatwa (*Doctor Who*) and Hugh Skinner (*W1A*) in this hilarious story of identity, impersonation and romance.

20 Nov–25 Jan

Mon–Sat at 7.30pm

Wed and Sat at 2.30pm and 7.30pm

Selected Thu performances at 6.30pm

Assisted performances:

AD, BSL Interpreted, Captioned, Dementia-Friendly, Smart Caption Glasses

Tickets: £25–£110

To book and find out more:



I'm falling through a world
which makes no sense



Photography (Meera Syal) by Tami Aftab.

A Tupperware of Ashes

a new play by Tanika Gupta

Cast

Raj Bajaj
Natalie Dew
Marc Elliott
Stephen Fewell
Shobna Gulati
Avita Jay
Meera Syal
Zubin Varla

Director

Pooja Ghai

Set and Costume Designer

Rosa Maggiora

Lighting Designer

Matt Haskins

Composer

Nitin Sawhney

Sound Designer

Elena Peña

Illusions Director

John Bulleid

and Designer

Movement Director

Anjali Mehra

Fight and

Intimacy Directors

Rachel Bown-Williams

Ruth Cooper-Brown

for Rc-Annie Ltd

Music Associate

David Shrubsole

Casting Director

Naomi Downham

Dialect Coach

Hazel Holder

Voice Coach

Tamsin Newlands

Staff Director

Layla Madanat

An ambitious Michelin-Star chef, Queenie is used to having the last word.

But when her children notice gaps in her memory and her grip on reality loosening, they are faced with an impossible choice. As Raj, Gopal and Kamala battle to reconcile their life-long duty to their mother, the ramifications of their decision take on a heart-breaking permanence.

Tanika Gupta (*A Doll's House*, Lyric Hammersmith) and Pooja Ghai (Artistic Director of Tamasha Theatre Company) reunite for their latest collaboration, following the critically acclaimed *The Empress*. Meera Syal is Queenie in this vivid and heart-breaking family drama about life, immigration and the Indian spiritual cycle of death and rebirth.

25 Sep–16 Nov

Mon–Sat at 7.30pm

Wed and Sat at 2.30pm and 7.30pm

Selected Tue and Thu performances at 6.30pm

Assisted performances:

AD, Integrated BSL, Captioned, Relaxed

Tickets: £20–£64

To book and find out more:



This play is a recipient of an Edgerton Foundation New Plays Award.

Coming

Inter Alia

by Suzie Miller

From the team behind *Prima Facie*, Rosamund Pike (*Saltburn*) leads the cast as an eminent High Court Judge forced to reckon her professional life and role as wife, mother, friend and feminist in Suzie Miller's new play, directed by Justin Martin (*The Inheritance*).

Lyttelton Theatre, from summer 2025

The Estate

by Shaan Sahota

Adeel Akhtar (*Four Lions*) plays an ambitious politician with his sights set on Number 10 when his father's death brings questions about the family estate to the fore. Shaan Sahota's new play is directed by Daniel Raggett (*Accidental Death of an Anarchist*).

Dorfman Theatre, from July 2025

End

by David Eldridge

Every love story has a final chapter. David Eldridge (*Beginning, Middle*) returns to the National Theatre to conclude the final part of his critically acclaimed trilogy, directed by Lyric Hammersmith Artistic Director Rachel O'Riordan (*Romeo and Julie*).

Dorfman Theatre, from Nov 2025

The Land of the Living

by David Lan

Directed by Stephen Daldry (*An Inspector Calls*), this remarkable new play by former Young Vic Artistic Director David Lan tells the story of displaced children following WWII. The cast includes Juliet Stevenson (*The Doctor*).

Dorfman Theatre, from Sep 2025

Inter Alia, The Estate, The Land of the Living and *End* will go on sale in early 2025. Dates to be announced.

Soon

In Cinemas

National Theatre Live

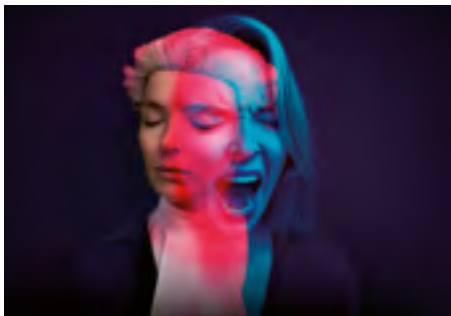


Present Laughter

by Noël Coward
directed by Matthew Warchus

The multi-award-winning production of the provocative comedy featuring Andrew Scott is back on the big screen.

In cinemas now

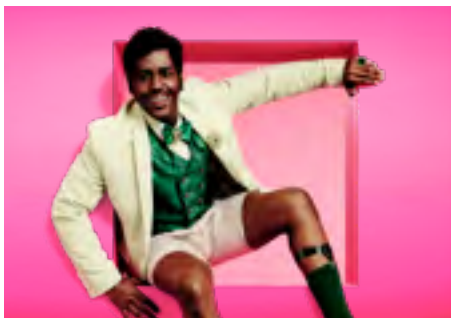


Prima Facie

by Suzie Miller
directed by Justin Martin

Jodie Comer's powerful performance in the gripping one-woman play returns to cinemas.

In cinemas now



The Importance of Being Earnest

by Oscar Wilde
directed by Max Webster

Sharon D Clarke and Ncuti Gatwa feature in this joyful reimagining of the classic comedy.

In cinemas from 20 February 2025



To find your nearest venue scan the QR code or head to our website
ntlive.com



Stream online

National Theatre at Home



Vanya

Presented by Wessex Grove, Gavin Kalin Productions and Kater Gordon

Andrew Scott (*Fleabag*) brings multiple characters to life in Simon Stephens' (*The Curious Incident of the Dog in the Night-Time*) radical new version of Chekhov's *Uncle Vanya*.

Streaming now



People, Places & Things

A production from National Theatre

Denise Gough reprises her Olivier Award-winning role as Emma, a struggling actress whose life is spinning recklessly out of control, in Duncan Macmillan's intoxicating hit play.

Streaming now



London Tide

A production from National Theatre

This romantic thriller is a hymn to the city and the river that runs through it. Directed by Ian Rickson and adapted by Ben Power, the genius of Dickens meets the fierce musical imagination of acclaimed singer-songwriter, PJ Harvey.

Streaming from November



To start streaming scan the QR code or head to our website
ntathome.com

National Theatre at Home is sponsored by

Bloomberg Philanthropies

Food & Drink

Where to eat this winter at the National Theatre. To find out more, visit our website nationaltheatre.org.uk



Mulled wine, seasonal specials and Christmas cheer are all on offer at **The Understudy** this winter.

Enjoy London's best street food from KERB and drinks from local producers, including Black Lines, Gipsy Hill Brewing Co. and Nirvana Brewing.

Forza Wine's 'Italian-ish' plates, natural wine, signature cocktails, and river views offer the perfect combination this winter.

Join us from noon until 11pm for small plates from our daily changing menu, or if you're feeling festive, order one of everything!



Celebrate the festive season at **Lasdun**, where elegant British classics are served alongside crisp martinis and an extensive wine list.

A private dining room, seating up to ten, is the ideal spot to enjoy their feasting menu.



How to book

Online nationaltheatre.org.uk

By phone 020 3989 5455
9.30am-6pm, Mon to Fri
10am-6pm, Sat

In person South Bank, London, SE1 9PX
10am-6pm, Mon to Sat

Adjusted ticket prices are available for Access list members

To book access tickets call our access booking line on 020 7452 3961.

Under-18s, 16-25-year-olds and over-60s prices

Please see the website or contact the Box Office for more details.

Members book first

Join today and secure your seats for *Alterations*, *Here We Are*, *London Road* and *Nye* at least five days ahead of the general public.

Patron and Supporting Cast booking opens on 7 Oct.

Priority member booking opens on 9 Oct.

Public booking opens on 16 Oct.

nationaltheatre.org.uk/memberships

Book early for the best seats

Prices may change according to demand.

No booking fee online. A £3 fee per transaction for phone bookings.



020 3989 5455

nationaltheatre.org.uk

	Supported using public funding by ARTS COUNCIL ENGLAND	Official Payment Partner 	Headline Partner for NT at Home Bloomberg Philanthropies	Official Audio Partner of New Views audible
BANK OF AMERICA Outdoor Media Partner	CHANEL Official Hotel Partner	Official Airline Partner Your Carrier to the USA and beyond DELTA Pouring Partner	MARKEL Partner for Financial Wellbeing	Sponsor of NT Live in the UK sky arts
Clear Channel	EDWARDIAN HOTELS LONDON	NYETIMBER PRODUCT OF ENGLAND	CHARLES STANLEY	of The Fox National Theatre Creative Careers



From the Archive

Model of photocopier, 2012

This photocopier and box of files are pieces from the set model of *Antigone*. Designed by Soutra Gilmour, the set portrays office spaces with items such as files and notepads adding to the aesthetic. The full model can be viewed in the National Theatre Archive along with production notes explaining design decisions.

The National Theatre's Archive documents every production from opening night in 1963 right up to the present day. The Archive is free and open to everyone by appointment. To find out more: nationaltheatre.org.uk/about-us/archive