



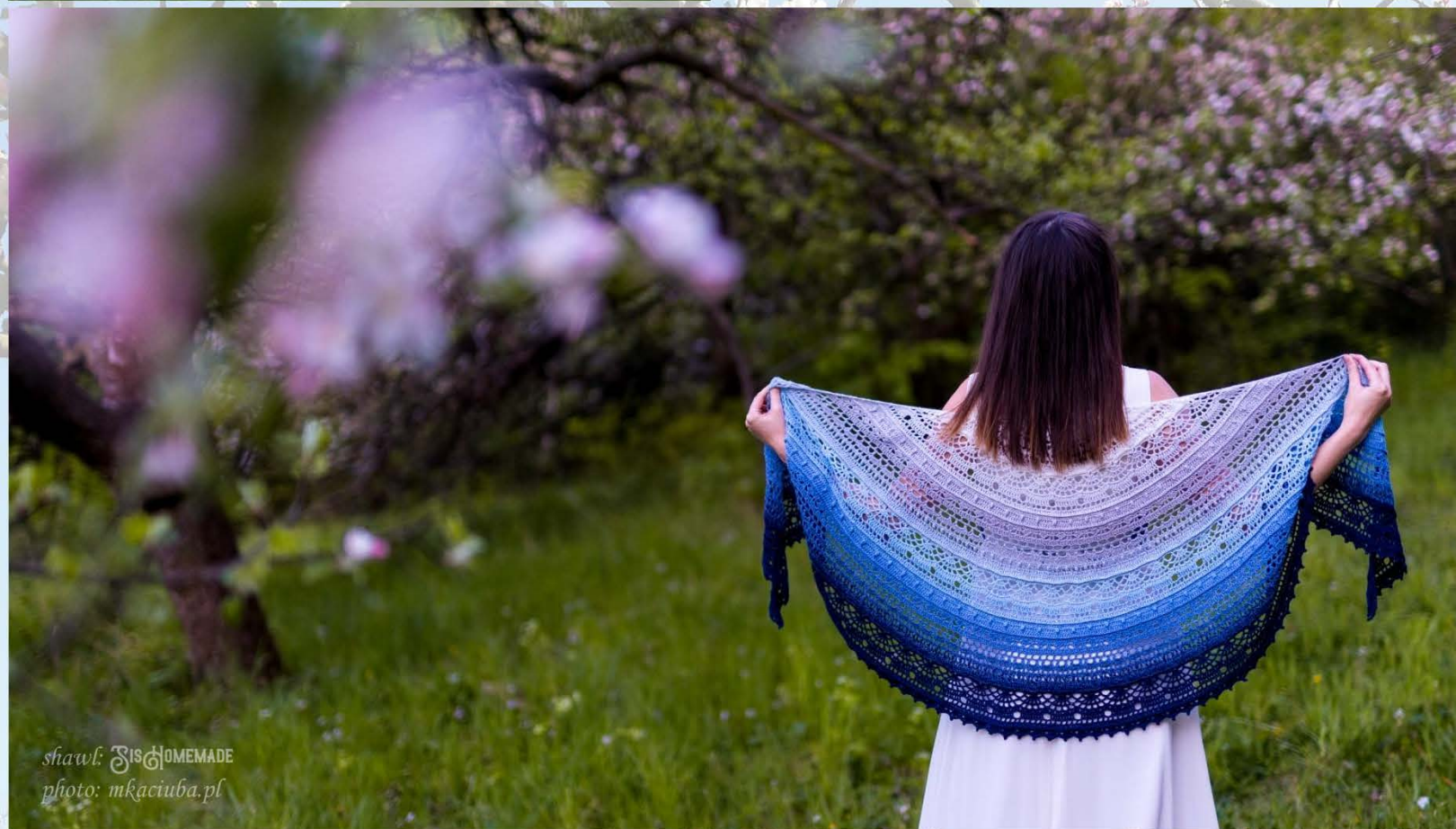
SIS **HOMEMADE**

← ————— →

• • •

SIS **LOVE HALF-CIRCLE**

SHAWL PATTERN



ŚISŁOMEMADE

ŚISŁOŹE 4LF SHAWL by Joanna Grzelak

It took me a while to prepare this pattern,
so I'm asking you to tag our page when you're sharing the shawl you've made
(@SisHomemade / #sishomemd / #sislovehshawl).

ŚISŁOŹE 4LF SHAWL pattern and photos used in this description belong to

Joanna Grzelak / ŚISŁOMEMADE

All rights reserved. Please do not share, sell, or redistribute this pattern in part or in whole.

Please do not record video tutorials.

If you want to share this pattern with someone else, please give a link to one of our fanpages.



sishomemade.pl



[ravelry.com/people/SisHomemade](https://www.ravelry.com/people/SisHomemade)



[facebook.com/Sishomemd](https://www.facebook.com/Sishomemd)



[pinterest.com/antomasiak/sishomemade](https://www.pinterest.com/antomasiak/sishomemade)



[instagram.com/sishomemd](https://www.instagram.com/sishomemd)

If you have any questions about this pattern, feel free to contact us, or visit our dedicated group on FB:

[SisHomemadePatternGroup](#)

You may sell the finished product :)

photos: mkaciuba.pl

• • •

ENJOY YOUR CROCHETING!



Materials:

- ▶ 1000m Scheepjes Whirl - 755 Blueberry Bambam
- ▶ 300m Scheepjes Whirlette - 868 Bilberry.
- ▶ crochet hook 3,5mm
- ▶ 14x markers (optional)

Measurements:

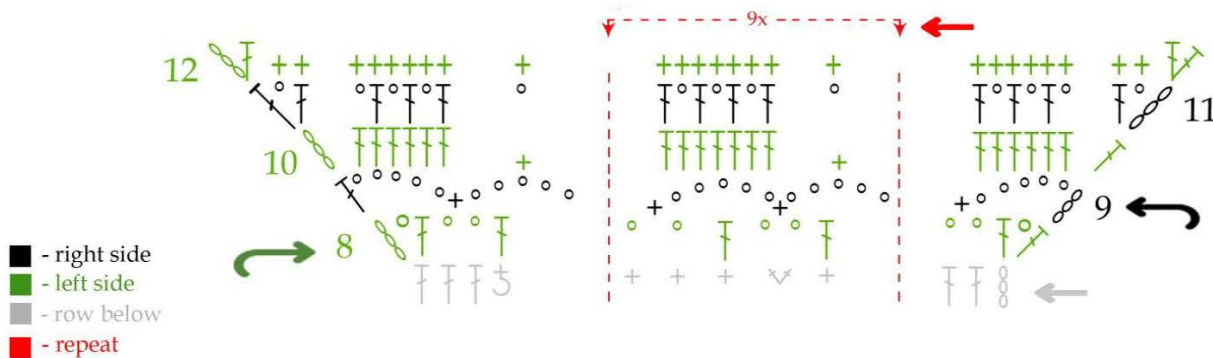
- ▶ 190/60cm – after blocking

How to read the chart:

Odd rows (right side of shawl) are read from right to left.

Even rows (left side of the shawl) are read from left to right.

So we always start from the side with the row number. The row that is already done is drawn in gray. Don't do it a second time.



Start with chain 5 and join a ring with slip stitch (or make a magic ring). The first row is crocheted around the ring.

Turn your work after every row.

After completing to R.31, continue with part II (R.8II – 31II) and then part III (R.8III - to the end).

At the beginning the ends of the shawl will go up. They will align in the following parts and after blocking, but if you want, you can try with chain 4 instead of chain 3 at beginning of the rows and a treble crochet (yarn over the hook 2 times) instead of a double crochet at the end of the rows.

On the FB group: [SisHomemade Pattern Group](#) there are photos of the shawls made in various combinations.

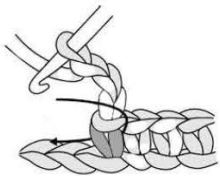


Used stitches (US terms):



○	- chain (ch)
+	- single crochet (sc)
✕	- 2 sc in 1 stitch (sc inc)
⊕	- 2 sc in 1 stitch with 1 ch (sc1ch inc)
‡	- front post single Crochet (Fpsc)
⌈	- double crochet (dc)
∇	- 2 dc in 1 stitch (dc inc)
∧	- dc2 together (dc2tog)
‡	- front post double crochet (Fpdc)
⌋	- back post double crochet (Bpdc)
⊖	- puff stitch (yarn over 4x) (puff)
⊙	- picot*

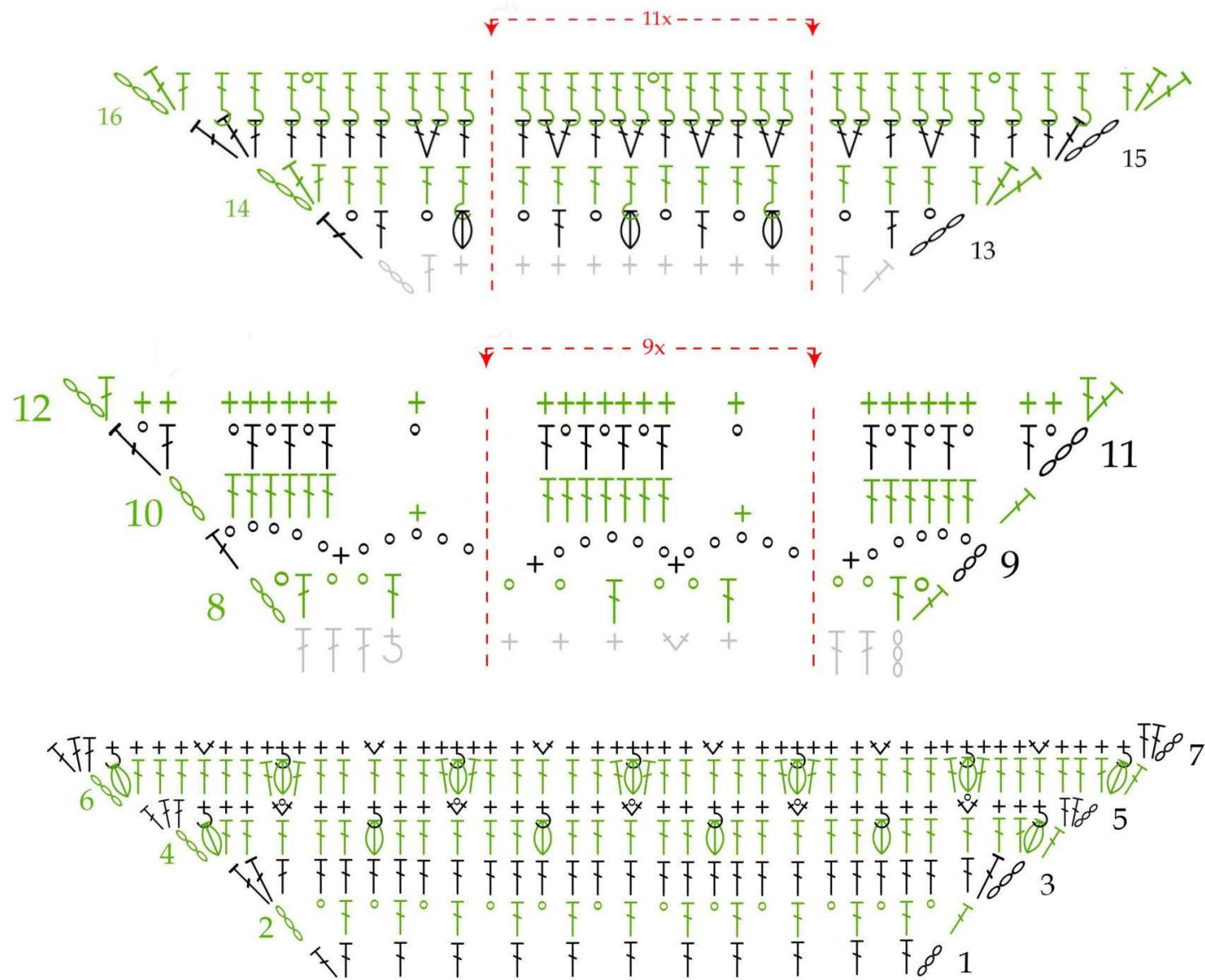
*picot stitches can be done in several ways. If you want it to always be in the center of the "fan", you can do it as in the picture below:



Special terms used:

‡	- sc with a 'hook' (Hsc) - sc made into the space between 2 dcs from the previous row.
⌈	- dc with a 'hook' (Hdc) - dc made into the space between 2 dcs from the previous row.

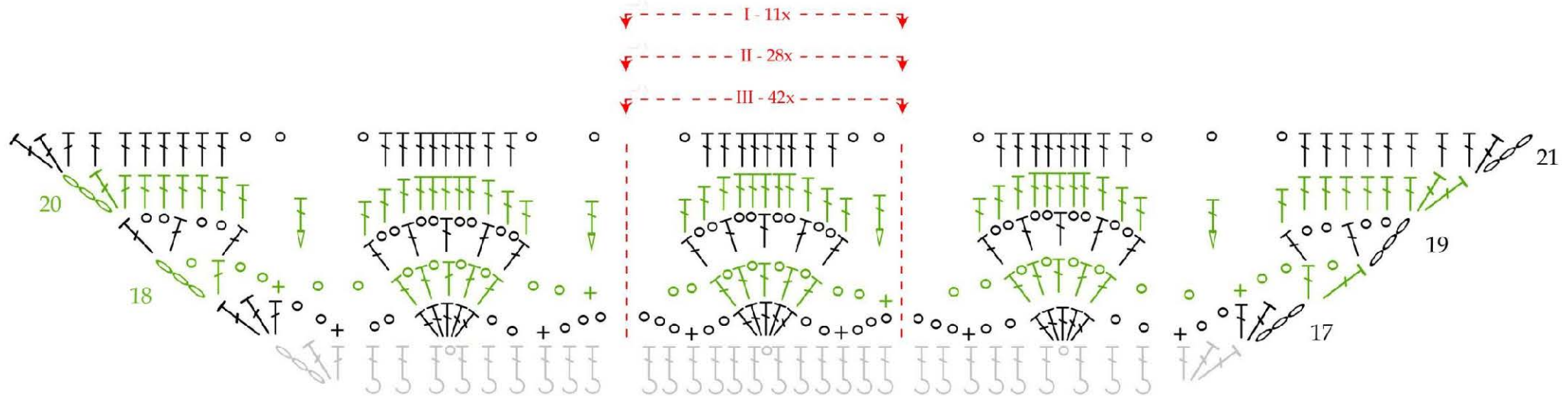
Part I



Note:

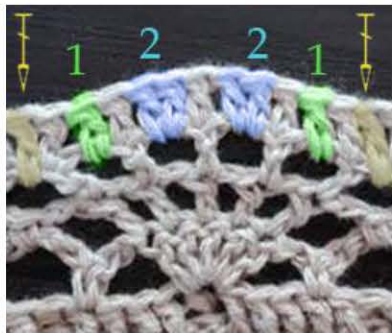
- ▶ Watch the beginning and end of rows: 2, 9, 10 & 12.
- ▶ In rows 5 and 7 above puff stitches make Fpssc.



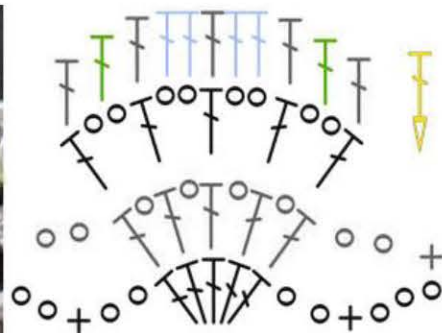


Note:

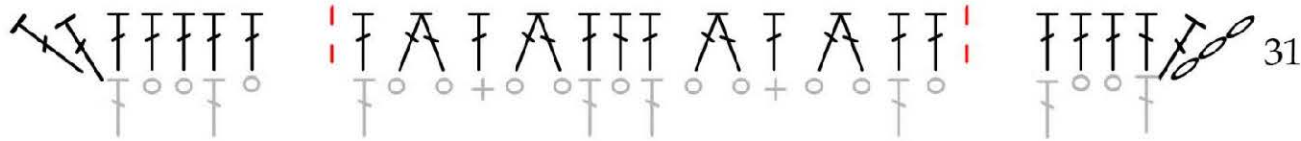
- ▶ Watch the beginning and end of row 19.
- ▶ In row 20 only at the beginning and end are 2 stitches in 2 ch-space. In the 'fans' is: 1,2,2,1. Between the fans there is a "dc with a hook" - made between 2 dcs from the previous row (pic. 1)
- ▶ The number of repetitions in the next parts is marked in red.



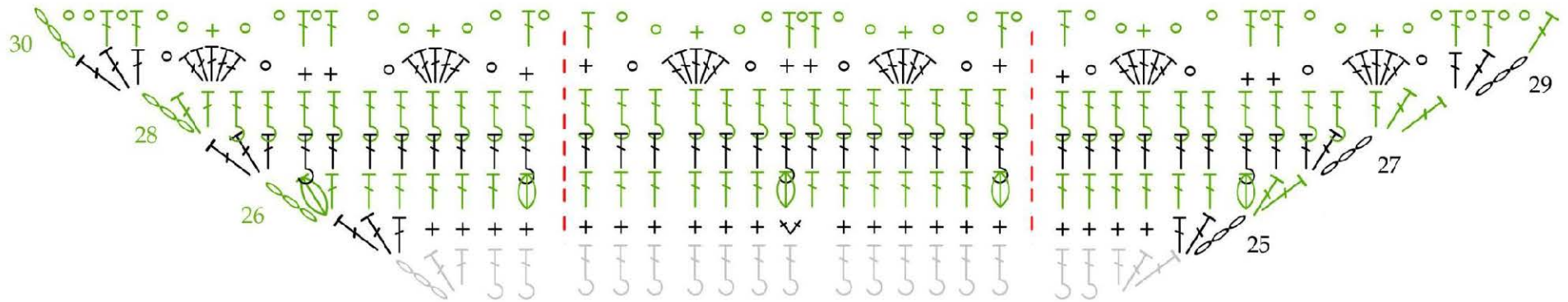
pic.1



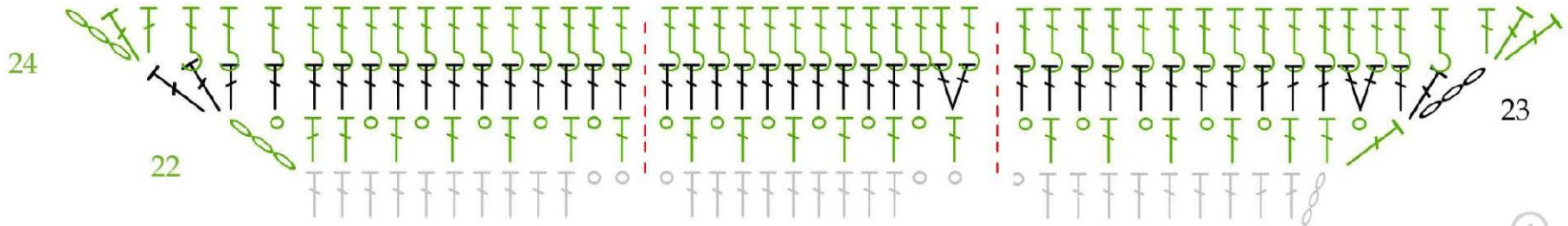
17x



15x



13x

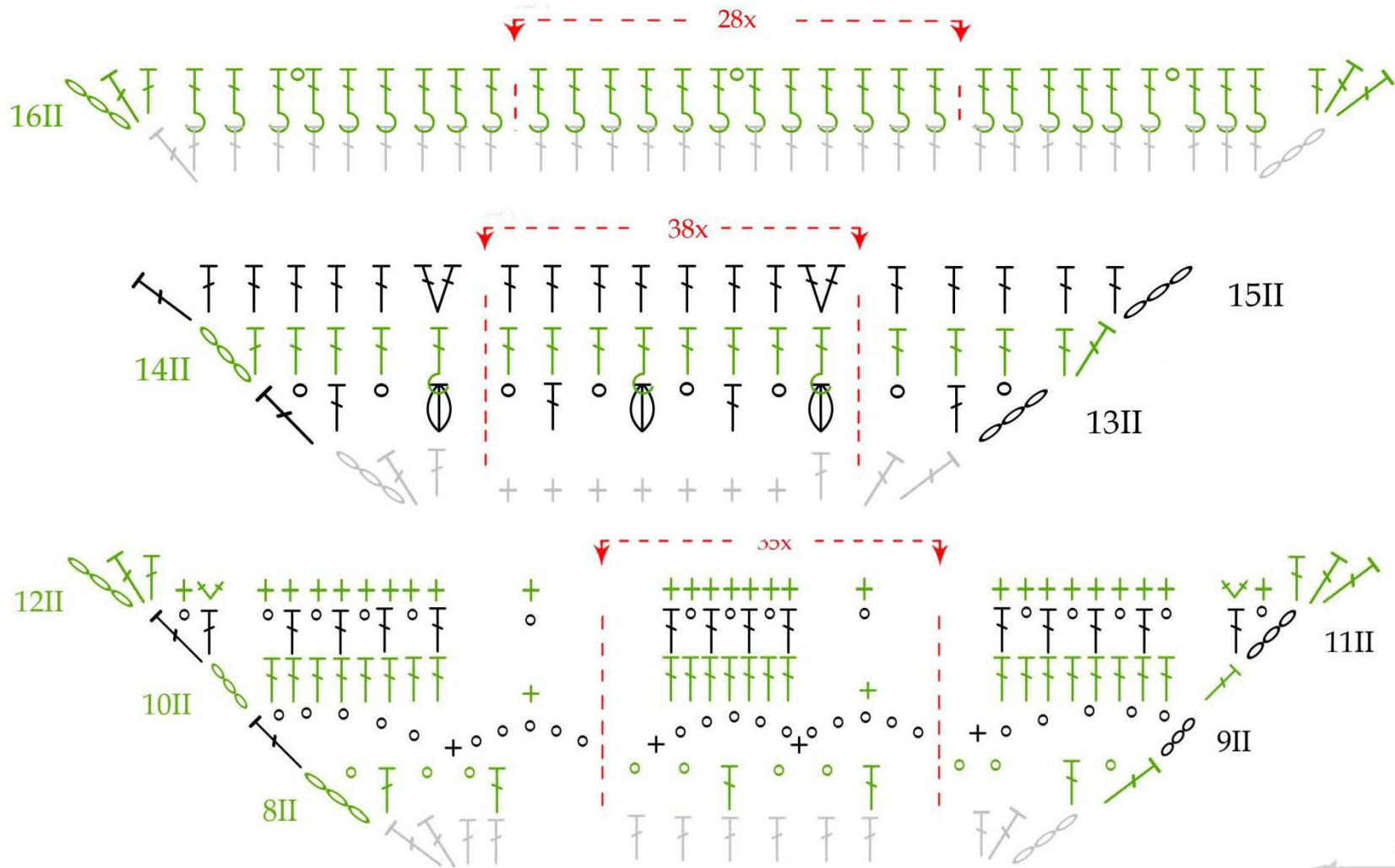


Note:

- ▶ Watch the beginning and end of rows: 23, 26 & 30.



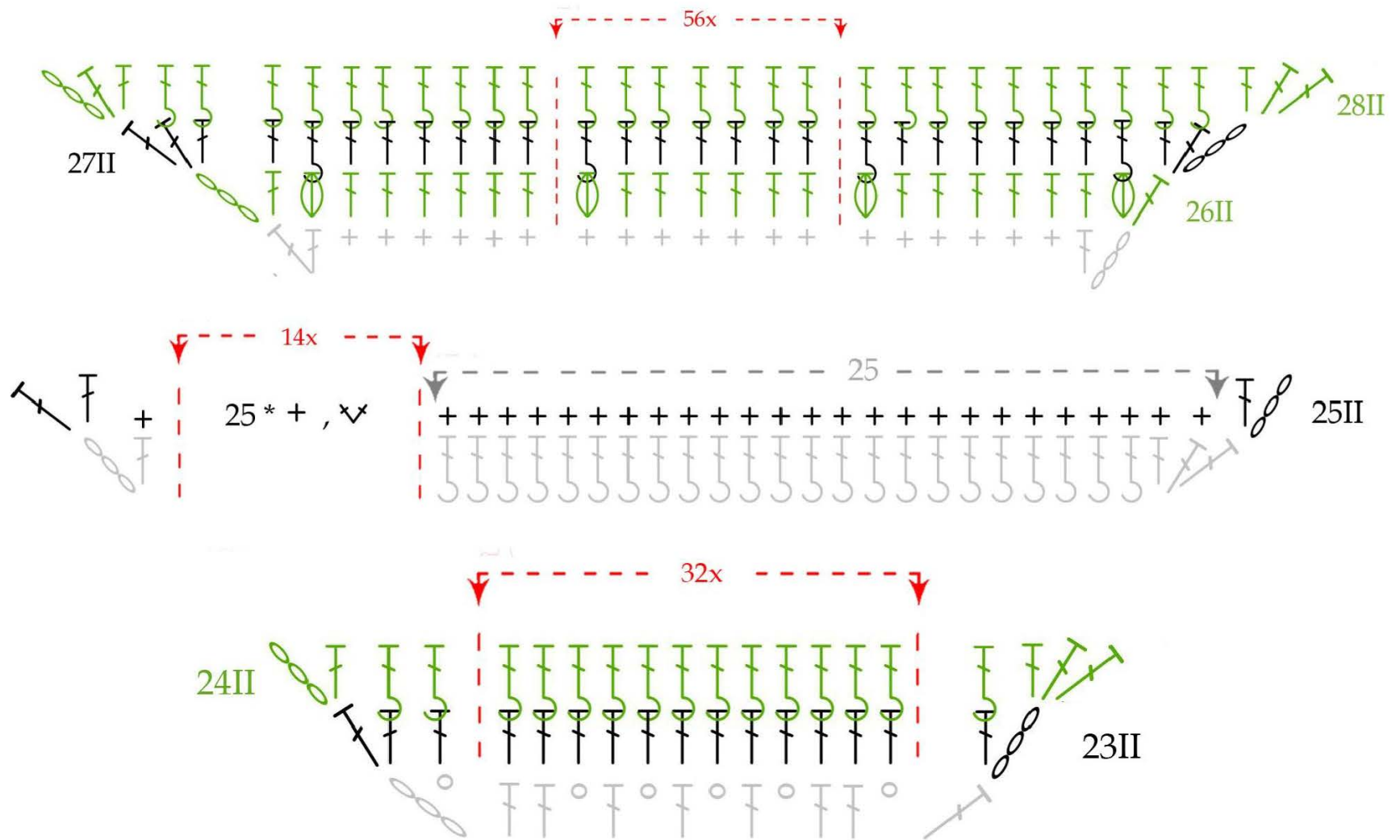
Part II



Note:

- ▶ Watch the beginning and end of rows: 9, 10, 14 & 15.
- ▶ The chart shows a simplified row 31. Dc2tog is replaced with 1 dc.
- ▶ **Rows 17 - 22 in Part II are the same as in Part I (page 6-7).**

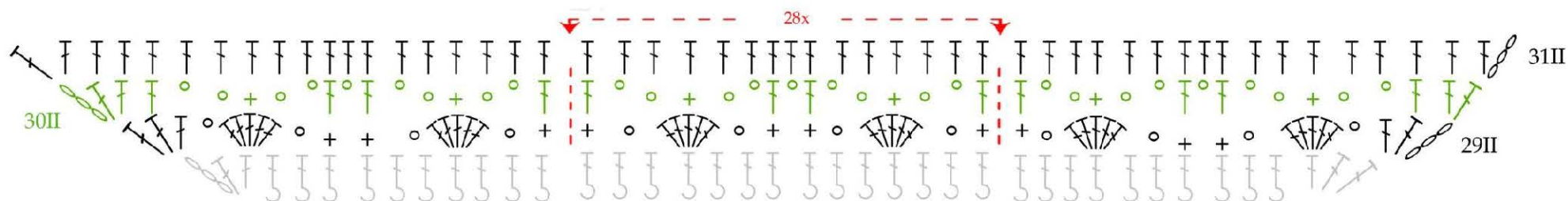




Note:

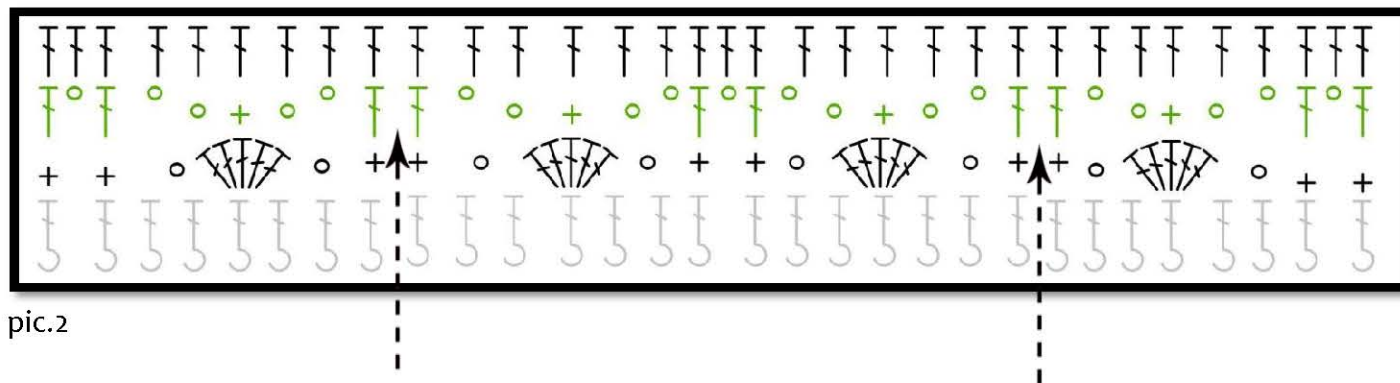
- ▶ Watch the beginning and end of rows: 23, 24, 25 & 26.
- ▶ 25 * + , ✓ - 1 sc In next 25 sts, 2 sc in next 1 st. If you don't like counting, take 14 markers and spread out more or less evenly along the entire length of the row of 24. Make 2 sc in 1 stitch in the marked loops and 1 sc each other.





Note:

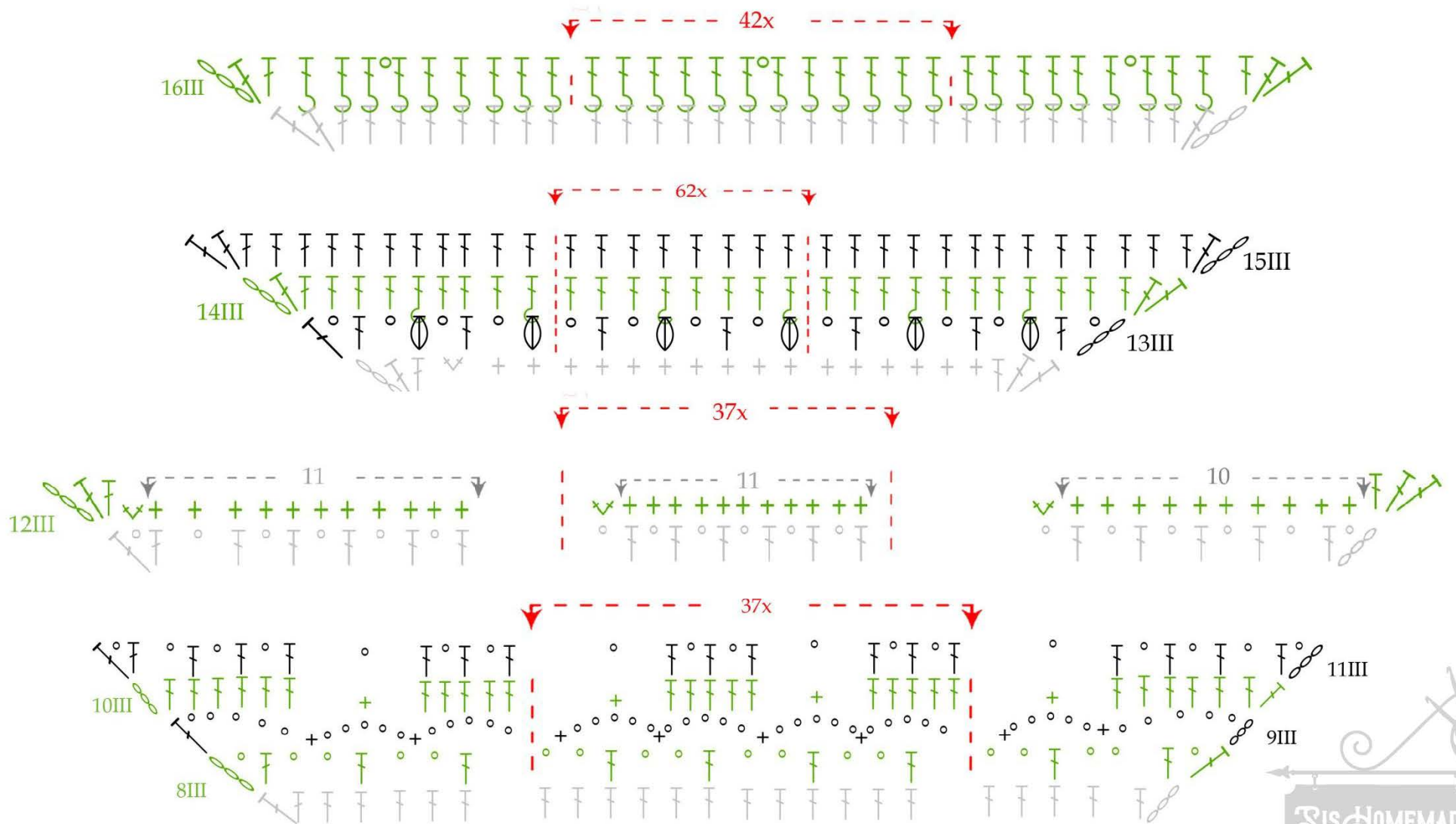
- ▶ Watch the beginning and end of row 31.
- ▶ Watch out for the repeating part in row 30! We make a chain stitch between two dc every other time. (pic.2)



pic.2



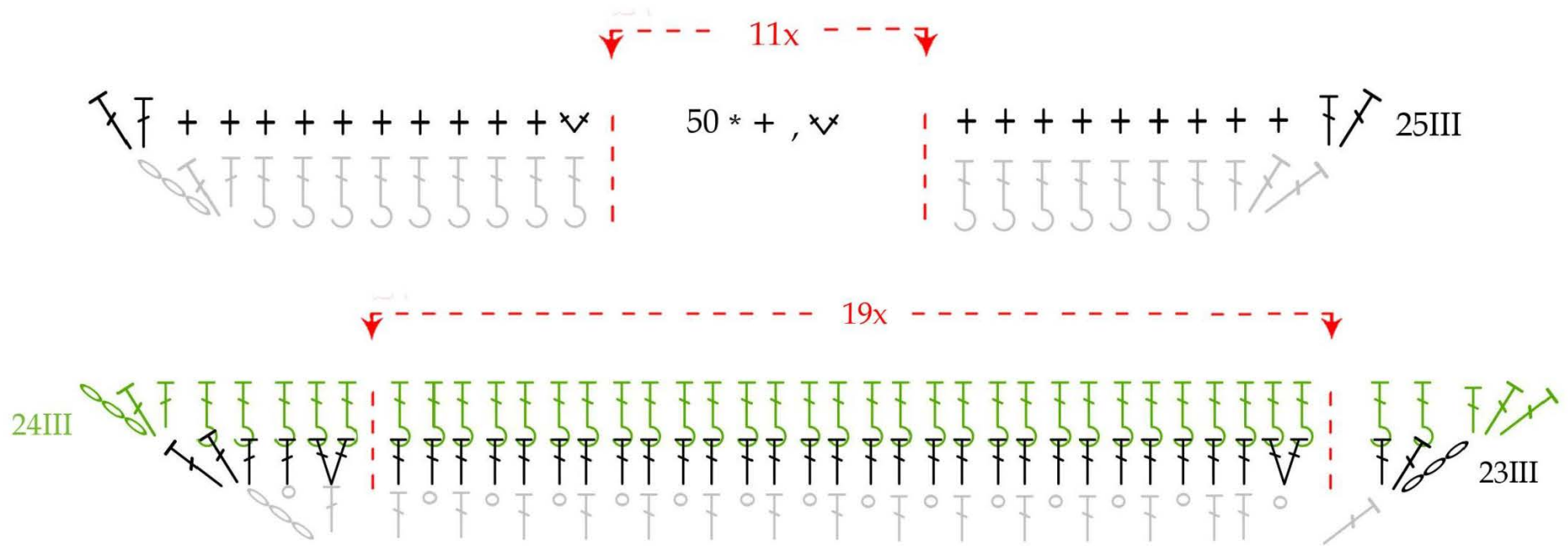
Part III



Note:

- ▶ Watch the beginning and end of rows: 9, 10 & 12
- ▶ Rows 17 - 22 in Part III are the same as in Part I (page 6-7).





Note:

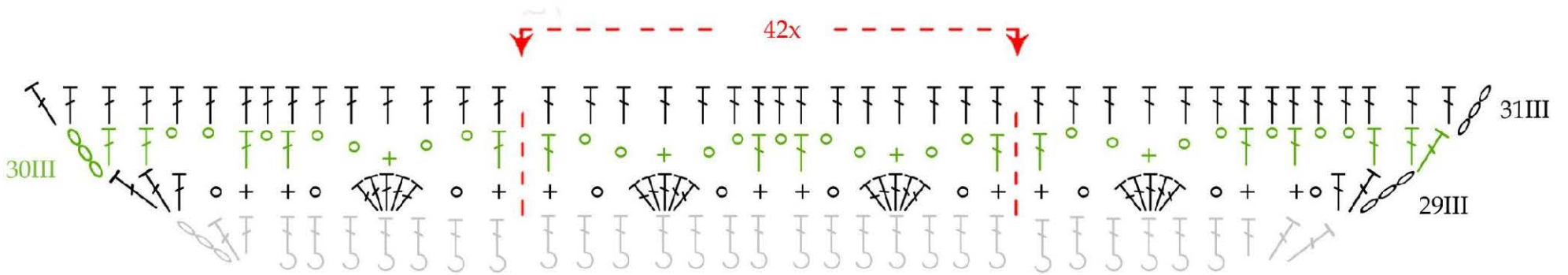
- ▶ Watch the beginning and end of row 25.

50 * + , x - 1 sc in next 50 sts, 2 sc in next 1 st. If you don't like counting, take 12 markers and spread out more or less evenly along the entire length of the row of 22.

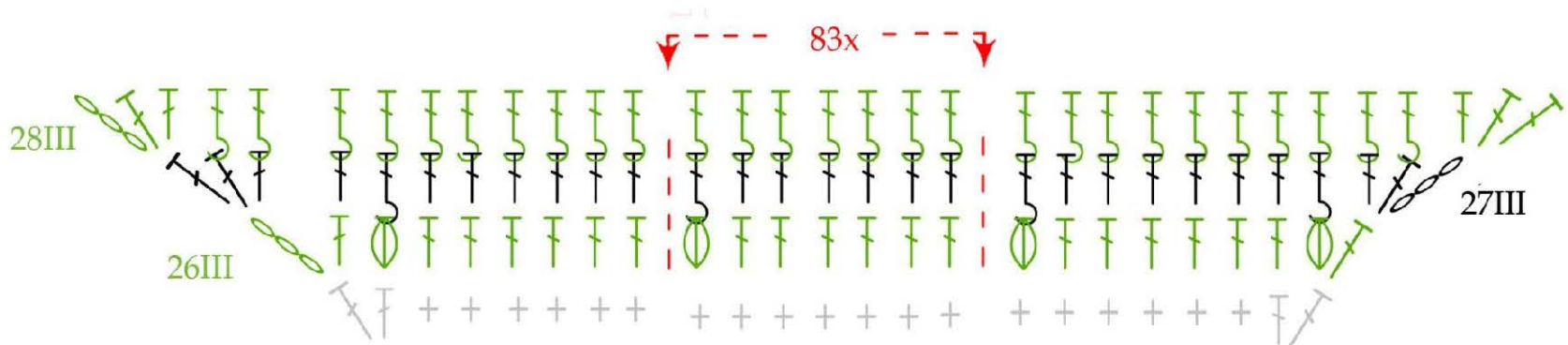
Make 2 sc in 1 stitch in the marked loops and 1 sc each other.

- ▶ In row 23, repeat [1 sc in next 28 sts, 2 sc in next 1 st]. Dc inc is not always done in ch-space.
- ▶ After row 24 you can go to the Border 1 (page 14).



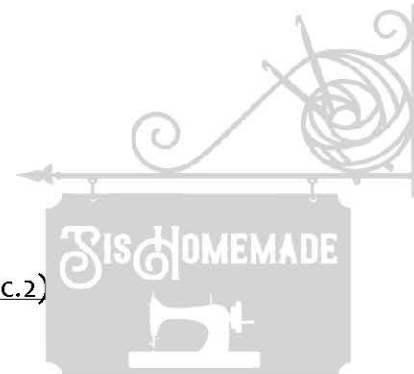


► **NOTE!** If you want to make the Border 3, don't do R. 31III. After 30III go to Border 3. (page 14).



Note:

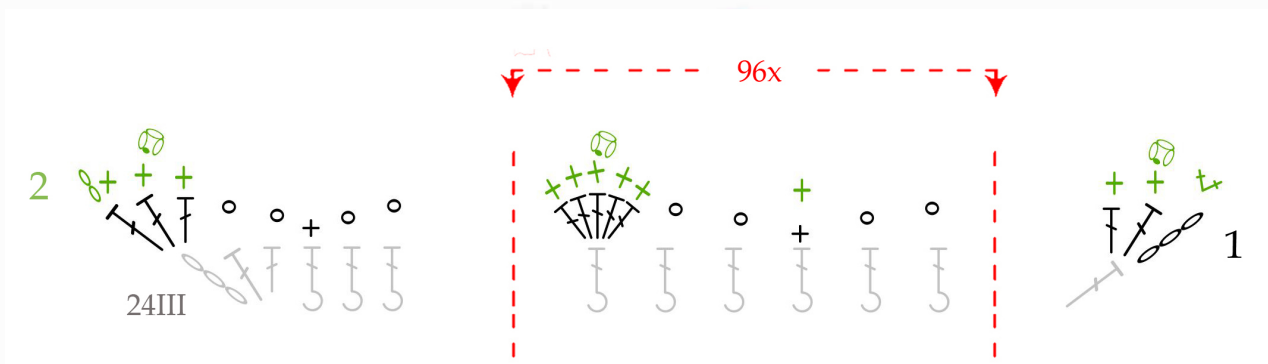
- Watch the beginning and end of rows: 26, 30 & 31.
- Watch out for the repeating part in row 30! We make a chain stitch between two sc every other time. (pic.2)
- After row 31 you can make Border 2 (page 14).



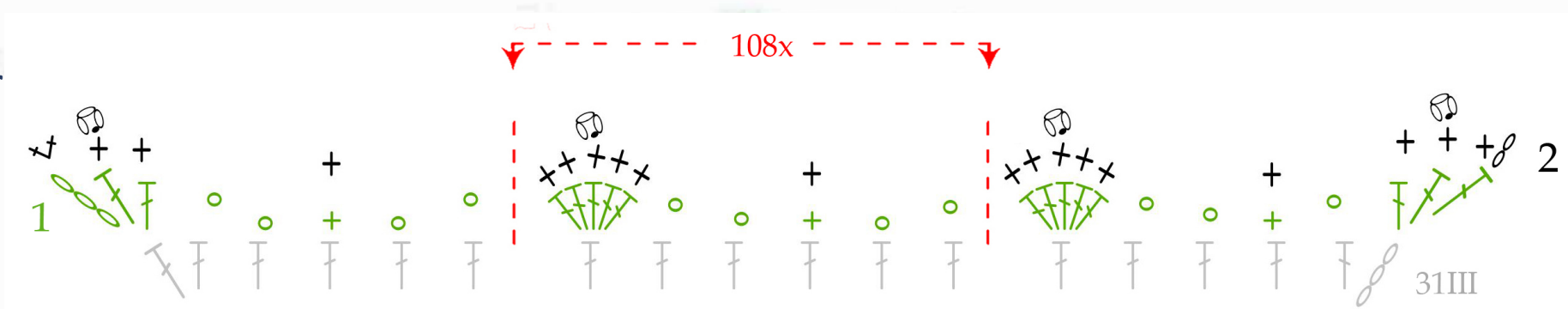


Border

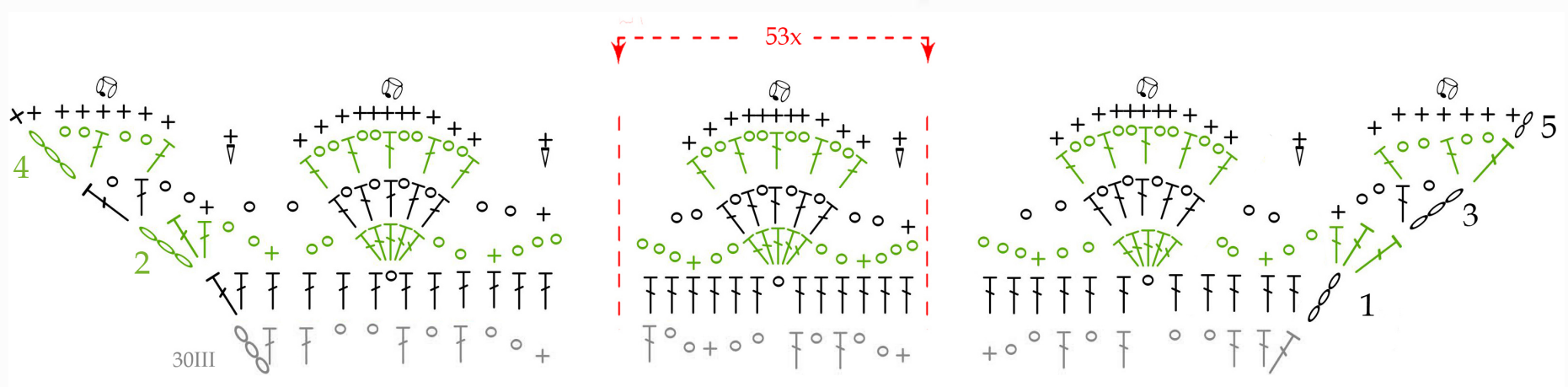
1.



2.



3.



Row	Stitch count in repetition *			Stitches
	1	2	3	
1	13	-	-	dc
3	29	-	-	dc
7	61	-	-	dc + sc + Fpsc
10	87	299	465	dc + sc
12	93	309	512	dc + sc
14	101	315	520	dc+ Fpdc
15	152	356	524	dc
20	175	379	547	dc + Hdc
23	201	389	579	dc
24	205	392	583	dc + Fpdc
25	224	408	597	dc + sc
27	232	414	603	dc + Fpdc
28	236	418	607	dc + Fpdc
31	217*	457	660	dc

*ch 3 at the beginning of the row count as 1 dc.

*this is not a mistake :)

