

# Slite 600 Series

Affordable Gel Doc System with 6M Camera

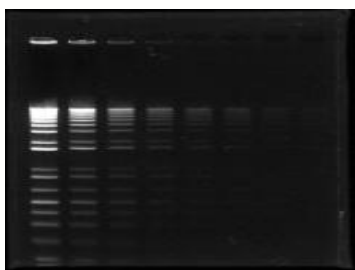


## Features:

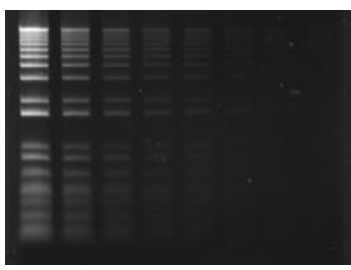
- **6M Resolution camera**<sup>1,2</sup>
- **Multiple light sources: UV**<sup>1,2</sup>, **Cyan**<sup>1</sup>, **Epi white**<sup>1,2</sup> & **white backlight**<sup>1,2</sup>
- **UV light for fluorescent dye-stained DNA (ex. EtBr)/protein (ex. SYPRO Ruby) gel imaging**<sup>1,2</sup>
- **Cyan light for safe dye-stained gel**<sup>1</sup>
- **Easily interchangeable light sources**<sup>1,2</sup>
- **Standalone operation with no PC required**<sup>1,2</sup>
- **Wire connection available for system operation/image capture**<sup>1,2</sup>

<sup>1</sup>: Slite 600C model  
<sup>2</sup>: Slite 600 model

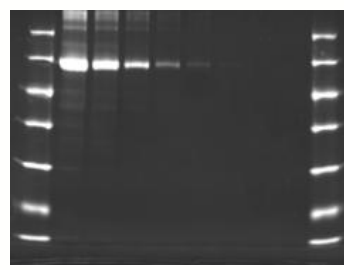
## UV, Cyan, White backlight and Epi white light applications



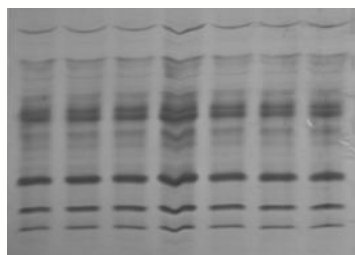
ECO Safe Stain  
(Cyan light)



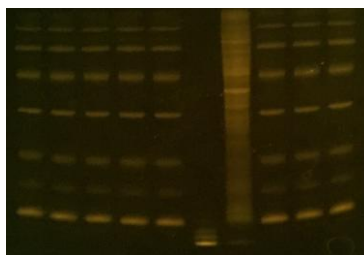
DNA Agarose EtBr Stain  
(UV light)



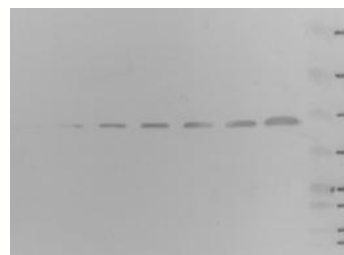
SDS-PAGE SYPRO Ruby  
Stain (UV light)



SDS-PAGE CBB Stain  
(White backlight)



SDS-PAGE Lighting Red  
Stain  
(Cyan light)



HRP/DAB Western Blot  
(Epi white light)

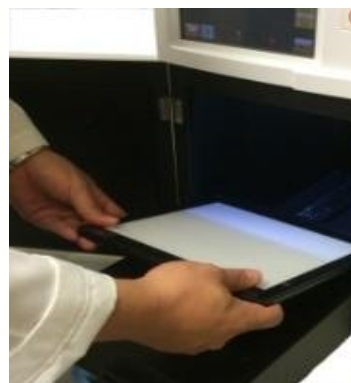
# Slite 600 Series

Affordable Gel Doc System with 6M Camera

## Portable & Easy replacement of light source

### 2 simple steps to change light sources!

1. Place the white light or Epi Cyan light panel on top of UV transilluminator.
2. Connect light panel to UV transilluminator and power on.



Specifications	Slite 600	Slite 600C
Camera sensor	CMOS	
Image Resolution	6 Mega pixels (3096 x 2080)	
Lens Type	6 x Zoom Lens/ Motor-driven Lens	
Focus	Auto Focus, Motorized	
Saving Bit Depth	8, 16 bits/channel	
Exposure Time	0.001 to 10 sec	
UV transilluminator. 302nm	V	V
Epi Cyan 505nm	NA	V
White Light Panel.	V	V
White EPI Light.	V	V
Viewing area	20 x 16 cm	
Filter Turret	Motor-Driven, 6 position	
Emission Filter	590nm	535nm/590nm
Display Panel	8" TFT LCD touch screen / stand alone operation	
Image Format	TIFF, JPEG, BMP	
I/O Port	USB: storage/printing ; Ethernet	
Dimension (WxHxD)	300 x 430 x 600 mm( 11.81 x 16.93 x 23.62 inch)	
Weight	30 Kg (70.75 lb)	