

North Carolina League of Conservation Voters

2016 LEGISLATIVE SCORECARD



TURNING ENVIRONMENTAL VALUES
INTO NORTH CAROLINA PRIORITIES.

A message from our Director...



Dear Conservation Voter,

This year's unusual short session upended our typical Legislative Scorecard. House Bill 2 (HB2), under the smokescreen name "Public Facilities Privacy & Security Act," as well as coal ash cleanup dominated the NC General Assembly's agenda. This temporarily slowed the Legislature's aggressive dismantling of environmental protections with fewer bills passed all around (although it would feel much better to say that such actions halted because legislators finally understood the importance of protecting our clean air and water).

Still, NC Senate leadership found opportunities to propose, discuss, and pass damaging environmental provisions. For the first time in our Scorecard's 16-year history, the NC House did not vote on enough key environmental bills for us to complete a fair evaluation. Therefore, you will see no 2016 scores for NC House members.

Although the entire Legislature did not consider all of this session's anti-conservation provisions, elected officials will likely insert these proposed cuts to environmental protections into bills when the long session begins January 2017. Thus, it remains critical for us to hold legislators accountable for how they voted on these issues in 2016 and earlier.

However, it is not enough to simply hold legislators accountable. We need to vote for leaders who value our environment at all levels of government. This year: think about going beyond voting. Civic engagement must continue outside of the voting booth. When we come together to protect our communities, we can and do win. This November, we will start the conversation, but we must work together for the long-term to reclaim the North Carolina we know and love...and know that our leaders will pass good environmental protections once again because they value healthy air and clean water.

Sincerely,

A handwritten signature in white ink that reads "Carrie". The signature is written in a cursive, flowing style.

Carrie Clark, Executive Director
NC League of Conservation Voters

The Story of the 2016 Short Session

State leaders and special interests wasted little time in pushing proposals to dismantle environmental and public health protections this year. Fortunately, many of the worst provisions were left on the table...for now. We expect to see many of the harmful provisions reappear during the 2017 long session.

THE SLOW DEMISE OF OUR ENVIRONMENT, PEELING OFF ONE PROTECTION AT A TIME

In the last six years, the NC General Assembly has systematically dismantled important environmental safeguards and launched attacks on clean energy development. The NC Senate continued this tradition in 2016 by attacking the environment in two “regulatory reform” bills and by inserting anti-clean water language into its proposed budget.

The legislators who champion these provisions hide behind the guise of being “pro-business” and “pro-military.” In reality, these legislators chose to ignore both science and commonsense in order to move forward the anti-clean energy and anti-environment agenda of special interest groups.

Once again, the Senate refused to implement the Jordan Lake Rules written to address the pollution (largely due to run-off from increasingly developed land) flowing into the lake. The Jordan Lake Rules were designed using proven science during a robust multi-year stakeholder process. Instead, the Senate allocated \$500,000 to study whether freshwater mussels could clean the polluted lake, thus avoiding implementation of the Rules. This proposal falls on the heels of the failed SolarBee experiment, another untested technology that wasted over \$1 million in taxpayer dollars in the process. It appears that the NC Senate leadership does not prioritize providing clean drinking water for nearly 300,000 residents.

“The Jordan Lake Rules were designed using proven science during a robust multi-year stakeholder process. Instead, the Senate allocated \$500,000 to study whether freshwater mussels could clean the polluted lake, thus avoiding implementation of the Rules.”

Not only did Senators show disregard for the constituents they are supposed to represent, they also showed disdain for federal laws protecting U.S. citizens. One introduced bill challenged the Department of Defense (DOD)’s authority to approve state wind energy development projects. Instead, the Senate sought to concentrate the decision-making power in the politically-appointed NC Department of Military and Veterans Affairs. In other bills, Senators introduced provisions directly violating the federal Clean Water Act, such as the proposal to double the minimum distance of stream destruction before requiring mitigation (allowing violators to harm more of the stream before facing penalties and requiring full cleanup). The legislators behind these provisions claim to be fiscally responsible, but exposing North Carolina to expensive lawsuits for violating federal laws hardly seems like the actions of good financial stewards.

MORE SWEETHEART DEALS FOR DUKE ENERGY

After receiving more than 8,000 comments and hosting 15 public hearings across the state in early 2016, the NC Department of Environmental Quality (DEQ) released its recommendations that all coal ash ponds be classified as either intermediate or high-risk, which would have required Duke Energy to excavate and remove coal ash from those sites.

In the midst of the public hearings, the Department of Health and Human Services (DHHS), at the urging of Governor McCrory's office, rescinded the "do not drink" order it placed on household wells near coal ash ponds one month earlier.

This decision caused fear and confusion among residents. State health officials had discovered hexavalent chromium, a heavy metal known to cause cancer, in hundreds of owners' wells near Duke Energy's coal ash ponds.

Why did state officials then take the "do not drink" letters back just 30 days later? According to news reports, State Toxicologist Ken Rudo, under sworn oath, testified that the letters lifting the "do not drink" warnings resulted from DEQ and DHHS administrators overriding the advice of their own staff experts. In a deposition released in August 2016, Rudo stated that this decision was both immoral and unethical; a decision where he fought leadership...and lost.

Back in the NC General Assembly, a bipartisan effort pushed to re-establish the Coal Ash Management Commission in a proposed committee substitute to Senate Bill 71, filed as "Commission Appointment Modifications." SB71 would have reopened DEQ's just released classifications, allowing for further delays in coal ash cleanup. This legislation received support from both DEQ and Duke Energy, but not environmental groups, including NCLCV. While this bill passed both Chambers, Governor McCrory vetoed it, likely because he wanted to ensure his anti-environmental friends at DEQ still maintained control of the coal ash cleanup process, instead of an independent authority that might actually hold Duke Energy accountable.

Then, a new coal ash bill emerged from the legislative mire—a worse bill for North Carolina communities and

“State health officials had discovered hexavalent chromium, a heavy metal known to cause cancer, in hundreds of owners’ wells near Duke Energy’s coal ash ponds.”

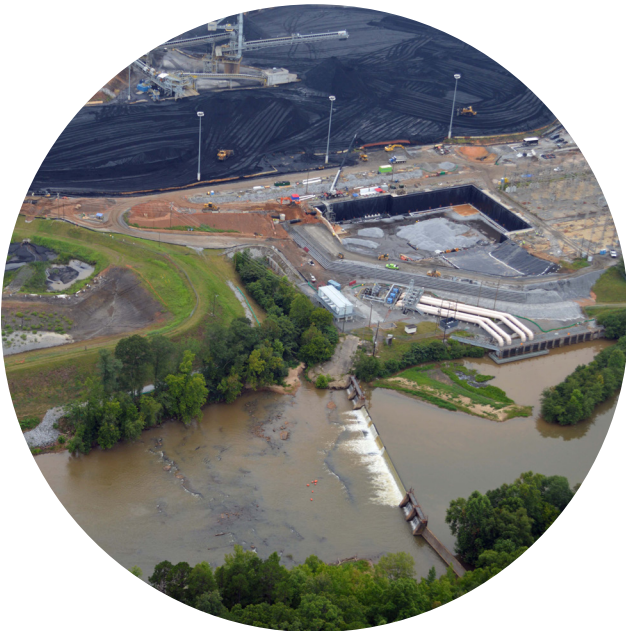
natural resources. It became clear that Duke Energy had mobilized its lobbying armada, working with the McCrory administration and Senate leadership to craft House Bill 630, "Drinking Water Protection/Coal Ash Cleanup Act," or more appropriately titled the **"Duke Energy Protection Act."**

HB630 did not attempt to reinstate the Coal Ash Management Commission. Instead, it requires DEQ to classify some coal ash ponds as low-risk. This nullifies earlier classifications as well as the **8,000 comments and citizen participation at public hearings**. HB630 allows Duke Energy to cap-in-place certain coal ash ponds. This method also has not been proven to stop the flow of pollutants from coal ash ponds into drinking water sources. This bill also requires Duke Energy to provide clean, safe drinking water sources to impacted communities by October 2018. These communities have lived on bottled water for more than 365 days already. What's another 800 days?

Despite a bipartisan effort from 36 legislators to reject the legislation, HB630 passed both Chambers right before session ended. Governor McCrory signed HB630 into law on July 15, 2016. Despite the dysfunction, this administration still found a way to bail out Duke Energy by further delaying coal ash cleanup in North Carolina.



photo credit: Courtesy of Southern Alliance for Clean Energy



“Governor McCrory signed HB630 into law on July 15, 2016, bailing out Duke Energy by further delaying coal ash cleanup in North Carolina.”



The Jordan Lake Rules Saga:

Nearly A Decade of Delays Leave Drinking Water Polluted

- 2003**
NC Department of Environmental Quality (DEQ) conducted 18-month stakeholder process to seek consensus regarding how to address nutrient pollution in Jordan Lake.
- 2005**
DEQ held public meetings and solicited public comments, drafting a Total Maximum Daily Load (TMDL) for Jordan Lake to address the chlorophyll a impairment. DEQ also drafted nutrient management rules.
- 2008**
Rules submitted to the NC Rules Review Commission where many technical revisions were incorporated.
- 2009**
Jordan Lake Nutrient Management Strategy (“Jordan Lake Rules”) established and enacted after legislative review.
- 2011, 2013 & 2015**
NC General Assembly included provisions in multiple bills that further delayed implementation.
- November 2015**
Initial findings show SolarBees in Jordan Lake aren’t working. But, state environmental regulators say effectiveness of the 36 SolarBees won’t be fully known until the end of the four-year pilot program.
- March 2016**
DEQ releases report showing SolarBees aren’t working. Two years and \$1.3 million, DEQ reported the devices were ineffective in reducing pollution.
- June 2016**
Instead of finally implementing the Jordan Lake Rules, NC Senate continues delays with a budget proposal of \$500,000 to study if freshwater mussels can be used to reduce excess nutrients and algae.

What’s next? The 2015-16 budget states that the Jordan Lake Rules will be delayed an additional three years, or until a year after the completion of the SolarBee project, “whichever is later.”

Vote Descriptions

Bill descriptions are based on the text of the legislation at the time the scored vote was cast. Although subsequent amendments or changes in context may have altered the substance of many of the final bills, we believe it is appropriate to describe exactly what the legislators were proposing and voting on at the time, rather than any changes that followed.

SENATE VOTES

[S1] HB 169 2nd Reading *Regulatory Reduction Act of 2016*

This bill language placed arbitrary spending limits on government agencies when making rules protecting public health and safety. Additionally, this bill proposed ending NC's successful e-recycling program and removing beneficial energy-efficiency standards.

Passed 2nd Reading 30-15. Pro-conservation vote: NO.

[S2] SB 770 3rd Reading *NC Farm Act of 2016*

This bill sought to exempt farms from water consumption limits in areas with low water levels. SB770 also would have created a loophole in sedimentation (pollution) controls critical for preserving North Carolina's quality of water.

Passed 3rd Reading 44-3. Pro-conservation vote: NO.

[S3] HB 763 3rd Reading *Military Operations Protection Act of 2016*

This bill aimed to place unreasonable restrictions on the state's wind energy permitting process. As written, the bill would have usurped the Department of Defense's power to approve wind turbine permits and instead give that authority to the NC Department of Military and Veterans Affairs, a group of political appointees.

Passed 3rd Reading 33-14. Pro-conservation vote: NO.

[S4] HB 593 2nd Reading *Amend Environmental & Other Laws*

This bill would have allowed businesses to cut corners on various stormwater management and stream mitigation rules, violating the federal Clean Water Act. HB593 would also have allowed the use of low-quality sand in beach nourishment efforts and the carte blanche use of landfill leachate aerosolizing (spraying liquefied garbage) as a means to manage landfill wastewater with potentially hazardous effects.

Passed 2nd Reading 27-16. Pro-conservation vote: NO

[S5] HB 630 2nd Reading *Drinking Water Protection / Coal Ash Cleanup Act*

This bill delays coal ash cleanup, requires NC Department of Environmental Quality (DEQ) to reclassify some ponds as "low-risk" and allows Duke Energy to cap ponds in place. This is a sweetheart deal for Duke Energy.

Passed 2nd Reading 44-4. Pro-conservation vote: NO.

[S6] HB 1030 2nd Reading *2016 Appropriations Act*

The original Senate budget would have eliminated rules designed to protect multiple drinking water reservoirs and lakes across the state from pollution. The Senate proposed replacing scientifically-based, stakeholder-created strategies with a \$500,000 study to determine whether freshwater mussels could purify the already-polluted Jordan Lake. Additionally, the Senate's budget targeted construction of the Durham-Chapel Hill light rail system by placing a restriction on the amount of funding a project can receive from the state.

Final vote 33-15. Pro-conservation Vote: NO.



photo credit: Sound Rivers

HOW TO READ THE SCORECARD

NCLCV's Legislative Scorecard records members' votes on selected bills throughout the 2016 Legislative Session. While it is not a comprehensive list of all session votes, the Scorecard provides a record of the most significant votes cast on bills and amendments with the greatest environmental impact.

This was an atypical year in the General Assembly. After years of nearly a dozen votes in both the House and Senate on critical environmental issues, we saw only six votes in the Senate and one in the House. Is this a sign of legislative dysfunction, or perhaps members are running out of environmental protections to repeal? Given that the House only voted on one noteworthy bill, which would have resulted in a member score of either 100% or 0%, we decided to forgo scoring state representatives. Also, given the unusual few votes in the Senate, 2016 scores may not reflect each Senator's true stance on environmental issues. We encourage readers to put more weight on these lifetime scores. For more information, and to review past Legislative Scorecards, visit nclcv.org.

One final note: the Scorecard is only one tool to evaluate our legislators. Despite the importance of legislators' votes, the Scorecard cannot represent the full complexity of what it takes to be an environmental champion.

“This was an atypical year in the General Assembly. After years of nearly a dozen votes in both the House and Senate on critical environmental issues, we saw only six votes in the Senate and one in the House.”

- 0** Anti-conservation vote
- ▲** Pro-conservation vote
- NV** Missed vote counted as anti-conservation vote
- E** Excused absence/vote not scored

HOUSE SCORES

Alamance

Riddell (R) House District - 64

2015 Scores %	2013-2014 Average %	Lifetime %
0	0	0

Ross (R) House District - 63

2015 Scores %	2013-2014 Average %	Lifetime %
9	0	4

Alexander

Zachary (R) House District - 73

2015 Scores %	2013-2014 Average %	Lifetime %
10	NA	10

Alleghany

Elmore (R) House District - 94

2015 Scores %	2013-2014 Average %	Lifetime %
0	0	0

Anson

Brody (R) House District - 55

2015 Scores %	2013-2014 Average %	Lifetime %
0	4	3

Ashe

Jordan (R) House District - 93

2015 Scores %	2013-2014 Average %	Lifetime %
18	4	13

Avery

Dobson (R) House District - 85

2015 Scores %	2013-2014 Average %	Lifetime %
9	15	13

Beaufort

Speciale (R) House District - 3

2015 Scores %	2013-2014 Average %	Lifetime %
9	15	13

Tine (U) House District - 6

2015 Scores %	2013-2014 Average %	Lifetime %
11	62	44

Bertie

Hunter (D) House District - 5

2015 Scores %	2013-2014 Average %	Lifetime %
60	NA	60

Bladen

Brisson (D) House District - 22

2015 Scores %	2013-2014 Average %	Lifetime %
14	24	37

Waddell (D) House District - 46

2015 Scores %	2013-2014 Average %	Lifetime %
9	60	41

Brunswick

Hamilton (D) House District - 18

2015 Scores %	2013-2014 Average %	Lifetime %
50	65	64

Iler (R) House District - 17

2015 Scores %	2013-2014 Average %	Lifetime %
0	0	13

Buncombe

Ager (D) House District - 115

2015 Scores %	2013-2014 Average %	Lifetime %
100	NA	100

Fisher (D) House District - 114

2015 Scores %	2013-2014 Average %	Lifetime %
100	100	95

Turner, B. (D) House District - 116

2015 Scores %	2013-2014 Average %	Lifetime %
100	NA	100

Burke

Blackwell (R) House District - 86

2015 Scores %	2013-2014 Average %	Lifetime %
9	20	20

Hager (R) House District - 112

2015 Scores %	2013-2014 Average %	Lifetime %
9	0	7

Cabarrus

Ford (R) House District - 76

2015 Scores %	2013-2014 Average %	Lifetime %
0	4	3

Johnson, L. (R) House District - 83

2015 Scores %	2013-2014 Average %	Lifetime %
9	0	38

Pittman (R) House District - 82

2015 Scores %	2013-2014 Average %	Lifetime %
0	18	9

Caldwell

Robinson (R) House District - 87

2015 Scores %	2013-2014 Average %	Lifetime %
9	NA	9

Camden

Steinburg (R) House District - 1

2015 Scores %	2013-2014 Average %	Lifetime %
0	15	10

Carteret

McElraft (R) House District - 13

2015 Scores %	2013-2014 Average %	Lifetime %
0	0	20

Caswell

Jones (R) House District - 65

2015 Scores %	2013-2014 Average %	Lifetime %
0	0	6

Catawba

Adams (R) House District - 96

2015 Scores %	2013-2014 Average %	Lifetime %
9	INC	9

Setzer (R) House District - 89

2015 Scores %	2013-2014 Average %	Lifetime %
18	19	35

Chatham

Reives (D) House District - 54

2015 Scores %	2013-2014 Average %	Lifetime %
100	INC	87

Cherokee**West (R) House District - 120**

2015 Scores %	2013-2014 Average %	Lifetime %
9	0	26

Chowan**Steinburg (R) House District - 1**

2015 Scores %	2013-2014 Average %	Lifetime %
0	15	10

Clay**West (R) House District - 120**

2015 Scores %	2013-2014 Average %	Lifetime %
9	0	26

Cleveland**Hastings (R) House District - 110**

2015 Scores %	2013-2014 Average %	Lifetime %
0	0	4

Moore, T. (R) House District - 111

2015 Scores %	2013-2014 Average %	Lifetime %
0	0	27

Columbus**Waddell (D) House District - 46**

2015 Scores %	2013-2014 Average %	Lifetime %
9	60	41

Craven**Bell, J. (R) House District - 10**

2015 Scores %	2013-2014 Average %	Lifetime %
0	0	0

Graham, G. (D) House District - 12

2015 Scores %	2013-2014 Average %	Lifetime %
82	83	81

Speciale (R) House District - 3

2015 Scores %	2013-2014 Average %	Lifetime %
9	15	13

Cumberland**Floyd (D) House District - 43**

2015 Scores %	2013-2014 Average %	Lifetime %
64	57	74

Lucas (D) House District - 42

2015 Scores %	2013-2014 Average %	Lifetime %
70	71	75

Richardson, W. (D) House District - 44

2015 Scores %	2013-2014 Average %	Lifetime %
NA	NA	NA

Szoka (R) House District - 45

2015 Scores %	2013-2014 Average %	Lifetime %
18	0	6

Currituck**Steinburg (R) House District - 1**

2015 Scores %	2013-2014 Average %	Lifetime %
0	15	10

Dare**Tine (U) House District - 6**

2015 Scores %	2013-2014 Average %	Lifetime %
11	62	44

Davidson**Brown, R. (R) House District - 81**

2015 Scores %	2013-2014 Average %	Lifetime %
0	6	7

Watford (R) House District - 80

2015 Scores %	2013-2014 Average %	Lifetime %
9	NA	9

Davie**Howard (R) House District - 79**

2015 Scores %	2013-2014 Average %	Lifetime %
10	4	41

Duplin**Bell, L. (D) House District - 21**

2015 Scores %	2013-2014 Average %	Lifetime %
56	72	72

Dixon (R) House District - 4

2015 Scores %	2013-2014 Average %	Lifetime %
0	0	5

Durham**Hall, L. (D) House District - 29**

2015 Scores %	2013-2014 Average %	Lifetime %
100	100	98

Luebke (D) House District - 30

2015 Scores %	2013-2014 Average %	Lifetime %
100	100	99

Meyer (D) House District - 50

2015 Scores %	2013-2014 Average %	Lifetime %
90	INC	91

Michaux (D) House District - 31

2015 Scores %	2013-2014 Average %	Lifetime %
73	92	81

Edgecombe**Willingham (D) House District - 23**

2015 Scores %	2013-2014 Average %	Lifetime %
100	NA	94

Forsyth**Conrad (R) House District - 74**

2015 Scores %	2013-2014 Average %	Lifetime %
0	6	3

Hanes (D) House District - 72

2015 Scores %	2013-2014 Average %	Lifetime %
82	78	79

Howard (R) House District - 79

2015 Scores %	2013-2014 Average %	Lifetime %
10	4	41

Lambeth (R) House District - 75

2015 Scores %	2013-2014 Average %	Lifetime %
0	0	0

Terry (D) House District - 71

2015 Scores %	2013-2014 Average %	Lifetime %
100	95	97

Franklin**Collins (R) House District - 25**

2015 Scores %	2013-2014 Average %	Lifetime %
0	0	4

Franklin**Richardson, B. (D) House District - 7**

2015 Scores %	2013-2014 Average %	Lifetime %
100	90	93

Gaston**Bumgardner (R) House District - 109**

2015 Scores %	2013-2014 Average %	Lifetime %
0	0	0

Hastings (R) House District - 110

2015 Scores %	2013-2014 Average %	Lifetime %
0	0	4

Torbett (R) House District - 108

2015 Scores %	2013-2014 Average %	Lifetime %
9	0	7

Gates**Hunter (D) House District - 5**

2015 Scores %	2013-2014 Average %	Lifetime %
60	NA	60

Graham**West (R) House District - 120**

2015 Scores %	2013-2014 Average %	Lifetime %
9	0	26

Granville**Baskerville (D) House District - 32**

2015 Scores %	2013-2014 Average %	Lifetime %
91	88	87

Yarborough (R) House District - 2

2015 Scores %	2013-2014 Average %	Lifetime %
9	NA	9

Greene**Bell, J. (R) House District - 10**

2015 Scores %	2013-2014 Average %	Lifetime %
0	0	0

Graham, G. (D) House District - 12

2015 Scores %	2013-2014 Average %	Lifetime %
82	83	81

Guilford**Blust (R) House District - 62**

2015 Scores %	2013-2014 Average %	Lifetime %
0	13	34

Brockman (D) House District - 60

2015 Scores %	2013-2014 Average %	Lifetime %
82	NA	82

Faircloth (R) House District - 61

2015 Scores %	2013-2014 Average %	Lifetime %
9	0	5

Hardister (R) House District - 59

2015 Scores %	2013-2014 Average %	Lifetime %
0	4	3

Harrison (D) House District - 57

2015 Scores %	2013-2014 Average %	Lifetime %
100	100	100

Sgro (D) House District - 58

2015 Scores %	2013-2014 Average %	Lifetime %
NA	NA	NA

Halifax**Wray (D) House District - 27**

2015 Scores %	2013-2014 Average %	Lifetime %
27	83	70

Harnett**Lewis (R) House District - 53**

2015 Scores %	2013-2014 Average %	Lifetime %
9	4	32

Salmon (D) House District - 51

2015 Scores %	2013-2014 Average %	Lifetime %
89	NA	89

Haywood**Presnell (R) House District - 118**

2015 Scores %	2013-2014 Average %	Lifetime %
0	0	0

Queen (D) House District - 119

2015 Scores %	2013-2014 Average %	Lifetime %
89	80	81

Henderson**McGrady (R) House District - 117**

2015 Scores %	2013-2014 Average %	Lifetime %
44	53	60

Whitmire (R) House District - 113

2015 Scores %	2013-2014 Average %	Lifetime %
0	0	0

Hertford**Hunter (D) House District - 5**

2015 Scores %	2013-2014 Average %	Lifetime %
60	NA	60

Hoke**Goodman (D) House District - 66**

2015 Scores %	2013-2014 Average %	Lifetime %
18	39	51

Pierce (D) House District - 48

2015 Scores %	2013-2014 Average %	Lifetime %
82	88	80

Hyde**Tine (U) House District - 6**

2015 Scores %	2013-2014 Average %	Lifetime %
11	62	44

Iredell**Fraleigh (R) House District - 95**

2015 Scores %	2013-2014 Average %	Lifetime %
9	NA	9

Turner, R. (R) House District - 84

2015 Scores %	2013-2014 Average %	Lifetime %
9	0	3

Jackson**Queen (D) House District - 119**

2015 Scores %	2013-2014 Average %	Lifetime %
89	80	81

Johnston**Brisson (D) House District - 22**

2015 Scores %	2013-2014 Average %	Lifetime %
14	24	37

Johnston**Daughtry (R) House District - 26**

2015 Scores %	2013-2014 Average %	Lifetime %
9	5	35

Langdon (R) House District - 28

2015 Scores %	2013-2014 Average %	Lifetime %
11	5	30

Jones**McElraft (R) House District - 13**

2015 Scores %	2013-2014 Average %	Lifetime %
0	0	20

Lee**Reives (D) House District - 54**

2015 Scores %	2013-2014 Average %	Lifetime %
100	INC	87

Salmon (D) House District - 51

2015 Scores %	2013-2014 Average %	Lifetime %
89	NA	89

Lenoir**Bell, J. (R) House District - 10**

2015 Scores %	2013-2014 Average %	Lifetime %
0	0	0

Graham, G. (D) House District - 12

2015 Scores %	2013-2014 Average %	Lifetime %
82	83	81

Lincoln**Saine (R) House District - 97**

2015 Scores %	2013-2014 Average %	Lifetime %
13	4	5

Macon**West (R) House District - 120**

2015 Scores %	2013-2014 Average %	Lifetime %
9	0	26

Madison**Presnell (R) House District - 118**

2015 Scores %	2013-2014 Average %	Lifetime %
0	0	0

Martin**Willingham (D) House District - 23**

2015 Scores %	2013-2014 Average %	Lifetime %
100	NA	94

McDowell**Dobson (R) House District - 85**

2015 Scores %	2013-2014 Average %	Lifetime %
9	15	13

Mecklenburg**Alexander (D) House District - 107**

2015 Scores %	2013-2014 Average %	Lifetime %
64	75	78

Bishop (R) House District - 104

2015 Scores %	2013-2014 Average %	Lifetime %
0	NA	0

Bradford (R) House District - 98

2015 Scores %	2013-2014 Average %	Lifetime %
9	NA	9

Brawley, W. (R) House District - 103

2015 Scores %	2013-2014 Average %	Lifetime %
18	0	9

Bryan (R) House District - 88

2015 Scores %	2013-2014 Average %	Lifetime %
11	0	4

Carney (D) House District - 102

2015 Scores %	2013-2014 Average %	Lifetime %
71	72	79

Cotham (D) House District - 100

2015 Scores %	2013-2014 Average %	Lifetime %
64	54	78

Cunningham (D) House District - 106

2015 Scores %	2013-2014 Average %	Lifetime %
91	83	83

Earle (D) House District - 101

2015 Scores %	2013-2014 Average %	Lifetime %
78	79	76

Jeter (R) House District - 92

2015 Scores %	2013-2014 Average %	Lifetime %
36	16	23

Moore, R. (D) House District - 99

2015 Scores %	2013-2014 Average %	Lifetime %
27	56	57

Schaffer (R) House District - 105

2015 Scores %	2013-2014 Average %	Lifetime %
10	0	3

Mitchell**Dobson (R) House District - 85**

2015 Scores %	2013-2014 Average %	Lifetime %
9	15	13

Montgomery**Burr (R) House District - 67**

2015 Scores %	2013-2014 Average %	Lifetime %
10	0	14

Goodman (D) House District - 66

2015 Scores %	2013-2014 Average %	Lifetime %
18	39	51

Moore**Boles (R) House District - 52**

2015 Scores %	2013-2014 Average %	Lifetime %
0	0	11

McNeill (R) House District - 78

2015 Scores %	2013-2014 Average %	Lifetime %
0	4	3

Nash**Collins (R) House District - 25**

2015 Scores %	2013-2014 Average %	Lifetime %
0	0	4

Richardson, B. (D) House District - 7

2015 Scores %	2013-2014 Average %	Lifetime %
100	90	93

New Hanover**Catlin (R) House District - 20**

2015 Scores %	2013-2014 Average %	Lifetime %
20	18	19

Davis (R) House District - 19

2015 Scores %	2013-2014 Average %	Lifetime %
10	6	5

Hamilton (D) House District - 18

2015 Scores %	2013-2014 Average %	Lifetime %
50	65	64

Northampton**Wray (D) House District - 27**

2015 Scores %	2013-2014 Average %	Lifetime %
27	83	70

Onslow**Cleveland (R) House District - 14**

2015 Scores %	2013-2014 Average %	Lifetime %
11	5	28

Millis (R) House District - 16

2015 Scores %	2013-2014 Average %	Lifetime %
0	0	0

Shepard (R) House District - 15

2015 Scores %	2013-2014 Average %	Lifetime %
0	4	6

Orange**Insko (D) House District - 56**

2015 Scores %	2013-2014 Average %	Lifetime %
100	100	98

Meyer (D) House District - 50

2015 Scores %	2013-2014 Average %	Lifetime %
90	INC	91

Pamlico**Speciale (R) House District - 3**

2015 Scores %	2013-2014 Average %	Lifetime %
9	15	13

Pasquotank**Hunter (D) House District - 5**

2015 Scores %	2013-2014 Average %	Lifetime %
60	NA	60

Steinburg (R) House District - 1

2015 Scores %	2013-2014 Average %	Lifetime %
0	15	10

Pender**Millis (R) House District - 16**

2015 Scores %	2013-2014 Average %	Lifetime %
0	0	0

Perquimans**Steinburg (R) House District - 1**

2015 Scores %	2013-2014 Average %	Lifetime %
0	15	10

Person**Yarborough (R) House District - 2**

2015 Scores %	2013-2014 Average %	Lifetime %
9	NA	9

Pitt**Farmer-Butterfield (D) House District - 24**

2015 Scores %	2013-2014 Average %	Lifetime %
100	90	86

Martin, S. (R) House District - 8

2015 Scores %	2013-2014 Average %	Lifetime %
9	0	3

Murphy (R) House District - 9

2015 Scores %	2013-2014 Average %	Lifetime %
NA	NA	NA

Polk**Whitmire (R) House District - 113**

2015 Scores %	2013-2014 Average %	Lifetime %
0	0	0

Randolph**Hurley (R) House District - 70**

2015 Scores %	2013-2014 Average %	Lifetime %
0	4	27

McNeill (R) House District - 78

2015 Scores %	2013-2014 Average %	Lifetime %
0	4	3

Richmond**Goodman (D) House District - 66**

2015 Scores %	2013-2014 Average %	Lifetime %
18	39	51

Pierce (D) House District - 48

2015 Scores %	2013-2014 Average %	Lifetime %
82	88	80

Robeson**Goodman (D) House District - 66**

2015 Scores %	2013-2014 Average %	Lifetime %
18	39	51

Graham, C. (D) House District - 47

2015 Scores %	2013-2014 Average %	Lifetime %
40	96	81

Pierce (D) House District - 48

2015 Scores %	2013-2014 Average %	Lifetime %
82	88	80

Waddell (D) House District - 46

2015 Scores %	2013-2014 Average %	Lifetime %
9	60	41

Rockingham**Hall, K. (R) House District - 91**

2015 Scores %	2013-2014 Average %	Lifetime %
NA	NA	NA

Jones (R) House District - 65

2015 Scores %	2013-2014 Average %	Lifetime %
0	0	6

Rowan**Ford (R) House District - 76**

2015 Scores %	2013-2014 Average %	Lifetime %
0	4	3

Warren (R) House District - 77

2015 Scores %	2013-2014 Average %	Lifetime %
0	0	4

Rutherford**Hager (R) House District - 112**

2015 Scores %	2013-2014 Average %	Lifetime %
9	0	7

Sampson**Bell, L. (D) House District - 21**

2015 Scores %	2013-2014 Average %	Lifetime %
56	72	72

Brisson (D) House District - 22

2015 Scores %	2013-2014 Average %	Lifetime %
14	24	37

Scotland**Goodman (D) House District - 66**

2015 Scores %	2013-2014 Average %	Lifetime %
18	39	51

Pierce (D) House District - 48

2015 Scores %	2013-2014 Average %	Lifetime %
82	88	80

Stanly**Burr (R) House District - 67**

2015 Scores %	2013-2014 Average %	Lifetime %
10	0	14

Stokes**Hall, K. (R) House District - 91**

2015 Scores %	2013-2014 Average %	Lifetime %
NA	NA	NA

Surry**Stevens (R) House District - 90**

2015 Scores %	2013-2014 Average %	Lifetime %
11	4	17

Swain**Queen (D) House District - 119**

2015 Scores %	2013-2014 Average %	Lifetime %
89	80	81

Transylvania**Whitmire (R) House District - 113**

2015 Scores %	2013-2014 Average %	Lifetime %
0	0	0

Tyrrell**Steinburg (R) House District - 1**

2015 Scores %	2013-2014 Average %	Lifetime %
0	15	10

Union**Arp (R) House District - 69**

2015 Scores %	2013-2014 Average %	Lifetime %
9	0	3

Union**Brody (R) House District - 55**

2015 Scores %	2013-2014 Average %	Lifetime %
0	4	3

Horn (R) House District - 68

2015 Scores %	2013-2014 Average %	Lifetime %
18	5	11

Vance**Baskerville (D) House District - 32**

2015 Scores %	2013-2014 Average %	Lifetime %
91	88	87

Wake**Adcock (D) House District - 41**

2015 Scores %	2013-2014 Average %	Lifetime %
82	NA	82

Avila (R) House District - 40

2015 Scores %	2013-2014 Average %	Lifetime %
0	8	20

Dollar (R) House District - 36

2015 Scores %	2013-2014 Average %	Lifetime %
18	10	37

Gill (D) House District - 33

2015 Scores %	2013-2014 Average %	Lifetime %
100	95	94

Hall, D. (D) House District - 11

2015 Scores %	2013-2014 Average %	Lifetime %
91	100	97

Holley (D) House District - 38

2015 Scores %	2013-2014 Average %	Lifetime %
91	86	87

Jackson (D) House District - 39

2015 Scores %	2013-2014 Average %	Lifetime %
80	71	81

Malone (R) House District - 35

2015 Scores %	2013-2014 Average %	Lifetime %
0	17	13

Martin, G. (D) House District - 34

2015 Scores %	2013-2014 Average %	Lifetime %
100	100	97

Pendleton (R) House District - 49

2015 Scores %	2013-2014 Average %	Lifetime %
0	NA	0

Stam (R) House District - 37

2015 Scores %	2013-2014 Average %	Lifetime %
9	8	37

Warren**Baskerville (D) House District - 32**

2015 Scores %	2013-2014 Average %	Lifetime %
91	88	87

Washington**Tine (U) House District - 6**

2015 Scores %	2013-2014 Average %	Lifetime %
11	62	44

Watauga**Jordan (R) House District - 93**

2015 Scores %	2013-2014 Average %	Lifetime %
18	4	13

Wayne**Bell, J. (R) House District - 10**

2015 Scores %	2013-2014 Average %	Lifetime %
0	0	0

Wayne

Bell, L. (D) House District - 21

2015 Scores %	2013-2014 Average %	Lifetime %
56	72	72

Dixon (R) House District - 4

2015 Scores %	2013-2014 Average %	Lifetime %
0	0	5

Wilkes

Elmore (R) House District - 94

2015 Scores %	2013-2014 Average %	Lifetime %
0	0	0

Stevens (R) House District - 90

2015 Scores %	2013-2014 Average %	Lifetime %
11	4	17

Zachary (R) House District - 73

2015 Scores %	2013-2014 Average %	Lifetime %
10	NA	10

Wilson

Farmer-Butterfield (D) House District - 24

2015 Scores %	2013-2014 Average %	Lifetime %
100	90	86

Martin, S. (R) House District - 8

2015 Scores %	2013-2014 Average %	Lifetime %
9	0	3

Yadkin

Zachary (R) House District - 73

2015 Scores %	2013-2014 Average %	Lifetime %
10	NA	10

Yancey

Presnell (R) House District - 118

2015 Scores %	2013-2014 Average %	Lifetime %
0	0	0

SENATE SCORES

Alamance

Gunn (R) Senate District - 24

2016 Scores %	2015 Scores %	2013-2014 Average %	Lifetime %	S1	S2	S3	S4	S5	S6
0	0	0	2	0	0	0	0	0	0

Alexander

Wells (R) Senate District - 42

2016 Scores %	2015 Scores %	2013-2014 Average %	Lifetime %	S1	S2	S3	S4	S5	S6
0	0	7	3	0	0	0	0	0	0

Alleghany

Ballard (R) Senate District - 45

2016 Scores %	2015 Scores %	2013-2014 Average %	Lifetime %	S1	S2	S3	S4	S5	S6
0	NA	NA	0	0	0	0	0	0	0

Anson

McInnis (R) Senate District - 25

2016 Scores %	2015 Scores %	2013-2014 Average %	Lifetime %	S1	S2	S3	S4	S5	S6
0	0	NA	0	0	0	0	0	0	0

Ashe

Ballard (R) Senate District - 45

2016 Scores %	2015 Scores %	2013-2014 Average %	Lifetime %	S1	S2	S3	S4	S5	S6
0	NA	NA	0	0	0	0	0	0	0

Avery

Ballard (R) Senate District - 45

2016 Scores %	2015 Scores %	2013-2014 Average %	Lifetime %	S1	S2	S3	S4	S5	S6
0	NA	NA	0	0	0	0	0	0	0

Beaufort

Cook (R) Senate District - 1

2016 Scores %	2015 Scores %	2013-2014 Average %	Lifetime %	S1	S2	S3	S4	S5	S6
0	0	5	5	0	0	0	0	0	0

Bertie

Smith-Ingram (D) Senate District - 3

2016 Scores %	2015 Scores %	2013-2014 Average %	Lifetime %	S1	S2	S3	S4	S5	S6
67	78	NA	73	▲	0	▲	▲	0	▲

Bladen

Rabon (R) Senate District - 8

2016 Scores %	2015 Scores %	2013-2014 Average %	Lifetime %	S1	S2	S3	S4	S5	S6
0	0	0	2	0	0	0	0	0	0

Brunswick

Rabon (R) Senate District - 8

2016 Scores %	2015 Scores %	2013-2014 Average %	Lifetime %	S1	S2	S3	S4	S5	S6
0	0	0	2	0	0	0	0	0	0

Buncombe

Apodaca (R) Senate District - 48

2016 Scores %	2015 Scores %	2013-2014 Average %	Lifetime %	S1	S2	S3	S4	S5	S6
0	0	0	31	0	0	0	0	0	0

Van Duyn (D) Senate District - 49

2016 Scores %	2015 Scores %	2013-2014 Average %	Lifetime %	S1	S2	S3	S4	S5	S6
67	100	100	93	▲	▲	▲	NV	0	▲

Burke

Daniel (R) Senate District - 46

2016 Scores %	2015 Scores %	2013-2014 Average %	Lifetime %	S1	S2	S3	S4	S5	S6
0	0	5	5	0	E	E	E	0	0

Cabarrus**Hartsell (R) Senate District - 36**

2016 Scores %	2015 Scores %	2013-2014 Average %	Lifetime %	S1	S2	S3	S4	S5	S6
20	33	INC	55	E	0	▲	0	0	0

Caldwell**Ballard (R) Senate District - 45**

2016 Scores %	2015 Scores %	2013-2014 Average %	Lifetime %	S1	S2	S3	S4	S5	S6
0	NA	NA	0	0	0	0	0	0	0

Camden**Cook (R) Senate District - 1**

2016 Scores %	2015 Scores %	2013-2014 Average %	Lifetime %	S1	S2	S3	S4	S5	S6
0	0	5	5	0	0	0	0	0	0

Carteret**Sanderson (R) Senate District - 2**

2016 Scores %	2015 Scores %	2013-2014 Average %	Lifetime %	S1	S2	S3	S4	S5	S6
0	0	0	3	0	0	0	0	0	0

Caswell**Woodard (D) Senate District - 22**

2016 Scores %	2015 Scores %	2013-2014 Average %	Lifetime %	S1	S2	S3	S4	S5	S6
83	100	85	88	▲	0	▲	▲	▲	▲

Catawba**Wells (R) Senate District - 42**

2016 Scores %	2015 Scores %	2013-2014 Average %	Lifetime %	S1	S2	S3	S4	S5	S6
0	0	7	3	0	0	0	0	0	0

Chatham**Foushee (D) Senate District - 23**

2016 Scores %	2015 Scores %	2013-2014 Average %	Lifetime %	S1	S2	S3	S4	S5	S6
67	100	100	94	▲	0	▲	▲	0	▲

Cherokee**Davis, J. (R) Senate District - 50**

2016 Scores %	2015 Scores %	2013-2014 Average %	Lifetime %	S1	S2	S3	S4	S5	S6
0	0	0	6	0	0	0	0	0	0

Chowan**Smith-Ingram (D) Senate District - 3**

2016 Scores %	2015 Scores %	2013-2014 Average %	Lifetime %	S1	S2	S3	S4	S5	S6
67	78	NA	73	▲	0	▲	▲	0	▲

Clay**Davis, J. (R) Senate District - 50**

2016 Scores %	2015 Scores %	2013-2014 Average %	Lifetime %	S1	S2	S3	S4	S5	S6
0	0	0	6	0	0	0	0	0	0

Cleveland**Daniel (R) Senate District - 46**

2016 Scores %	2015 Scores %	2013-2014 Average %	Lifetime %	S1	S2	S3	S4	S5	S6
0	0	5	5	0	E	E	E	0	0

Columbus**Smith (D) Senate District - 13**

2016 Scores %	2015 Scores %	2013-2014 Average %	Lifetime %	S1	S2	S3	S4	S5	S6
67	80	NA	75	▲	0	▲	▲	0	▲

Craven**Sanderson (R) Senate District - 2**

2016 Scores %	2015 Scores %	2013-2014 Average %	Lifetime %	S1	S2	S3	S4	S5	S6
0	0	0	3	0	0	0	0	0	0

Cumberland

Clark (D) Senate District - 21

2016 Scores %	2015 Scores %	2013-2014 Average %	Lifetime %	S1	S2	S3	S4	S5	S6
50	60	53	54	▲	0	0	▲	0	▲

Meredith (R) Senate District - 19

2016 Scores %	2015 Scores %	2013-2014 Average %	Lifetime %	S1	S2	S3	S4	S5	S6
0	38	7	17	0	0	0	0	0	0

Currituck

Cook (R) Senate District - 1

2016 Scores %	2015 Scores %	2013-2014 Average %	Lifetime %	S1	S2	S3	S4	S5	S6
0	0	5	5	0	0	0	0	0	0

Dare

Cook (R) Senate District - 1

2016 Scores %	2015 Scores %	2013-2014 Average %	Lifetime %	S1	S2	S3	S4	S5	S6
0	0	5	5	0	0	0	0	0	0

Davidson

Bingham (R) Senate District - 33

2016 Scores %	2015 Scores %	2013-2014 Average %	Lifetime %	S1	S2	S3	S4	S5	S6
0	0	0	44	0	E	E	E	0	0

Davie

Brock (R) Senate District - 34

2016 Scores %	2015 Scores %	2013-2014 Average %	Lifetime %	S1	S2	S3	S4	S5	S6
0	0	0	25	0	0	0	0	0	0

Duplin

Jackson, B. (R) Senate District - 10

2016 Scores %	2015 Scores %	2013-2014 Average %	Lifetime %	S1	S2	S3	S4	S5	S6
0	0	0	5	0	0	0	0	0	0

Durham

McKissick (D) Senate District - 20

2016 Scores %	2015 Scores %	2013-2014 Average %	Lifetime %	S1	S2	S3	S4	S5	S6
83	100	82	78	▲	▲	▲	▲	0	▲

Woodard (D) Senate District - 22

2016 Scores %	2015 Scores %	2013-2014 Average %	Lifetime %	S1	S2	S3	S4	S5	S6
83	100	85	88	▲	0	▲	▲	▲	▲

Edgecombe

Smith-Ingram (D) Senate District - 3

2016 Scores %	2015 Scores %	2013-2014 Average %	Lifetime %	S1	S2	S3	S4	S5	S6
67	78	NA	73	▲	0	▲	▲	0	▲

Forsyth

Krawiec (R) Senate District - 31

2016 Scores %	2015 Scores %	2013-2014 Average %	Lifetime %	S1	S2	S3	S4	S5	S6
0	0	0	0	0	0	0	0	0	0

Lowe (D) Senate District - 32

2016 Scores %	2015 Scores %	2013-2014 Average %	Lifetime %	S1	S2	S3	S4	S5	S6
33	100	NA	73	0	NV	0	▲	0	▲

Franklin

Barefoot (R) Senate District - 18

2016 Scores %	2015 Scores %	2013-2014 Average %	Lifetime %	S1	S2	S3	S4	S5	S6
0	10	5	5	0	0	0	0	0	0

Gaston

Curtis (R) Senate District - 44

2016 Scores %	2015 Scores %	2013-2014 Average %	Lifetime %	S1	S2	S3	S4	S5	S6
0	0	0	0	0	0	0	0	0	0

Harrington (R) Senate District - 43

2016 Scores %	2015 Scores %	2013-2014 Average %	Lifetime %	S1	S2	S3	S4	S5	S6
0	0	0	3	0	0	0	0	0	0

Gates**Cook (R) Senate District - 1**

2016 Scores %	2015 Scores %	2013-2014 Average %	Lifetime %	S1	S2	S3	S4	S5	S6
0	0	5	5	0	0	0	0	0	0

Graham**Davis, J. (R) Senate District - 50**

2016 Scores %	2015 Scores %	2013-2014 Average %	Lifetime %	S1	S2	S3	S4	S5	S6
0	0	0	6	0	0	0	0	0	0

Granville**McKissick (D) Senate District - 20**

2016 Scores %	2015 Scores %	2013-2014 Average %	Lifetime %	S1	S2	S3	S4	S5	S6
83	100	82	78	▲	▲	▲	▲	0	▲

Greene**Davis, D. (D) Senate District - 5**

2016 Scores %	2015 Scores %	2013-2014 Average %	Lifetime %	S1	S2	S3	S4	S5	S6
50	100	76	80	▲	0	0	▲	0	▲

Guilford**Berger (R) Senate District - 26**

2016 Scores %	2015 Scores %	2013-2014 Average %	Lifetime %	S1	S2	S3	S4	S5	S6
0	0	0	29	0	0	0	0	0	0

Robinson (D) Senate District - 28

2016 Scores %	2015 Scores %	2013-2014 Average %	Lifetime %	S1	S2	S3	S4	S5	S6
83	100	82	74	▲	0	▲	▲	▲	▲

Wade (R) Senate District - 27

2016 Scores %	2015 Scores %	2013-2014 Average %	Lifetime %	S1	S2	S3	S4	S5	S6
0	0	0	0	0	0	0	0	0	0

Halifax**Bryant (D) Senate District - 4**

2016 Scores %	2015 Scores %	2013-2014 Average %	Lifetime %	S1	S2	S3	S4	S5	S6
60	90	88	88	▲	0	▲	▲	0	E

Harnett**Rabin (R) Senate District - 12**

2016 Scores %	2015 Scores %	2013-2014 Average %	Lifetime %	S1	S2	S3	S4	S5	S6
0	0	5	3	E	0	0	0	0	0

Haywood**Davis, J. (R) Senate District - 50**

2016 Scores %	2015 Scores %	2013-2014 Average %	Lifetime %	S1	S2	S3	S4	S5	S6
0	0	0	6	0	0	0	0	0	0

Henderson**Apodaca (R) Senate District - 48**

2016 Scores %	2015 Scores %	2013-2014 Average %	Lifetime %	S1	S2	S3	S4	S5	S6
0	0	0	31	0	0	0	0	0	0

Hertford**Smith-Ingram (D) Senate District - 3**

2016 Scores %	2015 Scores %	2013-2014 Average %	Lifetime %	S1	S2	S3	S4	S5	S6
67	78	NA	73	▲	0	▲	▲	0	▲

Hoke**Clark (D) Senate District - 21**

2016 Scores %	2015 Scores %	2013-2014 Average %	Lifetime %	S1	S2	S3	S4	S5	S6
50	60	53	54	▲	0	0	▲	0	▲

Hyde

Cook (R) Senate District - 1

2016 Scores %	2015 Scores %	2013-2014 Average %	Lifetime %	S1	S2	S3	S4	S5	S6
0	0	5	5	0	0	0	0	0	0

Iredell

Brock (R) Senate District - 34

2016 Scores %	2015 Scores %	2013-2014 Average %	Lifetime %	S1	S2	S3	S4	S5	S6
0	0	0	25	0	0	0	0	0	0

Curtis (R) Senate District - 44

2016 Scores %	2015 Scores %	2013-2014 Average %	Lifetime %	S1	S2	S3	S4	S5	S6
0	0	0	0	0	0	0	0	0	0

Jackson

Davis, J. (R) Senate District - 50

2016 Scores %	2015 Scores %	2013-2014 Average %	Lifetime %	S1	S2	S3	S4	S5	S6
0	0	0	6	0	0	0	0	0	0

Johnston

Jackson, B. (R) Senate District - 10

2016 Scores %	2015 Scores %	2013-2014 Average %	Lifetime %	S1	S2	S3	S4	S5	S6
0	0	0	5	0	0	0	0	0	0

Newton (R) Senate District - 11

2016 Scores %	2015 Scores %	2013-2014 Average %	Lifetime %	S1	S2	S3	S4	S5	S6
0	0	5	4	0	0	0	E	E	0

Rabin (R) Senate District - 12

2016 Scores %	2015 Scores %	2013-2014 Average %	Lifetime %	S1	S2	S3	S4	S5	S6
0	0	5	3	E	0	0	0	0	0

Jones

Brown (R) Senate District - 6

2016 Scores %	2015 Scores %	2013-2014 Average %	Lifetime %	S1	S2	S3	S4	S5	S6
0	0	0	22	0	0	0	0	0	0

Lee

Rabin (R) Senate District - 12

2016 Scores %	2015 Scores %	2013-2014 Average %	Lifetime %	S1	S2	S3	S4	S5	S6
0	0	5	3	E	0	0	0	0	0

Lenoir

Davis, D. (D) Senate District - 5

2016 Scores %	2015 Scores %	2013-2014 Average %	Lifetime %	S1	S2	S3	S4	S5	S6
50	100	76	80	▲	0	0	▲	0	▲

Pate (R) Senate District - 7

2016 Scores %	2015 Scores %	2013-2014 Average %	Lifetime %	S1	S2	S3	S4	S5	S6
0	0	0	27	0	0	0	0	0	0

Lincoln

Curtis (R) Senate District - 44

2016 Scores %	2015 Scores %	2013-2014 Average %	Lifetime %	S1	S2	S3	S4	S5	S6
0	0	0	0	0	0	0	0	0	0

Macon

Davis, J. (R) Senate District - 50

2016 Scores %	2015 Scores %	2013-2014 Average %	Lifetime %	S1	S2	S3	S4	S5	S6
0	0	0	6	0	0	0	0	0	0

Madison

Hise (R) Senate District - 47

2016 Scores %	2015 Scores %	2013-2014 Average %	Lifetime %	S1	S2	S3	S4	S5	S6
0	0	5	3	0	0	0	0	0	0

Martin**Smith-Ingram (D) Senate District - 3**

2016 Scores %	2015 Scores %	2013-2014 Average %	Lifetime %	S1	S2	S3	S4	S5	S6
67	78	NA	73	▲	0	▲	▲	0	▲

McDowell**Hise (R) Senate District - 47**

2016 Scores %	2015 Scores %	2013-2014 Average %	Lifetime %	S1	S2	S3	S4	S5	S6
0	0	5	3	0	0	0	0	0	0

Mecklenburg**Ford (D) Senate District - 38**

2016 Scores %	2015 Scores %	2013-2014 Average %	Lifetime %	S1	S2	S3	S4	S5	S6
60	70	58	62	▲	0	▲	E	0	▲

Jackson, J. (D) Senate District - 37

2016 Scores %	2015 Scores %	2013-2014 Average %	Lifetime %	S1	S2	S3	S4	S5	S6
80	100	80	88	▲	0	▲	▲	E	▲

Rucho (R) Senate District - 39

2016 Scores %	2015 Scores %	2013-2014 Average %	Lifetime %	S1	S2	S3	S4	S5	S6
0	0	0	25	0	0	E	0	0	0

Tarte (R) Senate District - 41

2016 Scores %	2015 Scores %	2013-2014 Average %	Lifetime %	S1	S2	S3	S4	S5	S6
0	0	0	0	E	0	0	E	0	0

Waddell (D) Senate District - 40

2016 Scores %	2015 Scores %	2013-2014 Average %	Lifetime %	S1	S2	S3	S4	S5	S6
67	90	NA	81	▲	0	▲	▲	0	▲

Mitchell**Hise (R) Senate District - 47**

2016 Scores %	2015 Scores %	2013-2014 Average %	Lifetime %	S1	S2	S3	S4	S5	S6
0	0	5	3	0	0	0	0	0	0

Montgomery**Bingham (R) Senate District - 33**

2016 Scores %	2015 Scores %	2013-2014 Average %	Lifetime %	S1	S2	S3	S4	S5	S6
0	0	0	44	0	E	E	E	0	0

Moore**Tillman (R) Senate District - 29**

2016 Scores %	2015 Scores %	2013-2014 Average %	Lifetime %	S1	S2	S3	S4	S5	S6
0	0	0	30	0	0	0	0	0	0

Nash**Bryant (D) Senate District - 4**

2016 Scores %	2015 Scores %	2013-2014 Average %	Lifetime %	S1	S2	S3	S4	S5	S6
60	90	88	88	▲	0	▲	▲	0	E

Newton (R) Senate District - 11

2016 Scores %	2015 Scores %	2013-2014 Average %	Lifetime %	S1	S2	S3	S4	S5	S6
0	0	5	4	0	0	0	E	E	0

New Hanover**Lee (R) Senate District - 9**

2016 Scores %	2015 Scores %	2013-2014 Average %	Lifetime %	S1	S2	S3	S4	S5	S6
0	INC	NA	0	0	0	0	0	0	0

Rabon (R) Senate District - 8

2016 Scores %	2015 Scores %	2013-2014 Average %	Lifetime %	S1	S2	S3	S4	S5	S6
0	0	0	2	0	0	0	0	0	0

Northampton**Smith-Ingram (D) Senate District - 3**

2016 Scores %	2015 Scores %	2013-2014 Average %	Lifetime %	S1	S2	S3	S4	S5	S6
67	78	NA	73	▲	0	▲	▲	0	▲

Onslow

Brown (R) Senate District - 6

2016 Scores %	2015 Scores %	2013-2014 Average %	Lifetime %	S1	S2	S3	S4	S5	S6
0	0	0	22	0	0	0	0	0	0

Orange

Foushee (D) Senate District - 23

2016 Scores %	2015 Scores %	2013-2014 Average %	Lifetime %	S1	S2	S3	S4	S5	S6
67	100	100	94	▲	0	▲	▲	0	▲

Pamlico

Sanderson (R) Senate District - 2

2016 Scores %	2015 Scores %	2013-2014 Average %	Lifetime %	S1	S2	S3	S4	S5	S6
0	0	0	3	0	0	0	0	0	0

Pasquotank

Cook (R) Senate District - 1

2016 Scores %	2015 Scores %	2013-2014 Average %	Lifetime %	S1	S2	S3	S4	S5	S6
0	0	5	5	0	0	0	0	0	0

Pender

Rabon (R) Senate District - 8

2016 Scores %	2015 Scores %	2013-2014 Average %	Lifetime %	S1	S2	S3	S4	S5	S6
0	0	0	2	0	0	0	0	0	0

Perquimans

Cook (R) Senate District - 1

2016 Scores %	2015 Scores %	2013-2014 Average %	Lifetime %	S1	S2	S3	S4	S5	S6
0	0	5	5	0	0	0	0	0	0

Person

Woodard (D) Senate District - 22

2016 Scores %	2015 Scores %	2013-2014 Average %	Lifetime %	S1	S2	S3	S4	S5	S6
83	100	85	88	▲	0	▲	▲	▲	▲

Pitt

Davis, D. (D) Senate District - 5

2016 Scores %	2015 Scores %	2013-2014 Average %	Lifetime %	S1	S2	S3	S4	S5	S6
50	100	76	80	▲	0	0	▲	0	▲

Pate (R) Senate District - 7

2016 Scores %	2015 Scores %	2013-2014 Average %	Lifetime %	S1	S2	S3	S4	S5	S6
0	0	0	27	0	0	0	0	0	0

Polk

Hise (R) Senate District - 47

2016 Scores %	2015 Scores %	2013-2014 Average %	Lifetime %	S1	S2	S3	S4	S5	S6
0	0	5	3	0	0	0	0	0	0

Randolph

Gunn (R) Senate District - 24

2016 Scores %	2015 Scores %	2013-2014 Average %	Lifetime %	S1	S2	S3	S4	S5	S6
0	0	0	2	0	0	0	0	0	0

Tillman (R) Senate District - 29

2016 Scores %	2015 Scores %	2013-2014 Average %	Lifetime %	S1	S2	S3	S4	S5	S6
0	0	0	30	0	0	0	0	0	0

Richmond

McInnis (R) Senate District - 25

2016 Scores %	2015 Scores %	2013-2014 Average %	Lifetime %	S1	S2	S3	S4	S5	S6
0	0	NA	0	0	0	0	0	0	0

Robeson**Smith (D) Senate District - 13**

2016 Scores %	2015 Scores %	2013-2014 Average %	Lifetime %	S1	S2	S3	S4	S5	S6
67	80	NA	75	▲	0	▲	▲	0	▲

Rockingham**Berger (R) Senate District - 26**

2016 Scores %	2015 Scores %	2013-2014 Average %	Lifetime %	S1	S2	S3	S4	S5	S6
0	0	0	29	0	0	0	0	0	0

Rowan**Brock (R) Senate District - 34**

2016 Scores %	2015 Scores %	2013-2014 Average %	Lifetime %	S1	S2	S3	S4	S5	S6
0	0	0	25	0	0	0	0	0	0

McInnis (R) Senate District - 25

2016 Scores %	2015 Scores %	2013-2014 Average %	Lifetime %	S1	S2	S3	S4	S5	S6
0	0	NA	0	0	0	0	0	0	0

Rutherford**Hise (R) Senate District - 47**

2016 Scores %	2015 Scores %	2013-2014 Average %	Lifetime %	S1	S2	S3	S4	S5	S6
0	0	5	3	0	0	0	0	0	0

Sampson**Jackson, B. (R) Senate District - 10**

2016 Scores %	2015 Scores %	2013-2014 Average %	Lifetime %	S1	S2	S3	S4	S5	S6
0	0	0	5	0	0	0	0	0	0

Scotland**McInnis (R) Senate District - 25**

2016 Scores %	2015 Scores %	2013-2014 Average %	Lifetime %	S1	S2	S3	S4	S5	S6
0	0	NA	0	0	0	0	0	0	0

Stanly**McInnis (R) Senate District - 25**

2016 Scores %	2015 Scores %	2013-2014 Average %	Lifetime %	S1	S2	S3	S4	S5	S6
0	0	NA	0	0	0	0	0	0	0

Stokes**Randleman (R) Senate District - 30**

2016 Scores %	2015 Scores %	2013-2014 Average %	Lifetime %	S1	S2	S3	S4	S5	S6
17	0	0	15	0	0	0	0	▲	0

Surry**Randleman (R) Senate District - 30**

2016 Scores %	2015 Scores %	2013-2014 Average %	Lifetime %	S1	S2	S3	S4	S5	S6
17	0	0	15	0	0	0	0	▲	0

Swain**Davis, J. (R) Senate District - 50**

2016 Scores %	2015 Scores %	2013-2014 Average %	Lifetime %	S1	S2	S3	S4	S5	S6
0	0	0	6	0	0	0	0	0	0

Transylvania**Apodaca (R) Senate District - 48**

2016 Scores %	2015 Scores %	2013-2014 Average %	Lifetime %	S1	S2	S3	S4	S5	S6
0	0	0	31	0	0	0	0	0	0

Tyrrell**Smith-Ingram (D) Senate District - 3**

2016 Scores %	2015 Scores %	2013-2014 Average %	Lifetime %	S1	S2	S3	S4	S5	S6
67	78	NA	73	▲	0	▲	▲	0	▲

Union

Hartsell (R) Senate District - 36

2016 Scores %	2015 Scores %	2013-2014 Average %	Lifetime %	S1	S2	S3	S4	S5	S6
20	33	INC	55	E	0	▲	0	0	0

Tucker (R) Senate District - 35

2016 Scores %	2015 Scores %	2013-2014 Average %	Lifetime %	S1	S2	S3	S4	S5	S6
0	0	0	4	0	0	0	E	0	0

Vance

Bryant (D) Senate District - 4

2016 Scores %	2015 Scores %	2013-2014 Average %	Lifetime %	S1	S2	S3	S4	S5	S6
60	90	88	88	▲	0	▲	▲	0	E

Wake

Alexander (R) Senate District - 15

2016 Scores %	2015 Scores %	2013-2014 Average %	Lifetime %	S1	S2	S3	S4	S5	S6
20	20	NA	20	E	0	0	▲	0	0

Barefoot (R) Senate District - 18

2016 Scores %	2015 Scores %	2013-2014 Average %	Lifetime %	S1	S2	S3	S4	S5	S6
0	10	5	5	0	0	0	0	0	0

Barringer (R) Senate District - 17

2016 Scores %	2015 Scores %	2013-2014 Average %	Lifetime %	S1	S2	S3	S4	S5	S6
40	13	16	18	▲	0	0	▲	0	E

Blue (D) Senate District - 14

2016 Scores %	2015 Scores %	2013-2014 Average %	Lifetime %	S1	S2	S3	S4	S5	S6
60	100	89	85	E	0	▲	▲	0	▲

Chaudhuri (D) Senate District - 16

2016 Scores %	2015 Scores %	2013-2014 Average %	Lifetime %	S1	S2	S3	S4	S5	S6
100	NA	NA	100	▲	▲	▲	▲	▲	▲

Warren

Bryant (D) Senate District - 4

2016 Scores %	2015 Scores %	2013-2014 Average %	Lifetime %	S1	S2	S3	S4	S5	S6
60	90	88	88	▲	0	▲	▲	0	E

Washington

Smith-Ingram (D) Senate District - 3

2016 Scores %	2015 Scores %	2013-2014 Average %	Lifetime %	S1	S2	S3	S4	S5	S6
67	78	NA	73	▲	0	▲	▲	0	▲

Watauga

Ballard (R) Senate District - 45

2016 Scores %	2015 Scores %	2013-2014 Average %	Lifetime %	S1	S2	S3	S4	S5	S6
0	NA	NA	0	0	0	0	0	0	0

Wayne

Davis, D. (D) Senate District - 5

2016 Scores %	2015 Scores %	2013-2014 Average %	Lifetime %	S1	S2	S3	S4	S5	S6
50	100	76	80	▲	0	0	▲	0	▲

Pate (R) Senate District - 7

2016 Scores %	2015 Scores %	2013-2014 Average %	Lifetime %	S1	S2	S3	S4	S5	S6
0	0	0	27	0	0	0	0	0	0

Wilkes

Randleman (R) Senate District - 30

2016 Scores %	2015 Scores %	2013-2014 Average %	Lifetime %	S1	S2	S3	S4	S5	S6
17	0	0	15	0	0	0	0	▲	0

Wilson

Bryant (D) Senate District - 4

2016 Scores %	2015 Scores %	2013-2014 Average %	Lifetime %	S1	S2	S3	S4	S5	S6
60	90	88	88	▲	0	▲	▲	0	E

Newton (R) Senate District - 11

2016 Scores %	2015 Scores %	2013-2014 Average %	Lifetime %	S1	S2	S3	S4	S5	S6
0	0	5	4	0	0	0	E	E	0

Yadkin

Krawiec (R) Senate District - 31

2016 Scores %	2015 Scores %	2013-2014 Average %	Lifetime %	S1	S2	S3	S4	S5	S6
0	0	0	0	0	0	0	0	0	0

Yancey

Hise (R) Senate District - 47

2016 Scores %	2015 Scores %	2013-2014 Average %	Lifetime %	S1	S2	S3	S4	S5	S6
0	0	5	3	0	0	0	0	0	0

Allies, Adversaries, and It's Complicated

ALLIES

Those Who Stood Up to Duke Energy

Instead of honoring the more than 8,000 comments citizens submitted addressing how to clean up North Carolina's coal ash mess, the NC Senate - in cahoots with Governor McCrory and Duke Energy - drafted legislation that allows the corporate polluter to further delay or disregard cleanup efforts.

However, 36 legislators voted to reject HB630, better known as the "Duke Energy Protection Act." 36 elected officials recognized that this bill was not the right next step to address coal ash. The Legislature could still help provide clean, safe drinking water to communities impacted by coal ash contamination without giving the decision-authority back to Duke Energy, the very culprit behind the contamination.

We would like to thank the following members who cast a pro-people, not pro-polluter, vote by rejecting HB630: Senators Chaudhuri; Randleman; Robinson; Woodard; and Representatives Adcock; Ager; Baskerville; Bradford; Brockman; Cotham; Dollar; Fisher; Gill; D. Hall; K. Hall; L. Hall; Harrison; Insko; Jackson; Jeter; Jordan; Luebke; Malone; G. Martin; McGrady; Meyer; Michaux; Murphy; Pendleton; Queen; Reives; Salmon; Setzer; Sgro; Tine; and B. Turner.

Representative Pricey Harrison

We cannot take for granted the consistent environmental leadership of Rep. Pricey Harrison. During the 2016 session, she was the most outspoken opponent of HB630. Moreover, Rep. Harrison proposed to provide safe drinking water to families negatively affected by Duke Energy's coal ash ponds to show that Duke Energy could provide clean water to North Carolina citizens without

also receiving special treatment. It would be remiss to praise Rep. Harrison without also mentioning her perfect lifetime score of 100%.

ADVERSARIES

Senator Trudy Wade

Making her third consecutive appearance in this section of the Legislative Scorecard, Senator Wade solidifies her reputation as one of the most anti-environmental members of the General Assembly. As Co-Chair of two Senate environmental committees, Senator Wade is in a prime position to launch attacks on clean water and air. This year Senator Wade:

- Sponsored a bill restricting the state health department's ability to notify residents if their water becomes contaminated with toxins if no federal standard exists, which is quite a long list;
- Supported legislation to eliminate energy efficiency standards, restrict state agencies ability to create public health and safety rules, and terminate the state's successful electronics recycling program; and
- Rushed an "Environmental Amends" bill through the Senate that sought to relax stormwater standards, eliminate critical beach nourishment compatibility assessments, and allow landfills to spray liquefied garbage waste into the air without a permit.

Senator Wade's actions demonstrate her complete disregard for our natural resources and public health. Her aggressive attempts to repeal vital environmental protections leave us baffled and frustrated.



President Pro Tempore Phil Berger

Senator Berger has set the tone for his Chamber, and it is one radically unfriendly to our air, land, and water. Under his leadership, the NC Senate went off the deep end in 2016 with multiple attempts to repeal critical environmental protections.

With his nod of approval, the Senate inserted policy language into its budget designed to undermine scientifically-based clean water solutions. Senators also passed legislation designed to cripple the state’s wind energy industry at the expense of North Carolina’s poorest counties. Berger has condoned such an anti-environmental culture, which allows leadership to run rampant with irresponsible and irrational “regulatory reform” bills. Senator Berger shows zero concern for protecting clean air and water for North Carolina citizens. That is not the leader North Carolina needs or wants.

IT’S COMPLICATED

Former Allies Turned Road Blocks

Starting in 2011, defending environmental values in the NC General Assembly became a starkly partisan issue, despite North Carolinians of all parties (or no party) needing safe water to drink and clean air to breathe. NCLCV’s Legislative Scorecard reflected this shift



photo credit: Waterkeeper Alliance

between the two major parties as Republican scores dropped precipitously and Democrat scores increased. However, we want to highlight that several former pro-conservation champions are now blocking progress on expanding clean, renewable energy.

Additionally, they fail to heed the best interests of their constituents by supporting bills like HB630, the “Duke Energy Protection Act.” It is time for elected officials, especially those who proved their pro-conservation stances over the years, to step back up and re-prioritize our environment beginning in 2017.

Governor McCrory's Progress Report



Overall, Governor McCrory earns an F for the actions taken this year. He put our communities, economy, and public health at risk by failing to protect our environment.

No matter which environmental or public health issue, Governor Pat McCrory prioritizes polluters over people. He openly ignores scientific evidence to address pressing environmental issues and selects political appointees who will follow suit. Governor McCrory spends too much time behind closed doors with his former employer, Duke Energy, leaving him out of touch with the everyday struggles of North Carolina citizens and the impacts of his policies.

Because the governor does not vote on bills, the basis of his grade comes from what he signs into law, public statements, and other executive actions.

SUBJECT	GRADE
Ending a contract with the State Attorney General's office, resulting in fewer legal positions available at DEQ to enforce environmental protections, as a political attack against Attorney General Roy Cooper	F
Vetoing SB71, but later supporting the more harmful HB630, further delaying coal ash cleanup in North Carolina	D
Supporting oil & gas drilling off North Carolina's coast and vocally criticizing President Obama's ban on oil drilling in the Atlantic	F
Allowing state environment and health officials to lift "do not drink" advisories on residents near coal ash ponds, despite evidence that water is contaminated	F
Holding meetings behind closed doors with Duke Energy and DEQ during the heart of coal ash talks and trying to downplay public health risks of a known cancer-causing contaminant found in citizens' wells near coal ash ponds	F
Overall	F

What to do now:

Hold your legislators accountable.

Thank legislators who stood up for sound environmental policies. If they earned a low score or cast an anti-conservation vote, let your elected officials know how this impacts you and your values.

Find who represents you at ncleg.net.

Ask your local, state, and federal candidates where they stand on these issues.

Use this Legislative Scorecard to make informed decisions when choosing which state candidates deserve your support in the upcoming election. Visit LCV.org to see how your members of Congress are voting on federal issues.

Join NCLCV to help reclaim North Carolina's natural identity.

You can help turn environmental values into North Carolina priorities by becoming a member of NCLCV today at nclcv.org. On our website, you can also sign up for our weekly Conservation Insider Bulletin to keep up with political and environmental policy news here in North Carolina and nationally.

WHO WE ARE

Board of Directors

Courtney Crowder, *President*

Mac Montgomery, *Vice-President*

Dan Bruer, *Treasurer*

Maria Kingery, *Immediate Past President*

John Wallace, *Legal Counsel*

Guenevere Abernathy

Lucy Allen

Mary Baggett Martin

Robert S. Hodgman

Valerie Ann Johnson

Jim Overton

Marion S. Sullivan

Al Swanstrom

Nina Szlosberg-Landis

Dr. Amy Tiemann

Staff

Dan Besse, *Conservation Insider Bulletin Editor*

Carrie Clark, *Executive Director*

Dan Crawford, *Director of Governmental Relations*

Laura Marie Davis, *Stanback Intern 2016*

Aisander Duda, *Advancement Director*

Rashad Gibson, *Field and Mobilization Director*

Justine Oller, *Outreach Director*

Cheryl Ross, *Stanback Intern 2016*

Robin Smith, *Enforcement Program Director*

Katie Todd, *Director of Digital Strategies*

Jesse Way, *Stanback Intern 2016*

Nick Younger, *Stanback Intern 2016*



North Carolina League of Conservation Voters

2016 LEGISLATIVE SCORECARD

North Carolina League of Conservation Voters
PO Box 12671 Raleigh, NC 27605

cover photo credit: the Dan River Basin Association (DRBA)

In remembrance: **Everett Bowman**

This year, the environment lost a dedicated advocate. Everett Bowman passed away on June 12, 2016 at his home in Charlotte after a long battle with cancer. Everett was committed to the environment and making the world a better place. As a brilliant lawyer, he once faced the choice of working as legal counsel for an environmental group or accepting a job as a corporate lawyer. He ultimately decided that he could better serve the environment by using his wealth and position as a corporate attorney to fund environmental causes.

In addition to being an award-winning attorney, he was well known for his philanthropy. A generous supporter of land conservation efforts from the Appalachians to the Atlantic, he was recognized in 2015 as the Stanback Volunteer Conservationist of the Year by the NC Land Trust. Everett was also a board member of NCLCV and received the 2014 Catalyst Award for taking exceptional action to create change and bring attention to important environmental issues. He will be missed.



For more information, please visit NCLCV.ORG