



REPORTE ANUAL **2019**



Hispanic/Latino Ministry

The Plan for Hispanic/Latino Ministry

THE UNITED METHODIST CHURCH

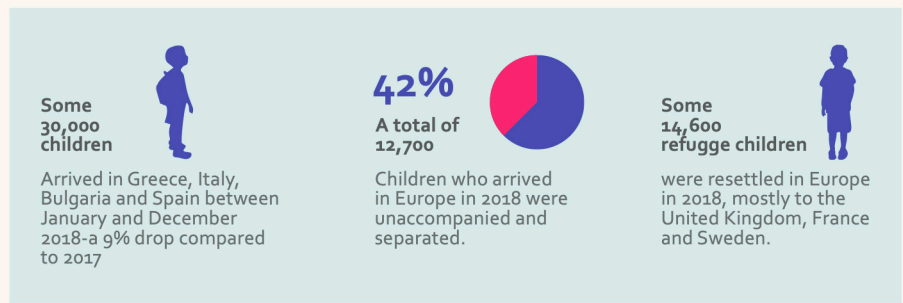
LEADERSHIP DEVELOPMENT



CHILDREN

Across the globe, migrant children and their families suffer from trauma do poverty, violence, family separation, and the frightening journey from their homes to seek refuge in other places. Churches of the California-Pacific Annual Conference along with the "You Are Not Alone" program are becoming places of welcome and healing. This initiative, along with their work with other community organizations, is providing holistic accompaniment for migrant children.

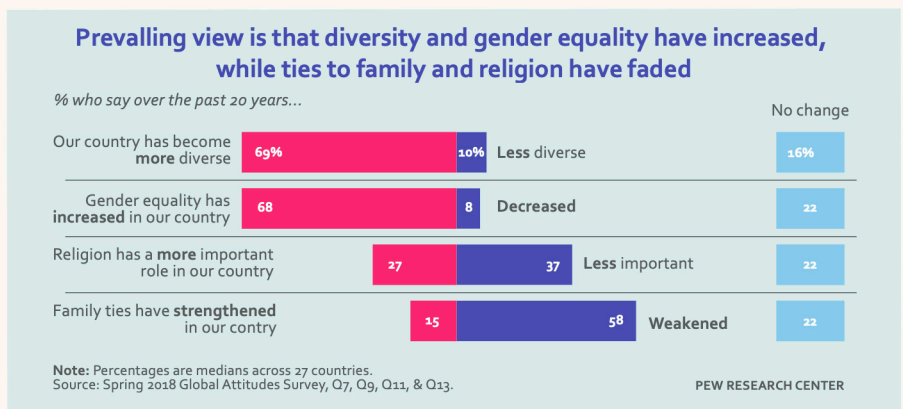
NPHLM is following its strategic call to walk with annual conferences to align the resources available in the connection for the development of a new principled leaders. During 2019 the NPHLM partnered with the Cal-Pac Conference to make possible the strengthening and multiplication of relevant models of ministry like the YANA program.



YOUTH AND YOUNG ADULTS

According to a 2019 Pew Research Report*, across Europe, North America and Australia, diversity has increased. And for the most part, this dynamic of increased ethnic, religious and racial diversity is welcomed with tepid enthusiasm. The Ethnic Plans exists to resource annual conferences to reconcile and rebuild torn relationships during turbulent times while incarnating the ambition of the United Methodist Church of growing ethnic and multicultural ministries who are vital and life-giving.

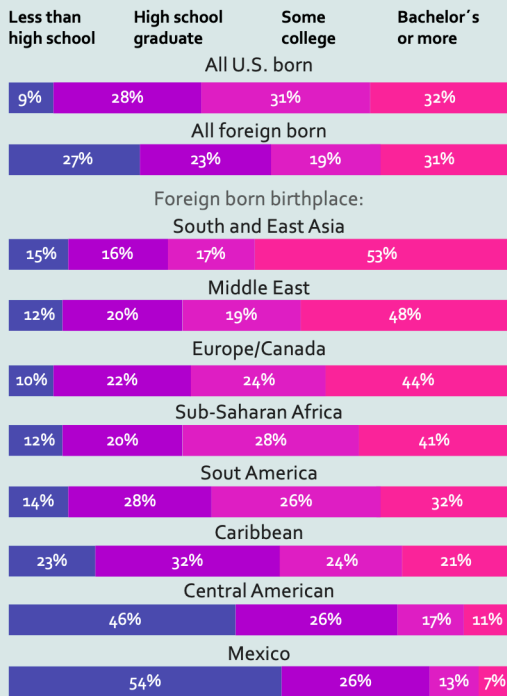
During 2019 the National Plans organized the first Ethnic Young Adult Gathering (EYAG) aimed to respond to the urgent need of the UMC to consolidate a new vision for society. This gathering represented the first step of a collaborative initiative that seeks to honor the uniqueness of each Plan while strengthening the synergy as a collective body of Christ. Because ethnic young adults are underrepresented at all levels in the UMC, it is imperative to reevaluate and redesign the current leadership development paradigm to create spaces for them to contribute with fresh understandings and perspectives on Christian values.



DEVELOPMENT PRIORITIES

Educational attainment among U.S. immigrants, 2017

% among those ages 25 and older



Pew Research Center

FIRST GENERATION OF MIGRANTS

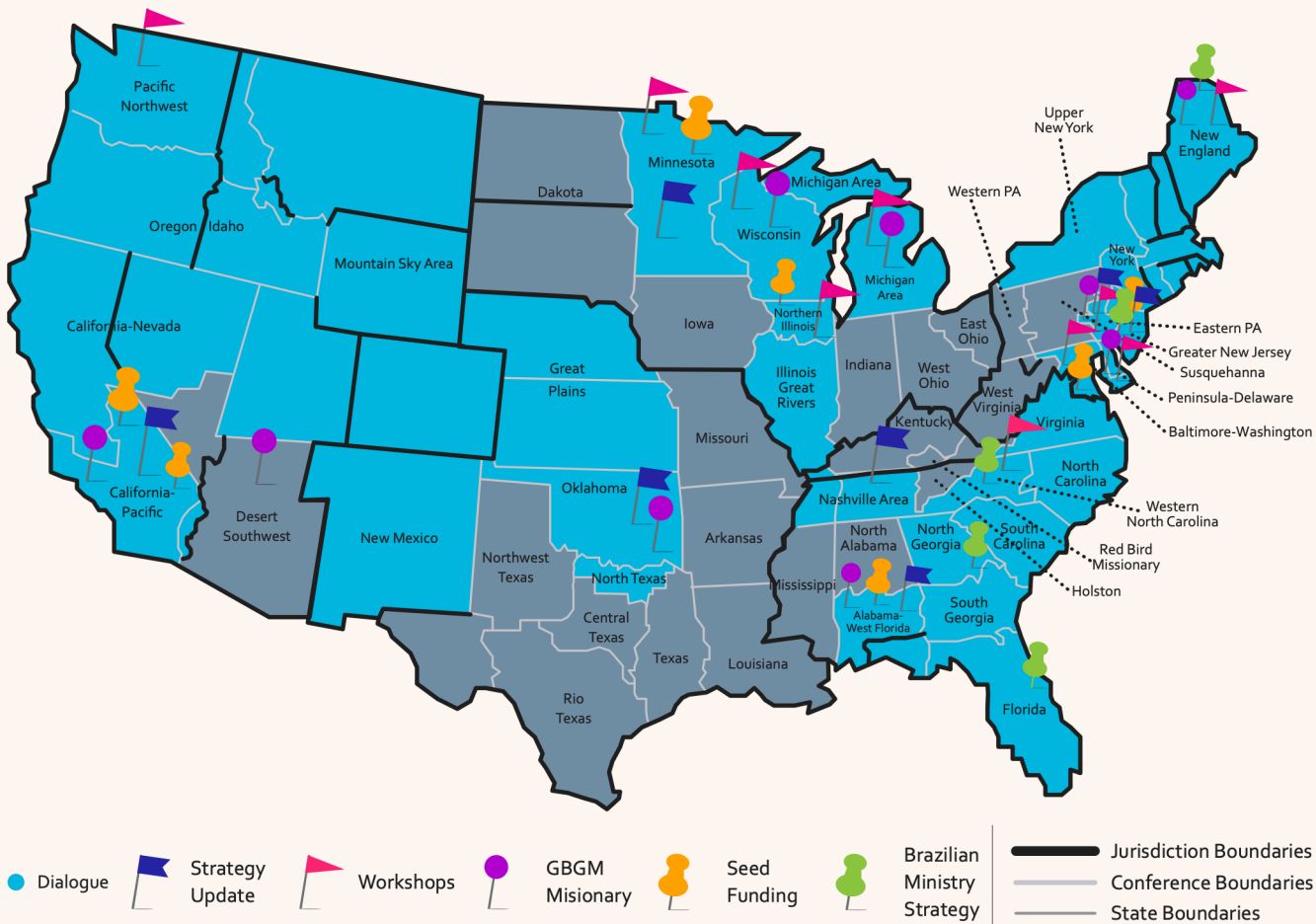
The United States has more immigrants than any other country in the world. Today, more than 40 million people living in the U.S. were born in another country. Mexico is the top origin country of the U.S. immigrant population accounting for 25% of all U.S. immigrants. The next largest origin groups were those from China (6%), India (6%), the Philippines (5%) and El Salvador (3%).

To address the opportunities this community represents, the NPHLM is committed to develop contextual leadership with the understanding of vital ministries while transforming this population from a holistic perspective. During 2019 more than 300 individuals engaged in different processes of leadership development with the intention of creating the space for them to discover their own talents and skills to enhance not only the life of UMC but society as a whole.

"Trainings in Portuguese are very important because they allow our leaders to advance in the mission with the Brazilian community in the United States."

Rev. Juarez Goncalves, Director of Brazilian & Hispanic Ministry
New England Annual Conference

2019 ANNUAL CONFERENCE PARTNERSHIPS



Seed Funding

8

Grant Applications

\$360K
NPHLM Funds

\$420K
Partner Funds



Leadership Development

11

Workshops

260

Participants

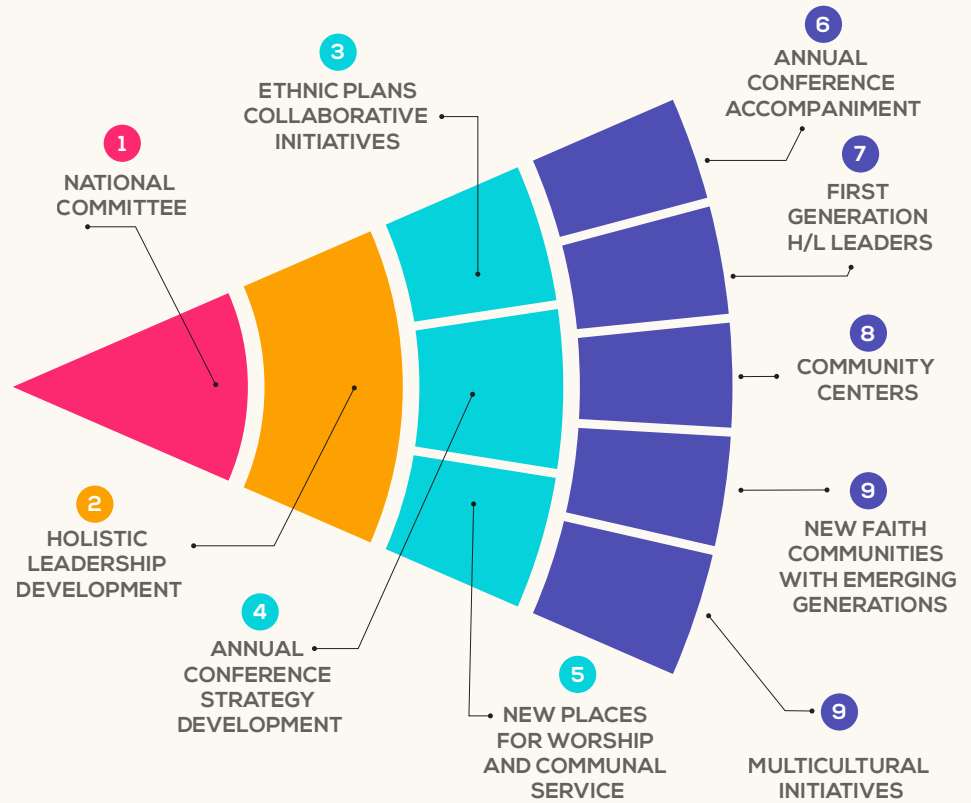
1

Portuguese Licensing School

NPHLM STRUCTURES

Primary Programs: Toward the Future

The relevancy of the church to transform the world depends on vibrant leadership, and to a great extent, the cultivation of laity into faithful disciples which depends on committed and principled clergies who are bold enough to see the Christ in the other. It is by this conviction that the National Committee is confident that the goals and recommendations for the 2020 General Conference proposal of the Hispanic/Latino Ministry Plan will make the United Methodist Church become the source of the vibrant leadership needed to face a world that is consumed with social-political and religious divisions. Our timeless vision may be shaken, but ultimately it will not be defeated.



FINANCIAL REPORT & PROJECTIONS

2017-2020

2021-2024

	2017	2018	2019	Actual 2019	2020	TOTAL		2021-24	2021
Annual Conference Strategies	340	357	357	138	357	1,411	Annual Conference Strategy Development	1,431	358
Grants	300	300	300	125	300	1,200	Annual Conference Accompaniment		
Empowering First Generation	40	57	57	13	57	211	First Generation H/L Leaders		
Church Growth	217	218	210	86	210	855	New Places for Worship and Communal Service	613	153
Ministry Teams for NPW	50	50	40	-	40	180	Community Centers		
Empowering Grants	150	150	150	82	150	600	New Faith Communities with Emerging Generations		
Brazilian	15	15	15	3	15	60			
Accompaniment	2	3	5	1	5	15			
Ministry with the Poor	10	20	20	2	20	70	Ethnic Collaboration	227	57
Global Migration	10	20	20	2	20	70	Multicultural Initiatives		
National Office	350	340	336	179	336	1,362	National Office		
Program Support	103	103	97		97	400			
Program Services	19	19	18		18	74			
Salaries	228	218	221	179	221	888			
Administration Cost	40	40	40	1	40	160	Administration Cost		
TOTAL	957	975	963	406	963	3,858	TOTAL	2,271	568