

Palisadian-Post

WINTER | 2020

90272

magazine

*Holidays
in the Palisades*



Happy Holidays

from

Fran Flanagan Group

FRAN FLANAGAN

LIZ JONES

JILL CALCATERRA

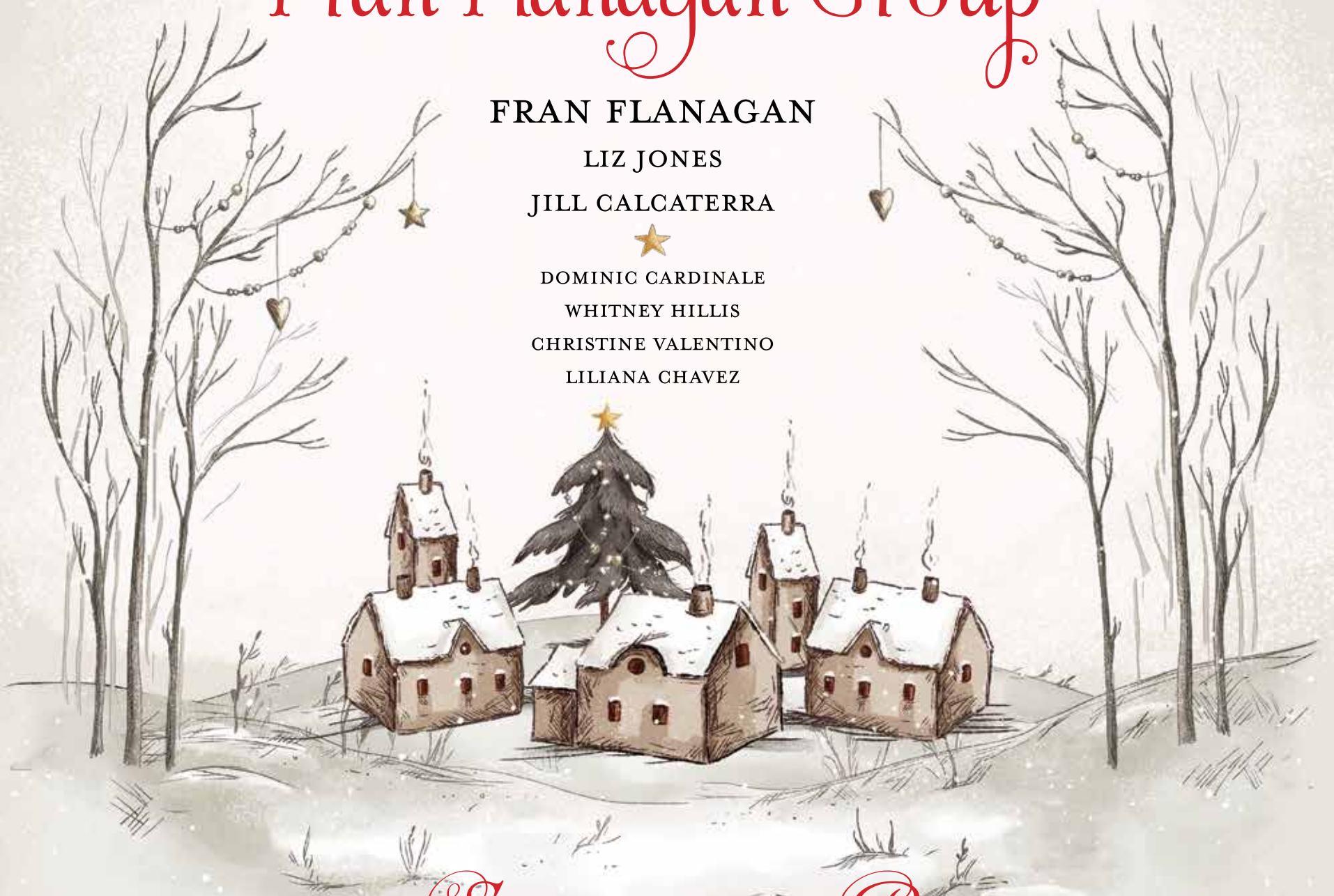


DOMINIC CARDINALE

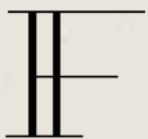
WHITNEY HILLIS

CHRISTINE VALENTINO

LILIANA CHAVEZ



Wishing you *SIMPLY THE BEST* in 2021!



FRAN FLANAGAN
GROUP



Liz Jones
DRE# 02096223
Realtor®
310.780.1473
liz@franflanagan.com



Fran Flanagan
DRE# 00413825
Luxury Estates Director
310.801.9805
fran@franflanagan.com



Jill Calcaterra
DRE# 02083563
Realtor®
310.466.5135
Jill@franflanagan.com

COMPASS

CONTENTS

4 GIVING SEASON
90272 Magazine has compiled a list of local organizations that are accepting donations this holiday season—and all year round.

8 BON APPÉTIT
From family dinners to cocktail hours, let Chef Alain Giraud do the cooking.

10 THE 12 DAYS OF YOGA
Celebrate the holiday season with 12 yoga poses.

12 ZOOMED OUT
Groza Learning Center Director Tatyana Yukhtman offers tips to help students and parents as distance learning continues.

14 HOLIDAY GIFT GUIDE
Shop local in the Palisades.

20 SCHOOL SUPPORT
Roopa Rao Tutoring & Testing supports parents and students in maneuvering through the challenges of the 2020-21 school year.

22 ENJOY THE SHOW
These holiday flicks from over the years feature famous Palisadians.

23 THE BEAUTY OF THE PALISADES
Community members share glimpses into the beauty of our town through photos.



PHOTO BY RICH SCHMITT

**SCHOOL SHOULDN'T
LOOK THE WAY IT DID
WHEN YOU WERE A KID**

www.sycamore-school.org
310 456-1980
mripton@sycamore-school.org

Elementary education for a
connected and evolving world

**SYCA
MORE
SCHOOL
MALIBU**

GIVING SEASON

90272 Magazine has compiled a list of local organizations that are accepting donations this holiday season—and all year round.

PACIFIC PALISADES TASK FORCE ON HOMELESSNESS

What is the mission of Pacific Palisades Task Force on Homelessness?

To provide leadership and resources to address the destructive consequences of homelessness in Pacific Palisades so that the community is protected, remains safe and our homeless people receive compassionate, effective services with access to permanent supportive housing.

Where do donations go?

Funds support the PPTFH program which includes: a full-time professional homeless outreach team, provided by The People Concern, which delivers on-street services with the goal of helping our homeless people move from the street into permanent supportive housing or other shelter; coordination of the outreach team, LAPD and fire personnel to maintain public safety, a community call-in hotline, protect the community from hillside homeless campsite-related fires, maintain restricted entry fire hazard signage and monitoring, and removal and cleaning of all abandoned homeless encampments; and provides bi-monthly community information and discussion forums.

Where can Palisadians donate?

Visit pptfh.org and click on the home page donate button or mail checks to PPTFH at P.O. Box 331, Pacific Palisades, CA 90272.

PACIFIC PALISADES WOMAN'S CLUB

What is the mission of Pacific Palisades Woman's Club?

The Pacific Palisades Woman's Club is a nonprofit organization that brings together energetic and socially minded women in friendship to serve others and our community through philanthropic endeavors.

Where do donations go?

Donations to the PPWC support our annual grants program whereby we provide local nonprofit organizations with funds to conduct local projects to benefit education, arts and recreation, beautification, and community groups.



Pacific Palisades Woman's Club Grant Awards Night

PHOTO BY RICH SCHMITT

Where can Palisadians donate?

Donations may be sent to PPWC at P.O. Box 292, Pacific Palisades, CA 90272.

OPTIMIST CLUB OF PACIFIC PALISADES

What is the mission of the Optimist Club of Pacific Palisades?

The Optimist Club's motto is "Friend of Youth" and their goal is to "Bring Out the Best in Kids." For over 60 years, the Palisades Optimists have provided funding and volunteers to help accomplish this goal.

The Palisades Optimists have established a program and procedure to award grants annually to assist community organizations, schools and groups serving Palisades youth and promoting worthwhile youth activities.

COVID-19 has caused the cancellation of events normally funding the youth programs, meaning the 23 Palisades youth programs supported this year will not be supported next year without new community donations.

Where do donations go?

This year, 23 Palisades youth programs and organizations received financial grants out of the 39 program applications received. Grants are awarded based on various criteria, including the impact on youth in Pacific Palisades, the number of youth impacted by the program, the effectiveness of the program and the likely longevity of the program. These

include specific programs at many of the Palisades schools, Palisades YMCA, youth oratorical and essay contests, and other programs helping Palisades youth.

Donations are used solely for these program grants with no funds used for non-program or administrative costs.

Where can Palisadians donate?

Donations can be sent by check to P.O. Box 211, Pacific Palisades, CA 90272 or through your bank's Zelle fund transfer system using the club's email address: club.info@palioptimist.com.

For further information, see palisadesoptimistclub.com or email club.info@palioptimist.com.

PALISADES P.R.I.D.E.

What is the mission of Palisades PRIDE?

PRIDE's mission is to improve and enhance the visual appeal of the Palisades, particularly in the business community.

Where do donations go?

Donations to PRIDE go to our general fund that is used to erect, enhance and maintain our many beautification projects: planting and maintenance of existing and new street medians, as well as planning, construction/building of other various PRIDE community beautification projects.

Donations can be made by individ-

ual community members and businesses to have a donor bench, brick or trash receptacle placed within the community in their name.

Where can Palisadians donate?

Donations may be sent to Palisades PRIDE at 15332 Antioch St. #13, Pacific Palisades, CA 90272.

THEATRE PALISADES

What is the mission of Theatre Palisades?

Our mission is "to produce and present live theater and live performing arts to the public for cultural and educational purposes."

Where do donations go?

All donations go into a general fund, which we greatly appreciate since we have a substantially reduced income flow given the pandemic closure.

That said, we do have a recently set up special fund, in memory of Sherry Coon. People may stipulate that their donation go to that fund.

Any donor can stipulate where to apply their money, either in writing or through a "Write a Note" function on the donation page where we ask for the card number, etc. They can leave their instruction there.

Where can Palisadians donate?

Donations may be made directly at our website, theatrepalisades.org. Donations may be made with PayPal or with a specific credit or debit card. People may also send checks to Theatre Palisades, P.O. Box 881, Pacific Palisades, CA 90272.

PALISADES ALLIANCE FOR SENIORS

What is the mission of Palisades Alliance for Seniors?

Palisades Alliance is an intergenerational group supporting seniors in Pacific Palisades to stay connected to their community even as they grow older and encounter some limitations.

We aim to provide connection and information, and to develop programs and services. With our work, we hope to increase community and reduce social isolation for seniors here.

Home Is Where the Heart Is

The challenging events of this year have placed in clear focus the importance of always being ready to be of service when called upon. I am and will always be thankful to have been able to positively affect the lives of those who have called on me. I am forever grateful for the family, friends and associates that I have connected with over this past year especially. Wishing you and yours good company as the holidays approach. It is clear now more than ever that home is where the heart is.

Happy Holidays and good health to all in 2021!



THE COMPANY WE KEEP

The company we keep is a reflection of us. Through Sotheby's International Realty's unparalleled global referral network, I can confidently refer my personal clients to other top agents around the world.

Sold via Referral
10210 Strait Lane in Dallas, Texas

Offered at \$19,500,000



FOR SALE | 631 N. Marquette Street
Offered at \$7,495,000 | PrivatePaliCanyon.com



JUST SOLD | 385 N. Grenola Street
Offered at \$2,150,000 | Represented Buyer



JUST SOLD | 830 Haverford Avenue #7
Offered at \$1,775,000 | 830Haverford7.com

Anywhere in the world, or right outside your front door,
I'm at your service.



Locally Raised | Globally Praised

Shamon Shamonki

Senior Global Real Estate Advisor

Shamonki.com | 310.713.4492



Shamon.Shamonki@sothebyshomes.com

Sotheby's

INTERNATIONAL REALTY

© Sotheby's International Realty, Inc. All rights reserved. Sotheby's International Realty® is a registered trademark. This material is based upon information which we consider reliable but because it has been supplied by third parties, we cannot represent that it is accurate or complete and it should not be relied upon as such. This offering is subject to errors, omissions, changes including price or withdrawal without notice. If your property is listed with a real estate broker, please disregard. It is not our intention to solicit the offerings of other real estate brokers. We are happy to work with them and cooperate fully. Operated by Sotheby's International Realty, Inc. Real estate agents affiliated with Sotheby's International Realty, Inc. are independent contractor sales associates and are not employees of Sotheby's International Realty, Inc. Equal Housing Opportunity. Sotheby's International Realty, Inc. DRE#: 899496 | Shamon Shamonki DRE#: 01455034



Theatre Palisades production of "Lend Me A Tenor"

PHOTOS BY RICH SCHMITT

Where do donations go?

Donations will go to programming, including virtual meeting administration as well as, potentially, additional venue rental when social distancing allows us to meet again in person.

Where can Palisadians donate?

Donors can mail checks to P.O. Box 1082, Pacific Palisades, CA 90272.

PALISADES VILLAGE GREEN

What is the mission of Palisades Village Green?

Our mission is "to maintain in the heart of the community an attractive, comfortable space in which people can meet others, have a snack or simply sit in the shade to read or relax." We are unique. We are a privately owned piece of property, run by an all-volunteer Board of Directors, and we receive no city money.

Where do donations go?

All donations to the Village Green go into maintaining our park. This includes a gardener, landscaping, fountain maintenance, tree trimming, rodent control, electrical maintenance, bench refinishing, trash disposal and supplies. We pay an LADWP bill that covers lights and water. We also have property tax, and we do carry a rather large liability policy.

Where can Palisadians donate?

Community members can go to our website (palisadesvillagegreen.org) and donate online or checks can be sent to our P.O. Box 14, Pacific Palisades, CA 90272.

We are a 501(c)(3) organization and donations are tax deductible. We appreciate all donations, no matter the size.



PACIFIC PALISADES LIBRARY ASSOCIATION

What is the mission of Pacific Palisades Library Association?

The mission of the Pacific Palisades Library Association (also known as "The Friends of the Palisades Library") is to enhance the development and operation of the facilities and services of the Palisades Library; to foster good will and understanding between the Palisades community and the library; and to enhance library services throughout the Los Angeles Public Library system.

Where do donations go?

Donations are used primarily to purchase books and other materials for the Palisades Library, as well as funding a variety of regular programming for children, teens and adults, including a speaker series, an annual children's writing contest and Palisades Reads.

In addition, donations are used to help with maintenance and facilities, including landscaping and library equipment, as well as providing support for other library branches.

Where can Palisadians donate?

To join the Palisades Library Association or make a one-time donation, visit friendsofpalilibrary.org.

PACIFIC PALISADES COMMUNITY COUNCIL

What is the mission of Pacific Palisades Community Council?

The mission of PPCC is to protect and improve the quality of life in Pacific Palisades, also known as the "Community." PPCC is a forum for the consideration of Community issues; is an advocate for Pacific Palisades to government

and private agencies upon issues where there is broad Community agreement as reflected by two-thirds of the Board members voting on any one of those issues at a PPCC meeting; and assists other organizations in Pacific Palisades which want help in accomplishing their objectives or projects, which PPCC determines to support.

Where do donations go?

PPCC is a nonprofit 501(c)(3) organization which receives no financial support from any agency and is entirely dependent on voluntary contributions from the Palisades community. Your donations help sustain our operating expenses.

Where can Palisadians donate?

Visit our Donate page on the PPCC website at pacpalicc.org/index.php/ppcc-donation-form.

PALISADES OPTIMIST FOUNDATION

What is the mission of Palisades Optimist Foundation?

The Palisades Optimist Foundation was formed in 1989 to give the community a place to donate money in support of our local schools and receive a tax deduction under the IRS guidelines for a 501(c)(3) entity.

Where do donations go?

Our primary focus is to reward college-bound seniors graduating from Palisades Charter High School with a one-time \$2,000 scholarship paid directly to the school of their choice. Working with the College Center and the generosity of the community, we were able to give six students a helping hand this year.

Our criteria are simple: financial need, academic improvement, good character and the ability to overcome obstacles. We also support a special fund, which is administered by the College Center for students who need help buying college supplies.

In addition, we accept donations for the Optimist Club of Pacific Palisades, if directed by the donor.

Where can Palisadians donate?

Donations, which are accepted any time of the year, can be sent to P.O. Box 242, Pacific Palisades, CA 90272 or via palisadesoptimistfoundation.org. Donors may also reach out directly to ladonhome@yahoo.com.

PALISADES AMERICANISM PARADE ASSOCIATION

What is the mission of Palisades Americanism Parade Association?

The Palisades Americanism Parade

Association hosted its first parade in 1948, and since then, the organization has provided a full day of Fourth of July fun each year in the community. In 2020, PAPA had to pivot plans in response to the ongoing pandemic, with plans to return in 2021.

Where do donations go?

Donations support the community nonprofit organization, PAPA, which produces the parade, concert and fireworks. All community members are volunteers, so donations are used 100% for the expenses associated with the biggest day in the Palisades, July 4th.

Where can Palisadians donate?

For donations, readers can go to palisades4th.com/parade/donate.

CHAMBER MUSIC PALISADES

What is the mission of Chamber Music Palisades?

Chamber Music Palisades is a nonprofit, public benefit corporation (501(c)(3)) whose mission is to promote and support classical music by producing professional chamber music concerts, providing educational opportunities for young people, and creating and furthering awareness of the value and significance of fine music.

Where do donations go?

Donations support: concerts with the finest musicians in town—from the LA Philharmonic, the LA Opera, the LA Chamber Orchestra and studio players—featuring new and old chamber music and well-known and not-so-often played music; live concert commentary by Alan Chapman, KUSC-FM host; scholarships for talented students; free concerts in local schools; commissioning of a new work by a local composer, every season since CMP's beginning 24 years ago; and free admission for full-time students.

Where can Palisadians donate?

Donations can be made at cmpalisades.org by credit card, or by check to Chamber Music Palisades, 1043 Villa Grove Drive, Pacific Palisades, CA 90272. All donations are tax-deductible.

TEMESCAL CANYON ASSOCIATION

What is the mission of Temescal Canyon Association?

The specific and primary purposes of the Temescal Canyon Association shall be: to be an advocate for the preservation of open space in the Santa Monica Mountains; to enhance the public's experience of the open space through building and maintenance of trails, and act as

a liaison between the community and the various park agencies; to lead the public on hikes along these trails; to support and assist the various park agencies in those areas deemed appropriate by the Board.

Where do donations go?

Dues and donations help TCA: fund services and supplies to local State Parks beyond what is included in their annual budget, allow TCA to continue our 32-year-old hiking program, featuring volunteer-led hikes that are free to the public (in hiatus now due to COVID-19), help fund TCA's support for other organizations who are influential in promoting our values—this includes helping provide scholarships to graduates from the LA Conservation Corps so they may pursue higher education.

Where can Palisadians donate?

Online donations are accepted at temcanyon.org/support-tca. For donations by mail, use P.O. Box 1101, Pacific Palisades, CA 90272.

PACIFIC PALISADES HISTORICAL SOCIETY

What is the mission of Pacific Palisades Historical Society?

Founded in 1972, the Pacific Palisades Historical Society has focused on preserving the heritage and culture of our community and the stories of its founding families.

Where do donations go?

Offering free public programs and education, such as last November's program with Randy Young, "The History of TREES in Pacific Palisades and the Politics Behind Them" and last year's luncheon speaker, Charles Hood, naturalist and award-winning author, who fascinated us with his presentation, "Urban Nature Today: Are the backyards of Los Angeles really the new Serengeti?"

Storing, scanning and digitizing of items in our collection so the collection can be transferred to a local site where it will be available worldwide.

Upgrading and maintaining our new website, which will help us improve access to our digital imagery and other local history resources.

Recording oral histories to be preserved and presented at programs where those who have lived the history of our community can tell their stories.

Helping landmark Palisadian treasures like the site of the first U.S. Forestry Station in Rustic Canyon.

Where can Palisadians donate?

For online donations and memberships, visit pacificpalisadeshistory.org/membership-donations. To donate by mail, send to P.O. Box 1299, Pacific Palisades, CA 90272.

GRIEFHAVEN

What is the mission of griefHaven?

griefHaven provides compassionate, educational and effective grief support to those who have lost a loved one.

Where do donations go?

Research shows that for every person who dies, there is an average of four people left behind who are grieving intensely. With over 250,000 COVID-19 deaths in the U.S., we are talking about over one million people who are left with very little grief resources available to them.

Your donations will allow us to be there with them at one of the worst times in their lives. No one should have to take the grief journey without proper support.

Where can Palisadians donate?

Visit griefhaven.org/donate to donate online or mail to 15332 Antioch Street, No. 147, Pacific Palisades, CA 90272. Questions can be directed to 310-459-1789.

CRAYON COLLECTION

What is the mission of Crayon Collection?

Founded by Palisadian Sheila Morovati, the Crayon Collection mission is to "inspire a commitment to environmental consciousness and the infusion of art education in underfunded schools" across the United States and in 10 countries.

Where do donations go?

With the support of the community, Crayon Collection was able to continue "providing access to art for students all over the country as well as much-needed crayons." The organization has "big plans" for 2021, and are seeking support to make that happen.

Where can Palisadians donate?

Community members can donate online at crayoncollection.org/get-involved/donate.

Have a local organization in mind you'd like to see featured in an upcoming edition? Email mypost@palipost.com details.

WWW.PALIPOST.COM

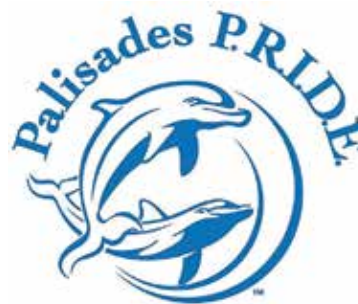


Fourth of July in 2018

PHOTO BY RICH SCHMITT

During a Year that has been Filled
with Trials & Tribulations
Palisades P.R.I.D.E.
Wishes You and Yours A Heartfelt

**Happy Holiday Season,
Joyful New Year,
and a Healthy &
Prosperous 2021**



15332 Antioch Street #13
Pacific Palisades, CA 90272
☎ 310.913-8762

✉ info@palisadespride.com
www.palisadespride.com

Any donation to P.R.I.D.E. is tax deductible



BON APPÉTIT

From family dinner to cocktail hours,
let Chef Alain Giraud do the cooking.

BY STEVE GALLUZZO



Chef Alain Giraud



Heirloom Tomato Salad

There has been no place like home for renowned chef Alain Giraud.

His French bistro, Maison Giraud, opened at 1032 Swarthmore Avenue in 2011. It saddened him, he shared, when he closed the restaurant in July 2016 due to longstanding construction for Palisades Village.

Plans to reopen in the area did not come to fruition, however, the resourceful chef turned this into an opportunity—and business is once again booming, only in a different format.

Giraud is now available for cooking classes and catering, which he calls “private cuisine.”

“I thought Maison Giraud would be my last business,” he admitted. “We were so well received there.”

Giraud began cooking for fun and his family when someone asked: “Why don’t you do take-out?”

“At first, I thought it would be just my neighborhood, but most of my clients are in the Palisades,” he said. “I loved it there. The commute was the only difficult thing. The community was wonderful and the local paper was so supportive of us. I have a whole box of articles.”

Giraud continues to offer his distinct, personalized service: the creation, in the client’s own private surroundings, of an irresistible, customized, multi-course tasting menu reflecting the passion and expertise of an experienced chef.

Those interested can even work with Giraud to customize an ideal menu, designed to personal taste preferences and in concordance with wine selection.

Tasting menus range between “Gourmet” 4 Courses, “Celebration” 5 Courses and “Supreme” 6 Courses. Each menu includes a reception with a selection of hors d’oeuvres.

A sample menu Giraud shared featured a Mushroom Duo (porcini custard and forest mushroom tart, micro organic salad, hazelnut vinaigrette) and Roasted Lamb Filet (Provençal panned, fall vegetable



Menu offerings

PHOTOS COURTESY OF ALAIN GIRAUD

medley, black olive sauce).

In a typical year, Giraud also offers personalized menus for cocktail parties, gourmet buffets and much more. Four Stars Catering can also provide an expert team of hand-picked staff, such as sommelier, waiting staff and Maître d’hôtel.

Giraud’s restaurant, located in the space where Dante Palisades had been, was open seven days per week. It featured a bakery and included plenty of outdoor seating where hungry and thirsty Palisadians could drink their coffee and eat a toasted brioche with homemade preserves or a light lunch salad.

Born in Paris to a family of restaurateurs, Giraud studied at the Culinary Institute in Nîmes for three years in the mid-1970s, then cooked at several restaurants with two-star Michelin ratings in Paris and Southern France.

Upon coming to America in 1988 he intended to stay only a few months, but he started cooking in Los Angeles with Michel Richard at Citrus, and 10 years later, he opened Lavande, then launched Bastide in 2002.

He was awarded Chef of the Year from the California Restaurant Writers Association in 2000 and from *Bon Appetit* magazine in 2003. He also earned a rare four-star rating from the *Los Angeles Times* for Bastide.

In 2008, he and two partners

started Anisette, a brasserie in Santa Monica, which garnered strong reviews before closing in September 2010. His wife, Catherine, ran a table linens retail boutique, Lavender Blue, right next door.

Although he misses the Palisades, Giraud said he is happy to be able to work from his home near LACMA in Miracle Mile.

Menus cost \$38 per person and must be picked up Fridays and Saturdays from 3 to 6 p.m.

“I’m carefully considering all the logistics and practices to prepare everything safely,” Giraud said. “On pick-up days, a table will be set in our front yard to minimize contact and proximity.”

Those picking up are encouraged to text Giraud a few minutes ahead with their name to help facilitate the transaction and keep diners safe.

“When picking up your order, you must wear a mask or face covering the entire time,” Giraud added.

“Most of my ingredients are organic and freshly chosen from the local farmers markets. I wasn’t sure that loyal customers from the Palisades would make the drive to come pick it up, but to my delight, they have.”

For more information, email alain@maison-giraud.com or visit chefalaingiraud.wixsite.com/catering.



We can help your clients with loan amounts up to \$5 million¹

Most banks only offer loans up to \$2 million. Union Bank® offers loans up to \$5 million.

The Union Bank advantage

As a major originator of jumbo loans, we offer higher loan amounts with competitive rates and loan options. And since we're a portfolio lender, your clients can expect exceptional personal service for the life of the loan.

Get personalized advice from our experienced Mortgage Consultant.



Jay Goldberg
Private Mortgage Consultant
NMLS ID #261023
310-600-1988
jay.goldberg@unionbank.com



Loans subject to credit and collateral approval. Not all loan programs are available in all states for all loan amounts. Restrictions may apply. Terms and conditions subject to change.
¹ Minimum credit score and reserve requirements apply and may impact the amount that can be borrowed and the interest rate/APR for which your client is eligible. Consult your Union Bank Mortgage Consultant for details.



©2020 MUFG Union Bank, N.A. All rights reserved. Member FDIC.
Union Bank is a registered trademark and brand name of MUFG Union Bank, N.A. unionbank.com

THE 12 DAYS OF YOGA

Celebrate the holiday season with these 12 yoga poses.

BY TERESA ANNE POWER



1. Pretzel Pose



2. Easy Pose



3. Airplane Pose



4. Cobra Pose



5. Elephant Pose



6. Jack-in-the-Box Pose



7. Otter Pose



8. Ys for Yoga Pose



9. Lion Pose



10. Oyster Pose



11. Volcano Pose



12. Eagle Pose

Kids and adults flourish by doing yoga, and practicing these 12 yoga poses, which are a send-up of the classic song, "The 12 Days of Christmas," is a fun family activity for the holidays.

Start with pretzel pose on the first day, on the second day add easy pose; gradually add all the postures to have a 12-pose yoga routine at the end of 12 days.

Taking the time to practice a few minutes of yoga every day as a family is a great way to not only bond with children, but also to calm your mind and body and create balance in your lives.

- On the first day of Christmas my true love gave to me, the pretzel pose to twist and feel free.
- On the second day of Christmas my true love gave to me, 2 easy poses, and the pretzel pose to twist and feel free.
- On the third day of Christmas, my true love gave to me, 3 airplane poses, 2 easy poses, and the pretzel pose to twist and feel free.
- On the fourth day of Christmas, my

true love gave to me, 4 cobra poses, 3 airplane poses, 2 easy poses, and the pretzel pose to twist and feel free.

- On the fifth day of Christmas my true love gave to me, 5 elephant poses, 4 cobra poses, 3 airplane poses, 2 easy poses, and the pretzel pose to twist and feel free.
- On the sixth day of Christmas my true love gave to me, 6 jack-in-the-box poses, 5 elephant poses, 4 cobra poses, 3 airplane poses, 2 easy poses, and the pretzel pose to twist and feel free.

- On the seventh day of Christmas my true love gave to me, 7 otter poses, 6 jack-in-the-box poses, 5 elephant poses, 4 cobra poses, 3 airplane poses, 2 easy poses, and the pretzel pose to twist and feel free.
- On the eighth day of Christmas my true love gave to me, 8 Ys for yoga, 7 otter poses, 6 jack-in-the-box poses, 5 elephant poses, 4 cobra poses, 3 airplane poses, 2 easy poses, and the pretzel pose to twist and feel free.
- On the ninth day of Christmas my true love gave to me, 9 lion poses, 8 Ys for yoga, 7 otter poses, 6 jack-in-the-box poses, 5 elephant poses, 4 cobra poses, 3 airplane poses, 2 easy poses, and the pretzel pose to twist and feel free.
- On the tenth day of Christmas my true love gave to me, 10 oyster

poses, 9 lion poses, 8 Ys for yoga, 7 otter poses, 6 jack-in-the-box poses, 5 elephant poses, 4 cobra poses, 3 airplane poses, 2 easy poses, and the pretzel pose to twist and feel free.

- On the eleventh day of Christmas my true love gave to me, 11 volcano poses, 10 oyster poses, 9 lion poses, 8 Ys for yoga, 7 otter poses, 6 jack-in-the-box poses, 5 elephant poses, 4 cobra poses, 3 airplane poses, 2 easy poses, and the pretzel pose to twist and feel free.
- On the twelfth day of Christmas my true love gave to me, 12 eagle poses, 11 volcano poses, 10 oyster poses, 9 lion poses, 8 Ys for yoga, 7 otter poses, 6 jack-in-the-box poses, 5 elephant poses, 4 cobra poses, 3 airplane poses, 2 easy poses, and the pretzel pose to twist and feel free.

PALISADES
VILLAGE

YOUR FAVORITE BRANDS ARE COMING TO YOU FOR THE HOLIDAYS.

Introducing

Store-to-Door

by
Caruso

EXCLUSIVE SAME-DAY SHOPPING & DELIVERY

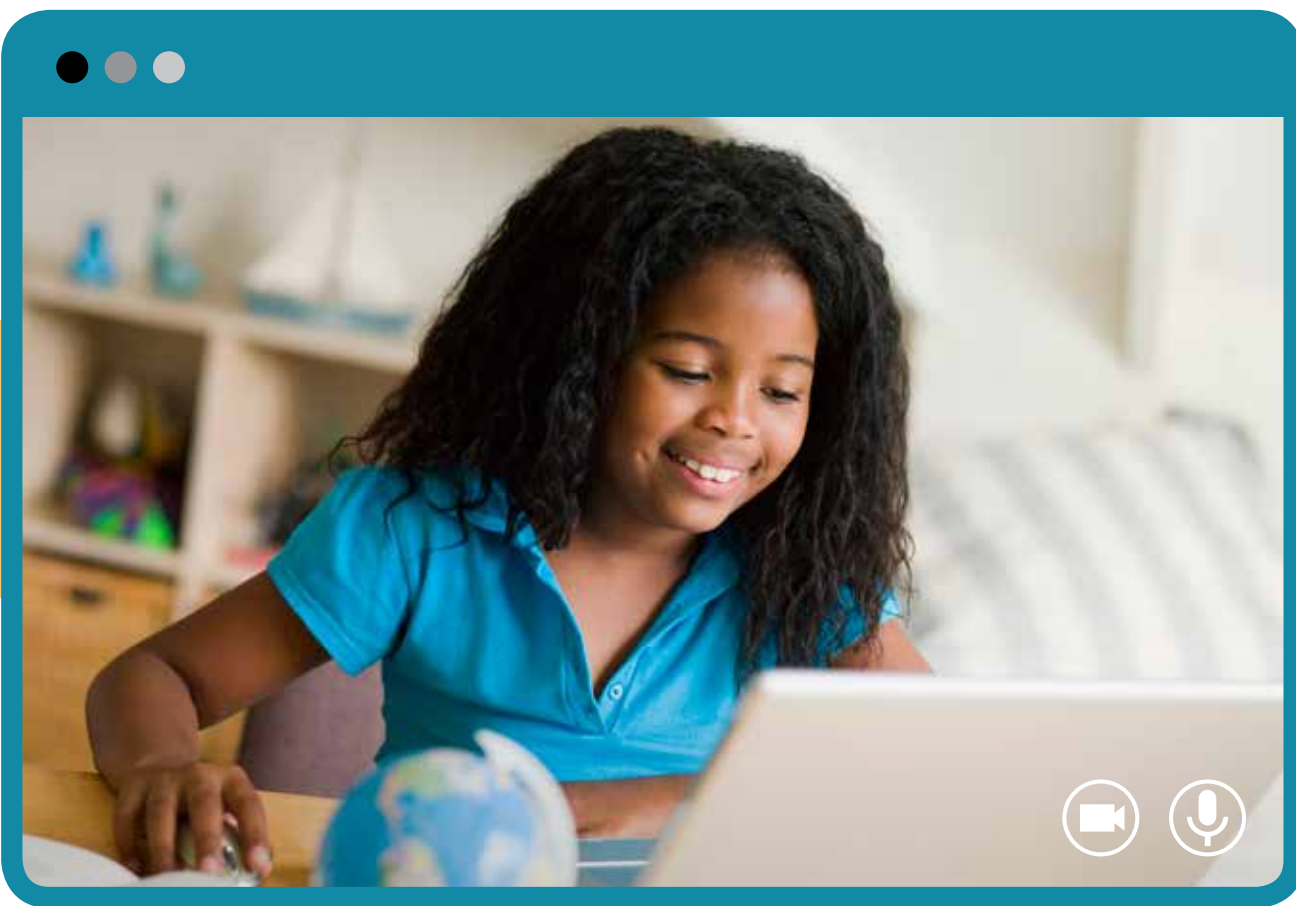
Shop Palisades Village from the comfort of home with online ordering and virtual shopping appointments by **Caruso Concierge**.

Find everything on your list and have it all delivered straight to your doorstep in a safe and contactless way.

SHOP NOW AT [STORETODOOR.PALISADESVILLAGECA.COM](https://storetodoor.palisadesvillageca.com)

Caruso





ZOOMED OUT



Groza Learning Center Director Tatyana Yukhtman offers tips to help students and parents as distance learning continues.

The shift from in-person school to virtual learning is affecting many youths, and Tatyana Yukhtman, the director of Groza Learning Center, sees a disturbing trend: Many children are struggling and parents are unsure how to help.

Recently, Yukhtman worked with a family whose ambitious 15-year-old daughter started to lose interest in going to college after high school. Prior to the pandemic, she was excited to learn, and participated in many school programs and after-school clubs, but her mood started changing after the state began closing schools in the spring.

As she logged onto her computer for Zoom school week after week, she became more tired, started sleeping more during the day, and became more isolated from her friends and family. She lost her motivation. Sound familiar?

Many students are falling behind, Yukhtman explained. Students rely on school for mental health, access to friends, teachers and a routine associated with going to a physical school campus. Although schools had more time to prepare for online learning than in the spring, psychologists who specialize in education research are worried about how students will cope psychologically with the ongoing loss of access to the school environment that is so critical for fostering academic motivation and social development.

As a nation, 2020 has divided many of us politically and socially, Yukhtman continued, yet if there is one thing we can agree on, it is that distant learning has taken a toll on parents and children. Most parents could not have imagined a day that their children would be begging to go back to school. Parents and students are simply “Zoomed Out!”



PHOTOS COURTESY OF GROZA LEARNING CENTER

Distance learning can also provide opportunities for children to develop self-regulatory skills—the ability to manage their time and goals—more rapidly and earlier in life. In online school, students might have several assignments that they need to tackle, so they have to use strategies to accomplish those tasks without oversight and the constant reminder of the white board and a teacher. There is no one to set a structure in place. It is up to students to self-regulate, a skill they will no doubt will use throughout their lifetime.

As a parent, there are several ways to support your child. A great place to start is simply asking your child how they feel, where they are struggling, what is working for them, what is most frustrating and lastly, how can you help them?

For younger children who may have trouble expressing themselves, ask them to illustrate their feelings.

Although many parents try to help their children ac-

ademically, this often leads to frustration, arguments and strained relationships. As parents, we take on many roles; however, being a full-time teacher is not a role most of us are qualified to fill.

Here are some tips to help your child stay organized and on track:

- Create a schedule
- Create a comfortable and organized workspace (distraction-free zone)
- Log onto the parent portal to track your student’s attendance and assignments
- Stay in contact with teachers
- Designate times for snacks, lunch, physical activity and electronics
- Keep an open dialogue
- Encourage kids to take breaks
- Hire a tutor for 1:1 and interactive learning
- Enroll in homeschool
- Consider pod learning

At Groza, we believe that every student can learn, just not on the same day or in the same way. Our team makes sure we listen to your story and your goals, and understand your child’s unique needs. With our award-winning, all-encompassing tutoring, test-prep, homeschool and academic support programs, we serve students from Pre-K to college.

Our educational specialists are available online, in-home and in-center seven days per week.

Groza Learning Center is located at 881 Alma Real Drive in Suite 115. For more information, visit grozalearningcenter.com or call 310-454-3731.

Happy Holidays!

From my family to yours, **THANK YOU**
for your continued support.



Technology for You!®

Solutions from Us!

Dependable,
Quality Service,
In Home or Office

CONSULTING
SALES
INSTALLATION
MAINTENANCE

Ramis Sadrieh, MBA

- Personal Technology Consultant
- Computer Science - UCLA
- Chamber President 2009 - 2010

I CAN MAKE YOUR HOME SMART!

- ☑ I can help you get your house set up with the best WiFi to zoom, stream and download! Need a new computer? I can help with that too!
- ☑ Blanket homes with WiFi and setup ring cameras and doorbells
- ☑ MAC and PC Hardware/Software Installation, Repair and Training
- ☑ Setup Wireless/Wired Networks and Home-Theater Systems
- ☑ Authorized Dealer of Dell Computers and SONY Televisions
- ☑ Configure Smartphones, Tablets & Other Devices

CELEBRATING 17 YEARS!

CALL TODAY!

310.597.5984

www.TechnologyForYou.com

FUSH

THE SMOKE LABEL®
ARTISAN SMOKED TEQUILA

ESCAPE THE ORDINARY

WITH THE EXTRAORDINARY

PALISADES OWNED

Available at Erewhon, Ronny's and Wally's.

5% TO WOLF CONSERVATION

K.C. Soll

Seniors Real Estate Specialist

Do you have **Questions** about...

- Aging-in-Place? (UD) Universal Design Solutions?
- Leasing vs. Selling?
- Prop 60 and Prop 90 Statewide Relocation Options?
- Southern California Assisted Living Options?
- Seniors and Elder Disaster Preparedness?

LET'S WORK TOGETHER

310.245.6161

(also can do Facetime or Zoom)



Email: kc.soll@sir.com

Sotheby's International Realty

Pacific Palisades

DRE#: 419651

KCSollLuxuryHomes.com

Sotheby's
INTERNATIONAL REALTY

2020 HOLIDAY GIFT GUIDE

Shop local in the Palisades



▶ **Bottle Brush Trees**
\$6-\$15
GIFT GARDEN
15266 Antioch St.



▲ **Sweet Laurel Cookbook**
\$28
SWEET LAUREL
15279 Sunset Blvd.



◀ **The Child**
\$99.95
PUZZLE ZOO
15121 Sunset Blvd.



◀ **Wine Bag and Tea Towel**
\$12-\$22
ELIZABETH LAMONT
15221 Sunset Blvd.



▲ **Gourmet Dog Cookies**
\$2.99-\$7.99
COLLAR & LEASH
518 Palisades Drive



▲ **Smoked Tequila**
\$70-\$80
THE SMOKE LABEL
Available at Erewhon,
Ronny's and Wally's
thesmokelabel.com



▲ **Skateboards**
Prices Vary
PALISKATES
1021 Swarthmore Ave.



◀ **Old World Ornaments**
\$16-\$22
VALENTINA
15224 Sunset Blvd.



◀ **Bocce Ball**
\$348
SERENA & LILY
1067 Swarthmore Ave.



YOUR ADVISOR FOR LIFE.®

The team at Avitas Wealth Management wishes a joyous holiday season to all Palisadians!

New Year is a time for new beginnings. If you'd like review your long-term financial plan and get organized in 2021...we can help!

Contact Us
info@avitaswealth.com
424.371.9022

Proud Supporters of the
Palisades Community



For information on our registration status, please contact Avitas Wealth Management, LLC ("Avitas") or refer to the SEC's Investment Adviser Public Disclosure website (www.adviserinfo.sec.gov). Information about Avitas, including fees and services, is available in our written disclosure statement (i.e., Form ADV, Part 2A) which can be obtained upon request by contacting us directly or visiting www.adviserinfo.sec.gov.



Tutoring • Test-Prep • Reading • Homeschool



In-Center
In-Home
Online



310.454.3731
www.GrozaLearningCenter.com

Use coupon code
#PALIPOST to receive
\$240 OFF*

*when purchasing a package of 12

2020 HOLIDAY GIFT GUIDE

Shop local in the Palisades



▲ Garrett Leight Black Sunglasses
\$360
VILLAGE OPTIC
1052 Swarthmore Ave.



▲ Metallic Shearling Gloves
\$191
VERONICA BEARD
1062 Swarthmore Ave.



▲ Leather Rhinestone Collar
\$20-\$40
PAWS & CLAWS
16634 Marquez Ave.



◀ Cell Phone Cross Body
\$42
BOCA
970 Monument St.



◀ Palo Santo with Cinnamon,
Lavender and Rosemary
\$10
BEACH HOUSE BY MIKAILA
beachhousebymikaila.com;
Pacific Palisades Farmers Market



▲ Hanukkah Sweatshirt
\$49
KEETAN
1015 Swarthmore Ave.



◀ P.J. Salvage
Lounge Set
Top \$67;
Bottom \$65
BELLEZZA
867 Via De La Paz



▲ Umbrella
\$65
PORTRAITS OF HOPE
portraitsofhope.org



◀ Palisadian-Post
T-Shirt or Hat
\$20
PALISADIAN-POST
palipost.com



▲ 22k Mixed Sapphire
Drop Earrings
\$5,450
DAVID TISHBI JEWELRY
859 Via De La Paz

Wishing You All the Joy of
A Magical Holiday Season!




Sue Kohl
310.720.3400
www.SueKohl.com
DRE# 00560679



BERKSHIRE HATHAWAY
HomeServices
California Properties



Need a tutor?

1-on-1 tutors for K-5 Grade
Reduce academic stress & improve learning

CALL 818.856.0546

TUTORING & TESTING CENTER

Experienced Tutors K-5 Grade
Open Monday Thru Sunday
Home Work Assistance & Support

WWW.ROOPARAO.COM

CONTACT@ROOPARAO.COM

869 Via Del Paz Unit D
Pacific Palisades, CA 90272

CALL 818.856.0546

Tap into our large network of experienced tutors today!



Professional care in the privacy of your home. Providing quality and exceptional elder care in Pacific Palisades and surrounding cities.



**TO GET STARTED
CALL US TODAY!
310.459.3535**
881 Alma Real Dr., Suite T9
Pacific Palisades, CA 90272

*We Bring
Peace of Mind!*

www.luxehomecare.com

Our Services

Hospice and Home Health Care

- ♥ Skilled Nursing
- ♥ MD In-Home Visits
- ♥ Physical Therapy
- ♥ Occupational Therapy
- ♥ Medication Management
- ♥ Wound Care & Vital Sign Monitoring Counseling
- ♥ Bereavement Counseling

Home Care Services

- ♥ Caregiving Services
- ♥ Companionship
- ♥ Respite Care
- ♥ Bathing & Dressing
- ♥ Personal Hygiene
- ♥ Long-Term Care Insurance Claim Management

Senior Transportation

- ♥ ADA Compliant Wheelchair and Non-Wheelchair Transportation



At Luxe Homecare we are Accredited, Certified, Licensed & Trusted By



2020

HOLIDAY GIFT GUIDE

Shop local in the Palisades



◀ Legend Shirt in Charcoal
\$178
FAHERTY
15261 Palisades Village Lane



▲ Gift of Wellness Bundle
\$250
ALO YOGA
1060 Swarthmore Ave.



▲ Nutcracker Musical Suite Globe
\$78
BLACK INK
869 Swarthmore Ave.



◀ Agraria A+ Prebiotic Hand Sanitizer
\$28
GELSON'S MARKET
15424 Sunset Blvd.



◀ Natasha Clutch AB x HC
\$399
ANINE BING
15231 Palisades Village Lane



▲ Pint of the Month Club
\$144-\$528
MCCONNELL'S FINE ICE CREAMS
15209 Palisades Village Lane

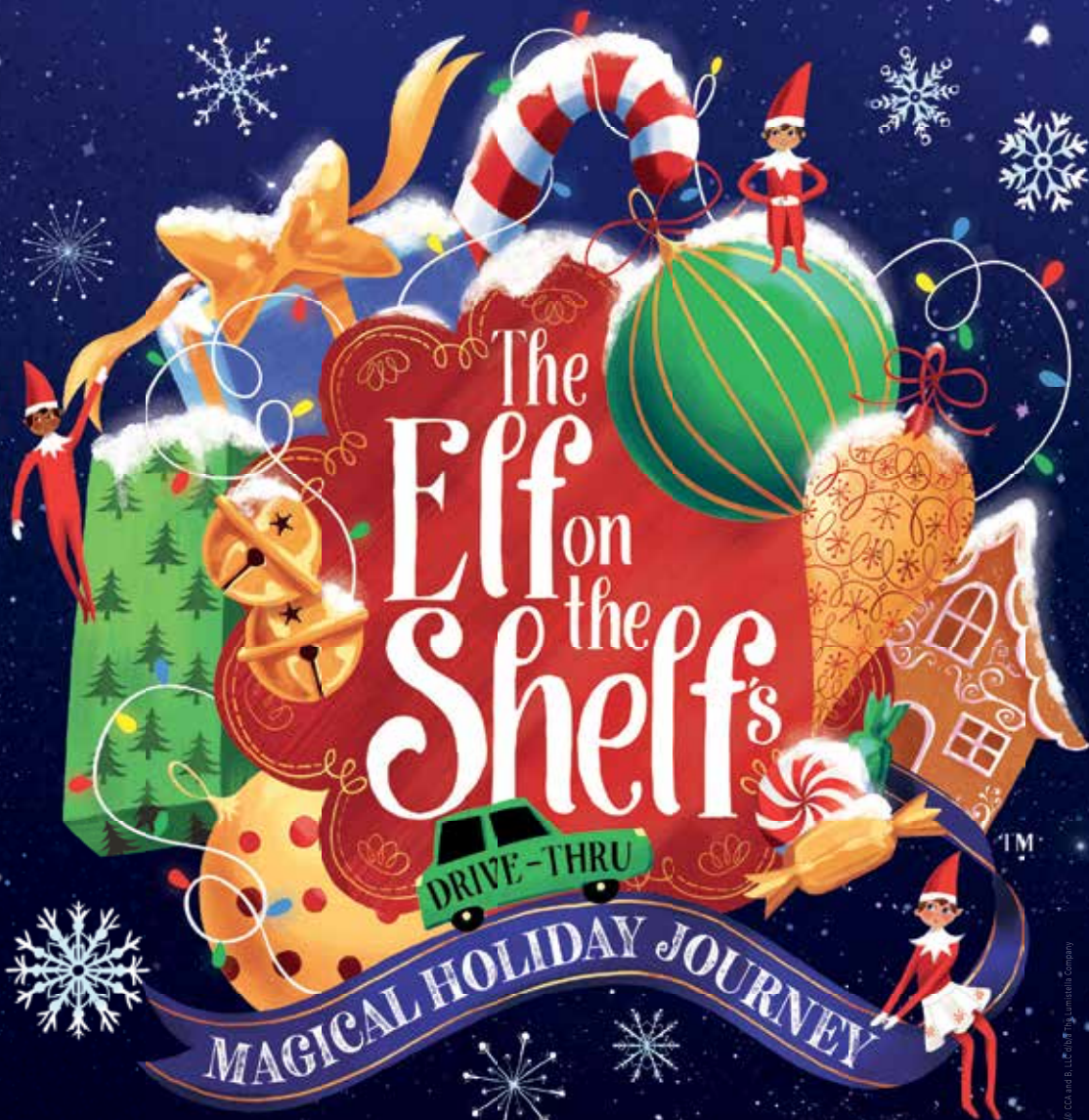


◀ Maryanne Dress
\$278
REFORMATION
15225 Palisades Village Lane



▲ Ajiri Coffee
\$20
THE LITTLE MARKET
1010 Swarthmore Ave.

Presented & Produced By
CONSTELLATION
 IMMERSIVE
 in association with The Lumistella Company



NOW – JANUARY 3
FAIRPLEX

WWW.ELFONTHESHELFJOURNEY.COM



Palisadian-Post
Serving the Community Since 1928

SUBSCRIBE TODAY!

(310) 454-1321

www.PaliPost.com



HAPPY HOLIDAYS

The Finest Quality
Philips French
CLEANERS

**New entrance in the back
 with convenient parking!**

(310) 454-7244

15224 Sunset Blvd. • Pacific Palisades

To expand your child's
 compassion and ambition

start with **1**



At PS1, children grown up in—and help shape—an exceptionally joyful, empathetic, dynamic learning community. From this intentionally created microcosm your child emerges excited and prepared to change the wider world for the better.

www.psone.org
 310-394-1313 x 107
 Inquire & Connect with Us!
 Apply Online Now!

PS1
 PLURALISTIC SCHOOL ONE
 Independent K-6 education in Santa Monica



PHOTOS COURTESY OF ROOPA RAO/
TRISH ALISON PHOTOGRAPHY



SCHOOL SUPPORT

Roopa Rao Tutoring & Testing supports parents and students in maneuvering through the challenges of distance learning.

We are about halfway through the 2020-21 school year, and it has been anything but a typical school year for many students, parents and teachers.

This is usually the time of year where many schools would normally be getting ready for their holiday parties, recitals and gatherings. None of that is going on this December, and everybody is feeling the strain of the many months of distance learning.

At Roopa Rao Tutoring & Testing, we felt there was a real need to support the Pacific Palisades community of parents and students in maneuvering through the challenges of distance learning, giving students the proper tools and support to help them succeed and navigate in the new normal they have been confronted with.

In early October, many local private schools were some of the

first to reopen with waivers. These waivers allowed for many private schools to offer in-person instruction to students in kindergarten through sixth grade, as long as safety precautions were in place.

While this was great news for many elementary students, as they were able to have some in-person lessons and interaction with peers and teachers, it is still not an ideal situation.

Students still don't have full school days or the same academic experience as before the pandemic. As a result, many parents with children in private schools are still turning to us to help supplement their children's learning and gain the extra support they need to get through their studies. So even with some in-person learning, it seems students still need that extra layer of one-on-one support with tutoring services like ours to excel in their classes.

What we can offer students



Roopa Rao

during the pandemic is a solid support system that gives them that personal learning experience that they tend to lack in remote learning. Our tutors are

able to really connect with students, identify their strengths and weaknesses, and work with them to overcome their challenges. All of that is done in a setting where

all COVID-19 precautions are carried out to fullest, in order to protect the children, the parents and our tutors.

This includes regular COVID testing, all spaces cleaned and sanitized after each session, and HEPA filters present where tutoring takes place. Additionally, we offer off-site learning or Zoom tutoring where needed or requested.

We are committed to supporting our Palisades community of parents and children and helping each other get through these challenging times. We extend our tutoring services to the community so that we can guide our students through this unprecedented school year and enable them to continue to excel in their education.

For more information, email contact@rooparao.com or visit rooparao.com.



PFEIFER PROPERTIES

Happy Holidays



Available



1420 BIENVENEDA AVE



820 TOYOPA DR



2611 BEACH AVE



ALEXANDRA PFEIFER
310.650.3540 | PfeiferProperties.com
Alexandra@AlexandraPfeifer.com

Sotheby's
INTERNATIONAL REALTY

Pacific Palisades Brokerage | 15308 Sunset Boulevard, Pacific Palisades, CA 90272 | 310.454.0080

© Sotheby's International Realty, Inc. All rights reserved. Sotheby's International Realty® is a registered trademark. Operated by Sotheby's International Realty, Inc. Real estate agents affiliated with Sotheby's International Realty, Inc. are independent contractor sales associates and are not employees of Sotheby's International Realty, Inc. Equal Housing Opportunity. Pfeifer DRE#: 01743378.

ENJOY THE SHOW

These holiday flicks from over the years feature famous Palisadians.

BY LILY TINOCO

of four Christmas celebrations with their two sets of divorced parents. As Christmas Day progresses, the couple learns more and more about each other—but is that a good thing? You'll have to watch and find out.

The film, which is rated PG-13 for sexual humor and language, has a runtime of 1 hour and 29 minutes.

"Jingle Jangle: A Christmas Journey" (2020)

Netflix brought on the Christmas cheer early this year with its original Christmas musical fantasy film "Jingle Jangle: A Christmas Journey," which was released on the streaming platform November 13.

Palisades Charter High School alumni Forest Whitaker stars in the film as Jeronimus Jangle, a legendary inventor, toymaker and owner of Jangles and Things. Trouble brews after his trusted apprentice Gustafson (Keegan-Michael Key) steals his most-prized creation and his granddaughter Journey (Madalen Mills) tries to retrieve it.

"An imaginary world comes to life in a holiday tale of an eccentric toymaker, his adventurous granddaughter and a magical invention that has the power to change their lives forever," according to Netflix.

The film, which is rated PG, has a runtime of 2 hours and 2 minutes.

"The Christmas Chronicles 2" (2020)

And Netflix keeps them coming—former Palisadians Kurt Russell and Goldie Hawn recently reprised their roles as Santa Claus and Mrs. Claus in Netflix's "The Christmas Chronicles 2," which was released on the streaming platform November 25.

The action-packed, family-friendly sequel from writer-director Chris Columbus follows Kate Pierce (Darby Camp) and her brother Teddy (Judah Lewis) as the two get caught in drama and trouble.

"Unhappy over her mom's new relationship, a now-teenage Kate runs away and lands at the North Pole, where a naughty elf is plotting to cancel Christ-

mas," according to the title description on Netflix.

The naughty elf, known as Belsnickel (Julian Dennison), manages to get ahold of the immortal "Christmas Star" and plots to destroy the North Pole. It becomes the sibling's responsibility to fight back and stop him from wreaking havoc.

The film, which is rated PG for brief language, mild action and violence, has a runtime of 1 hour and 55 minutes.

"Happiest Season" (2020)

"Happiest Season" is a romantic-comedy starring Kristen Stewart and Mackenzie Davis that follows a young woman who struggles to disclose her sexual orientation to her conservative parents during Christmas time.

Honorary Mayor Eugene Levy's son Dan is featured in the film, joining another star-studded cast that includes Alison Brie, Aubrey Plaza and more.

The film was scheduled for a theatrical release on November 20, but was later purchased by the streaming service Hulu. It was released on Hulu on November 25.

The film, which is rated PG-13 for brief language, has a runtime of 1 hour and 42 minutes.



perience the magic of Christmas.

Palisadian Tom Hanks voices six characters in the film, including the iconic train conductor and Santa Claus.

The film was a box office hit, making \$23,323,463 its opening weekend. It appeared at number 4 on Forbes' 2018 "25 Highest-Grossing Christmas Movies of All Time at the U.S. Box Office," right after "Home Alone" and "How the Grinch Stole Christmas."

"The Polar Express," which is rated G, has a runtime of 1 hour and 40 minutes.

"Surviving Christmas" (2004)

"Surviving Christmas," a comedy-romance, stars Palisadian Ben Affleck as Drew Latham, a wealthy executive living a lonely life. Faced with another lonely Christmas, he revisits his childhood home in suburban Chicago in hopes of reliving some memories. Instead, he finds the Valco family living there, and ends up reimbursing them for their company—presenting an unlikely situation that rewards them both.

Affleck is joined by Christina Applegate, Catherine O'Hara and more.

The film—which is rated PG-13 for sexual content, language and brief drug references—has a runtime of 1 hour and 31 minutes.

"Four Christmases" (2008)

Who doesn't enjoy a classic, comedy drama?

Former Palisadian Reese Witherspoon delivers as Kate in "Four Christmases," as she and her partner Brad (Vince Vaughn) are forced to spend a total

Grab your hot chocolate, your cookies and your loved ones—the holidays are here. The *90272 Magazine* has compiled a Palisadian-filled lineup, offering some classics and new films to stream from home.

"8 Crazy Nights" (2002)

"It's naughty, it's nice, it's animated" best describes Palisadian Adam Sandler's "8 Crazy Nights," according to IMDb.

The musical-comedy follows the life of Davey Stone (Sandler), a 33-year-old alcoholic who finds himself in trouble with the law after taking things too far. In the spirit of the holidays, the judge grants him one last chance at redemption. He is sentenced to community service under the supervision of an elderly referee Whitey Duvall, who believes he can help Davey change his ways.


Sandler wrote and produced the film. He also voiced four characters, alongside a star-studded cast comprised of Jackie Sandler, Rob Schneider, fellow Palisadian Tyra Banks and more.

The film, which is rated PG-13 for crude humor and brief drinking/drug references, has a runtime of 1 hour and 26 minutes.

"Polar Express" (2004)

"The Polar Express" is a classic, animated adventure film based on the 1985 children's book of the same name by Chris Van Allsburg.

Santa doesn't exist—or does he? The family-friendly film begs the question as it follows a young boy who boards a train to the North Pole on Christmas Eve with several other children. Together, they ex-



Over \$1 Billion Sold
 Hundreds of Homes Sold to Generations of Palisadians

Since 1979

Happy Holidays

James Respondek
 310.488.4400
 James.Respondek@sothebys.realty
 JamesRespondek.com

Sotheby's
 INTERNATIONAL REALTY

Sotheby's International Realty and the Sotheby's International Realty logo are registered (or unregistered) service marks used with permission. Operated by Sotheby's International Realty, Inc. Real estate agents a firm affiliated with Sotheby's International Realty, Inc. are independent contractor sales associates and are not employees of Sotheby's International Realty, Inc. Equal Housing Opportunity. SIR DRE: 899496. James Respondek DRE: 00713972

THE BEAUTY OF THE PALISADES

Community members share glimpses into the beauty of our town through photos.



PHOTO COURTESY OF SARA JANE BOYERS

GOT MOLD? NOT SURE?

Call LA's leading mold inspection and consulting company.

Don't trust your largest investment or your family's health to untrained, inexperienced & franchised companies!

MoldUSA

The Mold Inspection Specialists!



MoldUSA.com

310-823-MOLD (6653)

Family Owned & Operated
 Since 2001

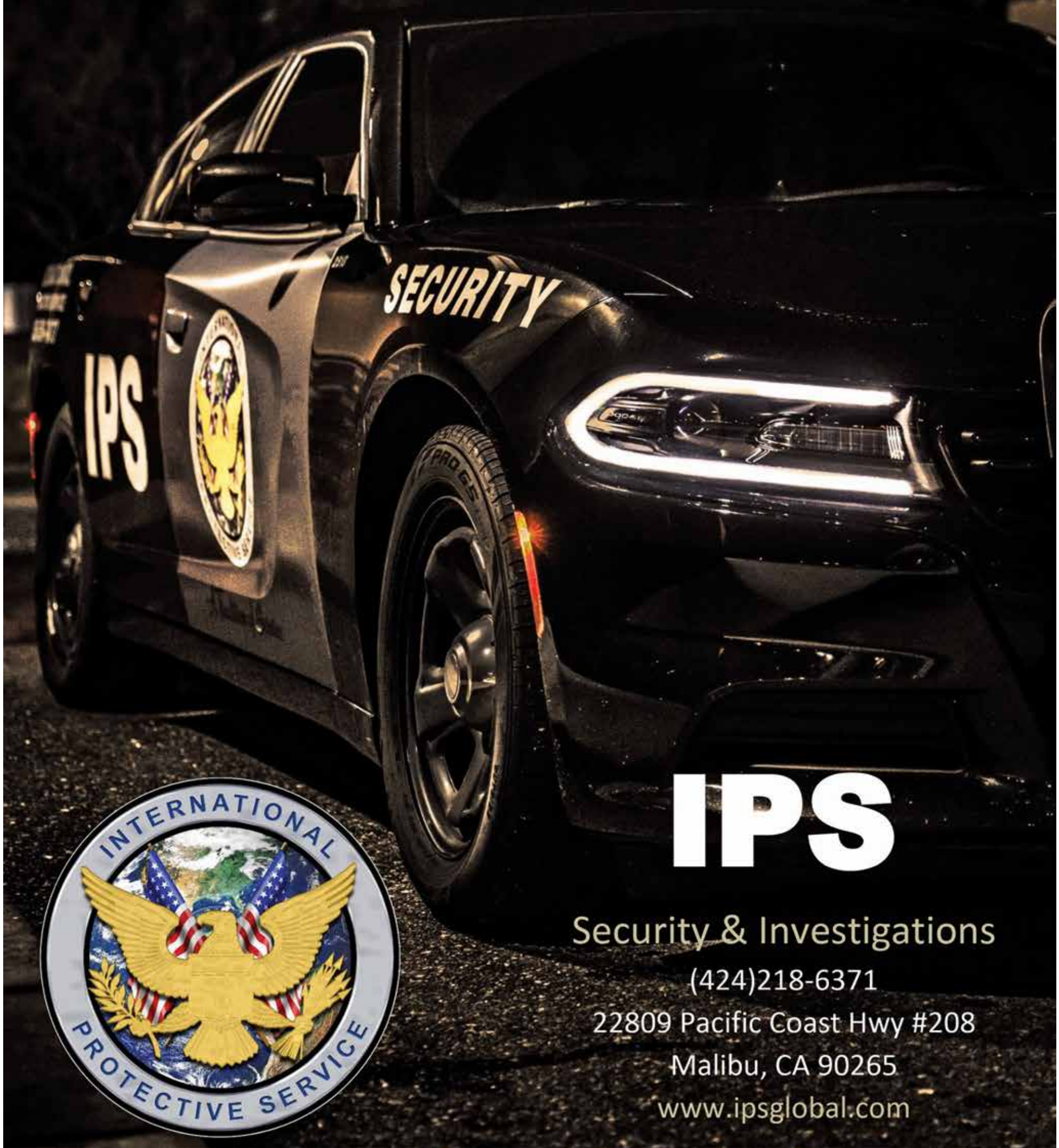


PHOTO COURTESY OF @HEDO.LA



PHOTO COURTESY OF KATHRYN BOUSKILL

“The right company, at the right time.”



IPS

Security & Investigations

(424)218-6371

22809 Pacific Coast Hwy #208

Malibu, CA 90265

www.ipsglobal.com