

Table 1.5
Age-Adjusted SEER Incidence and U.S. Death Rates and 5-Year Relative Survival (Percent)
By Primary Cancer Site, Sex and Time Period

All Races

Site	Incidence ^a (2006-2010)			US Mortality ^b (2006-2010)			Survival ^c (%) (2003-2009)		
	Total	Males	Females	Total	Males	Females	Total	Males	Females
All Sites	463.0	535.9	411.2	176.4	215.3	149.7	65.8	66.4	65.3
Oral Cavity & Pharynx:	10.8	16.2	6.2	2.5	3.8	1.4	62.2	61.4	64.0
Lip	0.7	1.1	0.3	0.0	0.0	0.0	89.6	89.8	88.9
Tongue	3.1	4.7	1.8	0.6	0.9	0.4	62.1	62.6	60.7
Salivary gland	1.3	1.7	1.0	0.2	0.4	0.1	72.1	65.2	81.1
Floor of mouth	0.6	0.8	0.3	0.0	0.0	0.0	50.8	48.1	57.4
Gum & other oral cavity	1.5	1.8	1.3	0.4	0.4	0.3	60.1	58.4	62.0
Nasopharynx	0.6	0.9	0.4	0.2	0.3	0.1	58.9	58.0	61.0
Tonsil	1.8	3.0	0.6	0.2	0.4	0.1	69.9	70.7	66.2
Oropharynx	0.4	0.6	0.2	0.2	0.3	0.1	40.7	41.8	36.8
Hypopharynx	0.6	1.1	0.3	0.1	0.2	0.0	30.9	30.5	32.2
Other oral cavity & pharynx	0.2	0.3	0.1	0.5	0.8	0.2	35.4	37.0	31.2
Digestive System:	85.3	104.2	69.9	42.9	55.1	33.3	44.6	42.8	46.6
Esophagus	4.4	7.7	1.8	4.3	7.6	1.6	17.3	17.5	16.5
Stomach	7.5	10.4	5.3	3.5	4.9	2.5	27.7	25.8	30.4
Small intestine	2.1	2.5	1.7	0.4	0.4	0.3	64.5	64.6	64.5
Colon & Rectum:	45.0	52.2	39.3	16.4	19.6	13.9	64.9	65.1	64.6
Colon	32.2	36.1	29.1	-	-	-	64.2	64.7	63.8
Rectum	12.8	16.1	10.1	-	-	-	66.5	66.1	67.0
Anus, anal canal & anorectum	1.7	1.5	1.9	0.2	0.2	0.2	65.6	59.8	69.5
Liver & intrahepatic bile duct	7.7	11.9	4.0	5.6	8.3	3.4	16.1	15.9	16.7
Gallbladder	1.2	0.8	1.4	0.6	0.5	0.8	17.5	15.7	18.2
Other biliary	1.8	2.3	1.5	0.4	0.5	0.4	16.1	17.2	14.7
Pancreas	12.2	13.9	10.9	10.9	12.5	9.6	6.0	5.6	6.5
Retroperitoneum	0.4	0.4	0.4	0.1	0.1	0.1	53.2	53.0	53.5
Peritoneum, omentum & mesentery	0.6	0.1	1.1	0.3	0.1	0.4	30.7	41.4	30.0
Other digestive system	0.5	0.6	0.5	0.3	0.4	0.2	10.9	10.6	11.1
Respiratory System:	65.7	81.6	53.8	50.9	65.9	39.8	19.6	18.8	20.6
Nose, nasal cavity & middle ear	0.7	0.9	0.5	0.2	0.2	0.1	55.5	56.0	54.8
Larynx	3.4	6.0	1.3	1.1	2.0	0.4	60.6	61.5	57.2
Lung & bronchus	61.4	74.3	51.9	49.5	63.5	39.2	16.6	14.3	19.2
Pleura ^d	0.0	0.0	0.0	0.1	0.1	0.0	22.2	16.3	31.1
Trachea & other respiratory organs	0.2	0.3	0.1	0.1	0.1	0.0	49.8	52.1	44.2
Bones & joints	0.9	1.1	0.8	0.4	0.5	0.3	66.4	64.0	69.3
Soft tissue (including heart)	3.3	4.0	2.8	1.3	1.5	1.1	66.1	65.2	67.1
Skin (excl. basal & squamous):	23.1	30.1	18.1	3.6	5.6	2.1	90.8	88.9	93.3
Melanoma of the skin	21.1	27.4	16.7	2.7	4.1	1.7	91.3	89.4	93.7
Other non-epithelial skin	2.0	2.7	1.4	0.9	1.5	0.4	84.9	82.5	87.9
Breast	66.8	1.2	123.8	12.7	0.3	22.6	89.2	83.5	89.2
Breast (<i>in situ</i>)	16.6	0.2	31.4	-	-	-	100.0	100.0	100.0

Note: Incidence and death rates are per 100,000 and are age-adjusted to the 2000 US Std Population (19 age groups - Census P25-1130).

^a SEER 18 areas (San Francisco, Connecticut, Detroit, Hawaii, Iowa, New Mexico, Seattle, Utah, Atlanta, San Jose-Monterey, Los Angeles, Alaska Native Registry, Rural Georgia, California excluding SF/SJM/LA, Kentucky, Louisiana, New Jersey and Georgia excluding ATL/RG).

^b US Mortality Files, National Center for Health Statistics, Centers for Disease Control and Prevention.

^c SEER 18 areas. Based on follow-up of patients into 2010.

^d Mesotheliomas of the Pleura are included in the separate group Mesothelioma for incidence but are included in the Pleura grouping for mortality.

- Statistic could not be calculated due to less than 16 cases in the time interval.

Table 1.5 - continued
Age-Adjusted SEER Incidence and U.S. Death Rates and 5-Year Relative Survival (Percent)
By Primary Cancer Site, Sex and Time Period

All Races

Site	Incidence ^a (2006-2010)			US Mortality ^b (2006-2010)			Survival ^c (%) (2003-2009)		
	Total	Males	Females	Total	Males	Females	Total	Males	Females
Female Genital System:	26.1	-	48.8	8.7	-	15.6	68.1	-	68.1
Cervix uteri	4.1	-	7.9	1.2	-	2.4	67.9	-	67.9
Corpus uteri	12.6	-	23.6	1.1	-	1.9	82.8	-	82.8
Uterus, NOS	0.3	-	0.6	1.3	-	2.4	26.6	-	26.6
Ovary ^d	6.8	-	12.5	4.5	-	8.1	44.2	-	44.2
Vagina	0.4	-	0.7	0.1	-	0.2	50.9	-	50.9
Vulva	1.3	-	2.4	0.3	-	0.5	70.8	-	70.8
Other female genital system	0.5	-	0.9	0.1	-	0.2	60.1	-	60.1
Male Genital System:	71.8	158.6	-	9.2	23.5	-	98.9	98.9	-
Prostate	68.6	152.0	-	9.0	23.0	-	99.2	99.2	-
Testis	2.8	5.5	-	0.1	0.2	-	95.3	95.3	-
Penis	0.4	0.8	-	0.1	0.2	-	68.4	68.4	-
Other male genital system	0.1	0.3	-	0.0	0.0	-	87.4	87.4	-
Urinary System:	36.9	58.9	20.0	8.6	13.8	5.0	74.8	76.1	72.0
Urinary bladder	20.7	36.6	8.9	4.4	7.7	2.2	77.9	79.4	73.1
Kidney & renal pelvis	15.3	21.0	10.6	4.0	5.8	2.6	71.8	71.7	72.1
Ureter	0.6	0.8	0.4	0.1	0.1	0.1	50.4	52.6	47.5
Other urinary system	0.3	0.5	0.2	0.1	0.2	0.1	51.7	55.3	45.8
Eye & Orbit	0.8	0.9	0.7	0.1	0.1	0.1	81.7	81.4	82.1
Brain & Nervous System: ^e	6.5	7.7	5.4	4.3	5.2	3.5	33.5	32.3	35.0
Brain	6.1	7.3	5.0	-	-	-	30.4	29.7	31.2
Cranial nerves & other nervous system	0.4	0.4	0.4	-	-	-	77.7	74.1	80.9
Endocrine System:	13.0	7.0	18.8	0.8	0.8	0.8	95.6	91.0	97.2
Thyroid	12.2	6.1	18.2	0.5	0.5	0.5	97.7	95.2	98.5
Other endocrine & thymus	0.8	0.9	0.7	0.3	0.3	0.3	63.9	64.6	63.0
Lymphoma:	22.5	27.0	18.8	6.8	8.7	5.4	71.3	70.0	72.7
Hodgkin lymphoma	2.8	3.2	2.4	0.4	0.5	0.3	85.1	84.3	86.0
Non-Hodgkin lymphoma	19.7	23.9	16.4	6.4	8.2	5.1	69.0	67.6	70.6
Myeloma	5.9	7.5	4.8	3.4	4.3	2.7	43.2	44.1	42.1
Leukemia:	12.8	16.3	10.0	7.1	9.5	5.3	56.0	56.7	55.2
Lymphocytic:	6.4	8.4	4.7	2.0	2.8	1.4	75.5	75.5	75.4
Acute lymphocytic	1.7	1.9	1.5	0.5	0.5	0.4	66.0	66.0	66.0
Chronic lymphocytic	4.3	5.9	3.1	1.4	2.1	0.9	79.2	78.4	80.3
Other lymphocytic	0.4	0.7	0.2	0.1	0.2	0.1	80.7	85.0	68.8
Myeloid & Monocytic:	5.7	7.1	4.7	3.4	4.5	2.6	35.3	34.8	36.0
Acute myeloid	3.7	4.5	3.1	2.8	3.7	2.2	24.2	22.7	25.9
Chronic myeloid	1.6	2.1	1.2	0.3	0.4	0.2	61.0	60.1	62.2
Acute monocytic	0.3	0.3	0.2	0.0	0.0	0.0	23.3	23.6	23.0
Other myeloid & monocytic	0.2	0.2	0.1	0.2	0.3	0.1	32.8	31.6	34.0
Other leukemia:	0.6	0.8	0.6	1.7	2.2	1.3	28.8	28.5	29.0
Other acute leukemia	0.2	0.3	0.2	0.7	0.9	0.5	17.2	18.0	16.3
Aleukemic, subleukemic & NOS	0.4	0.5	0.4	1.0	1.4	0.8	36.8	36.6	37.0
Kaposi Sarcoma ^f	0.6	1.0	0.1	-	-	-	71.1	70.5	75.9
Mesothelioma ^f	1.0	1.9	0.4	-	-	-	8.4	6.6	13.8
Ill-defined & unspecified	9.1	10.6	8.0	13.1	16.6	10.6	17.1	21.1	13.3

Note: Incidence and death rates are per 100,000 and are age-adjusted to the 2000 US Std Population (19 age groups - Census P25-1130).

^a SEER 18 areas (San Francisco, Connecticut, Detroit, Hawaii, Iowa, New Mexico, Seattle, Utah, Atlanta, San Jose-Monterey, Los Angeles, Alaska Native Registry, Rural Georgia, California excluding SF/SJM/LA, Kentucky, Louisiana, New Jersey and Georgia excluding ATL/RG).

^b US Mortality Files, National Center for Health Statistics, Centers for Disease Control and Prevention.

^c SEER 18 areas. Based on follow-up of patients into 2010.

^d Ovary excludes borderline cases or histologies 8442, 8451, 8462, 8472, and 8473.

^e Due to coding changes, Brain & Nervous System mortality are no longer shown separately.

^f Rate not shown for mortality. Category did not exist in mortality coding until 1999.

- Statistic could not be calculated due to less than 16 cases in the time interval.

Table 1.6
Age-Adjusted SEER Incidence and U.S. Death Rates and 5-Year Relative Survival (Percent)
By Primary Cancer Site, Sex and Time Period

Site	Whites								
	Incidence ^a (2006-2010)			US Mortality ^b (2006-2010)			Survival ^c (%) (2003-2009)		
	Total	Males	Females	Total	Males	Females	Total	Males	Females
All Sites	471.9	539.1	424.4	175.8	213.1	149.8	66.5	66.8	66.1
Oral Cavity & Pharynx:	11.2	16.7	6.3	2.4	3.6	1.4	63.9	63.6	64.6
Lip	0.8	1.3	0.4	0.0	0.0	0.0	89.7	90.1	88.7
Tongue	3.4	5.1	1.9	0.6	0.9	0.4	64.1	65.0	61.9
Salivary gland	1.3	1.8	1.0	0.2	0.4	0.1	71.0	63.8	81.0
Floor of mouth	0.6	0.9	0.4	0.0	0.0	0.0	52.0	49.3	58.7
Gum & other oral cavity	1.5	1.8	1.3	0.4	0.4	0.3	60.0	59.0	61.2
Nasopharynx	0.4	0.6	0.2	0.2	0.2	0.1	54.1	54.5	52.9
Tonsil	1.9	3.3	0.7	0.2	0.4	0.1	72.4	73.1	68.9
Oropharynx	0.4	0.6	0.2	0.2	0.3	0.1	44.7	46.4	38.3
Hypopharynx	0.6	1.1	0.3	0.1	0.1	0.0	33.7	33.7	34.0
Other oral cavity & pharynx	0.2	0.3	0.1	0.5	0.8	0.2	37.7	39.5	33.0
Digestive System:	82.6	100.9	67.5	41.5	53.2	32.0	45.3	43.7	47.2
Esophagus	4.6	8.0	1.8	4.4	7.8	1.6	18.2	18.5	17.2
Stomach	6.6	9.2	4.5	3.1	4.2	2.2	26.2	24.4	29.2
Small intestine	2.0	2.5	1.7	0.3	0.4	0.3	65.0	65.9	63.9
Colon & Rectum:	44.2	51.3	38.4	15.9	19.1	13.4	65.5	65.9	65.1
Colon	31.7	35.6	28.5	-	-	-	65.1	65.6	64.6
Rectum	12.6	15.7	9.9	-	-	-	66.6	66.5	66.6
Anus, anal canal & anorectum	1.8	1.5	2.1	0.2	0.2	0.3	67.1	61.7	70.5
Liver & intrahepatic bile duct	6.7	10.4	3.5	5.2	7.6	3.2	15.4	15.3	15.7
Gallbladder	1.1	0.8	1.4	0.6	0.4	0.7	17.7	15.0	18.7
Other biliary	1.8	2.2	1.5	0.5	0.5	0.4	15.9	17.2	14.5
Pancreas	12.1	13.8	10.7	10.8	12.5	9.4	6.0	5.6	6.4
Retroperitoneum	0.4	0.4	0.4	0.1	0.1	0.1	53.6	52.4	54.6
Peritoneum, omentum & mesentery	0.7	0.1	1.2	0.3	0.1	0.4	30.4	39.9	29.7
Other digestive system	0.5	0.6	0.5	0.3	0.4	0.2	10.4	10.7	10.2
Respiratory System:	67.4	81.8	56.5	51.5	65.6	41.0	19.9	19.1	20.8
Nose, nasal cavity & middle ear	0.7	0.9	0.5	0.2	0.2	0.1	56.2	57.5	54.5
Larynx	3.4	6.0	1.3	1.1	1.9	0.4	61.5	62.4	57.8
Lung & bronchus	63.1	74.5	54.6	50.2	63.2	40.4	16.9	14.5	19.5
Pleura ^d	0.0	0.1	0.0	0.1	0.1	0.0	20.2	15.9	27.1
Trachea & other respiratory organs	0.2	0.3	0.1	0.1	0.1	0.1	49.9	53.4	40.4
Bones & joints	1.0	1.2	0.8	0.4	0.5	0.4	66.9	63.9	70.6
Soft tissue (including heart)	3.4	4.1	2.8	1.3	1.5	1.1	67.2	66.1	68.5
Skin (excl. basal & squamous):	27.0	34.8	21.4	4.1	6.3	2.4	90.5	88.5	93.1
Melanoma of the skin	25.0	31.9	20.0	3.1	4.6	2.0	91.1	89.1	93.5
Other non-epithelial skin	2.0	2.9	1.4	0.9	1.6	0.5	83.1	80.3	86.8
Breast	68.0	1.2	127.4	12.3	0.3	22.1	90.4	85.8	90.4
Breast (<i>in situ</i>)	16.7	0.1	31.9	-	-	-	100.0	100.0	100.0

Note: Incidence and death rates are per 100,000 and are age-adjusted to the 2000 US Std Population (19 age groups - Census P25-1130).

^a SEER 18 areas (San Francisco, Connecticut, Detroit, Hawaii, Iowa, New Mexico, Seattle, Utah, Atlanta, San Jose-Monterey, Los Angeles, Alaska Native Registry, Rural Georgia, California excluding SF/SJM/LA, Kentucky, Louisiana, New Jersey and Georgia excluding ATL/RG).

^b US Mortality Files, National Center for Health Statistics, Centers for Disease Control and Prevention.

^c SEER 18 areas. Based on follow-up of patients into 2010.

^d Mesotheliomas of the Pleura are included in the separate group Mesothelioma for incidence but are included in the Pleura grouping for mortality.

- Statistic could not be calculated due to less than 16 cases in the time interval.

Table 1.6 - continued
Age-Adjusted SEER Incidence and U.S. Death Rates and 5-Year Relative Survival (Percent)
By Primary Cancer Site, Sex and Time Period

Site	Whites								
	Incidence ^a (2006-2010)			US Mortality ^b (2006-2010)			Survival ^c (%) (2003-2009)		
	Total	Males	Females	Total	Males	Females	Total	Males	Females
Female Genital System:	26.7	-	50.5	8.5	-	15.5	69.3	-	69.3
Cervix uteri	4.0	-	7.9	1.1	-	2.2	69.1	-	69.1
Corpus uteri	13.0	-	24.5	1.0	-	1.8	84.9	-	84.9
Uterus, NOS	0.3	-	0.6	1.2	-	2.2	26.7	-	26.7
Ovary ^d	7.1	-	13.3	4.7	-	8.4	44.0	-	44.0
Vagina	0.4	-	0.7	0.1	-	0.2	51.9	-	51.9
Vulva	1.4	-	2.6	0.3	-	0.5	70.5	-	70.5
Other female genital system	0.5	-	0.9	0.1	-	0.2	60.9	-	60.9
Male Genital System:	70.0	152.6	-	8.5	21.7	-	99.2	99.2	-
Prostate	66.1	144.9	-	8.3	21.2	-	99.5	99.5	-
Testis	3.3	6.6	-	0.1	0.3	-	95.6	95.6	-
Penis	0.4	0.9	-	0.1	0.2	-	67.4	67.4	-
Other male genital system	0.1	0.3	-	0.0	0.0	-	89.0	89.0	-
Urinary System:	39.3	62.7	21.0	8.9	14.3	5.0	75.3	76.5	72.6
Urinary bladder	22.5	39.8	9.5	4.6	8.1	2.2	78.3	79.7	74.0
Kidney & renal pelvis	15.8	21.5	10.9	4.1	5.9	2.6	72.1	71.9	72.3
Ureter	0.6	0.9	0.4	0.1	0.2	0.1	49.9	53.1	45.4
Other urinary system	0.3	0.5	0.1	0.1	0.2	0.1	52.5	54.4	48.6
Eye & Orbit	0.9	1.1	0.8	0.1	0.1	0.1	81.3	81.2	81.5
Brain & Nervous System: ^e	7.1	8.4	6.0	4.6	5.6	3.8	32.3	31.4	33.4
Brain	6.7	8.0	5.5	-	-	-	29.2	28.9	29.7
Cranial nerves & other nervous system	0.4	0.4	0.4	-	-	-	79.2	76.5	81.8
Endocrine System:	13.7	7.4	20.0	0.8	0.8	0.8	96.1	91.8	97.5
Thyroid	13.0	6.6	19.4	0.5	0.5	0.5	97.9	95.4	98.7
Other endocrine & thymus	0.7	0.8	0.6	0.3	0.3	0.3	64.1	65.6	62.2
Lymphoma:	23.7	28.3	19.9	7.1	9.0	5.7	71.9	70.9	73.0
Hodgkin lymphoma	3.0	3.4	2.6	0.4	0.5	0.3	85.6	85.1	86.2
Non-Hodgkin lymphoma	20.7	25.0	17.3	6.7	8.5	5.3	69.6	68.5	70.8
Myeloma	5.5	7.1	4.2	3.1	4.0	2.5	43.1	44.7	41.2
Leukemia:	13.5	17.2	10.5	7.3	9.8	5.5	56.3	56.8	55.6
Lymphocytic:	6.9	9.0	5.2	2.1	2.9	1.5	75.7	75.8	75.7
Acute lymphocytic	1.8	2.1	1.6	0.5	0.6	0.4	66.0	66.1	65.8
Chronic lymphocytic	4.6	6.3	3.3	1.5	2.1	1.0	79.3	78.5	80.5
Other lymphocytic	0.4	0.7	0.2	0.1	0.2	0.1	81.5	85.7	69.6
Myeloid & Monocytic:	5.9	7.4	4.8	3.5	4.6	2.7	34.3	33.7	34.9
Acute myeloid	3.8	4.6	3.2	2.9	3.8	2.3	23.4	22.0	25.1
Chronic myeloid	1.6	2.1	1.2	0.3	0.4	0.2	59.6	59.0	60.5
Acute monocytic	0.3	0.4	0.2	0.0	0.0	0.0	23.4	23.4	23.3
Other myeloid & monocytic	0.2	0.2	0.1	0.2	0.3	0.2	31.3	30.5	32.2
Other leukemia:	0.6	0.8	0.6	1.7	2.3	1.3	28.1	27.4	28.8
Other acute leukemia	0.2	0.3	0.2	0.7	0.9	0.5	15.5	15.9	14.9
Aleukemic, subleukemic & NOS	0.4	0.5	0.4	1.0	1.4	0.8	37.1	36.2	37.6
Kaposi Sarcoma ^f	0.5	0.9	0.1	-	-	-	76.8	76.0	84.1
Mesothelioma ^f	1.1	2.1	0.5	-	-	-	8.3	6.5	14.0
Ill-defined & unspecified	9.3	10.8	8.1	13.1	16.6	10.6	17.6	22.3	13.1

Note: Incidence and death rates are per 100,000 and are age-adjusted to the 2000 US Std Population (19 age groups - Census P25-1130).

^a SEER 18 areas (San Francisco, Connecticut, Detroit, Hawaii, Iowa, New Mexico, Seattle, Utah, Atlanta, San Jose-Monterey, Los Angeles, Alaska Native Registry, Rural Georgia, California excluding SF/SJM/LA, Kentucky, Louisiana, New Jersey and Georgia excluding ATL/RG).

^b US Mortality Files, National Center for Health Statistics, Centers for Disease Control and Prevention.

^c SEER 18 areas. Based on follow-up of patients into 2010.

^d Ovary excludes borderline cases or histologies 8442, 8451, 8462, 8472, and 8473.

^e Due to coding changes, Brain & Nervous System mortality are no longer shown separately.

^f Rate not shown for mortality. Category did not exist in mortality coding until 1999.

- Statistic could not be calculated due to less than 16 cases in the time interval.

Table 1.7
Age-Adjusted SEER Incidence and U.S. Death Rates and 5-Year Relative Survival (Percent)
By Primary Cancer Site, Sex and Time Period

Site	Blacks								
	Incidence ^a (2006-2010)			US Mortality ^b (2006-2010)			Survival ^c (%) (2003-2009)		
	Total	Males	Females	Total	Males	Females	Total	Males	Females
All Sites	483.6	610.4	397.5	210.3	276.6	171.2	59.2	62.3	55.7
Oral Cavity & Pharynx:	9.6	14.9	5.4	3.0	5.2	1.4	43.2	38.6	53.0
Lip	0.1	0.1	0.1	-	-	-	76.9	60.5	95.1
Tongue	2.2	3.5	1.2	0.6	0.9	0.3	35.3	33.7	38.0
Salivary gland	1.0	1.1	1.0	0.2	0.3	0.1	73.2	63.5	80.9
Floor of mouth	0.5	0.9	0.3	0.0	0.1	0.0	38.0	34.9	46.0
Gum & other oral cavity	1.4	1.7	1.2	0.3	0.5	0.2	54.4	45.5	64.2
Nasopharynx	0.7	1.1	0.3	0.3	0.4	0.1	53.9	54.1	53.1
Tonsil	1.7	3.0	0.6	0.3	0.5	0.1	46.9	46.8	47.2
Oropharynx	0.7	1.2	0.3	0.4	0.6	0.2	20.4	20.1	21.0
Hypopharynx	1.0	2.0	0.3	0.2	0.3	0.1	18.1	16.6	24.1
Other oral cavity & pharynx	0.3	0.4	0.2	0.8	1.5	0.3	21.4	21.8	19.0
Digestive System:	106.7	132.0	88.5	57.7	76.0	45.0	39.1	36.1	42.3
Esophagus	5.1	8.4	2.7	4.4	7.7	2.1	11.3	10.3	13.7
Stomach	11.6	16.1	8.7	6.7	9.8	4.7	26.7	24.2	29.8
Small intestine	3.3	3.9	2.8	0.6	0.7	0.5	63.4	58.2	67.6
Colon & Rectum:	55.3	64.3	49.2	22.8	28.7	19.0	57.5	56.7	58.2
Colon	41.6	47.2	37.8	-	-	-	56.3	56.3	56.4
Rectum	13.7	17.1	11.4	-	-	-	61.0	58.0	64.1
Anus, anal canal & anorectum	1.7	1.9	1.6	0.2	0.3	0.2	55.2	48.3	61.9
Liver & intrahepatic bile duct	9.1	15.1	4.5	7.4	11.8	4.1	11.3	9.3	16.0
Gallbladder	1.5	1.2	1.7	0.8	0.7	1.0	14.2	17.6	12.8
Other biliary	1.7	2.0	1.5	0.4	0.4	0.4	13.2	12.1	14.2
Pancreas	15.8	17.6	14.3	13.7	15.3	12.5	5.5	5.2	5.7
Retroperitoneum	0.4	0.3	0.4	0.0	0.0	0.0	46.0	48.9	44.6
Peritoneum, omentum & mesentery	0.3	0.1	0.5	0.2	0.1	0.2	30.6	51.6	26.4
Other digestive system	0.7	1.0	0.6	0.4	0.5	0.3	12.6	13.7	11.9
Respiratory System:	75.6	106.5	54.5	55.8	82.8	38.1	17.1	17.0	17.2
Nose, nasal cavity & middle ear	0.6	0.9	0.4	0.2	0.2	0.1	48.2	45.6	53.0
Larynx	5.0	9.6	1.8	2.0	3.9	0.7	54.5	55.2	51.4
Lung & bronchus	69.7	95.8	52.2	53.5	78.5	37.2	13.5	12.0	15.4
Pleura ^d	-	-	-	0.0	0.1	-	-	-	-
Trachea & other respiratory organs	0.2	0.3	0.1	0.1	0.1	0.0	50.9	48.6	54.4
Bones & joints	0.8	0.9	0.7	0.4	0.6	0.3	62.7	60.5	64.9
Soft tissue (including heart)	3.3	3.6	3.1	1.4	1.4	1.4	59.2	58.7	59.7
Skin (excl. basal & squamous):	2.1	2.2	2.0	0.9	1.3	0.6	84.9	83.3	85.5
Melanoma of the skin	1.0	1.1	1.0	0.4	0.5	0.4	73.1	64.0	79.1
Other non-epithelial skin	1.1	1.2	1.1	0.5	0.8	0.2	92.7	96.5	89.6
Breast	69.3	1.9	121.4	18.2	0.5	30.8	78.6	69.6	78.7
Breast (<i>in situ</i>)	16.6	0.3	29.5	-	-	-	100.0	98.7	100.0

Note: Incidence and death rates are per 100,000 and are age-adjusted to the 2000 US Std Population (19 age groups - Census P25-1130).

^a SEER 18 areas (San Francisco, Connecticut, Detroit, Hawaii, Iowa, New Mexico, Seattle, Utah, Atlanta, San Jose-Monterey, Los Angeles, Alaska Native Registry, Rural Georgia, California excluding SF/SJM/LA, Kentucky, Louisiana, New Jersey and Georgia excluding ATL/RG).

^b US Mortality Files, National Center for Health Statistics, Centers for Disease Control and Prevention.

^c SEER 18 areas. Based on follow-up of patients into 2010.

^d Mesotheliomas of the Pleura are included in the separate group Mesothelioma for incidence but are included in the Pleura grouping for mortality.

- Statistic could not be calculated due to less than 16 cases in the time interval.

Table 1.7 - continued
 Age-Adjusted SEER Incidence and U.S. Death Rates and 5-Year Relative Survival (Percent)
 By Primary Cancer Site, Sex and Time Period

Site	Blacks								
	Incidence ^a (2006-2010)			US Mortality ^b (2006-2010)			Survival ^c (%) (2003-2009)		
	Total	Males	Females	Total	Males	Females	Total	Males	Females
Female Genital System:	25.5	-	44.9	11.3	-	19.1	54.7	-	54.7
Cervix uteri	5.3	-	9.6	2.4	-	4.2	59.2	-	59.2
Corpus uteri	11.9	-	21.0	1.8	-	3.0	62.5	-	62.5
Uterus, NOS	0.7	-	1.2	2.6	-	4.4	25.0	-	25.0
Ovary ^d	5.6	-	9.7	4.0	-	6.7	36.1	-	36.1
Vagina	0.5	-	0.9	0.2	-	0.3	45.6	-	45.6
Vulva	1.0	-	1.7	0.2	-	0.3	69.4	-	69.4
Other female genital system	0.4	-	0.8	0.2	-	0.3	49.5	-	49.5
Male Genital System:	97.4	230.9	-	18.1	51.4	-	96.5	96.5	-
Prostate	96.3	228.5	-	18.0	50.9	-	96.7	96.7	-
Testis	0.6	1.4	-	0.1	0.1	-	89.5	89.5	-
Penis	0.3	0.9	-	0.1	0.3	-	61.5	61.5	-
Other male genital system	0.1	0.2	-	0.0	0.0	-	78.5	78.5	-
Urinary System:	30.6	46.1	19.9	7.7	11.4	5.4	67.3	69.3	64.0
Urinary bladder	12.5	21.0	7.1	3.7	5.5	2.6	64.9	69.5	56.1
Kidney & renal pelvis	17.4	24.1	12.3	3.9	5.7	2.6	69.6	69.6	69.6
Ureter	0.3	0.4	0.2	0.1	0.1	0.1	50.0	52.6	47.9
Other urinary system	0.4	0.6	0.3	0.1	0.1	0.2	39.8	50.1	32.9
Eye & Orbit	0.2	0.3	0.2	0.0	0.0	0.0	79.1	75.5	83.4
Brain & Nervous System: ^e	4.1	4.7	3.7	2.5	3.0	2.1	39.6	35.5	43.7
Brain	3.7	4.3	3.3	-	-	-	36.0	33.1	38.9
Cranial nerves & other nervous system	0.4	0.3	0.4	-	-	-	70.1	60.8	75.0
Endocrine System:	8.1	4.2	11.4	0.9	0.8	0.9	92.5	83.9	94.9
Thyroid	7.1	3.2	10.5	0.5	0.4	0.6	96.6	91.9	97.4
Other endocrine & thymus	0.9	1.0	0.9	0.4	0.4	0.3	63.4	62.8	63.8
Lymphoma:	16.9	20.5	14.0	4.9	6.3	3.9	65.5	61.6	70.0
Hodgkin lymphoma	2.7	3.2	2.3	0.4	0.4	0.3	80.5	77.5	83.7
Non-Hodgkin lymphoma	14.2	17.4	11.8	4.6	5.9	3.6	61.9	57.9	66.6
Myeloma	11.9	14.4	10.2	6.4	7.9	5.4	42.8	41.9	43.6
Leukemia:	9.8	12.6	7.8	6.1	8.2	4.8	49.5	50.4	48.5
Lymphocytic:	4.1	5.8	2.9	1.7	2.6	1.2	65.8	64.9	67.0
Acute lymphocytic	0.9	1.2	0.7	0.3	0.4	0.2	63.2	62.8	63.7
Chronic lymphocytic	2.9	4.2	2.0	1.3	2.0	0.9	67.5	66.1	69.5
Other lymphocytic	0.2	0.4	0.1	0.1	0.2	0.1	58.8	63.2	46.9
Myeloid & Monocytic:	4.9	5.9	4.3	2.7	3.4	2.2	38.4	38.5	38.2
Acute myeloid	3.1	3.6	2.8	2.2	2.7	1.9	25.5	25.1	25.7
Chronic myeloid	1.5	1.9	1.3	0.3	0.5	0.3	62.4	60.2	64.8
Acute monocytic	0.1	0.2	0.1	0.0	-	-	25.2	23.8	26.3
Other myeloid & monocytic	0.1	0.2	0.1	0.1	0.2	0.1	40.6	41.0	39.3
Other leukemia:	0.8	0.9	0.6	1.7	2.2	1.4	27.3	27.3	26.8
Other acute leukemia	0.2	0.3	0.2	0.5	0.7	0.4	22.6	22.2	22.2
Aleukemic, subleukemic & NOS	0.5	0.6	0.5	1.2	1.5	1.0	29.8	30.3	28.5
Kaposi Sarcoma ^f	1.0	2.0	0.2	-	-	-	52.5	52.2	54.0
Mesothelioma ^f	0.6	1.1	0.3	-	-	-	8.3	6.5	10.2
Ill-defined & unspecified	10.2	11.4	9.2	15.1	19.8	12.0	12.5	12.9	12.0

Note: Incidence and death rates are per 100,000 and are age-adjusted to the 2000 US Std Population (19 age groups - Census P25-1130).

^a SEER 18 areas (San Francisco, Connecticut, Detroit, Hawaii, Iowa, New Mexico, Seattle, Utah, Atlanta, San Jose-Monterey, Los Angeles, Alaska Native Registry, Rural Georgia, California excluding SF/SJM/LA, Kentucky, Louisiana, New Jersey and Georgia excluding ATL/RG).

^b US Mortality Files, National Center for Health Statistics, Centers for Disease Control and Prevention.

^c SEER 18 areas. Based on follow-up of patients into 2010.

^d Ovary excludes borderline cases or histologies 8442, 8451, 8462, 8472, and 8473.

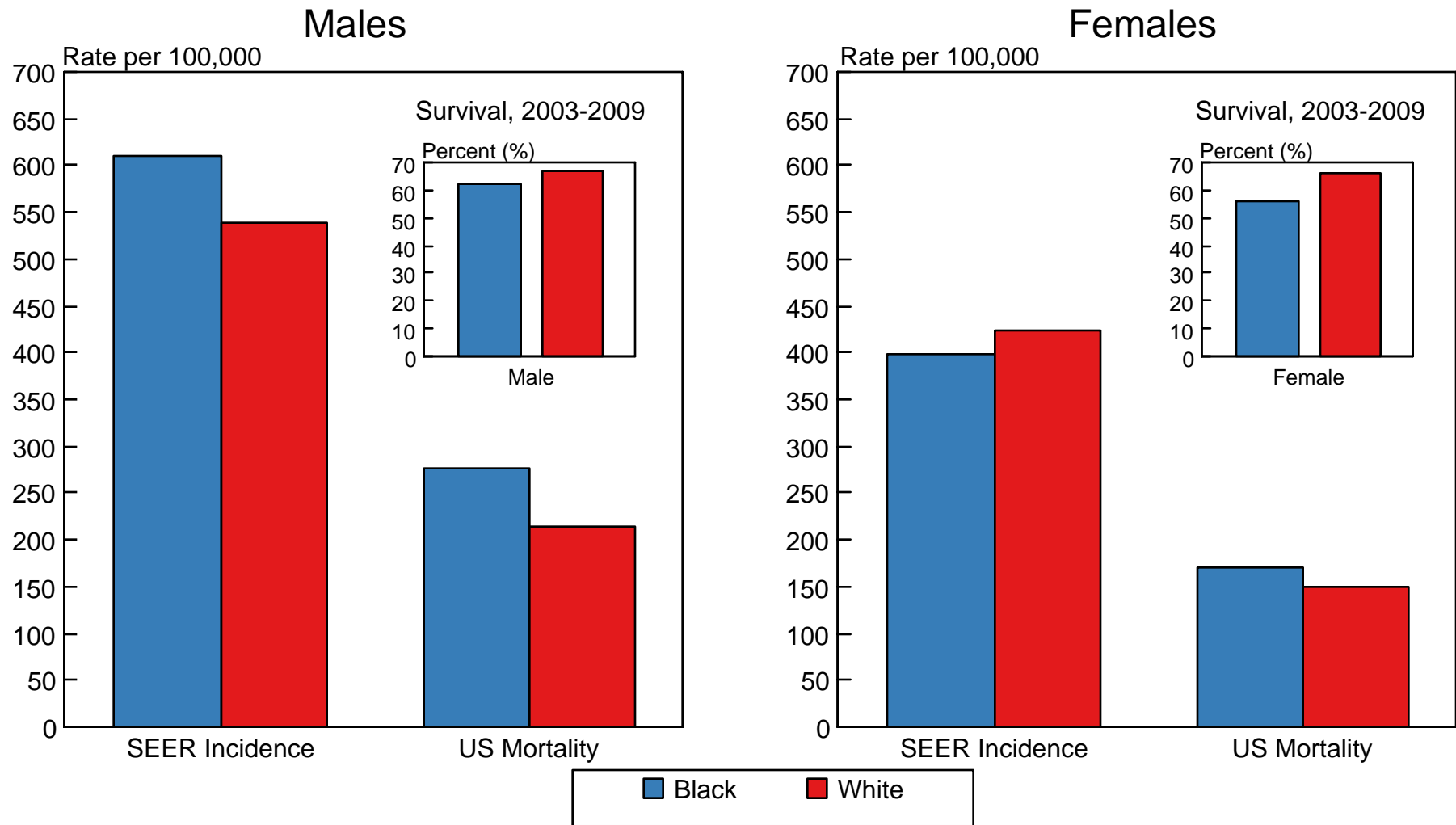
^e Due to coding changes, Brain & Nervous System mortality are no longer shown separately.

^f Rate not shown for mortality. Category did not exist in mortality coding until 1999.

- Statistic could not be calculated due to less than 16 cases in the time interval.

Figure 1.9

SEER Incidence^a and US Death Rates,^b 2006-2010 5-Year Relative Survival,^c 2003-2009 All Cancer Combined, by Race and Sex



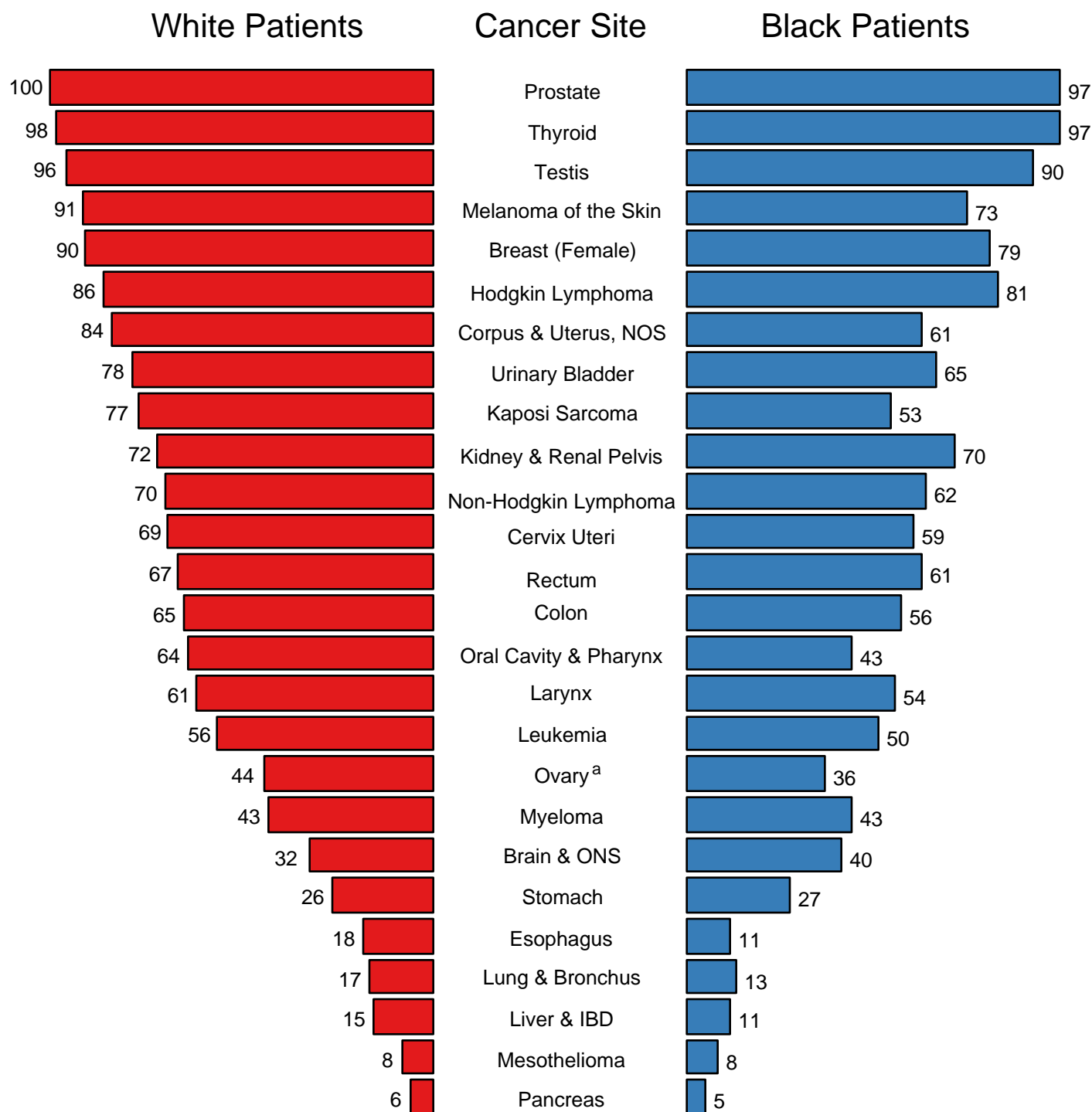
^a Incidence rates are from the SEER 18 areas (San Francisco, Connecticut, Detroit, Hawaii, Iowa, New Mexico, Seattle, Utah, Atlanta, San Jose-Monterey, Los Angeles, Alaska Native Registry, Rural Georgia, California excluding SF/SJM/LA, Kentucky, Louisiana, New Jersey and Georgia excluding ATL/RG) and are age-adjusted to the 2000 US Std Population (19 age groups - Census P25-1103).

^b Death rates are from the US Mortality Files, National Center for Health Statistics, Centers for Disease Control and Prevention and are age-adjusted to the 2000 US Std Population (19 age groups - Census P25-1103).

^c Survival rates are from the SEER 18 areas (San Francisco, Connecticut, Detroit, Hawaii, Iowa, New Mexico, Seattle, Utah, Atlanta, San Jose-Monterey, Los Angeles, Alaska Native Registry, Rural Georgia, California excluding SF/SJM/LA, Kentucky, Louisiana, New Jersey and Georgia excluding ATL/RG).

Figure 1.11

5-Year Relative Survival (%) SEER Program, 2003-2009 Both Sexes, by Race and Cancer Site



Source: SEER 18 areas (San Francisco, Connecticut, Detroit, Hawaii, Iowa, New Mexico, Seattle, Utah, Atlanta, San Jose-Monterey, Los Angeles, Alaska Native Registry, Rural Georgia, California excluding SF/SJM/LA, Kentucky, Louisiana, New Jersey and Georgia excluding ATL/RG).

^a Ovary excludes borderline cases or histologies 8442, 8451, 8462, 8472, and 8473.

Table 2.8
All Cancer Sites (Invasive)

5-Year Relative and Period Survival (Percent) by Race, Sex, Diagnosis Year and Age

	All Races			Whites			Blacks		
	Total	Males	Females	Total	Males	Females	Total	Males	Females
5-Year Relative Survival (Percent)									
Year of Diagnosis:									
1960-1963 ^a	-	-	-	39	-	-	27	-	-
1970-1973 ^a	-	-	-	43	-	-	31	-	-
1975-1977 ^b	48.9	41.7	55.8	49.8	42.7	56.5	39.0	32.7	46.2
1978-1980 ^b	49.0	43.1	54.9	50.0	44.3	55.6	38.9	33.3	45.5
1981-1983 ^b	50.2	45.2	55.1	51.3	46.5	56.0	38.8	34.1	44.3
1984-1986 ^b	52.4	47.1	57.6	53.6	48.6	58.5	40.1	35.4	45.4
1987-1989 ^b	55.3	51.1	59.6	56.6	52.8	60.6	42.9	38.8	47.7
1990-1992 ^b	59.9	59.1	60.9	61.3	60.8	62.0	47.7	47.5	48.1
1993-1995 ^b	61.2	60.8	61.7	62.4	62.0	62.8	52.6	54.3	50.5
1996-1998 ^b	63.3	63.0	63.6	64.3	64.0	64.7	55.0	57.7	51.9
1999-2002 ^b	66.3	66.7	65.9	67.5	67.9	67.1	58.1	61.7	54.0
2003-2009 ^b	68.1 ^e	68.8 ^e	67.3 ^e	69.2 ^e	69.9 ^e	68.4 ^e	60.8 ^e	64.4 ^e	56.9 ^e
5-Year Period Survival (Percent) ^{cd}									
2009	66.7	67.3	66.1	67.3	67.8	66.8	60.2	63.1	57.0
5-Year Relative Survival (Percent), 2003-2009 ^c									
Age at Diagnosis:									
Ages <45	80.6	75.7	83.8	82.2	77.7	85.2	69.0	62.2	73.0
Ages 45-54	72.5	67.0	77.1	74.0	68.3	78.8	61.6	59.9	63.3
Ages 55-64	69.4	69.4	69.4	70.3	70.0	70.6	62.3	65.6	57.4
Ages 65-74	65.2	68.5	60.4	65.7	68.7	61.5	60.0	66.5	50.5
Ages 75+	52.1	56.7	47.6	52.8	56.9	48.8	43.2	50.7	36.9
Ages <65	72.7	69.8	75.7	73.9	70.8	77.0	63.4	63.3	63.6
Ages 65+	58.7	63.2	53.3	59.2	63.3	54.3	53.1	60.9	43.8

^a Based on End Results data from a series of hospital registries and one population-based registry.
^b SEER 9 areas (San Francisco, Connecticut, Detroit, Hawaii, Iowa, New Mexico, Seattle, Utah, Atlanta).
Based on follow-up of patients into 2010.
^c SEER 18 areas (San Francisco, Connecticut, Detroit, Hawaii, Iowa, New Mexico, Seattle, Utah, Atlanta, San Jose-Monterey, Los Angeles, Alaska Native Registry, Rural Georgia, California excluding SF/SJM/LA, Kentucky, Louisiana, New Jersey and Georgia excluding ATL/RG).
Based on follow-up of patients into 2010.
^d Period survival provides a 2009 estimate of survival by piecing together the most recent conditional survival estimates from several cohorts. It is computed here using three year calendar blocks (2007-2009: 0-1 year survival), (2006-2008: 1-2 year survival), (2005-2007: 2-3 year survival), (2004-2006: 3-4 year survival), (2003-2005: 4-5 years survival). The difference between 1975-1977 and 2003-2009 is statistically significant (p<.05).
^e The standard error is between 5 and 10 percentage points.
^f The standard error is greater than 10 percentage points.
^g -
- Statistic could not be calculated due to fewer than 25 cases during the time period.

Table 3.8
Cancer of the Brain and Other Nervous System (Invasive)

5-Year Relative and Period Survival (Percent) by Race, Sex, Diagnosis Year, Stage and Age

	All Races			Whites			Blacks		
	Total	Males	Females	Total	Males	Females	Total	Males	Females
5-Year Relative Survival (Percent)									
Year of Diagnosis:									
1960-1963 ^a	-	-	-	18	16	21	19	17	21
1970-1973 ^a	-	-	-	20	18	22	19	19	19
1975-1977 ^b	22.4	20.7	24.7	21.8	20.2	24.0	25.4	19.6	34.7 ^g
1978-1980 ^b	23.6	22.4	25.1	23.0	22.0	24.4	28.2	28.7	27.5
1981-1983 ^b	24.1	23.0	25.4	23.3	22.4	24.4	30.8	31.7	29.2 ^g
1984-1986 ^b	26.9	25.6	28.4	26.1	24.8	27.8	30.8	32.8	28.3
1987-1989 ^b	28.9	27.3	30.9	28.3	26.3	30.7	31.6	33.5	29.3
1990-1992 ^b	30.1	30.5	29.7	29.1	29.4	28.8	40.0	41.6	38.1
1993-1995 ^b	32.2	32.9	31.2	30.9	31.3	30.3	41.4	46.1	36.3
1996-1998 ^b	31.1	30.5	31.9	30.3	29.9	30.8	35.8	33.3	38.2
1999-2002 ^b	34.1	31.2	37.7	33.4	30.9	36.7	38.1	31.7	46.3
2003-2009 ^b	34.8 ^f	34.1 ^f	35.7 ^f	33.2 ^f	32.9 ^f	33.6 ^f	41.2 ^f	36.4 ^f	45.8
5-Year Period Survival (Percent) ^{cd}									
2009	33.8	32.8	35.1	32.4	31.8	33.2	40.1	35.4	44.6
Stage Distribution (%) 2003-2009 ^{ee}									
All Stages									
Number of cases	32,735	18,131	14,604	28,472	15,922	12,550	2,267	1,143	1,124
Percent	100%	100%	100%	100%	100%	100%	100%	100%	100%
Localized	76	77	75	76	77	75	75	75	74
Regional	16	16	16	16	16	16	15	15	16
Distant	2	2	2	2	2	2	3	3	3
Unstaged	6	5	7	6	5	7	7	7	7
5-Year Relative Survival (Percent), 2003-2009 ^c									
Age at Diagnosis:									
Ages <45	66.7	64.1	70.0	67.2	64.6	70.5	64.2	59.8	68.3
Ages 45-54	31.9	29.1	36.2	30.9	28.5	34.6	32.0	25.6	39.1
Ages 55-64	15.9	14.3	18.2	15.3	13.6	17.9	16.8	15.9	18.0
Ages 65-74	9.1	8.0	10.5	9.0	8.2	10.1	5.4	1.9	8.8
Ages 75+	4.8	4.9	4.7	4.3	4.7	4.0	11.7	7.5	14.3
Ages <65	45.1	41.9	49.4	44.1	41.1	48.3	48.0	43.1	53.1
Ages 65+	7.0	6.5	7.4	6.7	6.5	6.8	8.5	4.2	11.9
Stage ^e :									
All Stages	33.5	32.3	35.0	32.3	31.4	33.4	39.6	35.5	43.7
Localized	36.4	34.7	38.6	35.2	33.8	37.0	42.5	38.6	46.1
Regional	21.7	21.4	22.0	20.4	20.8	19.8	28.3	22.6	33.6
Distant	36.2	36.9	35.3	36.6	38.2	34.6	29.3 ^g	24.4 ^g	35.0 ^g
Unstaged	26.8	27.5	26.1	25.0	25.5	24.6	39.4	33.6 ^g	44.5 ^g

^a Based on End Results data from a series of hospital registries and one population-based registry.

^b SEER 9 areas (San Francisco, Connecticut, Detroit, Hawaii, Iowa, New Mexico, Seattle, Utah, Atlanta).

Based on follow-up of patients into 2010.

^c SEER 18 areas (San Francisco, Connecticut, Detroit, Hawaii, Iowa, New Mexico, Seattle, Utah, Atlanta, San Jose-Monterey, Los Angeles, Alaska Native Registry, Rural Georgia, California excluding SF/SJM/LA, Kentucky, Louisiana, New Jersey and Georgia excluding ATL/RG).

Based on follow-up of patients into 2010.

^d Period survival provides a 2009 estimate of survival by piecing together the most recent conditional survival estimates from several cohorts. It is computed here using three year calendar blocks (2007-2009: 0-1 year survival), (2006-2008: 1-2 year survival), (2005-2007: 2-3 year survival), (2004-2006: 3-4 year survival), (2003-2005: 4-5 years survival).

^e Stage at diagnosis is classified using SEER Summary Stage 2000.

^f The difference between 1975-1977 and 2003-2009 is statistically significant (p<.05).

^g The standard error is between 5 and 10 percentage points.

^h The standard error is greater than 10 percentage points.

- Statistic could not be calculated due to fewer than 25 cases during the time period.

Table 4.14
Cancer of the Female Breast (Invasive)

5-Year Relative and Period Survival (Percent) by Race, Diagnosis Year, Stage and Age

	All Races, Females			White Females			Black Females		
	All	<50	50+	All	<50	50+	All	<50	50+
5-Year Relative Survival (Percent)									
Year of Diagnosis:									
1960-1963 ^a	-	-	-	63	-	-	46	-	-
1970-1973 ^a	-	-	-	68	-	-	51	-	-
1975-1977 ^b	74.8	76.5	74.3	75.6	77.8	74.9	62.1	62.3	62.0
1978-1980 ^b	74.4	75.5	74.1	75.1	76.1	74.8	63.2	67.1	61.2
1981-1983 ^b	76.1	77.4	75.7	77.1	78.6	76.7	63.3	64.9	62.6
1984-1986 ^b	78.9	77.8	79.3	80.0	79.5	80.1	65.1	64.0	65.8
1987-1989 ^b	84.0	81.4	85.0	85.1	82.7	85.9	71.2	69.5	72.1
1990-1992 ^b	85.2	83.4	85.9	86.4	85.1	86.9	71.4	70.1	72.3
1993-1995 ^b	86.3	84.2	87.1	87.6	86.2	88.1	72.7	70.2	74.1
1996-1998 ^b	88.2	86.5	88.9	89.3	88.2	89.7	76.1	73.9	77.5
1999-2002 ^b	89.9	88.2	90.5	91.1	89.9	91.5	78.2	76.7	79.1
2003-2009 ^b	90.3 ^f	90.3 ^f	90.4 ^f	91.7 ^f	91.9 ^f	91.7 ^f	79.1 ^f	79.5 ^f	78.9 ^f
5-Year Period Survival (Percent) ^{cd}									
2009	89.5	89.5	89.5	90.6	90.7	90.6	79.7	80.1	79.5
Stage Distribution (%) 2003-2009 ^{ee}									
All Stages									
Number of cases	317,340	79,804	237,536	257,938	60,629	197,309	33,134	10,408	22,726
Percent	100%	100%	100%	100%	100%	100%	100%	100%	100%
Localized	61	54	63	62	55	64	52	47	54
Regional	32	40	30	32	40	29	38	44	35
Distant	5	4	6	5	4	5	8	7	9
Unstaged	2	1	2	2	1	2	2	1	2
5-Year Relative Survival (Percent), 2003-2009 ^c									
Age at Diagnosis:									
Ages <45	87.7	-	-	89.1	-	-	77.7	-	-
Ages 45-54	90.1	-	-	91.4	-	-	79.8	-	-
Ages 55-64	89.9	-	-	90.9	-	-	80.2	-	-
Ages 65-74	90.5	-	-	91.6	-	-	81.2	-	-
Ages 75+	87.1	-	-	88.6	-	-	71.6	-	-
Ages <65	89.5	-	-	90.7	-	-	79.3	-	-
Ages 65+	88.9	-	-	90.1	-	-	77.1	-	-
Stage ^e :									
All Stages	89.2	89.1	89.3	90.4	90.5	90.5	78.7	79.0	78.6
Localized	98.6	96.4	99.3	99.2	96.8	99.9	93.7	92.6	94.2
Regional	84.4	85.8	83.7	85.8	87.7	84.9	73.8	74.2	73.5
Distant	24.3	32.9	21.9	25.4	35.3	23.0	16.1	22.1	13.7
Unstaged	50.0	71.6	45.3	48.4	72.1	44.0	47.8	57.1	45.0
<i>In Situ</i> ^j	100.0	100.0	100.0	100.0	100.0	100.0	100.0	99.8	100.0

^a Based on End Results data from a series of hospital registries and one population-based registry.

^b SEER 9 areas (San Francisco, Connecticut, Detroit, Hawaii, Iowa, New Mexico, Seattle, Utah, Atlanta).
Based on follow-up of patients into 2010.

^c SEER 18 areas (San Francisco, Connecticut, Detroit, Hawaii, Iowa, New Mexico, Seattle, Utah, Atlanta, San Jose-Monterey, Los Angeles, Alaska Native Registry, Rural Georgia, California excluding SF/SJM/LA, Kentucky, Louisiana, New Jersey and Georgia excluding ATL/RG).

Based on follow-up of patients into 2010.

^d Period survival provides a 2009 estimate of survival by piecing together the most recent conditional survival estimates from several cohorts. It is computed here using three year calendar blocks (2007-2009: 0-1 year survival),

(2006-2008: 1-2 year survival), (2005-2007: 2-3 year survival), (2004-2006: 3-4 year survival), (2003-2005: 4-5 years survival).

^e Stage at diagnosis is classified using SEER Summary Stage 2000.

^f The difference between 1975-1977 and 2003-2009 is statistically significant ($p < .05$).

^g The standard error is between 5 and 10 percentage points.

^h The standard error is greater than 10 percentage points.

^j *In situ* cases are not included in the All Stages group.

- Statistic could not be calculated due to fewer than 25 cases during the time period.

Table 5.8
Cancer of the Cervix Uteri (Invasive)

5-Year Relative and Period Survival (Percent) by Race, Diagnosis Year, Stage and Age

	All Races, Females			White Females			Black Females		
	All	<50	50+	All	<50	50+	All	<50	50+
5-Year Relative Survival (Percent)									
Year of Diagnosis:									
1960-1963 ^a	-	-	-	58	-	-	47	-	-
1970-1973 ^a	-	-	-	64	-	-	61	-	-
1975-1977 ^b	69.1	82.5	57.8	69.7	83.8	58.1	64.4	75.6	54.8
1978-1980 ^b	67.4	78.4	57.7	68.1	79.8	58.2	60.8	70.4	51.8
1981-1983 ^b	66.8	79.5	54.5	67.7	80.7	54.9	59.2	73.6	46.2
1984-1986 ^b	67.1	77.8	55.3	68.8	79.5	56.3	57.6	68.0	47.7
1987-1989 ^b	70.1	79.6	58.1	72.5	82.6	58.5	57.1	62.7	52.3
1990-1992 ^b	69.5	79.0	56.8	70.8	81.2	56.4	57.9	63.5	50.8
1993-1995 ^b	72.5	81.7	59.7	74.1	83.4	60.1	62.9	71.0	53.3
1996-1998 ^b	72.6	81.0	60.3	73.6	82.6	59.2	64.9	68.0	60.9
1999-2002 ^b	71.7	83.0	55.9	72.8	85.1	54.8	65.0	73.4	54.9
2003-2009 ^b	69.4	79.6 ^f	56.0	70.5	81.3	55.6	62.7	70.2	54.5
5-Year Period Survival (Percent) ^{cd}									
2009	68.1	77.9	55.9	69.3	79.3	55.9	58.8	66.2	51.1
Stage Distribution (%) 2003-2009 ^{ee}									
All Stages									
Number of cases	22,392	12,439	9,953	16,910	9,650	7,260	3,158	1,608	1,550
Percent	100%	100%	100%	100%	100%	100%	100%	100%	100%
Localized	47	59	33	49	60	33	39	49	30
Regional	36	30	45	36	29	45	41	37	44
Distant	12	8	17	12	8	17	14	9	20
Unstaged	4	3	6	4	3	5	6	5	6
5-Year Relative Survival (Percent), 2003-2009 ^c									
Age at Diagnosis:									
Ages <45	79.5	-	-	80.9	-	-	69.8	-	-
Ages 45-54	67.4	-	-	68.3	-	-	58.8	-	-
Ages 55-64	59.4	-	-	59.5	-	-	52.4	-	-
Ages 65-74	55.6	-	-	55.5	-	-	48.9	-	-
Ages 75+	36.5	-	-	35.1	-	-	37.8	-	-
Ages <65	72.1	-	-	73.3	-	-	62.7	-	-
Ages 65+	47.5	-	-	47.0	-	-	43.8	-	-
Stage ^{ee} :									
All Stages	67.9	77.4	55.8	69.1	78.9	55.9	59.2	67.5	50.1
Localized	90.9	93.6	84.8	91.6	94.2	85.2	85.4	88.7	79.1
Regional	57.1	62.2	52.7	57.8	63.9	52.5	50.7	52.3	49.1
Distant	16.1	19.8	13.7	16.9	21.4	13.9	11.5	9.9	12.2
Unstaged	54.3	76.1	37.5	53.1	74.2	37.5	54.0	75.5 ^g	35.8 ^g

^a Based on End Results data from a series of hospital registries and one population-based registry.

^b SEER 9 areas (San Francisco, Connecticut, Detroit, Hawaii, Iowa, New Mexico, Seattle, Utah, Atlanta).
Based on follow-up of patients into 2010.

^c SEER 18 areas (San Francisco, Connecticut, Detroit, Hawaii, Iowa, New Mexico, Seattle, Utah, Atlanta, San Jose-Monterey, Los Angeles, Alaska Native Registry, Rural Georgia, California excluding SF/SJM/LA, Kentucky, Louisiana, New Jersey and Georgia excluding ATL/RG).
Based on follow-up of patients into 2010.

^d Period survival provides a 2009 estimate of survival by piecing together the most recent conditional survival estimates from several cohorts. It is computed here using three year calendar blocks (2007-2009: 0-1 year survival), (2006-2008: 1-2 year survival), (2005-2007: 2-3 year survival), (2004-2006: 3-4 year survival), (2003-2005: 4-5 years survival).

^e Stage at diagnosis is classified using SEER Summary Stage 2000.

^f The difference between 1975-1977 and 2003-2009 is statistically significant (p<.05).

^g The standard error is between 5 and 10 percentage points.

^h The standard error is greater than 10 percentage points.

- Statistic could not be calculated due to fewer than 25 cases during the time period.

Table 6.12
Cancer of the Colon and Rectum (Invasive)

5-Year Relative and Period Survival (Percent) by Race, Sex, Diagnosis Year, Stage and Age

	All Races			Whites			Blacks		
	Total	Males	Females	Total	Males	Females	Total	Males	Females
5-Year Relative Survival (Percent)									
Year of Diagnosis:									
1960-1963 ^a	-	-	-	-	-	-	-	-	-
1970-1973 ^a	-	-	-	-	-	-	-	-	-
1975-1977 ^b	49.8	48.9	50.6	50.0	49.3	50.7	44.6	43.2	45.8
1978-1980 ^b	51.2	50.2	52.2	51.6	50.6	52.5	45.4	43.2	46.9
1981-1983 ^b	54.0	53.8	54.2	54.4	54.4	54.4	46.5	42.9	49.5
1984-1986 ^b	57.6	57.7	57.6	58.4	58.5	58.2	48.2	47.2	48.9
1987-1989 ^b	59.6	59.6	59.3	60.0	60.5	59.5	52.2	49.8	54.4
1990-1992 ^b	61.2	61.0	61.3	61.9	61.7	62.1	52.7	54.3	51.3
1993-1995 ^b	59.9	59.7	60.1	60.5	60.3	60.7	51.7	51.1	52.2
1996-1998 ^b	62.4	62.4	62.5	63.1	62.9	63.2	53.8	54.8	53.0
1999-2002 ^b	65.5	66.0	64.9	66.7	67.1	66.3	55.1	56.1	54.2
2003-2009 ^b	66.1 ^f	66.5 ^f	65.7 ^f	67.0 ^f	67.9 ^f	66.1 ^f	57.3 ^f	55.2 ^f	59.0 ^f
5-Year Period Survival (Percent) ^{cd}									
2009	65.5	65.7	65.2	66.0	66.4	65.7	58.2	57.0	59.3
Stage Distribution (%) 2003-2009 ^{ee}									
All Stages									
Number of cases	213,951	109,325	104,626	170,129	87,720	82,409	24,979	11,806	13,173
Percent	100%	100%	100%	100%	100%	100%	100%	100%	100%
Localized	40	40	39	40	40	39	37	37	37
Regional	36	36	36	36	36	37	34	34	33
Distant	20	20	20	20	20	19	24	25	24
Unstaged	5	4	5	4	4	5	5	5	6
5-Year Relative Survival (Percent), 2003-2009 ^c									
Age at Diagnosis:									
Ages <45	67.1	65.6	68.7	68.7	66.6	71.1	58.7	56.6	60.9
Ages 45-54	70.4	69.2	71.8	71.2	70.1	72.5	62.6	59.8	65.4
Ages 55-64	68.5	67.9	69.3	69.1	68.5	70.0	61.6	60.7	62.4
Ages 65-74	67.3	66.8	67.8	67.8	67.5	68.1	60.2	58.2	61.9
Ages 75+	58.2	58.7	57.8	59.5	60.2	59.0	45.4	44.2	46.1
Ages <65	68.9	68.0	70.1	69.7	68.8	71.0	61.5	59.8	63.3
Ages 65+	62.0	62.7	61.3	62.8	63.7	62.0	53.0	52.6	53.3
Stage ^{ee} :									
All Stages	64.9	65.1	64.6	65.5	65.9	65.1	57.5	56.7	58.2
Localized	90.3	90.4	90.1	90.6	90.8	90.4	86.7	86.5	87.0
Regional	70.4	70.2	70.7	71.0	70.9	71.1	64.0	62.2	65.6
Distant	12.5	12.0	12.9	12.9	12.3	13.4	9.1	8.5	9.7
Unstaged	33.6	37.2	30.5	31.1	34.3	28.5	37.0	43.0	32.3

^a Based on End Results data from a series of hospital registries and one population-based registry.

^b SEER 9 areas (San Francisco, Connecticut, Detroit, Hawaii, Iowa, New Mexico, Seattle, Utah, Atlanta).

Based on follow-up of patients into 2010.

^c SEER 18 areas (San Francisco, Connecticut, Detroit, Hawaii, Iowa, New Mexico, Seattle, Utah, Atlanta, San Jose-Monterey, Los Angeles, Alaska Native Registry, Rural Georgia, California excluding SF/SJM/LA, Kentucky, Louisiana, New Jersey and Georgia excluding ATL/RG).

Based on follow-up of patients into 2010.

^d Period survival provides a 2009 estimate of survival by piecing together the most recent conditional survival estimates from several cohorts. It is computed here using three year calendar blocks (2007-2009: 0-1 year survival), (2006-2008: 1-2 year survival), (2005-2007: 2-3 year survival), (2004-2006: 3-4 year survival), (2003-2005: 4-5 years survival).

^e Stage at diagnosis is classified using SEER Summary Stage 2000.

^f The difference between 1975-1977 and 2003-2009 is statistically significant (p<.05).

^g The standard error is between 5 and 10 percentage points.

^h The standard error is greater than 10 percentage points.

- Statistic could not be calculated due to fewer than 25 cases during the time period.

Table 6.13
Cancer of the Colon (Invasive)

5-Year Relative and Period Survival (Percent) by Race, Sex, Diagnosis Year, Stage and Age

	All Races			Whites			Blacks		
	Total	Males	Females	Total	Males	Females	Total	Males	Females
5-Year Relative Survival (Percent)									
Year of Diagnosis:									
1960-1963 ^a	-	-	-	43	42	44	34	32	35
1970-1973 ^a	-	-	-	49	47	50	37	36	38
1975-1977 ^b	50.6	50.1	51.1	50.9	50.5	51.2	44.7	43.9	45.3
1978-1980 ^b	52.3	51.3	53.2	52.5	51.3	53.4	48.8	47.3	49.9
1981-1983 ^b	55.2	55.6	54.8	55.4	56.1	54.8	48.6	44.8	51.5
1984-1986 ^b	58.3	58.8	57.8	59.0	59.6	58.5	49.0	48.7	49.1
1987-1989 ^b	60.2	60.7	59.6	60.6	61.4	59.9	52.2	50.6	53.6
1990-1992 ^b	62.0	62.2	61.7	62.7	63.0	62.5	53.2	54.5	52.2
1993-1995 ^b	59.9	60.1	59.6	60.5	60.7	60.3	51.1	50.9	51.1
1996-1998 ^b	62.4	62.4	62.0	62.9	62.9	62.9	53.4	55.4	51.8
1999-2002 ^b	64.9	65.7	64.2	66.4	67.0	65.8	53.6	54.7	52.8
2003-2009 ^b	65.4 ^f	65.9 ^f	65.0 ^f	66.6 ^f	67.5 ^f	65.8 ^f	55.6 ^f	54.2 ^f	56.7 ^f
5-Year Period Survival (Percent) ^{cd}									
2009	64.8	65.2	64.3	65.6	66.1	65.2	57.0	56.5	57.3
Stage Distribution (%) 2003-2009 ^{ee}									
All Stages									
Number of cases	150,930	73,610	77,320	120,128	59,129	60,999	18,530	8,489	10,041
Percent	100%	100%	100%	100%	100%	100%	100%	100%	100%
Localized	38	38	37	38	39	37	34	35	34
Regional	37	37	38	37	37	38	36	36	36
Distant	21	21	21	20	20	20	26	26	26
Unstaged	4	4	5	4	4	5	4	4	5
5-Year Relative Survival (Percent), 2003-2009 ^c									
Age at Diagnosis:									
Ages <45	65.6	65.4	65.9	67.8	67.0	68.6	57.7	56.4	58.9
Ages 45-54	67.9	67.5	68.4	68.9	68.5	69.4	60.6	59.1	61.9
Ages 55-64	67.1	66.8	67.5	68.0	67.6	68.6	59.6	59.9	59.1
Ages 65-74	67.4	67.1	67.6	68.1	67.9	68.3	59.7	58.6	60.6
Ages 75+	59.5	60.0	59.1	60.9	61.6	60.5	46.3	44.6	47.2
Ages <65	67.2	66.8	67.6	68.3	67.8	68.9	59.7	59.2	60.1
Ages 65+	62.6	63.3	62.0	63.6	64.4	62.9	53.1	52.8	53.2
Stage ^e :									
All Stages	64.2	64.7	63.8	65.1	65.6	64.6	56.3	56.3	56.4
Localized	91.4	91.7	91.0	91.9	92.2	91.5	87.3	87.7	87.1
Regional	70.8	70.6	70.9	71.4	71.3	71.5	64.7	63.5	65.6
Distant	12.3	11.9	12.6	12.8	12.3	13.2	8.9	8.1	9.7
Unstaged	26.5	31.0	23.1	25.1	28.7	22.3	27.8	35.8	22.0

^a Based on End Results data from a series of hospital registries and one population-based registry.

^b SEER 9 areas (San Francisco, Connecticut, Detroit, Hawaii, Iowa, New Mexico, Seattle, Utah, Atlanta).
Based on follow-up of patients into 2010.

^c SEER 18 areas (San Francisco, Connecticut, Detroit, Hawaii, Iowa, New Mexico, Seattle, Utah, Atlanta, San Jose-Monterey, Los Angeles, Alaska Native Registry, Rural Georgia, California excluding SF/SJM/LA, Kentucky, Louisiana, New Jersey and Georgia excluding ATL/RG).
Based on follow-up of patients into 2010.

^d Period survival provides a 2009 estimate of survival by piecing together the most recent conditional survival estimates from several cohorts. It is computed here using three year calendar blocks (2007-2009: 0-1 year survival), (2006-2008: 1-2 year survival), (2005-2007: 2-3 year survival), (2004-2006: 3-4 year survival), (2003-2005: 4-5 years survival).

^e Stage at diagnosis is classified using SEER Summary Stage 2000.

^f The difference between 1975-1977 and 2003-2009 is statistically significant (p<.05).

^g The standard error is between 5 and 10 percentage points.

^h The standard error is greater than 10 percentage points.

- Statistic could not be calculated due to fewer than 25 cases during the time period.

Table 6.14
Cancer of the Rectum (Invasive)

5-Year Relative and Period Survival (Percent) by Race, Sex, Diagnosis Year, Stage and Age

	All Races			Whites			Blacks		
	Total	Males	Females	Total	Males	Females	Total	Males	Females
5-Year Relative Survival (Percent)									
Year of Diagnosis:									
1960-1963 ^a	-	-	-	38	36	41	27	28	27
1970-1973 ^a	-	-	-	45	43	48	30	20	40
1975-1977 ^b	48.1	46.9	49.5	48.2	47.3	49.4	44.4	41.4	46.8
1978-1980 ^b	48.8	48.3	49.4	49.7	49.3	50.1	34.6	33.5	35.5
1981-1983 ^b	51.4	50.2	52.8	52.0	50.9	53.2	39.9	37.7	42.2
1984-1986 ^b	56.2	55.5	57.1	56.9	56.4	57.6	45.7	43.1	48.2
1987-1989 ^b	58.1	57.9	58.4	58.6	58.8	58.3	52.3	47.7	56.9
1990-1992 ^b	59.2	58.5	60.2	59.9	59.1	61.0	51.0	53.5	48.2
1993-1995 ^b	60.1	59.0	61.6	60.6	59.4	62.0	53.8	51.6	56.3
1996-1998 ^b	63.3	62.4	64.3	63.6	62.9	64.5	54.9	53.2	56.4
1999-2002 ^b	66.9	66.8	67.1	67.6	67.3	67.9	60.0	60.4	59.2
2003-2009 ^b	67.7 ^f	67.7 ^f	67.8 ^f	68.1 ^f	68.8 ^f	67.2 ^f	61.7 ^f	57.4 ^f	66.1 ^f
5-Year Period Survival (Percent) ^{cd}									
2009	67.1	66.7	67.6	67.0	67.0	67.1	61.7	58.0	65.7
Stage Distribution (%) 2003-2009 ^{ee}									
All Stages									
Number of cases	63,021	35,715	27,306	50,001	28,591	21,410	6,449	3,317	3,132
Percent	100%	100%	100%	100%	100%	100%	100%	100%	100%
Localized	44	44	45	44	44	44	45	42	48
Regional	33	33	32	33	34	32	28	29	26
Distant	18	18	17	17	18	17	20	22	18
Unstaged	6	5	7	5	5	6	8	7	8
5-Year Relative Survival (Percent), 2003-2009 ^c									
Age at Diagnosis:									
Ages <45	69.3	65.9	73.3	70.0	65.9	74.9	60.6	56.8	64.8
Ages 45-54	74.1	71.6	77.7	74.5	72.4	77.7	66.7	61.0	73.1
Ages 55-64	71.1	69.7	73.4	71.1	70.0	73.0	67.3	63.0	72.5
Ages 65-74	67.0	66.1	68.3	67.1	66.8	67.6	61.7	57.0	66.6
Ages 75+	53.6	54.9	52.5	54.5	55.9	53.2	41.6	42.0	41.0
Ages <65	72.0	69.9	75.1	72.2	70.3	75.1	65.8	61.1	71.5
Ages 65+	60.2	61.2	59.1	60.6	61.9	59.0	52.9	51.8	53.8
Stage ^{ee} :									
All Stages	66.5	66.1	67.0	66.6	66.5	66.6	61.0	58.0	64.1
Localized	88.2	88.2	88.2	88.1	88.2	87.9	85.5	84.0	86.8
Regional	69.5	69.3	69.8	70.0	70.1	69.9	61.6	58.3	65.5
Distant	12.9	12.1	14.1	13.1	12.3	14.2	9.8	9.6	9.9
Unstaged	46.0	46.6	45.3	42.4	43.1	41.7	51.9	52.4	50.5

^a Based on End Results data from a series of hospital registries and one population-based registry.^b SEER 9 areas (San Francisco, Connecticut, Detroit, Hawaii, Iowa, New Mexico, Seattle, Utah, Atlanta).

Based on follow-up of patients into 2010.

^c SEER 18 areas (San Francisco, Connecticut, Detroit, Hawaii, Iowa, New Mexico, Seattle, Utah, Atlanta, San Jose-Monterey, Los Angeles, Alaska Native Registry, Rural Georgia, California excluding SF/SJM/LA, Kentucky, Louisiana, New Jersey and Georgia excluding ATL/RG).

Based on follow-up of patients into 2010.

^d Period survival provides a 2009 estimate of survival by piecing together the most recent conditional survival estimates from several cohorts. It is computed here using three year calendar blocks (2007-2009: 0-1 year survival), (2006-2008: 1-2 year survival), (2005-2007: 2-3 year survival), (2004-2006: 3-4 year survival), (2003-2005: 4-5 years survival).^e Stage at diagnosis is classified using SEER Summary Stage 2000.^f The difference between 1975-1977 and 2003-2009 is statistically significant (p<.05).^g The standard error is between 5 and 10 percentage points.^h The standard error is greater than 10 percentage points.

- Statistic could not be calculated due to fewer than 25 cases during the time period.

Table 7.8
Cancer of the Corpus and Uterus, NOS (Invasive)

5-Year Relative and Period Survival (Percent) by Race, Diagnosis Year, Stage and Age

	All Races, Females			White Females			Black Females		
	All	<50	50+	All	<50	50+	All	<50	50+
5-Year Relative Survival (Percent)									
Year of Diagnosis:									
1960-1963 ^a	-	-	-	73	-	-	31	-	-
1970-1973 ^a	-	-	-	81	-	-	44	-	-
1975-1977 ^b	86.9	92.7	86.2	88.0	93.3	87.4	60.2	84.4 ^g	55.6
1978-1980 ^b	82.5	91.7	81.3	83.7	93.0	82.6	54.9	82.3 ^g	49.5
1981-1983 ^b	80.7	91.3	79.4	82.1	92.3	81.0	50.6	82.7 ^g	45.5
1984-1986 ^b	82.4	93.6	81.0	83.9	93.9	82.8	56.2	83.5 ^g	52.6
1987-1989 ^b	82.3	89.9	81.2	83.9	90.9	83.0	57.0	84.5 ^g	53.1
1990-1992 ^b	83.6	90.0	82.6	85.7	92.3	84.8	53.8	72.5 ^g	50.0
1993-1995 ^b	83.1	90.0	81.9	84.8	91.5	83.8	58.5	81.7	53.9
1996-1998 ^b	83.5	90.1	82.3	85.1	91.2	84.2	61.3	82.5	56.8
1999-2002 ^b	83.9	88.6	83.0	85.9	90.3	85.2	61.4	73.4	58.2
2003-2009 ^b	83.5 ^f	89.3 ^f	82.4 ^f	85.5 ^f	90.9 ^f	84.7 ^f	63.7	76.1	60.9 ^f
5-Year Period Survival (Percent) ^{cd}									
2009	81.6	88.5	80.3	83.8	89.4	82.8	61.9	78.0	59.0
Stage Distribution (%) 2003-2009 ^{ee}									
All Stages									
Number of cases	63,764	9,988	53,776	52,495	7,679	44,816	5,883	872	5,011
Percent	100%	100%	100%	100%	100%	100%	100%	100%	100%
Localized	68	72	67	70	73	69	53	64	51
Regional	20	17	21	19	17	20	26	17	27
Distant	8	7	9	7	6	8	15	14	16
Unstaged	4	4	4	3	3	3	6	5	6
5-Year Relative Survival (Percent), 2003-2009 ^c									
Age at Diagnosis:									
Ages <45	89.5	-	-	90.2	-	-	81.0	-	-
Ages 45-54	88.3	-	-	90.0	-	-	70.5	-	-
Ages 55-64	84.9	-	-	87.2	-	-	64.8	-	-
Ages 65-74	77.3	-	-	80.5	-	-	54.3	-	-
Ages 75+	67.5	-	-	70.8	-	-	38.1	-	-
Ages <65	86.7	-	-	88.5	-	-	69.1	-	-
Ages 65+	73.2	-	-	76.3	-	-	48.8	-	-
Stage ^e :									
All Stages	81.5	89.0	80.1	83.7	90.1	82.6	60.6	77.9	57.3
Localized	95.3	96.5	95.1	96.1	96.7	96.0	85.4	92.4	83.8
Regional	67.5	82.3	65.1	70.4	83.9	68.3	44.9	68.0	42.0
Distant	16.9	28.2	15.2	18.2	29.1	16.7	10.2	20.8	8.5
Unstaged	47.8	87.6	40.6	48.3	87.2	41.8	34.4	81.2 ^g	26.2

^a Based on End Results data from a series of hospital registries and one population-based registry.

^b SEER 9 areas (San Francisco, Connecticut, Detroit, Hawaii, Iowa, New Mexico, Seattle, Utah, Atlanta).

Based on follow-up of patients into 2010.

^c SEER 18 areas (San Francisco, Connecticut, Detroit, Hawaii, Iowa, New Mexico, Seattle, Utah, Atlanta, San Jose-Monterey, Los Angeles, Alaska Native Registry, Rural Georgia, California excluding SF/SJM/LA, Kentucky, Louisiana, New Jersey and Georgia excluding ATL/RG).

Based on follow-up of patients into 2010.

^d Period survival provides a 2009 estimate of survival by piecing together the most recent conditional survival estimates from several cohorts. It is computed here using three year calendar blocks (2007-2009: 0-1 year survival), (2006-2008: 1-2 year survival), (2005-2007: 2-3 year survival), (2004-2006: 3-4 year survival), (2003-2005: 4-5 years survival).

^e Stage at diagnosis is classified using SEER Summary Stage 2000.

^f The difference between 1975-1977 and 2003-2009 is statistically significant (p<.05).

^g The standard error is between 5 and 10 percentage points.

^h The standard error is greater than 10 percentage points.

- Statistic could not be calculated due to fewer than 25 cases during the time period.

Table 8.8
Cancer of the Esophagus (Invasive)

5-Year Relative and Period Survival (Percent) by Race, Sex, Diagnosis Year, Stage and Age

	All Races			Whites			Blacks		
	Total	Males	Females	Total	Males	Females	Total	Males	Females
5-Year Relative Survival (Percent)									
Year of Diagnosis:									
1960-1963 ^a	-	-	-	4	4	6	1	0	2
1970-1973 ^a	-	-	-	4	4	4	4	4	3
1975-1977 ^b	5.0	4.0	7.5	5.5	4.8	7.0	3.5	2.0	7.7
1978-1980 ^b	5.0	4.8	5.6	5.3	5.3	5.2	4.3	3.4	6.8
1981-1983 ^b	6.6	6.0	8.2	7.3	6.5	9.0	4.3	3.7	6.5
1984-1986 ^b	9.5	8.4	12.1	10.2	9.0	12.9	8.7	8.2	9.9
1987-1989 ^b	9.4	9.4	9.5	10.5	11.0	9.2	6.6	5.3	10.2
1990-1992 ^b	12.2	11.7	13.4	12.9	12.3	14.9	9.1	9.4	8.4
1993-1995 ^b	12.1	12.2	11.6	13.3	13.6	12.7	7.5	7.8	6.8
1996-1998 ^b	13.4	13.0	14.4	14.2	14.0	14.7	10.2	8.5	13.6
1999-2002 ^b	17.8	17.5	18.9	18.7	18.6	19.1	11.7	9.9	15.5
2003-2009 ^b	19.3 ^f	19.4 ^f	18.8 ^f	20.4 ^f	20.6 ^f	19.6 ^f	13.8 ^f	12.6 ^f	15.6 ^f
5-Year Period Survival (Percent) ^{cd}									
2009	18.1	18.5	16.5	19.2	19.6	17.3	11.4	10.6	13.0
Stage Distribution (%) 2003-2009 ^{ee}									
All Stages									
Number of cases	20,488	15,910	4,578	16,975	13,428	3,547	2,409	1,662	747
Percent	100%	100%	100%	100%	100%	100%	100%	100%	100%
Localized	22	21	24	22	22	24	19	18	22
Regional	30	30	29	30	30	28	33	33	33
Distant	36	38	30	36	38	30	35	37	30
Unstaged	12	11	17	12	10	17	13	12	15
5-Year Relative Survival (Percent), 2003-2009 ^c									
Age at Diagnosis:									
Ages <45	20.3	21.4	15.4	21.0	21.7	16.4	14.9	16.4 ^g	-
Ages 45-54	19.6	18.6	24.4	21.5	20.1	29.7	9.8	8.2	14.0
Ages 55-64	19.4	19.2	20.4	20.6	20.4	21.7	12.8	11.9	15.6
Ages 65-74	19.0	18.7	20.4	19.9	19.6	21.0	12.6	10.3	17.6
Ages 75+	11.8	12.6	9.9	12.2	13.1	10.1	7.5	7.0	7.1
Ages <65	19.5	19.2	21.3	21.0	20.5	23.8	11.9	10.9	14.6
Ages 65+	15.4	15.9	14.0	16.0	16.6	14.2	10.6	9.3	12.8
Stage ^e :									
All Stages	17.3	17.5	16.5	18.2	18.5	17.2	11.3	10.3	13.7
Localized	38.6	40.7	32.0	41.3	43.5	34.0	19.5	18.1	21.9
Regional	20.6	21.1	18.7	21.4	21.8	19.7	15.0	15.6	14.3
Distant	3.5	3.2	4.6	3.5	3.3	4.3	3.1	2.1	6.9
Unstaged	11.2	11.0	11.5	11.0	11.3	10.4	10.5	9.1	13.7

^a Based on End Results data from a series of hospital registries and one population-based registry.

^b SEER 9 areas (San Francisco, Connecticut, Detroit, Hawaii, Iowa, New Mexico, Seattle, Utah, Atlanta).
Based on follow-up of patients into 2010.

^c SEER 18 areas (San Francisco, Connecticut, Detroit, Hawaii, Iowa, New Mexico, Seattle, Utah, Atlanta, San Jose-Monterey, Los Angeles, Alaska Native Registry, Rural Georgia, California excluding SF/SJM/LA, Kentucky, Louisiana, New Jersey and Georgia excluding ATL/RG).
Based on follow-up of patients into 2010.

^d Period survival provides a 2009 estimate of survival by piecing together the most recent conditional survival estimates from several cohorts. It is computed here using three year calendar blocks (2007-2009: 0-1 year survival), (2006-2008: 1-2 year survival), (2005-2007: 2-3 year survival), (2004-2006: 3-4 year survival), (2003-2005: 4-5 years survival).

^e Stage at diagnosis is classified using SEER Summary Stage 2000.

^f The difference between 1975-1977 and 2003-2009 is statistically significant (p<.05).

^g The standard error is between 5 and 10 percentage points.

^h The standard error is greater than 10 percentage points.

- Statistic could not be calculated due to fewer than 25 cases during the time period.

Table 9.8
Hodgkin Lymphoma

5-Year Relative and Period Survival (Percent) by Race, Sex, Diagnosis Year and Age

	All Races			Whites			Blacks		
	Total	Males	Females	Total	Males	Females	Total	Males	Females
5-Year Relative Survival (Percent)									
Year of Diagnosis:									
1960-1963 ^a	-	-	-	40	34	48	-	-	-
1970-1973 ^a	-	-	-	67	66	69	-	-	-
1975-1977 ^b	71.8	69.9	74.3	72.1	70.2	74.5	70.1	68.5 ^g	73.3 ^g
1978-1980 ^b	71.7	70.3	73.5	71.8	69.8	74.3	70.6	74.7 ^g	63.1 ^g
1981-1983 ^b	74.2	72.9	75.8	74.6	73.7	75.6	71.5	69.2 ^g	75.9 ^g
1984-1986 ^b	78.2	76.4	80.5	78.7	76.8	81.1	74.7	75.7 ^g	72.1 ^g
1987-1989 ^b	79.2	76.6	82.5	79.7	76.8	83.4	72.4	71.8 ^g	73.1 ^g
1990-1992 ^b	81.7	79.2	84.7	82.8	81.0	85.0	73.9	64.5	84.1
1993-1995 ^b	81.6	79.1	84.6	82.1	79.9	84.7	78.4	74.4	82.8
1996-1998 ^b	85.1	84.4	85.9	85.7	84.4	87.3	81.1	84.1	78.0
1999-2002 ^b	85.1	83.0	87.6	86.0	84.5	87.8	80.6	74.2	88.2
2003-2009 ^b	87.6 ^f	86.9 ^f	88.5 ^f	88.7 ^f	88.2 ^f	89.1 ^f	82.7 ^f	79.1 ^f	86.3
5-Year Period Survival (Percent) ^{cd}									
2009	85.7	85.0	86.6	86.4	85.8	87.0	80.1	78.2	82.2
Stage Distribution (%) 2003-2009 ^{ee}									
All Stages									
Number of cases	14,838	8,053	6,785	12,234	6,656	5,578	1,742	919	823
Percent	100%	100%	100%	100%	100%	100%	100%	100%	100%
Localized	17	18	16	17	18	16	20	20	19
Regional	40	36	46	41	37	47	33	28	39
Distant	38	42	33	37	41	32	44	50	39
Unstaged	5	4	5	5	5	5	3	3	4
5-Year Relative Survival (Percent), 2003-2009 ^c									
Age at Diagnosis:									
Ages <45	93.5	92.5	94.6	94.3	93.7	95.0	86.9	83.4	90.5
Ages 45-54	84.3	82.2	87.7	86.3	84.5	89.0	72.5	66.9	81.3
Ages 55-64	76.0	76.0	75.8	78.5	78.8	77.6	59.8 ^g	53.7 ^g	65.5 ^g
Ages 65-74	62.2	59.5	65.4	61.8	58.1	66.2	64.6 ^g	72.6 ^g	55.2 ^g
Ages 75+	41.6	42.6	40.4	42.4	42.3	42.1	32.2 ^h	-	24.2 ^h
Ages <65	90.3	88.9	92.0	91.4	90.4	92.6	82.3	77.8	87.2
Ages 65+	52.4	52.7	52.1	52.5	51.5	53.1	55.8 ^g	68.5 ^g	44.6 ^g
Stage ^e :									
All Stages	85.1	84.3	86.0	85.6	85.1	86.2	80.5	77.5	83.7
Localized	90.2	90.7	89.4	90.1	90.5	89.6	90.4	92.5	87.2
Regional	91.4	90.5	92.2	91.9	91.3	92.5	86.0	81.5	89.6
Distant	76.0	75.9	76.1	76.3	76.6	75.8	72.5	69.6	76.4
Unstaged	83.4	84.6	82.0	83.9	85.8	81.6	72.1 ^g	61.1 ^h	79.3 ^g

^a Based on End Results data from a series of hospital registries and one population-based registry.

^b SEER 9 areas (San Francisco, Connecticut, Detroit, Hawaii, Iowa, New Mexico, Seattle, Utah, Atlanta).
Based on follow-up of patients into 2010.

^c SEER 18 areas (San Francisco, Connecticut, Detroit, Hawaii, Iowa, New Mexico, Seattle, Utah, Atlanta, San Jose-Monterey, Los Angeles, Alaska Native Registry, Rural Georgia, California excluding SF/SJM/LA, Kentucky, Louisiana, New Jersey and Georgia excluding ATL/RG).
Based on follow-up of patients into 2010.

^d Period survival provides a 2009 estimate of survival by piecing together the most recent conditional survival estimates from several cohorts. It is computed here using three year calendar blocks (2007-2009: 0-1 year survival), (2006-2008: 1-2 year survival), (2005-2007: 2-3 year survival), (2004-2006: 3-4 year survival), (2003-2005: 4-5 years survival).

^e Stage at diagnosis is classified using SEER Summary Stage 2000.

^f The difference between 1975-1977 and 2003-2009 is statistically significant (p<.05).

^g The standard error is between 5 and 10 percentage points.

^h The standard error is greater than 10 percentage points.

- Statistic could not be calculated due to fewer than 25 cases during the time period.

Table 10.6
Kaposi Sarcoma

5-Year Relative and Period Survival (Percent) by Race, Sex, Diagnosis Year, Stage and Age

	All Races			Whites			Blacks		
	Total	Males	Females	Total	Males	Females	Total	Males	Females
5-Year Relative Survival (Percent)									
Year of Diagnosis:									
1960-1963 ^a	-	-	-	-	-	-	-	-	-
1970-1973 ^a	-	-	-	-	-	-	-	-	-
1975-1977 ^b	80.7 ^f	80.1 ^f	-	79.9 ^f	79.0 ^f	-	-	-	-
1978-1980 ^b	78.1 ^f	79.0 ^f	73.1 ^g	77.7 ^f	78.0 ^f	72.5 ^g	-	-	-
1981-1983 ^b	35.2	32.9	64.3 ^g	33.7	31.3	64.2 ^g	-	-	-
1984-1986 ^b	12.9	11.6	70.5 ^g	12.6	11.3	70.2 ^g	16.8	15.7	-
1987-1989 ^b	9.8	9.2	68.5 ^g	9.4	8.8	72.3 ^g	12.0	10.8	-
1990-1992 ^b	9.2	8.5	52.6 ^f	8.8	8.1	52.3 ^f	11.5	10.5	-
1993-1995 ^b	21.7	20.9	52.3 ^f	22.2	21.4	60.0 ^g	16.5	15.6	-
1996-1998 ^b	52.3	51.4	72.1 ^g	57.0	55.7	86.5 ^f	39.1	38.5	-
1999-2002 ^b	58.3	57.7	64.0 ^f	66.3	64.5	81.1 ^f	41.7	42.9	-
2003-2009 ^b	70.7 ^e	70.2 ^e	72.5 ^f	78.9	78.3	81.3 ^f	51.7	52.0	-
5-Year Period Survival (Percent) ^{cd}									
2009	72.9	72.1	81.0	78.8	77.4	88.2	55.3	54.6	-
5-Year Relative Survival (Percent), 2003-2009 ^c									
Age at Diagnosis:									
Ages <45	64.5	64.7	57.0 ^f	70.7	70.7	-	50.1	50.5	45.2 ^f
Ages 45-54	68.8	69.3	-	71.8	71.9	-	56.4 ^f	57.4 ^f	-
Ages 55-64	80.6	80.4	-	85.4	84.5	-	34.0 ^g	23.4 ^g	-
Ages 65-74	80.5	80.7 ^f	78.1 ^g	79.6	80.3 ^f	75.6 ^g	-	-	-
Ages 75+	88.1	90.7	81.7 ^f	88.2	90.6	82.6	-	-	-
Ages <65	67.1	67.3	62.0 ^f	72.9	72.7	78.5 ^f	50.6	50.8	48.1 ^f
Ages 65+	88.2	90.1	82.1 ^f	88.4	89.7	83.9	82.1 ^g	-	-

^a Based on End Results data from a series of hospital registries and one population-based registry.
^b SEER 9 areas (San Francisco, Connecticut, Detroit, Hawaii, Iowa, New Mexico, Seattle, Utah, Atlanta).
Based on follow-up of patients into 2010.
^c SEER 18 areas (San Francisco, Connecticut, Detroit, Hawaii, Iowa, New Mexico, Seattle, Utah, Atlanta, San Jose-Monterey, Los Angeles, Alaska Native Registry, Rural Georgia, California excluding SF/SJM/LA, Kentucky, Louisiana, New Jersey and Georgia excluding ATL/RG).
Based on follow-up of patients into 2010.
^d Period survival provides a 2009 estimate of survival by piecing together the most recent conditional survival estimates from several cohorts. It is computed here using three year calendar blocks (2007-2009: 0-1 year survival), (2006-2008: 1-2 year survival), (2005-2007: 2-3 year survival), (2004-2006: 3-4 year survival), (2003-2005: 4-5 years survival).
^e The difference between 1975-1977 and 2003-2009 is statistically significant (p<.05).
^f The standard error is between 5 and 10 percentage points.
^g The standard error is greater than 10 percentage points.
- Statistic could not be calculated due to fewer than 25 cases during the time period.

Table 11.8
Cancer of the Kidney and Renal Pelvis (Invasive)

5-Year Relative and Period Survival (Percent) by Race, Sex, Diagnosis Year, Stage and Age

	All Races			Whites			Blacks		
	Total	Males	Females	Total	Males	Females	Total	Males	Females
5-Year Relative Survival (Percent)									
Year of Diagnosis:									
1960-1963 ^a	-	-	-	37	36	39	38	38	37
1970-1973 ^a	-	-	-	46	44	50	44	40	49
1975-1977 ^b	50.1	50.2	49.9	49.8	50.1	49.4	48.8	47.9	50.4 ^g
1978-1980 ^b	52.9	52.7	53.3	52.6	52.8	52.1	56.8	51.9	62.8 ^g
1981-1983 ^b	50.1	51.0	48.4	50.0	51.2	47.8	50.6	50.2	51.2
1984-1986 ^b	54.6	55.0	53.8	54.7	55.4	53.6	52.5	49.0	57.7
1987-1989 ^b	56.6	57.1	56.0	57.2	58.0	55.9	54.5	52.7	56.7
1990-1992 ^b	60.1	60.4	59.6	60.6	61.1	59.8	56.9	55.2	58.8
1993-1995 ^b	61.4	61.6	61.0	61.9	62.8	60.5	57.4	54.1	62.0
1996-1998 ^b	62.6	63.0	61.9	62.1	62.7	61.0	66.9	68.1	64.6
1999-2002 ^b	65.6	64.4	67.6	65.9	64.9	67.5	63.2	59.7	67.6
2003-2009 ^b	73.3 ^f	72.9 ^f	73.8 ^f	73.3 ^f	73.1 ^f	73.6 ^f	71.9 ^f	71.3 ^f	72.6 ^f
5-Year Period Survival (Percent) ^{cd}									
2009	73.4	73.1	73.8	73.7	73.4	74.1	71.3	70.9	71.8
Stage Distribution (%) 2003-2009 ^{ee}									
All Stages									
Number of cases	65,908	40,564	25,344	54,733	33,792	20,941	7,003	4,185	2,818
Percent	100%	100%	100%	100%	100%	100%	100%	100%	100%
Localized	63	62	66	63	61	65	69	68	71
Regional	17	17	15	17	18	16	12	12	11
Distant	17	18	15	17	18	15	16	17	14
Unstaged	3	3	4	4	3	4	3	3	4
5-Year Relative Survival (Percent), 2003-2009 ^c									
Age at Diagnosis:									
Ages <45	85.7	84.2	87.8	87.3	85.6	89.8	74.5	73.8	75.3
Ages 45-54	78.6	76.5	82.8	79.1	76.9	83.3	74.9	72.8	79.2
Ages 55-64	73.2	71.6	76.3	73.5	71.8	76.9	70.8	70.1	72.0
Ages 65-74	70.3	70.2	70.4	70.5	70.1	71.1	68.8	70.1	67.2
Ages 75+	57.9	60.5	55.1	58.5	61.7	55.1	53.1	49.9	54.4
Ages <65	77.4	75.5	81.0	77.9	75.9	81.8	73.2	71.9	75.3
Ages 65+	64.5	66.1	62.4	64.8	66.4	62.6	63.0	64.4	61.5
Stage ^e :									
All Stages	71.8	71.7	72.1	72.1	71.9	72.3	69.6	69.6	69.6
Localized	91.7	91.9	91.3	92.2	92.4	91.9	87.5	88.5	86.2
Regional	64.2	66.6	60.1	64.9	67.0	61.2	57.1	61.2	50.3
Distant	12.3	12.5	12.0	12.3	12.7	11.6	10.2	9.1	12.3
Unstaged	33.5	34.8	31.9	33.1	34.6	31.2	30.4	27.4 ^g	32.8 ^g

^a Based on End Results data from a series of hospital registries and one population-based registry.

^b SEER 9 areas (San Francisco, Connecticut, Detroit, Hawaii, Iowa, New Mexico, Seattle, Utah, Atlanta).

Based on follow-up of patients into 2010.

^c SEER 18 areas (San Francisco, Connecticut, Detroit, Hawaii, Iowa, New Mexico, Seattle, Utah, Atlanta, San Jose-Monterey, Los Angeles, Alaska Native Registry, Rural Georgia, California excluding SF/SJM/LA, Kentucky, Louisiana, New Jersey and Georgia excluding ATL/RG).

Based on follow-up of patients into 2010.

^d Period survival provides a 2009 estimate of survival by piecing together the most recent conditional survival estimates from several cohorts. It is computed here using three year calendar blocks (2007-2009: 0-1 year survival), (2006-2008: 1-2 year survival), (2005-2007: 2-3 year survival), (2004-2006: 3-4 year survival), (2003-2005: 4-5 years survival).

^e Stage at diagnosis is classified using SEER Summary Stage 2000.

^f The difference between 1975-1977 and 2003-2009 is statistically significant (p<.05).

^g The standard error is between 5 and 10 percentage points.

^h The standard error is greater than 10 percentage points.

- Statistic could not be calculated due to fewer than 25 cases during the time period.

Table 12.8
Cancer of the Larynx (Invasive)

5-Year Relative and Period Survival (Percent) by Race, Sex, Diagnosis Year, Stage and Age

	All Races			Whites			Blacks		
	Total	Males	Females	Total	Males	Females	Total	Males	Females
5-Year Relative Survival (Percent)									
Year of Diagnosis:									
1960-1963 ^a	-	-	-	53	54	46	-	-	-
1970-1973 ^a	-	-	-	62	63	56	-	-	-
1975-1977 ^b	66.0	66.5	62.6	66.7	67.4	62.3	58.2	57.1	63.3 ^g
1978-1980 ^b	65.2	65.4	64.1	66.0	66.3	64.8	56.9	57.2	55.8 ^g
1981-1983 ^b	68.0	68.3	66.9	69.5	69.7	68.5	56.2	57.3	50.7 ^g
1984-1986 ^b	65.2	65.8	62.2	67.0	67.6	63.9	52.7	52.9	51.1 ^g
1987-1989 ^b	65.5	66.6	61.1	67.0	68.5	60.6	55.9	54.1	61.3 ^g
1990-1992 ^b	65.7	66.6	62.3	67.6	68.4	64.4	53.5	54.0	51.3 ^g
1993-1995 ^b	63.6	65.3	56.6	65.2	67.0	57.6	53.1	54.5	47.4 ^g
1996-1998 ^b	64.9	66.7	58.7	66.8	68.4	61.1	53.9	57.0	45.0 ^g
1999-2002 ^b	63.3	64.2	59.6	65.4	66.4	61.7	50.3	51.1	48.2 ^g
2003-2009 ^b	62.5 ^f	62.8 ^f	60.7	64.4	64.7	62.8	51.7	52.3	49.0
5-Year Period Survival (Percent) ^{cd}									
2009	61.3	62.3	57.2	62.0	63.1	57.4	56.2	56.7	54.0
Stage Distribution (%) 2003-2009 ^{ee}									
All Stages									
Number of cases	16,239	13,121	3,118	13,106	10,554	2,552	2,467	1,997	470
Percent	100%	100%	100%	100%	100%	100%	100%	100%	100%
Localized	56	58	49	58	60	52	46	48	38
Regional	20	19	28	20	18	27	23	22	31
Distant	18	18	18	17	17	16	26	27	25
Unstaged	5	5	5	5	5	5	4	4	6
5-Year Relative Survival (Percent), 2003-2009 ^c									
Age at Diagnosis:									
Ages <45	72.0	71.3	73.7	74.7	74.5	75.2	58.5 ^g	57.6 ^g	58.2 ^h
Ages 45-54	61.0	60.2	63.9	63.6	62.6	67.2	49.3	49.0	50.3 ^g
Ages 55-64	61.4	62.2	58.0	62.6	63.6	58.3	54.3	54.8	51.7
Ages 65-74	62.2	64.1	53.9	61.6	63.5	53.8	61.1	62.5	52.4 ^g
Ages 75+	53.2	54.8	46.9	53.8	55.6	46.7	48.1 ^g	47.1 ^g	45.9 ^g
Ages <65	62.1	62.2	62.0	63.9	64.0	63.6	52.8	53.1	51.9
Ages 65+	58.8	60.6	51.1	58.6	60.4	51.0	57.7	59.4	50.7 ^g
Stage ^e :									
All Stages	60.6	61.5	57.2	61.5	62.4	57.8	54.5	55.2	51.4
Localized	76.1	76.9	72.3	76.1	76.9	72.5	74.0	74.9	68.5
Regional	42.8	42.0	45.3	42.7	42.0	44.4	42.8	41.4	46.2 ^g
Distant	35.3	34.9	36.6	35.9	35.5	37.3	32.0	31.8	32.7
Unstaged	53.1	54.5	47.5	53.1	54.6	47.1 ^g	49.2 ^g	51.4 ^g	42.4 ^h

^a Based on End Results data from a series of hospital registries and one population-based registry.^b SEER 9 areas (San Francisco, Connecticut, Detroit, Hawaii, Iowa, New Mexico, Seattle, Utah, Atlanta).

Based on follow-up of patients into 2010.

^c SEER 18 areas (San Francisco, Connecticut, Detroit, Hawaii, Iowa, New Mexico, Seattle, Utah, Atlanta, San Jose-Monterey, Los Angeles, Alaska Native Registry, Rural Georgia, California excluding SF/SJM/LA, Kentucky, Louisiana, New Jersey and Georgia excluding ATL/RG).

Based on follow-up of patients into 2010.

^d Period survival provides a 2009 estimate of survival by piecing together the most recent conditional survival estimates from several cohorts. It is computed here using three year calendar blocks (2007-2009: 0-1 year survival), (2006-2008: 1-2 year survival), (2005-2007: 2-3 year survival), (2004-2006: 3-4 year survival), (2003-2005: 4-5 years survival).^e Stage at diagnosis is classified using SEER Summary Stage 2000.^f The difference between 1975-1977 and 2003-2009 is statistically significant (p<.05).^g The standard error is between 5 and 10 percentage points.^h The standard error is greater than 10 percentage points.

- Statistic could not be calculated due to fewer than 25 cases during the time period.

Table 13.14
Leukemia

5-Year Relative and Period Survival (Percent) by Race, Sex, Diagnosis Year and Age

	All Races			Whites			Blacks		
	Total	Males	Females	Total	Males	Females	Total	Males	Females
5-Year Relative Survival (Percent)									
Year of Diagnosis:									
1960-1963 ^a	-	-	-	14	-	-	-	-	-
1970-1973 ^a	-	-	-	22	-	-	-	-	-
1975-1977 ^b	34.1	33.0	35.5	34.6	33.6	35.8	33.1	30.0	36.5
1978-1980 ^b	36.0	35.0	37.3	36.7	35.8	37.9	28.2	27.3	29.3
1981-1983 ^b	37.3	37.0	37.7	38.1	37.8	38.4	33.9	33.4	34.3
1984-1986 ^b	40.5	40.1	41.0	41.6	41.3	42.0	32.7	31.5	34.1
1987-1989 ^b	42.8	44.0	41.3	43.9	45.5	41.7	35.0	32.7	37.8
1990-1992 ^b	45.0	44.4	45.8	46.2	46.1	46.5	35.7	30.5	41.3
1993-1995 ^b	47.2	48.1	46.0	48.3	49.2	47.1	40.9	41.0	40.6
1996-1998 ^b	47.9	48.2	47.5	49.3	49.2	49.3	38.0	38.9	36.9
1999-2002 ^b	51.8	52.4	51.1	52.7	53.2	52.0	44.6	46.6	42.5
2003-2009 ^b	59.2 ^e	60.0 ^e	58.1 ^e	60.0 ^e	60.6 ^e	59.1 ^e	53.2 ^e	55.7 ^e	50.2 ^e
5-Year Period Survival (Percent) ^{cd}									
2009	57.2	58.1	55.9	57.4	58.0	56.5	49.7	51.6	47.4
5-Year Relative Survival (Percent), 2003-2009 ^c									
Age at Diagnosis:									
Ages <45	71.6	71.1	72.4	72.6	72.2	73.1	62.9	61.3	65.0
Ages 45-54	65.2	66.8	62.7	66.2	67.7	63.8	56.9	57.7	55.5
Ages 55-64	62.7	62.7	62.8	63.5	63.3	63.9	51.4	51.1	51.8
Ages 65-74	52.9	52.2	53.9	54.2	53.1	55.9	40.1	40.6	39.4
Ages 75+	36.1	35.3	36.8	36.4	35.7	37.2	28.6	27.5	29.2
Ages <65	67.4	67.4	67.5	68.2	68.1	68.3	58.3	57.5	59.4
Ages 65+	43.1	43.1	43.1	43.7	43.6	43.9	34.1	34.7	33.4

^a Based on End Results data from a series of hospital registries and one population-based registry.

^b SEER 9 areas (San Francisco, Connecticut, Detroit, Hawaii, Iowa, New Mexico, Seattle, Utah, Atlanta).

Based on follow-up of patients into 2010.

^c SEER 18 areas (San Francisco, Connecticut, Detroit, Hawaii, Iowa, New Mexico, Seattle, Utah, Atlanta, San Jose-Monterey, Los Angeles, Alaska Native Registry, Rural Georgia, California excluding SF/SJM/LA, Kentucky, Louisiana, New Jersey and Georgia excluding ATL/RG).

Based on follow-up of patients into 2010.

^d Period survival provides a 2009 estimate of survival by piecing together the most recent conditional survival estimates from several cohorts. It is computed here using three year calendar blocks (2007-2009: 0-1 year survival), (2006-2008: 1-2 year survival), (2005-2007: 2-3 year survival), (2004-2006: 3-4 year survival), (2003-2005: 4-5 years survival).

^e The difference between 1975-1977 and 2003-2009 is statistically significant ($p < .05$).

^f The standard error is between 5 and 10 percentage points.

^g The standard error is greater than 10 percentage points.

- Statistic could not be calculated due to fewer than 25 cases during the time period.

Table 13.15
Lymphocytic Leukemia

5-Year Relative and Period Survival (Percent) by Race, Sex, Diagnosis Year and Age

	All Races			Whites			Blacks		
	Total	Males	Females	Total	Males	Females	Total	Males	Females
<u>Acute Lymphocytic Leukemia</u>									
5-Year Relative Survival (Percent)									
Year of Diagnosis:									
1975-1977 ^a	40.6	36.9	45.6	40.8	37.4	45.7	33.5 ^e	-	-
1978-1980 ^a	48.8	45.4	53.6	49.3	45.9	54.2	31.4 ^e	30.9 ^e	-
1981-1983 ^a	50.5	47.1	54.9	51.3	48.0	55.7	42.3 ^e	36.2 ^e	48.4 ^e
1984-1986 ^a	52.0	49.1	56.1	52.8	49.3	57.9	36.0 ^e	43.5 ^e	27.3 ^e
1987-1989 ^a	54.3	53.7	55.0	54.8	54.8	54.9	44.7 ^e	42.0 ^e	47.1 ^e
1990-1992 ^a	57.9	54.4	63.1	57.6	54.8	62.0	57.1 ^e	50.4 ^e	63.3 ^e
1993-1995 ^a	60.0	57.8	63.2	59.6	57.9	62.1	52.6 ^e	44.6 ^e	63.8 ^e
1996-1998 ^b	65.4	64.3	66.7	66.1	63.9	68.8	56.2 ^e	60.3 ^e	50.2 ^e
1999-2002 ^a	64.7	63.4	66.4	65.3	64.0	67.0	56.7 ^e	52.3 ^e	61.6 ^e
2003-2009 ^a	68.8 ^d	68.5 ^d	69.3 ^d	69.7 ^d	69.3 ^d	70.1 ^d	63.9 ^d	64.2	63.5 ^e
5-Year Period Survival (Percent) ^{bc}									
2009	67.3	67.1	67.5	67.4	66.9	67.9	62.2	64.3	59.0
5-Year Relative Survival (Percent), 2003-2009 ^b									
Age at Diagnosis:									
Ages <45	76.9	75.2	79.3	77.2	75.7	79.3	73.5	70.8	78.0
Ages 45-54	31.8	34.5	28.0	29.7	32.0	26.6	31.2 ^e	-	-
Ages 55-64	23.4	21.7	24.9	23.7	21.7	25.3	18.1 ^e	-	-
Ages 65-74	14.4	13.3	15.0	15.2	13.2	16.0	0.0	-	-
Ages 75+	8.2	11.9	5.0	7.2	9.9	5.1	0.0	-	-
Ages <65	70.6	69.6	72.1	70.6	69.7	71.9	68.2	66.4	71.1
Ages 65+	11.8	12.8	10.7	11.8	11.8	11.2	0.0	-	0.0
<u>Chronic Lymphocytic Leukemia</u>									
5-Year Relative Survival (Percent)									
Year of Diagnosis:									
1975-1977 ^a	67.1	64.8	70.2	67.9	65.5	71.1	56.4 ^e	55.1 ^e	58.1 ^e
1978-1980 ^a	67.7	64.7	71.7	68.4	65.3	72.6	56.8 ^e	56.7 ^e	56.9 ^e
1981-1983 ^a	65.7	65.0	66.6	66.2	65.8	66.8	57.3 ^e	55.0 ^e	60.4 ^e
1984-1986 ^a	72.3	71.0	74.0	72.6	71.3	74.3	67.0 ^e	64.4 ^e	68.4 ^e
1987-1989 ^a	72.7	72.6	72.8	73.8	73.9	73.6	58.1	55.5 ^e	61.5 ^e
1990-1992 ^a	73.8	71.5	76.9	75.0	72.9	77.8	52.2	43.4 ^e	60.9 ^e
1993-1995 ^a	76.8	76.7	76.9	77.9	77.7	78.1	62.6	62.9 ^e	78.1 ^e
1996-1998 ^b	75.0	73.5	77.1	76.0	74.6	77.9	57.9 ^e	52.3 ^e	64.7 ^e
1999-2002 ^b	78.9	78.2	79.8	79.5	78.7	80.6	66.4	64.6 ^e	68.0 ^e
2003-2009 ^a	83.1 ^d	82.4 ^d	84.0 ^d	83.2 ^d	82.4 ^d	84.2 ^d	78.0 ^d	77.6 ^d	78.2
5-Year Period Survival (Percent) ^{bc}									
2009	80.5	80.1	80.9	80.4	80.0	80.9	67.9	67.2	68.8
5-Year Relative Survival (Percent), 2003-2009 ^b									
Age at Diagnosis:									
Ages <45	90.9	87.5	96.6	91.1	88.2	96.3	78.8 ^e	-	-
Ages 45-54	91.6	92.1	90.5	92.2	92.4	91.7	80.2	83.9	72.4 ^e
Ages 55-64	87.7	85.7	91.6	88.4	86.5	91.9	73.4	68.9	83.1 ^e
Ages 65-74	82.6	80.2	86.2	83.4	80.6	87.8	66.0	65.8	66.3 ^e
Ages 75+	66.0	63.9	68.2	65.8	63.9	67.7	54.8	46.2 ^e	61.8 ^e
Ages <65	89.1	87.8	91.7	89.7	88.4	92.2	76.1	74.0	80.3
Ages 65+	73.4	71.8	75.2	73.5	71.9	75.4	60.6	57.3	63.8

^a SEER 9 areas (San Francisco, Connecticut, Detroit, Hawaii, Iowa, New Mexico, Seattle, Utah, Atlanta).

Based on follow-up of patients into 2010.

^b SEER 18 areas (San Francisco, Connecticut, Detroit, Hawaii, Iowa, New Mexico, Seattle, Utah, Atlanta, San Jose-Monterey, Los Angeles, Alaska Native Registry, Rural Georgia, California excluding SF/SJM/LA, Kentucky, Louisiana, New Jersey and Georgia excluding ATL/RG).

Based on follow-up of patients into 2010.

^c Period survival provides a 2009 estimate of survival by piecing together the most recent conditional survival estimates from several cohorts. It is computed here using three year calendar blocks (2007-2009: 0-1 year survival),

(2006-2008: 1-2 year survival), (2005-2007: 2-3 year survival), (2004-2006: 3-4 year survival), (2003-2005: 4-5 years survival).

^d The difference between 1975-1977 and 2003-2009 is statistically significant (p<.05).

^e The standard error is between 5 and 10 percentage points.

^f The standard error is greater than 10 percentage points.

- Statistic could not be calculated due to fewer than 25 cases during the time period.

Table 13.16
Myeloid Leukemia

5-Year Relative and Period Survival (Percent) by Race, Sex, Diagnosis Year and Age

	All Races			Whites			Blacks		
	Total	Males	Females	Total	Males	Females	Total	Males	Females
<u>Acute Myeloid Leukemia</u>									
5-Year Relative Survival (Percent)									
Year of Diagnosis:									
1975-1977 ^a	6.2	5.5	7.0	5.8	5.4	6.2	10.1	8.2	11.7
1978-1980 ^a	7.6	6.9	8.4	7.1	6.1	8.3	8.8	5.1	12.6
1981-1983 ^a	8.4	7.2	9.8	7.7	6.4	9.3	12.1	15.3 ^e	9.0
1984-1986 ^a	10.6	9.2	12.3	10.2	8.9	11.8	9.8	6.7	12.9
1987-1989 ^a	11.4	9.1	14.1	11.3	9.6	13.2	9.2	4.4	15.7 ^e
1990-1992 ^a	13.7	12.5	15.1	13.4	12.2	14.8	13.5	12.9	13.9
1993-1995 ^a	16.2	14.9	17.5	15.4	14.2	16.8	21.5	20.6 ^e	22.0
1996-1998 ^b	16.9	15.9	18.1	15.6	14.3	17.1	21.9	25.2	18.0
1999-2002 ^a	19.9	18.9	21.2	19.6	17.9	21.6	20.0	24.8	15.5
2003-2009 ^a	24.9 ^d	23.0 ^d	26.9 ^d	24.3 ^d	22.4 ^d	26.2 ^d	25.0 ^d	24.2 ^d	25.7 ^d
5-Year Period Survival (Percent) ^{bc}									
2009	25.7	24.2	27.3	24.9	23.4	26.7	25.6	24.9	26.1
5-Year Relative Survival (Percent), 2003-2009 ^b									
Age at Diagnosis:									
Ages <45	54.9	52.9	56.9	55.4	53.7	57.2	47.9	45.4	50.6
Ages 45-54	38.2	35.5	41.4	39.8	37.4	42.6	31.3	25.6 ^e	35.8 ^e
Ages 55-64	25.1	22.6	28.3	24.9	22.7	28.0	20.5	17.7	23.6
Ages 65-74	10.8	8.9	13.3	11.0	9.0	13.7	9.5	7.0	11.8
Ages 75+	1.8	1.5	2.2	1.9	1.6	2.2	0.6	0.0	0.9
Ages <65	41.6	38.8	45.1	41.6	38.9	45.0	37.4	34.3	40.7
Ages 65+	5.4	4.8	6.2	5.5	4.8	6.3	4.7	4.1	4.9
<u>Chronic Myeloid Leukemia</u>									
5-Year Relative Survival (Percent)									
Year of Diagnosis:									
1975-1977 ^a	21.7	19.3	25.0	20.5	18.4	23.3	27.7 ^e	21.6 ^e	35.5 ^e
1978-1980 ^a	23.4	23.0	23.8	23.6	23.7	23.5	21.4 ^e	20.6 ^e	22.7 ^e
1981-1983 ^a	28.2	24.5	32.5	28.3	25.1	32.0	29.7	20.8 ^e	40.1 ^e
1984-1986 ^a	22.4	20.2	25.5	22.9	20.2	26.7	21.4	20.3 ^e	22.2 ^e
1987-1989 ^a	30.4	30.7	30.0	30.4	31.3	29.4	33.3 ^e	28.1 ^e	41.3 ^e
1990-1992 ^a	30.6	29.5	31.9	30.1	29.9	30.4	34.9 ^e	25.5 ^e	44.9 ^e
1993-1995 ^a	35.3	35.0	35.5	35.0	34.9	35.0	35.3 ^e	33.2 ^e	38.5 ^e
1996-1998 ^b	36.9	37.7	35.7	37.9	37.7	38.1	28.3	27.6 ^e	28.9 ^e
1999-2002 ^a	47.6	46.1	49.6	45.8	44.1	48.0	52.1	54.8 ^e	48.5 ^e
2003-2009 ^a	58.6 ^d	57.4 ^d	60.4 ^d	57.4 ^d	56.1 ^d	59.5 ^d	59.3 ^d	61.0 ^{de}	56.6 ^e
5-Year Period Survival (Percent) ^{bc}									
2009	62.7	61.8	63.9	61.1	60.2	62.4	64.8	62.3	67.2
5-Year Relative Survival (Percent), 2003-2009 ^b									
Age at Diagnosis:									
Ages <45	85.8	85.2	86.9	87.4	86.0	89.4	74.6	76.5	71.9
Ages 45-54	80.5	78.3	83.5	80.2	79.3	81.5	77.5	70.9 ^e	84.3 ^e
Ages 55-64	68.0	66.7	70.1	68.1	66.8	70.6	62.6	63.2 ^e	61.0 ^e
Ages 65-74	49.4	45.5	55.8	49.0	45.4	54.8	39.4 ^e	31.6 ^e	53.1 ^f
Ages 75+	28.8	26.8	31.0	28.8	26.7	31.1	31.4 ^e	24.2 ^e	37.0 ^f
Ages <65	79.1	77.7	81.2	79.4	78.0	81.7	71.9	71.7	72.2
Ages 65+	37.4	35.4	39.9	37.0	35.1	39.3	35.1 ^e	27.4 ^e	43.9 ^e

^a SEER 9 areas (San Francisco, Connecticut, Detroit, Hawaii, Iowa, New Mexico, Seattle, Utah, Atlanta).
Based on follow-up of patients into 2010.

^b SEER 18 areas (San Francisco, Connecticut, Detroit, Hawaii, Iowa, New Mexico, Seattle, Utah, Atlanta, San Jose-Monterey, Los Angeles, Alaska Native Registry, Rural Georgia, California excluding SF/SJM/LA, Kentucky, Louisiana, New Jersey and Georgia excluding ATL/RG).
Based on follow-up of patients into 2010.

^c Period survival provides a 2009 estimate of survival by piecing together the most recent conditional survival estimates from several cohorts. It is computed here using three year calendar blocks (2007-2009: 0-1 year survival), (2006-2008: 1-2 year survival), (2005-2007: 2-3 year survival), (2004-2006: 3-4 year survival), (2003-2005: 4-5 years survival).
The difference between 1975-1977 and 2003-2009 is statistically significant (p<.05).

^d The standard error is between 5 and 10 percentage points.

^e The standard error is greater than 10 percentage points.

^f -
Statistic could not be calculated due to fewer than 25 cases during the time period.

Table 14.8
Cancer of the Liver and Intrahepatic Bile Duct (Invasive)

5-Year Relative and Period Survival (Percent) by Race, Sex, Diagnosis Year, Stage and Age

	All Races			Whites			Blacks		
	Total	Males	Females	Total	Males	Females	Total	Males	Females
5-Year Relative Survival (Percent)									
Year of Diagnosis:									
1960-1963 ^a	-	-	-	-	-	-	-	-	-
1970-1973 ^a	-	-	-	-	-	-	-	-	-
1975-1977 ^b	3.4	1.8	6.3	3.4	1.9	5.8	1.8	0.0	5.6
1978-1980 ^b	3.3	2.2	5.4	3.3	2.2	4.8	3.6	3.0	5.0
1981-1983 ^b	3.6	2.9	5.0	3.8	3.0	5.2	2.8	2.1	4.7
1984-1986 ^b	5.7	3.7	9.5	5.7	3.7	9.1	4.3	2.1	9.1
1987-1989 ^b	4.8	3.2	7.9	5.6	3.4	9.2	2.7	1.6	4.9
1990-1992 ^b	5.6	4.9	7.0	6.3	5.2	8.3	2.6	2.0	3.5
1993-1995 ^b	5.5	5.3	6.0	5.2	5.0	5.6	4.0	2.8	7.3
1996-1998 ^b	8.5	8.2	9.2	8.4	7.5	10.2	4.7	5.9	2.1
1999-2002 ^b	11.9	11.6	12.4	10.9	10.6	11.5	8.8	8.4	9.6
2003-2009 ^b	17.5 ^f	17.6 ^f	17.2 ^f	16.8 ^f	17.2 ^f	15.6 ^f	12.2 ^f	10.2	16.7 ^f
5-Year Period Survival (Percent) ^{cd}									
2009	17.4	17.3	17.7	16.7	16.6	16.7	12.6	10.7	16.4
Stage Distribution (%) 2003-2009 ^{ee}									
All Stages									
Number of cases	35,626	25,752	9,874	24,472	17,769	6,703	4,352	3,194	1,158
Percent	100%	100%	100%	100%	100%	100%	100%	100%	100%
Localized	41	41	42	41	41	40	40	40	41
Regional	27	28	24	26	27	24	28	28	27
Distant	18	19	17	18	18	18	21	22	19
Unstaged	14	13	17	15	14	18	11	10	13
5-Year Relative Survival (Percent), 2003-2009 ^c									
Age at Diagnosis:									
Ages <45	33.8	31.2	39.9	37.8	34.9	43.5	22.5	19.4	28.4 ^g
Ages 45-54	19.4	18.4	24.6	19.3	18.6	23.0	13.1	10.8	22.4
Ages 55-64	18.4	16.9	24.3	18.8	17.2	25.2	10.0	8.2	16.5
Ages 65-74	14.0	13.3	15.3	12.1	11.4	13.6	9.5	5.6	14.4
Ages 75+	6.0	6.8	5.1	4.8	5.3	4.1	4.6	4.3	4.4
Ages <65	20.4	18.8	26.8	20.7	19.1	27.3	12.6	10.3	20.4
Ages 65+	10.2	10.6	9.6	8.4	8.7	7.8	7.7	5.2	9.9
Stage ^e :									
All Stages	16.1	15.9	16.7	15.4	15.3	15.7	11.3	9.3	16.0
Localized	29.1	29.2	28.9	27.9	28.2	27.2	21.4	18.5	28.2
Regional	10.2	9.8	11.5	10.2	9.5	12.2	5.8	4.8	8.5
Distant	3.0	2.3	4.8	3.1	2.4	4.9	2.1	1.3	4.9
Unstaged	6.0	5.8	6.3	5.4	5.4	5.6	5.4	3.4	8.4

^a Based on End Results data from a series of hospital registries and one population-based registry.

^b SEER 9 areas (San Francisco, Connecticut, Detroit, Hawaii, Iowa, New Mexico, Seattle, Utah, Atlanta).

Based on follow-up of patients into 2010.

^c SEER 18 areas (San Francisco, Connecticut, Detroit, Hawaii, Iowa, New Mexico, Seattle, Utah, Atlanta, San Jose-Monterey, Los Angeles, Alaska Native Registry, Rural Georgia, California excluding SF/SJM/LA, Kentucky, Louisiana, New Jersey and Georgia excluding ATL/RG).

Based on follow-up of patients into 2010.

^d Period survival provides a 2009 estimate of survival by piecing together the most recent conditional survival estimates from several cohorts. It is computed here using three year calendar blocks (2007-2009: 0-1 year survival), (2006-2008: 1-2 year survival), (2005-2007: 2-3 year survival), (2004-2006: 3-4 year survival), (2003-2005: 4-5 years survival).

^e Stage at diagnosis is classified using SEER Summary Stage 2000.

^f The difference between 1975-1977 and 2003-2009 is statistically significant (p<.05).

^g The standard error is between 5 and 10 percentage points.

^h The standard error is greater than 10 percentage points.

- Statistic could not be calculated due to fewer than 25 cases during the time period.

Table 15.12
Cancer of the Lung and Bronchus (Invasive)

5-Year Relative and Period Survival (Percent) by Race, Sex, Diagnosis Year, Stage and Age

	All Races			Whites			Blacks		
	Total	Males	Females	Total	Males	Females	Total	Males	Females
5-Year Relative Survival (Percent)									
Year of Diagnosis:									
1960-1963 ^a	-	-	-	8	7	11	5	5	6
1970-1973 ^a	-	-	-	10	9	14	7	6	10
1975-1977 ^b	12.2	11.1	15.3	12.2	11.1	15.4	11.3	10.6	13.7
1978-1980 ^b	12.8	11.4	16.3	12.9	11.5	16.2	11.7	9.7	17.7
1981-1983 ^b	13.1	11.5	16.4	13.3	11.7	16.5	11.4	10.2	14.9
1984-1986 ^b	12.8	11.2	16.0	13.0	11.3	16.3	11.1	10.3	12.8
1987-1989 ^b	13.0	11.9	14.9	13.3	12.0	15.3	10.9	10.8	11.1
1990-1992 ^b	13.6	12.1	15.9	13.9	12.4	16.2	10.4	9.3	12.5
1993-1995 ^b	14.3	12.5	16.8	14.5	12.6	17.1	12.8	11.3	15.6
1996-1998 ^b	14.6	12.9	16.8	14.8	13.0	17.0	12.3	10.7	14.8
1999-2002 ^b	15.3	13.2	17.9	15.6	13.5	18.2	12.4	10.8	14.7
2003-2009 ^b	17.5 ^f	15.4 ^f	20.0 ^f	18.0 ^f	15.7 ^f	20.4 ^f	14.2 ^f	13.0 ^f	15.6
5-Year Period Survival (Percent) ^{cd}									
2009	17.3	15.0	19.9	17.6	15.3	20.1	14.3	12.2	16.9
Stage Distribution (%) 2003-2009 ^{ee}									
All Stages									
Number of cases	269,536	144,187	125,349	222,942	117,573	105,369	29,806	16,925	12,881
Percent	100%	100%	100%	100%	100%	100%	100%	100%	100%
Localized	15	14	17	16	14	17	12	11	14
Regional	22	22	22	22	22	22	22	22	22
Distant	57	58	55	56	58	54	61	62	59
Unstaged	6	6	6	6	6	7	5	5	5
5-Year Relative Survival (Percent), 2003-2009 ^c									
Age at Diagnosis:									
Ages <45	27.4	23.7	31.2	29.1	24.7	33.4	22.4	20.8	24.1
Ages 45-54	19.4	15.6	23.8	20.3	16.3	25.0	14.7	12.5	17.5
Ages 55-64	18.8	16.0	22.6	19.3	16.4	23.1	14.9	13.0	18.0
Ages 65-74	17.6	15.0	20.6	17.8	15.3	20.9	14.0	12.6	15.8
Ages 75+	12.2	10.7	13.6	12.5	11.0	13.9	8.4	7.1	9.6
Ages <65	19.5	16.3	23.6	20.2	16.8	24.3	15.3	13.3	18.3
Ages 65+	14.9	13.0	16.9	15.1	13.2	17.2	11.6	10.5	12.9
Stage ^g :									
All Stages	16.6	14.3	19.2	16.9	14.5	19.5	13.5	12.0	15.4
Localized	53.5	48.2	58.5	54.2	48.8	59.2	44.9	41.2	48.8
Regional	26.1	23.7	28.8	26.1	23.9	28.7	23.5	21.7	25.9
Distant	3.9	3.3	4.6	3.8	3.1	4.5	3.7	3.3	4.2
Unstaged	7.8	7.2	8.4	7.3	6.5	8.0	10.9	10.8	11.1

^a Based on End Results data from a series of hospital registries and one population-based registry.

^b SEER 9 areas (San Francisco, Connecticut, Detroit, Hawaii, Iowa, New Mexico, Seattle, Utah, Atlanta).
Based on follow-up of patients into 2010.

^c SEER 18 areas (San Francisco, Connecticut, Detroit, Hawaii, Iowa, New Mexico, Seattle, Utah, Atlanta, San Jose-Monterey, Los Angeles, Alaska Native Registry, Rural Georgia, California excluding SF/SJM/LA, Kentucky, Louisiana, New Jersey and Georgia excluding ATL/RG).
Based on follow-up of patients into 2010.

^d Period survival provides a 2009 estimate of survival by piecing together the most recent conditional survival estimates from several cohorts. It is computed here using three year calendar blocks (2007-2009: 0-1 year survival), (2006-2008: 1-2 year survival), (2005-2007: 2-3 year survival), (2004-2006: 3-4 year survival), (2003-2005: 4-5 years survival).

^e Stage at diagnosis is classified using SEER Summary Stage 2000.

^f The difference between 1975-1977 and 2003-2009 is statistically significant (p<.05).

^g The standard error is between 5 and 10 percentage points.

^h The standard error is greater than 10 percentage points.

- Statistic could not be calculated due to fewer than 25 cases during the time period.

Table 15.13
Small Cell Cancer of the Lung and Bronchus (Invasive)

5-Year Relative and Period Survival (Percent) by Race, Sex, Diagnosis Year, Stage and Age

	All Races			Whites			Blacks		
	Total	Males	Females	Total	Males	Females	Total	Males	Females
5-Year Relative Survival (Percent)									
Year of Diagnosis:									
1975-1977 ^a	3.6	3.1	4.8	3.7	3.1	4.9	3.7	3.8	3.6
1978-1980 ^a	4.2	3.1	6.5	4.3	3.3	6.5	3.1	2.4	5.0
1981-1983 ^a	4.5	3.6	6.2	4.6	3.6	6.1	5.4	4.1	8.4
1984-1986 ^a	4.5	3.5	6.2	4.7	3.6	6.4	3.6	2.2	5.6
1987-1989 ^a	5.0	3.9	6.6	5.1	3.9	6.8	4.0	3.3	5.1
1990-1992 ^a	5.4	4.5	6.4	5.5	4.5	6.6	3.9	3.9	3.9
1993-1995 ^a	6.4	5.2	7.8	6.3	5.1	7.7	6.8	4.5	9.9
1996-1998 ^b	5.9	5.2	6.5	6.1	5.4	6.7	3.6	2.7	4.5
1999-2002 ^a	6.1	4.9	7.4	6.0	4.5	7.6	4.9	5.2	4.6
2003-2009 ^a	6.5 ^e	4.8 ^e	8.2 ^e	6.5 ^e	4.7 ^e	8.2 ^e	6.2 ^e	5.2 ^e	7.4
5-Year Period Survival (Percent) ^{bc}									
2009	6.5	5.1	7.8	6.4	5.0	7.7	6.8	5.6	8.1
Stage Distribution (%) 2003-2009 ^{bd}									
All Stages									
Number of cases	36,162	18,299	17,863	31,621	15,789	15,832	3,089	1,582	1,507
Percent	100%	100%	100%	100%	100%	100%	100%	100%	100%
Localized	5	5	5	5	5	5	5	5	5
Regional	21	19	22	21	19	22	21	18	23
Distant	72	73	70	71	73	70	72	74	69
Unstaged	3	3	3	3	3	3	3	3	2
5-Year Relative Survival (Percent), 2003-2009 ^b									
Age at Diagnosis:									
Ages <45	10.3	9.7	10.8	9.2	9.0	9.5	16.1	16.0 ^f	16.1 ^f
Ages 45-54	9.2	7.3	11.2	8.9	6.8	11.2	8.0	6.8	9.3
Ages 55-64	7.8	5.5	10.5	7.8	5.4	10.5	8.1	6.4	10.2
Ages 65-74	5.9	5.1	6.7	6.0	4.9	6.9	5.0	5.1	4.7
Ages 75+	3.5	2.9	4.1	3.4	2.9	3.9	5.0	3.8	5.6
Ages <65	8.3	6.2	10.7	8.2	5.9	10.7	8.5	7.0	10.4
Ages 65+	4.9	4.2	5.6	4.9	4.1	5.6	5.0	4.6	5.2
Stage ^d :									
All Stages	6.3	5.0	7.7	6.2	4.9	7.6	6.8	6.0	7.6
Localized	23.3	20.5	26.1	23.7	20.6	26.6	20.5	21.2 ^f	18.8 ^f
Regional	14.4	11.9	16.5	14.2	11.5	16.4	16.2	15.1	16.9
Distant	2.8	2.3	3.4	2.7	2.2	3.3	3.1	2.5	3.8
Unstaged	8.3	6.2	10.2	8.1	5.5	10.4	8.7	15.3 ^f	0.0

Note: Small Cell Cancer of the Lung and Bronchus includes histologies 8041-8045.

^a SEER 9 areas (San Francisco, Connecticut, Detroit, Hawaii, Iowa, New Mexico, Seattle, Utah, Atlanta).

Based on follow-up of patients into 2010.

^b SEER 18 areas (San Francisco, Connecticut, Detroit, Hawaii, Iowa, New Mexico, Seattle, Utah, Atlanta, San Jose-Monterey, Los Angeles, Alaska Native Registry, Rural Georgia, California excluding SF/SJM/LA, Kentucky, Louisiana, New Jersey and Georgia excluding ATL/RG).

Based on follow-up of patients into 2010.

^c Period survival provides a 2009 estimate of survival by piecing together the most recent conditional survival estimates from several cohorts. It is computed here using three year calendar blocks (2007-2009: 0-1 year survival), (2006-2008: 1-2 year survival), (2005-2007: 2-3 year survival), (2004-2006: 3-4 year survival), (2003-2005: 4-5 years survival).

^d Stage at diagnosis is classified using SEER Summary Stage 2000.

^e The difference between 1975-1977 and 2003-2009 is statistically significant (p<.05).

^f The standard error is between 5 and 10 percentage points.

^g The standard error is greater than 10 percentage points.

- Statistic could not be calculated due to fewer than 25 cases during the time period.

Table 15.14
Non-Small Cell Cancer of the Lung and Bronchus (Invasive)

5-Year Relative and Period Survival (Percent) by Race, Sex, Diagnosis Year, Stage and Age

	All Races			Whites			Blacks		
	Total	Males	Females	Total	Males	Females	Total	Males	Females
5-Year Relative Survival (Percent)									
Year of Diagnosis:									
1975-1977 ^a	13.6	12.3	17.3	13.7	12.3	17.4	12.3	11.3	15.9
1978-1980 ^a	14.4	12.8	18.4	14.6	13.0	18.4	12.8	10.6	19.6
1981-1983 ^a	14.9	13.0	18.9	15.2	13.3	19.2	12.2	10.9	15.9
1984-1986 ^a	14.6	12.7	18.3	14.9	12.9	18.7	12.2	11.4	14.3
1987-1989 ^a	14.7	13.4	17.0	15.1	13.6	17.5	11.9	11.8	12.2
1990-1992 ^a	15.2	13.4	18.1	15.8	14.0	18.5	11.3	9.9	14.0
1993-1995 ^a	15.8	13.8	18.8	16.2	14.0	19.2	13.6	12.1	16.4
1996-1998 ^b	16.2	14.2	18.8	16.5	14.4	19.2	13.4	11.5	16.4
1999-2002 ^a	16.9	14.5	19.9	17.3	15.0	20.2	13.4	11.4	16.1
2003-2009 ^a	19.3 ^e	16.9 ^e	21.9 ^e	19.9 ^e	17.5 ^e	22.6 ^e	15.1 ^e	13.8 ^e	16.6
5-Year Period Survival (Percent) ^{bc}									
2009	19.0	16.4	21.9	19.5	17.0	22.3	15.1	12.9	18.0
Stage Distribution (%) 2003-2009 ^{bd}									
All Stages									
Number of cases	233,374	125,888	107,486	191,321	101,784	89,537	26,717	15,343	11,374
Percent	100%	100%	100%	100%	100%	100%	100%	100%	100%
Localized	17	15	19	18	16	20	13	12	15
Regional	22	23	22	22	23	22	22	22	22
Distant	54	56	52	53	55	51	59	60	58
Unstaged	6	6	7	7	6	7	5	5	5
5-Year Relative Survival (Percent), 2003-2009 ^b									
Age at Diagnosis:									
Ages <45	29.4	25.3	33.4	31.7	26.9	36.4	23.0	21.2	24.8
Ages 45-54	21.3	17.1	26.3	22.7	18.2	28.1	15.4	13.1	18.5
Ages 55-64	21.0	17.9	25.3	21.8	18.6	26.0	15.7	13.7	19.1
Ages 65-74	19.5	16.5	23.2	20.0	16.9	23.7	15.1	13.4	17.4
Ages 75+	13.2	11.6	14.7	13.6	11.9	15.2	8.7	7.4	10.0
Ages <65	21.6	18.1	26.2	22.7	18.9	27.4	16.1	14.0	19.4
Ages 65+	16.3	14.1	18.6	16.7	14.5	19.0	12.4	11.1	13.9
Stage ^d :									
All Stages	18.2	15.6	21.2	18.7	16.1	21.7	14.3	12.6	16.4
Localized	54.9	49.5	59.9	55.6	50.1	60.6	45.9	41.9	50.2
Regional	27.8	25.2	31.0	28.0	25.5	31.0	24.3	22.2	27.1
Distant	4.1	3.5	4.9	4.0	3.3	4.8	3.8	3.5	4.2
Unstaged	7.8	7.3	8.3	7.2	6.6	7.8	11.0	10.6	11.8

Note: Non-Small Cell Cancer of the Lung and Bronchus includes histologies 8000-8040, 8046-9049, 9056-9139, 9141-9589.

^a SEER 9 areas (San Francisco, Connecticut, Detroit, Hawaii, Iowa, New Mexico, Seattle, Utah, Atlanta).

Based on follow-up of patients into 2010.

^b SEER 18 areas (San Francisco, Connecticut, Detroit, Hawaii, Iowa, New Mexico, Seattle, Utah, Atlanta, San Jose-Monterey, Los Angeles, Alaska Native Registry, Rural Georgia, California excluding SF/SJM/LA, Kentucky, Louisiana, New Jersey and Georgia excluding ATL/RG).

Based on follow-up of patients into 2010.

^c Period survival provides a 2009 estimate of survival by piecing together the most recent conditional survival estimates from several cohorts. It is computed here using three year calendar blocks (2007-2009: 0-1 year survival), (2006-2008: 1-2 year survival), (2005-2007: 2-3 year survival), (2004-2006: 3-4 year survival), (2003-2005: 4-5 years survival).

^d Stage at diagnosis is classified using SEER Summary Stage 2000.

^e The difference between 1975-1977 and 2003-2009 is statistically significant ($p < .05$).

^f The standard error is between 5 and 10 percentage points.

^g The standard error is greater than 10 percentage points.

- Statistic could not be calculated due to fewer than 25 cases during the time period.

Table 16.8
Melanoma of the Skin (Invasive)

5-Year Relative and Period Survival (Percent) by Race, Sex, Diagnosis Year, Stage and Age

	All Races			Whites			Blacks		
	Total	Males	Females	Total	Males	Females	Total	Males	Females
5-Year Relative Survival (Percent)									
Year of Diagnosis:									
1960-1963 ^a	-	-	-	60	51	68	-	-	-
1970-1973 ^a	-	-	-	68	62	75	-	-	-
1975-1977 ^b	81.9	77.6	86.3	81.9	77.7	86.2	56.7 ^g	-	-
1978-1980 ^b	82.7	77.7	87.6	82.8	77.8	87.7	59.8 ^h	-	-
1981-1983 ^b	82.7	78.3	87.2	82.7	78.3	87.1	61.9 ^g	-	-
1984-1986 ^b	86.5	82.5	91.0	86.3	82.1	90.9	70.0 ^h	-	-
1987-1989 ^b	88.0	84.8	91.5	87.9	84.8	91.2	78.6 ^g	-	89.5 ^g
1990-1992 ^b	89.2	86.9	91.7	89.2	86.9	91.7	60.4 ^h	-	-
1993-1995 ^b	89.7	87.2	92.6	89.5	87.0	92.6	70.2 ^g	65.3 ^g	69.7 ^h
1996-1998 ^b	90.9	89.4	92.7	90.8	89.2	92.7	73.3 ^g	66.6 ^h	78.6 ^g
1999-2002 ^b	92.3	90.2	94.9	92.4	90.2	95.0	73.1 ^g	73.3 ^g	72.7 ^g
2003-2009 ^b	93.1 ^f	91.5 ^f	95.1 ^f	93.1 ^f	91.4 ^f	95.1 ^f	76.5 ^g	70.7 ^g	79.4 ^g
5-Year Period Survival (Percent) ^{cd}									
2009	91.7	89.9	94.0	91.4	89.6	93.8	69.1	58.3	76.4
Stage Distribution (%) 2003-2009 ^{ee}									
All Stages									
Number of cases	91,938	51,247	40,691	86,520	48,515	38,005	445	187	258
Percent	100%	100%	100%	100%	100%	100%	100%	100%	100%
Localized	84	82	86	84	82	86	56	49	62
Regional	9	10	7	9	10	7	24	26	22
Distant	4	4	3	4	5	3	14	19	10
Unstaged	4	4	4	3	4	3	6	6	6
5-Year Relative Survival (Percent), 2003-2009 ^c									
Age at Diagnosis:									
Ages <45	94.6	91.5	96.7	94.5	91.3	96.7	81.7	62.7 ^g	90.3
Ages 45-54	92.5	90.2	95.2	92.3	90.0	94.9	72.9 ^g	66.2 ^h	78.2 ^g
Ages 55-64	90.9	89.3	93.7	90.6	89.0	93.3	72.3 ^g	58.9 ^g	86.2 ^g
Ages 65-74	90.3	89.0	92.7	90.1	88.8	92.5	67.3 ^g	55.0 ^g	78.9 ^g
Ages 75+	86.5	87.0	85.5	86.0	86.5	85.2	65.5 ^g	71.2 ^h	56.4 ^h
Ages <65	92.7	90.2	95.5	92.5	89.9	95.3	76.6	62.8 ^g	86.0
Ages 65+	88.4	88.1	89.1	88.1	87.7	88.8	67.6 ^g	65.3 ^g	68.2 ^g
Stage ^e :									
All Stages	91.3	89.4	93.7	91.1	89.1	93.5	73.1	64.0	79.1
Localized	98.3	97.9	98.9	98.1	97.7	98.7	94.3	88.3 ^g	96.2
Regional	62.4	59.7	66.8	62.5	59.9	66.8	54.1 ^g	50.4 ^g	56.9 ^g
Distant	16.0	14.7	18.5	16.0	14.7	18.4	23.5 ^g	22.2 ^g	23.8 ^h
Unstaged	76.5	73.0	80.8	75.6	72.0	79.9	62.4 ^h	-	-

^a Based on End Results data from a series of hospital registries and one population-based registry.

^b SEER 9 areas (San Francisco, Connecticut, Detroit, Hawaii, Iowa, New Mexico, Seattle, Utah, Atlanta).

Based on follow-up of patients into 2010.

^c SEER 18 areas (San Francisco, Connecticut, Detroit, Hawaii, Iowa, New Mexico, Seattle, Utah, Atlanta, San Jose-Monterey, Los Angeles, Alaska Native Registry, Rural Georgia, California excluding SF/SJM/LA, Kentucky, Louisiana, New Jersey and Georgia excluding ATL/RG).

Based on follow-up of patients into 2010.

^d Period survival provides a 2009 estimate of survival by piecing together the most recent conditional survival estimates from several cohorts. It is computed here using three year calendar blocks (2007-2009: 0-1 year survival), (2006-2008: 1-2 year survival), (2005-2007: 2-3 year survival), (2004-2006: 3-4 year survival), (2003-2005: 4-5 years survival).

^e Stage at diagnosis is classified using SEER Summary Stage 2000.

^f The difference between 1975-1977 and 2003-2009 is statistically significant (p<.05).

^g The standard error is between 5 and 10 percentage points.

^h The standard error is greater than 10 percentage points.

- Statistic could not be calculated due to fewer than 25 cases during the time period.

Table 17.4
Mesothelioma

5-Year Relative and Period Survival (Percent) by Race, Sex, Diagnosis Year, Stage and Age

	All Races			Whites			Blacks		
	Total	Males	Females	Total	Males	Females	Total	Males	Females
5-Year Relative Survival (Percent)									
Year of Diagnosis:									
1960-1963 ^a	-	-	-	-	-	-	-	-	-
1970-1973 ^a	-	-	-	-	-	-	-	-	-
1975-1977 ^b	9.7	3.0	26.7	10.4	3.3	27.4 ^f	-	-	-
1978-1980 ^b	6.0	5.5	8.1	5.9	5.2	8.7	-	-	-
1981-1983 ^b	7.7	5.3	15.1	8.1	5.4	16.2	-	-	-
1984-1986 ^b	6.6	4.3	13.9	6.1	3.7	14.1	-	-	-
1987-1989 ^b	6.2	4.6	12.2	6.3	4.8	12.1	4.8	-	-
1990-1992 ^b	7.7	4.2	20.6	7.4	4.1	20.1	10.2 ^f	8.5 ^f	-
1993-1995 ^b	6.5	3.2	18.7	5.9	2.8	18.0	9.0	8.0 ^f	-
1996-1998 ^b	9.8	8.2	15.2	9.9	8.2	16.1	11.7 ^f	-	-
1999-2002 ^b	6.6	4.8	12.9	6.3	4.6	12.1	18.0 ^f	-	-
2003-2009 ^b	8.2	6.0 ^e	14.1	8.1	5.8 ^e	14.9	6.7 ^f	10.4 ^f	-
5-Year Period Survival (Percent) ^{cd}									
2009	8.8	6.5	15.4	8.6	6.4	15.1	11.3	8.1	-
5-Year Relative Survival (Percent), 2003-2009 ^c									
Age at Diagnosis:									
Ages <45	43.0	38.8 ^f	47.1 ^f	40.3 ^f	35.4 ^f	46.3 ^f	-	-	-
Ages 45-54	14.3	12.8	17.1	15.0	13.8	17.3	-	-	-
Ages 55-64	9.4	8.0	14.1	9.6	7.8	16.1	6.7	11.8 ^f	-
Ages 65-74	8.3	7.4	12.2	8.4	7.4	12.6	5.9	0.0	-
Ages 75+	3.9	2.1	7.7	4.1	2.3	8.4	0.0	0.0	-
Ages <65	14.5	11.8	21.1	14.3	11.5	21.2	15.1	14.8 ^f	-
Ages 65+	5.7	4.6	9.5	5.9	4.6	10.0	2.9	0.0	4.2

^a Based on End Results data from a series of hospital registries and one population-based registry.^b SEER 9 areas (San Francisco, Connecticut, Detroit, Hawaii, Iowa, New Mexico, Seattle, Utah, Atlanta).

Based on follow-up of patients into 2010.

^c SEER 18 areas (San Francisco, Connecticut, Detroit, Hawaii, Iowa, New Mexico, Seattle, Utah, Atlanta, San Jose-Monterey, Los Angeles, Alaska Native Registry, Rural Georgia, California excluding SF/SJM/LA, Kentucky, Louisiana, New Jersey and Georgia excluding ATL/RG).

Based on follow-up of patients into 2010.

^d Period survival provides a 2009 estimate of survival by piecing together the most recent conditional survival estimates from several cohorts. It is computed here using three year calendar blocks (2007-2009: 0-1 year survival), (2006-2008: 1-2 year survival), (2005-2007: 2-3 year survival), (2004-2006: 3-4 year survival), (2003-2005: 4-5 years survival).^e The difference between 1975-1977 and 2003-2009 is statistically significant (p<.05).^f The standard error is between 5 and 10 percentage points.^g The standard error is greater than 10 percentage points.

- Statistic could not be calculated due to fewer than 25 cases during the time period.

Table 18.8
Myeloma

5-Year Relative and Period Survival (Percent) by Race, Sex, Diagnosis Year and Age

	All Races			Whites			Blacks		
	Total	Males	Females	Total	Males	Females	Total	Males	Females
5-Year Relative Survival (Percent)									
Year of Diagnosis:									
1960-1963 ^a	-	-	-	12	13	10	-	-	-
1970-1973 ^a	-	-	-	19	20	17	-	-	-
1975-1977 ^b	24.6	24.0	25.3	24.1	23.6	24.7	29.5	29.3	29.5
1978-1980 ^b	25.8	24.3	27.4	24.8	24.2	25.4	32.1	26.9	36.9
1981-1983 ^b	27.5	25.7	29.4	27.2	25.4	28.9	28.9	29.6	27.9
1984-1986 ^b	27.2	27.6	26.8	25.9	25.7	26.2	31.8	33.3	30.3
1987-1989 ^b	27.2	28.9	25.5	26.9	29.1	24.5	30.0	29.7	30.3
1990-1992 ^b	29.2	30.4	27.8	28.3	29.5	26.9	34.1	38.1	30.3
1993-1995 ^b	31.6	32.1	31.2	30.5	31.2	29.7	35.1	34.7	35.5
1996-1998 ^b	32.3	34.4	30.0	32.1	34.2	29.7	31.0	32.4	29.9
1999-2002 ^b	35.5	37.7	32.8	35.5	37.9	32.5	35.5	38.6	32.8
2003-2009 ^b	44.9 ^f	45.8 ^f	44.0 ^f	45.2 ^f	47.1 ^f	42.9 ^f	44.2 ^f	41.1 ^f	47.0 ^f
5-Year Period Survival (Percent) ^{cd}									
2009	44.7	45.7	43.6	44.6	46.4	42.3	44.5	43.3	45.7
Stage Distribution (%) 2003-2009 ^{ee}									
All Stages									
Number of cases	27,397	14,802	12,595	20,272	11,274	8,998	5,294	2,571	2,723
Percent	100%	100%	100%	100%	100%	100%	100%	100%	100%
Localized	5	6	4	5	6	4	4	4	3
Regional	0	0	0	0	0	0	0	0	0
Distant	95	94	96	95	94	96	96	96	96
Unstaged	0	0	0	0	0	0	0	0	0
5-Year Relative Survival (Percent), 2003-2009 ^c									
Age at Diagnosis:									
Ages <45	67.2	68.2	65.6	67.8	70.1	63.2	63.9	60.5 ^g	66.0
Ages 45-54	59.3	58.6	60.2	61.9	61.8	62.0	51.5	48.2	55.0
Ages 55-64	52.0	51.5	52.7	52.3	51.7	53.3	50.2	49.9	50.5
Ages 65-74	42.2	41.4	43.2	42.6	42.2	43.3	40.9	38.1	43.5
Ages 75+	25.4	26.2	24.7	25.8	27.5	24.2	22.6	19.7	24.2
Ages <65	56.0	55.6	56.7	57.0	56.9	57.1	52.4	50.4	54.6
Ages 65+	33.4	34.0	32.7	33.5	34.9	32.0	32.6	31.0	33.8
Stage ^{ee} :									
All Stages	43.2	44.1	42.1	43.1	44.7	41.2	42.8	41.9	43.6
Localized	67.6	71.0	61.8	68.1	72.9	59.3	56.2	52.3 ^g	60.6 ^g
Regional	-	-	-	-	-	-	-	-	-
Distant	41.9	42.5	41.3	41.7	42.8	40.4	42.3	41.4	43.0
Unstaged	-	-	-	-	-	-	-	-	-

^a Based on End Results data from a series of hospital registries and one population-based registry.^b SEER 9 areas (San Francisco, Connecticut, Detroit, Hawaii, Iowa, New Mexico, Seattle, Utah, Atlanta).

Based on follow-up of patients into 2010.

^c SEER 18 areas (San Francisco, Connecticut, Detroit, Hawaii, Iowa, New Mexico, Seattle, Utah, Atlanta, San Jose-Monterey, Los Angeles, Alaska Native Registry, Rural Georgia, California excluding SF/SJM/LA, Kentucky, Louisiana, New Jersey and Georgia excluding ATL/RG).

Based on follow-up of patients into 2010.

^d Period survival provides a 2009 estimate of survival by piecing together the most recent conditional survival estimates from several cohorts. It is computed here using three year calendar blocks (2007-2009: 0-1 year survival), (2006-2008: 1-2 year survival), (2005-2007: 2-3 year survival), (2004-2006: 3-4 year survival), (2003-2005: 4-5 years survival).^e Stage at diagnosis is classified using SEER Summary Stage 2000.^f The difference between 1975-1977 and 2003-2009 is statistically significant (p<.05).^g The standard error is between 5 and 10 percentage points.^h The standard error is greater than 10 percentage points.

- Statistic could not be calculated due to fewer than 25 cases during the time period.

Table 19.8
Non-Hodgkin Lymphoma

5-Year Relative and Period Survival (Percent) by Race, Sex, Diagnosis Year and Age

	All Races			Whites			Blacks		
	Total	Males	Females	Total	Males	Females	Total	Males	Females
5-Year Relative Survival (Percent)									
Year of Diagnosis:									
1960-1963 ^a	-	-	-	31	31	31	-	-	-
1970-1973 ^a	-	-	-	41	39	43	-	-	-
1975-1977 ^b	46.5	45.5	47.5	46.8	46.3	47.4	48.4	42.6	54.8 ^g
1978-1980 ^b	47.9	46.1	49.8	47.9	46.2	49.6	51.1	46.9	56.7
1981-1983 ^b	50.5	50.2	50.9	50.8	50.5	51.1	49.4	49.0	49.8
1984-1986 ^b	51.6	50.0	53.3	51.9	50.5	53.5	46.7	44.5	49.6
1987-1989 ^b	50.9	47.6	54.9	51.3	48.1	55.3	46.1	41.7	51.2
1990-1992 ^b	50.7	46.7	55.8	51.6	47.6	56.5	42.0	38.1	47.5
1993-1995 ^b	52.5	48.7	57.4	53.2	49.7	57.6	42.1	35.9	53.8
1996-1998 ^b	58.8	57.0	61.0	59.5	57.6	61.6	54.0	52.6	56.1
1999-2002 ^b	65.2	63.0	67.9	66.3	64.3	68.7	57.2	52.2	62.9
2003-2009 ^b	71.2 ^f	70.0 ^f	72.6 ^f	72.3 ^f	71.5 ^f	73.3 ^f	63.5 ^f	58.8 ^f	68.9 ^f
5-Year Period Survival (Percent) ^{cd}									
2009	69.9	68.5	71.4	70.3	69.2	71.6	62.8	58.1	68.2
Stage Distribution (%) 2003-2009 ^{ee}									
All Stages									
Number of cases	91,474	49,146	42,328	76,878	41,355	35,523	7,297	3,945	3,352
Percent	100%	100%	100%	100%	100%	100%	100%	100%	100%
Localized	28	27	29	28	27	29	27	25	30
Regional	15	15	16	15	15	16	15	14	15
Distant	49	51	46	49	51	47	51	55	47
Unstaged	8	8	9	8	7	8	7	7	7
5-Year Relative Survival (Percent), 2003-2009 ^c									
Age at Diagnosis:									
Ages <45	78.6	75.6	83.3	80.4	77.4	85.4	65.6	62.6	70.1
Ages 45-54	77.6	74.3	82.4	79.4	76.3	84.1	62.7	57.2	70.7
Ages 55-64	75.0	71.9	78.9	76.0	73.1	79.7	65.0	59.9	71.6
Ages 65-74	69.7	66.7	73.0	70.3	67.6	73.3	61.8	52.6	69.9
Ages 75+	53.2	52.5	53.7	53.9	53.3	54.3	45.8	43.6	46.8
Ages <65	76.8	73.8	81.1	78.2	75.3	82.4	64.6	60.2	70.8
Ages 65+	60.6	59.5	61.7	61.1	60.2	62.0	55.1	49.6	59.0
Stage ^e :									
All Stages	69.0	67.6	70.6	69.6	68.5	70.8	61.9	57.9	66.6
Localized	81.5	80.9	82.2	82.1	81.8	82.4	76.0	72.5	79.4
Regional	72.5	71.7	73.4	73.1	72.9	73.4	67.8	63.2	72.5
Distant	60.9	59.6	62.7	62.0	60.8	63.5	52.3	49.5	56.1
Unstaged	67.1	66.1	68.0	65.8	65.1	66.6	63.9	59.0	69.0

^a Based on End Results data from a series of hospital registries and one population-based registry.
^b SEER 9 areas (San Francisco, Connecticut, Detroit, Hawaii, Iowa, New Mexico, Seattle, Utah, Atlanta). Based on follow-up of patients into 2010.
^c SEER 18 areas (San Francisco, Connecticut, Detroit, Hawaii, Iowa, New Mexico, Seattle, Utah, Atlanta, San Jose-Monterey, Los Angeles, Alaska Native Registry, Rural Georgia, California excluding SF/SJM/LA, Kentucky, Louisiana, New Jersey and Georgia excluding ATL/RG). Based on follow-up of patients into 2010.
^d Period survival provides a 2009 estimate of survival by piecing together the most recent conditional survival estimates from several cohorts. It is computed here using three year calendar blocks (2007-2009: 0-1 year survival), (2006-2008: 1-2 year survival), (2005-2007: 2-3 year survival), (2004-2006: 3-4 year survival), (2003-2005: 4-5 years survival).
^e Stage at diagnosis is classified using SEER Summary Stage 2000.
^f The difference between 1975-1977 and 2003-2009 is statistically significant (p<.05).
^g The standard error is between 5 and 10 percentage points.
^h The standard error is greater than 10 percentage points.
⁻ Statistic could not be calculated due to fewer than 25 cases during the time period.

Table 20.10
Cancer of the Oral Cavity and Pharynx (Invasive)

5-Year Relative and Period Survival (Percent) by Race, Sex, Diagnosis Year, Stage and Age

	All Races			Whites			Blacks		
	Total	Males	Females	Total	Males	Females	Total	Males	Females
5-Year Relative Survival (Percent)									
Year of Diagnosis:									
1960-1963 ^a	-	-	-	45	-	-	-	-	-
1970-1973 ^a	-	-	-	43	-	-	-	-	-
1975-1977 ^b	52.5	51.5	54.8	54.0	53.7	54.8	35.8	29.7	48.6
1978-1980 ^b	53.3	51.8	56.5	55.4	54.4	57.4	34.9	29.9	45.5
1981-1983 ^b	51.6	50.0	55.1	54.0	52.8	56.4	30.9	25.3	45.9
1984-1986 ^b	54.0	51.6	59.0	56.3	54.8	59.3	35.1	29.5	49.4
1987-1989 ^b	53.5	51.0	58.7	55.9	54.0	59.7	33.9	29.8	44.2
1990-1992 ^b	55.3	53.1	60.0	57.9	56.4	60.9	32.6	27.8	45.7
1993-1995 ^b	57.6	56.2	60.4	60.0	59.4	61.2	37.9	33.1	50.3
1996-1998 ^b	57.7	56.2	61.0	59.9	59.1	61.4	36.0	31.1	48.9
1999-2002 ^b	60.7	59.5	63.0	62.6	62.5	63.0	43.9	38.7	56.6
2003-2009 ^b	65.4 ^f	65.2 ^f	66.1 ^f	67.3 ^f	67.3 ^f	67.2 ^f	45.7 ^f	42.9 ^f	51.6
5-Year Period Survival (Percent) ^{cd}									
2009	63.1	62.4	64.8	64.7	64.4	65.4	44.5	40.5	52.6
Stage Distribution (%) 2003-2009 ^{ee}									
All Stages									
Number of cases	50,021	35,090	14,931	40,871	28,964	11,907	4,908	3,370	1,538
Percent	100%	100%	100%	100%	100%	100%	100%	100%	100%
Localized	31	27	41	32	28	43	20	15	31
Regional	47	50	38	47	51	38	50	54	41
Distant	17	18	14	15	16	13	25	27	22
Unstaged	6	5	6	5	5	6	5	4	6
5-Year Relative Survival (Percent), 2003-2009 ^c									
Age at Diagnosis:									
Ages <45	78.2	75.1	83.4	80.3	77.9	84.6	67.2	58.5	77.8
Ages 45-54	66.9	66.0	69.8	70.1	69.4	72.9	41.7	39.0	48.1
Ages 55-64	62.8	61.6	66.8	64.7	63.7	68.3	40.7	38.3	48.9
Ages 65-74	57.3	56.1	60.1	59.3	58.9	60.2	35.0	28.9	50.4
Ages 75+	49.7	49.7	49.8	51.2	51.0	51.3	34.3	30.5 ^g	36.8
Ages <65	67.0	65.2	72.0	69.1	67.7	73.5	46.2	41.6	56.7
Ages 65+	53.8	53.5	54.4	55.5	55.6	55.2	34.8	29.3	44.2
Stage ^e :									
All Stages	62.2	61.4	64.0	63.9	63.6	64.6	43.2	38.6	53.0
Localized	82.7	81.9	83.8	82.9	82.3	83.7	75.9	69.2	82.6
Regional	59.2	60.5	55.0	61.2	63.0	55.2	39.7	38.4	43.4
Distant	36.3	36.3	36.4	36.7	37.0	35.7	25.7	23.6	31.3
Unstaged	49.3	48.3	51.1	49.1	48.6	50.0	35.3	29.8	43.4 ^g

^a Based on End Results data from a series of hospital registries and one population-based registry.

^b SEER 9 areas (San Francisco, Connecticut, Detroit, Hawaii, Iowa, New Mexico, Seattle, Utah, Atlanta).

Based on follow-up of patients into 2010.

^c SEER 18 areas (San Francisco, Connecticut, Detroit, Hawaii, Iowa, New Mexico, Seattle, Utah, Atlanta, San Jose-Monterey, Los Angeles, Alaska Native Registry, Rural Georgia, California excluding SF/SJM/LA, Kentucky, Louisiana, New Jersey and Georgia excluding ATL/RG).

Based on follow-up of patients into 2010.

^d Period survival provides a 2009 estimate of survival by piecing together the most recent conditional survival estimates from several cohorts. It is computed here using three year calendar blocks (2007-2009: 0-1 year survival), (2006-2008: 1-2 year survival), (2005-2007: 2-3 year survival), (2004-2006: 3-4 year survival), (2003-2005: 4-5 years survival).

^e Stage at diagnosis is classified using SEER Summary Stage 2000.

^f The difference between 1975-1977 and 2003-2009 is statistically significant (p<.05).

^g The standard error is between 5 and 10 percentage points.

^h The standard error is greater than 10 percentage points.

- Statistic could not be calculated due to fewer than 25 cases during the time period.

Table 21.8
Cancer of the Ovary(Invasive)

5-Year Relative and Period Survival (Percent) by Race, Diagnosis Year, Stage and Age

	All Races, Females			White Females			Black Females		
	All	<65	65+	All	<65	65+	All	<65	65+
5-Year Relative Survival (Percent)									
Year of Diagnosis:									
1960-1963 ^a	-	-	-	32	-	-	32	-	-
1970-1973 ^a	-	-	-	36	-	-	32	-	-
1975-1977 ^b	36.0	44.2	21.4	35.3	43.5	21.1	41.8	48.9	24.9 ^g
1978-1980 ^b	37.7	47.2	22.2	36.8	46.4	22.4	38.8	49.2	12.8
1981-1983 ^b	38.8	50.2	23.1	38.5	50.2	23.1	37.5	45.4	22.6
1984-1986 ^b	38.4	49.4	24.0	37.5	48.5	23.7	39.3	52.1	21.2
1987-1989 ^b	38.1	51.0	23.6	38.1	51.2	23.9	33.6	46.9	16.9
1990-1992 ^b	40.4	55.3	24.1	40.3	55.9	24.1	35.8	49.7	16.8
1993-1995 ^b	41.4	55.7	26.4	40.5	55.4	25.8	41.5	54.8	26.9
1996-1998 ^b	43.8	57.0	28.3	43.1	56.5	28.3	39.1	53.1	20.6
1999-2002 ^b	43.5	56.2	27.9	43.0	56.5	27.8	36.2	45.0	22.4
2003-2009 ^b	44.1 ^f	56.6 ^f	27.5 ^f	43.9 ^f	56.7 ^f	28.2 ^f	35.9	45.0	20.5
5-Year Period Survival (Percent) ^{cd}									
2009	44.5	57.0	27.7	44.2	57.3	27.9	35.7	44.4	22.9
Stage Distribution (%) 2003-2009 ^{ee}									
All Stages									
Number of cases	33,789	18,876	14,913	28,227	15,287	12,940	2,781	1,633	1,148
Percent	100%	100%	100%	100%	100%	100%	100%	100%	100%
Localized	15	20	7	14	20	7	15	20	8
Regional	18	22	13	18	22	13	15	16	12
Distant	61	55	69	62	55	69	62	58	68
Unstaged	6	3	10	6	3	10	8	6	12
5-Year Relative Survival (Percent), 2003-2009 ^c									
Age at Diagnosis:									
Ages <45	74.8	-	-	74.9	-	-	70.2	-	-
Ages 45-54	57.5	-	-	58.5	-	-	40.0	-	-
Ages 55-64	46.2	-	-	46.8	-	-	32.2	-	-
Ages 65-74	36.9	-	-	37.8	-	-	24.0	-	-
Ages 75+	19.8	-	-	20.1	-	-	15.5	-	-
Ages <65	57.0	-	-	57.1	-	-	46.7	-	-
Ages 65+	27.5	-	-	28.0	-	-	20.2	-	-
Stage ^e :									
All Stages	44.2	57.0	27.5	44.0	57.1	28.0	36.1	46.7	20.2
Localized	91.9	93.2	87.1	91.9	93.5	86.7	88.4	90.0	80.7 ^g
Regional	72.0	79.6	55.9	72.6	80.2	57.2	54.4	63.6	35.4 ^g
Distant	27.3	35.6	18.6	27.6	36.2	19.1	20.0	26.3	11.9
Unstaged	21.5	49.1	9.5	20.6	48.3	9.9	25.7	47.9 ^g	10.4

Ovary excludes borderline cases or histologies 8442, 8451, 8462, 8472, and 8473.

^a Based on End Results data from a series of hospital registries and one population-based registry.

^b SEER 9 areas (San Francisco, Connecticut, Detroit, Hawaii, Iowa, New Mexico, Seattle, Utah, Atlanta).

Based on follow-up of patients into 2010.

^c SEER 18 areas (San Francisco, Connecticut, Detroit, Hawaii, Iowa, New Mexico, Seattle, Utah, Atlanta, San Jose-Monterey, Los Angeles, Alaska Native Registry, Rural Georgia, California excluding SF/SJM/LA, Kentucky, Louisiana, New Jersey and Georgia excluding ATL/RG).

Based on follow-up of patients into 2010.

^d Period survival provides a 2009 estimate of survival by piecing together the most recent conditional survival estimates from several cohorts. It is computed here using three year calendar blocks (2007-2009: 0-1 year survival), (2006-2008: 1-2 year survival), (2005-2007: 2-3 year survival), (2004-2006: 3-4 year survival), (2003-2005: 4-5 years survival).

^e Stage at diagnosis is classified using SEER Summary Stage 2000.

^f The difference between 1975-1977 and 2003-2009 is statistically significant (p<.05).

^g The standard error is between 5 and 10 percentage points.

^h The standard error is greater than 10 percentage points.

- Statistic could not be calculated due to fewer than 25 cases during the time period.

Table 22.8
Cancer of the Pancreas (Invasive)

5-Year Relative and Period Survival (Percent) by Race, Sex, Diagnosis Year, Stage and Age

	All Races			Whites			Blacks		
	Total	Males	Females	Total	Males	Females	Total	Males	Females
5-Year Relative Survival (Percent)									
Year of Diagnosis:									
1960-1963 ^a	-	-	-	1	1	2	1	0	3
1970-1973 ^a	-	-	-	2	2	2	2	0	3
1975-1977 ^b	2.4	2.5	2.2	2.5	2.6	2.3	2.3	2.5	1.9
1978-1980 ^b	2.8	2.7	3.0	2.5	2.6	2.5	5.6	4.1	7.0
1981-1983 ^b	2.8	2.4	3.2	2.6	2.1	3.0	3.6	3.7	3.2
1984-1986 ^b	2.9	2.3	3.4	2.6	2.1	3.1	4.6	3.9	5.0
1987-1989 ^b	3.5	3.3	3.7	3.2	3.1	3.3	5.5	5.1	5.8
1990-1992 ^b	4.3	4.1	4.5	4.4	4.2	4.5	3.6	3.2	3.9
1993-1995 ^b	3.9	3.6	4.3	3.9	3.5	4.2	3.6	3.3	3.7
1996-1998 ^b	4.4	4.6	4.1	4.2	4.7	3.6	3.4	3.1	3.5
1999-2002 ^b	5.3	5.4	5.3	5.3	5.7	4.9	5.0	3.3	6.5
2003-2009 ^b	6.4 ^f	6.0 ^f	6.7 ^f	6.5 ^f	6.1 ^f	6.9 ^f	5.5 ^f	6.0 ^f	5.1 ^f
5-Year Period Survival (Percent) ^{cd}									
2009	6.5	6.1	6.9	6.5	6.2	6.8	5.8	5.6	6.0
Stage Distribution (%) 2003-2009 ^{ee}									
All Stages									
Number of cases	53,856	26,551	27,305	43,261	21,582	21,679	6,518	2,977	3,541
Percent	100%	100%	100%	100%	100%	100%	100%	100%	100%
Localized	9	8	10	9	8	10	9	8	10
Regional	27	27	28	28	27	28	25	24	25
Distant	53	56	50	52	55	49	56	60	54
Unstaged	11	10	13	12	10	13	10	8	11
5-Year Relative Survival (Percent), 2003-2009 ^c									
Age at Diagnosis:									
Ages <45	22.4	18.2	27.6	22.3	18.8	26.8	20.5	15.1	25.5
Ages 45-54	10.1	8.7	12.1	10.1	8.7	12.0	8.9	8.2	10.1
Ages 55-64	6.8	5.7	8.5	7.2	6.0	8.8	4.5	3.0	6.2
Ages 65-74	5.6	4.9	6.2	5.5	4.8	6.3	4.6	4.3	4.6
Ages 75+	3.1	2.9	3.2	3.1	2.9	3.2	2.8	4.2	2.2
Ages <65	9.3	7.7	11.4	9.4	7.9	11.4	7.4	5.7	9.5
Ages 65+	4.1	3.9	4.3	4.1	3.8	4.3	3.7	4.3	3.2
Stage ^e :									
All Stages	6.0	5.6	6.5	6.0	5.6	6.4	5.5	5.2	5.7
Localized	24.1	22.8	25.0	23.8	22.7	24.4	19.6	17.6	20.6
Regional	9.0	8.6	9.3	9.0	8.5	9.4	9.2	10.7	8.2
Distant	2.0	2.1	2.0	2.1	2.1	2.0	1.3	1.0	1.5
Unstaged	4.1	4.4	3.8	3.6	3.8	3.4	6.9	7.8	6.2

^a Based on End Results data from a series of hospital registries and one population-based registry.^b SEER 9 areas (San Francisco, Connecticut, Detroit, Hawaii, Iowa, New Mexico, Seattle, Utah, Atlanta).

Based on follow-up of patients into 2010.

^c SEER 18 areas (San Francisco, Connecticut, Detroit, Hawaii, Iowa, New Mexico, Seattle, Utah, Atlanta, San Jose-Monterey, Los Angeles, Alaska Native Registry, Rural Georgia, California excluding SF/SJM/LA, Kentucky, Louisiana, New Jersey and Georgia excluding ATL/RG).

Based on follow-up of patients into 2010.

^d Period survival provides a 2009 estimate of survival by piecing together the most recent conditional survival estimates from several cohorts. It is computed here using three year calendar blocks (2007-2009: 0-1 year survival), (2006-2008: 1-2 year survival), (2005-2007: 2-3 year survival), (2004-2006: 3-4 year survival), (2003-2005: 4-5 years survival).^e Stage at diagnosis is classified using SEER Summary Stage 2000.^f The difference between 1975-1977 and 2003-2009 is statistically significant (p<.05).^g The standard error is between 5 and 10 percentage points.^h The standard error is greater than 10 percentage points.

- Statistic could not be calculated due to fewer than 25 cases during the time period.

Table 23.8
Cancer of the Prostate (Invasive)

5-Year Relative and Period Survival (Percent) by Race, Diagnosis Year, Stage and Age

	All Races, Males			White Males			Black Males		
	All	<65	65+	All	<65	65+	All	<65	65+
5-Year Relative Survival (Percent)									
Year of Diagnosis:									
1960-1963 ^a	-	-	-	50	-	-	35	-	-
1970-1973 ^a	-	-	-	63	-	-	55	-	-
1975-1977 ^b	67.8	73.4	66.1	68.5	75.2	66.6	60.6	62.2	60.0
1978-1980 ^b	70.1	75.2	68.6	71.2	76.7	69.6	62.0	65.0	60.6
1981-1983 ^b	72.0	75.9	70.9	73.1	77.6	71.9	62.7	64.9	61.9
1984-1986 ^b	75.1	77.4	74.6	76.4	79.1	75.7	65.5	67.1	64.7
1987-1989 ^b	82.8	83.2	82.7	84.4	84.7	84.3	71.2	72.6	70.7
1990-1992 ^b	92.9	93.0	92.9	94.0	94.0	94.1	84.3	86.7	83.3
1993-1995 ^b	95.1	95.8	94.9	95.9	96.5	95.6	91.6	93.2	90.6
1996-1998 ^b	97.4	98.5	96.8	97.9	98.9	97.3	94.7	96.6	93.3
1999-2002 ^b	99.6	99.2	99.6	99.7	99.5	99.6	97.4	98.2	96.5
2003-2009 ^b	99.7 ^f	99.6 ^f	99.6 ^f	99.8 ^f	99.8 ^f	99.7 ^f	98.0 ^f	98.9 ^f	96.7 ^f
5-Year Period Survival (Percent) ^{cd}									
2009	99.4	99.1	99.4	99.7	99.4	99.6	96.8	97.8	95.5
Stage Distribution (%) 2003-2009 ^{ee}									
All Stages									
Number of cases	360,503	153,032	207,471	281,240	116,836	164,404	50,726	26,635	24,091
Percent	100%	100%	100%	100%	100%	100%	100%	100%	100%
Localized	81	79	82	81	79	82	81	81	82
Regional	12	16	8	12	17	9	10	14	7
Distant	4	3	5	4	3	5	6	4	7
Unstaged	3	2	5	3	1	4	3	1	4
5-Year Relative Survival (Percent), 2003-2009 ^c									
Age at Diagnosis:									
Ages <45	95.9	-	-	95.2	-	-	97.0	-	-
Ages 45-54	98.4	-	-	98.5	-	-	97.9	-	-
Ages 55-64	99.3	-	-	99.5	-	-	98.3	-	-
Ages 65-74	100.0	-	-	100.0	-	-	98.0	-	-
Ages 75+	96.8	-	-	97.4	-	-	87.6	-	-
Ages <65	99.0	-	-	99.2	-	-	98.2	-	-
Ages 65+	99.2	-	-	99.5	-	-	94.9	-	-
Stage ^e :									
All Stages	99.2	99.0	99.2	99.5	99.2	99.5	96.7	98.2	94.9
Localized	100.0	100.0	100.0	100.0	100.0	100.0	100.0	100.0	100.0
Regional	100.0	100.0	100.0	100.0	100.0	100.0	100.0	100.0	99.9
Distant	27.9	31.4	26.4	27.2	31.2	25.7	27.7	30.5	25.8
Unstaged	72.9	84.6	69.8	69.5	83.5	66.3	62.9	77.0	57.3

^a Based on End Results data from a series of hospital registries and one population-based registry.

^b SEER 9 areas (San Francisco, Connecticut, Detroit, Hawaii, Iowa, New Mexico, Seattle, Utah, Atlanta).

Based on follow-up of patients into 2010.

^c SEER 18 areas (San Francisco, Connecticut, Detroit, Hawaii, Iowa, New Mexico, Seattle, Utah, Atlanta, San Jose-Monterey, Los Angeles, Alaska Native Registry, Rural Georgia, California excluding SF/SJM/LA, Kentucky, Louisiana, New Jersey and Georgia excluding ATL/RG).

Based on follow-up of patients into 2010.

^d Period survival provides a 2009 estimate of survival by piecing together the most recent conditional survival estimates from several cohorts. It is computed here using three year calendar blocks (2007-2009: 0-1 year survival), (2006-2008: 1-2 year survival), (2005-2007: 2-3 year survival), (2004-2006: 3-4 year survival), (2003-2005: 4-5 years survival).

^e Stage at diagnosis is classified using SEER Summary Stage 2000.

^f The difference between 1975-1977 and 2003-2009 is statistically significant (p<.05).

^g The standard error is between 5 and 10 percentage points.

^h The standard error is greater than 10 percentage points.

- Statistic could not be calculated due to fewer than 25 cases during the time period.

Table 24.8
Cancer of the Stomach (Invasive)

5-Year Relative and Period Survival (Percent) by Race, Sex, Diagnosis Year, Stage and Age

	All Races			Whites			Blacks		
	Total	Males	Females	Total	Males	Females	Total	Males	Females
5-Year Relative Survival (Percent)									
Year of Diagnosis:									
1960-1963 ^a	-	-	-	11	10	13	8	5	14
1970-1973 ^a	-	-	-	13	12	14	13	15	10
1975-1977 ^b	15.2	14.4	16.6	14.1	13.1	15.8	16.1	16.1	16.1
1978-1980 ^b	16.1	14.3	19.0	15.4	13.6	18.2	16.4	15.6	18.0
1981-1983 ^b	17.2	16.4	18.7	16.2	15.4	17.6	16.4	16.2	16.7
1984-1986 ^b	17.6	15.6	20.9	16.8	14.3	20.8	19.1	16.9	22.0
1987-1989 ^b	19.7	17.0	24.4	18.3	15.5	23.2	18.8	16.6	22.5
1990-1992 ^b	20.9	18.0	25.4	18.8	16.0	23.2	22.7	21.9	23.7
1993-1995 ^b	21.0	20.1	22.5	19.9	18.9	21.7	19.3	17.5	21.9
1996-1998 ^b	22.2	21.1	24.1	20.3	18.6	23.3	22.4	20.2	25.0
1999-2002 ^b	24.5	23.3	26.4	23.1	21.5	25.8	24.2	23.9	24.7
2003-2009 ^b	28.8 ^f	26.7 ^f	32.0 ^f	27.7 ^f	26.1 ^f	30.5 ^f	29.0 ^f	24.9 ^f	34.7 ^f
5-Year Period Survival (Percent) ^{cd}									
2009	28.8	27.2	31.2	27.4	25.7	30.0	27.9	25.7	30.7
Stage Distribution (%) 2003-2009 ^{ee}									
All Stages									
Number of cases	34,999	21,030	13,969	24,633	15,202	9,431	4,847	2,724	2,123
Percent	100%	100%	100%	100%	100%	100%	100%	100%	100%
Localized	25	23	28	24	23	28	25	23	28
Regional	30	32	27	30	32	26	29	31	28
Distant	34	36	32	35	37	34	34	37	30
Unstaged	11	9	13	11	9	13	11	9	14
5-Year Relative Survival (Percent), 2003-2009 ^c									
Age at Diagnosis:									
Ages <45	31.3	27.3	35.7	30.0	24.7	36.1	30.9	25.5	36.4
Ages 45-54	30.8	28.7	34.5	28.7	26.6	32.5	31.0	26.8	37.8
Ages 55-64	30.5	28.3	35.2	28.5	26.7	32.7	31.7	28.4	37.1
Ages 65-74	30.5	28.5	34.2	29.6	27.7	33.4	27.6	24.3	32.7
Ages 75+	21.8	19.7	24.0	20.9	18.4	23.6	17.8	15.8	19.2
Ages <65	30.8	28.3	35.1	28.8	26.4	33.5	31.3	27.5	37.1
Ages 65+	25.5	23.9	27.5	24.5	22.8	26.8	22.6	20.6	24.6
Stage ^e :									
All Stages	27.7	25.8	30.4	26.2	24.4	29.2	26.7	24.2	29.8
Localized	63.2	60.6	66.3	62.0	59.3	65.6	59.2	56.2	62.0
Regional	28.4	27.9	29.3	27.2	26.6	28.3	25.1	24.7	25.6
Distant	3.9	3.8	4.0	3.5	3.5	3.6	5.2	4.5	6.4
Unstaged	19.4	16.4	22.7	17.4	14.6	20.6	22.7	18.2	26.4

^a Based on End Results data from a series of hospital registries and one population-based registry.^b SEER 9 areas (San Francisco, Connecticut, Detroit, Hawaii, Iowa, New Mexico, Seattle, Utah, Atlanta).

Based on follow-up of patients into 2010.

^c SEER 18 areas (San Francisco, Connecticut, Detroit, Hawaii, Iowa, New Mexico, Seattle, Utah, Atlanta, San Jose-Monterey, Los Angeles, Alaska Native Registry, Rural Georgia, California excluding SF/SJM/LA, Kentucky, Louisiana, New Jersey and Georgia excluding ATL/RG).

Based on follow-up of patients into 2010.

^d Period survival provides a 2009 estimate of survival by piecing together the most recent conditional survival estimates from several cohorts. It is computed here using three year calendar blocks (2007-2009: 0-1 year survival), (2006-2008: 1-2 year survival), (2005-2007: 2-3 year survival), (2004-2006: 3-4 year survival), (2003-2005: 4-5 years survival).^e Stage at diagnosis is classified using SEER Summary Stage 2000.^f The difference between 1975-1977 and 2003-2009 is statistically significant (p<.05).^g The standard error is between 5 and 10 percentage points.^h The standard error is greater than 10 percentage points.

- Statistic could not be calculated due to fewer than 25 cases during the time period.

Table 25.8
Cancer of the Testis (Invasive)

5-Year Relative and Period Survival (Percent) by Race, Diagnosis Year, Stage and Age

	All Races, Males			White Males			Black Males		
	All	<50	50+	All	<50	50+	All	<50	50+
5-Year Relative Survival (Percent)									
Year of Diagnosis:									
1960-1963 ^a	-	-	-	63	-	-	-	-	-
1970-1973 ^a	-	-	-	72	-	-	-	-	-
1975-1977 ^b	82.6	83.3	77.6	82.5	83.2	77.3	-	-	-
1978-1980 ^b	88.8	89.5	82.2	89.2	89.8	83.1	73.1 ^g	78.0 ^g	-
1981-1983 ^b	92.0	92.5	86.1	92.2	92.7	86.2	87.7 ^g	84.7 ^g	-
1984-1986 ^b	92.6	93.6	80.4	92.9	94.0	80.6	87.0 ^g	89.4 ^g	-
1987-1989 ^b	95.2	95.0	95.7	95.5	95.7	95.3	88.4 ^g	87.8 ^g	-
1990-1992 ^b	95.8	95.8	93.8	96.2	96.1	94.7	83.5 ^g	-	-
1993-1995 ^b	95.8	96.3	86.7	96.1	96.6	87.8	88.0	89.4	-
1996-1998 ^b	95.6	96.3	86.6	95.8	96.4	86.6	88.7	90.1	-
1999-2002 ^b	96.2	96.6	90.9	96.5	96.9	91.4	86.3	87.1	-
2003-2009 ^b	96.5 ^f	96.8 ^f	93.8 ^f	97.0 ^f	97.2 ^f	95.1 ^f	90.1	90.1	-
5-Year Period Survival (Percent) ^{cd}									
2009	95.6	95.7	94.7	95.8	95.9	95.3	91.6	90.7	-
Stage Distribution (%) 2003-2009 ^{ee}									
All Stages									
Number of cases	15,169	13,589	1,580	13,855	12,410	1,445	423	375	48
Percent	100%	100%	100%	100%	100%	100%	100%	100%	100%
Localized	69	69	70	69	69	71	60	61	58
Regional	18	18	17	18	18	17	22	22	21
Distant	12	12	10	12	12	9	17	17	17
Unstaged	1	1	3	1	1	3	1	1	4
5-Year Relative Survival (Percent), 2003-2009 ^c									
Age at Diagnosis:									
Ages <45	95.4	-	-	95.7	-	-	88.4	-	-
Ages 45-54	95.3	-	-	95.4	-	-	92.7	-	-
Ages 55-64	92.5	-	-	92.7	-	-	-	-	-
Ages 65-74	96.1	-	-	95.1	-	-	-	-	-
Ages 75+	73.7 ^h	-	-	80.9 ^h	-	-	-	-	-
Ages <65	95.4	-	-	95.6	-	-	89.6	-	-
Ages 65+	88.6	-	-	90.4 ^g	-	-	-	-	-
Stage ^e :									
All Stages	95.3	95.4	94.2	95.6	95.6	94.8	89.5	89.3	87.1 ^g
Localized	99.1	99.1	99.2	99.1	99.1	98.9	99.4	98.6	100.0
Regional	95.8	95.7	96.3	96.5	96.4	97.0	84.4	84.3	-
Distant	73.8	74.8	62.4	74.2	75.0	63.9	60.7 ^g	61.4 ^g	-
Unstaged	81.8	87.5	65.6 ^g	84.1	89.2	68.8 ^g	-	-	-

^a Based on End Results data from a series of hospital registries and one population-based registry.^b SEER 9 areas (San Francisco, Connecticut, Detroit, Hawaii, Iowa, New Mexico, Seattle, Utah, Atlanta).

Based on follow-up of patients into 2010.

^c SEER 18 areas (San Francisco, Connecticut, Detroit, Hawaii, Iowa, New Mexico, Seattle, Utah, Atlanta, San Jose-Monterey, Los Angeles, Alaska Native Registry, Rural Georgia, California excluding SF/SJM/LA, Kentucky, Louisiana, New Jersey and Georgia excluding ATL/RG).

Based on follow-up of patients into 2010.

^d Period survival provides a 2009 estimate of survival by piecing together the most recent conditional survival estimates from several cohorts. It is computed here using three year calendar blocks (2007-2009: 0-1 year survival), (2006-2008: 1-2 year survival), (2005-2007: 2-3 year survival), (2004-2006: 3-4 year survival), (2003-2005: 4-5 years survival).^e Stage at diagnosis is classified using SEER Summary Stage 2000.^f The difference between 1975-1977 and 2003-2009 is statistically significant (p<.05).^g The standard error is between 5 and 10 percentage points.^h The standard error is greater than 10 percentage points.

- Statistic could not be calculated due to fewer than 25 cases during the time period.

Table 26.8
Cancer of the Thyroid (Invasive)

5-Year Relative and Period Survival (Percent) by Race, Sex, Diagnosis Year, Stage and Age

	All Races			Whites			Blacks		
	Total	Males	Females	Total	Males	Females	Total	Males	Females
5-Year Relative Survival (Percent)									
Year of Diagnosis:									
1960-1963 ^a	-	-	-	83	75	87	-	-	-
1970-1973 ^a	-	-	-	86	82	87	-	-	-
1975-1977 ^b	92.1	91.1	92.4	91.8	90.7	92.2	89.8	-	91.0
1978-1980 ^b	92.1	92.1	93.6	91.5	87.5	92.7	90.1	68.0 ^h	95.4
1981-1983 ^b	93.6	92.2	93.9	93.1	90.9	93.7	96.3	100.0	93.2
1984-1986 ^b	93.1	89.8	94.2	93.2	89.4	94.3	89.3	85.5 ^g	90.3
1987-1989 ^b	94.4	91.6	95.2	94.1	91.5	95.0	92.2	91.2 ^g	92.2
1990-1992 ^b	94.3	90.5	95.5	94.9	91.6	96.0	85.8	84.5 ^g	86.2
1993-1995 ^b	95.4	91.6	96.6	95.5	91.6	96.8	93.2	88.1 ^g	94.3
1996-1998 ^b	95.6	90.9	96.9	95.9	91.3	97.3	95.0	86.1 ^g	96.4
1999-2002 ^b	96.6	94.4	97.3	97.0	94.9	97.6	93.1	91.6	93.2
2003-2009 ^b	97.9 ^f	95.8 ^f	98.5 ^f	98.2 ^f	96.2 ^f	98.8 ^f	96.6 ^f	89.7	97.8
5-Year Period Survival (Percent) ^{cd}									
2009	98.0	95.9	98.6	98.2	96.2	98.7	97.0	89.7	98.0
Stage Distribution (%) 2003-2009 ^{ce}									
All Stages									
Number of cases	55,834	12,715	43,119	45,860	10,786	35,074	3,607	658	2,949
Percent	100%	100%	100%	100%	100%	100%	100%	100%	100%
Localized	68	59	71	69	59	72	77	68	79
Regional	25	32	23	25	32	23	15	19	14
Distant	4	8	4	4	7	3	6	11	5
Unstaged	2	2	2	2	2	2	2	2	2
5-Year Relative Survival (Percent), 2003-2009 ^c									
Age at Diagnosis:									
Ages <45	99.6	98.6	99.8	99.7	98.7	99.8	98.8	94.8	99.3
Ages 45-54	98.9	97.0	99.4	99.1	97.2	99.6	96.9	94.6	97.3
Ages 55-64	97.0	94.5	97.9	97.2	94.6	98.2	96.6	92.6	97.0
Ages 65-74	94.6	90.2	96.1	95.2	91.0	96.7	92.0	86.6 ^g	92.6
Ages 75+	84.9	80.8	85.7	85.9	81.1	86.5	76.2 ^g	63.9 ^h	78.6
Ages <65	98.9	97.0	99.4	99.0	97.2	99.5	97.9	94.4	98.5
Ages 65+	91.1	87.4	92.4	91.9	88.1	93.1	87.2	79.3 ^g	88.7
Stage ^e :									
All Stages	97.7	95.2	98.5	97.9	95.4	98.7	96.6	91.9	97.4
Localized	99.9	99.8	99.9	99.9	99.8	99.9	99.6	98.1	99.6
Regional	97.4	95.8	98.1	97.5	95.6	98.2	94.5	92.6	94.9
Distant	55.0	49.1	58.7	54.8	47.4	60.1	48.2	52.6 ^g	46.0 ^g
Unstaged	87.5	77.8	90.4	86.8	77.2	89.8	88.4 ^g	-	88.7 ^g

^a Based on End Results data from a series of hospital registries and one population-based registry.^b SEER 9 areas (San Francisco, Connecticut, Detroit, Hawaii, Iowa, New Mexico, Seattle, Utah, Atlanta).

Based on follow-up of patients into 2010.

^c SEER 18 areas (San Francisco, Connecticut, Detroit, Hawaii, Iowa, New Mexico, Seattle, Utah, Atlanta, San Jose-Monterey, Los Angeles, Alaska Native Registry, Rural Georgia, California excluding SF/SJM/LA, Kentucky, Louisiana, New Jersey and Georgia excluding ATL/RG).

Based on follow-up of patients into 2010.

^d Period survival provides a 2009 estimate of survival by piecing together the most recent conditional survival estimates from several cohorts. It is computed here using three year calendar blocks (2007-2009: 0-1 year survival), (2006-2008: 1-2 year survival), (2005-2007: 2-3 year survival), (2004-2006: 3-4 year survival), (2003-2005: 4-5 years survival).^e Stage at diagnosis is classified using SEER Summary Stage 2000.^f The difference between 1975-1977 and 2003-2009 is statistically significant (p<.05).^g The standard error is between 5 and 10 percentage points.^h The standard error is greater than 10 percentage points.

- Statistic could not be calculated due to fewer than 25 cases during the time period.

Table 27.8
Cancer of the Urinary Bladder (Invasive and *In Situ*)

5-Year Relative and Period Survival (Percent) by Race, Sex, Diagnosis Year, Stage and Age

	All Races			Whites			Blacks		
	Total	Males	Females	Total	Males	Females	Total	Males	Females
5-Year Relative Survival (Percent)									
Year of Diagnosis:									
1960-1963 ^a	-	-	-	53	53	53	24	24	24
1970-1973 ^a	-	-	-	61	61	60	36	38	27
1975-1977 ^b	72.3	73.7	68.2	73.2	74.3	70.2	50.3	56.5	38.1 ^g
1978-1980 ^b	73.9	75.1	70.3	74.7	75.4	72.3	54.6	62.6	40.4
1981-1983 ^b	76.7	78.0	72.7	77.4	78.5	74.0	59.5	64.9	47.0 ^g
1984-1986 ^b	76.7	78.1	72.7	77.2	78.5	73.6	59.4	62.3	52.8
1987-1989 ^b	79.0	81.3	72.0	79.8	81.9	73.2	62.6	67.5	52.9
1990-1992 ^b	79.2	81.7	71.9	80.2	82.6	73.1	63.2	66.0	58.5
1993-1995 ^b	80.2	82.1	75.0	81.0	82.5	76.8	59.7	67.0	45.6
1996-1998 ^b	79.1	80.4	75.5	79.8	81.1	76.0	62.1	65.0	55.4
1999-2002 ^b	80.1	81.3	76.4	81.1	82.0	78.6	66.0	70.2	58.9
2003-2009 ^b	79.8 ^f	81.5 ^f	74.7 ^f	80.5 ^f	82.0 ^f	75.7 ^f	63.7 ^f	68.6 ^f	54.1 ^f
5-Year Period Survival (Percent) ^{cd}									
2009	77.8	79.5	72.7	78.2	79.8	73.4	64.5	69.0	55.7
Stage Distribution (%) 2003-2009 ^{ee}									
All Stages									
Number of cases	86,597	64,975	21,622	77,292	58,412	18,880	4,557	2,988	1,569
Percent	100%	100%	100%	100%	100%	100%	100%	100%	100%
In Situ	51	52	49	52	52	51	38	41	32
Localized	35	35	34	35	35	34	39	38	41
Regional	7	7	8	7	7	8	11	10	13
Distant	4	3	5	4	3	5	7	6	9
Unstaged	3	2	3	2	2	3	4	4	4
5-Year Relative Survival (Percent), 2003-2009 ^c									
Age at Diagnosis:									
Ages <45	87.9	89.1	84.7	88.3	89.2	85.8	77.6	80.3	67.7 ^g
Ages 45-54	84.2	84.4	83.4	84.9	84.5	86.0	70.2	75.0	57.2
Ages 55-64	83.2	83.5	82.0	83.6	83.8	83.0	70.3	71.8	64.8
Ages 65-74	79.1	80.1	75.7	79.6	80.3	76.9	66.5	71.3	57.2
Ages 75+	71.5	74.2	64.8	72.1	74.7	65.3	55.1	58.4	50.4
Ages <65	83.9	84.2	82.7	84.4	84.4	84.2	71.2	74.2	62.7
Ages 65+	74.7	76.8	68.8	75.3	77.1	69.6	60.7	65.6	53.1
Stage ^e :									
All Stages	77.9	79.4	73.1	78.3	79.7	74.0	64.9	69.5	56.1
In Situ	96.4	96.4	96.4	96.5	96.4	96.7	91.2	91.9	88.8
Localized	70.2	72.4	63.6	70.4	72.4	64.0	62.0	66.8	53.6
Regional	33.0	35.0	27.7	33.0	35.0	27.3	28.5	31.8	23.6
Distant	5.4	6.0	4.2	5.3	5.7	4.4	7.2	8.5	5.4
Unstaged	49.6	53.3	41.2	46.9	50.8	37.7	45.0	51.3 ^g	33.7 ^g

^a Based on End Results data from a series of hospital registries and one population-based registry.

^b SEER 9 areas (San Francisco, Connecticut, Detroit, Hawaii, Iowa, New Mexico, Seattle, Utah, Atlanta).

Based on follow-up of patients into 2010.

^c SEER 18 areas (San Francisco, Connecticut, Detroit, Hawaii, Iowa, New Mexico, Seattle, Utah, Atlanta, San Jose-Monterey, Los Angeles, Alaska Native Registry, Rural Georgia, California excluding SF/SJM/LA, Kentucky, Louisiana, New Jersey and Georgia excluding ATL/RG).

Based on follow-up of patients into 2010.

^d Period survival provides a 2009 estimate of survival by piecing together the most recent conditional survival estimates from several cohorts. It is computed here using three year calendar blocks (2007-2009: 0-1 year survival), (2006-2008: 1-2 year survival), (2005-2007: 2-3 year survival), (2004-2006: 3-4 year survival), (2003-2005: 4-5 years survival).

^e Stage at diagnosis is classified using SEER Summary Stage 2000.

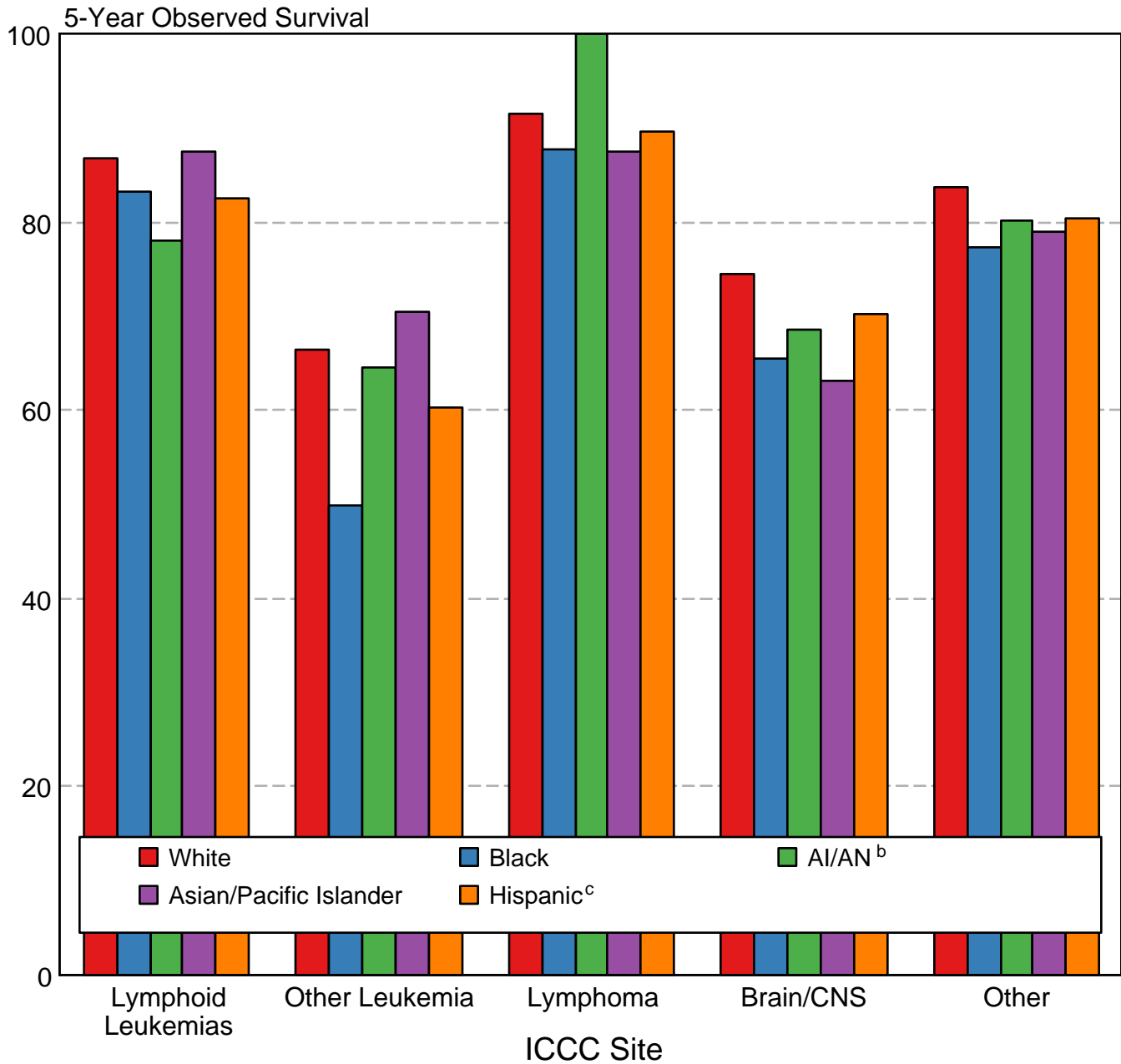
^f The difference between 1975-1977 and 2003-2009 is statistically significant ($p < .05$).

^g The standard error is between 5 and 10 percentage points.

^h The standard error is greater than 10 percentage points.

- Statistic could not be calculated due to fewer than 25 cases during the time period.

Childhood Cancer 5-Year Observed Survival (%) by ICCC Group^a and Race/Ethnicity Both Sexes, Under 20 Years of Age, 2003-2009



Source: SEER 18 areas (San Francisco, Connecticut, Detroit, Hawaii, Iowa, New Mexico, Seattle, Utah, Atlanta, San Jose-Monterey, Los Angeles, Alaska Native Registry, Rural Georgia, California excluding SF/SJM/LA, Kentucky, Louisiana, New Jersey and Georgia excluding ATL/RG).

International Classification of Childhood Cancer is based on ICD-O-3. Steliarova-Foucher E, Stiller C, Lacour B, Kaatsch P. International Classification of Childhood Cancer, Third Edition. Cancer. April 1, 2005; Vol 103, No. 7, pg 1457-1467.

^a Excludes myelodysplastic syndromes (MDS) and benign brain tumors.

^b American Indian/Alaska Native. Survival data for American Indian/Alaska Native are based on the CHSDA (Contract Health Service Delivery Area) counties.

^c Hispanic is not mutually exclusive from whites, blacks, Asian/Pacific Islanders, and American Indians/Alaska Natives. Survival data for Hispanics are based on NHIA and excludes cases from the Alaska Native Registry.