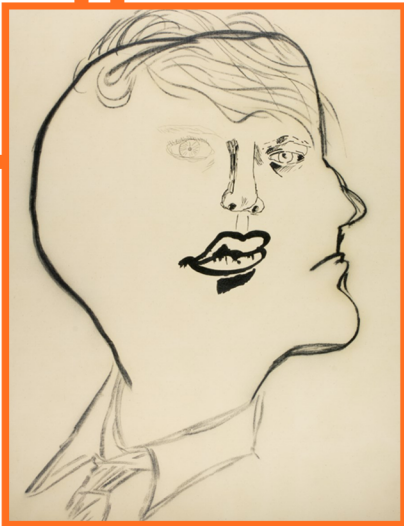
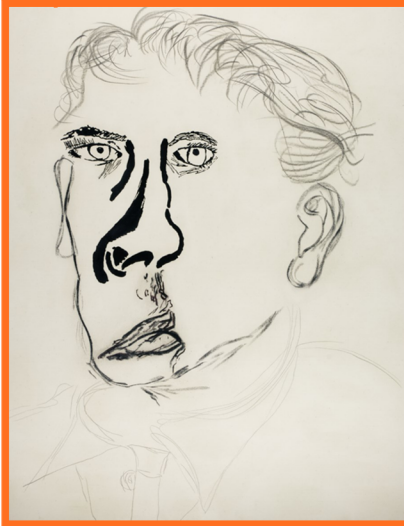


Artist: **RAY SMITH** (1949–2018)

Does a portrait have to be lifelike? Does it have to be made by one person? Does it need to be drawn from one viewpoint?



Ray Smith: *Transitional Object*  
acrylic, charcoal & pencil on canvas  
© The Artists Estate Images © Southampton Cultural Services



Ray Smith: *Secondary Revision*  
acrylic, charcoal & pencil on canvas  
© The Artists Estate Images © Southampton Cultural Services



Ray Smith: *Compromise Formation*  
acrylic, charcoal & pencil on canvas  
© The Artists Estate Images © Southampton Cultural Services

### Did you know?

Artist Ray Smith, who was also a teacher, asked his students to draw a facial feature of a model and to pass on the paper to their neighbour, who then drew a different feature and passed it on, making a face drawn in different styles from different perspectives by different people. He recreated the students' work on a large canvas to make the central artwork above (*Secondary Revision*.)

### Try it at home!

Get a blank piece of paper and fold it into three. Can you draw a face from the front, from the left side and then from the right side? Cut out different parts, like the nose and the mouth, then re-arrange them to make your own portrait.

### Challenge:

Smith uses different materials like charcoal, paint and pencil.

Can you try this?

### Top tip:

Why not get a friend or family member to model for you?

