



CANADA

Region: North America

Income Category: High Income



Human capital – knowledge, skills, and good health – empowers people to achieve their potential and drives economic growth. This brief tracks progress by Canada in building and using human capital. This page presents the Human Capital Index (HCI), its components parts, and relevant benchmarks. The HCI quantifies how underinvestment in education and health for today’s children reduces future incomes. Data are the most recently available as of 2020. The back page presents a set of Human Capital Complementary Indicators (HCCI) that shows progress at each stage of the lifecycle.

THE HUMAN CAPITAL INDEX

A child born in Canada will be **80%** as productive when she grows up as she could be if she enjoyed complete education and full health.

This is higher than the average for the North America region (75%) and High Income countries (71%).

THE HUMAN CAPITAL INDEX COMPONENTS

- **Probability of Survival to Age 5.** Of every 100 children born in Canada, **100** survive to age 5.
- **Expected Years of School.** In Canada, a child who starts school at age 4 can expect to complete **13.7** years of school by her 18th birthday.
- **Learning-Adjusted Years of School.** Factoring in what children actually learn, expected years of school is **11.7** years.
- **Average Harmonized Test Scores.** Students in Canada score **534** on a scale where 625 represents advanced attainment and 300 represents minimum attainment.
- **Adult Survival Rate.** Across Canada, **94%** of 15-year-olds survive until age 60.
- **Fraction of Children Under 5 Not Stunted.** Internationally comparable data on stunting are not available for Canada.

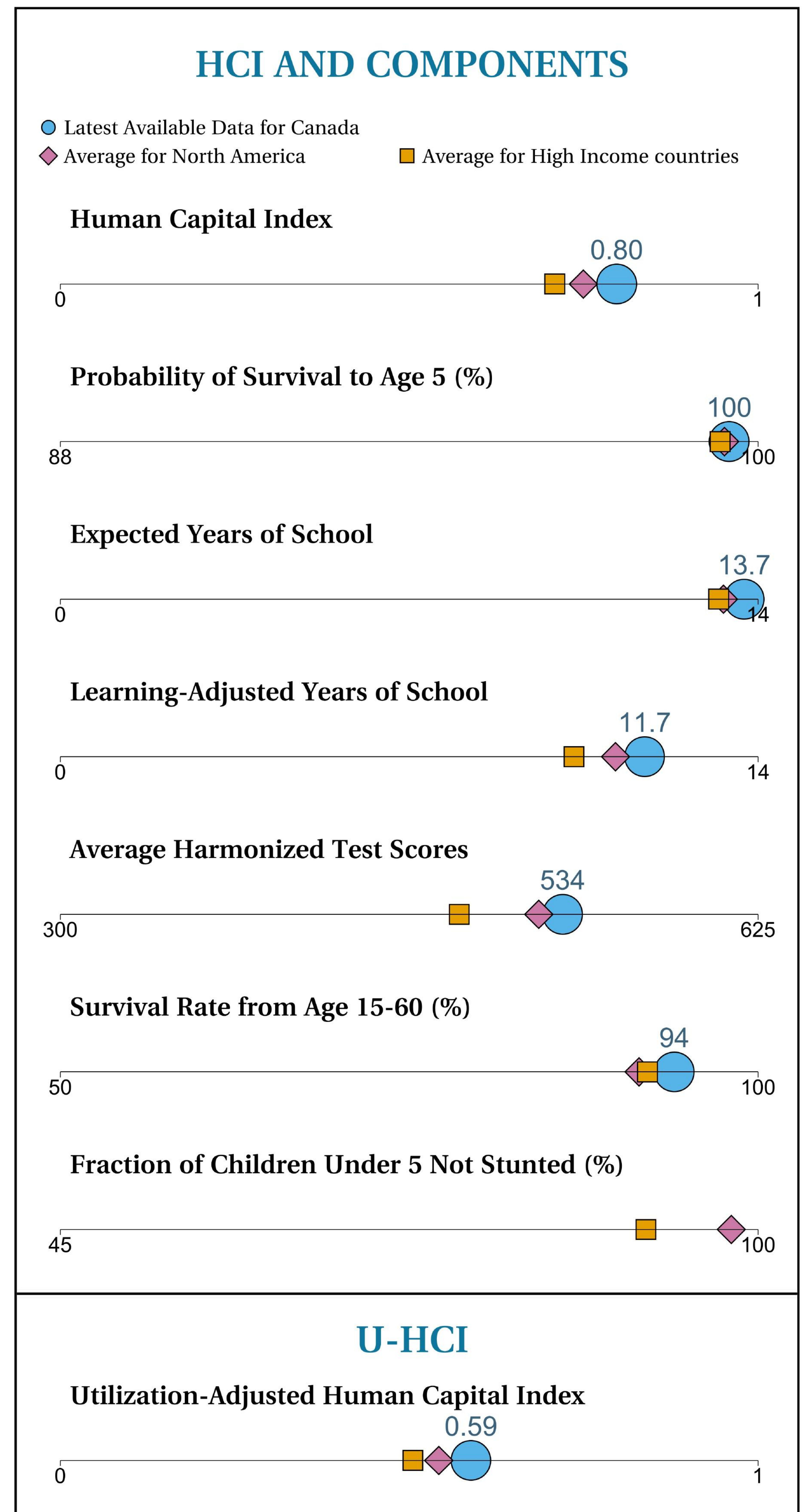
UTILIZATION-ADJUSTED HUMAN CAPITAL INDEX

The Utilization-adjusted Human Capital Index (U-HCI) scales down the HCI by taking into account how many adults are not employed. The U-HCI for Canada is **0.59**. Thus, children born today will be 59% as productive in adulthood as they could have been if they had access to full health and education, and they became fully employed adults. The U-HCI for girls is even lower at 0.58.

Gender differences in Human Capital and Utilization

	Boys	Girls	Overall
Human Capital Index	0.79	0.81	0.80
Utilization-Adjusted HCI	0.60	0.58	0.59

Note: - represents no internationally comparable data available.



Note: Missing symbols indicate internationally comparable data are not available to generate the corresponding statistic.



The Human Capital Complementary Indicators (HCCIs) offer a snapshot of human capital investments at four stages of the lifecycle. The figures show the latest available data, benchmarked against regional averages. The figures also report progress over the previous 5 years.

EARLY CHILDHOOD

- **Neonatal mortality rate.** The neonatal mortality rate is 3 per 1,000 live births (2021), compared to 4 in 2016. The indicator is similar to the regional average.
- **Participation rate in organized learning.** In 2019, 98% of children who were one year younger than the official primary school entry age participated in an organized learning program. The indicator is above the regional average.
- **DTP vaccination rate, third dose.** In 2022, 92% of infants received the third dose of the diphtheria, tetanus and pertussis vaccine, compared to 91% in 2017. The indicator is lower than the regional average.

SCHOOL AGE

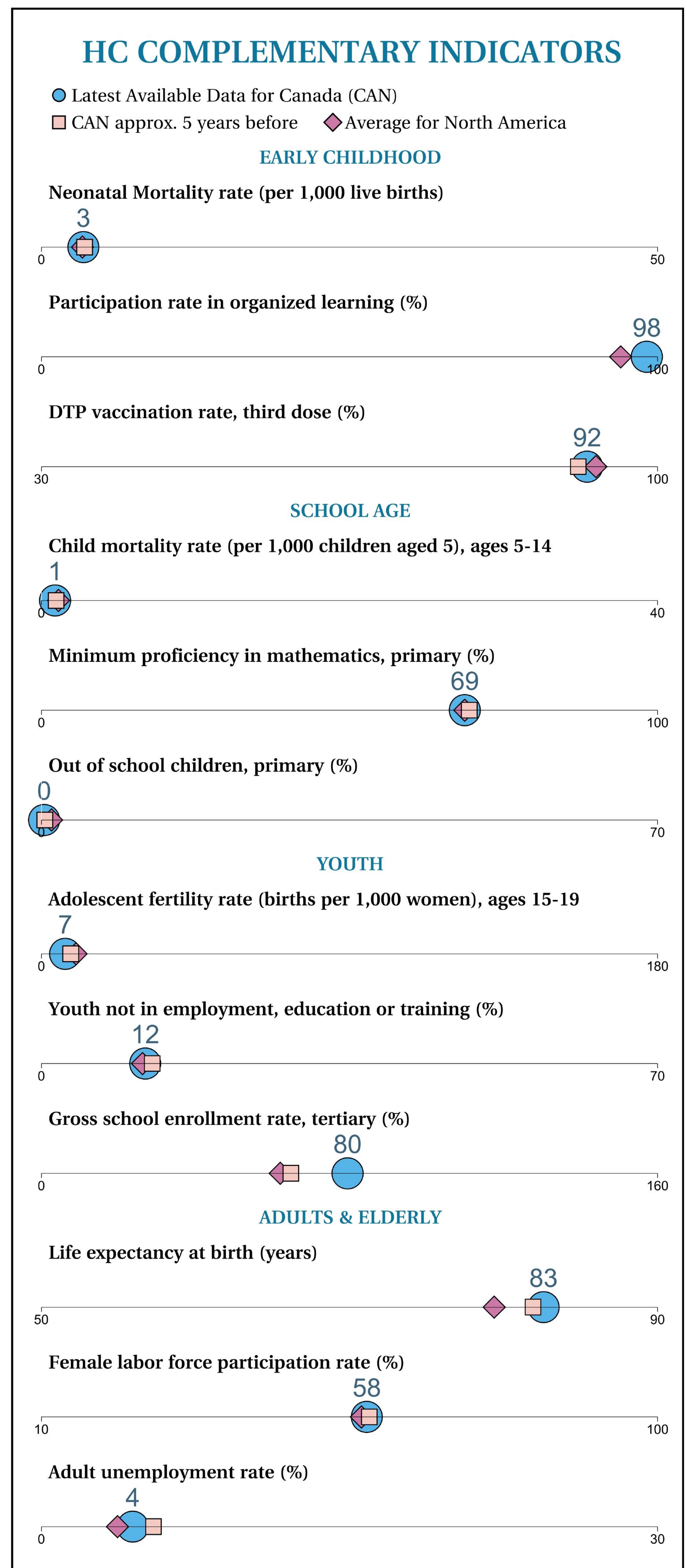
- **Child mortality rate.** The mortality rate for children ages 5-14 is 1 per 1,000 children aged 5 (2021). This remains unchanged since 2016. The indicator is similar to the regional average.
- **Minimum proficiency in mathematics, primary.** In 2019, 69% of children who completed primary school achieved the minimum learning outcomes in mathematics. This remains unchanged since 2015. The indicator is similar to the regional average.
- **Out of school children.** In 2020, 0% of primary-school-age children were out of school. This remains unchanged since 2015. The indicator is lower than the regional average.

YOUTH

- **Adolescent fertility rate.** The number of births for every 1,000 women ages 15-19 is 7 (2021), compared to 9 in 2016. The indicator is lower than the regional average.
- **Youth not in employment, education or training.** In 2022, 12% of youth (ages 15-24) were not in employment, education or training, compared to 13% in 2017. The indicator is similar to the regional average.
- **Gross school enrollment rate, tertiary.** Tertiary school enrollment as a percentage of people ages 18-24 is 80% (2020), compared to 65% in 2015. The indicator is higher than the regional average.

ADULTS & ELDERLY

- **Life expectancy at birth.** Life expectancy at birth is 83 years (2021), compared to 82 in 2016. The indicator is higher than the regional average.
- **Female labor force participation rate.** Female labor force participation as a percentage of the female working-age population (ages 25+) is 58% (2022). This remains unchanged since 2017. The indicator is above the regional average.
- **Adult unemployment rate.** Unemployed adults as a share of the adult labor force (ages +25) is 4% (2022), compared to 5% in 2017. The indicator is similar to the regional average.



Note: Missing symbols indicate internationally comparable data are not available to generate the corresponding statistic.

