

ACHIEVING DEVELOPMENT RESULTS AT A GLANCE

The Japan Social Development Fund (JSDF) grants in the FY18 portfolio are aligned with the program's strategic framework.

Innovative. Projects apply innovative development approaches or ideas. Some projects may comprise entirely new innovations. Others may replicate approaches that have not yet been adopted in the recipient country, but have been tested successfully in other countries.

Responsive to the poor. Projects support community-driven development by empowering vulnerable or marginalized groups at the grassroots level to participate in efforts to improve their livelihoods.

Promote rapid response. Projects provide reasonably rapid results and deliver benefits to targeted stakeholders.

Build capacity. Projects empower and strengthen local communities, non-governmental organizations (NGOs), civil society organizations (CSOs), and other stakeholders to improve their organizational and institutional capacities to engage target groups in their development.

JSDF's Catalytic Role

▶ Grants reach poorest and marginalized groups not accessible by other interventions.

▶ Projects pilot innovative activities that can be scaled up through World Bank Group (WBG) operations and that inform government policies.

Forty-four projects in the FY18 portfolio (of which 7 approved grants were pending effectiveness) were developed around five of the JSDF program's thematic areas of focus along with their corresponding and established program-level results framework:

- (i) **Livelihood Support;**
 - (ii) **Improved Nutrition and Early Childhood Development;**
 - (iii) **Environmentally Sustainable Agricultural Practices;**
 - (iv) **Local Governance and Accountability;**
- and
- (v) **Basic Health and Sanitation Services.**

ACHIEVING DEVELOPMENT RESULTS BY THE NUMBERS

1.5 million direct beneficiaries, of whom **63 percent** are female

▶ LIVELIHOOD SUPPORT

80,668 direct beneficiaries (67 percent female)

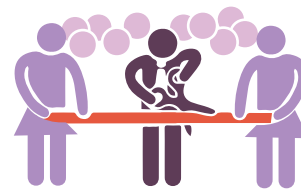
23,268 persons started new employment/businesses under eight projects

71,632 persons received skills training and business management support

154 percent average increase in household incomes in nine projects

80 percent of beneficiaries of capacity building were female and **95 percent** of beneficiaries were still in business at project closure in rural Ghana

100 percent of participating municipalities in the Philippines integrated community enterprises (created under the project) into local economic development plans



▶ ENVIRONMENTALLY SUSTAINABLE AGRICULTURAL PRACTICES

10,431 direct beneficiaries (47 percent female)

7,873 farmers trained in sustainable agricultural practices



41 percent increase in yields and **49 percent** rise in sales in participating farms in Kyrgyz Republic





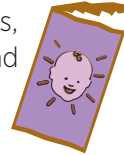
▶ IMPROVED NUTRITION AND EARLY CHILDHOOD DEVELOPMENT

733,993 direct beneficiaries (73 percent female)

79,739 practitioners, adolescent girls, lactating mothers, and pregnant women benefited from nutrition education, basic nutrition, and early child care and development (ECCD) services

35,514 vulnerable children enrolled in ECCD programs toward transitioning to mainstream schools

140,000 children <2 years received micronutrient sprinkles, over 17,000 pregnant women received iron supplements, and 17.5 percent increase in households growing nutritious agricultural products between 2015 and 2017 in Tajikistan



1,000 families trained in sweet potato cutting in Timor-Leste

97 percent of some 18,000 beneficiaries received cash transfers on time in Togo

Decline in severe stunting among beneficiaries in Tajikistan from 30 percent in 2015 to 9.5 percent in 2017

Decline in children with low birth weight by 6 percent and increase in nutritional diversity by 5 percent among beneficiaries in Togo between baseline and project closure

100 percent of pregnant/lactating women in target group practiced core nutrition and childhood behaviors in Karnataka, India with assistance from 447 village nutrition volunteers

▶ BASIC HEALTH AND SANITATION SERVICES

248,430 direct beneficiaries (55 percent female)

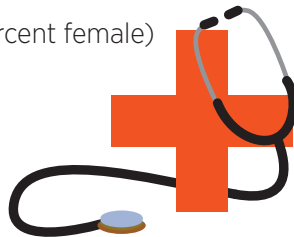
222,635 persons with access to improved sanitation facilities

19,889 beneficiaries of post-Ebola mental health interventions in Liberia

59 percent improvement in depression, post-traumatic stress disorder, and disability among beneficiaries in Liberia

25,343 school children practiced daily hand washing in schools in target communities in Ghana

100 percent of large tenements in target urban area with adequate sanitation and operations and maintenance expenses covered by users in Mozambique



▶ LOCAL GOVERNANCE AND ACCOUNTABILITY

442,640 direct beneficiaries (73 percent female)

8,626 poor and vulnerable people participating in the Social Accountability Framework process (access to information, open budget, citizen monitoring) in Cambodia were able to cite at least two standards for schools and health center services

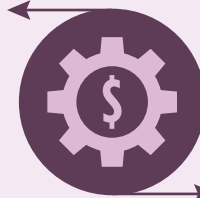
4,814 poor and vulnerable people participating in Social Accountability Framework process in Cambodia were able to cite changes for school, health center, and commune budgets (budget awareness)

1,796 members of School Board of Trustees, of whom 72 percent are female, in Kyrgyz Republic

LEVERAGING DEVELOPMENT RESULTS

**FY18 JSDF Leverage:
Scaling Up into WBG-Financed Projects**

**JSDF Grants of
\$16 M**



**leveraged over
\$280 M**

**in World Bank Project
Financing (FY17-18)**

Examples of JSDF Grants and Leveraging

JSDF grant for Social Inclusion and Improvement of Livelihoods of Youth, Vulnerable Women and Handicapped in Post-Conflict Western Cote d'Ivoire **\$2.70 M** leveraged **\$100 M** IDA through Youth Employment and Skills Development Additional Financing and Youth Employment Projects.

JSDF grant for Zambia Livelihood Improvement Project amounting to **\$2.75 M** helped leverage **\$65 M** World Bank-financed Girl's Education and Women's Empowerment and Livelihoods Project.