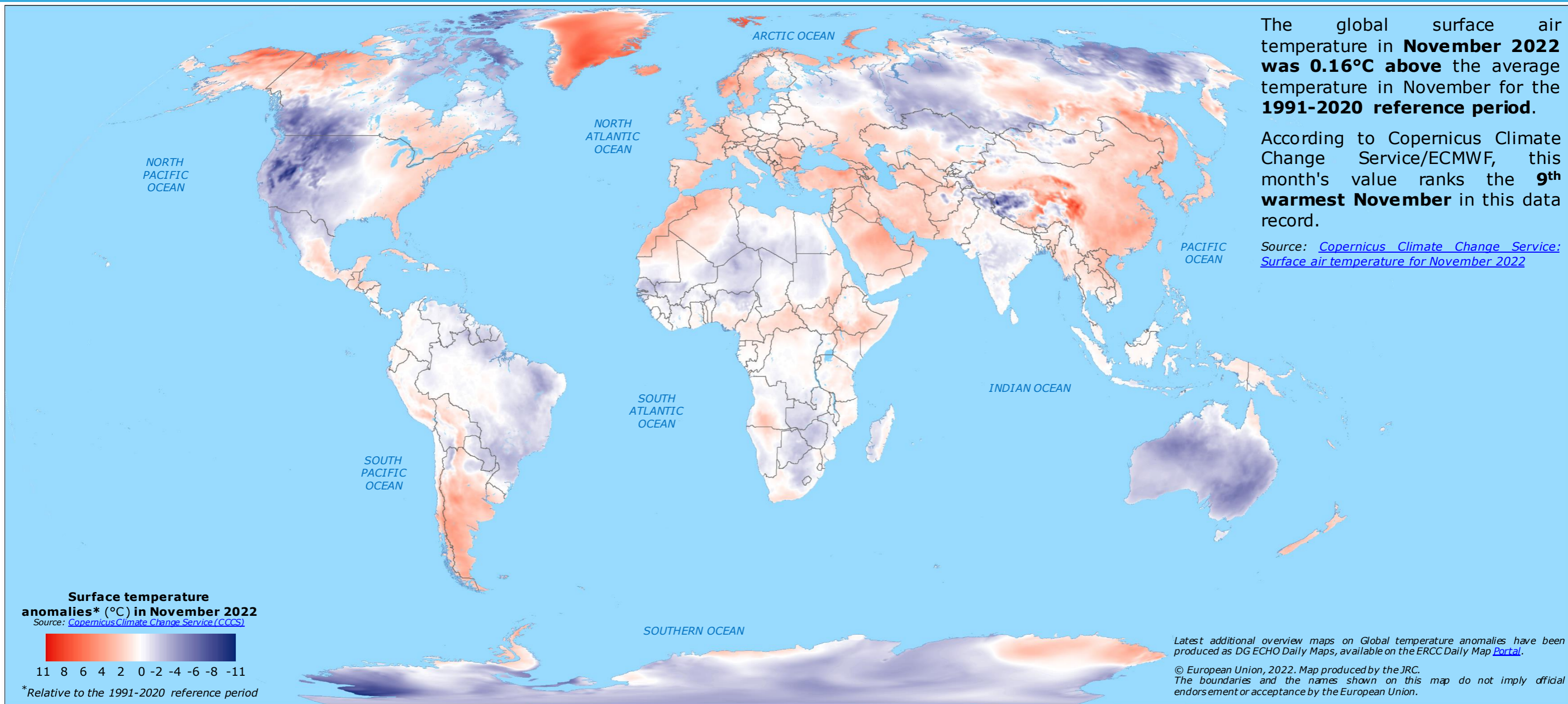


World | Temperature Anomalies in November 2022



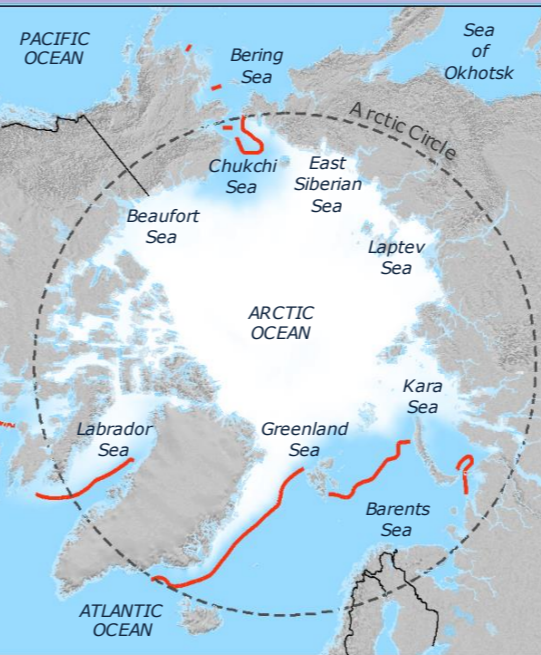
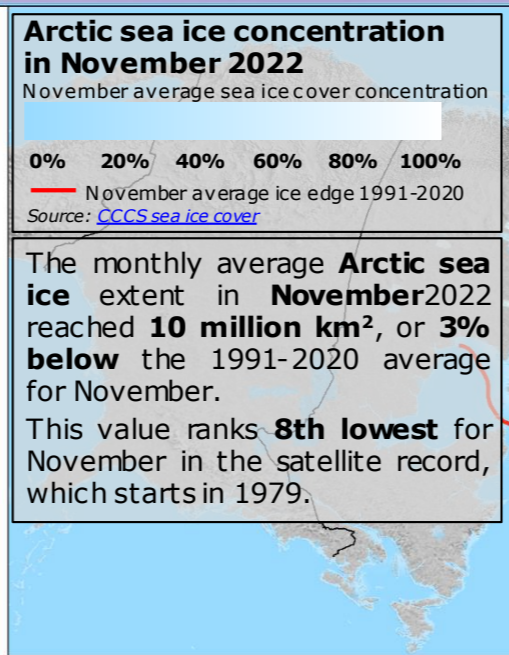
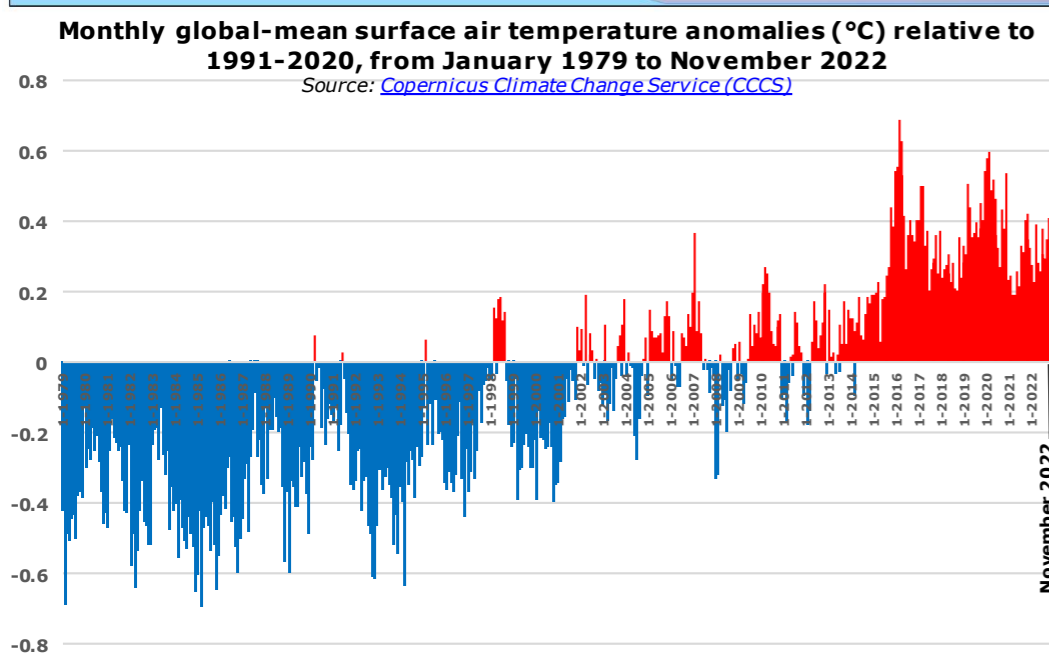
The global surface air temperature in **November 2022** was **0.16°C** above the average temperature in November for the **1991-2020** reference period.

According to Copernicus Climate Change Service/ECMWF, this month's value ranks the **9th warmest November** in this data record.

Source: [Copernicus Climate Change Service: Surface air temperature for November 2022](#)

Latest additional overview maps on Global temperature anomalies have been produced as DG ECHO Daily Maps, available on the ERCC Daily Map [Portal](#).

© European Union, 2022. Map produced by the JRC. The boundaries and the names shown on this map do not imply official endorsement or acceptance by the European Union.



In November 2022, the **Antarctic sea ice** extent reached **15.6 million km²** on average, or **5% below** the 1991-2020 average for November.

This was the **5th lowest** extent for November within the 44-year satellite dataset.

