

Guide to the North-Central California Marine Protected Areas *Alder Creek to Pigeon Point*



California's coast and ocean are among our most treasured resources.

The productivity, wildness and beauty found here is central to California's identity, heritage, and economy. The need to safeguard the long-term health of our marine life was recognized by the California Legislature in 1999 with the passage of the Marine Life Protection Act (MLPA). This act aims to protect California's marine natural heritage through establishing a statewide network of marine protected areas designed, created, and managed using sound science and stakeholder input. Marine protected areas protect the diversity and abundance of marine life, the habitats they depend on, and the integrity of marine ecosystems. The MLPA recognizes that a combination of marine reserves, marine conservation areas and marine parks can help conserve biological diversity, provide a sanctuary for marine life, enhance recreational and educational opportunities, provide scientific reference points to assist resource management decisions, and protect a variety of marine habitats, communities and ecosystems for their economic and intrinsic value, for generations to come.

Implementation of the MLPA along the California coast is being completed through a regional planning process that culminates in adoption of new and revised marine protected areas by the California Fish and Game Commission. The north-central coast's marine protected areas are one component of a statewide network designed to meet the goals of the MLPA. The marine protected areas detailed in this booklet stretch from Alder Creek, near Point Arena, to Pigeon Point, and have been in effect since May, 2010.





Guide to the North-Central California MPAs

Table of Contents

Marine Life Protection Act (MLPA) Goals	2
MLPA Common Terms and Definitions	3
Frequently Asked Questions.....	4
<i>Maps, Coordinates, Regulations</i>	
North-Central Coast MPAs - Alder Creek to Bodega Head.....	6
North-Central Coast MPAs - Drakes Estero to Half Moon Bay	7
<i>Individual MPAs, listed north to south</i>	
Point Arena SMR	8
Point Arena SMCA.....	10
Sea Lion Cove SMCA.....	12
Saunders Reef SMCA.....	14
Del Mar Landing SMR	16
Stewarts Point SMCA	18
Stewarts Point SMR.....	20
Salt Point SMCA	22
Gerstle Cove SMR.....	22
Russian River SMRMA	24
Russian River SMCA	26
Bodega Head SMR.....	28
Bodega Head SMCA.....	30
Estero Americano SMRMA	32
Estero de San Antonio SMRMA.....	34
Point Reyes SMR	36
Point Reyes SMCA	38
Point Reyes Headlands Special Closure	40
Estero de Limantour SMR	42
Drakes Estero SMCA.....	44
Point Resistance Rock Special Closure	46
Double Point/Stormy Stack Special Closure.....	48
Duxbury Reef SMCA.....	50
North Farallon Island SMR	52
North Farallon Islands Special Closure	54
Southeast Farallon Island SMR	56
Southeast Farallon Island SMCA.....	56
Southeast Farallon Island Special Closure.....	58
Egg (Devil's Slide) Rock to Devil's Slide Special Closure.....	60
Montara SMR	62
Pillar Point SMCA	64



Goals of the Marine Life Protection Act (MLPA)

California Fish and Game Code Section 2853

- (a) The Legislature finds and declares that there is a need to reexamine and redesign California's MPA system to increase its coherence and its effectiveness at protecting the state's marine life, habitat and ecosystems.
- (b) To improve the design and management of that system, the Commission, pursuant to Section 2859, shall adopt a Marine Life Protection Program which shall have all of the following goals:
1. To protect the natural diversity and abundance of marine life, and the structure, function and integrity of marine ecosystems.
 2. To help sustain, conserve and protect marine life populations, including those of economic value, and rebuild those that are depleted.
 3. To improve recreational, educational, and study opportunities provided by marine ecosystems that are subject to minimal human disturbance, and to manage these uses in a manner consistent with protecting biodiversity.
 4. To protect marine natural heritage, including protection of representative and unique marine life habitats in California waters for their intrinsic value.
 5. To ensure that California's MPAs have clearly defined objectives, effective management measures and adequate enforcement and are based on sound scientific guidelines.
 6. To ensure that the state's MPAs are designed and managed, to the extent possible, as a network.



MLPA Commonly Used Terms & Definitions

Marine Protected Area (MPA)

MPAs are named, discrete geographic marine or estuarine areas seaward of the mean high tide line or the mouth of a coastal river, including any area of intertidal or subtidal terrain, together with its overlying water and associated flora and fauna, that has been designated by law or administrative action to protect or conserve marine life and habitat. There are three types of MPAs in California: state marine reserve (SMR), state marine park (SMP) and state marine conservation area (SMCA).

State Marine Reserve (SMR)

The most restrictive classification, these are no-take areas (i.e. extractive activities are prohibited, and it is unlawful to injure, damage, take, or possess any living, geological, or cultural marine resource, except under a scientific collecting permit or authorized research, restoration, or monitoring).

State Marine Park (SMP)

May allow recreational take, or limit it in some way, but does not allow commercial take.

State Marine Conservation Area (SMCA)

May limit recreational and/or commercial take to protect a specific resource or habitat.

State Marine Recreational Management Area (SMRMA)

A non-terrestrial marine or estuarine area designated so the managing agency may provide, limit, or restrict recreational opportunities to meet other than purely local needs while preserving basic resource values for present and future generations. Three SMRMAs were adopted in the north-central coast region.



Frequently Asked Questions

Q How much area was set aside off the north-central coast as **MPAs and how much of that area will be closed to fishing?**

The adopted regulations include 22 MPAs, three State Marine Recreational Managed Areas, and six special closures with varying degrees of protection.

Type of Marine Protected Area	Number	Area of MPAs on North-Central Coast in square miles	Percent of North-Central Coast Waters
SMR	10	83 mi ²	11%
SMCA	10	62 mi ²	8%
SMCA (future SMP)*	2	8 mi ²	1%
Total	22	153 mi²	20%
Other Area Types			
SMRMA	3	0.6	less than 1%
Special Closure	6	1.1	N/A**

**These small closures (300' and 1,000' closures) often overlap other MPAs and provide additional protection in sensitive areas.

These areas cover approximately 153 square miles, or about 20 percent, of state waters within the north-central coast region (Alder Creek to Pigeon Point). Of the 21 MPAs, 10 are no-take state marine reserves which represent about 84 of the 153 square miles, or about 11 percent of the study region.

Q How will the **MLPA** be implemented across the state?

Implementation has been split into five distinct study regions that when completed will have assessed all state waters. The study regions are:

- Central Coast: Pigeon Point to Point Conception
(Implemented 9/21/07)
- North Coast: Oregon/CA border to Point Arena/Alder Creek
(Process started June 2009)
- San Francisco Bay
- North-Central Coast: Point Arena/Alder Creek to Pigeon Point
(Implemented 5/1/10)
- South Coast: Point Conception to CA/Mexico border
(Adoption expected late 2010)

Q Can I travel through or anchor in an MPA with catch on board?

Yes, transit and anchoring are allowed. The language is found in Section 632(a) (7) and (8):

(7) **Anchoring.** Vessels shall be allowed to anchor in any marine protected area or marine managed area with catch onboard unless otherwise specified in sub-section 632(b), Areas and Special Regulations for Use. Fishing gear shall not be deployed in





the water while anchored in a state marine reserve. Fishing gear, except legal fishing gear used to take species identified as allowed for take in sub-section 632(b), shall not be deployed in the water while anchored in a state marine recreational management area, state marine park or state marine conservation area. Anchoring regulations shall be consistent with federal law and allowances made for anchoring required by emergency or severe weather.



(8) **Transit or Drifting.** Vessels shall be allowed to transit through marine protected areas and marine managed areas with catch onboard. Fishing gear shall not be deployed in the water while transiting through a state marine reserve. Fishing gear, except legal fishing gear used to take species identified as allowed for take in sub-section 632(b), shall not be deployed in the water while transiting through a state marine recreational management area, state marine park or state marine conservation area.

Q Can I enter an MPA if I don't intend to fish or participate in any consumptive activities?

Access into marine protected areas or marine managed areas for non-consumptive uses, including but not limited to swimming, surfing, diving, boating, hiking and walking, is allowed unless otherwise specified in sub-section 632(b), Areas and Special Regulations for Use.



Q Can I feed fish inside an MPA?

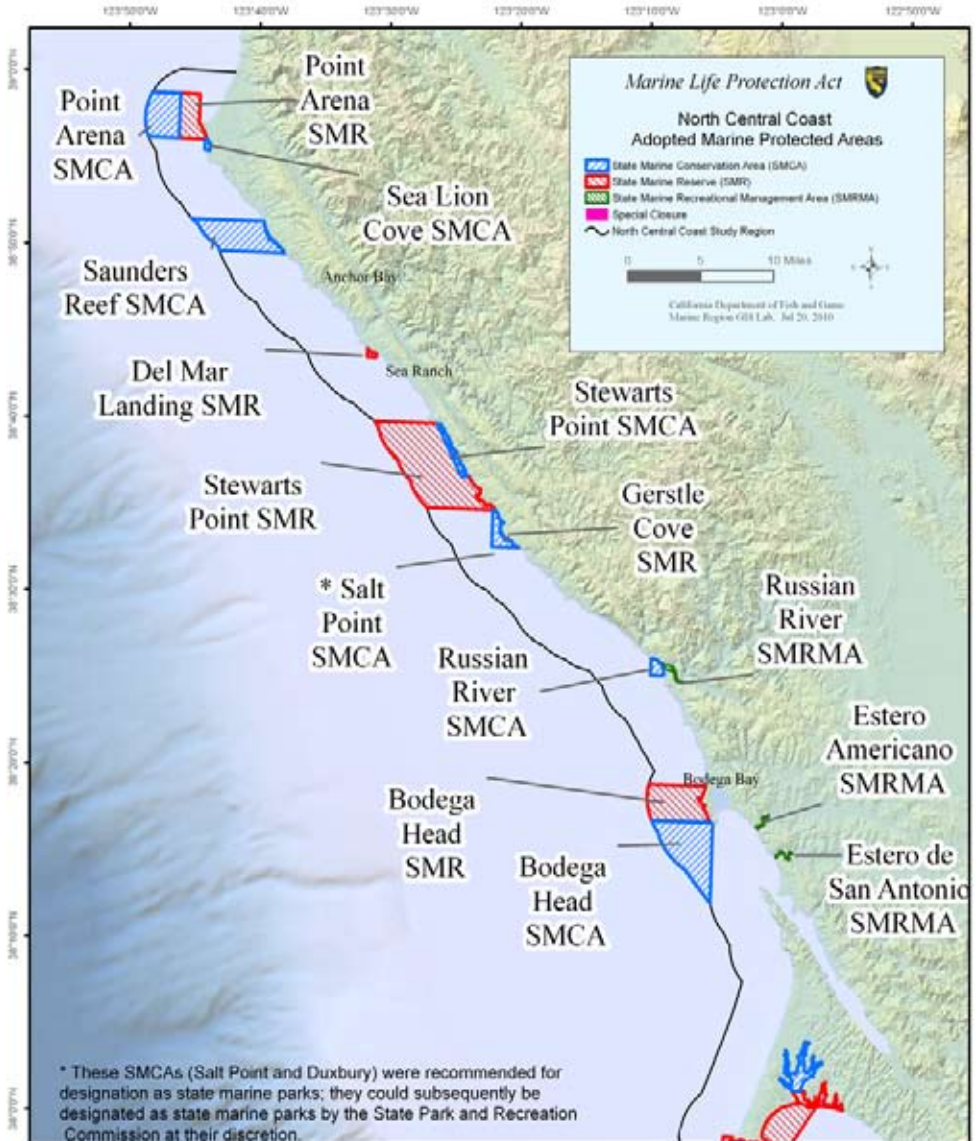
The feeding of fish and wildlife is prohibited, except for permitted scientific collection pursuant to Section 650 or as a result of authorized fishing within state marine conservation areas, state marine parks, and state marine recreational management areas.

***A Note about Duxbury and Salt Point SMCAs...**

In order to designate a State Marine Park, California State Parks requires another level of approval in addition to that of the Fish and Game Commission. Duxbury SMCA and Salt Point SMCA were both designed as SMPs but were adopted as SMCAs, and may be designated by the Park and Recreation Commission as SMPs in a future action.



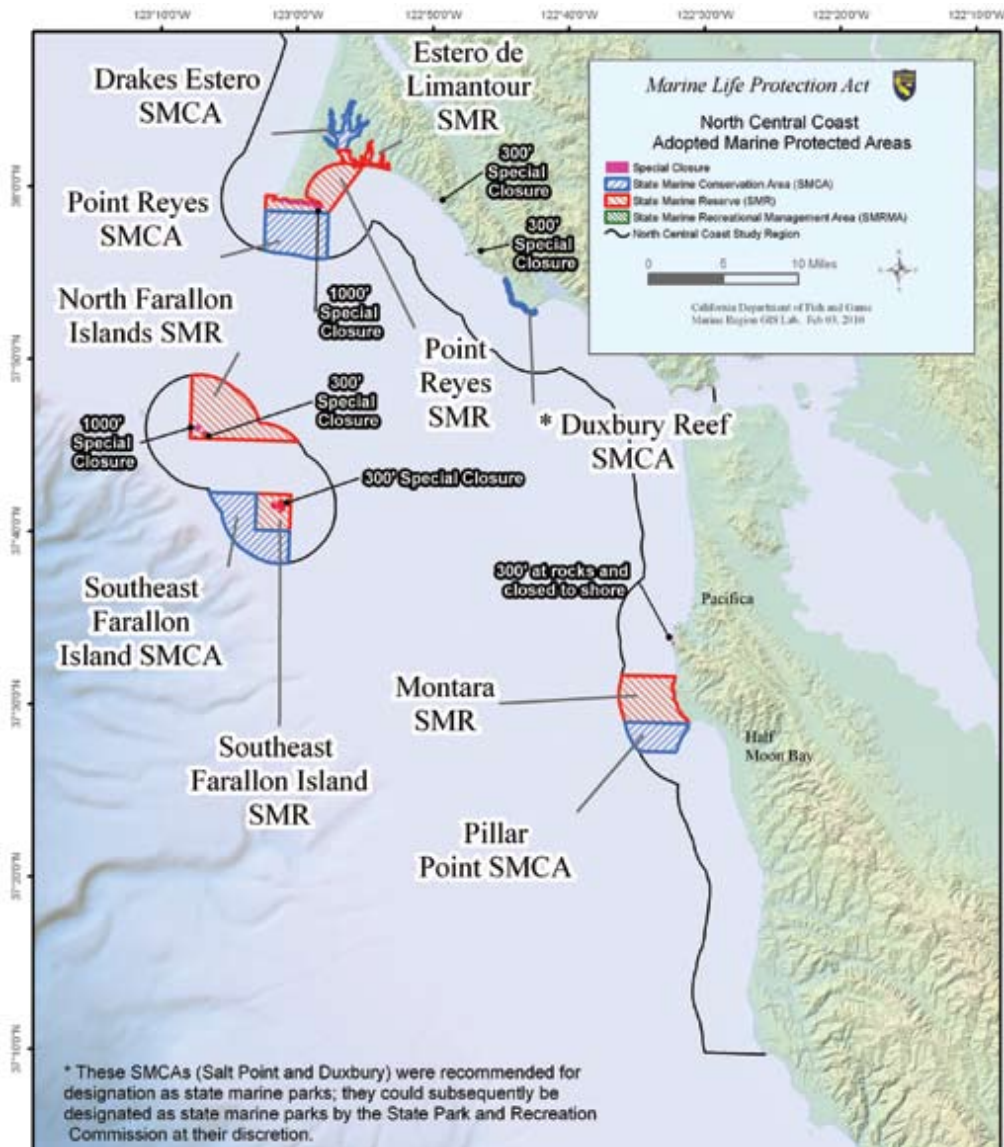
North-Central Coast MPAs (North) Alder Creek to Bodega Head



Maps Not to be Used for Navigation



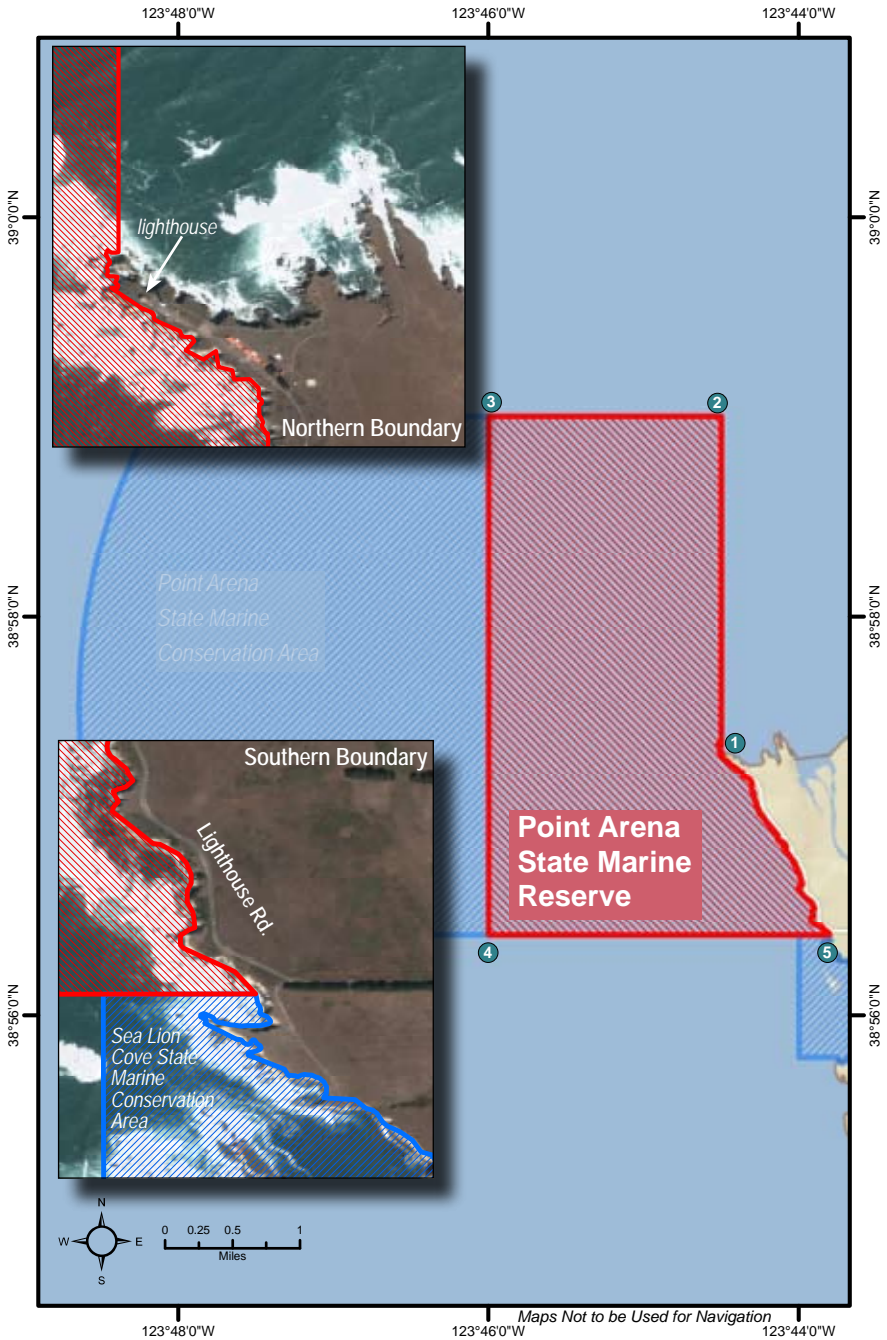
North-Central Coast MPAs (South) Drakes Estero to Half Moon Bay



Maps Not to be Used for Navigation



Point Arena State Marine Reserve





Point Arena State Marine Reserve Boundaries and Regulations *from* California Code of Regulations, Title 14 Section 632, sub-section (b)(6)

(A) Boundary:

This area is bounded by the mean high tide line and straight lines connecting the following points in the order listed:

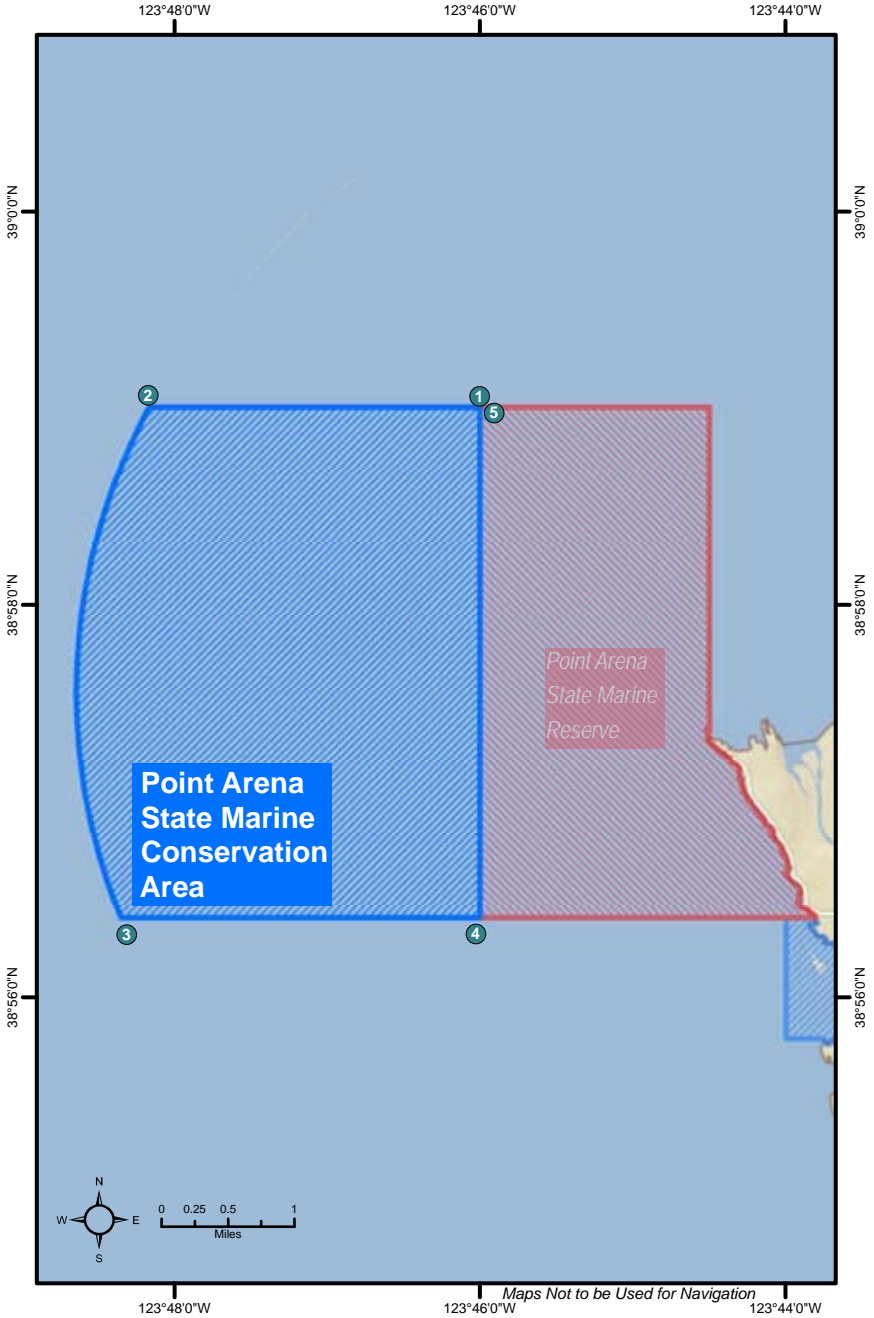
- 38° 57.35'N. lat. 123° 44.50'W. long. ① ;
- 38° 59.00'N. lat. 123° 44.50'W. long. ② ;
- 38° 59.00'N. lat. 123° 46.00'W. long. ③ ;
- 38° 56.40'N. lat. 123° 46.00'W. long. ④ ; and
- 38° 56.40'N. lat. 123° 43.82'W. long. ⑤

(B) Permitted/Prohibited Uses:

Take of all living marine resources is prohibited.



Point Arena State Marine Conservation Area





Point Arena State Marine Conservation Area Boundary and Regulations *from* California Code of Regulations, Title 14 Section 632, sub-section (b)(7)

(A) Boundary:

This area is bounded by straight lines connecting the following points in the order listed except where noted:

- 38° 59.00'N. lat. 123° 46.00'W. long. ①;
- 38° 59.00'N. lat. 123° 48.16'W. long. ②; thence southward along the three nautical mile offshore boundary to
- 38° 56.40'N. lat. 123° 48.35'W. long. ③;
- 38° 56.40'N. lat. 123° 46.00'W. long. ④; and
- 38° 59.00'N. lat. 123° 46.00'W. long. ⑤

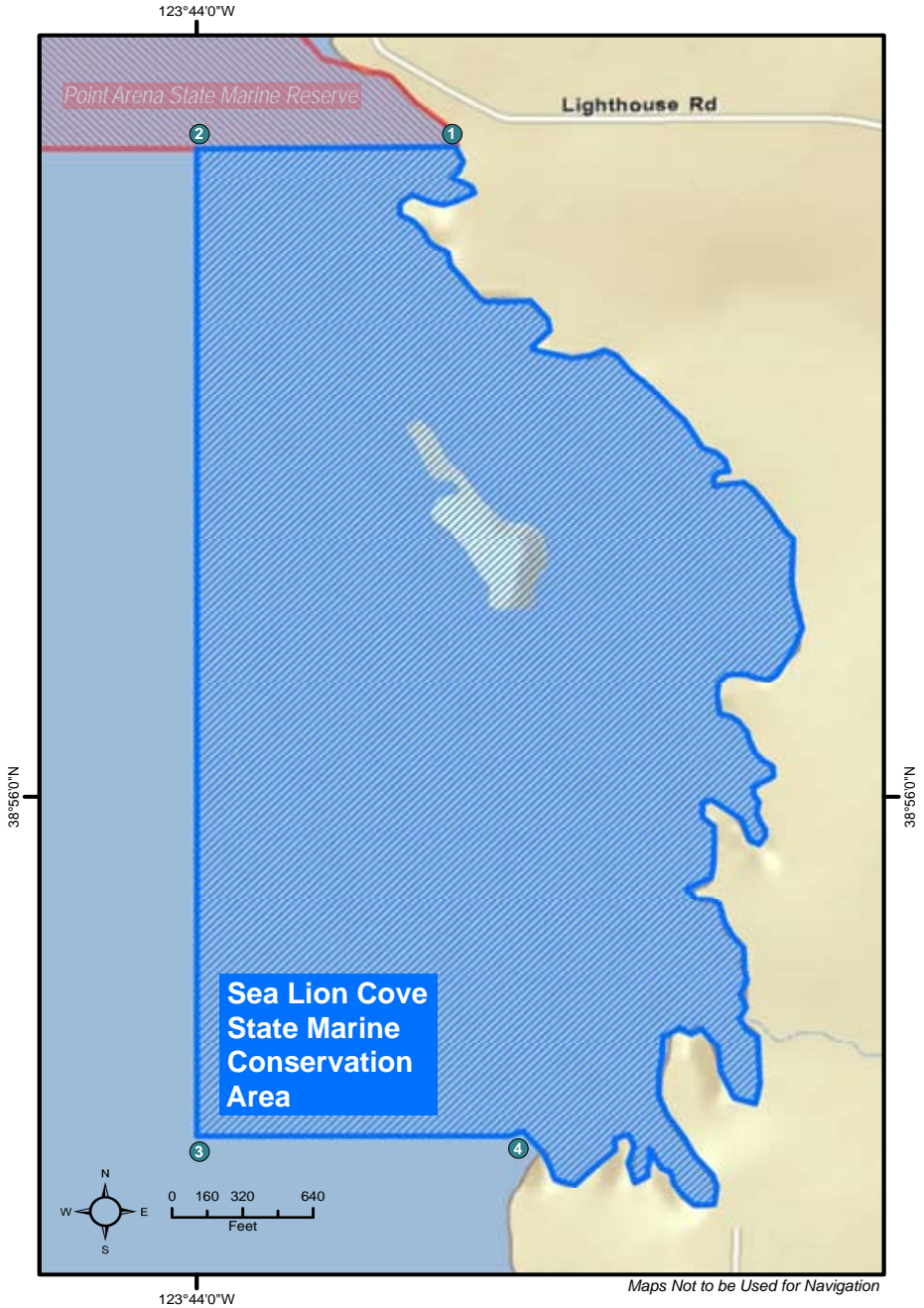
(B) Permitted/Prohibited Uses:

Take of all living marine resources is prohibited except:

1. The recreational take of salmon by trolling is allowed.
2. The commercial take of salmon with troll fishing gear is allowed.



Sea Lion Cove State Marine Conservation Area





Sea Lion Cove State Marine Conservation Area Boundary and Regulations *from* California Code of Regulations, Title 14 Section 632, sub-section (b)(8)

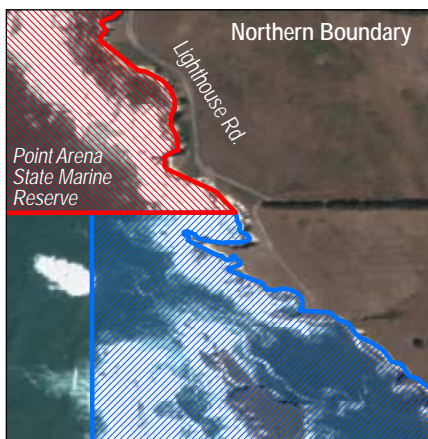
(A) Boundary:

This area is bounded by the mean high tide line and straight lines connecting the following points in the order listed:

- 38° 56.40'N. lat. 123° 43.82'W. long. ❶;
- 38° 56.40'N. lat. 123° 44.00'W. long. ❷;
- 38° 55.79'N. lat. 123° 44.00'W. long. ❸; and
- 38° 55.79'N. lat. 123° 43.74'W. long. ❹

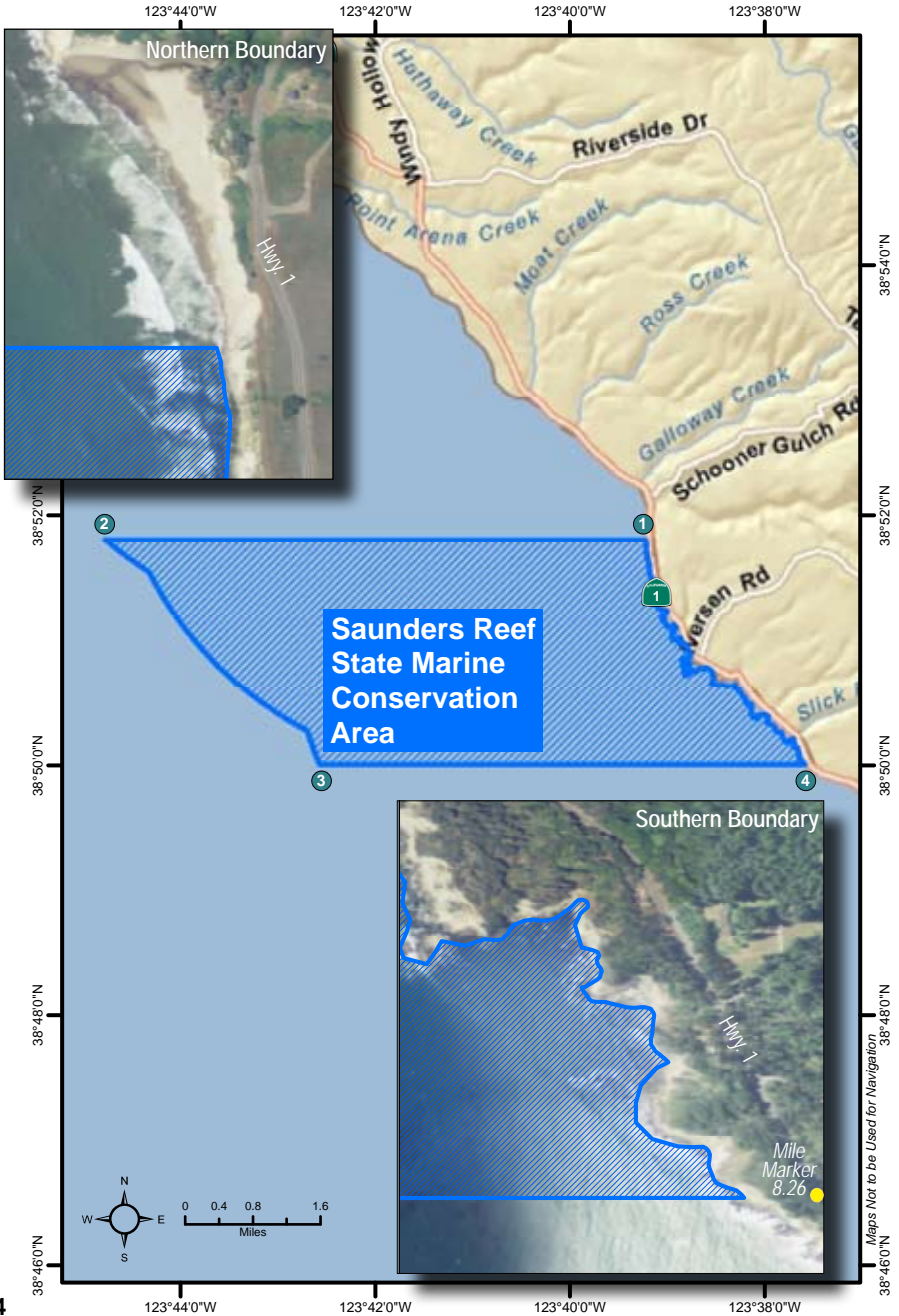
(B) Permitted/Prohibited Uses:

Recreational and commercial take of marine invertebrates and marine aquatic plants is prohibited. Take of all other species is allowed.





Saunders Reef State Marine Conservation Area





Saunders Reef State Marine Conservation Area Boundary and Regulations *from* California Code of Regulations, Title 14 Section 632, sub-section (b)(9)

(A) Boundary

This area is bounded by the mean high tide line and straight lines connecting the following points in the order listed except where noted:

- 38° 51.80'N. lat. 123° 39.23'W. long. ❶;
- 38° 51.80'N. lat. 123° 44.78'W. long. ❷; thence southward along the three nautical mile offshore boundary to
- 38° 50.00'N. lat. 123° 42.58'W. long. ❸; and
- 38° 50.00'N. lat. 123° 37.60'W. long. ❹

(B) Permitted/Prohibited Uses

Take of all living marine resources is prohibited except:

1. The recreational take of salmon by trolling is allowed.
2. The commercial take of salmon with troll fishing gear and urchin is allowed.



Del Mar Landing State Marine Reserve





Del Mar Landing State Marine Reserve Boundary and Regulations *from* California Code of Regulations, Title 14 Section 632, sub-section (b)(10)

(A) Boundary

This area is bounded by the mean high tide line and straight lines connecting the following points in the order listed:

- 38° 44.70'N. lat. 123° 31.00'W. long. ❶;
- 38° 44.20'N. lat. 123° 31.00'W. long. ❷;
- 38° 44.20'N. lat. 123° 30.30'W. long. ❸; and
- 38° 44.43'N. lat. 123° 30.30'W. long. ❹

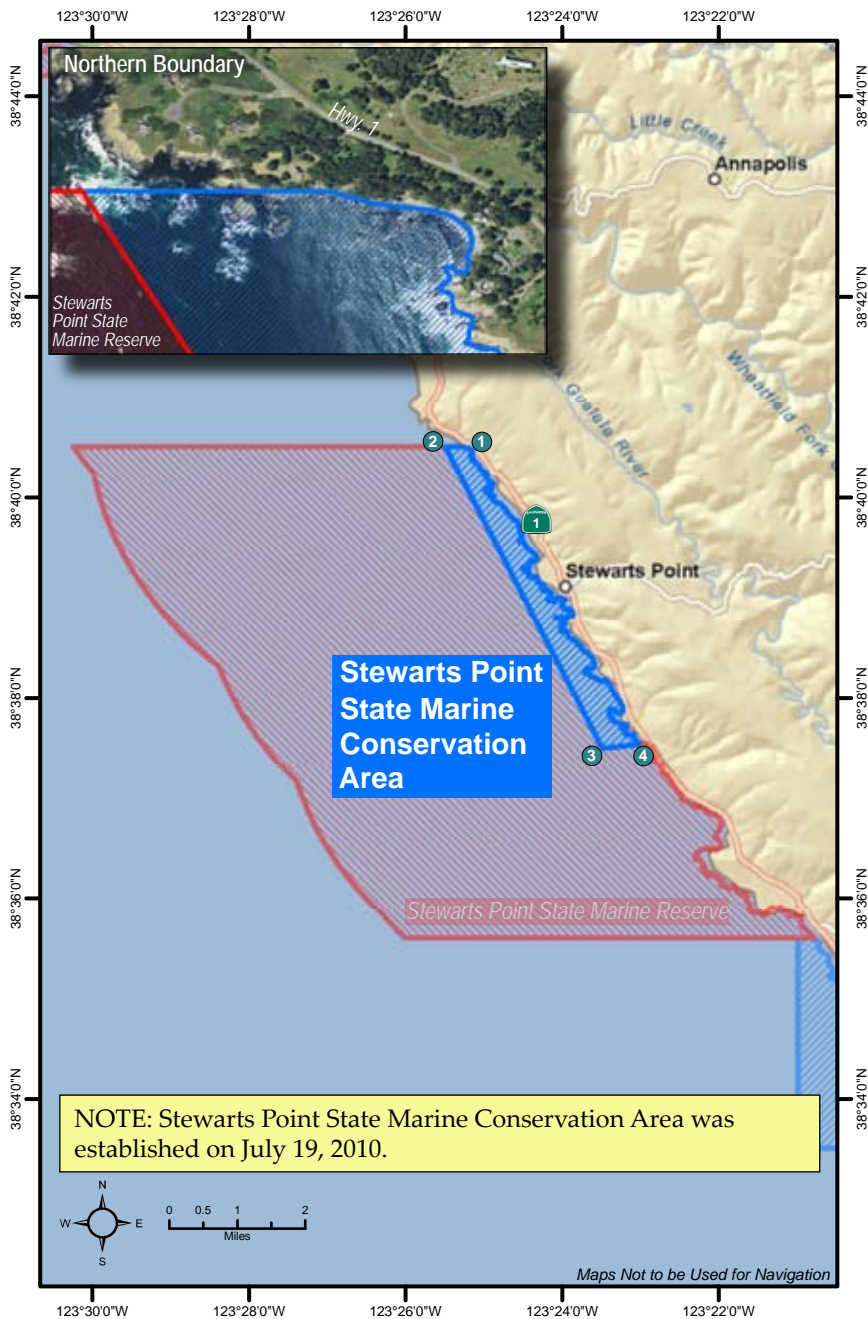
(B) Permitted/Prohibited Uses

Take of all living marine resources is prohibited.





Stewarts Point State Marine Conservation Area





Stewarts Point State Marine Conservation Area Boundary and Regulations *from* California Code of Regulations, Title 14 Section 632, sub-section (b)(11)

(A) Boundary

This area is bounded by the mean high tide line and straight lines connecting the following points in the order listed:

38° 40.500' N. lat. 123° 25.370' W. long. ①;

38° 40.500' N. lat. 123° 25.500' W. long. ②;

38° 37.500' N. lat. 123° 23.500' W. long. ③;

38° 37.535' N. lat. 123° 23.027' W. long. ④

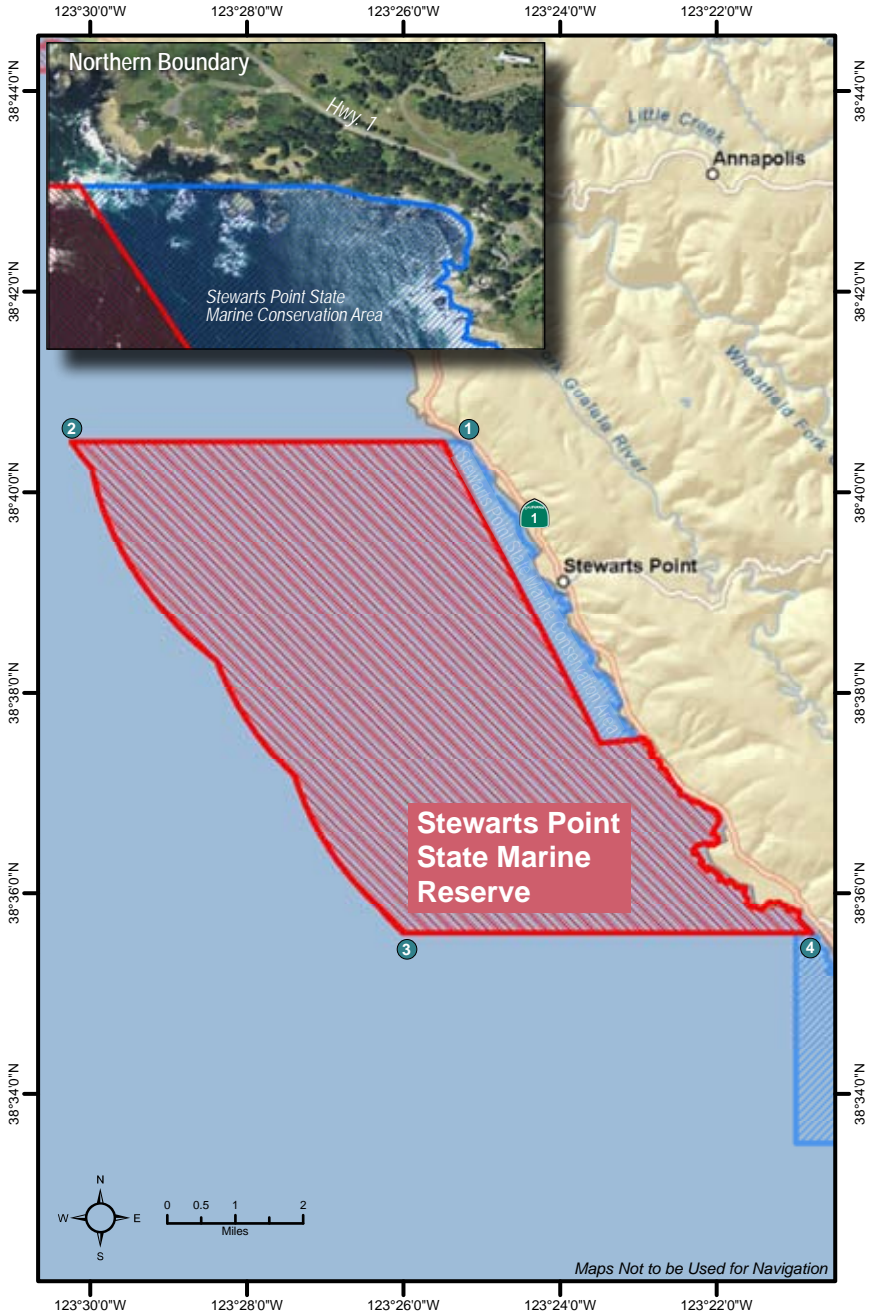
(B) Permitted/Prohibited Uses

Take of all living marine resources is prohibited except the following may be taken recreationally from shore only: marine aquatic plants other than sea palm, marine invertebrates, finfish [as identified in subsection 632(a)(2)] by hook and line, surf smelt by beach net, and species authorized in Section 28.80 of these regulations by handheld dip net.





Stewarts Point State Marine Reserve





Stewarts Point State Marine Reserve Boundary and Regulations *from* California Code of Regulations, Title 14 Section 632, sub-section (b)(12)

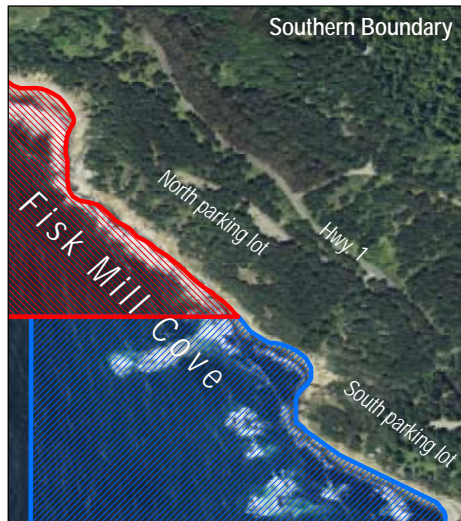
(A) Boundary

This area is bounded by the mean high tide line and straight lines connecting the following points in the order listed except where noted:

38° 40.50'N. lat. 123° 25.37'W. long. ❶;
 38° 40.50'N. lat. 123° 30.24'W. long. ❷; thence southward along
 the three nautical mile offshore boundary to
 38° 35.60'N. lat. 123° 26.01'W. long. ❸; and
 38° 35.60'N. lat. 123° 20.80'W. long. ❹ except that Stewarts
 Point State Marine Conservation Area as described in
 subsection 632(b)(11)(A) is excluded.

(B) Permitted/Prohibited Uses

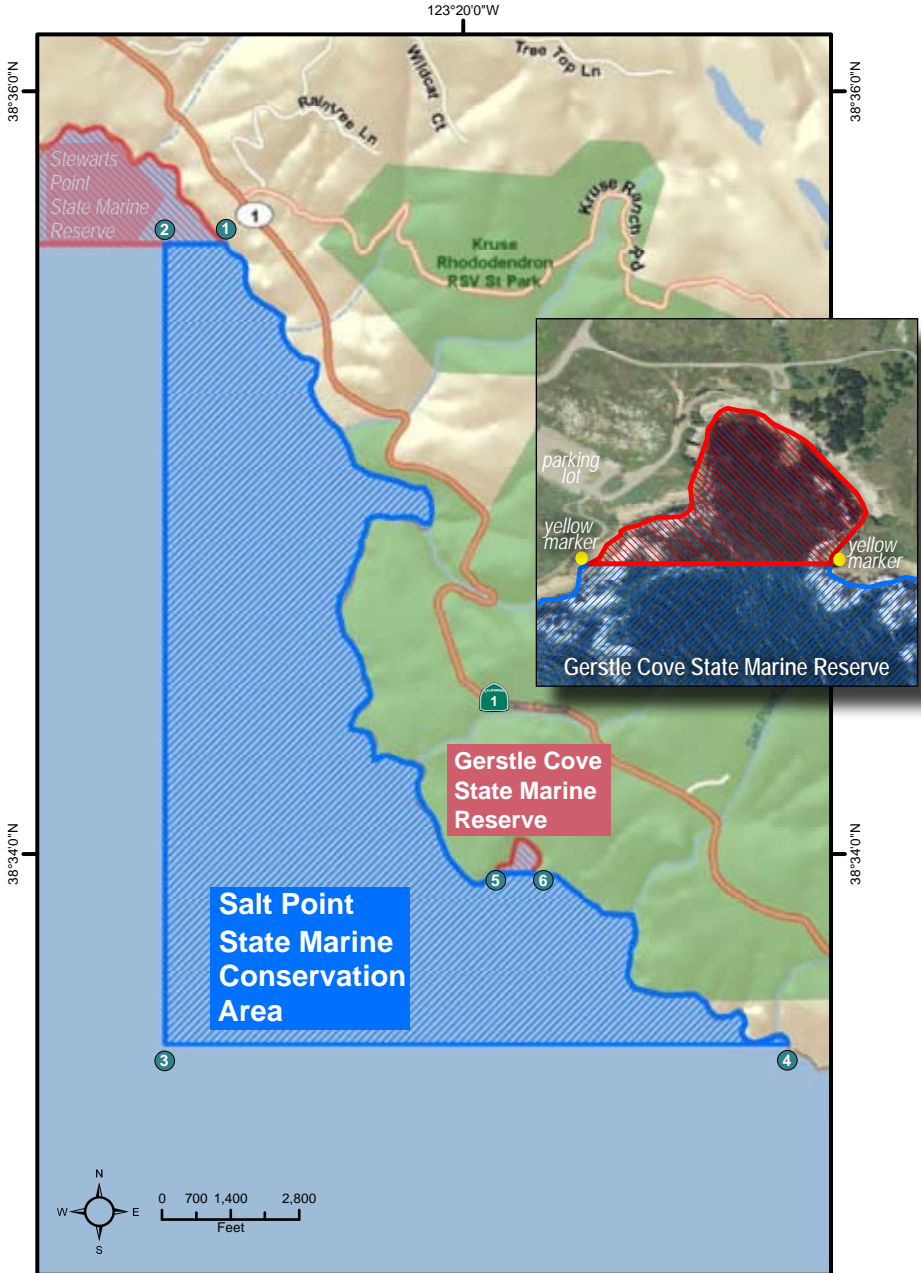
Take of all living marine resources is prohibited.





Salt Point State Marine Conservation Area

Gerstle Cove State Marine Reserve



Maps Not to be Used for Navigation

123°20'0"W



Salt Point State Marine Conservation Area Boundary and Regulations *from* California Code of Regulations, Title 14 Section 632, sub-section (b)(13)

(A) Boundary

This area is bounded by the mean high tide line and straight lines connecting the following points in the order listed:

- 38°35.60'N. lat. 123°20.80'W. long. ①;
- 38°35.60'N. lat. 123°21.00'W. long. ②;
- 38°33.50'N. lat. 123°21.00'W. long. ③;
- 38°33.50'N. lat. 123°18.91'W. long. ④, except that Gerstle Cove is excluded.

(B) Permitted/Prohibited Uses

Take of all living marine resources is prohibited except the recreational take of abalone and finfish.

Gerstle Cove State Marine Reserve Boundary and Regulations *from* California Code of Regulations, Title 14 Section 632, sub-section (b)(14)

(A) Boundary

This area lies within the Salt Point State Marine Conservation Area and is bounded by the mean high tide line and a straight line connecting the following points:

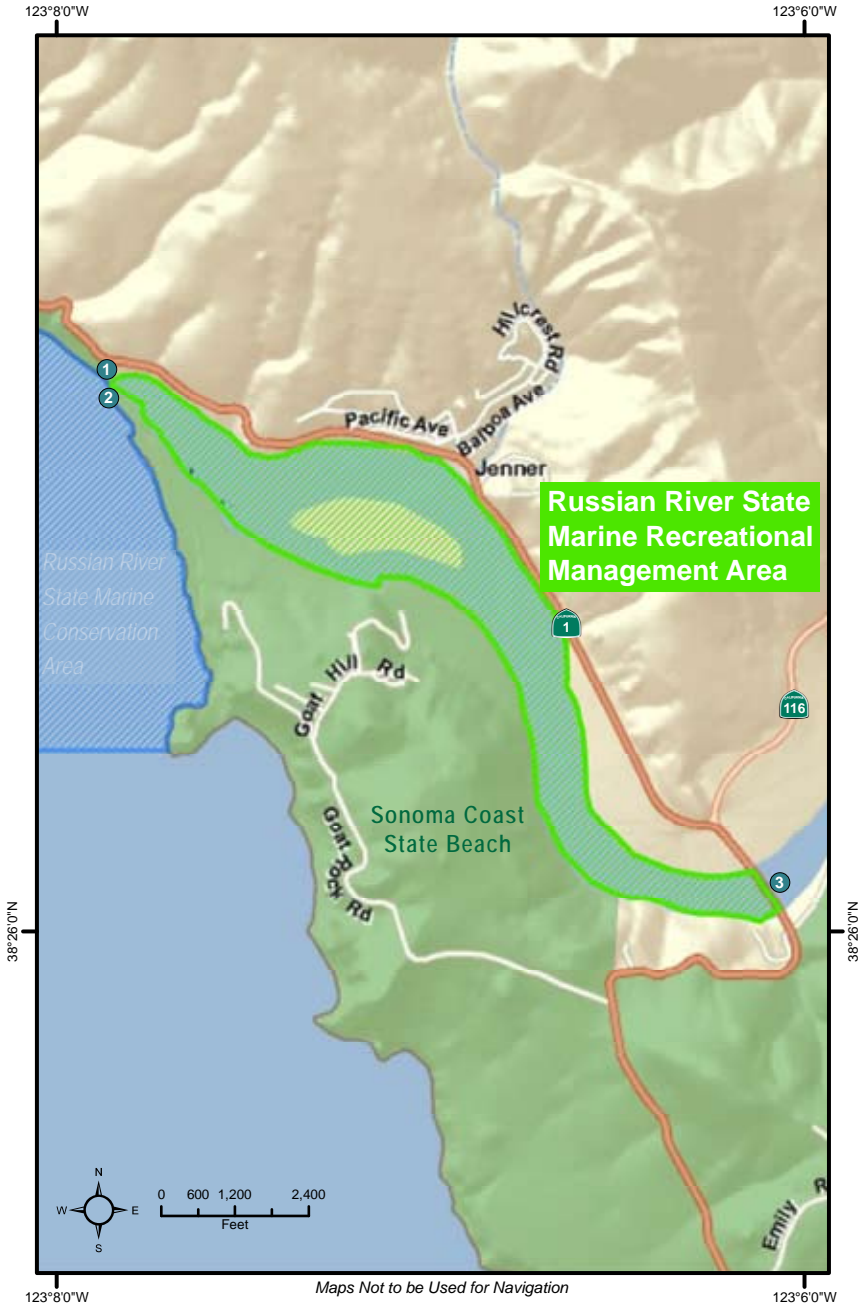
- 38° 33.95'N. lat. 123° 19.92'W. long. ⑤; and
- 38° 33.95'N. lat. 123° 19.76'W. long. ⑥

(B) Permitted/Prohibited Uses

Take of all living marine resources is prohibited.



Russian River State Marine Recreational Management Area



Maps Not to be Used for Navigation



Russian River State Marine Recreational Management Area Boundary and Regulations *from* California Code of Regulations, Title 14 Section 632, sub-section (b)(15)

(A) Boundary

This area includes the waters below the mean high tide line eastward of the mouth of the Russian River estuary defined as a line connecting the following two points:

38° 27.16'N. lat. 123° 07.91'W. long. ❶;

38° 27.01'N. lat. 123° 07.74'W. long. ❷

And westward of the Highway 1 Bridge. ❸

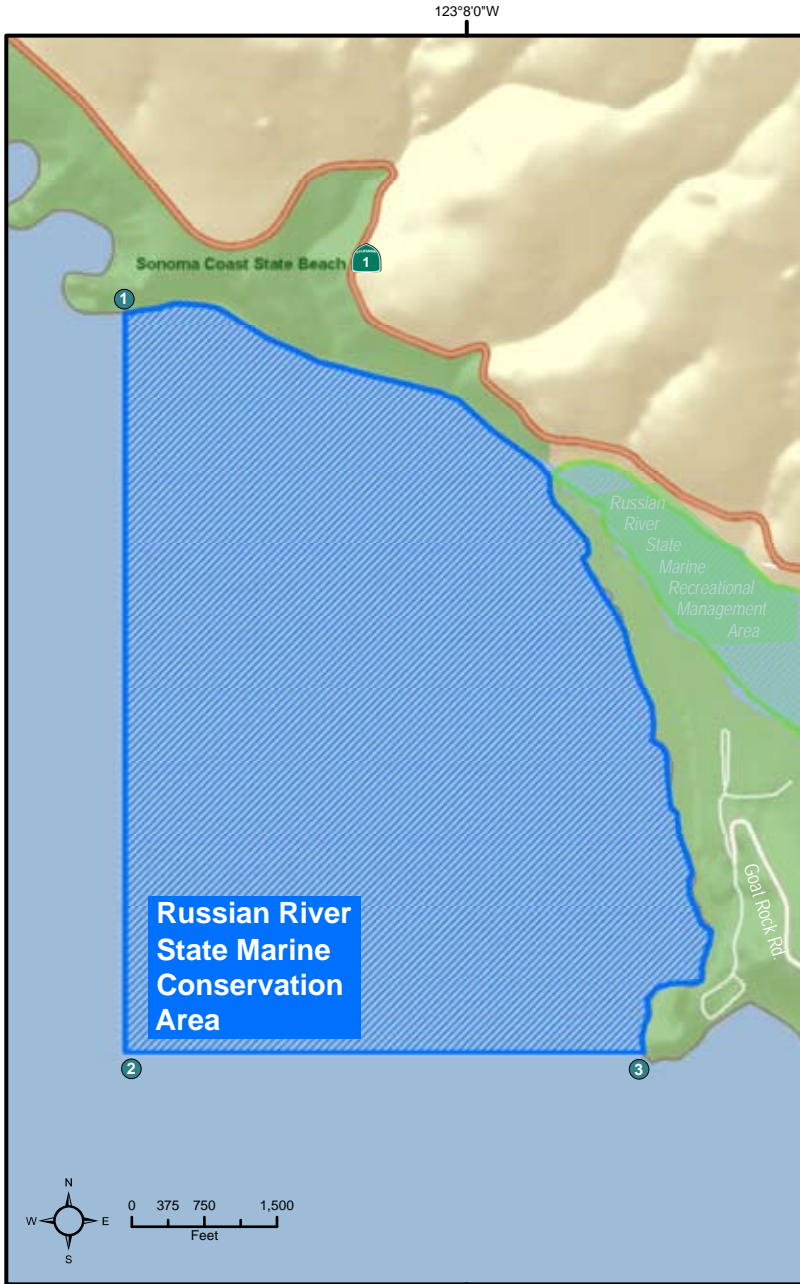
(B) Waterfowl may be taken in accordance with the general waterfowl regulations (sections 502, 550, 551, and 552).

(C) Take of all living marine resources is prohibited.





Russian River State Marine Conservation Area





Russian River State Marine Conservation Area Boundary and Regulations *from* California Code of Regulations, Title 14 Section 632, sub-section (b)(16)

(A) Boundary

This area is bounded by the mean high tide line, the mouth of the Russian River estuary as defined in subsection 632(b)(15)(A), and straight lines connecting the following points in the order listed:

38° 27.38'N. lat. 123° 08.58'W. long. ①;

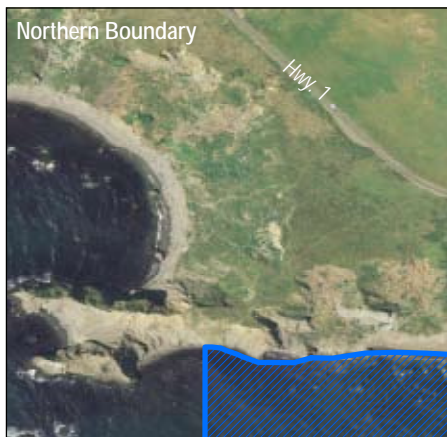
38° 26.38'N. lat. 123° 08.58'W. long. ②;

38° 26.38'N. lat. 123° 07.70'W. long. ③

(B) Permitted/Prohibited Uses

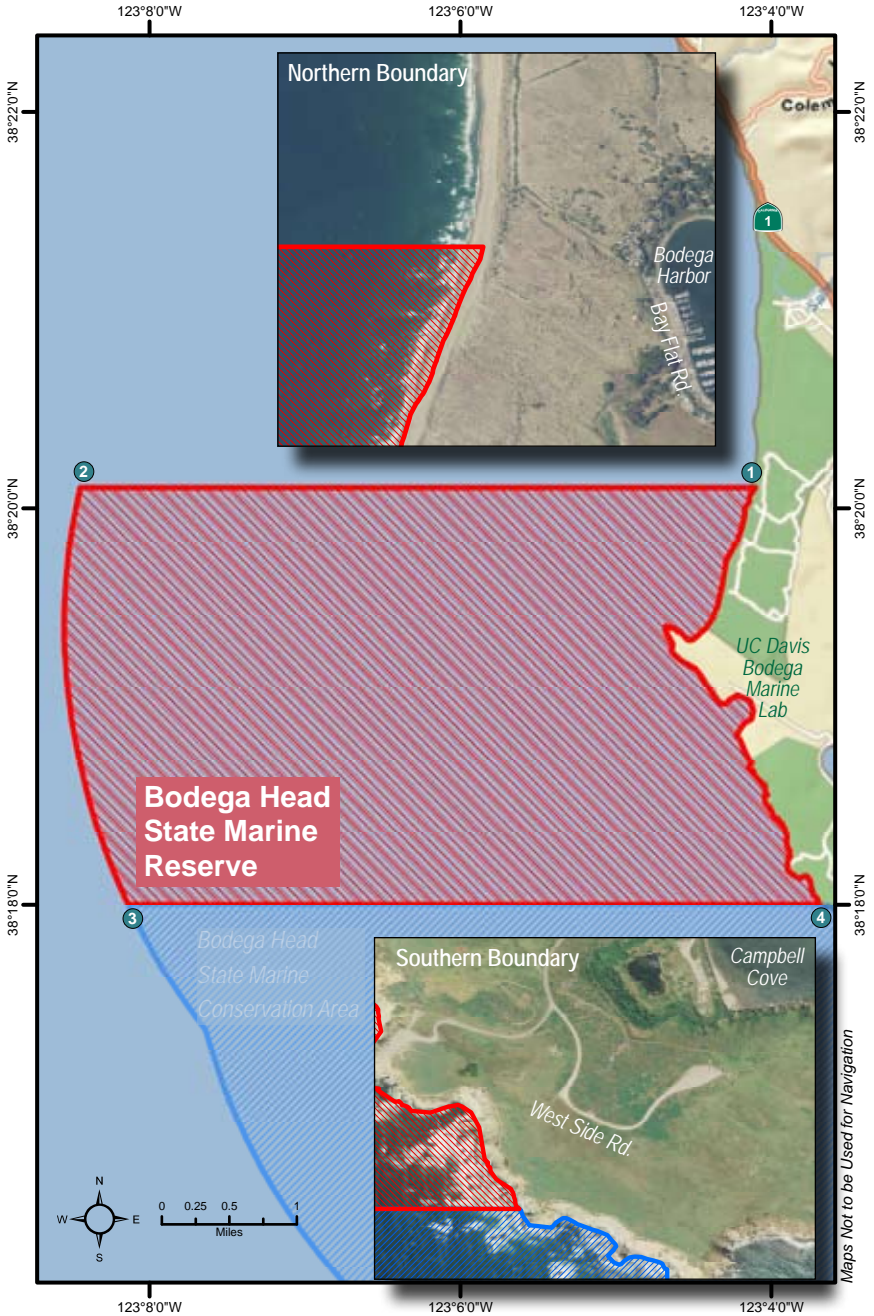
Take of all living marine resources is prohibited except:

1. Only the following species may be taken recreationally:
Dungeness crab by trap, and surf smelt using hand-held dip net or beach net.
2. Only the following species may be taken commercially:
Dungeness crab by trap.





Bodega Head State Marine Reserve





Bodega Head State Marine Reserve Boundary and Regulations *from* California Code of Regulations, Title 14 Section 632, sub-section (b)(17)

(A) This area is bounded by the mean high tide line and straight lines connecting the following points in the order listed except where noted:

- 38° 20.10' N. lat. 123° 04.04' W. long. ①;
- 38° 20.10' N. lat. 123° 08.38' W. long. ②; thence southward along the three nautical mile offshore boundary to
- 38° 18.00' N. lat. 123° 08.08' W. long. ③; and
- 38° 18.00' N. lat. 123° 03.64' W. long. ④

(B) Take of all living marine resources is prohibited.

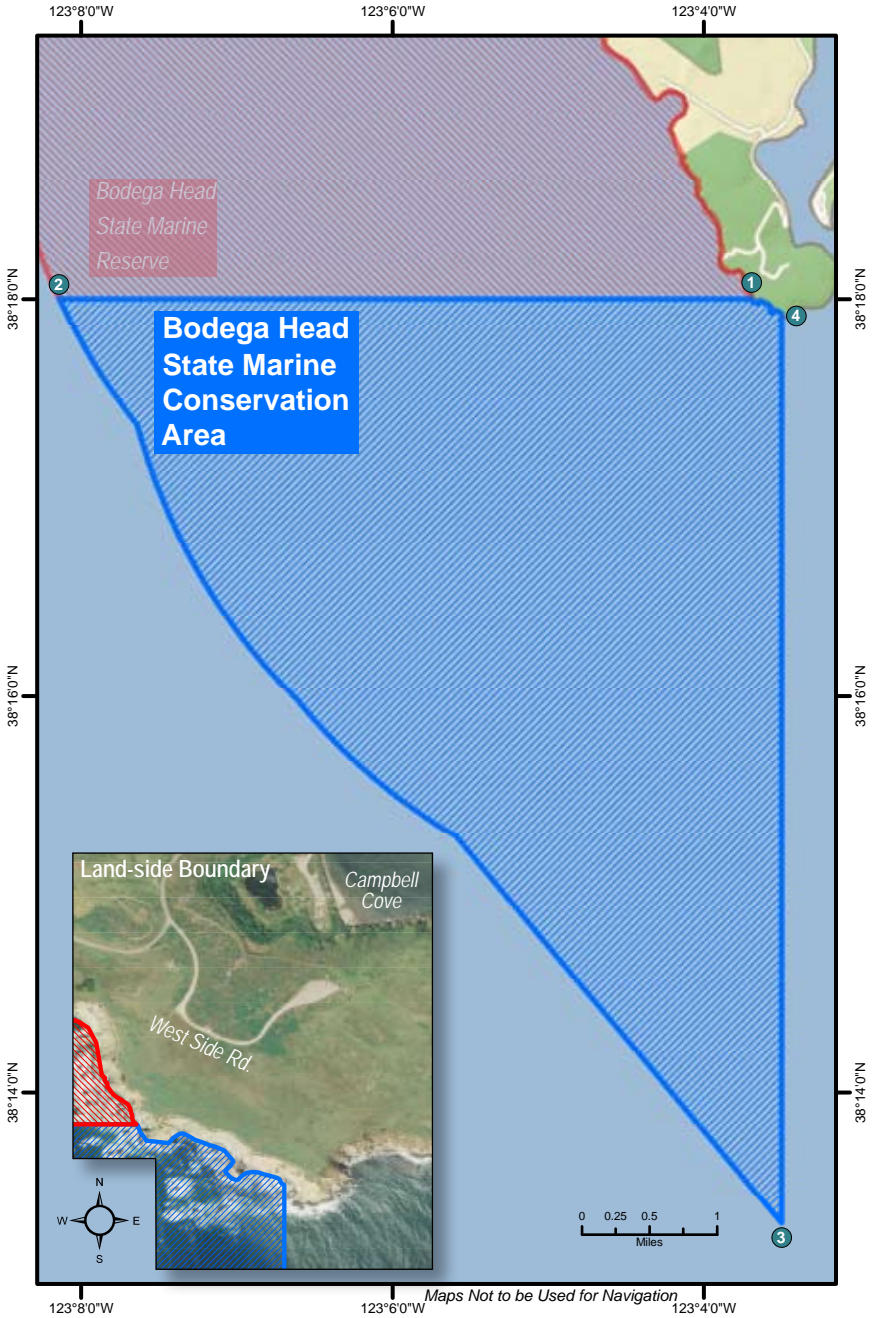
(C) Except as permitted by federal law or emergency caused by hazardous weather, it is unlawful to anchor or moor a vessel in the Bodega Head State Marine Reserve without authorization from the director of the Bodega Marine Laboratory.

(D) The director of the Bodega Marine Laboratory may authorize any person who holds a scientific collector's permit from the department, under the conditions prescribed by the department, to enter the Bodega Head State Marine Reserve to take any finfish [subsection 632(a)(2)], invertebrate, or marine plant or algae for scientific purposes.

(E) The director of the Bodega Marine Laboratory may authorize students enrolled in educational programs conducted by the Bodega Marine Laboratory, under general conditions outlined in a memorandum of understanding with the department, to enter the Bodega Head State Marine Reserve to take any finfish [subsection 632(a)(2)], invertebrate, or marine plant or algae for educational and study purposes.



Bodega Head State Marine Conservation Area





Bodega Head State Marine Conservation Area Boundary and Regulations *from* California Code of Regulations, Title 14 Section 632, sub-section (b)(18)

(A) Boundary

This area is bounded by the mean high tide line and straight lines connecting the following points in the order listed except where noted:

- 38° 18.00'N. lat. 123° 03.64'W. long. ①;
- 38° 18.00'N. lat. 123° 08.08'W. long. ②; thence southward along the three nautical mile offshore boundary to
- 38° 13.34'N. lat. 123° 03.51'W. long. ③; and
- 38° 17.93'N. lat. 123° 03.51'W. long. ④

(B) Permitted/Prohibited Uses

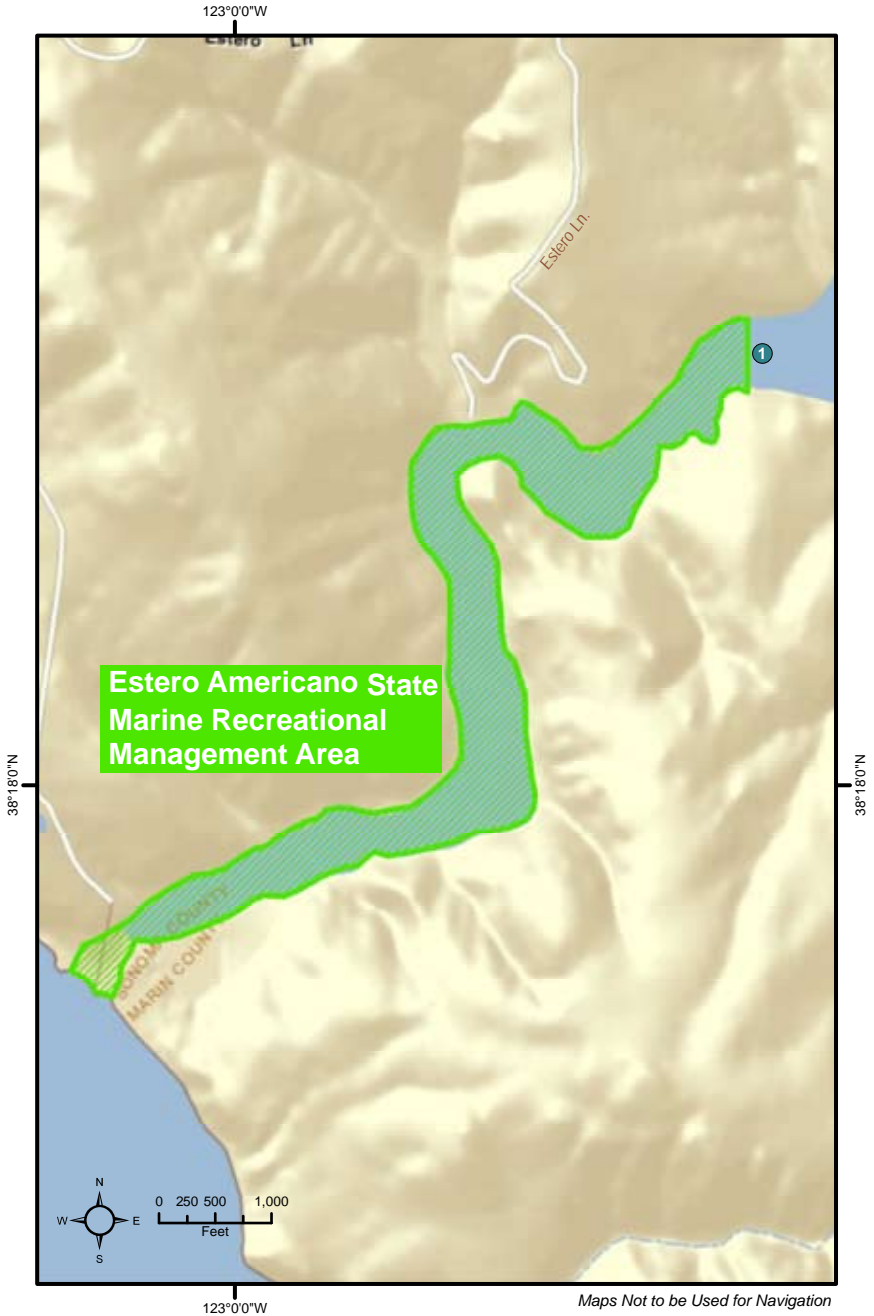
Take of all living marine resources is prohibited except:

1. The recreational take of pelagic finfish* by trolling, Dungeness crab by trap, and market squid by hand-held dip net, are allowed.
2. The commercial take of pelagic finfish* by troll fishing gear or round haul net, Dungeness crab by trap, and market squid by round haul net, are allowed.

*Pelagic finfish, for the purpose of this guidebook, are defined as: northern anchovy (*Engraulis mordax*), barracudas (*Sphyraena* spp.) billfishes (family Istiophoridae), dolphinfish (*Coryphaena hippurus*), Pacific herring (*Clupea pallasii*), jack mackerel (*Trachurus symmetricus*), Pacific mackerel (*Scomber japonicus*), salmon (*Oncorhynchus* spp.), Pacific sardine (*Sardinops sagax*), blue shark (*Prionace glauca*), salmon shark (*Lamna ditropis*), shortfin mako shark (*Isurus oxyrinchus*), thresher sharks (*Alopias* spp.), swordfish (*Xiphias gladius*), tunas (family Scombridae), and yellowtail (*Seriola lalandi*). The commercial take of marlin is not allowed.



Estero Americano State Marine Recreational Management Area





Estero Americano State Marine Recreational Management Area Boundary and Regulations *from* California Code of Regulations, Title 14 Section 632, sub-section (b)(19)

(A) Boundary

This area includes the waters below the mean high tide line within Estero Americano westward of longitude 122° 59.25'W. ①

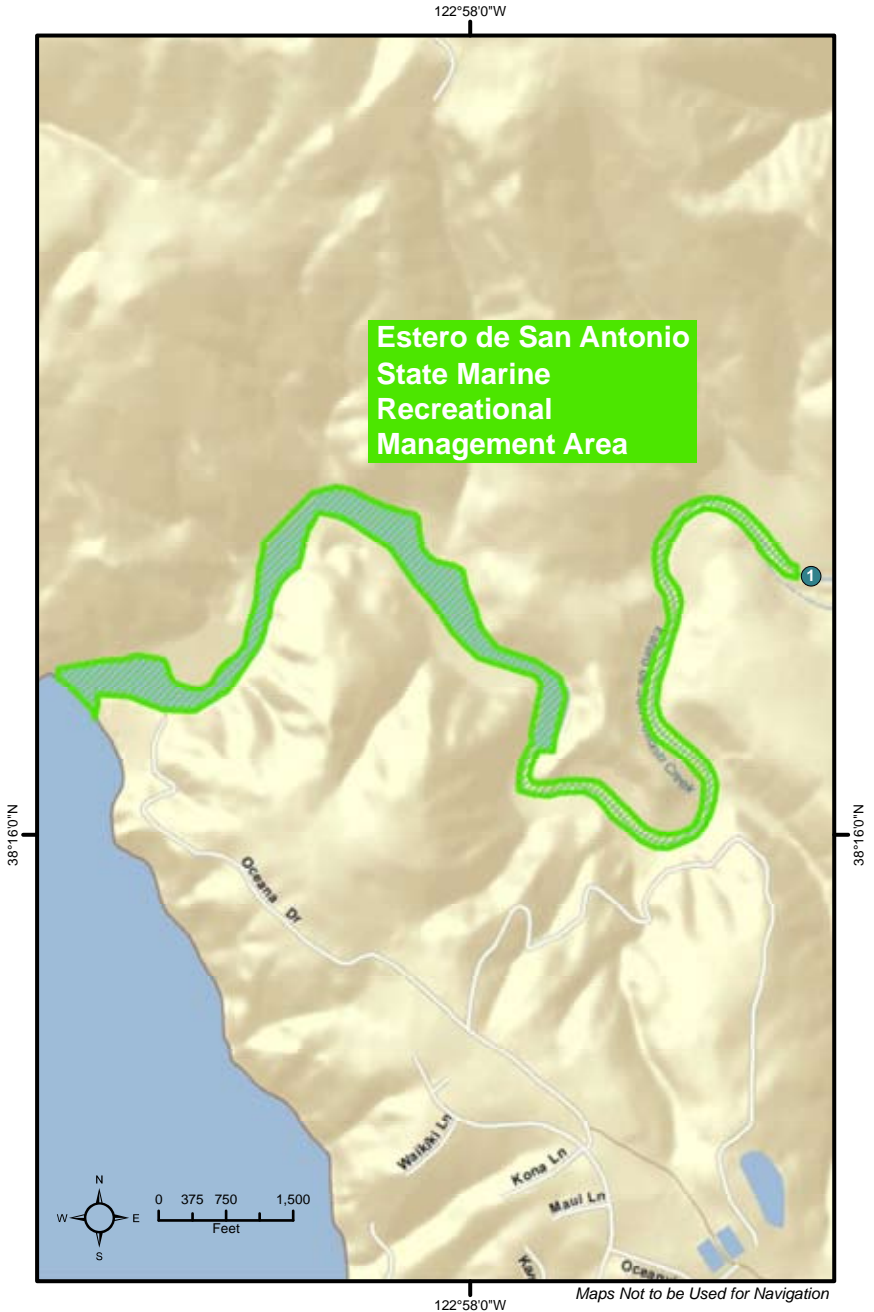
(B) Waterfowl may be taken in accordance with the general waterfowl regulations (sections 502, 550, 551, and 552).

(C) Take of all living marine resources is prohibited.





Estero de San Antonio State Marine Recreational Management Area



Maps Not to be Used for Navigation



Estero De San Antonio State Marine Recreational Management Area Boundary and Regulations *from* California Code of Regulations, Title 14 Section 632, sub-section (b)(20)

(A) Boundary

This area includes the waters below the mean high tide line within Estero de San Antonio westward of longitude 122° 57.40'W. ①

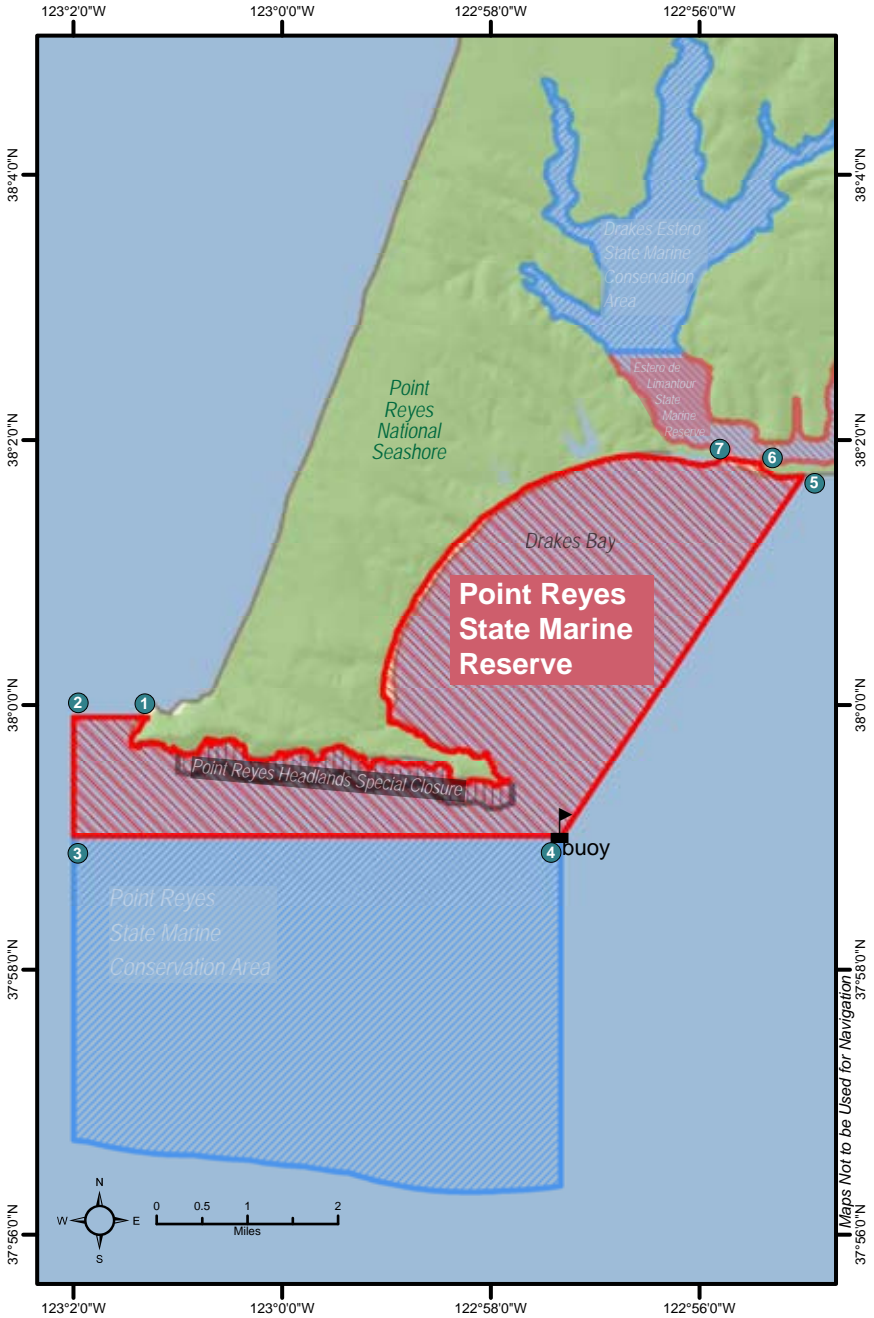
(B) Waterfowl may be taken in accordance with the general waterfowl regulations (sections 502, 550, 551, and 552).

(C) Take of all living marine resources is prohibited.





Point Reyes State Marine Reserve





Point Reyes State Marine Reserve Boundary and Regulations *from* California Code of Regulations, Title 14 Section 632, sub-section (b)(21)

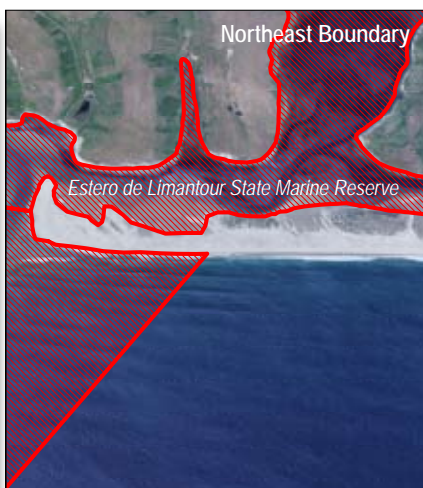
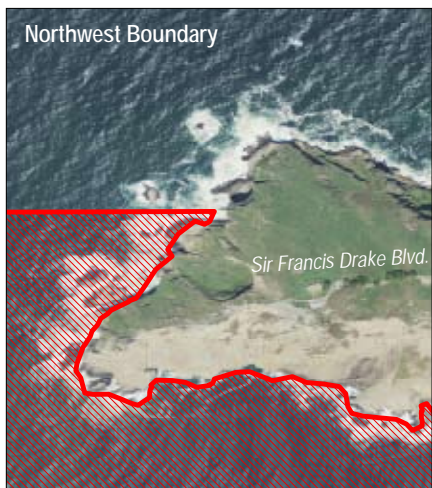
(A) Boundary

This area is bounded by the mean high tide line and straight lines connecting the following points in the order listed:

- 37° 59.90'N. lat. 123° 01.29'W. long. ①;
 37° 59.90'N. lat. 123° 02.00'W. long. ②;
 37° 59.00'N. lat. 123° 02.00'W. long. ③;
 37° 59.00'N. lat. 122° 57.34'W. long. ④; and
 38° 01.75'N. lat. 122° 55.00'W. long. ⑤; thence westward along the
 mean high tide line onshore boundary to
 38° 01.783'N. lat. 122° 55.286'W. long. ⑥; and
 38° 01.954'N. lat. 122° 56.451'W. long. ⑦

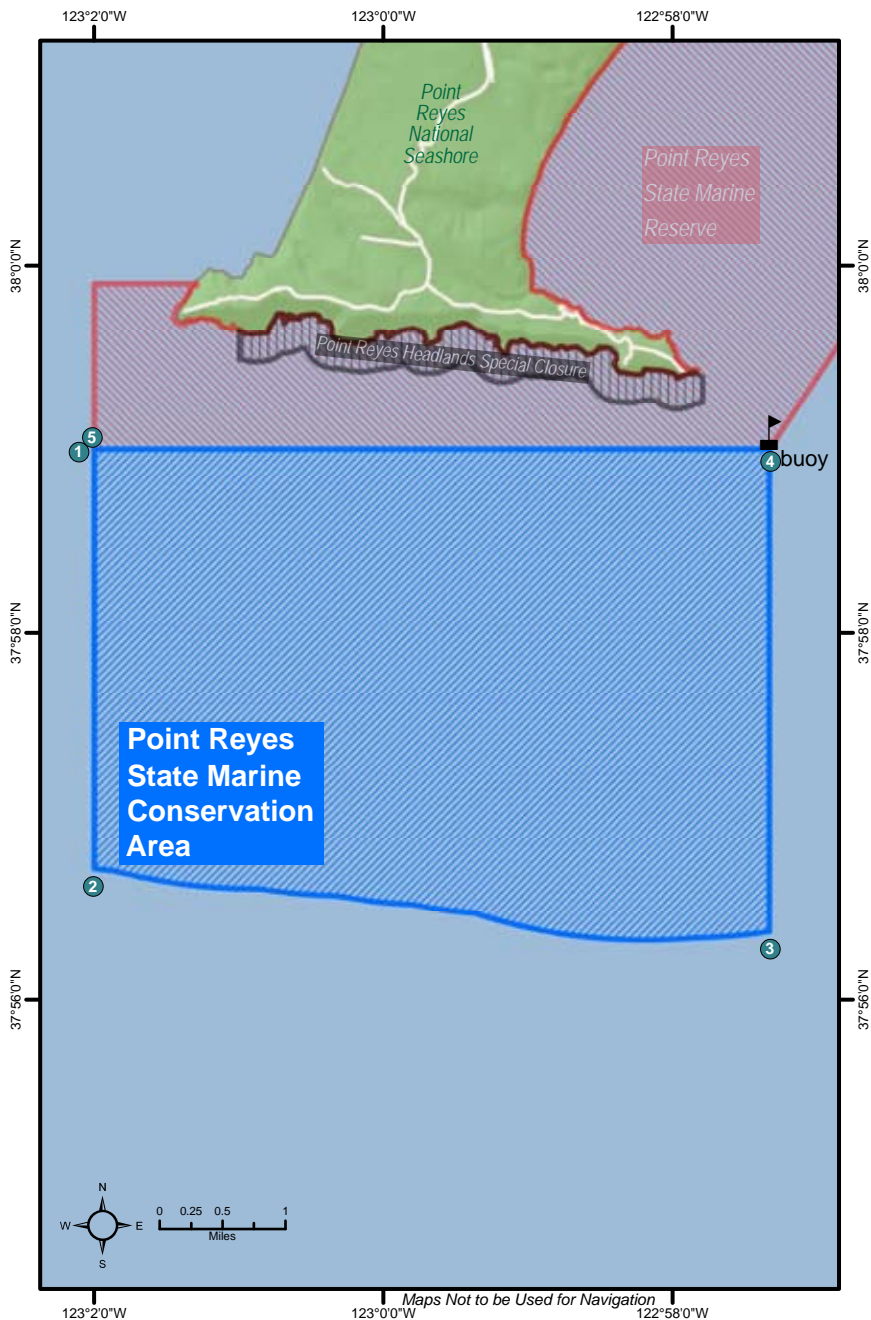
(B) Permitted/Prohibited Uses

Take of all living marine resources is prohibited.





Point Reyes State Marine Conservation Area





Point Reyes State Marine Conservation Area Boundary and Regulations *from* California Code of Regulations, Title 14 Section 632, sub-section (b)(22)

(A) Boundary

This area is bounded by straight lines connecting the following points in the order listed except where noted:

- 37° 59.00'N. lat. 123° 02.00'W. long. ❶;
- 37° 56.71'N. lat. 123° 02.00'W. long. ❷; thence eastward along the three nautical mile offshore boundary to
- 37° 56.36'N. lat. 122° 57.34'W. long. ❸;
- 37° 59.00'N. lat. 122° 57.34'W. long. ❹; and
- 37° 59.00'N. lat. 123° 02.00'W. long. ❺

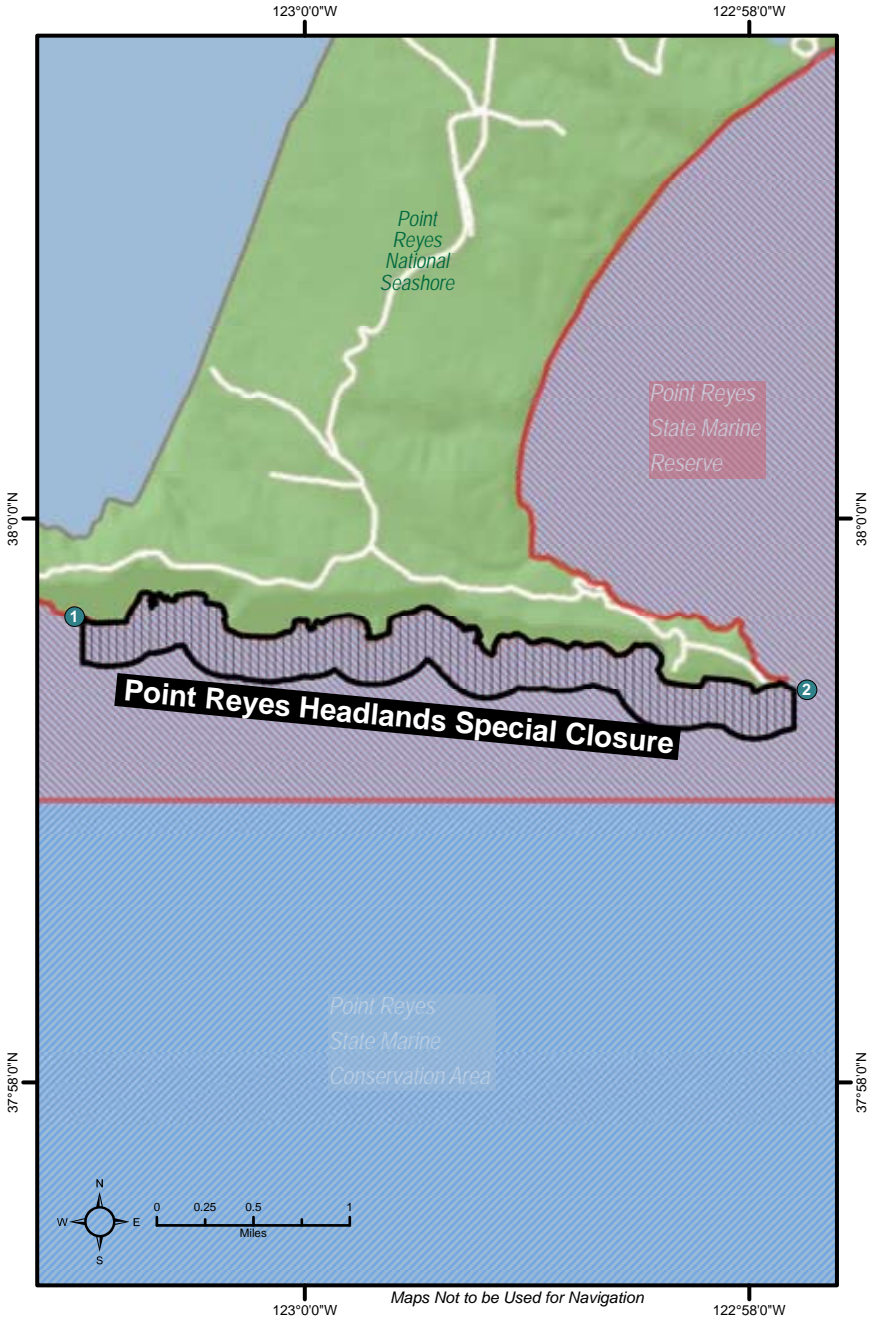
(B) Permitted/Prohibited Uses

Take of all living marine resources is prohibited except:

1. The recreational take of salmon by trolling and Dungeness crab by trap is allowed.
2. The commercial take of salmon with troll fishing gear and Dungeness crab by trap is allowed.



Point Reyes Headlands Special Closure





Point Reyes Headlands Special Closure Boundary and Regulations *from* California Code of Regulations, Title 14 Section 632, sub-section (b)(23)

Special restrictions on boating and access apply to the Point Reyes headlands as follows.

(A) A special closure is designated on the south side of the Point Reyes headlands from the mean high tide line to a distance of 1,000 feet seaward of the mean lower low tide line of any shoreline between lines extending due south from each of the following two points:

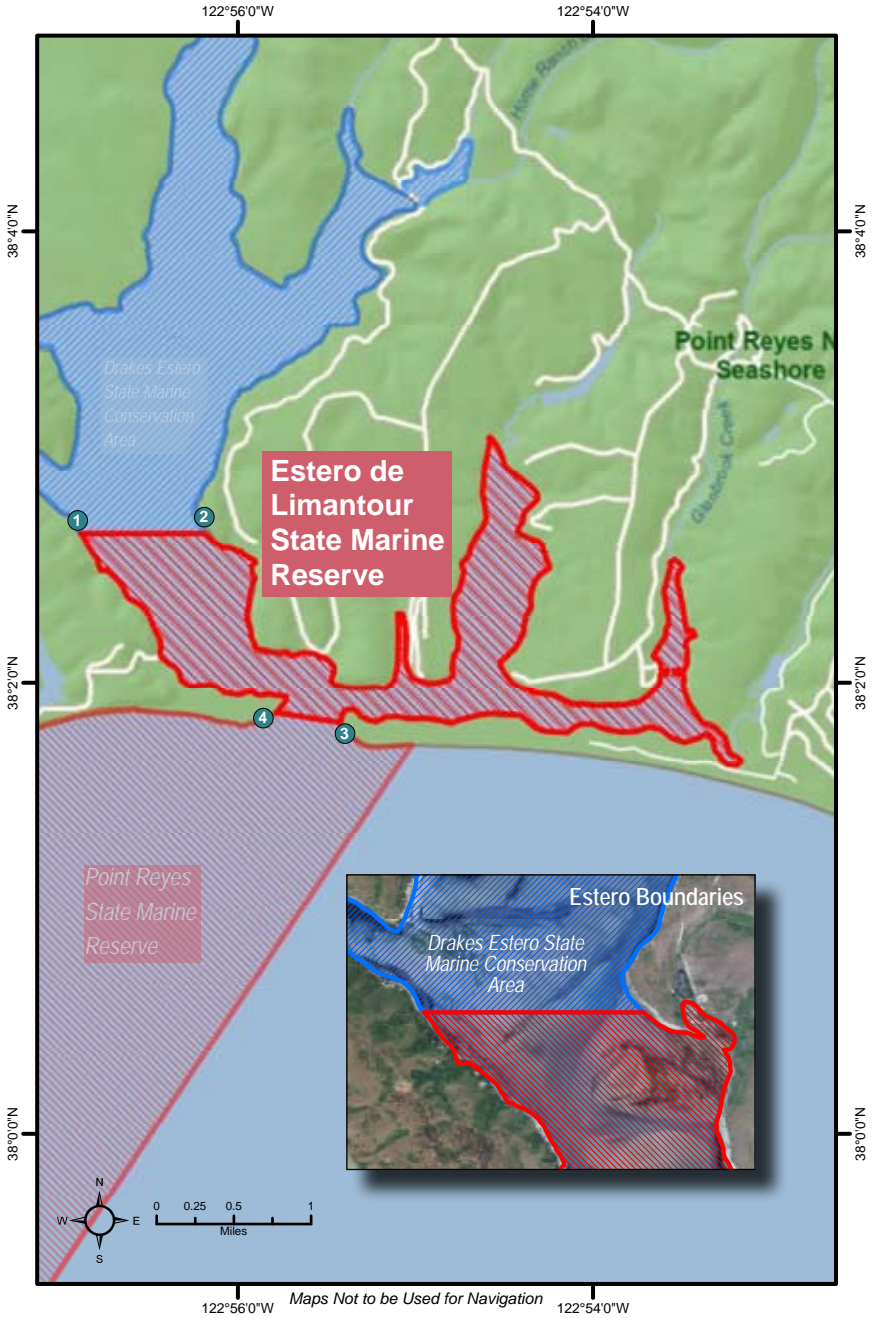
37° 59.65'N. lat. 123° 01.00'W. long. ①; and

37° 59.39'N. lat. 122° 57.80'W. long. ②

(B) No person except department employees or employees of the United States Fish and Wildlife Service, National Park Service, or United States Coast Guard, in performing their official duties, or unless permission is granted by the department, shall enter this area at any time.



Estero de Limantour State Marine Reserve





Estero de Limantour State Marine Reserve Boundary and Regulations *from* California Code of Regulations, Title 14 Section 632, sub-section (b)(24)

(A) Boundary

This area consists of waters below the mean high tide line within Estero de Limantour and within Drakes Estero, southward of a line connecting the following two points:

38° 02.66'N. lat. 122° 56.89'W. long. ❶; and

38° 02.66'N. lat. 122° 56.15'W. long. ❷

And northward of a line connecting the following two points:

38° 01.783'N. lat. 122° 55.286'W. long. ❸; and

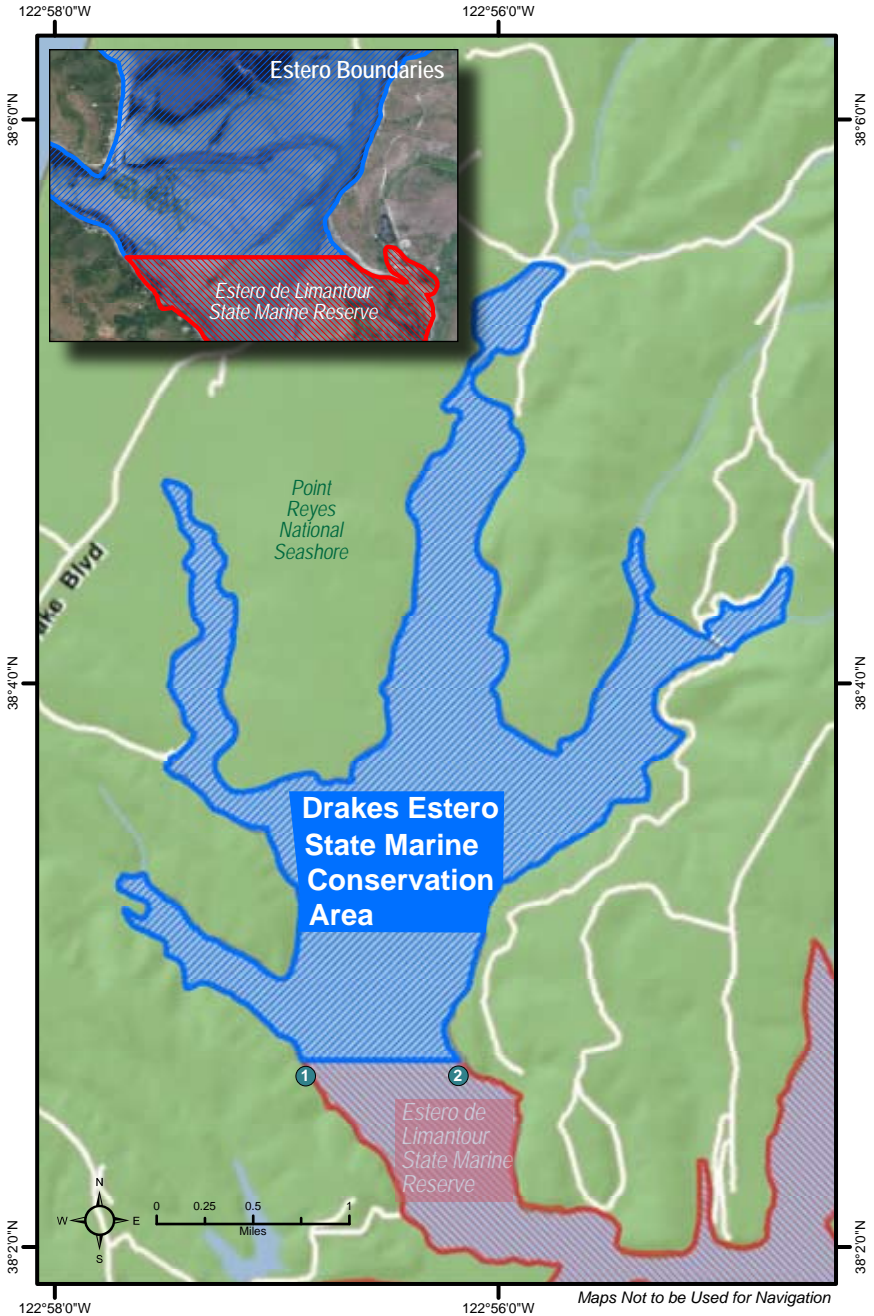
38° 01.954'N. lat. 122° 56.451'W. long. ❹

(B) Permitted/Prohibited Uses

Take of all living marine resources is prohibited.



Drakes Estero State Marine Conservation Area





Drakes Estero State Marine Conservation Area Boundary and Regulations *from* California Code of Regulations, Title 14 Section 632, sub-section (b)(25)

(A) Boundary

This area includes the waters below the mean high tide line within Drakes Estero northward of a line connecting the following two points:

- 38° 02.66'N. lat. 122° 56.89'W. long. ①; and
- 38° 02.66'N. lat. 122° 56.15'W. long. ②

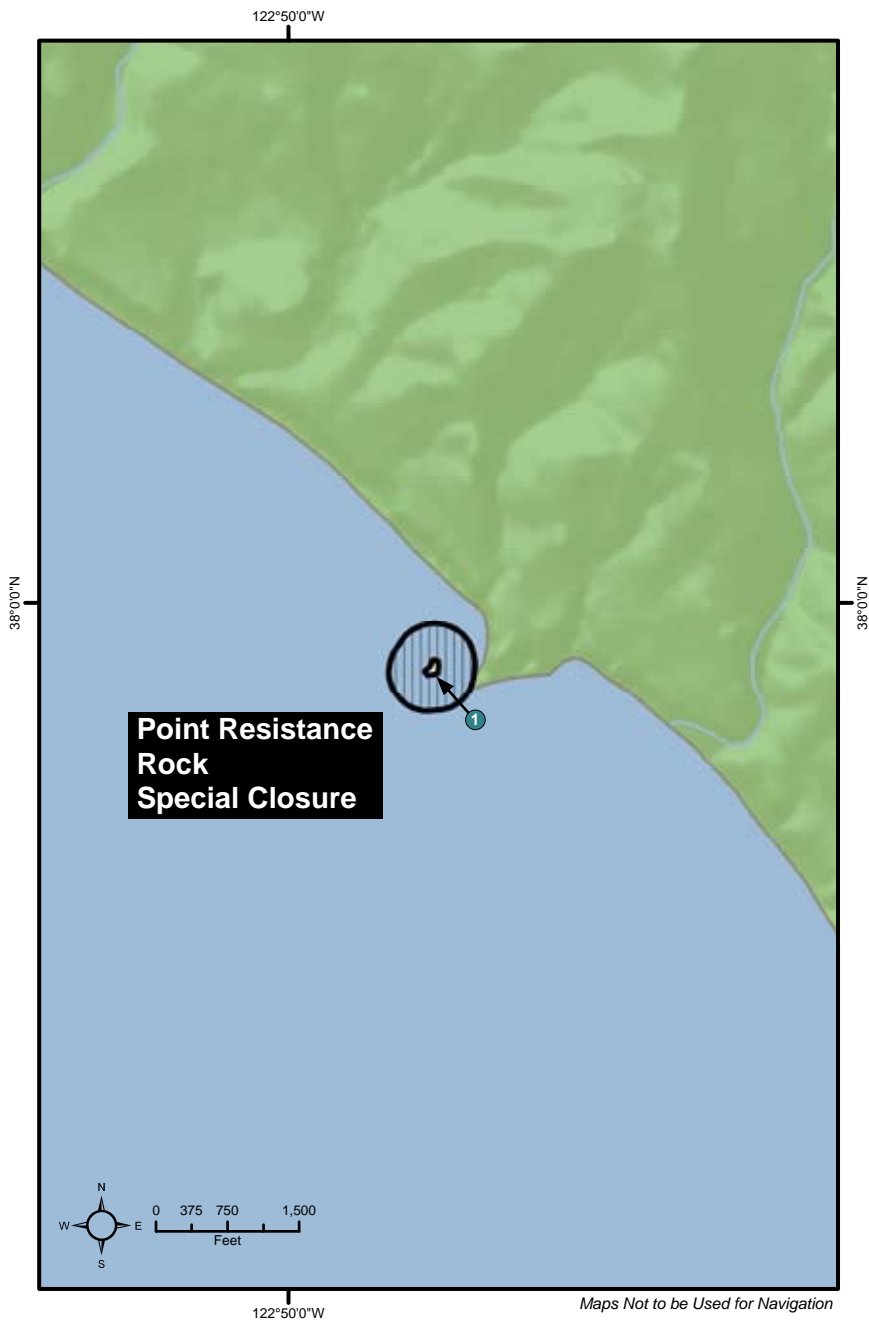
(B) Permitted/Prohibited Uses

Take of all living marine resources is prohibited except:

1. The recreational take of clams; and
2. Aquaculture of shellfish, pursuant to a valid State water bottom lease and stocking permit.



Point Resistance Rock Special Closure





Point Resistance Rock Special Closure Boundary and Regulations *from* California Code of Regulations, Title 14 Section 632, sub-section (b)(26)

Special restrictions on boating and access apply to Point Resistance Rock as follows:

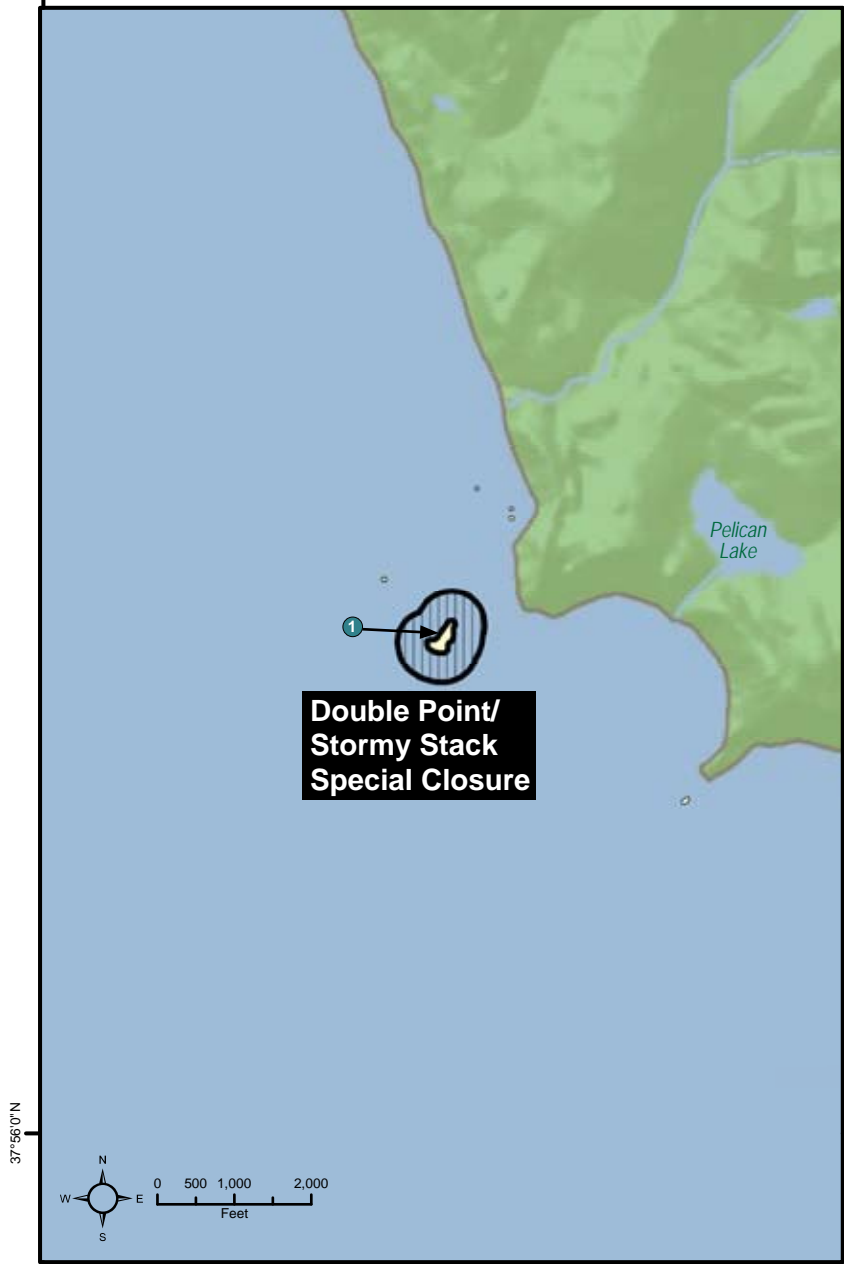
(A) A special closure is designated from the mean high tide line to a distance of 300 feet seaward of the mean lower low tide line of any shoreline of Point Resistance Rock, located in the vicinity of 37° 59.92'N. lat. 122° 49.75'W. long. ①

(B) No person except department employees or employees of the United States Fish and Wildlife Service, National Park Service, or United States Coast Guard, in performing their official duties, or unless permission is granted by the department, shall enter this area at any time.



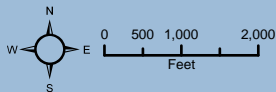
Double Point/Stormy Stack Special Closure

122°48'0"W



37°56'0"N


37°56'0"N





Double Point/Stormy Stack Special Closure Boundary and Regulations *from* California Code of Regulations, Title 14 Section 632, sub-section (b)(27)

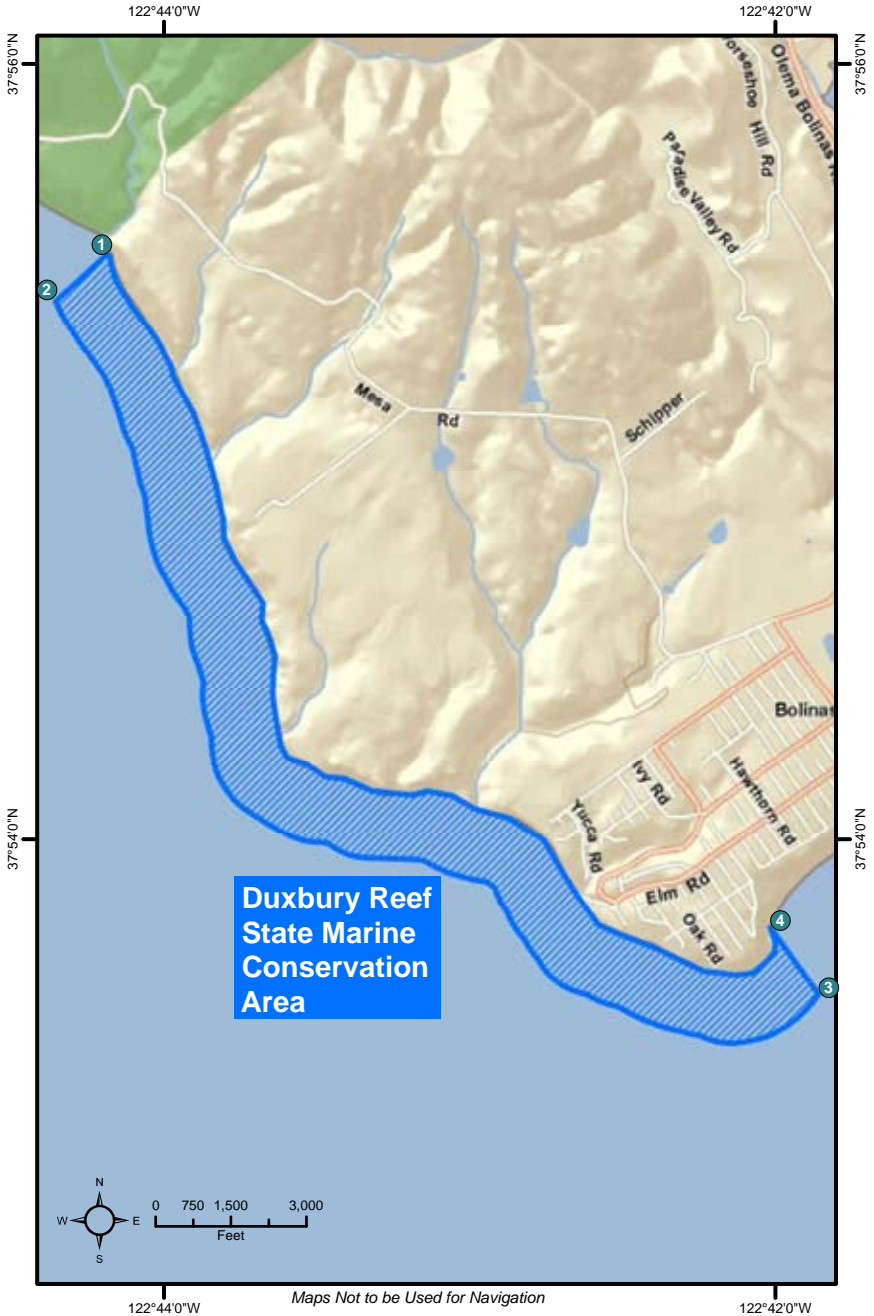
Special restrictions on boating and access apply to Stormy Stack Rock as follows.

(A) A special closure is designated from the mean high tide line to a distance of 300 feet seaward of the mean lower low tide line of any shoreline of Stormy Stack Rock, located in the vicinity of 37° 56.83'N. lat. 122° 47.14'W. long. 

(B) No person except department employees or employees of the United States Fish and Wildlife Service, National Park Service, or United States Coast Guard, in performing their official duties, or unless permission is granted by the department, shall enter this area at any time.



Duxbury Reef State Marine Conservation Area





Duxbury Reef State Marine Conservation Area Boundary and Regulations *from* California Code of Regulations, Title 14 Section 632, sub-section (b)(28)

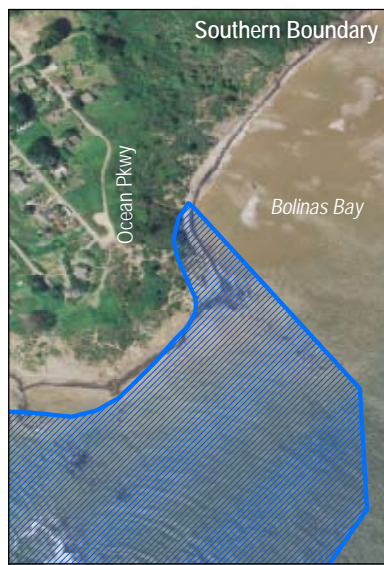
(A) Boundary

This area is bounded by the mean high tide line, a distance of 1,000 feet seaward of mean lower low water, and the following points:

- 37° 55.52'N. lat. 122° 44.17'W. long. ①;
- 37° 55.42'N. lat. 122° 44.31'W. long. ②;
- 37° 53.65'N. lat. 122° 41.91'W. long. ③; and
- 37° 53.77'N. lat. 122° 42.02'W. long. ④

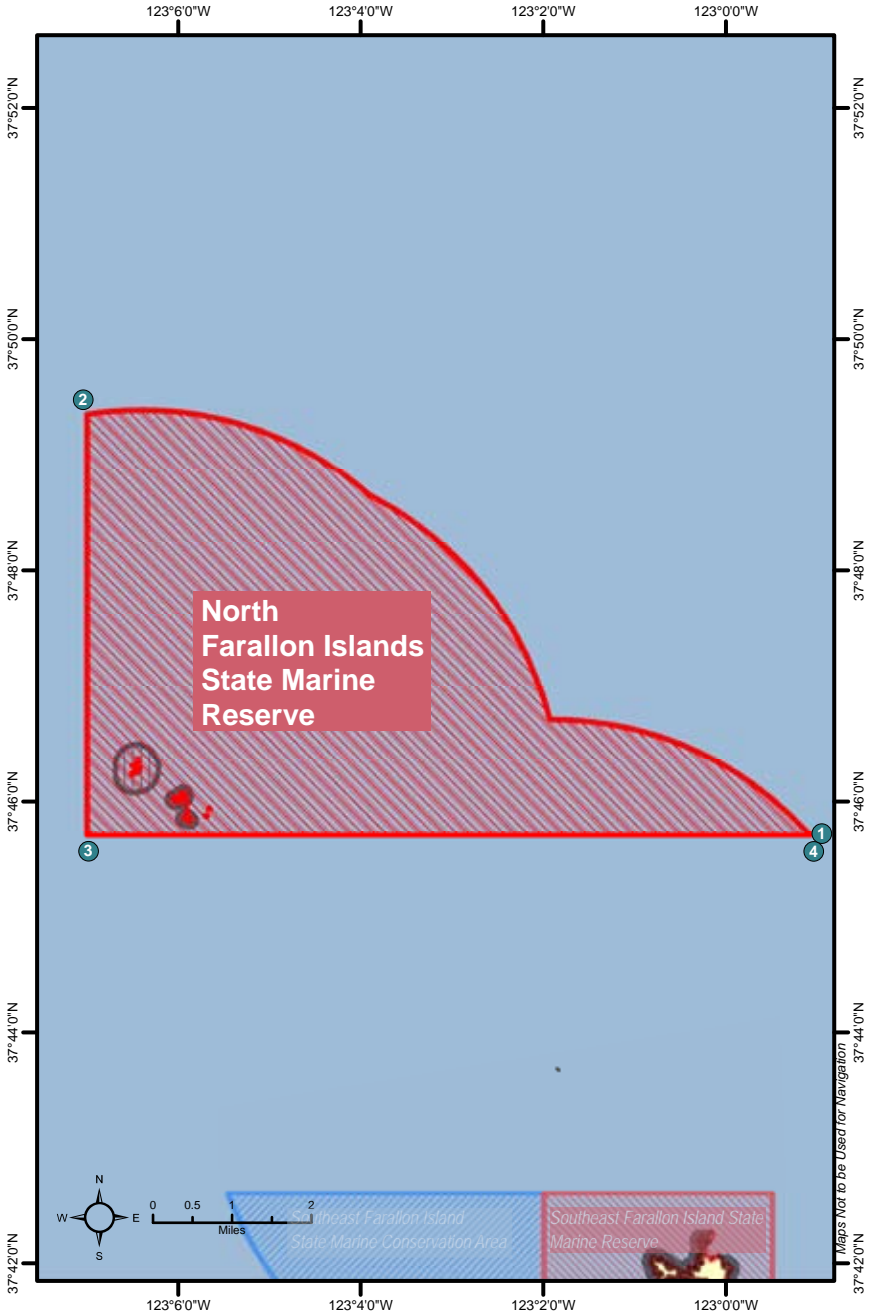
(B) Permitted/Prohibited Uses

Take of all living marine resources is prohibited except the recreational take of finfish from shore and abalone.





North Farallon Islands State Marine Reserve





North Farallon Islands State Marine Reserve Boundary and Regulations *from* California Code of Regulations, Title 14 Section 632, sub-section (b)(29)

(A) Boundary

This area is bounded by straight lines connecting the following points in the order listed except where noted:

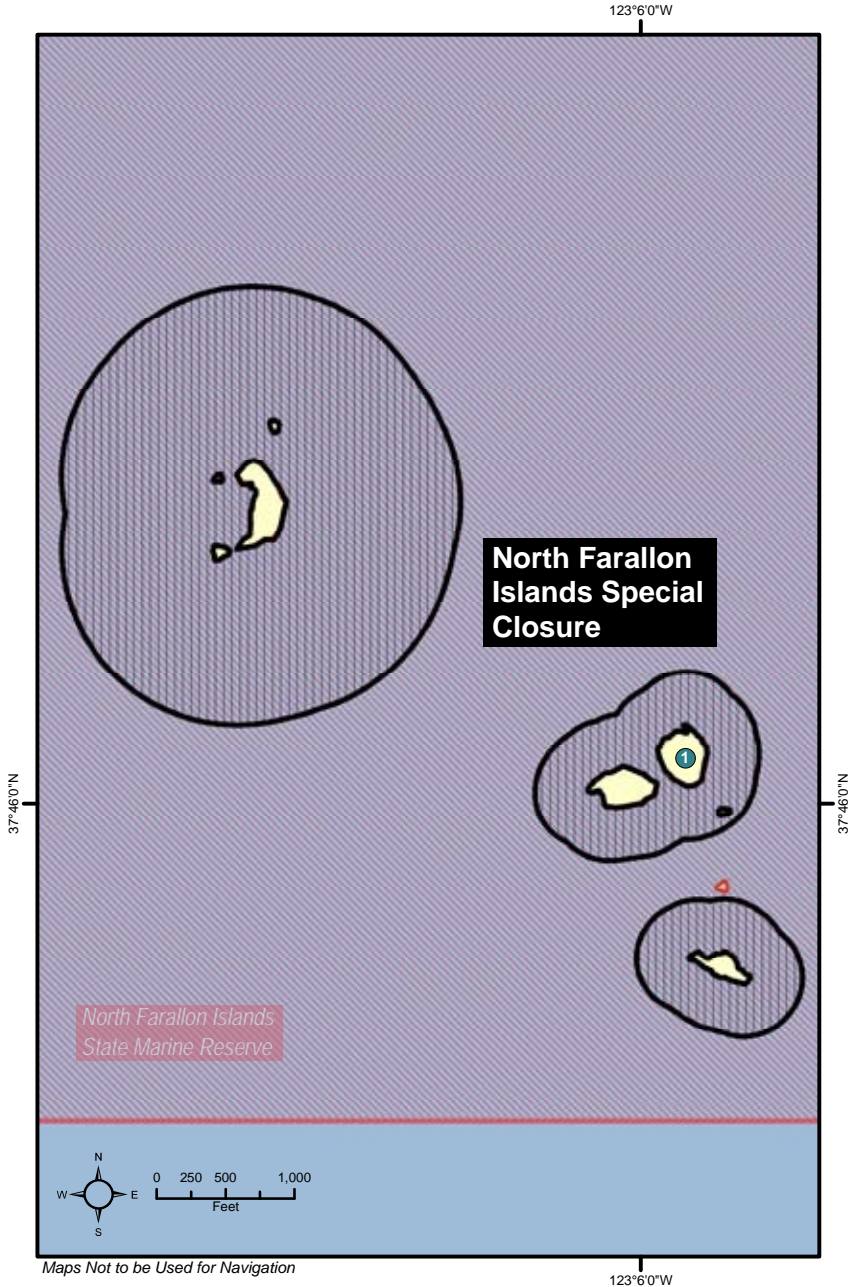
37° 45.70'N. lat. 122° 59.08'W. long. ①; thence northwestward along the three nautical mile offshore boundary to
37° 49.34'N. lat. 123° 7.00'W. long. ②;
37° 45.70'N. lat. 123° 7.00'W. long. ③; and
37° 45.70'N. lat. 122° 59.08'W. long. ④

(B) Permitted/Prohibited Uses

Take of all living marine resources is prohibited.



North Farallon Islands Special Closure





North Farallon Islands Special Closure Boundary and Regulations *from* California Code of Regulations, Title 14 Section 632, sub-section (b)(30)

Special regulations on boating and access apply to the North Farallon Islands as follows.

(A) A special closure is established at the islets comprising the North Farallon Islands.

(B) Except as permitted by federal law or emergency caused by hazardous weather, or as authorized by subsection 632(b)(30)(C), no vessel shall be operated or anchored at any time from the mean high tide line to a distance of 1,000 feet seaward of the mean lower low tide line of any shoreline of North Farallon Island, or to a distance of 300 feet seaward of the mean lower low tide line of any shoreline of the remaining three southern islets, including the Island of St. James, in the vicinity of 37° 46.00'N. lat. 123° 06.00'W. long. ①

(C) No person except department employees or employees of the United States Fish and Wildlife Service, National Oceanic and Atmospheric Administration, or United States Coast Guard, in performing their official duties, or unless permission is granted by the department, shall enter the area defined in subsection 632(b)(30)(B).

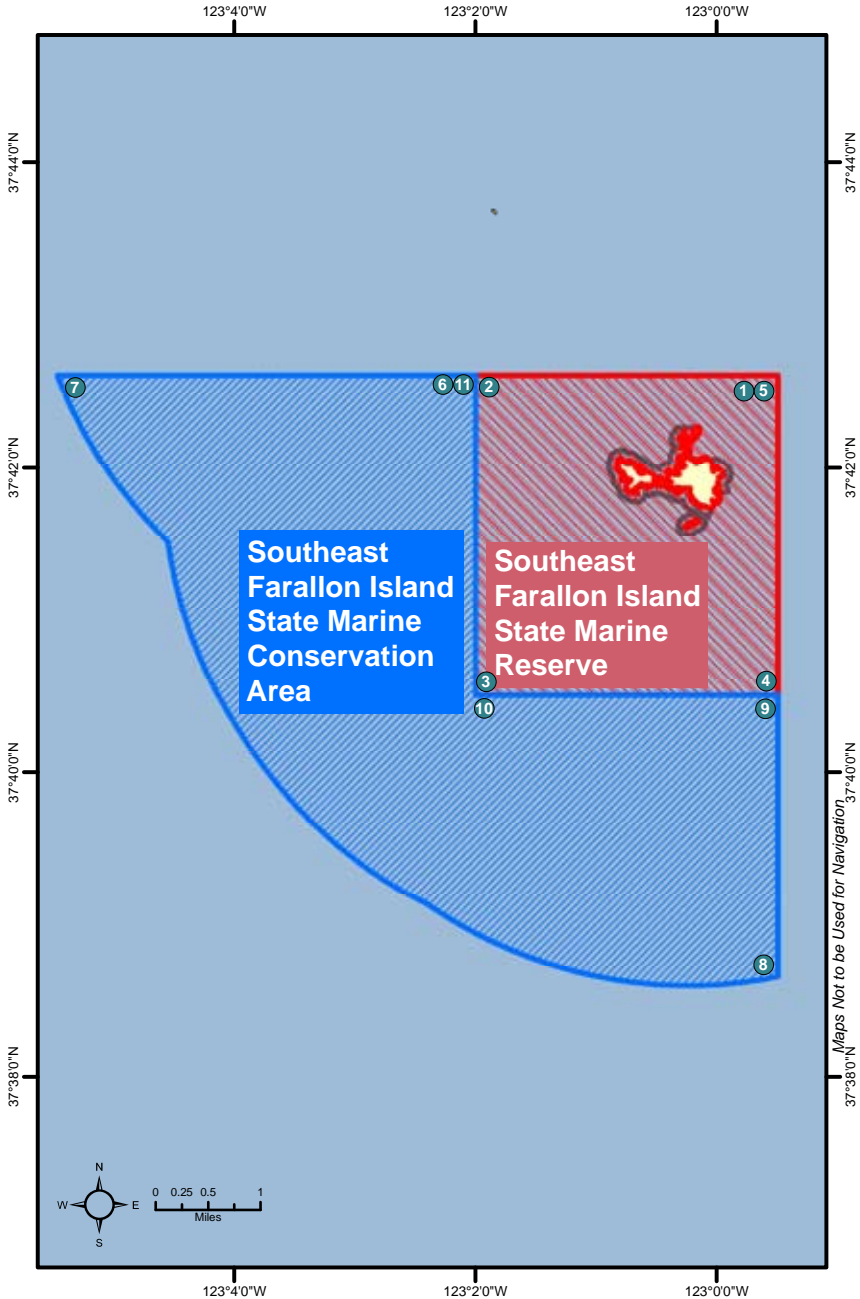
(D) All vessels shall observe a five (5) nautical mile per hour speed limit within 1,000 feet seaward of the mean lower low tide line of any shoreline of the islets defined in subsection 632(b)(30)(B).

(E) In an area bounded by the mean high tide line and a distance of one nautical mile seaward of the mean lower low tide line of any of the four islets comprising the North Farallon Islands, the following restrictions apply:

1. All commercial diving vessels operating in the defined area shall have their vessel engine exhaust system terminate either through a muffler for dry exhaust systems, or below the vessel waterline for wet exhaust systems.
2. All commercial diving vessels equipped with an open, deck-mounted air compressor system, while operating in the defined area, shall have their air compressor's engine exhaust system terminate below the vessel waterline.



Southeast Farallon Island State Marine Reserve Southeast Farallon Island State Marine Conservation Area





Southeast Farallon Island State Marine Reserve Boundary and Regulations *from* California Code of Regulations, Title 14 Section 632, sub-section (b)(31)

(A) Boundary

This area is bounded by straight lines connecting the following points in the order listed:

- 37° 42.60'N. lat. 122° 59.50'W. long. ❶;
- 37° 42.60'N. lat. 123° 02.00'W. long. ❷;
- 37° 40.50'N. lat. 123° 02.00'W. long. ❸;
- 37° 40.50'N. lat. 122° 59.50'W. long. ❹; and
- 37° 42.60'N. lat. 122° 59.50'W. long. ❺

(B) Permitted/Prohibited Uses

Take of all living marine resources is prohibited.

Southeast Farallon Island State Marine Conservation Area Boundary and Regulations *from* California Code of Regulations, Title 14 Section 632, sub-section (b)(32)

(A) Boundary

This area is bounded by straight lines connecting the following points in the order listed except where noted:

- 37° 42.60'N. lat. 123° 02.00'W. long. ❻;
- 37° 42.60'N. lat. 123° 05.46'W. long. ❼; thence southeastward along the three nautical mile offshore boundary to
- 37° 38.66'N. lat. 122° 59.50'W. long. ❽;
- 37° 40.50'N. lat. 122° 59.50'W. long. ❾;
- 37° 40.50'N. lat. 123° 02.00'W. long. ❿; and
- 37° 42.60'N. lat. 123° 02.00'W. long. ⓫

(B) Permitted/Prohibited Uses

Take of all living marine resources is prohibited except:

1. The recreational take of salmon by trolling is allowed.
2. The commercial take of salmon with troll fishing gear is allowed.



Southeast Farallon Island Special Closure

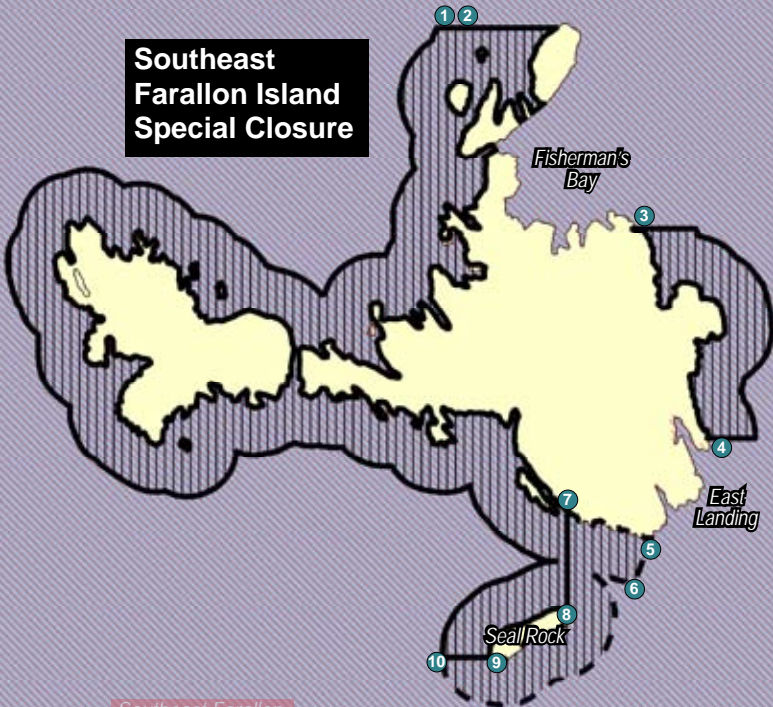
123°0'0"W

NOTE: The special closure area between Fisherman's Bay and East Landing is NOT part of the *seasonal* closure area. An early print version of this map wrongly indicates that the area between 37° 42.05'N. lat. inside Fisherman's Bay ③ and 37° 41.83'N. lat., 122° 59.98'W. long. ④ is subject to seasonal closure. The map has been corrected here.

updated 7/13/10

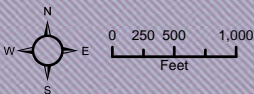
Southeast Farallon Island Special Closure

37°42'0"N



37°42'0"N

Southeast Farallon
Island State Marine
Reserve



--- Seasonal Closure Dec. 1 - Sept. 14

123°0'0"W



Southeast Farallon Island Special Closure Boundary and Regulations *from California Code of Regulations, Title 14 Section 632, sub-section (b)(33)*

Special regulations on boating and access apply to the Southeast Farallon Island as follows.

(A) A special closure is established at the Southeast Farallon Island.

(B) Except as permitted by federal law or emergency caused by hazardous weather, or as authorized by subsection 632(b)(33)(C), no vessel shall be operated or anchored at any time from the mean high tide line to a distance of 300 feet seaward of the mean lower low tide line of any shoreline EXCEPT north of a line at 37° 42.26'N. lat. ❶, and inside Fisherman's Bay south of 37° 42.26'N. lat. ❷ and north of 37° 42.05'N. lat. ❸, and at East Landing, between a line extending due east from 37° 41.83'N. lat. 122° 59.98'W. long. ❹ and a line extending from 37° 41.72'N. lat. 123° 00.05'W. long. ❺ to 37° 41.68'N. lat. 123° 00.07'W. long. ❻. This closure exists year round, except for the southeast side of Saddle (Seal) Rock, between a line extending from 37° 41.76'N. lat. 123° 00.16'W. long. ❼ to 37° 41.64'N. lat. 123° 00.16'W. long. ❽ and a line extending from 37° 41.60'N. lat. 123° 00.26'W. long. ❾ to 37° 41.60'N. lat. 123° 00.32'W. long. ❿, which is closed only from December 1 through September 14 of each year.

(C) No person except department employees or employees of the United States Fish and Wildlife Service, National Oceanic and Atmospheric Administration, or United States Coast Guard, in performing their official duties, or unless permission is granted by the department, shall enter the area defined in subsection 632(b)(33)(B).

(D) All vessels shall observe a five (5) nautical mile per hour speed limit 1,000 feet seaward of the mean lower low tide line of any shoreline of the Southeast Farallon Island.

(E) In an area bounded by the mean high tide line and a distance of one nautical mile seaward of the mean lower low tide line of any of the islands and islets comprising the Southeast Farallon Island, the following restrictions apply:

1. All commercial diving vessels operating in the defined area shall have their vessel engine exhaust system terminate either through a muffler for dry exhaust systems, or below the vessel waterline for wet exhaust systems.
2. All commercial diving vessels equipped with an open, deck-mounted air compressor system, while operating in the defined area, shall have their air compressor's engine exhaust system terminate below the vessel waterline.



Egg (Devil's Slide) Rock to Devil's Slide Special Closure



Maps Not to be Used for Navigation



Egg (Devil's Slide) Rock to Devil's Slide Special Closure Boundary and Regulations *from* California Code of Regulations, Title 14 Section 632, sub-section (b)(42)

(A) A special closure is designated from the mean high tide line to a distance of 300 feet seaward of the mean lower low tide line of any shoreline of any of the three rocks comprising Egg (Devil's Slide) Rock, located in the vicinity of:

37° 34.64'N. lat. 122° 31.29'W. long. ❶;
37° 34.66'N. lat. 122° 31.32'W. long. ❷; and
37° 34.63'N. lat. 122° 31.29'W. long. ❸; and the area bounded by the mean high tide line and straight lines connecting the following points in the order listed:

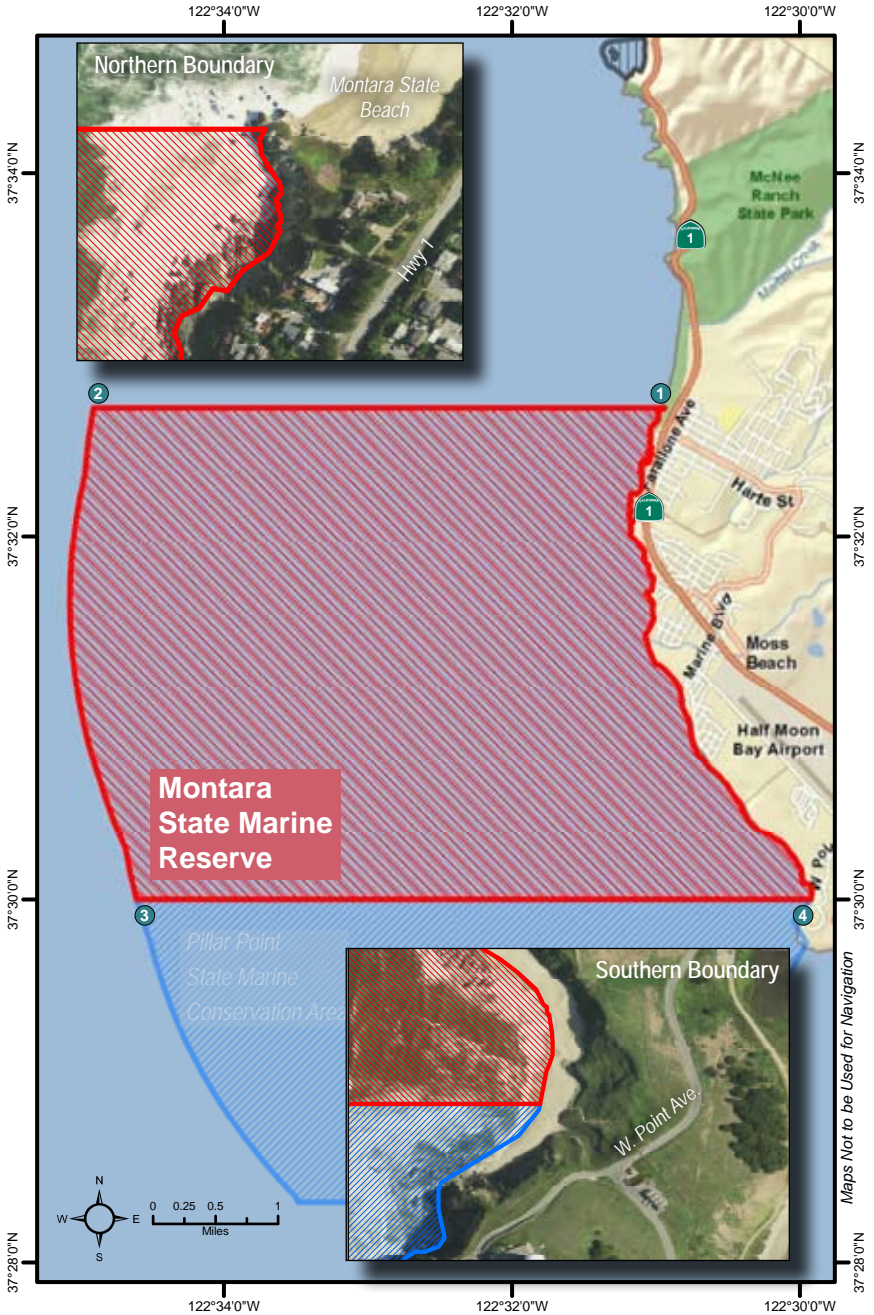
37° 34.74'N. lat. 122° 31.08'W. long. ❹;
37° 34.72'N. lat. 122° 31.31'W. long. ❺;
37° 34.60'N. lat. 122° 31.33'W. long. ❻; and
37° 34.52'N. lat. 122° 31.21'W. long. ❼

(B) Transit in between the rock and the mainland between these points is prohibited at any time.

(C) No person except department employees or employees of the United States Fish and Wildlife Service, U.S. Bureau of Land Management, National Oceanic and Atmospheric Administration, or United States Coast Guard, in performing their official duties, or unless permission is granted by the department, shall enter this area.



Montara State Marine Reserve





Montara State Marine Reserve Boundary and Regulations *from* California Code of Regulations, Title 14 Section 632, sub-section (b)(43)

(A) Boundary

This area is bounded by the mean high tide line and straight lines connecting the following points in the order listed except where noted:

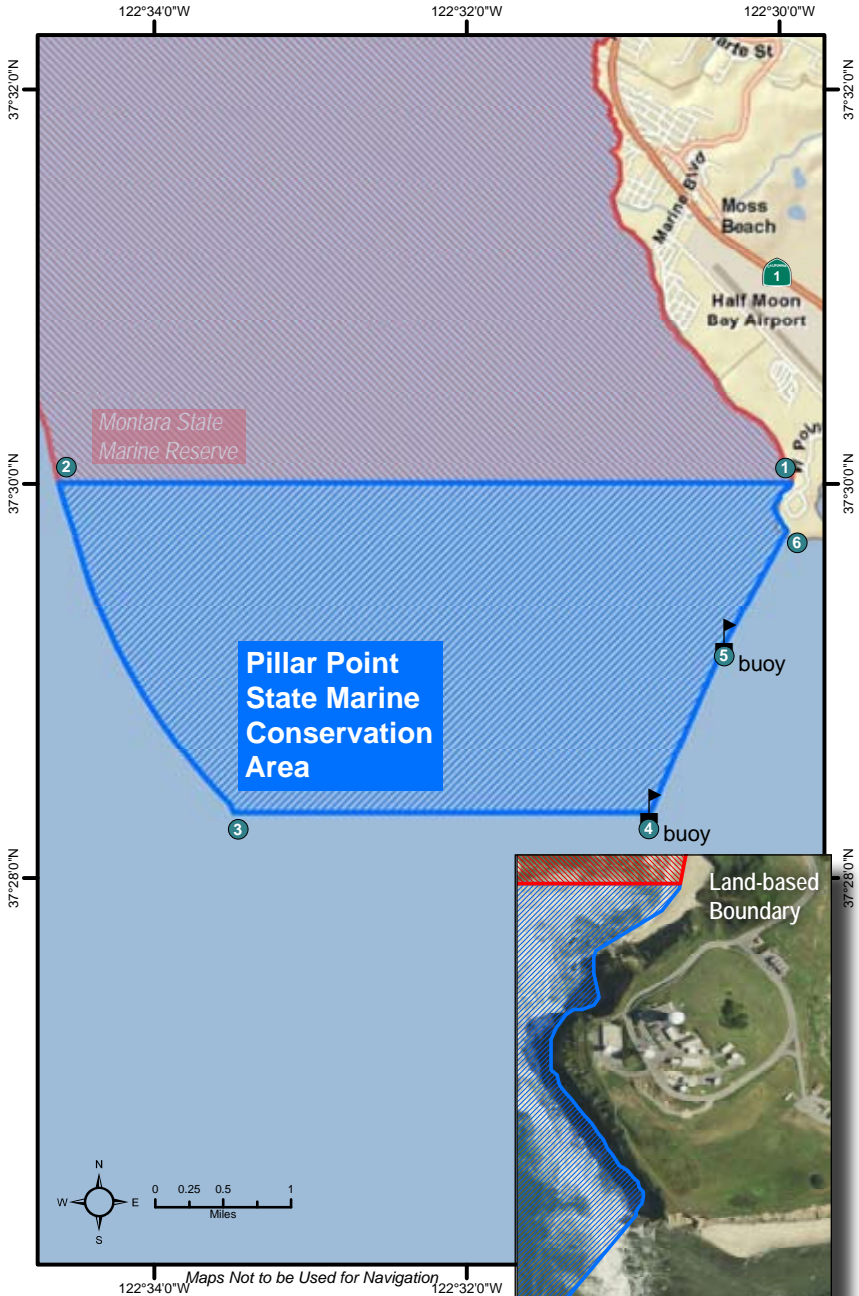
- 37° 32.70'N. lat. 122° 31.00'W. long. ❶;
- 37° 32.70'N. lat. 122° 34.91'W. long. ❷; thence southward along the three nautical mile offshore boundary to
- 37° 30.00'N. lat. 122° 34.61'W. long. ❸; and
- 37° 30.00'N. lat. 122° 29.93'W. long. ❹

(B) Permitted/Prohibited Uses

Take of all living marine resources is prohibited.



Pillar Point State Marine Conservation Area





Pillar Point State Marine Conservation Area Boundary and Regulations *from* California Code of Regulations, Title 14 Section 632, sub-section (b)(44)

(A) Boundary

This area is bounded by the mean high tide line and straight lines connecting the following points in the order listed except where noted:

- 37° 30.00'N. lat. 122° 29.93'W. long. ①;
- 37° 30.00'N. lat. 122° 34.61'W. long. ②; thence southward along the three nautical mile offshore boundary to
- 37° 28.33'N. lat. 122° 33.47'W. long. ③;
- 37° 28.33'N. lat. 122° 30.83'W. long. ④;
- 37° 29.18'N. lat. 122° 30.36'W. long. ⑤; and
- 37° 29.74'N. lat. 122° 29.97'W. long. ⑥

(B) Permitted/Prohibited Uses

Take of all living marine resources is prohibited except:

1. The recreational take of pelagic finfish* by trolling, Dungeness crab by trap, and market squid by hand-held dip net are allowed.
2. The commercial take of pelagic finfish* by troll or round haul net, Dungeness crab by trap, and market squid by round haul net.

*Pelagic finfish, for the purpose of this guidebook, are defined as: northern anchovy (*Engraulis mordax*), barracudas (*Sphyraena* spp.) billfishes (family Istiophoridae), dolphinfish (*Coryphaena hippurus*), Pacific herring (*Clupea pallasii*), jack mackerel (*Trachurus symmetricus*), Pacific mackerel (*Scomber japonicus*), salmon (*Oncorhynchus* spp.), Pacific sardine (*Sardinops sagax*), blue shark (*Prionace glauca*), salmon shark (*Lamna ditropis*), shortfin mako shark (*Isurus oxyrinchus*), thresher sharks (*Alopias* spp.), swordfish (*Xiphias gladius*), tunas (family Scombridae), and yellowtail (*Seriola lalandi*). The commercial take of marlin is not allowed.



Help Fish and Game Wardens Put an End to Poaching

If you see someone poaching or polluting,
immediately call CalTIP at our toll-free number,
24 hours a day, seven days a week.

You don't have to give us your name.

Help wardens stop the senseless waste of
our fish and wildlife resources.

Together we can make a difference!

1 - 888 - DFG - CalTIP

(1 - 888 - 334 - 2258)

Californians Turn In Poachers

This document does not replace the official regulatory language
found in CCR, Title 14, Section 632.

Questions or comments can be sent to MLPAComments@dfg.ca.gov
For more information about the MLPA or MPAs, visit the MLPA Website at
www.dfg.ca.gov/MLPA

Cover photo credits: NOAA, DFG. Cover GIS image: DFG/P. Serpa
Maps and satellite imagery credits: Digital Globe, Bing Maps, USGS, NOS, DFG
DFG Production Staff (in alphabetical order): C. Miller, M. Patyten, P. Serpa.
DFG Editors and Contributors (in alphabetical order): S. Ashcraft, K. Hrbacek,
K. MacIntyre, B. Naslund.

