



BINUS UNIVERSITY
INTERNATIONAL

People. Innovation. Excellence.

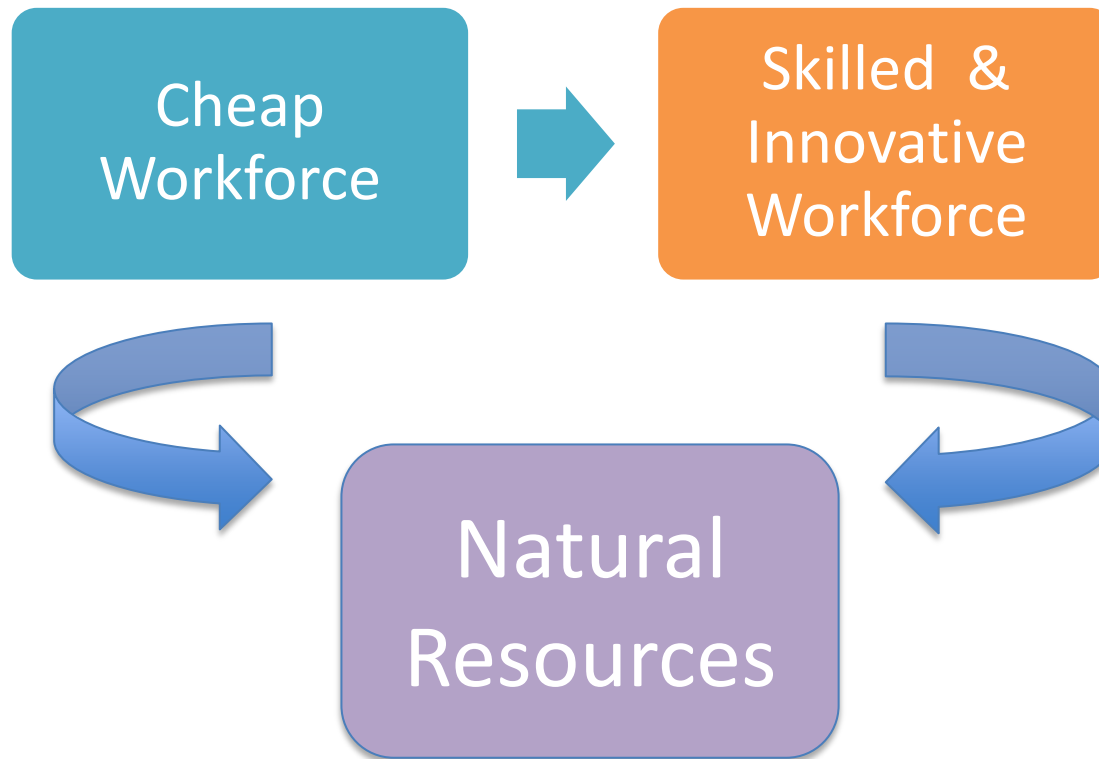


Anniversary
BINA NUSANTARA

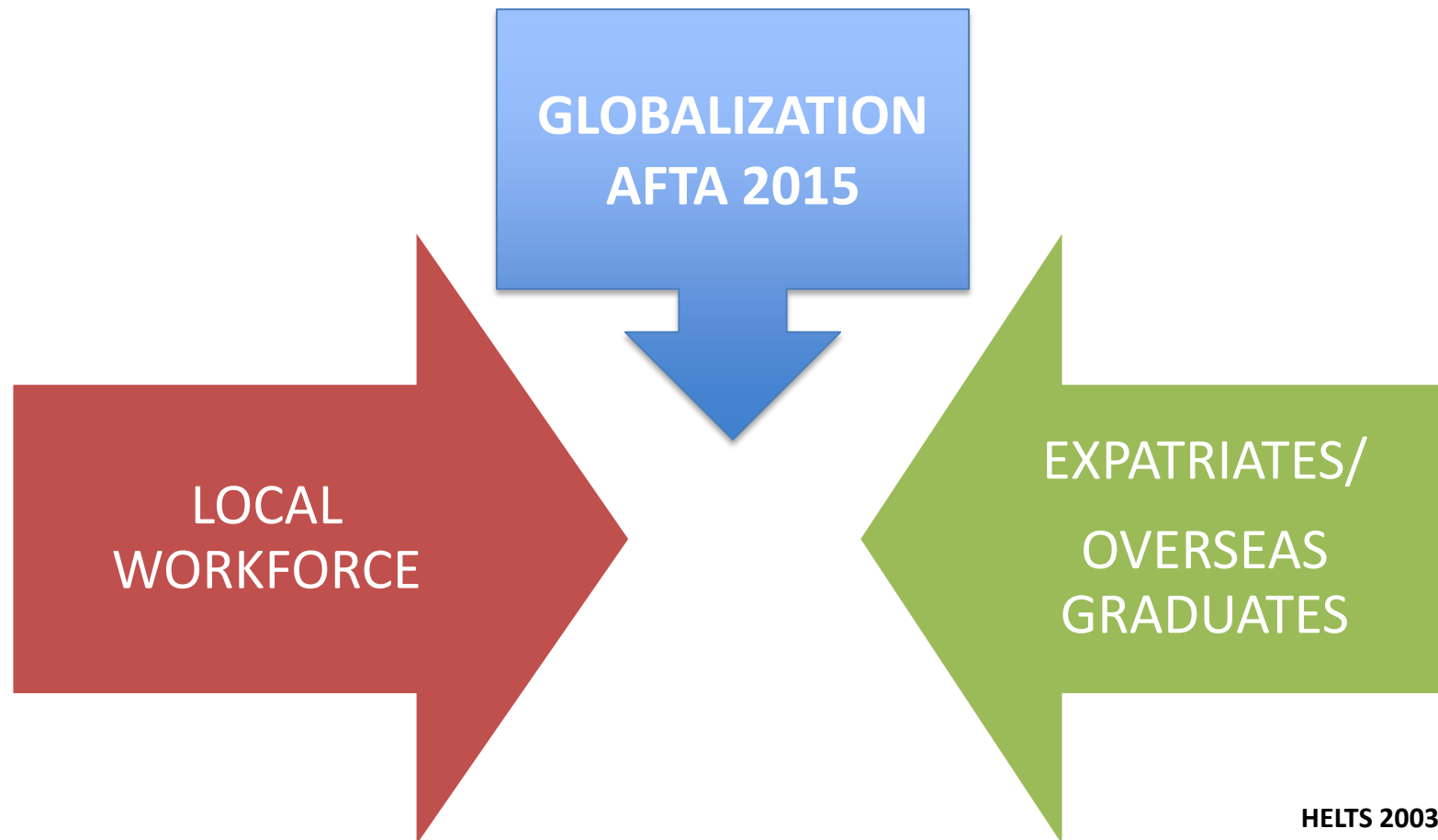


Internationalization Programs at BINUS INTERNATIONAL

Indonesian Education Challenges



Indonesian Education Challenges



Answer to the Challenges

Leveraging nation competitiveness & capabilities through higher education with international insight

BINUS Internationalization Programs

- Twinning Program for undergraduate and graduate programs
- Master Track
- Student Exchange
- Study Abroad
- Summer/Short Course

BINUS Partners



BINUS Partners

- Asia : 2 universities
- Australia : 8 universities
- Europe & UK : 7 universities
- Middle East : 1 university
- New Zealand : 2 universities

BINUS Australian University Partners

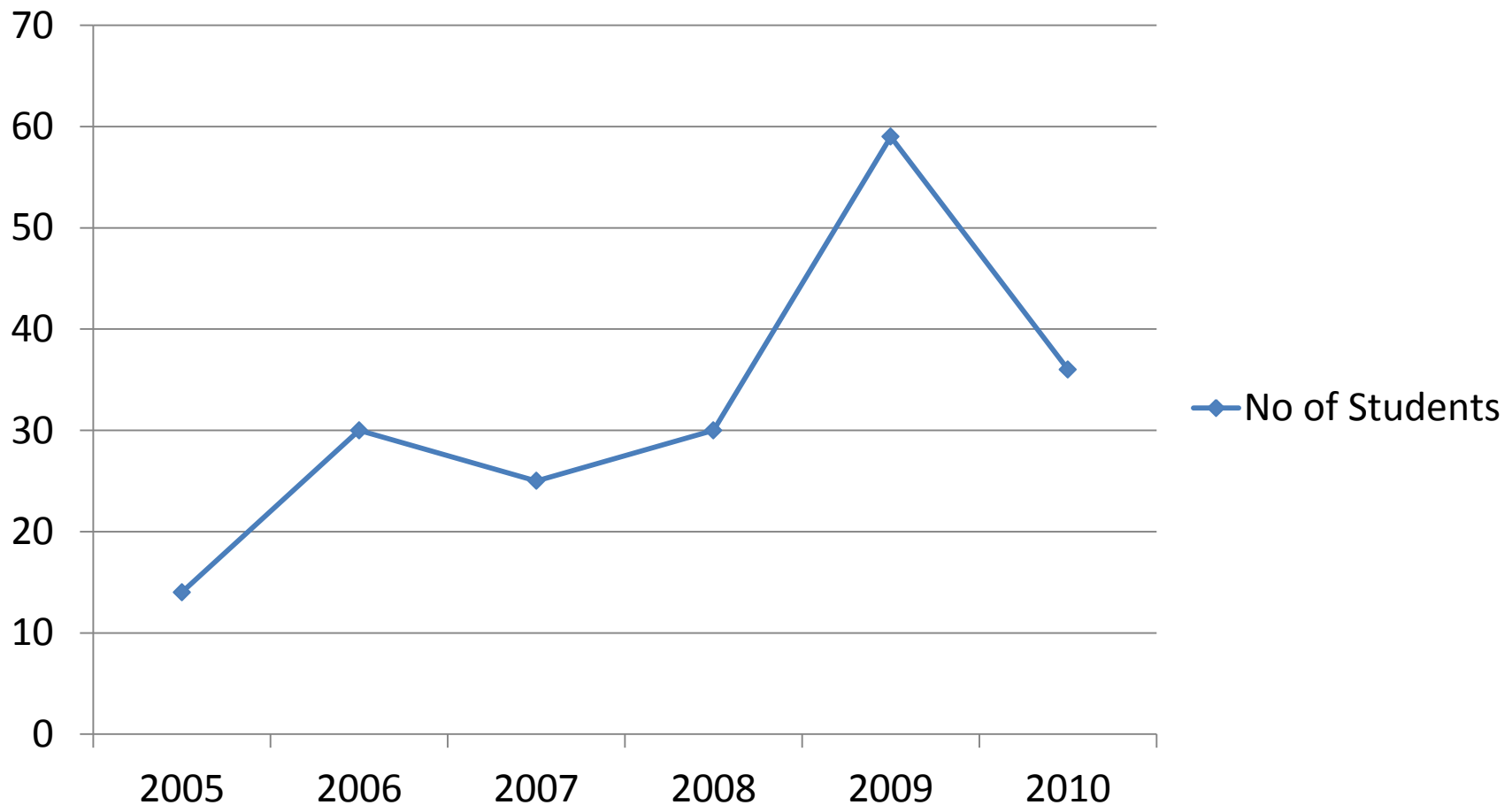
Partner*	Main Program	Starting Year
Curtin University	Twinning Program	2003
L a Trobe University	Twinning Program	2008
Macquarie University	Master Track & Dual Master	2005
Murdoch University	Twinning Program	2006
QUT University	Twinning Program	2010
RMIT University	Twinning Program	2003
University of New South Wales	Study Abroad	2010
University of Wollongong	Twinning Program	2007

* MOUs with above universities also cover other kind of academic activities including Faculty Mobility, Student Exchange, and Joint Research

Why Twinning Program?

- Economic Crisis 1997
High exchange rates that hinder the students to continue their study overseas.
- BINUS saw this as an opportunity to open various international programs in which the students could experience both local and international atmospheres in one study program.

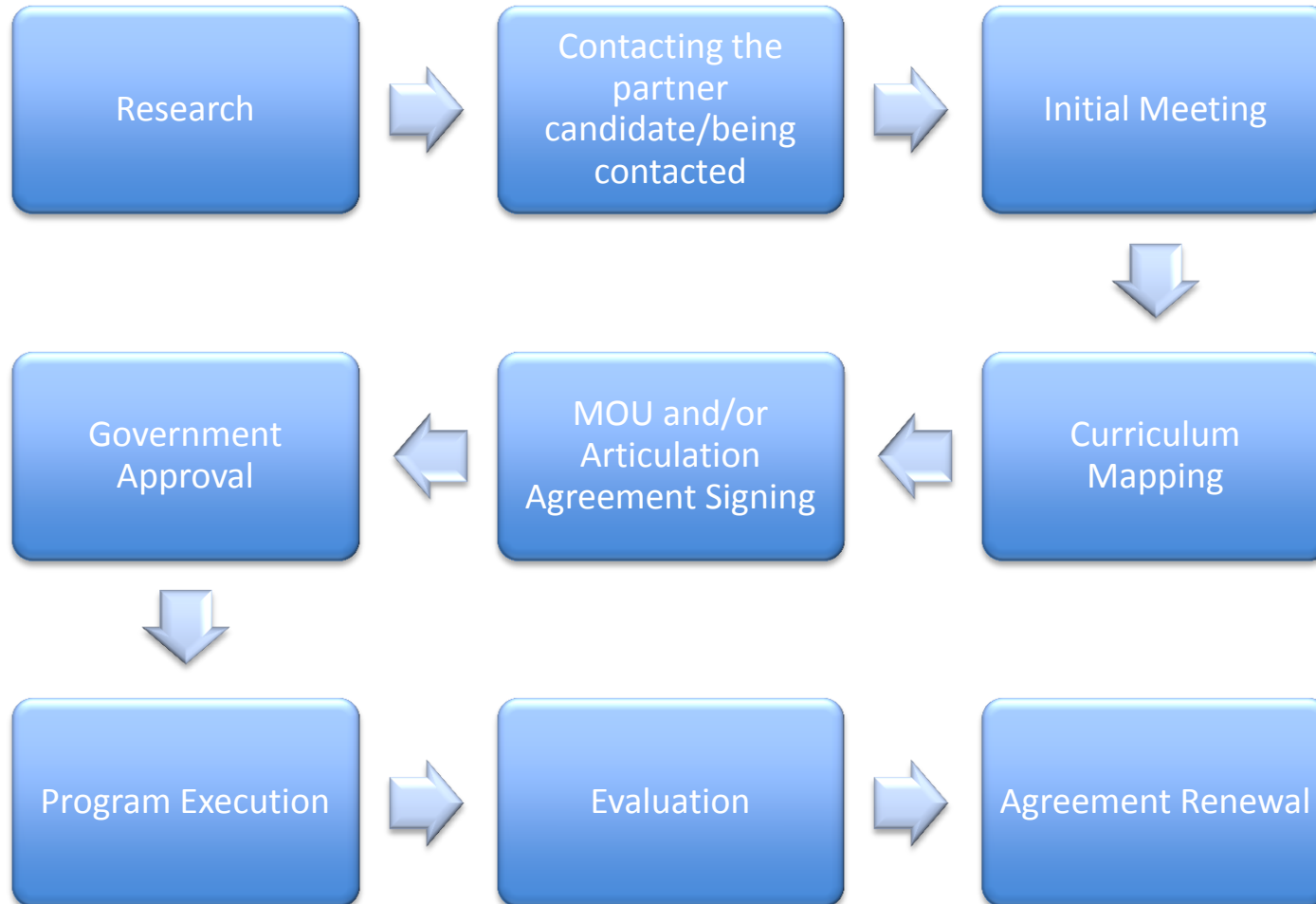
Statistic for Twinning Program to Australia



Why does It Work?

- Selected Partners (ranking, accreditation, specialization)
- Good Marketing (BI day, special offer for tuition fee, joint marketing, etc)
- Selective Recruitment
- Best Location

Developing the Partnership



Constraints & Solutions in Developing Partnership

Constraints	Solution
Accreditation: some Universities required certain accreditation for its partners	Limited collaboration
Unmatched curriculum : Government regulations vs Accreditation Body requirements	<ul style="list-style-type: none"> - partners' units taught at home university - joint supervision for the thesis - 2+1+1 arrangement or 2,5 + 1 + 0.5 arrangement
Long assessment/process towards the MOU Signing	There's nothing can be done for this case since each university partner has its own process for the partnership
Lost contact (staff changes or restructurization)	Contacting its International Office to have the new contact or through agent/personal contact

Problems in Program Execution

Problems	Solutions
Some partners take a long time to release the Letter of Offer and other visa documents	Follow it up diligently. This might be because of the RPL thing or because of limited resources in handling admission during the peak season
Unmatched Academic Calendar that affects student visa application	Conditional offer + conditional eCoE
Change in Course Contents leading to different RPL (Recognition of Prior Learning) and change of study duration	<ul style="list-style-type: none"> - New curriculum mapping - Make some exceptions (case by case) that fit with both institution curriculum
Unmet English Proficiency Requirement	<ul style="list-style-type: none"> - English online program from the partners before the program is started at host university - Recommend the students to take the English test as early as possible so that they will have enough time to retake the test
Other problems	Communication

Recommendation

- Communication is very important
- Mentoring (academic, accreditation, etc)
- Joint project between 3+1 students and its fellow students from partner university before continuing their study with partners to make the adaptation process easier.
- More visiting lecturer

Thank You

Q & A Session