



EAST LONDON MOSQUE EST. 1910

# Annual Report

2011–12



# Contents

Chairman's Foreword	03
Executive Summary	04
Religious Services	05
Education and Training	06
Social Welfare	08
Community Cohesion	12
Economic Development	14
Fundraising	15
Premises	16
History and Archives	18
Timeline	19
Conclusion	20
Management Committee	20
Financial Statements	22

*'To provide a range of excellent services to improve spirituality, education and social conditions in the communities of London, enhancing community cohesion through partnerships.'*

# Chairman's Foreword

*In the name of Allah, the Most Beneficent, the Most Merciful.*

**A cornerstone of our faith is to remain hopeful, to face challenges with a positive attitude towards change and proactive engagement. This is despite the continuing recession that affects poorer people the most, the increase in Islamophobia and right-wing extremism, and declining trust in our politicians. I am proud that the East London Mosque & London Muslim Centre has remained steadfast in its commitment to serve all the communities, Muslim and non-Muslim.**

Last summer's riots were a reminder that all is not well in some parts of our community, and stronger relationships need to be developed so people do not go against the grain of civil society. Tower Hamlets showed amazing resilience as people not only refrained from rioting, but more importantly defended the place they call home from rioters.

The far-right, encouraged by an irresponsible minority in the media, has attacked Muslim communities; our own institution has in particular been a target. Once again our pluralist community of Tower Hamlets drew together to drive out the fascists and racists; we are ONE community!

There is much to look forward to and be hopeful about. In preparation for the London 2012 Olympics we helped promote the games, and supported colleagues at local and regional level in getting key messages out.

In the year ahead we look forward to completing our much anticipated Maryam Centre, a world class resource focussed on services for women. God willing, it will be a year for hope, a year for new friendships, a year for celebration.



A handwritten signature in blue ink that reads "Muhammadi".

Dr Muhammad Abdul Bari MBE  
Chairman

*Dr Muhammad Abdul Bari is an educationalist and author. He was Secretary General of the Muslim Council of Britain and is currently a board member of the London Organising Committee of the Olympic Games and Paralympic Games (LOCOG).*

# Executive Summary

This has been another year of providing essential services to our communities. The number of people benefiting from our projects and services has increased, and our congregations are larger than ever.

Ramadan 2011 saw a footfall of over a quarter of a million. Every day in Ramadan around 500 people were provided with free iftar (meal for breaking of the fast). Despite our own need for funds we allow other mosques and charities to collect funds throughout the year and particularly in Ramadan.

The Islam Awareness Project organised three weekend exhibitions this year which together welcomed more than a thousand visitors. Their publication 'It's About Islam' was well received by those visitors. They provide support to new Muslims for their religious, educational and social needs. We host regular visits by educational institutions and community groups throughout the year.

Our projects have been affected by the ongoing economic recession. Funding for Improving School Attendance and Attainment in Partnership, a flagship project of ELMT, has been significantly reduced. As a result we had to make two of our staff redundant and reduce the working hours of remaining staff.

Our full time schools, Al Mizan and London East Academy, continue to excel in both Islamic and National Curriculum subjects. 93% of LEA's students achieved 5 or more (A-C grades) GCSEs including Maths and English; 8 students completed memorisation of the Qur'an in this reporting period.

The evening and weekend schools continue to provide good quality Islamic and supplementary education to around 700 children. To improve further the quality of education we engaged an independent body, the NIDA Trust, to evaluate performance and make recommendations.

We have increased support for Al Isharah, the project for deaf Muslims. The number of deaf Muslims coming here for Friday prayers and Islamic education from all over London and beyond has increased since the introduction of BSL sign language 3 years ago. Some of our staff and volunteers attended a short introductory course in British Sign Language.

Our volunteers, organised through Jamiat-ul-Muslimin, managed the collections and stewarding on Fridays and Ramadan effectively. Moreover, our partner organisations, e.g. the local branches of Islamic Forum of Europe, Young Muslim Organisation UK and Muslima UK, actively raised funds for the Maryam Centre.

More than 6,000 people were served by our Imams through their regular surgeries answering questions on religious teachings, dealing with family issues, etc. ELM Women's Link, despite its limited resources, has supported women in social welfare and domestic issues. Our Faith in Health project held a number of events throughout the year; hundreds of people attended and benefited from the information and advice provided on health matters.

We engage with wider society for the common good and to improve community cohesion. Our Assistant Executive Director is the Chair of the Tower Hamlets Council for the Voluntary Service. I have been serving as one of the Vice-Chairs of the Faiths Forum for London and Co-organiser for the Imams and Rabbis Council with the Director of the Joseph Interfaith Foundation. We have jointly organised a number of meetings and seminars with Imams and Rabbis of London, promoting better understanding of each other. We have actively participated in the campaigns and events of the London Citizens and The East London Citizens Organisation (TELCO).

We have worked together with the Tower Hamlets Interfaith Forum, Tower Hamlets Council, Unite Against Fascism, One Society Many Cultures and United East End to confront the growing threat of the far right, particularly from the English Defence League who promote hatred against Muslims.

The Maryam Centre's construction work slowed down in this period to allow more time to raise funds. Our main challenge for the next year is to the Maryam Centre. We pray to Allah to give us the wisdom, energy and perseverance to continue to develop this great institution for the benefit of all in our society in general and for the Muslim community in particular.



A handwritten signature in black ink, appearing to read 'D. Hussain Khan'.

Dilowar Hussain Khan  
Executive Director



# Religious Services

## Prayer Facilities

The number of people praying at our Mosque is still increasing. At full capacity over 5,000 people attend the Jumu'ah (Friday) prayer, and in an average week about 26,000 use the Mosque for prayer. In Ramadan the total number of people attending prayers passes the quarter of a million mark.

The mosque has British Sign Language interpretation for the Friday and Eid sermons.

On most days of the week there is at least one Janazah (funeral) prayer – sometimes several – usually straight after the midday prayer; there were 401 from April 2011 to March 2012.

## New Muslims

The Islam Awareness Project continues to provide support to those interested in learning about Islam and becoming a Muslim. IAP published a basic booklet on Islam called It's about Islam. The booklet explains the message of Islam in a concise and comprehensive way and is ideal as a first introduction to Islam.

## Religious Teaching

The Mosque tries to help people learn about their religion. There are several weekly sessions in English, Somali, Bengali and Arabic language.

Two Hajj training programmes were held, in English and Bengali, with a combined attendance of about 1,200 people. There were also two Umrah seminars with a total attendance of around 400.

*'At full capacity over 5,000 people attend the Jumu'ah (Friday) prayer...'*

## Adhan Radio

This valuable service continues to provide access to the Adhan (Call to Prayer), Friday sermon, Tarawih (Ramadan evening prayers) and selected programmes for those at home.

## Ramadan 1432 AH

During Ramadan it is very busy every single day; in total, the number of visits for prayer during the month passes a quarter of a million.

The start of Ramadan coincided with the adoption of the new Unified Prayer Timetable for London, simultaneously adopted by other mosques and centres in London, including the Islamic Cultural Centre in Regents Park.

The Mosque hosted about 500 people every day in Ramadan for Iftar (meal for breaking of the fast) in the LMC halls. Demand for I'tikaf (seclusion in the Mosque) was high; 60 people were selected by lottery to perform I'tikaf in the Mosque.

Ramadan saw a surge in donations to worthy causes. A total of £81,912 was collected of which nearly £25k was for famine relief in Somalia.

There were also cash collections in Ramadan and on Eid for the Mosque's Phase 2 project reaching almost £100,000.

## 'Eid

'Eidul Fitr as always was very busy, this year with six congregations at hourly intervals from 7am until 12 noon. There were four congregations for 'Eidul Adha.

# Education & Training



## Improving School Attendance & Attainment in Partnership (ISAAP)

This was a challenging year for ISAAP in terms of funding and project sustainability. However, the project managed to navigate through the difficult financial climate and continue its delivery of innovative programmes to both primary and secondary schools in Tower Hamlets.

Most of the schools from last year continued their Service Level Agreements with ISAAP. Two new schools came on board: Marion Richardson (a school ISAAP worked with a few years ago) and St John's CofE primary school.

ISAAP continues to make a positive contribution to the educational lives of families in Tower Hamlets. The work and scope of ISAAP activities goes beyond addressing issues of attendance and punctuality. ISAAP made a significant contribution to raising overall levels of attainment by engaging with parents and pupils in wider educational matters. In secondary schools, ISAAP staff worked on addressing underlying issues of underachievement.

This year ISAAP provided direct support to over 200 families. Furthermore, through general school assemblies, ISAAP reached over 2000 pupils in schools in Tower Hamlets. On behalf of the East London Mosque, ISAAP teamed up with the Jagonari Centre to address the issue of domestic abuse by collaborating on the END IT! Campaign to raising awareness and engage with men to become champions against domestic abuse.

## London East Academy

The primary provision, Al Mizan, continues to deliver a timetable split evenly between Tahfiz (memorisation of the Qur'an) and the National Curriculum. It currently has 99 boys on roll in four classes, years 3 to 6.

At the end of Key Stage 2 the average national expected level is level 4, but most of our students achieved a level 5 in Maths, Reading and English overall.

The school has strengthened its Tahfiz programme at secondary level. This not only facilitates Al Mizan students to continue and complete Tahfiz but also enables new students to take up memorization of Qur'an. Eight students completed memorization of the Qur'an.

For the secondary school, in the GCSEs, 93% of the school's pupils achieved 5 or more including Maths and English. The quality of its results improved with over 100 A\* or A. The secondary section currently has 146 students. Both schools combined have a total of 22 staff members with at least two part-time.

The annual trip abroad during this reporting period was to Turkey where year 11 students enjoyed both educational and recreational activities.

After a consultation with Year 11 students and their parents, the Governing Body decided not to recruit for the Sixth Form until further notice.

## ■ Saturday Islamic School

The Saturday Islamic School continued to build on its strengths. This year the school developed partnership links with Bethnal Green Academy while maintaining its work with other partners. The school is catering for more than 600 girls and boys aged 6½ to 16 years old. Demand for places remains high, particularly for the younger age groups. A key priority for the school is to maintain the quality of learning and further improve the curriculum. Finding suitably qualified and committed female teachers continues to pose the greatest challenge.

## ■ ELM Evening Madrasah

The ELM Evening Madrasah provides classes for children for two hours each weekday evening. It's curriculum includes Qur'an, Islamic Studies, Fiqh, Tajweed, Manners, Aqeedah, and much more. There are 378 students on roll, and 166 on the waiting list. 8 classes take place in the Mosque and 6 in the LMC. The Madrasah was inspected by the NIDA Trust, who checked all aspects of the institution: from teaching methods, testing core syllabus application principles, interviewing parents and pupils, to health & safety in the classroom and behaviour management.

## ■ Al Baseera Institute of Arabic & Islamic Studies

Al Baseera Institute was established over a decade ago to deliver basic knowledge of Arabic, Qur'an and Shari'ah studies, through adult classes based at the London Muslim Centre. Core subjects offered every semester: Arabic Alphabet, Arabic Reading, Arabic Language, Tajweedul Qur'an and Tahfidhul Qur'an.

## ■ Library

The library operates from: Mon to Thu 4.00 – 8.00 PM, and Fri to Sun 2.00 – 8.00 PM, with seasonal adjustment around the prayer times.

The library's has over 6,500 books, mainly in English and Arabic, but includes over 600 books in Bangla and over 500 for children. There are also 16 computers with internet access and Microsoft Office which are available for library users without charge. The number of users has now passed 1,700 visits per month. As the consultation room was no longer required, that end of the library was redeveloped to form a new archive room and a separate project office.

## ■ Food 4 Thought

Food4Thought has continued to offer a comprehensive study support programme to young people from years aged 11 to 16, focussing on the core subjects of English, Maths and Science. There are 60 pupils based at the LMC, and 25 learning at the Whitechapel Idea Store – each of them steadily improving upon their ability to attain better grades/qualifications. Food 4 Thought will be expanding over the coming year, in an attempt to address the waiting lists, and developing its programme for the vast number of volunteers. It has recently achieved a quality mark in 'Quality in Study Support and Supplementary Services' (QiSS).

## ■ Rainbow House Children's Centre

Rainbow House Children's Centre – open six days a week – is dedicated to quality provision for under 8-year-olds. It provides the following services: morning and afternoon pre-

school sessions (Mon–Fri); Arabic language club (Sunday); Evening Madrasah (Wed–Fri); Qur'an for mums (Fridays); and, crèche services (on request).

With all its sessions currently running at maximum capacity it sees over 100 children and parents benefiting from its services every week. It is working with Ofsted and Early Years to explore the possibilities of expanding to meet the needs of parents and reduce its waiting list. Its recent Ofsted report highlighted the quality of the services provided by its staff and the vibrant environment in which children learn and grow.

## ■ Services for Deaf Children and Adults

It's now over three years since the East London Mosque became the first to introduce British Sign Language (BSL) interpreted sermons on Fridays. This was made possible by a pioneering organisation working for and with deaf Muslims – Al-Isharah. The weekly BSL sermons, followed by sessions after the Friday prayer, and weekend classes for children, were so successful that Al-Isharah was given a permanent project office in the LMC community centre.

We see increasing numbers of deaf people joining us from all over London and beyond to attend the Friday sermon; approximately 300 service users benefit from this.

Staff at the East London Mosque are keen to break down communication barriers with deaf worshippers and visitors. With this in mind, we recently established a partnership with Diverse Communicators and Tower Hamlets Idea Store to run a short introductory course in BSL.

## ■ Junior Muslim Circle

The JMC has been operating since 1999, providing a range of exciting, educational, social, recreational and challenging activities for young boys and girls aged between 8–14 years old in a safe environment.

Through fun debate sessions and use of multimedia JMC provides several educational activities. Social activities are delivered through different days organised such as the Eid Party, cultural activities, JMC night, etc. Recreational activities are delivered through day trips, sports, indoor and outdoor activities.

The JMC has an excellent team of volunteers who are positive role models to the young people who attend. The JMC has had a club room in the basement of East London Mosque since 2004.

## ■ 8th East London LMC Scouts Group

Young people aged 8–14 take part in structured activities that teach life skills and discipline, following a typical scout development programme. 27 boys learn cooking, first aid, camping, arts and craft, all with an Islamic ethos. A Scouts Group for girls will be launched in September 2012.

## ■ Training for Staff, Volunteers and Management Committee

The ELMT organised training sessions for customer service, conflict of Interest, and strategic planning for volunteers, staff and management committee members.

# Social Welfare



Picture: A Health Connex event organised by Faith in Health.

## ■ Help, Advice and Counselling

The demand for guidance and advice on personal and religious matters is immense, and continues to grow. Despite all our imams operating surgeries, it is sometimes difficult to deal with all the people who seek help, either in person, or by email, letter, and telephone. Over 6,000 people accessed the imams over this year.

## ■ Jamiat-ul-Muslimin

This volunteer support network for the ELMT has provided great service over the past year. Numbering over 100, these dedicated volunteers sacrifice their time to ensure that major religious events are supported. Particular support has been provided for the Friday Jumu'ah, Eid Prayers, Tarawih and Itikaf – this includes raising funds for the Mosque, guiding and helping worshippers, and maintaining safety and security.

## Working in Partnership

ELMT continued to strengthen relationships with existing partner organisations, and forged new relationships to advance the common good.

## Tower Hamlets CVS

The Tower Hamlets Council for Voluntary Service has been making good progress in providing support to the voluntary, community and faith sectors. THCVS made great progress in delivering services to local organisations and representing the

sector, particularly under the current austerity challenges facing the 1000+ organisations in Tower Hamlets.

## London Citizens and TELCO

There has been further active engagement this year with London Citizens and TELCO, with two interfaith leaders dinners taking place at the London Muslim Centre.

The Mosque has also been actively promoting the 'City Safe' campaign as part of London Citizens bid to encourage local businesses and key organisations in London to offer a safe haven to young people who may need to seek shelter from a threat.

Members of the Mosque took part in a procession with local school children and community leaders dubbed 'reclaiming our streets' in a bid to show solidarity with the community in the wake of the London Riots.

We hosted an Olympic Job Fair at the LMC, organised by TELCO, to provide an opportunity for local people to find employment during the 2012 Games.

## Muslim Council of Britain (MCB)

As a founding member of MCB, we have continued to support its activities. The ELMT raised funds to support the work of MCB during Ramadan, and has hosted its Annual General Meeting and Central Working Group meetings.

## Richard House Children's Hospice

Our partnership with Richard House Children's Hospice or continues to grow. During Ramadan 2011 we co-hosted a talk show on Muslim Community Radio to raise the challenges families face when supporting members of their family who are terminally ill.

This was followed by a seminar entitled 'Dying Matters' in conjunction with Richard House Children's Hospice and St Joseph's Hospice. We explored the concept of dying within the context of Islam and how service provision within hospices can be religiously and culturally competent.

Eid Al-Adha was a celebratory occasion with staff and volunteers visiting Richard House to give presents to children. The event was marked by a keynote from Imam Abdul Qayum (Patron of RHCH) followed by fun activities for the children.

## Anchor House

Dr Muhammad Abdul Bari has been serving the homeless charity Anchor House as a patron for the past two years. We are committed to help other local charities and important causes that address social issues and provide practical support.

## ■ Hayaa Fitness

Our partnership with Hayaa Fitness ensures services in health, fitness and well-being are provided continuously



from the London Muslim Centre, complementing our Faith in Health initiative. Working in partnership with us and other local organisations, its services are available in special sessions for those with health problems.

### ■ Muslim Agency for Development and Enterprise (MADE in Europe)

The ELMT supported MADE's 'At Our Mothers Feet' campaign, which worked to raise awareness about global maternal health. A stall exhibited on the LMC concourse for a month showcasing their work.

### London Sustainability Exchange (LSX)

The ELM worked with the LSX in conjunction with MADE in Europe and the Women's Link project, to highlight the importance of protecting the environment and making use of water in a more sustainable way. A special sermon was delivered to disseminate information about the benefits of drinking tap water and using water without wastage.

### ■ Attestations and Nikah Registration

Many people come to the imams for attestations and references for various reasons including character references, proof of belonging to a religious community, clarification of issues related to work, etc. The Imams conduct Islamic marriages, and advise individuals, couples and families in issues relating to getting married.

### Charity Collections

The ELMT gives many worthy causes opportunities to make collections in the Mosque throughout the year. It also allocates slots in Ramadan, though it receives far more requests than it can accommodate. £43,755 was collected for various causes by foreign and UK based charities.

### ■ Faith in Health

Faith in Health road shows have proven to be highly successful in their aim to promote health information to the community, recruit Imams for the Faith in Health imam training and to evaluate Faith in Health's activities in the community. Faith in Health has worked with over 60 institutions including Mosques, GP surgeries,

pharmacies and hospitals this year in order to achieve these aims set.

Imam training has become one of the major strategic information dissemination mechanisms for Faith in Health for the community. Over 300 Imams and religious teachers have attended three separate Imam training sessions, including Mental Health, Tuberculosis and Dementia awareness.

Our Health Connex initiative has generated partnership work from many organisations including Tuberculosis TH, Alzheimer's Society and MIND. It has become so successful it has started satellites in Mosques and has reached over 2,000 community members.

Our Ramadan Campaign has grown from strength to strength. Since its inception in 2007, Faith in Health has been responsible from the Primary Care Trust to recreate the Department of Health's Ramadan booklet. Faith in Health developed a summarised booklet with a localised focus; it is used north London wide as part of a larger Ramadan campaign.

### ■ ELM Women's Link

ELM Women's Link (WL) is a support project providing culturally sensitive, faith based services to women both in the local community and across London.

Weekly activities include: advice sessions, a counselling service, and Mosque tours for schools and educational institutes.

WL gives training on Islamic parenting, and works in partnership with a range of organisations to both signpost and makes referrals to support our clients.

An annual International Women's Day event was held at the London Muslim Centre, and an open day for clients to find out more about WL services.

### ■ Al-Ihsan Marriage & Family Advice Service (AIMFAS)

AIMFAS has been re-located from the ELM to the LMC 4th Floor. A larger more accessible office has been provided to help them develop their services. Over the past year they have improved their website and increased their opening hours. They are currently

supporting 500 families, and the demand is gradually increasing.

### ■ Pro Bono in the LMC

Pro Bono in the LMC (PBLMC) is a voluntary, not-for-profit organisation that provides free help to those in need of legal advice and assistance. PBLMC offers its free legal surgeries from the 4th floor of the LMC; this allows for greater community access than was the case previously.

PBLMC has a number of volunteers who give their time and expertise for free; all the volunteers are legal professionals.

This year PBLMC invited the President of the International Court of Justice, H.E Hisashi Owada to speak at the LMC.

### ■ Somali Development Association (Al Shafie Institute)

The work of SDA continues to grow along with an excellent reputation beyond East London. The structured classes for the Somali community on various Islamic subjects along with Quran and Religious teachings are well attended.

SDA has played a significant role in the setting up and maintenance of Kulaal School in Somalia. The work is commendable and many under privileged children access basic education services.

### ■ North African Community Association (NACA)

The weekend school accommodates 100 students who follow a syllabus comprising of Arabic language, Quran, Hadith and Islamic studies. Other services include family counselling and reconciliation.

### Ex-Offenders Seminar

During 2011, the Street Project based in Brixton, which works to rehabilitate Muslim ex-offenders coming from out from prison, partnered with the ELMT to explore ways to help ex-offenders. As part of that work, two events were organised to highlight the issues faced by ex-offenders and their families. Ex-offenders also gave accounts of their own personal experiences and how they benefit from support from the community to help stop re-offending.



H.E Hisashi Owada, President of The International Court of Justice delivers a speech at the London Muslim Centre.



Members of the Mosque Management after the 5K Run 4 Your Mosque event.



Grand Mufti of Bosnia, Dr. Mustafa ef. Cerić at the ELMT Centenary Dinner.



Prof. Humayun Ansari launches the ELM Minutes Book (1910-1951).



Management talk to the Bangla Press about the Maryam Centre.



Rushanara Ali MP addressing guests at the ELMT Centenary Dinner.



Mayor of Tower Hamlets speaks at the Dying Matters Conference.



Over 600 people break fast at the London Muslim Centre during Ramadan.



Lord Michael Howard, Chairman of Help the Hospices on visit to the ELM.

Runners take part in the Mosque's fundraising initiative, Run 4 Your Mosque and raise over £250,000 through donations and sponsorship.



# Community Cohesion



Picture: Boris Jonson, Mayor of London with members of Faiths Forum for London.

## Exhibition and Open Days

There were three Exhibition and Open Days organised in the last year: in July and November 2011, and March 2012. These events are publicised widely with the aim of getting the real message of Islam to the wider community, making the Mosque more accessible to our neighbours and visitors and promoting community cohesion and engagement. About 1,000 people visited the Exhibition and Open Days. All visitors were presented basic information about Islam, and given guided tours of the Mosque and a gift pack containing an English translation of the Qur'an and our booklet It's about Islam, explaining the basic beliefs and practices of Islam.

## Visitors & School Visits

We host numerous schools, colleges and universities groups. Local schools, and even schools from other parts of London, visit the Mosque and Centre. Visitors are given the opportunity to see the main prayer hall in the Mosque and parts of the centre that deliver projects and services for the community. This year we facilitated 35 school tours. A total of 1,045 students were shown around the Mosque.

## Muslim Community Radio (MCR)

Broadcasting on 101.4FM, Muslim Community Radio in 2011 offered an excellent range of topical programmes, produced and presented by community volunteers. The Children's Show, Women's Hour, Community Focus,

Fiqh Show, all added to the spiritual atmosphere of Ramadan, bringing all corners of our community together.

## Visits by Dignitaries

Lord Michael Howard visited the East London Mosque and London Muslim Centre on the 18 January 2012. He was particularly interested in finding ways to get involved in the national campaign of 'Help the Hospices'. The President of the International Court of Justice, H.E. Hisashi Owada, appeared at an exclusive event at the London Muslim Centre, his only UK appearance before retirement. He spoke to a packed audience in the LMC on 20 January, giving a speech about the 'Evolving World' and the consolidation of the universality of international law. This event was organised by Pro Bono in the LMC. Cultural Ministers from the Japanese Embassy made a visit to witness the Friday prayers and talk about ways to gain mutual understanding about Islam, Muslims and the Japanese community.

## Media

The Mosque continues to place importance on media work, reflected in the full-time post of Media & Communications Officer. We constantly look for new ways to engage with a wider audience, such as the development of an 'app' for iPhones and Android that is scheduled for release in Ramadan (August 2012). We are working on a redesign of our website, which we hope will make it

easier to navigate. The weekly khutbah (sermon) continues to be uploaded to the website and split into Arabic, Bengali and English.

The Mosque's Facebook page has seen steady growth of following, with 13,000 'likes' as of April 2012. There is an international following of the page, which equates to a couple of thousand users who keep up to date with the Mosque's activities. The Mosque also has a Twitter account to inform 'followers' of important updates and activities.

The Mosque's YouTube channel has had over 47,000 views since its creation in 2010 and now has 62 subscribers to the channel. Most of the videos are embedded in the ELM website, where users can view the videos directly on the page.

A Flickr account was opened in 2011 to enable easier access to images for members of the press. Albums are now regularly created and updated. There have been numerous media enquiries from press in the UK and internationally, from film makers, photographers, journalists and students. There was particular interest around Ramadan and the Olympics, with numerous interviews arranged with the Mosque's Chairman who is a non-executive on the London Organising Committee of the Olympic and Paralympic Games.

## Working with other Organisations for Community Cohesion

The Mosque had several meetings with the Metropolitan Police Authority, the London Organising Committee of the Olympic and Paralympic Games, and Transport for London, to discuss the Olympics and Ramadan coinciding in 2012.

### United World

On Tuesday 12th June 2012 at the London Muslim Centre, a number of organisations large and small came together to discuss issues around poverty and social justice, both in the UK and globally. The United World event was organised by the London Muslim Centre, Oxfam and Pro-Bono in the LMC.

The main aim was for a diverse range of community and mainstream organisations, faith groups, community and business leaders and consular/high commissions to come together to help strengthen their ongoing work to help alleviate poverty. The forum also helped new partnerships to flourish and existing ones to strengthen.

### United East End

The English Defence League (EDL) planned to march in Tower Hamlets and past the East London Mosque on the 3 September 2011. However, a ban on marches was put in place, so they held a static demonstration in the City of London, near Aldgate Tube station. The Mosque worked closely with the United East End, a broad coalition of local campaign groups, community organisations, faith leaders and community activists. Several events were organised to oppose the EDL threat, including one at the London Muslim Centre.

On the day of the demonstration by the EDL, thousands of members of the community turned up to stage a counter-protest, including the Mayor of Tower Hamlets, councillors, local faith leaders and a broad range of ordinary people both Muslim and non-Muslim. Mosque stewards and volunteers were praised by the Acting Borough Commander for helping to maintain the peace in the borough.

## Community Cohesion Contingency Planning and Tension Monitoring Group (CCCPTMG)

The purpose of this group is to work with a cross section of key agencies in Tower Hamlets, including the police, local authority, housing associations, youth and community organisations, to address any issues that may potentially cause tension and disharmony in the community. Examples include: summer riots, threat of the English Defence League, gang conflicts, hate crimes, etc.

### Foundation to Advance Interfaith Trust and Harmony (FAITH)

ELMT has been working with Rabbi Mark Winer and his FAITH initiative to promote cross cultural discussion and understanding. We jointly organised a public seminar entitled 'Children of Abraham' on, and a discussion between Muslim, Jewish and Christian leaders on the subject of 'Religious Traditions and Modernity: Conflict or Opportunity?'

### Imams and Rabbis Council

The ELMT has been a founding member of the Imams and Rabbis Council. The Imams have participated in a number of events to promote closer working on common issues.

### All Faiths and None (AFAN)

The objective of AFAN is to provide resources that stimulate discussion between the faiths and humanists.

### Faith Forum for London

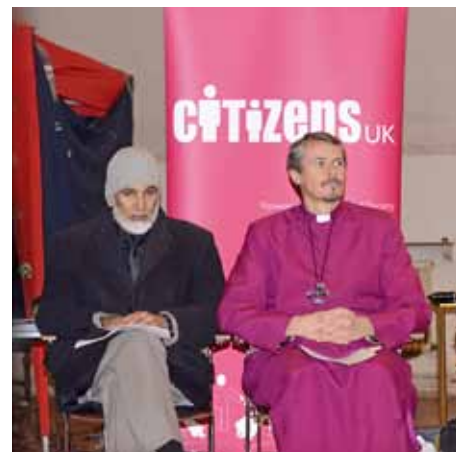
The Faith Forum for London empowers religious communities to work together for a better London, through conferences and seminars on topical issues as well as upskilling faith communities.

### One Society Many Cultures

The ELMT is working with One Society Many Cultures to promote diversity and multiculturalism in the UK.

### Criminal Records Bureau (CRB) Disclosure Service

The Mosque in its capacity as an Umbrella Body with the CRB continued to provide a Disclosure Service to community groups and organisations in East London. In the last twelve months the Mosque successfully processed 203 disclosures. The majority of disclosures were for local organisations.



Citizens UK event: Reclaiming our streets.



Interfaith event at the London Muslim Centre.



Community united against the EDL (Sept 2011).

*'The Mosque's Facebook page has seen steady growth of following, with 13,000 'likes' as of April 2012.'*

# Economic Development

## MADE in Europe

The offices of Faith Regen Foundation are now used by its sister organisation, Muslim Agency for Development and Enterprise (MADE) in Europe. MADE aims to inspire a grass-roots European youth movement of faith in action for tackling global poverty and injustice through volunteering, campaigning and education.

MADE has a number of programmes and campaigns based at the LMC, which include:

1. At Our Mothers Feet – an initiative to help pregnant women in Third World countries to access lifesaving medical care;
2. I Drink Tap – a campaign to reduce the wastage of plastic bottles;
3. Fair and Ethical Trade – to support farmers and producers to earn a sustainable living for their families.

MADE has provided capacity building services for Muslim NGO's and cross faith initiatives on international development.

## LMC Business Wing and Other Tenants

ELMT has a number of businesses as tenants in the LMC Business Wing and the Mosque shop.

The shop that remains at the front of the ELM is partitioned into two. Haji Taslim Funerals occupies one part; this second part is a book and clothes shop called Blackstone.

The following businesses are currently tenants of EMLT:

### LMC Business Wing 1st, 4th & 5th floors

- Muslim Aid

### LMC Business Wing 2nd floor

- AIC World Ltd
- Amanah Europe
- ASSIST & TH Homestart
- Media Mohol
- RCI (London) Ltd

### LMC Business Wing 3rd floor

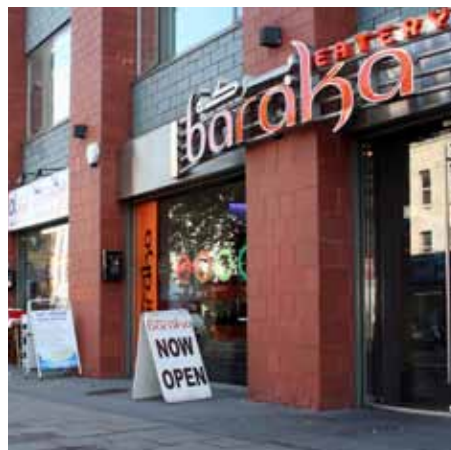
- Islamic Forum Europe

### LMC basement

- Hayaa Fitness
- LMC BW retail units
- Arabian Nites
- Baraka Eatery
- Our Choice

### ELM retail units

- Blackstone
- Haji Taslim Funerals



The ELMT nowadays has a high degree of sustainability due to income from the LMC Business Wing and several of the projects it runs. However, donations have always been an important part of our development, especially for important projects requiring large capital investment, such as the building of the LMC, and currently the building of Phase 2.

### Friday Collection

In addition to the regular small donations by worshippers, such as after the Friday prayer, ELMT has pioneered other fundraising methods, such as television appeals, and this year a sponsored run. These not only raise funds, but also enable the wider community to play an important role in the ELMT's development.

### British 10K Run

On 10 July 2011, six members of staff, management and volunteers from the ELMT took part in the British 10km London Run, held in central London. They raised over £11,500 for the Maryam Centre.

### Run 4 Your Mosque

One of the most prominent initiatives this year was Run 4 Your Mosque. Inspired by the British 10km London Run held months earlier, the Mosque decided to hold its own sponsored run in Tower Hamlets. A shorter 5km route was chosen, beginning at the Mosque and ending at Wennington Green in Mile End, after liaising with Tower Hamlets Council. The run was an outstanding success on a glorious day on Sunday 27 May 2012. The race was started by the builder of Phase 2, Mohamed Zabadne, who then took part along with his two sons. At the end of the race the Mayor of Tower Hamlets, Lutfur Rahman, congratulated all involved. This initiative raised over £200,000, including over £90,000 from member of the ELMT Iqbal Khan who ran on the day with his sons. As with other ELMT fundraising initiatives, we may have inspired others to organise their own fundraising runs. Due to its success, the ELMT now plans to make this an annual event.

### Al-Hambra Donors Wall

The Al-Hambra wall was conceived as a novel means to raise funds for Phase 2. The vision is a mosaic design along the 22 metre concourse wall inside the entrance concourse of the Maryam Centre, inspired by the pattern used on the outside of the buildings, which was itself taken from the Hall of the Ambassadors in Al-Hambra in Granada. This appeal has so far brought in over a thousand donors and almost £2 million.

### International fundraising

The ELMT has good links with Muslim countries which it wishes to maintain and improve. It has sought donations from Ministries of Awqaf in Saudi Arabia and Qatar, though the process of application is often lengthy.

Part of keeping good relations is looking after visitors to the UK when they come to the Mosque and Centre, who usually leave impressed by the tremendous range of activities undertaken from here.

A delegation from the ELMT, led by Imam Abdul Qayum, visited Saudi Arabia to show our plans for the Maryam Centre and look for fundraising opportunities. Their Ministry of Awqaf indicated that our application had been approved by them and had been sent to the King for his consideration.

### Ramadan and Eid

Regular collections are held throughout Ramadan. Some of these were reserved for collections for Phase 2 – the Maryam Centre. About £75,000 was collected during Ramadan.

On Eid Al-Fitr £24,390 was collected in donations for the Mosque; a further £23,952 was collected on Eid Al-Adha.

During Ramadan a cake and burger stall was run from the entrance of the partially built Maryam Centre. Run by a group of brothers who had done this for the LMC some years earlier, this popular initiative raised over £15,000.

As in previous years, the ELMT had a fundraising night on Channel S. Every night of Ramadan charities raise funds on this channel, but as in previous years the ELMT's fundraising brought the biggest response, raising over £500,000 in donations, pledges and Qard-e-Hasanah.

The other big fundraising night for the Mosque is the 27th night of Ramadan, the busiest night of the month as many people hope it will be Lailatul Qadr. This year the Mosque raised almost £600,000 on that night in donations, pledges and Qard-e-Hasanah.

# Premises



## ELM Phase 2 – the Maryam Centre

Work on Phase 2 continued until about September 2011, with almost all the windows installed and internal block work completed, and the flat roof put in place. Most of the scaffolding has been taken down, leaving just the hoist near the entrance. The new mosaic elevation now provides a stunning backdrop to the dome of the Mosque.

Work was then put on hold, partly to allow for further fundraising, but also because the contractor (Bamfords) was busily engaged on a hotel project next door.

Work recommenced in April 2012, with demolition at the rear of the Mosque to allow for construction of a two-storey link between the ELM, LMC and Maryam Centre.

## Renovation, Redecoration & Outfitting Works

The LMC library needed an archive room, and there was also a need for an additional project office. As the existing small consultation room was no longer required, two rooms were created without impacting too seriously on the available library space. The archive room is internal to the library, whereas the project room has independent access, and has become the new home for the Al-Ihsan Marriage Service.

A substantial rewiring of both the electrical and data networks in the ICT classroom was undertaken, not only making the room tidier and more robust, but also taking forward our plan for the school to have its own independent network.

As probably the most heavily used floor – the school followed by the madrasah every weekday, then other groups all weekend – the LMC second floor was redecorated just before the summer term.

An attempted burglary of the LMC Admin Office highlighted a vulnerability, so metal security grills were fitted to all the windows.

The last of the ELM's two old water heaters failed beyond repair, so a new heat exchanger system was fitted.

## Technical Services

The Mosque and centre are connected by a substantial network to meet the needs of staff, projects, schools and the library. A Technical Manager and Technician provide day-to-day support and continue to develop and expand our services. They are also responsible for developing systems for our expansion into Phase 2.

Our AV facilities are critical not only for prayers but also facilitating a wide variety of events. This includes the live relaying of prayers, recording, facilitating events of all sizes, and integrating with MCR and our Adhan Radio network. The Technical Manager is developing a specification for the new systems required for Phase 2, and looking at ways of enhancing delivery in our existing facilities, particularly streaming video from the Mimbar.



## LMC beehives

The ELM received a proposal from a beekeeper to site a beehive on the LMC roof. Khalil and his wife keep bees in their garden, and explained the benefits of urban beekeeping. The idea was well received by the management, so a hive was installed in April 2011.

The bees settled well, soon finding plentiful sources for local forage. By the early summer the beekeeper was able to harvest a rich, dark honey which generated lots of interest amongst worshippers. Indeed, the first few jars were auctioned as part of the fundraising. By autumn, as the hive was gradually being prepared for the winter months, a smaller second harvest of honey was taken, this time much lighter.

The bees survived the relatively mild winter very well, and by spring were active again. The beekeeper split the original hive to form a second hive, then split his own hive at home to create a third hive for the Mosque. All three hives are currently flourishing on the roof, the original even produced a small crop of honey before being split.

## Projects and User Groups of ELMT

The following projects/user groups are using the rooms and halls of LMC on a regular basis:

- Improving School Attendance and Attainment in Partnership
- Improving School Attendance and Attainment in Partnership
- Women's Link
- Al Mizan Tahfizul Madrasah
- ELM Evening Madrasah
- London East Academy
- Saturday Islamic School
- Al-Baseera Institute
- Somali Development Association
- North African Community Association
- Faith Regen Foundation
- MADE in Europe
- Bangladesh Forum Europe
- Al-Isharah – Deaf Muslim Project
- Pro Bono in the LMC
- Faith in Health
- Islamic Forum Europe
- Young Muslim Organisation UK
- Muslima UK
- Islam Awareness Project
- Junior Muslim Circle
- Rainbow House Play Group
- Al-Ihsan Marriage Service
- Council of Mosques - Tower Hamlets

- Way to Work
- Library
- Food4Thought Supplementary School
- School/College Link Project
- Association of Islamic Teachers UK

## Events Bookings in LMC

The LMC is a popular venue for weddings, conference, seminars, and other hires.

Managing the diverse use of the LMC is very challenging. It means balancing the needs of the schools, internal user groups and worshippers in Ramadan with the necessity to generate income to pay for the running of the centre.

Many organisations have discovered that the London Muslim Centre is the ideal venue for conferences, seminars, meetings, launches and exhibitions. These have ranged from public to private voluntary, community and faith organisations.

Below is a breakdown of the room hire according to the rooms hired and whether internal or external:

### External Hirers

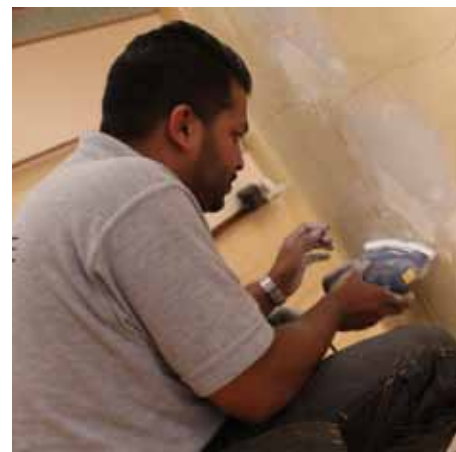
Ground Floor Hall	119
First Floor Hall	101
Seminar Room	35
Other Rooms	120

### Internal Bookings

Ground Floor Hall	44
First Floor Hall	45
Seminar Room	212
Other Rooms	225

Managing the diverse use of the LMC is very challenging. It means balancing the needs of the schools, internal user groups and worshippers in Ramadan with the necessity to generate income to pay for the running of the centre.

*'During Ramadan, the most busiest period in the year, the Mosque has a average footfall of 65,000 per week.'*



The LMC Hall pillars are repaired and painted.



LMC Honey Bees fly to and from the hive.



ELM, LMC and Maryam Centre complex.



The Maryam Centre's stunning mosaic tiles.

# History and Archives

Picture: Speakers from Preserving Mosque History Seminar

## Working with the National Archives

The Mosque has built a good relationship with the National Archives. Visits were made to the National Archives by Mosque staff to understand the protocols and procedures of preserving documents of historical relevance.

## ELMT Archives

The historical documents of the East London Mosque and London Muslim Centre have been assembled and placed in a secure room within the LMC library. The bulk of the documents have been transferred to eight steel cabinets, and work is in progress to organise them in date order. According to Professor Humayun Ansari, "the archives of the East London Mosque are rare, rich and unique. As an element of our national heritage, they are important both for the Muslim community and society as a whole."

## Preserving Mosque History

The LMC hosted an 'Exploring & Preserving Mosque Histories' seminar in April 2012, working in partnership with the 'Building on History: Religion in London' project of the Open University in partnership with the Arts and Humanities Research Council, the East London Mosque and the Muslim Council of Britain. Perhaps for the first time, representatives from about ten mosques in London met specifically to discuss matters relating to their institutions' records and archives.

Drawing on the archive documents, the ELM prepared an exhibition '100 Years of ELM' that was placed in the main

foyer of LMC and also displayed at external events such as 'Religious Diversity in Modern Britain: how can history inform the present?' held at Toynbee Hall in September 2011. The history of the LMC was featured in an article by Hamzah Foreman, 'Biography of a Mosque: the story of London's first Mosque, 1910–1942', published in *Arches Quarterly*.

## Camden Fifth Series: The Making of the East London Mosque

The Cambridge University Press published works by Professor Humayun Ansari who did extensive research into the Trust's early history from 1910 to 1951. The book was launched on the 9th November 2011; exactly 101 years to the day of the first meeting of organised for the London Mosque Fund.

The book is a compilation of minutes and other related documents, which takes the readers on a journey of how the newly emerging confident Muslim community of the early twentieth century and major figures of the British establishment reached out to one another. The launch was attended by various guests and academics who have a particularly interest in the British Muslim history. Professor Ansari gave a lecture on British Muslim history, talking about how the first Muslim's came to be in the British Isles. Every single copy of the book sold out on the evening with each copy hand signed by the Professor Ansari. The Minutes Book is part of the prestigious Royal Historical Society's Camden series, which publishes early historical and literary materials, both unpublished manuscripts and new editions of rare printed books.



# Timeline of the Trust

## A brief historical timeline of the East London Mosque Trust:

**1910:** On the 9th of November 1910, the Right Honourable Syed Ameer Ali arranged a meeting at the Ritz Hotel under the Chairmanship of the His Highness Sir Sultan Mohammad Shah Aga Khan III. The meeting resolved to establish a fund for the purpose of building a Mosque and Islamic Cultural Centre in London.



Picture: The original minutes book of the 'London Mosque Fund'.

**1940:** Three houses purchased for the Mosque and Islamic Cultural Centre on Commercial Road.

**1941:** Official opening of the East London Mosque. The Jumu'ah prayer was lead by His Excellency Sheikh Hafiz Wahba, Ambassador of Saudi Arabia.

**1975:** The Greater London Council (GLC) under compulsory purchase order acquired the three buildings in Commercial Road and in return provided land and temporary buildings on Whitechapel Road, London E1.

**1983:** The foundation stone of the East London Mosque was laid, this was followed by a generous donation by HRH King Fahd of the Kingdom of Saudi Arabia.



Picture: A prayer is made as the foundation stone is laid for the ELM.

**1985:** The official opening of the newly built East London Mosque by Sheikh Abdullah bin Subail, Imam of Masjidul Haram, Makkah on Friday 12th July 1985.

**1999:** East London Mosque raised £600,000 from the local community to buy the adjacent disused land to develop its extension programme.

**2000:** The land was officially purchased and planning began in earnest to build the extension programme to house much needed community facilities.

**2002:** ELM acquires full planning permission for the extension programme titled the 'London Muslim Centre' from the Local Council.

**2004:** Opening of the London Muslim Centre, 11th June 2004, where over 15,000 people congregated to pray with Sheikh Abdur Rahman as-Sudais, Imam of Makkah.

**2006:** Establishment of employment and training projects.

**2008:** Planning, Design and Consultation for the proposed new development of the East London Mosque.



Picture: Shk. Abdur Rahman with Imam and Chairman of ELMT.

**2009:** Sheikh Abdur Rahman as-Sudais, Imam of Masjidul Haram, Makkah leads groundbreaking ceremony in August 2009. This marks the expansion of the Mosque and women's facilities, with the building of the Maryam Centre.

**2010:** Centenary celebrations marking 100 years of the East London Mosque Trust.

**2011:** During Ramadan 2011, the Maryam Centre is 50% complete.



Picture: The new Maryam Centre as of July 2011.

# Conclusion



We thank Allah for the blessings He has bestowed upon us. And surely we are not grateful to our Lord unless we can be grateful to the people. On behalf of the Trustees and Members of the ELMT, I want to thank the worshippers who continue to give to this House of Allah, despite the recession; the people who stand with us in the face of Islamophobia and injustice, despite the threat of fascists and racists; the staff and volunteers who selflessly give their time and immense energy, despite the austerity measures.

Fundraising for our new development, the Maryam Centre, slowed down in the wake of economic challenges. This inevitably caused delays to the building schedule; however, I remain hopeful that our vision to provide excellent services for women will materialise very soon. If the works continue at the current pace we should be on schedule to open by Ramadan 2013, insha'Allah.

While the organisation has delivered excellent services as per its priority objectives, it is unfortunate that some of our resources are diverted unnecessarily into addressing the extremism of the far right, be it in the media or the fascists who run amok on our streets.

I am pleased that partnerships with Richard House, St Josephs' and Oxfam will yield new ways of engaging and working with each other so that people who are most at need are responded to.

I commend the work of the police and local authority, as they demonstrated real care for the community over the past year, which has been nothing short of difficult. May Allah give us the resolve to continue to support each other and work for a better society.



Habibur Rahman  
Secretary

## Management Committee (17 July 2011 to 29 Sept 2012)

The Trustees of the East London Mosque Trust during the session, who act as the Management Committee, were:

1. Dr Muhammad Abdul Bari, *Chairman*
2. Muhammad Siddique, *Vice-Chairman*
3. Ayub Khan, *Vice-Chairman*
4. Muhammad Habibur Rahman, *Secretary*
5. Sirajul Islam, *Treasurer*
6. Ismail Jama Salah
7. Mohammad Abdul Malik
8. Mohammed Abdur Rahim Kamaly
9. Muhammad Rahmani
10. Rahela Choudhury
11. Sayeda Anzumara Begum

12. Ahmad Amir Ali
13. Muhammad Mustaq Ahmed
14. Yaqoob Johnson (*July to January*)
15. Azizur Rahman (*July to November*)

## Women's Advisory Board (17 July 2011 to 29 Sept 2012)

1. Rahela Choudhury
2. Mahera Ruby
3. Anjumara Begum
4. Salma Siddiq
5. Shamsun Nahar Ruby



# Financial Statements

year ended 31 March 2012

INCOME AND EXPENDITURE	Restricted £	Unrestricted £	Total 2012 £	Total 2011 £
<b>Incoming Resources</b>				
Donations	65,511	1,204,285	1,269,796	1,511,611
Rent and Service Charges	-	615,745	615,745	687,997
Educational Projects	892,355	-	892,355	661,096
ELM - LMC Projects	150,152	-	150,152	256,297
Other Income	-	166,398	166,398	145,830
	1,108,018	1,986,428	3,094,446	3,262,831
<b>Resources Expended</b>				
ELM - LMC Projects: Direct Charitable	192,626	-	192,626	378,088
Educational Projects: Direct Charitable	798,672	-	798,672	651,849
Other Expenses: Direct Charitable	59,478	949,273	1,008,751	1,101,811
Management and Administration	-	258,805	258,805	261,222
Total Resources Expended	1,050,776	1,208,078	2,258,854	2,392,970
Net Income / Deficit for the Year	57,242	778,350	835,592	869,861
Funds as at 1 April 2011	2,794,492	12,714,212	15,508,704	14,638,843
Funds as at 31 March 2012	2,851,734	13,492,562	16,344,296	15,508,704

BALANCE SHEET		Total 2012 £	Total 2011 £
<b>Fixed Assets</b>			
Freehold Properties at Cost		3,031,226	2,851,729
London Muslim Centre & Phase II		14,590,234	13,738,969
Long Leasehold		658,048	658,048
Fixture, Fittings and Equipment		283,399	289,336
		18,562,907	17,538,082
<b>Current Assets</b>			
Stock of Radio receiver	2,649		0
Debtors & Prepayments	234,979		240,200
Cash at Bank & In-Hand	2,737,507		1,716,942
	2,975,135		1,957,142
<b>Creditors</b>			
Amount Falling Due within One Year	1,192,838		890,790
<b>Net Current Assets/(Liabilities)</b>		1,782,297	1,066,352
Total Assets Less Current Liabilities		20,345,204	18,604,434
<b>Creditors</b>			
Amount Falling Due > One Year		4,000,908	3,095,730
Total Net Assets		16,344,296	15,508,704
Funds	Restricted	2,851,734	2,794,492
Total Fund	Unrestricted	13,492,562	12,714,212
		16,344,296	15,508,704

Approved by the Board of Trustees on 29 September 2012 and signed on it's behalf by:



Mr Sirajul Islam  
Trustee & Treasurer



Dr MA Bari  
Trustee & Chairman



# Annual Report

## 2011–12



East London Mosque & London Muslim Centre  
46-92 Whitechapel Road, London E1 1JQ, United Kingdom

Telephone: +44 (0)20 7650 3000  
Facsimile: +44 (0)20 7650 3001  
Email: [info@eastlondonmosque.org.uk](mailto:info@eastlondonmosque.org.uk)

Website: [www.eastlondonmosque.org.uk](http://www.eastlondonmosque.org.uk)  
[www.londonmuslimcentre.org.uk](http://www.londonmuslimcentre.org.uk)

Charity Reg: 1122613