

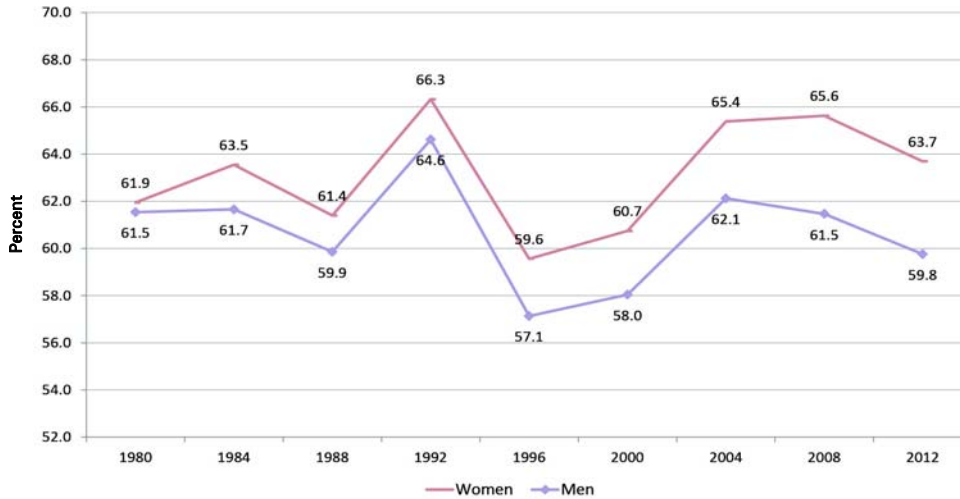
**GENDER DIFFERENCES IN VOTER TURNOUT \***

In recent elections, voter turnout rates for women have equaled or exceeded voter turnout rates for men. Women, who constitute more than half the population, have cast between four and seven million more votes than men in recent elections.

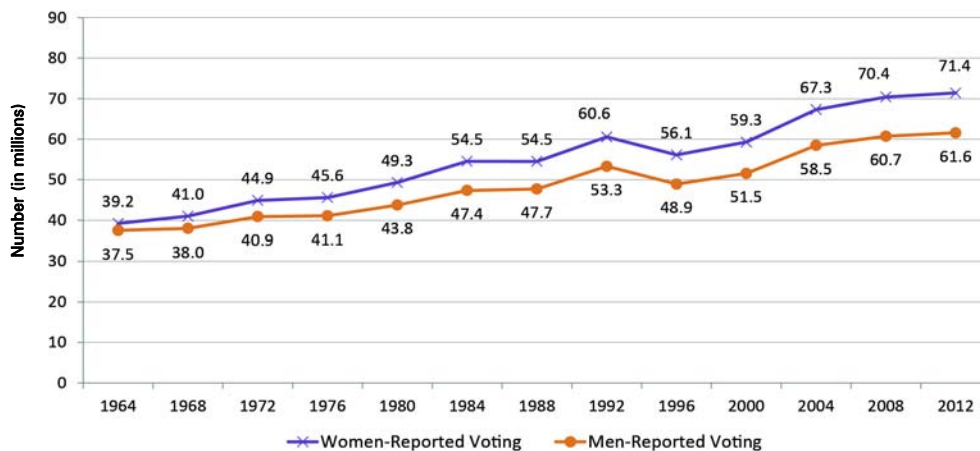
**VOTER TURNOUT IN PRESIDENTIAL ELECTIONS**

In every presidential election since 1980, the proportion of eligible female adults who voted has exceeded the proportion of eligible male adults who voted (see Figure 1). In all presidential elections prior to 1980, the voter turnout rate for women was lower than the rate for men. The number of female voters has exceeded the number of male voters in every presidential election since 1964 (see Figure 2).

**Figure 1. Proportion of Eligible Adult Population Who Reported Voting**



**Figure 2. Number Who Reported Voting**



\* Data are from the U.S. Bureau of the Census *Current Population Reports, Series P-20, "Voting and Registration in the Election of November 1964"* and subsequent reports for all years through 2012. These figures are from post-election responses to supplementary questions in the monthly Current Population Survey for a sample of households in November of each election year. Respondents to the survey report their own voting activity and that of other members of their household. The sample systematically over-reports both voting and registration by several million people. In years prior to 1996, the questions used to determine citizenship measures were asked in different ways and the U.S. Bureau of the Census advises some caution in direct comparison across these years.

In years prior to 2000, the U.S. Bureau of the Census listed only three categories under "Race": Black, Hispanic and White. Their figures double-counted some Hispanic individuals who were also included as Black or White; thus, for years prior to 2000, the "number who reported voting" figure in the first table on this fact sheet is lower than the total reached by adding the "number who reported voting" figures for Black, Hispanic and White voters in the second table. Beginning in 2000, the Bureau of the Census separates out non-Hispanic Black voters and non-Hispanic White voters from Hispanic voters; the post-2000 figures also include Asian/Pacific Islanders for the first time. Hence, the pre-2000 numbers are less precise and are not directly comparable to the post-2000 figures.

**A note to users of this information: Please credit the Center for American Women and Politics (CAWP), Eagleton Institute of Politics, Rutgers University.**

## GENDER DIFFERENCES IN VOTER TURNOUT (CONTINUED)

Among younger citizens (18-44), a higher proportion of women than men voted in 2012, 2008, 2004 and 2000; the pattern is reversed among older voters (75 and up).

|             | % of Eligible Adult Population Who Reported Voting |      | Number Who Reported Voting (in millions) |      |             | % of Eligible Adult Population Who Reported Voting |      | Number Who Reported Voting (in millions) |      |
|-------------|--|------|--|------|-------------|--|------|--|------|
|             | Women  | Men  | Women                                    | Men  |             | Women  | Men  | Women                                    | Men  |
| <b>2012</b> |  |      |  |      | <b>2008</b> |  |      |  |      |
| 18-24 yrs.  | 44.5   | 37.9 | 6.2                                      | 5.2  | 18-24 yrs.  | 52.0   | 45.1 | 6.7                                      | 5.8  |
| 25-44 yrs.  | 60.5   | 53.9 | 21.6                                     | 18.3 | 25-44 yrs.  | 63.1   | 56.8 | 22.7                                     | 19.6 |
| 45-64 yrs.  | 69.5   | 66.1 | 27.5                                     | 24.5 | 45-64 yrs.  | 71.0   | 67.2 | 26.8                                     | 23.9 |
| 65-74 yrs.  | 72.7   | 74.4 | 9.0                                      | 8.2  | 65-74 yrs.  | 72.6   | 72.2 | 7.7                                      | 6.5  |
| 75 yrs. up  | 67.6   | 73.6 | 7.1                                      | 5.3  | 75 yrs. up  | 64.9   | 72.2 | 6.5                                      | 4.8  |
| <b>2004</b> |  |      |  |      | <b>2000</b> |  |      |  |      |
| 18-24 yrs.  | 49.7   | 43.8 | 6.2                                      | 5.4  | 18-24 yrs.  | 38.2   | 34.0 | 4.6                                      | 4.0  |
| 25-44 yrs.  | 63.0   | 57.2 | 22.9                                     | 19.9 | 25-44 yrs.  | 58.3   | 53.7 | 21.8                                     | 19.0 |
| 45-64 yrs.  | 71.2   | 69.1 | 24.8                                     | 22.5 | 45-64 yrs.  | 69.1   | 66.4 | 20.7                                     | 18.6 |
| 65-74 yrs.  | 71.8   | 74.9 | 6.9                                      | 6.1  | 65-74 yrs.  | 71.3   | 73.4 | 6.7                                      | 5.8  |
| 75 yrs. up  | 65.8   | 72.8 | 6.4                                      | 4.5  | 75 yrs. up  | 62.3   | 73.0 | 5.5                                      | 4.2  |

Among Asians/Pacific Islanders, Blacks, Hispanics, and Whites, the number of female voters in recent elections has exceeded the number of male voters. While the difference in voter turnout rates between the sexes is greatest for Blacks, women have voted at higher rates than men among Blacks, Hispanics, and Whites in the last eight presidential elections; in 2000, the first year for which data are available, Asian/Pacific Islander men voted at a slightly higher rate than Asian/Pacific Islander women. Since 2004, Asian/Pacific Islander women have voted at rates equal to or higher than rates for Asian/Pacific Islander men.

NOTE: The U.S. Census Bureau has revised race and ethnicity categorizations over time, making direct comparisons by category difficult from year to year. The categories listed here have been chosen to try to best encompass the same populations from year to year. Since 2004, the U.S. Census Bureau reported each racial category "alone" or "in combination." The numbers reported here reflect only the "alone" categories. For more information about these categories, see [www.census.gov/population/race/](http://www.census.gov/population/race/).

|                        | % Eligible Voting Population |      | Number Who Reported Voting |              |
|------------------------|------------------------------|------|----------------------------|--------------|
|                        | Women                        | Men  | Women                      | Men          |
| <b>2012</b>            |                              |      |                            |              |
| Asian/Pacific Islander | 48.5                         | 46.0 | 2.1 million                | 1.8 million  |
| Black                  | 70.1                         | 61.4 | 10.4 million               | 7.4 million  |
| Hispanic               | 49.8                         | 46.0 | 6.0 million                | 5.2 million  |
| White, non-Hispanic    | 65.6                         | 62.6 | 51.8 million               | 46.3 million |
| <b>2008</b>            |                              |      |                            |              |
| Asian/Pacific Islander | 47.5                         | 47.6 | 1.8 million                | 1.6 million  |
| Black                  | 68.1                         | 60.5 | 9.4 million                | 6.7 million  |
| Hispanic               | 51.8                         | 47.9 | 5.1 million                | 4.6 million  |
| White, non-Hispanic    | 67.9                         | 64.2 | 53.1 million               | 47.0 million |
| <b>2004</b>            |                              |      |                            |              |
| Asian/Pacific Islander | 46.2                         | 42.0 | 1.5 million                | 1.3 million  |
| Black                  | 63.4                         | 55.8 | 8.3 million                | 5.7 million  |
| Hispanic               | 49.4                         | 44.8 | 4.1 million                | 3.5 million  |
| White, non-Hispanic    | 68.4                         | 65.9 | 52.5 million               | 47.1 million |
| <b>2000</b>            |                              |      |                            |              |
| Asian/Pacific Islander | 42.5                         | 44.3 | 1.1 million                | 1.0 million  |
| Black                  | 59.7                         | 53.0 | 7.6 million                | 5.3 million  |
| Hispanic               | 46.1                         | 43.9 | 3.3 million                | 2.7 million  |
| White, non-Hispanic    | 63.0                         | 60.6 | 47.1 million               | 42.4 million |
| <b>1996</b>            |                              |      |                            |              |
| Black                  | 56.1                         | 49.1 | 6.7 million                | 4.7 million  |
| Hispanic               | 46.4                         | 41.3 | 2.7 million                | 2.2 million  |
| White                  | 60.6                         | 58.5 | 48.1 million               | 43.1 million |
| <b>1992</b>            |                              |      |                            |              |
| Black                  | 59.2                         | 53.9 | 6.6 million                | 4.8 million  |
| Hispanic               | 49.4                         | 47.0 | 2.3 million                | 1.9 million  |
| White                  | 67.8                         | 66.4 | 52.9 million               | 47.6 million |
| <b>1988</b>            |                              |      |                            |              |
| Black                  | 55.9                         | 50.5 | 5.9 million                | 4.2 million  |
| Hispanic               | 46.3                         | 45.5 | 2.0 million                | 1.8 million  |
| White                  | 62.5                         | 61.2 | 47.7 million               | 42.7 million |
| <b>1984</b>            |                              |      |                            |              |
| Black                  | 60.7                         | 54.1 | 6.1 million                | 4.2 million  |
| Hispanic               | 48.6                         | 47.2 | 1.7 million                | 1.4 million  |
| White                  | 64.2                         | 62.8 | 47.7 million               | 42.4 million |

## GENDER DIFFERENCES IN VOTER TURNOUT (CONTINUED)

### VOTER TURNOUT IN NON-PRESIDENTIAL ELECTIONS

Since 1986, the proportion of eligible female adults who voted has exceeded the proportion of eligible male adults who voted, reversing the historical pattern of higher turnout rates for men than for women.

| Non-presidential<br>Election Year | % of Eligible Voting Population |            | Number              |              |
|-----------------------------------|---------------------------------|------------|---------------------|--------------|
|                                   | Who Reported Voting             |            | Who Reported Voting |              |
|                                   | <u>Women</u>                    | <u>Men</u> | <u>Women</u>        | <u>Men</u>   |
| 2014                              | 43.0                            | 40.8       | 49.2 million        | 43.0 million |
| 2010                              | 46.2                            | 44.8       | 50.6 million        | 45.4 million |
| 2006                              | 48.6                            | 46.9       | 51.0 million        | 45.1 million |
| 2002                              | 46.6                            | 45.6       | 47.1 million        | 41.8 million |
| 1998                              | 45.7                            | 44.9       | 43.7 million        | 39.4 million |
| 1994                              | 48.5                            | 48.2       | 45.0 million        | 40.7 million |
| 1990                              | 48.0                            | 47.5       | 43.3 million        | 38.7 million |
| 1986                              | 48.4                            | 48.2       | 42.2 million        | 37.7 million |
| 1982                              | 50.5                            | 50.9       | 42.3 million        | 38.0 million |
| 1978                              | 47.0                            | 48.2       | 36.3 million        | 33.3 million |
| 1974                              | N/A                             | N/A        | 32.5 million        | 30.7 million |
| 1970                              | N/A                             | N/A        | 33.8 million        | 32.0 million |
| 1966                              | N/A                             | N/A        | 31.8 million        | 30.7 million |

### VOTER REGISTRATION

Women outnumber men among registered voters.

| Number Reporting They Are Registered Voters |              |              |      |              |              |
|---|--------------|--------------|------|--------------|--------------|
|   | <u>Women</u> | <u>Men</u>   |      | <u>Women</u> | <u>Men</u>   |
| 2014  | 76.0 million | 66.1 million | 1996 | 68.0 million | 59.7 million |
| 2012  | 81.7 million | 71.4 million | 1994 | 63.3 million | 55.7 million |
| 2010  | 72.9 million | 64.9 million | 1992 | 67.3 million | 59.3 million |
| 2008  | 78.1 million | 68.2 million | 1990 | 60.2 million | 53.0 million |
| 2006  | 72.4 million | 63.4 million | 1988 | 63.5 million | 55.1 million |
| 2004  | 75.7 million | 66.4 million | 1986 | 59.5 million | 52.2 million |
| 2002  | 68.7 million | 59.4 million | 1984 | 62.1 million | 54.0 million |
| 2000  | 69.2 million | 60.4 million | 1982 | 56.3 million | 49.7 million |
| 1998  | 65.4 million | 57.7 million | 1980 | 55.7 million | 49.3 million |