



A300-600

Aircraft Rescue and Fire Fighting Chart ARFC

The content of this document is the property of Airbus S.A.S.
It is supplied in confidence and commercial security on its
contents must be maintained.
It must not be used for any purpose other than that for which it is
supplied, nor may information contained in it be disclosed to un-
authorized persons. It must not be reproduced in whole or in part
without permission in writing from the owners of the copyright.
Requests for reproduction of any data in this document and the
media authorized for it must be addressed to Airbus.

© Airbus S.A.S. 2002. All rights reserved.

AIRBUS S.A.S.
31707 BLAGNAC CEDEX, FRANCE
CUSTOMER SERVICES
TECHNICAL DATA SUPPORT AND SERVICES
PRINTED IN FRANCE
©AIRBUS S.A.S. 2002
ALL RIGHTS RESERVED

AN EADS COMPANY

 **A300-600 All Models**
AIRCRAFT RESCUE AND
FIRE FIGHTING CHART

NOTE

THIS CHART GIVES THE GENERAL LAYOUT OF THE A300-600 ALL MODELS STANDARD VERSION.
THE NUMBER AND ARRANGEMENT OF THE INDIVIDUAL ITEMS VARY WITH THE CUSTOMERS.

ISSUED BY:

AIRBUS S.A.S.
CUSTOMER SERVICES
TECHNICAL DATA SUPPORT AND SERVICES
31707 BLAGNAC CEDEX
FRANCE

REVISION DATE: JUNE 2007
REFERENCE : C_RF_000000_1_A300600

 **A300-600 All Models**
AIRCRAFT RESCUE AND FIRE FIGHTING CHART

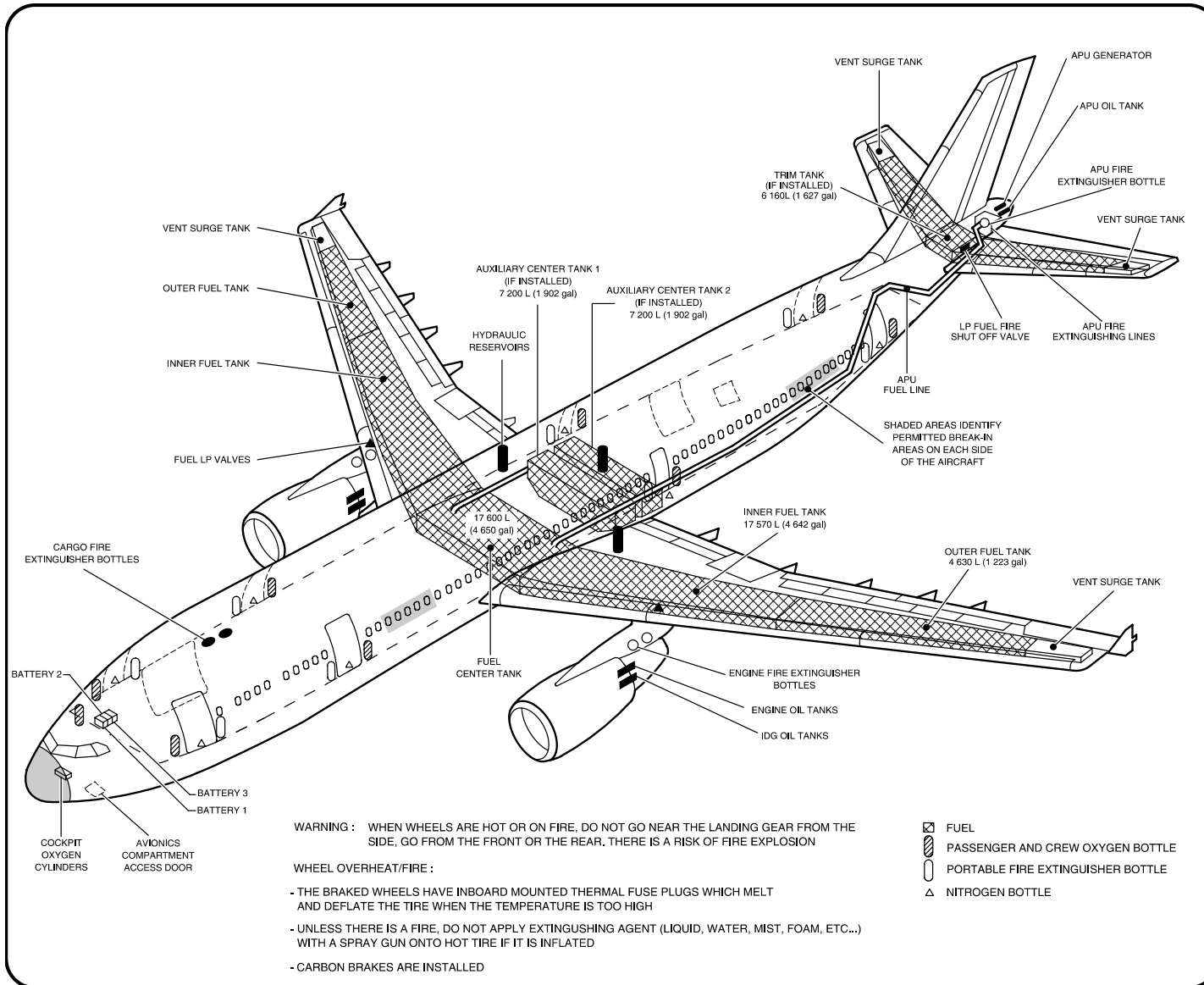
 **A300-600 All Models**
AIRCRAFT RESCUE AND
FIRE FIGHTING CHART

TABLE OF CONTENTS

Page 1	Highly Flammable Materials and Hazardous Components - Location
Page 2	Composite Materials - Location
Page 3	Landing Gear Ground Lock Safety Pin - Installation
Page 4	Interphone Jack Sockets - Location
Page 5	Evacuation/Escape Slide/Raft - Location
Page 6	Passenger/Crew Doors and Emergency Exits - Opening
Page 7	Cargo Doors - Opening
Page 8	Structural Break-in Points - Principle
Page 9	Batteries and Control Panel - Location
Page 10	Emergency Exit Light Control Panel - Location
Page 11	Engine and APU Controls and FIRE Panels - Location
Page 12	Bulk Cargo Compartment Door Control
Page 13	APU Compartment Access
Page 14	Aircraft Ground Clearances




A300-600 All Models

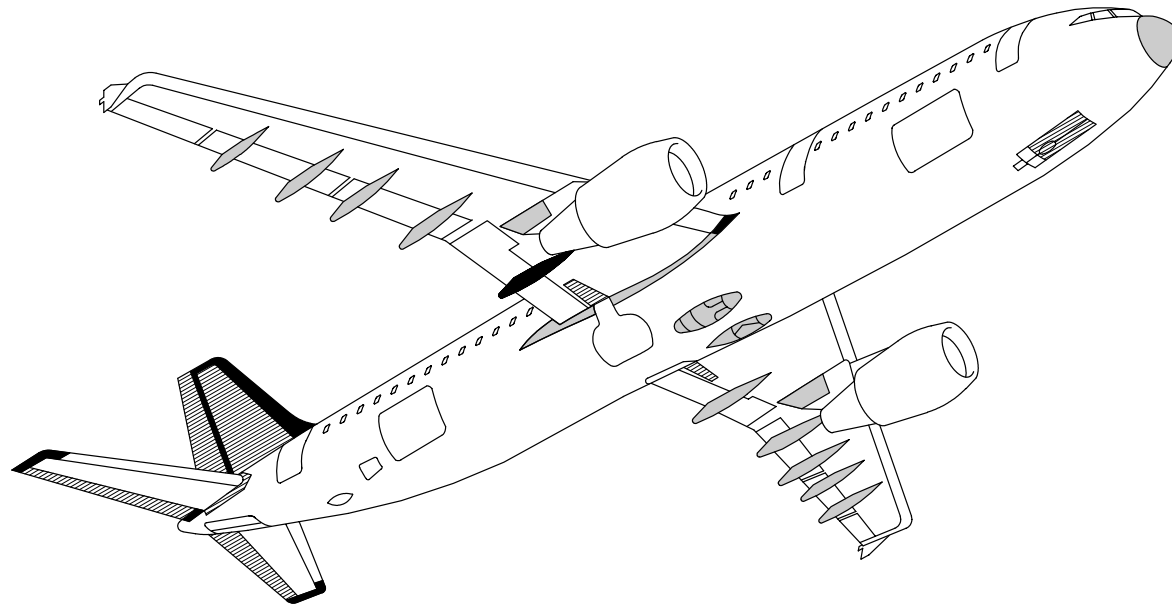
AIRCRAFT RESCUE AND FIRE FIGHTING CHART



Highly Flammable Materials and Hazardous Components - Location

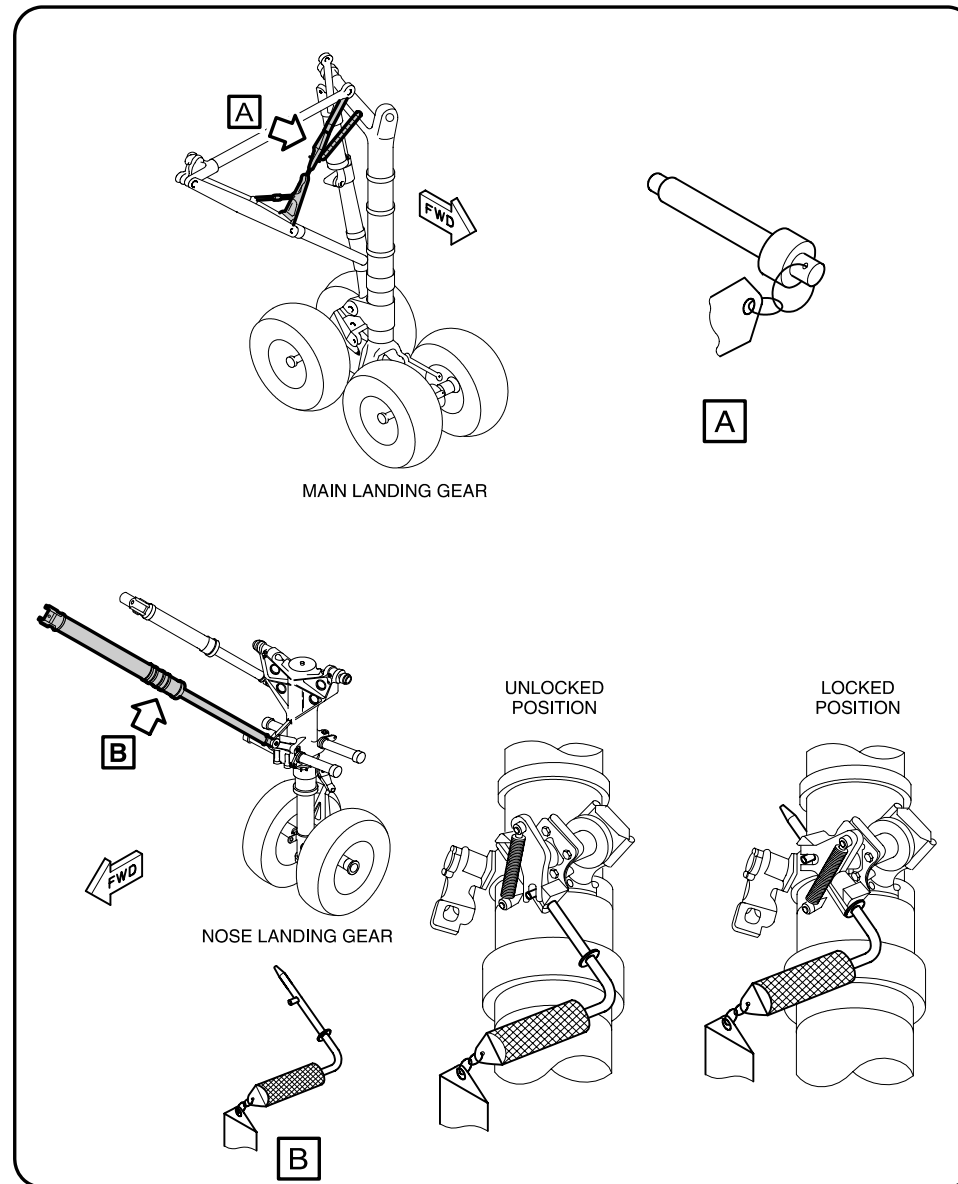
A300-600 All Models AIRCRAFT RESCUE AND FIRE FIGHTING CHART

-  Carbon Fiber Reinforced Plastic (CFRP)
-  Glass Fiber Reinforced Plastic (GFRP)
-  Aramid Fiber Reinforced Plastic (AFRP)



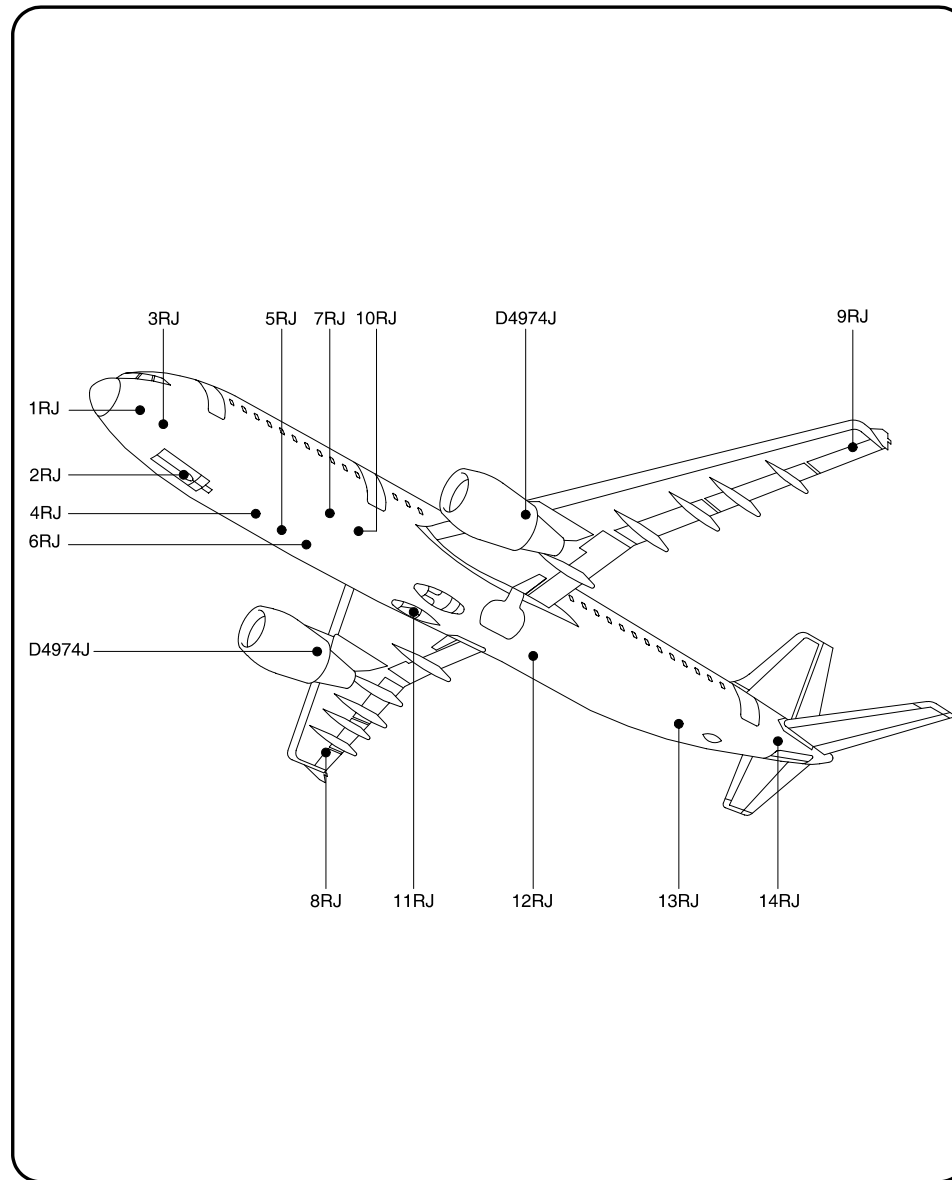
Composite Materials - Location

A300-600 All Models
AIRCRAFT RESCUE AND
FIRE FIGHTING CHART



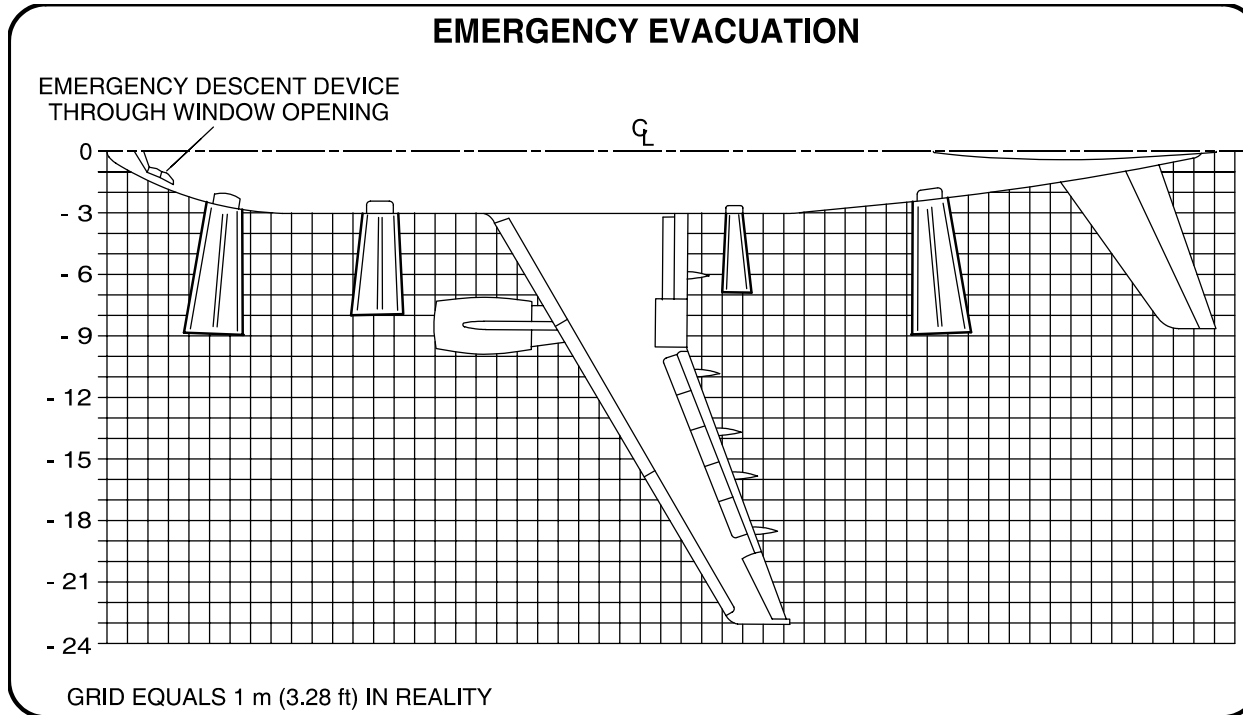
Landing Gear Ground Lock Safety Pin - Installation

A300-600 All Models
AIRCRAFT RESCUE AND
FIRE FIGHTING CHART



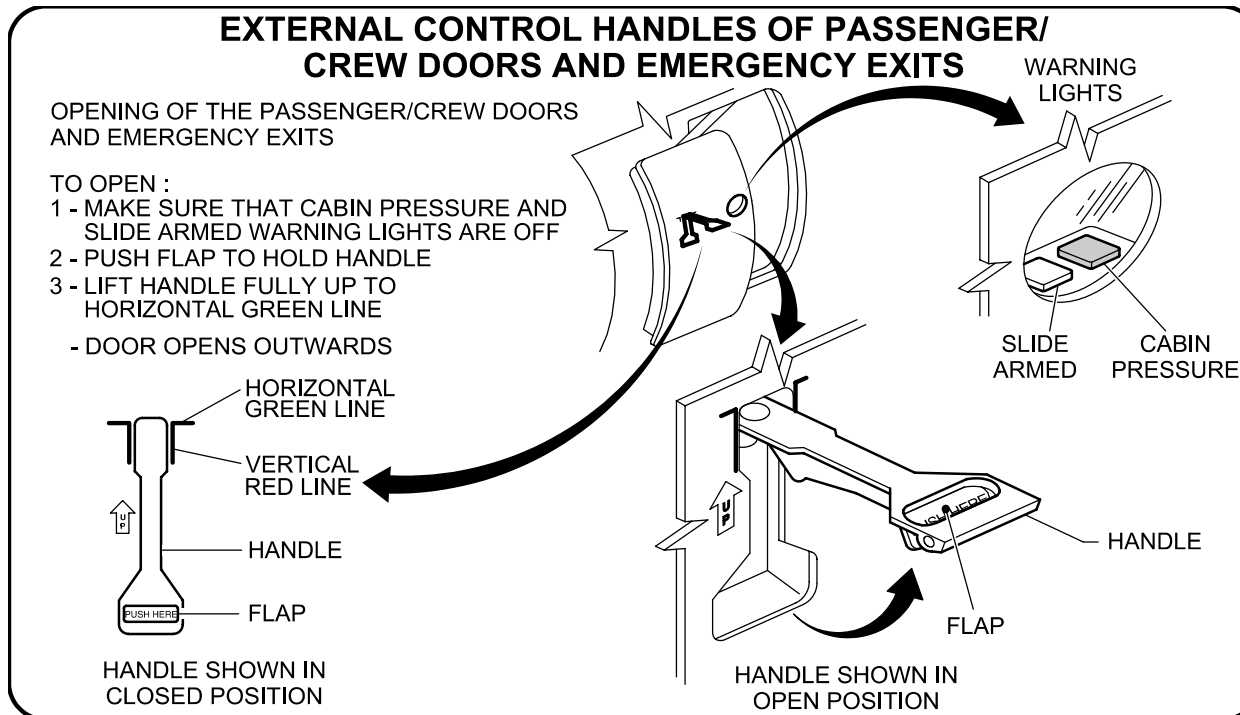
Interphone Jack Sockets - Location

A300-600 All Models
AIRCRAFT RESCUE AND
FIRE FIGHTING CHART



Evacuation/Escape Slide/Raft - Location

A300-600 All Models
AIRCRAFT RESCUE AND
FIRE FIGHTING CHART

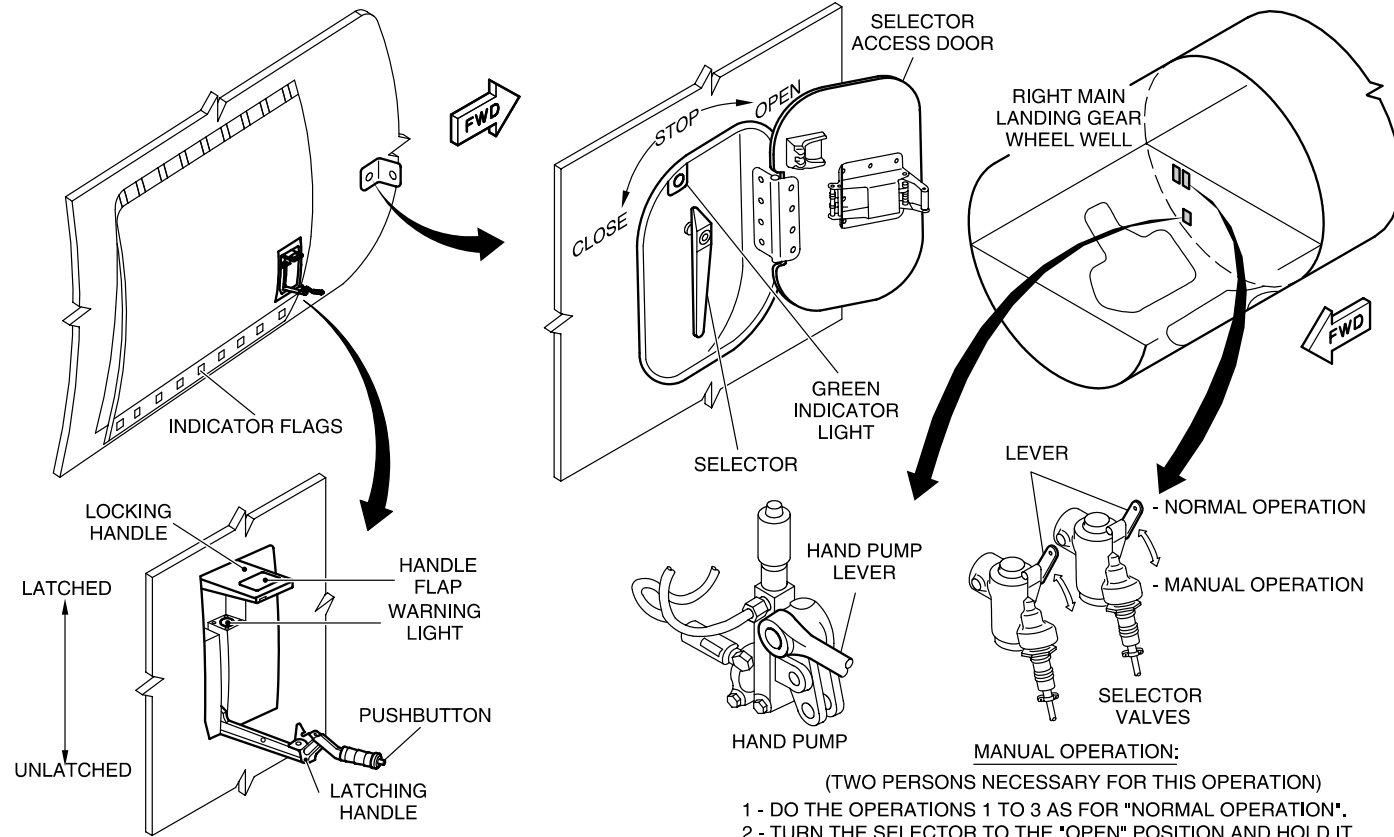


Passenger/Crew Doors and Emergency Exits - Opening

A300-600 All Models

AIRCRAFT RESCUE AND FIRE FIGHTING CHART

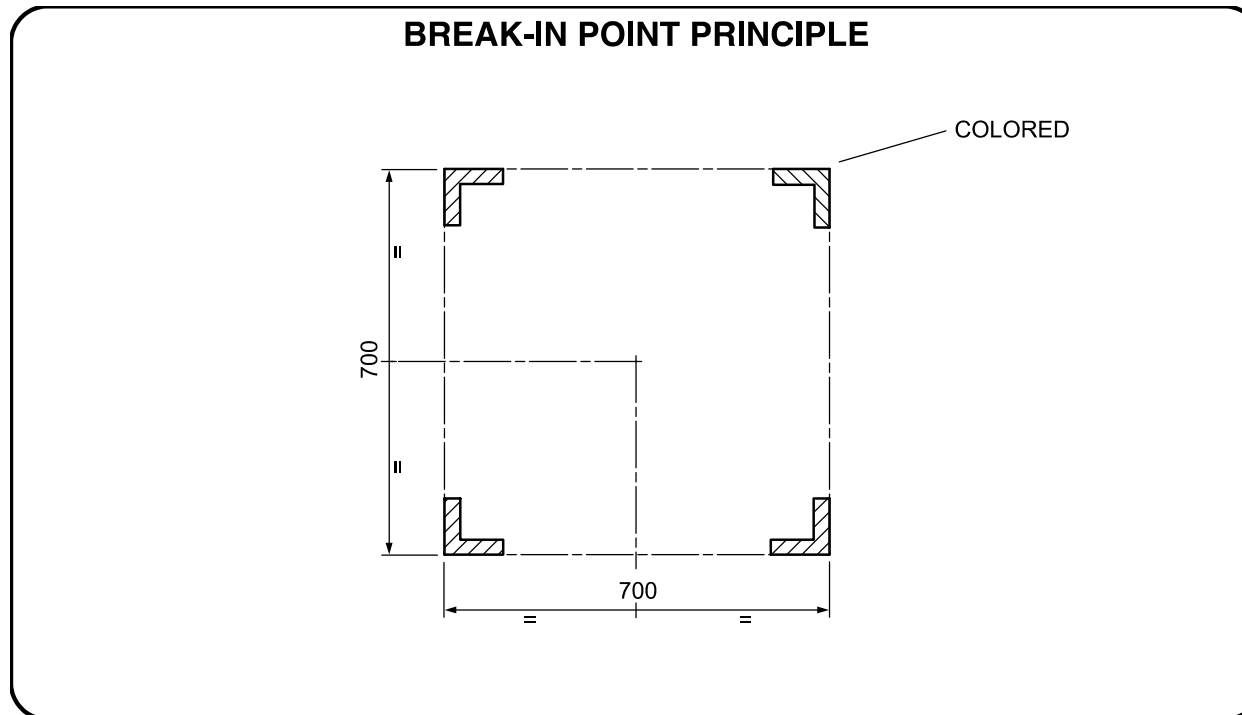
FWD AND AFT CARGO COMPARTMENT DOOR CONTROLS



- NORMAL OPERATION:**
- 1 - PUSH THE HANDLE FLAP IN AND PULL THE LOCKING HANDLE TO THE "UNLOCKED" POSITION. ALL INDICATOR FLAGS ARE OUT.
 - 2 - PUSH THE PUSHBUTTON ON THE TOP OF THE LATCHING HANDLE AND PULL IT TO THE "UNLATCHED" POSITION.
 - 3 - OPEN THE SELECTOR ACCESS DOOR.
 - 4 - TURN THE SELECTOR TO THE "OPEN" POSITION AND HOLD IT UNTIL THE GREEN INDICATOR LIGHT COMES ON. (DOOR FULLY OPEN AND LOCKED).
 - 5 - RELEASE THE SELECTOR. THE SELECTOR GOES BACK TO THE "STOP" POSITION.

- MANUAL OPERATION:**
(TWO PERSONS NECESSARY FOR THIS OPERATION)
- 1 - DO THE OPERATIONS 1 TO 3 AS FOR "NORMAL OPERATION".
 - 2 - TURN THE SELECTOR TO THE "OPEN" POSITION AND HOLD IT DURING OPERATION OF THE HAND PUMP.
 - 3 - IN THE RIGHT MAIN LANDING GEAR WHEEL WELL:
 - MOVE THE LEVERS OF THE TWO SELECTOR VALVES TO "MANUAL OPERATION".
 - REMOVE THE HAND PUMP LEVER FROM ITS STORAGE AND INSTALL IT ON THE HAND PUMP.
 - OPERATE THE HAND PUMP UNTIL THE CARGO DOOR IS FULLY OPEN (YOU CAN FEEL THE FORCE INCREASE ON THE HAND PUMP LEVER).
 - 4 - THE GREEN INDICATOR LIGHT ABOVE THE SELECTOR COMES ON.
 - 5 - RELEASE THE SELECTOR. THE SELECTOR GOES BACK TO THE "STOP" POSITION.
 - 6 - REMOVE THE HAND PUMP LEVER.

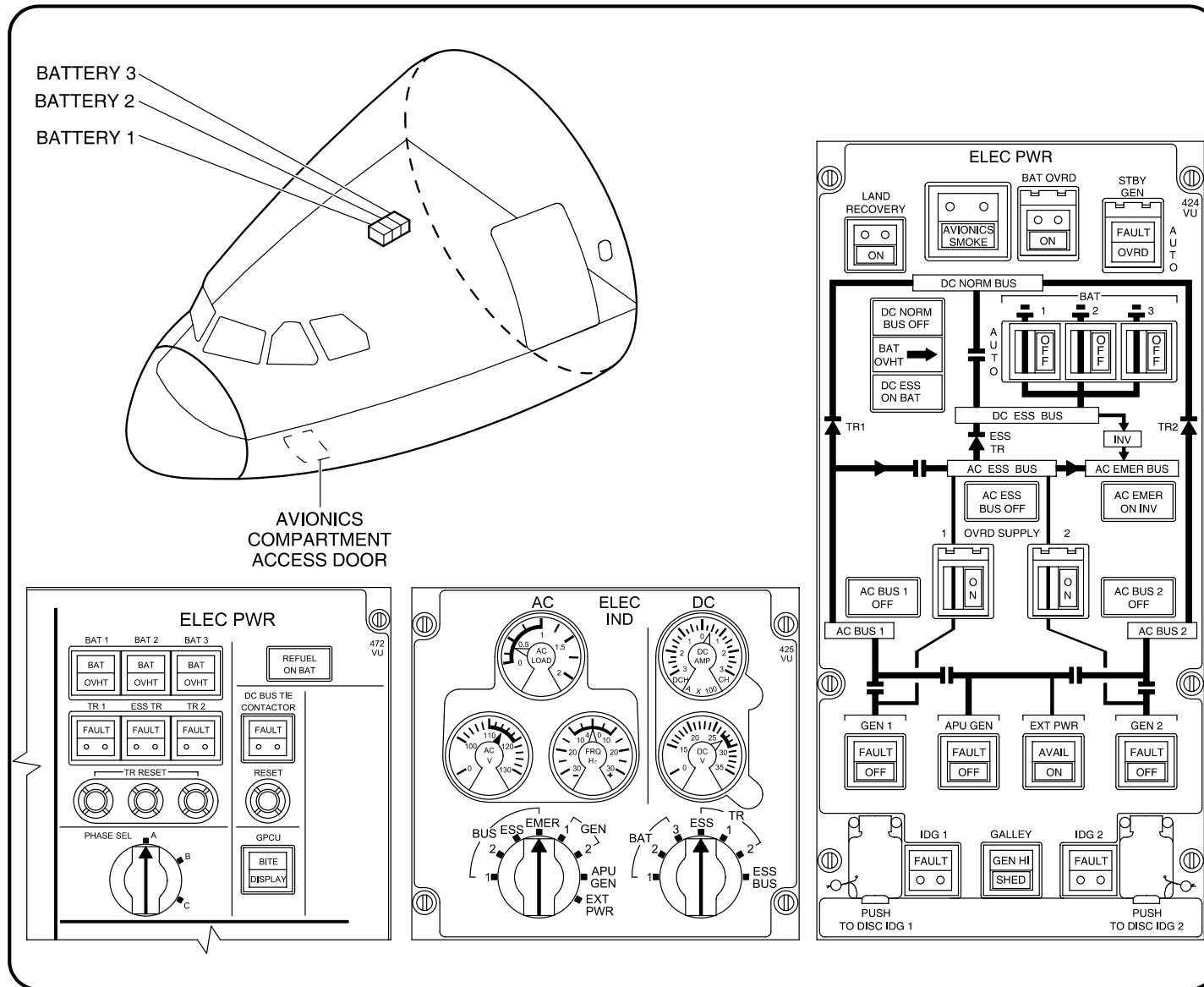
A300-600 All Models
AIRCRAFT RESCUE AND
FIRE FIGHTING CHART



Structural Break-in Points - Principle

A300-600 All Models

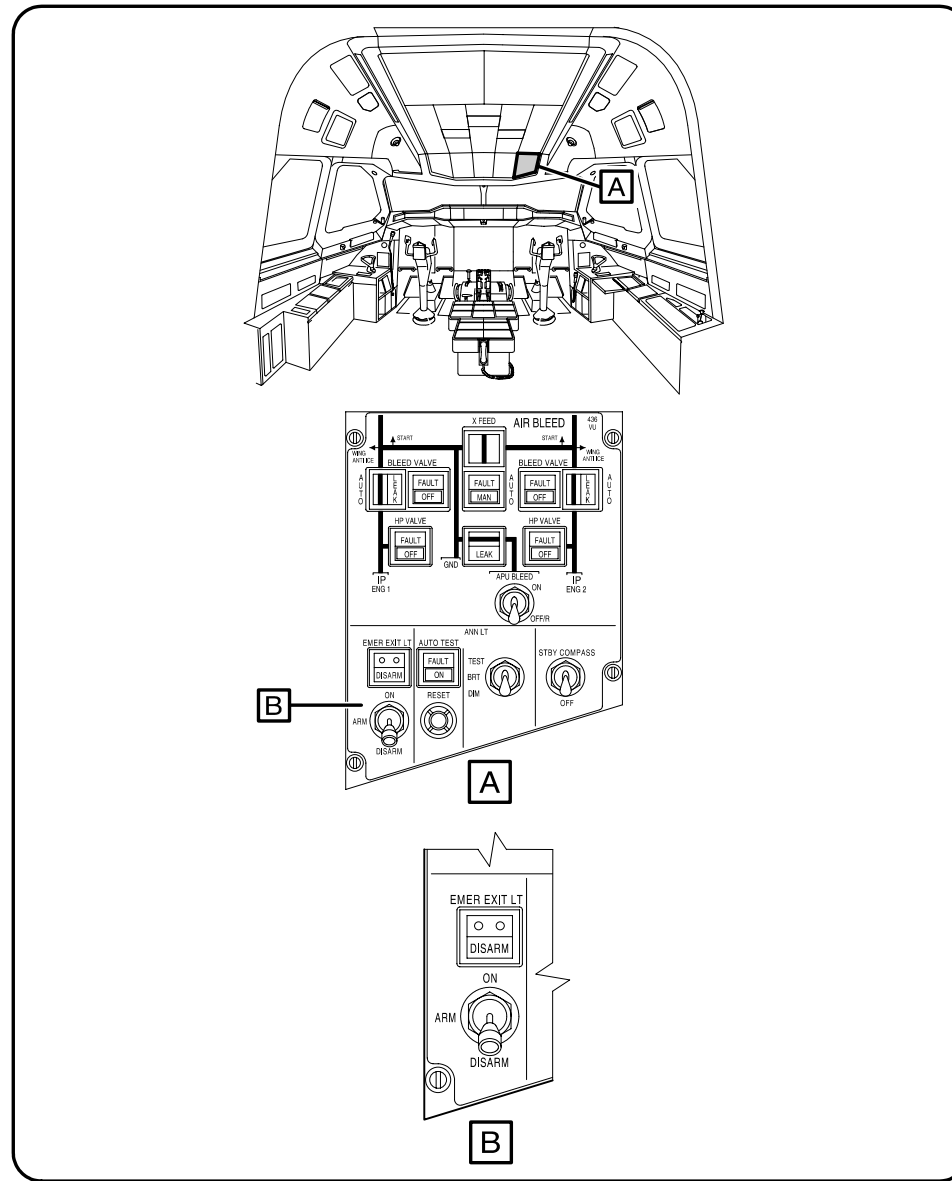
AIRCRAFT RESCUE AND FIRE FIGHTING CHART



Batteries and Control Panel - Location

A300-600 All Models

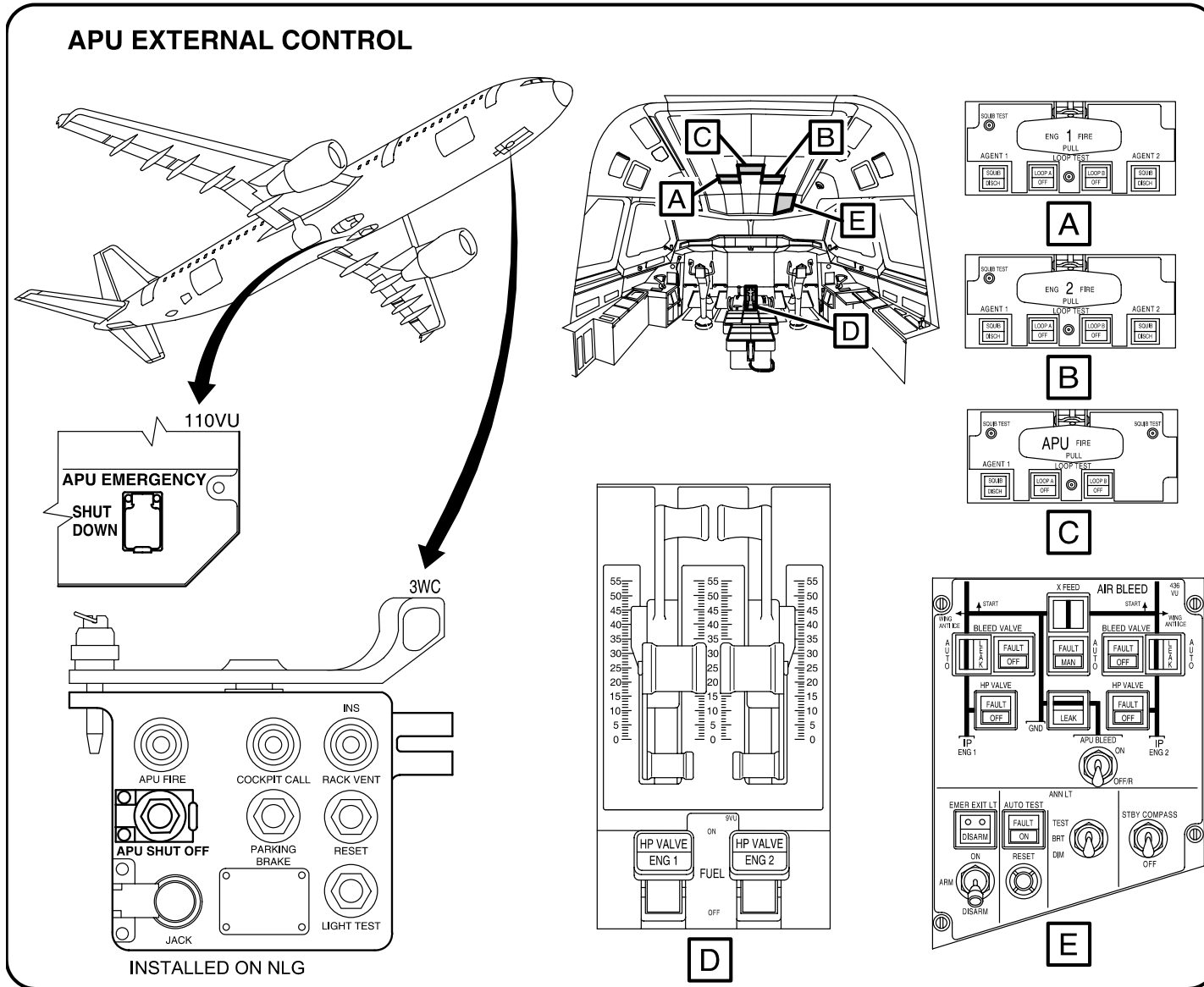
AIRCRAFT RESCUE AND FIRE FIGHTING CHART



Emergency Exit Light Control Panel - Location

A300-600 All Models

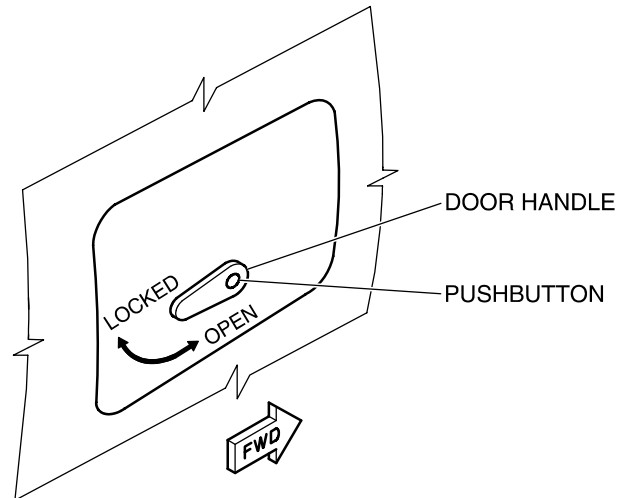
AIRCRAFT RESCUE AND FIRE FIGHTING CHART



Engine and APU Controls and FIRE Panels - Location

A300-600 All Models
AIRCRAFT RESCUE AND
FIRE FIGHTING CHART

BULK CARGO COMPARTMENT DOOR CONTROL

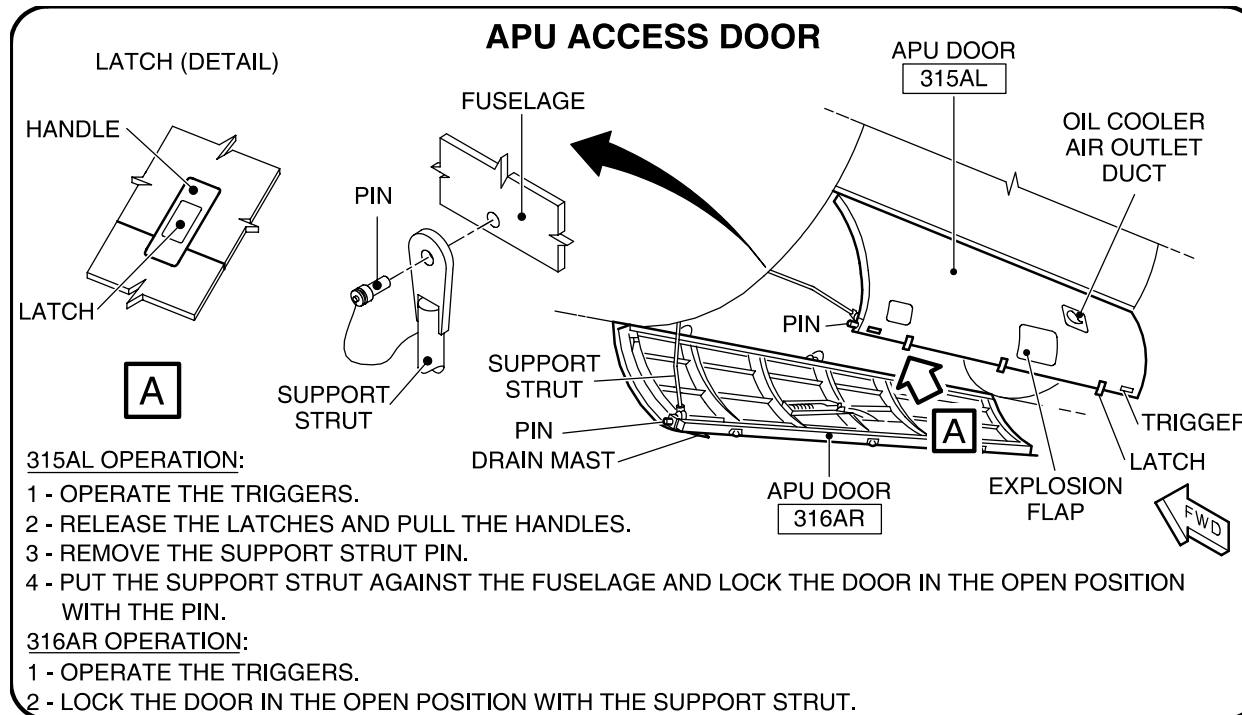


OPERATION :

- 1 - PUSH THE PUSHBUTTON TO RELEASE THE DOOR HANDLE.
- 2 - MOVE THE HANDLE DOWN TO THE "OPEN" POSITION.
- 3 - PUSH THE BULK CARGO DOOR IN. PUT THE DOOR HANDLE BACK IN THE "LOCKED" POSITION AND INTO THE RECESS.
- 4 - PUSH THE BULK DOOR UP UNTIL THE HOOK ENGAGES.

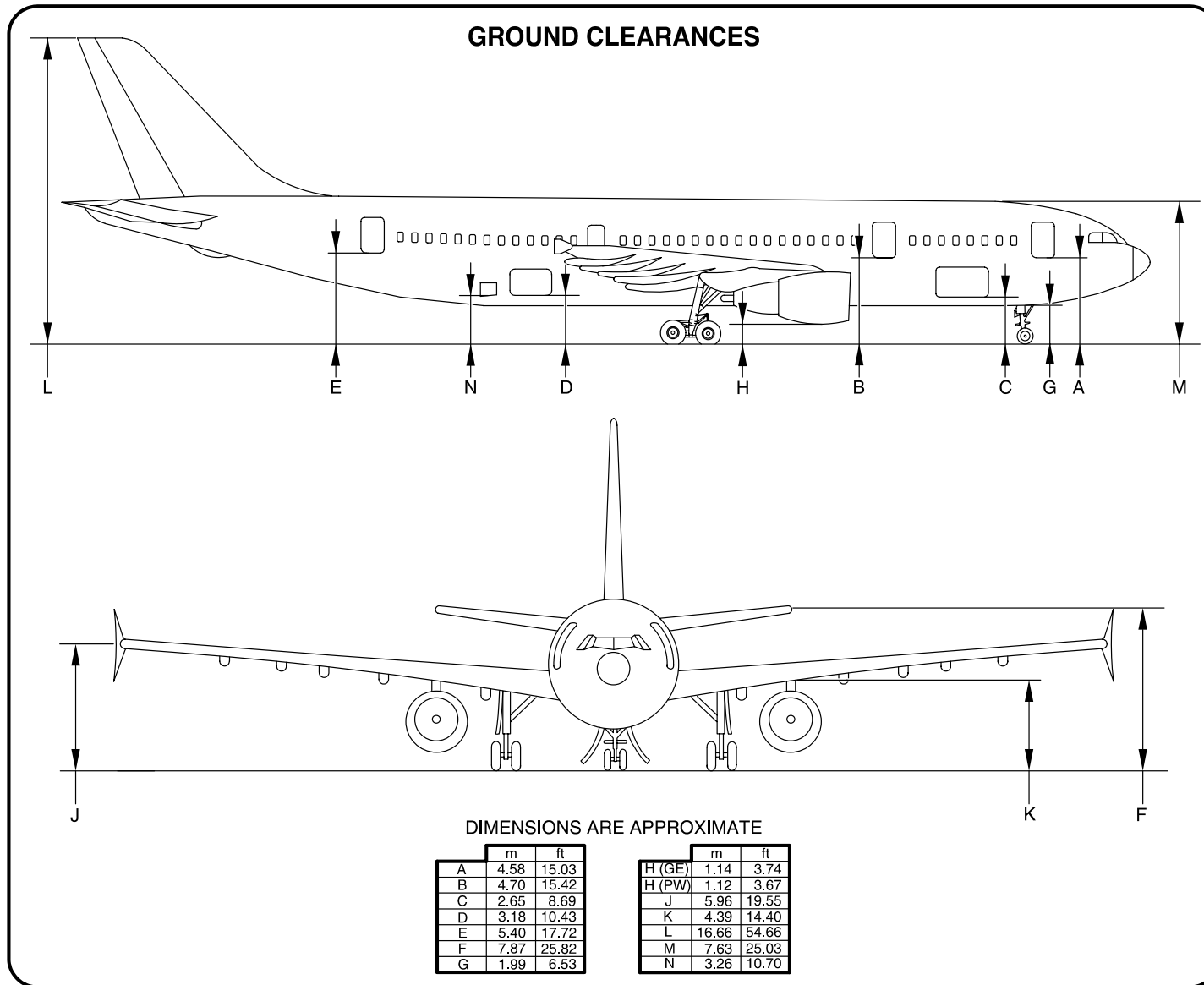
Bulk Cargo Compartment Door Control

A300-600 All Models
AIRCRAFT RESCUE AND
FIRE FIGHTING CHART



APU Compartment Access

A300-600 All Models
AIRCRAFT RESCUE AND
FIRE FIGHTING CHART



Aircraft Ground Clearances