

HELICOPTERS
Training Services

Welcome

On-site Safety & Information
Maignane



AIRBUS

Read this leaflet in other languages



Contents

04 > Welcome reception

05 > Access to the site

06 > General rules

07 > Prohibited on site

08 > Safe together!

09 > Personal Protective Equipment

10 > Map of site

12 > Emergency procedure

13 > Hazard pictograms

14 > Workshop safety

16 > Airfield safety

18 > Notes

Welcome reception

Opening hours

Monday to Thursday 7:30 AM—5:00 PM

Friday 7:30 AM—4:30 PM



+33 (0) 4 42 85 68 75

An emergency during your stay?

Contact your Customer Assistance Manager outside the reception opening hours



+33 (0) 7 78 65 86 67

Restaurant

Special meals (vegetarian, Halal, allergies etc) are available in our restaurant, please request at the Welcome reception.

Who to contact?

- For all matters related to your training course: your focal point is your instructor
- For all matters related to your stay: your focal point is the Welcome reception

Access to the site

By car

A car park is available for our customers, please ask for a car pass.



On site, the speed limit is 20km/h.

By shuttle bus

A daily shuttle service is included in the accommodation package. Please make sure you take the shuttle bus *Airbus Training* and not *Airbus Helicopters* which goes to the factory.

Shuttle bus timetable

7:10 AM Stade Ouest

7:10 AM Le Galice

7:15 AM La Rotonde/Avenue Victor Hugo

7:20 AM Saint Pierre

7:25 AM Complexe Sportif du Val de l'Arc

7:25 AM Beausoleil



Always use the pedestrian crossings!

General rules

Behaviour



During your stay in France, you must respect the French law and adopt the appropriate behaviour.

All penal offences will engage your liability and your hierarchy and embassy will be informed.

Security pass



A security pass will be issued on the first day of class which gives you access to the training centre only. You must wear this badge all day during your training course. If you have to enter other facilities within the Airbus Helicopters site, you must be accompanied by an Airbus Helicopter staff member.

Electronic equipment



The access to the site with electronic devices (camera, laptop, computer, tablets) is restricted.



You must declare all equipment on your arrival at the Welcome reception.



A free wifi access is available on request in the Welcome lounge.

Prohibited on site



No smoking
(except in the smoking zones,
always use the ashtrays)



No vaping
(except in the smoking zones)



No entry without badge



No alcohol, no drugs



No cellphones
(near the airfield)



No inappropriate clothing
& footwear during maintenance
(skirts, shorts, flipflops)



No weapons



No photography

Safe together!

All our visitors must follow the 6 Primary Safety Rules at the Airbus Helicopters facilities.



Always wear appropriate PPE

Respect signs, and/or safety operating procedures, wear appropriate Personal Protective Equipment.



Walk safely

Respect the no-access zones, use pedestrian areas.



Keep all safety equipment accessible and operational

Avoid blocking access to or hindering the correct operation of any safety equipment.



Drive safely

Respect traffic regulations, fasten your seatbelt, do not use phone, respect speed limits, park safely.



Respect no-smoking zones and rules for electronic devices

Smoke or vape only in smoking areas, do not use electronic devices within the prohibited areas.



Be aware of unsafe situations

Be careful, protect yourself and others by detecting and reporting unsafe situations immediately.

Personal Protective Equipment



Eye protection



Safety hat



Ear protection



Protective gloves



Foot protection



Respiratory protection



Protective clothing

Map of site

T6

Welcome reception

T4

Restaurant *le Régalon*

T10

Classroom 1–12
Maintenance hangar

T5

Classroom 15–17
Cinema room

V5

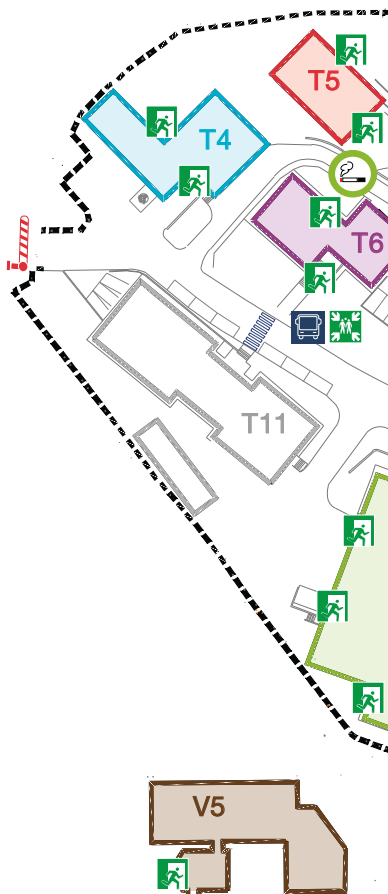
Classroom 18–21

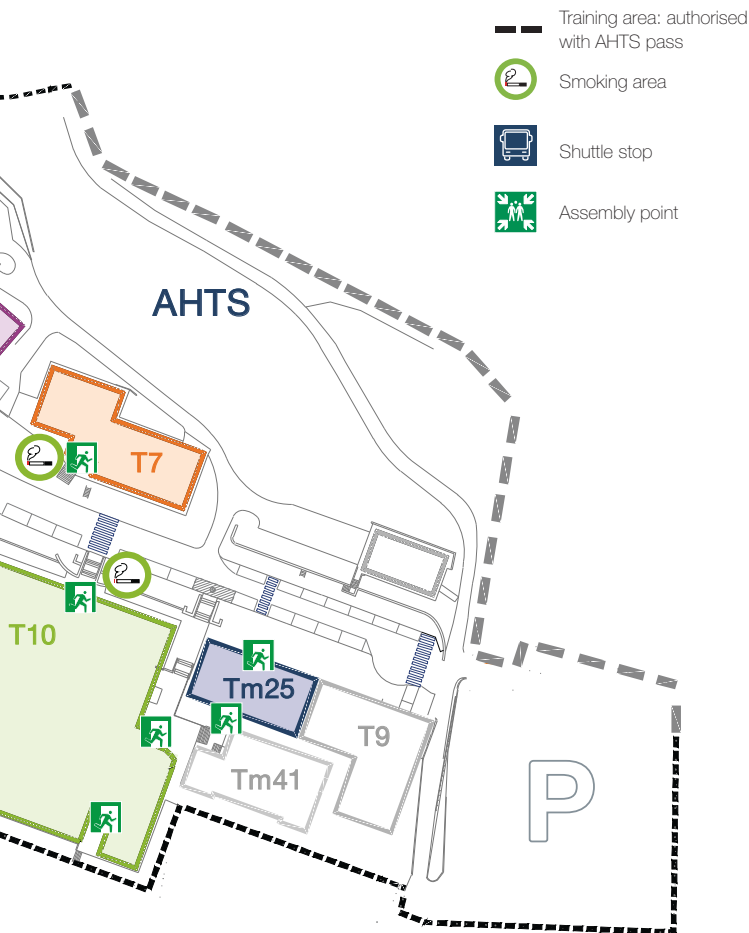
T7

Classroom 22–27

Tm25

Classroom 29–30





Emergency procedure

DISPLAYED IN EVERY BUILDING AT EACH ENTRANCE
AND EXIT NEAR THE RED EMERGENCY POINT

IN CASE OF EMERGENCY ALERT YOUR INSTRUCTOR AND DIAL:

18 from an office phone

+33 (0) 4 42 85 85 18 from a mobile phone

or use a **red phone** 



FIRE

If you witness a fire:

1. Alert the emergency services immediately.

2. Indicate the place where the fire is and its origin if known (paper, electricity, dangerous products...).

3. Carry out the first intervention using the nearest fire extinguisher (always read the pictograms).

4. Evacuate the premises if the fire intensifies despite your intervention.



EVACUATION

A continuous alarm signal orders the evacuation from the premises.

If you hear this alarm:

1. Calmly evacuate the premises following the evacuation plan.

2. If possible, close the doors and windows as you leave.

3. Choose the most accessible exit.

4. Proceed to the assembly point outside the building and wait for safety instructions.



ACCIDENT

If you witness an accident or health issue:

1. Ensure your own safety and the safety of others.

2. Alert the emergency services immediately.

3. Report the issue and indicate the place and number of victims.

4. Alert the first aid worker (list on the notice board in the entrance of the V5, T9, T11 buildings).

5. Protect and comfort the victim.

6. Guide the emergency services to the entry of the building.



assembly point

Hazard pictograms



Oxidiser



Flammable



Explosive



Acute toxicity



Corrosives



Gases under pressure



Carcinogen
Aspiration toxicity



Environmental hazard



Harmful
Irritant

Workshop Safety

ALL TOOLS AND ELEMENTS USED DURING THE COURSE ARE ONLY FOR TRAINING PURPOSES AND ARE OWNED BY AHTS.

General rules

- > You must follow the marked walkways.
- > Do not block access to the emergency exits and extinguishers.
- > If you enter the maintenance area, you must wear a safety helmet.
- > If you approach the aircraft, you must be accompanied.
- > While working on the aircraft, you must wear the safety shoes.
- > After maintenance, you must leave your workplace tidy.

Most important symbols used in the maintenance area



No entry



Disconnect before maintenance



Fire extinguisher



High noise area



Emergency exit



Emergency phone



Danger!

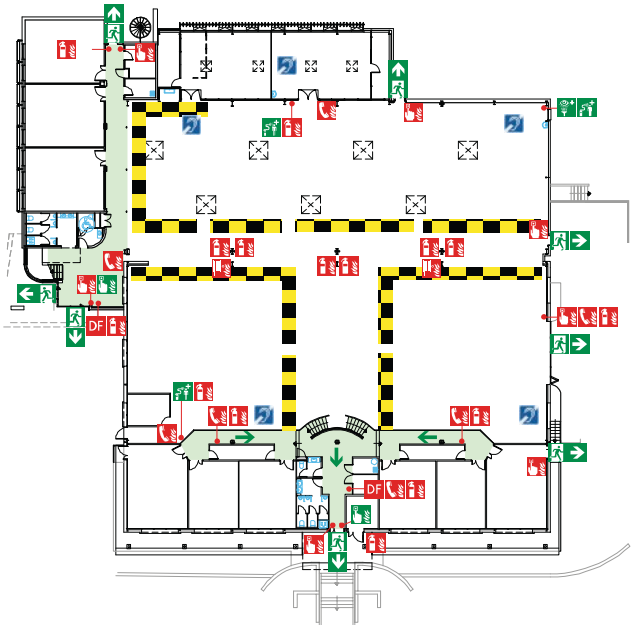


Danger: electricity!



Danger: hot surface!

Fire escape plan (Building T10 - Maintenance hangar)



Fire hose



Smoke extraction



Fire emergency phone



Fire alarm call point



Emergency eyewash



Emergency door opening



Emergency shower



Escape route

Airfield Safety

1. General rules:

- > These manoeuvres can only be authorised by the pilot.
- > You must keep your head down for all movement under the rotor.
- > All movement to the rear of the aircraft is strictly prohibited (danger from tail rotor).

2. The role of the person who accompanies you:

Boarding

- > Always approach the front of the aircraft within the view of the pilot.
- > Gesture your request to move under the rotor.
- > If authorised by the pilot, lead the passengers and stand against the cargo door in order to block access to the rear of the aircraft (see diagram opposite).

Deboarding

- > Only leave the aircraft following the command of the pilot.
- > If only one person accompanies the crew, the deboarding will be performed at only one side of the aircraft.
- > Lead the passengers and stand against the cargo door in order to block access to the rear of the aircraft (see diagram opposite).
- > Indicate the direction that the passengers must take (towards the front of the aircraft).

You can help us improve our level of safety!

- talk to your instructor
- report your observations by email to:



contact.aviationsafety.ah@airbus.com

Contacts

Welcome reception
+33 (0) 4 42 85 68 75

Customer Assistance Manager
+33 (0) 7 78 65 86 67

In case of Emergency on site
+33 (0) 4 42 85 85 18
or use the red phone

AIRBUS

AIRBUS HELICOPTERS TRAINING SERVICES

Aéroport International Marseille Provence - 13725

Marignane Cedex - France

©Airbus Helicopters Training Services - 2018 - All rights reserved. Airbus, its logo and product names are registered trademarks.

Concept design by Airbus Helicopters Training Services, Dorottya Marki.

Photos by Airbus Helicopters, Charles ABARR
Printed in France.

Confidential and proprietary document. This document and all information contained herein is the sole property of AIRBUS HELICOPTERS TRAINING SERVICES. No intellectual rights are granted by the delivery of this document or the disclosure of its content. This document shall not be reproduced or disclosed to a third party without the express written consent of AIRBUS HELICOPTERS TRAINING SERVICES.

This document and its content shall not be used for any purpose other than that for which it is supplied. The statements made herein do not constitute any offer. They are based on the mentioned assumptions and are expressed in good faith. AIRBUS HELICOPTERS TRAINING SERVICES reserves the right to make configuration and data changes at any time without notice.

www.airbushelicopterstrainingservices.com