

## Dundas

Explore two canals. Short and ideal for all wheels plus bike and boat hire.

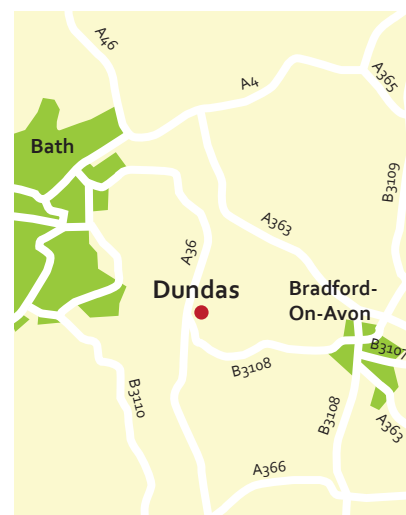


### Where is it?

From Bath take the A36 towards Warminster. After three miles (4.8km) and an entry sign for Limpley Stoke there are double traffic lights. At the lights turn left down the B3108 (signed Bradford-on-Avon) and quickly turn left into the Dundas Marina car park. Pay and Display.

### The walk

This is a rural waterfront path of 400 metres along the Avon Valley to a magnificent aqueduct that carries the Kennet and Avon Canal high over the river Avon and the railway. You can return the way you came (total 800 metres) or take in an interesting extension alongside the largely disused Somersetshire Coal Canal, making a total 1.2 kms. The walk to the aqueduct is on gently climbing tarmac, and the canal towpaths are on level smooth grit. The route can be further extended as far as you wish in either direction along the Kennet and Avon towpath. The walk is open to all.



**Distance:** 0.8km/1/2 mile or 1.2km/3/4 mile with ups and downs of 12m or 39ft

**Start:** Dundas Marina car park by masts. Approach from Whittington. ST 782/620 (BA2 7JD)

**Refreshments:** Dundas Basin Visitor Centre

### Directions

From the end of the car park take the level path between offset wooden gates which climbs gently alongside the valley. After 250 metres and a short ascent, take note of the gate on your left **1** with signs to the Angelfish Café and visitor centre. Continue for 150 metres and after another short climb you arrive at an information board on the Kennet and Avon Canal.

The aqueduct is on your right and the basin and wharf are on your left. Turn back here. **2** On your return it is well worth turning right at the gate **1** to walk alongside the Coal Canal, now

used as moorings, to the visitor centre, café and boat/cycle hire (open all year). From here a steep zigzag path leads down to the car park, but it is not recommended for wheelchair users. It is best to walk back to the gate **1** and turn right along the original tarmac path.

### Along the way

If you wish to go further, the Kennet and Avon canal towpath at point **2** leads over the aqueduct and turns south to Avoncliff and Bradford-on-Avon. The towpath to the left towards Bath crosses a lifting bridge over a blocked entrance to the Coal Canal, continue behind the wharf house, cross another bridge and in 1.25 miles (2km) reach the Claverton Pumping Station. On either route you return the way you came.

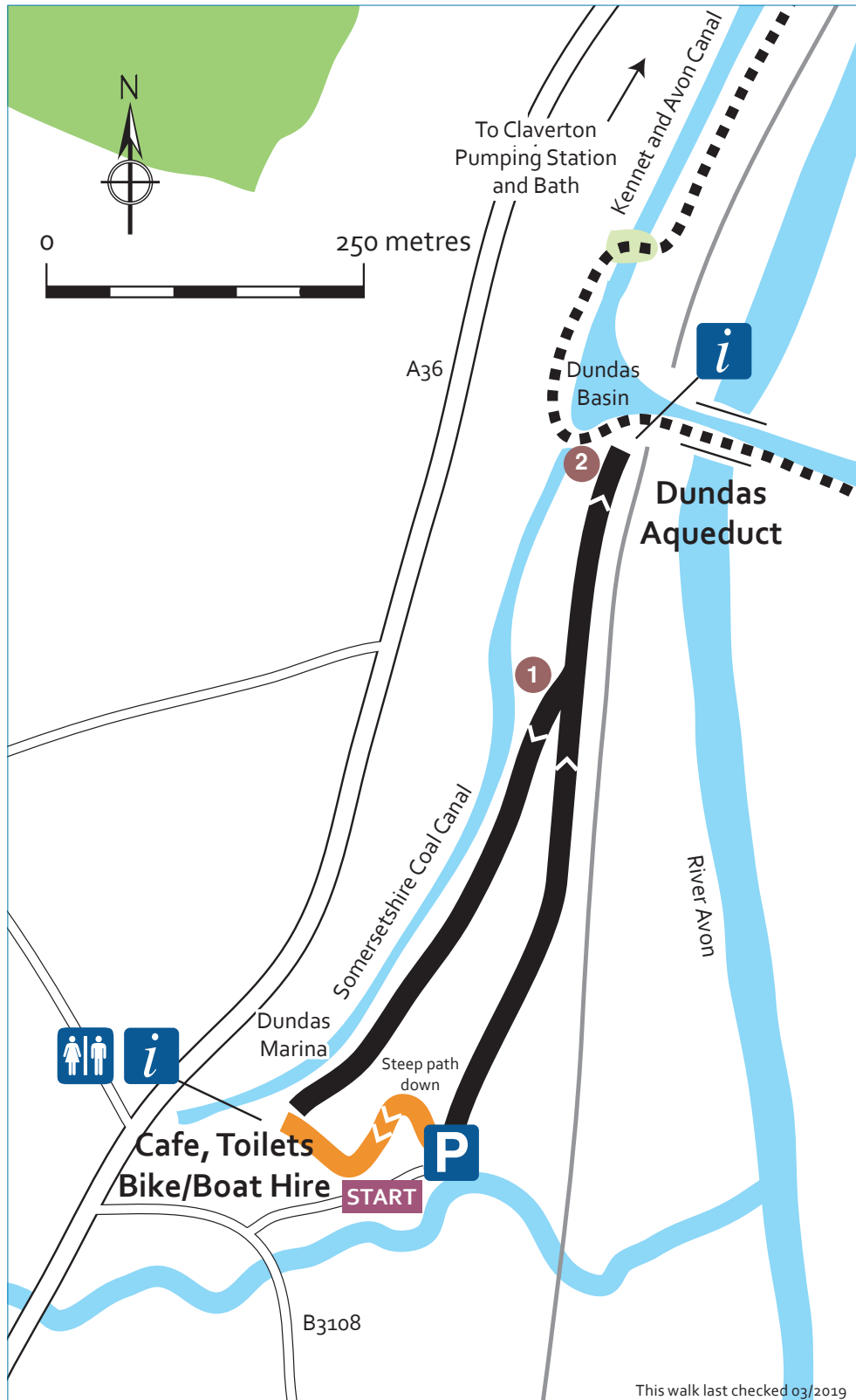
### Refreshments and toilets

Dundas Basin Visitor Centre, café and toilets (wheelchair accessible).

# Walks on Wheels - for wheelchair, mobility scooter and children's buggy

## Dundas

Explore two canals. Short and ideal for all wheels plus bike and boat hire.



### Key to map

- Smooth, hard surface
- Rough, stone, rock, gravel, unmown grass
- Gentle slope (up)
- Steep slope (up)
- Railway
- Canal towpath

### Key to symbols

- Toilets
- Information
- Parking

### Please note:

Some of the routes may be difficult or impassable in bad weather and after rain. Always wear appropriate clothing and footwear and beware of traffic. The Cotswold Conservation Board cannot accept responsibility for accidents or difficulties experienced by users of these routes.