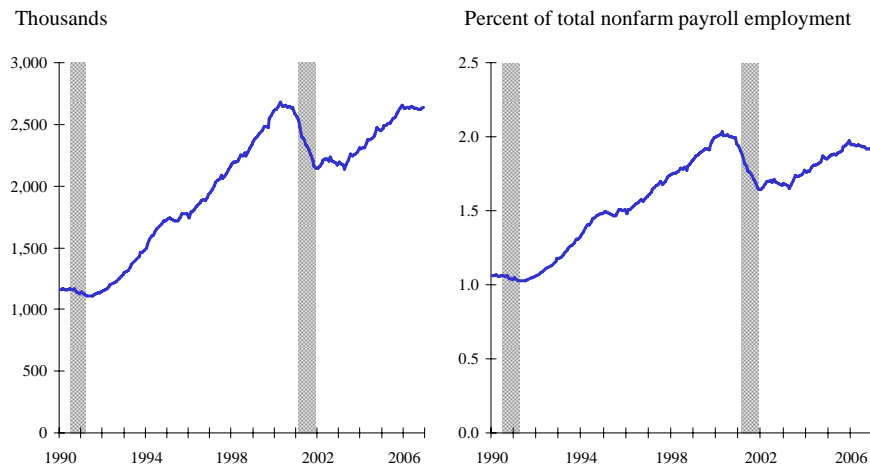


Chart 3-3. About 2 percent of nonfarm jobs are in temporary help services



NOTE: Shaded areas represent recessions. Data are seasonally adjusted.

SOURCE: Bureau of Labor Statistics

Chart 3-3. About 2 percent of nonfarm jobs are in temporary help services

- Employment in temporary help services—an industry that provides workers to many other industries—grew rapidly during the 1990s and into 2000.
- After falling sharply during the 2001 recession, employment in the industry began trending back up in 2003. By the end of 2005, the industry accounted for nearly 2 percent of total nonfarm payroll employment, about the same share as at its previous peak in 2000.
- In 2006, temporary help services employment was little changed on net.