

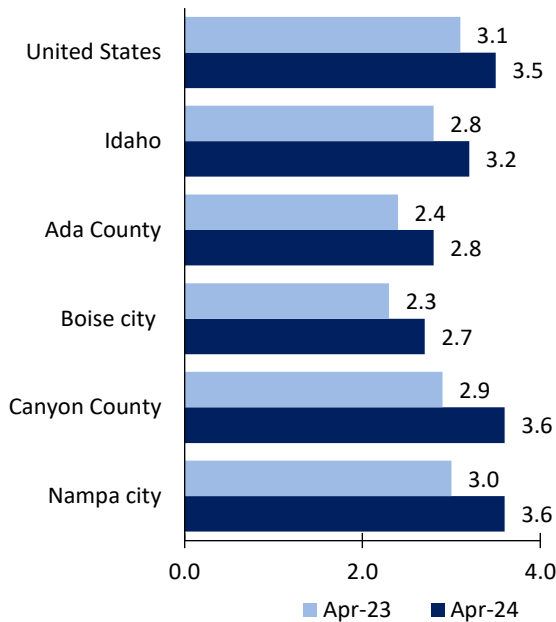
# Boise City Area Economic Summary

Updated June 06, 2024

This summary presents a sampling of economic information for the area; supplemental data are provided for regions and the nation. Subjects include **unemployment, employment, wages, prices, spending, and benefits**. All data are not seasonally adjusted and some may be subject to revision. Area definitions may differ by subject. For more area summaries and geographic definitions, see [www.bls.gov/regions/economic-summaries.htm](http://www.bls.gov/regions/economic-summaries.htm).

## Unemployment rates for the nation and selected areas

Unemployment rates

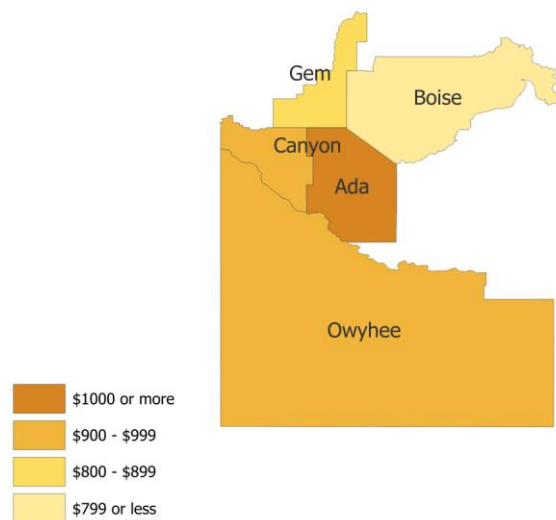


Source: U.S. BLS, Local Area Unemployment Statistics.

## Average weekly wages for all industries by county

### Boise City metro area, fourth quarter 2023

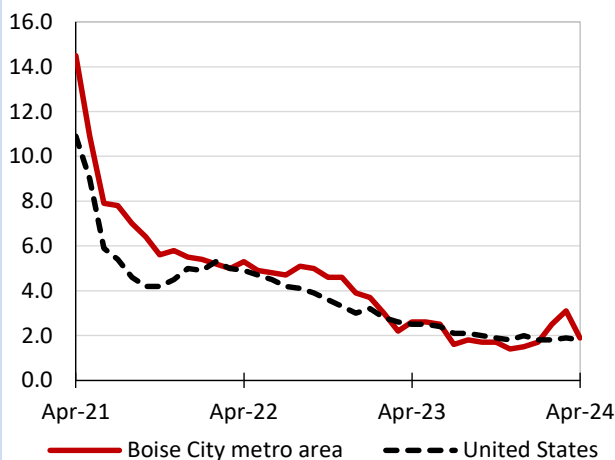
(U.S. = \$1,435; Area = \$1,247)



Source: U.S. BLS, Quarterly Census of Employment and Wages.

## Over-the-year changes in employment on nonfarm payrolls and employment by major industry sector

12-month percent changes in employment



Source: U.S. BLS, Current Employment Statistics.

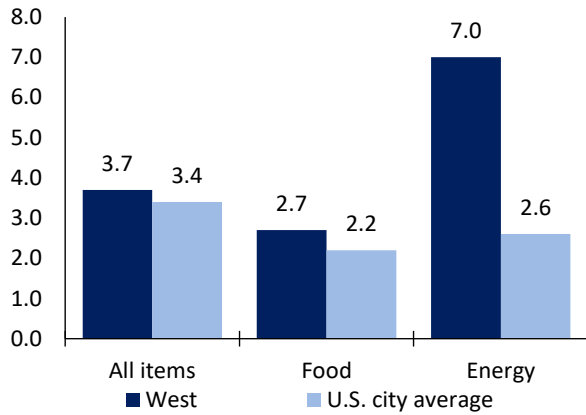
Boise City metro area employment (number in thousands)	Apr. 2024	Change from Apr. 2023 to Apr. 2024	
		Number	Percent
Total nonfarm	399.1	7.3	1.9
Mining, logging, and construction	35.7	2.3	6.9
Manufacturing	31.8	1.0	3.2
Trade, transportation, and utilities	76.4	1.1	1.5
Information	4.8	0.0	0.0
Financial activities	22.0	-1.0	-4.3
Professional and business services	59.3	-1.1	-1.8
Education and health services	62.2	2.6	4.4
Leisure and hospitality	39.6	-0.6	-1.5
Other services	12.6	-0.6	-4.5
Government	54.7	3.6	7.0

Source: U.S. BLS, Current Employment Statistics.



Over-the-year change in the prices paid by urban consumers for selected categories

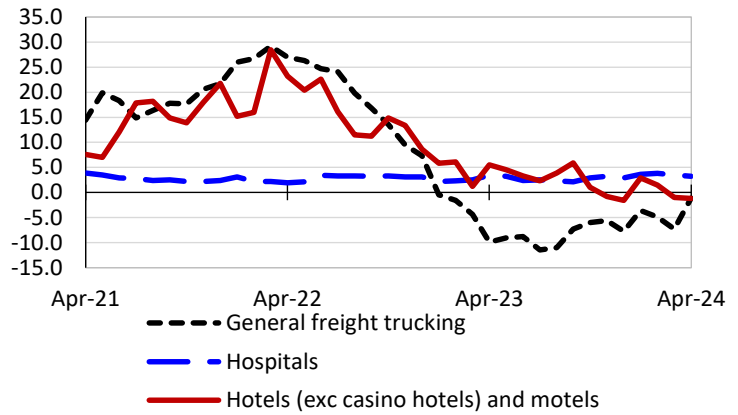
12-month percent change in CPI-U, April 2024



Source: U.S. BLS, Consumer Price Index.

Over-the-year changes in the selling prices received by producers for selected industries nationwide

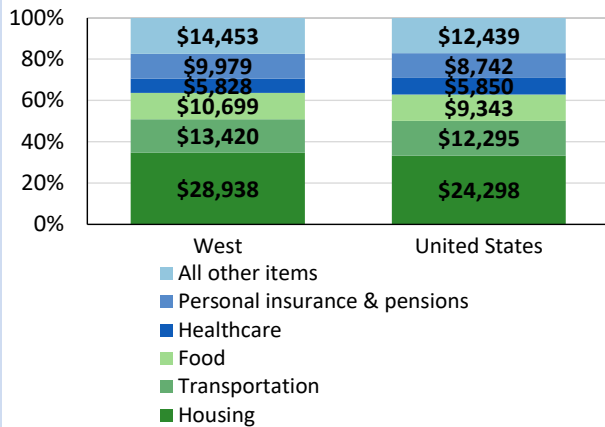
12-month percent changes in PPI



Source: U.S. BLS, Producer Price Index.

Average annual spending and percent distribution for selected categories

Average annual expenditures, United States and West, 2022



Source: U.S. BLS, Consumer Expenditure Survey.

Average hourly wages for selected occupations

Occupation	Boise City metro area	United States
All occupations	\$28.07	\$31.48
Financial managers	63.43	84.05
Human resources managers	59.91	74.39
Registered nurses	41.82	45.42
Accountants and auditors	33.98	43.65
Construction laborers	21.66	23.69
Cooks, restaurant	15.89	17.34

Source: U.S. BLS, Occupational Employment and Wage Statistics, May 2023.

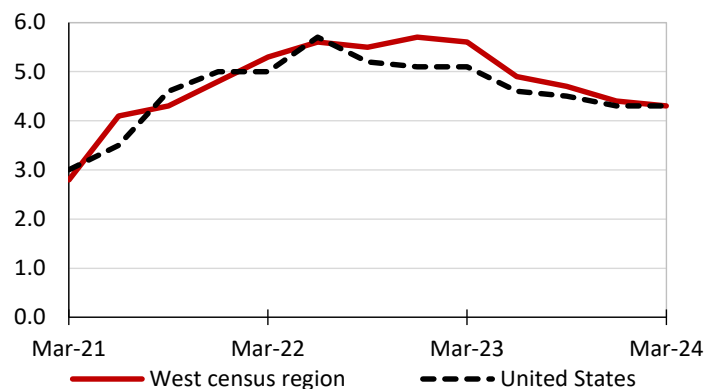
Employer costs per hour worked for wages and selected employee benefits by geographic division

Private industry, December 2023	West census region	United States
Total compensation	\$45.15	\$43.11
Wages and salaries	31.95	30.33
Total benefits	13.20	12.77
Paid leave	3.39	3.26
Vacation	1.69	1.67
Supplemental pay	1.68	1.71
Insurance	3.09	3.14
Retirement and savings	1.55	1.50
Legally required benefits	3.49	3.17

Source: U.S. BLS, Employer Costs for Employee Compensation.

Over-the-year changes in wages and salaries

12-month percent changes in ECI



Source: U.S. BLS, Employment Cost Index.

