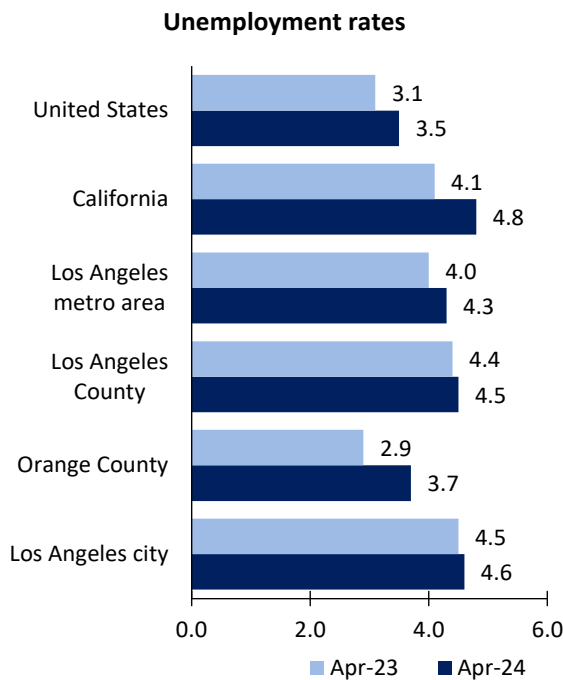


Los Angeles Area Economic Summary

Updated June 10, 2024

This summary presents a sampling of economic information for the area; supplemental data are provided for regions and the nation. Subjects include **unemployment, employment, wages, prices, spending, and benefits**. All data are not seasonally adjusted and some may be subject to revision. Area definitions may differ by subject. For more area summaries and geographic definitions, see www.bls.gov/regions/economic-summaries.htm.

Unemployment rates for the nation and selected areas



Source: U.S. BLS, Local Area Unemployment Statistics.

Average weekly wages for all industries by county

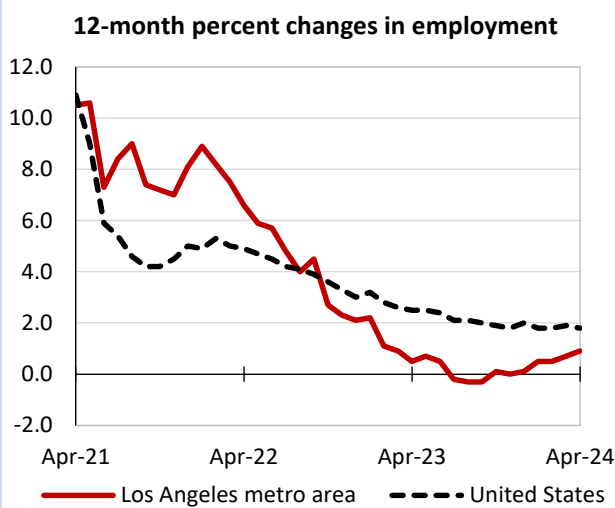
Los Angeles-Long Beach-Anaheim, CA MSA, fourth quarter 2023

(U.S. = \$1,435; Area = \$1,643)



Source: U.S. BLS, Quarterly Census of Employment and Wages.

Over-the-year changes in employment on nonfarm payrolls and employment by major industry sector



Source: U.S. BLS, Current Employment Statistics.

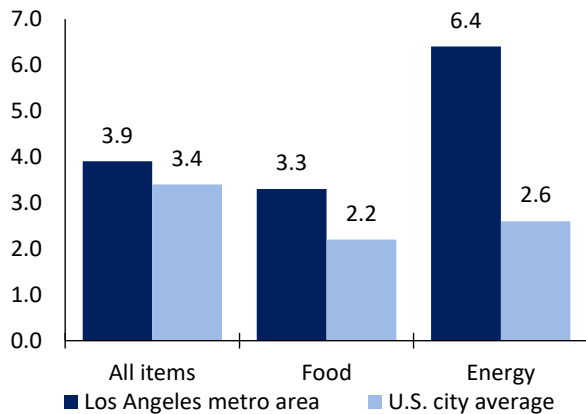
Los Angeles metro area employment (number in thousands)	Apr. 2024	Change from Apr. 2023 to Apr. 2024	
		Number	Percent
Total nonfarm	6,273.1	53.6	0.9
Mining and logging	1.9	-0.1	-5.0
Construction	252.4	-1.6	-0.6
Manufacturing	468.8	-6.4	-1.3
Trade, transportation, and utilities	1,077.2	0.3	0.0
Information	206.9	-15.9	-7.1
Financial activities	311.7	-3.6	-1.1
Professional and business services	960.5	-18.8	-1.9
Education and health services	1,237.2	62.9	5.4
Leisure and hospitality	773.3	13.9	1.8
Other services	217.8	6.4	3.0
Government	765.4	16.5	2.2

Source: U.S. BLS, Current Employment Statistics.



Over-the-year change in the prices paid by urban consumers for selected categories

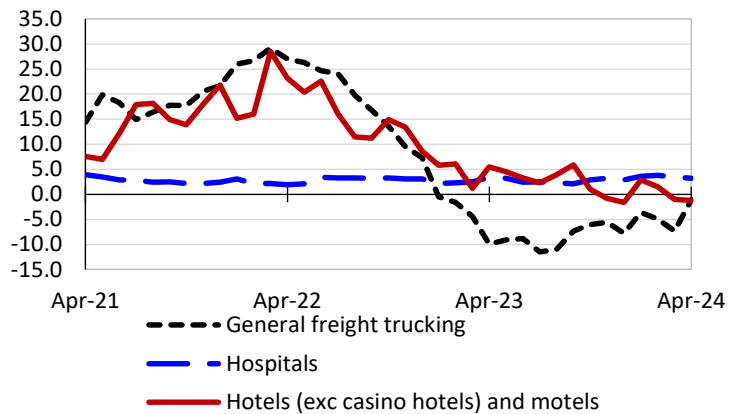
12-month percent change in CPI-U, April 2024



Source: U.S. BLS, Consumer Price Index.

Over-the-year changes in the selling prices received by producers for selected industries nationwide

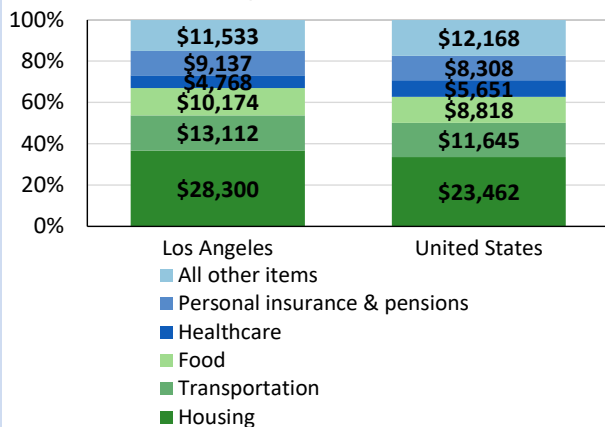
12-month percent changes in PPI



Source: U.S. BLS, Producer Price Index.

Average annual spending and percent distribution for selected categories

Average annual expenditures, United States and Los Angeles, 2021-22



Source: U.S. BLS, Consumer Expenditure Survey.

Average hourly wages for selected occupations

Occupation	Los Angeles metro area	United States
All occupations	\$35.29	\$31.48
Human resources managers	82.45	74.39
Registered nurses	58.39	45.42
Accountants and auditors	46.45	43.65
Electricians	39.95	32.60
Chefs and head cooks	31.28	30.12
Construction laborers	29.14	23.69

Source: U.S. BLS, Occupational Employment and Wage Statistics, May 2023.

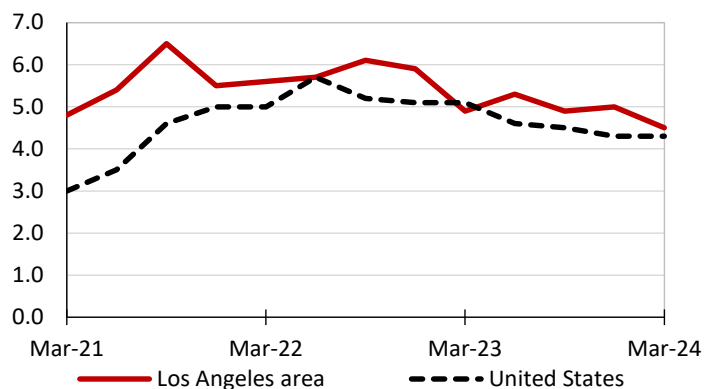
Employer costs per hour worked for wages and selected employee benefits by geographic division

Private industry, December 2023	West census region	United States
Total compensation	\$45.15	\$43.11
Wages and salaries	31.95	30.33
Total benefits	13.20	12.77
Paid leave	3.39	3.26
Vacation	1.69	1.67
Supplemental pay	1.68	1.71
Insurance	3.09	3.14
Retirement and savings	1.55	1.50
Legally required benefits	3.49	3.17

Source: U.S. BLS, Employer Costs for Employee Compensation.

Over-the-year changes in wages and salaries

12-month percent changes in ECI



Source: U.S. BLS, Employment Cost Index.

