

## Ethanolamine enhances intestinal functions by altering gut microbiome and mucosal anti-stress capacity in weaned rats

Jian Zhou<sup>1,2</sup>, Xia Xiong<sup>2\*</sup>, Ke-Xing Wang<sup>1</sup>, Li-Jun Zou<sup>1</sup>, Peng Ji<sup>3</sup> and Yu-Long Yin<sup>1,2\*</sup>

<sup>1</sup>Hunan International Joint Laboratory of Animal Intestinal Ecology and Health, Laboratory of Animal Nutrition and Human Health, College of Life Sciences, Hunan Normal University, Changsha, Hunan, 410081, People's Republic of China

<sup>2</sup>Key Laboratory of Agro-ecological Processes in Subtropical Region, Laboratory of Animal Nutritional Physiology and Metabolic Process, Hunan Provincial Engineering Research Center of Healthy Livestock, Scientific Observing and Experimental Station of Animal Nutrition and Feed Science in South-Central, Ministry of Agriculture, Institute of Subtropical Agriculture, Chinese Academy of Sciences, Changsha, Hunan 410125, People's Republic of China

<sup>3</sup>Department of Nutrition, University of California, Davis, CA 95616, USA

(Submitted 14 December 2017 – Final revision received 21 March 2018 – Accepted 2 April 2018 – First published online 23 May 2018)

### Abstract

Ethanolamine (Etn) contained in milk is the base constituent of phosphatidylethanolamine and is required for the proliferation of intestinal epithelial cells and bacteria, which is important for maintenance of the gut microbiome and intestinal development. The present study investigated the effect of Etn on intestinal function and microbiome using 21-d-old Sprague–Dawley rats treated with 0, 250, 500 and 1000  $\mu\text{M}$  Etn in drinking water for 2 weeks immediately after weaning. Growth performance, intestinal morphology, antioxidant capacity and mucosal immunity, as well as gut microbiota community composition, were evaluated. Metagenomic prediction and metabolic phenotype analysis based on 16S RNA sequencing were also carried out to assess changes in metabolic functions. We found that weaned rats administered 500  $\mu\text{M}$  Etn enhanced mucosal antioxidant capacity, as evidenced by higher superoxide dismutase and glutathione peroxidase levels in the jejunum ( $P < 0.05$ ) compared with those in the control group. Predominant microbes including Bacteroidetes, Proteobacteria, Elusimicrobia and Tenericutes were altered by different levels of Etn compared with the control group. An Etn concentration of 500  $\mu\text{M}$  shifted colonic microbial metabolic functions that are in favour of lipid- and sugar-related metabolism and biosynthesis. Etn also altered the metabolic phenotypes such as anaerobic microbial counts, and oxidative stress tolerance at over 250  $\mu\text{M}$ . This is the first report for a role of Etn in modifying gut microbiota and intestinal functions. Our findings highlighted the important role of Etn in shaping gut microbial community and promotes intestinal functions, which may provide a better insight of breast-feeding to infant's gut health.

**Key words:** Weaned rats: Ethanolamine: Small intestine: Gut microbiota: 16S RNA

Previous studies have shown the interactions between dietary nutrients and gut microbiota, as diets could modulate the composition and functions of commensal microbiota, whereas microbial metabolites could influence host metabolism and immunity<sup>(1,2)</sup>. Breast milk contains a variety of nutrients and bioactive factors that could affect intestinal microbiome and non-specific immunity in newborns<sup>(3,4)</sup>. Many studies have reported on the metabolic effects of milk-derived proteins, anti-bacterial peptides and immunological factors<sup>(3,5)</sup>, but few have examined lipid-related molecules such as ethanolamine (Etn) that potentially affect gastrointestinal (GI) health and microbiota composition in infants after weaning<sup>(6–8)</sup>.

Etn primarily occurs as head group of phosphatidylethanolamine (PE), the second most abundant phospholipid in mammalian cells. The free form of Etn presents at varying

concentrations in body fluids (e.g. breast milk), respectively<sup>(9–11)</sup>. Etn cannot be synthesised *de novo* in mammals. Instead, it has to be obtained from the diet or sloughed intestinal epithelial cells as free Etn or PE. Etn concentration in blood of newborns and adults is 52.3  $\mu\text{M}$  (range 26.2–91.9  $\mu\text{M}$ ) and 16  $\mu\text{M}$  (0–11.5  $\mu\text{M}$ )<sup>(9,11)</sup>. Mammalian cells maintain intracellular Etn concentrations through low- and high-affinity uptake systems and internal recycling of PE<sup>(3,6,7)</sup>. Etn can be utilised for *de novo* PE synthesis in intestinal cells through the cytidine phosphoethanolamine pathway<sup>(12)</sup>. Etn, as an important component of milk, enhances the proliferation of epithelial cells<sup>(8,13)</sup>.

Certain intestinal bacteria including several pathogenic species such as *Clostridium*, *Enterococcus*, *Escherichia* and *Salmonella* catabolise Etn as a major carbon and/or N source

**Abbreviations:** ALP, alkaline phosphatase; Etn, ethanolamine; OTU, operational taxonomic units; PE, phosphatidylethanolamine; sIg, secretory Ig; VH, villus height.

\* **Corresponding authors:** X. Xiong, email xx@isa.ac.cn; Y.-L. Yin, email yinyulong@isa.ac.cn

with the aid of Etn utilisation proteins (EutR)<sup>(7,14,15)</sup>. These species harbour Eut operons and are able to sense Etn through EutR<sup>(16–18)</sup>. Changes in Etn availability not only alter the colonisation of Etn-utilising bacteria, but also had a significant bearing on the virulence of pathogenic bacteria<sup>(17,19)</sup>. For instance, a 1- $\mu\text{M}$  concentration of Etn is required to activate virulence gene expression in enterohaemorrhagic *Escherichia coli* *in vitro*. In fact, Etn detection may act as a general mechanism by which bacteria sense the intestinal and possibly other host-associated environments<sup>(17,20)</sup>.

For mammalian neonates, weaning is a critical transition period that is characterised with increased risk of enteric infections<sup>(21)</sup>. Previous studies showed that weaning is often accompanied by the disturbance of enteric bacteria and inflammatory response<sup>(22–24)</sup>. Prolonged enteric inflammation owing to the presence of pathogens can damage intestinal epithelia, compromise nutrient absorption and subsequently lead to malnutrition and growth retardation in early childhood<sup>(25,26)</sup>. Weaning changes Etn availability to both host intestinal epithelial cells and gut microflora. The effect of dietary supplementation of Etn on host intestinal integrity and gut microbiome in post-weaning mammalian animals is largely unknown. The virulence and metabolism of pathogens such as *Escherichia* and *Salmonella* is dependent on Etn<sup>(17,20)</sup>. Our previous studies also showed that Etn could enhance the proliferation of enterocytes and improve the growth performance of weaned piglets<sup>(13,27)</sup>. On the basis of previously published research, we hypothesised that Etn could influence host metabolism by modulating the composition and functions of commensal microbiota in weaned rats. Therefore, the objective of this experiment was to investigate whether Etn shapes gut microbiota composition and intestinal functions during the period of weaning using rat as a model.

## Methods

### Animals and experimental design

Experimental procedures were reviewed and approved by the Animal Care and Use Committee of the Chinese Academy of Sciences<sup>(28)</sup>. Male Sprague–Dawley rats ( $n$  40, 21 d old) were obtained from Hunan SJA Laboratory Animal Co. and maintained in a specific pathogen-free facility at Hunan Normal University for over 2 weeks. Animals were stratified by body weight and randomly assigned to one of four groups, including the control group without Etn supplements (A), and three treatment groups that were supplemented with 250, 500 and 1000  $\mu\text{M}$  Etn (99.0%; Sigma-Aldrich; CAS: 141-43-5) in drinking water for a 14-d period (B, C and D). Animals were fed individually with free access to drinking water during the study.

### Animal management and sample collection

Feed and water intake were recorded daily. The body weight was recorded at the beginning of the experiment and on days 7 and 14. Growth performance was calculated as average daily gain (ADG), average daily water intake, average daily feed intake (ADFI) and feed:gain ratio. Animals were euthanised at the end of the experiment; the colon contents were collected and snap-frozen in liquid  $\text{N}_2$  until DNA extraction. The

mid-jejunum was collected, rinsed with ice-cold PBS and divided into two segments. One segment (approximately 1–2 cm) was fixed with 4% formaldehyde in phosphate buffer and stored at 4°C for analysis of mucosal morphology. The other was used for collecting the mucosa. The mucosa cell layers were scraped off and rapidly frozen in liquid  $\text{N}_2$ .

### Mucosal morphology

Jejunal segments of the small intestine preserved in 4% formaldehyde mixed with glutaraldehyde were embedded in paraffin and sectioned at the thickness of 5  $\mu\text{m}$ . Tissue sections were stained with haematoxylin–eosin<sup>(29)</sup>. Villus height (VH) and crypt depth (CD) were measured under a light microscope at 40 $\times$  magnification using an image processing and analysis system (Leica Imaging Systems). A minimum of ten well-oriented, intact villi were measured from the crypt mouth to the villous tip, and all measurements were made (villous height and CD) in 10- $\mu\text{m}$  increments. Intraepithelial lymphocytes (IEL) and goblet cells (GC) per 100 epithelial cells along an intact villous were counted, and the count was repeated five times for each section in each rat.

### Analysis of antioxidative index and cytokine expression in mucosa of the small intestine

Jejunal mucosa was homogenised in 0.9% ice-cold saline solution using an IKAT8 Ultra-Turrax tissue homogeniser (Merck) and then centrifuged at 3000  $\text{g}$  at 4°C for 10 min. The supernatant was collected for measurement of cytokines, secretory Ig (SIg)A and antioxidant capacity. The concentrations of cytokines (IL-1 $\beta$ , IL-2, IL-6 and IL-10) and sIgA were measured using commercial ELISA kits (Cusabio Biotech Co.) according to the manufacturer's instructions. The antioxidant capacity was determined by measuring catalase, malondialdehyde (MDA), superoxide dismutase (SOD), alkaline phosphatase (ALP), glutathione peroxidase (GSH-px) and total antioxidation capacity (T-AOC) using commercial assay kits (Nanjing Jiancheng Bioengineering Institute). Jejunal mucosal cytokines, SIgA and antioxidant indices were normalised with the protein concentration of each sample.

### Microbiota analysis using 16S RNA high-throughput sequencing

The colon contents of eight rats from each group were randomly chosen for microbiota analysis. Total bacterial DNA was extracted from approximately 0.25 g of colon contents using a QIAamp DNA Stool Mini kit (Qiagen). The diversity and composition of bacterial community was determined by high-throughput sequencing of the microbial 16S rDNA gene. The V4 hypervariable region of 16S rRNA gene was PCR-amplified using 515F (5'-GTGCCAGCMGCCGCGTAA-3') and 806R (5'-GGACTACHVGGGTWTCTAAT-3') primers, Illumina adaptors and molecular barcodes. Paired-end sequencing was performed on an Illumina HiSeq2500 platform (Novogene). Raw 16S data sequences were screened and assembled using QIIME version 1.7.0<sup>(30)</sup> and FLASH software packages. UPARSE version 7.0.1001<sup>(31)</sup> was used to analyse these sequences and define



operational taxonomic units (OTU). High-quality sequences were aligned against the SILVA reference database (<https://www.arb-silva.de/>) and clustered into OTU at a 97% similarity level using the UCLUST algorithm ([https://drive5.com/usearch/manual/uclust\\_algo.html](https://drive5.com/usearch/manual/uclust_algo.html)). Each OTU was assigned to a taxonomic level with the Ribosomal Database Project classifier program version 2.20 (<https://rdp.cme.msu.edu/>). The assembled HiSeq sequences obtained in the present study were submitted to NCBI's Sequence Read Archive (SRA, no. PRJNA414306).

**Metagenomic prediction and metabolic phenotype analysis**

Functional metagenomes of all samples were predicted using PICRUSt version 1.1.0<sup>(32)</sup>. OTU were selected against the Greengenes version 13\_5 database according to instructions provided for the Genome Prediction Tutorial for PICRUSt<sup>(24,33)</sup>. Metagenomes were predicted from the copy number-normalised 16S rRNA data in PICRUSt using the predict\_metagenomes.py script against the functional database of Kyoto Encyclopedia of Genes and Genomes (KEGG) Orthology. Functional categories at different levels were computed with the script categorize\_by\_function.py and visualised with the script plot\_summarize\_taxa\_through\_plots.py. Functional differences within groups were evaluated using linear discriminant analysis (LDA) effect size (LEfSe) and a specific analysis was performed with the Galaxy server<sup>(33)</sup>. The output files from the PICRUSt analysis were uploaded to the Statistical Analysis of Metagenomic Profiles version 2.1.3 software on Microsoft Windows for further statistical analysis and graphical depiction of all predicted functional data sets<sup>(34)</sup>. BugBase was used to predict organism-level microbiome phenotypes based on 16S RNA data sets and mapping files according to the tutorial documentation<sup>(35)</sup>.

**Statistical analysis**

Statistical analyses were performed using SPSS software (SPSS Inc.).  $\alpha$  and  $\beta$  diversity were analysed with QIIME version 1.7.0 (<http://qiime.org/1.7.0/>) and displayed with R version 2.15.3 software (<https://www.r-project.org/>). For PICRUSt results,

differences among groups were compared by one-way ANOVA and the Tukey–Kramer multiple comparisons test. Data are presented as means, and  $P < 0.05$  were considered statistically significant and  $0.05 < P < 0.1$  was considered as tending towards significance. Phenotypic differences were compared with the Mann–Whitney  $U$  test with false discovery rate correction.

**Results**

**Effect of ethanolamine on growth and intestinal morphology in weaning rats**

Rats receiving 250  $\mu\text{M}$  Etn tended to have greater ADFI ( $P = 0.052$ ) than control animals (Table 1). However, no differences were observed for ADG, F:G ratio among the four groups. Supplementation of Etn did not affect morphology of small intestine in terms of VH, CD and/or VH:crypt ratio. Weaned rats supplemented with 500 or 1000  $\mu\text{M}$  Etn had higher lymphocyte counts than those in the 250- $\mu\text{M}$  Etn group ( $P = 0.011$ ), but not different compared with those in the control group. There were no differences observed in the number of GC among groups.

**Effect of ethanolamine on antioxidant capacity and mucosal immunity in weaned rats**

Weaned rats administered 500  $\mu\text{M}$  Etn had higher levels of SOD in the jejunal mucosa compared with those in the control or 250  $\mu\text{M}$  Etn groups ( $P = 0.004$ ) (Table 2). Rats receiving 500  $\mu\text{M}$  Etn had higher levels of GSH-px ( $P = 0.007$ ) and ALP ( $P = 0.040$ ) compared with those in the control group, but there was no difference in comparison with the other two Etn-supplemented groups. The concentrations of CAT, MDA, T-AOC, cytokines and sIgA in the jejunal mucosa were not different among groups.

**Ethanolamine alters the composition of colonic microbiota of weaned rats**

Weaned rats administered 1000  $\mu\text{M}$  Etn had lower Simpson's index ( $P \leq 0.05$ ) compared with those in the control and 250- $\mu\text{M}$

**Table 1.** The effect of ethanolamine (Etn) on growth performance and the morphology of small intestine of weaned rats\* (Least square means with their standard errors;  $n$  8/group)

Items	Control		Etn				P		
	0 $\mu\text{M}$		250 $\mu\text{M}$		500 $\mu\text{M}$			1000 $\mu\text{M}$	
	Mean	SEM	Mean	SEM	Mean	SEM		Mean	SEM
ADFI (g/d)	18.86	0.69	21.33	0.77	19.09	0.64	20.78	0.44	0.052
ADWI (ml/d)	31.27	1.80	33.21	1.21	33.27	1.63	32.32	1.01	0.740
ADG (g/d)	7.40	0.40	8.10	0.51	7.13	0.44	7.69	0.33	0.475
F:G (g/g)	2.57	0.06	2.70	0.18	18.86	0.69	18.86	0.69	0.792
VH ( $\mu\text{m}$ )	310.40	14.67	306.90	13.45	334.40	14.80	326.00	13.68	0.475
CD ( $\mu\text{m}$ )	155.20	9.19	147.70	10.76	175.30	13.03	166.80	9.17	0.278
VH:CD	2.06	0.08	2.19	0.10	2.04	0.11	2.02	0.09	0.584
Goblet cells/100 enterocytes	28.45	2.11	32.00	3.17	27.45	2.14	32.70	2.18	0.344
Lymphocytes	208.20 <sup>a,b</sup>	9.35	180.10 <sup>b</sup>	11.26	215.30 <sup>a</sup>	7.05	215.80 <sup>a</sup>	4.64	0.011

ADFI, average daily feed intake; ADWI, average daily water intake; ADG, average daily gain; F:G, feed:gain ratio; VH, villus height; CD, crypt depth; VH:CD, villus height: crypt depth ratio.

<sup>a,b</sup> Mean values within a row with unlike superscript letters are significantly different ( $P < 0.05$ ).

\* Data were analysed by one-way ANOVA followed by Tukey's multiple comparisons test.

**Table 2.** Effect of ethanolamine on the small intestine's mucosal antioxidant capacity and cytokines of weaned rats\* (Least square means with their standard errors; *n* 8/group)

Items	Control		Ethanolamine							
	0 $\mu\text{M}$		250 $\mu\text{M}$		500 $\mu\text{M}$		1000 $\mu\text{M}$		<i>P</i>	
	Mean	SEM	Mean	SEM	Mean	SEM	Mean	SEM		
<b>Antioxidant capacity</b>										
CAT (U/ml)	12.52	0.97	11.83	0.97	13.12	1.21	12.93	0.85	0.075	
MDA (nmol/ml)	17.97	0.75	18.44	0.96	18.64	0.86	18.306	0.52	0.397	
SOD (U/ml)	67.16 <sup>b</sup>	3.16	66.78 <sup>b</sup>	3.96	74.58 <sup>a</sup>	4.68	69.58 <sup>a,b</sup>	4.99	0.004	
ALP (U/ml)	9.53 <sup>b</sup>	1.18	10.31 <sup>a,b</sup>	1.08	11.62 <sup>a</sup>	1.63	10.75 <sup>a,b</sup>	1.58	0.040	
GSH-px (U/ml)	157.69 <sup>b</sup>	9.77	168.91 <sup>a,b</sup>	12.02	177.96 <sup>a</sup>	11.50	170.8 <sup>a,b</sup>	9.48	0.007	
T-AOC (U/ml)	0.40	0.05	0.40	0.03	0.45	0.04	0.43	0.05	0.163	
<b>Cytokines</b>										
IL-1 $\beta$ (pg/ml)	29.60	0.16	29.17	0.17	29.46	0.18	29.63	0.16	0.227	
IL-4 (pg/ml)	55.29	0.35	54.74	0.24	54.44	0.22	54.81	0.25	0.129	
IL-6 (pg/ml)	43.62	4.08	36.50	3.25	32.52	0.24	37.79	3.21	0.105	
IL-10 (pg/ml)	65.33	1.22	63.43	0.90	62.34	0.11	64.26	1.17	0.181	
slgA ( $\mu\text{g/ml}$ )	2.98	0.02	3.00	0.00	2.98	0.16	2.98	0.01	0.799	

CAT, catalase; MDA, malondialdehyde; SOD, superoxide dismutase; ALP, alkaline phosphatase; GSH-px, glutathione peroxidase; T-AOC, total antioxidant capacity; slgA, secreted Ig.

<sup>a,b</sup> Mean values within a row with unlike superscript letters are significantly different ( $P < 0.05$ ).

\* Data were analysed by one-way ANOVA followed by Tukey's multiple comparisons test.

Etn-treated group, whereas no differences in Shannon, Chao1 and ACE diversity were observed among groups ( $P < 0.05$ ) (online Supplementary Table S1). The compositional differences were identified between Etn-treated and control groups by principal coordinate analyses using the Bray Curtis distance parameter (online Supplementary Fig. S1a) and Adonis results could be found in the online Supplementary Table S2. The non-metric multi-dimensional scaling plots of  $\beta$  diversity showed that there were differences at the phylum level of microbial composition among the Etn treatment groups (Fig. 1(a) and Table 3).

Firmicutes, Bacteroidetes and Proteobacteria were the most abundant phyla, and there were no differences in the relative abundance of Firmicutes among the four groups (Fig. 1(b)). Bacteroidetes was more prevalent in the 500- and 1000- $\mu\text{M}$  groups than in the other groups; however, Proteobacteria, Elusimicrobia and Tenericutes were lower abundant in those groups compared with the control and 250- $\mu\text{M}$  Etn groups (Table 3). Rats in the 500- $\mu\text{M}$  Etn group also had lower abundance ( $P < 0.05$ ) of Spirochaetes compared with rats in the other groups. Within the predominant genera (top twelve most abundant genera), the relative abundance of Desulfovibrio and Lachnospiraceae\_NK4A136\_group, Helicobacter and Ruminococcus\_1 were significantly lower in Etn-treated groups (250, 500 or 1000  $\mu\text{M}$ ) compared with the control group (Fig. 1(c)). A comparison of the composition of control and 500  $\mu\text{M}$  groups at the genus level revealed 18 OTU whose abundance was altered by 500  $\mu\text{M}$  Etn; only Ruminiclostridium\_6 and Eubacterium\_ruminantium\_group were relatively higher in the group treated with 500  $\mu\text{M}$  Etn, whereas others were more abundant in the control group (Fig. 1(d)). *Helicobacter ganmani*, *Clostridium leptum*, *E. coli* and *Ruminococcus flavefaciens* are the most abundant species in present study, and there were no significant differences in the species among the four groups (online Supplementary Fig. S1b and Table S3).

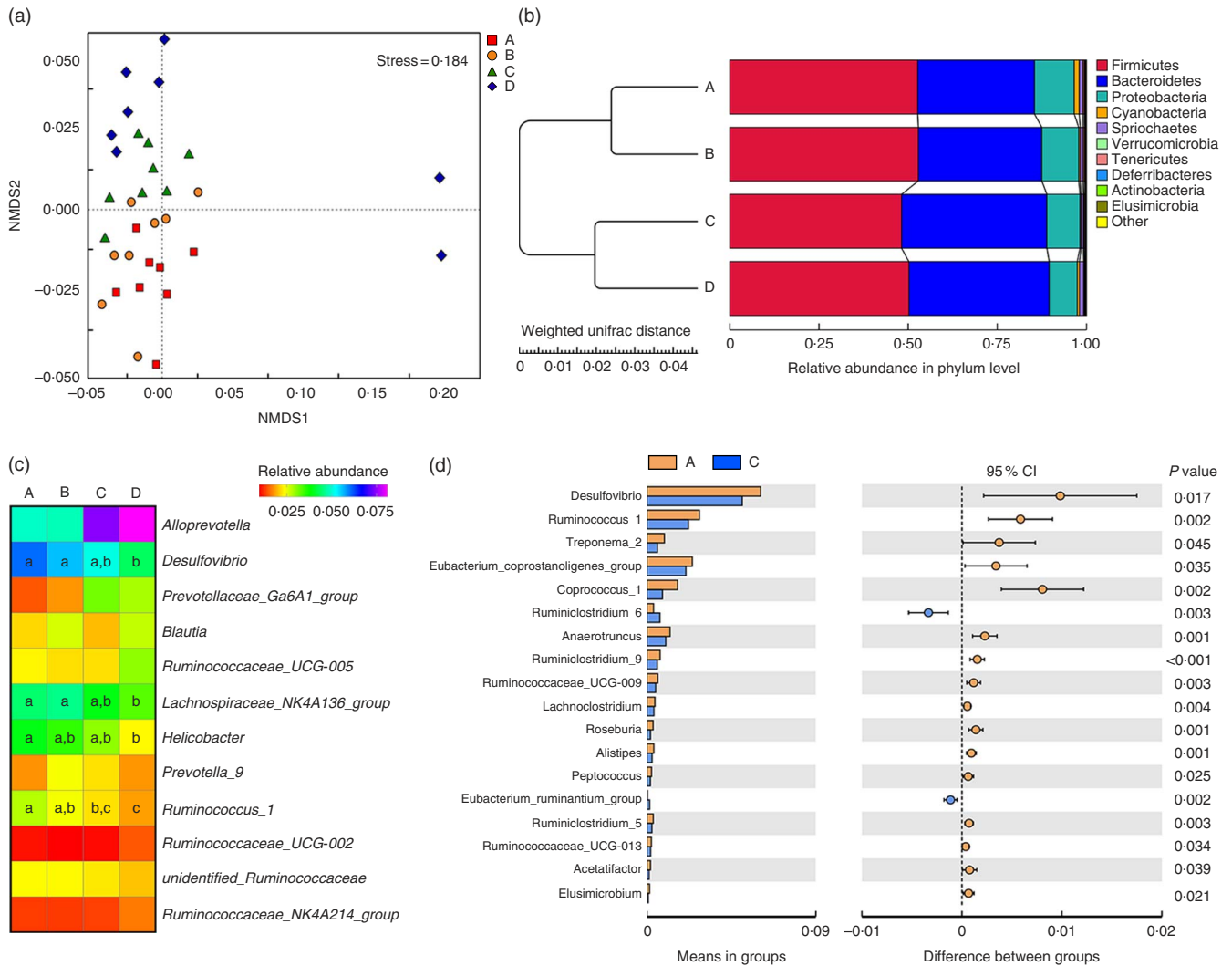
### Changes in metabolic functions of colonic microbiota driven by ethanolamine

Owing to the significant changes in the composition of gut microbiota, functional annotations of the microbiota were performed using PICRUSt. In the KEGG taxonomy level 3, twenty functional profiles that significantly differed among groups were taken into investigation (online Supplementary Table S4). A principal components analysis of functional profiles revealed that Etn modulated microbial function in a dose-dependent manner (Fig. 2(a)), which was consistent with the compositional differences described above (Fig. 1(a) and (b)). There were no functional differences between control and 250- $\mu\text{M}$  Etn groups by LEfse (LDA score = 2) analysis at KEGG taxonomic levels 2 and 3. However, Etn altered microbial metabolism and cellular processes at concentrations of 500 or 1000  $\mu\text{M}$  compared with the control group (Fig. 2(b)). Major metabolic functional pathways (at KEGG Level 3) were altered by different levels of Etn. Arginine and proline metabolism and fatty acid biosynthesis were decreased at a 1000- $\mu\text{M}$  Etn dose, whereas galactose metabolism and glycosphingolipid biosynthesis were enhanced (Fig. 2(c)). As revealed above, there did exist distinct differences in microbial structure of colonic microbiota driven by 500  $\mu\text{M}$  when compared with the control group (Fig. 1(d)). Correspondingly, significant functional differences between the control and 500- $\mu\text{M}$  Etn groups were found, including galactose and sphingolipid metabolism, lysosome and fatty acid biosynthesis and other important metabolic pathways or cellular events (Fig. 2(d)).

### Ethanolamine alters the metabolic phenotype of colonic microbiota of weaned rats

BugBase was used to verify the impacts of increased Etn on microbial metabolic phenotypes. In comparison with the





**Fig. 1.** Ethanolamine (Etn) influences colonic microbiota composition in weaning rats. (a) Non-metric multi-dimensional scaling (NMDS2) plots of  $\beta$  diversity. (b) Pair-group method with arithmetic mean plot with weighted unifracs distance of  $\beta$  diversity. (c) The change in the relative abundance of predominant genera as a response to increased ethanolamine levels. (d) Etn shaped distinct different microbiota in genus level from the control group at a concentration of 500  $\mu\text{M}$ .

**Table 3.** Ethanolamine alters colonic microbiota community composition\*

Taxonomic groups (%)	Control		Ethanolamine		P
	0 $\mu\text{M}$	250 $\mu\text{M}$	500 $\mu\text{M}$	1000 $\mu\text{M}$	
Firmicutes	52.67	52.85	48.16	50.20	0.175
Bacteroidetes	32.75 <sup>b</sup>	34.63 <sup>b</sup>	40.73 <sup>a</sup>	39.35 <sup>a</sup>	0.013
Proteobacteria	11.13 <sup>a</sup>	10.35 <sup>a</sup>	9.28 <sup>b</sup>	7.87 <sup>b</sup>	<0.001
Cyanobacteria	1.42 <sup>a</sup>	0.40 <sup>b</sup>	0.32 <sup>b</sup>	0.60 <sup>a</sup>	0.008
Spirochaetes	1.00 <sup>a</sup>	0.83 <sup>a</sup>	0.62 <sup>b</sup>	1.15 <sup>a</sup>	0.472
Verrucomicrobia	0.01	0.01	0.11	0.03	0.396
Tenericutes	0.36 <sup>a</sup>	0.36 <sup>a</sup>	0.30 <sup>b</sup>	0.24 <sup>b</sup>	0.037
Deferrribacteres	0.16	0.13	0.11	0.15	0.627
Actinobacteria	0.20	0.21	0.18	0.17	0.752
Elusimicrobia	0.14 <sup>a</sup>	0.10 <sup>a</sup>	0.07 <sup>b</sup>	0.08 <sup>b</sup>	0.041
Others	0.16	0.14	0.11	0.14	<0.001

<sup>a,b</sup> Mean values within a row with unlike superscript letters are significantly different ( $P < 0.05$ ).

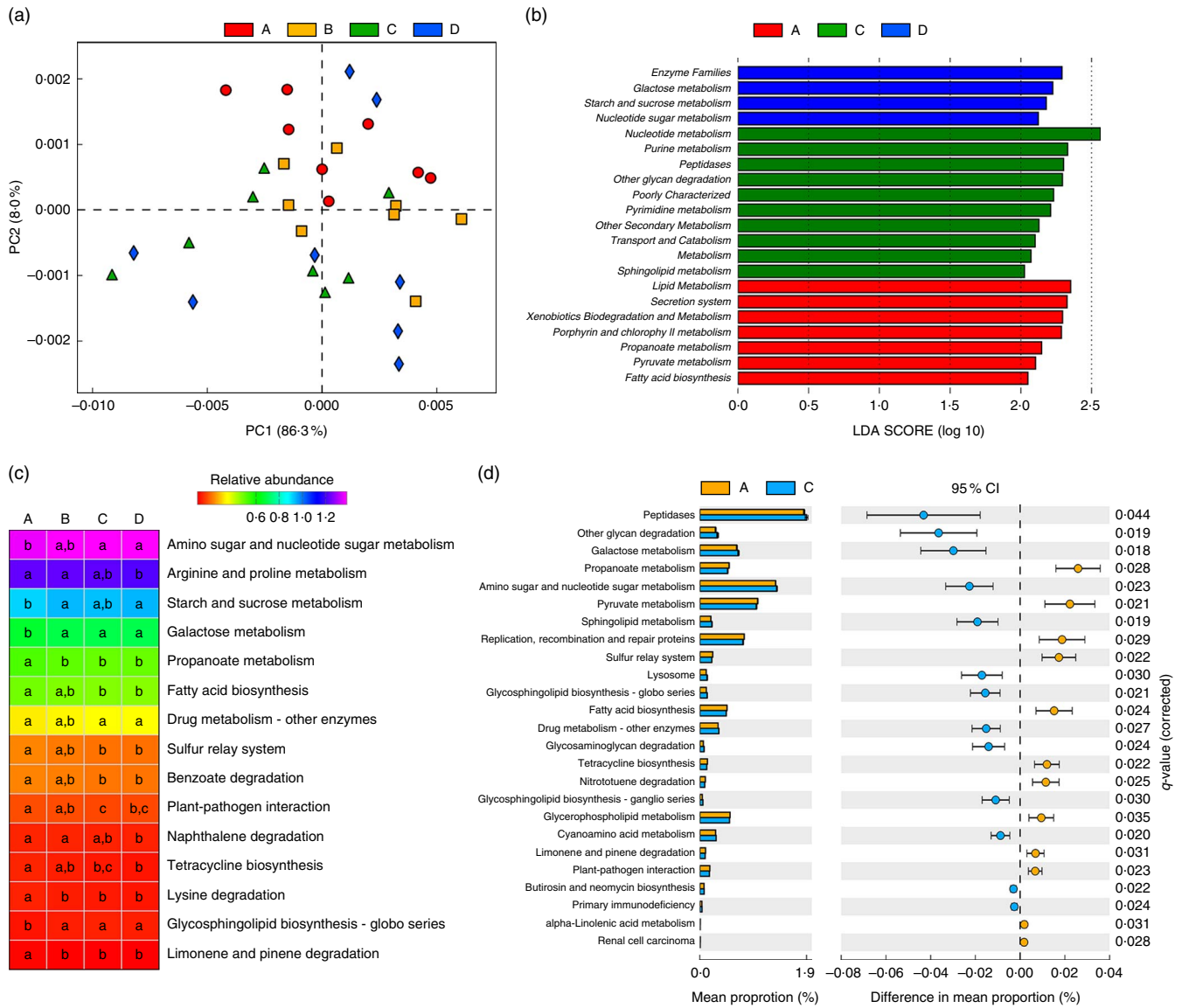
\* Data were analysed with the *t* test and are presented as the relative abundance of specific taxonomic groups.

control group, treatment with 250, 500 or 1000  $\mu\text{M}$  Etn decreased and increased the proportions of aerobic and anaerobic bacteria, respectively ( $P < 0.05$ ; Fig. 3(a) and (b)). There were

no differences in counts of facultative anaerobic bacteria, biofilm formation and the abundance of gram-positive and gram-negative bacteria among the four groups (Fig. 3(c)–(e), (g)). Moreover, 500- $\mu\text{M}$  Etn treatment increased the proportion of potentially pathogenic species (Fig. 3(f)). In addition, stress tolerance was increased and the prevalence of mobile elements was decreased at concentrations of 500 or 1000  $\mu\text{M}$  Etn relative to controls (Fig. 3(h) and (i)).

## Discussion

Etn is present in the blood and breast milk of mammals, and breast-feeding increases the accumulation of Etn in the GI tract of infants<sup>(9,11)</sup>. Our previous study showed that Etn, as an important component of milk, enhanced the proliferation of intestinal epithelial cells and promoted intestinal development and growth performance of weaned piglets<sup>(13,27)</sup>. However, the effects of Etn on intestinal function and microbiota of mammals need to be further elucidated.

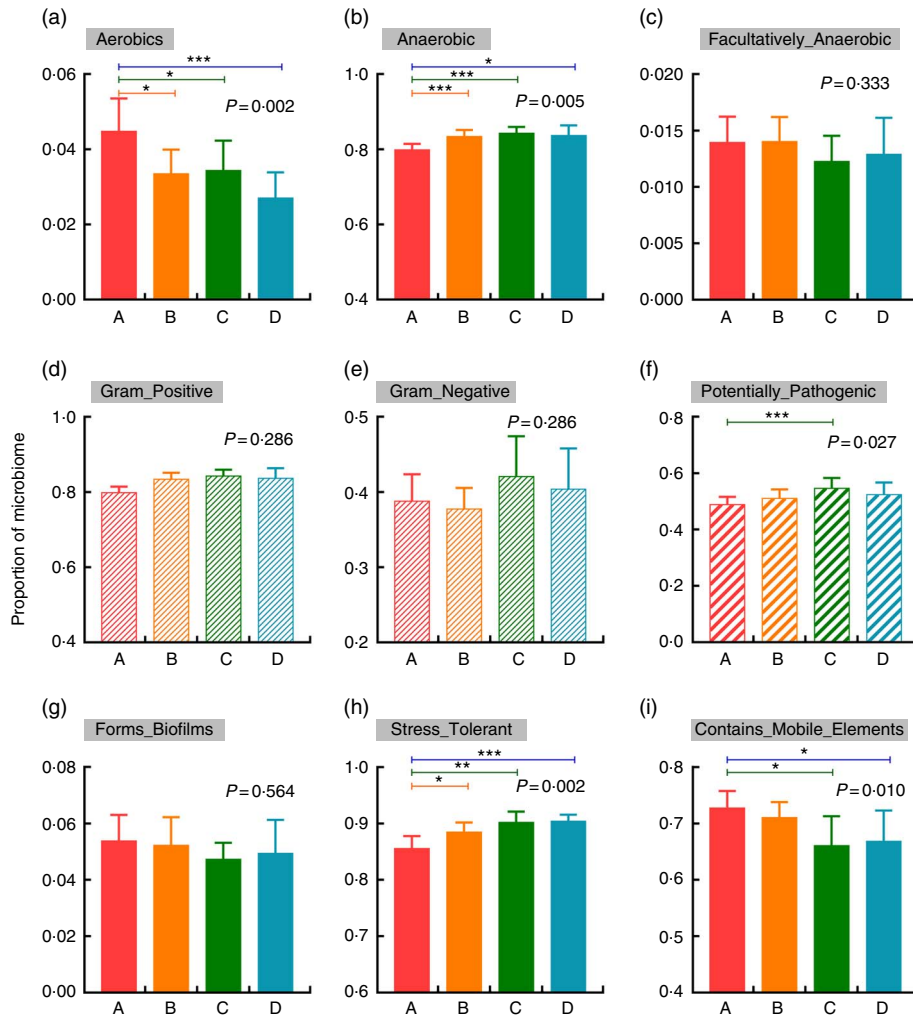


**Fig. 2.** Predictive functional profiling of microbiota at different ethanolamine (Etn) concentrations. (a) Principal components (PC) analysis plot of functional profiles upon Etn supplementation. (b) LEfse analysis at different Etn concentrations (A and B, 250 μM). (c) KEGG pathways (at level 3) altered by different Etn concentrations. (d) Functional differences between rats treated with 500 μM Etn and controls. Data were analysed with Welch's *t* test followed by a Tukey multiple comparisons test with Benjamin false discovery rate *P* value correction.

This study showed that there was no significant change on growth performance of weaned rats in response to Etn supplementation. The different response to Etn treatment on growth outcome between pig and rats could be because of animal species. Another possible explanation is that the breakdown of PE, which derived from ingested food and the turnover/exfoliation of intestinal epithelial cells, may cause the different response with regard to growth performance<sup>(8,20)</sup>. ALP is dependent on epithelial cell differentiation, and it is considered a key marker enzyme of cell differentiation in mature mammals<sup>(36,37)</sup>. A previous study showed that the gene expression of small intestinal ALP and catalytic affinity was decreased after weaning in pigs<sup>(38)</sup>. The intestinal VH or VH:CD ratio is a useful criterion to estimate the nutrient digestion and absorption of the small intestine. Although the morphology was

unchanged among the four groups, the activity of ALP increased in the 500-μM Etn group compared with the other groups. This result indicated that Etn did not affect the digestion and absorption of small intestine, which is consistent with the growth performance; however, it may promote the maturation of the enterocyte of weaned rats<sup>(8,11,20)</sup>.

Weaning-associated stress factors could disrupt oxidative balance and cause oxidative injury to the intestinal epithelium<sup>(39)</sup>. SOD and GSH-px are main antioxidant enzymes that neutralise superoxide anion<sup>(40)</sup>. The present study showed that the activities of both enzymes in the jejunal mucosa were increased in response to Etn treatment, suggesting enhanced endogenous antioxidant capacity in enterocytes. Cytokines play an important role in the immune activation and inflammatory response. The expression of IL-1β and IL-6 was up-regulated in



**Fig. 3.** Changes in the metabolic phenotype of microbiota by increased ethanolamine (Etn) concentrations. (a–c) Oxygen utilisation. (d–e) Gram bacterial classification. (f) Pathogenic risk. (g) Biofilm formation. (h) Oxidative stress tolerance. (i) Mobile genetic element content. Results are from BugBase and the relative abundances of discrete phenotypes were compared with pair-wise Mann–Whitney *U* tests with false discovery rate correction. \*  $P < 0.05$ , \*\*  $P < 0.01$ , \*\*\*  $P < 0.001$ .

the small intestine immediately post weaning (0–2 post weaning) and returned to preweaning levels in the following 2–8 d<sup>(41)</sup>. We did not observe differences in cytokines or sIgA concentrations in jejunal mucosa among groups. Intestinal IEL are part of the mucosal immune system and have been considered to serve a critical role in the mucosal immune system by performing a variety of regulatory functions, including cytokine production and so on<sup>(42,43)</sup>. Although the number of IEL on the jejunal mucosa in the 500 or 1000  $\mu\text{M}$  Etn group were the highest, there was no significant difference in comparison with that of the control group. This result was consistent with our finding on the cytokine expressions of jejunal mucosa and sIgA, which collectively suggested that Etn treatment did not induce enteric inflammation in weaned rats.

The interactions between the mammalian host and the microbiota have a significant impact on health and disease. Etn is an essential component of cell membranes and has profound signalling activity within mammalian cells by modulating inflammatory and intestinal physiology<sup>(19)</sup>. Etn treatments did not have significant impacts on microbial richness but altered

microbial diversity and community structure. As in most mammals, the gut microbiome is dominated by four bacterial phyla: Firmicutes, Bacteroidetes, Actinobacteria and Proteobacteria<sup>(44)</sup>. In the present study, the identified phylotypes include ten bacterial divisions, and it was dominated by two major phyla: Firmicutes (48–52%) and Bacteroidetes (32–40%). Etn-treated groups had a higher proportion of Bacteroidetes and lower proportion of Proteobacteria and cyanobacteria. A Previous study showed the higher numbers of Bacteroides in overweight women than in normal-weight women, suggesting a link between obesity and microbiota<sup>(45)</sup>. Metabolic pathways of colonic microbial communities involved in nutrient harvest were enriched in response to Etn treatment in the present study, which may indicate that gut microbiota should play a significant role in energy metabolism<sup>(46,47)</sup>.

This study also showed that the abundance of bacteria (e.g. *E. coli*) that can utilise Etn decreased with the increase of Etn doses, which was different in contrast to previous reports<sup>(17,48)</sup>. In addition, Etn altered the composition of colonic microbiota including the Spirochaetes, Tenericutes and Elusimicrobia taxa

when it was supplemented at 500 and 1000  $\mu\text{M}$ . Rats in the 500- $\mu\text{M}$  Etn group had the lowest abundance of Spirochaetes than rats in the other groups, which is an enteric pathogen that causes intestinal disorder in a variety of animal species. The present study also highlighted that Etn treatment enhanced intestinal antioxidant defence of microbiota in weaned rats, which may be consistent with the decreased antioxidant capacity of jejunum. Microbial density increases both from the proximal to the distal gut (in the jejunum up to  $10^4$  cells/g, and in the colon up to  $10^{12}$  cells/g)<sup>(41)</sup>. We speculated that the Etn may also affect the jejunal microbiome, which expands the host's own biochemical and metabolic capacity. Although the beneficial dosage of Etn is 500  $\mu\text{M}$ , this study also showed that Etn treatments increased the risk of potential pathogens at 500  $\mu\text{M}$ . This result indicted that Etn's dual role, as a C/N source and a signalling molecule, is beginning to emerge. Further research needs to be conducted to explore the effects of Etn on the function of host-specific microbiota.

In conclusion, we demonstrated here that Etn treatment improved intestinal antioxidant capacity and increased the intestinal cell differentiation marker enzyme activity. In addition, Etn increased anaerobic microbe populations and oxidative stress tolerance of colonic microbiota in weaning rats. These results indicate that suitable Etn supplementation may be helpful for the development of infant's intestine by altering gut microbiome and mucosal antioxidant capacity. Additional studies are needed to further clarify the effects of Etn on function of host-specific microbiota and the role of Etn in altering host-microbial interactions.

### Acknowledgements

The authors thank Shanghai E.K.M Biotechnology Company for material assistance.

This work was supported by grants from the National Natural Science Foundation of China (31572420; 31330075).

The authors' contributions were as follows: J. Z., X. X. and Y.-L. Y. designed the study; J. Z., L.-J. Z. and K.-X. W. performed the experiments and collected samples; J. Z. and X. X. analysed the data and wrote the manuscript; and Y.-L. Y., X. X., P. J. and J. Z. revised the manuscript.

The authors declare that the research was conducted in the absence of any commercial or financial relationships that could be construed as a potential conflict of interest.

### Supplementary material

For supplementary material/s referred to in this article, please visit <https://doi.org/10.1017/S0007114518001101>

### References

- Tremaroli V & Backhed F (2012) Functional interactions between the gut microbiota and host metabolism. *Nature* **489**, 242–249.
- Round JL & Mazmanian SK (2009) The gut microbiota shapes intestinal immune responses during health and disease. *Nat Rev Immunol* **9**, 313–323.
- Cacho NT & Lawrence RM (2017) Innate immunity and breast milk. *Front Immunol* **8**, 584.
- Chen L, Xu Y, Chen X, *et al.* (2017) The maturing development of gut microbiota in commercial piglets during the weaning transition. *Front Microbiol* **8**, 1688.
- Leon-Sicairos N, Lopez-Soto F, Reyes-Lopez M, *et al.* (2006) Amoebicidal activity of milk, apo-lactoferrin, sIgA and lysozyme. *Clin Med Res* **4**, 106–113.
- Zhou J, Xiong X, Wang K, *et al.* (2017) Ethanolamine metabolism in the mammalian gastrointestinal tract: mechanisms, patterns, and importance. *Curr Mol Med* **17**, 92–99.
- Garsin DA (2010) Ethanolamine utilization in bacterial pathogens: roles and regulation. *Nat Rev Microbiol* **8**, 290–295.
- Nawrocki KL, Wetzel D, Jones JB, *et al.* (2018) Ethanolamine is a valuable nutrient source that impacts *Clostridium difficile* pathogenesis. *Environ Microbiol* **20**, 1419–1435.
- Wishart DS, Jewison T, Guo AC, *et al.* (2013) HMDB 3.0 – The Human Metabolome Database in 2013. *Nucleic Acids Res* **41**, D801–D807.
- Sintsova A, Smith S, Subashchandrabose S, *et al.* (2018) Role of ethanolamine utilization genes in host colonization during urinary tract infection. *Infect Immun* **86**, e00542-17.
- Kaval KG & Garsin DA (2018) Ethanolamine utilization in bacteria. *MBio* **9**, e00066-18.
- Selathurai A, Kowalski GM, Burch ML, *et al.* (2015) The CDP-ethanolamine pathway regulates skeletal muscle diacylglycerol content and mitochondrial biogenesis without altering insulin sensitivity. *Cell Metab* **21**, 718–730.
- Yang HS, Xiong X, Wen QQ, *et al.* (2016) Effects of dietary supplementation with ethanolamine on intestine development and growth performance of weaned piglets. *J Anim Sci* **94**, 79–81.
- Moore TC & Escalante-Semerena JC (2016) The EutQ and EutP proteins are novel acetate kinases involved in ethanolamine catabolism: physiological implications for the function of the ethanolamine metabolosome in *Salmonella enterica*. *Mol Microbiol* **99**, 497–511.
- Lundgren BR, Sarwar Z, Pinto A, *et al.* (2016) Ethanolamine catabolism in *Pseudomonas aeruginosa* PAO1 is regulated by the enhancer-binding protein EatR (PA4021) and the alternative sigma factor RpoN. *J Bacteriol* **198**, 2318–2329.
- Anderson CJ & Kendall MM (2016) Location, location, location. *Salmonella* senses ethanolamine to gauge distinct host environments and coordinate gene expression. *Microb Cell* **3**, 89–91.
- Kendall MM, Gruber CC, Parker CT, *et al.* (2012) Ethanolamine controls expression of genes encoding components involved in interkingdom signaling and virulence in enterohemorrhagic *Escherichia coli* O157:H7. *MBio* **3**, e00050-12.
- Luzader DH, Clark DE, Gonyar LA, *et al.* (2013) EutR is a direct regulator of genes that contribute to metabolism and virulence in enterohemorrhagic *Escherichia coli* O157:H7. *J Bacteriol* **195**, 4947–4953.
- Anderson CJ, Clark DE, Adli M, *et al.* (2015) Ethanolamine signaling promotes salmonella niche recognition and adaptation during infection. *PLoS Pathog* **11**, e1005278.
- Patel D & Witt SN (2017) Ethanolamine and phosphatidylethanolamine: partners in health and disease. *Oxid Med Cell Longev* **2017**, 4829180.
- Cummins AG & Thompson FM (2002) Effect of breast milk and weaning on epithelial growth of the small intestine in humans. *Gut* **51**, 748–754.
- Minton K (2016) Mucosal immunology: weaning off food allergy. *Nat Rev Immunol* **16**, 132–133.
- Sweeney T & O'Doherty JV (2016) Marine macroalgal extracts to maintain gut homeostasis in the weaning piglet. *Domest Anim Endocrinol* **56**, Suppl., S84–S89.





24. Labus JS, Hollister EB, Jacobs J, *et al.* (2017) Differences in gut microbial composition correlate with regional brain volumes in irritable bowel syndrome. *Microbiome* **5**, 49.
25. Lunn PG (2000) The impact of infection and nutrition on gut function and growth in childhood. *Proc Nutr Soc* **59**, 147–154.
26. Russ A, Barnett M, McNabb W, *et al.* (2010) Post-weaning effects of milk and milk components on the intestinal mucosa in inflammation. *Mutat Res* **690**, 64–70.
27. Yang H, Xiong X, Li T, *et al.* (2016) Ethanolamine enhances the proliferation of intestinal epithelial cells via the mTOR signaling pathway and mitochondrial function. *In Vitro Cell Dev Biol Anim* **52**, 562–567.
28. Yin Y, Yao K, Liu Z, *et al.* (2010) Supplementing L-leucine to a low-protein diet increases tissue protein synthesis in weanling pigs. *Amino Acids* **39**, 1477–1486.
29. Xiong X, Yang HS, Wang XC, *et al.* (2015) Effect of low dosage of chito-oligosaccharide supplementation on intestinal morphology, immune response, antioxidant capacity, and barrier function in weaned piglets. *J Anim Sci* **93**, 1089–1097.
30. Caporaso JG, Kuczynski J, Stombaugh J, *et al.* (2010) QIIME allows analysis of high-throughput community sequencing data. *Nat Methods* **7**, 335–336.
31. Edgar RC (2013) UPARSE: highly accurate OTU sequences from microbial amplicon reads. *Nat Methods* **10**, 996–998.
32. Langille MG, Zaneveld J, Caporaso JG, *et al.* (2013) Predictive functional profiling of microbial communities using 16S rRNA marker gene sequences. *Nat Biotechnol* **31**, 814–821.
33. Mukherjee A, Chettri B, Langpoklakpam JS, *et al.* (2017) Bioinformatic approaches including predictive metagenomic profiling reveal characteristics of bacterial response to petroleum hydrocarbon contamination in diverse environments. *Sci Rep* **7**, 1108.
34. Parks DH, Tyson GW, Hugenholz P, *et al.* (2014) STAMP: statistical analysis of taxonomic and functional profiles. *Bioinformatics* **30**, 3123–3124.
35. Ward T, Larson J, Meulemans J, *et al.* (2017) BugBase predicts organism level microbiome phenotypes. <https://www.biorxiv.org/content/early/2017/05/02/133462> (accessed April 2018).
36. Buddington RK (1994) Nutrition and ontogenetic development of the intestine. *Can J Physiol Pharmacol* **72**, 251–259.
37. Hodin RA, Chamberlain SM & Meng S (1995) Pattern of rat intestinal brush-border enzyme gene expression changes with epithelial growth state. *Am J Physiol* **269**, C385.
38. Lackeyram D, Yang CB, Archbold T, *et al.* (2010) Early weaning reduces small intestinal alkaline phosphatase expression in pigs. *J Nutr* **140**, 461–468.
39. Yin J, Wu MM, Xiao H, *et al.* (2014) Development of an antioxidant system after early weaning in piglets. *J Anim Sci* **92**, 612–619.
40. Cand F & Verdeti J (1989) Superoxide dismutase, glutathione peroxidase, catalase, and lipid peroxidation in the major organs of the aging rats. *Free Radic Biol Med* **7**, 59–63.
41. Pie S, Lalles JP, Blazy F, *et al.* (2004) Weaning is associated with an upregulation of expression of inflammatory cytokines in the intestine of piglets. *J Nutr* **134**, 641–647.
42. Van Kaer L, Algood HMS, Singh K, *et al.* (2014) CD8alpha-alpha(+) innate-type lymphocytes in the intestinal epithelium mediate mucosal immunity. *Immunity* **41**, 451–464.
43. Li Z, Zhang C, Zhou Z, *et al.* (2012) Small intestinal intra-epithelial lymphocytes expressing CD8 and T cell receptor gamma delta are involved in bacterial clearance during *Salmonella enterica serovar Typhimurium* infection. *Infect Immun* **80**, 565–574.
44. Ley RE, Hamady M, Lozupone C, *et al.* (2008) Evolution of mammals and their gut microbes. *Science* **320**, 1647–1651.
45. Collado MC, Isolauri E, Laitinen K, *et al.* (2008) Distinct composition of gut microbiota during pregnancy in overweight and normal-weight women. *Am J Clin Nutr* **88**, 894–899.
46. Srikumar S & Fuchs TM (2011) Ethanolamine utilization contributes to proliferation of *Salmonella enterica Serovar Typhimurium* in food and in nematodes. *Appl Environ Microbiol* **77**, 281–290.
47. Kinross JM, Darzi AW & Nicholson JK (2011) Gut microbiome-host interactions in health and disease. *Genome Med* **3**, 14.
48. Srikumar S & Fuchs TM (2011) Ethanolamine utilization contributes to proliferation of *Salmonella enterica serovar Typhimurium* in food and in nematodes. *Appl Environ Microbiol* **77**, 281–290.

