

## Original Article

**Cite this article:** Toft H, Lien L, Neupane SP, Abebe DS, Tilden T, Wampold BE, and Bramness JG. (2020) Cytokine concentrations are related to level of mental distress in inpatients not using anti-inflammatory drugs. *Acta Neuropsychiatrica* 32: 23–31. doi: [10.1017/neu.2019.36](https://doi.org/10.1017/neu.2019.36)

Received: 23 November 2018  
Revised: 22 March 2019  
Accepted: 31 August 2019  
First published online: 30 October 2019


**Key words:**

cytokines; depression; inflammation; PTSD; anti-inflammatory agents

**Author for correspondence:** Helge Toft,

Email: [helge.toft@sykehuset-innlandet.no](mailto:helge.toft@sykehuset-innlandet.no)

# Cytokine concentrations are related to level of mental distress in inpatients not using anti-inflammatory drugs

Helge Toft<sup>1,2</sup> , Lars Lien<sup>1,3</sup>, Sudan P. Neupane<sup>1,4</sup>, Dawit S. Abebe<sup>1,5</sup>, Terje Tilden<sup>6</sup>, Bruce E. Wampold<sup>6,7</sup> and Jørgen G. Bramness<sup>1,8</sup>

<sup>1</sup>Norwegian National Advisory Unit on Concurrent Substance Abuse and Mental Health Disorders, Department of Mental Health, Innlandet Hospital Trust, Ottestad, Norway; <sup>2</sup>Faculty of Medicine, Institute of Clinical Medicine, University of Oslo, Oslo, Norway; <sup>3</sup>Department of Health Studies, Inland Norway University of Applied Sciences, Elverum, Norway; <sup>4</sup>Norwegian Center for Addiction Research (SERAF), Faculty of Medicine, Institute of Clinical Medicine, University of Oslo, Oslo, Norway; <sup>5</sup>Department of Nursing and Health Promotion, Oslo Metropolitan University, Oslo, Norway; <sup>6</sup>Research Institute, Modum Bad Psychiatric Center, Vikersund, Norway; <sup>7</sup>Department of counseling psychology, University of Wisconsin-Madison, Madison, WI, USA and <sup>8</sup>Faculty of Health Sciences, Institute of Clinical Medicine, UiT – Norway's Arctic University, Tromsø, Norway

**Abstract**

**Objective:** Cross-sectional data show elevated levels of circulating cytokines in psychiatric patients. The literature is divided concerning anti-inflammatory drugs' ability to relieve symptoms, questioning a causal link between inflammatory pathways and psychiatric conditions. We hypothesised that the development of circulating cytokine levels is related to mental distress, and that this relationship is affected by the use of anti-inflammatory drugs. **Methods:** The study was a longitudinal assessment of 12-week inpatient treatment at Modum Bad Psychiatric Center, Norway. Sera and self-reported Global Severity Index (GSI) scores, which measure psychological distress, were collected at admission ( $T_0$ ), halfway ( $T_1$ ) and before discharge ( $T_2$ ). Other variables known to distort the neuroimmune interplay were included. These were age, gender, diagnosis of PTSD, antidepressants and anti-inflammatory drugs. A total of 128 patients (92 women and 36 men) were included, and 28 were using anti-inflammatory medication. Multilevel modelling was used for data analysis. **Results:** Patients with higher levels of IL-1RA and MCP-1 had higher GSI scores ( $p = 0.005$  and  $p = 0.020$ ). PTSD patients scored higher on GSI than non-PTSD patients ( $p = 0.002$ ). These relationships were mostly present among those not using anti-inflammatory drugs ( $n = 99$ ), with higher levels of IL-1RA and MCP-1 being related to higher GSI score ( $p = 0.023$  and  $0.018$ , respectively). Again, PTSD patients showed higher GSI levels than non-PTSD patients ( $p = 0.014$ ). **Conclusions:** Cytokine levels were associated with level of mental distress as measured by the GSI scores, but this relationship was not present among those using anti-inflammatory drugs. We found no association between cytokine levels and development of GSI score over time.

**Significant outcomes**

- Cytokines were related to level of mental distress in psychiatric inpatients.
- Cytokines were not related to the progression of mental distress in treatment over time.
- Anti-inflammatory drugs seemed to modify the relationship between cytokines and mental distress.

**Limitations**

- Body mass index and smoking status were not assessed.
- The sample size was small and raises the question of type II error.
- Caution should be used in interpreting the results, as some patients had serum levels under detectable limit.
- Patients were not fasting before blood collection.

© Scandinavian College of Neuropsychopharmacology 2019. This is an Open Access article, distributed under the terms of the Creative Commons Attribution licence (<http://creativecommons.org/licenses/by/4.0/>), which permits unrestricted re-use, distribution, and reproduction in any medium, provided the original work is properly cited.

**Introduction**

Several studies have found an association between cytokine levels and severity of mental distress (Maes, 1995; Furtado & Katzman, 2015; Miller & Raison, 2016; Dalton *et al.*, 2018). Meta-analyses and systematic reviews of cross-sectional studies have shown that circulating pro-inflammatory

cytokines, such as interleukin (IL)-1, IL-6, and tumour necrosis factor- $\alpha$  (TNF- $\alpha$ ), are significantly elevated in depressed individuals as well as in a broad spectre of other psychiatric diagnoses compared to healthy controls (Dowlati *et al.*, 2010; Passos *et al.*, 2015; Dalton *et al.*, 2018). We have previously found both higher levels and a distinct escalation during treatment of pro-inflammatory and anti-inflammatory cytokines in patients with post-traumatic stress disorder (PTSD), but not for other psychiatric disorders (Toft *et al.*, 2018). There is evidence of a causal pathway from low-grade inflammation to depression, as raised inflammatory markers have been found to precede depressive symptoms in longitudinal studies (Valkanova *et al.*, 2013). There is, however, also evidence of an opposite direction, that is, mental distress preceding an inflammatory response (Wang *et al.*, 2017).

The notion that low-grade inflammation may lead to depression has been supported by a longitudinal study in the general population reporting that elevated levels of IL-6 was associated with psychological distress, and where low levels at the first measurement and follow-up after 6 years were associated with being symptom free (Virtanen *et al.*, 2015). Other studies have shown that patients with inflammatory diseases have greater risk of depression (Maes, 2011; Miller & Raison, 2016), that repeated exposure to systematic inflammation increased the risk of future depressive symptoms among women (Bell *et al.*, 2017), and pro-inflammatory agents are known to induce depression as a side effect (Schiepers *et al.*, 2005; Köhler *et al.*, 2016). This supports the notion of causality. Furthermore, cytokines and psychiatric symptoms in outpatients have been found to decline during treatment (Dahl *et al.*, 2016), and also to play a role in the progression and severity of established depressive disorders in various populations (Young *et al.*, 2014).

The growing understanding of inflammatory processes being related to psychiatric disorders has led to clinical trials using anti-inflammatory drugs in treatment of depressed patients. In such studies, the use of non-steroidal anti-inflammatory drugs (NSAIDs) has been associated with improved antidepressant treatment response, suggesting an antidepressant effect of anti-inflammatory treatment (Köhler *et al.*, 2014; Miller & Raison, 2016). It has been speculated that some patients have low-grade inflammation as a trait and may benefit from anti-inflammatory drugs (Morch *et al.*, 2017). However, anti-inflammatory drugs alone have shown a low to negligible effect on psychopathology (Eyre *et al.*, 2015), and may even contribute to more severe depression symptoms in patients treated with selective serotonin reuptake inhibitors (SSRI), seemingly attenuating the central effect of the SSRI treatment (Warner-Schmidt *et al.*, 2011). Such results underline the necessity that anti-inflammatory drugs are taken into consideration when assessing cytokines and mental health.

Even if the effects of anti-inflammatory drugs on mental distress seem to be ambiguous, it is probable that the use of such drugs may influence the pathomechanism between inflammatory processes and mental distress, as both NSAIDs (Müller *et al.*, 2006) and immuno-suppressants (Köhler *et al.*, 2014) inhibit the production of pro-inflammatory cytokines. The use of anti-viral drugs may also interfere with cytokine levels (Canivet *et al.*, 2015).

A 5-year follow-up study found higher levels of IL-1 $\beta$ , IL-1RA, and TNF- $\alpha$  at the first measurement to be related to depressive symptoms over time (van den Biggelaar *et al.*, 2007), a finding supported by a literature review (Dantzer *et al.*, 2008). There is also evidence on cytokines being related to development of mental disorders once it has already been established (Kim *et al.*, 2019). However, more research is needed as studies on the level of mental

distress seen in light of inflammatory biomarkers over time are still scarce, with inconsistent findings (Eyre *et al.*, 2015). In the present study we hypothesised that there is an association between elevated cytokine levels and mental distress in patients undergoing treatment. Thus, we aimed to investigate the relationship between cytokines levels and development of mental distress and the potential moderating role of anti-inflammatory drugs.

## Material and methods

### Study participants and recruitment procedure

Patients were recruited from Modum Bad Psychiatric Center, a specialised psychiatric centre in Norway, treating patients with long-standing or treatment-resistant trauma, anxiety, eating and depressive disorders. Patients with severe self-destructive behaviour or psychotic disorders were not eligible for admission. The facility offered group and individual therapies in a 12-week inpatient treatment programme. Therapy was paid by public insurance, and patients in work were entitled to sick leave while in treatment. Data were collected from March 2015 through April 2016.

Patients were recruited from the Depression, the Eating, the Anxiety, and the Trauma departments. The patients were admitted in groups of eight at a time. They were given a 15 min presentation during group therapy by the first author about the study during one of the first days of their stay. Written information was handed out, explaining the aim of the study and the procedures involved. A consent form was also distributed to each potential participant. Altogether 148 (59% of the total 249 patients approached) gave their written consent. One individual withdrew her consent 2 weeks later. We excluded 19 patients from the data material due to their having extreme cytokine levels above the 95th percentile, indicating possible acute infections. These 95th percentile limits were 436.6 pg/ml for IL-1RA and 216.3 pg/ml for MCP-1. One patient had missing values in cytokine data due to failed venipuncture. Altogether the present study comprised data provided by 92 women (72%, mean age 39.04 years, SD 11.26) and 36 men (28%, mean age 49.06 years, SD 9.36), giving a total of 128 patients. The 102 patients who did not participate comprised 81 women (79%, mean age 35.96, SD 11.77) and 21 men (21%, mean age 44.52, SD 8.58).

The material comprised venous blood samples and psychometric data. The blood samples and Hopkins Symptom Checklist 90 Revised (HSCL-90R) questionnaires were submitted within 1 week after entering treatment ( $T_0$ ), at halfway ( $T_1$ ), and a few days before discharge ( $T_2$ ). The study was approved by the Norwegian Regional Ethics Committee prior to data collection (reference number 2014/2189).

### Methods for clinical data

All patients were interviewed by trained psychologists or psychiatrists using the MINI clinical interview (Sheehan *et al.*, 1998). The MINI interview gives diagnoses within the 10th revision of the *International Classification of Diseases and Related Health Problems (ICD-10)*. The staff used a combination of psychometric questionnaires and clinical judgement taken into consideration when disorders were assessed. All disorders were in the spectrum of depression, anxiety, and eating disorders. Fifty-four patients had only one disorder, and 59 had two or more disorders. Thirty-two patients had PTSD as primary diagnosis, some with one or even two additional disorders. Fifteen patients had no registered diagnosis due to missing data. An overview of diagnoses and frequencies of the diagnoses are included in Supplementary

Table S1. Patients completed the self-reporting questionnaire HSCL-90R either on a computer or on a digital tablet. The HSCL-90R is a 90-item questionnaire measuring levels of psychological distress during the past 7 days, each item ranging from 0 to 4, giving a mean score of all responses as the Global Severity Index (GSI) (Derogatis *et al.*, 1973). The questionnaire assesses symptoms of somatisation, obsession and compulsion, depression, anxiety, and hostility. The HSCL-90R has been shown to provide a psychometrically valid evaluation of psychiatric patients regarding the severity of depression, specific anxiety, and interpersonal sensitivity (Bech *et al.*, 2014). A cut-off for caseness was set to a GSI score at 0.85 (Pedersen & Karterud, 2004). In comparison, a previous study has found the GSI to be 0.49 in healthy controls (Ryttila-Manninen *et al.*, 2016). The GSI is an overall scale taking various symptoms into account, thus tapping into symptoms common to a heterogeneous psychiatric patient sample (Ryttila-Manninen *et al.*, 2016). At  $T_0$ , all patients successfully submitted their GSI scores, but at  $T_1$ , data were missing on 6 patients and at  $T_2$ , on 13 patients. We also explored three subscales of the HSCL-90R. These were the scales for somatisation, anxiety, and depression. The pattern of missing values was the same as in the GSI.

Anti-inflammatory drugs were NSAIDs, anti-viral drugs, and immuno-suppressants. We do not know the exact indications for which these drugs were given. The dichotomous anti-inflammatory drugs variable was used to stratify the patients in two groups. An overview of the anti-inflammatory drugs is included in Supplementary Table S2. Patients were recorded as users of these drugs if they had used such drugs at three occasions or more during the treatment period. The drugs categorised as anti-depressants were SSRIs, norepinephrine-dopamine reuptake inhibitors (NDRI), tricyclic anti-depressives (TCAs), and serotonin-norepinephrine reuptake inhibitors (SNRIs). The drugs in use were recorded by looking into each patient's medical charts.

### Blood collection and serum preparation

The blood samples were drawn at  $T_0$ ,  $T_1$ , and  $T_2$ . They were collected between 08:00 a.m. and 09:00 a.m., except for 16 patients from the depression ward, who had their blood drawn between 12:00 am and 03:00 pm. Patients were not fasting and sat in an upright position when blood was collected. Vacuette 8 ml serum containers were used for blood collection. These were turned upside-down 8–10 times immediately after the blood was collected, and allowed to clot for 30–60 min. The samples were then spun at 1917 g for 10 min at room temperature. Separated serum samples were immediately put to freeze at  $-80^{\circ}\text{C}$  until assay.

### Cytokine and chemokine measurements

We analysed seven cytokines and one chemokine based on the available literature on the neuroimmune correlates of psychiatric disorders: IL-1 $\beta$ , IL-1RA, IL-6, IL-10, IL-17A, IFN- $\gamma$ , MCP-1, and TNF- $\alpha$ . Serum samples were thawed on ice, vortexed, and then spun down a tube with 250  $\mu\text{l}$  serum at  $14\,000 \times g$  for 10 min at  $4^{\circ}\text{C}$ , before dilution (1 : 5) and further processing. The serum levels were measured in picograms per millilitre (pg/ml). The cytokine measurements were performed using Bio-Plex xMAP technology (Bio-Rad, Austin, TX, USA) with a Luminex IS 100 instrument (Bio-Rad, Hercules, CA, USA), powered using Bio-Plex Manager (version 6.0.1) software. Multiplex bead-based technologies such as Luminex allow detection and quantification of multiple cytokines with good efficiency, speed, and dynamic range at reasonable

cost. The assay was performed according to the manufacturer's instructions, but an additional standard point was included. To achieve a more reliable result, individual sets of samples from patients were run in the same assay, all samples were assayed in duplicate, and a magnetic plate washer was used during assay set-up. The StatLIA software package (ver. 3.2; Brendan Scientific, Carlsbad, CA, USA) incorporates a weighted, five-parameter logistic curve-fitting method and was used to calculate sample cytokine concentrations. One longitudinal control from each participant was used for multiple analyses on each plate to define the intra-plate CVs; IL-1RA (3.0%) and MCP-1 (4.0%). Longitudinal controls were also used in order to validate the inter-assay (i.e., between plates) coefficient of variability (CV). The CVs were 10.2% for IL-1RA and 6.7% for MCP-1. An inter-assay per cent CV of 10–12% is common (and acceptable). The mean inter-assay per cent CV for all sample plates was 8.5%. The limit of detection (LOD) was 3 pg/ml for IL-1RA and 0.76 pg/ml for MCP-1.

### Choice of cytokines and imputation

We investigated cytokine IL-1RA and chemokine MCP-1 due to their robustness and very high detectability, a finding in line with other studies (Leemasawatdigul & Gappa-Fahlenkamp, 2011; Holub *et al.*, 2013). Also, these cytokines had fewer than 6% below LOD. Cytokine levels below the LOD were replaced with the LOD value. Taking all three blood sampling occasions into consideration, 423 samples were collected. For IL-1RA, we imputed one value (0.2%). For MCP-1, we imputed 25 values (5.9%). We excluded six of the cytokines due to a rather high number of values below LOD. There were 194 (45.9%) values below LOD for IL-1 $\beta$ , 148 (35.0%) for TNF- $\alpha$ , 200 (47.3%) for IL-6, 226 (53.4%) for IL-10, 384 (90.8%) for IL-17, and 332 (78.5%) for interferon-gamma (IFN- $\gamma$ ).

### Statistical analyses

The Mann-Whitney  $U$ -test and Pearson's chi square were used when analysing demographic data. Non-normally distributed cytokines were attempted normalised by log-transformation. The cytokines were, however, also skewed following log-transformation, and the non-transformed cytokine values were ultimately used. Multilevel models were used to assess the repeated measurements of cytokines and GSI (Rabe-Hesketh & Skrondal, 2016). Main effects of cytokines and cytokines in interaction with time were analysed. We stratified the patients on the use of anti-inflammatory drugs to specifically explore the potential effect of using such drugs. This resulted in two groups ( $n = 28$  for users and  $n = 99$  for non-users of such drugs). Power analysis was conducted with the software G\*Power, release 3.1.9.4, to assess the achieved statistical power with the given sample size. With a standardised mean difference of  $d = -0.54$  (Köhler *et al.*, 2014), the power was found to be 0.71, giving a 29% chance of not finding an effect even if present. Further, we specifically assessed the relationship between PTSD and GSI since we have previously found the PTSD patients to differ from patients without PTSD (Toft *et al.*, 2018). We also assessed the relationship between anti-depressants and GSI in the aforementioned strata in order to distinguish potential effects of different drugs. IL-1RA and MCP-1 were analyzed separately, thus constituting trivariate multilevel analyses with time as predictor variable, the cytokine as explanatory variable, and GSI as dependent variable. The material comprised three measurements of each patient, giving a structure of GSI score nested

**Table 1.** Clinical information of study participants across the treatment period categorised on the use of anti-inflammatory drugs

Variable		Not using	Using	<i>p</i> -value
		<i>n</i> = 100	<i>n</i> = 28	
Demography				
Women	<i>n</i> (%)	69 (54%)	23 (18%)	0.018*
Age	Mean (SD)	41.89 (11.61)	41.71 (11.67)	0.787†
Cytokines‡				
IL-1RA	Mean (SD)	36.96 (50.86)	43.08 (46.56)	0.026
MCP-1	Mean (SD)	25.53 (29.46)	34.56 (24.35)	< 0.001
Mental distress				
GSI	Mean (SD)	1.32 (0.67)	1.53 (0.76)	0.033
Medication				
Anti-depressants (not using)	<i>n</i> (%)	76 (59%)	15 (12%)	< 0.001
Anti-depressants (using)	<i>n</i> (%)	24 (19%)	13 (10%)	
PTSD diagnosis				
No PTSD	<i>n</i> (%)	58 (51%)	13 (11.5%)	0.008
PTSD	<i>n</i> (%)	29 (26%)	13 (11.5%)	

GSI, Global Severity Index; IL-1RA, interleukin-1 receptor antagonist; MCP-1, monocyte chemoattractant protein-1; PTSD, post-traumatic stress disorder.

\*Pearson chi square was used for categorical variables.

†The Mann-Whitney *U*-test was used for continuous variables.

‡Cytokine levels in picograms per millilitre (pg/ml).

within patients. We disentangled the between- and within-subjects effects from the total effects. The within-subjects effects represent the expected change in GSI on average for a patient over the 12 weeks of treatment. The between-subjects effects indicate that, on average, higher cytokine levels increase the GSI by the given coefficient (Curran & Bauer, 2011). The process of disentangling the within- and between-subjects effects involved group-mean centering of the cytokine variables. The multilevel modelling was performed in a stepwise approach with fixed effects of cytokines and time, with subject ID as random intercept. A random slope of time was added to allow the slopes to vary across time. A likelihood ratio test was performed to assess model fit. The best model fit was chosen based on the  $-2$  Log Likelihood and Bayes Information Criterion (BIC), and formally confirmed using likelihood ratio test. A model with fixed effects and random intercept gave a better fit than a model which included random slope (likelihood ratio test  $\chi^2(2) = 1.93$ ,  $p = 0.381$ ). The predicted fixed and random effects of time on GSI are shown in Supplementary Table S3. The assumption of linearity in the dependent GSI variable across time was visually inspected with spaghetti plot and considered met. The assumption of homoscedastic residuals was assessed with a likelihood ratio test ( $\chi^2(2) = 1.01$ ,  $p = 0.603$ ). The non-significant test confirmed that the assumption of homoscedastic residuals was met. Normality of residual distribution was assessed with QQ-plot and a histogram with a Gauss curve which showed normally distributed residuals and a nearly perfect normal curve. Restricted maximum likelihood (REML) was used in all multilevel model estimations due to small sample size, and maximum likelihood (ML) was used for model comparison. Those who did not submit all three GSI scores were defined as missing completely at random (MCAR), which indicated no specific pattern of missing data. Consequently, there was no increased variability which could have biased the regression coefficients. MCAR was

confirmed by Little's MCAR test (Little, 1988) with  $\chi^2 = 0.576$  ( $p = 0.902$ ). All tests were two-sided, and *p*-values below 0.05 were considered statistically significant. No correction for multiple hypothesis testing was implemented as we considered the study to be exploratory. The HSCL-90R subscales anxiety, somatisation, and depression were analysed, but did not provide different results (included in Supplementary Table S4). Also, we explored all longitudinal analyses with adjustment for age and sex, but this did not significantly change any results (adjusted analyses are shown in Supplementary Table S5). Therefore, we chose to present unadjusted results. The statistical package STATA (StataCorp. 2015. Stata Statistical Software: Release 15. College Station, TX: StataCorp LP) was used for all statistical analyses.

## Results

Table 1 shows demographic variables, cytokine levels, use of anti-depressive medications, and PTSD diagnosis in those not using or using anti-inflammatory drugs. There were significantly higher levels of MCP-1 and IL-1RA in those using anti-inflammatory drugs ( $p < 0.001$  and  $p = 0.026$ , respectively). There were also significantly more patients without PTSD and without anti-depressive drugs who also were not using anti-inflammatory drugs ( $p < 0.001$  and  $p = 0.008$ , respectively).

Table 2A and B presents the multilevel models of levels and changes in GSI over time. The table is divided in three, where Table 2A presents the results of all patients ( $n = 128$ ), Table 2B users of anti-inflammatory medication ( $n = 28$ ) and Table 2C non-users ( $n = 100$  in total, with 99 of these patients submitted blood samples). In Table 2A, each variable was run as a separate explanatory variable on GSI, first as main effect only and then in interaction with time. There was a significant main effect of IL-1RA ( $p = 0.005$ ), MCP-1 ( $p = 0.020$ ) and having PTSD disorder



**Table 2A.** Trivariate linear mixed effects models of characteristics and mean cytokine levels across treatment on GSI for all patients

Variable	<i>n</i>	Main effect on GSI		Interaction with time on GSI	
		$\beta$ (SE)	Sig.	$\beta$ (SE)	Sig.
Age	128	-0.005 (0.005)	0.323	<-0.001 (< 0.001)	<b>0.025</b>
Women	92	0.175 (0.121)	0.152	-0.001 (0.010)	0.878
IL-1RA	127	0.004 (0.001)	<b>0.005</b>	<0.001 (0.001)	0.680
MCP-1	127	0.005 (0.002)	<b>0.020</b>	<0.001 (0.002)	0.809
PTSD diagnosis	42	0.356 (0.112)	<b>0.002</b>	0.014 (0.011)	0.152
Anti-inflam.*	28	0.224 (0.132)	0.093	0.017 (0.011)	0.108
Anti-depressives	76	-0.001 (0.102)	0.991	-0.004 (0.010)	0.676

GSI, Global Severity Index;  $\beta$  (SE), regression coefficient (standard error); IL-1RA, interleukin-1 receptor antagonist; MCP-1, monocyte chemoattractant protein-1; PTSD, post-traumatic stress disorder.

Bold values represent significance value at  $p = 0.01$ ,  $p = 0.05$  and  $p = 0.01$ .

\*Anti-inflammatory drugs. All regression models run with time as predictor variable.

**Table 2B.** Trivariate linear mixed effects models of characteristics and mean cytokine levels across treatment on GSI for patients using anti-inflammatory drugs

Variable	<i>n</i>	Main effect on GSI		Interaction with time on GSI	
		$\beta$ (SE)	Sig.	$\beta$ (SE)	Sig.
Age	28	-0.021 (0.011)	0.061	-0.002 (0.001)	0.092
Women	23	-0.031 (0.348)	0.930	0.011 (0.025)	0.659
IL-1RA	28	0.004 (0.003)	0.186	<-0.001 (< 0.001)	0.885
MCP-1	28	0.001 (0.006)	0.892	<-0.001 (< 0.001)	0.702
PTSD diagnosis	16	0.432 (0.273)	0.127	0.038 (0.021)	0.077
Anti-depressives	13	0.044 (0.204)	0.831	-0.020 (0.021)	0.359

GSI, Global Severity Index;  $\beta$  (SE), regression coefficient (standard error); IL-1RA, interleukin-1 receptor antagonist; MCP-1, monocyte chemoattractant protein-1; PTSD, post-traumatic stress disorder.

All regression models run with time as predictor variable.

**Table 2C.** Trivariate linear mixed effects models of characteristics and mean cytokine levels across treatment on GSI for patients not using anti-inflammatory drugs

Variable	<i>n</i>	Main effect on GSI		Interaction with time on GSI	
		$\beta$ (SE)	Sig.	$\beta$ (SE)	Sig.
Age	100	<-0.001 (0.005)	0.992	<-0.001 (< 0.001)	0.101
Women	48	0.189 (0.128)	0.142	-0.006 (0.010)	0.577
IL-1RA	99	0.004 (0.002)	<b>0.023</b>	<0.001 (0.001)	0.623
MCP-1	99	0.006 (0.002)	<b>0.018</b>	<0.001 (0.002)	0.849
PTSD diagnosis	26	0.306 (0.122)	<b>0.014</b>	0.005 (0.011)	0.669
Anti-depressives	24	-0.032 (0.005)	0.787	-0.004 (0.012)	0.760

GSI, Global Severity Index;  $\beta$  (SE), regression coefficient (standard error); IL-1RA, interleukin-1 receptor antagonist; MCP-1, monocyte chemoattractant protein-1; PTSD, post-traumatic stress disorder. IL-1RA,  $p = 0.023$ .

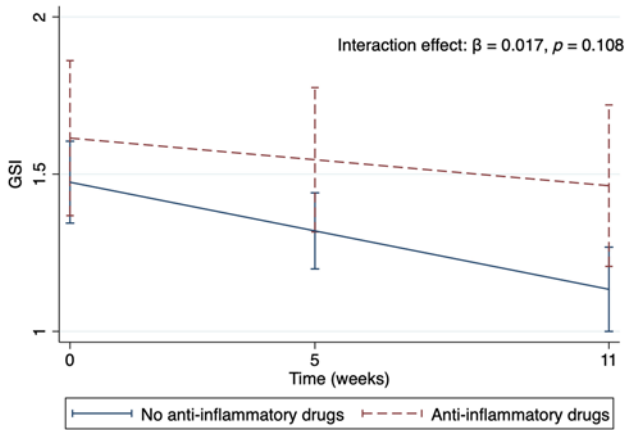
Bold values represent significance value at  $p = 0.05$ .

All regression models run with time as predictor variable.

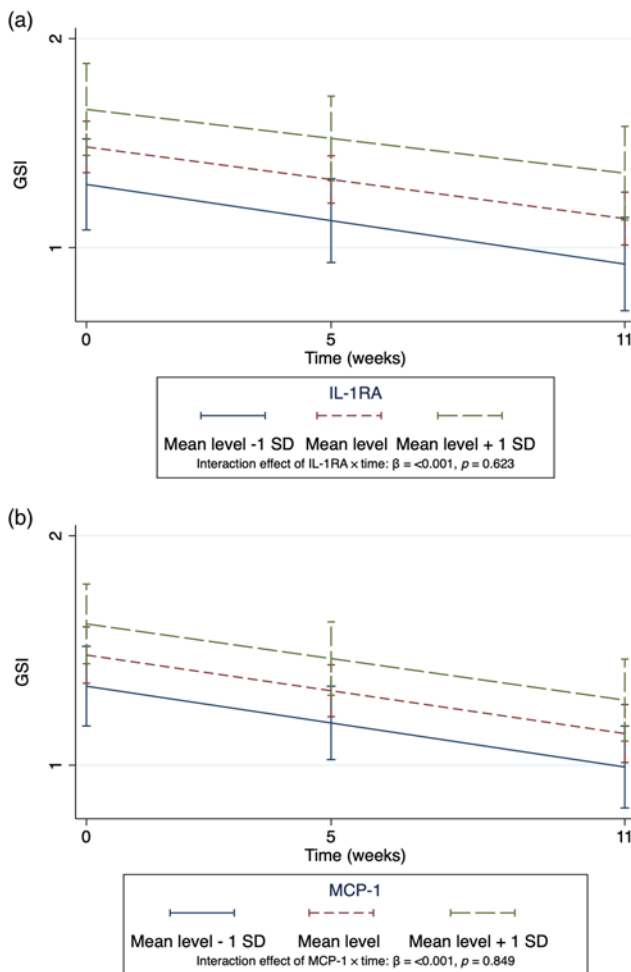
( $p = 0.002$ ) on GSI. The only variable related to the slope of GSI over time was age ( $p = 0.025$ ), indicating that older patients improve more in mental distress over time.

Table 2B shows the main effect and interaction with time on GSI in those patients using anti-inflammatory drugs. We found no associations in this stratum. In those not using anti-inflammatory drugs (Table 2C), there were significant main effects of IL-1RA

( $p = 0.023$ ), MCP-1 ( $p = 0.018$ ) and having PTSD disorder ( $p = 0.014$ ) on GSI. Together, Tables 2B and C show that among those not using anti-inflammatory drugs, GSI levels were significantly higher in the PTSD sample compared to non-PTSD patients. This difference was not present in those using anti-inflammatory drugs. Time interaction did not show any significant results in either of the two strata.



**Fig. 1.** Intercept and slopes in users and non-users of anti-inflammatory drugs depicting the decline levels of GSI (95% CI) during the treatment period. **Interaction effect of anti-inflammatory drugs with time on GSI.** The graph visualises the trajectories of the GSI from the multilevel model found in Table 2A. GSI, Global Severity Index.



**Fig. 2.** (A and B) Intercepts and slopes of GSI in non-users ( $n = 99$ ) of inflammatory drugs.

The declining trajectories of GSI are explained by the time variable (as shown in Supplementary Table S5). The GSI is categorised according to level of the inflammatory markers (mean level  $\pm 1$  SD). The graphs visualise the trajectories of the GSI from the multilevel models in Table 2C. GSI, Global Severity Index. IL-1RA, interleukin-1 receptor antagonist; MCP-1, monocyte chemoattractant protein-1.

Fig. 1 shows the intercept and slope of GSI over time in the patients according to their use of anti-inflammatory drugs. There was a tendency that patients who used anti-inflammatory drugs had higher level of GSI, also reflected in Table 2A ( $p = 0.093$ ). The slope of GSI in those who did not use anti-inflammatory drugs was significantly different from zero ( $\beta = -0.03$ ,  $SE = 0.005$ ,  $p < 0.001$ ), indicating that there was a reduction in symptoms over time. The slope of GSI in the users of anti-inflammatory drugs did not reach significance in decline over time ( $\beta = -0.01$ ,  $SE = 0.01$ ,  $p = 0.149$ ), and the difference between the two groups was not significant, as shown in Table 2A ( $p = 0.108$ ).

Fig. 2A and B shows the intercepts and slopes of GSI over time for the patients who did not use anti-inflammatory drugs, as shown in Table 2C. The three slopes categorise the patients by the mean level  $\pm 1$  SD of IL-1RA and MCP-1 according to their corresponding GSI level. The slopes of the GSI scores declined throughout treatment for all patients, and these slopes were significantly different from zero ( $p < 0.001$ ).

## Discussion

In patients undergoing psychiatric treatment, those with higher levels of IL-1RA and MCP-1 had higher levels of mental distress. There was a decreasing slope of GSI over time for the older patients, indicating that older patients benefited more from treatment. When stratifying according to the use of anti-inflammatory drugs during treatment, we found associations between levels of cytokines and GSI only among those not using anti-inflammatory drugs. There seemed to be an interaction between the use of anti-inflammatory drugs and cytokine levels with the level of mental distress in psychiatric patients in treatment. We did not find a relationship between cytokine levels and the development of GSI scores over time. We still believe our finding underscores the need for taking anti-inflammatory drugs into account in immunopsychiatric investigations and in treatment effect evaluation.

The relationship between cytokine level and degree of mental distress is in line with numerous studies on many different groups of patients with psychiatric diagnosis (Maes *et al.*, 1990; Smith, 1991; Dowlati *et al.*, 2010). The chemokine MCP-1 induces leukocyte infiltration in the CNS and is associated with neuronal damage, which is why it has been studied for its role in depression (Young *et al.*, 2014). Our finding that MCP-1 was related to level of mental distress is in accordance with a series of studies. A review of studies on inflammatory processes in major depressive disorder showed that the synthesis of MCP-1 is involved in both the aetiology and progress of the disorder (Young *et al.*, 2014). The association between elevated MCP-1 and depression and anxiety symptom severity has also been found by others (Vogelzangs *et al.*, 2016), but results are mixed, as serum MCP-1 has also been found to be lowered in patients with MDD (Young *et al.*, 2014). The anti-inflammatory cytokine IL-1RA is also known to be elevated in depression and anxiety patients. The reason for this has been suggested to be due to an increased innate immune response, which involves both pro- and anti-inflammatory cytokine and chemokine production (Maes *et al.*, 1997; Dahl *et al.*, 2014).

We did not find that cytokine levels were related to the progress of mental distress. This discrepancy may have different explanations. An observation period of 12 weeks may not be sufficient to pick up on changes over time. Furthermore, patients enrolled at Modum Bad Psychiatric Center were patients with severe mental disease, often for many years, possibly carrying

high cytokine levels as a trait feature. Also, the variety of diagnoses may explain a wide spread in cytokine levels in our study population. It has been suggested that anti-inflammatory drugs may play a role in outcome of PTSD by altering neuro-immune processes (Miller *et al.*, 2018; Waheed *et al.*, 2018) and thus contribute to mental recovery. Among those not using anti-inflammatory drugs, the PTSD patients had significantly higher GSI levels than non-PTSD patients. This difference was attenuated in those using anti-inflammatory drugs. This implies that the use of anti-inflammatory drugs affects GSI levels across PTSD diagnosis and suggests other researchers in the field should assess the use of such drugs in future studies of PTSD patients.

The relationship between cytokine level and mental distress was only present among those not using anti-inflammatory drugs. The lack of a relationship between cytokines and mental distress among those using anti-inflammatory drugs may be that both the reason for using these drugs, often an inflammation, and the drugs themselves may influence the level of cytokines much more than mental distress. Furthermore, it has been suggested that anti-inflammatory drugs could be used in the treatment of depression, as it reduces inflammation (Young *et al.*, 2014), thus reducing depressive symptoms, especially for the depression patients who are labelled as treatment-resistant due to treatment unresponsiveness (Kornstein & Schneider, 2001). The mechanism is believed to be the inhibition of enzyme cyclooxygenase-1 (COX-1). COX-1 is a major player in modulation of pro-inflammatory microglia activation, and aspirin in particular has been postulated as particularly promising, but still experimental and hypothetical (Baune, 2017). However, the effect of anti-inflammatory medications has been found to exhibit efficacy in treatment-resistant depression patients with high-sensitivity CRP (hs-CRP) concentrations greater than 5 mg/l, but not for treatment-resistant depression with smaller hs-CRP concentrations (Raison *et al.*, 2013). This suggests subgroups of depression patients respond differently to drugs according to inflammatory level. Together with our finding on different associations in PTSD patients according to stratification, a screening of inflammatory markers in patients seeking treatment could be warranted.

There are some limitations to mention. The patients were not fasting when blood samples were drawn. Eating has been found to be associated with increased MCP-1 (Dixit *et al.*, 2011). Body mass index (BMI) of the patients was not assessed in this study. Adipose tissue produces pro-inflammatory cytokines, meaning that body fat is a possible confounder (Calder *et al.*, 2011). We did not assess smoking status. Smokers have been found to have a higher basal level of cytokines when compared to non-smokers (Belchamber *et al.*, 2014). Physical exercise might affect the levels of circulating cytokines (Phillips & Fahimi, 2018). We did not record the level of exercise before blood samples were drawn. Conditions causing systemic inflammation, for instance hepatitis, could potentially bias the cytokine levels. The blood samples were collected in the afternoon for 16 patients. During clotting, monocytes may begin releasing MCP-1. However, increase in the protein levels of MCP has been found only after several hours (Campbell *et al.*, 2017). Also, future studies will benefit from more sensitive assay techniques as well as inclusion of multiple cytokines of the pro-, anti-, and regulatory classes. The reader should bear in mind that the sample size is small and there is a risk of type 2 errors. The study showed that the levels of cytokine IL-1RA, chemokine MCP-1 and PTSD diagnosis were related to level of GSI. The use of anti-inflammatory drugs appeared to have an immunomodulating effect on this relationship.

**Supplementary material.** To view supplementary material for this article, please visit <https://doi.org/10.1017/neu.2019.36>

**Acknowledgements.** The study was funded by South-Eastern Norway Regional Health Authority through the Inland Hospital Trust. We want to thank the staff and the patients at Modum Bad Psychiatric Center for participating in the study. The authors have no conflicts of interest that might influence the current study.

**Author contributions.** HT was responsible for recruiting patients, collecting the blood samples, and drafting and revising the manuscript. HT also performed the statistical analyses. LL was responsible for the design and planning of the study and was involved in writing and revision of the manuscript. SPN was involved in designing and planning of the study and in writing and revision of the manuscript. DSA was involved in revision of the manuscript and supervision of the statistical analyses. TT was involved in planning of the study and in revision of the manuscript. BEW was involved in planning of the study and in revision of the manuscript. JGB was, together with LL, responsible for the design and planning of the study, and was involved in writing and revision of the manuscript. All authors revised the final version and approved for submission.

**Financial support.** The process of designing the study, collecting and analysing the data material, and writing the manuscript was funded by South-Eastern Norway Regional Health Authority through the Innlandet Hospital Trust.

**Conflict of interest.** None.

**Ethical standards.** The authors assert that all procedures contributing to this work comply with the ethical standards of the relevant national and institutional committees on human experimentation and with the Helsinki Declaration of 1975, as revised in 2008 (Williams, 2008).

## References

- Baune BT (2017) Are non-steroidal anti-inflammatory drugs clinically suitable for the treatment of symptoms in depression-associated inflammation? *Current Topics in Behavioral Neurosciences* 31, 303–319.
- Bech P, Bille J, Moller SB, Hellstrom LC and Ostergaard SD (2014) Psychometric validation of the Hopkins Symptom Checklist (SCL-90) subscales for depression, anxiety, and interpersonal sensitivity. *Journal of Affective Disorders* 160, 98–103.
- Belchamber K, Hall DA and Hourani SM (2014) Smoking enhances the pro-inflammatory effects of nucleotides on cytokine release from human lung. *PLoS One* 9, e99711.
- Bell JA, Kivimaki M, Bullmore ET, Steptoe A, Consortium MRCI and Carvalho LA (2017) Repeated exposure to systemic inflammation and risk of new depressive symptoms among older adults. *Transl Psychiatry* 7, e1208.
- Calder PC, Ahluwalia N, Brouns F, Buetler T, Clement K, Cunningham K, Esposito K, Jonsson LS, Kolb H, Lansink M, Marcos A, Margioris A, Matusheski N, Nordmann H, O'Brien J, Pugliese G, Rizkalla S, Schalkwijk C, Tuomilehto J, Warnberg J, Watzl B and Winklhofer-Roob BM (2011) Dietary factors and low-grade inflammation in relation to overweight and obesity. *British Journal of Nutrition* 106 (Suppl. 3), S5–S78.
- Campbell RA, Vieira-De-Abreu A, Rowley JW, Franks ZG, Manne BK, Rondina MT, Kraiss LW, Majersik JJ, Zimmerman GA and Weyrich AS (2017) Clots are potent triggers of inflammatory cell gene expression: indications for timely fibrinolysis. *Arteriosclerosis, Thrombosis, and Vascular Biology* 37, 1819–1827.
- Canivet C, Menasria R, Rheume C, Piret J and Boivin G (2015) Valacyclovir combined with artesunate or rapamycin improves the outcome of herpes simplex virus encephalitis in mice compared to antiviral therapy alone. *Antiviral Research* 123, 105–113.
- Curran PJ and Bauer DJ (2011) The disaggregation of within-person and between-person effects in longitudinal models of change. *Annual Review of Psychology* 62, 583–619.
- Dahl J, Ormstad H, Aass HC, Malt UF, Bendz LT, Sandvik L, Brundin L and Andreassen OA (2014) The plasma levels of various cytokines are increased

- during ongoing depression and are reduced to normal levels after recovery. *Psychoneuroendocrinology* 45, 77–86.
- Dahl J, Ormstad H, Aass HC, Sandvik L, Malt UF and Andreassen OA** (2016) Recovery from major depressive disorder episode after non-pharmacological treatment is associated with normalized cytokine levels. *Acta Psychiatrica Scandinavica* 134, 40–47.
- Dalton B, Bartholdy S, Robinson L, Solmi M, Ibrahim MaA, Breen G, Schmidt U and Himmerich H** (2018) A meta-analysis of cytokine concentrations in eating disorders. *Journal of Psychiatric Research* 103, 252–264.
- Dantzer R, O'Connor JC, Freund GG, Johnson RW and Kelley KW** (2008) From inflammation to sickness and depression: when the immune system subjugates the brain. *Nature Reviews: Neuroscience* 9, 46–56.
- Derogatis L, Lipman R and Covi L** (1973) SCL-90. *Psychopharmacology Bulletin* 9, 13–28.
- Dixit VD, Yang H, Sayeed KS, Stote KS, Rumpler WV, Baer DJ, Longo DL, Mattson MP and Taub DD** (2011) Controlled meal frequency without caloric restriction alters peripheral blood mononuclear cell cytokine production. *Journal of Inflammation* 8, 1.
- Dowlati Y, Herrmann N, Swardfager W, Liu H, Sham L, Reim EK and Lancôt KL** (2010) A meta-analysis of cytokines in major depression. *Biological Psychiatry* 67, 446–457.
- Eyre HA, Air T, Proctor S, Rositano S and Baune BT** (2015) A critical review of the efficacy of non-steroidal anti-inflammatory drugs in depression. *Progress in Neuropharmacology & Biological Psychiatry* 57, 11–16.
- Furtado M and Katzman MA** (2015) Neuroinflammatory pathways in anxiety, posttraumatic stress, and obsessive compulsive disorders. *Psychiatry Research* 229, 37–48.
- Holub M, Lawrence DA, Andersen N, Davidová A, Beran O, Marešová V and Chalupa P** (2013) Cytokines and chemokines as biomarkers of community-acquired bacterial infection. *Mediators of Inflammation* 2013, 7.
- Kim YK, Amidfar M and Won E** (2019) A review on inflammatory cytokine-induced alterations of the brain as potential neural biomarkers in post-traumatic stress disorder. *Progress in Neuro-Psychopharmacology and Biological Psychiatry* 91, 103–112.
- Köhler O, Benros ME, Nordentoft M, Farkouh ME, Iyengar RL, Mors O and Krogh J** (2014) Effect of anti-inflammatory treatment on depression, depressive symptoms, and adverse effects: a systematic review and meta-analysis of randomized clinical trials. *JAMA Psychiatry* 71, 1381–1391.
- Köhler O, Krogh J, Mors O and Benros ME** (2016) Inflammation in depression and the potential for anti-inflammatory treatment. *Current Neuropharmacology* 14, 732–742.
- Kornstein SG and Schneider RK** (2001) Clinical features of treatment-resistant depression. *Journal of Clinical Psychiatry* 62 (Suppl. 16), 18–25.
- Leemasawatdigul K and Gappa-Fahlenkamp H** (2011) Effect of storage conditions on the stability of recombinant human MCP-1/CCL2. *Biologicals: Journal of the International Association of Biological Standardization* 39, 29–32.
- Little RJA** (1988) A test of missing completely at random for multivariate data with missing values. *Journal of the American Statistical Association* 83, 1198–1202.
- Maes M** (1995) Evidence for an immune response in major depression: a review and hypothesis. *Progress in Neuro-Psychopharmacology and Biological Psychiatry* 19, 11–38.
- Maes M** (2011) Depression is an inflammatory disease, but cell-mediated immune activation is the key component of depression. *Progress in Neuro-Psychopharmacology and Biological Psychiatry* 35, 664–675.
- Maes M, Bosmans E, De Jongh R, Kenis G, Vandoolaeghe E and Neels H** (1997) Increased serum IL-6 and IL-1 receptor antagonist concentrations in major depression and treatment resistant depression. *Cytokine* 9, 853–858.
- Maes M, Bosmans E, Suy E, Vandervorst C, De Jonckheere C and Raus J** (1990) Immune disturbances during major depression: upregulated expression of Interleukin-2 receptors. *Neuropsychobiology* 24, 115–120.
- Miller AH and Raison CL** (2016) The role of inflammation in depression: from evolutionary imperative to modern treatment target. *Nature Reviews: Immunology* 16, 22–34.
- Miller MW, Lin AP, Wolf EJ and Miller DR** (2018) Oxidative stress, inflammation, and neuroprogression in chronic PTSD. *Harvard Review of Psychiatry* 26, 57–69.
- Morch RH, Dieset I, Faerden A, Hope S, Aas M, Nerhus M, Gardsjord ES, Haram M, Falk RS, Joa I, Morken G, Agartz I, Aukrust P, Djurovic S, Melle I, Ueland T and Andreassen OA** (2017) Persistent increase in TNF and IL-1 markers in severe mental disorders suggests trait-related inflammation: a one year follow-up study. *Acta Psychiatrica Scandinavica* 136, 400–408.
- Müller N, Schwarz MJ, Dehning S, Douhe A, Ceroveckí A, Goldstein-Müller B, Spellmann I, Hetzel G, Maino K, Kleindienst N, Möller HJ, Arolt V and Riedel M** (2006) The cyclooxygenase-2 inhibitor celecoxib has therapeutic effects in major depression: results of a double-blind, randomized, placebo controlled, add-on pilot study to reboxetine. *Molecular Psychiatry* 11, 680.
- Passos IC, Vasconcelos-Moreno MP, Costa LG, Kunz N, Brietzke E, Quevedo J, Salum G, Magalhaes PV, Kapczinski F and Kauer-Sant'anna M** (2015) Inflammatory markers in post-traumatic stress disorder: a systematic review, meta-analysis, and meta-regression. *Lancet Psychiatry* 2, 1002–1012.
- Pedersen G and Karterud S** (2004) Is SCL-90R helpful for the clinician in assessing DSM-IV symptom disorders? *Acta Psychiatrica Scandinavica* 110, 215–224.
- Phillips C and Fahimi A** (2018) Immune and neuroprotective effects of physical activity on the brain in depression. *Frontiers in Neuroscience* 12, 498.
- Rabe-Hesketh S and Skrondal A** (2016) *Multilevel and Longitudinal Modeling Using Stata, Volume I: Continuous Responses*, 3rd edn. College Station, TX: Stata Press, p. 497.
- Raison CL, Rutherford RE, Woolwine BJ, Shuo C, Schettler P, Drake DF, Haroon E and Miller AH** (2013) A randomized controlled trial of the tumor necrosis factor antagonist infliximab for treatment-resistant depression: the role of baseline inflammatory biomarkers. *JAMA Psychiatry* 70, 31–41.
- Ryttilä-Manninen M, Frojd S, Haravuori H, Lindberg N, Marttunen M, Kettunen K and Therman S** (2016) Psychometric properties of the symptom checklist-90 in adolescent psychiatric inpatients and age- and gender-matched community youth. *Child and Adolescent Psychiatry and Mental Health* 10, 23.
- Schiepers OJ, Wichers MC and Maes M** (2005) Cytokines and major depression. *Progress in Neuro-Psychopharmacology and Biological Psychiatry* 29, 201–217.
- Sheehan DV, Lecrubier Y, Sheehan KH, Amorim P, Janavs J, Weiller E, Hergueta T, Baker R and Dunbar GC** (1998) The Mini-International Neuropsychiatric Interview (M.I.N.I.): the development and validation of a structured diagnostic psychiatric interview for DSM-IV and ICD-10. *Journal of Clinical Psychiatry* 59 (Suppl. 20), 22–33; quiz 34–57.
- Smith RS** (1991) The macrophage theory of depression. *Medical Hypotheses* 35, 298–306.
- Toft H, Bramness JG, Lien L, Abebe DS, Wampold BE, Tilden T, Hestad K and Neupane SP** (2018) PTSD patients show increasing cytokine levels during treatment despite reduced psychological distress. *Neuropsychiatric Disease and Treatment* 14, 2367–2378.
- Valkanova V, Ebmeier KP and Allan CL** (2013) CRP, IL-6 and depression: a systematic review and meta-analysis of longitudinal studies. *Journal of Affective Disorders* 150, 736–744.
- Van Den Biggelaar AH, Gussekloo J, De Craen AJ, Frolich M, Stek ML, Van Der Mast RC and Westendorp RG** (2007) Inflammation and interleukin-1 signaling network contribute to depressive symptoms but not cognitive decline in old age. *Experimental Gerontology* 42, 693–701.
- Virtanen M, Shipley MJ, Batty GD, Hamer M, Allan CL, Lowe GD, Ebmeier KP, Akbaraly TN, Alenius H, Haapakoski R, Singh-Manoux A and Kivimäki M** (2015) Interleukin-6 as a predictor of symptom resolution in psychological distress: a cohort study. *Psychological Medicine* 45, 2137–2144.
- Vogelzangs N, De Jonge P, Smit JH, Bahn S and Penninx BW** (2016) Cytokine production capacity in depression and anxiety. *Transl Psychiatry* 6, e825.
- Waheed A, Dalton B, Wesemann U, Ibrahim MaA and Himmerich H** (2018) A systematic review of interleukin-1beta in post-traumatic stress disorder: evidence from human and animal studies. *Journal of Interferon and Cytokine Research* 38, 1–11.
- Wang Z, Caughron B and Young MRI** (2017) Posttraumatic stress disorder: an immunological disorder? *Frontiers in Psychiatry* 8, 222.



- Warner-Schmidt JL, Chen EY, Marshall JJ, Greengard P and Vanover KE** (2011) Antidepressant effects of selective serotonin reuptake inhibitors (SSRIs) are attenuated by antiinflammatory drugs in mice and humans. *Proceedings of the National Academy of Sciences of the United States of America* 108, 9262–9267.
- Williams JR** (2008) The declaration of Helsinki and public health. *Bulletin of the World Health Organization* 86, 650–652.
- Young JJ, Bruno D and Pomara N** (2014) A review of the relationship between proinflammatory cytokines and major depressive disorder. *Journal of Affective Disorders* 169, 15–20.