



Medicines Discovery Catapult (MDC)

Rafael C Jimenez

Accessing biomedical data for data analysis

B4BB, SME Forum

2022-07-06



**Reshaping
Discovery** ↗
↖ **Together**

MDC



ESTABLISHED IN 2015



BASED IN ALDERLEY PARK, CHESHIRE - THE UK'S LARGEST SINGLE SITE LIFE SCIENCES CAMPUS



PART OF THE CATAPULT NETWORK – ESTABLISHED BY INNOVATE UK



INDEPENDENT, NOT-FOR-PROFIT ORGANISATION



TEAM OF > 130 SPECIALISTS WITH EXTENSIVE INDUSTRY EXPERIENCE

To reshape drug discovery for the benefit of patients



SUPPORTING THE DRUG DISCOVERY INDUSTRY

SMEs and innovators to deliver growth for the drug discovery economy



LEVERAGING UK INFRASTRUCTURE

Connecting the community



TACKLING INDUSTRY-LED CHALLENGES

That limit today's discovery process

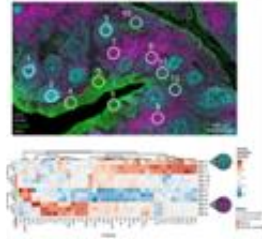


INDUSTRIALISING AND DRIVING ADOPTION

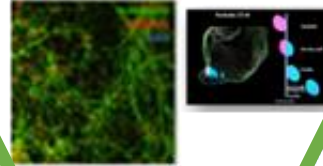
Of new scientific tools and modern techniques for discovering medicines

MDC capabilities

Biomarkers



Target and pathway engagement



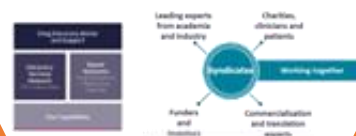
Drug Delivery Biodistribution



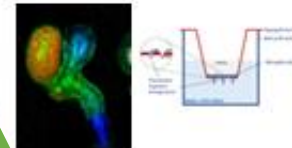
Biomedical informatics



Virtual R&D and Syndicates



Cell model analysis and validation



MDC Informatics



MDC Informatics

Analyse and interpret complex data
to help you to make decisions about
developing new medicines



Multidisciplinary
expertise



In-house
developed assets



Integration of
third party data

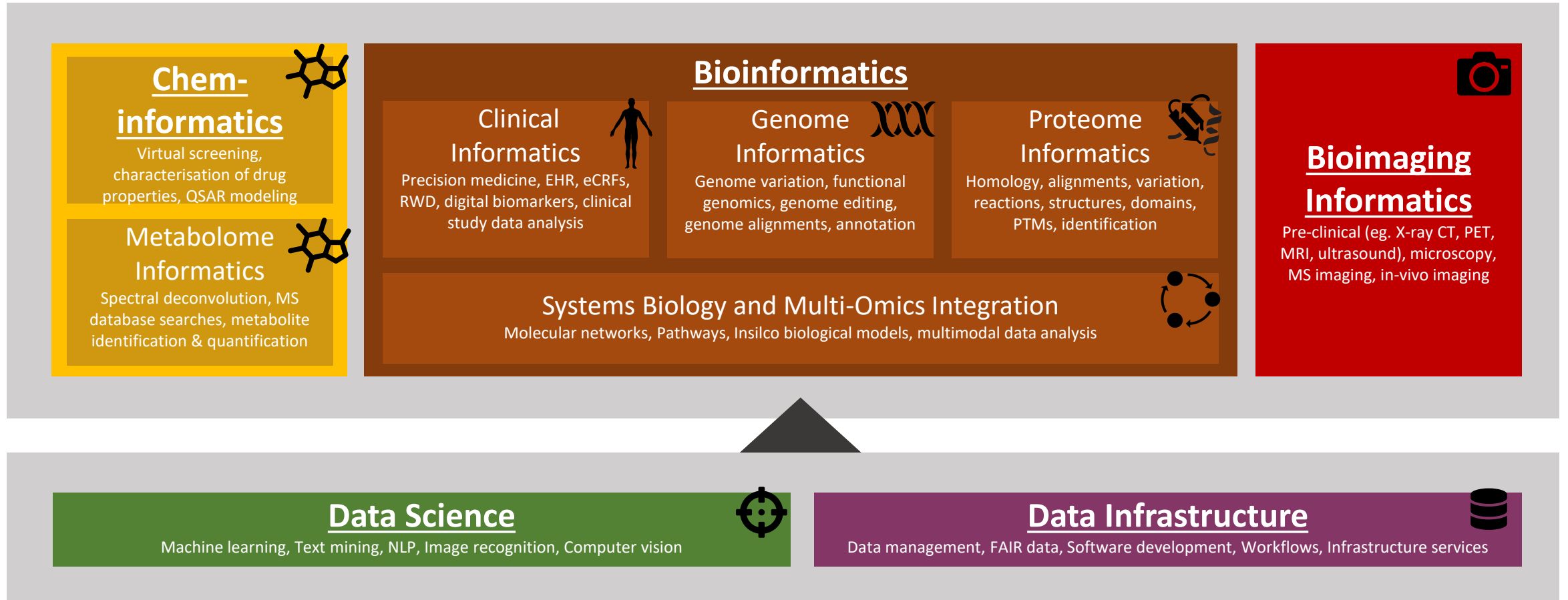


Specialised
software



Data
infrastructure

Team and expertise



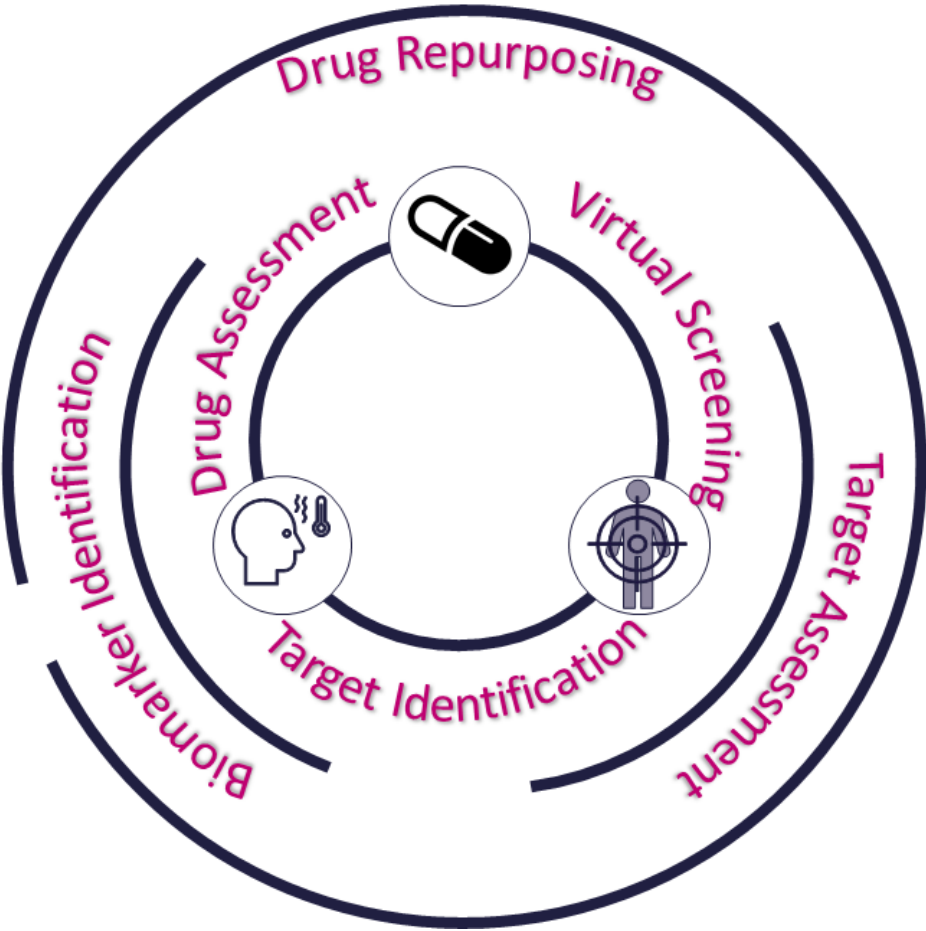
Informatics capabilities

assets

capabilities

insights

- CartaPharma**
Resource integrating ext & int data assets
- CRISPy**
DB with insights about drug discovery UK companies
- Aurac**
Plugin enriching and visualising biochem entities
- AssayNet**
Data mining resource of assays, drugs & targets
- Ares**
Virtual screening pipeline using structural methods
- DeepADMET**
Data mining resource of ADMET properties
- DREaM.ai**
DB ranking drugs based on its properties
- Apollo**
DB of antimicrobials & their gold-standard annotations
- MDC-PPDMS**
Database of druggable domains
- DSP ATLAS**
Tool to manage & analyse spatial expression data
- DARTS**
DB of real drugs and biological targets
- Asclepius**
DB of Clinical Trials & Drug-Target-Disease annotations
- VESPA**
Tool to predict the impact of mutations in proteins
- Narcissus**
Tool to handle metadata & support analysis workflows
- Polyphemus**
DB with compounds from vendors and external DBs
- Pan**
Enriched library of chemical structures using FBLD
- Dionysus**
Dataset of drugged and druggable genes
- DocLib**
Software components for text mining
- NER**
Tool for named entity recognition for biochem
- AMBER+**
Toolkit to use and integrate AMBER

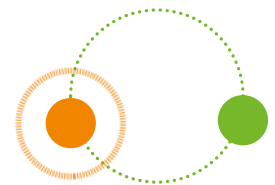


- Disease mechanisms
- Biomarkers
- Targets
- Druggability
- Drugs
- Efficacy

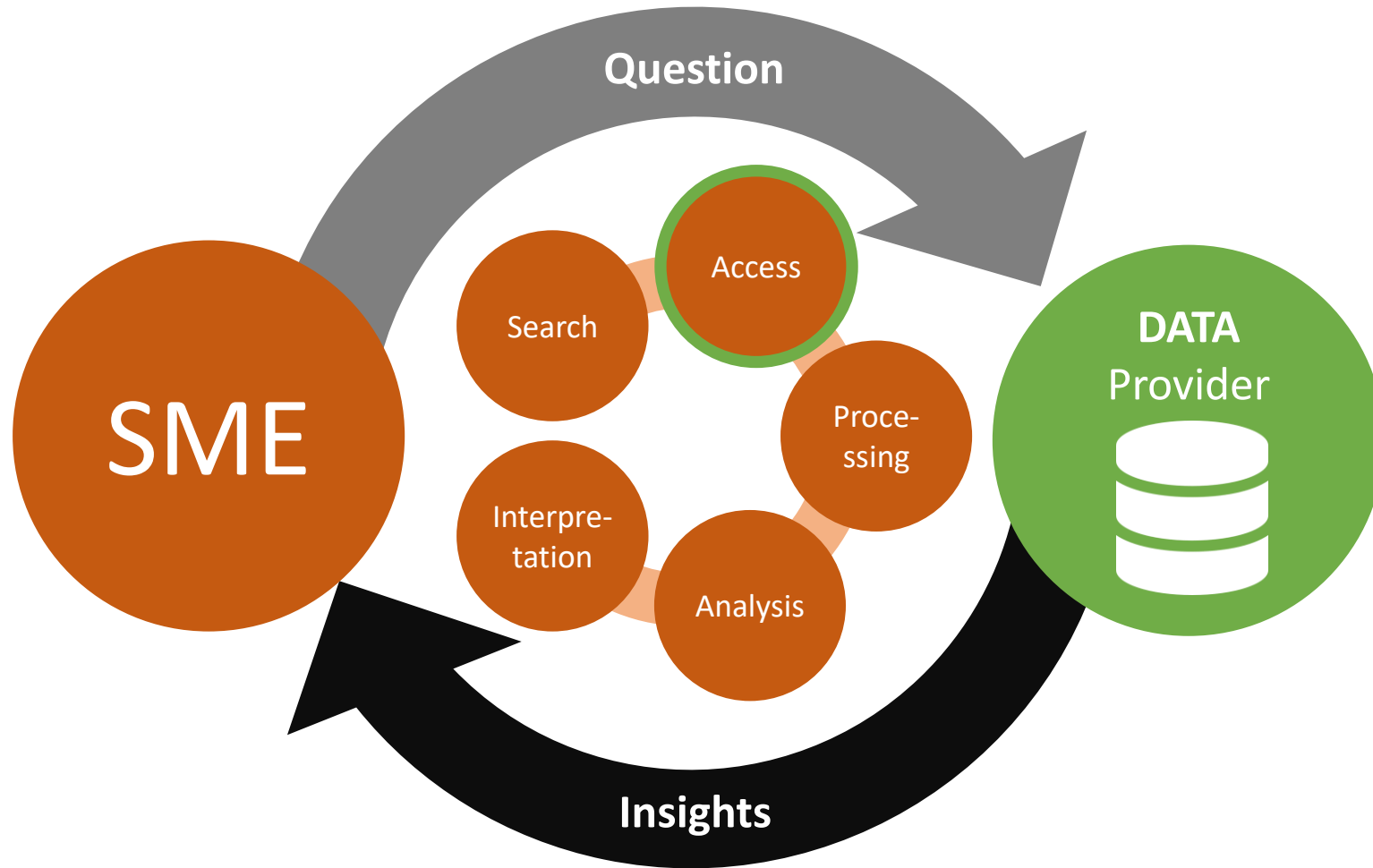
Workshop expectations

Learn more about **health data resources** and **solutions to access, integrate, and analyse** health data

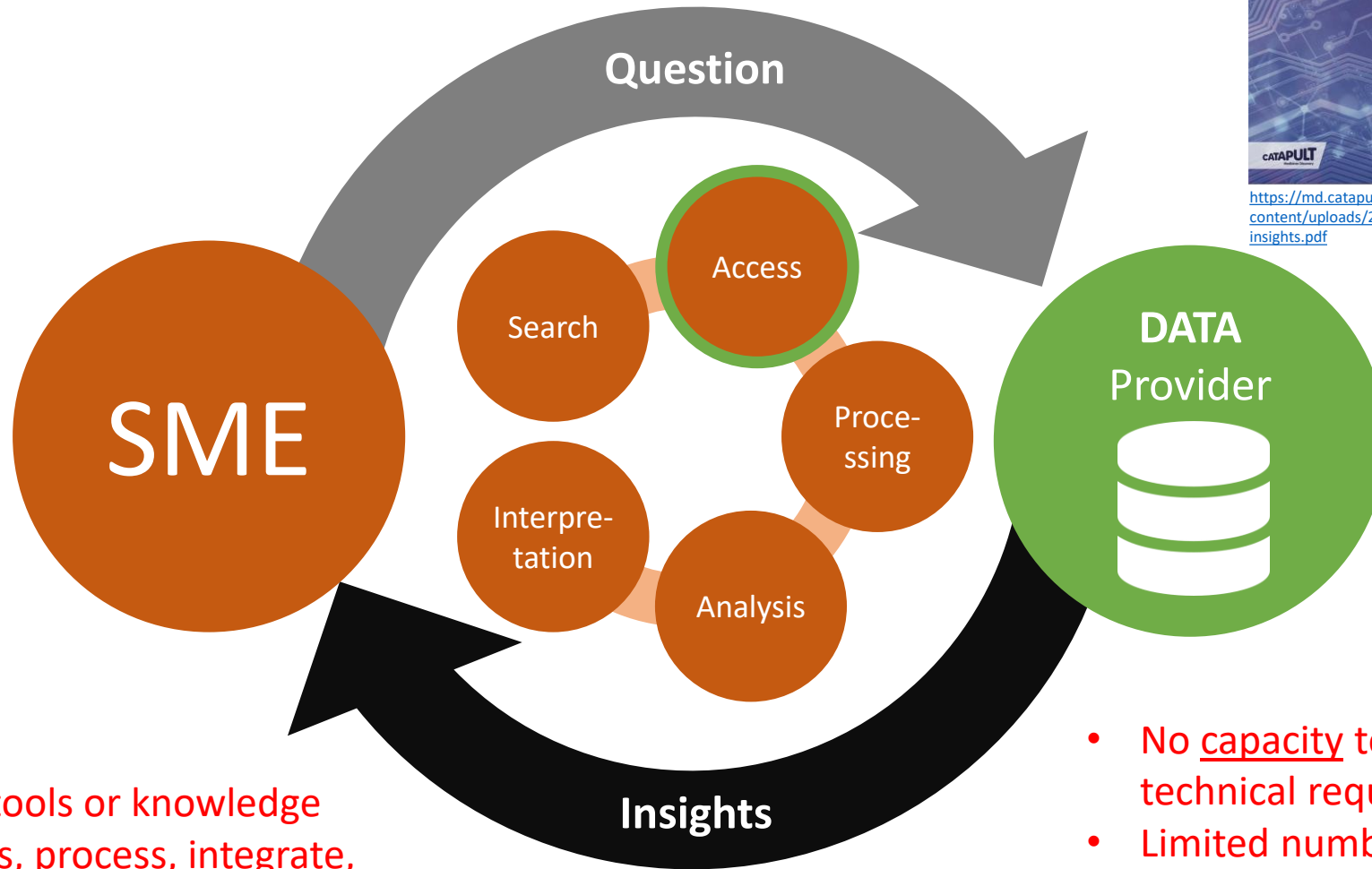
Explore the **opportunity** for public funded service providers to **work as a collective** to support SMEs



Data to insights



Data to insights



- No capacity, tools or knowledge to find, access, process, integrate, analyse and interpret 3rd party data

issues

- No capacity to help SMEs with their technical requirements
- Limited number of tools and reference data to support data analysis
- Limited data analysis support or domain knowledge to help with data analysis

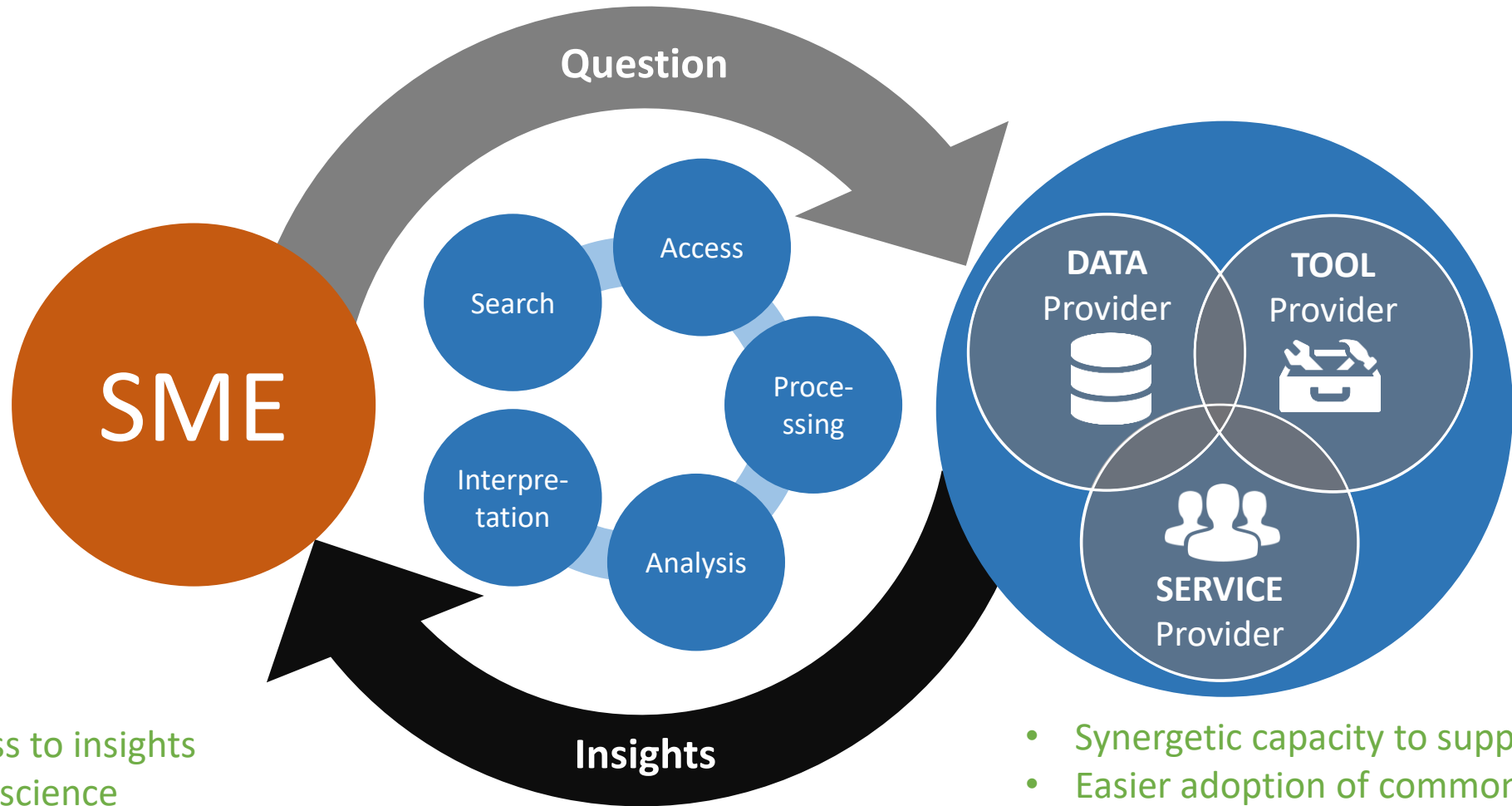


<https://md.catapult.org.uk/wp-content/uploads/2019/05/sodn19-ai-insights.pdf>



<https://md.catapult.org.uk/wp-content/uploads/2019/10/health-data-report.pdf>

Work as a collective



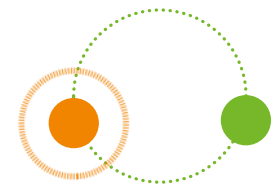
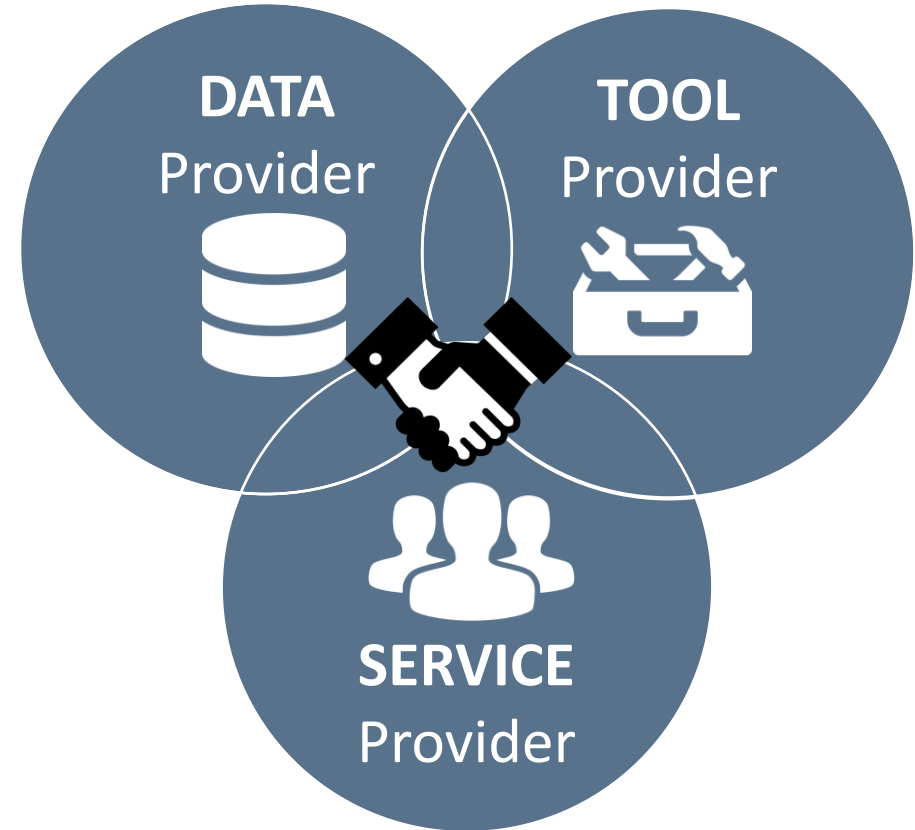
- Quicker access to insights
- Focus on the science
- No need to worry about legal or technical related issues

benefits

- Synergetic capacity to support SMEs
- Easier adoption of common solutions
- Better integration of public funded initiatives
- Not sharing data but insights

Questions

- What are the **needs** (and bottlenecks) of SMEs to **exploit** cohort data?
- What practical **solutions** could be easily implemented **across organisations** to support SMEs?
- What **agreements between organisations** could help to better support SMEs?





Reshaping
Discovery
Together

Thanks for your attention

Follow up proposal

Work as a collective to support SMEs
to get insights from health data

