



# Pieces *of* Time





# Pieces *of* Time

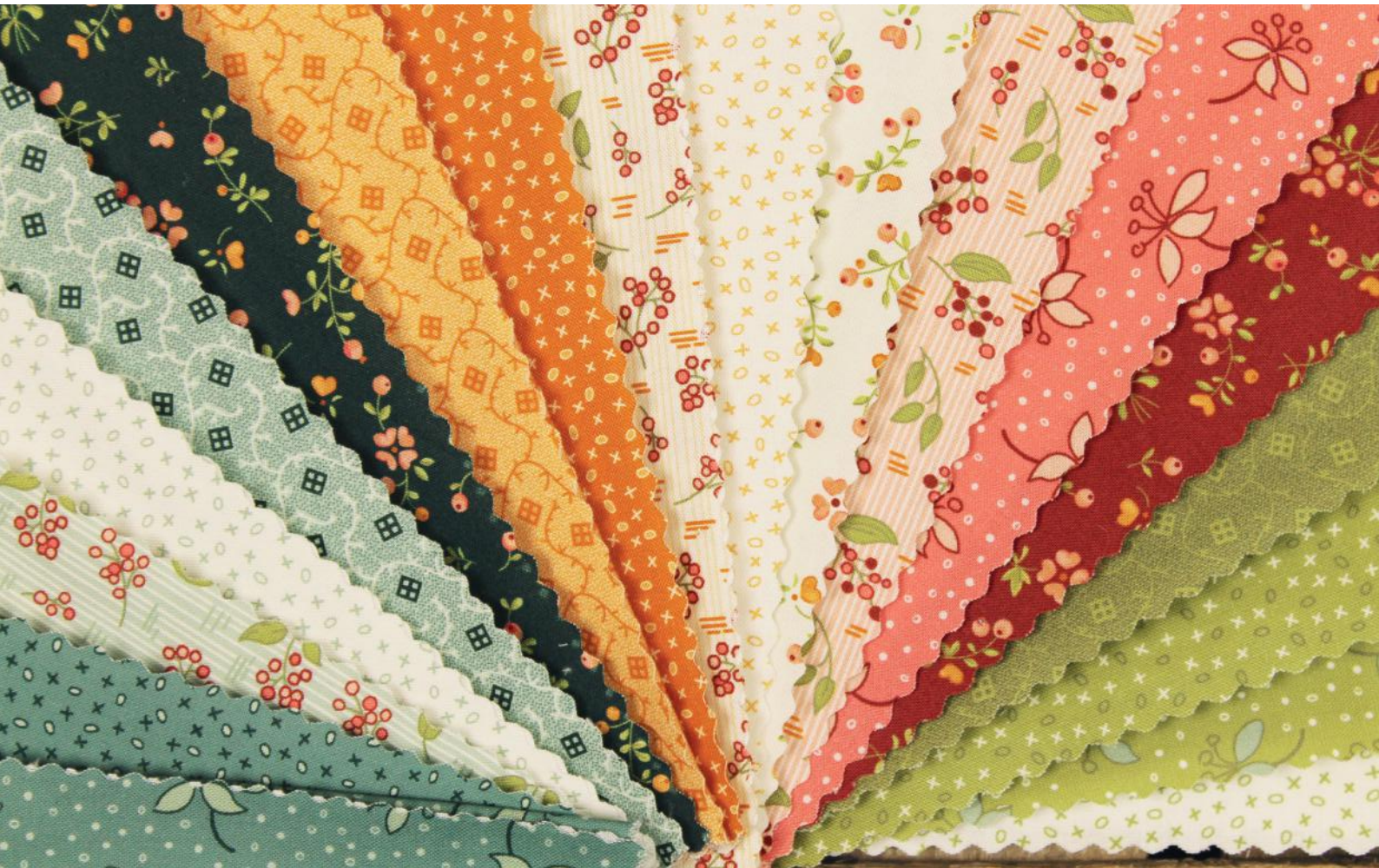
With a mixture of traditionally inspired prints and vibrant colors  
Pieces of Time will bring Summer sunshine into every sewing room!

15 colorful prints and 3 cream essentials  
are all you need to create many beautiful projects.

Whether you pick the brighter fabrics, focus on the dark, rich tones  
or mix them all up for a splash of color:  
you can't go wrong!

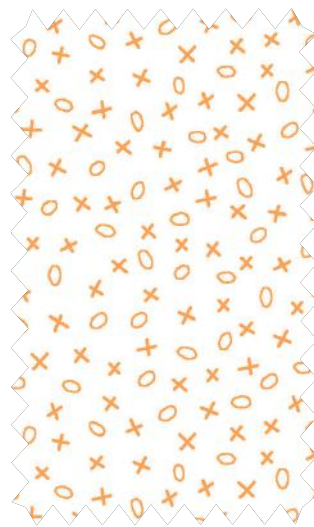
Be inspired by the selection of patterns we designed for you  
or let your own creativity run free.

Enjoy "Pieces of Time"!





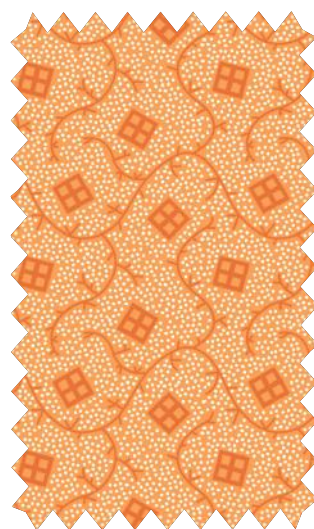
POT 220 302  
Growing Love - Cream



POT 220 206  
Tic-Tac-Toe - Cream-Tangerine



POT 220 101  
Merry Berry - Cream



POT 220 402  
Bellevue - Tangerine



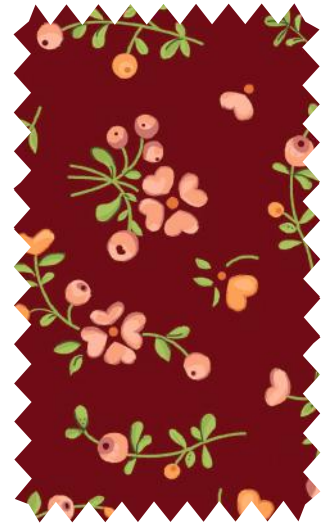
POT 220 202  
Tic-Tac-Toe - Carrot



POT 220 102  
Merry Berry – Frosted Pink



POT 220 501  
Glorytree - Blush



POT 220 301  
Growing Love – Cranberry Red



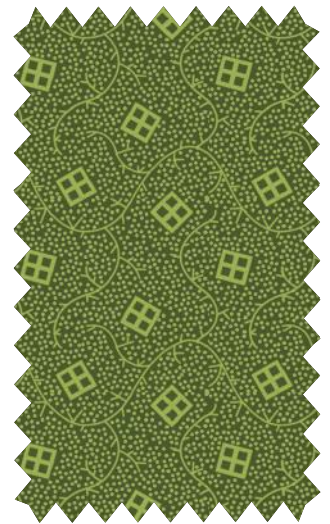
POT 220 204  
Tic-Tac-Toe – Cream-Apple Green



POT 220 502  
Glorytree – Apple Green



POT 220 201  
Tic-Tac-Toe – Apple Green

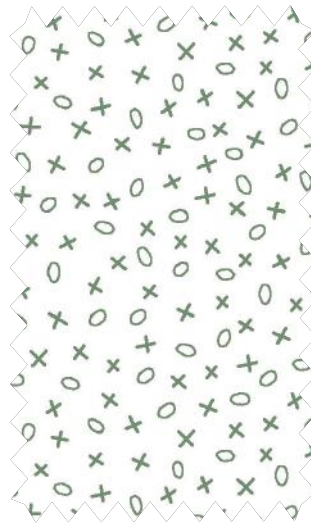


POT 220 401  
Bellevue – Juniper Green





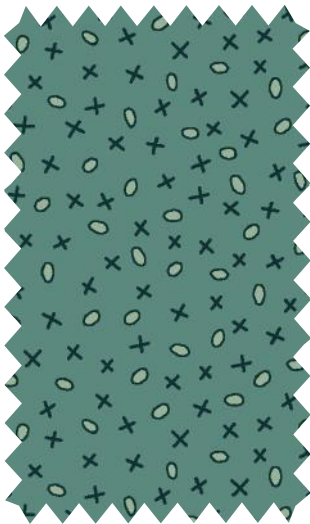
POT 220 103  
Merry Berry – Glacier Blue



POT 220 205  
Tic-Tac-Toe - Moss



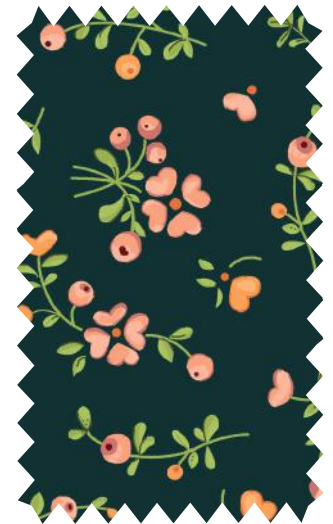
POT 220 403  
Bellevue – Glacier Blue



POT 220 203  
Tic-Tac-Toe – Duck Egg

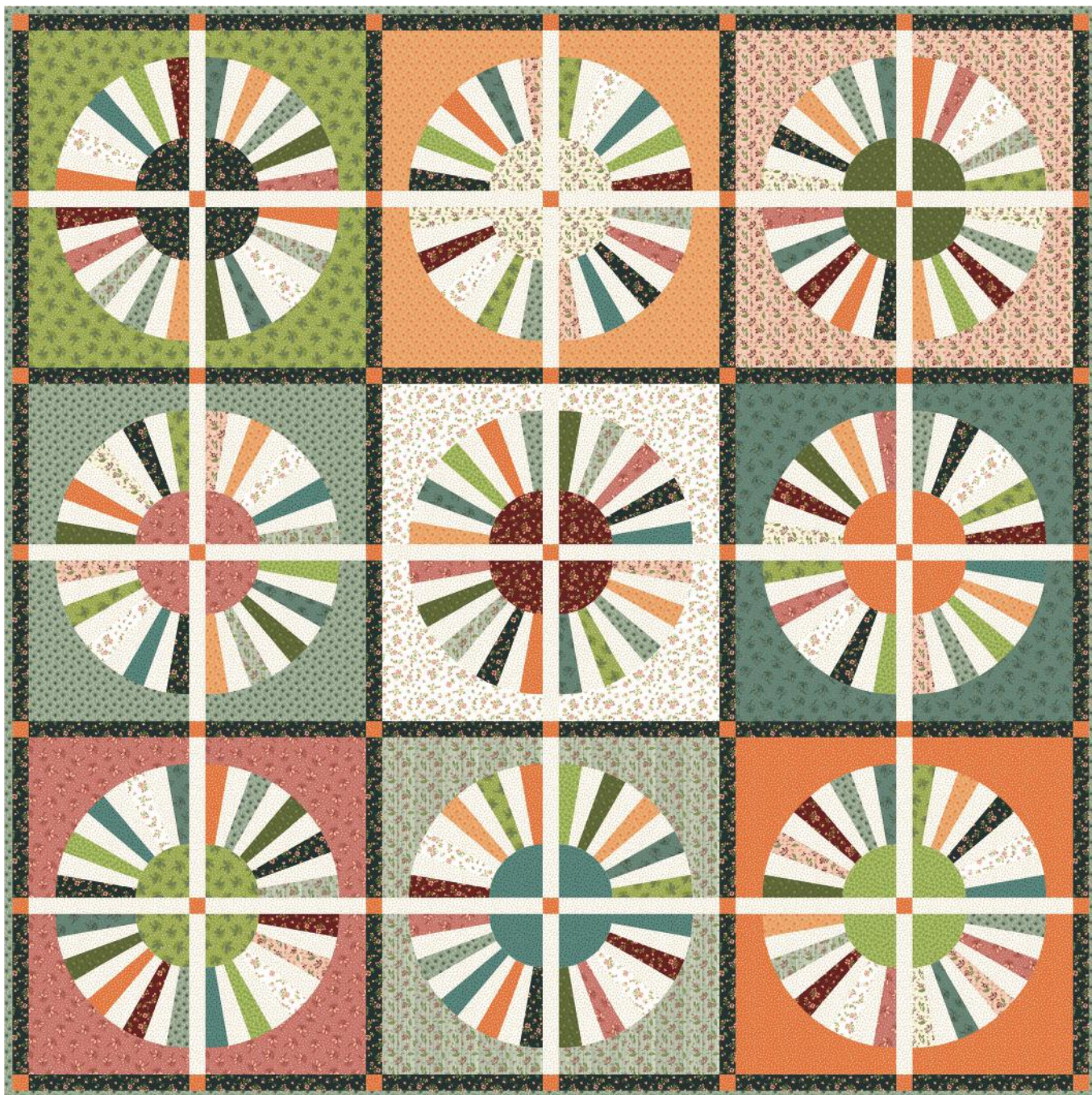


POT 220 503  
Glorytree – Duck Egg



POT 220 303  
Growing Love - Teal





Wagon Wheel  
68" x 68" (170 x 170 cm)

SKU	1 Quilt	Bolts / 10 kits*
POT 220 101	8" x WOF (20 x 110 cm)	1/2
POT 220 102	14" x WOF (35 x 110 cm)	1/2
POT 220 103	14" x WOF (35 x 110 cm)	1/2
POT 220 201	8" x WOF (20 x 110 cm)	1/2
POT 220 202	24" x WOF (65 x 110 cm)	1
POT 220 203	8" x WOF (20 x 110 cm)	1/2
POT 220 204	/	/
POT 220 205	/	/
POT 220 206	64" x WOF (165 x 110 cm)	2

SKU	1 Quilt	Bolts / 10 kits*
POT 220 301	8" x WOF (20 x 110 cm)	1/2
POT 220 302	14" x WOF (35 x 110 cm)	1/2
POT 220 303	32" x WOF (85 x 110 cm)	1
POT 220 401	8" x WOF (20 x 110 cm)	1/2
POT 220 402	14" x WOF (35 x 110 cm)	1/2
POT 220 403	35" x WOF (90 x 110 cm)	1
POT 220 501	20" x WOF (55 x 110 cm)	1
POT 220 502	20" x WOF (55 x 110 cm)	1
POT 220 503	14" x WOF (35 x 110 cm)	1/2

\* Top + binding (backing not included)



Scrappy Baskets  
21" x 25" (53 x 63 cm)

SKU	1 Quilt	Bolts / 10 kits*
POT 220 101	10" x 10" (25 x 25 cm)	1/2
POT 220 102	10" x 20" (25 x 55 cm)	1/2
POT 220 103	10" x 20" (25 x 55 cm)	1/2
POT 220 201	10" x 10" (25 x 25 cm)	1/2
POT 220 202	10" x 20" (25 x 55 cm)	1/2
POT 220 203	10" x WOF (25 x 110 cm)	1/2
POT 220 204	10" x WOF (25 x 110 cm)	1/2
POT 220 205	10" x WOF (25 x 110 cm)	1/2
POT 220 206	10" x WOF (25 x 110 cm)	1/2
POT 220 301	10" x 20" (25 x 55 cm)	1/2
POT 220 302	10" x 20" (25 x 55 cm)	1/2
POT 220 303	10" x 10" (25 x 25 cm)	1/2
POT 220 401	10" x 10" (25 x 25 cm)	1/2
POT 220 402	10" x 20" (25 x 55 cm)	1/2
POT 220 403	10" x 10" (25 x 25 cm)	1/2
POT 220 501	10" x 20" (25 x 55 cm)	1/2
POT 220 502	10" x 20" (25 x 55 cm)	1/2
POT 220 503	10" x 10" (25 x 25 cm)	1/2

\* Top + binding (backing not included)





In Full Bloom  
30" x 36" (75 x 90 cm)

SKU	1 Quilt	Bolts / 10 kits*
POT 220 101	5" x 10" (15 x 25 cm)	1/2
POT 220 102	10" x 20" (25 x 55 cm)	1/2
POT 220 103	10" x 10" (25 x 25 cm)	1/2
POT 220 201	10" x 20" (25 x 55 cm)	1/2
POT 220 202	17" x WOF (45 x 110 cm)	1
POT 220 203	10" x 10" (25 x 25 cm)	1/2
POT 220 204	/	/
POT 220 205	22" x WOF (55 x 110 cm)	1
POT 220 206	/	/

SKU	1 Quilt	Bolts / 10 kits*
POT 220 301	10" x 20" (25 x 55 cm)	1/2
POT 220 302	8" x WOF (20 x 110 cm)	1/2
POT 220 303	10" x 10" (25 x 25 cm)	1/2
POT 220 401	10" x 20" (25 x 55 cm)	1/2
POT 220 402	10" x 20" (25 x 55 cm)	1/2
POT 220 403	20" x WOF (50 x 110 cm)	1
POT 220 501	10" x 20" (25 x 55 cm)	1/2
POT 220 502	10" x 20" (25 x 55 cm)	1/2
POT 220 503	10" x 10" (25 x 25 cm)	1/2

\* Top + binding (backing not included)



Nostalgia  
64" x 64" (160 x 160 cm)

SKU	1 Quilt	Bolts / 10 kits*
POT 220 101	5" x WOF (13 x 110 cm)	1/2
POT 220 102	5" x WOF (13 x 110 cm)	1/2
POT 220 103	5" x WOF (13 x 110 cm)	1/2
POT 220 201	5" x WOF (13 x 110 cm)	1/2
POT 220 202	5" x WOF (13 x 110 cm)	1/2
POT 220 203	5" x WOF (13 x 110 cm)	1/2
POT 220 204	25" x WOF (60 x 110 cm)	1
POT 220 205	25" x WOF (60 x 110 cm)	1
POT 220 206	30" x WOF (80 x 110 cm)	1

SKU	1 Quilt	Bolts / 10 kits*
POT 220 301	5" x WOF (13 x 110 cm)	1/2
POT 220 302	5" x WOF (13 x 110 cm)	1/2
POT 220 303	25" x WOF (60 x 110 cm)	1
POT 220 401	5" x WOF (13 x 110 cm)	1/2
POT 220 402	5" x WOF (13 x 110 cm)	1/2
POT 220 403	5" x WOF (13 x 110 cm)	1/2
POT 220 501	5" x WOF (13 x 110 cm)	1/2
POT 220 502	5" x WOF (13 x 110 cm)	1/2
POT 220 503	66" x WOF (165 x 110 cm)	2

\* Top + binding (backing not included)


SKU	1 Quilt	Bolts / 10 kits*
POT 220 101	10" x 10" (25 x 25 cm)	1/2
POT 220 102	10" x 10" (25 x 25 cm)	1/2
POT 220 103	10" x 10" (25 x 25 cm)	1/2
POT 220 201	10" x 10" (25 x 25 cm)	1/2
POT 220 202	10" x 10" (25 x 25 cm)	1/2
POT 220 203	10" x 10" (25 x 25 cm)	1/2
POT 220 204	10" x 10" (25 x 25 cm)	1/2
POT 220 205	10" x 10" (25 x 25 cm)	1/2
POT 220 206	10" x 10" (25 x 25 cm)	1/2
POT 220 301	10" x 10" (25 x 25 cm)	1/2
POT 220 302	10" x 10" (25 x 25 cm)	1/2
POT 220 303	10" x 10" (25 x 25 cm)	1/2
POT 220 401	10" x 10" (25 x 25 cm) + 5" x WOF (15 x 110 cm)	1/2
POT 220 402	10" x 10" (25 x 25 cm)	1/2
POT 220 403	10" x 10" (25 x 25 cm)	1/2
POT 220 501	10" x 10" (25 x 25 cm)	1/2
POT 220 502	10" x 10" (25 x 25 cm)	1/2
POT 220 503	10" x 10" (25 x 25 cm)	1/2

\* Top + binding (backing not included)



Lollipop Flower  
16"x 18" (40 x 45 cm)





EQP Textiles is a family company based in Belgium,  
founded in 2006 by Ellen Remijnse.

We combine our interest in antique quilts with a fresh and modern country touch to create our own style. EQP aims to create beautiful collections of fabrics and patterns with a European influence for patchwork, quilting, crafts and sewing.

Welcome to the world of EQP!

**EQP Textiles**

**[www.elliesquiltplace.com](http://www.elliesquiltplace.com)**

Statement on colors: actual product colors may vary from colors shown in the brochure.